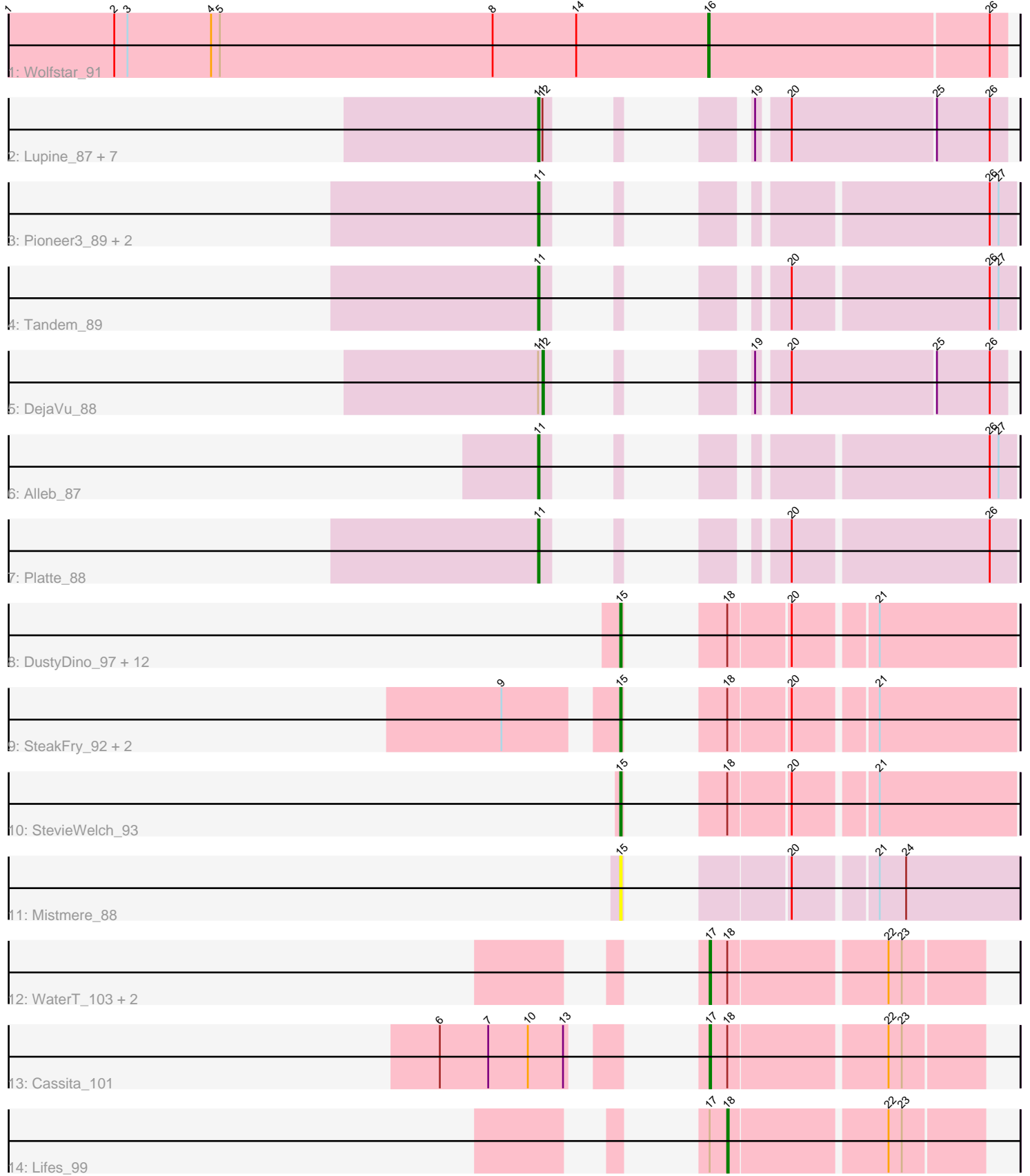


# Pham 298607



Note: Tracks are now grouped by subcluster and scaled. Switching in subcluster is indicated by changes in track color. Track scale is now set by default to display the region 30 bp upstream of start 1 to 30 bp downstream of the last possible start. If this default region is judged to be packed too tightly with annotated starts, the track will be further scaled to only show that region of the ORF with annotated starts. This action will be indicated by adding "Zoomed" to the title. For starts, yellow indicates the location of called starts comprised solely of Glimmer/GeneMark auto-annotations, green indicates the location of called starts with at least 1 manual gene annotation.

## Pham 298607 Report

This analysis was run 06/08/26 on database version 649.

Pham number 298607 has 39 members, 8 are drafts.

Phages represented in each track:

- Track 1 : Wolfstar\_91
- Track 2 : Lupine\_87, Pavlo\_87, Uterion\_91, Roman\_89, PhillyPhilly\_85, Solimine\_89, Saradis\_89, Hubbs\_86
- Track 3 : Pioneer3\_89, OlinDD\_89, Hortus1\_89
- Track 4 : Tandem\_89
- Track 5 : DejaVu\_88
- Track 6 : Alleb\_87
- Track 7 : Platte\_88
- Track 8 : DustyDino\_97, Lyell\_93, Issa7\_92, RunningBrook\_95, Shroomer\_96, Yuma\_92, Casablanca\_94, ASegato\_91, Fork\_89, Necrophoxinus\_95, Musetta\_92, Erenyeager\_93, Deschain\_94
- Track 9 : SteakFry\_92, HollowPurple\_94, Welcome\_95
- Track 10 : StevieWelch\_93
- Track 11 : Mistmere\_88
- Track 12 : WaterT\_103, BarnCat\_98, LeeroyJenkins\_107
- Track 13 : Cassita\_101
- Track 14 : Lifes\_99

### ***Summary of Final Annotations (See graph section above for start numbers):***

The start number called the most often in the published annotations is 15, it was called in 13 of the 31 non-draft genes in the pham.

Genes that call this "Most Annotated" start:

- ASegato\_91, Casablanca\_94, Deschain\_94, DustyDino\_97, Erenyeager\_93, Fork\_89, HollowPurple\_94, Issa7\_92, Lyell\_93, Mistmere\_88, Musetta\_92, Necrophoxinus\_95, RunningBrook\_95, Shroomer\_96, SteakFry\_92, StevieWelch\_93, Welcome\_95, Yuma\_92,

Genes that have the "Most Annotated" start but do not call it:

- 

Genes that do not have the "Most Annotated" start:

- Alleb\_87, BarnCat\_98, Cassita\_101, DejaVu\_88, Hortus1\_89, Hubbs\_86, LeeroyJenkins\_107, Lifes\_99, Lupine\_87, OlinDD\_89, Pavlo\_87, PhillyPhilly\_85, Pioneer3\_89, Platte\_88, Roman\_89, Saradis\_89, Solimine\_89, Tandem\_89, Uterion\_91, WaterT\_103, Wolfstar\_91,

### Summary by start number:

#### Start 11:

- Found in 15 of 39 ( 38.5% ) of genes in pham
- Manual Annotations of this start: 11 of 31
- Called 93.3% of time when present
- Phage (with cluster) where this start called: Alleb\_87 (ED1), Hortus1\_89 (ED1), Hubbs\_86 (ED1), Lupine\_87 (ED1), OlinDD\_89 (ED1), Pavlo\_87 (ED1), PhillyPhilly\_85 (ED1), Pioneer3\_89 (ED1), Platte\_88 (ED1), Roman\_89 (ED1), Saradis\_89 (ED1), Solimine\_89 (ED1), Tandem\_89 (ED1), Uterion\_91 (ED1),

#### Start 12:

- Found in 9 of 39 ( 23.1% ) of genes in pham
- Manual Annotations of this start: 1 of 31
- Called 11.1% of time when present
- Phage (with cluster) where this start called: DejaVu\_88 (ED1),

#### Start 15:

- Found in 18 of 39 ( 46.2% ) of genes in pham
- Manual Annotations of this start: 13 of 31
- Called 100.0% of time when present
- Phage (with cluster) where this start called: ASegato\_91 (ED2), Casablanacas\_94 (ED2), Deschain\_94 (ED2), DustyDino\_97 (ED2), Erenyeager\_93 (ED2), Fork\_89 (ED2), HollowPurple\_94 (ED2), Issa7\_92 (ED2), Lyell\_93 (ED2), Mistmere\_88 (ED3), Musetta\_92 (ED2), Necrophoxinus\_95 (ED2), RunningBrook\_95 (ED2), Shroomer\_96 (ED2), SteakFry\_92 (ED2), StevieWelch\_93 (ED2), Welcome\_95 (ED2), Yuma\_92 (ED2),

#### Start 16:

- Found in 1 of 39 ( 2.6% ) of genes in pham
- Manual Annotations of this start: 1 of 31
- Called 100.0% of time when present
- Phage (with cluster) where this start called: Wolfstar\_91 (ED),

#### Start 17:

- Found in 5 of 39 ( 12.8% ) of genes in pham
- Manual Annotations of this start: 4 of 31
- Called 80.0% of time when present
- Phage (with cluster) where this start called: BarnCat\_98 (GB), Cassita\_101 (GB), LeeroyJenkins\_107 (GB), WaterT\_103 (GB),

#### Start 18:

- Found in 22 of 39 ( 56.4% ) of genes in pham
- Manual Annotations of this start: 1 of 31
- Called 4.5% of time when present
- Phage (with cluster) where this start called: Lifes\_99 (GB),

### Summary by clusters:

There are 5 clusters represented in this pham: ED2, ED3, ED1, GB, ED,

Info for manual annotations of cluster ED:

- Start number 16 was manually annotated 1 time for cluster ED.

Info for manual annotations of cluster ED1:

- Start number 11 was manually annotated 11 times for cluster ED1.
- Start number 12 was manually annotated 1 time for cluster ED1.

Info for manual annotations of cluster ED2:

- Start number 15 was manually annotated 13 times for cluster ED2.

Info for manual annotations of cluster GB:

- Start number 17 was manually annotated 4 times for cluster GB.
- Start number 18 was manually annotated 1 time for cluster GB.

### **Gene Information:**

Gene: ASegato\_91 Start: 51629, Stop: 51426, Start Num: 15

Candidate Starts for ASegato\_91:

(Start: 15 @51629 has 13 MA's), (Start: 18 @51608 has 1 MA's), (20, 51569), (21, 51518),

Gene: Alleb\_87 Start: 51547, Stop: 51341, Start Num: 11

Candidate Starts for Alleb\_87:

(Start: 11 @51547 has 11 MA's), (26, 51358), (27, 51352),

Gene: BarnCat\_98 Start: 52842, Stop: 52666, Start Num: 17

Candidate Starts for BarnCat\_98:

(Start: 17 @52842 has 4 MA's), (Start: 18 @52830 has 1 MA's), (22, 52728), (23, 52719),

Gene: Casablancas\_94 Start: 51545, Stop: 51342, Start Num: 15

Candidate Starts for Casablancas\_94:

(Start: 15 @51545 has 13 MA's), (Start: 18 @51524 has 1 MA's), (20, 51485), (21, 51434),

Gene: Cassita\_101 Start: 53639, Stop: 53463, Start Num: 17

Candidate Starts for Cassita\_101:

(6, 53753), (7, 53720), (10, 53693), (13, 53669), (Start: 17 @53639 has 4 MA's), (Start: 18 @53627 has 1 MA's), (22, 53525), (23, 53516),

Gene: DejaVu\_88 Start: 51141, Stop: 50941, Start Num: 12

Candidate Starts for DejaVu\_88:

(Start: 11 @51144 has 11 MA's), (Start: 12 @51141 has 1 MA's), (19, 51102), (20, 51084), (25, 50988), (26, 50952),

Gene: Deschain\_94 Start: 52209, Stop: 52006, Start Num: 15

Candidate Starts for Deschain\_94:

(Start: 15 @52209 has 13 MA's), (Start: 18 @52188 has 1 MA's), (20, 52149), (21, 52098),

Gene: DustyDino\_97 Start: 52768, Stop: 52565, Start Num: 15

Candidate Starts for DustyDino\_97:

(Start: 15 @52768 has 13 MA's), (Start: 18 @52747 has 1 MA's), (20, 52708), (21, 52657),

Gene: Erenyeager\_93 Start: 51557, Stop: 51354, Start Num: 15

Candidate Starts for Erenyeager\_93:

(Start: 15 @51557 has 13 MA's), (Start: 18 @51536 has 1 MA's), (20, 51497), (21, 51446),

Gene: Fork\_89 Start: 51507, Stop: 51304, Start Num: 15

Candidate Starts for Fork\_89:

(Start: 15 @51507 has 13 MA's), (Start: 18 @51486 has 1 MA's), (20, 51447), (21, 51396),

Gene: HollowPurple\_94 Start: 52066, Stop: 51863, Start Num: 15

Candidate Starts for HollowPurple\_94:

(9, 52129), (Start: 15 @52066 has 13 MA's), (Start: 18 @52045 has 1 MA's), (20, 52006), (21, 51955),

Gene: Hortus1\_89 Start: 52122, Stop: 51916, Start Num: 11

Candidate Starts for Hortus1\_89:

(Start: 11 @52122 has 11 MA's), (26, 51933), (27, 51927),

Gene: Hubbs\_86 Start: 51193, Stop: 50990, Start Num: 11

Candidate Starts for Hubbs\_86:

(Start: 11 @51193 has 11 MA's), (Start: 12 @51190 has 1 MA's), (19, 51151), (20, 51133), (25, 51037), (26, 51001),

Gene: Issa7\_92 Start: 51522, Stop: 51319, Start Num: 15

Candidate Starts for Issa7\_92:

(Start: 15 @51522 has 13 MA's), (Start: 18 @51501 has 1 MA's), (20, 51462), (21, 51411),

Gene: LeeroyJenkins\_107 Start: 54718, Stop: 54542, Start Num: 17

Candidate Starts for LeeroyJenkins\_107:

(Start: 17 @54718 has 4 MA's), (Start: 18 @54706 has 1 MA's), (22, 54604), (23, 54595),

Gene: Lifes\_99 Start: 51700, Stop: 51536, Start Num: 18

Candidate Starts for Lifes\_99:

(Start: 17 @51712 has 4 MA's), (Start: 18 @51700 has 1 MA's), (22, 51598), (23, 51589),

Gene: Lupine\_87 Start: 51257, Stop: 51054, Start Num: 11

Candidate Starts for Lupine\_87:

(Start: 11 @51257 has 11 MA's), (Start: 12 @51254 has 1 MA's), (19, 51215), (20, 51197), (25, 51101), (26, 51065),

Gene: Lyell\_93 Start: 51718, Stop: 51521, Start Num: 15

Candidate Starts for Lyell\_93:

(Start: 15 @51718 has 13 MA's), (Start: 18 @51697 has 1 MA's), (20, 51658), (21, 51607),

Gene: Mistmere\_88 Start: 50347, Stop: 50141, Start Num: 15

Candidate Starts for Mistmere\_88:

(Start: 15 @50347 has 13 MA's), (20, 50287), (21, 50236), (24, 50218),

Gene: Musetta\_92 Start: 52057, Stop: 51854, Start Num: 15

Candidate Starts for Musetta\_92:

(Start: 15 @52057 has 13 MA's), (Start: 18 @52036 has 1 MA's), (20, 51997), (21, 51946),

Gene: Necrophoxinus\_95 Start: 52404, Stop: 52201, Start Num: 15  
Candidate Starts for Necrophoxinus\_95:  
(Start: 15 @52404 has 13 MA's), (Start: 18 @52383 has 1 MA's), (20, 52344), (21, 52293),

Gene: OlinDD\_89 Start: 52127, Stop: 51921, Start Num: 11  
Candidate Starts for OlinDD\_89:  
(Start: 11 @52127 has 11 MA's), (26, 51938), (27, 51932),

Gene: Pavlo\_87 Start: 51216, Stop: 51013, Start Num: 11  
Candidate Starts for Pavlo\_87:  
(Start: 11 @51216 has 11 MA's), (Start: 12 @51213 has 1 MA's), (19, 51174), (20, 51156), (25, 51060),  
(26, 51024),

Gene: PhillyPhilly\_85 Start: 50753, Stop: 50550, Start Num: 11  
Candidate Starts for PhillyPhilly\_85:  
(Start: 11 @50753 has 11 MA's), (Start: 12 @50750 has 1 MA's), (19, 50711), (20, 50693), (25, 50597),  
(26, 50561),

Gene: Pioneer3\_89 Start: 51925, Stop: 51719, Start Num: 11  
Candidate Starts for Pioneer3\_89:  
(Start: 11 @51925 has 11 MA's), (26, 51736), (27, 51730),

Gene: Platte\_88 Start: 51693, Stop: 51487, Start Num: 11  
Candidate Starts for Platte\_88:  
(Start: 11 @51693 has 11 MA's), (20, 51633), (26, 51504),

Gene: Roman\_89 Start: 51858, Stop: 51655, Start Num: 11  
Candidate Starts for Roman\_89:  
(Start: 11 @51858 has 11 MA's), (Start: 12 @51855 has 1 MA's), (19, 51816), (20, 51798), (25, 51702),  
(26, 51666),

Gene: RunningBrook\_95 Start: 52768, Stop: 52565, Start Num: 15  
Candidate Starts for RunningBrook\_95:  
(Start: 15 @52768 has 13 MA's), (Start: 18 @52747 has 1 MA's), (20, 52708), (21, 52657),

Gene: Saradis\_89 Start: 50819, Stop: 50616, Start Num: 11  
Candidate Starts for Saradis\_89:  
(Start: 11 @50819 has 11 MA's), (Start: 12 @50816 has 1 MA's), (19, 50777), (20, 50759), (25, 50663),  
(26, 50627),

Gene: Shroomer\_96 Start: 52008, Stop: 51805, Start Num: 15  
Candidate Starts for Shroomer\_96:  
(Start: 15 @52008 has 13 MA's), (Start: 18 @51987 has 1 MA's), (20, 51948), (21, 51897),

Gene: Solimine\_89 Start: 51715, Stop: 51512, Start Num: 11  
Candidate Starts for Solimine\_89:  
(Start: 11 @51715 has 11 MA's), (Start: 12 @51712 has 1 MA's), (19, 51673), (20, 51655), (25, 51559),  
(26, 51523),

Gene: SteakFry\_92 Start: 52066, Stop: 51863, Start Num: 15  
Candidate Starts for SteakFry\_92:  
(9, 52129), (Start: 15 @52066 has 13 MA's), (Start: 18 @52045 has 1 MA's), (20, 52006), (21, 51955),

Gene: StevieWelch\_93 Start: 51678, Stop: 51475, Start Num: 15  
Candidate Starts for StevieWelch\_93:  
(Start: 15 @51678 has 13 MA's), (Start: 18 @51657 has 1 MA's), (20, 51618), (21, 51567),

Gene: Tandem\_89 Start: 52005, Stop: 51799, Start Num: 11  
Candidate Starts for Tandem\_89:  
(Start: 11 @52005 has 11 MA's), (20, 51945), (26, 51816), (27, 51810),

Gene: Uterion\_91 Start: 51150, Stop: 50947, Start Num: 11  
Candidate Starts for Uterion\_91:  
(Start: 11 @51150 has 11 MA's), (Start: 12 @51147 has 1 MA's), (19, 51108), (20, 51090), (25, 50994),  
(26, 50958),

Gene: WaterT\_103 Start: 53845, Stop: 53669, Start Num: 17  
Candidate Starts for WaterT\_103:  
(Start: 17 @53845 has 4 MA's), (Start: 18 @53833 has 1 MA's), (22, 53731), (23, 53722),

Gene: Welcome\_95 Start: 52220, Stop: 52017, Start Num: 15  
Candidate Starts for Welcome\_95:  
(9, 52283), (Start: 15 @52220 has 13 MA's), (Start: 18 @52199 has 1 MA's), (20, 52160), (21, 52109),

Gene: Wolfstar\_91 Start: 52955, Stop: 52755, Start Num: 16  
Candidate Starts for Wolfstar\_91:  
(1, 53432), (2, 53360), (3, 53351), (4, 53294), (5, 53288), (8, 53102), (14, 53045), (Start: 16 @52955  
has 1 MA's), (26, 52766),

Gene: Yuma\_92 Start: 51729, Stop: 51526, Start Num: 15  
Candidate Starts for Yuma\_92:  
(Start: 15 @51729 has 13 MA's), (Start: 18 @51708 has 1 MA's), (20, 51669), (21, 51618),