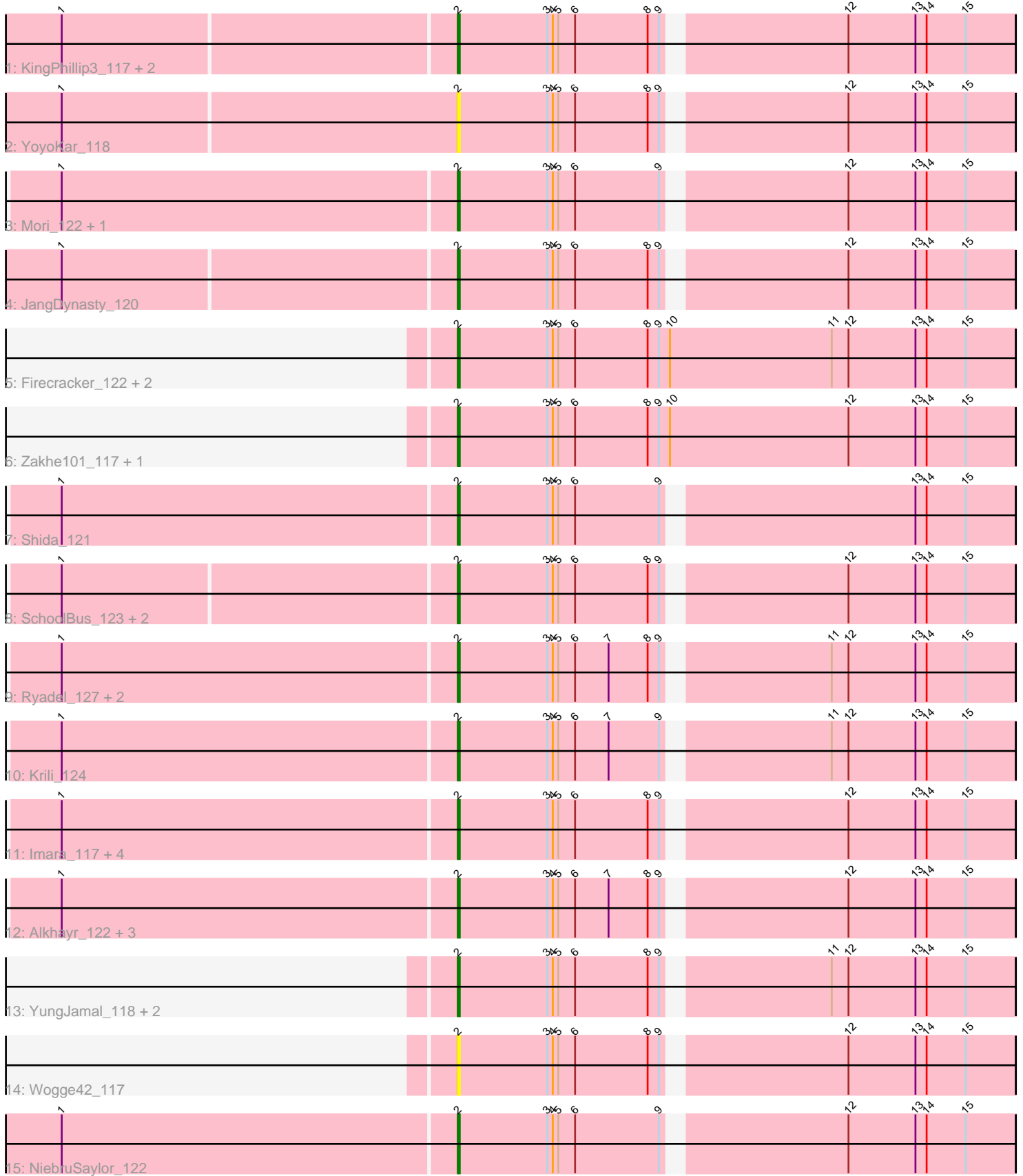


Pham 298644



Note: Tracks are now grouped by subcluster and scaled. Switching in subcluster is indicated by changes in track color. Track scale is now set by default to display the region 30 bp upstream of start 1 to 30 bp downstream of the last possible start. If this default region is judged to be packed too tightly with annotated starts, the track will be further scaled to only show that region of the ORF with annotated starts. This action will be indicated by adding "Zoomed" to the title. For starts, yellow indicates the location of called starts comprised solely of Glimmer/GeneMark auto-annotations, green indicates the location of called starts with at least 1 manual gene annotation.

Pham 298644 Report

This analysis was run 06/08/26 on database version 649.

Pham number 298644 has 34 members, 4 are drafts.

Phages represented in each track:

- Track 1 : KingPhillip3_117, Bora_119, TelAviv_118
- Track 2 : YoyoKar_118
- Track 3 : Mori_122, Vorrps_122
- Track 4 : JangDynasty_120
- Track 5 : Firecracker_122, Wildflower_117, Ashwin_117
- Track 6 : Zakhe101_117, Dylan_116
- Track 7 : Shida_121
- Track 8 : SchoolBus_123, Zebo_121, Familton_124
- Track 9 : Ryadel_127, Blessica_121, MadKillah_125
- Track 10 : Krili_124
- Track 11 : Imara_117, Vagabond_121, Idergollasper_126, Catdawg_123, Murai_122
- Track 12 : Alkhayr_122, Winget_122, FoulBall_121, Schuy_122
- Track 13 : YungJamal_118, Smooch_120, Corndog_118
- Track 14 : Wogge42_117
- Track 15 : NiebruSaylor_122

Summary of Final Annotations (See graph section above for start numbers):

The start number called the most often in the published annotations is 2, it was called in 30 of the 30 non-draft genes in the pham.

Genes that call this "Most Annotated" start:

- Alkhayr_122, Ashwin_117, Blessica_121, Bora_119, Catdawg_123, Corndog_118, Dylan_116, Familton_124, Firecracker_122, FoulBall_121, Idergollasper_126, Imara_117, JangDynasty_120, KingPhillip3_117, Krili_124, MadKillah_125, Mori_122, Murai_122, NiebruSaylor_122, Ryadel_127, SchoolBus_123, Schuy_122, Shida_121, Smooch_120, TelAviv_118, Vagabond_121, Vorrps_122, Wildflower_117, Winget_122, Wogge42_117, YoyoKar_118, YungJamal_118, Zakhe101_117, Zebo_121,

Genes that have the "Most Annotated" start but do not call it:

-

Genes that do not have the "Most Annotated" start:

•

Summary by start number:

Start 2:

- Found in 34 of 34 (100.0%) of genes in pham
- Manual Annotations of this start: 30 of 30
- Called 100.0% of time when present
- Phage (with cluster) where this start called: Alkhayr_122 (O), Ashwin_117 (O), Blessica_121 (O), Bora_119 (O), Catdawg_123 (O), Corndog_118 (O), Dylan_116 (O), Familton_124 (O), Firecracker_122 (O), FoulBall_121 (O), Idergollasper_126 (O), Imara_117 (O), JangDynasty_120 (O), KingPhillip3_117 (O), Krili_124 (O), MadKillah_125 (O), Mori_122 (O), Murai_122 (O), NiebruSaylor_122 (O), Ryadel_127 (O), SchoolBus_123 (O), Schuy_122 (O), Shida_121 (O), Smooch_120 (O), TelAviv_118 (O), Vagabond_121 (O), Vorrps_122 (O), Wildflower_117 (O), Winget_122 (O), Wogge42_117 (O), YoyoKar_118 (O), YungJamal_118 (O), Zakhe101_117 (O), Zebo_121 (O),

Summary by clusters:

There is one cluster represented in this pham: O

Info for manual annotations of cluster O:

- Start number 2 was manually annotated 30 times for cluster O.

Gene Information:

Gene: Alkhayr_122 Start: 68144, Stop: 67857, Start Num: 2

Candidate Starts for Alkhayr_122:

(1, 68354), (Start: 2 @68144 has 30 MA's), (3, 68096), (4, 68093), (5, 68090), (6, 68081), (7, 68063), (8, 68042), (9, 68036), (12, 67946), (13, 67910), (14, 67904), (15, 67883),

Gene: Ashwin_117 Start: 67056, Stop: 66757, Start Num: 2

Candidate Starts for Ashwin_117:

(Start: 2 @67056 has 30 MA's), (3, 67008), (4, 67005), (5, 67002), (6, 66993), (8, 66954), (9, 66948), (10, 66942), (11, 66855), (12, 66846), (13, 66810), (14, 66804), (15, 66783),

Gene: Blessica_121 Start: 68810, Stop: 68523, Start Num: 2

Candidate Starts for Blessica_121:

(1, 69020), (Start: 2 @68810 has 30 MA's), (3, 68762), (4, 68759), (5, 68756), (6, 68747), (7, 68729), (8, 68708), (9, 68702), (11, 68621), (12, 68612), (13, 68576), (14, 68570), (15, 68549),

Gene: Bora_119 Start: 68828, Stop: 68541, Start Num: 2

Candidate Starts for Bora_119:

(1, 69035), (Start: 2 @68828 has 30 MA's), (3, 68780), (4, 68777), (5, 68774), (6, 68765), (8, 68726), (9, 68720), (12, 68630), (13, 68594), (14, 68588), (15, 68567),

Gene: Catdawg_123 Start: 69464, Stop: 69177, Start Num: 2

Candidate Starts for Catdawg_123:

(1, 69674), (Start: 2 @69464 has 30 MA's), (3, 69416), (4, 69413), (5, 69410), (6, 69401), (8, 69362), (9, 69356), (12, 69266), (13, 69230), (14, 69224), (15, 69203),

Gene: Corndog_118 Start: 67104, Stop: 66817, Start Num: 2

Candidate Starts for Corndog_118:

(Start: 2 @67104 has 30 MA's), (3, 67056), (4, 67053), (5, 67050), (6, 67041), (8, 67002), (9, 66996), (11, 66915), (12, 66906), (13, 66870), (14, 66864), (15, 66843),

Gene: Dylan_116 Start: 67157, Stop: 66858, Start Num: 2

Candidate Starts for Dylan_116:

(Start: 2 @67157 has 30 MA's), (3, 67109), (4, 67106), (5, 67103), (6, 67094), (8, 67055), (9, 67049), (10, 67043), (12, 66947), (13, 66911), (14, 66905), (15, 66884),

Gene: Familton_124 Start: 69183, Stop: 68896, Start Num: 2

Candidate Starts for Familton_124:

(1, 69390), (Start: 2 @69183 has 30 MA's), (3, 69135), (4, 69132), (5, 69129), (6, 69120), (8, 69081), (9, 69075), (12, 68985), (13, 68949), (14, 68943), (15, 68922),

Gene: Firecracker_122 Start: 68696, Stop: 68397, Start Num: 2

Candidate Starts for Firecracker_122:

(Start: 2 @68696 has 30 MA's), (3, 68648), (4, 68645), (5, 68642), (6, 68633), (8, 68594), (9, 68588), (10, 68582), (11, 68495), (12, 68486), (13, 68450), (14, 68444), (15, 68423),

Gene: FoulBall_121 Start: 68427, Stop: 68140, Start Num: 2

Candidate Starts for FoulBall_121:

(1, 68637), (Start: 2 @68427 has 30 MA's), (3, 68379), (4, 68376), (5, 68373), (6, 68364), (7, 68346), (8, 68325), (9, 68319), (12, 68229), (13, 68193), (14, 68187), (15, 68166),

Gene: Idergollasper_126 Start: 69870, Stop: 69583, Start Num: 2

Candidate Starts for Idergollasper_126:

(1, 70080), (Start: 2 @69870 has 30 MA's), (3, 69822), (4, 69819), (5, 69816), (6, 69807), (8, 69768), (9, 69762), (12, 69672), (13, 69636), (14, 69630), (15, 69609),

Gene: Imara_117 Start: 68177, Stop: 67890, Start Num: 2

Candidate Starts for Imara_117:

(1, 68387), (Start: 2 @68177 has 30 MA's), (3, 68129), (4, 68126), (5, 68123), (6, 68114), (8, 68075), (9, 68069), (12, 67979), (13, 67943), (14, 67937), (15, 67916),

Gene: JangDynasty_120 Start: 68232, Stop: 67945, Start Num: 2

Candidate Starts for JangDynasty_120:

(1, 68439), (Start: 2 @68232 has 30 MA's), (3, 68184), (4, 68181), (5, 68178), (6, 68169), (8, 68130), (9, 68124), (12, 68034), (13, 67998), (14, 67992), (15, 67971),

Gene: KingPhillip3_117 Start: 68739, Stop: 68452, Start Num: 2

Candidate Starts for KingPhillip3_117:

(1, 68946), (Start: 2 @68739 has 30 MA's), (3, 68691), (4, 68688), (5, 68685), (6, 68676), (8, 68637), (9, 68631), (12, 68541), (13, 68505), (14, 68499), (15, 68478),

Gene: Krili_124 Start: 69021, Stop: 68734, Start Num: 2

Candidate Starts for Krili_124:

(1, 69231), (Start: 2 @69021 has 30 MA's), (3, 68973), (4, 68970), (5, 68967), (6, 68958), (7, 68940), (9, 68913), (11, 68832), (12, 68823), (13, 68787), (14, 68781), (15, 68760),

Gene: MadKillah_125 Start: 68497, Stop: 68210, Start Num: 2

Candidate Starts for MadKillah_125:

(1, 68707), (Start: 2 @68497 has 30 MA's), (3, 68449), (4, 68446), (5, 68443), (6, 68434), (7, 68416), (8, 68395), (9, 68389), (11, 68308), (12, 68299), (13, 68263), (14, 68257), (15, 68236),

Gene: Mori_122 Start: 69047, Stop: 68760, Start Num: 2

Candidate Starts for Mori_122:

(1, 69257), (Start: 2 @69047 has 30 MA's), (3, 68999), (4, 68996), (5, 68993), (6, 68984), (9, 68939), (12, 68849), (13, 68813), (14, 68807), (15, 68786),

Gene: Murai_122 Start: 68865, Stop: 68578, Start Num: 2

Candidate Starts for Murai_122:

(1, 69075), (Start: 2 @68865 has 30 MA's), (3, 68817), (4, 68814), (5, 68811), (6, 68802), (8, 68763), (9, 68757), (12, 68667), (13, 68631), (14, 68625), (15, 68604),

Gene: NiebruSaylor_122 Start: 68161, Stop: 67874, Start Num: 2

Candidate Starts for NiebruSaylor_122:

(1, 68371), (Start: 2 @68161 has 30 MA's), (3, 68113), (4, 68110), (5, 68107), (6, 68098), (9, 68053), (12, 67963), (13, 67927), (14, 67921), (15, 67900),

Gene: Ryadel_127 Start: 70013, Stop: 69726, Start Num: 2

Candidate Starts for Ryadel_127:

(1, 70223), (Start: 2 @70013 has 30 MA's), (3, 69965), (4, 69962), (5, 69959), (6, 69950), (7, 69932), (8, 69911), (9, 69905), (11, 69824), (12, 69815), (13, 69779), (14, 69773), (15, 69752),

Gene: SchoolBus_123 Start: 69047, Stop: 68760, Start Num: 2

Candidate Starts for SchoolBus_123:

(1, 69254), (Start: 2 @69047 has 30 MA's), (3, 68999), (4, 68996), (5, 68993), (6, 68984), (8, 68945), (9, 68939), (12, 68849), (13, 68813), (14, 68807), (15, 68786),

Gene: Schuy_122 Start: 68206, Stop: 67919, Start Num: 2

Candidate Starts for Schuy_122:

(1, 68416), (Start: 2 @68206 has 30 MA's), (3, 68158), (4, 68155), (5, 68152), (6, 68143), (7, 68125), (8, 68104), (9, 68098), (12, 68008), (13, 67972), (14, 67966), (15, 67945),

Gene: Shida_121 Start: 68708, Stop: 68421, Start Num: 2

Candidate Starts for Shida_121:

(1, 68918), (Start: 2 @68708 has 30 MA's), (3, 68660), (4, 68657), (5, 68654), (6, 68645), (9, 68600), (13, 68474), (14, 68468), (15, 68447),

Gene: Smooch_120 Start: 68750, Stop: 68481, Start Num: 2

Candidate Starts for Smooch_120:

(Start: 2 @68750 has 30 MA's), (3, 68702), (4, 68699), (5, 68696), (6, 68687), (8, 68648), (9, 68642), (11, 68561), (12, 68552), (13, 68516), (14, 68510), (15, 68489),

Gene: TelAviv_118 Start: 68792, Stop: 68505, Start Num: 2

Candidate Starts for TelAviv_118:

(1, 68999), (Start: 2 @68792 has 30 MA's), (3, 68744), (4, 68741), (5, 68738), (6, 68729), (8, 68690), (9, 68684), (12, 68594), (13, 68558), (14, 68552), (15, 68531),

Gene: Vagabond_121 Start: 68207, Stop: 67920, Start Num: 2

Candidate Starts for Vagabond_121:

(1, 68417), (Start: 2 @68207 has 30 MA's), (3, 68159), (4, 68156), (5, 68153), (6, 68144), (8, 68105), (9, 68099), (12, 68009), (13, 67973), (14, 67967), (15, 67946),

Gene: Vorrps_122 Start: 69046, Stop: 68759, Start Num: 2

Candidate Starts for Vorrps_122:

(1, 69256), (Start: 2 @69046 has 30 MA's), (3, 68998), (4, 68995), (5, 68992), (6, 68983), (9, 68938), (12, 68848), (13, 68812), (14, 68806), (15, 68785),

Gene: Wildflower_117 Start: 66697, Stop: 66398, Start Num: 2

Candidate Starts for Wildflower_117:

(Start: 2 @66697 has 30 MA's), (3, 66649), (4, 66646), (5, 66643), (6, 66634), (8, 66595), (9, 66589), (10, 66583), (11, 66496), (12, 66487), (13, 66451), (14, 66445), (15, 66424),

Gene: Winget_122 Start: 68897, Stop: 68610, Start Num: 2

Candidate Starts for Winget_122:

(1, 69107), (Start: 2 @68897 has 30 MA's), (3, 68849), (4, 68846), (5, 68843), (6, 68834), (7, 68816), (8, 68795), (9, 68789), (12, 68699), (13, 68663), (14, 68657), (15, 68636),

Gene: Wogge42_117 Start: 68239, Stop: 67952, Start Num: 2

Candidate Starts for Wogge42_117:

(Start: 2 @68239 has 30 MA's), (3, 68191), (4, 68188), (5, 68185), (6, 68176), (8, 68137), (9, 68131), (12, 68041), (13, 68005), (14, 67999), (15, 67978),

Gene: YoyoKar_118 Start: 68255, Stop: 67968, Start Num: 2

Candidate Starts for YoyoKar_118:

(1, 68465), (Start: 2 @68255 has 30 MA's), (3, 68207), (4, 68204), (5, 68201), (6, 68192), (8, 68153), (9, 68147), (12, 68057), (13, 68021), (14, 68015), (15, 67994),

Gene: YungJamal_118 Start: 67548, Stop: 67261, Start Num: 2

Candidate Starts for YungJamal_118:

(Start: 2 @67548 has 30 MA's), (3, 67500), (4, 67497), (5, 67494), (6, 67485), (8, 67446), (9, 67440), (11, 67359), (12, 67350), (13, 67314), (14, 67308), (15, 67287),

Gene: Zakhe101_117 Start: 66996, Stop: 66697, Start Num: 2

Candidate Starts for Zakhe101_117:

(Start: 2 @66996 has 30 MA's), (3, 66948), (4, 66945), (5, 66942), (6, 66933), (8, 66894), (9, 66888), (10, 66882), (12, 66786), (13, 66750), (14, 66744), (15, 66723),

Gene: Zebo_121 Start: 68552, Stop: 68265, Start Num: 2

Candidate Starts for Zebo_121:

(1, 68759), (Start: 2 @68552 has 30 MA's), (3, 68504), (4, 68501), (5, 68498), (6, 68489), (8, 68450), (9, 68444), (12, 68354), (13, 68318), (14, 68312), (15, 68291),