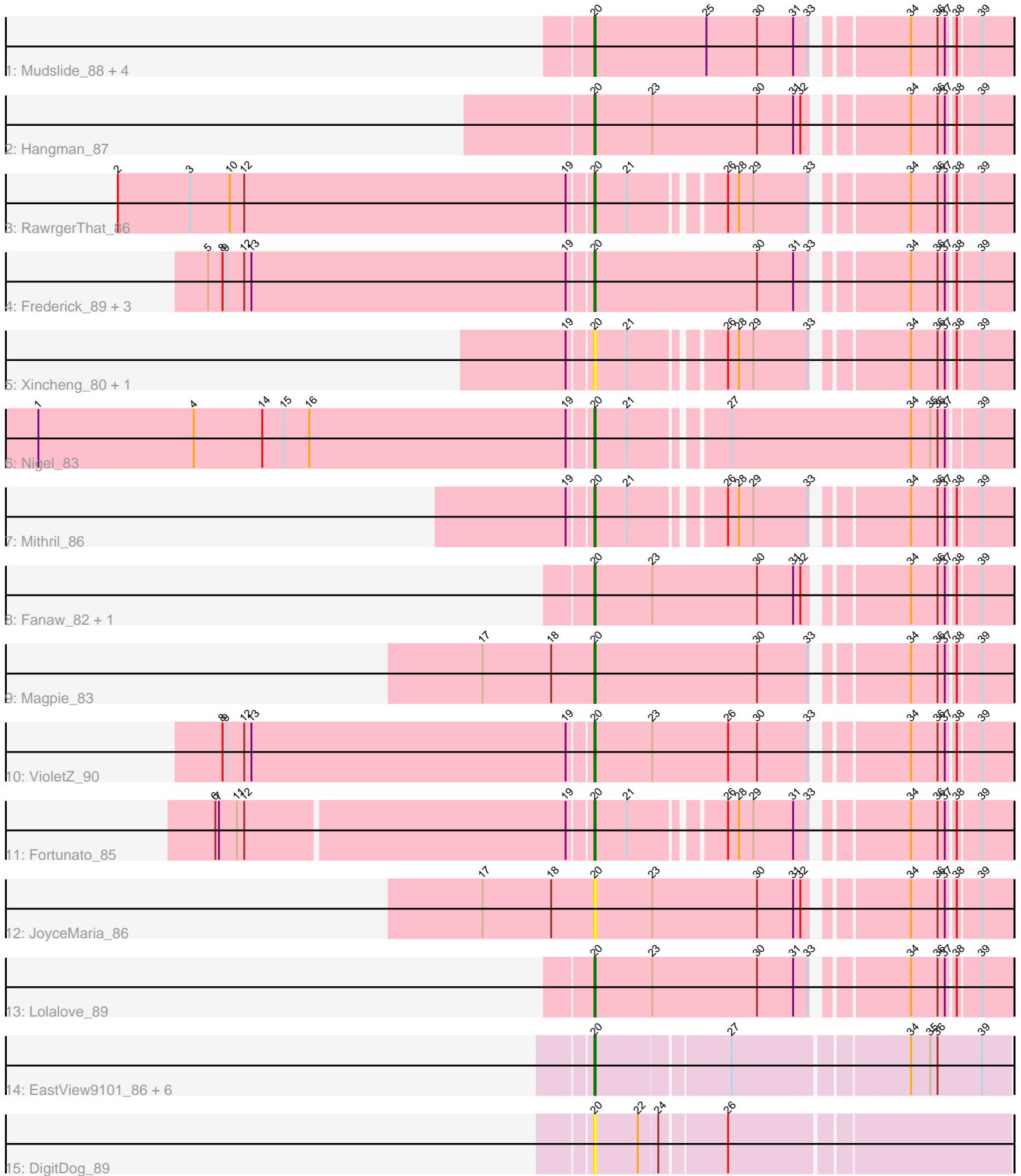


Pham 298676



Note: Tracks are now grouped by subcluster and scaled. Switching in subcluster is indicated by changes in track color. Track scale is now set by default to display the region 30 bp upstream of start 1 to 30 bp downstream of the last possible start. If this default region is judged to be packed too tightly with annotated starts, the track will be further scaled to only show that region of the ORF with annotated starts. This action will be indicated by adding "Zoomed" to the title. For starts, yellow indicates the location of called starts comprised solely of Glimmer/GeneMark auto-annotations, green indicates the location of called starts with at least 1 manual gene annotation.

Pham 298676 Report

This analysis was run 06/08/26 on database version 649.

Pham number 298676 has 30 members, 7 are drafts.

Phages represented in each track:

- Track 1 : Mudslide_88, Austelle_87, Waleliano_86, Heath_81, BrownCNA_88
- Track 2 : Hangman_87
- Track 3 : RawrgerThat_86
- Track 4 : Frederick_89, BobbyK_88, Apex_89, Zemanar_86
- Track 5 : Xincheng_80, JaguarMi_82
- Track 6 : Nigel_83
- Track 7 : Mithril_86
- Track 8 : Fanaw_82, Prince_87
- Track 9 : Magpie_83
- Track 10 : VioletZ_90
- Track 11 : Fortunato_85
- Track 12 : JoyceMaria_86
- Track 13 : Lolalove_89
- Track 14 : EastView9101_86, Rita130_86, Reccee_88, Donny_87, Acadian_87, SirJeffery_85, Suigeneris_88
- Track 15 : DigitDog_89

Summary of Final Annotations (See graph section above for start numbers):

The start number called the most often in the published annotations is 20, it was called in 23 of the 23 non-draft genes in the pham.

Genes that call this "Most Annotated" start:

- Acadian_87, Apex_89, Austelle_87, BobbyK_88, BrownCNA_88, DigitDog_89, Donny_87, EastView9101_86, Fanaw_82, Fortunato_85, Frederick_89, Hangman_87, Heath_81, JaguarMi_82, JoyceMaria_86, Lolalove_89, Magpie_83, Mithril_86, Mudslide_88, Nigel_83, Prince_87, RawrgerThat_86, Reccee_88, Rita130_86, SirJeffery_85, Suigeneris_88, VioletZ_90, Waleliano_86, Xincheng_80, Zemanar_86,

Genes that have the "Most Annotated" start but do not call it:

-

Genes that do not have the "Most Annotated" start:

-

Summary by start number:

Start 20:

- Found in 30 of 30 (100.0%) of genes in pham
- Manual Annotations of this start: 23 of 23
- Called 100.0% of time when present
- Phage (with cluster) where this start called: Acadian_87 (B5), Apex_89 (B4), Austelle_87 (B4), BobbyK_88 (B4), BrownCNA_88 (B4), DigitDog_89 (B5), Donny_87 (B5), EastView9101_86 (B5), Fanaw_82 (B4), Fortunato_85 (B4), Frederick_89 (B4), Hangman_87 (B4), Heath_81 (B4), JaguarMi_82 (B4), JoyceMaria_86 (B4), Lolalove_89 (B4), Magpie_83 (B4), Mithril_86 (B4), Mudslide_88 (B4), Nigel_83 (B4), Prince_87 (B4), RawrgerThat_86 (B4), Reccee_88 (B5), Rita130_86 (B5), SirJeffery_85 (B5), Suigeneris_88 (B5), VioletZ_90 (B4), Waleliano_86 (B4), Xincheng_80 (B4), Zemanar_86 (B4),

Summary by clusters:

There are 2 clusters represented in this pham: B4, B5,

Info for manual annotations of cluster B4:

- Start number 20 was manually annotated 18 times for cluster B4.

Info for manual annotations of cluster B5:

- Start number 20 was manually annotated 5 times for cluster B5.

Gene Information:

Gene: Acadian_87 Start: 65016, Stop: 64696, Start Num: 20

Candidate Starts for Acadian_87:

(Start: 20 @65016 has 23 MA's), (27, 64911), (34, 64776), (35, 64761), (36, 64755), (39, 64719),

Gene: Apex_89 Start: 66595, Stop: 66278, Start Num: 20

Candidate Starts for Apex_89:

(5, 66910), (8, 66898), (9, 66895), (12, 66880), (13, 66874), (19, 66613), (Start: 20 @66595 has 23 MA's), (30, 66460), (31, 66430), (33, 66418), (34, 66355), (36, 66334), (37, 66328), (38, 66322), (39, 66304),

Gene: Austelle_87 Start: 67128, Stop: 66811, Start Num: 20

Candidate Starts for Austelle_87:

(Start: 20 @67128 has 23 MA's), (25, 67035), (30, 66993), (31, 66963), (33, 66951), (34, 66888), (36, 66867), (37, 66861), (38, 66855), (39, 66837),

Gene: BobbyK_88 Start: 66103, Stop: 65786, Start Num: 20

Candidate Starts for BobbyK_88:

(5, 66418), (8, 66406), (9, 66403), (12, 66388), (13, 66382), (19, 66121), (Start: 20 @66103 has 23 MA's), (30, 65968), (31, 65938), (33, 65926), (34, 65863), (36, 65842), (37, 65836), (38, 65830), (39, 65812),

Gene: BrownCNA_88 Start: 66543, Stop: 66226, Start Num: 20

Candidate Starts for BrownCNA_88:

(Start: 20 @66543 has 23 MA's), (25, 66450), (30, 66408), (31, 66378), (33, 66366), (34, 66303), (36, 66282), (37, 66276), (38, 66270), (39, 66252),

Gene: DigitDog_89 Start: 65516, Stop: 65193, Start Num: 20

Candidate Starts for DigitDog_89:

(Start: 20 @65516 has 23 MA's), (22, 65480), (24, 65465), (26, 65414),

Gene: Donny_87 Start: 64850, Stop: 64530, Start Num: 20

Candidate Starts for Donny_87:

(Start: 20 @64850 has 23 MA's), (27, 64745), (34, 64610), (35, 64595), (36, 64589), (39, 64553),

Gene: EastView9101_86 Start: 64761, Stop: 64441, Start Num: 20

Candidate Starts for EastView9101_86:

(Start: 20 @64761 has 23 MA's), (27, 64656), (34, 64521), (35, 64506), (36, 64500), (39, 64464),

Gene: Fanaw_82 Start: 66130, Stop: 65813, Start Num: 20

Candidate Starts for Fanaw_82:

(Start: 20 @66130 has 23 MA's), (23, 66082), (30, 65995), (31, 65965), (32, 65959), (34, 65890), (36, 65869), (37, 65863), (38, 65857), (39, 65839),

Gene: Fortunato_85 Start: 65904, Stop: 65605, Start Num: 20

Candidate Starts for Fortunato_85:

(6, 66207), (7, 66204), (11, 66189), (12, 66183), (19, 65922), (Start: 20 @65904 has 23 MA's), (21, 65877), (26, 65811), (28, 65802), (29, 65790), (31, 65757), (33, 65745), (34, 65682), (36, 65661), (37, 65655), (38, 65649), (39, 65631),

Gene: Frederick_89 Start: 66409, Stop: 66092, Start Num: 20

Candidate Starts for Frederick_89:

(5, 66724), (8, 66712), (9, 66709), (12, 66694), (13, 66688), (19, 66427), (Start: 20 @66409 has 23 MA's), (30, 66274), (31, 66244), (33, 66232), (34, 66169), (36, 66148), (37, 66142), (38, 66136), (39, 66118),

Gene: Hangman_87 Start: 66621, Stop: 66304, Start Num: 20

Candidate Starts for Hangman_87:

(Start: 20 @66621 has 23 MA's), (23, 66573), (30, 66486), (31, 66456), (32, 66450), (34, 66381), (36, 66360), (37, 66354), (38, 66348), (39, 66330),

Gene: Heath_81 Start: 64409, Stop: 64092, Start Num: 20

Candidate Starts for Heath_81:

(Start: 20 @64409 has 23 MA's), (25, 64316), (30, 64274), (31, 64244), (33, 64232), (34, 64169), (36, 64148), (37, 64142), (38, 64136), (39, 64118),

Gene: JaguarMi_82 Start: 66456, Stop: 66157, Start Num: 20

Candidate Starts for JaguarMi_82:

(19, 66474), (Start: 20 @66456 has 23 MA's), (21, 66429), (26, 66363), (28, 66354), (29, 66342), (33, 66297), (34, 66234), (36, 66213), (37, 66207), (38, 66201), (39, 66183),

Gene: JoyceMaria_86 Start: 66447, Stop: 66130, Start Num: 20

Candidate Starts for JoyceMaria_86:

(17, 66540), (18, 66483), (Start: 20 @66447 has 23 MA's), (23, 66399), (30, 66312), (31, 66282), (32, 66276), (34, 66207), (36, 66186), (37, 66180), (38, 66174), (39, 66156),

Gene: Lolalove_89 Start: 66440, Stop: 66123, Start Num: 20

Candidate Starts for Lolalove_89:

(Start: 20 @66440 has 23 MA's), (23, 66392), (30, 66305), (31, 66275), (33, 66263), (34, 66200), (36, 66179), (37, 66173), (38, 66167), (39, 66149),

Gene: Magpie_83 Start: 66123, Stop: 65806, Start Num: 20

Candidate Starts for Magpie_83:

(17, 66216), (18, 66159), (Start: 20 @66123 has 23 MA's), (30, 65988), (33, 65946), (34, 65883), (36, 65862), (37, 65856), (38, 65850), (39, 65832),

Gene: Mithril_86 Start: 66262, Stop: 65963, Start Num: 20

Candidate Starts for Mithril_86:

(19, 66280), (Start: 20 @66262 has 23 MA's), (21, 66235), (26, 66169), (28, 66160), (29, 66148), (33, 66103), (34, 66040), (36, 66019), (37, 66013), (38, 66007), (39, 65989),

Gene: Mudslide_88 Start: 66670, Stop: 66353, Start Num: 20

Candidate Starts for Mudslide_88:

(Start: 20 @66670 has 23 MA's), (25, 66577), (30, 66535), (31, 66505), (33, 66493), (34, 66430), (36, 66409), (37, 66403), (38, 66397), (39, 66379),

Gene: Nigel_83 Start: 64806, Stop: 64486, Start Num: 20

Candidate Starts for Nigel_83:

(1, 65262), (4, 65133), (14, 65076), (15, 65058), (16, 65037), (19, 64824), (Start: 20 @64806 has 23 MA's), (21, 64779), (27, 64710), (34, 64563), (35, 64548), (36, 64542), (37, 64536), (39, 64512),

Gene: Prince_87 Start: 66537, Stop: 66220, Start Num: 20

Candidate Starts for Prince_87:

(Start: 20 @66537 has 23 MA's), (23, 66489), (30, 66402), (31, 66372), (32, 66366), (34, 66297), (36, 66276), (37, 66270), (38, 66264), (39, 66246),

Gene: RawrgerThat_86 Start: 66110, Stop: 65811, Start Num: 20

Candidate Starts for RawrgerThat_86:

(2, 66500), (3, 66440), (10, 66407), (12, 66395), (19, 66128), (Start: 20 @66110 has 23 MA's), (21, 66083), (26, 66017), (28, 66008), (29, 65996), (33, 65951), (34, 65888), (36, 65867), (37, 65861), (38, 65855), (39, 65837),

Gene: Reccee_88 Start: 65320, Stop: 65000, Start Num: 20

Candidate Starts for Reccee_88:

(Start: 20 @65320 has 23 MA's), (27, 65215), (34, 65080), (35, 65065), (36, 65059), (39, 65023),

Gene: Rita130_86 Start: 64990, Stop: 64670, Start Num: 20

Candidate Starts for Rita130_86:

(Start: 20 @64990 has 23 MA's), (27, 64885), (34, 64750), (35, 64735), (36, 64729), (39, 64693),

Gene: SirJeffery_85 Start: 64800, Stop: 64480, Start Num: 20

Candidate Starts for SirJeffery_85:

(Start: 20 @64800 has 23 MA's), (27, 64695), (34, 64560), (35, 64545), (36, 64539), (39, 64503),

Gene: Suigeneris_88 Start: 65238, Stop: 64918, Start Num: 20

Candidate Starts for Suigeneris_88:

(Start: 20 @65238 has 23 MA's), (27, 65133), (34, 64998), (35, 64983), (36, 64977), (39, 64941),

Gene: VioletZ_90 Start: 66627, Stop: 66310, Start Num: 20

Candidate Starts for VioletZ_90:

(8, 66930), (9, 66927), (12, 66912), (13, 66906), (19, 66645), (Start: 20 @66627 has 23 MA's), (23, 66579), (26, 66516), (30, 66492), (33, 66450), (34, 66387), (36, 66366), (37, 66360), (38, 66354), (39, 66336),

Gene: Waleliano_86 Start: 66295, Stop: 65978, Start Num: 20

Candidate Starts for Waleliano_86:

(Start: 20 @66295 has 23 MA's), (25, 66202), (30, 66160), (31, 66130), (33, 66118), (34, 66055), (36, 66034), (37, 66028), (38, 66022), (39, 66004),

Gene: Xincheng_80 Start: 66407, Stop: 66108, Start Num: 20

Candidate Starts for Xincheng_80:

(19, 66425), (Start: 20 @66407 has 23 MA's), (21, 66380), (26, 66314), (28, 66305), (29, 66293), (33, 66248), (34, 66185), (36, 66164), (37, 66158), (38, 66152), (39, 66134),

Gene: Zemanar_86 Start: 66308, Stop: 65991, Start Num: 20

Candidate Starts for Zemanar_86:

(5, 66623), (8, 66611), (9, 66608), (12, 66593), (13, 66587), (19, 66326), (Start: 20 @66308 has 23 MA's), (30, 66173), (31, 66143), (33, 66131), (34, 66068), (36, 66047), (37, 66041), (38, 66035), (39, 66017),