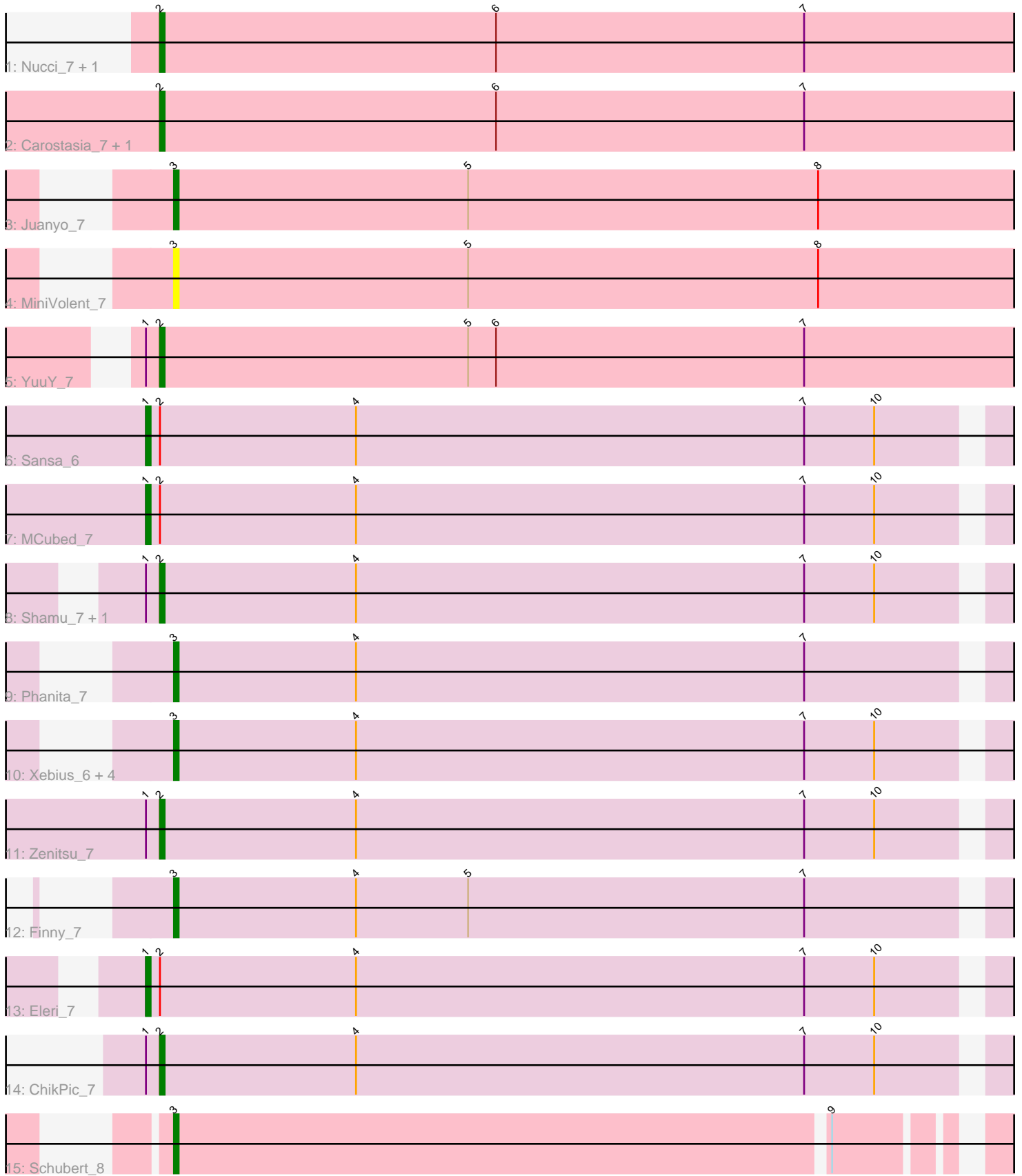


Pham 298785



Note: Tracks are now grouped by subcluster and scaled. Switching in subcluster is indicated by changes in track color. Track scale is now set by default to display the region 30 bp upstream of start 1 to 30 bp downstream of the last possible start. If this default region is judged to be packed too tightly with annotated starts, the track will be further scaled to only show that region of the ORF with annotated starts. This action will be indicated by adding "Zoomed" to the title. For starts, yellow indicates the location of called starts comprised solely of Glimmer/GeneMark auto-annotations, green indicates the location of called starts with at least 1 manual gene annotation.

Pham 298785 Report

This analysis was run 06/08/26 on database version 649.

Pham number 298785 has 22 members, 2 are drafts.

Phages represented in each track:

- Track 1 : Nucci_7, Mandalorian_7
- Track 2 : Carostasia_7, Quartz_7
- Track 3 : Juanyo_7
- Track 4 : MiniVolent_7
- Track 5 : YuuY_7
- Track 6 : Sansa_6
- Track 7 : MCubed_7
- Track 8 : Shamu_7, PSirce_7
- Track 9 : Phanita_7
- Track 10 : Xebius_6, Glamour_6, Saratos_7, ColaCorta_7, Andromedas_7
- Track 11 : Zenitsu_7
- Track 12 : Finny_7
- Track 13 : Eleri_7
- Track 14 : ChikPic_7
- Track 15 : Schubert_8

Summary of Final Annotations (See graph section above for start numbers):

The start number called the most often in the published annotations is 2, it was called in 9 of the 20 non-draft genes in the pham.

Genes that call this "Most Annotated" start:

- Carostasia_7, ChikPic_7, Mandalorian_7, Nucci_7, PSirce_7, Quartz_7, Shamu_7, YuuY_7, Zenitsu_7,

Genes that have the "Most Annotated" start but do not call it:

- Eleri_7, MCubed_7, Sansa_6,

Genes that do not have the "Most Annotated" start:

- Andromedas_7, ColaCorta_7, Finny_7, Glamour_6, Juanyo_7, MiniVolent_7, Phanita_7, Saratos_7, Schubert_8, Xebius_6,

Summary by start number:

Start 1:

- Found in 8 of 22 (36.4%) of genes in pham
- Manual Annotations of this start: 3 of 20
- Called 37.5% of time when present
- Phage (with cluster) where this start called: Eleri_7 (EA2), MCubed_7 (EA2), Sansa_6 (EA2),

Start 2:

- Found in 12 of 22 (54.5%) of genes in pham
- Manual Annotations of this start: 9 of 20
- Called 75.0% of time when present
- Phage (with cluster) where this start called: Carostasia_7 (EA10), ChikPic_7 (EA2), Mandalorian_7 (EA10), Nucci_7 (EA10), PSirce_7 (EA2), Quartz_7 (EA10), Shamu_7 (EA2), YuuY_7 (EA10), Zenitsu_7 (EA2),

Start 3:

- Found in 10 of 22 (45.5%) of genes in pham
- Manual Annotations of this start: 8 of 20
- Called 100.0% of time when present
- Phage (with cluster) where this start called: Andromedas_7 (EA2), ColaCorta_7 (EA2), Finny_7 (EA2), Glamour_6 (EA2), Juanyo_7 (EA10), MiniVolent_7 (EA10), Phanita_7 (EA2), Saratos_7 (EA2), Schubert_8 (EA8), Xebius_6 (EA2),

Summary by clusters:

There are 3 clusters represented in this pham: EA8, EA2, EA10,

Info for manual annotations of cluster EA10:

- Start number 2 was manually annotated 5 times for cluster EA10.
- Start number 3 was manually annotated 1 time for cluster EA10.

Info for manual annotations of cluster EA2:

- Start number 1 was manually annotated 3 times for cluster EA2.
- Start number 2 was manually annotated 4 times for cluster EA2.
- Start number 3 was manually annotated 6 times for cluster EA2.

Info for manual annotations of cluster EA8:

- Start number 3 was manually annotated 1 time for cluster EA8.

Gene Information:

Gene: Andromedas_7 Start: 5823, Stop: 6071, Start Num: 3

Candidate Starts for Andromedas_7:

(Start: 3 @5823 has 8 MA's), (4, 5862), (7, 5958), (10, 5973),

Gene: Carostasia_7 Start: 5977, Stop: 6258, Start Num: 2

Candidate Starts for Carostasia_7:

(Start: 2 @5977 has 9 MA's), (6, 6049), (7, 6115),

Gene: ChikPic_7 Start: 5836, Stop: 6087, Start Num: 2

Candidate Starts for ChikPic_7:

(Start: 1 @5833 has 3 MA's), (Start: 2 @5836 has 9 MA's), (4, 5878), (7, 5974), (10, 5989),

Gene: ColaCorta_7 Start: 5823, Stop: 6071, Start Num: 3

Candidate Starts for ColaCorta_7:

(Start: 3 @5823 has 8 MA's), (4, 5862), (7, 5958), (10, 5973),

Gene: Eleri_7 Start: 5830, Stop: 6084, Start Num: 1

Candidate Starts for Eleri_7:

(Start: 1 @5830 has 3 MA's), (Start: 2 @5833 has 9 MA's), (4, 5875), (7, 5971), (10, 5986),

Gene: Finny_7 Start: 5824, Stop: 6072, Start Num: 3

Candidate Starts for Finny_7:

(Start: 3 @5824 has 8 MA's), (4, 5863), (5, 5887), (7, 5959),

Gene: Glamour_6 Start: 5824, Stop: 6072, Start Num: 3

Candidate Starts for Glamour_6:

(Start: 3 @5824 has 8 MA's), (4, 5863), (7, 5959), (10, 5974),

Gene: Juanyo_7 Start: 5964, Stop: 6221, Start Num: 3

Candidate Starts for Juanyo_7:

(Start: 3 @5964 has 8 MA's), (5, 6027), (8, 6102),

Gene: MCubed_7 Start: 5842, Stop: 6096, Start Num: 1

Candidate Starts for MCubed_7:

(Start: 1 @5842 has 3 MA's), (Start: 2 @5845 has 9 MA's), (4, 5887), (7, 5983), (10, 5998),

Gene: Mandalorian_7 Start: 5977, Stop: 6258, Start Num: 2

Candidate Starts for Mandalorian_7:

(Start: 2 @5977 has 9 MA's), (6, 6049), (7, 6115),

Gene: MiniVolent_7 Start: 5950, Stop: 6207, Start Num: 3

Candidate Starts for MiniVolent_7:

(Start: 3 @5950 has 8 MA's), (5, 6013), (8, 6088),

Gene: Nucci_7 Start: 5965, Stop: 6246, Start Num: 2

Candidate Starts for Nucci_7:

(Start: 2 @5965 has 9 MA's), (6, 6037), (7, 6103),

Gene: PSirce_7 Start: 5832, Stop: 6083, Start Num: 2

Candidate Starts for PSirce_7:

(Start: 1 @5829 has 3 MA's), (Start: 2 @5832 has 9 MA's), (4, 5874), (7, 5970), (10, 5985),

Gene: Phanita_7 Start: 5824, Stop: 6072, Start Num: 3

Candidate Starts for Phanita_7:

(Start: 3 @5824 has 8 MA's), (4, 5863), (7, 5959),

Gene: Quartz_7 Start: 5977, Stop: 6258, Start Num: 2

Candidate Starts for Quartz_7:

(Start: 2 @5977 has 9 MA's), (6, 6049), (7, 6115),

Gene: Sansa_6 Start: 5838, Stop: 6092, Start Num: 1

Candidate Starts for Sansa_6:

(Start: 1 @5838 has 3 MA's), (Start: 2 @5841 has 9 MA's), (4, 5883), (7, 5979), (10, 5994),

Gene: Saratos_7 Start: 5824, Stop: 6072, Start Num: 3
Candidate Starts for Saratos_7:
(Start: 3 @5824 has 8 MA's), (4, 5863), (7, 5959), (10, 5974),

Gene: Schubert_8 Start: 6233, Stop: 6475, Start Num: 3
Candidate Starts for Schubert_8:
(Start: 3 @6233 has 8 MA's), (9, 6371),

Gene: Shamu_7 Start: 5833, Stop: 6084, Start Num: 2
Candidate Starts for Shamu_7:
(Start: 1 @5830 has 3 MA's), (Start: 2 @5833 has 9 MA's), (4, 5875), (7, 5971), (10, 5986),

Gene: Xebius_6 Start: 5824, Stop: 6072, Start Num: 3
Candidate Starts for Xebius_6:
(Start: 3 @5824 has 8 MA's), (4, 5863), (7, 5959), (10, 5974),

Gene: YuuY_7 Start: 5949, Stop: 6248, Start Num: 2
Candidate Starts for YuuY_7:
(Start: 1 @5946 has 3 MA's), (Start: 2 @5949 has 9 MA's), (5, 6015), (6, 6021), (7, 6087),

Gene: Zenitsu_7 Start: 5845, Stop: 6096, Start Num: 2
Candidate Starts for Zenitsu_7:
(Start: 1 @5842 has 3 MA's), (Start: 2 @5845 has 9 MA's), (4, 5887), (7, 5983), (10, 5998),