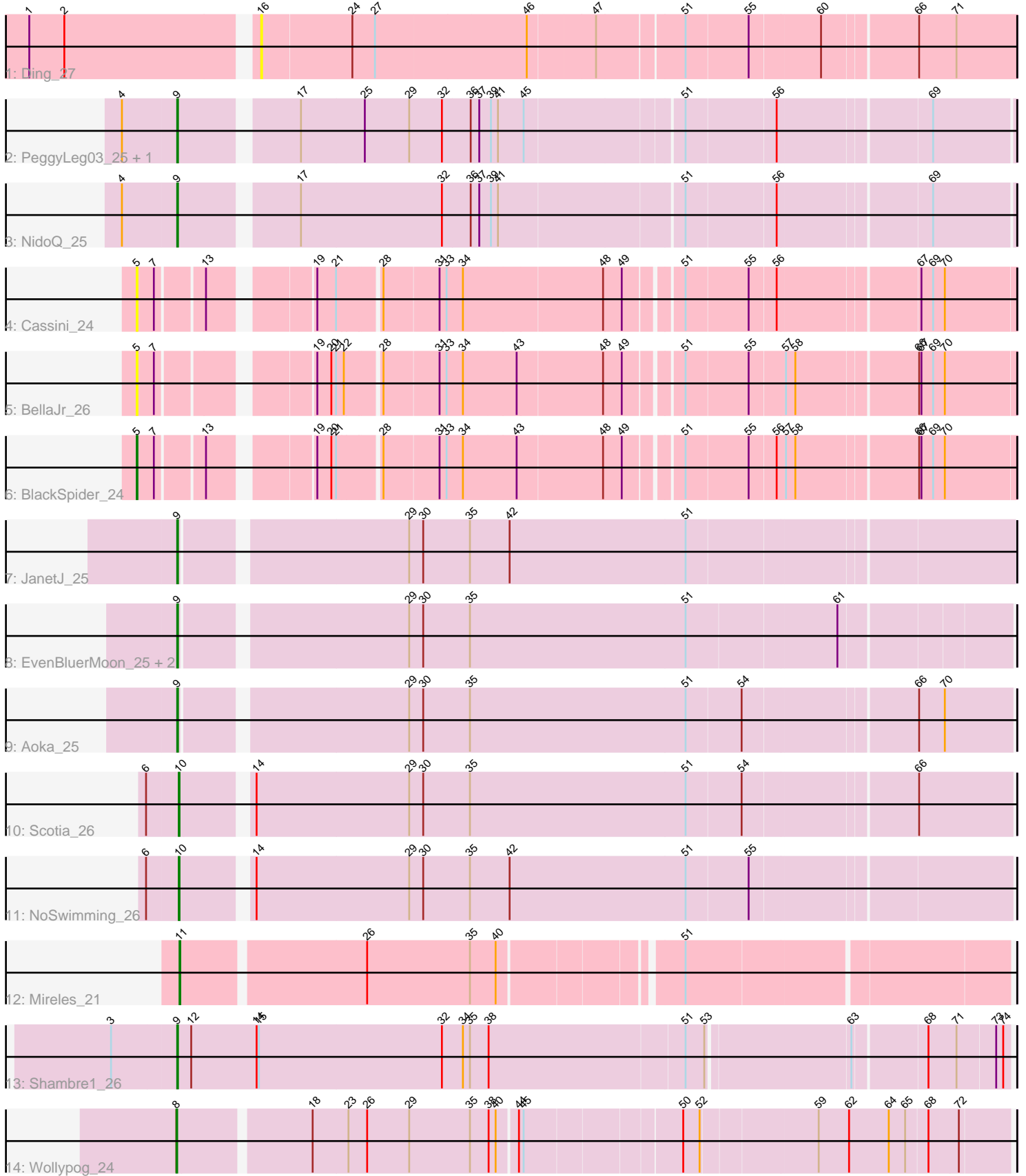


Pham 298875



Note: Tracks are now grouped by subcluster and scaled. Switching in subcluster is indicated by changes in track color. Track scale is now set by default to display the region 30 bp upstream of start 1 to 30 bp downstream of the last possible start. If this default region is judged to be packed too tightly with annotated starts, the track will be further scaled to only show that region of the ORF with annotated starts. This action will be indicated by adding "Zoomed" to the title. For starts, yellow indicates the location of called starts comprised solely of Glimmer/GeneMark auto-annotations, green indicates the location of called starts with at least 1 manual gene annotation.

## Pham 298875 Report

This analysis was run 06/08/26 on database version 649.

Pham number 298875 has 17 members, 3 are drafts.

Phages represented in each track:

- Track 1 : Ding\_27
- Track 2 : PeggyLeg03\_25, Constance\_25
- Track 3 : NidoQ\_25
- Track 4 : Cassini\_24
- Track 5 : BellaJr\_26
- Track 6 : BlackSpider\_24
- Track 7 : JanetJ\_25
- Track 8 : EvenBluerMoon\_25, Hereford\_26, PrairieDogTown\_25
- Track 9 : Aoka\_25
- Track 10 : Scotia\_26
- Track 11 : NoSwimming\_26
- Track 12 : Mireles\_21
- Track 13 : Shambre1\_26
- Track 14 : Wollypog\_24

### ***Summary of Final Annotations (See graph section above for start numbers):***

The start number called the most often in the published annotations is 9, it was called in 9 of the 14 non-draft genes in the pham.

Genes that call this "Most Annotated" start:

- Aoka\_25, Constance\_25, EvenBluerMoon\_25, Hereford\_26, JanetJ\_25, NidoQ\_25, PeggyLeg03\_25, PrairieDogTown\_25, Shambre1\_26,

Genes that have the "Most Annotated" start but do not call it:

- 

Genes that do not have the "Most Annotated" start:

- BellaJr\_26, BlackSpider\_24, Cassini\_24, Ding\_27, Mireles\_21, NoSwimming\_26, Scotia\_26, Wollypog\_24,

### **Summary by start number:**

Start 5:

- Found in 3 of 17 ( 17.6% ) of genes in pham
- Manual Annotations of this start: 1 of 14
- Called 100.0% of time when present
- Phage (with cluster) where this start called: BellaJr\_26 (FN), BlackSpider\_24 (FN), Cassini\_24 (FN),

Start 8:

- Found in 1 of 17 ( 5.9% ) of genes in pham
- Manual Annotations of this start: 1 of 14
- Called 100.0% of time when present
- Phage (with cluster) where this start called: Wollypog\_24 (singleton),

Start 9:

- Found in 9 of 17 ( 52.9% ) of genes in pham
- Manual Annotations of this start: 9 of 14
- Called 100.0% of time when present
- Phage (with cluster) where this start called: Aoka\_25 (FO), Constance\_25 (FA), EvenBluerMoon\_25 (FO), Hereford\_26 (FO), JanetJ\_25 (FO), NidoQ\_25 (FA), PeggyLeg03\_25 (FA), PrairieDogTown\_25 (FO), Shambre1\_26 (singleton),

Start 10:

- Found in 2 of 17 ( 11.8% ) of genes in pham
- Manual Annotations of this start: 2 of 14
- Called 100.0% of time when present
- Phage (with cluster) where this start called: NoSwimming\_26 (FO), Scotia\_26 (FO),

Start 11:

- Found in 1 of 17 ( 5.9% ) of genes in pham
- Manual Annotations of this start: 1 of 14
- Called 100.0% of time when present
- Phage (with cluster) where this start called: Mireles\_21 (FR),

Start 16:

- Found in 1 of 17 ( 5.9% ) of genes in pham
- No Manual Annotations of this start.
- Called 100.0% of time when present
- Phage (with cluster) where this start called: Ding\_27 (AY),

**Summary by clusters:**

There are 6 clusters represented in this pham: singleton, FR, FA, AY, FN, FO,

Info for manual annotations of cluster FA:

- Start number 9 was manually annotated 3 times for cluster FA.

Info for manual annotations of cluster FN:

- Start number 5 was manually annotated 1 time for cluster FN.

Info for manual annotations of cluster FO:

- Start number 9 was manually annotated 5 times for cluster FO.
- Start number 10 was manually annotated 2 times for cluster FO.

Info for manual annotations of cluster FR:

•Start number 11 was manually annotated 1 time for cluster FR.

**Gene Information:**

Gene: Aoka\_25 Start: 22246, Stop: 23265, Start Num: 9

Candidate Starts for Aoka\_25:

(Start: 9 @22246 has 9 MA's), (29, 22516), (30, 22534), (35, 22594), (51, 22870), (54, 22939), (66, 23146), (70, 23179),

Gene: BellaJr\_26 Start: 20275, Stop: 21285, Start Num: 5

Candidate Starts for BellaJr\_26:

(Start: 5 @20275 has 1 MA's), (7, 20296), (19, 20461), (20, 20479), (21, 20485), (22, 20494), (28, 20533), (31, 20602), (33, 20611), (34, 20632), (43, 20698), (48, 20803), (49, 20824), (51, 20887), (55, 20965), (57, 21007), (58, 21019), (66, 21163), (67, 21166), (69, 21181), (70, 21196),

Gene: BlackSpider\_24 Start: 19133, Stop: 20143, Start Num: 5

Candidate Starts for BlackSpider\_24:

(Start: 5 @19133 has 1 MA's), (7, 19154), (13, 19208), (19, 19319), (20, 19337), (21, 19343), (28, 19391), (31, 19460), (33, 19469), (34, 19490), (43, 19556), (48, 19661), (49, 19682), (51, 19745), (55, 19823), (56, 19856), (57, 19865), (58, 19877), (66, 20021), (67, 20024), (69, 20039), (70, 20054),

Gene: Cassini\_24 Start: 19370, Stop: 20380, Start Num: 5

Candidate Starts for Cassini\_24:

(Start: 5 @19370 has 1 MA's), (7, 19391), (13, 19445), (19, 19556), (21, 19580), (28, 19628), (31, 19697), (33, 19706), (34, 19727), (48, 19898), (49, 19919), (51, 19982), (55, 20060), (56, 20093), (67, 20261), (69, 20276), (70, 20291),

Gene: Constance\_25 Start: 19765, Stop: 20766, Start Num: 9

Candidate Starts for Constance\_25:

(4, 19696), (Start: 9 @19765 has 9 MA's), (17, 19900), (25, 19981), (29, 20038), (32, 20080), (36, 20116), (37, 20125), (39, 20140), (41, 20149), (45, 20182), (51, 20371), (56, 20482), (69, 20665),

Gene: Ding\_27 Start: 19468, Stop: 20382, Start Num: 16

Candidate Starts for Ding\_27:

(1, 19195), (2, 19240), (16, 19468), (24, 19582), (27, 19609), (46, 19798), (47, 19879), (51, 19981), (55, 20059), (60, 20146), (66, 20257), (71, 20305),

Gene: EvenBluerMoon\_25 Start: 22281, Stop: 23297, Start Num: 9

Candidate Starts for EvenBluerMoon\_25:

(Start: 9 @22281 has 9 MA's), (29, 22551), (30, 22569), (35, 22629), (51, 22905), (61, 23091),

Gene: Hereford\_26 Start: 22115, Stop: 23131, Start Num: 9

Candidate Starts for Hereford\_26:

(Start: 9 @22115 has 9 MA's), (29, 22385), (30, 22403), (35, 22463), (51, 22739), (61, 22925),

Gene: JanetJ\_25 Start: 22385, Stop: 23407, Start Num: 9

Candidate Starts for JanetJ\_25:

(Start: 9 @22385 has 9 MA's), (29, 22655), (30, 22673), (35, 22733), (42, 22784), (51, 23009),

Gene: Mireles\_21 Start: 13946, Stop: 14941, Start Num: 11

Candidate Starts for Mireles\_21:

(Start: 11 @13946 has 1 MA's), (26, 14171), (35, 14303), (40, 14336), (51, 14546),

Gene: NidoQ\_25 Start: 19779, Stop: 20783, Start Num: 9

Candidate Starts for NidoQ\_25:

(4, 19710), (Start: 9 @19779 has 9 MA's), (17, 19914), (32, 20094), (36, 20130), (37, 20139), (39, 20154), (41, 20163), (51, 20388), (56, 20499), (69, 20682),

Gene: NoSwimming\_26 Start: 23524, Stop: 24546, Start Num: 10

Candidate Starts for NoSwimming\_26:

(6, 23485), (Start: 10 @23524 has 2 MA's), (14, 23602), (29, 23797), (30, 23815), (35, 23875), (42, 23926), (51, 24151), (55, 24229),

Gene: PeggyLeg03\_25 Start: 19765, Stop: 20766, Start Num: 9

Candidate Starts for PeggyLeg03\_25:

(4, 19696), (Start: 9 @19765 has 9 MA's), (17, 19900), (25, 19981), (29, 20038), (32, 20080), (36, 20116), (37, 20125), (39, 20140), (41, 20149), (45, 20182), (51, 20371), (56, 20482), (69, 20665),

Gene: PrairieDogTown\_25 Start: 22283, Stop: 23299, Start Num: 9

Candidate Starts for PrairieDogTown\_25:

(Start: 9 @22283 has 9 MA's), (29, 22553), (30, 22571), (35, 22631), (51, 22907), (61, 23093),

Gene: Scotia\_26 Start: 23527, Stop: 24549, Start Num: 10

Candidate Starts for Scotia\_26:

(6, 23488), (Start: 10 @23527 has 2 MA's), (14, 23605), (29, 23800), (30, 23818), (35, 23878), (51, 24154), (54, 24223), (66, 24430),

Gene: Shambre1\_26 Start: 20624, Stop: 21655, Start Num: 9

Candidate Starts for Shambre1\_26:

(3, 20543), (Start: 9 @20624 has 9 MA's), (12, 20642), (14, 20726), (15, 20729), (32, 20963), (34, 20990), (35, 20999), (38, 21023), (51, 21269), (53, 21293), (63, 21467), (68, 21554), (71, 21590), (73, 21638), (74, 21647),

Gene: Wollypog\_24 Start: 21256, Stop: 22266, Start Num: 8

Candidate Starts for Wollypog\_24:

(Start: 8 @21256 has 1 MA's), (18, 21415), (23, 21460), (26, 21484), (29, 21538), (35, 21616), (38, 21640), (40, 21649), (44, 21673), (45, 21679), (50, 21868), (52, 21889), (59, 22030), (62, 22069), (64, 22120), (65, 22141), (68, 22168), (72, 22204),