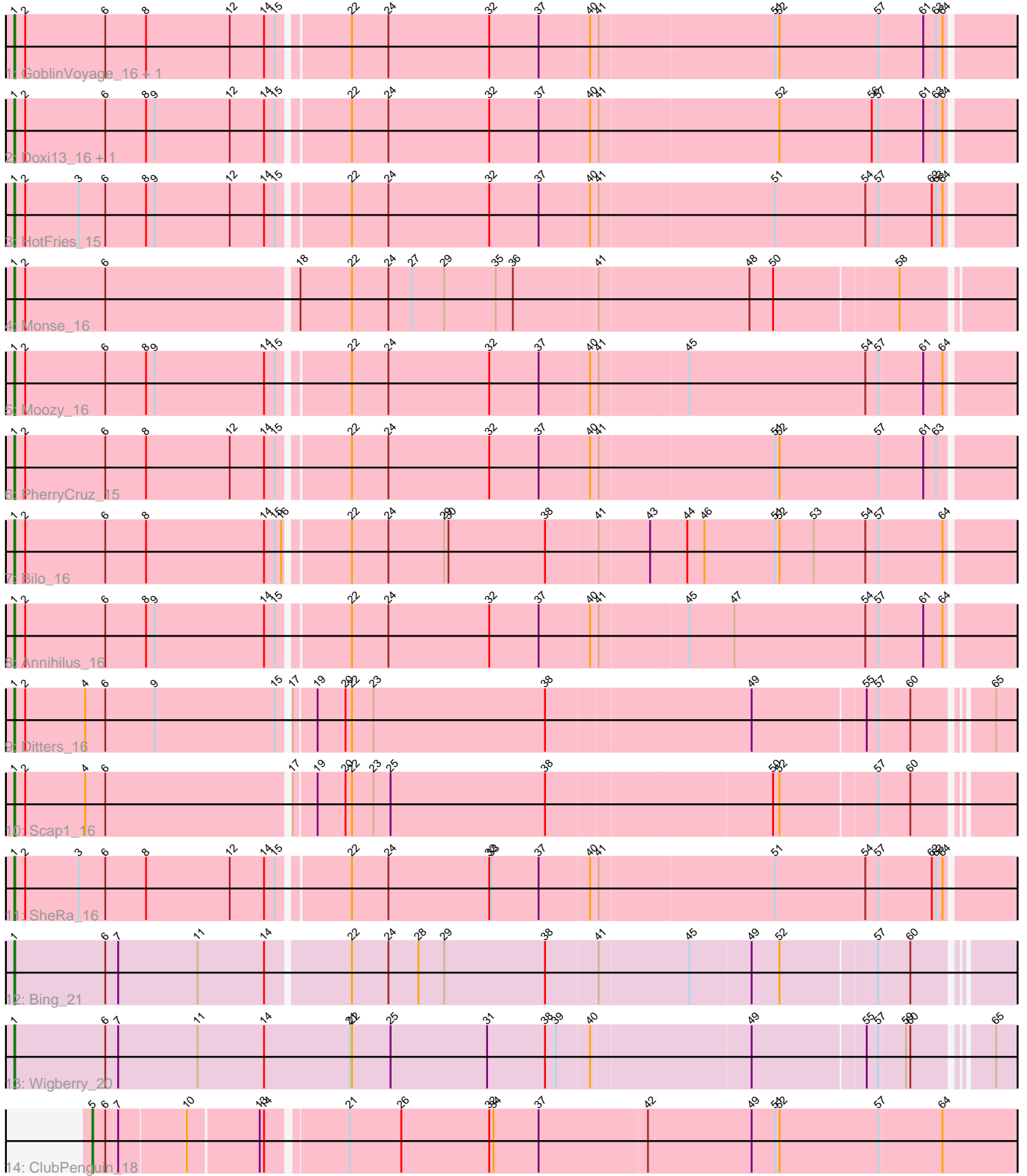


Pham 298894



Note: Tracks are now grouped by subcluster and scaled. Switching in subcluster is indicated by changes in track color. Track scale is now set by default to display the region 30 bp upstream of start 1 to 30 bp downstream of the last possible start. If this default region is judged to be packed too tightly with annotated starts, the track will be further scaled to only show that region of the ORF with annotated starts. This action will be indicated by adding "Zoomed" to the title. For starts, yellow indicates the location of called starts comprised solely of Glimmer/GeneMark auto-annotations, green indicates the location of called starts with at least 1 manual gene annotation.

Pham 298894 Report

This analysis was run 06/08/26 on database version 649.

Pham number 298894 has 16 members, 1 are drafts.

Phages represented in each track:

- Track 1 : GoblinVoyage_16, RavenPuff_15
- Track 2 : Doxi13_16, Sangak_16
- Track 3 : HotFries_15
- Track 4 : Monse_16
- Track 5 : Moozy_16
- Track 6 : PherryCruz_15
- Track 7 : Bilo_16
- Track 8 : Annihilus_16
- Track 9 : Ditters_16
- Track 10 : Scap1_16
- Track 11 : SheRa_16
- Track 12 : Bing_21
- Track 13 : Wigberry_20
- Track 14 : ClubPenguin_18

Summary of Final Annotations (See graph section above for start numbers):

The start number called the most often in the published annotations is 1, it was called in 14 of the 15 non-draft genes in the pham.

Genes that call this "Most Annotated" start:

- Annihilus_16, Bilo_16, Bing_21, Ditters_16, Doxi13_16, GoblinVoyage_16, HotFries_15, Monse_16, Moozy_16, PherryCruz_15, RavenPuff_15, Sangak_16, Scap1_16, SheRa_16, Wigberry_20,

Genes that have the "Most Annotated" start but do not call it:

-

Genes that do not have the "Most Annotated" start:

- ClubPenguin_18,

Summary by start number:

Start 1:

- Found in 15 of 16 (93.8%) of genes in pham
- Manual Annotations of this start: 14 of 15
- Called 100.0% of time when present
- Phage (with cluster) where this start called: Annihilus_16 (BI2), Bilo_16 (BI2), Bing_21 (BI5), Ditters_16 (BI2), Doxi13_16 (BI2), GoblinVoyage_16 (BI2), HotFries_15 (BI2), Monse_16 (BI2), Moozy_16 (BI2), PherryCruz_15 (BI2), RavenPuff_15 (BI2), Sangak_16 (BI2), Scap1_16 (BI2), SheRa_16 (BI2), Wigberry_20 (BI5),

Start 5:

- Found in 1 of 16 (6.2%) of genes in pham
- Manual Annotations of this start: 1 of 15
- Called 100.0% of time when present
- Phage (with cluster) where this start called: ClubPenguin_18 (BI7),

Summary by clusters:

There are 3 clusters represented in this pham: BI7, BI5, BI2,

Info for manual annotations of cluster BI2:

- Start number 1 was manually annotated 12 times for cluster BI2.

Info for manual annotations of cluster BI5:

- Start number 1 was manually annotated 2 times for cluster BI5.

Info for manual annotations of cluster BI7:

- Start number 5 was manually annotated 1 time for cluster BI7.

Gene Information:

Gene: Annihilus_16 Start: 11469, Stop: 12845, Start Num: 1

Candidate Starts for Annihilus_16:

(Start: 1 @11469 has 14 MA's), (2, 11484), (6, 11595), (8, 11652), (9, 11664), (14, 11817), (15, 11832), (22, 11922), (24, 11973), (32, 12114), (37, 12183), (40, 12252), (41, 12261), (45, 12381), (47, 12444), (54, 12627), (57, 12645), (61, 12705), (64, 12732),

Gene: Bilo_16 Start: 11961, Stop: 13340, Start Num: 1

Candidate Starts for Bilo_16:

(Start: 1 @11961 has 14 MA's), (2, 11976), (6, 12087), (8, 12144), (14, 12309), (15, 12324), (16, 12333), (22, 12414), (24, 12465), (29, 12543), (30, 12549), (38, 12684), (41, 12753), (43, 12822), (44, 12873), (46, 12897), (51, 12996), (52, 13002), (53, 13050), (54, 13122), (57, 13140), (64, 13227),

Gene: Bing_21 Start: 13993, Stop: 15351, Start Num: 1

Candidate Starts for Bing_21:

(Start: 1 @13993 has 14 MA's), (6, 14119), (7, 14137), (11, 14248), (14, 14341), (22, 14452), (24, 14503), (28, 14545), (29, 14581), (38, 14722), (41, 14791), (45, 14914), (49, 14998), (52, 15037), (57, 15166), (60, 15208),

Gene: ClubPenguin_18 Start: 13733, Stop: 15007, Start Num: 5

Candidate Starts for ClubPenguin_18:

(Start: 5 @13733 has 1 MA's), (6, 13751), (7, 13766), (10, 13853), (13, 13949), (14, 13955), (21, 14057), (26, 14129), (32, 14252), (34, 14258), (37, 14321), (42, 14471), (49, 14615), (51, 14648), (52, 14654), (57, 14792), (64, 14879),

Gene: Ditters_16 Start: 11957, Stop: 13312, Start Num: 1

Candidate Starts for Ditters_16:

(Start: 1 @11957 has 14 MA's), (2, 11972), (4, 12056), (6, 12083), (9, 12152), (15, 12320), (17, 12332), (19, 12362), (20, 12401), (22, 12410), (23, 12440), (38, 12680), (49, 12959), (55, 13112), (57, 13127), (60, 13169), (65, 13262),

Gene: Doxi13_16 Start: 11439, Stop: 12815, Start Num: 1

Candidate Starts for Doxi13_16:

(Start: 1 @11439 has 14 MA's), (2, 11454), (6, 11565), (8, 11622), (9, 11634), (12, 11739), (14, 11787), (15, 11802), (22, 11892), (24, 11943), (32, 12084), (37, 12153), (40, 12222), (41, 12231), (52, 12477), (56, 12606), (57, 12615), (61, 12675), (63, 12693), (64, 12702),

Gene: GoblinVoyage_16 Start: 11439, Stop: 12815, Start Num: 1

Candidate Starts for GoblinVoyage_16:

(Start: 1 @11439 has 14 MA's), (2, 11454), (6, 11565), (8, 11622), (12, 11739), (14, 11787), (15, 11802), (22, 11892), (24, 11943), (32, 12084), (37, 12153), (40, 12222), (41, 12231), (51, 12471), (52, 12477), (57, 12615), (61, 12675), (63, 12693), (64, 12702),

Gene: HotFries_15 Start: 11439, Stop: 12815, Start Num: 1

Candidate Starts for HotFries_15:

(Start: 1 @11439 has 14 MA's), (2, 11454), (3, 11529), (6, 11565), (8, 11622), (9, 11634), (12, 11739), (14, 11787), (15, 11802), (22, 11892), (24, 11943), (32, 12084), (37, 12153), (40, 12222), (41, 12231), (51, 12471), (54, 12597), (57, 12615), (62, 12687), (63, 12693), (64, 12702),

Gene: Monse_16 Start: 11471, Stop: 12841, Start Num: 1

Candidate Starts for Monse_16:

(Start: 1 @11471 has 14 MA's), (2, 11486), (6, 11597), (18, 11858), (22, 11930), (24, 11981), (27, 12014), (29, 12059), (35, 12131), (36, 12155), (41, 12269), (48, 12476), (50, 12509), (58, 12674),

Gene: Moozy_16 Start: 11456, Stop: 12832, Start Num: 1

Candidate Starts for Moozy_16:

(Start: 1 @11456 has 14 MA's), (2, 11471), (6, 11582), (8, 11639), (9, 11651), (14, 11804), (15, 11819), (22, 11909), (24, 11960), (32, 12101), (37, 12170), (40, 12239), (41, 12248), (45, 12368), (54, 12614), (57, 12632), (61, 12692), (64, 12719),

Gene: PherryCruz_15 Start: 11439, Stop: 12815, Start Num: 1

Candidate Starts for PherryCruz_15:

(Start: 1 @11439 has 14 MA's), (2, 11454), (6, 11565), (8, 11622), (12, 11739), (14, 11787), (15, 11802), (22, 11892), (24, 11943), (32, 12084), (37, 12153), (40, 12222), (41, 12231), (51, 12471), (52, 12477), (57, 12615), (61, 12675), (63, 12693),

Gene: RavenPuff_15 Start: 11439, Stop: 12815, Start Num: 1

Candidate Starts for RavenPuff_15:

(Start: 1 @11439 has 14 MA's), (2, 11454), (6, 11565), (8, 11622), (12, 11739), (14, 11787), (15, 11802), (22, 11892), (24, 11943), (32, 12084), (37, 12153), (40, 12222), (41, 12231), (51, 12471), (52, 12477), (57, 12615), (61, 12675), (63, 12693), (64, 12702),

Gene: Sangak_16 Start: 11440, Stop: 12816, Start Num: 1

Candidate Starts for Sangak_16:

(Start: 1 @11440 has 14 MA's), (2, 11455), (6, 11566), (8, 11623), (9, 11635), (12, 11740), (14, 11788), (15, 11803), (22, 11893), (24, 11944), (32, 12085), (37, 12154), (40, 12223), (41, 12232), (52, 12478), (56, 12607), (57, 12616), (61, 12676), (63, 12694), (64, 12703),

Gene: Scap1_16 Start: 11427, Stop: 12779, Start Num: 1

Candidate Starts for Scap1_16:

(Start: 1 @11427 has 14 MA's), (2, 11442), (4, 11526), (6, 11553), (17, 11802), (19, 11832), (20, 11871), (22, 11880), (23, 11910), (25, 11934), (38, 12150), (50, 12456), (52, 12465), (57, 12594), (60, 12636),

Gene: SheRa_16 Start: 11439, Stop: 12815, Start Num: 1

Candidate Starts for SheRa_16:

(Start: 1 @11439 has 14 MA's), (2, 11454), (3, 11529), (6, 11565), (8, 11622), (12, 11739), (14, 11787), (15, 11802), (22, 11892), (24, 11943), (32, 12084), (33, 12087), (37, 12153), (40, 12222), (41, 12231), (51, 12471), (54, 12597), (57, 12615), (62, 12687), (63, 12693), (64, 12702),

Gene: Wigberry_20 Start: 13534, Stop: 14904, Start Num: 1

Candidate Starts for Wigberry_20:

(Start: 1 @13534 has 14 MA's), (6, 13660), (7, 13678), (11, 13789), (14, 13882), (21, 14002), (22, 14005), (25, 14059), (31, 14194), (38, 14275), (39, 14290), (40, 14335), (49, 14551), (55, 14704), (57, 14719), (59, 14755), (60, 14761), (65, 14854),