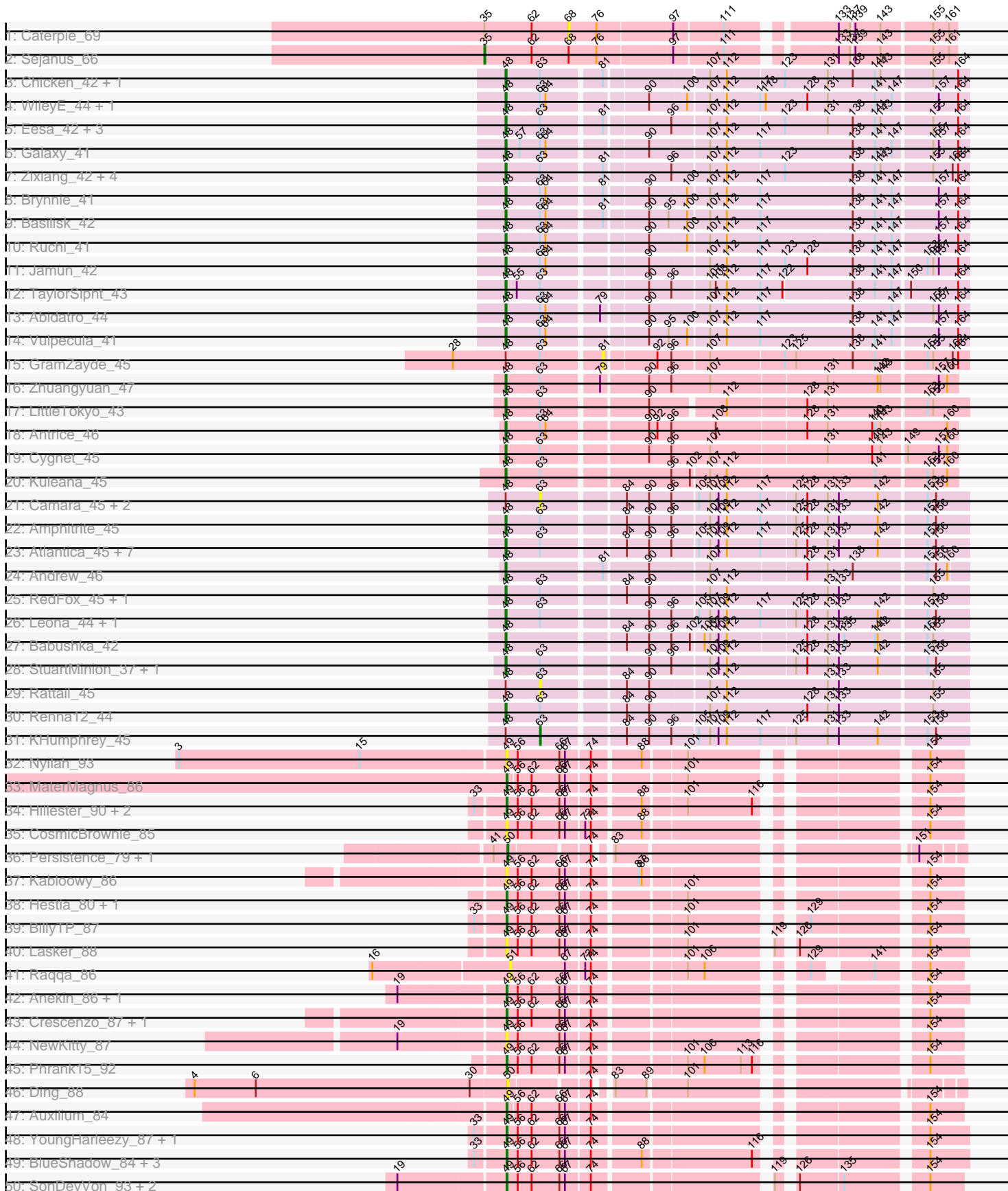
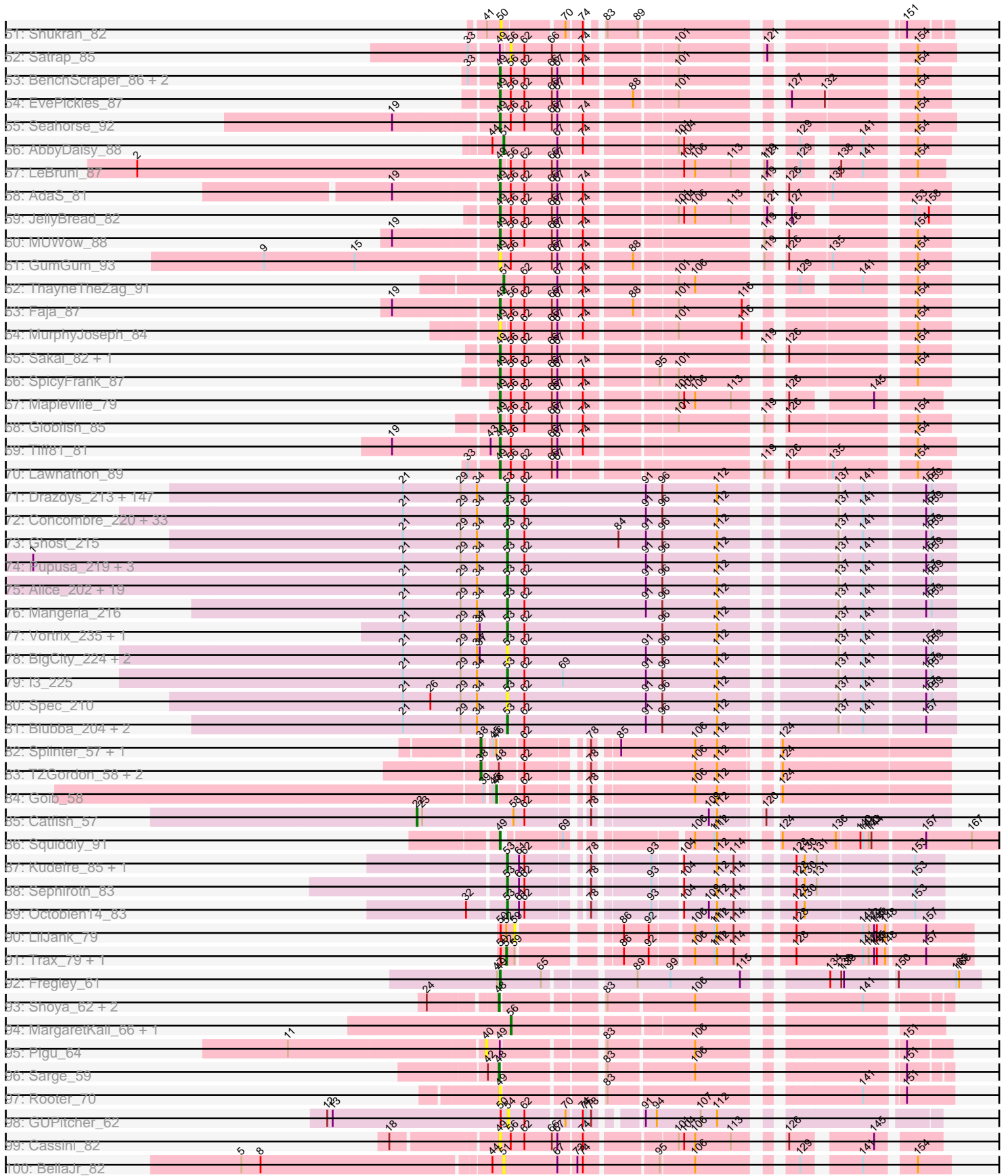


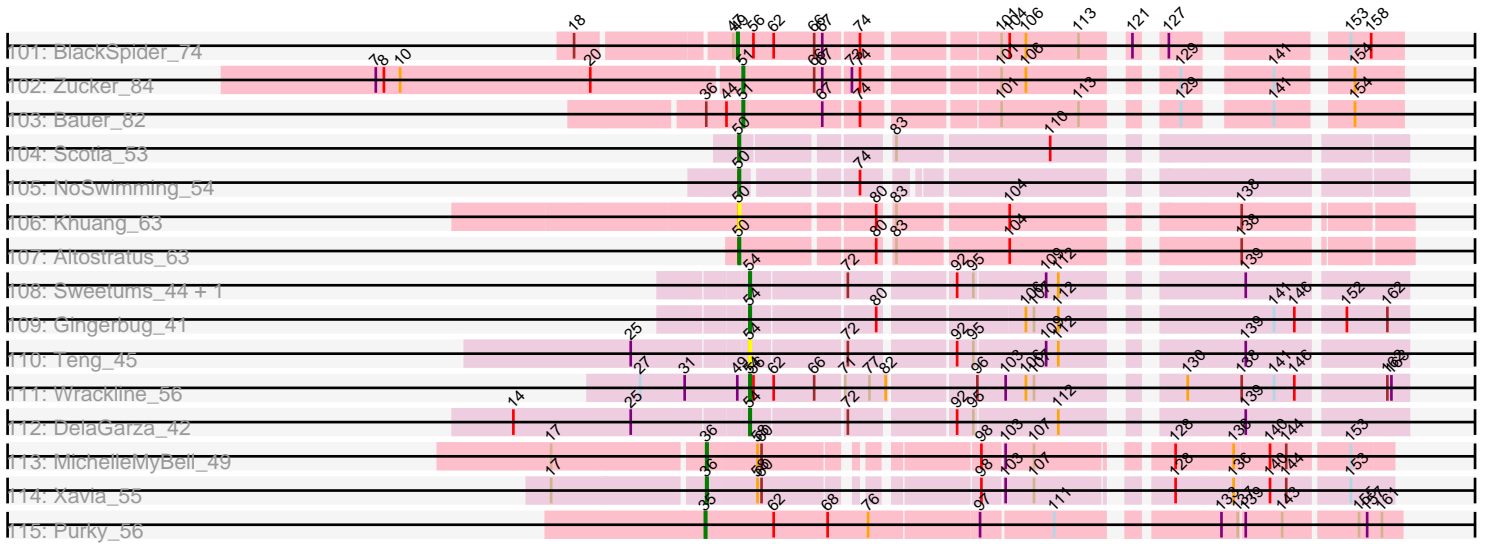
Pham 299769



Pham 299769



Pham 299769



Note: Tracks are now grouped by subcluster and scaled. Switching in subcluster is indicated by changes in track color. Track scale is now set by default to display the region 30 bp upstream of start 1 to 30 bp downstream of the last possible start. If this default region is judged to be packed too tightly with annotated starts, the track will be further scaled to only show that region of the ORF with annotated starts. This action will be indicated by adding "Zoomed" to the title. For starts, yellow indicates the location of called starts comprised solely of Glimmer/GeneMark auto-annotations, green indicates the location of called starts with at least 1 manual gene annotation.

Pham 299769 Report

This analysis was run 06/08/26 on database version 649.

Pham number 299769 has 367 members, 78 are drafts.

Phages represented in each track:

- Track 1 : Caterpie_69
- Track 2 : Sejanus_66
- Track 3 : Chicken_42, Niblet_42
- Track 4 : WileyE_44, Chickaboom_44
- Track 5 : Eesa_42, Westrich_51, Pelletreau_52, Gravel_52
- Track 6 : Galaxy_41
- Track 7 : Zixiang_42, Amanises_45, KendraB23_53, Toad24_45, Shen_42
- Track 8 : Brynnie_41
- Track 9 : Basilisk_42
- Track 10 : Ruchi_41
- Track 11 : Jamun_42
- Track 12 : TaylorSipht_43
- Track 13 : Abidatro_44
- Track 14 : Vulpecula_41
- Track 15 : GramZayde_45
- Track 16 : Zhuangyuan_47
- Track 17 : LittleTokyo_43
- Track 18 : Antrice_46
- Track 19 : Cygnet_45
- Track 20 : Kuleana_45
- Track 21 : Camara_45, Laphuphu24k_44, Oppalora_44
- Track 22 : Amphitrite_45
- Track 23 : Atlantica_45, AdoptaAdorbs_44, HamCheese_45, Glotell_46, DanHam62_45, AmiCi24_44, Juno112_44, Fingolfin_45
- Track 24 : Andrew_46
- Track 25 : RedFox_45, PhluffyCoco_45
- Track 26 : Leona_44, Azaz_46
- Track 27 : Babushka_42
- Track 28 : StuartMinion_37, AlexMinion_47
- Track 29 : Rattail_45
- Track 30 : Renna12_44
- Track 31 : KHumphrey_45
- Track 32 : Nyilah_93
- Track 33 : MaterMagnus_86
- Track 34 : Hillester_90, RadFad_91, BasketStar_86
- Track 35 : CosmicBrownie_85
- Track 36 : Persistence_79, JakeTheSnake_89

- Track 37 : Kabloowy_86
- Track 38 : Hestia_80, Bhageatrice_90
- Track 39 : BillyTP_87
- Track 40 : Lasker_88
- Track 41 : Raqqa_86
- Track 42 : Anekin_86, Aikyam_84
- Track 43 : Crescenzo_87, DarwinJr_89
- Track 44 : NewKitty_87
- Track 45 : Phrank15_92
- Track 46 : Ding_88
- Track 47 : Auxilium_84
- Track 48 : YoungHarleezy_87, Isolde_87
- Track 49 : BlueShadow_84, Raphaella_86, Vopal_87, MidnightRain_92
- Track 50 : SonDevVon_93, Sporco_87, CookieBear_84
- Track 51 : Shukran_82
- Track 52 : Satrap_85
- Track 53 : BenchScraper_86, Richie_89, Windest_90
- Track 54 : EvePickles_87
- Track 55 : Seahorse_92
- Track 56 : AbbyDaisy_88
- Track 57 : LeBruni_87
- Track 58 : AdaS_81
- Track 59 : JellyBread_82
- Track 60 : MUWow_88
- Track 61 : GumGum_93
- Track 62 : ThayneTheZag_91
- Track 63 : Faja_87
- Track 64 : MurphyJoseph_84
- Track 65 : Sakai_82, Gorpy_83
- Track 66 : SpicyFrank_87
- Track 67 : Mapleville_79
- Track 68 : Globfish_85
- Track 69 : Tiff81_81
- Track 70 : Lawnathon_89
- Track 71 : Drazdys_213, BobaPhatt_207, SVoro_211, Bipolarisk_213, Lethe_215, Koguma_214, CharlieB_209, Jessibeth14_215, Ewok_214, Naval22_220, Patter_216, MoMoMixon_213, Breeniome_214, SoilZilla_210, Astraea_209, InigoMontoya_218, Fixie_215, Lukilu_206, Latch_215, Shrimp_217, Burrough_217, Cleatunium_208, Grungle_199, Jedediah_215, LookingGlass_214, Bowman_213, Halldule_208, Teardrop_212, MikeLiesIn_217, Tortoise16_213, Morizzled23_212, Asterius_217, Pleione_219, Adlitam_214, Guwapp_210, Littleton_218, Gabriel_218, Salacia_215, Kamryn_214, Janiyra_218, Fongie_216, Tyke_213, Audrick_217, FudgeTart_210, Naija_216, IkeLoa_207, Duckfeet_209, Rizal_207, RoMag_210, Delylah_217, Willis_216, JustHall_209, Catera_207, Shelob_216, DTDevon_217, Gamgam_216, Issimir_208, Roots515_217, McGee_214, SmallFry_215, Atlantean_215, Rahel_216, YoungMoneyMata_214, Babyland_218, Bangla1971_215, Domi_209, DirtMonster_208, Substance289_212, LifeSavor_214, Daffodil_220, Labradorite_213, Matsumoto_213, Dessert_213, Iota_210, Primadonna_210, Loanshark_212, Khaleesi_214, Essence_212, CindyLou_216, ValleyTerrace_216, YemiJoy2021_216, Jezreel_212, ArcherS7_215, Pivoine_216, Rocha_212, Maby2021_215, Melpomini_210, NedWong_214, Kboogie_219, OrediggerDelux_211, Amataga_216, Momo_216, Dietrick_204, Ading_216, Gizmo_221, Phusco_213, Zeenon_217, ScottMcG_209, NoodleTree_221,

ParkTD_214, Chomp_215, Megamind_212, StubbySaigey_220, PurduePete_215, Zalkecks_214, Ronan_211, Nidhogg_216, Norm_215, Phlegm_219, McWolfish_212, TinyTim_213, ShiaLabeouf_212, SrishMeg2525_212, GlutenPhree_216, BadAgartude_209, JPickles_211, Erdmann_216, Blackdragon_210, Shaqnato_206, Delilah_213, ZygoTaiga_212, Shnickers_213, Derek_212, StephanieG_211, Capablanca_220, Jaygup_211, Bread_210, Bonray_217, Ngannou_212, ET08_203, Napoleon13_212, DrPhinkDaddy_212, Sprinklers_213, Ava3_214, Jemmno_214, EmmaElysia_219, Izajani_213, Wally_213, Lee7_215, Spud_209, Mikro_211, Yucca_215, BananaFence_212, Caravan_206, Darko_214, FoxtrotP1_213, EmToTheThree_215, SilverDipper_219

- Track 72 : Concombre_220, Cali_208, Turret_208, Bigswole_220, PharkleMinkus_217, Phox_216, Bxz1_205, Bezza_204, LordLeafolot_216, EasyJones_218, FrayBell_218, Demodog_221, Trinitium_211, Belieber_208, Nappy_216, Dandelion_223, InterFolia_218, Ablatia_214, LolaVinca_213, ChickenPhender_211, Specks_219, Quasimodo_217, Fludd_215, Cactojaque_210, ErnieJ_208, QBert_207, Chargie21_212, Tainan_216, BeanWater_207, Basquiat_212, Blackbrain_212, LRRHood_208, JigglyPuff_222, Pio_223
- Track 73 : Ghost_215
- Track 74 : Pupusa_219, Sauce_211, JulietS_206, Yassified_212
- Track 75 : Alice_202, DeejaClivia_203, HyRo_203, Flabslab_210, JayJay_217, Stubby_199, Shifa_192, Maturis_212, Moby_211, Pier_216, Montpel_213, NuevoMundo_218, ChaylaJr_213, Sebata_216, Pinkcreek_199, Rabinovish_208, BackyardAgain_211, Lunareta_213, LinStu_214, Moiqah_210
- Track 76 : Mangeria_216
- Track 77 : Vortrix_235, Tonenili_237
- Track 78 : BigCity_224, EggyFarm_224, Grasshills_223
- Track 79 : l3_225
- Track 80 : Spec_210
- Track 81 : Blubba_204, Colt_206, Cane17_206
- Track 82 : Splinter_57, Vendetta_57
- Track 83 : TZGordon_58, DinoDaryn_57, Huffy_57
- Track 84 : Goib_58
- Track 85 : Catfish_57
- Track 86 : Squiddly_91
- Track 87 : Kudefre_85, Syleon_86
- Track 88 : Sephiroth_83
- Track 89 : Octobien14_83
- Track 90 : LilJank_79
- Track 91 : Trax_79, Neville_76
- Track 92 : Fregley_61
- Track 93 : Shoya_62, BrayBeast_62, JeanClaude_61
- Track 94 : MargaretKali_66, Kumotta_70
- Track 95 : Pigu_64
- Track 96 : Sarge_59
- Track 97 : Rooter_70
- Track 98 : GUPitcher_62
- Track 99 : Cassini_82
- Track 100 : BellaJr_82
- Track 101 : BlackSpider_74
- Track 102 : Zucker_84
- Track 103 : Bauer_82
- Track 104 : Scotia_53
- Track 105 : NoSwimming_54

- Track 106 : Khuang_63
- Track 107 : Altostratus_63
- Track 108 : Sweetums_44, Lesiram_43
- Track 109 : Gingerbug_41
- Track 110 : Teng_45
- Track 111 : Wrackline_56
- Track 112 : DelaGarza_42
- Track 113 : MichelleMyBell_49
- Track 114 : Xavia_55
- Track 115 : Purky_56

Summary of Final Annotations (See graph section above for start numbers):

The start number called the most often in the published annotations is 53, it was called in 184 of the 289 non-draft genes in the pham.

Genes that call this "Most Annotated" start:

- Ablatia_214, Ading_216, Adlitam_214, Alice_202, Amataga_216, ArcherS7_215, Asterius_217, Astraea_209, Atlantean_215, Audrick_217, Ava3_214, Babyland_218, BackyardAgain_211, BadAgartude_209, BananaFence_212, Bangla1971_215, Basquiat_212, BeanWater_207, Belieber_208, Bezza_204, BigCity_224, Bigswole_220, Bipolarisk_213, Blackbrain_212, Blackdragon_210, Blubba_204, BobaPhatt_207, Bonray_217, Bowman_213, Bread_210, Breeniome_214, Burrough_217, Bxz1_205, Cactojaque_210, Cali_208, Cane17_206, Capablanca_220, Caravan_206, Catera_207, Chargie21_212, CharlieB_209, ChaylaJr_213, ChickenPhender_211, Chomp_215, CindyLou_216, Cleatunium_208, Colt_206, Concombre_220, DTDevon_217, Daffodil_220, Dandelion_223, Darko_214, DeejaClivia_203, Delilah_213, Delylah_217, Demodog_221, Derek_212, Dessert_213, Dietrick_204, DirtMonster_208, Domi_209, DrPhinkDaddy_212, Drazdys_213, Duckfeet_209, ET08_203, EasyJones_218, EgglyFarm_224, EmToTheThree_215, EmmaElysia_219, Erdmann_216, ErnieJ_208, Essence_212, Ewok_214, Fixie_215, Flabslab_210, Fludd_215, Fongie_216, FoxtrotP1_213, FrayBell_218, FudgeTart_210, Gabriel_218, Gangam_216, Ghost_215, Gizmo_221, GlutenPhree_216, Grasshills_223, Grungle_199, Guwapp_210, Halldule_208, HyRo_203, I3_225, IkeLoa_207, InigoMontoya_218, InterFolia_218, Iota_210, Issimir_208, Izajani_213, JPickles_211, Janiyra_218, JayJay_217, Jaygup_211, Jedediah_215, Jemmno_214, Jessibeth14_215, Jezreel_212, JigglyPuff_222, JulietS_206, JustHall_209, Kamryn_214, Kboogie_219, Khaleesi_214, Koguma_214, Kudefre_85, LRRHood_208, Labradorite_213, Latch_215, Lee7_215, Lethe_215, LifeSavor_214, LinStu_214, Littleton_218, Loanshark_212, LolaVinca_213, LookingGlass_214, LordLeafolot_216, Lukilu_206, Lunareta_213, Maby2021_215, Mangeria_216, Matsumoto_213, Maturis_212, McGee_214, McWolfish_212, Megamind_212, Melpomini_210, MikeLiesIn_217, Mikro_211, MoMoMixon_213, Moby_211, Moiqah_210, Momo_216, Montpel_213, Morizzled23_212, Naija_216, Napoleon13_212, Nappy_216, Naval22_220, NedWong_214, Ngannou_212, Nidhogg_216, NoodleTree_221, Norm_215, NuevoMundo_218, Octobien14_83, OrediggerDelux_211, ParkTD_214, Patter_216, PharkleMinkus_217, Phlegm_219, Phox_216, Phusco_213, Pier_216, Pinkcreek_199, Pio_223, Pivoine_216, Pleione_219, Primadonna_210, Pupusa_219, PurduePete_215, QBert_207, Quasimodo_217, Rabinovish_208, Rahel_216, Rizal_207, RoMag_210, Rocha_212,

Ronan_211, Roots515_217, SVoro_211, Salacia_215, Sauce_211, ScottMcG_209, Sebata_216, Sephiroth_83, Shaqnato_206, Shelob_216, ShiaLabeouf_212, Shifa_192, Shnickers_213, Shrimp_217, SilverDipper_219, SmallFry_215, SoilZilla_210, Spec_210, Specks_219, Sprinklers_213, Spud_209, SrishMeg2525_212, StephanieG_211, StubbySaigey_220, Stubby_199, Substance289_212, Syleon_86, Tainan_216, Teardrop_212, TinyTim_213, Tonenili_237, Tortoise16_213, Trinitium_211, Turret_208, Tyke_213, ValleyTerrace_216, Vortrix_235, Wally_213, Willis_216, Yassified_212, YemiJoy2021_216, YoungMoneyMata_214, Yucca_215, Zalkecks_214, Zeenon_217, ZygoTaiga_212,

Genes that have the "Most Annotated" start but do not call it:

-

Genes that do not have the "Most Annotated" start:

- AbbyDaisy_88, Abidatro_44, AdaS_81, AdoptaAdorbs_44, Aikyam_84, AlexMinion_47, Altostratus_63, Amanises_45, AmiCi24_44, Amphitrite_45, Andrew_46, Anekin_86, Antrice_46, Atlantica_45, Auxilium_84, Azaz_46, Babushka_42, Basilisk_42, BasketStar_86, Bauer_82, BellaJr_82, BenchScraper_86, Bhageatrice_90, BillyTP_87, BlackSpider_74, BlueShadow_84, BrayBeast_62, Brynnie_41, Camara_45, Cassini_82, Caterpie_69, Catfish_57, Chickaboom_44, Chicken_42, CookieBear_84, CosmicBrownie_85, Crescenzo_87, Cygnet_45, DanHam62_45, DarwinJr_89, DelaGarza_42, Ding_88, DinoDaryn_57, Eesa_42, EvePickles_87, Faja_87, Fingolfin_45, Fregley_61, GUPitcher_62, Galaxy_41, Gingerbug_41, Globfish_85, Glotell_46, Goib_58, Gorpy_83, GramZayde_45, Gravel_52, GumGum_93, HamCheese_45, Hestia_80, Hillester_90, Huffy_57, Isolde_87, JakeTheSnake_89, Jamun_42, JeanClaude_61, JellyBread_82, Juno112_44, KHumphrey_45, Kabloowy_86, KendraB23_53, Khuang_63, Kuleana_45, Kumotta_70, Laphuphu24k_44, Lasker_88, Lawnathon_89, LeBruni_87, Leona_44, Lesiram_43, LilJank_79, LittleTokyo_43, MUWow_88, Mapleville_79, MargaretKali_66, MaterMagnus_86, MichelleMyBell_49, MidnightRain_92, MurphyJoseph_84, Neville_76, NewKitty_87, Niblet_42, NoSwimming_54, Nyilah_93, Oppalora_44, Pelletreau_52, Persistence_79, PhluffyCoco_45, Phrank15_92, Pigu_64, Purky_56, RadFad_91, Raphaella_86, Raqqa_86, Rattail_45, RedFox_45, Renna12_44, Richie_89, Rooter_70, Ruchi_41, Sakai_82, Sarge_59, Satrap_85, Scotia_53, Seahorse_92, Sejanus_66, Shen_42, Shoya_62, Shukran_82, SonDevVon_93, SpicyFrank_87, Splinter_57, Sporco_87, Squiddly_91, StuartMinion_37, Sweetums_44, TZGordon_58, TaylorSipht_43, Teng_45, ThayneTheZag_91, Tiff81_81, Toad24_45, Trax_79, Vendetta_57, Vopal_87, Vulpecula_41, Westrich_51, WileyE_44, Windest_90, Wrackline_56, Xavia_55, YoungHarleezy_87, Zhuangyuan_47, Zixiang_42, Zucker_84,

Summary by start number:

Start 22:

- Found in 1 of 367 (0.3%) of genes in pham
- Manual Annotations of this start: 1 of 289
- Called 100.0% of time when present
- Phage (with cluster) where this start called: Catfish_57 (CU5),

Start 35:

- Found in 3 of 367 (0.8%) of genes in pham
- Manual Annotations of this start: 2 of 289

- Called 66.7% of time when present
- Phage (with cluster) where this start called: Purky_56 (P6), Sejanus_66 (AD),

Start 36:

- Found in 3 of 367 (0.8%) of genes in pham
- Manual Annotations of this start: 2 of 289
- Called 66.7% of time when present
- Phage (with cluster) where this start called: MichelleMyBell_49 (N), Xavia_55 (P3),

Start 38:

- Found in 5 of 367 (1.4%) of genes in pham
- Manual Annotations of this start: 5 of 289
- Called 100.0% of time when present
- Phage (with cluster) where this start called: DinoDaryn_57 (CU1), Huffy_57 (CU1), Splinter_57 (CU1), TZGordon_58 (CU1), Vendetta_57 (CU1),

Start 40:

- Found in 1 of 367 (0.3%) of genes in pham
- No Manual Annotations of this start.
- Called 100.0% of time when present
- Phage (with cluster) where this start called: Pigu_64 (FB),

Start 46:

- Found in 3 of 367 (0.8%) of genes in pham
- Manual Annotations of this start: 1 of 289
- Called 33.3% of time when present
- Phage (with cluster) where this start called: Goib_58 (CU1),

Start 48:

- Found in 57 of 367 (15.5%) of genes in pham
- Manual Annotations of this start: 39 of 289
- Called 84.2% of time when present
- Phage (with cluster) where this start called: Abidatro_44 (AS1), AdoptaAdorbs_44 (AS3), AlexMinion_47 (AS3), Amanises_45 (AS1), AmiCi24_44 (AS3), Amphitrite_45 (AS3), Andrew_46 (AS3), Antrice_46 (AS2), Atlantica_45 (AS3), Azaz_46 (AS3), Babushka_42 (AS3), Basilisk_42 (AS1), BrayBeast_62 (FB), Brynnie_41 (AS1), Chickaboom_44 (AS1), Chicken_42 (AS1), Cygnet_45 (AS2), DanHam62_45 (AS3), Eesa_42 (AS1), Fingolfin_45 (AS3), Galaxy_41 (AS1), Glotell_46 (AS3), Gravel_52 (AS1), HamCheese_45 (AS3), Jamun_42 (AS1), JeanClaude_61 (FB), Juno112_44 (AS3), KendraB23_53 (AS1), Kuleana_45 (AS2), Leona_44 (AS3), LittleTokyo_43 (AS2), Niblet_42 (AS1), Pelletreau_52 (AS1), PhluffyCoco_45 (AS3), RedFox_45 (AS3), Renna12_44 (AS3), Ruchi_41 (AS1), Sarge_59 (FB), Shen_42 (AS1), Shoya_62 (FB), StuartMinion_37 (AS3), TaylorSipht_43 (AS1), Toad24_45 (AS1), Vulpecula_41 (AS1), Westrich_51 (AS1), WileyE_44 (AS1), Zhuangyuan_47 (AS2), Zixiang_42 (AS1),

Start 49:

- Found in 54 of 367 (14.7%) of genes in pham
- Manual Annotations of this start: 37 of 289
- Called 94.4% of time when present
- Phage (with cluster) where this start called: AdaS_81 (AY), Aikyam_84 (AY), Anekin_86 (AY), Auxilium_84 (AY), BasketStar_86 (AY), BenchScraper_86 (AY), Bhageatrice_90 (AY), BillyTP_87 (AY), BlackSpider_74 (FN), BlueShadow_84 (AY),

Cassini_82 (FN), CookieBear_84 (AY), CosmicBrownie_85 (AY), Crescenzo_87 (AY), DarwinJr_89 (AY), EvePickles_87 (AY), Faja_87 (AY), Fregley_61 (EG), Globfish_85 (AY), Gorpy_83 (AY), GumGum_93 (AY), Hestia_80 (AY), Hillester_90 (AY), Isolde_87 (AY), JellyBread_82 (AY), Kabloowy_86 (AY), Lasker_88 (AY), Lawnathon_89 (AY), LeBruni_87 (AY), MUWow_88 (AY), Mapleville_79 (AY), MaterMagnus_86 (AY), MidnightRain_92 (AY), MurphyJoseph_84 (AY), NewKitty_87 (AY), Nyilah_93 (AY), Phrank15_92 (AY), RadFad_91 (AY), Raphaella_86 (AY), Richie_89 (AY), Rooter_70 (FB), Sakai_82 (AY), Seahorse_92 (AY), SonDevVon_93 (AY), SpicyFrank_87 (AY), Sporco_87 (AY), Squiddly_91 (DN2), Tiff81_81 (AY), Vopal_87 (AY), Windest_90 (AY), YoungHarleezy_87 (AY),

Start 50:

- Found in 12 of 367 (3.3%) of genes in pham
- Manual Annotations of this start: 4 of 289
- Called 66.7% of time when present
- Phage (with cluster) where this start called: Altostratus_63 (FS), Ding_88 (AY), JakeTheSnake_89 (AY), Khuang_63 (FS), NoSwimming_54 (FO), Persistence_79 (AY), Scotia_53 (FO), Shukran_82 (AY),

Start 51:

- Found in 6 of 367 (1.6%) of genes in pham
- Manual Annotations of this start: 4 of 289
- Called 100.0% of time when present
- Phage (with cluster) where this start called: AbbyDaisy_88 (AY), Bauer_82 (FN), BellaJr_82 (FN), Raqqa_86 (AY), ThayneTheZag_91 (AY), Zucker_84 (FN),

Start 52:

- Found in 3 of 367 (0.8%) of genes in pham
- Manual Annotations of this start: 2 of 289
- Called 66.7% of time when present
- Phage (with cluster) where this start called: Neville_76 (DU2), Trax_79 (DU2),

Start 53:

- Found in 222 of 367 (60.5%) of genes in pham
- Manual Annotations of this start: 184 of 289
- Called 100.0% of time when present
- Phage (with cluster) where this start called: Ablatia_214 (C1), Ading_216 (C1), Adlitam_214 (C1), Alice_202 (C1), Amataga_216 (C1), ArcherS7_215 (C1), Asterius_217 (C1), Astraea_209 (C1), Atlantean_215 (C1), Audrick_217 (C1), Ava3_214 (C1), Babyland_218 (C1), BackyardAgain_211 (C1), BadAgartude_209 (C1), BananaFence_212 (C1), Bangla1971_215 (C1), Basquiat_212 (C1), BeanWater_207 (C1), Belieber_208 (C1), Bezza_204 (C1), BigCity_224 (C1), Bigswole_220 (C1), Bipolarisk_213 (C1), Blackbrain_212 (C1), Blackdragon_210 (C1), Blubba_204 (C1), BobaPhatt_207 (C1), Bonray_217 (C1), Bowman_213 (C1), Bread_210 (C1), Breeniome_214 (C1), Burrough_217 (C1), Bxz1_205 (C1), Cactojaque_210 (C1), Cali_208 (C1), Cane17_206 (C1), Capablanca_220 (C1), Caravan_206 (C1), Catera_207 (C1), Chargie21_212 (C1), CharlieB_209 (C1), ChaylaJr_213 (C1), ChickenPhender_211 (C1), Chomp_215 (C1), CindyLou_216 (C1), Cleatunium_208 (C1), Colt_206 (C1), Concombre_220 (C1), DTDevon_217 (C1), Daffodil_220 (C1), Dandelion_223 (C1), Darko_214 (C1), DeejaClivia_203 (C1), Delilah_213 (C1), Delylah_217 (C1), Demodog_221 (C1), Derek_212 (C1), Dessert_213 (C1), Dietrick_204 (C1), DirtMonster_208 (C1), Domi_209 (C1), DrPhinkDaddy_212 (C1), Drazdys_213 (C1), Duckfeet_209 (C1), ET08_203 (C1),

EasyJones_218 (C1), EggyFarm_224 (C1), EmToTheThree_215 (C1), EmmaElysia_219 (C1), Erdmann_216 (C1), ErnieJ_208 (C1), Essence_212 (C1), Ewok_214 (C1), Fixie_215 (C1), Flabslab_210 (C1), Fludd_215 (C1), Fongie_216 (C1), FoxtrotP1_213 (C1), FrayBell_218 (C1), FudgeTart_210 (C1), Gabriel_218 (C1), Gamgam_216 (C1), Ghost_215 (C1), Gizmo_221 (C1), GlutenPhree_216 (C1), Grasshills_223 (C1), Grungle_199 (C1), Guwapp_210 (C1), Halldule_208 (C1), HyRo_203 (C1), I3_225 (C1), IkeLoa_207 (C1), InigoMontoya_218 (C1), InterFolia_218 (C1), Iota_210 (C1), Issimir_208 (C1), Izajani_213 (C1), JPickles_211 (C1), Janiyra_218 (C1), JayJay_217 (C1), Jaygup_211 (C1), Jedediah_215 (C1), Jemmno_214 (C1), Jessibeth14_215 (C1), Jezreel_212 (C1), JigglyPuff_222 (C1), JulietS_206 (C1), JustHall_209 (C1), Kamryn_214 (C1), Kboogie_219 (C1), Khaleesi_214 (C1), Koguma_214 (C1), Kudrefre_85 (DU1), LRRHood_208 (C1), Labradorite_213 (C1), Latch_215 (C1), Lee7_215 (C1), Lethe_215 (C1), LifeSavor_214 (C1), LinStu_214 (C1), Littleton_218 (C1), Loanshark_212 (C1), LolaVince_213 (C1), LookingGlass_214 (C1), LordLeafot_216 (C1), Lukilu_206 (C1), Lunareta_213 (C1), Maby2021_215 (C1), Mangeria_216 (C1), Matsumoto_213 (C1), Maturis_212 (C1), McGee_214 (C1), McWolfish_212 (C1), Megamind_212 (C1), Melpomini_210 (C1), MikeLiesIn_217 (C1), Mikro_211 (C1), MoMoMixon_213 (C1), Moby_211 (C1), Moiqah_210 (C1), Momo_216 (C1), Montpel_213 (C1), Morizzled23_212 (C1), Naija_216 (C1), Napoleon13_212 (C1), Nappy_216 (C1), Naval22_220 (C1), NedWong_214 (C1), Ngannou_212 (C1), Nidhogg_216 (C1), NoodleTree_221 (C1), Norm_215 (C1), NuevoMundo_218 (C1), Octobien14_83 (DU1), OrediggerDelux_211 (C1), ParkTD_214 (C1), Patter_216 (C1), PharkleMinkus_217 (C1), Phlegm_219 (C1), Phox_216 (C1), Phusco_213 (C1), Pier_216 (C1), Pinkcreek_199 (C1), Pio_223 (C1), Pivoine_216 (C1), Pleione_219 (C1), Primadonna_210 (C1), Pupusa_219 (C1), PurduePete_215 (C1), QBert_207 (C1), Quasimodo_217 (C1), Rabinovish_208 (C1), Rahel_216 (C1), Rizal_207 (C1), RoMag_210 (C1), Rocha_212 (C1), Ronan_211 (C1), Roots515_217 (C1), SVoro_211 (C1), Salacia_215 (C1), Sauce_211 (C1), ScottMcG_209 (C1), Sebata_216 (C1), Sephiroth_83 (DU1), Shaqnato_206 (C1), Shelob_216 (C1), ShiaLabeouf_212 (C1), Shifa_192 (C1), Shnickers_213 (C1), Shrimp_217 (C1), SilverDipper_219 (C1), SmallFry_215 (C1), SoilZilla_210 (C1), Spec_210 (C1), Specks_219 (C1), Sprinklers_213 (C1), Spud_209 (C1), SrishMeg2525_212 (C1), StephanieG_211 (C1), StubbySaigey_220 (C1), Stubby_199 (C1), Substance289_212 (C1), Syleon_86 (DU1), Tainan_216 (C1), Teardrop_212 (C1), TinyTim_213 (C1), Tonerili_237 (C1), Tortoise16_213 (C1), Trinitium_211 (C1), Turret_208 (C1), Tyke_213 (C1), ValleyTerrace_216 (C1), Vortrix_235 (C1), Wally_213 (C1), Willis_216 (C1), Yassified_212 (C1), YemiJoy2021_216 (C1), YoungMoneyMata_214 (C1), Yucca_215 (C1), Zalkecks_214 (C1), Zeenon_217 (C1), ZygoTaiga_212 (C1),

Start 54:

- Found in 7 of 367 (1.9%) of genes in pham
- Manual Annotations of this start: 5 of 289
- Called 100.0% of time when present
- Phage (with cluster) where this start called: DelaGarza_42 (GF), GUPitcher_62 (FJ), Gingerbug_41 (GF), Lesiram_43 (GF), Sweetums_44 (GF), Teng_45 (GF), Wrackline_56 (GF),

Start 56:

- Found in 52 of 367 (14.2%) of genes in pham
- Manual Annotations of this start: 2 of 289
- Called 5.8% of time when present

- Phage (with cluster) where this start called: Kumotta_70 (FB), MargaretKali_66 (FB), Satrap_85 (AY),

Start 59:

- Found in 3 of 367 (0.8%) of genes in pham
- No Manual Annotations of this start.
- Called 33.3% of time when present
- Phage (with cluster) where this start called: LilJank_79 (DU2),

Start 63:

- Found in 48 of 367 (13.1%) of genes in pham
- Manual Annotations of this start: 1 of 289
- Called 10.4% of time when present
- Phage (with cluster) where this start called: Camara_45 (AS3), KHumphrey_45 (AS3), Laphuphu24k_44 (AS3), Oppalora_44 (AS3), Rattail_45 (AS3),

Start 68:

- Found in 3 of 367 (0.8%) of genes in pham
- No Manual Annotations of this start.
- Called 33.3% of time when present
- Phage (with cluster) where this start called: Caterpie_69 (AD),

Start 81:

- Found in 15 of 367 (4.1%) of genes in pham
- No Manual Annotations of this start.
- Called 6.7% of time when present
- Phage (with cluster) where this start called: GramZayde_45 (AS2),

Summary by clusters:

There are 21 clusters represented in this pham: AS3, AS2, AS1, FS, P6, AD, CU1, P3, FJ, EG, CU5, N, GF, FB, DN2, AY, DU1, C1, DU2, FN, FO,

Info for manual annotations of cluster AD:

- Start number 35 was manually annotated 1 time for cluster AD.

Info for manual annotations of cluster AS1:

- Start number 48 was manually annotated 16 times for cluster AS1.

Info for manual annotations of cluster AS2:

- Start number 48 was manually annotated 5 times for cluster AS2.

Info for manual annotations of cluster AS3:

- Start number 48 was manually annotated 15 times for cluster AS3.
- Start number 63 was manually annotated 1 time for cluster AS3.

Info for manual annotations of cluster AY:

- Start number 49 was manually annotated 34 times for cluster AY.
- Start number 50 was manually annotated 1 time for cluster AY.
- Start number 51 was manually annotated 2 times for cluster AY.

Info for manual annotations of cluster C1:

- Start number 53 was manually annotated 180 times for cluster C1.

Info for manual annotations of cluster CU1:

- Start number 38 was manually annotated 5 times for cluster CU1.
- Start number 46 was manually annotated 1 time for cluster CU1.

Info for manual annotations of cluster CU5:

- Start number 22 was manually annotated 1 time for cluster CU5.

Info for manual annotations of cluster DN2:

- Start number 49 was manually annotated 1 time for cluster DN2.

Info for manual annotations of cluster DU1:

- Start number 53 was manually annotated 4 times for cluster DU1.

Info for manual annotations of cluster DU2:

- Start number 52 was manually annotated 2 times for cluster DU2.

Info for manual annotations of cluster EG:

- Start number 49 was manually annotated 1 time for cluster EG.

Info for manual annotations of cluster FB:

- Start number 48 was manually annotated 3 times for cluster FB.
- Start number 56 was manually annotated 2 times for cluster FB.

Info for manual annotations of cluster FN:

- Start number 49 was manually annotated 1 time for cluster FN.
- Start number 51 was manually annotated 2 times for cluster FN.

Info for manual annotations of cluster FO:

- Start number 50 was manually annotated 2 times for cluster FO.

Info for manual annotations of cluster FS:

- Start number 50 was manually annotated 1 time for cluster FS.

Info for manual annotations of cluster GF:

- Start number 54 was manually annotated 5 times for cluster GF.

Info for manual annotations of cluster N:

- Start number 36 was manually annotated 1 time for cluster N.

Info for manual annotations of cluster P3:

- Start number 36 was manually annotated 1 time for cluster P3.

Info for manual annotations of cluster P6:

- Start number 35 was manually annotated 1 time for cluster P6.

Gene Information:

Gene: AbbyDaisy_88 Start: 50419, Stop: 50823, Start Num: 51

Candidate Starts for AbbyDaisy_88:

(44, 50407), (Start: 51 @50419 has 4 MA's), (67, 50476), (74, 50500), (101, 50590), (104, 50596), (129, 50692), (141, 50743), (154, 50788),

Gene: Abidatro_44 Start: 29002, Stop: 29472, Start Num: 48

Candidate Starts for Abidatro_44:

(Start: 48 @29002 has 39 MA's), (Start: 63 @29038 has 1 MA's), (64, 29044), (79, 29095), (90, 29140), (107, 29200), (112, 29218), (117, 29254), (138, 29353), (147, 29395), (155, 29434), (157, 29440), (164, 29461),

Gene: Ablatia_214 Start: 119512, Stop: 119967, Start Num: 53

Candidate Starts for Ablatia_214:

(21, 119398), (29, 119461), (34, 119479), (Start: 53 @119512 has 184 MA's), (62, 119530), (91, 119662), (96, 119680), (112, 119740), (137, 119848), (141, 119872), (157, 119935), (159, 119941),

Gene: AdaS_81 Start: 45341, Stop: 45766, Start Num: 49

Candidate Starts for AdaS_81:

(19, 45236), (Start: 49 @45341 has 37 MA's), (Start: 56 @45353 has 2 MA's), (62, 45368), (66, 45398), (67, 45404), (74, 45428), (119, 45596), (126, 45608), (135, 45653),

Gene: Ading_216 Start: 121132, Stop: 121587, Start Num: 53

Candidate Starts for Ading_216:

(21, 121018), (29, 121081), (34, 121099), (Start: 53 @121132 has 184 MA's), (62, 121150), (91, 121282), (96, 121300), (112, 121360), (137, 121468), (141, 121492), (157, 121555), (159, 121561),

Gene: Adlitam_214 Start: 119736, Stop: 120191, Start Num: 53

Candidate Starts for Adlitam_214:

(21, 119622), (29, 119685), (34, 119703), (Start: 53 @119736 has 184 MA's), (62, 119754), (91, 119886), (96, 119904), (112, 119964), (137, 120072), (141, 120096), (157, 120159), (159, 120165),

Gene: AdoptaAdorbs_44 Start: 28239, Stop: 28709, Start Num: 48

Candidate Starts for AdoptaAdorbs_44:

(Start: 48 @28239 has 39 MA's), (Start: 63 @28275 has 1 MA's), (84, 28356), (90, 28380), (96, 28404), (105, 28428), (107, 28440), (109, 28449), (112, 28458), (117, 28494), (125, 28530), (128, 28542), (131, 28563), (133, 28575), (142, 28617), (153, 28665), (156, 28674),

Gene: Aikyam_84 Start: 46399, Stop: 46830, Start Num: 49

Candidate Starts for Aikyam_84:

(19, 46294), (Start: 49 @46399 has 37 MA's), (Start: 56 @46411 has 2 MA's), (62, 46426), (66, 46456), (67, 46462), (74, 46486), (154, 46789),

Gene: AlexMinion_47 Start: 28495, Stop: 28965, Start Num: 48

Candidate Starts for AlexMinion_47:

(Start: 48 @28495 has 39 MA's), (Start: 63 @28531 has 1 MA's), (90, 28636), (96, 28660), (107, 28696), (109, 28705), (112, 28714), (125, 28786), (128, 28798), (131, 28819), (133, 28831), (142, 28873), (153, 28921), (156, 28930),

Gene: Alice_202 Start: 118711, Stop: 119166, Start Num: 53

Candidate Starts for Alice_202:

(21, 118597), (29, 118660), (34, 118678), (Start: 53 @118711 has 184 MA's), (62, 118729), (91, 118861), (96, 118879), (112, 118939), (137, 119047), (141, 119071), (157, 119134), (159, 119140),

Gene: Altostratus_63 Start: 36693, Stop: 37115, Start Num: 50

Candidate Starts for Altostratus_63:

(Start: 50 @36693 has 4 MA's), (80, 36783), (83, 36789), (104, 36867), (138, 37005),

Gene: Amanises_45 Start: 29930, Stop: 30397, Start Num: 48

Candidate Starts for Amanises_45:

(Start: 48 @29930 has 39 MA's), (Start: 63 @29966 has 1 MA's), (81, 30026), (96, 30092), (107, 30128), (112, 30146), (123, 30206), (138, 30278), (141, 30302), (143, 30308), (155, 30359), (162, 30380), (164, 30386),

Gene: Amataga_216 Start: 119548, Stop: 120003, Start Num: 53

Candidate Starts for Amataga_216:

(21, 119434), (29, 119497), (34, 119515), (Start: 53 @119548 has 184 MA's), (62, 119566), (91, 119698), (96, 119716), (112, 119776), (137, 119884), (141, 119908), (157, 119971), (159, 119977),

Gene: AmiCi24_44 Start: 28339, Stop: 28809, Start Num: 48

Candidate Starts for AmiCi24_44:

(Start: 48 @28339 has 39 MA's), (Start: 63 @28375 has 1 MA's), (84, 28456), (90, 28480), (96, 28504), (105, 28528), (107, 28540), (109, 28549), (112, 28558), (117, 28594), (125, 28630), (128, 28642), (131, 28663), (133, 28675), (142, 28717), (153, 28765), (156, 28774),

Gene: Amphitrite_45 Start: 28238, Stop: 28708, Start Num: 48

Candidate Starts for Amphitrite_45:

(Start: 48 @28238 has 39 MA's), (Start: 63 @28274 has 1 MA's), (84, 28355), (90, 28379), (96, 28403), (107, 28439), (109, 28448), (112, 28457), (117, 28493), (125, 28529), (128, 28541), (131, 28562), (133, 28574), (142, 28616), (153, 28664), (156, 28673),

Gene: Andrew_46 Start: 28224, Stop: 28688, Start Num: 48

Candidate Starts for Andrew_46:

(Start: 48 @28224 has 39 MA's), (81, 28320), (90, 28365), (107, 28425), (128, 28524), (131, 28545), (138, 28572), (153, 28647), (156, 28656), (160, 28668),

Gene: Anekin_86 Start: 48622, Stop: 49053, Start Num: 49

Candidate Starts for Anekin_86:

(19, 48517), (Start: 49 @48622 has 37 MA's), (Start: 56 @48634 has 2 MA's), (62, 48649), (66, 48679), (67, 48685), (74, 48709), (154, 49012),

Gene: Antrice_46 Start: 28458, Stop: 28919, Start Num: 48

Candidate Starts for Antrice_46:

(Start: 48 @28458 has 39 MA's), (Start: 63 @28494 has 1 MA's), (64, 28500), (90, 28599), (92, 28608), (96, 28623), (108, 28671), (128, 28764), (131, 28785), (140, 28833), (141, 28836), (143, 28842), (160, 28908),

Gene: ArcherS7_215 Start: 120590, Stop: 121045, Start Num: 53

Candidate Starts for ArcherS7_215:

(21, 120476), (29, 120539), (34, 120557), (Start: 53 @120590 has 184 MA's), (62, 120608), (91, 120740), (96, 120758), (112, 120818), (137, 120926), (141, 120950), (157, 121013), (159, 121019),

Gene: Asterius_217 Start: 119957, Stop: 120412, Start Num: 53

Candidate Starts for Asterius_217:

(21, 119843), (29, 119906), (34, 119924), (Start: 53 @119957 has 184 MA's), (62, 119975), (91, 120107), (96, 120125), (112, 120185), (137, 120293), (141, 120317), (157, 120380), (159, 120386),

Gene: Astraea_209 Start: 119152, Stop: 119607, Start Num: 53

Candidate Starts for Astraea_209:

(21, 119038), (29, 119101), (34, 119119), (Start: 53 @119152 has 184 MA's), (62, 119170), (91, 119302), (96, 119320), (112, 119380), (137, 119488), (141, 119512), (157, 119575), (159, 119581),

Gene: Atlantean_215 Start: 119548, Stop: 120003, Start Num: 53

Candidate Starts for Atlantean_215:

(21, 119434), (29, 119497), (34, 119515), (Start: 53 @119548 has 184 MA's), (62, 119566), (91, 119698), (96, 119716), (112, 119776), (137, 119884), (141, 119908), (157, 119971), (159, 119977),

Gene: Atlantica_45 Start: 28341, Stop: 28811, Start Num: 48

Candidate Starts for Atlantica_45:

(Start: 48 @28341 has 39 MA's), (Start: 63 @28377 has 1 MA's), (84, 28458), (90, 28482), (96, 28506), (105, 28530), (107, 28542), (109, 28551), (112, 28560), (117, 28596), (125, 28632), (128, 28644), (131, 28665), (133, 28677), (142, 28719), (153, 28767), (156, 28776),

Gene: Audrick_217 Start: 119438, Stop: 119893, Start Num: 53

Candidate Starts for Audrick_217:

(21, 119324), (29, 119387), (34, 119405), (Start: 53 @119438 has 184 MA's), (62, 119456), (91, 119588), (96, 119606), (112, 119666), (137, 119774), (141, 119798), (157, 119861), (159, 119867),

Gene: Auxilium_84 Start: 46039, Stop: 46461, Start Num: 49

Candidate Starts for Auxilium_84:

(Start: 49 @46039 has 37 MA's), (Start: 56 @46048 has 2 MA's), (62, 46063), (66, 46093), (67, 46099), (74, 46123), (154, 46426),

Gene: Ava3_214 Start: 119982, Stop: 120437, Start Num: 53

Candidate Starts for Ava3_214:

(21, 119868), (29, 119931), (34, 119949), (Start: 53 @119982 has 184 MA's), (62, 120000), (91, 120132), (96, 120150), (112, 120210), (137, 120318), (141, 120342), (157, 120405), (159, 120411),

Gene: Azaz_46 Start: 28419, Stop: 28889, Start Num: 48

Candidate Starts for Azaz_46:

(Start: 48 @28419 has 39 MA's), (Start: 63 @28455 has 1 MA's), (90, 28560), (96, 28584), (105, 28608), (107, 28620), (109, 28629), (112, 28638), (117, 28674), (125, 28710), (128, 28722), (131, 28743), (133, 28755), (142, 28797), (153, 28845), (156, 28854),

Gene: Babushka_42 Start: 28169, Stop: 28636, Start Num: 48

Candidate Starts for Babushka_42:

(Start: 48 @28169 has 39 MA's), (84, 28286), (90, 28310), (96, 28334), (102, 28352), (106, 28364), (107, 28370), (109, 28379), (112, 28388), (128, 28469), (131, 28490), (133, 28502), (135, 28508), (141, 28541), (142, 28544), (153, 28592), (155, 28598),

Gene: Babyland_218 Start: 120325, Stop: 120780, Start Num: 53

Candidate Starts for Babyland_218:

(21, 120211), (29, 120274), (34, 120292), (Start: 53 @120325 has 184 MA's), (62, 120343), (91, 120475), (96, 120493), (112, 120553), (137, 120661), (141, 120685), (157, 120748), (159, 120754),

Gene: BackyardAgain_211 Start: 117513, Stop: 117968, Start Num: 53

Candidate Starts for BackyardAgain_211:

(21, 117399), (29, 117462), (34, 117480), (Start: 53 @117513 has 184 MA's), (62, 117531), (91, 117663), (96, 117681), (112, 117741), (137, 117849), (141, 117873), (157, 117936), (159, 117942),

Gene: BadAgartude_209 Start: 119650, Stop: 120105, Start Num: 53

Candidate Starts for BadAgartude_209:

(21, 119536), (29, 119599), (34, 119617), (Start: 53 @119650 has 184 MA's), (62, 119668), (91, 119800), (96, 119818), (112, 119878), (137, 119986), (141, 120010), (157, 120073), (159, 120079),

Gene: BananaFence_212 Start: 119781, Stop: 120236, Start Num: 53

Candidate Starts for BananaFence_212:

(21, 119667), (29, 119730), (34, 119748), (Start: 53 @119781 has 184 MA's), (62, 119799), (91, 119931), (96, 119949), (112, 120009), (137, 120117), (141, 120141), (157, 120204), (159, 120210),

Gene: Bangla1971_215 Start: 119554, Stop: 120009, Start Num: 53

Candidate Starts for Bangla1971_215:

(21, 119440), (29, 119503), (34, 119521), (Start: 53 @119554 has 184 MA's), (62, 119572), (91, 119704), (96, 119722), (112, 119782), (137, 119890), (141, 119914), (157, 119977), (159, 119983),

Gene: Basilisk_42 Start: 28172, Stop: 28642, Start Num: 48

Candidate Starts for Basilisk_42:

(Start: 48 @28172 has 39 MA's), (Start: 63 @28208 has 1 MA's), (64, 28214), (81, 28268), (90, 28310), (95, 28331), (100, 28349), (107, 28370), (112, 28388), (117, 28424), (138, 28523), (141, 28547), (147, 28565), (157, 28610), (164, 28631),

Gene: BasketStar_86 Start: 48582, Stop: 49007, Start Num: 49

Candidate Starts for BasketStar_86:

(33, 48552), (Start: 49 @48582 has 37 MA's), (Start: 56 @48594 has 2 MA's), (62, 48609), (66, 48639), (67, 48645), (74, 48669), (88, 48717), (101, 48759), (116, 48828), (154, 48972),

Gene: Basquiat_212 Start: 118067, Stop: 118522, Start Num: 53

Candidate Starts for Basquiat_212:

(21, 117953), (29, 118016), (34, 118034), (Start: 53 @118067 has 184 MA's), (62, 118085), (91, 118217), (96, 118235), (112, 118295), (137, 118403), (141, 118427), (157, 118490), (159, 118496),

Gene: Bauer_82 Start: 45126, Stop: 45530, Start Num: 51

Candidate Starts for Bauer_82:

(Start: 36 @45099 has 2 MA's), (44, 45114), (Start: 51 @45126 has 4 MA's), (67, 45183), (74, 45207), (101, 45297), (113, 45354), (129, 45399), (141, 45450), (154, 45495),

Gene: BeanWater_207 Start: 118593, Stop: 119048, Start Num: 53

Candidate Starts for BeanWater_207:

(21, 118479), (29, 118542), (34, 118560), (Start: 53 @118593 has 184 MA's), (62, 118611), (91, 118743), (96, 118761), (112, 118821), (137, 118929), (141, 118953), (157, 119016), (159, 119022),

Gene: Belieber_208 Start: 117381, Stop: 117836, Start Num: 53

Candidate Starts for Belieber_208:

(21, 117267), (29, 117330), (34, 117348), (Start: 53 @117381 has 184 MA's), (62, 117399), (91, 117531), (96, 117549), (112, 117609), (137, 117717), (141, 117741), (157, 117804), (159, 117810),

Gene: BellaJr_82 Start: 47457, Stop: 47861, Start Num: 51

Candidate Starts for BellaJr_82:

(5, 47181), (8, 47202), (44, 47445), (Start: 51 @47457 has 4 MA's), (67, 47514), (73, 47532), (74, 47538), (95, 47610), (106, 47646), (129, 47730), (141, 47781), (154, 47826),

Gene: BenchScraper_86 Start: 46987, Stop: 47412, Start Num: 49

Candidate Starts for BenchScraper_86:

(33, 46957), (Start: 49 @46987 has 37 MA's), (Start: 56 @46999 has 2 MA's), (62, 47014), (66, 47044), (67, 47050), (74, 47074), (101, 47164), (154, 47377),

Gene: Bezza_204 Start: 119105, Stop: 119560, Start Num: 53

Candidate Starts for Bezza_204:

(21, 118991), (29, 119054), (34, 119072), (Start: 53 @119105 has 184 MA's), (62, 119123), (91, 119255), (96, 119273), (112, 119333), (137, 119441), (141, 119465), (157, 119528), (159, 119534),

Gene: Bhageatrice_90 Start: 51263, Stop: 51688, Start Num: 49

Candidate Starts for Bhageatrice_90:

(Start: 49 @51263 has 37 MA's), (Start: 56 @51275 has 2 MA's), (62, 51290), (66, 51320), (67, 51326), (74, 51350), (101, 51440), (154, 51653),

Gene: BigCity_224 Start: 122164, Stop: 122619, Start Num: 53

Candidate Starts for BigCity_224:

(21, 122050), (29, 122113), (34, 122131), (37, 122134), (Start: 53 @122164 has 184 MA's), (62, 122182), (91, 122314), (96, 122332), (112, 122392), (137, 122500), (141, 122524), (157, 122587), (159, 122593),

Gene: Bigswole_220 Start: 122018, Stop: 122473, Start Num: 53

Candidate Starts for Bigswole_220:

(21, 121904), (29, 121967), (34, 121985), (Start: 53 @122018 has 184 MA's), (62, 122036), (91, 122168), (96, 122186), (112, 122246), (137, 122354), (141, 122378), (157, 122441), (159, 122447),

Gene: BillyTP_87 Start: 49093, Stop: 49518, Start Num: 49

Candidate Starts for BillyTP_87:

(33, 49063), (Start: 49 @49093 has 37 MA's), (Start: 56 @49105 has 2 MA's), (62, 49120), (66, 49150), (67, 49156), (74, 49180), (101, 49270), (129, 49372), (154, 49483),

Gene: Bipolarisk_213 Start: 120251, Stop: 120706, Start Num: 53

Candidate Starts for Bipolarisk_213:

(21, 120137), (29, 120200), (34, 120218), (Start: 53 @120251 has 184 MA's), (62, 120269), (91, 120401), (96, 120419), (112, 120479), (137, 120587), (141, 120611), (157, 120674), (159, 120680),

Gene: BlackSpider_74 Start: 45516, Stop: 45926, Start Num: 49

Candidate Starts for BlackSpider_74:

(18, 45411), (47, 45513), (Start: 49 @45516 has 37 MA's), (Start: 56 @45528 has 2 MA's), (62, 45543), (66, 45573), (67, 45579), (74, 45603), (101, 45693), (104, 45699), (106, 45711), (113, 45750), (121, 45774), (127, 45786), (153, 45888), (158, 45903),

Gene: Blackbrain_212 Start: 119152, Stop: 119607, Start Num: 53

Candidate Starts for Blackbrain_212:

(21, 119038), (29, 119101), (34, 119119), (Start: 53 @119152 has 184 MA's), (62, 119170), (91, 119302), (96, 119320), (112, 119380), (137, 119488), (141, 119512), (157, 119575), (159, 119581),

Gene: Blackdragon_210 Start: 119884, Stop: 120339, Start Num: 53

Candidate Starts for Blackdragon_210:

(21, 119770), (29, 119833), (34, 119851), (Start: 53 @119884 has 184 MA's), (62, 119902), (91, 120034), (96, 120052), (112, 120112), (137, 120220), (141, 120244), (157, 120307), (159, 120313),

Gene: Blubba_204 Start: 123233, Stop: 123688, Start Num: 53

Candidate Starts for Blubba_204:

(21, 123119), (29, 123182), (34, 123200), (Start: 53 @123233 has 184 MA's), (62, 123251), (91, 123383), (96, 123401), (112, 123461), (137, 123569), (141, 123593), (157, 123656),

Gene: BlueShadow_84 Start: 48348, Stop: 48779, Start Num: 49

Candidate Starts for BlueShadow_84:

(33, 48318), (Start: 49 @48348 has 37 MA's), (Start: 56 @48360 has 2 MA's), (62, 48375), (66, 48405), (67, 48411), (74, 48435), (88, 48483), (116, 48594), (154, 48738),

Gene: BobaPhatt_207 Start: 118259, Stop: 118714, Start Num: 53

Candidate Starts for BobaPhatt_207:

(21, 118145), (29, 118208), (34, 118226), (Start: 53 @118259 has 184 MA's), (62, 118277), (91, 118409), (96, 118427), (112, 118487), (137, 118595), (141, 118619), (157, 118682), (159, 118688),

Gene: Bonray_217 Start: 121653, Stop: 122108, Start Num: 53

Candidate Starts for Bonray_217:

(21, 121539), (29, 121602), (34, 121620), (Start: 53 @121653 has 184 MA's), (62, 121671), (91, 121803), (96, 121821), (112, 121881), (137, 121989), (141, 122013), (157, 122076), (159, 122082),

Gene: Bowman_213 Start: 120759, Stop: 121214, Start Num: 53

Candidate Starts for Bowman_213:

(21, 120645), (29, 120708), (34, 120726), (Start: 53 @120759 has 184 MA's), (62, 120777), (91, 120909), (96, 120927), (112, 120987), (137, 121095), (141, 121119), (157, 121182), (159, 121188),

Gene: BrayBeast_62 Start: 35523, Stop: 35936, Start Num: 48

Candidate Starts for BrayBeast_62:

(24, 35457), (Start: 48 @35523 has 39 MA's), (83, 35619), (106, 35709), (141, 35859),

Gene: Bread_210 Start: 119651, Stop: 120106, Start Num: 53

Candidate Starts for Bread_210:

(21, 119537), (29, 119600), (34, 119618), (Start: 53 @119651 has 184 MA's), (62, 119669), (91, 119801), (96, 119819), (112, 119879), (137, 119987), (141, 120011), (157, 120074), (159, 120080),

Gene: Breeniome_214 Start: 119105, Stop: 119560, Start Num: 53

Candidate Starts for Breeniome_214:

(21, 118991), (29, 119054), (34, 119072), (Start: 53 @119105 has 184 MA's), (62, 119123), (91, 119255), (96, 119273), (112, 119333), (137, 119441), (141, 119465), (157, 119528), (159, 119534),

Gene: Brynnie_41 Start: 28050, Stop: 28520, Start Num: 48

Candidate Starts for Brynnie_41:

(Start: 48 @28050 has 39 MA's), (Start: 63 @28086 has 1 MA's), (64, 28092), (81, 28146), (90, 28188), (100, 28227), (107, 28248), (112, 28266), (117, 28302), (138, 28401), (141, 28425), (147, 28443), (157, 28488), (164, 28509),

Gene: Burrough_217 Start: 121421, Stop: 121876, Start Num: 53

Candidate Starts for Burrough_217:

(21, 121307), (29, 121370), (34, 121388), (Start: 53 @121421 has 184 MA's), (62, 121439), (91, 121571), (96, 121589), (112, 121649), (137, 121757), (141, 121781), (157, 121844), (159, 121850),

Gene: Bxz1_205 Start: 121627, Stop: 122082, Start Num: 53

Candidate Starts for Bxz1_205:

(21, 121513), (29, 121576), (34, 121594), (Start: 53 @121627 has 184 MA's), (62, 121645), (91, 121777), (96, 121795), (112, 121855), (137, 121963), (141, 121987), (157, 122050), (159, 122056),

Gene: Cactojaque_210 Start: 118087, Stop: 118542, Start Num: 53

Candidate Starts for Cactojaque_210:

(21, 117973), (29, 118036), (34, 118054), (Start: 53 @118087 has 184 MA's), (62, 118105), (91, 118237), (96, 118255), (112, 118315), (137, 118423), (141, 118447), (157, 118510), (159, 118516),

Gene: Cali_208 Start: 120034, Stop: 120489, Start Num: 53

Candidate Starts for Cali_208:

(21, 119920), (29, 119983), (34, 120001), (Start: 53 @120034 has 184 MA's), (62, 120052), (91, 120184), (96, 120202), (112, 120262), (137, 120370), (141, 120394), (157, 120457), (159, 120463),

Gene: Camara_45 Start: 28277, Stop: 28711, Start Num: 63

Candidate Starts for Camara_45:

(Start: 48 @28241 has 39 MA's), (Start: 63 @28277 has 1 MA's), (84, 28358), (90, 28382), (96, 28406), (105, 28430), (107, 28442), (109, 28451), (112, 28460), (117, 28496), (125, 28532), (128, 28544), (131, 28565), (133, 28577), (142, 28619), (153, 28667), (156, 28676),

Gene: Cane17_206 Start: 123642, Stop: 124097, Start Num: 53

Candidate Starts for Cane17_206:

(21, 123528), (29, 123591), (34, 123609), (Start: 53 @123642 has 184 MA's), (62, 123660), (91, 123792), (96, 123810), (112, 123870), (137, 123978), (141, 124002), (157, 124065),

Gene: Capablanca_220 Start: 122248, Stop: 122703, Start Num: 53

Candidate Starts for Capablanca_220:

(21, 122134), (29, 122197), (34, 122215), (Start: 53 @122248 has 184 MA's), (62, 122266), (91, 122398), (96, 122416), (112, 122476), (137, 122584), (141, 122608), (157, 122671), (159, 122677),

Gene: Caravan_206 Start: 120368, Stop: 120823, Start Num: 53

Candidate Starts for Caravan_206:

(21, 120254), (29, 120317), (34, 120335), (Start: 53 @120368 has 184 MA's), (62, 120386), (91, 120518), (96, 120536), (112, 120596), (137, 120704), (141, 120728), (157, 120791), (159, 120797),

Gene: Cassini_82 Start: 47390, Stop: 47791, Start Num: 49

Candidate Starts for Cassini_82:

(18, 47285), (Start: 49 @47390 has 37 MA's), (Start: 56 @47402 has 2 MA's), (62, 47417), (66, 47447), (67, 47453), (74, 47477), (101, 47567), (104, 47573), (106, 47585), (113, 47624), (126, 47657), (145, 47732),

Gene: Catera_207 Start: 118761, Stop: 119216, Start Num: 53

Candidate Starts for Catera_207:

(21, 118647), (29, 118710), (34, 118728), (Start: 53 @118761 has 184 MA's), (62, 118779), (91, 118911), (96, 118929), (112, 118989), (137, 119097), (141, 119121), (157, 119184), (159, 119190),

Gene: Caterpie_69 Start: 50850, Stop: 51224, Start Num: 68

Candidate Starts for Caterpie_69:

(Start: 35 @50760 has 2 MA's), (62, 50811), (68, 50850), (76, 50880), (97, 50958), (111, 51009), (133, 51108), (137, 51120), (139, 51123), (143, 51150), (155, 51201), (161, 51216),

Gene: Catfish_57 Start: 38946, Stop: 39467, Start Num: 22

Candidate Starts for Catfish_57:

(Start: 22 @38946 has 1 MA's), (23, 38952), (58, 39051), (62, 39063), (78, 39117), (109, 39234), (112, 39243), (120, 39279),

Gene: Chargie21_212 Start: 118067, Stop: 118522, Start Num: 53

Candidate Starts for Chargie21_212:

(21, 117953), (29, 118016), (34, 118034), (Start: 53 @118067 has 184 MA's), (62, 118085), (91, 118217), (96, 118235), (112, 118295), (137, 118403), (141, 118427), (157, 118490), (159, 118496),

Gene: CharlieB_209 Start: 119788, Stop: 120243, Start Num: 53

Candidate Starts for CharlieB_209:

(21, 119674), (29, 119737), (34, 119755), (Start: 53 @119788 has 184 MA's), (62, 119806), (91, 119938), (96, 119956), (112, 120016), (137, 120124), (141, 120148), (157, 120211), (159, 120217),

Gene: ChaylaJr_213 Start: 118767, Stop: 119222, Start Num: 53

Candidate Starts for ChaylaJr_213:

(21, 118653), (29, 118716), (34, 118734), (Start: 53 @118767 has 184 MA's), (62, 118785), (91, 118917), (96, 118935), (112, 118995), (137, 119103), (141, 119127), (157, 119190), (159, 119196),

Gene: Chickaboom_44 Start: 28771, Stop: 29241, Start Num: 48

Candidate Starts for Chickaboom_44:

(Start: 48 @28771 has 39 MA's), (Start: 63 @28807 has 1 MA's), (64, 28813), (90, 28909), (100, 28948), (107, 28969), (112, 28987), (117, 29023), (118, 29029), (128, 29074), (131, 29095), (141, 29146), (147, 29164), (157, 29209), (164, 29230),

Gene: Chicken_42 Start: 29231, Stop: 29698, Start Num: 48

Candidate Starts for Chicken_42:

(Start: 48 @29231 has 39 MA's), (Start: 63 @29267 has 1 MA's), (81, 29327), (107, 29429), (112, 29447), (123, 29507), (131, 29552), (138, 29579), (141, 29603), (143, 29609), (155, 29660), (164, 29687),

Gene: ChickenPhender_211 Start: 118214, Stop: 118669, Start Num: 53

Candidate Starts for ChickenPhender_211:

(21, 118100), (29, 118163), (34, 118181), (Start: 53 @118214 has 184 MA's), (62, 118232), (91, 118364), (96, 118382), (112, 118442), (137, 118550), (141, 118574), (157, 118637), (159, 118643),

Gene: Chomp_215 Start: 120837, Stop: 121292, Start Num: 53

Candidate Starts for Chomp_215:

(21, 120723), (29, 120786), (34, 120804), (Start: 53 @120837 has 184 MA's), (62, 120855), (91, 120987), (96, 121005), (112, 121065), (137, 121173), (141, 121197), (157, 121260), (159, 121266),

Gene: CindyLou_216 Start: 121097, Stop: 121552, Start Num: 53

Candidate Starts for CindyLou_216:

(21, 120983), (29, 121046), (34, 121064), (Start: 53 @121097 has 184 MA's), (62, 121115), (91, 121247), (96, 121265), (112, 121325), (137, 121433), (141, 121457), (157, 121520), (159, 121526),

Gene: Cleatunium_208 Start: 119480, Stop: 119935, Start Num: 53

Candidate Starts for Cleatunium_208:

(21, 119366), (29, 119429), (34, 119447), (Start: 53 @119480 has 184 MA's), (62, 119498), (91, 119630), (96, 119648), (112, 119708), (137, 119816), (141, 119840), (157, 119903), (159, 119909),

Gene: Colt_206 Start: 122873, Stop: 123328, Start Num: 53

Candidate Starts for Colt_206:

(21, 122759), (29, 122822), (34, 122840), (Start: 53 @122873 has 184 MA's), (62, 122891), (91, 123023), (96, 123041), (112, 123101), (137, 123209), (141, 123233), (157, 123296),

Gene: Concombres_220 Start: 121707, Stop: 122162, Start Num: 53

Candidate Starts for Concombres_220:

(21, 121593), (29, 121656), (34, 121674), (Start: 53 @121707 has 184 MA's), (62, 121725), (91, 121857), (96, 121875), (112, 121935), (137, 122043), (141, 122067), (157, 122130), (159, 122136),

Gene: CookieBear_84 Start: 47392, Stop: 47817, Start Num: 49

Candidate Starts for CookieBear_84:

(19, 47287), (Start: 49 @47392 has 37 MA's), (Start: 56 @47404 has 2 MA's), (62, 47419), (66, 47449), (67, 47455), (74, 47479), (119, 47647), (126, 47659), (135, 47704), (154, 47782),

Gene: CosmicBrownie_85 Start: 47189, Stop: 47614, Start Num: 49

Candidate Starts for CosmicBrownie_85:

(Start: 49 @47189 has 37 MA's), (Start: 56 @47201 has 2 MA's), (62, 47216), (66, 47246), (67, 47252), (73, 47270), (74, 47276), (88, 47324), (154, 47579),

Gene: Crescenzo_87 Start: 49757, Stop: 50182, Start Num: 49

Candidate Starts for Crescenzo_87:

(Start: 49 @49757 has 37 MA's), (Start: 56 @49769 has 2 MA's), (62, 49784), (66, 49814), (67, 49820), (74, 49844), (154, 50147),

Gene: Cygnet_45 Start: 29068, Stop: 29529, Start Num: 48

Candidate Starts for Cygnet_45:

(Start: 48 @29068 has 39 MA's), (Start: 63 @29104 has 1 MA's), (90, 29209), (96, 29233), (107, 29275), (131, 29395), (140, 29443), (143, 29452), (149, 29476), (157, 29509), (160, 29518),

Gene: DTDevon_217 Start: 121586, Stop: 122041, Start Num: 53

Candidate Starts for DTDevon_217:

(21, 121472), (29, 121535), (34, 121553), (Start: 53 @121586 has 184 MA's), (62, 121604), (91, 121736), (96, 121754), (112, 121814), (137, 121922), (141, 121946), (157, 122009), (159, 122015),

Gene: Daffodil_220 Start: 120551, Stop: 121006, Start Num: 53

Candidate Starts for Daffodil_220:

(21, 120437), (29, 120500), (34, 120518), (Start: 53 @120551 has 184 MA's), (62, 120569), (91, 120701), (96, 120719), (112, 120779), (137, 120887), (141, 120911), (157, 120974), (159, 120980),

Gene: DanHam62_45 Start: 28340, Stop: 28810, Start Num: 48

Candidate Starts for DanHam62_45:

(Start: 48 @28340 has 39 MA's), (Start: 63 @28376 has 1 MA's), (84, 28457), (90, 28481), (96, 28505), (105, 28529), (107, 28541), (109, 28550), (112, 28559), (117, 28595), (125, 28631), (128, 28643), (131, 28664), (133, 28676), (142, 28718), (153, 28766), (156, 28775),

Gene: Dandelion_223 Start: 123191, Stop: 123646, Start Num: 53

Candidate Starts for Dandelion_223:

(21, 123077), (29, 123140), (34, 123158), (Start: 53 @123191 has 184 MA's), (62, 123209), (91, 123341), (96, 123359), (112, 123419), (137, 123527), (141, 123551), (157, 123614), (159, 123620),

Gene: Darko_214 Start: 119785, Stop: 120240, Start Num: 53

Candidate Starts for Darko_214:

(21, 119671), (29, 119734), (34, 119752), (Start: 53 @119785 has 184 MA's), (62, 119803), (91, 119935), (96, 119953), (112, 120013), (137, 120121), (141, 120145), (157, 120208), (159, 120214),

Gene: DarwinJr_89 Start: 49871, Stop: 50296, Start Num: 49

Candidate Starts for DarwinJr_89:

(Start: 49 @49871 has 37 MA's), (Start: 56 @49883 has 2 MA's), (62, 49898), (66, 49928), (67, 49934), (74, 49958), (154, 50261),

Gene: DeejaClivia_203 Start: 117927, Stop: 118382, Start Num: 53

Candidate Starts for DeejaClivia_203:

(21, 117813), (29, 117876), (34, 117894), (Start: 53 @117927 has 184 MA's), (62, 117945), (91, 118077), (96, 118095), (112, 118155), (137, 118263), (141, 118287), (157, 118350), (159, 118356),

Gene: DelaGarza_42 Start: 25918, Stop: 25496, Start Num: 54

Candidate Starts for DelaGarza_42:

(14, 26086), (25, 25999), (Start: 54 @25918 has 5 MA's), (72, 25852), (92, 25783), (95, 25771), (112, 25711), (139, 25606),

Gene: Delilah_213 Start: 120669, Stop: 121124, Start Num: 53

Candidate Starts for Delilah_213:

(21, 120555), (29, 120618), (34, 120636), (Start: 53 @120669 has 184 MA's), (62, 120687), (91, 120819), (96, 120837), (112, 120897), (137, 121005), (141, 121029), (157, 121092), (159, 121098),

Gene: Delylah_217 Start: 120958, Stop: 121413, Start Num: 53

Candidate Starts for Delylah_217:

(21, 120844), (29, 120907), (34, 120925), (Start: 53 @120958 has 184 MA's), (62, 120976), (91, 121108), (96, 121126), (112, 121186), (137, 121294), (141, 121318), (157, 121381), (159, 121387),

Gene: Demodog_221 Start: 121717, Stop: 122172, Start Num: 53

Candidate Starts for Demodog_221:

(21, 121603), (29, 121666), (34, 121684), (Start: 53 @121717 has 184 MA's), (62, 121735), (91, 121867), (96, 121885), (112, 121945), (137, 122053), (141, 122077), (157, 122140), (159, 122146),

Gene: Derek_212 Start: 120114, Stop: 120569, Start Num: 53

Candidate Starts for Derek_212:

(21, 120000), (29, 120063), (34, 120081), (Start: 53 @120114 has 184 MA's), (62, 120132), (91, 120264), (96, 120282), (112, 120342), (137, 120450), (141, 120474), (157, 120537), (159, 120543),

Gene: Dessert_213 Start: 119114, Stop: 119569, Start Num: 53

Candidate Starts for Dessert_213:

(21, 119000), (29, 119063), (34, 119081), (Start: 53 @119114 has 184 MA's), (62, 119132), (91, 119264), (96, 119282), (112, 119342), (137, 119450), (141, 119474), (157, 119537), (159, 119543),

Gene: Dietrick_204 Start: 118790, Stop: 119245, Start Num: 53

Candidate Starts for Dietrick_204:

(21, 118676), (29, 118739), (34, 118757), (Start: 53 @118790 has 184 MA's), (62, 118808), (91, 118940), (96, 118958), (112, 119018), (137, 119126), (141, 119150), (157, 119213), (159, 119219),

Gene: Ding_88 Start: 47949, Stop: 48350, Start Num: 50

Candidate Starts for Ding_88:

(4, 47613), (6, 47679), (30, 47910), (Start: 50 @47949 has 4 MA's), (74, 48024), (83, 48033), (89, 48066), (101, 48105),

Gene: DinoDaryn_57 Start: 37067, Stop: 37507, Start Num: 38

Candidate Starts for DinoDaryn_57:

(Start: 38 @37067 has 5 MA's), (Start: 48 @37082 has 39 MA's), (62, 37106), (78, 37160), (106, 37262), (112, 37286), (124, 37331),

Gene: DirtMonster_208 Start: 120030, Stop: 120485, Start Num: 53

Candidate Starts for DirtMonster_208:

(21, 119916), (29, 119979), (34, 119997), (Start: 53 @120030 has 184 MA's), (62, 120048), (91, 120180), (96, 120198), (112, 120258), (137, 120366), (141, 120390), (157, 120453), (159, 120459),

Gene: Domi_209 Start: 120141, Stop: 120596, Start Num: 53

Candidate Starts for Domi_209:

(21, 120027), (29, 120090), (34, 120108), (Start: 53 @120141 has 184 MA's), (62, 120159), (91, 120291), (96, 120309), (112, 120369), (137, 120477), (141, 120501), (157, 120564), (159, 120570),

Gene: DrPhinkDaddy_212 Start: 121329, Stop: 121784, Start Num: 53

Candidate Starts for DrPhinkDaddy_212:

(21, 121215), (29, 121278), (34, 121296), (Start: 53 @121329 has 184 MA's), (62, 121347), (91, 121479), (96, 121497), (112, 121557), (137, 121665), (141, 121689), (157, 121752), (159, 121758),

Gene: Drazdys_213 Start: 120231, Stop: 120686, Start Num: 53

Candidate Starts for Drazdys_213:

(21, 120117), (29, 120180), (34, 120198), (Start: 53 @120231 has 184 MA's), (62, 120249), (91, 120381), (96, 120399), (112, 120459), (137, 120567), (141, 120591), (157, 120654), (159, 120660),

Gene: Duckfeet_209 Start: 119757, Stop: 120212, Start Num: 53

Candidate Starts for Duckfeet_209:

(21, 119643), (29, 119706), (34, 119724), (Start: 53 @119757 has 184 MA's), (62, 119775), (91, 119907), (96, 119925), (112, 119985), (137, 120093), (141, 120117), (157, 120180), (159, 120186),

Gene: ET08_203 Start: 119822, Stop: 120277, Start Num: 53

Candidate Starts for ET08_203:

(21, 119708), (29, 119771), (34, 119789), (Start: 53 @119822 has 184 MA's), (62, 119840), (91, 119972), (96, 119990), (112, 120050), (137, 120158), (141, 120182), (157, 120245), (159, 120251),

Gene: EasyJones_218 Start: 119310, Stop: 119765, Start Num: 53

Candidate Starts for EasyJones_218:

(21, 119196), (29, 119259), (34, 119277), (Start: 53 @119310 has 184 MA's), (62, 119328), (91, 119460), (96, 119478), (112, 119538), (137, 119646), (141, 119670), (157, 119733), (159, 119739),

Gene: Eesa_42 Start: 29653, Stop: 30120, Start Num: 48

Candidate Starts for Eesa_42:

(Start: 48 @29653 has 39 MA's), (Start: 63 @29689 has 1 MA's), (81, 29749), (96, 29815), (107, 29851), (112, 29869), (123, 29929), (131, 29974), (138, 30001), (141, 30025), (143, 30031), (155, 30082), (164, 30109),

Gene: EggyFarm_224 Start: 122165, Stop: 122620, Start Num: 53

Candidate Starts for EggyFarm_224:

(21, 122051), (29, 122114), (34, 122132), (37, 122135), (Start: 53 @122165 has 184 MA's), (62, 122183), (91, 122315), (96, 122333), (112, 122393), (137, 122501), (141, 122525), (157, 122588), (159, 122594),

Gene: EmToTheThree_215 Start: 120702, Stop: 121157, Start Num: 53

Candidate Starts for EmToTheThree_215:

(21, 120588), (29, 120651), (34, 120669), (Start: 53 @120702 has 184 MA's), (62, 120720), (91, 120852), (96, 120870), (112, 120930), (137, 121038), (141, 121062), (157, 121125), (159, 121131),

Gene: EmmaElysia_219 Start: 120993, Stop: 121448, Start Num: 53

Candidate Starts for EmmaElysia_219:

(21, 120879), (29, 120942), (34, 120960), (Start: 53 @120993 has 184 MA's), (62, 121011), (91, 121143), (96, 121161), (112, 121221), (137, 121329), (141, 121353), (157, 121416), (159, 121422),

Gene: Erdmann_216 Start: 120661, Stop: 121116, Start Num: 53

Candidate Starts for Erdmann_216:

(21, 120547), (29, 120610), (34, 120628), (Start: 53 @120661 has 184 MA's), (62, 120679), (91, 120811), (96, 120829), (112, 120889), (137, 120997), (141, 121021), (157, 121084), (159, 121090),

Gene: ErnieJ_208 Start: 117489, Stop: 117944, Start Num: 53

Candidate Starts for ErnieJ_208:

(21, 117375), (29, 117438), (34, 117456), (Start: 53 @117489 has 184 MA's), (62, 117507), (91, 117639), (96, 117657), (112, 117717), (137, 117825), (141, 117849), (157, 117912), (159, 117918),

Gene: Essence_212 Start: 119443, Stop: 119898, Start Num: 53

Candidate Starts for Essence_212:

(21, 119329), (29, 119392), (34, 119410), (Start: 53 @119443 has 184 MA's), (62, 119461), (91, 119593), (96, 119611), (112, 119671), (137, 119779), (141, 119803), (157, 119866), (159, 119872),

Gene: EvePickles_87 Start: 49459, Stop: 49884, Start Num: 49

Candidate Starts for EvePickles_87:

(Start: 49 @49459 has 37 MA's), (Start: 56 @49471 has 2 MA's), (62, 49486), (66, 49516), (67, 49522), (88, 49594), (101, 49636), (127, 49729), (132, 49765), (154, 49849),

Gene: Ewok_214 Start: 120579, Stop: 121034, Start Num: 53

Candidate Starts for Ewok_214:

(21, 120465), (29, 120528), (34, 120546), (Start: 53 @120579 has 184 MA's), (62, 120597), (91, 120729), (96, 120747), (112, 120807), (137, 120915), (141, 120939), (157, 121002), (159, 121008),

Gene: Faja_87 Start: 48745, Stop: 49170, Start Num: 49

Candidate Starts for Faja_87:

(19, 48640), (Start: 49 @48745 has 37 MA's), (Start: 56 @48757 has 2 MA's), (62, 48772), (66, 48802), (67, 48808), (74, 48832), (88, 48880), (101, 48922), (116, 48991), (154, 49135),

Gene: Fingolfin_45 Start: 28343, Stop: 28813, Start Num: 48

Candidate Starts for Fingolfin_45:

(Start: 48 @28343 has 39 MA's), (Start: 63 @28379 has 1 MA's), (84, 28460), (90, 28484), (96, 28508), (105, 28532), (107, 28544), (109, 28553), (112, 28562), (117, 28598), (125, 28634), (128, 28646), (131, 28667), (133, 28679), (142, 28721), (153, 28769), (156, 28778),

Gene: Fixie_215 Start: 120223, Stop: 120678, Start Num: 53

Candidate Starts for Fixie_215:

(21, 120109), (29, 120172), (34, 120190), (Start: 53 @120223 has 184 MA's), (62, 120241), (91, 120373), (96, 120391), (112, 120451), (137, 120559), (141, 120583), (157, 120646), (159, 120652),

Gene: Flabslab_210 Start: 117631, Stop: 118086, Start Num: 53

Candidate Starts for Flabslab_210:

(21, 117517), (29, 117580), (34, 117598), (Start: 53 @117631 has 184 MA's), (62, 117649), (91, 117781), (96, 117799), (112, 117859), (137, 117967), (141, 117991), (157, 118054), (159, 118060),

Gene: Fludd_215 Start: 119022, Stop: 119477, Start Num: 53

Candidate Starts for Fludd_215:

(21, 118908), (29, 118971), (34, 118989), (Start: 53 @119022 has 184 MA's), (62, 119040), (91, 119172), (96, 119190), (112, 119250), (137, 119358), (141, 119382), (157, 119445), (159, 119451),

Gene: Fongie_216 Start: 120602, Stop: 121057, Start Num: 53

Candidate Starts for Fongie_216:

(21, 120488), (29, 120551), (34, 120569), (Start: 53 @120602 has 184 MA's), (62, 120620), (91, 120752), (96, 120770), (112, 120830), (137, 120938), (141, 120962), (157, 121025), (159, 121031),

Gene: FoxtrotP1_213 Start: 121259, Stop: 121714, Start Num: 53

Candidate Starts for FoxtrotP1_213:

(21, 121145), (29, 121208), (34, 121226), (Start: 53 @121259 has 184 MA's), (62, 121277), (91, 121409), (96, 121427), (112, 121487), (137, 121595), (141, 121619), (157, 121682), (159, 121688),

Gene: FrayBell_218 Start: 119112, Stop: 119567, Start Num: 53

Candidate Starts for FrayBell_218:

(21, 118998), (29, 119061), (34, 119079), (Start: 53 @119112 has 184 MA's), (62, 119130), (91, 119262), (96, 119280), (112, 119340), (137, 119448), (141, 119472), (157, 119535), (159, 119541),

Gene: Fregley_61 Start: 42057, Stop: 41593, Start Num: 49

Candidate Starts for Fregley_61:

(47, 42060), (Start: 49 @42057 has 37 MA's), (65, 42012), (89, 41925), (99, 41889), (115, 41814), (134, 41748), (138, 41736), (139, 41733), (150, 41682), (165, 41619), (166, 41616),

Gene: FudgeTart_210 Start: 119726, Stop: 120181, Start Num: 53

Candidate Starts for FudgeTart_210:

(21, 119612), (29, 119675), (34, 119693), (Start: 53 @119726 has 184 MA's), (62, 119744), (91, 119876), (96, 119894), (112, 119954), (137, 120062), (141, 120086), (157, 120149), (159, 120155),

Gene: GUPitcher_62 Start: 39387, Stop: 39782, Start Num: 54

Candidate Starts for GUPitcher_62:

(12, 39192), (13, 39198), (Start: 50 @39381 has 4 MA's), (Start: 54 @39387 has 5 MA's), (62, 39405), (70, 39444), (74, 39459), (75, 39462), (78, 39468), (91, 39504), (94, 39516), (107, 39564), (112, 39582),

Gene: Gabriel_218 Start: 119181, Stop: 119636, Start Num: 53

Candidate Starts for Gabriel_218:

(21, 119067), (29, 119130), (34, 119148), (Start: 53 @119181 has 184 MA's), (62, 119199), (91, 119331), (96, 119349), (112, 119409), (137, 119517), (141, 119541), (157, 119604), (159, 119610),

Gene: Galaxy_41 Start: 27422, Stop: 27892, Start Num: 48

Candidate Starts for Galaxy_41:

(Start: 48 @27422 has 39 MA's), (57, 27437), (Start: 63 @27458 has 1 MA's), (64, 27464), (90, 27560), (107, 27620), (112, 27638), (117, 27674), (138, 27773), (141, 27797), (147, 27815), (155, 27854), (157, 27860), (164, 27881),

Gene: Gamgam_216 Start: 119538, Stop: 119993, Start Num: 53

Candidate Starts for Gamgam_216:

(21, 119424), (29, 119487), (34, 119505), (Start: 53 @119538 has 184 MA's), (62, 119556), (91, 119688), (96, 119706), (112, 119766), (137, 119874), (141, 119898), (157, 119961), (159, 119967),

Gene: Ghost_215 Start: 119459, Stop: 119914, Start Num: 53

Candidate Starts for Ghost_215:

(21, 119345), (29, 119408), (34, 119426), (Start: 53 @119459 has 184 MA's), (62, 119477), (84, 119579), (91, 119609), (96, 119627), (112, 119687), (137, 119795), (141, 119819), (157, 119882), (159, 119888),

Gene: Gingerbug_41 Start: 26445, Stop: 26023, Start Num: 54

Candidate Starts for Gingerbug_41:

(Start: 54 @26445 has 5 MA's), (80, 26358), (106, 26262), (107, 26256), (112, 26238), (141, 26112), (146, 26097), (152, 26067), (162, 26037),

Gene: Gizmo_221 Start: 122577, Stop: 123032, Start Num: 53

Candidate Starts for Gizmo_221:

(21, 122463), (29, 122526), (34, 122544), (Start: 53 @122577 has 184 MA's), (62, 122595), (91, 122727), (96, 122745), (112, 122805), (137, 122913), (141, 122937), (157, 123000), (159, 123006),

Gene: Globfish_85 Start: 47014, Stop: 47436, Start Num: 49

Candidate Starts for Globfish_85:

(Start: 49 @47014 has 37 MA's), (Start: 56 @47023 has 2 MA's), (62, 47038), (66, 47068), (67, 47074), (74, 47098), (101, 47188), (119, 47266), (126, 47278), (154, 47401),

Gene: Glotell_46 Start: 28397, Stop: 28867, Start Num: 48

Candidate Starts for Glotell_46:

(Start: 48 @28397 has 39 MA's), (Start: 63 @28433 has 1 MA's), (84, 28514), (90, 28538), (96, 28562), (105, 28586), (107, 28598), (109, 28607), (112, 28616), (117, 28652), (125, 28688), (128, 28700), (131, 28721), (133, 28733), (142, 28775), (153, 28823), (156, 28832),

Gene: GlutenPhree_216 Start: 119549, Stop: 120004, Start Num: 53

Candidate Starts for GlutenPhree_216:

(21, 119435), (29, 119498), (34, 119516), (Start: 53 @119549 has 184 MA's), (62, 119567), (91, 119699), (96, 119717), (112, 119777), (137, 119885), (141, 119909), (157, 119972), (159, 119978),

Gene: Goib_58 Start: 38192, Stop: 38617, Start Num: 46

Candidate Starts for Goib_58:

(39, 38183), (45, 38189), (Start: 46 @38192 has 1 MA's), (62, 38216), (78, 38270), (106, 38372), (112, 38396), (124, 38441),

Gene: Gorpy_83 Start: 48809, Stop: 49234, Start Num: 49

Candidate Starts for Gorpy_83:

(Start: 49 @48809 has 37 MA's), (Start: 56 @48821 has 2 MA's), (62, 48836), (66, 48866), (67, 48872), (119, 49064), (126, 49076), (154, 49199),

Gene: GramZayde_45 Start: 27542, Stop: 27913, Start Num: 81

Candidate Starts for GramZayde_45:

(28, 27389), (Start: 48 @27446 has 39 MA's), (Start: 63 @27482 has 1 MA's), (81, 27542), (92, 27593), (96, 27608), (107, 27644), (123, 27722), (125, 27734), (138, 27794), (141, 27818), (153, 27869), (155, 27875), (162, 27896), (164, 27902),

Gene: Grasshills_223 Start: 122164, Stop: 122619, Start Num: 53

Candidate Starts for Grasshills_223:

(21, 122050), (29, 122113), (34, 122131), (37, 122134), (Start: 53 @122164 has 184 MA's), (62, 122182), (91, 122314), (96, 122332), (112, 122392), (137, 122500), (141, 122524), (157, 122587), (159, 122593),

Gene: Gravel_52 Start: 29743, Stop: 30210, Start Num: 48

Candidate Starts for Gravel_52:

(Start: 48 @29743 has 39 MA's), (Start: 63 @29779 has 1 MA's), (81, 29839), (96, 29905), (107, 29941), (112, 29959), (123, 30019), (131, 30064), (138, 30091), (141, 30115), (143, 30121), (155,

30172), (164, 30199),

Gene: Grungle_199 Start: 117496, Stop: 117951, Start Num: 53

Candidate Starts for Grungle_199:

(21, 117382), (29, 117445), (34, 117463), (Start: 53 @117496 has 184 MA's), (62, 117514), (91, 117646), (96, 117664), (112, 117724), (137, 117832), (141, 117856), (157, 117919), (159, 117925),

Gene: GumGum_93 Start: 49153, Stop: 49578, Start Num: 49

Candidate Starts for GumGum_93:

(9, 48901), (15, 49000), (Start: 49 @49153 has 37 MA's), (Start: 56 @49165 has 2 MA's), (66, 49210), (67, 49216), (74, 49240), (88, 49288), (119, 49408), (126, 49420), (135, 49465), (154, 49543),

Gene: Guwapp_210 Start: 118293, Stop: 118748, Start Num: 53

Candidate Starts for Guwapp_210:

(21, 118179), (29, 118242), (34, 118260), (Start: 53 @118293 has 184 MA's), (62, 118311), (91, 118443), (96, 118461), (112, 118521), (137, 118629), (141, 118653), (157, 118716), (159, 118722),

Gene: Halldule_208 Start: 118678, Stop: 119133, Start Num: 53

Candidate Starts for Halldule_208:

(21, 118564), (29, 118627), (34, 118645), (Start: 53 @118678 has 184 MA's), (62, 118696), (91, 118828), (96, 118846), (112, 118906), (137, 119014), (141, 119038), (157, 119101), (159, 119107),

Gene: HamCheese_45 Start: 28327, Stop: 28797, Start Num: 48

Candidate Starts for HamCheese_45:

(Start: 48 @28327 has 39 MA's), (Start: 63 @28363 has 1 MA's), (84, 28444), (90, 28468), (96, 28492), (105, 28516), (107, 28528), (109, 28537), (112, 28546), (117, 28582), (125, 28618), (128, 28630), (131, 28651), (133, 28663), (142, 28705), (153, 28753), (156, 28762),

Gene: Hestia_80 Start: 45962, Stop: 46387, Start Num: 49

Candidate Starts for Hestia_80:

(Start: 49 @45962 has 37 MA's), (Start: 56 @45974 has 2 MA's), (62, 45989), (66, 46019), (67, 46025), (74, 46049), (101, 46139), (154, 46352),

Gene: Hillester_90 Start: 48709, Stop: 49134, Start Num: 49

Candidate Starts for Hillester_90:

(33, 48679), (Start: 49 @48709 has 37 MA's), (Start: 56 @48721 has 2 MA's), (62, 48736), (66, 48766), (67, 48772), (74, 48796), (88, 48844), (101, 48886), (116, 48955), (154, 49099),

Gene: Huffy_57 Start: 37067, Stop: 37507, Start Num: 38

Candidate Starts for Huffy_57:

(Start: 38 @37067 has 5 MA's), (Start: 48 @37082 has 39 MA's), (62, 37106), (78, 37160), (106, 37262), (112, 37286), (124, 37331),

Gene: HyRo_203 Start: 118809, Stop: 119264, Start Num: 53

Candidate Starts for HyRo_203:

(21, 118695), (29, 118758), (34, 118776), (Start: 53 @118809 has 184 MA's), (62, 118827), (91, 118959), (96, 118977), (112, 119037), (137, 119145), (141, 119169), (157, 119232), (159, 119238),

Gene: I3_225 Start: 121254, Stop: 121709, Start Num: 53

Candidate Starts for I3_225:

(21, 121140), (29, 121203), (34, 121221), (Start: 53 @121254 has 184 MA's), (62, 121272), (69, 121314), (91, 121404), (96, 121422), (112, 121482), (137, 121590), (141, 121614), (157, 121677), (159, 121683),

Gene: IkeLoa_207 Start: 119203, Stop: 119658, Start Num: 53

Candidate Starts for IkeLoa_207:

(21, 119089), (29, 119152), (34, 119170), (Start: 53 @119203 has 184 MA's), (62, 119221), (91, 119353), (96, 119371), (112, 119431), (137, 119539), (141, 119563), (157, 119626), (159, 119632),

Gene: InigoMontoya_218 Start: 120212, Stop: 120667, Start Num: 53

Candidate Starts for InigoMontoya_218:

(21, 120098), (29, 120161), (34, 120179), (Start: 53 @120212 has 184 MA's), (62, 120230), (91, 120362), (96, 120380), (112, 120440), (137, 120548), (141, 120572), (157, 120635), (159, 120641),

Gene: InterFolia_218 Start: 120917, Stop: 121372, Start Num: 53

Candidate Starts for InterFolia_218:

(21, 120803), (29, 120866), (34, 120884), (Start: 53 @120917 has 184 MA's), (62, 120935), (91, 121067), (96, 121085), (112, 121145), (137, 121253), (141, 121277), (157, 121340), (159, 121346),

Gene: Iota_210 Start: 119897, Stop: 120352, Start Num: 53

Candidate Starts for Iota_210:

(21, 119783), (29, 119846), (34, 119864), (Start: 53 @119897 has 184 MA's), (62, 119915), (91, 120047), (96, 120065), (112, 120125), (137, 120233), (141, 120257), (157, 120320), (159, 120326),

Gene: Isolde_87 Start: 49198, Stop: 49623, Start Num: 49

Candidate Starts for Isolde_87:

(33, 49168), (Start: 49 @49198 has 37 MA's), (Start: 56 @49210 has 2 MA's), (62, 49225), (66, 49255), (67, 49261), (74, 49285), (154, 49588),

Gene: Issimir_208 Start: 119850, Stop: 120305, Start Num: 53

Candidate Starts for Issimir_208:

(21, 119736), (29, 119799), (34, 119817), (Start: 53 @119850 has 184 MA's), (62, 119868), (91, 120000), (96, 120018), (112, 120078), (137, 120186), (141, 120210), (157, 120273), (159, 120279),

Gene: Izajani_213 Start: 120719, Stop: 121174, Start Num: 53

Candidate Starts for Izajani_213:

(21, 120605), (29, 120668), (34, 120686), (Start: 53 @120719 has 184 MA's), (62, 120737), (91, 120869), (96, 120887), (112, 120947), (137, 121055), (141, 121079), (157, 121142), (159, 121148),

Gene: JPickles_211 Start: 118197, Stop: 118652, Start Num: 53

Candidate Starts for JPickles_211:

(21, 118083), (29, 118146), (34, 118164), (Start: 53 @118197 has 184 MA's), (62, 118215), (91, 118347), (96, 118365), (112, 118425), (137, 118533), (141, 118557), (157, 118620), (159, 118626),

Gene: JakeTheSnake_89 Start: 50117, Stop: 50518, Start Num: 50

Candidate Starts for JakeTheSnake_89:

(41, 50102), (Start: 50 @50117 has 4 MA's), (74, 50192), (83, 50201), (151, 50477),

Gene: Jamun_42 Start: 28931, Stop: 29401, Start Num: 48

Candidate Starts for Jamun_42:

(Start: 48 @28931 has 39 MA's), (Start: 63 @28967 has 1 MA's), (64, 28973), (90, 29069), (107, 29129), (112, 29147), (117, 29183), (123, 29210), (128, 29234), (138, 29282), (141, 29306), (147, 29324), (153, 29357), (155, 29363), (157, 29369), (164, 29390),

Gene: Janiyra_218 Start: 120437, Stop: 120892, Start Num: 53

Candidate Starts for Janiyra_218:

(21, 120323), (29, 120386), (34, 120404), (Start: 53 @120437 has 184 MA's), (62, 120455), (91, 120587), (96, 120605), (112, 120665), (137, 120773), (141, 120797), (157, 120860), (159, 120866),

Gene: JayJay_217 Start: 120141, Stop: 120596, Start Num: 53

Candidate Starts for JayJay_217:

(21, 120027), (29, 120090), (34, 120108), (Start: 53 @120141 has 184 MA's), (62, 120159), (91, 120291), (96, 120309), (112, 120369), (137, 120477), (141, 120501), (157, 120564), (159, 120570),

Gene: Jaygup_211 Start: 119258, Stop: 119713, Start Num: 53

Candidate Starts for Jaygup_211:

(21, 119144), (29, 119207), (34, 119225), (Start: 53 @119258 has 184 MA's), (62, 119276), (91, 119408), (96, 119426), (112, 119486), (137, 119594), (141, 119618), (157, 119681), (159, 119687),

Gene: JeanClaude_61 Start: 33888, Stop: 34313, Start Num: 48

Candidate Starts for JeanClaude_61:

(24, 33822), (Start: 48 @33888 has 39 MA's), (83, 33984), (106, 34074), (141, 34224),

Gene: Jedediah_215 Start: 120311, Stop: 120766, Start Num: 53

Candidate Starts for Jedediah_215:

(21, 120197), (29, 120260), (34, 120278), (Start: 53 @120311 has 184 MA's), (62, 120329), (91, 120461), (96, 120479), (112, 120539), (137, 120647), (141, 120671), (157, 120734), (159, 120740),

Gene: JellyBread_82 Start: 47875, Stop: 48285, Start Num: 49

Candidate Starts for JellyBread_82:

(Start: 49 @47875 has 37 MA's), (Start: 56 @47887 has 2 MA's), (62, 47902), (66, 47932), (67, 47938), (74, 47962), (101, 48052), (104, 48058), (106, 48070), (113, 48109), (121, 48133), (127, 48145), (153, 48247), (158, 48262),

Gene: Jemmno_214 Start: 119140, Stop: 119595, Start Num: 53

Candidate Starts for Jemmno_214:

(21, 119026), (29, 119089), (34, 119107), (Start: 53 @119140 has 184 MA's), (62, 119158), (91, 119290), (96, 119308), (112, 119368), (137, 119476), (141, 119500), (157, 119563), (159, 119569),

Gene: Jessibeth14_215 Start: 121328, Stop: 121783, Start Num: 53

Candidate Starts for Jessibeth14_215:

(21, 121214), (29, 121277), (34, 121295), (Start: 53 @121328 has 184 MA's), (62, 121346), (91, 121478), (96, 121496), (112, 121556), (137, 121664), (141, 121688), (157, 121751), (159, 121757),

Gene: Jezreel_212 Start: 120398, Stop: 120853, Start Num: 53

Candidate Starts for Jezreel_212:

(21, 120284), (29, 120347), (34, 120365), (Start: 53 @120398 has 184 MA's), (62, 120416), (91, 120548), (96, 120566), (112, 120626), (137, 120734), (141, 120758), (157, 120821), (159, 120827),

Gene: JigglyPuff_222 Start: 121715, Stop: 122170, Start Num: 53

Candidate Starts for JigglyPuff_222:

(21, 121601), (29, 121664), (34, 121682), (Start: 53 @121715 has 184 MA's), (62, 121733), (91, 121865), (96, 121883), (112, 121943), (137, 122051), (141, 122075), (157, 122138), (159, 122144),

Gene: JulietS_206 Start: 117438, Stop: 117893, Start Num: 53

Candidate Starts for JulietS_206:

(1, 116919), (21, 117324), (29, 117387), (34, 117405), (Start: 53 @117438 has 184 MA's), (62, 117456), (91, 117588), (96, 117606), (112, 117666), (137, 117774), (141, 117798), (157, 117861), (159, 117867),

Gene: Juno112_44 Start: 28343, Stop: 28813, Start Num: 48

Candidate Starts for Juno112_44:

(Start: 48 @28343 has 39 MA's), (Start: 63 @28379 has 1 MA's), (84, 28460), (90, 28484), (96, 28508), (105, 28532), (107, 28544), (109, 28553), (112, 28562), (117, 28598), (125, 28634), (128, 28646), (131, 28667), (133, 28679), (142, 28721), (153, 28769), (156, 28778),

Gene: JustHall_209 Start: 119344, Stop: 119799, Start Num: 53

Candidate Starts for JustHall_209:

(21, 119230), (29, 119293), (34, 119311), (Start: 53 @119344 has 184 MA's), (62, 119362), (91, 119494), (96, 119512), (112, 119572), (137, 119680), (141, 119704), (157, 119767), (159, 119773),

Gene: KHumphrey_45 Start: 28276, Stop: 28710, Start Num: 63

Candidate Starts for KHumphrey_45:

(Start: 48 @28240 has 39 MA's), (Start: 63 @28276 has 1 MA's), (84, 28357), (90, 28381), (96, 28405), (105, 28429), (107, 28441), (109, 28450), (112, 28459), (117, 28495), (125, 28531), (131, 28564), (133, 28576), (142, 28618), (153, 28666), (156, 28675),

Gene: Kabloowy_86 Start: 48768, Stop: 49193, Start Num: 49

Candidate Starts for Kabloowy_86:

(Start: 49 @48768 has 37 MA's), (Start: 56 @48780 has 2 MA's), (62, 48795), (66, 48825), (67, 48831), (74, 48855), (87, 48900), (88, 48903), (154, 49158),

Gene: Kamryn_214 Start: 120974, Stop: 121429, Start Num: 53

Candidate Starts for Kamryn_214:

(21, 120860), (29, 120923), (34, 120941), (Start: 53 @120974 has 184 MA's), (62, 120992), (91, 121124), (96, 121142), (112, 121202), (137, 121310), (141, 121334), (157, 121397), (159, 121403),

Gene: Kboogie_219 Start: 120002, Stop: 120457, Start Num: 53

Candidate Starts for Kboogie_219:

(21, 119888), (29, 119951), (34, 119969), (Start: 53 @120002 has 184 MA's), (62, 120020), (91, 120152), (96, 120170), (112, 120230), (137, 120338), (141, 120362), (157, 120425), (159, 120431),

Gene: KendraB23_53 Start: 29930, Stop: 30397, Start Num: 48

Candidate Starts for KendraB23_53:

(Start: 48 @29930 has 39 MA's), (Start: 63 @29966 has 1 MA's), (81, 30026), (96, 30092), (107, 30128), (112, 30146), (123, 30206), (138, 30278), (141, 30302), (143, 30308), (155, 30359), (162, 30380), (164, 30386),

Gene: Khaleesi_214 Start: 120795, Stop: 121250, Start Num: 53

Candidate Starts for Khaleesi_214:

(21, 120681), (29, 120744), (34, 120762), (Start: 53 @120795 has 184 MA's), (62, 120813), (91, 120945), (96, 120963), (112, 121023), (137, 121131), (141, 121155), (157, 121218), (159, 121224),

Gene: Khuang_63 Start: 36921, Stop: 37343, Start Num: 50

Candidate Starts for Khuang_63:

(Start: 50 @36921 has 4 MA's), (80, 37011), (83, 37017), (104, 37095), (138, 37233),

Gene: Koguma_214 Start: 119655, Stop: 120110, Start Num: 53

Candidate Starts for Koguma_214:

(21, 119541), (29, 119604), (34, 119622), (Start: 53 @119655 has 184 MA's), (62, 119673), (91, 119805), (96, 119823), (112, 119883), (137, 119991), (141, 120015), (157, 120078), (159, 120084),

Gene: Kudefre_85 Start: 49906, Stop: 50304, Start Num: 53

Candidate Starts for Kudefre_85:

(Start: 53 @49906 has 184 MA's), (61, 49918), (62, 49924), (78, 49978), (93, 50032), (104, 50059), (112, 50095), (114, 50113), (128, 50155), (130, 50164), (131, 50176), (153, 50275),

Gene: Kuleana_45 Start: 27612, Stop: 28070, Start Num: 48

Candidate Starts for Kuleana_45:

(Start: 48 @27612 has 39 MA's), (Start: 63 @27648 has 1 MA's), (96, 27777), (102, 27795), (107, 27813), (112, 27831), (141, 27987), (153, 28038), (155, 28044), (160, 28059),

Gene: Kumotta_70 Start: 37512, Stop: 37922, Start Num: 56

Candidate Starts for Kumotta_70:

(Start: 56 @37512 has 2 MA's),

Gene: LRRHood_208 Start: 119007, Stop: 119462, Start Num: 53

Candidate Starts for LRRHood_208:

(21, 118893), (29, 118956), (34, 118974), (Start: 53 @119007 has 184 MA's), (62, 119025), (91, 119157), (96, 119175), (112, 119235), (137, 119343), (141, 119367), (157, 119430), (159, 119436),

Gene: Labradorite_213 Start: 118749, Stop: 119204, Start Num: 53

Candidate Starts for Labradorite_213:

(21, 118635), (29, 118698), (34, 118716), (Start: 53 @118749 has 184 MA's), (62, 118767), (91, 118899), (96, 118917), (112, 118977), (137, 119085), (141, 119109), (157, 119172), (159, 119178),

Gene: Laphuphu24k_44 Start: 28363, Stop: 28797, Start Num: 63

Candidate Starts for Laphuphu24k_44:

(Start: 48 @28327 has 39 MA's), (Start: 63 @28363 has 1 MA's), (84, 28444), (90, 28468), (96, 28492), (105, 28516), (107, 28528), (109, 28537), (112, 28546), (117, 28582), (125, 28618), (128, 28630), (131, 28651), (133, 28663), (142, 28705), (153, 28753), (156, 28762),

Gene: Lasker_88 Start: 49087, Stop: 49518, Start Num: 49

Candidate Starts for Lasker_88:

(Start: 49 @49087 has 37 MA's), (Start: 56 @49099 has 2 MA's), (62, 49114), (66, 49144), (67, 49150), (74, 49174), (101, 49264), (119, 49342), (126, 49354), (154, 49477),

Gene: Latch_215 Start: 119548, Stop: 120003, Start Num: 53

Candidate Starts for Latch_215:

(21, 119434), (29, 119497), (34, 119515), (Start: 53 @119548 has 184 MA's), (62, 119566), (91, 119698), (96, 119716), (112, 119776), (137, 119884), (141, 119908), (157, 119971), (159, 119977),

Gene: Lawnathon_89 Start: 48159, Stop: 48584, Start Num: 49

Candidate Starts for Lawnathon_89:

(33, 48129), (Start: 49 @48159 has 37 MA's), (Start: 56 @48171 has 2 MA's), (62, 48186), (66, 48216), (67, 48222), (119, 48414), (126, 48426), (135, 48471), (154, 48549),

Gene: LeBruni_87 Start: 48342, Stop: 48743, Start Num: 49

Candidate Starts for LeBruni_87:

(2, 47949), (Start: 49 @48342 has 37 MA's), (Start: 56 @48351 has 2 MA's), (62, 48366), (66, 48396), (67, 48402), (104, 48522), (106, 48534), (113, 48573), (119, 48594), (121, 48597), (129, 48618), (138, 48645), (141, 48669), (154, 48714),

Gene: Lee7_215 Start: 122175, Stop: 122630, Start Num: 53

Candidate Starts for Lee7_215:

(21, 122061), (29, 122124), (34, 122142), (Start: 53 @122175 has 184 MA's), (62, 122193), (91, 122325), (96, 122343), (112, 122403), (137, 122511), (141, 122535), (157, 122598), (159, 122604),

Gene: Leona_44 Start: 28420, Stop: 28890, Start Num: 48

Candidate Starts for Leona_44:

(Start: 48 @28420 has 39 MA's), (Start: 63 @28456 has 1 MA's), (90, 28561), (96, 28585), (105, 28609), (107, 28621), (109, 28630), (112, 28639), (117, 28675), (125, 28711), (128, 28723), (131, 28744), (133, 28756), (142, 28798), (153, 28846), (156, 28855),

Gene: Lesiram_43 Start: 25890, Stop: 25468, Start Num: 54

Candidate Starts for Lesiram_43:

(Start: 54 @25890 has 5 MA's), (72, 25824), (92, 25755), (95, 25743), (109, 25692), (112, 25683), (139, 25578),

Gene: Lethe_215 Start: 121438, Stop: 121893, Start Num: 53

Candidate Starts for Lethe_215:

(21, 121324), (29, 121387), (34, 121405), (Start: 53 @121438 has 184 MA's), (62, 121456), (91, 121588), (96, 121606), (112, 121666), (137, 121774), (141, 121798), (157, 121861), (159, 121867),

Gene: LifeSavor_214 Start: 120073, Stop: 120528, Start Num: 53

Candidate Starts for LifeSavor_214:

(21, 119959), (29, 120022), (34, 120040), (Start: 53 @120073 has 184 MA's), (62, 120091), (91, 120223), (96, 120241), (112, 120301), (137, 120409), (141, 120433), (157, 120496), (159, 120502),

Gene: LilJank_79 Start: 49581, Stop: 50012, Start Num: 59

Candidate Starts for LilJank_79:

(Start: 50 @49566 has 4 MA's), (Start: 52 @49572 has 2 MA's), (59, 49581), (86, 49674), (92, 49701), (106, 49743), (111, 49764), (112, 49767), (114, 49785), (128, 49830), (141, 49899), (143, 49905), (145, 49911), (146, 49914), (148, 49923), (157, 49962),

Gene: LinStu_214 Start: 119294, Stop: 119749, Start Num: 53

Candidate Starts for LinStu_214:

(21, 119180), (29, 119243), (34, 119261), (Start: 53 @119294 has 184 MA's), (62, 119312), (91, 119444), (96, 119462), (112, 119522), (137, 119630), (141, 119654), (157, 119717), (159, 119723),

Gene: LittleTokyo_43 Start: 27119, Stop: 27583, Start Num: 48

Candidate Starts for LittleTokyo_43:

(Start: 48 @27119 has 39 MA's), (Start: 63 @27155 has 1 MA's), (90, 27260), (112, 27335), (128, 27416), (131, 27437), (153, 27539), (155, 27545),

Gene: Littleton_218 Start: 120785, Stop: 121240, Start Num: 53

Candidate Starts for Littleton_218:

(21, 120671), (29, 120734), (34, 120752), (Start: 53 @120785 has 184 MA's), (62, 120803), (91, 120935), (96, 120953), (112, 121013), (137, 121121), (141, 121145), (157, 121208), (159, 121214),

Gene: Loanshark_212 Start: 120110, Stop: 120565, Start Num: 53

Candidate Starts for Loanshark_212:

(21, 119996), (29, 120059), (34, 120077), (Start: 53 @120110 has 184 MA's), (62, 120128), (91, 120260), (96, 120278), (112, 120338), (137, 120446), (141, 120470), (157, 120533), (159, 120539),

Gene: LolaVinca_213 Start: 120347, Stop: 120802, Start Num: 53

Candidate Starts for LolaVinca_213:

(21, 120233), (29, 120296), (34, 120314), (Start: 53 @120347 has 184 MA's), (62, 120365), (91, 120497), (96, 120515), (112, 120575), (137, 120683), (141, 120707), (157, 120770), (159, 120776),

Gene: LookingGlass_214 Start: 120305, Stop: 120760, Start Num: 53

Candidate Starts for LookingGlass_214:

(21, 120191), (29, 120254), (34, 120272), (Start: 53 @120305 has 184 MA's), (62, 120323), (91, 120455), (96, 120473), (112, 120533), (137, 120641), (141, 120665), (157, 120728), (159, 120734),

Gene: LordLeafolot_216 Start: 119960, Stop: 120415, Start Num: 53

Candidate Starts for LordLeafolot_216:

(21, 119846), (29, 119909), (34, 119927), (Start: 53 @119960 has 184 MA's), (62, 119978), (91, 120110), (96, 120128), (112, 120188), (137, 120296), (141, 120320), (157, 120383), (159, 120389),

Gene: Lukilu_206 Start: 121010, Stop: 121465, Start Num: 53

Candidate Starts for Lukilu_206:

(21, 120896), (29, 120959), (34, 120977), (Start: 53 @121010 has 184 MA's), (62, 121028), (91, 121160), (96, 121178), (112, 121238), (137, 121346), (141, 121370), (157, 121433), (159, 121439),

Gene: Lunareta_213 Start: 120653, Stop: 121108, Start Num: 53

Candidate Starts for Lunareta_213:

(21, 120539), (29, 120602), (34, 120620), (Start: 53 @120653 has 184 MA's), (62, 120671), (91, 120803), (96, 120821), (112, 120881), (137, 120989), (141, 121013), (157, 121076), (159, 121082),

Gene: MUWow_88 Start: 49555, Stop: 49980, Start Num: 49

Candidate Starts for MUWow_88:

(19, 49450), (Start: 49 @49555 has 37 MA's), (Start: 56 @49567 has 2 MA's), (62, 49582), (66, 49612), (67, 49618), (74, 49642), (119, 49810), (126, 49822), (154, 49945),

Gene: Maby2021_215 Start: 121239, Stop: 121694, Start Num: 53

Candidate Starts for Maby2021_215:

(21, 121125), (29, 121188), (34, 121206), (Start: 53 @121239 has 184 MA's), (62, 121257), (91, 121389), (96, 121407), (112, 121467), (137, 121575), (141, 121599), (157, 121662), (159, 121668),

Gene: Mangeria_216 Start: 121341, Stop: 121796, Start Num: 53

Candidate Starts for Mangeria_216:

(21, 121227), (29, 121290), (34, 121308), (Start: 53 @121341 has 184 MA's), (62, 121359), (91, 121491), (96, 121509), (112, 121569), (137, 121677), (141, 121701), (157, 121764), (159, 121770),

Gene: Mapleville_79 Start: 46764, Stop: 47165, Start Num: 49

Candidate Starts for Mapleville_79:

(Start: 49 @46764 has 37 MA's), (Start: 56 @46776 has 2 MA's), (62, 46791), (66, 46821), (67, 46827), (74, 46851), (101, 46941), (104, 46947), (106, 46959), (113, 46998), (126, 47031), (145, 47106),

Gene: MargaretKali_66 Start: 36130, Stop: 36540, Start Num: 56

Candidate Starts for MargaretKali_66:

(Start: 56 @36130 has 2 MA's),

Gene: MaterMagnus_86 Start: 49021, Stop: 49443, Start Num: 49

Candidate Starts for MaterMagnus_86:

(Start: 49 @49021 has 37 MA's), (Start: 56 @49030 has 2 MA's), (62, 49045), (66, 49075), (67, 49081), (74, 49105), (101, 49195), (154, 49408),

Gene: Matsumoto_213 Start: 119990, Stop: 120445, Start Num: 53

Candidate Starts for Matsumoto_213:

(21, 119876), (29, 119939), (34, 119957), (Start: 53 @119990 has 184 MA's), (62, 120008), (91, 120140), (96, 120158), (112, 120218), (137, 120326), (141, 120350), (157, 120413), (159, 120419),

Gene: Maturis_212 Start: 119509, Stop: 119964, Start Num: 53

Candidate Starts for Maturis_212:

(21, 119395), (29, 119458), (34, 119476), (Start: 53 @119509 has 184 MA's), (62, 119527), (91, 119659), (96, 119677), (112, 119737), (137, 119845), (141, 119869), (157, 119932), (159, 119938),

Gene: McGee_214 Start: 119184, Stop: 119639, Start Num: 53

Candidate Starts for McGee_214:

(21, 119070), (29, 119133), (34, 119151), (Start: 53 @119184 has 184 MA's), (62, 119202), (91, 119334), (96, 119352), (112, 119412), (137, 119520), (141, 119544), (157, 119607), (159, 119613),

Gene: McWolfish_212 Start: 120006, Stop: 120461, Start Num: 53

Candidate Starts for McWolfish_212:

(21, 119892), (29, 119955), (34, 119973), (Start: 53 @120006 has 184 MA's), (62, 120024), (91, 120156), (96, 120174), (112, 120234), (137, 120342), (141, 120366), (157, 120429), (159, 120435),

Gene: Megamind_212 Start: 120297, Stop: 120752, Start Num: 53

Candidate Starts for Megamind_212:

(21, 120183), (29, 120246), (34, 120264), (Start: 53 @120297 has 184 MA's), (62, 120315), (91, 120447), (96, 120465), (112, 120525), (137, 120633), (141, 120657), (157, 120720), (159, 120726),

Gene: Melpomini_210 Start: 119082, Stop: 119537, Start Num: 53

Candidate Starts for Melpomini_210:

(21, 118968), (29, 119031), (34, 119049), (Start: 53 @119082 has 184 MA's), (62, 119100), (91, 119232), (96, 119250), (112, 119310), (137, 119418), (141, 119442), (157, 119505), (159, 119511),

Gene: MichelleMyBell_49 Start: 33179, Stop: 33610, Start Num: 36

Candidate Starts for MichelleMyBell_49:

(17, 33071), (Start: 36 @33179 has 2 MA's), (58, 33215), (60, 33218), (98, 33347), (103, 33362), (107, 33383), (128, 33461), (136, 33503), (140, 33527), (144, 33539), (153, 33581),

Gene: MidnightRain_92 Start: 49545, Stop: 49970, Start Num: 49

Candidate Starts for MidnightRain_92:

(33, 49515), (Start: 49 @49545 has 37 MA's), (Start: 56 @49557 has 2 MA's), (62, 49572), (66, 49602), (67, 49608), (74, 49632), (88, 49680), (116, 49791), (154, 49935),

Gene: MikeLiesIn_217 Start: 121433, Stop: 121888, Start Num: 53

Candidate Starts for MikeLiesIn_217:

(21, 121319), (29, 121382), (34, 121400), (Start: 53 @121433 has 184 MA's), (62, 121451), (91, 121583), (96, 121601), (112, 121661), (137, 121769), (141, 121793), (157, 121856), (159, 121862),

Gene: Mikro_211 Start: 121982, Stop: 122437, Start Num: 53

Candidate Starts for Mikro_211:

(21, 121868), (29, 121931), (34, 121949), (Start: 53 @121982 has 184 MA's), (62, 122000), (91, 122132), (96, 122150), (112, 122210), (137, 122318), (141, 122342), (157, 122405), (159, 122411),

Gene: MoMoMixon_213 Start: 120472, Stop: 120927, Start Num: 53

Candidate Starts for MoMoMixon_213:

(21, 120358), (29, 120421), (34, 120439), (Start: 53 @120472 has 184 MA's), (62, 120490), (91, 120622), (96, 120640), (112, 120700), (137, 120808), (141, 120832), (157, 120895), (159, 120901),

Gene: Moby_211 Start: 118454, Stop: 118909, Start Num: 53

Candidate Starts for Moby_211:

(21, 118340), (29, 118403), (34, 118421), (Start: 53 @118454 has 184 MA's), (62, 118472), (91, 118604), (96, 118622), (112, 118682), (137, 118790), (141, 118814), (157, 118877), (159, 118883),

Gene: Moiqah_210 Start: 118431, Stop: 118886, Start Num: 53

Candidate Starts for Moiqah_210:

(21, 118317), (29, 118380), (34, 118398), (Start: 53 @118431 has 184 MA's), (62, 118449), (91, 118581), (96, 118599), (112, 118659), (137, 118767), (141, 118791), (157, 118854), (159, 118860),

Gene: Momo_216 Start: 119548, Stop: 120003, Start Num: 53

Candidate Starts for Momo_216:

(21, 119434), (29, 119497), (34, 119515), (Start: 53 @119548 has 184 MA's), (62, 119566), (91, 119698), (96, 119716), (112, 119776), (137, 119884), (141, 119908), (157, 119971), (159, 119977),

Gene: Montpel_213 Start: 120651, Stop: 121106, Start Num: 53

Candidate Starts for Montpel_213:

(21, 120537), (29, 120600), (34, 120618), (Start: 53 @120651 has 184 MA's), (62, 120669), (91, 120801), (96, 120819), (112, 120879), (137, 120987), (141, 121011), (157, 121074), (159, 121080),

Gene: Morizzled23_212 Start: 118915, Stop: 119370, Start Num: 53

Candidate Starts for Morizzled23_212:

(21, 118801), (29, 118864), (34, 118882), (Start: 53 @118915 has 184 MA's), (62, 118933), (91, 119065), (96, 119083), (112, 119143), (137, 119251), (141, 119275), (157, 119338), (159, 119344),

Gene: MurphyJoseph_84 Start: 47041, Stop: 47463, Start Num: 49

Candidate Starts for MurphyJoseph_84:

(Start: 49 @47041 has 37 MA's), (Start: 56 @47050 has 2 MA's), (62, 47065), (66, 47095), (67, 47101), (74, 47125), (101, 47215), (116, 47284), (154, 47428),

Gene: Naija_216 Start: 120251, Stop: 120706, Start Num: 53

Candidate Starts for Naija_216:

(21, 120137), (29, 120200), (34, 120218), (Start: 53 @120251 has 184 MA's), (62, 120269), (91, 120401), (96, 120419), (112, 120479), (137, 120587), (141, 120611), (157, 120674), (159, 120680),

Gene: Napoleon13_212 Start: 119279, Stop: 119734, Start Num: 53

Candidate Starts for Napoleon13_212:

(21, 119165), (29, 119228), (34, 119246), (Start: 53 @119279 has 184 MA's), (62, 119297), (91, 119429), (96, 119447), (112, 119507), (137, 119615), (141, 119639), (157, 119702), (159, 119708),

Gene: Nappy_216 Start: 120952, Stop: 121407, Start Num: 53

Candidate Starts for Nappy_216:

(21, 120838), (29, 120901), (34, 120919), (Start: 53 @120952 has 184 MA's), (62, 120970), (91, 121102), (96, 121120), (112, 121180), (137, 121288), (141, 121312), (157, 121375), (159, 121381),

Gene: Naval22_220 Start: 122028, Stop: 122483, Start Num: 53

Candidate Starts for Naval22_220:

(21, 121914), (29, 121977), (34, 121995), (Start: 53 @122028 has 184 MA's), (62, 122046), (91, 122178), (96, 122196), (112, 122256), (137, 122364), (141, 122388), (157, 122451), (159, 122457),

Gene: NedWong_214 Start: 120684, Stop: 121139, Start Num: 53

Candidate Starts for NedWong_214:

(21, 120570), (29, 120633), (34, 120651), (Start: 53 @120684 has 184 MA's), (62, 120702), (91, 120834), (96, 120852), (112, 120912), (137, 121020), (141, 121044), (157, 121107), (159, 121113),

Gene: Neville_76 Start: 48231, Stop: 48671, Start Num: 52

Candidate Starts for Neville_76:

(Start: 50 @48225 has 4 MA's), (Start: 52 @48231 has 2 MA's), (59, 48240), (86, 48333), (92, 48360), (106, 48402), (111, 48423), (112, 48426), (114, 48444), (128, 48489), (141, 48558), (143, 48564), (145, 48570), (146, 48573), (148, 48582), (157, 48621),

Gene: NewKitty_87 Start: 49196, Stop: 49621, Start Num: 49

Candidate Starts for NewKitty_87:

(19, 49091), (Start: 49 @49196 has 37 MA's), (Start: 56 @49208 has 2 MA's), (66, 49253), (67, 49259), (74, 49283), (154, 49586),

Gene: Ngannou_212 Start: 118530, Stop: 118985, Start Num: 53

Candidate Starts for Ngannou_212:

(21, 118416), (29, 118479), (34, 118497), (Start: 53 @118530 has 184 MA's), (62, 118548), (91, 118680), (96, 118698), (112, 118758), (137, 118866), (141, 118890), (157, 118953), (159, 118959),

Gene: Niblet_42 Start: 29318, Stop: 29785, Start Num: 48

Candidate Starts for Niblet_42:

(Start: 48 @29318 has 39 MA's), (Start: 63 @29354 has 1 MA's), (81, 29414), (107, 29516), (112, 29534), (123, 29594), (131, 29639), (138, 29666), (141, 29690), (143, 29696), (155, 29747), (164, 29774),

Gene: Nidhogg_216 Start: 121077, Stop: 121532, Start Num: 53

Candidate Starts for Nidhogg_216:

(21, 120963), (29, 121026), (34, 121044), (Start: 53 @121077 has 184 MA's), (62, 121095), (91, 121227), (96, 121245), (112, 121305), (137, 121413), (141, 121437), (157, 121500), (159, 121506),

Gene: NoSwimming_54 Start: 38737, Stop: 39144, Start Num: 50

Candidate Starts for NoSwimming_54:

(Start: 50 @38737 has 4 MA's), (74, 38809),

Gene: NoodleTree_221 Start: 120984, Stop: 121439, Start Num: 53

Candidate Starts for NoodleTree_221:

(21, 120870), (29, 120933), (34, 120951), (Start: 53 @120984 has 184 MA's), (62, 121002), (91, 121134), (96, 121152), (112, 121212), (137, 121320), (141, 121344), (157, 121407), (159, 121413),

Gene: Norm_215 Start: 120986, Stop: 121441, Start Num: 53

Candidate Starts for Norm_215:

(21, 120872), (29, 120935), (34, 120953), (Start: 53 @120986 has 184 MA's), (62, 121004), (91, 121136), (96, 121154), (112, 121214), (137, 121322), (141, 121346), (157, 121409), (159, 121415),

Gene: NuevoMundo_218 Start: 121545, Stop: 122000, Start Num: 53

Candidate Starts for NuevoMundo_218:

(21, 121431), (29, 121494), (34, 121512), (Start: 53 @121545 has 184 MA's), (62, 121563), (91, 121695), (96, 121713), (112, 121773), (137, 121881), (141, 121905), (157, 121968), (159, 121974),

Gene: Nyilah_93 Start: 48310, Stop: 48735, Start Num: 49

Candidate Starts for Nyilah_93:

(3, 47962), (15, 48157), (Start: 49 @48310 has 37 MA's), (Start: 56 @48322 has 2 MA's), (66, 48367), (67, 48373), (74, 48397), (88, 48445), (101, 48487), (154, 48700),

Gene: Octobien14_83 Start: 49218, Stop: 49616, Start Num: 53

Candidate Starts for Octobien14_83:

(32, 49179), (Start: 53 @49218 has 184 MA's), (61, 49230), (62, 49236), (78, 49290), (93, 49344), (104, 49371), (109, 49398), (112, 49407), (114, 49425), (128, 49467), (130, 49476), (153, 49587),

Gene: Oppalora_44 Start: 28377, Stop: 28811, Start Num: 63

Candidate Starts for Oppalora_44:

(Start: 48 @28341 has 39 MA's), (Start: 63 @28377 has 1 MA's), (84, 28458), (90, 28482), (96, 28506), (105, 28530), (107, 28542), (109, 28551), (112, 28560), (117, 28596), (125, 28632), (128, 28644), (131, 28665), (133, 28677), (142, 28719), (153, 28767), (156, 28776),

Gene: OrediggerDelux_211 Start: 121216, Stop: 121671, Start Num: 53

Candidate Starts for OrediggerDelux_211:

(21, 121102), (29, 121165), (34, 121183), (Start: 53 @121216 has 184 MA's), (62, 121234), (91, 121366), (96, 121384), (112, 121444), (137, 121552), (141, 121576), (157, 121639), (159, 121645),

Gene: ParkTD_214 Start: 120548, Stop: 121003, Start Num: 53

Candidate Starts for ParkTD_214:

(21, 120434), (29, 120497), (34, 120515), (Start: 53 @120548 has 184 MA's), (62, 120566), (91, 120698), (96, 120716), (112, 120776), (137, 120884), (141, 120908), (157, 120971), (159, 120977),

Gene: Patter_216 Start: 119562, Stop: 120017, Start Num: 53

Candidate Starts for Patter_216:

(21, 119448), (29, 119511), (34, 119529), (Start: 53 @119562 has 184 MA's), (62, 119580), (91, 119712), (96, 119730), (112, 119790), (137, 119898), (141, 119922), (157, 119985), (159, 119991),

Gene: Pelletreau_52 Start: 29743, Stop: 30210, Start Num: 48

Candidate Starts for Pelletreau_52:

(Start: 48 @29743 has 39 MA's), (Start: 63 @29779 has 1 MA's), (81, 29839), (96, 29905), (107, 29941), (112, 29959), (123, 30019), (131, 30064), (138, 30091), (141, 30115), (143, 30121), (155, 30172), (164, 30199),

Gene: Persistence_79 Start: 45632, Stop: 46033, Start Num: 50

Candidate Starts for Persistence_79:

(41, 45617), (Start: 50 @45632 has 4 MA's), (74, 45707), (83, 45716), (151, 45992),

Gene: PharkleMinkus_217 Start: 119111, Stop: 119566, Start Num: 53

Candidate Starts for PharkleMinkus_217:

(21, 118997), (29, 119060), (34, 119078), (Start: 53 @119111 has 184 MA's), (62, 119129), (91, 119261), (96, 119279), (112, 119339), (137, 119447), (141, 119471), (157, 119534), (159, 119540),

Gene: Phlegm_219 Start: 120251, Stop: 120706, Start Num: 53

Candidate Starts for Phlegm_219:

(21, 120137), (29, 120200), (34, 120218), (Start: 53 @120251 has 184 MA's), (62, 120269), (91, 120401), (96, 120419), (112, 120479), (137, 120587), (141, 120611), (157, 120674), (159, 120680),

Gene: PhluffyCoco_45 Start: 28438, Stop: 28911, Start Num: 48

Candidate Starts for PhluffyCoco_45:

(Start: 48 @28438 has 39 MA's), (Start: 63 @28474 has 1 MA's), (84, 28555), (90, 28579), (107, 28639), (112, 28657), (131, 28765), (133, 28777), (155, 28873),

Gene: Phox_216 Start: 120213, Stop: 120668, Start Num: 53

Candidate Starts for Phox_216:

(21, 120099), (29, 120162), (34, 120180), (Start: 53 @120213 has 184 MA's), (62, 120231), (91, 120363), (96, 120381), (112, 120441), (137, 120549), (141, 120573), (157, 120636), (159, 120642),

Gene: Phrank15_92 Start: 49189, Stop: 49614, Start Num: 49

Candidate Starts for Phrank15_92:

(Start: 49 @49189 has 37 MA's), (Start: 56 @49201 has 2 MA's), (62, 49216), (66, 49246), (67, 49252), (74, 49276), (101, 49366), (106, 49384), (113, 49423), (116, 49435), (154, 49579),

Gene: Phusco_213 Start: 119083, Stop: 119538, Start Num: 53

Candidate Starts for Phusco_213:

(21, 118969), (29, 119032), (34, 119050), (Start: 53 @119083 has 184 MA's), (62, 119101), (91, 119233), (96, 119251), (112, 119311), (137, 119419), (141, 119443), (157, 119506), (159, 119512),

Gene: Pier_216 Start: 121090, Stop: 121545, Start Num: 53

Candidate Starts for Pier_216:

(21, 120976), (29, 121039), (34, 121057), (Start: 53 @121090 has 184 MA's), (62, 121108), (91, 121240), (96, 121258), (112, 121318), (137, 121426), (141, 121450), (157, 121513), (159, 121519),

Gene: Pigu_64 Start: 34020, Stop: 34448, Start Num: 40

Candidate Starts for Pigu_64:

(11, 33813), (40, 34020), (Start: 49 @34035 has 37 MA's), (83, 34131), (106, 34221), (151, 34407),

Gene: Pinkcreek_199 Start: 118466, Stop: 118921, Start Num: 53

Candidate Starts for Pinkcreek_199:

(21, 118352), (29, 118415), (34, 118433), (Start: 53 @118466 has 184 MA's), (62, 118484), (91, 118616), (96, 118634), (112, 118694), (137, 118802), (141, 118826), (157, 118889), (159, 118895),

Gene: Pio_223 Start: 122282, Stop: 122737, Start Num: 53

Candidate Starts for Pio_223:

(21, 122168), (29, 122231), (34, 122249), (Start: 53 @122282 has 184 MA's), (62, 122300), (91, 122432), (96, 122450), (112, 122510), (137, 122618), (141, 122642), (157, 122705), (159, 122711),

Gene: Pivoine_216 Start: 120251, Stop: 120706, Start Num: 53

Candidate Starts for Pivoine_216:

(21, 120137), (29, 120200), (34, 120218), (Start: 53 @120251 has 184 MA's), (62, 120269), (91, 120401), (96, 120419), (112, 120479), (137, 120587), (141, 120611), (157, 120674), (159, 120680),

Gene: Pleione_219 Start: 121026, Stop: 121481, Start Num: 53

Candidate Starts for Pleione_219:

(21, 120912), (29, 120975), (34, 120993), (Start: 53 @121026 has 184 MA's), (62, 121044), (91, 121176), (96, 121194), (112, 121254), (137, 121362), (141, 121386), (157, 121449), (159, 121455),

Gene: Primadonna_210 Start: 119912, Stop: 120367, Start Num: 53

Candidate Starts for Primadonna_210:

(21, 119798), (29, 119861), (34, 119879), (Start: 53 @119912 has 184 MA's), (62, 119930), (91, 120062), (96, 120080), (112, 120140), (137, 120248), (141, 120272), (157, 120335), (159, 120341),

Gene: Pupusa_219 Start: 121590, Stop: 122045, Start Num: 53

Candidate Starts for Pupusa_219:

(1, 121071), (21, 121476), (29, 121539), (34, 121557), (Start: 53 @121590 has 184 MA's), (62, 121608), (91, 121740), (96, 121758), (112, 121818), (137, 121926), (141, 121950), (157, 122013), (159, 122019),

Gene: PurduePete_215 Start: 121254, Stop: 121709, Start Num: 53

Candidate Starts for PurduePete_215:

(21, 121140), (29, 121203), (34, 121221), (Start: 53 @121254 has 184 MA's), (62, 121272), (91, 121404), (96, 121422), (112, 121482), (137, 121590), (141, 121614), (157, 121677), (159, 121683),

Gene: Purky_56 Start: 37685, Stop: 38155, Start Num: 35

Candidate Starts for Purky_56:

(Start: 35 @37685 has 2 MA's), (62, 37736), (68, 37775), (76, 37805), (97, 37883), (111, 37934), (133, 38033), (137, 38045), (139, 38048), (143, 38075), (155, 38126), (157, 38132), (161, 38141),

Gene: QBert_207 Start: 118614, Stop: 119069, Start Num: 53

Candidate Starts for QBert_207:

(21, 118500), (29, 118563), (34, 118581), (Start: 53 @118614 has 184 MA's), (62, 118632), (91, 118764), (96, 118782), (112, 118842), (137, 118950), (141, 118974), (157, 119037), (159, 119043),

Gene: Quasimodo_217 Start: 119884, Stop: 120339, Start Num: 53

Candidate Starts for Quasimodo_217:

(21, 119770), (29, 119833), (34, 119851), (Start: 53 @119884 has 184 MA's), (62, 119902), (91, 120034), (96, 120052), (112, 120112), (137, 120220), (141, 120244), (157, 120307), (159, 120313),

Gene: Rabinovish_208 Start: 120159, Stop: 120614, Start Num: 53

Candidate Starts for Rabinovish_208:

(21, 120045), (29, 120108), (34, 120126), (Start: 53 @120159 has 184 MA's), (62, 120177), (91, 120309), (96, 120327), (112, 120387), (137, 120495), (141, 120519), (157, 120582), (159, 120588),

Gene: RadFad_91 Start: 48709, Stop: 49134, Start Num: 49

Candidate Starts for RadFad_91:

(33, 48679), (Start: 49 @48709 has 37 MA's), (Start: 56 @48721 has 2 MA's), (62, 48736), (66, 48766), (67, 48772), (74, 48796), (88, 48844), (101, 48886), (116, 48955), (154, 49099),

Gene: Rahel_216 Start: 119986, Stop: 120441, Start Num: 53

Candidate Starts for Rahel_216:

(21, 119872), (29, 119935), (34, 119953), (Start: 53 @119986 has 184 MA's), (62, 120004), (91, 120136), (96, 120154), (112, 120214), (137, 120322), (141, 120346), (157, 120409), (159, 120415),

Gene: Raphaella_86 Start: 47326, Stop: 47757, Start Num: 49

Candidate Starts for Raphaella_86:

(33, 47296), (Start: 49 @47326 has 37 MA's), (Start: 56 @47338 has 2 MA's), (62, 47353), (66, 47383), (67, 47389), (74, 47413), (88, 47461), (116, 47572), (154, 47716),

Gene: Raqqa_86 Start: 48107, Stop: 48511, Start Num: 51

Candidate Starts for Raqqa_86:

(16, 47966), (Start: 51 @48107 has 4 MA's), (67, 48164), (73, 48182), (74, 48188), (101, 48278), (106, 48296), (129, 48380), (141, 48431), (154, 48476),

Gene: Rattail_45 Start: 28560, Stop: 28997, Start Num: 63

Candidate Starts for Rattail_45:

(Start: 48 @28524 has 39 MA's), (Start: 63 @28560 has 1 MA's), (84, 28641), (90, 28665), (107, 28725), (112, 28743), (131, 28851), (133, 28863), (155, 28959),

Gene: RedFox_45 Start: 28437, Stop: 28910, Start Num: 48

Candidate Starts for RedFox_45:

(Start: 48 @28437 has 39 MA's), (Start: 63 @28473 has 1 MA's), (84, 28554), (90, 28578), (107, 28638), (112, 28656), (131, 28764), (133, 28776), (155, 28872),

Gene: Renna12_44 Start: 28294, Stop: 28767, Start Num: 48

Candidate Starts for Renna12_44:

(Start: 48 @28294 has 39 MA's), (Start: 63 @28330 has 1 MA's), (84, 28411), (90, 28435), (107, 28495), (112, 28513), (128, 28600), (131, 28621), (133, 28633), (155, 28729),

Gene: Richie_89 Start: 49559, Stop: 49984, Start Num: 49

Candidate Starts for Richie_89:

(33, 49529), (Start: 49 @49559 has 37 MA's), (Start: 56 @49571 has 2 MA's), (62, 49586), (66, 49616), (67, 49622), (74, 49646), (101, 49736), (154, 49949),

Gene: Rizal_207 Start: 118504, Stop: 118959, Start Num: 53

Candidate Starts for Rizal_207:

(21, 118390), (29, 118453), (34, 118471), (Start: 53 @118504 has 184 MA's), (62, 118522), (91, 118654), (96, 118672), (112, 118732), (137, 118840), (141, 118864), (157, 118927), (159, 118933),

Gene: RoMag_210 Start: 120297, Stop: 120752, Start Num: 53

Candidate Starts for RoMag_210:

(21, 120183), (29, 120246), (34, 120264), (Start: 53 @120297 has 184 MA's), (62, 120315), (91, 120447), (96, 120465), (112, 120525), (137, 120633), (141, 120657), (157, 120720), (159, 120726),

Gene: Rocha_212 Start: 119740, Stop: 120195, Start Num: 53

Candidate Starts for Rocha_212:

(21, 119626), (29, 119689), (34, 119707), (Start: 53 @119740 has 184 MA's), (62, 119758), (91, 119890), (96, 119908), (112, 119968), (137, 120076), (141, 120100), (157, 120163), (159, 120169),

Gene: Ronan_211 Start: 118689, Stop: 119144, Start Num: 53

Candidate Starts for Ronan_211:

(21, 118575), (29, 118638), (34, 118656), (Start: 53 @118689 has 184 MA's), (62, 118707), (91, 118839), (96, 118857), (112, 118917), (137, 119025), (141, 119049), (157, 119112), (159, 119118),

Gene: Rooter_70 Start: 35994, Stop: 36416, Start Num: 49

Candidate Starts for Rooter_70:

(Start: 49 @35994 has 37 MA's), (83, 36090), (141, 36330), (151, 36366),

Gene: Roots515_217 Start: 121805, Stop: 122260, Start Num: 53

Candidate Starts for Roots515_217:

(21, 121691), (29, 121754), (34, 121772), (Start: 53 @121805 has 184 MA's), (62, 121823), (91, 121955), (96, 121973), (112, 122033), (137, 122141), (141, 122165), (157, 122228), (159, 122234),

Gene: Ruchi_41 Start: 28118, Stop: 28588, Start Num: 48

Candidate Starts for Ruchi_41:

(Start: 48 @28118 has 39 MA's), (Start: 63 @28154 has 1 MA's), (64, 28160), (90, 28256), (100, 28295), (107, 28316), (112, 28334), (117, 28370), (138, 28469), (141, 28493), (147, 28511), (157, 28556), (164, 28577),

Gene: SVoro_211 Start: 120599, Stop: 121054, Start Num: 53

Candidate Starts for SVoro_211:

(21, 120485), (29, 120548), (34, 120566), (Start: 53 @120599 has 184 MA's), (62, 120617), (91, 120749), (96, 120767), (112, 120827), (137, 120935), (141, 120959), (157, 121022), (159, 121028),

Gene: Sakai_82 Start: 47520, Stop: 47945, Start Num: 49

Candidate Starts for Sakai_82:

(Start: 49 @47520 has 37 MA's), (Start: 56 @47532 has 2 MA's), (62, 47547), (66, 47577), (67, 47583), (119, 47775), (126, 47787), (154, 47910),

Gene: Salacia_215 Start: 120389, Stop: 120844, Start Num: 53

Candidate Starts for Salacia_215:

(21, 120275), (29, 120338), (34, 120356), (Start: 53 @120389 has 184 MA's), (62, 120407), (91, 120539), (96, 120557), (112, 120617), (137, 120725), (141, 120749), (157, 120812), (159, 120818),

Gene: Sarge_59 Start: 33281, Stop: 33694, Start Num: 48

Candidate Starts for Sarge_59:

(42, 33269), (Start: 48 @33281 has 39 MA's), (83, 33377), (106, 33467), (151, 33653),

Gene: Satrap_85 Start: 47810, Stop: 48229, Start Num: 56

Candidate Starts for Satrap_85:

(33, 47771), (Start: 49 @47801 has 37 MA's), (Start: 56 @47810 has 2 MA's), (62, 47825), (66, 47855), (74, 47885), (101, 47975), (121, 48056), (154, 48188),

Gene: Sauce_211 Start: 119212, Stop: 119667, Start Num: 53

Candidate Starts for Sauce_211:

(1, 118693), (21, 119098), (29, 119161), (34, 119179), (Start: 53 @119212 has 184 MA's), (62, 119230), (91, 119362), (96, 119380), (112, 119440), (137, 119548), (141, 119572), (157, 119635), (159, 119641),

Gene: Scotia_53 Start: 37733, Stop: 38152, Start Num: 50

Candidate Starts for Scotia_53:

(Start: 50 @37733 has 4 MA's), (83, 37826), (110, 37934),

Gene: ScottMcG_209 Start: 119282, Stop: 119737, Start Num: 53

Candidate Starts for ScottMcG_209:

(21, 119168), (29, 119231), (34, 119249), (Start: 53 @119282 has 184 MA's), (62, 119300), (91, 119432), (96, 119450), (112, 119510), (137, 119618), (141, 119642), (157, 119705), (159, 119711),

Gene: Seahorse_92 Start: 52725, Stop: 53156, Start Num: 49

Candidate Starts for Seahorse_92:

(19, 52620), (Start: 49 @52725 has 37 MA's), (Start: 56 @52737 has 2 MA's), (62, 52752), (66, 52782), (67, 52788), (74, 52812), (154, 53115),

Gene: Sebata_216 Start: 120719, Stop: 121174, Start Num: 53

Candidate Starts for Sebata_216:

(21, 120605), (29, 120668), (34, 120686), (Start: 53 @120719 has 184 MA's), (62, 120737), (91, 120869), (96, 120887), (112, 120947), (137, 121055), (141, 121079), (157, 121142), (159, 121148),

Gene: Sejanus_66 Start: 51688, Stop: 52152, Start Num: 35

Candidate Starts for Sejanus_66:

(Start: 35 @51688 has 2 MA's), (62, 51739), (68, 51778), (76, 51808), (97, 51886), (111, 51937), (133, 52036), (137, 52048), (139, 52051), (143, 52078), (155, 52129), (161, 52144),

Gene: Sephiroth_83 Start: 50078, Stop: 50476, Start Num: 53

Candidate Starts for Sephiroth_83:

(Start: 53 @50078 has 184 MA's), (61, 50090), (62, 50096), (78, 50150), (93, 50204), (104, 50231), (112, 50267), (114, 50285), (128, 50327), (130, 50336), (131, 50348), (153, 50447),

Gene: Shaqnato_206 Start: 119420, Stop: 119875, Start Num: 53

Candidate Starts for Shaqnato_206:

(21, 119306), (29, 119369), (34, 119387), (Start: 53 @119420 has 184 MA's), (62, 119438), (91, 119570), (96, 119588), (112, 119648), (137, 119756), (141, 119780), (157, 119843), (159, 119849),

Gene: Shelob_216 Start: 122160, Stop: 122615, Start Num: 53

Candidate Starts for Shelob_216:

(21, 122046), (29, 122109), (34, 122127), (Start: 53 @122160 has 184 MA's), (62, 122178), (91, 122310), (96, 122328), (112, 122388), (137, 122496), (141, 122520), (157, 122583), (159, 122589),

Gene: Shen_42 Start: 27844, Stop: 28311, Start Num: 48

Candidate Starts for Shen_42:

(Start: 48 @27844 has 39 MA's), (Start: 63 @27880 has 1 MA's), (81, 27940), (96, 28006), (107, 28042), (112, 28060), (123, 28120), (138, 28192), (141, 28216), (143, 28222), (155, 28273), (162, 28294), (164, 28300),

Gene: ShiaLabeouf_212 Start: 119194, Stop: 119649, Start Num: 53

Candidate Starts for ShiaLabeouf_212:

(21, 119080), (29, 119143), (34, 119161), (Start: 53 @119194 has 184 MA's), (62, 119212), (91, 119344), (96, 119362), (112, 119422), (137, 119530), (141, 119554), (157, 119617), (159, 119623),

Gene: Shifa_192 Start: 118778, Stop: 119233, Start Num: 53

Candidate Starts for Shifa_192:

(21, 118664), (29, 118727), (34, 118745), (Start: 53 @118778 has 184 MA's), (62, 118796), (91, 118928), (96, 118946), (112, 119006), (137, 119114), (141, 119138), (157, 119201), (159, 119207),

Gene: Shnickers_213 Start: 119258, Stop: 119713, Start Num: 53

Candidate Starts for Shnickers_213:

(21, 119144), (29, 119207), (34, 119225), (Start: 53 @119258 has 184 MA's), (62, 119276), (91, 119408), (96, 119426), (112, 119486), (137, 119594), (141, 119618), (157, 119681), (159, 119687),

Gene: Shoya_62 Start: 35352, Stop: 35765, Start Num: 48

Candidate Starts for Shoya_62:

(24, 35286), (Start: 48 @35352 has 39 MA's), (83, 35448), (106, 35538), (141, 35688),

Gene: Shrimp_217 Start: 121315, Stop: 121770, Start Num: 53

Candidate Starts for Shrimp_217:

(21, 121201), (29, 121264), (34, 121282), (Start: 53 @121315 has 184 MA's), (62, 121333), (91, 121465), (96, 121483), (112, 121543), (137, 121651), (141, 121675), (157, 121738), (159, 121744),

Gene: Shukran_82 Start: 46326, Stop: 46727, Start Num: 50

Candidate Starts for Shukran_82:

(41, 46311), (Start: 50 @46326 has 4 MA's), (70, 46386), (74, 46401), (83, 46410), (89, 46443), (151, 46686),

Gene: SilverDipper_219 Start: 120807, Stop: 121262, Start Num: 53

Candidate Starts for SilverDipper_219:

(21, 120693), (29, 120756), (34, 120774), (Start: 53 @120807 has 184 MA's), (62, 120825), (91, 120957), (96, 120975), (112, 121035), (137, 121143), (141, 121167), (157, 121230), (159, 121236),

Gene: SmallFry_215 Start: 119352, Stop: 119807, Start Num: 53

Candidate Starts for SmallFry_215:

(21, 119238), (29, 119301), (34, 119319), (Start: 53 @119352 has 184 MA's), (62, 119370), (91, 119502), (96, 119520), (112, 119580), (137, 119688), (141, 119712), (157, 119775), (159, 119781),

Gene: SoilZilla_210 Start: 119907, Stop: 120362, Start Num: 53

Candidate Starts for SoilZilla_210:

(21, 119793), (29, 119856), (34, 119874), (Start: 53 @119907 has 184 MA's), (62, 119925), (91, 120057), (96, 120075), (112, 120135), (137, 120243), (141, 120267), (157, 120330), (159, 120336),

Gene: SonDevVon_93 Start: 48390, Stop: 48815, Start Num: 49

Candidate Starts for SonDevVon_93:

(19, 48285), (Start: 49 @48390 has 37 MA's), (Start: 56 @48402 has 2 MA's), (62, 48417), (66, 48447), (67, 48453), (74, 48477), (119, 48645), (126, 48657), (135, 48702), (154, 48780),

Gene: Spec_210 Start: 119543, Stop: 119998, Start Num: 53

Candidate Starts for Spec_210:

(21, 119429), (26, 119459), (29, 119492), (34, 119510), (Start: 53 @119543 has 184 MA's), (62, 119561), (91, 119693), (96, 119711), (112, 119771), (137, 119879), (141, 119903), (157, 119966), (159, 119972),

Gene: Specks_219 Start: 120668, Stop: 121123, Start Num: 53

Candidate Starts for Specks_219:

(21, 120554), (29, 120617), (34, 120635), (Start: 53 @120668 has 184 MA's), (62, 120686), (91, 120818), (96, 120836), (112, 120896), (137, 121004), (141, 121028), (157, 121091), (159, 121097),

Gene: SpicyFrank_87 Start: 47815, Stop: 48240, Start Num: 49

Candidate Starts for SpicyFrank_87:

(Start: 49 @47815 has 37 MA's), (Start: 56 @47827 has 2 MA's), (62, 47842), (66, 47872), (67, 47878), (74, 47902), (95, 47974), (101, 47992), (154, 48205),

Gene: Splinter_57 Start: 38151, Stop: 38588, Start Num: 38

Candidate Starts for Splinter_57:

(Start: 38 @38151 has 5 MA's), (45, 38160), (Start: 46 @38163 has 1 MA's), (62, 38187), (78, 38241), (85, 38262), (106, 38343), (112, 38367), (124, 38412),

Gene: Sporco_87 Start: 49153, Stop: 49578, Start Num: 49

Candidate Starts for Sporco_87:

(19, 49048), (Start: 49 @49153 has 37 MA's), (Start: 56 @49165 has 2 MA's), (62, 49180), (66, 49210), (67, 49216), (74, 49240), (119, 49408), (126, 49420), (135, 49465), (154, 49543),

Gene: Sprinklers_213 Start: 119910, Stop: 120365, Start Num: 53

Candidate Starts for Sprinklers_213:

(21, 119796), (29, 119859), (34, 119877), (Start: 53 @119910 has 184 MA's), (62, 119928), (91, 120060), (96, 120078), (112, 120138), (137, 120246), (141, 120270), (157, 120333), (159, 120339),

Gene: Spud_209 Start: 119622, Stop: 120077, Start Num: 53

Candidate Starts for Spud_209:

(21, 119508), (29, 119571), (34, 119589), (Start: 53 @119622 has 184 MA's), (62, 119640), (91, 119772), (96, 119790), (112, 119850), (137, 119958), (141, 119982), (157, 120045), (159, 120051),

Gene: Squiddly_91 Start: 53227, Stop: 53721, Start Num: 49

Candidate Starts for Squiddly_91:

(Start: 49 @53227 has 37 MA's), (69, 53281), (106, 53386), (111, 53407), (112, 53410), (124, 53455), (136, 53512), (140, 53536), (141, 53539), (143, 53545), (144, 53548), (157, 53602), (167, 53650),

Gene: SrishMeg2525_212 Start: 120786, Stop: 121241, Start Num: 53

Candidate Starts for SrishMeg2525_212:

(21, 120672), (29, 120735), (34, 120753), (Start: 53 @120786 has 184 MA's), (62, 120804), (91, 120936), (96, 120954), (112, 121014), (137, 121122), (141, 121146), (157, 121209), (159, 121215),

Gene: StephanieG_211 Start: 120820, Stop: 121275, Start Num: 53

Candidate Starts for StephanieG_211:

(21, 120706), (29, 120769), (34, 120787), (Start: 53 @120820 has 184 MA's), (62, 120838), (91, 120970), (96, 120988), (112, 121048), (137, 121156), (141, 121180), (157, 121243), (159, 121249),

Gene: StuartMinion_37 Start: 25394, Stop: 25864, Start Num: 48

Candidate Starts for StuartMinion_37:

(Start: 48 @25394 has 39 MA's), (Start: 63 @25430 has 1 MA's), (90, 25535), (96, 25559), (107, 25595), (109, 25604), (112, 25613), (125, 25685), (128, 25697), (131, 25718), (133, 25730), (142, 25772), (153, 25820), (156, 25829),

Gene: Stubby_199 Start: 118669, Stop: 119124, Start Num: 53

Candidate Starts for Stubby_199:

(21, 118555), (29, 118618), (34, 118636), (Start: 53 @118669 has 184 MA's), (62, 118687), (91, 118819), (96, 118837), (112, 118897), (137, 119005), (141, 119029), (157, 119092), (159, 119098),

Gene: StubbySaigey_220 Start: 120341, Stop: 120796, Start Num: 53

Candidate Starts for StubbySaigey_220:

(21, 120227), (29, 120290), (34, 120308), (Start: 53 @120341 has 184 MA's), (62, 120359), (91, 120491), (96, 120509), (112, 120569), (137, 120677), (141, 120701), (157, 120764), (159, 120770),

Gene: Substance289_212 Start: 119400, Stop: 119855, Start Num: 53

Candidate Starts for Substance289_212:

(21, 119286), (29, 119349), (34, 119367), (Start: 53 @119400 has 184 MA's), (62, 119418), (91, 119550), (96, 119568), (112, 119628), (137, 119736), (141, 119760), (157, 119823), (159, 119829),

Gene: Sweetums_44 Start: 26011, Stop: 25589, Start Num: 54

Candidate Starts for Sweetums_44:

(Start: 54 @26011 has 5 MA's), (72, 25945), (92, 25876), (95, 25864), (109, 25813), (112, 25804), (139, 25699),

Gene: Syleon_86 Start: 50016, Stop: 50414, Start Num: 53

Candidate Starts for Syleon_86:

(Start: 53 @50016 has 184 MA's), (61, 50028), (62, 50034), (78, 50088), (93, 50142), (104, 50169), (112, 50205), (114, 50223), (128, 50265), (130, 50274), (131, 50286), (153, 50385),

Gene: TZGordon_58 Start: 37043, Stop: 37483, Start Num: 38

Candidate Starts for TZGordon_58:

(Start: 38 @37043 has 5 MA's), (Start: 48 @37058 has 39 MA's), (62, 37082), (78, 37136), (106, 37238), (112, 37262), (124, 37307),

Gene: Tainan_216 Start: 119687, Stop: 120142, Start Num: 53

Candidate Starts for Tainan_216:

(21, 119573), (29, 119636), (34, 119654), (Start: 53 @119687 has 184 MA's), (62, 119705), (91, 119837), (96, 119855), (112, 119915), (137, 120023), (141, 120047), (157, 120110), (159, 120116),

Gene: TaylorSipht_43 Start: 28692, Stop: 29159, Start Num: 48

Candidate Starts for TaylorSipt_43:

(Start: 48 @28692 has 39 MA's), (55, 28704), (Start: 63 @28728 has 1 MA's), (90, 28830), (96, 28854), (107, 28890), (108, 28896), (112, 28908), (117, 28944), (122, 28968), (138, 29040), (141, 29064), (147, 29082), (150, 29097), (164, 29148),

Gene: Teardrop_212 Start: 118854, Stop: 119309, Start Num: 53

Candidate Starts for Teardrop_212:

(21, 118740), (29, 118803), (34, 118821), (Start: 53 @118854 has 184 MA's), (62, 118872), (91, 119004), (96, 119022), (112, 119082), (137, 119190), (141, 119214), (157, 119277), (159, 119283),

Gene: Teng_45 Start: 25920, Stop: 25498, Start Num: 54

Candidate Starts for Teng_45:

(25, 25998), (Start: 54 @25920 has 5 MA's), (72, 25854), (92, 25785), (95, 25773), (109, 25722), (112, 25713), (139, 25608),

Gene: ThayneTheZag_91 Start: 48711, Stop: 49115, Start Num: 51

Candidate Starts for ThayneTheZag_91:

(Start: 51 @48711 has 4 MA's), (62, 48732), (67, 48768), (74, 48792), (101, 48882), (106, 48900), (129, 48984), (141, 49035), (154, 49080),

Gene: Tiff81_81 Start: 46437, Stop: 46868, Start Num: 49

Candidate Starts for Tiff81_81:

(19, 46326), (43, 46428), (Start: 49 @46437 has 37 MA's), (Start: 56 @46449 has 2 MA's), (66, 46494), (67, 46500), (74, 46524), (154, 46827),

Gene: TinyTim_213 Start: 119635, Stop: 120090, Start Num: 53

Candidate Starts for TinyTim_213:

(21, 119521), (29, 119584), (34, 119602), (Start: 53 @119635 has 184 MA's), (62, 119653), (91, 119785), (96, 119803), (112, 119863), (137, 119971), (141, 119995), (157, 120058), (159, 120064),

Gene: Toad24_45 Start: 29983, Stop: 30450, Start Num: 48

Candidate Starts for Toad24_45:

(Start: 48 @29983 has 39 MA's), (Start: 63 @30019 has 1 MA's), (81, 30079), (96, 30145), (107, 30181), (112, 30199), (123, 30259), (138, 30331), (141, 30355), (143, 30361), (155, 30412), (162, 30433), (164, 30439),

Gene: Tonenili_237 Start: 125468, Stop: 125920, Start Num: 53

Candidate Starts for Tonenili_237:

(21, 125354), (29, 125417), (34, 125435), (37, 125438), (Start: 53 @125468 has 184 MA's), (62, 125486), (96, 125636), (112, 125696), (137, 125804), (141, 125828),

Gene: Tortoise16_213 Start: 120097, Stop: 120552, Start Num: 53

Candidate Starts for Tortoise16_213:

(21, 119983), (29, 120046), (34, 120064), (Start: 53 @120097 has 184 MA's), (62, 120115), (91, 120247), (96, 120265), (112, 120325), (137, 120433), (141, 120457), (157, 120520), (159, 120526),

Gene: Trax_79 Start: 49196, Stop: 49636, Start Num: 52

Candidate Starts for Trax_79:

(Start: 50 @49190 has 4 MA's), (Start: 52 @49196 has 2 MA's), (59, 49205), (86, 49298), (92, 49325), (106, 49367), (111, 49388), (112, 49391), (114, 49409), (128, 49454), (141, 49523), (143, 49529), (145, 49535), (146, 49538), (148, 49547), (157, 49586),

Gene: Trinitium_211 Start: 118389, Stop: 118844, Start Num: 53

Candidate Starts for Trinitium_211:

(21, 118275), (29, 118338), (34, 118356), (Start: 53 @118389 has 184 MA's), (62, 118407), (91, 118539), (96, 118557), (112, 118617), (137, 118725), (141, 118749), (157, 118812), (159, 118818),

Gene: Turret_208 Start: 117971, Stop: 118426, Start Num: 53

Candidate Starts for Turret_208:

(21, 117857), (29, 117920), (34, 117938), (Start: 53 @117971 has 184 MA's), (62, 117989), (91, 118121), (96, 118139), (112, 118199), (137, 118307), (141, 118331), (157, 118394), (159, 118400),

Gene: Tyke_213 Start: 121464, Stop: 121919, Start Num: 53

Candidate Starts for Tyke_213:

(21, 121350), (29, 121413), (34, 121431), (Start: 53 @121464 has 184 MA's), (62, 121482), (91, 121614), (96, 121632), (112, 121692), (137, 121800), (141, 121824), (157, 121887), (159, 121893),

Gene: ValleyTerrace_216 Start: 119548, Stop: 120003, Start Num: 53

Candidate Starts for ValleyTerrace_216:

(21, 119434), (29, 119497), (34, 119515), (Start: 53 @119548 has 184 MA's), (62, 119566), (91, 119698), (96, 119716), (112, 119776), (137, 119884), (141, 119908), (157, 119971), (159, 119977),

Gene: Vendetta_57 Start: 38151, Stop: 38588, Start Num: 38

Candidate Starts for Vendetta_57:

(Start: 38 @38151 has 5 MA's), (45, 38160), (Start: 46 @38163 has 1 MA's), (62, 38187), (78, 38241), (85, 38262), (106, 38343), (112, 38367), (124, 38412),

Gene: Vopal_87 Start: 49392, Stop: 49823, Start Num: 49

Candidate Starts for Vopal_87:

(33, 49362), (Start: 49 @49392 has 37 MA's), (Start: 56 @49404 has 2 MA's), (62, 49419), (66, 49449), (67, 49455), (74, 49479), (88, 49527), (116, 49638), (154, 49782),

Gene: Vortrix_235 Start: 124255, Stop: 124707, Start Num: 53

Candidate Starts for Vortrix_235:

(21, 124141), (29, 124204), (34, 124222), (37, 124225), (Start: 53 @124255 has 184 MA's), (62, 124273), (96, 124423), (112, 124483), (137, 124591), (141, 124615),

Gene: Vulpecula_41 Start: 27795, Stop: 28265, Start Num: 48

Candidate Starts for Vulpecula_41:

(Start: 48 @27795 has 39 MA's), (Start: 63 @27831 has 1 MA's), (64, 27837), (90, 27933), (95, 27954), (100, 27972), (107, 27993), (112, 28011), (117, 28047), (138, 28146), (141, 28170), (147, 28188), (157, 28233), (164, 28254),

Gene: Wally_213 Start: 119532, Stop: 119987, Start Num: 53

Candidate Starts for Wally_213:

(21, 119418), (29, 119481), (34, 119499), (Start: 53 @119532 has 184 MA's), (62, 119550), (91, 119682), (96, 119700), (112, 119760), (137, 119868), (141, 119892), (157, 119955), (159, 119961),

Gene: Westrich_51 Start: 29667, Stop: 30134, Start Num: 48

Candidate Starts for Westrich_51:

(Start: 48 @29667 has 39 MA's), (Start: 63 @29703 has 1 MA's), (81, 29763), (96, 29829), (107, 29865), (112, 29883), (123, 29943), (131, 29988), (138, 30015), (141, 30039), (143, 30045), (155, 30096), (164, 30123),

Gene: WileyE_44 Start: 28771, Stop: 29241, Start Num: 48

Candidate Starts for WileyE_44:

(Start: 48 @28771 has 39 MA's), (Start: 63 @28807 has 1 MA's), (64, 28813), (90, 28909), (100, 28948), (107, 28969), (112, 28987), (117, 29023), (118, 29029), (128, 29074), (131, 29095), (141, 29146), (147, 29164), (157, 29209), (164, 29230),

Gene: Willis_216 Start: 120446, Stop: 120901, Start Num: 53

Candidate Starts for Willis_216:

(21, 120332), (29, 120395), (34, 120413), (Start: 53 @120446 has 184 MA's), (62, 120464), (91, 120596), (96, 120614), (112, 120674), (137, 120782), (141, 120806), (157, 120869), (159, 120875),

Gene: Windest_90 Start: 47044, Stop: 47469, Start Num: 49

Candidate Starts for Windest_90:

(33, 47014), (Start: 49 @47044 has 37 MA's), (Start: 56 @47056 has 2 MA's), (62, 47071), (66, 47101), (67, 47107), (74, 47131), (101, 47221), (154, 47434),

Gene: Wrackline_56 Start: 29872, Stop: 29441, Start Num: 54

Candidate Starts for Wrackline_56:

(27, 29953), (31, 29920), (Start: 49 @29881 has 37 MA's), (Start: 54 @29872 has 5 MA's), (Start: 56 @29869 has 2 MA's), (62, 29854), (66, 29824), (71, 29806), (77, 29788), (82, 29776), (96, 29716), (103, 29695), (106, 29680), (107, 29674), (130, 29593), (138, 29554), (141, 29530), (146, 29515), (162, 29455), (163, 29452),

Gene: Xavia_55 Start: 40820, Stop: 41251, Start Num: 36

Candidate Starts for Xavia_55:

(17, 40712), (Start: 36 @40820 has 2 MA's), (58, 40856), (60, 40859), (98, 40988), (103, 41003), (107, 41024), (128, 41102), (136, 41144), (140, 41168), (144, 41180), (153, 41222),

Gene: Yassified_212 Start: 119896, Stop: 120351, Start Num: 53

Candidate Starts for Yassified_212:

(1, 119377), (21, 119782), (29, 119845), (34, 119863), (Start: 53 @119896 has 184 MA's), (62, 119914), (91, 120046), (96, 120064), (112, 120124), (137, 120232), (141, 120256), (157, 120319), (159, 120325),

Gene: YemiJoy2021_216 Start: 121202, Stop: 121657, Start Num: 53

Candidate Starts for YemiJoy2021_216:

(21, 121088), (29, 121151), (34, 121169), (Start: 53 @121202 has 184 MA's), (62, 121220), (91, 121352), (96, 121370), (112, 121430), (137, 121538), (141, 121562), (157, 121625), (159, 121631),

Gene: YoungHarleezy_87 Start: 48839, Stop: 49270, Start Num: 49

Candidate Starts for YoungHarleezy_87:

(33, 48809), (Start: 49 @48839 has 37 MA's), (Start: 56 @48851 has 2 MA's), (62, 48866), (66, 48896), (67, 48902), (74, 48926), (154, 49229),

Gene: YoungMoneyMata_214 Start: 120016, Stop: 120471, Start Num: 53

Candidate Starts for YoungMoneyMata_214:

(21, 119902), (29, 119965), (34, 119983), (Start: 53 @120016 has 184 MA's), (62, 120034), (91, 120166), (96, 120184), (112, 120244), (137, 120352), (141, 120376), (157, 120439), (159, 120445),

Gene: Yucca_215 Start: 121194, Stop: 121649, Start Num: 53

Candidate Starts for Yucca_215:

(21, 121080), (29, 121143), (34, 121161), (Start: 53 @121194 has 184 MA's), (62, 121212), (91, 121344), (96, 121362), (112, 121422), (137, 121530), (141, 121554), (157, 121617), (159, 121623),

Gene: Zalkecks_214 Start: 120275, Stop: 120730, Start Num: 53

Candidate Starts for Zalkecks_214:

(21, 120161), (29, 120224), (34, 120242), (Start: 53 @120275 has 184 MA's), (62, 120293), (91, 120425), (96, 120443), (112, 120503), (137, 120611), (141, 120635), (157, 120698), (159, 120704),

Gene: Zeenon_217 Start: 120846, Stop: 121301, Start Num: 53

Candidate Starts for Zeenon_217:

(21, 120732), (29, 120795), (34, 120813), (Start: 53 @120846 has 184 MA's), (62, 120864), (91, 120996), (96, 121014), (112, 121074), (137, 121182), (141, 121206), (157, 121269), (159, 121275),

Gene: Zhuangyuan_47 Start: 28900, Stop: 29361, Start Num: 48

Candidate Starts for Zhuangyuan_47:

(Start: 48 @28900 has 39 MA's), (Start: 63 @28936 has 1 MA's), (79, 28993), (90, 29041), (96, 29065), (107, 29107), (131, 29227), (142, 29281), (143, 29284), (157, 29341), (160, 29350),

Gene: Zixiang_42 Start: 29348, Stop: 29815, Start Num: 48

Candidate Starts for Zixiang_42:

(Start: 48 @29348 has 39 MA's), (Start: 63 @29384 has 1 MA's), (81, 29444), (96, 29510), (107, 29546), (112, 29564), (123, 29624), (138, 29696), (141, 29720), (143, 29726), (155, 29777), (162, 29798), (164, 29804),

Gene: Zucker_84 Start: 49086, Stop: 49490, Start Num: 51

Candidate Starts for Zucker_84:

(7, 48822), (8, 48828), (10, 48840), (20, 48981), (Start: 51 @49086 has 4 MA's), (66, 49137), (67, 49143), (73, 49161), (74, 49167), (101, 49257), (106, 49275), (129, 49359), (141, 49410), (154, 49455),

Gene: ZygoTaiga_212 Start: 121466, Stop: 121921, Start Num: 53

Candidate Starts for ZygoTaiga_212:

(21, 121352), (29, 121415), (34, 121433), (Start: 53 @121466 has 184 MA's), (62, 121484), (91, 121616), (96, 121634), (112, 121694), (137, 121802), (141, 121826), (157, 121889), (159, 121895),