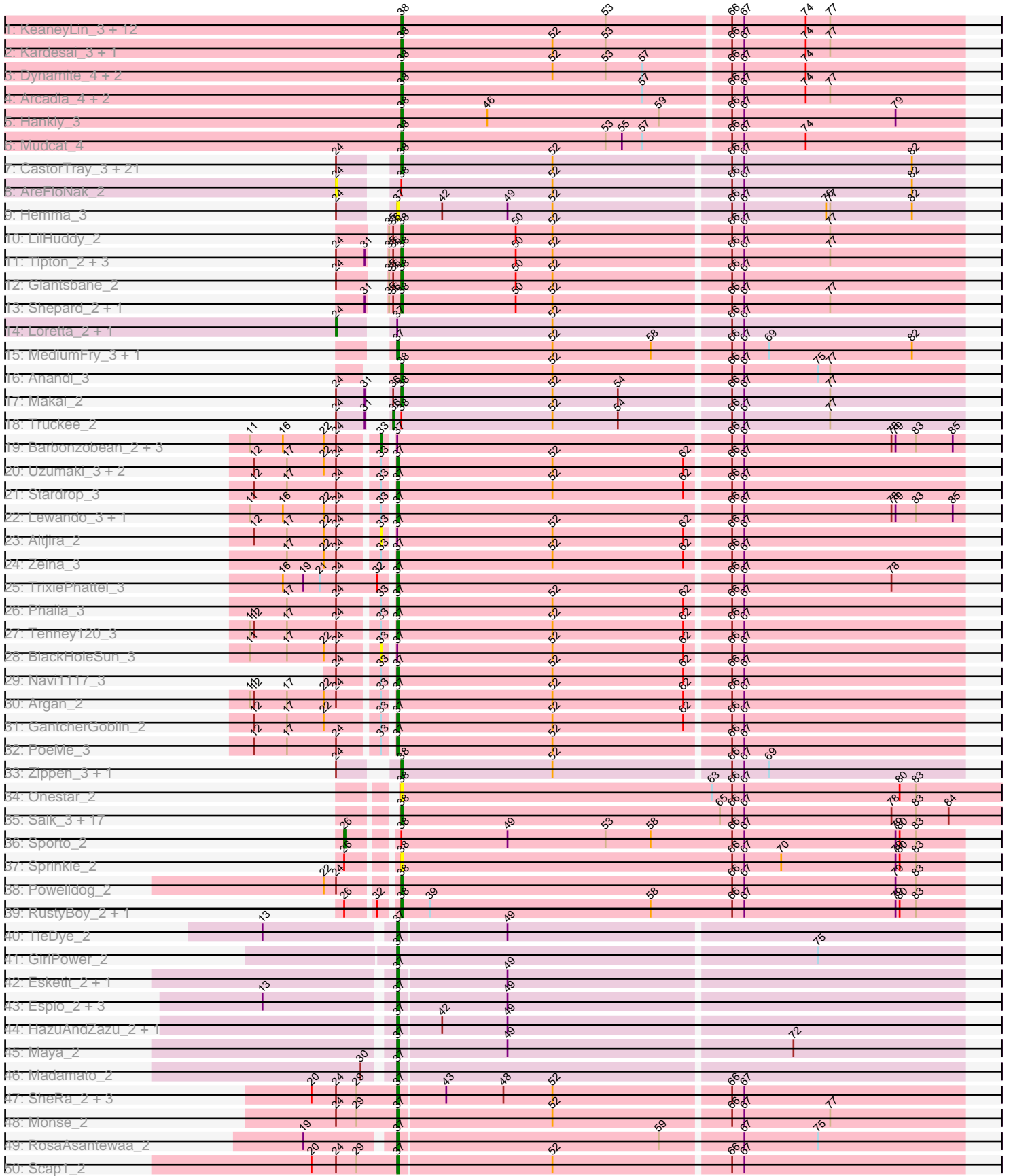
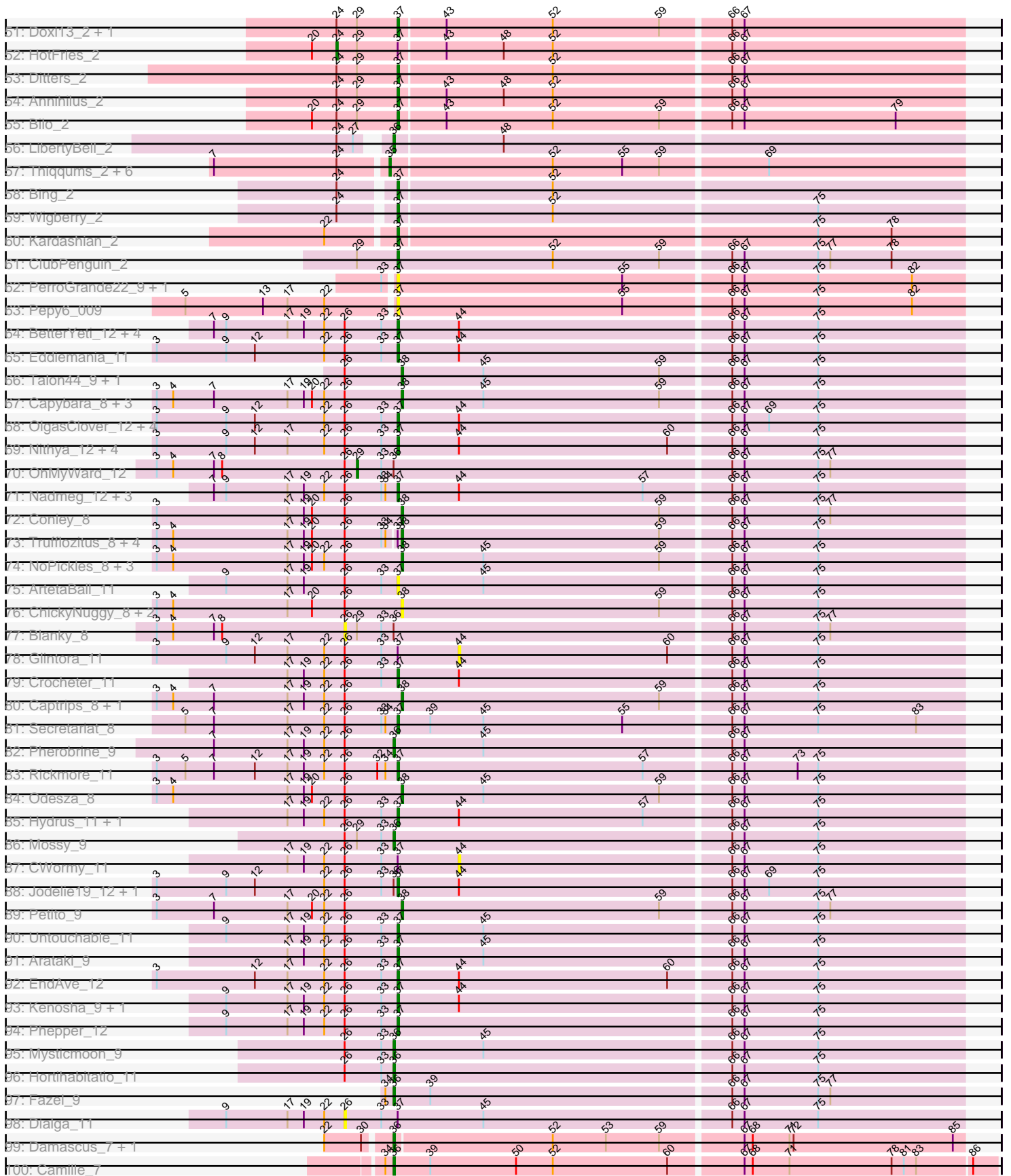
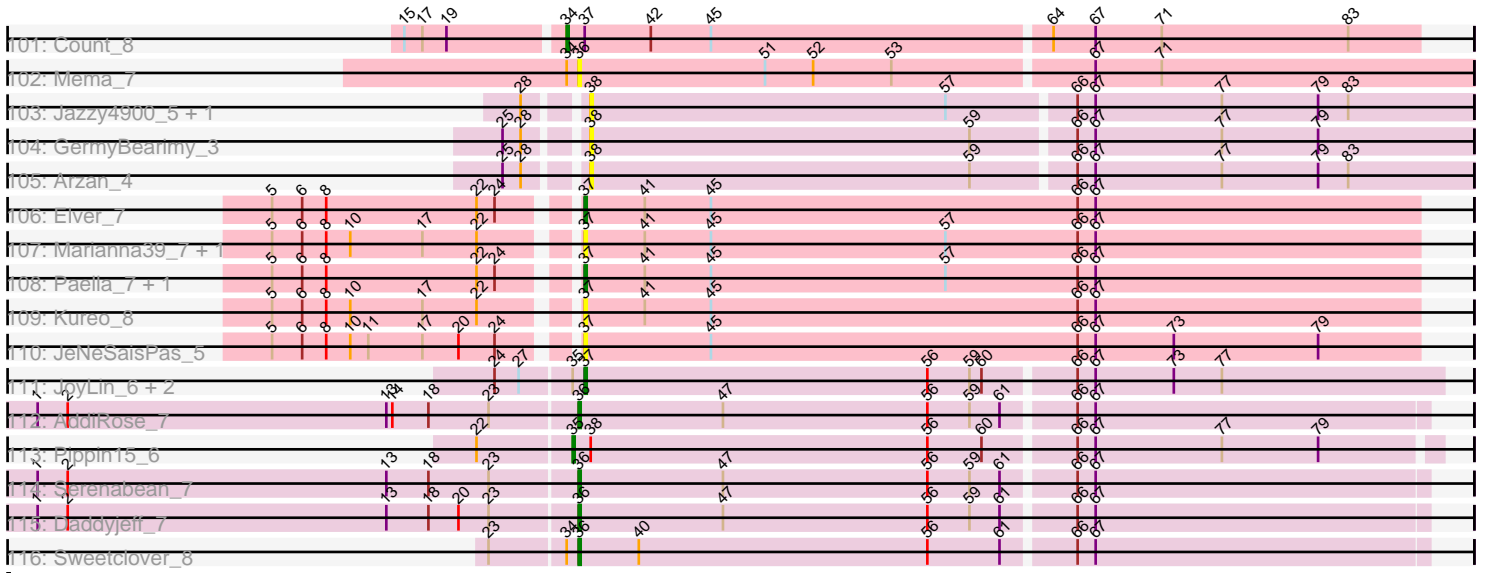


Pham 299824





Pham 299824



Note: Tracks are now grouped by subcluster and scaled. Switching in subcluster is indicated by changes in track color. Track scale is now set by default to display the region 30 bp upstream of start 1 to 30 bp downstream of the last possible start. If this default region is judged to be packed too tightly with annotated starts, the track will be further scaled to only show that region of the ORF with annotated starts. This action will be indicated by adding "Zoomed" to the title. For starts, yellow indicates the location of called starts comprised solely of Glimmer/GeneMark auto-annotations, green indicates the location of called starts with at least 1 manual gene annotation.

Pham 299824 Report

This analysis was run 06/08/26 on database version 649.

Pham number 299824 has 239 members, 43 are drafts.

Phages represented in each track:

- Track 1 : KeaneyLin_3, Benllo_3, Heisenberger_4, YoshiYama_3, Cheesy_4, Xenomorph_3, JEGGS_4, BenitoAntonio_4, Correa_4, GoCrazy_3, Circum_4, Tribby_4, Stardom_3
- Track 2 : Kardesai_3, Mooshroom_4
- Track 3 : Dynamite_4, NapoleonB_4, Bowling_4
- Track 4 : Arcadia_4, Nason_4, Elsa_4
- Track 5 : Hankly_3
- Track 6 : Mudcat_4
- Track 7 : CastorTray_3, Gordon_2, Dinallo_3, Breylor17_2, Issa_2, ElephantMan_2, ScienceWizSam_3, Acai_2, Tatanka_2, Teacup_3, Tenno_3, DevitoJr_2, CapnMurica_3, Darby_2, Trustiboi_2, LucySwiss_2, Niktson_2, Nightmare_2, Brunswick_2, MiniBagel_3, Nivinsha_2, Synepsis_2
- Track 8 : AreFloNak_2
- Track 9 : Hemma_3
- Track 10 : LilHuddy_2
- Track 11 : Tipton_2, Chlochlo_2, Tokki_2, Bouchard_2
- Track 12 : Giantsbane_2
- Track 13 : Shepard_2, Phaby_2
- Track 14 : Loretta_2, Ingrid_2
- Track 15 : MediumFry_3, Caterpillar_3
- Track 16 : Anandi_3
- Track 17 : Makai_2
- Track 18 : Truckee_2
- Track 19 : Barbonzobean_2, Renaldo_3, Kinny_3, Muglass_2
- Track 20 : Uzumaki_3, KevinMinion_2, Mardi_3
- Track 21 : Stardrop_3
- Track 22 : Lewando_3, Biscute_2
- Track 23 : Altjira_2
- Track 24 : Zeina_3
- Track 25 : TrixiePhattel_3
- Track 26 : Phaila_3
- Track 27 : Tenney120_3
- Track 28 : BlackHoleSun_3
- Track 29 : Navi1117_3
- Track 30 : Argan_2
- Track 31 : GantcherGoblin_2
- Track 32 : PoeMe_3

- Track 33 : Zippen_3, Inked_3
- Track 34 : Onestar_2
- Track 35 : Salk_3, HerbBucket_3, DoctorPepper_3, Stayer_3, Egad_3, Boog_3, Michelle_3, StarLord_3, Shiba_3, Raunak_3, BronxBay_3, Djungelskog_3, Sloopyjoe_3, MrAaronian_3, Spain_3, Jeremy4pt0_3, Linda_3, ProfFrink_3
- Track 36 : Sporto_2
- Track 37 : Sprinkle_2
- Track 38 : Powelldog_2
- Track 39 : RustyBoy_2, Natasha_2
- Track 40 : TieDye_2
- Track 41 : GirlPower_2
- Track 42 : Esketit_2, TonyStarch_2
- Track 43 : Espio_2, FrodoSwaggins_2, Popy_2, DrGrey_2
- Track 44 : HazuAndZazu_2, Soshi_2
- Track 45 : Maya_2
- Track 46 : Madamato_2
- Track 47 : SheRa_2, Moozy_2, RavenPuff_2, PherryCruz_2
- Track 48 : Monse_2
- Track 49 : RosaAsantewaa_2
- Track 50 : Scap1_2
- Track 51 : Doxi13_2, GoblinVoyage_2
- Track 52 : HotFries_2
- Track 53 : Ditters_2
- Track 54 : Annihilus_2
- Track 55 : Bilo_2
- Track 56 : LibertyBell_2
- Track 57 : Thiqqums_2, Miek_2, Regigigas_2, CricKo_2, FromIndy_2, SendItCS_2, Rainydai_2
- Track 58 : Bing_2
- Track 59 : Wigberry_2
- Track 60 : Kardashian_2
- Track 61 : ClubPenguin_2
- Track 62 : PerroGrande22_9, Poco6_011
- Track 63 : Pepy6_009
- Track 64 : BetterYeti_12, PestoPenguin_12, ShaggyRogers_12, Aloe25_12, Gusicorn_12
- Track 65 : Eddiemania_11
- Track 66 : Talon44_9, Perkunas_10
- Track 67 : Capybara_8, Gravy_8, Kerry_8, Gill_8
- Track 68 : OlgasClover_12, MajinBuu_12, Figliar_12, Tonaltzin_13, BluerMoon_12
- Track 69 : Nithya_12, Chikenjars_12, Duffington_12, Citrus_11, AlainaMarie_12
- Track 70 : OhMyWard_12
- Track 71 : Nadmeg_12, Vardy_12, Runhaar_12, Burley_12
- Track 72 : Conley_8
- Track 73 : Trufflozitus_8, Dancer_8, Artorias_8, JulesRay_8, FortCran_8
- Track 74 : NoPickles_8, Roney_8, Magel_8, Tanis_8
- Track 75 : ArtetaBall_11
- Track 76 : ChickyNuggy_8, Bugg_9, Football_8
- Track 77 : Blanky_8
- Track 78 : Glintora_11
- Track 79 : Crocheter_11
- Track 80 : Captrips_8, Avazak_8
- Track 81 : Secretariat_8

- Track 82 : Pherobrine_9
- Track 83 : Rickmore_11
- Track 84 : Odesza_8
- Track 85 : Hydrus_11, Zeph_11
- Track 86 : Mossy_9
- Track 87 : CWormy_11
- Track 88 : Jodelie19_12, TenaciousP_12
- Track 89 : Petite_9
- Track 90 : Untouchable_11
- Track 91 : Arataki_9
- Track 92 : EndAve_12
- Track 93 : Kenosha_9, Madvan_12
- Track 94 : Phepper_12
- Track 95 : Mysticmoon_9
- Track 96 : Hortihabitatio_11
- Track 97 : Fazel_9
- Track 98 : Dialga_11
- Track 99 : Damascus_7, DizzyRudy_7
- Track 100 : Camille_7
- Track 101 : Count_8
- Track 102 : Mema_7
- Track 103 : Jazzy4900_5, Sunny4976_4
- Track 104 : GermyBearimy_3
- Track 105 : Arzan_4
- Track 106 : Elver_7
- Track 107 : Marianna39_7, Gandionco_6
- Track 108 : Paella_7, Qui_7
- Track 109 : Kureo_8
- Track 110 : JeNeSaisPas_5
- Track 111 : JoyLin_6, Eevee_6, Yotsuba_6
- Track 112 : AddiRose_7
- Track 113 : Pippin15_6
- Track 114 : Serenabean_7
- Track 115 : Daddyjeff_7
- Track 116 : Sweetclover_8

Summary of Final Annotations (See graph section above for start numbers):

The start number called the most often in the published annotations is 38, it was called in 90 of the 196 non-draft genes in the pham.

Genes that call this "Most Annotated" start:

• Acai_2, Anandi_3, Arcadia_4, Artorias_8, Arzan_4, Avazak_8, BenitoAntonio_4, Benllo_3, Boog_3, Bouchard_2, Bowling_4, Breylor17_2, BronxBay_3, Brunswick_2, Bugg_9, CapnMurica_3, Captrips_8, Capybara_8, CastorTray_3, Cheesy_4, ChickyNuggy_8, Chlochlo_2, Circum_4, Conley_8, Correa_4, Dancer_8, Darby_2, DevitoJr_2, Dinallo_3, Djungelskog_3, DoctorPepper_3, Dynamite_4, Egad_3, ElephantMan_2, Elsa_4, Football_8, FortCran_8, GermyBearimy_3, Giantsbane_2, Gill_8, GoCrazy_3, Gordon_2, Gravy_8, Hankly_3, Heisenberger_4, HerbBucket_3, Inked_3, Issa_2, JEGGS_4, Jazzy4900_5, Jeremy4pt0_3, JulesRay_8, Kardesai_3,

KeaneyLin_3, Kerry_8, LilHuddy_2, Linda_3, LucySwiss_2, Magel_8, Makai_2, Michelle_3, MiniBagel_3, Mooshroom_4, MrAaronian_3, Mudcat_4, NapoleonB_4, Nason_4, Natasha_2, Nightmare_2, Niktson_2, Nivinsha_2, NoPickles_8, Odesza_8, Onestar_2, Perkunas_10, Petito_9, Phaby_2, PowellDog_2, ProfFrink_3, Raunak_3, Roney_8, RustyBoy_2, Salk_3, ScienceWizSam_3, Shepard_2, Shiba_3, Sloopyjoe_3, Spain_3, Sprinkle_2, StarLord_3, Stardom_3, Stayer_3, Sunny4976_4, Synopsis_2, Talon44_9, Tanis_8, Tatanka_2, Teacup_3, Tenno_3, Tipton_2, Tokki_2, Tribby_4, Trufflozitus_8, Trustiboi_2, Xenomorph_3, YoshiYama_3, Zippen_3,

Genes that have the "Most Annotated" start but do not call it:

- AreFloNak_2, Pippin15_6, Sporto_2, Truckee_2,

Genes that do not have the "Most Annotated" start:

- AddiRose_7, AlainaMarie_12, Aloe25_12, Altjira_2, Annihilus_2, Arataki_9, Argan_2, ArtetaBall_11, Barbonzobean_2, BetterYeti_12, Bilo_2, Bing_2, Biscute_2, BlackHoleSun_3, Blanky_8, BluerMoon_12, Burley_12, CWormy_11, Camille_7, Caterpillar_3, Chikenjars_12, Citrus_11, ClubPenguin_2, Count_8, CricKo_2, Crocheter_11, Daddyjeff_7, Damascus_7, Dialga_11, Ditters_2, DizzyRudy_7, Doxi13_2, DrGrey_2, Duffington_12, Eddiemania_11, Eevee_6, Elver_7, EndAve_12, Esketit_2, Espio_2, Fazel_9, Figliar_12, FrodoSwaggins_2, FromIndy_2, Gandionco_6, GantcherGoblin_2, GirlPower_2, Glintora_11, GoblinVoyage_2, Gusicorn_12, HazuAndZazu_2, Hemma_3, Hortihabitatio_11, HotFries_2, Hydrus_11, Ingrid_2, JeNeSaisPas_5, Jodelie19_12, JoyLin_6, Kardashian_2, Kenosha_9, KevinMinion_2, Kinny_3, Kureo_8, Lewando_3, LibertyBell_2, Loretta_2, Madamato_2, Madvan_12, MajinBuu_12, Mardi_3, Marianna39_7, Maya_2, MediumFry_3, Mema_7, Miek_2, Monse_2, Moozy_2, Mossy_9, Muglass_2, Mysticmoon_9, Nadmeg_12, Navi1117_3, Nithya_12, OhMyWard_12, OlgasClover_12, Paella_7, Pepy6_009, PerroGrande22_9, PestoPenguin_12, Phaila_3, Phepper_12, Pherobrine_9, PherryCruz_2, Poco6_011, PoeMe_3, Popy_2, Qui_7, Rainydai_2, RavenPuff_2, Regigigas_2, Renaldo_3, Rickmore_11, RosaAsantewaa_2, Runhaar_12, Scap1_2, Secretariat_8, SendItCS_2, Serenabean_7, ShaggyRogers_12, SheRa_2, Soshi_2, Stardrop_3, Sweetclover_8, TenaciousP_12, Tenney120_3, Thiqqums_2, TieDye_2, Tonaltzin_13, TonyStarch_2, TrixiePhattel_3, Untouchable_11, Uzumaki_3, Vardy_12, Wigberry_2, Yotsuba_6, Zeina_3, Zeph_11,

Summary by start number:

Start 24:

- Found in 84 of 239 (35.1%) of genes in pham
- Manual Annotations of this start: 3 of 196
- Called 4.8% of time when present
- Phage (with cluster) where this start called: AreFloNak_2 (AU1), HotFries_2 (BI2), Ingrid_2 (AU3), Loretta_2 (AU3),

Start 26:

- Found in 70 of 239 (29.3%) of genes in pham
- Manual Annotations of this start: 1 of 196
- Called 4.3% of time when present
- Phage (with cluster) where this start called: Blanky_8 (DJ), Dialga_11 (DJ), Sporto_2 (AW),

Start 29:

- Found in 16 of 239 (6.7%) of genes in pham
- Manual Annotations of this start: 1 of 196
- Called 6.2% of time when present
- Phage (with cluster) where this start called: OhMyWard_12 (DJ),

Start 33:

- Found in 67 of 239 (28.0%) of genes in pham
- Manual Annotations of this start: 1 of 196
- Called 9.0% of time when present
- Phage (with cluster) where this start called: Altjira_2 (AU6), Barbonzobean_2 (AU6), BlackHoleSun_3 (AU6), Kinny_3 (AU6), Muglass_2 (AU6), Renaldo_3 (AU6),

Start 34:

- Found in 16 of 239 (6.7%) of genes in pham
- Manual Annotations of this start: 1 of 196
- Called 6.2% of time when present
- Phage (with cluster) where this start called: Count_8 (EL),

Start 35:

- Found in 19 of 239 (7.9%) of genes in pham
- Manual Annotations of this start: 6 of 196
- Called 42.1% of time when present
- Phage (with cluster) where this start called: CricKo_2 (BI4), FromIndy_2 (BI4), Miek_2 (BI4), Pippin15_6 (JA), Rainydai_2 (BI4), Regigigas_2 (BI4), SendItCS_2 (BI4), Thiqqums_2 (BI4),

Start 36:

- Found in 28 of 239 (11.7%) of genes in pham
- Manual Annotations of this start: 14 of 196
- Called 53.6% of time when present
- Phage (with cluster) where this start called: AddiRose_7 (JA), Camille_7 (EL), Daddyjeff_7 (JA), Damascus_7 (EL), DizzyRudy_7 (EL), Fazel_9 (DJ), Hortihabitatio_11 (DJ), LibertyBell_2 (BI3), Mema_7 (EL), Mossy_9 (DJ), Mysticmoon_9 (DJ), Pherobrine_9 (DJ), Serenabean_7 (JA), Sweetclover_8 (JA), Truckee_2 (AU5),

Start 37:

- Found in 110 of 239 (46.0%) of genes in pham
- Manual Annotations of this start: 79 of 196
- Called 83.6% of time when present
- Phage (with cluster) where this start called: AlainaMarie_12 (DJ), Aloe25_12 (DJ), Annihilus_2 (BI2), Arataki_9 (DJ), Argan_2 (AU6), ArtetaBall_11 (DJ), BetterYeti_12 (DJ), Bilo_2 (BI2), Bing_2 (BI5), Biscute_2 (AU6), BluerMoon_12 (DJ), Burley_12 (DJ), Caterpillar_3 (AU4), Chikenjars_12 (DJ), Citrus_11 (DJ), ClubPenguin_2 (BI7), Crocheter_11 (DJ), Ditters_2 (BI2), Doxi13_2 (BI2), DrGrey_2 (BI1), Duffington_12 (DJ), Eddiemania_11 (DJ), Eevee_6 (JA), Elver_7 (FK), EndAve_12 (DJ), Esketit_2 (BI1), Espio_2 (BI1), Figliar_12 (DJ), FrodoSwaggins_2 (BI1), Gandionco_6 (FK), GantcherGoblin_2 (AU6), GirlPower_2 (BI1), GoblinVoyage_2 (BI2), Gusicorn_12 (DJ), HazuAndZazu_2 (BI1), Hemma_3 (AU1), Hydrus_11 (DJ), JeNeSaisPas_5 (FK), Jodelie19_12 (DJ), JoyLin_6 (JA), Kardashian_2 (BI6), Kenosha_9 (DJ), KevinMinion_2 (AU6), Kureo_8 (FK), Lewando_3 (AU6), Madamoto_2 (BI1), Madvan_12 (DJ), MajinBuu_12 (DJ), Mardi_3 (AU6), Marianna39_7 (FK), Maya_2

(BI1), MediumFry_3 (AU4), Monse_2 (BI2), Moozy_2 (BI2), Nadmeg_12 (DJ), Navi1117_3 (AU6), Nithya_12 (DJ), OlgasClover_12 (DJ), Paella_7 (FK), Pepy6_009 (CC), PerroGrande22_9 (CC), PestoPenguin_12 (DJ), Phaila_3 (AU6), Phepper_12 (DJ), PherryCruz_2 (BI2), Poco6_011 (CC), PoeMe_3 (AU6), Popy_2 (BI1), Qui_7 (FK), RavenPuff_2 (BI2), Rickmore_11 (DJ), RosaAsantewaa_2 (BI2), Runhaar_12 (DJ), Scap1_2 (BI2), Secretariat_8 (DJ), ShaggyRogers_12 (DJ), SheRa_2 (BI2), Soshi_2 (BI1), Stardrop_3 (AU6), TenaciousP_12 (DJ), Tenney120_3 (AU6), TieDye_2 (BI1), Tonaltzin_13 (DJ), TonyStarch_2 (BI1), TrixiePhattel_3 (AU6), Untouchable_11 (DJ), Uzumaki_3 (AU6), Vardy_12 (DJ), Wigberry_2 (BI5), Yotsuba_6 (JA), Zeina_3 (AU6), Zeph_11 (DJ),

Start 38:

- Found in 111 of 239 (46.4%) of genes in pham
- Manual Annotations of this start: 90 of 196
- Called 96.4% of time when present
- Phage (with cluster) where this start called: Acai_2 (AU1), Anandi_3 (AU4), Arcadia_4 (AM), Artorias_8 (DJ), Arzan_4 (FI), Avazak_8 (DJ), BenitoAntonio_4 (AM), Benllo_3 (AM), Boog_3 (AW), Bouchard_2 (AU2), Bowling_4 (AM), Breylor17_2 (AU1), BronxBay_3 (AW), Brunswick_2 (AU1), Bugg_9 (DJ), CapnMurica_3 (AU1), Captrips_8 (DJ), Copybara_8 (DJ), CastorTray_3 (AU1), Cheesy_4 (AM), ChickyNuggy_8 (DJ), Chlochlo_2 (AU2), Circum_4 (AM), Conley_8 (DJ), Correa_4 (AM), Dancer_8 (DJ), Darby_2 (AU1), DevitoJr_2 (AU1), Dinallo_3 (AU1), Djungelskog_3 (AW), DoctorPepper_3 (AW), Dynamite_4 (AM), Egad_3 (AW), ElephantMan_2 (AU1), Elsa_4 (AM), Football_8 (DJ), FortCran_8 (DJ), GermyBearimy_3 (FI), Giantsbane_2 (AU2), Gill_8 (DJ), GoCrazy_3 (AM), Gordon_2 (AU1), Gravy_8 (DJ), Hankly_3 (AM), Heisenberger_4 (AM), HerbBucket_3 (AW), Inked_3 (AU7), Issa_2 (AU1), JEGGS_4 (AM), Jazzy4900_5 (FI), Jeremy4pt0_3 (AW), JulesRay_8 (DJ), Kardesai_3 (AM), KeaneyLin_3 (AM), Kerry_8 (DJ), LilHuddy_2 (AU2), Linda_3 (AW), LucySwiss_2 (AU1), Magel_8 (DJ), Makai_2 (AU5), Michelle_3 (AW), MiniBagel_3 (AU1), Mooshroom_4 (AM), MrAaronian_3 (AW), Mudcat_4 (AM), NapoleonB_4 (AM), Nason_4 (AM), Natasha_2 (AW), Nightmare_2 (AU1), Niktson_2 (AU1), Nivinsha_2 (AU1), NoPickles_8 (DJ), Odesza_8 (DJ), Onestar_2 (AW), Perkunas_10 (DJ), Petite_9 (DJ), Phaby_2 (AU2), PowellDog_2 (AW), ProfFrink_3 (AW), Raunak_3 (AW), Roney_8 (DJ), RustyBoy_2 (AW), Salk_3 (AW), ScienceWizSam_3 (AU1), Shepard_2 (AU2), Shiba_3 (AW), Sloopyjoe_3 (AW), Spain_3 (AW), Sprinkle_2 (AW), StarLord_3 (AW), Stardom_3 (AM), Stayer_3 (AW), Sunny4976_4 (FI), Synopsis_2 (AU1), Talon44_9 (DJ), Tanis_8 (DJ), Tatanka_2 (AU1), Teacup_3 (AU1), Tenno_3 (AU1), Tipton_2 (AU2), Tokki_2 (AU2), Tribby_4 (AM), Trufflozitus_8 (DJ), Trustiboi_2 (AU1), Xenomorph_3 (AM), YoshiYama_3 (AM), Zippen_3 (AU7),

Start 44:

- Found in 30 of 239 (12.6%) of genes in pham
- No Manual Annotations of this start.
- Called 6.7% of time when present
- Phage (with cluster) where this start called: CWormy_11 (DJ), Glintora_11 (DJ),

Summary by clusters:

There are 22 clusters represented in this pham: DJ, FI, FK, JA, AU1, AU3, AU2, AU5, AU4, AU7, AU6, EL, CC, AM, AW, BI6, BI7, BI4, BI5, BI2, BI3, BI1,

Info for manual annotations of cluster AM:

- Start number 38 was manually annotated 21 times for cluster AM.

Info for manual annotations of cluster AU1:

- Start number 38 was manually annotated 19 times for cluster AU1.

Info for manual annotations of cluster AU2:

- Start number 38 was manually annotated 8 times for cluster AU2.

Info for manual annotations of cluster AU3:

- Start number 24 was manually annotated 2 times for cluster AU3.

Info for manual annotations of cluster AU4:

- Start number 37 was manually annotated 2 times for cluster AU4.
- Start number 38 was manually annotated 1 time for cluster AU4.

Info for manual annotations of cluster AU5:

- Start number 36 was manually annotated 1 time for cluster AU5.
- Start number 38 was manually annotated 1 time for cluster AU5.

Info for manual annotations of cluster AU6:

- Start number 33 was manually annotated 1 time for cluster AU6.
- Start number 37 was manually annotated 13 times for cluster AU6.

Info for manual annotations of cluster AU7:

- Start number 38 was manually annotated 2 times for cluster AU7.

Info for manual annotations of cluster AW:

- Start number 26 was manually annotated 1 time for cluster AW.
- Start number 38 was manually annotated 18 times for cluster AW.

Info for manual annotations of cluster BI1:

- Start number 37 was manually annotated 12 times for cluster BI1.

Info for manual annotations of cluster BI2:

- Start number 24 was manually annotated 1 time for cluster BI2.
- Start number 37 was manually annotated 12 times for cluster BI2.

Info for manual annotations of cluster BI3:

- Start number 36 was manually annotated 1 time for cluster BI3.

Info for manual annotations of cluster BI4:

- Start number 35 was manually annotated 5 times for cluster BI4.

Info for manual annotations of cluster BI5:

- Start number 37 was manually annotated 2 times for cluster BI5.

Info for manual annotations of cluster BI6:

- Start number 37 was manually annotated 1 time for cluster BI6.

Info for manual annotations of cluster BI7:

- Start number 37 was manually annotated 1 time for cluster BI7.

Info for manual annotations of cluster DJ:

- Start number 29 was manually annotated 1 time for cluster DJ.
- Start number 36 was manually annotated 5 times for cluster DJ.
- Start number 37 was manually annotated 30 times for cluster DJ.
- Start number 38 was manually annotated 20 times for cluster DJ.

Info for manual annotations of cluster EL:

- Start number 34 was manually annotated 1 time for cluster EL.
- Start number 36 was manually annotated 3 times for cluster EL.

Info for manual annotations of cluster FK:

- Start number 37 was manually annotated 3 times for cluster FK.

Info for manual annotations of cluster JA:

- Start number 35 was manually annotated 1 time for cluster JA.
- Start number 36 was manually annotated 4 times for cluster JA.
- Start number 37 was manually annotated 3 times for cluster JA.

Gene Information:

Gene: Acai_2 Start: 1121, Stop: 1528, Start Num: 38

Candidate Starts for Acai_2:

(Start: 24 @1091 has 3 MA's), (Start: 38 @1121 has 90 MA's), (52, 1232), (66, 1358), (67, 1367), (82, 1490),

Gene: AddiRose_7 Start: 2955, Stop: 3371, Start Num: 36

Candidate Starts for AddiRose_7:

(1, 2688), (2, 2703), (13, 2862), (14, 2865), (18, 2883), (23, 2913), (Start: 36 @2955 has 14 MA's), (47, 3027), (56, 3129), (59, 3150), (61, 3165), (66, 3198), (67, 3207),

Gene: AlainaMarie_12 Start: 6218, Stop: 6628, Start Num: 37

Candidate Starts for AlainaMarie_12:

(3, 6041), (9, 6092), (12, 6113), (17, 6137), (22, 6164), (Start: 26 @6179 has 1 MA's), (Start: 33 @6206 has 1 MA's), (Start: 37 @6218 has 79 MA's), (44, 6263), (60, 6416), (66, 6458), (67, 6467), (75, 6521),

Gene: Aloe25_12 Start: 6017, Stop: 6427, Start Num: 37

Candidate Starts for Aloe25_12:

(7, 5882), (9, 5891), (17, 5936), (19, 5948), (22, 5963), (Start: 26 @5978 has 1 MA's), (Start: 33 @6005 has 1 MA's), (Start: 37 @6017 has 79 MA's), (44, 6062), (66, 6257), (67, 6266), (75, 6320),

Gene: Altjira_2 Start: 985, Stop: 1401, Start Num: 33

Candidate Starts for Altjira_2:

(12, 898), (17, 922), (22, 949), (Start: 24 @958 has 3 MA's), (Start: 33 @985 has 1 MA's), (Start: 37 @991 has 79 MA's), (52, 1105), (62, 1201), (66, 1231), (67, 1240),

Gene: Anandi_3 Start: 1217, Stop: 1624, Start Num: 38

Candidate Starts for Anandi_3:

(Start: 38 @1217 has 90 MA's), (52, 1328), (66, 1454), (67, 1463), (75, 1517), (77, 1526),

Gene: Annihilus_2 Start: 483, Stop: 890, Start Num: 37

Candidate Starts for Annihilus_2:

(Start: 24 @438 has 3 MA's), (Start: 29 @453 has 1 MA's), (Start: 37 @483 has 79 MA's), (43, 516), (48, 558), (52, 594), (66, 720), (67, 729),

Gene: Arataki_9 Start: 3809, Stop: 4219, Start Num: 37

Candidate Starts for Arataki_9:

(17, 3728), (19, 3740), (22, 3755), (Start: 26 @3770 has 1 MA's), (Start: 33 @3797 has 1 MA's), (Start: 37 @3809 has 79 MA's), (45, 3872), (66, 4049), (67, 4058), (75, 4112),

Gene: Arcadia_4 Start: 1466, Stop: 1873, Start Num: 38

Candidate Starts for Arcadia_4:

(Start: 38 @1466 has 90 MA's), (57, 1643), (66, 1703), (67, 1712), (74, 1757), (77, 1775),

Gene: AreFloNak_2 Start: 954, Stop: 1391, Start Num: 24

Candidate Starts for AreFloNak_2:

(Start: 24 @954 has 3 MA's), (Start: 38 @984 has 90 MA's), (52, 1095), (66, 1221), (67, 1230), (82, 1353),

Gene: Argan_2 Start: 805, Stop: 1215, Start Num: 37

Candidate Starts for Argan_2:

(11, 709), (12, 712), (17, 736), (22, 763), (Start: 24 @772 has 3 MA's), (Start: 33 @799 has 1 MA's), (Start: 37 @805 has 79 MA's), (52, 919), (62, 1015), (66, 1045), (67, 1054),

Gene: ArtetaBall_11 Start: 4945, Stop: 5355, Start Num: 37

Candidate Starts for ArtetaBall_11:

(9, 4819), (17, 4864), (19, 4876), (Start: 26 @4906 has 1 MA's), (Start: 33 @4933 has 1 MA's), (Start: 37 @4945 has 79 MA's), (45, 5008), (66, 5185), (67, 5194), (75, 5248),

Gene: Artorias_8 Start: 3380, Stop: 3787, Start Num: 38

Candidate Starts for Artorias_8:

(3, 3203), (4, 3215), (17, 3299), (19, 3311), (20, 3317), (Start: 26 @3341 has 1 MA's), (Start: 33 @3368 has 1 MA's), (Start: 34 @3371 has 1 MA's), (Start: 37 @3377 has 79 MA's), (Start: 38 @3380 has 90 MA's), (59, 3569), (66, 3617), (67, 3626), (75, 3680),

Gene: Arzan_4 Start: 1534, Stop: 1968, Start Num: 38

Candidate Starts for Arzan_4:

(25, 1501), (28, 1510), (Start: 38 @1534 has 90 MA's), (59, 1723), (66, 1771), (67, 1780), (77, 1843), (79, 1891), (83, 1906),

Gene: Avazak_8 Start: 3383, Stop: 3790, Start Num: 38

Candidate Starts for Avazak_8:

(3, 3203), (4, 3215), (7, 3245), (17, 3299), (19, 3311), (22, 3326), (Start: 26 @3341 has 1 MA's), (Start: 38 @3383 has 90 MA's), (59, 3572), (66, 3620), (67, 3629), (75, 3683),

Gene: Barbonzobean_2 Start: 791, Stop: 1207, Start Num: 33

Candidate Starts for Barbonzobean_2:

(11, 701), (16, 725), (22, 755), (Start: 24 @764 has 3 MA's), (Start: 33 @791 has 1 MA's), (Start: 37 @797 has 79 MA's), (66, 1037), (67, 1046), (78, 1154), (79, 1157), (83, 1172), (85, 1199),

Gene: BenitoAntonio_4 Start: 1074, Stop: 1481, Start Num: 38

Candidate Starts for BenitoAntonio_4:

(Start: 38 @1074 has 90 MA's), (53, 1224), (66, 1311), (67, 1320), (74, 1365), (77, 1383),

Gene: Benllo_3 Start: 1076, Stop: 1483, Start Num: 38

Candidate Starts for Benllo_3:

(Start: 38 @1076 has 90 MA's), (53, 1226), (66, 1313), (67, 1322), (74, 1367), (77, 1385),

Gene: BetterYeti_12 Start: 6017, Stop: 6427, Start Num: 37

Candidate Starts for BetterYeti_12:

(7, 5882), (9, 5891), (17, 5936), (19, 5948), (22, 5963), (Start: 26 @5978 has 1 MA's), (Start: 33 @6005 has 1 MA's), (Start: 37 @6017 has 79 MA's), (44, 6062), (66, 6257), (67, 6266), (75, 6320),

Gene: Bilo_2 Start: 483, Stop: 890, Start Num: 37

Candidate Starts for Bilo_2:

(20, 420), (Start: 24 @438 has 3 MA's), (Start: 29 @453 has 1 MA's), (Start: 37 @483 has 79 MA's), (43, 516), (52, 594), (59, 672), (66, 720), (67, 729), (79, 840),

Gene: Bing_2 Start: 495, Stop: 902, Start Num: 37

Candidate Starts for Bing_2:

(Start: 24 @459 has 3 MA's), (Start: 37 @495 has 79 MA's), (52, 606),

Gene: Biscute_2 Start: 797, Stop: 1207, Start Num: 37

Candidate Starts for Biscute_2:

(11, 701), (16, 725), (22, 755), (Start: 24 @764 has 3 MA's), (Start: 33 @791 has 1 MA's), (Start: 37 @797 has 79 MA's), (66, 1037), (67, 1046), (78, 1154), (79, 1157), (83, 1172), (85, 1199),

Gene: BlackHoleSun_3 Start: 1166, Stop: 1582, Start Num: 33

Candidate Starts for BlackHoleSun_3:

(11, 1076), (17, 1103), (22, 1130), (Start: 24 @1139 has 3 MA's), (Start: 33 @1166 has 1 MA's), (Start: 37 @1172 has 79 MA's), (52, 1286), (62, 1382), (66, 1412), (67, 1421),

Gene: Blanky_8 Start: 3827, Stop: 4276, Start Num: 26

Candidate Starts for Blanky_8:

(3, 3689), (4, 3701), (7, 3731), (8, 3737), (Start: 26 @3827 has 1 MA's), (Start: 29 @3836 has 1 MA's), (Start: 33 @3854 has 1 MA's), (Start: 36 @3863 has 14 MA's), (66, 4106), (67, 4115), (75, 4169), (77, 4178),

Gene: BluerMoon_12 Start: 6221, Stop: 6631, Start Num: 37

Candidate Starts for BluerMoon_12:

(3, 6044), (9, 6095), (12, 6116), (22, 6167), (Start: 26 @6182 has 1 MA's), (Start: 33 @6209 has 1 MA's), (Start: 37 @6221 has 79 MA's), (44, 6266), (66, 6461), (67, 6470), (69, 6488), (75, 6524),

Gene: Boog_3 Start: 1003, Stop: 1443, Start Num: 38

Candidate Starts for Boog_3:

(Start: 38 @1003 has 90 MA's), (65, 1237), (66, 1246), (67, 1255), (78, 1363), (83, 1381), (84, 1405),

Gene: Bouchard_2 Start: 968, Stop: 1375, Start Num: 38

Candidate Starts for Bouchard_2:

(Start: 24 @935 has 3 MA's), (31, 956), (Start: 35 @959 has 6 MA's), (Start: 36 @962 has 14 MA's), (Start: 38 @968 has 90 MA's), (50, 1052), (52, 1079), (66, 1205), (67, 1214), (77, 1277),

Gene: Bowling_4 Start: 1076, Stop: 1483, Start Num: 38

Candidate Starts for Bowling_4:

(Start: 38 @1076 has 90 MA's), (52, 1187), (53, 1226), (57, 1253), (66, 1313), (67, 1322), (74, 1367),

Gene: Breylor17_2 Start: 1109, Stop: 1516, Start Num: 38

Candidate Starts for Breylor17_2:

(Start: 24 @1079 has 3 MA's), (Start: 38 @1109 has 90 MA's), (52, 1220), (66, 1346), (67, 1355), (82, 1478),

Gene: BronxBay_3 Start: 1002, Stop: 1442, Start Num: 38

Candidate Starts for BronxBay_3:

(Start: 38 @1002 has 90 MA's), (65, 1236), (66, 1245), (67, 1254), (78, 1362), (83, 1380), (84, 1404),

Gene: Brunswick_2 Start: 1118, Stop: 1525, Start Num: 38

Candidate Starts for Brunswick_2:

(Start: 24 @1088 has 3 MA's), (Start: 38 @1118 has 90 MA's), (52, 1229), (66, 1355), (67, 1364), (82, 1487),

Gene: Bugg_9 Start: 3393, Stop: 3800, Start Num: 38

Candidate Starts for Bugg_9:

(3, 3213), (4, 3225), (17, 3309), (20, 3327), (Start: 26 @3351 has 1 MA's), (Start: 38 @3393 has 90 MA's), (59, 3582), (66, 3630), (67, 3639), (75, 3693),

Gene: Burley_12 Start: 6018, Stop: 6428, Start Num: 37

Candidate Starts for Burley_12:

(7, 5883), (9, 5892), (17, 5937), (19, 5949), (22, 5964), (Start: 26 @5979 has 1 MA's), (Start: 33 @6006 has 1 MA's), (Start: 34 @6009 has 1 MA's), (Start: 37 @6018 has 79 MA's), (44, 6063), (57, 6198), (66, 6258), (67, 6267), (75, 6321),

Gene: CWormy_11 Start: 4990, Stop: 5355, Start Num: 44

Candidate Starts for CWormy_11:

(17, 4864), (19, 4876), (22, 4891), (Start: 26 @4906 has 1 MA's), (Start: 33 @4933 has 1 MA's), (Start: 37 @4945 has 79 MA's), (44, 4990), (66, 5185), (67, 5194), (75, 5248),

Gene: Camille_7 Start: 2602, Stop: 3036, Start Num: 36

Candidate Starts for Camille_7:

(Start: 34 @2596 has 1 MA's), (Start: 36 @2602 has 14 MA's), (39, 2629), (50, 2692), (52, 2719), (60, 2803), (67, 2854), (68, 2860), (71, 2887), (78, 2962), (81, 2971), (83, 2980), (86, 3019),

Gene: CapnMurica_3 Start: 2361, Stop: 2768, Start Num: 38

Candidate Starts for CapnMurica_3:

(Start: 24 @2331 has 3 MA's), (Start: 38 @2361 has 90 MA's), (52, 2472), (66, 2598), (67, 2607), (82, 2730),

Gene: Captrips_8 Start: 3383, Stop: 3790, Start Num: 38

Candidate Starts for Captrips_8:

(3, 3203), (4, 3215), (7, 3245), (17, 3299), (19, 3311), (22, 3326), (Start: 26 @3341 has 1 MA's), (Start: 38 @3383 has 90 MA's), (59, 3572), (66, 3620), (67, 3629), (75, 3683),

Gene: Capybara_8 Start: 3096, Stop: 3503, Start Num: 38

Candidate Starts for Capybara_8:

(3, 2916), (4, 2928), (7, 2958), (17, 3012), (19, 3024), (20, 3030), (22, 3039), (Start: 26 @3054 has 1 MA's), (Start: 38 @3096 has 90 MA's), (45, 3156), (59, 3285), (66, 3333), (67, 3342), (75, 3396),

Gene: CastorTray_3 Start: 963, Stop: 1370, Start Num: 38

Candidate Starts for CastorTray_3:

(Start: 24 @933 has 3 MA's), (Start: 38 @963 has 90 MA's), (52, 1074), (66, 1200), (67, 1209), (82, 1332),

Gene: Caterpillar_3 Start: 1189, Stop: 1599, Start Num: 37

Candidate Starts for Caterpillar_3:

(Start: 37 @1189 has 79 MA's), (52, 1303), (58, 1375), (66, 1429), (67, 1438), (69, 1456), (82, 1561),

Gene: Cheesy_4 Start: 1076, Stop: 1483, Start Num: 38

Candidate Starts for Cheesy_4:

(Start: 38 @1076 has 90 MA's), (53, 1226), (66, 1313), (67, 1322), (74, 1367), (77, 1385),

Gene: ChickyNuggy_8 Start: 3098, Stop: 3505, Start Num: 38

Candidate Starts for ChickyNuggy_8:

(3, 2918), (4, 2930), (17, 3014), (20, 3032), (Start: 26 @3056 has 1 MA's), (Start: 38 @3098 has 90 MA's), (59, 3287), (66, 3335), (67, 3344), (75, 3398),

Gene: Chikenjars_12 Start: 6218, Stop: 6628, Start Num: 37

Candidate Starts for Chikenjars_12:

(3, 6041), (9, 6092), (12, 6113), (17, 6137), (22, 6164), (Start: 26 @6179 has 1 MA's), (Start: 33 @6206 has 1 MA's), (Start: 37 @6218 has 79 MA's), (44, 6263), (60, 6416), (66, 6458), (67, 6467), (75, 6521),

Gene: Chlochlo_2 Start: 969, Stop: 1376, Start Num: 38

Candidate Starts for Chlochlo_2:

(Start: 24 @936 has 3 MA's), (31, 957), (Start: 35 @960 has 6 MA's), (Start: 36 @963 has 14 MA's), (Start: 38 @969 has 90 MA's), (50, 1053), (52, 1080), (66, 1206), (67, 1215), (77, 1278),

Gene: Circum_4 Start: 1076, Stop: 1483, Start Num: 38

Candidate Starts for Circum_4:

(Start: 38 @1076 has 90 MA's), (53, 1226), (66, 1313), (67, 1322), (74, 1367), (77, 1385),

Gene: Citrus_11 Start: 6225, Stop: 6635, Start Num: 37

Candidate Starts for Citrus_11:

(3, 6048), (9, 6099), (12, 6120), (17, 6144), (22, 6171), (Start: 26 @6186 has 1 MA's), (Start: 33 @6213 has 1 MA's), (Start: 37 @6225 has 79 MA's), (44, 6270), (60, 6423), (66, 6465), (67, 6474), (75, 6528),

Gene: ClubPenguin_2 Start: 452, Stop: 862, Start Num: 37

Candidate Starts for ClubPenguin_2:

(Start: 29 @422 has 1 MA's), (Start: 37 @452 has 79 MA's), (52, 566), (59, 644), (66, 692), (67, 701), (75, 755), (77, 764), (78, 809),

Gene: Conley_8 Start: 3411, Stop: 3818, Start Num: 38

Candidate Starts for Conley_8:

(3, 3231), (17, 3327), (19, 3339), (20, 3345), (Start: 26 @3369 has 1 MA's), (Start: 38 @3411 has 90 MA's), (59, 3600), (66, 3648), (67, 3657), (75, 3711), (77, 3720),

Gene: Correa_4 Start: 1076, Stop: 1483, Start Num: 38

Candidate Starts for Correa_4:

(Start: 38 @1076 has 90 MA's), (53, 1226), (66, 1313), (67, 1322), (74, 1367), (77, 1385),

Gene: Count_8 Start: 3025, Stop: 3444, Start Num: 34

Candidate Starts for Count_8:

(15, 2950), (17, 2959), (19, 2971), (Start: 34 @3025 has 1 MA's), (Start: 37 @3034 has 79 MA's), (42, 3067), (45, 3097), (64, 3262), (67, 3283), (71, 3316), (83, 3409),

Gene: CricKo_2 Start: 524, Stop: 937, Start Num: 35

Candidate Starts for CricKo_2:

(7, 401), (Start: 24 @491 has 3 MA's), (Start: 35 @524 has 6 MA's), (52, 641), (55, 692), (59, 719), (69, 794),

Gene: Crocheter_11 Start: 4945, Stop: 5355, Start Num: 37

Candidate Starts for Crocheter_11:

(17, 4864), (19, 4876), (22, 4891), (Start: 26 @4906 has 1 MA's), (Start: 33 @4933 has 1 MA's), (Start: 37 @4945 has 79 MA's), (44, 4990), (66, 5185), (67, 5194), (75, 5248),

Gene: Daddyjeff_7 Start: 2954, Stop: 3370, Start Num: 36

Candidate Starts for Daddyjeff_7:

(1, 2687), (2, 2702), (13, 2861), (18, 2882), (20, 2897), (23, 2912), (Start: 36 @2954 has 14 MA's), (47, 3026), (56, 3128), (59, 3149), (61, 3164), (66, 3197), (67, 3206),

Gene: Damascus_7 Start: 2601, Stop: 3011, Start Num: 36

Candidate Starts for Damascus_7:

(22, 2556), (30, 2583), (Start: 36 @2601 has 14 MA's), (52, 2715), (53, 2754), (59, 2793), (67, 2850), (68, 2856), (71, 2883), (72, 2886), (85, 3003),

Gene: Dancer_8 Start: 3086, Stop: 3493, Start Num: 38

Candidate Starts for Dancer_8:

(3, 2909), (4, 2921), (17, 3005), (19, 3017), (20, 3023), (Start: 26 @3047 has 1 MA's), (Start: 33 @3074 has 1 MA's), (Start: 34 @3077 has 1 MA's), (Start: 37 @3083 has 79 MA's), (Start: 38 @3086 has 90 MA's), (59, 3275), (66, 3323), (67, 3332), (75, 3386),

Gene: Darby_2 Start: 966, Stop: 1373, Start Num: 38

Candidate Starts for Darby_2:

(Start: 24 @936 has 3 MA's), (Start: 38 @966 has 90 MA's), (52, 1077), (66, 1203), (67, 1212), (82, 1335),

Gene: DevitoJr_2 Start: 1108, Stop: 1515, Start Num: 38

Candidate Starts for DevitoJr_2:

(Start: 24 @1078 has 3 MA's), (Start: 38 @1108 has 90 MA's), (52, 1219), (66, 1345), (67, 1354), (82, 1477),

Gene: Dialga_11 Start: 4906, Stop: 5355, Start Num: 26

Candidate Starts for Dialga_11:

(9, 4819), (17, 4864), (19, 4876), (22, 4891), (Start: 26 @4906 has 1 MA's), (Start: 33 @4933 has 1 MA's), (Start: 37 @4945 has 79 MA's), (45, 5008), (66, 5185), (67, 5194), (75, 5248),

Gene: Dinallo_3 Start: 2361, Stop: 2768, Start Num: 38

Candidate Starts for Dinallo_3:

(Start: 24 @2331 has 3 MA's), (Start: 38 @2361 has 90 MA's), (52, 2472), (66, 2598), (67, 2607), (82, 2730),

Gene: Ditters_2 Start: 494, Stop: 901, Start Num: 37

Candidate Starts for Ditters_2:

(Start: 24 @449 has 3 MA's), (Start: 29 @464 has 1 MA's), (Start: 37 @494 has 79 MA's), (52, 605), (66, 731), (67, 740),

Gene: DizzyRudy_7 Start: 2599, Stop: 3009, Start Num: 36

Candidate Starts for DizzyRudy_7:

(22, 2554), (30, 2581), (Start: 36 @2599 has 14 MA's), (52, 2713), (53, 2752), (59, 2791), (67, 2848), (68, 2854), (71, 2881), (72, 2884), (85, 3001),

Gene: Djungelskog_3 Start: 1002, Stop: 1442, Start Num: 38

Candidate Starts for Djungelskog_3:

(Start: 38 @1002 has 90 MA's), (65, 1236), (66, 1245), (67, 1254), (78, 1362), (83, 1380), (84, 1404),

Gene: DoctorPepper_3 Start: 1002, Stop: 1442, Start Num: 38

Candidate Starts for DoctorPepper_3:

(Start: 38 @1002 has 90 MA's), (65, 1236), (66, 1245), (67, 1254), (78, 1362), (83, 1380), (84, 1404),

Gene: Doxi13_2 Start: 483, Stop: 890, Start Num: 37

Candidate Starts for Doxi13_2:

(Start: 24 @438 has 3 MA's), (Start: 29 @453 has 1 MA's), (Start: 37 @483 has 79 MA's), (43, 516), (52, 594), (59, 672), (66, 720), (67, 729),

Gene: DrGrey_2 Start: 485, Stop: 892, Start Num: 37

Candidate Starts for DrGrey_2:

(13, 395), (Start: 37 @485 has 79 MA's), (49, 563),

Gene: Duffington_12 Start: 6203, Stop: 6613, Start Num: 37

Candidate Starts for Duffington_12:

(3, 6026), (9, 6077), (12, 6098), (17, 6122), (22, 6149), (Start: 26 @6164 has 1 MA's), (Start: 33 @6191 has 1 MA's), (Start: 37 @6203 has 79 MA's), (44, 6248), (60, 6401), (66, 6443), (67, 6452), (75, 6506),

Gene: Dynamite_4 Start: 1076, Stop: 1483, Start Num: 38

Candidate Starts for Dynamite_4:

(Start: 38 @1076 has 90 MA's), (52, 1187), (53, 1226), (57, 1253), (66, 1313), (67, 1322), (74, 1367),

Gene: Eddiemania_11 Start: 5410, Stop: 5820, Start Num: 37

Candidate Starts for Eddiemania_11:

(3, 5233), (9, 5284), (12, 5305), (22, 5356), (Start: 26 @5371 has 1 MA's), (Start: 33 @5398 has 1 MA's), (Start: 37 @5410 has 79 MA's), (44, 5455), (66, 5650), (67, 5659), (75, 5713),

Gene: Eevee_6 Start: 2497, Stop: 2919, Start Num: 37

Candidate Starts for Eevee_6:

(Start: 24 @2455 has 3 MA's), (27, 2467), (Start: 35 @2491 has 6 MA's), (Start: 37 @2497 has 79 MA's), (56, 2668), (59, 2689), (60, 2695), (66, 2737), (67, 2746), (73, 2785), (77, 2809),

Gene: Egad_3 Start: 1003, Stop: 1443, Start Num: 38

Candidate Starts for Egad_3:

(Start: 38 @1003 has 90 MA's), (65, 1237), (66, 1246), (67, 1255), (78, 1363), (83, 1381), (84, 1405),

Gene: ElephantMan_2 Start: 1121, Stop: 1528, Start Num: 38

Candidate Starts for ElephantMan_2:

(Start: 24 @1091 has 3 MA's), (Start: 38 @1121 has 90 MA's), (52, 1232), (66, 1358), (67, 1367), (82, 1490),

Gene: Elsa_4 Start: 1466, Stop: 1873, Start Num: 38

Candidate Starts for Elsa_4:

(Start: 38 @1466 has 90 MA's), (57, 1643), (66, 1703), (67, 1712), (74, 1757), (77, 1775),

Gene: Elver_7 Start: 2230, Stop: 2646, Start Num: 37

Candidate Starts for Elver_7:

(5, 2089), (6, 2104), (8, 2116), (22, 2191), (Start: 24 @2200 has 3 MA's), (Start: 37 @2230 has 79 MA's), (41, 2260), (45, 2293), (66, 2476), (67, 2485),

Gene: EndAve_12 Start: 6218, Stop: 6628, Start Num: 37

Candidate Starts for EndAve_12:

(3, 6041), (12, 6113), (17, 6137), (22, 6164), (Start: 26 @6179 has 1 MA's), (Start: 33 @6206 has 1 MA's), (Start: 37 @6218 has 79 MA's), (44, 6263), (60, 6416), (66, 6458), (67, 6467), (75, 6521),

Gene: Esketit_2 Start: 485, Stop: 892, Start Num: 37

Candidate Starts for Esketit_2:

(Start: 37 @485 has 79 MA's), (49, 563),

Gene: Espio_2 Start: 485, Stop: 892, Start Num: 37

Candidate Starts for Espio_2:

(13, 395), (Start: 37 @485 has 79 MA's), (49, 563),

Gene: Fazel_9 Start: 4950, Stop: 5363, Start Num: 36

Candidate Starts for Fazel_9:

(Start: 34 @4944 has 1 MA's), (Start: 36 @4950 has 14 MA's), (39, 4977), (66, 5193), (67, 5202), (75, 5256), (77, 5265),

Gene: Figliar_12 Start: 6227, Stop: 6637, Start Num: 37

Candidate Starts for Figliar_12:

(3, 6050), (9, 6101), (12, 6122), (22, 6173), (Start: 26 @6188 has 1 MA's), (Start: 33 @6215 has 1 MA's), (Start: 37 @6227 has 79 MA's), (44, 6272), (66, 6467), (67, 6476), (69, 6494), (75, 6530),

Gene: Football_8 Start: 3098, Stop: 3505, Start Num: 38

Candidate Starts for Football_8:

(3, 2918), (4, 2930), (17, 3014), (20, 3032), (Start: 26 @3056 has 1 MA's), (Start: 38 @3098 has 90 MA's), (59, 3287), (66, 3335), (67, 3344), (75, 3398),

Gene: FortCran_8 Start: 3380, Stop: 3787, Start Num: 38

Candidate Starts for FortCran_8:

(3, 3203), (4, 3215), (17, 3299), (19, 3311), (20, 3317), (Start: 26 @3341 has 1 MA's), (Start: 33 @3368 has 1 MA's), (Start: 34 @3371 has 1 MA's), (Start: 37 @3377 has 79 MA's), (Start: 38 @3380 has 90 MA's), (59, 3569), (66, 3617), (67, 3626), (75, 3680),

Gene: FrodoSwaggins_2 Start: 485, Stop: 892, Start Num: 37

Candidate Starts for FrodoSwaggins_2:

(13, 395), (Start: 37 @485 has 79 MA's), (49, 563),

Gene: FromIndy_2 Start: 524, Stop: 937, Start Num: 35

Candidate Starts for FromIndy_2:

(7, 401), (Start: 24 @491 has 3 MA's), (Start: 35 @524 has 6 MA's), (52, 641), (55, 692), (59, 719), (69, 794),

Gene: Gandionco_6 Start: 2229, Stop: 2645, Start Num: 37

Candidate Starts for Gandionco_6:

(5, 2088), (6, 2103), (8, 2115), (10, 2127), (17, 2163), (22, 2190), (Start: 37 @2229 has 79 MA's), (41, 2259), (45, 2292), (57, 2409), (66, 2475), (67, 2484),

Gene: GantcherGoblin_2 Start: 805, Stop: 1215, Start Num: 37

Candidate Starts for GantcherGoblin_2:

(12, 712), (17, 736), (22, 763), (Start: 33 @799 has 1 MA's), (Start: 37 @805 has 79 MA's), (52, 919), (62, 1015), (66, 1045), (67, 1054),

Gene: GermyBearimy_3 Start: 1282, Stop: 1716, Start Num: 38

Candidate Starts for GermyBearimy_3:

(25, 1249), (28, 1258), (Start: 38 @1282 has 90 MA's), (59, 1471), (66, 1519), (67, 1528), (77, 1591), (79, 1639),

Gene: Giantsbane_2 Start: 969, Stop: 1376, Start Num: 38

Candidate Starts for Giantsbane_2:

(Start: 24 @936 has 3 MA's), (Start: 35 @960 has 6 MA's), (Start: 36 @963 has 14 MA's), (Start: 38 @969 has 90 MA's), (50, 1053), (52, 1080), (66, 1206), (67, 1215),

Gene: Gill_8 Start: 3096, Stop: 3503, Start Num: 38

Candidate Starts for Gill_8:

(3, 2916), (4, 2928), (7, 2958), (17, 3012), (19, 3024), (20, 3030), (22, 3039), (Start: 26 @3054 has 1 MA's), (Start: 38 @3096 has 90 MA's), (45, 3156), (59, 3285), (66, 3333), (67, 3342), (75, 3396),

Gene: GirlPower_2 Start: 1348, Stop: 1758, Start Num: 37

Candidate Starts for GirlPower_2:

(Start: 37 @1348 has 79 MA's), (75, 1651),

Gene: Glintora_11 Start: 6263, Stop: 6628, Start Num: 44

Candidate Starts for Glintora_11:

(3, 6041), (9, 6092), (12, 6113), (17, 6137), (22, 6164), (Start: 26 @6179 has 1 MA's), (Start: 33 @6206 has 1 MA's), (Start: 37 @6218 has 79 MA's), (44, 6263), (60, 6416), (66, 6458), (67, 6467), (75, 6521),

Gene: GoCrazy_3 Start: 1076, Stop: 1483, Start Num: 38

Candidate Starts for GoCrazy_3:

(Start: 38 @1076 has 90 MA's), (53, 1226), (66, 1313), (67, 1322), (74, 1367), (77, 1385),

Gene: GoblinVoyage_2 Start: 483, Stop: 890, Start Num: 37

Candidate Starts for GoblinVoyage_2:

(Start: 24 @438 has 3 MA's), (Start: 29 @453 has 1 MA's), (Start: 37 @483 has 79 MA's), (43, 516), (52, 594), (59, 672), (66, 720), (67, 729),

Gene: Gordon_2 Start: 962, Stop: 1369, Start Num: 38

Candidate Starts for Gordon_2:

(Start: 24 @932 has 3 MA's), (Start: 38 @962 has 90 MA's), (52, 1073), (66, 1199), (67, 1208), (82, 1331),

Gene: Gravy_8 Start: 3096, Stop: 3503, Start Num: 38

Candidate Starts for Gravy_8:

(3, 2916), (4, 2928), (7, 2958), (17, 3012), (19, 3024), (20, 3030), (22, 3039), (Start: 26 @3054 has 1 MA's), (Start: 38 @3096 has 90 MA's), (45, 3156), (59, 3285), (66, 3333), (67, 3342), (75, 3396),

Gene: Gusicorn_12 Start: 6017, Stop: 6427, Start Num: 37

Candidate Starts for Gusicorn_12:

(7, 5882), (9, 5891), (17, 5936), (19, 5948), (22, 5963), (Start: 26 @5978 has 1 MA's), (Start: 33 @6005 has 1 MA's), (Start: 37 @6017 has 79 MA's), (44, 6062), (66, 6257), (67, 6266), (75, 6320),

Gene: Hankly_3 Start: 1076, Stop: 1483, Start Num: 38

Candidate Starts for Hankly_3:

(Start: 38 @1076 has 90 MA's), (46, 1139), (59, 1265), (66, 1313), (67, 1322), (79, 1433),

Gene: HazuAndZazu_2 Start: 485, Stop: 892, Start Num: 37

Candidate Starts for HazuAndZazu_2:

(Start: 37 @485 has 79 MA's), (42, 515), (49, 563),

Gene: Heisenberger_4 Start: 1076, Stop: 1483, Start Num: 38

Candidate Starts for Heisenberger_4:

(Start: 38 @1076 has 90 MA's), (53, 1226), (66, 1313), (67, 1322), (74, 1367), (77, 1385),

Gene: Hemma_3 Start: 750, Stop: 1160, Start Num: 37

Candidate Starts for Hemma_3:

(Start: 24 @723 has 3 MA's), (Start: 37 @750 has 79 MA's), (42, 783), (49, 831), (52, 864), (66, 990), (67, 999), (76, 1059), (77, 1062), (82, 1122),

Gene: HerbBucket_3 Start: 1003, Stop: 1443, Start Num: 38

Candidate Starts for HerbBucket_3:

(Start: 38 @1003 has 90 MA's), (65, 1237), (66, 1246), (67, 1255), (78, 1363), (83, 1381), (84, 1405),

Gene: Hortihabitatio_11 Start: 5306, Stop: 5719, Start Num: 36

Candidate Starts for Hortihabitatio_11:

(Start: 26 @5270 has 1 MA's), (Start: 33 @5297 has 1 MA's), (Start: 36 @5306 has 14 MA's), (66, 5549), (67, 5558), (75, 5612),

Gene: HotFries_2 Start: 438, Stop: 890, Start Num: 24

Candidate Starts for HotFries_2:

(20, 420), (Start: 24 @438 has 3 MA's), (Start: 29 @453 has 1 MA's), (Start: 37 @483 has 79 MA's), (43, 516), (48, 558), (52, 594), (66, 720), (67, 729),

Gene: Hydrus_11 Start: 5203, Stop: 5613, Start Num: 37

Candidate Starts for Hydrus_11:

(17, 5122), (19, 5134), (22, 5149), (Start: 26 @5164 has 1 MA's), (Start: 33 @5191 has 1 MA's), (Start: 37 @5203 has 79 MA's), (44, 5248), (57, 5383), (66, 5443), (67, 5452), (75, 5506),

Gene: Ingrid_2 Start: 960, Stop: 1397, Start Num: 24

Candidate Starts for Ingrid_2:

(Start: 24 @960 has 3 MA's), (Start: 37 @987 has 79 MA's), (52, 1101), (66, 1227), (67, 1236),

Gene: Inked_3 Start: 1227, Stop: 1634, Start Num: 38

Candidate Starts for Inked_3:

(Start: 24 @1197 has 3 MA's), (Start: 38 @1227 has 90 MA's), (52, 1338), (66, 1464), (67, 1473), (69, 1491),

Gene: Issa_2 Start: 1109, Stop: 1516, Start Num: 38

Candidate Starts for Issa_2:

(Start: 24 @1079 has 3 MA's), (Start: 38 @1109 has 90 MA's), (52, 1220), (66, 1346), (67, 1355), (82, 1478),

Gene: JEGGS_4 Start: 1078, Stop: 1485, Start Num: 38

Candidate Starts for JEGGS_4:

(Start: 38 @1078 has 90 MA's), (53, 1228), (66, 1315), (67, 1324), (74, 1369), (77, 1387),

Gene: Jazzy4900_5 Start: 1560, Stop: 1994, Start Num: 38
Candidate Starts for Jazzy4900_5:
(28, 1536), (Start: 38 @1560 has 90 MA's), (57, 1737), (66, 1797), (67, 1806), (77, 1869), (79, 1917),
(83, 1932),

Gene: JeNeSaisPas_5 Start: 1742, Stop: 2158, Start Num: 37
Candidate Starts for JeNeSaisPas_5:
(5, 1601), (6, 1616), (8, 1628), (10, 1640), (11, 1649), (17, 1676), (20, 1694), (Start: 24 @1712 has 3
MA's), (Start: 37 @1742 has 79 MA's), (45, 1805), (66, 1988), (67, 1997), (73, 2036), (79, 2108),

Gene: Jeremy4pt0_3 Start: 1002, Stop: 1442, Start Num: 38
Candidate Starts for Jeremy4pt0_3:
(Start: 38 @1002 has 90 MA's), (65, 1236), (66, 1245), (67, 1254), (78, 1362), (83, 1380), (84, 1404),

Gene: Jodelie19_12 Start: 6221, Stop: 6631, Start Num: 37
Candidate Starts for Jodelie19_12:
(3, 6044), (9, 6095), (12, 6116), (22, 6167), (Start: 26 @6182 has 1 MA's), (Start: 33 @6209 has 1
MA's), (Start: 36 @6218 has 14 MA's), (Start: 37 @6221 has 79 MA's), (44, 6266), (66, 6461), (67,
6470), (69, 6488), (75, 6524),

Gene: JoyLin_6 Start: 2497, Stop: 2919, Start Num: 37
Candidate Starts for JoyLin_6:
(Start: 24 @2455 has 3 MA's), (27, 2467), (Start: 35 @2491 has 6 MA's), (Start: 37 @2497 has 79
MA's), (56, 2668), (59, 2689), (60, 2695), (66, 2737), (67, 2746), (73, 2785), (77, 2809),

Gene: JulesRay_8 Start: 3380, Stop: 3787, Start Num: 38
Candidate Starts for JulesRay_8:
(3, 3203), (4, 3215), (17, 3299), (19, 3311), (20, 3317), (Start: 26 @3341 has 1 MA's), (Start: 33 @3368
has 1 MA's), (Start: 34 @3371 has 1 MA's), (Start: 37 @3377 has 79 MA's), (Start: 38 @3380 has 90
MA's), (59, 3569), (66, 3617), (67, 3626), (75, 3680),

Gene: Kardashian_2 Start: 561, Stop: 968, Start Num: 37
Candidate Starts for Kardashian_2:
(22, 513), (Start: 37 @561 has 79 MA's), (75, 861), (78, 915),

Gene: Kardesai_3 Start: 1076, Stop: 1483, Start Num: 38
Candidate Starts for Kardesai_3:
(Start: 38 @1076 has 90 MA's), (52, 1187), (53, 1226), (66, 1313), (67, 1322), (74, 1367), (77, 1385),

Gene: KeaneyLin_3 Start: 1076, Stop: 1483, Start Num: 38
Candidate Starts for KeaneyLin_3:
(Start: 38 @1076 has 90 MA's), (53, 1226), (66, 1313), (67, 1322), (74, 1367), (77, 1385),

Gene: Kenosha_9 Start: 3804, Stop: 4214, Start Num: 37
Candidate Starts for Kenosha_9:
(9, 3678), (17, 3723), (19, 3735), (22, 3750), (Start: 26 @3765 has 1 MA's), (Start: 33 @3792 has 1
MA's), (Start: 37 @3804 has 79 MA's), (44, 3849), (66, 4044), (67, 4053), (75, 4107),

Gene: Kerry_8 Start: 3096, Stop: 3503, Start Num: 38
Candidate Starts for Kerry_8:
(3, 2916), (4, 2928), (7, 2958), (17, 3012), (19, 3024), (20, 3030), (22, 3039), (Start: 26 @3054 has 1
MA's), (Start: 38 @3096 has 90 MA's), (45, 3156), (59, 3285), (66, 3333), (67, 3342), (75, 3396),

Gene: KevinMinion_2 Start: 961, Stop: 1371, Start Num: 37

Candidate Starts for KevinMinion_2:

(12, 868), (17, 892), (22, 919), (Start: 24 @928 has 3 MA's), (Start: 33 @955 has 1 MA's), (Start: 37 @961 has 79 MA's), (52, 1075), (62, 1171), (66, 1201), (67, 1210),

Gene: Kinny_3 Start: 1095, Stop: 1511, Start Num: 33

Candidate Starts for Kinny_3:

(11, 1005), (16, 1029), (22, 1059), (Start: 24 @1068 has 3 MA's), (Start: 33 @1095 has 1 MA's), (Start: 37 @1101 has 79 MA's), (66, 1341), (67, 1350), (78, 1458), (79, 1461), (83, 1476), (85, 1503),

Gene: Kureo_8 Start: 3459, Stop: 3875, Start Num: 37

Candidate Starts for Kureo_8:

(5, 3318), (6, 3333), (8, 3345), (10, 3357), (17, 3393), (22, 3420), (Start: 37 @3459 has 79 MA's), (41, 3489), (45, 3522), (66, 3705), (67, 3714),

Gene: Lewando_3 Start: 1100, Stop: 1510, Start Num: 37

Candidate Starts for Lewando_3:

(11, 1004), (16, 1028), (22, 1058), (Start: 24 @1067 has 3 MA's), (Start: 33 @1094 has 1 MA's), (Start: 37 @1100 has 79 MA's), (66, 1340), (67, 1349), (78, 1457), (79, 1460), (83, 1475), (85, 1502),

Gene: LibertyBell_2 Start: 486, Stop: 896, Start Num: 36

Candidate Starts for LibertyBell_2:

(Start: 24 @459 has 3 MA's), (27, 471), (Start: 36 @486 has 14 MA's), (48, 564),

Gene: LilHuddy_2 Start: 969, Stop: 1376, Start Num: 38

Candidate Starts for LilHuddy_2:

(Start: 35 @960 has 6 MA's), (Start: 36 @963 has 14 MA's), (Start: 38 @969 has 90 MA's), (50, 1053), (52, 1080), (66, 1206), (67, 1215), (77, 1278),

Gene: Linda_3 Start: 1002, Stop: 1442, Start Num: 38

Candidate Starts for Linda_3:

(Start: 38 @1002 has 90 MA's), (65, 1236), (66, 1245), (67, 1254), (78, 1362), (83, 1380), (84, 1404),

Gene: Loretta_2 Start: 960, Stop: 1397, Start Num: 24

Candidate Starts for Loretta_2:

(Start: 24 @960 has 3 MA's), (Start: 37 @987 has 79 MA's), (52, 1101), (66, 1227), (67, 1236),

Gene: LucySwiss_2 Start: 1128, Stop: 1535, Start Num: 38

Candidate Starts for LucySwiss_2:

(Start: 24 @1098 has 3 MA's), (Start: 38 @1128 has 90 MA's), (52, 1239), (66, 1365), (67, 1374), (82, 1497),

Gene: Madamoto_2 Start: 486, Stop: 893, Start Num: 37

Candidate Starts for Madamoto_2:

(30, 468), (Start: 37 @486 has 79 MA's),

Gene: Madvan_12 Start: 6018, Stop: 6428, Start Num: 37

Candidate Starts for Madvan_12:

(9, 5892), (17, 5937), (19, 5949), (22, 5964), (Start: 26 @5979 has 1 MA's), (Start: 33 @6006 has 1 MA's), (Start: 37 @6018 has 79 MA's), (44, 6063), (66, 6258), (67, 6267), (75, 6321),

Gene: Magel_8 Start: 3096, Stop: 3503, Start Num: 38

Candidate Starts for Magel_8:

(3, 2916), (4, 2928), (17, 3012), (19, 3024), (20, 3030), (22, 3039), (Start: 26 @3054 has 1 MA's), (Start: 38 @3096 has 90 MA's), (45, 3156), (59, 3285), (66, 3333), (67, 3342), (75, 3396),

Gene: MajinBuu_12 Start: 6222, Stop: 6632, Start Num: 37

Candidate Starts for MajinBuu_12:

(3, 6045), (9, 6096), (12, 6117), (22, 6168), (Start: 26 @6183 has 1 MA's), (Start: 33 @6210 has 1 MA's), (Start: 37 @6222 has 79 MA's), (44, 6267), (66, 6462), (67, 6471), (69, 6489), (75, 6525),

Gene: Makai_2 Start: 1049, Stop: 1456, Start Num: 38

Candidate Starts for Makai_2:

(Start: 24 @1019 has 3 MA's), (31, 1040), (Start: 36 @1043 has 14 MA's), (Start: 38 @1049 has 90 MA's), (52, 1160), (54, 1208), (66, 1286), (67, 1295), (77, 1358),

Gene: Mardi_3 Start: 1110, Stop: 1520, Start Num: 37

Candidate Starts for Mardi_3:

(12, 1017), (17, 1041), (22, 1068), (Start: 24 @1077 has 3 MA's), (Start: 33 @1104 has 1 MA's), (Start: 37 @1110 has 79 MA's), (52, 1224), (62, 1320), (66, 1350), (67, 1359),

Gene: Marianna39_7 Start: 2229, Stop: 2645, Start Num: 37

Candidate Starts for Marianna39_7:

(5, 2088), (6, 2103), (8, 2115), (10, 2127), (17, 2163), (22, 2190), (Start: 37 @2229 has 79 MA's), (41, 2259), (45, 2292), (57, 2409), (66, 2475), (67, 2484),

Gene: Maya_2 Start: 485, Stop: 892, Start Num: 37

Candidate Starts for Maya_2:

(Start: 37 @485 has 79 MA's), (49, 563), (72, 767),

Gene: MediumFry_3 Start: 1218, Stop: 1628, Start Num: 37

Candidate Starts for MediumFry_3:

(Start: 37 @1218 has 79 MA's), (52, 1332), (58, 1404), (66, 1458), (67, 1467), (69, 1485), (82, 1590),

Gene: Mema_7 Start: 3476, Stop: 3916, Start Num: 36

Candidate Starts for Mema_7:

(Start: 34 @3470 has 1 MA's), (Start: 36 @3476 has 14 MA's), (51, 3569), (52, 3593), (53, 3632), (67, 3728), (71, 3761),

Gene: Michelle_3 Start: 1002, Stop: 1442, Start Num: 38

Candidate Starts for Michelle_3:

(Start: 38 @1002 has 90 MA's), (65, 1236), (66, 1245), (67, 1254), (78, 1362), (83, 1380), (84, 1404),

Gene: Miek_2 Start: 524, Stop: 937, Start Num: 35

Candidate Starts for Miek_2:

(7, 401), (Start: 24 @491 has 3 MA's), (Start: 35 @524 has 6 MA's), (52, 641), (55, 692), (59, 719), (69, 794),

Gene: MiniBagel_3 Start: 2361, Stop: 2768, Start Num: 38

Candidate Starts for MiniBagel_3:

(Start: 24 @2331 has 3 MA's), (Start: 38 @2361 has 90 MA's), (52, 2472), (66, 2598), (67, 2607), (82, 2730),

Gene: Monse_2 Start: 494, Stop: 901, Start Num: 37

Candidate Starts for Monse_2:

(Start: 24 @449 has 3 MA's), (Start: 29 @464 has 1 MA's), (Start: 37 @494 has 79 MA's), (52, 605), (66, 731), (67, 740), (77, 803),

Gene: Mooshroom_4 Start: 1076, Stop: 1483, Start Num: 38

Candidate Starts for Mooshroom_4:

(Start: 38 @1076 has 90 MA's), (52, 1187), (53, 1226), (66, 1313), (67, 1322), (74, 1367), (77, 1385),

Gene: Moozy_2 Start: 483, Stop: 890, Start Num: 37

Candidate Starts for Moozy_2:

(20, 420), (Start: 24 @438 has 3 MA's), (Start: 29 @453 has 1 MA's), (Start: 37 @483 has 79 MA's), (43, 516), (48, 558), (52, 594), (66, 720), (67, 729),

Gene: Mossy_9 Start: 4077, Stop: 4490, Start Num: 36

Candidate Starts for Mossy_9:

(Start: 26 @4041 has 1 MA's), (Start: 29 @4050 has 1 MA's), (Start: 33 @4068 has 1 MA's), (Start: 36 @4077 has 14 MA's), (66, 4320), (67, 4329), (75, 4383),

Gene: MrAaronian_3 Start: 1002, Stop: 1442, Start Num: 38

Candidate Starts for MrAaronian_3:

(Start: 38 @1002 has 90 MA's), (65, 1236), (66, 1245), (67, 1254), (78, 1362), (83, 1380), (84, 1404),

Gene: Mudcat_4 Start: 1075, Stop: 1482, Start Num: 38

Candidate Starts for Mudcat_4:

(Start: 38 @1075 has 90 MA's), (53, 1225), (55, 1237), (57, 1252), (66, 1312), (67, 1321), (74, 1366),

Gene: Muglass_2 Start: 791, Stop: 1207, Start Num: 33

Candidate Starts for Muglass_2:

(11, 701), (16, 725), (22, 755), (Start: 24 @764 has 3 MA's), (Start: 33 @791 has 1 MA's), (Start: 37 @797 has 79 MA's), (66, 1037), (67, 1046), (78, 1154), (79, 1157), (83, 1172), (85, 1199),

Gene: Mysticmoon_9 Start: 3780, Stop: 4193, Start Num: 36

Candidate Starts for Mysticmoon_9:

(Start: 26 @3744 has 1 MA's), (Start: 33 @3771 has 1 MA's), (Start: 36 @3780 has 14 MA's), (45, 3846), (66, 4023), (67, 4032), (75, 4086),

Gene: Nadmeg_12 Start: 6019, Stop: 6429, Start Num: 37

Candidate Starts for Nadmeg_12:

(7, 5884), (9, 5893), (17, 5938), (19, 5950), (22, 5965), (Start: 26 @5980 has 1 MA's), (Start: 33 @6007 has 1 MA's), (Start: 34 @6010 has 1 MA's), (Start: 37 @6019 has 79 MA's), (44, 6064), (57, 6199), (66, 6259), (67, 6268), (75, 6322),

Gene: NapoleonB_4 Start: 1076, Stop: 1483, Start Num: 38

Candidate Starts for NapoleonB_4:

(Start: 38 @1076 has 90 MA's), (52, 1187), (53, 1226), (57, 1253), (66, 1313), (67, 1322), (74, 1367),

Gene: Nason_4 Start: 1466, Stop: 1873, Start Num: 38

Candidate Starts for Nason_4:

(Start: 38 @1466 has 90 MA's), (57, 1643), (66, 1703), (67, 1712), (74, 1757), (77, 1775),

Gene: Natasha_2 Start: 979, Stop: 1392, Start Num: 38

Candidate Starts for Natasha_2:

(Start: 26 @949 has 1 MA's), (32, 967), (Start: 38 @979 has 90 MA's), (39, 1000), (58, 1162), (66, 1222), (67, 1231), (79, 1342), (80, 1345), (83, 1357),

Gene: Navi1117_3 Start: 1200, Stop: 1610, Start Num: 37

Candidate Starts for Navi1117_3:

(Start: 24 @1167 has 3 MA's), (Start: 33 @1194 has 1 MA's), (Start: 37 @1200 has 79 MA's), (52, 1314), (62, 1410), (66, 1440), (67, 1449),

Gene: Nightmare_2 Start: 1128, Stop: 1535, Start Num: 38

Candidate Starts for Nightmare_2:

(Start: 24 @1098 has 3 MA's), (Start: 38 @1128 has 90 MA's), (52, 1239), (66, 1365), (67, 1374), (82, 1497),

Gene: Niktson_2 Start: 1121, Stop: 1528, Start Num: 38

Candidate Starts for Niktson_2:

(Start: 24 @1091 has 3 MA's), (Start: 38 @1121 has 90 MA's), (52, 1232), (66, 1358), (67, 1367), (82, 1490),

Gene: Nithya_12 Start: 6218, Stop: 6628, Start Num: 37

Candidate Starts for Nithya_12:

(3, 6041), (9, 6092), (12, 6113), (17, 6137), (22, 6164), (Start: 26 @6179 has 1 MA's), (Start: 33 @6206 has 1 MA's), (Start: 37 @6218 has 79 MA's), (44, 6263), (60, 6416), (66, 6458), (67, 6467), (75, 6521),

Gene: Nivinsha_2 Start: 984, Stop: 1391, Start Num: 38

Candidate Starts for Nivinsha_2:

(Start: 24 @954 has 3 MA's), (Start: 38 @984 has 90 MA's), (52, 1095), (66, 1221), (67, 1230), (82, 1353),

Gene: NoPickles_8 Start: 3096, Stop: 3503, Start Num: 38

Candidate Starts for NoPickles_8:

(3, 2916), (4, 2928), (17, 3012), (19, 3024), (20, 3030), (22, 3039), (Start: 26 @3054 has 1 MA's), (Start: 38 @3096 has 90 MA's), (45, 3156), (59, 3285), (66, 3333), (67, 3342), (75, 3396),

Gene: Odesza_8 Start: 3096, Stop: 3503, Start Num: 38

Candidate Starts for Odesza_8:

(3, 2916), (4, 2928), (17, 3012), (19, 3024), (20, 3030), (Start: 26 @3054 has 1 MA's), (Start: 38 @3096 has 90 MA's), (45, 3156), (59, 3285), (66, 3333), (67, 3342), (75, 3396),

Gene: OhMyWard_12 Start: 5989, Stop: 6429, Start Num: 29

Candidate Starts for OhMyWard_12:

(3, 5842), (4, 5854), (7, 5884), (8, 5890), (Start: 26 @5980 has 1 MA's), (Start: 29 @5989 has 1 MA's), (Start: 33 @6007 has 1 MA's), (Start: 36 @6016 has 14 MA's), (66, 6259), (67, 6268), (75, 6322), (77, 6331),

Gene: OlgasClover_12 Start: 6218, Stop: 6628, Start Num: 37

Candidate Starts for OlgasClover_12:

(3, 6041), (9, 6092), (12, 6113), (22, 6164), (Start: 26 @6179 has 1 MA's), (Start: 33 @6206 has 1 MA's), (Start: 37 @6218 has 79 MA's), (44, 6263), (66, 6458), (67, 6467), (69, 6485), (75, 6521),

Gene: Onestar_2 Start: 1014, Stop: 1454, Start Num: 38

Candidate Starts for Onestar_2:

(Start: 38 @1014 has 90 MA's), (63, 1242), (66, 1257), (67, 1266), (80, 1380), (83, 1392),

Gene: Paella_7 Start: 2229, Stop: 2645, Start Num: 37

Candidate Starts for Paella_7:

(5, 2088), (6, 2103), (8, 2115), (22, 2190), (Start: 24 @2199 has 3 MA's), (Start: 37 @2229 has 79 MA's), (41, 2259), (45, 2292), (57, 2409), (66, 2475), (67, 2484),

Gene: Pepy6_009 Start: 8541, Stop: 8951, Start Num: 37

Candidate Starts for Pepy6_009:

(5, 8391), (13, 8448), (17, 8466), (22, 8493), (Start: 37 @8541 has 79 MA's), (55, 8706), (66, 8781), (67, 8790), (75, 8844), (82, 8913),

Gene: Perkunas_10 Start: 3907, Stop: 4314, Start Num: 38

Candidate Starts for Perkunas_10:

(Start: 26 @3865 has 1 MA's), (Start: 38 @3907 has 90 MA's), (45, 3967), (59, 4096), (66, 4144), (67, 4153), (75, 4207),

Gene: PerroGrande22_9 Start: 8741, Stop: 9151, Start Num: 37

Candidate Starts for PerroGrande22_9:

(Start: 33 @8735 has 1 MA's), (Start: 37 @8741 has 79 MA's), (55, 8906), (66, 8981), (67, 8990), (75, 9044), (82, 9113),

Gene: PestoPenguin_12 Start: 6017, Stop: 6427, Start Num: 37

Candidate Starts for PestoPenguin_12:

(7, 5882), (9, 5891), (17, 5936), (19, 5948), (22, 5963), (Start: 26 @5978 has 1 MA's), (Start: 33 @6005 has 1 MA's), (Start: 37 @6017 has 79 MA's), (44, 6062), (66, 6257), (67, 6266), (75, 6320),

Gene: Petito_9 Start: 3605, Stop: 4012, Start Num: 38

Candidate Starts for Petito_9:

(3, 3425), (7, 3467), (17, 3521), (20, 3539), (22, 3548), (Start: 26 @3563 has 1 MA's), (Start: 38 @3605 has 90 MA's), (59, 3794), (66, 3842), (67, 3851), (75, 3905), (77, 3914),

Gene: Phaby_2 Start: 968, Stop: 1375, Start Num: 38

Candidate Starts for Phaby_2:

(31, 956), (Start: 35 @959 has 6 MA's), (Start: 36 @962 has 14 MA's), (Start: 38 @968 has 90 MA's), (50, 1052), (52, 1079), (66, 1205), (67, 1214), (77, 1277),

Gene: Phaila_3 Start: 1074, Stop: 1484, Start Num: 37

Candidate Starts for Phaila_3:

(17, 1005), (Start: 24 @1041 has 3 MA's), (Start: 33 @1068 has 1 MA's), (Start: 37 @1074 has 79 MA's), (52, 1188), (62, 1284), (66, 1314), (67, 1323),

Gene: Phepper_12 Start: 6017, Stop: 6427, Start Num: 37

Candidate Starts for Phepper_12:

(9, 5891), (17, 5936), (19, 5948), (22, 5963), (Start: 26 @5978 has 1 MA's), (Start: 33 @6005 has 1 MA's), (Start: 37 @6017 has 79 MA's), (66, 6257), (67, 6266), (75, 6320),

Gene: Pherobrine_9 Start: 3776, Stop: 4189, Start Num: 36

Candidate Starts for Pherobrine_9:

(7, 3644), (17, 3698), (19, 3710), (22, 3725), (Start: 26 @3740 has 1 MA's), (Start: 36 @3776 has 14 MA's), (45, 3842), (66, 4019), (67, 4028),

Gene: PherryCruz_2 Start: 483, Stop: 890, Start Num: 37

Candidate Starts for PherryCruz_2:

(20, 420), (Start: 24 @438 has 3 MA's), (Start: 29 @453 has 1 MA's), (Start: 37 @483 has 79 MA's), (43, 516), (48, 558), (52, 594), (66, 720), (67, 729),

Gene: Pippin15_6 Start: 2510, Stop: 2932, Start Num: 35

Candidate Starts for Pippin15_6:

(22, 2465), (Start: 35 @2510 has 6 MA's), (Start: 38 @2519 has 90 MA's), (56, 2687), (60, 2714), (66, 2756), (67, 2765), (77, 2828), (79, 2876),

Gene: POCO6_011 Start: 11972, Stop: 12382, Start Num: 37

Candidate Starts for POCO6_011:

(Start: 33 @11966 has 1 MA's), (Start: 37 @11972 has 79 MA's), (55, 12137), (66, 12212), (67, 12221), (75, 12275), (82, 12344),

Gene: PoeMe_3 Start: 1108, Stop: 1518, Start Num: 37

Candidate Starts for PoeMe_3:

(12, 1015), (17, 1039), (Start: 24 @1075 has 3 MA's), (Start: 33 @1102 has 1 MA's), (Start: 37 @1108 has 79 MA's), (52, 1222), (66, 1348), (67, 1357),

Gene: POPY_2 Start: 485, Stop: 892, Start Num: 37

Candidate Starts for POPY_2:

(13, 395), (Start: 37 @485 has 79 MA's), (49, 563),

Gene: POWELLDog_2 Start: 1038, Stop: 1451, Start Num: 38

Candidate Starts for POWELLDog_2:

(22, 993), (Start: 24 @1002 has 3 MA's), (Start: 38 @1038 has 90 MA's), (66, 1281), (67, 1290), (79, 1401), (83, 1416),

Gene: ProfFrink_3 Start: 1002, Stop: 1442, Start Num: 38

Candidate Starts for ProfFrink_3:

(Start: 38 @1002 has 90 MA's), (65, 1236), (66, 1245), (67, 1254), (78, 1362), (83, 1380), (84, 1404),

Gene: Qui_7 Start: 2229, Stop: 2645, Start Num: 37

Candidate Starts for Qui_7:

(5, 2088), (6, 2103), (8, 2115), (22, 2190), (Start: 24 @2199 has 3 MA's), (Start: 37 @2229 has 79 MA's), (41, 2259), (45, 2292), (57, 2409), (66, 2475), (67, 2484),

Gene: Rainydai_2 Start: 524, Stop: 937, Start Num: 35

Candidate Starts for Rainydai_2:

(7, 401), (Start: 24 @491 has 3 MA's), (Start: 35 @524 has 6 MA's), (52, 641), (55, 692), (59, 719), (69, 794),

Gene: Raunak_3 Start: 1002, Stop: 1442, Start Num: 38

Candidate Starts for Raunak_3:

(Start: 38 @1002 has 90 MA's), (65, 1236), (66, 1245), (67, 1254), (78, 1362), (83, 1380), (84, 1404),

Gene: RavenPuff_2 Start: 483, Stop: 890, Start Num: 37

Candidate Starts for RavenPuff_2:

(20, 420), (Start: 24 @438 has 3 MA's), (Start: 29 @453 has 1 MA's), (Start: 37 @483 has 79 MA's), (43, 516), (48, 558), (52, 594), (66, 720), (67, 729),

Gene: Regigigas_2 Start: 524, Stop: 937, Start Num: 35

Candidate Starts for Regigigas_2:

(7, 401), (Start: 24 @491 has 3 MA's), (Start: 35 @524 has 6 MA's), (52, 641), (55, 692), (59, 719), (69, 794),

Gene: Renaldo_3 Start: 1095, Stop: 1511, Start Num: 33

Candidate Starts for Renaldo_3:

(11, 1005), (16, 1029), (22, 1059), (Start: 24 @1068 has 3 MA's), (Start: 33 @1095 has 1 MA's), (Start: 37 @1101 has 79 MA's), (66, 1341), (67, 1350), (78, 1458), (79, 1461), (83, 1476), (85, 1503),

Gene: Rickmore_11 Start: 4788, Stop: 5198, Start Num: 37

Candidate Starts for Rickmore_11:

(3, 4611), (5, 4632), (7, 4653), (12, 4683), (17, 4707), (19, 4719), (22, 4734), (Start: 26 @4749 has 1 MA's), (32, 4773), (Start: 34 @4779 has 1 MA's), (Start: 37 @4788 has 79 MA's), (57, 4968), (66, 5028), (67, 5037), (73, 5076), (75, 5091),

Gene: Roney_8 Start: 3096, Stop: 3503, Start Num: 38

Candidate Starts for Roney_8:

(3, 2916), (4, 2928), (17, 3012), (19, 3024), (20, 3030), (22, 3039), (Start: 26 @3054 has 1 MA's), (Start: 38 @3096 has 90 MA's), (45, 3156), (59, 3285), (66, 3333), (67, 3342), (75, 3396),

Gene: RosaAsantewaa_2 Start: 443, Stop: 850, Start Num: 37

Candidate Starts for RosaAsantewaa_2:

(19, 383), (Start: 37 @443 has 79 MA's), (59, 632), (67, 689), (75, 743),

Gene: Runhaar_12 Start: 6019, Stop: 6429, Start Num: 37

Candidate Starts for Runhaar_12:

(7, 5884), (9, 5893), (17, 5938), (19, 5950), (22, 5965), (Start: 26 @5980 has 1 MA's), (Start: 33 @6007 has 1 MA's), (Start: 34 @6010 has 1 MA's), (Start: 37 @6019 has 79 MA's), (44, 6064), (57, 6199), (66, 6259), (67, 6268), (75, 6322),

Gene: RustyBoy_2 Start: 979, Stop: 1392, Start Num: 38

Candidate Starts for RustyBoy_2:

(Start: 26 @949 has 1 MA's), (32, 967), (Start: 38 @979 has 90 MA's), (39, 1000), (58, 1162), (66, 1222), (67, 1231), (79, 1342), (80, 1345), (83, 1357),

Gene: Salk_3 Start: 1002, Stop: 1442, Start Num: 38

Candidate Starts for Salk_3:

(Start: 38 @1002 has 90 MA's), (65, 1236), (66, 1245), (67, 1254), (78, 1362), (83, 1380), (84, 1404),

Gene: Scap1_2 Start: 494, Stop: 901, Start Num: 37

Candidate Starts for Scap1_2:

(20, 431), (Start: 24 @449 has 3 MA's), (Start: 29 @464 has 1 MA's), (Start: 37 @494 has 79 MA's), (52, 605), (66, 731), (67, 740),

Gene: ScienceWizSam_3 Start: 939, Stop: 1346, Start Num: 38

Candidate Starts for ScienceWizSam_3:

(Start: 24 @909 has 3 MA's), (Start: 38 @939 has 90 MA's), (52, 1050), (66, 1176), (67, 1185), (82, 1308),

Gene: Secretariat_8 Start: 3865, Stop: 4275, Start Num: 37

Candidate Starts for Secretariat_8:

(5, 3709), (7, 3730), (17, 3784), (22, 3811), (Start: 26 @3826 has 1 MA's), (Start: 33 @3853 has 1 MA's), (Start: 34 @3856 has 1 MA's), (Start: 37 @3865 has 79 MA's), (39, 3889), (45, 3928), (55, 4030), (66, 4105), (67, 4114), (75, 4168), (83, 4240),

Gene: SendItCS_2 Start: 524, Stop: 937, Start Num: 35

Candidate Starts for SendItCS_2:

(7, 401), (Start: 24 @491 has 3 MA's), (Start: 35 @524 has 6 MA's), (52, 641), (55, 692), (59, 719), (69, 794),

Gene: Serenabeen_7 Start: 2954, Stop: 3370, Start Num: 36

Candidate Starts for Serenabeen_7:

(1, 2687), (2, 2702), (13, 2861), (18, 2882), (23, 2912), (Start: 36 @2954 has 14 MA's), (47, 3026), (56, 3128), (59, 3149), (61, 3164), (66, 3197), (67, 3206),

Gene: ShaggyRogers_12 Start: 6016, Stop: 6426, Start Num: 37

Candidate Starts for ShaggyRogers_12:

(7, 5881), (9, 5890), (17, 5935), (19, 5947), (22, 5962), (Start: 26 @5977 has 1 MA's), (Start: 33 @6004 has 1 MA's), (Start: 37 @6016 has 79 MA's), (44, 6061), (66, 6256), (67, 6265), (75, 6319),

Gene: SheRa_2 Start: 483, Stop: 890, Start Num: 37

Candidate Starts for SheRa_2:

(20, 420), (Start: 24 @438 has 3 MA's), (Start: 29 @453 has 1 MA's), (Start: 37 @483 has 79 MA's), (43, 516), (48, 558), (52, 594), (66, 720), (67, 729),

Gene: Shepard_2 Start: 969, Stop: 1376, Start Num: 38

Candidate Starts for Shepard_2:

(31, 957), (Start: 35 @960 has 6 MA's), (Start: 36 @963 has 14 MA's), (Start: 38 @969 has 90 MA's), (50, 1053), (52, 1080), (66, 1206), (67, 1215), (77, 1278),

Gene: Shiba_3 Start: 1002, Stop: 1442, Start Num: 38

Candidate Starts for Shiba_3:

(Start: 38 @1002 has 90 MA's), (65, 1236), (66, 1245), (67, 1254), (78, 1362), (83, 1380), (84, 1404),

Gene: Sloopyjoe_3 Start: 1003, Stop: 1443, Start Num: 38

Candidate Starts for Sloopyjoe_3:

(Start: 38 @1003 has 90 MA's), (65, 1237), (66, 1246), (67, 1255), (78, 1363), (83, 1381), (84, 1405),

Gene: Soshi_2 Start: 485, Stop: 892, Start Num: 37

Candidate Starts for Soshi_2:

(Start: 37 @485 has 79 MA's), (42, 515), (49, 563),

Gene: Spain_3 Start: 1002, Stop: 1442, Start Num: 38

Candidate Starts for Spain_3:

(Start: 38 @1002 has 90 MA's), (65, 1236), (66, 1245), (67, 1254), (78, 1362), (83, 1380), (84, 1404),

Gene: Sporto_2 Start: 927, Stop: 1370, Start Num: 26

Candidate Starts for Sporto_2:

(Start: 26 @927 has 1 MA's), (Start: 38 @957 has 90 MA's), (49, 1035), (53, 1107), (58, 1140), (66, 1200), (67, 1209), (79, 1320), (80, 1323), (83, 1335),

Gene: Sprinkle_2 Start: 984, Stop: 1397, Start Num: 38

Candidate Starts for Sprinkle_2:

(Start: 26 @954 has 1 MA's), (Start: 38 @984 has 90 MA's), (66, 1227), (67, 1236), (70, 1263), (79, 1347), (80, 1350), (83, 1362),

Gene: StarLord_3 Start: 1003, Stop: 1443, Start Num: 38

Candidate Starts for StarLord_3:

(Start: 38 @1003 has 90 MA's), (65, 1237), (66, 1246), (67, 1255), (78, 1363), (83, 1381), (84, 1405),

Gene: Stardom_3 Start: 1076, Stop: 1483, Start Num: 38

Candidate Starts for Stardom_3:

(Start: 38 @1076 has 90 MA's), (53, 1226), (66, 1313), (67, 1322), (74, 1367), (77, 1385),

Gene: Stardrop_3 Start: 1108, Stop: 1518, Start Num: 37

Candidate Starts for Stardrop_3:

(12, 1015), (17, 1039), (Start: 24 @1075 has 3 MA's), (Start: 33 @1102 has 1 MA's), (Start: 37 @1108 has 79 MA's), (52, 1222), (62, 1318), (66, 1348), (67, 1357),

Gene: Stayer_3 Start: 1002, Stop: 1442, Start Num: 38

Candidate Starts for Stayer_3:

(Start: 38 @1002 has 90 MA's), (65, 1236), (66, 1245), (67, 1254), (78, 1362), (83, 1380), (84, 1404),

Gene: Sunny4976_4 Start: 1560, Stop: 1994, Start Num: 38

Candidate Starts for Sunny4976_4:

(28, 1536), (Start: 38 @1560 has 90 MA's), (57, 1737), (66, 1797), (67, 1806), (77, 1869), (79, 1917), (83, 1932),

Gene: Sweetclover_8 Start: 2919, Stop: 3335, Start Num: 36

Candidate Starts for Sweetclover_8:

(23, 2877), (Start: 34 @2913 has 1 MA's), (Start: 36 @2919 has 14 MA's), (40, 2949), (56, 3093), (61, 3129), (66, 3162), (67, 3171),

Gene: Synopsis_2 Start: 1107, Stop: 1514, Start Num: 38

Candidate Starts for Synopsis_2:

(Start: 24 @1077 has 3 MA's), (Start: 38 @1107 has 90 MA's), (52, 1218), (66, 1344), (67, 1353), (82, 1476),

Gene: Talon44_9 Start: 3583, Stop: 3990, Start Num: 38

Candidate Starts for Talon44_9:

(Start: 26 @3541 has 1 MA's), (Start: 38 @3583 has 90 MA's), (45, 3643), (59, 3772), (66, 3820), (67, 3829), (75, 3883),

Gene: Tanis_8 Start: 2946, Stop: 3353, Start Num: 38

Candidate Starts for Tanis_8:

(3, 2766), (4, 2778), (17, 2862), (19, 2874), (20, 2880), (22, 2889), (Start: 26 @2904 has 1 MA's), (Start: 38 @2946 has 90 MA's), (45, 3006), (59, 3135), (66, 3183), (67, 3192), (75, 3246),

Gene: Tatanka_2 Start: 1047, Stop: 1454, Start Num: 38

Candidate Starts for Tatanka_2:

(Start: 24 @1017 has 3 MA's), (Start: 38 @1047 has 90 MA's), (52, 1158), (66, 1284), (67, 1293), (82, 1416),

Gene: Teacup_3 Start: 1109, Stop: 1516, Start Num: 38

Candidate Starts for Teacup_3:

(Start: 24 @1079 has 3 MA's), (Start: 38 @1109 has 90 MA's), (52, 1220), (66, 1346), (67, 1355), (82, 1478),

Gene: TenaciousP_12 Start: 6221, Stop: 6631, Start Num: 37

Candidate Starts for TenaciousP_12:

(3, 6044), (9, 6095), (12, 6116), (22, 6167), (Start: 26 @6182 has 1 MA's), (Start: 33 @6209 has 1 MA's), (Start: 36 @6218 has 14 MA's), (Start: 37 @6221 has 79 MA's), (44, 6266), (66, 6461), (67, 6470), (69, 6488), (75, 6524),

Gene: Tenney120_3 Start: 1088, Stop: 1498, Start Num: 37

Candidate Starts for Tenney120_3:

(11, 992), (12, 995), (17, 1019), (Start: 24 @1055 has 3 MA's), (Start: 33 @1082 has 1 MA's), (Start: 37 @1088 has 79 MA's), (52, 1202), (62, 1298), (66, 1328), (67, 1337),

Gene: Tenno_3 Start: 2361, Stop: 2768, Start Num: 38

Candidate Starts for Tenno_3:

(Start: 24 @2331 has 3 MA's), (Start: 38 @2361 has 90 MA's), (52, 2472), (66, 2598), (67, 2607), (82, 2730),

Gene: Thiqqums_2 Start: 524, Stop: 937, Start Num: 35

Candidate Starts for Thiqqums_2:

(7, 401), (Start: 24 @491 has 3 MA's), (Start: 35 @524 has 6 MA's), (52, 641), (55, 692), (59, 719), (69, 794),

Gene: TieDye_2 Start: 485, Stop: 892, Start Num: 37

Candidate Starts for TieDye_2:

(13, 395), (Start: 37 @485 has 79 MA's), (49, 563),

Gene: Tipton_2 Start: 969, Stop: 1376, Start Num: 38

Candidate Starts for Tipton_2:

(Start: 24 @936 has 3 MA's), (31, 957), (Start: 35 @960 has 6 MA's), (Start: 36 @963 has 14 MA's), (Start: 38 @969 has 90 MA's), (50, 1053), (52, 1080), (66, 1206), (67, 1215), (77, 1278),

Gene: Tokki_2 Start: 969, Stop: 1376, Start Num: 38

Candidate Starts for Tokki_2:

(Start: 24 @936 has 3 MA's), (31, 957), (Start: 35 @960 has 6 MA's), (Start: 36 @963 has 14 MA's), (Start: 38 @969 has 90 MA's), (50, 1053), (52, 1080), (66, 1206), (67, 1215), (77, 1278),

Gene: Tonaltzin_13 Start: 6221, Stop: 6631, Start Num: 37

Candidate Starts for Tonaltzin_13:

(3, 6044), (9, 6095), (12, 6116), (22, 6167), (Start: 26 @6182 has 1 MA's), (Start: 33 @6209 has 1 MA's), (Start: 37 @6221 has 79 MA's), (44, 6266), (66, 6461), (67, 6470), (69, 6488), (75, 6524),

Gene: TonyStarch_2 Start: 485, Stop: 892, Start Num: 37

Candidate Starts for TonyStarch_2:

(Start: 37 @485 has 79 MA's), (49, 563),

Gene: Tribby_4 Start: 1076, Stop: 1483, Start Num: 38

Candidate Starts for Tribby_4:

(Start: 38 @1076 has 90 MA's), (53, 1226), (66, 1313), (67, 1322), (74, 1367), (77, 1385),

Gene: TrixiePhattel_3 Start: 1041, Stop: 1451, Start Num: 37

Candidate Starts for TrixiePhattel_3:

(16, 963), (19, 978), (21, 990), (Start: 24 @1002 has 3 MA's), (32, 1032), (Start: 37 @1041 has 79 MA's), (66, 1281), (67, 1290), (78, 1398),

Gene: Truckee_2 Start: 990, Stop: 1403, Start Num: 36

Candidate Starts for Truckee_2:

(Start: 24 @966 has 3 MA's), (31, 987), (Start: 36 @990 has 14 MA's), (Start: 38 @996 has 90 MA's), (52, 1107), (54, 1155), (66, 1233), (67, 1242), (77, 1305),

Gene: Trufflozitus_8 Start: 3380, Stop: 3787, Start Num: 38

Candidate Starts for Trufflozitus_8:

(3, 3203), (4, 3215), (17, 3299), (19, 3311), (20, 3317), (Start: 26 @3341 has 1 MA's), (Start: 33 @3368 has 1 MA's), (Start: 34 @3371 has 1 MA's), (Start: 37 @3377 has 79 MA's), (Start: 38 @3380 has 90 MA's), (59, 3569), (66, 3617), (67, 3626), (75, 3680),

Gene: Trustiboi_2 Start: 1128, Stop: 1535, Start Num: 38

Candidate Starts for Trustiboi_2:

(Start: 24 @1098 has 3 MA's), (Start: 38 @1128 has 90 MA's), (52, 1239), (66, 1365), (67, 1374), (82, 1497),

Gene: Untouchable_11 Start: 4944, Stop: 5354, Start Num: 37

Candidate Starts for Untouchable_11:

(9, 4818), (17, 4863), (19, 4875), (22, 4890), (Start: 26 @4905 has 1 MA's), (Start: 33 @4932 has 1 MA's), (Start: 37 @4944 has 79 MA's), (45, 5007), (66, 5184), (67, 5193), (75, 5247),

Gene: Uzumaki_3 Start: 1088, Stop: 1498, Start Num: 37

Candidate Starts for Uzumaki_3:

(12, 995), (17, 1019), (22, 1046), (Start: 24 @1055 has 3 MA's), (Start: 33 @1082 has 1 MA's), (Start: 37 @1088 has 79 MA's), (52, 1202), (62, 1298), (66, 1328), (67, 1337),

Gene: Vardy_12 Start: 6017, Stop: 6427, Start Num: 37

Candidate Starts for Vardy_12:

(7, 5882), (9, 5891), (17, 5936), (19, 5948), (22, 5963), (Start: 26 @5978 has 1 MA's), (Start: 33 @6005 has 1 MA's), (Start: 34 @6008 has 1 MA's), (Start: 37 @6017 has 79 MA's), (44, 6062), (57, 6197), (66, 6257), (67, 6266), (75, 6320),

Gene: Wigberry_2 Start: 494, Stop: 901, Start Num: 37

Candidate Starts for Wigberry_2:

(Start: 24 @458 has 3 MA's), (Start: 37 @494 has 79 MA's), (52, 605), (75, 794),

Gene: Xenomorph_3 Start: 1076, Stop: 1483, Start Num: 38

Candidate Starts for Xenomorph_3:

(Start: 38 @1076 has 90 MA's), (53, 1226), (66, 1313), (67, 1322), (74, 1367), (77, 1385),

Gene: YoshiYama_3 Start: 1076, Stop: 1483, Start Num: 38

Candidate Starts for YoshiYama_3:

(Start: 38 @1076 has 90 MA's), (53, 1226), (66, 1313), (67, 1322), (74, 1367), (77, 1385),

Gene: Yotsuba_6 Start: 2497, Stop: 2919, Start Num: 37

Candidate Starts for Yotsuba_6:

(Start: 24 @2455 has 3 MA's), (27, 2467), (Start: 35 @2491 has 6 MA's), (Start: 37 @2497 has 79 MA's), (56, 2668), (59, 2689), (60, 2695), (66, 2737), (67, 2746), (73, 2785), (77, 2809),

Gene: Zeina_3 Start: 1098, Stop: 1508, Start Num: 37

Candidate Starts for Zeina_3:

(17, 1029), (22, 1056), (Start: 24 @1065 has 3 MA's), (Start: 33 @1092 has 1 MA's), (Start: 37 @1098 has 79 MA's), (52, 1212), (62, 1308), (66, 1338), (67, 1347),

Gene: Zeph_11 Start: 5203, Stop: 5613, Start Num: 37

Candidate Starts for Zeph_11:

(17, 5122), (19, 5134), (22, 5149), (Start: 26 @5164 has 1 MA's), (Start: 33 @5191 has 1 MA's), (Start: 37 @5203 has 79 MA's), (44, 5248), (57, 5383), (66, 5443), (67, 5452), (75, 5506),

Gene: Zippen_3 Start: 1228, Stop: 1635, Start Num: 38

Candidate Starts for Zippen_3:

(Start: 24 @1198 has 3 MA's), (Start: 38 @1228 has 90 MA's), (52, 1339), (66, 1465), (67, 1474), (69, 1492),