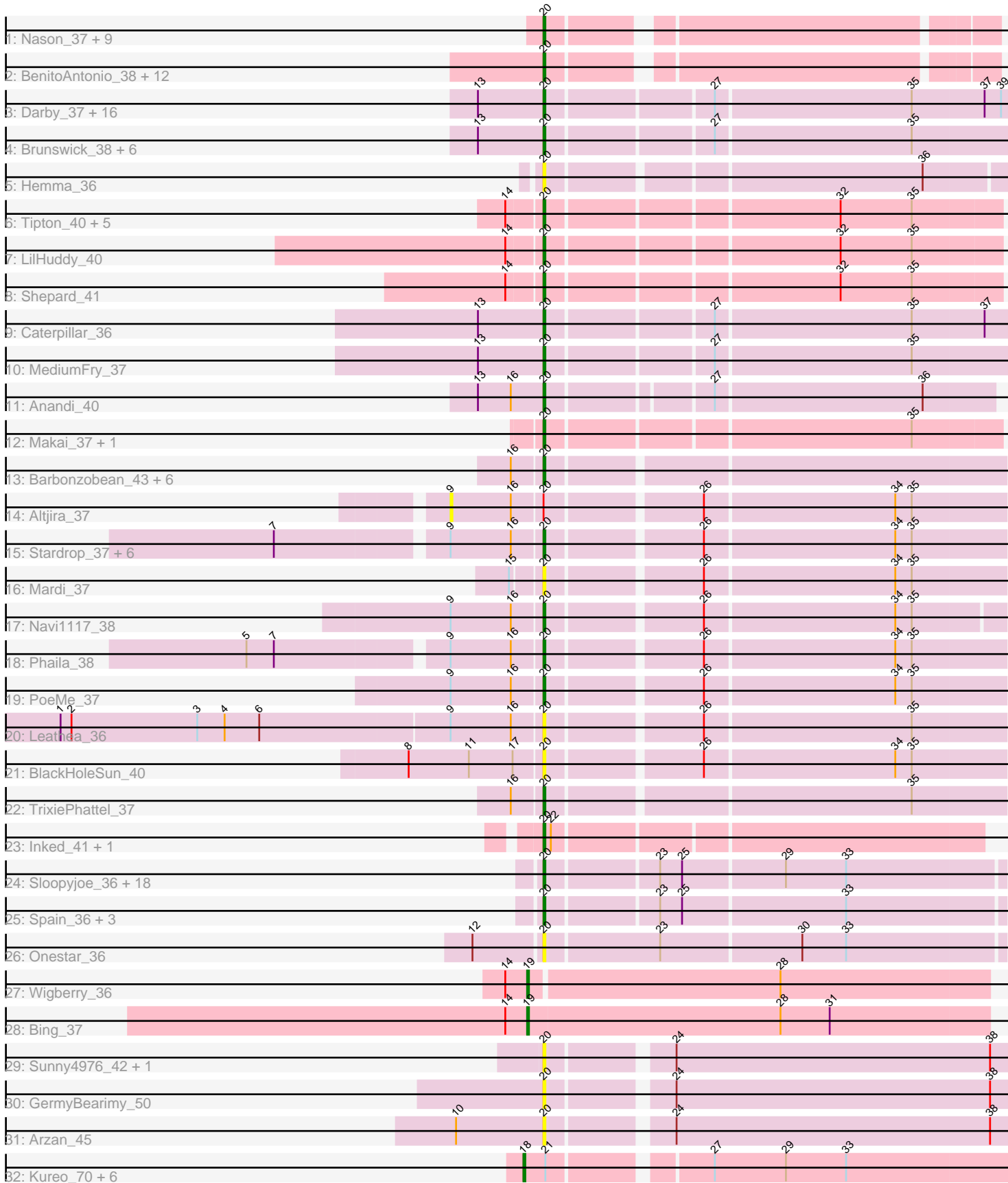


Pham 299893



Note: Tracks are now grouped by subcluster and scaled. Switching in subcluster is indicated by changes in track color. Track scale is now set by default to display the region 30 bp upstream of start 1 to 30 bp downstream of the last possible start. If this default region is judged to be packed too tightly with annotated starts, the track will be further scaled to only show that region of the ORF with annotated starts. This action will be indicated by adding "Zoomed" to the title. For starts, yellow indicates the location of called starts comprised solely of Glimmer/GeneMark auto-annotations, green indicates the location of called starts with at least 1 manual gene annotation.

## Pham 299893 Report

This analysis was run 06/08/26 on database version 649.

Pham number 299893 has 122 members, 29 are drafts.

Phages represented in each track:

- Track 1 : Nason\_37, Mudcat\_36, Xenomorph\_34, JEGGS\_37, Arcadia\_37, Tribby\_37, Correa\_35, Cheesy\_37, Heisenberger\_37, Elsa\_37
- Track 2 : BenitoAntonio\_38, Circum\_39, GoCrazy\_36, Stardom\_35, Benllo\_37, Hankly\_37, KeaneyLin\_36, Bowling\_38, Dynamite\_38, YoshiYama\_37, Kardesai\_39, Mooshroom\_40, NapoleonB\_38
- Track 3 : Darby\_37, Dinallo\_39, Nivinsha\_39, AreFloNak\_38, Breylor17\_39, Westerlin\_39, Synopsis\_37, CapnMurica\_37, MiniBagel\_37, Trustiboi\_39, Issa\_38, Gordon\_37, DevitoJr\_38, ScienceWizSam\_40, Nightmare\_39, CastorTray\_40, Tenno\_38
- Track 4 : Brunswick\_38, LucySwiss\_37, Niktson\_37, Teacup\_39, Acai\_39, ElephantMan\_37, Tatanka\_37
- Track 5 : Hemma\_36
- Track 6 : Tipton\_40, Chlochlo\_40, Tokki\_39, Giantsbane\_40, Phaby\_40, Bouchard\_39
- Track 7 : LilHuddy\_40
- Track 8 : Shepard\_41
- Track 9 : Caterpillar\_36
- Track 10 : MediumFry\_37
- Track 11 : Anandi\_40
- Track 12 : Makai\_37, Truckee\_36
- Track 13 : Barbonzobean\_43, Muglass\_39, BarbieDoll\_41, Renaldo\_42, Lewando\_40, Kinny\_40, Biscute\_37
- Track 14 : Altjira\_37
- Track 15 : Stardrop\_37, Argan\_36, KevinMinion\_38, Zeina\_38, GantcherGoblin\_36, Tenney120\_38, Uzumaki\_36
- Track 16 : Mardi\_37
- Track 17 : Navi1117\_38
- Track 18 : Phaila\_38
- Track 19 : PoeMe\_37
- Track 20 : Leathea\_36
- Track 21 : BlackHoleSun\_40
- Track 22 : TrixiePhattel\_37
- Track 23 : Inked\_41, Zippen\_40
- Track 24 : Sloopyjoe\_36, ProfFrink\_36, Sporto\_38, StarLord\_36, Shiba\_36, Natasha\_37, RustyBoy\_37, Salk\_36, Egad\_36, Stayer\_36, Boog\_36, BronxBay\_36, Sprinkle\_35, DoctorPepper\_36, Raunak\_37, Michelle\_36, HerbBucket\_35, Jeremy4pt0\_36, Linda\_36

- Track 25 : Spain\_36, Powellldog\_38, MrAaronian\_36, Djungelskog\_36
- Track 26 : Onestar\_36
- Track 27 : Wigberry\_36
- Track 28 : Bing\_37
- Track 29 : Sunny4976\_42, Jazzy4900\_43
- Track 30 : GermyBearimy\_50
- Track 31 : Arzan\_45
- Track 32 : Kureo\_70, Marianna39\_70, Elver\_68, Gandionco\_68, Qui\_70, JeNeSaisPas\_67, Paella\_70

**Summary of Final Annotations (See graph section above for start numbers):**

The start number called the most often in the published annotations is 20, it was called in 88 of the 93 non-draft genes in the pham.

Genes that call this "Most Annotated" start:

- Acai\_39, Anandi\_40, Arcadia\_37, AreFloNak\_38, Argan\_36, Arzan\_45, BarbieDoll\_41, Barbonzobean\_43, BenitoAntonio\_38, Benllo\_37, Biscute\_37, BlackHoleSun\_40, Boog\_36, Bouchard\_39, Bowling\_38, Breylor17\_39, BronxBay\_36, Brunswick\_38, CapnMurica\_37, CastorTray\_40, Caterpillar\_36, Cheesy\_37, Chlochlo\_40, Circum\_39, Correa\_35, Darby\_37, DevitoJr\_38, Dinallo\_39, Djungelskog\_36, DoctorPepper\_36, Dynamite\_38, Egad\_36, ElephantMan\_37, Elsa\_37, GantcherGoblin\_36, GermyBearimy\_50, Giantsbane\_40, GoCrazy\_36, Gordon\_37, Hankly\_37, Heisenberger\_37, Hemma\_36, HerbBucket\_35, Inked\_41, Issa\_38, JEGGS\_37, Jazzy4900\_43, Jeremy4pt0\_36, Kardesai\_39, KeaneyLin\_36, KevinMinion\_38, Kinny\_40, Leathea\_36, Lewando\_40, LilHuddy\_40, Linda\_36, LucySwiss\_37, Makai\_37, Mardi\_37, MediumFry\_37, Michelle\_36, MiniBagel\_37, Mooshroom\_40, MrAaronian\_36, Mudcat\_36, Muglass\_39, NapoleonB\_38, Nason\_37, Natasha\_37, Navi1117\_38, Nightmare\_39, Niktson\_37, Nivinsha\_39, Onestar\_36, Phaby\_40, Phaila\_38, PoeMe\_37, Powellldog\_38, ProfFrink\_36, Raunak\_37, Renaldo\_42, RustyBoy\_37, Salk\_36, ScienceWizSam\_40, Shepard\_41, Shiba\_36, Sloopyjoe\_36, Spain\_36, Sporto\_38, Sprinkle\_35, StarLord\_36, Stardom\_35, Stardrop\_37, Stayer\_36, Sunny4976\_42, Synopsis\_37, Tatanka\_37, Teacup\_39, Tenney120\_38, Tenno\_38, Tipton\_40, Tokki\_39, Tribby\_37, TrixiePhattel\_37, Truckee\_36, Trustiboi\_39, Uzumaki\_36, Westerlin\_39, Xenomorph\_34, YoshiYama\_37, Zeina\_38, Zippen\_40,

Genes that have the "Most Annotated" start but do not call it:

- Altjira\_37,

Genes that do not have the "Most Annotated" start:

- Bing\_37, Elver\_68, Gandionco\_68, JeNeSaisPas\_67, Kureo\_70, Marianna39\_70, Paella\_70, Qui\_70, Wigberry\_36,

**Summary by start number:**

Start 9:

- Found in 12 of 122 ( 9.8% ) of genes in pham
- No Manual Annotations of this start.
- Called 8.3% of time when present

- Phage (with cluster) where this start called: Altjira\_37 (AU6),

#### Start 18:

- Found in 7 of 122 ( 5.7% ) of genes in pham
- Manual Annotations of this start: 3 of 93
- Called 100.0% of time when present
- Phage (with cluster) where this start called: Elver\_68 (FK), Gandionco\_68 (FK), JeNeSaisPas\_67 (FK), Kureo\_70 (FK), Marianna39\_70 (FK), Paella\_70 (FK), Qui\_70 (FK),

#### Start 19:

- Found in 2 of 122 ( 1.6% ) of genes in pham
- Manual Annotations of this start: 2 of 93
- Called 100.0% of time when present
- Phage (with cluster) where this start called: Bing\_37 (BI5), Wigberry\_36 (BI5),

#### Start 20:

- Found in 113 of 122 ( 92.6% ) of genes in pham
- Manual Annotations of this start: 88 of 93
- Called 99.1% of time when present
- Phage (with cluster) where this start called: Acai\_39 (AU1), Anandi\_40 (AU4), Arcadia\_37 (AM), AreFloNak\_38 (AU1), Argan\_36 (AU6), Arzan\_45 (FI), BarbieDoll\_41 (AU6), Barbonzobean\_43 (AU6), BenitoAntonio\_38 (AM), Benllo\_37 (AM), Biscute\_37 (AU6), BlackHoleSun\_40 (AU6), Boog\_36 (AW), Bouchard\_39 (AU2), Bowling\_38 (AM), Breylor17\_39 (AU1), BronxBay\_36 (AW), Brunswick\_38 (AU1), CapnMurica\_37 (AU1), CastorTray\_40 (AU1), Caterpillar\_36 (AU4), Cheesy\_37 (AM), Chlochlo\_40 (AU2), Circum\_39 (AM), Correa\_35 (AM), Darby\_37 (AU1), DevitoJr\_38 (AU1), Dinallo\_39 (AU1), Djungelskog\_36 (AW), DoctorPepper\_36 (AW), Dynamite\_38 (AM), Egad\_36 (AW), ElephantMan\_37 (AU1), Elsa\_37 (AM), GantcherGoblin\_36 (AU6), GermyBearimy\_50 (FI), Giantsbane\_40 (AU2), GoCrazy\_36 (AM), Gordon\_37 (AU1), Hankly\_37 (AM), Heisenberger\_37 (AM), Hemma\_36 (AU1), HerbBucket\_35 (AW), Inked\_41 (AU7), Issa\_38 (AU1), JEGGS\_37 (AM), Jazzy4900\_43 (FI), Jeremy4pt0\_36 (AW), Kardesai\_39 (AM), KeaneyLin\_36 (AM), KevinMinion\_38 (AU6), Kinny\_40 (AU6), Leathea\_36 (AU6), Lewando\_40 (AU6), LilHuddy\_40 (AU2), Linda\_36 (AW), LucySwiss\_37 (AU1), Makai\_37 (AU5), Mardi\_37 (AU6), MediumFry\_37 (AU4), Michelle\_36 (AW), MiniBagel\_37 (AU1), Mooshroom\_40 (AM), MrAaronian\_36 (AW), Mudcat\_36 (AM), Muglass\_39 (AU6), NapoleonB\_38 (AM), Nason\_37 (AM), Natasha\_37 (AW), Navi1117\_38 (AU6), Nightmare\_39 (AU1), Niktson\_37 (AU1), Nivinsha\_39 (AU1), Onestar\_36 (AW), Phaby\_40 (AU2), Phaila\_38 (AU6), PoeMe\_37 (AU6), PowellDog\_38 (AW), ProfFrink\_36 (AW), Raunak\_37 (AW), Renaldo\_42 (AU6), RustyBoy\_37 (AW), Salk\_36 (AW), ScienceWizSam\_40 (AU1), Shepard\_41 (AU2), Shiba\_36 (AW), Sloopyjoe\_36 (AW), Spain\_36 (AW), Sporto\_38 (AW), Sprinkle\_35 (AW), StarLord\_36 (AW), Stardom\_35 (AM), Stardrop\_37 (AU6), Stayer\_36 (AW), Sunny4976\_42 (FI), Synopsis\_37 (AU1), Tatanka\_37 (AU1), Teacup\_39 (AU1), Tenney120\_38 (AU6), Tenno\_38 (AU1), Tipton\_40 (AU2), Tokki\_39 (AU2), Tribby\_37 (AM), TrixiePhattel\_37 (AU6), Truckee\_36 (AU5), Trustiboi\_39 (AU1), Uzumaki\_36 (AU6), Westerlin\_39 (AU1), Xenomorph\_34 (AM), YoshiYama\_37 (AM), Zeina\_38 (AU6), Zippen\_40 (AU7),

#### Summary by clusters:

There are 11 clusters represented in this pham: BI5, AU7, AM, AU1, AU2, AU5, AU4, AW, AU6, FI, FK,

Info for manual annotations of cluster AM:

- Start number 20 was manually annotated 21 times for cluster AM.

Info for manual annotations of cluster AU1:

- Start number 20 was manually annotated 19 times for cluster AU1.

Info for manual annotations of cluster AU2:

- Start number 20 was manually annotated 8 times for cluster AU2.

Info for manual annotations of cluster AU4:

- Start number 20 was manually annotated 3 times for cluster AU4.

Info for manual annotations of cluster AU5:

- Start number 20 was manually annotated 2 times for cluster AU5.

Info for manual annotations of cluster AU6:

- Start number 20 was manually annotated 14 times for cluster AU6.

Info for manual annotations of cluster AU7:

- Start number 20 was manually annotated 2 times for cluster AU7.

Info for manual annotations of cluster AW:

- Start number 20 was manually annotated 19 times for cluster AW.

Info for manual annotations of cluster BI5:

- Start number 19 was manually annotated 2 times for cluster BI5.

Info for manual annotations of cluster FK:

- Start number 18 was manually annotated 3 times for cluster FK.

### ***Gene Information:***

Gene: Acai\_39 Start: 30421, Stop: 30663, Start Num: 20

Candidate Starts for Acai\_39:

(13, 30385), (Start: 20 @30421 has 88 MA's), (27, 30505), (35, 30610),

Gene: Altjira\_37 Start: 29464, Stop: 29751, Start Num: 9

Candidate Starts for Altjira\_37:

(9, 29464), (16, 29497), (Start: 20 @29512 has 88 MA's), (26, 29590), (34, 29692), (35, 29701),

Gene: Anandi\_40 Start: 30969, Stop: 31199, Start Num: 20

Candidate Starts for Anandi\_40:

(13, 30933), (16, 30951), (Start: 20 @30969 has 88 MA's), (27, 31050), (36, 31161),

Gene: Arcadia\_37 Start: 27918, Stop: 28139, Start Num: 20

Candidate Starts for Arcadia\_37:

(Start: 20 @27918 has 88 MA's),

Gene: AreFloNak\_38 Start: 30359, Stop: 30601, Start Num: 20

Candidate Starts for AreFloNak\_38:

(13, 30323), (Start: 20 @30359 has 88 MA's), (27, 30443), (35, 30548), (37, 30587), (39, 30596),

Gene: Argan\_36 Start: 28652, Stop: 28891, Start Num: 20

Candidate Starts for Argan\_36:

(7, 28517), (9, 28604), (16, 28637), (Start: 20 @28652 has 88 MA's), (26, 28730), (34, 28832), (35, 28841),

Gene: Arzan\_45 Start: 30391, Stop: 30633, Start Num: 20

Candidate Starts for Arzan\_45:

(10, 30343), (Start: 20 @30391 has 88 MA's), (24, 30451), (38, 30622),

Gene: BarbieDoll\_41 Start: 30355, Stop: 30594, Start Num: 20

Candidate Starts for BarbieDoll\_41:

(16, 30340), (Start: 20 @30355 has 88 MA's),

Gene: Barbonzobean\_43 Start: 30531, Stop: 30770, Start Num: 20

Candidate Starts for Barbonzobean\_43:

(16, 30516), (Start: 20 @30531 has 88 MA's),

Gene: BenitoAntonio\_38 Start: 27761, Stop: 27982, Start Num: 20

Candidate Starts for BenitoAntonio\_38:

(Start: 20 @27761 has 88 MA's),

Gene: Benllo\_37 Start: 28439, Stop: 28660, Start Num: 20

Candidate Starts for Benllo\_37:

(Start: 20 @28439 has 88 MA's),

Gene: Bing\_37 Start: 27756, Stop: 28007, Start Num: 19

Candidate Starts for Bing\_37:

(14, 27744), (Start: 19 @27756 has 2 MA's), (28, 27894), (31, 27921),

Gene: Biscute\_37 Start: 30008, Stop: 30247, Start Num: 20

Candidate Starts for Biscute\_37:

(16, 29993), (Start: 20 @30008 has 88 MA's),

Gene: BlackHoleSun\_40 Start: 29006, Stop: 29245, Start Num: 20

Candidate Starts for BlackHoleSun\_40:

(8, 28934), (11, 28967), (17, 28991), (Start: 20 @29006 has 88 MA's), (26, 29084), (34, 29186), (35, 29195),

Gene: Boog\_36 Start: 27777, Stop: 28016, Start Num: 20

Candidate Starts for Boog\_36:

(Start: 20 @27777 has 88 MA's), (23, 27834), (25, 27846), (29, 27900), (33, 27933),

Gene: Bouchard\_39 Start: 30556, Stop: 30792, Start Num: 20

Candidate Starts for Bouchard\_39:

(14, 30538), (Start: 20 @30556 has 88 MA's), (32, 30706), (35, 30745),

Gene: Bowling\_38 Start: 27906, Stop: 28127, Start Num: 20

Candidate Starts for Bowling\_38:

(Start: 20 @27906 has 88 MA's),

Gene: Breylor17\_39 Start: 30968, Stop: 31210, Start Num: 20

Candidate Starts for Breylor17\_39:

(13, 30932), (Start: 20 @30968 has 88 MA's), (27, 31052), (35, 31157), (37, 31196), (39, 31205),

Gene: BronxBay\_36 Start: 27776, Stop: 28015, Start Num: 20

Candidate Starts for BronxBay\_36:

(Start: 20 @27776 has 88 MA's), (23, 27833), (25, 27845), (29, 27899), (33, 27932),

Gene: Brunswick\_38 Start: 30104, Stop: 30346, Start Num: 20

Candidate Starts for Brunswick\_38:

(13, 30068), (Start: 20 @30104 has 88 MA's), (27, 30188), (35, 30293),

Gene: CapnMurica\_37 Start: 31196, Stop: 31438, Start Num: 20

Candidate Starts for CapnMurica\_37:

(13, 31160), (Start: 20 @31196 has 88 MA's), (27, 31280), (35, 31385), (37, 31424), (39, 31433),

Gene: CastorTray\_40 Start: 30823, Stop: 31065, Start Num: 20

Candidate Starts for CastorTray\_40:

(13, 30787), (Start: 20 @30823 has 88 MA's), (27, 30907), (35, 31012), (37, 31051), (39, 31060),

Gene: Caterpillar\_36 Start: 29603, Stop: 29845, Start Num: 20

Candidate Starts for Caterpillar\_36:

(13, 29567), (Start: 20 @29603 has 88 MA's), (27, 29687), (35, 29792), (37, 29831),

Gene: Cheesy\_37 Start: 27610, Stop: 27831, Start Num: 20

Candidate Starts for Cheesy\_37:

(Start: 20 @27610 has 88 MA's),

Gene: Chlochlo\_40 Start: 30591, Stop: 30827, Start Num: 20

Candidate Starts for Chlochlo\_40:

(14, 30573), (Start: 20 @30591 has 88 MA's), (32, 30741), (35, 30780),

Gene: Circum\_39 Start: 28270, Stop: 28491, Start Num: 20

Candidate Starts for Circum\_39:

(Start: 20 @28270 has 88 MA's),

Gene: Correa\_35 Start: 26801, Stop: 27022, Start Num: 20

Candidate Starts for Correa\_35:

(Start: 20 @26801 has 88 MA's),

Gene: Darby\_37 Start: 29946, Stop: 30188, Start Num: 20

Candidate Starts for Darby\_37:

(13, 29910), (Start: 20 @29946 has 88 MA's), (27, 30030), (35, 30135), (37, 30174), (39, 30183),

Gene: DevitoJr\_38 Start: 30442, Stop: 30684, Start Num: 20

Candidate Starts for DevitoJr\_38:

(13, 30406), (Start: 20 @30442 has 88 MA's), (27, 30526), (35, 30631), (37, 30670), (39, 30679),

Gene: Dinallo\_39 Start: 31506, Stop: 31748, Start Num: 20

Candidate Starts for Dinallo\_39:

(13, 31470), (Start: 20 @31506 has 88 MA's), (27, 31590), (35, 31695), (37, 31734), (39, 31743),

Gene: Djungelskog\_36 Start: 27776, Stop: 28015, Start Num: 20  
Candidate Starts for Djungelskog\_36:  
(Start: 20 @27776 has 88 MA's), (23, 27833), (25, 27845), (33, 27932),

Gene: DoctorPepper\_36 Start: 27776, Stop: 28015, Start Num: 20  
Candidate Starts for DoctorPepper\_36:  
(Start: 20 @27776 has 88 MA's), (23, 27833), (25, 27845), (29, 27899), (33, 27932),

Gene: Dynamite\_38 Start: 28101, Stop: 28322, Start Num: 20  
Candidate Starts for Dynamite\_38:  
(Start: 20 @28101 has 88 MA's),

Gene: Egad\_36 Start: 27777, Stop: 28016, Start Num: 20  
Candidate Starts for Egad\_36:  
(Start: 20 @27777 has 88 MA's), (23, 27834), (25, 27846), (29, 27900), (33, 27933),

Gene: ElephantMan\_37 Start: 30644, Stop: 30886, Start Num: 20  
Candidate Starts for ElephantMan\_37:  
(13, 30608), (Start: 20 @30644 has 88 MA's), (27, 30728), (35, 30833),

Gene: Elsa\_37 Start: 27918, Stop: 28139, Start Num: 20  
Candidate Starts for Elsa\_37:  
(Start: 20 @27918 has 88 MA's),

Gene: Elver\_68 Start: 44169, Stop: 44420, Start Num: 18  
Candidate Starts for Elver\_68:  
(Start: 18 @44169 has 3 MA's), (21, 44181), (27, 44259), (29, 44298), (33, 44331),

Gene: Gandionco\_68 Start: 44478, Stop: 44729, Start Num: 18  
Candidate Starts for Gandionco\_68:  
(Start: 18 @44478 has 3 MA's), (21, 44490), (27, 44568), (29, 44607), (33, 44640),

Gene: GantcherGoblin\_36 Start: 28690, Stop: 28929, Start Num: 20  
Candidate Starts for GantcherGoblin\_36:  
(7, 28555), (9, 28642), (16, 28675), (Start: 20 @28690 has 88 MA's), (26, 28768), (34, 28870), (35, 28879),

Gene: GermyBearimy\_50 Start: 31468, Stop: 31710, Start Num: 20  
Candidate Starts for GermyBearimy\_50:  
(Start: 20 @31468 has 88 MA's), (24, 31528), (38, 31699),

Gene: Giantsbane\_40 Start: 29463, Stop: 29699, Start Num: 20  
Candidate Starts for Giantsbane\_40:  
(14, 29445), (Start: 20 @29463 has 88 MA's), (32, 29613), (35, 29652),

Gene: GoCrazy\_36 Start: 27748, Stop: 27969, Start Num: 20  
Candidate Starts for GoCrazy\_36:  
(Start: 20 @27748 has 88 MA's),

Gene: Gordon\_37 Start: 31225, Stop: 31467, Start Num: 20  
Candidate Starts for Gordon\_37:  
(13, 31189), (Start: 20 @31225 has 88 MA's), (27, 31309), (35, 31414), (37, 31453), (39, 31462),

Gene: Hankly\_37 Start: 27293, Stop: 27514, Start Num: 20

Candidate Starts for Hankly\_37:

(Start: 20 @27293 has 88 MA's),

Gene: Heisenberger\_37 Start: 27603, Stop: 27824, Start Num: 20

Candidate Starts for Heisenberger\_37:

(Start: 20 @27603 has 88 MA's),

Gene: Hemma\_36 Start: 27247, Stop: 27483, Start Num: 20

Candidate Starts for Hemma\_36:

(Start: 20 @27247 has 88 MA's), (36, 27439),

Gene: HerbBucket\_35 Start: 27777, Stop: 28016, Start Num: 20

Candidate Starts for HerbBucket\_35:

(Start: 20 @27777 has 88 MA's), (23, 27834), (25, 27846), (29, 27900), (33, 27933),

Gene: Inked\_41 Start: 31501, Stop: 31728, Start Num: 20

Candidate Starts for Inked\_41:

(Start: 20 @31501 has 88 MA's), (22, 31504),

Gene: Issa\_38 Start: 30251, Stop: 30493, Start Num: 20

Candidate Starts for Issa\_38:

(13, 30215), (Start: 20 @30251 has 88 MA's), (27, 30335), (35, 30440), (37, 30479), (39, 30488),

Gene: JEGGS\_37 Start: 27657, Stop: 27878, Start Num: 20

Candidate Starts for JEGGS\_37:

(Start: 20 @27657 has 88 MA's),

Gene: Jazzy4900\_43 Start: 30976, Stop: 31218, Start Num: 20

Candidate Starts for Jazzy4900\_43:

(Start: 20 @30976 has 88 MA's), (24, 31036), (38, 31207),

Gene: JeNeSaisPas\_67 Start: 44704, Stop: 44955, Start Num: 18

Candidate Starts for JeNeSaisPas\_67:

(Start: 18 @44704 has 3 MA's), (21, 44716), (27, 44794), (29, 44833), (33, 44866),

Gene: Jeremy4pt0\_36 Start: 27771, Stop: 28010, Start Num: 20

Candidate Starts for Jeremy4pt0\_36:

(Start: 20 @27771 has 88 MA's), (23, 27828), (25, 27840), (29, 27894), (33, 27927),

Gene: Kardesai\_39 Start: 28323, Stop: 28544, Start Num: 20

Candidate Starts for Kardesai\_39:

(Start: 20 @28323 has 88 MA's),

Gene: KeaneyLin\_36 Start: 27748, Stop: 27969, Start Num: 20

Candidate Starts for KeaneyLin\_36:

(Start: 20 @27748 has 88 MA's),

Gene: KevinMinion\_38 Start: 29964, Stop: 30203, Start Num: 20

Candidate Starts for KevinMinion\_38:

(7, 29829), (9, 29916), (16, 29949), (Start: 20 @29964 has 88 MA's), (26, 30042), (34, 30144), (35, 30153),

Gene: Kinny\_40 Start: 30849, Stop: 31088, Start Num: 20

Candidate Starts for Kinny\_40:

(16, 30834), (Start: 20 @30849 has 88 MA's),

Gene: Kureo\_70 Start: 43890, Stop: 44141, Start Num: 18

Candidate Starts for Kureo\_70:

(Start: 18 @43890 has 3 MA's), (21, 43902), (27, 43980), (29, 44019), (33, 44052),

Gene: Leathea\_36 Start: 28113, Stop: 28352, Start Num: 20

Candidate Starts for Leathea\_36:

(1, 27855), (2, 27861), (3, 27930), (4, 27945), (6, 27963), (9, 28065), (16, 28098), (Start: 20 @28113 has 88 MA's), (26, 28191), (35, 28302),

Gene: Lewando\_40 Start: 30552, Stop: 30791, Start Num: 20

Candidate Starts for Lewando\_40:

(16, 30537), (Start: 20 @30552 has 88 MA's),

Gene: LilHuddy\_40 Start: 30610, Stop: 30846, Start Num: 20

Candidate Starts for LilHuddy\_40:

(14, 30592), (Start: 20 @30610 has 88 MA's), (32, 30760), (35, 30799),

Gene: Linda\_36 Start: 27772, Stop: 28011, Start Num: 20

Candidate Starts for Linda\_36:

(Start: 20 @27772 has 88 MA's), (23, 27829), (25, 27841), (29, 27895), (33, 27928),

Gene: LucySwiss\_37 Start: 29946, Stop: 30188, Start Num: 20

Candidate Starts for LucySwiss\_37:

(13, 29910), (Start: 20 @29946 has 88 MA's), (27, 30030), (35, 30135),

Gene: Makai\_37 Start: 30096, Stop: 30332, Start Num: 20

Candidate Starts for Makai\_37:

(Start: 20 @30096 has 88 MA's), (35, 30285),

Gene: Mardi\_37 Start: 28933, Stop: 29172, Start Num: 20

Candidate Starts for Mardi\_37:

(15, 28918), (Start: 20 @28933 has 88 MA's), (26, 29011), (34, 29113), (35, 29122),

Gene: Marianna39\_70 Start: 45053, Stop: 45304, Start Num: 18

Candidate Starts for Marianna39\_70:

(Start: 18 @45053 has 3 MA's), (21, 45065), (27, 45143), (29, 45182), (33, 45215),

Gene: MediumFry\_37 Start: 29916, Stop: 30158, Start Num: 20

Candidate Starts for MediumFry\_37:

(13, 29880), (Start: 20 @29916 has 88 MA's), (27, 30000), (35, 30105),

Gene: Michelle\_36 Start: 27776, Stop: 28015, Start Num: 20

Candidate Starts for Michelle\_36:

(Start: 20 @27776 has 88 MA's), (23, 27833), (25, 27845), (29, 27899), (33, 27932),

Gene: MiniBagel\_37 Start: 31178, Stop: 31420, Start Num: 20

Candidate Starts for MiniBagel\_37:

(13, 31142), (Start: 20 @31178 has 88 MA's), (27, 31262), (35, 31367), (37, 31406), (39, 31415),

Gene: Mooshroom\_40 Start: 28323, Stop: 28544, Start Num: 20  
Candidate Starts for Mooshroom\_40:  
(Start: 20 @28323 has 88 MA's),

Gene: MrAaronian\_36 Start: 27776, Stop: 28015, Start Num: 20  
Candidate Starts for MrAaronian\_36:  
(Start: 20 @27776 has 88 MA's), (23, 27833), (25, 27845), (33, 27932),

Gene: Mudcat\_36 Start: 29309, Stop: 29530, Start Num: 20  
Candidate Starts for Mudcat\_36:  
(Start: 20 @29309 has 88 MA's),

Gene: Muglass\_39 Start: 29912, Stop: 30151, Start Num: 20  
Candidate Starts for Muglass\_39:  
(16, 29897), (Start: 20 @29912 has 88 MA's),

Gene: NapoleonB\_38 Start: 28101, Stop: 28322, Start Num: 20  
Candidate Starts for NapoleonB\_38:  
(Start: 20 @28101 has 88 MA's),

Gene: Nason\_37 Start: 27918, Stop: 28139, Start Num: 20  
Candidate Starts for Nason\_37:  
(Start: 20 @27918 has 88 MA's),

Gene: Natasha\_37 Start: 27544, Stop: 27783, Start Num: 20  
Candidate Starts for Natasha\_37:  
(Start: 20 @27544 has 88 MA's), (23, 27601), (25, 27613), (29, 27667), (33, 27700),

Gene: Navi1117\_38 Start: 29262, Stop: 29498, Start Num: 20  
Candidate Starts for Navi1117\_38:  
(9, 29214), (16, 29247), (Start: 20 @29262 has 88 MA's), (26, 29340), (34, 29442), (35, 29451),

Gene: Nightmare\_39 Start: 30810, Stop: 31052, Start Num: 20  
Candidate Starts for Nightmare\_39:  
(13, 30774), (Start: 20 @30810 has 88 MA's), (27, 30894), (35, 30999), (37, 31038), (39, 31047),

Gene: Niktson\_37 Start: 30644, Stop: 30886, Start Num: 20  
Candidate Starts for Niktson\_37:  
(13, 30608), (Start: 20 @30644 has 88 MA's), (27, 30728), (35, 30833),

Gene: Nivinsha\_39 Start: 30359, Stop: 30601, Start Num: 20  
Candidate Starts for Nivinsha\_39:  
(13, 30323), (Start: 20 @30359 has 88 MA's), (27, 30443), (35, 30548), (37, 30587), (39, 30596),

Gene: Onestar\_36 Start: 27533, Stop: 27775, Start Num: 20  
Candidate Starts for Onestar\_36:  
(12, 27497), (Start: 20 @27533 has 88 MA's), (23, 27593), (30, 27668), (33, 27692),

Gene: Paella\_70 Start: 44762, Stop: 45013, Start Num: 18  
Candidate Starts for Paella\_70:  
(Start: 18 @44762 has 3 MA's), (21, 44774), (27, 44852), (29, 44891), (33, 44924),

Gene: Phaby\_40 Start: 30565, Stop: 30801, Start Num: 20  
Candidate Starts for Phaby\_40:  
(14, 30547), (Start: 20 @30565 has 88 MA's), (32, 30715), (35, 30754),

Gene: Phaila\_38 Start: 28726, Stop: 28965, Start Num: 20  
Candidate Starts for Phaila\_38:  
(5, 28576), (7, 28591), (9, 28678), (16, 28711), (Start: 20 @28726 has 88 MA's), (26, 28804), (34, 28906), (35, 28915),

Gene: PoeMe\_37 Start: 29130, Stop: 29369, Start Num: 20  
Candidate Starts for PoeMe\_37:  
(9, 29082), (16, 29115), (Start: 20 @29130 has 88 MA's), (26, 29208), (34, 29310), (35, 29319),

Gene: Powelldog\_38 Start: 27783, Stop: 28022, Start Num: 20  
Candidate Starts for Powelldog\_38:  
(Start: 20 @27783 has 88 MA's), (23, 27840), (25, 27852), (33, 27939),

Gene: ProfFrink\_36 Start: 27776, Stop: 28015, Start Num: 20  
Candidate Starts for ProfFrink\_36:  
(Start: 20 @27776 has 88 MA's), (23, 27833), (25, 27845), (29, 27899), (33, 27932),

Gene: Qui\_70 Start: 44762, Stop: 45013, Start Num: 18  
Candidate Starts for Qui\_70:  
(Start: 18 @44762 has 3 MA's), (21, 44774), (27, 44852), (29, 44891), (33, 44924),

Gene: Raunak\_37 Start: 27771, Stop: 28010, Start Num: 20  
Candidate Starts for Raunak\_37:  
(Start: 20 @27771 has 88 MA's), (23, 27828), (25, 27840), (29, 27894), (33, 27927),

Gene: Renaldo\_42 Start: 30569, Stop: 30808, Start Num: 20  
Candidate Starts for Renaldo\_42:  
(16, 30554), (Start: 20 @30569 has 88 MA's),

Gene: RustyBoy\_37 Start: 27525, Stop: 27764, Start Num: 20  
Candidate Starts for RustyBoy\_37:  
(Start: 20 @27525 has 88 MA's), (23, 27582), (25, 27594), (29, 27648), (33, 27681),

Gene: Salk\_36 Start: 27772, Stop: 28011, Start Num: 20  
Candidate Starts for Salk\_36:  
(Start: 20 @27772 has 88 MA's), (23, 27829), (25, 27841), (29, 27895), (33, 27928),

Gene: ScienceWizSam\_40 Start: 30761, Stop: 31003, Start Num: 20  
Candidate Starts for ScienceWizSam\_40:  
(13, 30725), (Start: 20 @30761 has 88 MA's), (27, 30845), (35, 30950), (37, 30989), (39, 30998),

Gene: Shepard\_41 Start: 30896, Stop: 31132, Start Num: 20  
Candidate Starts for Shepard\_41:  
(14, 30878), (Start: 20 @30896 has 88 MA's), (32, 31046), (35, 31085),

Gene: Shiba\_36 Start: 27771, Stop: 28010, Start Num: 20  
Candidate Starts for Shiba\_36:  
(Start: 20 @27771 has 88 MA's), (23, 27828), (25, 27840), (29, 27894), (33, 27927),

Gene: Sloopyjoe\_36 Start: 27777, Stop: 28016, Start Num: 20  
Candidate Starts for Sloopyjoe\_36:  
(Start: 20 @27777 has 88 MA's), (23, 27834), (25, 27846), (29, 27900), (33, 27933),

Gene: Spain\_36 Start: 27776, Stop: 28015, Start Num: 20  
Candidate Starts for Spain\_36:  
(Start: 20 @27776 has 88 MA's), (23, 27833), (25, 27845), (33, 27932),

Gene: Sporto\_38 Start: 29260, Stop: 29499, Start Num: 20  
Candidate Starts for Sporto\_38:  
(Start: 20 @29260 has 88 MA's), (23, 29317), (25, 29329), (29, 29383), (33, 29416),

Gene: Sprinkle\_35 Start: 27600, Stop: 27842, Start Num: 20  
Candidate Starts for Sprinkle\_35:  
(Start: 20 @27600 has 88 MA's), (23, 27657), (25, 27669), (29, 27723), (33, 27756),

Gene: StarLord\_36 Start: 27777, Stop: 28016, Start Num: 20  
Candidate Starts for StarLord\_36:  
(Start: 20 @27777 has 88 MA's), (23, 27834), (25, 27846), (29, 27900), (33, 27933),

Gene: Stardom\_35 Start: 26802, Stop: 27023, Start Num: 20  
Candidate Starts for Stardom\_35:  
(Start: 20 @26802 has 88 MA's),

Gene: Stardrop\_37 Start: 29277, Stop: 29516, Start Num: 20  
Candidate Starts for Stardrop\_37:  
(7, 29142), (9, 29229), (16, 29262), (Start: 20 @29277 has 88 MA's), (26, 29355), (34, 29457), (35, 29466),

Gene: Stayer\_36 Start: 27772, Stop: 28011, Start Num: 20  
Candidate Starts for Stayer\_36:  
(Start: 20 @27772 has 88 MA's), (23, 27829), (25, 27841), (29, 27895), (33, 27928),

Gene: Sunny4976\_42 Start: 30976, Stop: 31218, Start Num: 20  
Candidate Starts for Sunny4976\_42:  
(Start: 20 @30976 has 88 MA's), (24, 31036), (38, 31207),

Gene: Synopsis\_37 Start: 30426, Stop: 30668, Start Num: 20  
Candidate Starts for Synopsis\_37:  
(13, 30390), (Start: 20 @30426 has 88 MA's), (27, 30510), (35, 30615), (37, 30654), (39, 30663),

Gene: Tatanka\_37 Start: 30589, Stop: 30831, Start Num: 20  
Candidate Starts for Tatanka\_37:  
(13, 30553), (Start: 20 @30589 has 88 MA's), (27, 30673), (35, 30778),

Gene: Teacup\_39 Start: 30574, Stop: 30816, Start Num: 20  
Candidate Starts for Teacup\_39:  
(13, 30538), (Start: 20 @30574 has 88 MA's), (27, 30658), (35, 30763),

Gene: Tenney120\_38 Start: 29158, Stop: 29397, Start Num: 20  
Candidate Starts for Tenney120\_38:  
(7, 29023), (9, 29110), (16, 29143), (Start: 20 @29158 has 88 MA's), (26, 29236), (34, 29338), (35, 29347),

Gene: Tenno\_38 Start: 31187, Stop: 31429, Start Num: 20

Candidate Starts for Tenno\_38:

(13, 31151), (Start: 20 @31187 has 88 MA's), (27, 31271), (35, 31376), (37, 31415), (39, 31424),

Gene: Tipton\_40 Start: 30627, Stop: 30863, Start Num: 20

Candidate Starts for Tipton\_40:

(14, 30609), (Start: 20 @30627 has 88 MA's), (32, 30777), (35, 30816),

Gene: Tokki\_39 Start: 30282, Stop: 30518, Start Num: 20

Candidate Starts for Tokki\_39:

(14, 30264), (Start: 20 @30282 has 88 MA's), (32, 30432), (35, 30471),

Gene: Tribby\_37 Start: 27633, Stop: 27854, Start Num: 20

Candidate Starts for Tribby\_37:

(Start: 20 @27633 has 88 MA's),

Gene: TrixiePhattel\_37 Start: 28923, Stop: 29162, Start Num: 20

Candidate Starts for TrixiePhattel\_37:

(16, 28908), (Start: 20 @28923 has 88 MA's), (35, 29112),

Gene: Truckee\_36 Start: 30146, Stop: 30382, Start Num: 20

Candidate Starts for Truckee\_36:

(Start: 20 @30146 has 88 MA's), (35, 30335),

Gene: Trustiboi\_39 Start: 30978, Stop: 31220, Start Num: 20

Candidate Starts for Trustiboi\_39:

(13, 30942), (Start: 20 @30978 has 88 MA's), (27, 31062), (35, 31167), (37, 31206), (39, 31215),

Gene: Uzumaki\_36 Start: 29214, Stop: 29453, Start Num: 20

Candidate Starts for Uzumaki\_36:

(7, 29079), (9, 29166), (16, 29199), (Start: 20 @29214 has 88 MA's), (26, 29292), (34, 29394), (35, 29403),

Gene: Westerlin\_39 Start: 32070, Stop: 32312, Start Num: 20

Candidate Starts for Westerlin\_39:

(13, 32034), (Start: 20 @32070 has 88 MA's), (27, 32154), (35, 32259), (37, 32298), (39, 32307),

Gene: Wigberry\_36 Start: 27317, Stop: 27565, Start Num: 19

Candidate Starts for Wigberry\_36:

(14, 27305), (Start: 19 @27317 has 2 MA's), (28, 27452),

Gene: Xenomorph\_34 Start: 27589, Stop: 27810, Start Num: 20

Candidate Starts for Xenomorph\_34:

(Start: 20 @27589 has 88 MA's),

Gene: YoshiYama\_37 Start: 27854, Stop: 28075, Start Num: 20

Candidate Starts for YoshiYama\_37:

(Start: 20 @27854 has 88 MA's),

Gene: Zeina\_38 Start: 29069, Stop: 29308, Start Num: 20

Candidate Starts for Zeina\_38:

(7, 28934), (9, 29021), (16, 29054), (Start: 20 @29069 has 88 MA's), (26, 29147), (34, 29249), (35, 29258),

Gene: Zippen\_40 Start: 31377, Stop: 31604, Start Num: 20

Candidate Starts for Zippen\_40:

(Start: 20 @31377 has 88 MA's), (22, 31380),