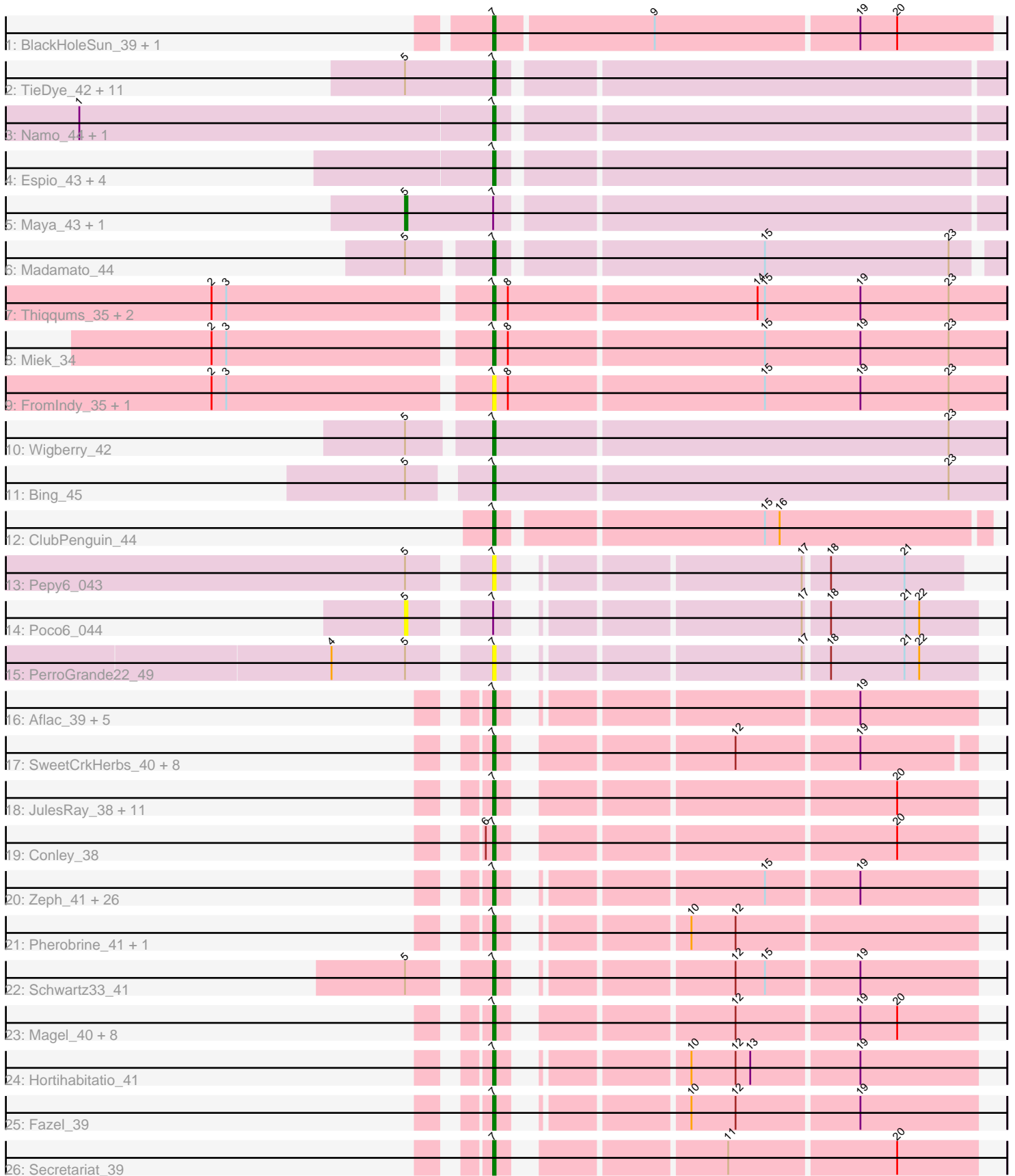


Pham 299976



Note: Tracks are now grouped by subcluster and scaled. Switching in subcluster is indicated by changes in track color. Track scale is now set by default to display the region 30 bp upstream of start 1 to 30 bp downstream of the last possible start. If this default region is judged to be packed too tightly with annotated starts, the track will be further scaled to only show that region of the ORF with annotated starts. This action will be indicated by adding "Zoomed" to the title. For starts, yellow indicates the location of called starts comprised solely of Glimmer/GeneMark auto-annotations, green indicates the location of called starts with at least 1 manual gene annotation.

Pham 299976 Report

This analysis was run 06/08/26 on database version 649.

Pham number 299976 has 106 members, 20 are drafts.

Phages represented in each track:

- Track 1 : BlackHoleSun_39, Navi1117_37
- Track 2 : TieDye_42, IceWarrior_42, Hoshi_43, Indigenous_43, CherryBlossom_43, Esketit_43, TaidaOne_43, FidgetOrca_43, HazuAndZazu_42, Olympichelado_43, Spectropatronm_43, TonyStarch_42
- Track 3 : Namu_44, Rima_44
- Track 4 : Espio_43, Popy_43, DrGrey_42, Soshi_42, FrodoSwaggins_43
- Track 5 : Maya_43, Jaylociraptor_43
- Track 6 : Madamoto_44
- Track 7 : Thiqqums_35, Rainydai_35, CricKo_35
- Track 8 : Miek_34
- Track 9 : FromIndy_35, Regigigas_36
- Track 10 : Wigberry_42
- Track 11 : Bing_45
- Track 12 : ClubPenguin_44
- Track 13 : Pepy6_043
- Track 14 : Poco6_044
- Track 15 : PerroGrande22_49
- Track 16 : Aflac_39, Jodelie19_41, OlgasClover_40, TenaciousP_40, Figliar_40, MajinBuu_40
- Track 17 : SweetCrkHerbs_40, Aloe25_43, Gusicorn_40, ShaggyRogers_41, Rickmore_37, BetterYeti_40, Perkunas_40, PestoPenguin_44, Talon44_40
- Track 18 : JulesRay_38, Dancer_38, Tairn4Wing_41, FortCran_38, Bugg_39, Avazak_39, Artorias_38, Trufflozitus_39, Petite_40, Captrips_38, ChickyNuggy_40, Football_40
- Track 19 : Conley_38
- Track 20 : Zeph_41, Runhaar_40, Tonaltzin_41, AlainaMarie_39, Hydrus_41, Phepper_40, Nithya_39, CWormy_39, Duffington_38, Chickenjars_39, Dialga_41, Luthien_41, Citrus_39, Madvan_40, EndAve_40, Untouchable_40, Nadmeg_41, Demure_38, Eddiemania_41, ArtetaBall_41, Vardy_40, Glintora_41, BluerMoon_39, Burley_40, Kenosha_40, Arataki_39, Crocheter_40
- Track 21 : Pherobrine_41, Mysticmoon_40
- Track 22 : Schwartz33_41
- Track 23 : Magel_40, Copybara_39, Tanis_39, Gill_39, Gravy_38, Odesza_38, Kerry_38, Roney_39, NoPickles_38
- Track 24 : Hortihabitatio_41
- Track 25 : Fazel_39
- Track 26 : Secretariat_39

Summary of Final Annotations (See graph section above for start numbers):

The start number called the most often in the published annotations is 7, it was called in 84 of the 86 non-draft genes in the pham.

Genes that call this "Most Annotated" start:

- Aflac_39, AlainaMarie_39, Aloe25_43, Arataki_39, ArtetaBall_41, Artorias_38, Avazak_39, BetterYeti_40, Bing_45, BlackHoleSun_39, BluerMoon_39, Bugg_39, Burley_40, CWormy_39, Captrips_38, Capybara_39, CherryBlossom_43, ChickyNugget_40, Chickenjars_39, Citrus_39, ClubPenguin_44, Conley_38, CricKo_35, Crocheter_40, Dancer_38, Demure_38, Dialga_41, DrGrey_42, Duffington_38, Eddiemania_41, EndAve_40, Esketit_43, Espio_43, Fazel_39, FidgetOrca_43, Figliar_40, Football_40, FortCran_38, FrodoSwaggins_43, FromIndy_35, Gill_39, Glintora_41, Gravy_38, Gusicorn_40, HazuAndZazu_42, Hortihabitatio_41, Hoshi_43, Hydrus_41, IceWarrior_42, Indigenous_43, Jodelie19_41, JulesRay_38, Kenosha_40, Kerry_38, Luthien_41, Madamoto_44, Madvan_40, Magel_40, MajinBuu_40, Miek_34, Mysticmoon_40, Nadmeg_41, Namu_44, Navi1117_37, Nithya_39, NoPickles_38, Odesza_38, OlgasClover_40, OlympicHelado_43, Pepy6_043, Perkunas_40, PerroGrande22_49, PestoPenguin_44, Petite_40, Phepper_40, Pherobrine_41, Popy_43, Rainydai_35, Regigigas_36, Rickmore_37, Rima_44, Roney_39, Runhaar_40, Schwartz33_41, Secretariat_39, ShaggyRogers_41, Soshi_42, Spectropatronm_43, SweetCrkHerbs_40, TaidaOne_43, Tairn4Wing_41, Talon44_40, Tanis_39, TenaciousP_40, Thiqqums_35, TieDye_42, Tonaltzin_41, TonyStarch_42, Trufflozitus_39, Untouchable_40, Vardy_40, Wigberry_42, Zeph_41,

Genes that have the "Most Annotated" start but do not call it:

- Jaylociraptor_43, Maya_43, POCO6_044,

Genes that do not have the "Most Annotated" start:

-

Summary by start number:

Start 5:

- Found in 21 of 106 (19.8%) of genes in pham
- Manual Annotations of this start: 2 of 86
- Called 14.3% of time when present
- Phage (with cluster) where this start called: Jaylociraptor_43 (BI1), Maya_43 (BI1), POCO6_044 (CC),

Start 7:

- Found in 106 of 106 (100.0%) of genes in pham
- Manual Annotations of this start: 84 of 86
- Called 97.2% of time when present
- Phage (with cluster) where this start called: Aflac_39 (DJ), AlainaMarie_39 (DJ), Aloe25_43 (DJ), Arataki_39 (DJ), ArtetaBall_41 (DJ), Artorias_38 (DJ), Avazak_39 (DJ), BetterYeti_40 (DJ), Bing_45 (BI5), BlackHoleSun_39 (AU6), BluerMoon_39 (DJ), Bugg_39 (DJ), Burley_40 (DJ), CWormy_39 (DJ), Captrips_38 (DJ),

Capybara_39 (DJ), CherryBlossom_43 (BI1), ChickyNuggy_40 (DJ), Chikenjars_39 (DJ), Citrus_39 (DJ), ClubPenguin_44 (BI7), Conley_38 (DJ), CricKo_35 (BI4), Crocheter_40 (DJ), Dancer_38 (DJ), Demure_38 (DJ), Dialga_41 (DJ), DrGrey_42 (BI1), Duffington_38 (DJ), Eddiemania_41 (DJ), EndAve_40 (DJ), Esketit_43 (BI1), Espio_43 (BI1), Fazel_39 (DJ), FidgetOrca_43 (BI1), Figliar_40 (DJ), Football_40 (DJ), FortCran_38 (DJ), FrodoSwaggins_43 (BI1), FromIndy_35 (BI4), Gill_39 (DJ), Glintora_41 (DJ), Gravy_38 (DJ), Gusicorn_40 (DJ), HazuAndZazu_42 (BI1), Hortihabitatio_41 (DJ), Hoshi_43 (BI1), Hydrus_41 (DJ), IceWarrior_42 (BI1), Indigenous_43 (BI1), Jodelie19_41 (DJ), JulesRay_38 (DJ), Kenosha_40 (DJ), Kerry_38 (DJ), Luthien_41 (DJ), Madamato_44 (BI1), Madvan_40 (DJ), Magel_40 (DJ), MajinBuu_40 (DJ), Miek_34 (BI4), Mysticmoon_40 (DJ), Nadmeg_41 (DJ), Namu_44 (BI1), Navi1117_37 (AU6), Nithya_39 (DJ), NoPickles_38 (DJ), Odesza_38 (DJ), OlgasClover_40 (DJ), OlympicHelado_43 (BI1), Pepy6_043 (CC), Perunas_40 (DJ), PerroGrande22_49 (CC), PestoPenguin_44 (DJ), Petite_40 (DJ), Phepper_40 (DJ), Pherobrine_41 (DJ), Popy_43 (BI1), Rainydai_35 (BI4), Regigigas_36 (BI4), Rickmore_37 (DJ), Rima_44 (BI1), Roney_39 (DJ), Runhaar_40 (DJ), Schwartz33_41 (DJ), Secretariat_39 (DJ), ShaggyRogers_41 (DJ), Soshi_42 (BI1), Spectropatronm_43 (BI1), SweetCrkHerbs_40 (DJ), TaidaOne_43 (BI1), Tairn4Wing_41 (DJ), Talon44_40 (DJ), Tanis_39 (DJ), TenaciousP_40 (DJ), Thiqqums_35 (BI4), TieDye_42 (BI1), Tonaltzin_41 (DJ), TonyStarch_42 (BI1), Trufflozitus_39 (DJ), Untouchable_40 (DJ), Vardy_40 (DJ), Wigberry_42 (BI5), Zeph_41 (DJ),

Summary by clusters:

There are 7 clusters represented in this pham: DJ, CC, AU6, BI7, BI4, BI5, BI1,

Info for manual annotations of cluster AU6:

- Start number 7 was manually annotated 1 time for cluster AU6.

Info for manual annotations of cluster BI1:

- Start number 5 was manually annotated 2 times for cluster BI1.
- Start number 7 was manually annotated 20 times for cluster BI1.

Info for manual annotations of cluster BI4:

- Start number 7 was manually annotated 4 times for cluster BI4.

Info for manual annotations of cluster BI5:

- Start number 7 was manually annotated 2 times for cluster BI5.

Info for manual annotations of cluster BI7:

- Start number 7 was manually annotated 1 time for cluster BI7.

Info for manual annotations of cluster DJ:

- Start number 7 was manually annotated 56 times for cluster DJ.

Gene Information:

Gene: Aflac_39 Start: 32676, Stop: 32849, Start Num: 7

Candidate Starts for Aflac_39:

(Start: 7 @32676 has 84 MA's), (19, 32802),

Gene: AlainaMarie_39 Start: 32655, Stop: 32828, Start Num: 7

Candidate Starts for AlainaMarie_39:

(Start: 7 @32655 has 84 MA's), (15, 32745), (19, 32781),

Gene: Aloe25_43 Start: 32722, Stop: 32895, Start Num: 7

Candidate Starts for Aloe25_43:

(Start: 7 @32722 has 84 MA's), (12, 32800), (19, 32848),

Gene: Arataki_39 Start: 32015, Stop: 32188, Start Num: 7

Candidate Starts for Arataki_39:

(Start: 7 @32015 has 84 MA's), (15, 32105), (19, 32141),

Gene: ArtetaBall_41 Start: 33215, Stop: 33388, Start Num: 7

Candidate Starts for ArtetaBall_41:

(Start: 7 @33215 has 84 MA's), (15, 33305), (19, 33341),

Gene: Artorias_38 Start: 30361, Stop: 30537, Start Num: 7

Candidate Starts for Artorias_38:

(Start: 7 @30361 has 84 MA's), (20, 30505),

Gene: Avazak_39 Start: 30729, Stop: 30905, Start Num: 7

Candidate Starts for Avazak_39:

(Start: 7 @30729 has 84 MA's), (20, 30873),

Gene: BetterYeti_40 Start: 32721, Stop: 32894, Start Num: 7

Candidate Starts for BetterYeti_40:

(Start: 7 @32721 has 84 MA's), (12, 32799), (19, 32847),

Gene: Bing_45 Start: 30261, Stop: 30467, Start Num: 7

Candidate Starts for Bing_45:

(Start: 5 @30234 has 2 MA's), (Start: 7 @30261 has 84 MA's), (23, 30444),

Gene: BlackHoleSun_39 Start: 28690, Stop: 28887, Start Num: 7

Candidate Starts for BlackHoleSun_39:

(Start: 7 @28690 has 84 MA's), (9, 28753), (19, 28834), (20, 28849),

Gene: BluerMoon_39 Start: 32673, Stop: 32846, Start Num: 7

Candidate Starts for BluerMoon_39:

(Start: 7 @32673 has 84 MA's), (15, 32763), (19, 32799),

Gene: Bugg_39 Start: 30408, Stop: 30584, Start Num: 7

Candidate Starts for Bugg_39:

(Start: 7 @30408 has 84 MA's), (20, 30552),

Gene: Burley_40 Start: 32679, Stop: 32852, Start Num: 7

Candidate Starts for Burley_40:

(Start: 7 @32679 has 84 MA's), (15, 32769), (19, 32805),

Gene: CWormy_39 Start: 32380, Stop: 32553, Start Num: 7

Candidate Starts for CWormy_39:

(Start: 7 @32380 has 84 MA's), (15, 32470), (19, 32506),

Gene: Captrips_38 Start: 30401, Stop: 30577, Start Num: 7

Candidate Starts for Captrips_38:

(Start: 7 @30401 has 84 MA's), (20, 30545),

Gene: Capybara_39 Start: 30791, Stop: 30967, Start Num: 7

Candidate Starts for Capybara_39:

(Start: 7 @30791 has 84 MA's), (12, 30872), (19, 30920), (20, 30935),

Gene: CherryBlossom_43 Start: 29659, Stop: 29856, Start Num: 7

Candidate Starts for CherryBlossom_43:

(Start: 5 @29623 has 2 MA's), (Start: 7 @29659 has 84 MA's),

Gene: ChickyNuggy_40 Start: 30470, Stop: 30646, Start Num: 7

Candidate Starts for ChickyNuggy_40:

(Start: 7 @30470 has 84 MA's), (20, 30614),

Gene: Chikenjars_39 Start: 32666, Stop: 32839, Start Num: 7

Candidate Starts for Chikenjars_39:

(Start: 7 @32666 has 84 MA's), (15, 32756), (19, 32792),

Gene: Citrus_39 Start: 32942, Stop: 33115, Start Num: 7

Candidate Starts for Citrus_39:

(Start: 7 @32942 has 84 MA's), (15, 33032), (19, 33068),

Gene: ClubPenguin_44 Start: 29840, Stop: 30031, Start Num: 7

Candidate Starts for ClubPenguin_44:

(Start: 7 @29840 has 84 MA's), (15, 29942), (16, 29948),

Gene: Conley_38 Start: 31332, Stop: 31508, Start Num: 7

Candidate Starts for Conley_38:

(6, 31329), (Start: 7 @31332 has 84 MA's), (20, 31476),

Gene: CricKo_35 Start: 27119, Stop: 27325, Start Num: 7

Candidate Starts for CricKo_35:

(2, 27011), (3, 27017), (Start: 7 @27119 has 84 MA's), (8, 27125), (14, 27224), (15, 27227), (19, 27266), (23, 27302),

Gene: Crocheter_40 Start: 33073, Stop: 33246, Start Num: 7

Candidate Starts for Crocheter_40:

(Start: 7 @33073 has 84 MA's), (15, 33163), (19, 33199),

Gene: Dancer_38 Start: 30101, Stop: 30277, Start Num: 7

Candidate Starts for Dancer_38:

(Start: 7 @30101 has 84 MA's), (20, 30245),

Gene: Demure_38 Start: 32015, Stop: 32188, Start Num: 7

Candidate Starts for Demure_38:

(Start: 7 @32015 has 84 MA's), (15, 32105), (19, 32141),

Gene: Dialga_41 Start: 33234, Stop: 33407, Start Num: 7

Candidate Starts for Dialga_41:

(Start: 7 @33234 has 84 MA's), (15, 33324), (19, 33360),

Gene: DrGrey_42 Start: 29999, Stop: 30196, Start Num: 7
Candidate Starts for DrGrey_42:
(Start: 7 @29999 has 84 MA's),

Gene: Duffington_38 Start: 32328, Stop: 32501, Start Num: 7
Candidate Starts for Duffington_38:
(Start: 7 @32328 has 84 MA's), (15, 32418), (19, 32454),

Gene: Eddiemania_41 Start: 33582, Stop: 33755, Start Num: 7
Candidate Starts for Eddiemania_41:
(Start: 7 @33582 has 84 MA's), (15, 33672), (19, 33708),

Gene: EndAve_40 Start: 32835, Stop: 33008, Start Num: 7
Candidate Starts for EndAve_40:
(Start: 7 @32835 has 84 MA's), (15, 32925), (19, 32961),

Gene: Esketit_43 Start: 29736, Stop: 29933, Start Num: 7
Candidate Starts for Esketit_43:
(Start: 5 @29700 has 2 MA's), (Start: 7 @29736 has 84 MA's),

Gene: Espio_43 Start: 30394, Stop: 30591, Start Num: 7
Candidate Starts for Espio_43:
(Start: 7 @30394 has 84 MA's),

Gene: Fazel_39 Start: 32311, Stop: 32484, Start Num: 7
Candidate Starts for Fazel_39:
(Start: 7 @32311 has 84 MA's), (10, 32371), (12, 32389), (19, 32437),

Gene: FidgetOrca_43 Start: 29741, Stop: 29938, Start Num: 7
Candidate Starts for FidgetOrca_43:
(Start: 5 @29705 has 2 MA's), (Start: 7 @29741 has 84 MA's),

Gene: Figliar_40 Start: 32982, Stop: 33155, Start Num: 7
Candidate Starts for Figliar_40:
(Start: 7 @32982 has 84 MA's), (19, 33108),

Gene: Football_40 Start: 30107, Stop: 30283, Start Num: 7
Candidate Starts for Football_40:
(Start: 7 @30107 has 84 MA's), (20, 30251),

Gene: FortCran_38 Start: 30361, Stop: 30537, Start Num: 7
Candidate Starts for FortCran_38:
(Start: 7 @30361 has 84 MA's), (20, 30505),

Gene: FrodoSwaggins_43 Start: 30393, Stop: 30590, Start Num: 7
Candidate Starts for FrodoSwaggins_43:
(Start: 7 @30393 has 84 MA's),

Gene: FromIndy_35 Start: 26723, Stop: 26929, Start Num: 7
Candidate Starts for FromIndy_35:
(2, 26615), (3, 26621), (Start: 7 @26723 has 84 MA's), (8, 26729), (15, 26831), (19, 26870), (23, 26906),

Gene: Gill_39 Start: 30808, Stop: 30984, Start Num: 7
Candidate Starts for Gill_39:
(Start: 7 @30808 has 84 MA's), (12, 30889), (19, 30937), (20, 30952),

Gene: Glintora_41 Start: 33299, Stop: 33472, Start Num: 7
Candidate Starts for Glintora_41:
(Start: 7 @33299 has 84 MA's), (15, 33389), (19, 33425),

Gene: Gravy_38 Start: 30481, Stop: 30657, Start Num: 7
Candidate Starts for Gravy_38:
(Start: 7 @30481 has 84 MA's), (12, 30562), (19, 30610), (20, 30625),

Gene: Gusicorn_40 Start: 32722, Stop: 32895, Start Num: 7
Candidate Starts for Gusicorn_40:
(Start: 7 @32722 has 84 MA's), (12, 32800), (19, 32848),

Gene: HazuAndZazu_42 Start: 29995, Stop: 30192, Start Num: 7
Candidate Starts for HazuAndZazu_42:
(Start: 5 @29959 has 2 MA's), (Start: 7 @29995 has 84 MA's),

Gene: Hortihabitatio_41 Start: 32758, Stop: 32931, Start Num: 7
Candidate Starts for Hortihabitatio_41:
(Start: 7 @32758 has 84 MA's), (10, 32818), (12, 32836), (13, 32842), (19, 32884),

Gene: Hoshi_43 Start: 29736, Stop: 29933, Start Num: 7
Candidate Starts for Hoshi_43:
(Start: 5 @29700 has 2 MA's), (Start: 7 @29736 has 84 MA's),

Gene: Hydrus_41 Start: 33591, Stop: 33764, Start Num: 7
Candidate Starts for Hydrus_41:
(Start: 7 @33591 has 84 MA's), (15, 33681), (19, 33717),

Gene: IceWarrior_42 Start: 29436, Stop: 29633, Start Num: 7
Candidate Starts for IceWarrior_42:
(Start: 5 @29400 has 2 MA's), (Start: 7 @29436 has 84 MA's),

Gene: Indigenous_43 Start: 29736, Stop: 29933, Start Num: 7
Candidate Starts for Indigenous_43:
(Start: 5 @29700 has 2 MA's), (Start: 7 @29736 has 84 MA's),

Gene: Jaylociraptor_43 Start: 29700, Stop: 29933, Start Num: 5
Candidate Starts for Jaylociraptor_43:
(Start: 5 @29700 has 2 MA's), (Start: 7 @29736 has 84 MA's),

Gene: Jodelie19_41 Start: 34437, Stop: 34610, Start Num: 7
Candidate Starts for Jodelie19_41:
(Start: 7 @34437 has 84 MA's), (19, 34563),

Gene: JulesRay_38 Start: 30395, Stop: 30571, Start Num: 7
Candidate Starts for JulesRay_38:
(Start: 7 @30395 has 84 MA's), (20, 30539),

Gene: Kenosha_40 Start: 33483, Stop: 33656, Start Num: 7

Candidate Starts for Kenosha_40:

(Start: 7 @33483 has 84 MA's), (15, 33573), (19, 33609),

Gene: Kerry_38 Start: 30481, Stop: 30657, Start Num: 7

Candidate Starts for Kerry_38:

(Start: 7 @30481 has 84 MA's), (12, 30562), (19, 30610), (20, 30625),

Gene: Luthien_41 Start: 32833, Stop: 33006, Start Num: 7

Candidate Starts for Luthien_41:

(Start: 7 @32833 has 84 MA's), (15, 32923), (19, 32959),

Gene: Madamoto_44 Start: 29907, Stop: 30101, Start Num: 7

Candidate Starts for Madamoto_44:

(Start: 5 @29877 has 2 MA's), (Start: 7 @29907 has 84 MA's), (15, 30009), (23, 30084),

Gene: Madvan_40 Start: 32714, Stop: 32887, Start Num: 7

Candidate Starts for Madvan_40:

(Start: 7 @32714 has 84 MA's), (15, 32804), (19, 32840),

Gene: Magel_40 Start: 30712, Stop: 30888, Start Num: 7

Candidate Starts for Magel_40:

(Start: 7 @30712 has 84 MA's), (12, 30793), (19, 30841), (20, 30856),

Gene: MajinBuu_40 Start: 33009, Stop: 33182, Start Num: 7

Candidate Starts for MajinBuu_40:

(Start: 7 @33009 has 84 MA's), (19, 33135),

Gene: Maya_43 Start: 29714, Stop: 29947, Start Num: 5

Candidate Starts for Maya_43:

(Start: 5 @29714 has 2 MA's), (Start: 7 @29750 has 84 MA's),

Gene: Miek_34 Start: 26735, Stop: 26941, Start Num: 7

Candidate Starts for Miek_34:

(2, 26627), (3, 26633), (Start: 7 @26735 has 84 MA's), (8, 26741), (15, 26843), (19, 26882), (23, 26918),

Gene: Mysticmoon_40 Start: 33056, Stop: 33229, Start Num: 7

Candidate Starts for Mysticmoon_40:

(Start: 7 @33056 has 84 MA's), (10, 33116), (12, 33134),

Gene: Nadmeg_41 Start: 34146, Stop: 34319, Start Num: 7

Candidate Starts for Nadmeg_41:

(Start: 7 @34146 has 84 MA's), (15, 34236), (19, 34272),

Gene: Namo_44 Start: 30082, Stop: 30279, Start Num: 7

Candidate Starts for Namo_44:

(1, 29914), (Start: 7 @30082 has 84 MA's),

Gene: Navi1117_37 Start: 28947, Stop: 29144, Start Num: 7

Candidate Starts for Navi1117_37:

(Start: 7 @28947 has 84 MA's), (9, 29010), (19, 29091), (20, 29106),

Gene: Nithya_39 Start: 32656, Stop: 32829, Start Num: 7

Candidate Starts for Nithya_39:

(Start: 7 @32656 has 84 MA's), (15, 32746), (19, 32782),

Gene: NoPickles_38 Start: 30113, Stop: 30289, Start Num: 7

Candidate Starts for NoPickles_38:

(Start: 7 @30113 has 84 MA's), (12, 30194), (19, 30242), (20, 30257),

Gene: Odesza_38 Start: 30482, Stop: 30658, Start Num: 7

Candidate Starts for Odesza_38:

(Start: 7 @30482 has 84 MA's), (12, 30563), (19, 30611), (20, 30626),

Gene: OlgasClover_40 Start: 33721, Stop: 33894, Start Num: 7

Candidate Starts for OlgasClover_40:

(Start: 7 @33721 has 84 MA's), (19, 33847),

Gene: OlympicHelado_43 Start: 29757, Stop: 29954, Start Num: 7

Candidate Starts for OlympicHelado_43:

(Start: 5 @29721 has 2 MA's), (Start: 7 @29757 has 84 MA's),

Gene: Pepy6_043 Start: 39982, Stop: 40149, Start Num: 7

Candidate Starts for Pepy6_043:

(Start: 5 @39955 has 2 MA's), (Start: 7 @39982 has 84 MA's), (17, 40087), (18, 40096), (21, 40126),

Gene: Perkunas_40 Start: 30763, Stop: 30936, Start Num: 7

Candidate Starts for Perkunas_40:

(Start: 7 @30763 has 84 MA's), (12, 30844), (19, 30892),

Gene: PerroGrande22_49 Start: 42016, Stop: 42189, Start Num: 7

Candidate Starts for PerroGrande22_49:

(4, 41959), (Start: 5 @41989 has 2 MA's), (Start: 7 @42016 has 84 MA's), (17, 42121), (18, 42130), (21, 42160), (22, 42166),

Gene: PestoPenguin_44 Start: 32722, Stop: 32895, Start Num: 7

Candidate Starts for PestoPenguin_44:

(Start: 7 @32722 has 84 MA's), (12, 32800), (19, 32848),

Gene: Petite_40 Start: 31866, Stop: 32042, Start Num: 7

Candidate Starts for Petite_40:

(Start: 7 @31866 has 84 MA's), (20, 32010),

Gene: Phepper_40 Start: 32713, Stop: 32886, Start Num: 7

Candidate Starts for Phepper_40:

(Start: 7 @32713 has 84 MA's), (15, 32803), (19, 32839),

Gene: Pherobrine_41 Start: 33357, Stop: 33530, Start Num: 7

Candidate Starts for Pherobrine_41:

(Start: 7 @33357 has 84 MA's), (10, 33417), (12, 33435),

Gene: Poco6_044 Start: 42042, Stop: 42242, Start Num: 5

Candidate Starts for Poco6_044:

(Start: 5 @42042 has 2 MA's), (Start: 7 @42069 has 84 MA's), (17, 42174), (18, 42183), (21, 42213), (22, 42219),

Gene: Popy_43 Start: 30393, Stop: 30590, Start Num: 7

Candidate Starts for Popy_43:

(Start: 7 @30393 has 84 MA's),

Gene: Rainydai_35 Start: 27119, Stop: 27325, Start Num: 7

Candidate Starts for Rainydai_35:

(2, 27011), (3, 27017), (Start: 7 @27119 has 84 MA's), (8, 27125), (14, 27224), (15, 27227), (19, 27266), (23, 27302),

Gene: Regigigas_36 Start: 27119, Stop: 27325, Start Num: 7

Candidate Starts for Regigigas_36:

(2, 27011), (3, 27017), (Start: 7 @27119 has 84 MA's), (8, 27125), (15, 27227), (19, 27266), (23, 27302),

Gene: Rickmore_37 Start: 30767, Stop: 30940, Start Num: 7

Candidate Starts for Rickmore_37:

(Start: 7 @30767 has 84 MA's), (12, 30845), (19, 30893),

Gene: Rima_44 Start: 30082, Stop: 30279, Start Num: 7

Candidate Starts for Rima_44:

(1, 29914), (Start: 7 @30082 has 84 MA's),

Gene: Roney_39 Start: 30803, Stop: 30979, Start Num: 7

Candidate Starts for Roney_39:

(Start: 7 @30803 has 84 MA's), (12, 30884), (19, 30932), (20, 30947),

Gene: Runhaar_40 Start: 32714, Stop: 32887, Start Num: 7

Candidate Starts for Runhaar_40:

(Start: 7 @32714 has 84 MA's), (15, 32804), (19, 32840),

Gene: Schwartz33_41 Start: 33151, Stop: 33324, Start Num: 7

Candidate Starts for Schwartz33_41:

(Start: 5 @33124 has 2 MA's), (Start: 7 @33151 has 84 MA's), (12, 33229), (15, 33241), (19, 33277),

Gene: Secretariat_39 Start: 32092, Stop: 32268, Start Num: 7

Candidate Starts for Secretariat_39:

(Start: 7 @32092 has 84 MA's), (11, 32170), (20, 32236),

Gene: ShaggyRogers_41 Start: 32720, Stop: 32893, Start Num: 7

Candidate Starts for ShaggyRogers_41:

(Start: 7 @32720 has 84 MA's), (12, 32798), (19, 32846),

Gene: Soshi_42 Start: 30005, Stop: 30202, Start Num: 7

Candidate Starts for Soshi_42:

(Start: 7 @30005 has 84 MA's),

Gene: Spectropatronm_43 Start: 29736, Stop: 29933, Start Num: 7

Candidate Starts for Spectropatronm_43:

(Start: 5 @29700 has 2 MA's), (Start: 7 @29736 has 84 MA's),

Gene: SweetCrkHerbs_40 Start: 30436, Stop: 30609, Start Num: 7

Candidate Starts for SweetCrkHerbs_40:

(Start: 7 @30436 has 84 MA's), (12, 30517), (19, 30565),

Gene: TaidaOne_43 Start: 30290, Stop: 30487, Start Num: 7
Candidate Starts for TaidaOne_43:
(Start: 5 @30254 has 2 MA's), (Start: 7 @30290 has 84 MA's),

Gene: Tairn4Wing_41 Start: 30751, Stop: 30927, Start Num: 7
Candidate Starts for Tairn4Wing_41:
(Start: 7 @30751 has 84 MA's), (20, 30895),

Gene: Talon44_40 Start: 30778, Stop: 30951, Start Num: 7
Candidate Starts for Talon44_40:
(Start: 7 @30778 has 84 MA's), (12, 30859), (19, 30907),

Gene: Tanis_39 Start: 30654, Stop: 30830, Start Num: 7
Candidate Starts for Tanis_39:
(Start: 7 @30654 has 84 MA's), (12, 30735), (19, 30783), (20, 30798),

Gene: TenaciousP_40 Start: 34101, Stop: 34274, Start Num: 7
Candidate Starts for TenaciousP_40:
(Start: 7 @34101 has 84 MA's), (19, 34227),

Gene: Thiqqums_35 Start: 27119, Stop: 27325, Start Num: 7
Candidate Starts for Thiqqums_35:
(2, 27011), (3, 27017), (Start: 7 @27119 has 84 MA's), (8, 27125), (14, 27224), (15, 27227), (19, 27266), (23, 27302),

Gene: TieDye_42 Start: 29334, Stop: 29531, Start Num: 7
Candidate Starts for TieDye_42:
(Start: 5 @29298 has 2 MA's), (Start: 7 @29334 has 84 MA's),

Gene: Tonaltzin_41 Start: 32671, Stop: 32844, Start Num: 7
Candidate Starts for Tonaltzin_41:
(Start: 7 @32671 has 84 MA's), (15, 32761), (19, 32797),

Gene: TonyStarch_42 Start: 29439, Stop: 29636, Start Num: 7
Candidate Starts for TonyStarch_42:
(Start: 5 @29403 has 2 MA's), (Start: 7 @29439 has 84 MA's),

Gene: Trufflozitus_39 Start: 30752, Stop: 30928, Start Num: 7
Candidate Starts for Trufflozitus_39:
(Start: 7 @30752 has 84 MA's), (20, 30896),

Gene: Untouchable_40 Start: 33073, Stop: 33246, Start Num: 7
Candidate Starts for Untouchable_40:
(Start: 7 @33073 has 84 MA's), (15, 33163), (19, 33199),

Gene: Vardy_40 Start: 32680, Stop: 32853, Start Num: 7
Candidate Starts for Vardy_40:
(Start: 7 @32680 has 84 MA's), (15, 32770), (19, 32806),

Gene: Wigberry_42 Start: 28830, Stop: 29036, Start Num: 7
Candidate Starts for Wigberry_42:

(Start: 5 @28800 has 2 MA's), (Start: 7 @28830 has 84 MA's), (23, 29013),

Gene: Zeph_41 Start: 33571, Stop: 33744, Start Num: 7

Candidate Starts for Zeph_41:

(Start: 7 @33571 has 84 MA's), (15, 33661), (19, 33697),