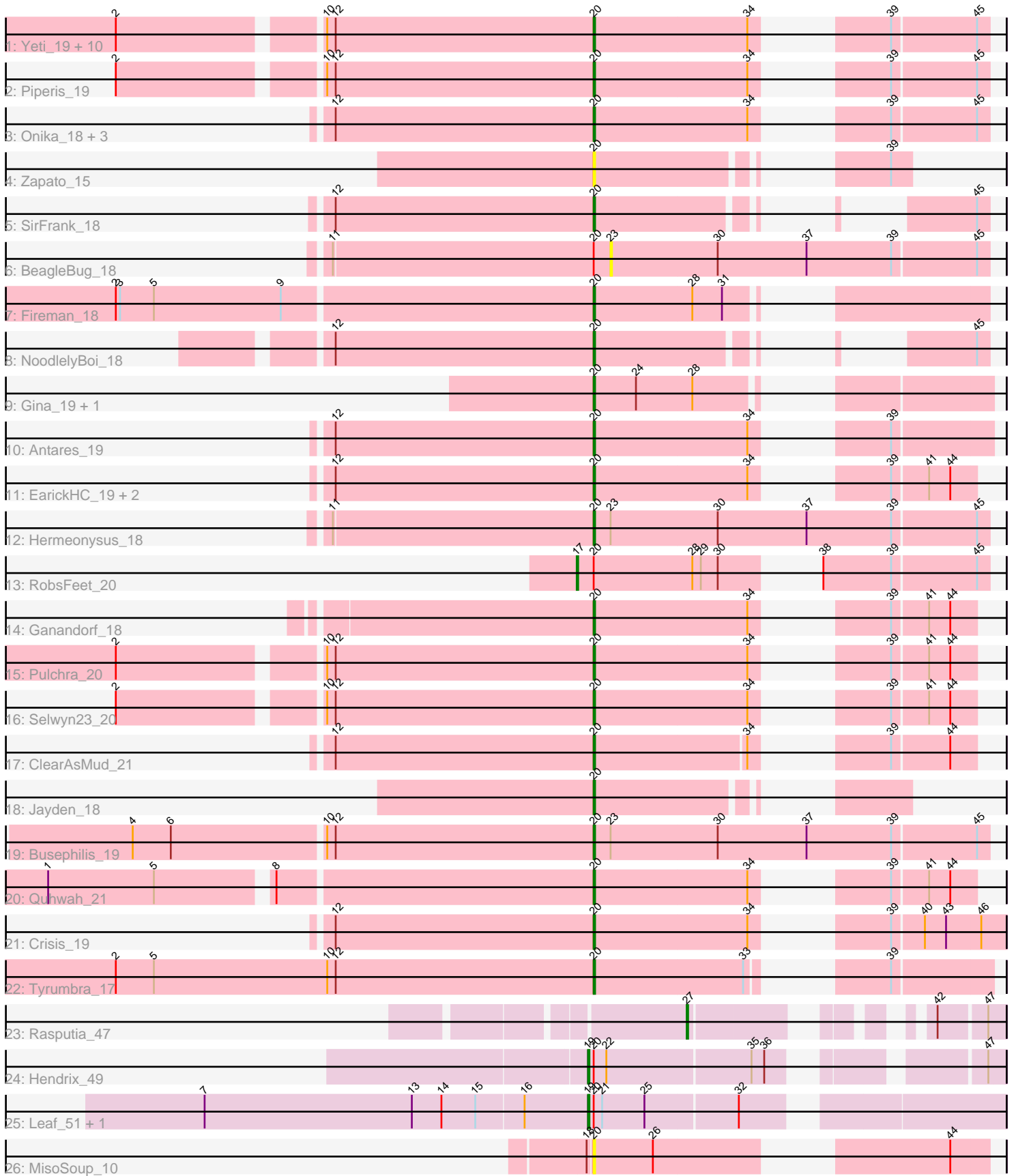


Pham 300179



Note: Tracks are now grouped by subcluster and scaled. Switching in subcluster is indicated by changes in track color. Track scale is now set by default to display the region 30 bp upstream of start 1 to 30 bp downstream of the last possible start. If this default region is judged to be packed too tightly with annotated starts, the track will be further scaled to only show that region of the ORF with annotated starts. This action will be indicated by adding "Zoomed" to the title. For starts, yellow indicates the location of called starts comprised solely of Glimmer/GeneMark auto-annotations, green indicates the location of called starts with at least 1 manual gene annotation.

Pham 300179 Report

This analysis was run 06/08/26 on database version 649.

Pham number 300179 has 43 members, 4 are drafts.

Phages represented in each track:

- Track 1 : Yeti_19, Ramiel05_18, LittleFortune_20, Kowalski_18, Phorgeous_18, Rockwell_18, Cranjis_20, Savannah_18, Honeyfin_20, BrazzalePHS_18, Scumberland_20
- Track 2 : Piperis_19
- Track 3 : Onika_18, CrazyRich_18, Shotgun_18, Phrancesco_20
- Track 4 : Zapato_15
- Track 5 : SirFrank_18
- Track 6 : BeagleBug_18
- Track 7 : Fireman_18
- Track 8 : NoodlelyBoi_18
- Track 9 : Gina_19, Teamocil_19
- Track 10 : Antares_19
- Track 11 : EarickHC_19, PhedwardCullen_18, KaiHaiDragon_19
- Track 12 : Hermeonysus_18
- Track 13 : RobsFeet_20
- Track 14 : Ganandorf_18
- Track 15 : Pulchra_20
- Track 16 : Selwyn23_20
- Track 17 : ClearAsMud_21
- Track 18 : Jayden_18
- Track 19 : Busephilis_19
- Track 20 : Quhwah_21
- Track 21 : Crisis_19
- Track 22 : Tyumbra_17
- Track 23 : Rasputia_47
- Track 24 : Hendrix_49
- Track 25 : Leaf_51, Dewdrop_51
- Track 26 : MisoSoup_10

Summary of Final Annotations (See graph section above for start numbers):

The start number called the most often in the published annotations is 20, it was called in 34 of the 39 non-draft genes in the pham.

Genes that call this "Most Annotated" start:

- Antares_19, BrazzalePHS_18, Busephilis_19, ClearAsMud_21, Cranjis_20, CrazyRich_18, Crisis_19, EarickHC_19, Fireman_18, Ganandorf_18, Gina_19, Hermeonysus_18, Honeyfin_20, Jayden_18, KaiHaiDragon_19, Kowalski_18, LittleFortune_20, MisoSoup_10, NoodlelyBoi_18, Onika_18, PhedwardCullen_18, Phorgeous_18, Phrancesco_20, Piperis_19, Pulchra_20, Quhwah_21, Ramiel05_18, Rockwell_18, Savannah_18, Scumberland_20, Selwyn23_20, Shotgun_18, SirFrank_18, Teamocil_19, Tyrumbra_17, Yeti_19, Zapato_15,

Genes that have the "Most Annotated" start but do not call it:

- BeagleBug_18, Dewdrop_51, Hendrix_49, Leaf_51, RobsFeet_20,

Genes that do not have the "Most Annotated" start:

- Rasputia_47,

Summary by start number:

Start 17:

- Found in 1 of 43 (2.3%) of genes in pham
- Manual Annotations of this start: 1 of 39
- Called 100.0% of time when present
- Phage (with cluster) where this start called: RobsFeet_20 (EC),

Start 19:

- Found in 3 of 43 (7.0%) of genes in pham
- Manual Annotations of this start: 3 of 39
- Called 100.0% of time when present
- Phage (with cluster) where this start called: Dewdrop_51 (GC), Hendrix_49 (GC), Leaf_51 (GC),

Start 20:

- Found in 42 of 43 (97.7%) of genes in pham
- Manual Annotations of this start: 34 of 39
- Called 88.1% of time when present
- Phage (with cluster) where this start called: Antares_19 (EC), BrazzalePHS_18 (EC), Busephilis_19 (EC), ClearAsMud_21 (EC), Cranjis_20 (EC), CrazyRich_18 (EC), Crisis_19 (EC), EarickHC_19 (EC), Fireman_18 (EC), Ganandorf_18 (EC), Gina_19 (EC), Hermeonysus_18 (EC), Honeyfin_20 (EC), Jayden_18 (EC), KaiHaiDragon_19 (EC), Kowalski_18 (EC), LittleFortune_20 (EC), MisoSoup_10 (GM), NoodlelyBoi_18 (EC), Onika_18 (EC), PhedwardCullen_18 (EC), Phorgeous_18 (EC), Phrancesco_20 (EC), Piperis_19 (EC), Pulchra_20 (EC), Quhwah_21 (EC), Ramiel05_18 (EC), Rockwell_18 (EC), Savannah_18 (EC), Scumberland_20 (EC), Selwyn23_20 (EC), Shotgun_18 (EC), SirFrank_18 (EC), Teamocil_19 (EC), Tyrumbra_17 (EC), Yeti_19 (EC), Zapato_15 (EC),

Start 23:

- Found in 3 of 43 (7.0%) of genes in pham
- No Manual Annotations of this start.
- Called 33.3% of time when present
- Phage (with cluster) where this start called: BeagleBug_18 (EC),

Start 27:

- Found in 1 of 43 (2.3%) of genes in pham

- Manual Annotations of this start: 1 of 39
- Called 100.0% of time when present
- Phage (with cluster) where this start called: Rasputia_47 (GC),

Summary by clusters:

There are 3 clusters represented in this pham: GM, GC, EC,

Info for manual annotations of cluster EC:

- Start number 17 was manually annotated 1 time for cluster EC.
- Start number 20 was manually annotated 34 times for cluster EC.

Info for manual annotations of cluster GC:

- Start number 19 was manually annotated 3 times for cluster GC.
- Start number 27 was manually annotated 1 time for cluster GC.

Gene Information:

Gene: Antares_19 Start: 8205, Stop: 8429, Start Num: 20

Candidate Starts for Antares_19:

(12, 8022), (Start: 20 @8205 has 34 MA's), (34, 8313), (39, 8361),

Gene: BeagleBug_18 Start: 7964, Stop: 8227, Start Num: 23

Candidate Starts for BeagleBug_18:

(11, 7769), (Start: 20 @7952 has 34 MA's), (23, 7964), (30, 8039), (37, 8102), (39, 8162), (45, 8219),

Gene: BrazzalePHS_18 Start: 8020, Stop: 8241, Start Num: 20

Candidate Starts for BrazzalePHS_18:

(2, 7699), (10, 7831), (12, 7837), (Start: 20 @8020 has 34 MA's), (34, 8128), (39, 8176), (45, 8233),

Gene: Busephilis_19 Start: 7907, Stop: 8182, Start Num: 20

Candidate Starts for Busephilis_19:

(4, 7586), (6, 7613), (10, 7718), (12, 7724), (Start: 20 @7907 has 34 MA's), (23, 7919), (30, 7994), (37, 8057), (39, 8117), (45, 8174),

Gene: ClearAsMud_21 Start: 8723, Stop: 8932, Start Num: 20

Candidate Starts for ClearAsMud_21:

(12, 8540), (Start: 20 @8723 has 34 MA's), (34, 8828), (39, 8876), (44, 8915),

Gene: Cranjis_20 Start: 8186, Stop: 8407, Start Num: 20

Candidate Starts for Cranjis_20:

(2, 7865), (10, 7997), (12, 8003), (Start: 20 @8186 has 34 MA's), (34, 8294), (39, 8342), (45, 8399),

Gene: CrazyRich_18 Start: 7993, Stop: 8214, Start Num: 20

Candidate Starts for CrazyRich_18:

(12, 7810), (Start: 20 @7993 has 34 MA's), (34, 8101), (39, 8149), (45, 8206),

Gene: Crisis_19 Start: 7832, Stop: 8065, Start Num: 20

Candidate Starts for Crisis_19:

(12, 7649), (Start: 20 @7832 has 34 MA's), (34, 7940), (39, 7988), (40, 8009), (43, 8024), (46, 8048),

Gene: Dewdrop_51 Start: 22338, Stop: 22601, Start Num: 19

Candidate Starts for Dewdrop_51:

(7, 22068), (13, 22215), (14, 22236), (15, 22260), (16, 22293), (Start: 19 @22338 has 3 MA's), (Start: 20 @22341 has 34 MA's), (21, 22347), (25, 22377), (32, 22440),

Gene: EarickHC_19 Start: 7898, Stop: 8110, Start Num: 20

Candidate Starts for EarickHC_19:

(12, 7715), (Start: 20 @7898 has 34 MA's), (34, 8006), (39, 8054), (41, 8078), (44, 8093),

Gene: Fireman_18 Start: 7477, Stop: 7695, Start Num: 20

Candidate Starts for Fireman_18:

(2, 7144), (3, 7147), (5, 7171), (9, 7261), (Start: 20 @7477 has 34 MA's), (28, 7546), (31, 7567),

Gene: Ganandorf_18 Start: 8046, Stop: 8258, Start Num: 20

Candidate Starts for Ganandorf_18:

(Start: 20 @8046 has 34 MA's), (34, 8154), (39, 8202), (41, 8226), (44, 8241),

Gene: Gina_19 Start: 7149, Stop: 7367, Start Num: 20

Candidate Starts for Gina_19:

(Start: 20 @7149 has 34 MA's), (24, 7179), (28, 7218),

Gene: Hendrix_49 Start: 22783, Stop: 23025, Start Num: 19

Candidate Starts for Hendrix_49:

(Start: 19 @22783 has 3 MA's), (Start: 20 @22786 has 34 MA's), (22, 22795), (35, 22894), (36, 22903), (47, 23014),

Gene: Hermeonysus_18 Start: 7858, Stop: 8133, Start Num: 20

Candidate Starts for Hermeonysus_18:

(11, 7675), (Start: 20 @7858 has 34 MA's), (23, 7870), (30, 7945), (37, 8008), (39, 8068), (45, 8125),

Gene: Honeyfin_20 Start: 8201, Stop: 8422, Start Num: 20

Candidate Starts for Honeyfin_20:

(2, 7880), (10, 8012), (12, 8018), (Start: 20 @8201 has 34 MA's), (34, 8309), (39, 8357), (45, 8414),

Gene: Jayden_18 Start: 7649, Stop: 7807, Start Num: 20

Candidate Starts for Jayden_18:

(Start: 20 @7649 has 34 MA's),

Gene: KaiHaiDragon_19 Start: 7898, Stop: 8110, Start Num: 20

Candidate Starts for KaiHaiDragon_19:

(12, 7715), (Start: 20 @7898 has 34 MA's), (34, 8006), (39, 8054), (41, 8078), (44, 8093),

Gene: Kowalski_18 Start: 8020, Stop: 8241, Start Num: 20

Candidate Starts for Kowalski_18:

(2, 7699), (10, 7831), (12, 7837), (Start: 20 @8020 has 34 MA's), (34, 8128), (39, 8176), (45, 8233),

Gene: Leaf_51 Start: 22338, Stop: 22601, Start Num: 19

Candidate Starts for Leaf_51:

(7, 22068), (13, 22215), (14, 22236), (15, 22260), (16, 22293), (Start: 19 @22338 has 3 MA's), (Start: 20 @22341 has 34 MA's), (21, 22347), (25, 22377), (32, 22440),

Gene: LittleFortune_20 Start: 8243, Stop: 8464, Start Num: 20

Candidate Starts for LittleFortune_20:
(2, 7922), (10, 8054), (12, 8060), (Start: 20 @8243 has 34 MA's), (34, 8351), (39, 8399), (45, 8456),

Gene: MisoSoup_10 Start: 4024, Stop: 4248, Start Num: 20
Candidate Starts for MisoSoup_10:
(18, 4021), (Start: 20 @4024 has 34 MA's), (26, 4066), (44, 4222),

Gene: NoodlelyBoi_18 Start: 8086, Stop: 8250, Start Num: 20
Candidate Starts for NoodlelyBoi_18:
(12, 7903), (Start: 20 @8086 has 34 MA's), (45, 8242),

Gene: Onika_18 Start: 7993, Stop: 8214, Start Num: 20
Candidate Starts for Onika_18:
(12, 7810), (Start: 20 @7993 has 34 MA's), (34, 8101), (39, 8149), (45, 8206),

Gene: PhedwardCullen_18 Start: 7762, Stop: 7974, Start Num: 20
Candidate Starts for PhedwardCullen_18:
(12, 7579), (Start: 20 @7762 has 34 MA's), (34, 7870), (39, 7918), (41, 7942), (44, 7957),

Gene: Phorgeous_18 Start: 7837, Stop: 8058, Start Num: 20
Candidate Starts for Phorgeous_18:
(2, 7516), (10, 7648), (12, 7654), (Start: 20 @7837 has 34 MA's), (34, 7945), (39, 7993), (45, 8050),

Gene: Phrancesco_20 Start: 8116, Stop: 8337, Start Num: 20
Candidate Starts for Phrancesco_20:
(12, 7933), (Start: 20 @8116 has 34 MA's), (34, 8224), (39, 8272), (45, 8329),

Gene: Piperis_19 Start: 7992, Stop: 8213, Start Num: 20
Candidate Starts for Piperis_19:
(2, 7671), (10, 7803), (12, 7809), (Start: 20 @7992 has 34 MA's), (34, 8100), (39, 8148), (45, 8205),

Gene: Pulchra_20 Start: 8394, Stop: 8606, Start Num: 20
Candidate Starts for Pulchra_20:
(2, 8073), (10, 8205), (12, 8211), (Start: 20 @8394 has 34 MA's), (34, 8502), (39, 8550), (41, 8574),
(44, 8589),

Gene: Quhwah_21 Start: 8340, Stop: 8552, Start Num: 20
Candidate Starts for Quhwah_21:
(1, 7971), (5, 8046), (8, 8121), (Start: 20 @8340 has 34 MA's), (34, 8448), (39, 8496), (41, 8520), (44,
8535),

Gene: Ramiel05_18 Start: 8020, Stop: 8241, Start Num: 20
Candidate Starts for Ramiel05_18:
(2, 7699), (10, 7831), (12, 7837), (Start: 20 @8020 has 34 MA's), (34, 8128), (39, 8176), (45, 8233),

Gene: Rasputia_47 Start: 22402, Stop: 22557, Start Num: 27
Candidate Starts for Rasputia_47:
(Start: 27 @22402 has 1 MA's), (42, 22516), (47, 22546),

Gene: RobsFeet_20 Start: 7731, Stop: 7973, Start Num: 17
Candidate Starts for RobsFeet_20:
(Start: 17 @7731 has 1 MA's), (Start: 20 @7743 has 34 MA's), (28, 7812), (29, 7818), (30, 7830), (38,
7860), (39, 7908), (45, 7965),

Gene: Rockwell_18 Start: 8020, Stop: 8241, Start Num: 20

Candidate Starts for Rockwell_18:

(2, 7699), (10, 7831), (12, 7837), (Start: 20 @8020 has 34 MA's), (34, 8128), (39, 8176), (45, 8233),

Gene: Savannah_18 Start: 8044, Stop: 8265, Start Num: 20

Candidate Starts for Savannah_18:

(2, 7723), (10, 7855), (12, 7861), (Start: 20 @8044 has 34 MA's), (34, 8152), (39, 8200), (45, 8257),

Gene: Scumberland_20 Start: 8210, Stop: 8431, Start Num: 20

Candidate Starts for Scumberland_20:

(2, 7889), (10, 8021), (12, 8027), (Start: 20 @8210 has 34 MA's), (34, 8318), (39, 8366), (45, 8423),

Gene: Selwyn23_20 Start: 8222, Stop: 8434, Start Num: 20

Candidate Starts for Selwyn23_20:

(2, 7901), (10, 8033), (12, 8039), (Start: 20 @8222 has 34 MA's), (34, 8330), (39, 8378), (41, 8402),
(44, 8417),

Gene: Shotgun_18 Start: 7842, Stop: 8063, Start Num: 20

Candidate Starts for Shotgun_18:

(12, 7659), (Start: 20 @7842 has 34 MA's), (34, 7950), (39, 7998), (45, 8055),

Gene: SirFrank_18 Start: 7933, Stop: 8097, Start Num: 20

Candidate Starts for SirFrank_18:

(12, 7750), (Start: 20 @7933 has 34 MA's), (45, 8089),

Gene: Teamocil_19 Start: 7149, Stop: 7367, Start Num: 20

Candidate Starts for Teamocil_19:

(Start: 20 @7149 has 34 MA's), (24, 7179), (28, 7218),

Gene: Tyrumbra_17 Start: 6974, Stop: 7195, Start Num: 20

Candidate Starts for Tyrumbra_17:

(2, 6635), (5, 6662), (10, 6785), (12, 6791), (Start: 20 @6974 has 34 MA's), (33, 7079), (39, 7127),

Gene: Yeti_19 Start: 7992, Stop: 8213, Start Num: 20

Candidate Starts for Yeti_19:

(2, 7671), (10, 7803), (12, 7809), (Start: 20 @7992 has 34 MA's), (34, 8100), (39, 8148), (45, 8205),

Gene: Zapato_15 Start: 7116, Stop: 7274, Start Num: 20

Candidate Starts for Zapato_15:

(Start: 20 @7116 has 34 MA's), (39, 7260),