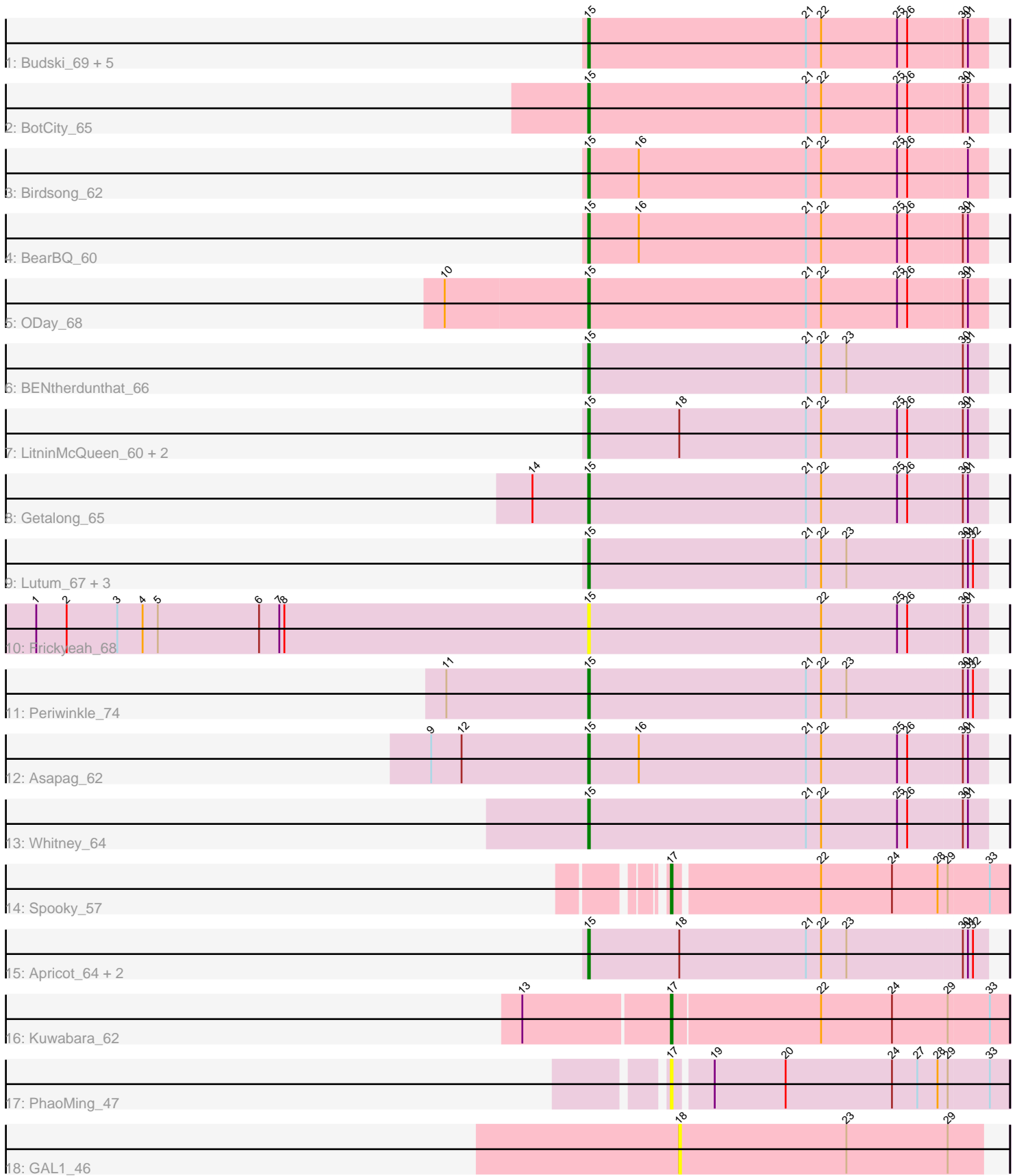


Pham 300269



Note: Tracks are now grouped by subcluster and scaled. Switching in subcluster is indicated by changes in track color. Track scale is now set by default to display the region 30 bp upstream of start 1 to 30 bp downstream of the last possible start. If this default region is judged to be packed too tightly with annotated starts, the track will be further scaled to only show that region of the ORF with annotated starts. This action will be indicated by adding "Zoomed" to the title. For starts, yellow indicates the location of called starts comprised solely of Glimmer/GeneMark auto-annotations, green indicates the location of called starts with at least 1 manual gene annotation.

Pham 300269 Report

This analysis was run 06/08/26 on database version 649.

Pham number 300269 has 30 members, 4 are drafts.

Phages represented in each track:

- Track 1 : Budski_69, Horus_63, Phistory_63, MortyNRick_58, Phabuloso_64, Holliday_66
- Track 2 : BotCity_65
- Track 3 : Birdsong_62
- Track 4 : BearBQ_60
- Track 5 : ODay_68
- Track 6 : BENtherdunthat_66
- Track 7 : LitninMcQueen_60, Squiddly_62, Kamaru_61
- Track 8 : Getalong_65
- Track 9 : Lutum_67, Ecliptus_65, Kenna_62, ShawBrad_69
- Track 10 : Frickyeah_68
- Track 11 : Periwinkle_74
- Track 12 : Asapag_62
- Track 13 : Whitney_64
- Track 14 : Spooky_57
- Track 15 : Apricot_64, Crater_64, Leroy_64
- Track 16 : Kuwabara_62
- Track 17 : PhaoMing_47
- Track 18 : GAL1_46

Summary of Final Annotations (See graph section above for start numbers):

The start number called the most often in the published annotations is 15, it was called in 24 of the 26 non-draft genes in the pham.

Genes that call this "Most Annotated" start:

- Apricot_64, Asapag_62, BENtherdunthat_66, BearBQ_60, Birdsong_62, BotCity_65, Budski_69, Crater_64, Ecliptus_65, Frickyeah_68, Getalong_65, Holliday_66, Horus_63, Kamaru_61, Kenna_62, Leroy_64, LitninMcQueen_60, Lutum_67, MortyNRick_58, ODay_68, Periwinkle_74, Phabuloso_64, Phistory_63, ShawBrad_69, Squiddly_62, Whitney_64,

Genes that have the "Most Annotated" start but do not call it:

-

Genes that do not have the "Most Annotated" start:

- GAL1_46, Kuwabara_62, PhaoMing_47, Spooky_57,

Summary by start number:

Start 15:

- Found in 26 of 30 (86.7%) of genes in pham
- Manual Annotations of this start: 24 of 26
- Called 100.0% of time when present
- Phage (with cluster) where this start called: Apricot_64 (DN3), Asapag_62 (DN1), BENTherdunthat_66 (DN1), BearBQ_60 (DN), Birdsong_62 (DN), BotCity_65 (DN), Budski_69 (DN), Crater_64 (DN3), Ecliptus_65 (DN), Frickyeah_68 (DN1), Getalong_65 (DN1), Holliday_66 (DN1), Horus_63 (DN1), Kamaru_61 (DN1), Kenna_62 (DN1), Leroy_64 (DN1), LitninMcQueen_60 (DN1), Lutum_67 (DN1), MortyNRick_58 (DN), ODay_68 (DN), Periwinkle_74 (DN1), Phabuloso_64 (DN1), Phistory_63 (DN1), ShawBrad_69 (DN1), Squiddly_62 (DN2), Whitney_64 (DN1),

Start 17:

- Found in 3 of 30 (10.0%) of genes in pham
- Manual Annotations of this start: 2 of 26
- Called 100.0% of time when present
- Phage (with cluster) where this start called: Kuwabara_62 (DN4), PhaoMing_47 (UNK), Spooky_57 (DN2),

Start 18:

- Found in 7 of 30 (23.3%) of genes in pham
- No Manual Annotations of this start.
- Called 14.3% of time when present
- Phage (with cluster) where this start called: GAL1_46 (singleton),

Summary by clusters:

There are 7 clusters represented in this pham: DN, singleton, DN4, DN1, DN3, DN2, UNK,

Info for manual annotations of cluster DN:

- Start number 15 was manually annotated 7 times for cluster DN.

Info for manual annotations of cluster DN1:

- Start number 15 was manually annotated 14 times for cluster DN1.

Info for manual annotations of cluster DN2:

- Start number 15 was manually annotated 1 time for cluster DN2.
- Start number 17 was manually annotated 1 time for cluster DN2.

Info for manual annotations of cluster DN3:

- Start number 15 was manually annotated 2 times for cluster DN3.

Info for manual annotations of cluster DN4:

- Start number 17 was manually annotated 1 time for cluster DN4.

Gene Information:

Gene: Apricot_64 Start: 39325, Stop: 39558, Start Num: 15

Candidate Starts for Apricot_64:

(Start: 15 @39325 has 24 MA's), (18, 39379), (21, 39454), (22, 39463), (23, 39478), (30, 39544), (31, 39547), (32, 39550),

Gene: Asapag_62 Start: 38801, Stop: 39034, Start Num: 15

Candidate Starts for Asapag_62:

(9, 38708), (12, 38726), (Start: 15 @38801 has 24 MA's), (16, 38831), (21, 38930), (22, 38939), (25, 38984), (26, 38990), (30, 39020), (31, 39023),

Gene: BENtherdunthat_66 Start: 40285, Stop: 40518, Start Num: 15

Candidate Starts for BENtherdunthat_66:

(Start: 15 @40285 has 24 MA's), (21, 40414), (22, 40423), (23, 40438), (30, 40504), (31, 40507),

Gene: BearBQ_60 Start: 40529, Stop: 40762, Start Num: 15

Candidate Starts for BearBQ_60:

(Start: 15 @40529 has 24 MA's), (16, 40559), (21, 40658), (22, 40667), (25, 40712), (26, 40718), (30, 40748), (31, 40751),

Gene: Birdsong_62 Start: 39196, Stop: 39429, Start Num: 15

Candidate Starts for Birdsong_62:

(Start: 15 @39196 has 24 MA's), (16, 39226), (21, 39325), (22, 39334), (25, 39379), (26, 39385), (31, 39418),

Gene: BotCity_65 Start: 40477, Stop: 40710, Start Num: 15

Candidate Starts for BotCity_65:

(Start: 15 @40477 has 24 MA's), (21, 40606), (22, 40615), (25, 40660), (26, 40666), (30, 40696), (31, 40699),

Gene: Budski_69 Start: 41317, Stop: 41550, Start Num: 15

Candidate Starts for Budski_69:

(Start: 15 @41317 has 24 MA's), (21, 41446), (22, 41455), (25, 41500), (26, 41506), (30, 41536), (31, 41539),

Gene: Crater_64 Start: 39720, Stop: 39953, Start Num: 15

Candidate Starts for Crater_64:

(Start: 15 @39720 has 24 MA's), (18, 39774), (21, 39849), (22, 39858), (23, 39873), (30, 39939), (31, 39942), (32, 39945),

Gene: Ecliptus_65 Start: 41517, Stop: 41750, Start Num: 15

Candidate Starts for Ecliptus_65:

(Start: 15 @41517 has 24 MA's), (21, 41646), (22, 41655), (23, 41670), (30, 41736), (31, 41739), (32, 41742),

Gene: Frickyeah_68 Start: 39812, Stop: 40045, Start Num: 15

Candidate Starts for Frickyeah_68:

(1, 39485), (2, 39503), (3, 39533), (4, 39548), (5, 39557), (6, 39617), (7, 39629), (8, 39632), (Start: 15 @39812 has 24 MA's), (22, 39950), (25, 39995), (26, 40001), (30, 40031), (31, 40034),

Gene: GAL1_46 Start: 34604, Stop: 34783, Start Num: 18

Candidate Starts for GAL1_46:

(18, 34604), (23, 34703), (29, 34763),

Gene: Getalong_65 Start: 41179, Stop: 41412, Start Num: 15

Candidate Starts for Getalong_65:

(14, 41146), (Start: 15 @41179 has 24 MA's), (21, 41308), (22, 41317), (25, 41362), (26, 41368), (30, 41398), (31, 41401),

Gene: Holliday_66 Start: 41153, Stop: 41386, Start Num: 15

Candidate Starts for Holliday_66:

(Start: 15 @41153 has 24 MA's), (21, 41282), (22, 41291), (25, 41336), (26, 41342), (30, 41372), (31, 41375),

Gene: Horus_63 Start: 40387, Stop: 40620, Start Num: 15

Candidate Starts for Horus_63:

(Start: 15 @40387 has 24 MA's), (21, 40516), (22, 40525), (25, 40570), (26, 40576), (30, 40606), (31, 40609),

Gene: Kamaru_61 Start: 39381, Stop: 39614, Start Num: 15

Candidate Starts for Kamaru_61:

(Start: 15 @39381 has 24 MA's), (18, 39435), (21, 39510), (22, 39519), (25, 39564), (26, 39570), (30, 39600), (31, 39603),

Gene: Kenna_62 Start: 39350, Stop: 39583, Start Num: 15

Candidate Starts for Kenna_62:

(Start: 15 @39350 has 24 MA's), (21, 39479), (22, 39488), (23, 39503), (30, 39569), (31, 39572), (32, 39575),

Gene: Kuwabara_62 Start: 40677, Stop: 40874, Start Num: 17

Candidate Starts for Kuwabara_62:

(13, 40593), (Start: 17 @40677 has 2 MA's), (22, 40764), (24, 40806), (29, 40839), (33, 40863),

Gene: Leroy_64 Start: 39656, Stop: 39889, Start Num: 15

Candidate Starts for Leroy_64:

(Start: 15 @39656 has 24 MA's), (18, 39710), (21, 39785), (22, 39794), (23, 39809), (30, 39875), (31, 39878), (32, 39881),

Gene: LitninMcQueen_60 Start: 39128, Stop: 39361, Start Num: 15

Candidate Starts for LitninMcQueen_60:

(Start: 15 @39128 has 24 MA's), (18, 39182), (21, 39257), (22, 39266), (25, 39311), (26, 39317), (30, 39347), (31, 39350),

Gene: Lutum_67 Start: 40514, Stop: 40747, Start Num: 15

Candidate Starts for Lutum_67:

(Start: 15 @40514 has 24 MA's), (21, 40643), (22, 40652), (23, 40667), (30, 40733), (31, 40736), (32, 40739),

Gene: MortyNRick_58 Start: 40558, Stop: 40791, Start Num: 15

Candidate Starts for MortyNRick_58:

(Start: 15 @40558 has 24 MA's), (21, 40687), (22, 40696), (25, 40741), (26, 40747), (30, 40777), (31, 40780),

Gene: ODay_68 Start: 41458, Stop: 41691, Start Num: 15

Candidate Starts for ODay_68:

(10, 41374), (Start: 15 @41458 has 24 MA's), (21, 41587), (22, 41596), (25, 41641), (26, 41647), (30, 41677), (31, 41680),

Gene: Periwinkle_74 Start: 42820, Stop: 43053, Start Num: 15

Candidate Starts for Periwinkle_74:

(11, 42736), (Start: 15 @42820 has 24 MA's), (21, 42949), (22, 42958), (23, 42973), (30, 43039), (31, 43042), (32, 43045),

Gene: Phabuloso_64 Start: 39559, Stop: 39792, Start Num: 15

Candidate Starts for Phabuloso_64:

(Start: 15 @39559 has 24 MA's), (21, 39688), (22, 39697), (25, 39742), (26, 39748), (30, 39778), (31, 39781),

Gene: PhaoMing_47 Start: 35899, Stop: 36093, Start Num: 17

Candidate Starts for PhaoMing_47:

(Start: 17 @35899 has 2 MA's), (19, 35920), (20, 35962), (24, 36025), (27, 36040), (28, 36052), (29, 36058), (33, 36082),

Gene: Phistory_63 Start: 38885, Stop: 39118, Start Num: 15

Candidate Starts for Phistory_63:

(Start: 15 @38885 has 24 MA's), (21, 39014), (22, 39023), (25, 39068), (26, 39074), (30, 39104), (31, 39107),

Gene: ShawBrad_69 Start: 39976, Stop: 40209, Start Num: 15

Candidate Starts for ShawBrad_69:

(Start: 15 @39976 has 24 MA's), (21, 40105), (22, 40114), (23, 40129), (30, 40195), (31, 40198), (32, 40201),

Gene: Spooky_57 Start: 38296, Stop: 38490, Start Num: 17

Candidate Starts for Spooky_57:

(Start: 17 @38296 has 2 MA's), (22, 38380), (24, 38422), (28, 38449), (29, 38455), (33, 38479),

Gene: Squiddly_62 Start: 40715, Stop: 40948, Start Num: 15

Candidate Starts for Squiddly_62:

(Start: 15 @40715 has 24 MA's), (18, 40769), (21, 40844), (22, 40853), (25, 40898), (26, 40904), (30, 40934), (31, 40937),

Gene: Whitney_64 Start: 41230, Stop: 41463, Start Num: 15

Candidate Starts for Whitney_64:

(Start: 15 @41230 has 24 MA's), (21, 41359), (22, 41368), (25, 41413), (26, 41419), (30, 41449), (31, 41452),