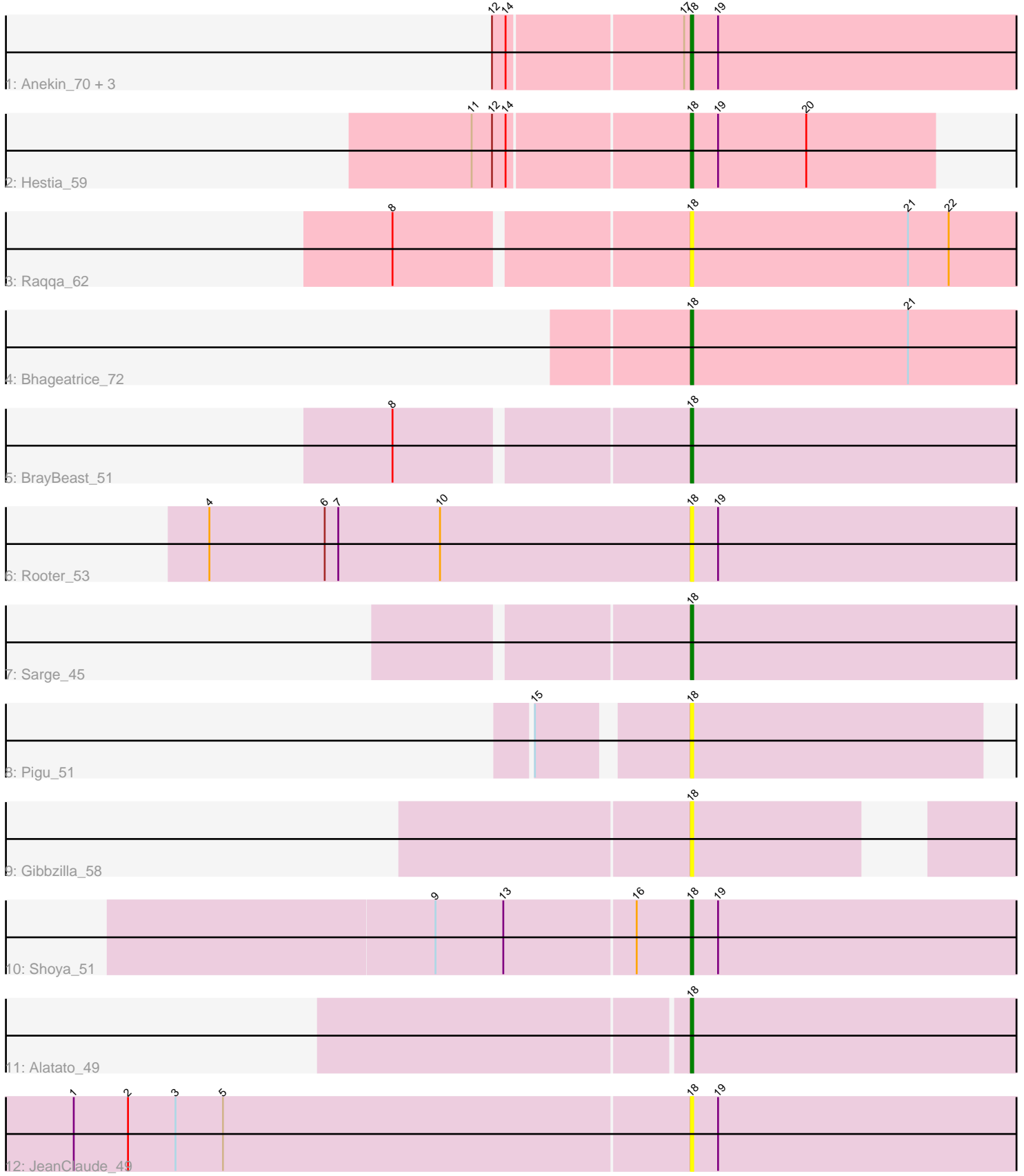


Pham 300423



Note: Tracks are now grouped by subcluster and scaled. Switching in subcluster is indicated by changes in track color. Track scale is now set by default to display the region 30 bp upstream of start 1 to 30 bp downstream of the last possible start. If this default region is judged to be packed too tightly with annotated starts, the track will be further scaled to only show that region of the ORF with annotated starts. This action will be indicated by adding "Zoomed" to the title. For starts, yellow indicates the location of called starts comprised solely of Glimmer/GeneMark auto-annotations, green indicates the location of called starts with at least 1 manual gene annotation.

Pham 300423 Report

This analysis was run 06/08/26 on database version 649.

Pham number 300423 has 15 members, 7 are drafts.

Phages represented in each track:

- Track 1 : Anekin_70, BlueShadow_66, CosmicBrownie_63, Nyilah_69
- Track 2 : Hestia_59
- Track 3 : Raqqa_62
- Track 4 : Bhageatrice_72
- Track 5 : BrayBeast_51
- Track 6 : Rooter_53
- Track 7 : Sarge_45
- Track 8 : Pigu_51
- Track 9 : Gibbzilla_58
- Track 10 : Shoya_51
- Track 11 : Alatato_49
- Track 12 : JeanClaude_49

Summary of Final Annotations (See graph section above for start numbers):

The start number called the most often in the published annotations is 18, it was called in 8 of the 8 non-draft genes in the pham.

Genes that call this "Most Annotated" start:

- Alatato_49, Anekin_70, Bhageatrice_72, BlueShadow_66, BrayBeast_51, CosmicBrownie_63, Gibbzilla_58, Hestia_59, JeanClaude_49, Nyilah_69, Pigu_51, Raqqa_62, Rooter_53, Sarge_45, Shoya_51,

Genes that have the "Most Annotated" start but do not call it:

-

Genes that do not have the "Most Annotated" start:

-

Summary by start number:

Start 18:

- Found in 15 of 15 (100.0%) of genes in pham
- Manual Annotations of this start: 8 of 8

- Called 100.0% of time when present
- Phage (with cluster) where this start called: Alatato_49 (FB), Anekin_70 (AY), Bhageatrice_72 (AY), BlueShadow_66 (AY), BrayBeast_51 (FB), CosmicBrownie_63 (AY), Gibbzilla_58 (FB), Hestia_59 (AY), JeanClaude_49 (FB), Nyilah_69 (AY), Pigu_51 (FB), Raqqa_62 (AY), Rooter_53 (FB), Sarge_45 (FB), Shoya_51 (FB),

Summary by clusters:

There are 2 clusters represented in this pham: AY, FB,

Info for manual annotations of cluster AY:

- Start number 18 was manually annotated 4 times for cluster AY.

Info for manual annotations of cluster FB:

- Start number 18 was manually annotated 4 times for cluster FB.

Gene Information:

Gene: Alatato_49 Start: 29606, Stop: 29755, Start Num: 18

Candidate Starts for Alatato_49:

(Start: 18 @29606 has 8 MA's),

Gene: Anekin_70 Start: 36609, Stop: 36758, Start Num: 18

Candidate Starts for Anekin_70:

(12, 36525), (14, 36531), (17, 36606), (Start: 18 @36609 has 8 MA's), (19, 36621),

Gene: Bhageatrice_72 Start: 38560, Stop: 38709, Start Num: 18

Candidate Starts for Bhageatrice_72:

(Start: 18 @38560 has 8 MA's), (21, 38656),

Gene: BlueShadow_66 Start: 35620, Stop: 35769, Start Num: 18

Candidate Starts for BlueShadow_66:

(12, 35536), (14, 35542), (17, 35617), (Start: 18 @35620 has 8 MA's), (19, 35632),

Gene: BrayBeast_51 Start: 29661, Stop: 29810, Start Num: 18

Candidate Starts for BrayBeast_51:

(8, 29538), (Start: 18 @29661 has 8 MA's),

Gene: CosmicBrownie_63 Start: 34343, Stop: 34492, Start Num: 18

Candidate Starts for CosmicBrownie_63:

(12, 34259), (14, 34265), (17, 34340), (Start: 18 @34343 has 8 MA's), (19, 34355),

Gene: Gibbzilla_58 Start: 30990, Stop: 31109, Start Num: 18

Candidate Starts for Gibbzilla_58:

(Start: 18 @30990 has 8 MA's),

Gene: Hestia_59 Start: 33177, Stop: 33284, Start Num: 18

Candidate Starts for Hestia_59:

(11, 33084), (12, 33093), (14, 33099), (Start: 18 @33177 has 8 MA's), (19, 33189), (20, 33228),

Gene: JeanClaude_49 Start: 27759, Stop: 27908, Start Num: 18

Candidate Starts for JeanClaude_49:
(1, 27489), (2, 27513), (3, 27534), (5, 27555), (Start: 18 @27759 has 8 MA's), (19, 27771),

Gene: Nyilah_69 Start: 34800, Stop: 34949, Start Num: 18
Candidate Starts for Nyilah_69:
(12, 34716), (14, 34722), (17, 34797), (Start: 18 @34800 has 8 MA's), (19, 34812),

Gene: Pigu_51 Start: 28594, Stop: 28722, Start Num: 18
Candidate Starts for Pigu_51:
(15, 28534), (Start: 18 @28594 has 8 MA's),

Gene: Raqqa_62 Start: 33690, Stop: 33839, Start Num: 18
Candidate Starts for Raqqa_62:
(8, 33567), (Start: 18 @33690 has 8 MA's), (21, 33786), (22, 33804),

Gene: Rooter_53 Start: 29651, Stop: 29800, Start Num: 18
Candidate Starts for Rooter_53:
(4, 29438), (6, 29489), (7, 29495), (10, 29540), (Start: 18 @29651 has 8 MA's), (19, 29663),

Gene: Sarge_45 Start: 27408, Stop: 27557, Start Num: 18
Candidate Starts for Sarge_45:
(Start: 18 @27408 has 8 MA's),

Gene: Shoya_51 Start: 29581, Stop: 29730, Start Num: 18
Candidate Starts for Shoya_51:
(9, 29470), (13, 29500), (16, 29557), (Start: 18 @29581 has 8 MA's), (19, 29593),