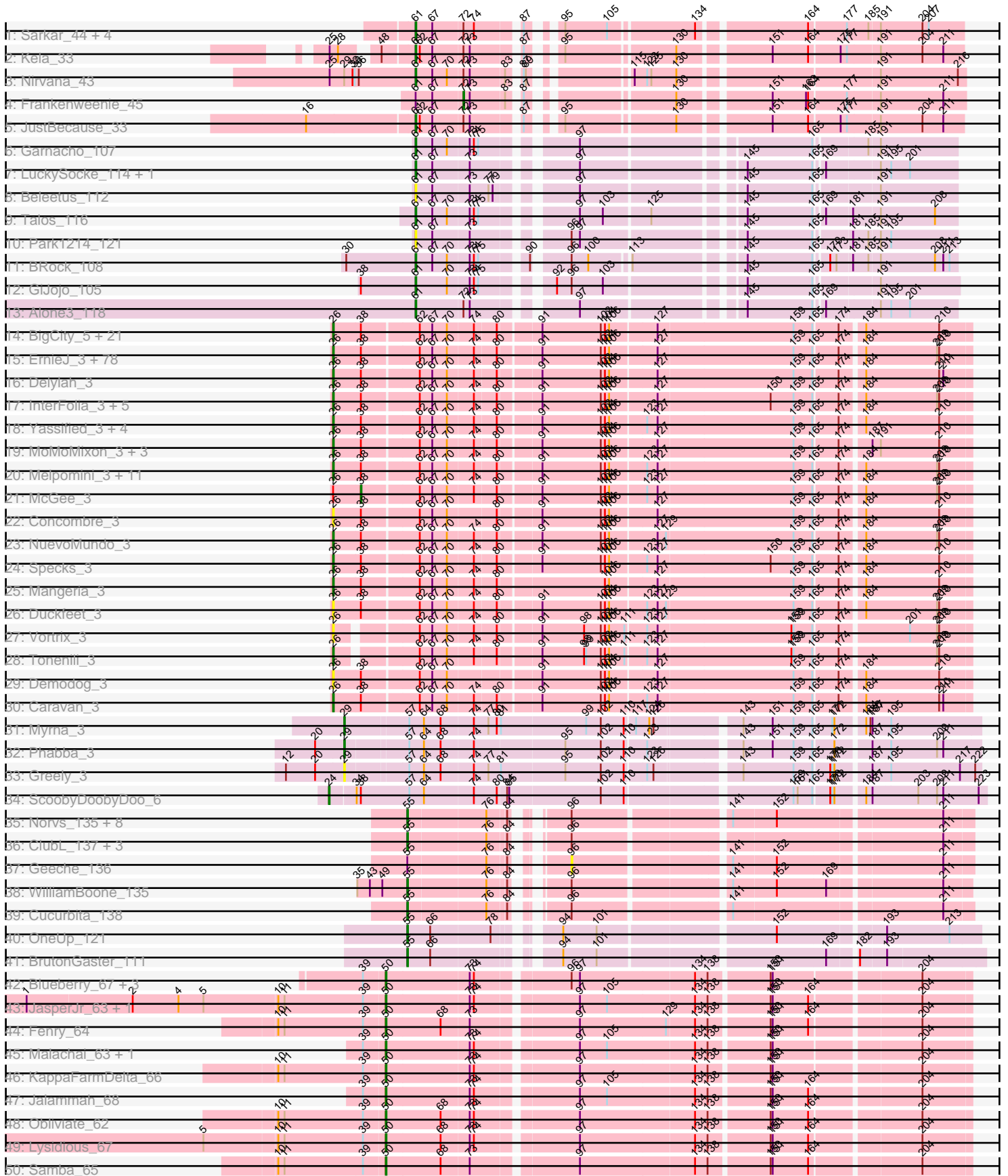
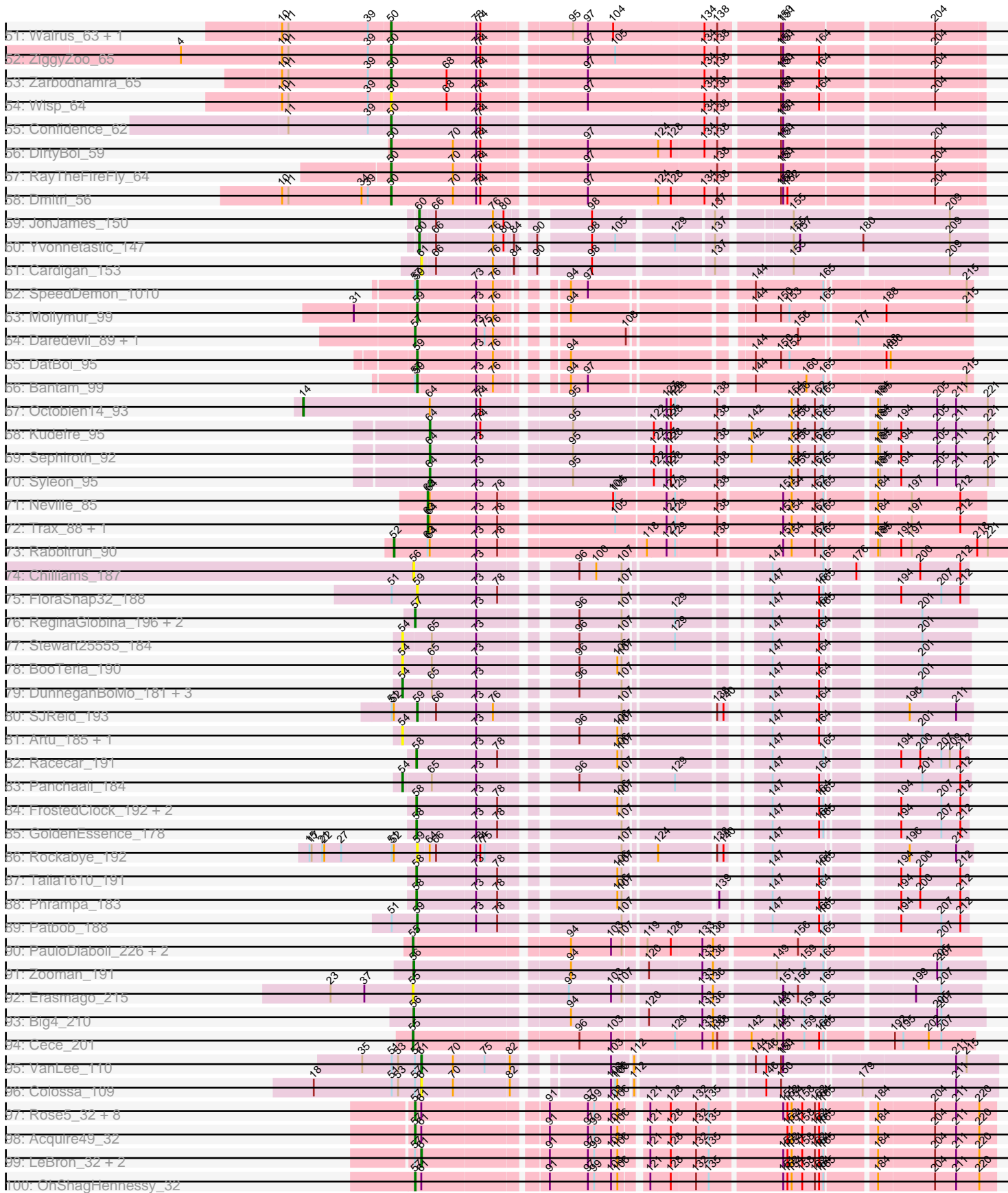


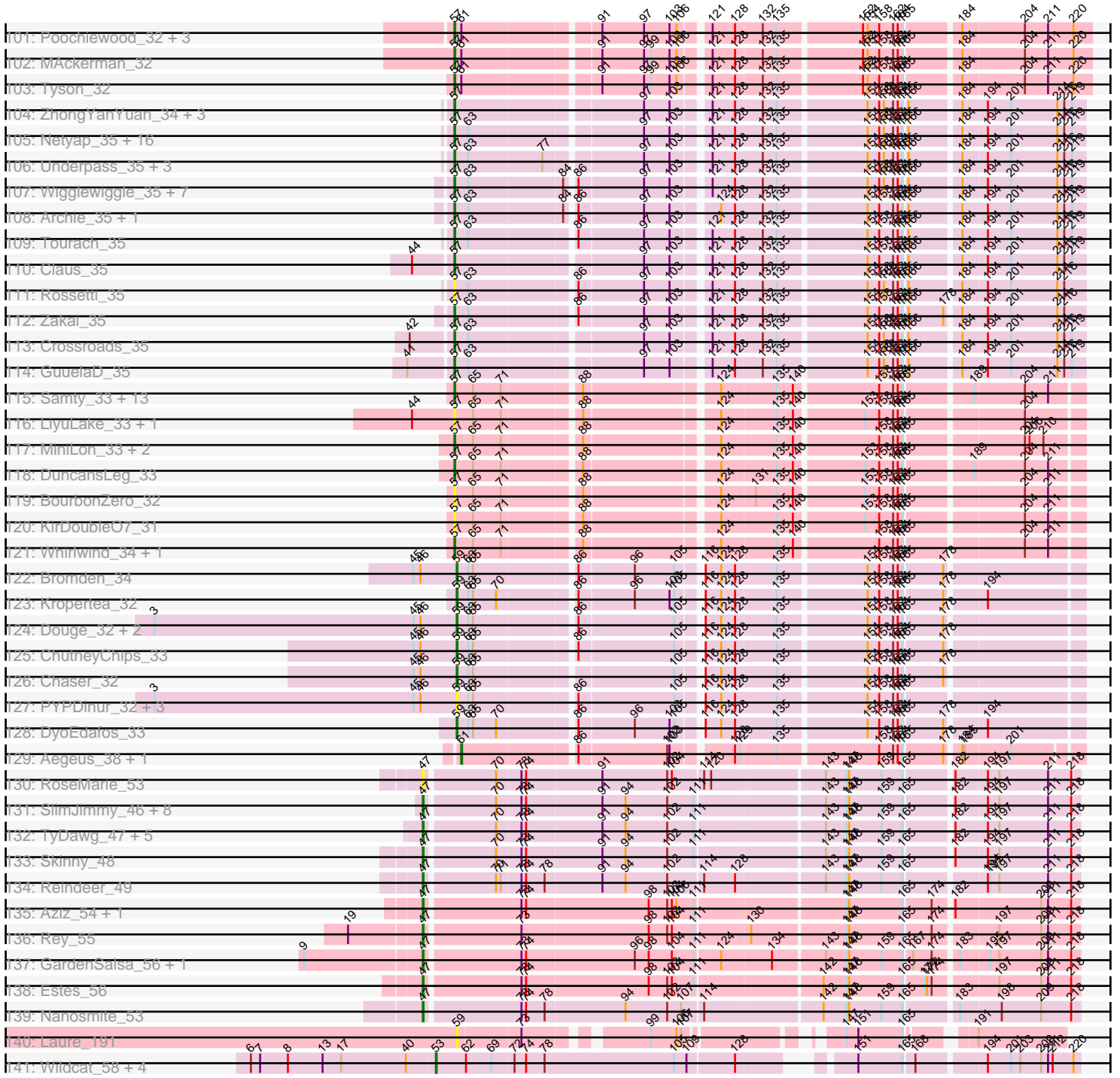
Pham 300973



Pham 300973



Pham 300973



Note: Tracks are now grouped by subcluster and scaled. Switching in subcluster is indicated by changes in track color. Track scale is now set by default to display the region 30 bp upstream of start 1 to 30 bp downstream of the last possible start. If this default region is judged to be packed too tightly with annotated starts, the track will be further scaled to only show that region of the ORF with annotated starts. This action will be indicated by adding "Zoomed" to the title. For starts, yellow indicates the location of called starts comprised solely of Glimmer/GeneMark auto-annotations, green indicates the location of called starts with at least 1 manual gene annotation.

Pham 300973 Report

This analysis was run 06/08/26 on database version 649.

Pham number 300973 has 382 members, 77 are drafts.

Phages represented in each track:

- Track 1 : Sarkar_44, Quantum_41, Kradal_42, Satis_42, EhyElimayoE_42
- Track 2 : Kela_33
- Track 3 : Nirvana_43
- Track 4 : Frankenweenie_45
- Track 5 : JustBecause_33
- Track 6 : Garnacho_107
- Track 7 : LuckySocke_114, Fudan_112
- Track 8 : Beleetus_112
- Track 9 : Talos_116
- Track 10 : Park1214_121
- Track 11 : BRock_108
- Track 12 : GiJojo_105
- Track 13 : Alone3_118
- Track 14 : BigCity_5, CharlieB_3, LookingGlass_3, Grasshills_5, Rocha_3, Bigswole_3, I3_3, EggyFarm_5, Lunareta_3, Lethe_3, Maturis_3, Dandelion_2, JulietS_3, Nappy_3, NoodleTree_3, Astraea_3, JayJay_3, Moby_3, StephanieG_3, Moiqah_3, Grungle_3, Montpel_3
- Track 15 : ErnieJ_3, Trinitium_3, Teardrop_3, Janiyra_3, Wally_3, YoungMoneyMata_3, Chargie21_3, Rizal_3, Latch_3, Essence_3, Kboogie_3, Matsumoto_3, Babyland_3, Ading_3, Tainan_3, Flabslab_3, Derek_3, Turret_3, Napoleon13_3, Jezreel_3, Jaygup_3, Pio_3, Ngannou_3, Substance289_3, Gamgam_3, DTDevon_3, Chomp_3, CindyLou_3, Momo_3, ChaylaJr_3, Bangla1971_3, ShiaLabeouf_3, EmmaElysia_3, Pier_3, Dessert_3, Ghost_3, Shnickers_3, Labradorite_3, Breeniome_3, Jedediah_3, Kamryn_3, Ablatia_3, BackyardAgain_3, Phusco_3, Naija_3, Jemmno_3, Belieber_3, ChickenPhender_3, ArcherS7_3, Tortoise16_2, Dietrick_3, Fixie_3, Patter_3, Audrick_3, Fludd_3, Tyke_3, GlutenPhree_3, StubbySaigey_3, Drazdys_3, Spud_3, Cactojaque_2, Morizzled23_3, Spec_3, ValleyTerrace_3, Guwapp_3, Phlegm_3, InigoMontoya_3, Rahel_3, Gabriel_3, Amataga_3, LifeSavor_3, JPickles_3, Adlitam_3, Basquiat_3, Atlantean_3, BobaPhatt_3, Pivoine_3, SmallFry_3, SilverDipper_3
- Track 16 : Delylah_3
- Track 17 : InterFolia_3, FrayBell_3, LordLeafolot_3, LolaVinca_3, PharkleMinkus_3, Pupusa_3
- Track 18 : Yassified_3, Halldule_3, Blackdragon_3, Bxz1_3, DeejaClivia_3
- Track 19 : MoMoMixon_3, Nidhogg_3, JigglyPuff_3, Naval22_3
- Track 20 : Melpomini_3, Shaqnato_3, ScottMcG_3, BadAgartude_3, Koguma_3, Littleton_3, Ronan_3, Sprinklers_3, Sauce_3, Catera_3, Blackbrain_3, EasyJones_3

- Track 21 : McGee_3
- Track 22 : Concombre_3
- Track 23 : NuevoMundo_3
- Track 24 : Specks_3
- Track 25 : Mangeria_3
- Track 26 : Duckfeet_3
- Track 27 : Vortrix_3
- Track 28 : Tonenili_3
- Track 29 : Demodog_3
- Track 30 : Caravan_3
- Track 31 : Myrna_3
- Track 32 : Phabba_3
- Track 33 : Greely_3
- Track 34 : ScoobyDoobyDoo_6
- Track 35 : Norvs_135, Aphelion_136, Engineer_139, Abscondus_136, Smoothie_138, Lozinak_137, Culver_136, Bachita_140, Dusty_134
- Track 36 : ClubL_137, PhinkBoden_136, Toniann_137, Miskis_132
- Track 37 : Geeche_136
- Track 38 : WilliamBoone_135
- Track 39 : Cucurbita_138
- Track 40 : OneUp_121
- Track 41 : BrutonGaster_111
- Track 42 : Blueberry_67, Gambino_70, Azula_68, MissRona_68
- Track 43 : JasperJr_63, Guacamole_63
- Track 44 : Fenry_64
- Track 45 : Malachai_63, Begonia_63
- Track 46 : KappaFarmDelta_66
- Track 47 : Jalammah_68
- Track 48 : Obliviate_62
- Track 49 : Lysidious_67
- Track 50 : Samba_65
- Track 51 : Walrus_63, Pipp_67
- Track 52 : ZiggyZoo_65
- Track 53 : Zarbodnamra_65
- Track 54 : Wisp_64
- Track 55 : Confidence_62
- Track 56 : DirtyBoi_59
- Track 57 : RayTheFireFly_64
- Track 58 : Dmitri_56
- Track 59 : JonJames_150
- Track 60 : Yvonnetastic_147
- Track 61 : Cardigan_153
- Track 62 : SpeedDemon_1010
- Track 63 : Mollymur_99
- Track 64 : Daredevil_89, Towmatter_88
- Track 65 : DatBoi_95
- Track 66 : Bantam_99
- Track 67 : Octobien14_93
- Track 68 : Kudrefre_95
- Track 69 : Sephiroth_92
- Track 70 : Syleon_95
- Track 71 : Neville_85
- Track 72 : Trax_88, LilJank_88

- Track 73 : Rabbitrun_90
- Track 74 : Chilliams_187
- Track 75 : FloraSnap32_188
- Track 76 : ReginaGlobina_196, LeoJr_192, Atuin_183
- Track 77 : Stewart25555_184
- Track 78 : BooTeria_190
- Track 79 : DunneganBoMo_181, WaddleDee_178, Ellewin_181, Emmetator_185
- Track 80 : SJReid_193
- Track 81 : Artu_185, KSunshine22_186
- Track 82 : Racecar_191
- Track 83 : Panchaali_184
- Track 84 : FrostedClock_192, Mimi_190, Bloom_194
- Track 85 : GoldenEssence_178
- Track 86 : Rockabye_192
- Track 87 : Talia1610_191
- Track 88 : Phrampa_183
- Track 89 : Patbob_188
- Track 90 : PauloDiaboli_226, A3Wally_226, Dodo_222
- Track 91 : Zooman_191
- Track 92 : Erasmago_215
- Track 93 : Big4_210
- Track 94 : Cece_201
- Track 95 : VanLee_110
- Track 96 : Colossa_109
- Track 97 : Rose5_32, Enceladus_32, DirkDirk_32, Calm_32, CicholasNage_32, Zaria_32, Wamburggrxpress_32, Wyatt2_32, Appletree2_32
- Track 98 : Acquire49_32
- Track 99 : LeBron_32, JoeDirt_32, UPIE_32
- Track 100 : OhShagHennessy_32
- Track 101 : Poochiewood_32, Halena_32, Silverleaf_32, AvadaKedavra_32
- Track 102 : MAckerman_32
- Track 103 : Tyson_32
- Track 104 : ZhongYanYuan_34, Baoshan_34, DHan_36, DanBing_35
- Track 105 : Netyap_35, Lewan_35, Rumpelstiltskin_35, Winky_35, Vetrix_35, Miley16_35, OverPar_36, Faith1_35, Gabriela_35, DrSeegs_35, Itos_35, SoJulia_36, Loadrie_35, Breezona_35, BigCheese_35, BobsGarage_35, Finemlucis_35
- Track 106 : Underpass_35, Gardann_35, LilDestine_35, Nicholasp3_35
- Track 107 : Wigglewiggles_35, Wilder_35, Kahlid_35, Soap141_35, MkaliMitinis3_35, Hafay_35, Lynnae_35, Sarshaun_35
- Track 108 : Archie_35, Bazzle_35
- Track 109 : Tourach_35
- Track 110 : Claus_35
- Track 111 : Rossetti_35
- Track 112 : Zakai_35
- Track 113 : Crossroads_35
- Track 114 : GuuelaD_35
- Track 115 : Samty_33, Clautastrophe_33, Kingsolomon_33, Nicholas_33, TriFive_33, Lumos_33, Moostard_33, Snenia_33, Finnry_33, MsGreen_33, Jobypre_33, Red305_33, Jubie_33, Bellis_33
- Track 116 : LiyuLake_33, Ellson_33
- Track 117 : MiniLon_33, MiniMac_33, Lolly9_33
- Track 118 : DuncansLeg_33
- Track 119 : BourbonZero_32

- Track 120 : KirDoubleO7_31
- Track 121 : Whirlwind_34, Krypton555_33
- Track 122 : Bromden_34
- Track 123 : Kropertea_32
- Track 124 : Douge_32, Quby_32, FarmResident_32
- Track 125 : ChutneyChips_33
- Track 126 : Chaser_32
- Track 127 : PYPDinur_32, BrainDrainer_33, Sheng711_32, Douzhi_32
- Track 128 : DyoEdafos_33
- Track 129 : Aegeus_38, Baudelaire_38
- Track 130 : RoseMarie_53
- Track 131 : SlimJimmy_46, KleverKiS_48, Diminimus_48, Auspice_47, Dulcita_48, Glaske16_48, FreakyGoo_48, Izel_48, Bricole_47
- Track 132 : TyDawg_47, PegLeg_47, Bongo_47, LilhomieP_46, TpudiCK_49, IPhane7_47
- Track 133 : Skinny_48
- Track 134 : Reindeer_49
- Track 135 : Aziz_54, GenevaB15_54
- Track 136 : Rey_55
- Track 137 : GardenSalsa_56, MrMagoo_56
- Track 138 : Estes_56
- Track 139 : Nanosmite_53
- Track 140 : Laure_191
- Track 141 : Wildcat_58, MaryV_58, Cosmo_58, Azrael100_57, EniyanLRS_55

Summary of Final Annotations (See graph section above for start numbers):

The start number called the most often in the published annotations is 26, it was called in 109 of the 305 non-draft genes in the pham.

Genes that call this "Most Annotated" start:

- Ablatia_3, Ading_3, Adlitam_3, Amataga_3, ArcherS7_3, Astraea_3, Atlantean_3, Audrick_3, Babyland_3, BackyardAgain_3, BadAgartude_3, Bangla1971_3, Basquiat_3, Belieber_3, BigCity_5, Bigswole_3, Blackbrain_3, Blackdragon_3, BobaPhatt_3, Breeniome_3, Bxz1_3, Cactojaque_2, Caravan_3, Catera_3, Chargie21_3, CharlieB_3, ChaylaJr_3, ChickenPhender_3, Chomp_3, CindyLou_3, Concombre_3, DTDevon_3, Dandelion_2, DeejaClivia_3, Delylah_3, Demodog_3, Derek_3, Dessert_3, Dietrick_3, Drazdys_3, Duckfeet_3, EasyJones_3, EggyFarm_5, EmmaElysia_3, ErnieJ_3, Essence_3, Fixie_3, Flabslab_3, Fludd_3, FrayBell_3, Gabriel_3, Gangam_3, Ghost_3, GlutenPhree_3, Grasshills_5, Grungle_3, Guwapp_3, Halldule_3, I3_3, InigoMontoya_3, InterFolia_3, JPickles_3, Janiyra_3, JayJay_3, Jaygup_3, Jedediah_3, Jemmno_3, Jezreel_3, JigglyPuff_3, JulietS_3, Kamryn_3, Kboogie_3, Koguma_3, Labradorite_3, Latch_3, Lethe_3, LifeSavor_3, Littleton_3, LolaVinca_3, LookingGlass_3, LordLeafolot_3, Lunareta_3, Mangeria_3, Matsumoto_3, Maturis_3, Melpomini_3, MoMoMixon_3, Moby_3, Moiqah_3, Momo_3, Montpel_3, Morizzled23_3, Naija_3, Napoleon13_3, Nappy_3, Naval22_3, Ngannou_3, Nidhogg_3, NoodleTree_3, NuevoMundo_3, Patter_3, PharkleMinkus_3, Phlegm_3, Phusco_3, Pier_3, Pio_3, Pivoine_3, Pupusa_3, Rahel_3, Rizal_3, Rocha_3, Ronan_3, Sauce_3, ScottMcG_3, Shaqnato_3, ShiaLabeouf_3, Shnickers_3, SilverDipper_3, SmallFry_3, Spec_3, Specks_3, Sprinklers_3, Spud_3,

StephanieG_3, StubbySaigey_3, Substance289_3, Tainan_3, Teardrop_3, Tonenili_3, Tortoise16_2, Trinitium_3, Turret_3, Tyke_3, ValleyTerrace_3, Vortrix_3, Wally_3, Yassified_3, YoungMoneyMata_3,

Genes that have the "Most Annotated" start but do not call it:

- McGee_3,

Genes that do not have the "Most Annotated" start:

- A3Wally_226, Abscondus_136, Acquire49_32, Aegeus_38, Alone3_118, Aphelion_136, Appletree2_32, Archie_35, Artu_185, Atuin_183, Auspice_47, AvadaKedavra_32, Aziz_54, Azrael100_57, Azula_68, BRock_108, Bachita_140, Bantam_99, Baoshan_34, Baudelaire_38, Bazzle_35, Begonia_63, Beleetus_112, Bellis_33, Big4_210, BigCheese_35, Bloom_194, Blueberry_67, BobsGarage_35, Bongo_47, BooTeria_190, BourbonZero_32, BrainDrainer_33, Breezona_35, Bricole_47, Bromden_34, BrutonGaster_111, Calm_32, Cardigan_153, Cece_201, Chaser_32, Chilliams_187, ChutneyChips_33, CicholasNage_32, Claus_35, Clautastrophe_33, ClubL_137, Colossa_109, Confidence_62, Cosmo_58, Crossroads_35, Cucurbita_138, Culver_136, DHan_36, DanBing_35, Daredevil_89, DatBoi_95, Diminimus_48, DirkDirk_32, DirtyBoi_59, Dmitri_56, Dodo_222, Douge_32, Douzhi_32, DrSeegs_35, Dulcita_48, DuncansLeg_33, DunneganBoMo_181, Dusty_134, DyoEdafos_33, EhyElimayoE_42, Ellewin_181, Ellson_33, Emmetator_185, Enceladus_32, Engineer_139, EniyanLRS_55, Erasmago_215, Estes_56, Faith1_35, FarmResident_32, Fenry_64, Finemlucis_35, Finrry_33, FloraSnap32_188, Frankenweenie_45, FreakyGoo_48, FrostedClock_192, Fudan_112, Gabriela_35, Gambino_70, Gardann_35, GardenSalsa_56, Garnacho_107, Geeche_136, GenevaB15_54, GiJojo_105, Glaske16_48, GoldenEssence_178, Greely_3, Guacamole_63, GuuelaD_35, Hafay_35, Halena_32, IPhane7_47, Itos_35, Izel_48, Jalammah_68, JasperJr_63, Jobypre_33, JoeDirt_32, JonJames_150, Jubie_33, JustBecause_33, KSunshine22_186, Kahlid_35, KappaFarmDelta_66, Kela_33, Kingsolomon_33, KirDoubleO7_31, KleverKiS_48, Kradal_42, Kropertea_32, Krypton555_33, Kudrefre_95, Laure_191, LeBron_32, LeoJr_192, Lewan_35, LilDestine_35, LilJank_88, LilhomieP_46, LiyuLake_33, Loadrie_35, Lolly9_33, Lozinak_137, LuckySocke_114, Lumos_33, Lynnae_35, Lysidious_67, MAckerman_32, Malachai_63, MaryV_58, Miley16_35, Mimi_190, MiniLon_33, MiniMac_33, Miskis_132, MissRona_68, MkaliMitinis3_35, Mollymur_99, Moostard_33, MrMagoo_56, MsGreen_33, Myrna_3, Nanosmite_53, Netyap_35, Neville_85, Nicholas_33, Nicholasp3_35, Nirvana_43, Norvs_135, Oblivate_62, Octobien14_93, OhShagHennessy_32, OneUp_121, OverPar_36, PYPDinur_32, Panchaali_184, Park1214_121, Patbob_188, PauloDiaboli_226, PegLeg_47, Phabba_3, PhinkBoden_136, Phrampa_183, Pipp_67, Poochiewood_32, Quantum_41, Quby_32, Rabbitrun_90, Racecar_191, RayTheFireFly_64, Red305_33, ReginaGlobina_196, Reindeer_49, Rey_55, Rockabye_192, Rose5_32, RoseMarie_53, Rossetti_35, Rumpelstiltskin_35, SJReid_193, Samba_65, Samty_33, Sarkar_44, Sarshaun_35, Satis_42, ScoobyDoobyDoo_6, Sephiroth_92, Sheng711_32, Silverleaf_32, Skinny_48, SlimJimmy_46, Smoothie_138, Snenia_33, SoJulia_36, Soap141_35, SpeedDemon_1010, Stewart25555_184, Syleon_95, Talia1610_191, Talos_116, Toniann_137, Tourach_35, Towmatter_88, TpudiCK_49, Trax_88, TriFive_33, TyDawg_47, Tyson_32, UPIE_32, Underpass_35, VanLee_110, Vetric_35, WaddleDee_178, Walrus_63, Wamburgxpress_32, Whirlwind_34, Wigglewiggle_35, Wildcat_58, Wilder_35, WilliamBoone_135, Winky_35, Wisp_64, Wyatt2_32, Yvonnetastic_147, Zakai_35, Zarbodnamra_65, Zaria_32, ZhongYanYuan_34, ZiggyZoo_65, Zooman_191,

Summary by start number:

Start 14:

- Found in 1 of 382 (0.3%) of genes in pham
- Manual Annotations of this start: 1 of 305
- Called 100.0% of time when present
- Phage (with cluster) where this start called: Octobien14_93 (DU1),

Start 24:

- Found in 1 of 382 (0.3%) of genes in pham
- Manual Annotations of this start: 1 of 305
- Called 100.0% of time when present
- Phage (with cluster) where this start called: ScoobyDoobyDoo_6 (C2),

Start 26:

- Found in 139 of 382 (36.4%) of genes in pham
- Manual Annotations of this start: 109 of 305
- Called 99.3% of time when present
- Phage (with cluster) where this start called: Ablatia_3 (C1), Ading_3 (C1), Adlitam_3 (C1), Amataga_3 (C1), ArcherS7_3 (C1), Astraea_3 (C1), Atlantean_3 (C1), Audrick_3 (C1), Babyland_3 (C1), BackyardAgain_3 (C1), BadAgartude_3 (C1), Bangla1971_3 (C1), Basquiat_3 (C1), Belieber_3 (C1), BigCity_5 (C1), Bigswole_3 (C1), Blackbrain_3 (C1), Blackdragon_3 (C1), BobaPhatt_3 (C1), Breeniome_3 (C1), Bxz1_3 (C1), Cactojaque_2 (C1), Caravan_3 (C1), Catera_3 (C1), Chargie21_3 (C1), CharlieB_3 (C1), ChaylaJr_3 (C1), ChickenPhender_3 (C1), Chomp_3 (C1), CindyLou_3 (C1), Concombre_3 (C1), DTDevon_3 (C1), Dandelion_2 (C1), DeejaClivia_3 (C1), Delylah_3 (C1), Demodog_3 (C1), Derek_3 (C1), Dessert_3 (C1), Dietrick_3 (C1), Drazdys_3 (C1), Duckfeet_3 (C1), EasyJones_3 (C1), EggFarm_5 (C1), EmmaElysia_3 (C1), ErnieJ_3 (C1), Essence_3 (C1), Fixie_3 (C1), Flabslab_3 (C1), Fludd_3 (C1), FrayBell_3 (C1), Gabriel_3 (C1), Gamgam_3 (C1), Ghost_3 (C1), GlutenPhree_3 (C1), Grasshills_5 (C1), Grungle_3 (C1), Guwapp_3 (C1), Halldule_3 (C1), I3_3 (C1), InigoMontoya_3 (C1), InterFolia_3 (C1), JPickles_3 (C1), Janiyra_3 (C1), JayJay_3 (C1), Jaygup_3 (C1), Jedediah_3 (C1), Jemmno_3 (C1), Jezreel_3 (C1), JigglyPuff_3 (C1), JulietS_3 (C1), Kamryn_3 (C1), Kboogie_3 (C1), Koguma_3 (C1), Labradorite_3 (C1), Latch_3 (C1), Lethe_3 (C1), LifeSavor_3 (C1), Littleton_3 (C1), LolaVinca_3 (C1), LookingGlass_3 (C1), LordLeafolot_3 (C1), Lunareta_3 (C1), Mangeria_3 (C1), Matsumoto_3 (C1), Maturis_3 (C1), Melpomini_3 (C1), MoMoMixon_3 (C1), Moby_3 (C1), Moiqah_3 (C1), Momo_3 (C1), Montpel_3 (C1), Morizzled23_3 (C1), Naija_3 (C1), Napoleon13_3 (C1), Nappy_3 (C1), Naval22_3 (C1), Ngannou_3 (C1), Nidhogg_3 (C1), NoodleTree_3 (C1), NuevoMundo_3 (C1), Patter_3 (C1), PharkleMinkus_3 (C1), Phlegm_3 (C1), Phusco_3 (C1), Pier_3 (C1), Pio_3 (C1), Pivoine_3 (C1), Pupusa_3 (C1), Rahel_3 (C1), Rizal_3 (C1), Rocha_3 (C1), Ronan_3 (C1), Sauce_3 (C1), ScottMcG_3 (C1), Shaqnato_3 (C1), ShiaLabeouf_3 (C1), Shnickers_3 (C1), SilverDipper_3 (C1), SmallFry_3 (C1), Spec_3 (C1), Specks_3 (C1), Sprinklers_3 (C1), Spud_3 (C1), StephanieG_3 (C1), StubbySaigey_3 (C1), Substance289_3 (C1), Tainan_3 (C1), Teardrop_3 (C1), Tonenili_3 (C1), Tortoise16_2 (C1), Trinitium_3 (C1), Turret_3 (C1), Tyke_3 (C1), ValleyTerrace_3 (C1), Vortrix_3 (C1), Wally_3 (C1), Yassified_3 (C1), YoungMoneyMata_3 (C1),

Start 29:

- Found in 4 of 382 (1.0%) of genes in pham

- Manual Annotations of this start: 2 of 305
- Called 75.0% of time when present
- Phage (with cluster) where this start called: Greely_3 (C2), Myrna_3 (C2), Phabba_3 (C2),

Start 38:

- Found in 139 of 382 (36.4%) of genes in pham
- Manual Annotations of this start: 1 of 305
- Called 0.7% of time when present
- Phage (with cluster) where this start called: McGee_3 (C1),

Start 47:

- Found in 25 of 382 (6.5%) of genes in pham
- Manual Annotations of this start: 22 of 305
- Called 100.0% of time when present
- Phage (with cluster) where this start called: Auspice_47 (M1), Aziz_54 (M2), Bongo_47 (M1), Bricole_47 (M1), Diminimus_48 (M1), Dulcita_48 (M1), Estes_56 (M2), FreakyGoo_48 (M1), GardenSalsa_56 (M2), GenevaB15_54 (M2), Glaske16_48 (M1), IPhane7_47 (M1), Izel_48 (M1), KleverKiS_48 (M1), LilhomieP_46 (M1), MrMagoo_56 (M2), Nanosmite_53 (M3), PegLeg_47 (M1), Reindeer_49 (M1), Rey_55 (M2), RoseMarie_53 (M1), Skinny_48 (M1), SlimJimmy_46 (M1), TpudiCK_49 (M1), TyDawg_47 (M1),

Start 50:

- Found in 23 of 382 (6.0%) of genes in pham
- Manual Annotations of this start: 22 of 305
- Called 100.0% of time when present
- Phage (with cluster) where this start called: Azula_68 (CV), Begonia_63 (CV), Blueberry_67 (CV), Confidence_62 (CY1), DirtyBoi_59 (DB), Dmitri_56 (DB), Ferry_64 (CV), Gambino_70 (CV), Guacamole_63 (CV), Jalammah_68 (CV), JasperJr_63 (CV), KappaFarmDelta_66 (CV), Lysidious_67 (CV), Malachai_63 (CV), MissRona_68 (CV), Obliviate_62 (CV), Pipp_67 (CV), RayTheFireFly_64 (DB), Samba_65 (CV), Walrus_63 (CV), Wisp_64 (CV), Zarbodnamra_65 (CV), ZiggyZoo_65 (CV),

Start 52:

- Found in 3 of 382 (0.8%) of genes in pham
- Manual Annotations of this start: 1 of 305
- Called 33.3% of time when present
- Phage (with cluster) where this start called: Rabbitrun_90 (DU2),

Start 53:

- Found in 7 of 382 (1.8%) of genes in pham
- Manual Annotations of this start: 5 of 305
- Called 71.4% of time when present
- Phage (with cluster) where this start called: Azrael100_57 (V), Cosmo_58 (V), EniyanLRS_55 (V), MaryV_58 (V), Wildcat_58 (V),

Start 54:

- Found in 9 of 382 (2.4%) of genes in pham
- Manual Annotations of this start: 4 of 305
- Called 100.0% of time when present

- Phage (with cluster) where this start called: Artu_185 (FC), BooTeria_190 (FC), DunneganBoMo_181 (FC), Ellewin_181 (FC), Emmetator_185 (FC), KSunshine22_186 (FC), Panchaali_184 (FC), Stewart25555_184 (FC), WaddleDee_178 (FC),

Start 55:

- Found in 23 of 382 (6.0%) of genes in pham
- Manual Annotations of this start: 21 of 305
- Called 95.7% of time when present
- Phage (with cluster) where this start called: A3Wally_226 (GD1), Abscondus_136 (CQ1), Aphelion_136 (CQ1), Bachita_140 (CQ1), BrutonGaster_111 (CQ2), Cece_201 (GD3), ClubL_137 (CQ1), Cucurbita_138 (CQ1), Culver_136 (CQ1), Dodo_222 (GD1), Dusty_134 (CQ1), Engineer_139 (CQ1), Erasmago_215 (GD2), Lozinak_137 (CQ1), Miskis_132 (CQ1), Norvs_135 (CQ1), OneUp_121 (CQ2), PauloDiaboli_226 (GD1), PhinkBoden_136 (CQ1), Smoothie_138 (CQ1), Toniann_137 (CQ1), WilliamBoone_135 (CQ1),

Start 56:

- Found in 3 of 382 (0.8%) of genes in pham
- Manual Annotations of this start: 2 of 305
- Called 100.0% of time when present
- Phage (with cluster) where this start called: Big4_210 (GD2), Chilliams_187 (FC), Zooman_191 (GD2),

Start 57:

- Found in 98 of 382 (25.7%) of genes in pham
- Manual Annotations of this start: 69 of 305
- Called 88.8% of time when present
- Phage (with cluster) where this start called: Acquire49_32 (L1), Appletree2_32 (L1), Archie_35 (L2), Atuin_183 (FC), AvadaKedavra_32 (L1), Baoshan_34 (L2), Bazzle_35 (L2), Bellis_33 (L3), BigCheese_35 (L2), BobsGarage_35 (L2), BourbonZero_32 (L3), Breezona_35 (L2), Calm_32 (L1), CicholasNage_32 (L1), Claus_35 (L2), Clautastrophe_33 (L3), Crossroads_35 (L2), DHan_36 (L2), DanBing_35 (L2), Daredevil_89 (DL), DirkDirk_32 (L1), DrSeegs_35 (L2), DuncansLeg_33 (L3), Ellson_33 (L3), Enceladus_32 (L1), Faith1_35 (L2), Finemlucis_35 (L2), Finnry_33 (L3), Gabriela_35 (L2), Gardann_35 (L2), GuuelaD_35 (L2), Hafay_35 (L2), Halena_32 (L1), Itos_35 (L2), Jobypre_33 (L3), Jubie_33 (L3), Kahlid_35 (L2), Kingsolomon_33 (L3), KirDoubleO7_31 (L3), Krypton555_33 (L3), LeoJr_192 (FC), Lewan_35 (L2), LilDestine_35 (L2), LiyuLake_33 (L3), Loadrie_35 (L2), Lolly9_33 (L3), Lumos_33 (L3), Lynnae_35 (L2), MAckerman_32 (L1), Miley16_35 (L2), MiniLon_33 (L3), MiniMac_33 (L3), MkaliMitinis3_35 (L2), Moostard_33 (L3), MsGreen_33 (L3), Netyap_35 (L2), Nicholas_33 (L3), Nicholasp3_35 (L2), OhShagHennessy_32 (L1), OverPar_36 (L2), Poochiewood_32 (L1), Red305_33 (L3), ReginaGlobina_196 (FC), Rose5_32 (L1), Rossetti_35 (L2), Rumpelstiltskin_35 (L2), Samty_33 (L3), Sarshaun_35 (L2), Silverleaf_32 (L1), Snenia_33 (L3), SoJulia_36 (L2), Soap141_35 (L2), Tourach_35 (L2), Towmatter_88 (DL), TriFive_33 (L3), Tyson_32 (L1), Underpass_35 (L2), Vetrix_35 (L2), Wamburgrxpress_32 (L1), Whirlwind_34 (L3), Wigglewiggle_35 (L2), Wilder_35 (L2), Winky_35 (L2), Wyatt2_32 (L1), Zakai_35 (L2), Zaria_32 (L1), ZhongYanYuan_34 (L2),

Start 58:

- Found in 7 of 382 (1.8%) of genes in pham

- Manual Annotations of this start: 5 of 305
- Called 100.0% of time when present
- Phage (with cluster) where this start called: Bloom_194 (FC), FrostedClock_192 (FC), GoldenEssence_178 (FC), Mimi_190 (FC), Phrampa_183 (FC), Racecar_191 (FC), Talia1610_191 (FC),

Start 59:

- Found in 21 of 382 (5.5%) of genes in pham
- Manual Annotations of this start: 12 of 305
- Called 100.0% of time when present
- Phage (with cluster) where this start called: Bantam_99 (DL), BrainDrainer_33 (L4), Bromden_34 (L4), Chaser_32 (L4), ChutneyChips_33 (L4), DatBoi_95 (DL), Douge_32 (L4), Douzhi_32 (L4), DyoEdafos_33 (L4), FarmResident_32 (L4), FloraSnap32_188 (FC), Kropertea_32 (L4), Laure_191 (UNK), Mollymur_99 (DL), PYPDinur_32 (L4), Patbob_188 (FC), Quby_32 (L4), Rockabye_192 (FC), SJReid_193 (FC), Sheng711_32 (L4), SpeedDemon_1010 (DL),

Start 60:

- Found in 2 of 382 (0.5%) of genes in pham
- Manual Annotations of this start: 2 of 305
- Called 100.0% of time when present
- Phage (with cluster) where this start called: JonJames_150 (DD), Yvonnetastic_147 (DD),

Start 61:

- Found in 43 of 382 (11.3%) of genes in pham
- Manual Annotations of this start: 20 of 305
- Called 58.1% of time when present
- Phage (with cluster) where this start called: Aegeus_38 (L5), Alone3_118 (BS), BRock_108 (BS), Baudelaire_38 (L5), Beleetus_112 (BS), Cardigan_153 (DD), Colossa_109 (KA), EhyElimayoE_42 (BM), Fudan_112 (BS), Garnacho_107 (BS), GiJojo_105 (BS), JoeDirt_32 (L1), JustBecause_33 (BM), Kela_33 (BM), Kradal_42 (BM), LeBron_32 (L1), LuckySocke_114 (BS), Nirvana_43 (BM), Park1214_121 (BS), Quantum_41 (BM), Sarkar_44 (BM), Satis_42 (BM), Talos_116 (BS), UPIE_32 (L1), VanLee_110 (KA),

Start 63:

- Found in 52 of 382 (13.6%) of genes in pham
- Manual Annotations of this start: 2 of 305
- Called 5.8% of time when present
- Phage (with cluster) where this start called: LilJank_88 (DU2), Neville_85 (DU2), Trax_88 (DU2),

Start 64:

- Found in 13 of 382 (3.4%) of genes in pham
- Manual Annotations of this start: 3 of 305
- Called 23.1% of time when present
- Phage (with cluster) where this start called: Kudrefre_95 (DU1), Sephiroth_92 (DU1), Syleon_95 (DU1),

Start 72:

- Found in 15 of 382 (3.9%) of genes in pham
- Manual Annotations of this start: 1 of 305

- Called 6.7% of time when present
- Phage (with cluster) where this start called: Frankenweenie_45 (BM),

Start 96:

- Found in 42 of 382 (11.0%) of genes in pham
- No Manual Annotations of this start.
- Called 2.4% of time when present
- Phage (with cluster) where this start called: Geeche_136 (CQ1),

Summary by clusters:

There are 28 clusters represented in this pham: GD1, DL, GD3, BM, DD, L1, DB, GD2, FC, M1, M3, BS, V, DU2, CV, DU1, CQ1, CY1, L4, L5, L2, L3, C2, UNK, C1, KA, CQ2, M2,

Info for manual annotations of cluster BM:

- Start number 61 was manually annotated 7 times for cluster BM.
- Start number 72 was manually annotated 1 time for cluster BM.

Info for manual annotations of cluster BS:

- Start number 61 was manually annotated 7 times for cluster BS.

Info for manual annotations of cluster C1:

- Start number 26 was manually annotated 109 times for cluster C1.
- Start number 38 was manually annotated 1 time for cluster C1.

Info for manual annotations of cluster C2:

- Start number 24 was manually annotated 1 time for cluster C2.
- Start number 29 was manually annotated 2 times for cluster C2.

Info for manual annotations of cluster CQ1:

- Start number 55 was manually annotated 15 times for cluster CQ1.

Info for manual annotations of cluster CQ2:

- Start number 55 was manually annotated 2 times for cluster CQ2.

Info for manual annotations of cluster CV:

- Start number 50 was manually annotated 18 times for cluster CV.

Info for manual annotations of cluster CY1:

- Start number 50 was manually annotated 1 time for cluster CY1.

Info for manual annotations of cluster DB:

- Start number 50 was manually annotated 3 times for cluster DB.

Info for manual annotations of cluster DD:

- Start number 60 was manually annotated 2 times for cluster DD.

Info for manual annotations of cluster DL:

- Start number 57 was manually annotated 2 times for cluster DL.
- Start number 59 was manually annotated 4 times for cluster DL.

Info for manual annotations of cluster DU1:

- Start number 14 was manually annotated 1 time for cluster DU1.
- Start number 64 was manually annotated 3 times for cluster DU1.

Info for manual annotations of cluster DU2:

- Start number 52 was manually annotated 1 time for cluster DU2.
- Start number 63 was manually annotated 2 times for cluster DU2.

Info for manual annotations of cluster FC:

- Start number 54 was manually annotated 4 times for cluster FC.
- Start number 57 was manually annotated 1 time for cluster FC.
- Start number 58 was manually annotated 5 times for cluster FC.
- Start number 59 was manually annotated 2 times for cluster FC.

Info for manual annotations of cluster GD1:

- Start number 55 was manually annotated 3 times for cluster GD1.

Info for manual annotations of cluster GD2:

- Start number 56 was manually annotated 2 times for cluster GD2.

Info for manual annotations of cluster GD3:

- Start number 55 was manually annotated 1 time for cluster GD3.

Info for manual annotations of cluster KA:

- Start number 61 was manually annotated 1 time for cluster KA.

Info for manual annotations of cluster L1:

- Start number 57 was manually annotated 16 times for cluster L1.
- Start number 61 was manually annotated 3 times for cluster L1.

Info for manual annotations of cluster L2:

- Start number 57 was manually annotated 31 times for cluster L2.

Info for manual annotations of cluster L3:

- Start number 57 was manually annotated 19 times for cluster L3.

Info for manual annotations of cluster L4:

- Start number 59 was manually annotated 6 times for cluster L4.

Info for manual annotations of cluster L5:

- Start number 61 was manually annotated 2 times for cluster L5.

Info for manual annotations of cluster M1:

- Start number 47 was manually annotated 15 times for cluster M1.

Info for manual annotations of cluster M2:

- Start number 47 was manually annotated 6 times for cluster M2.

Info for manual annotations of cluster M3:

- Start number 47 was manually annotated 1 time for cluster M3.

Info for manual annotations of cluster V:

- Start number 53 was manually annotated 5 times for cluster V.

Gene Information:

Gene: A3Wally_226 Start: 120716, Stop: 121450, Start Num: 55

Candidate Starts for A3Wally_226:

(Start: 55 @120716 has 21 MA's), (94, 120911), (103, 120968), (107, 120983), (119, 121007), (128, 121040), (133, 121082), (136, 121097), (156, 121208), (165, 121244), (207, 121394),

Gene: Ablatia_3 Start: 477, Stop: 1343, Start Num: 26

Candidate Starts for Ablatia_3:

(Start: 26 @477 has 109 MA's), (Start: 38 @516 has 1 MA's), (62, 594), (67, 612), (70, 633), (74, 669), (80, 699), (91, 753), (102, 837), (104, 843), (106, 849), (127, 912), (159, 1104), (165, 1131), (174, 1164), (184, 1194), (209, 1296), (210, 1299),

Gene: Abscondus_136 Start: 75128, Stop: 75835, Start Num: 55

Candidate Starts for Abscondus_136:

(Start: 55 @75128 has 21 MA's), (76, 75236), (84, 75260), (96, 75308), (141, 75512), (152, 75572), (211, 75794),

Gene: Acquire49_32 Start: 28983, Stop: 28231, Start Num: 57

Candidate Starts for Acquire49_32:

(Start: 57 @28983 has 69 MA's), (Start: 61 @28977 has 20 MA's), (91, 28815), (97, 28761), (99, 28752), (103, 28728), (106, 28719), (121, 28689), (128, 28662), (132, 28629), (135, 28611), (152, 28509), (154, 28503), (158, 28488), (162, 28470), (164, 28464), (165, 28458), (184, 28395), (204, 28317), (211, 28287), (220, 28254),

Gene: Ading_3 Start: 456, Stop: 1322, Start Num: 26

Candidate Starts for Ading_3:

(Start: 26 @456 has 109 MA's), (Start: 38 @495 has 1 MA's), (62, 573), (67, 591), (70, 612), (74, 648), (80, 678), (91, 732), (102, 816), (104, 822), (106, 828), (127, 891), (159, 1083), (165, 1110), (174, 1143), (184, 1173), (209, 1275), (210, 1278),

Gene: Adlitam_3 Start: 473, Stop: 1339, Start Num: 26

Candidate Starts for Adlitam_3:

(Start: 26 @473 has 109 MA's), (Start: 38 @512 has 1 MA's), (62, 590), (67, 608), (70, 629), (74, 665), (80, 695), (91, 749), (102, 833), (104, 839), (106, 845), (127, 908), (159, 1100), (165, 1127), (174, 1160), (184, 1190), (209, 1292), (210, 1295),

Gene: Aegeus_38 Start: 32914, Stop: 32189, Start Num: 61

Candidate Starts for Aegeus_38:

(Start: 61 @32914 has 20 MA's), (86, 32779), (102, 32668), (103, 32665), (128, 32599), (129, 32593), (135, 32548), (158, 32425), (162, 32407), (164, 32401), (165, 32395), (178, 32347), (184, 32332), (185, 32329), (201, 32272),

Gene: Alone3_118 Start: 63397, Stop: 64086, Start Num: 61

Candidate Starts for Alone3_118:

(Start: 61 @63397 has 20 MA's), (Start: 72 @63463 has 1 MA's), (73, 63472), (97, 63595), (145, 63802), (165, 63895), (169, 63904), (191, 63976), (195, 63991), (201, 64018),

Gene: Amataga_3 Start: 477, Stop: 1343, Start Num: 26

Candidate Starts for Amataga_3:

(Start: 26 @477 has 109 MA's), (Start: 38 @516 has 1 MA's), (62, 594), (67, 612), (70, 633), (74, 669), (80, 699), (91, 753), (102, 837), (104, 843), (106, 849), (127, 912), (159, 1104), (165, 1131), (174, 1164), (184, 1194), (209, 1296), (210, 1299),

Gene: Aphelion_136 Start: 76000, Stop: 76707, Start Num: 55

Candidate Starts for Aphelion_136:

(Start: 55 @76000 has 21 MA's), (76, 76108), (84, 76132), (96, 76180), (141, 76384), (152, 76444), (211, 76666),

Gene: Appletree2_32 Start: 28926, Stop: 28174, Start Num: 57

Candidate Starts for Appletree2_32:

(Start: 57 @28926 has 69 MA's), (Start: 61 @28920 has 20 MA's), (91, 28758), (97, 28704), (99, 28695), (103, 28671), (106, 28662), (121, 28632), (128, 28605), (132, 28572), (135, 28554), (151, 28458), (152, 28452), (154, 28446), (158, 28431), (162, 28413), (164, 28407), (165, 28401), (184, 28338), (204, 28260), (211, 28230), (220, 28197),

Gene: ArcherS7_3 Start: 473, Stop: 1339, Start Num: 26

Candidate Starts for ArcherS7_3:

(Start: 26 @473 has 109 MA's), (Start: 38 @512 has 1 MA's), (62, 590), (67, 608), (70, 629), (74, 665), (80, 695), (91, 749), (102, 833), (104, 839), (106, 845), (127, 908), (159, 1100), (165, 1127), (174, 1160), (184, 1190), (209, 1292), (210, 1295),

Gene: Archie_35 Start: 30615, Stop: 29869, Start Num: 57

Candidate Starts for Archie_35:

(Start: 57 @30615 has 69 MA's), (Start: 63 @30597 has 2 MA's), (84, 30480), (86, 30471), (97, 30390), (103, 30357), (124, 30309), (128, 30291), (132, 30258), (135, 30240), (154, 30132), (158, 30117), (162, 30099), (164, 30093), (165, 30087), (166, 30084), (184, 30024), (194, 29994), (201, 29964), (214, 29904), (216, 29895), (219, 29886),

Gene: Artu_185 Start: 135788, Stop: 136462, Start Num: 54

Candidate Starts for Artu_185:

(Start: 54 @135788 has 4 MA's), (73, 135890), (96, 136001), (106, 136055), (107, 136061), (147, 136217), (164, 136283), (201, 136394),

Gene: Astraea_3 Start: 473, Stop: 1339, Start Num: 26

Candidate Starts for Astraea_3:

(Start: 26 @473 has 109 MA's), (Start: 38 @512 has 1 MA's), (62, 590), (67, 608), (70, 629), (74, 665), (80, 695), (91, 749), (102, 833), (104, 839), (106, 845), (127, 908), (159, 1100), (165, 1127), (174, 1160), (184, 1190), (210, 1295),

Gene: Atlantean_3 Start: 477, Stop: 1343, Start Num: 26

Candidate Starts for Atlantean_3:

(Start: 26 @477 has 109 MA's), (Start: 38 @516 has 1 MA's), (62, 594), (67, 612), (70, 633), (74, 669), (80, 699), (91, 753), (102, 837), (104, 843), (106, 849), (127, 912), (159, 1104), (165, 1131), (174, 1164), (184, 1194), (209, 1296), (210, 1299),

Gene: Atuin_183 Start: 129201, Stop: 129866, Start Num: 57

Candidate Starts for Atuin_183:

(Start: 57 @129201 has 69 MA's), (73, 129285), (96, 129396), (107, 129456), (129, 129519), (147, 129612), (164, 129678), (165, 129684), (201, 129789),

Gene: Audrick_3 Start: 456, Stop: 1322, Start Num: 26

Candidate Starts for Audrick_3:

(Start: 26 @456 has 109 MA's), (Start: 38 @495 has 1 MA's), (62, 573), (67, 591), (70, 612), (74, 648), (80, 678), (91, 732), (102, 816), (104, 822), (106, 828), (127, 891), (159, 1083), (165, 1110), (174, 1143), (184, 1173), (209, 1275), (210, 1278),

Gene: Auspice_47 Start: 35928, Stop: 35131, Start Num: 47

Candidate Starts for Auspice_47:

(Start: 47 @35928 has 22 MA's), (70, 35844), (73, 35814), (74, 35808), (91, 35712), (94, 35682), (102, 35628), (111, 35595), (143, 35439), (147, 35412), (148, 35409), (159, 35367), (165, 35340), (182, 35286), (194, 35247), (197, 35232), (211, 35169), (218, 35139),

Gene: AvadaKedavra_32 Start: 28993, Stop: 28241, Start Num: 57

Candidate Starts for AvadaKedavra_32:

(Start: 57 @28993 has 69 MA's), (Start: 61 @28987 has 20 MA's), (91, 28825), (97, 28771), (103, 28738), (106, 28729), (121, 28699), (128, 28672), (132, 28639), (135, 28621), (152, 28519), (154, 28513), (158, 28498), (162, 28480), (164, 28474), (165, 28468), (184, 28405), (204, 28327), (211, 28297), (220, 28264),

Gene: Aziz_54 Start: 37868, Stop: 37068, Start Num: 47

Candidate Starts for Aziz_54:

(Start: 47 @37868 has 22 MA's), (73, 37751), (74, 37745), (98, 37589), (102, 37565), (104, 37559), (106, 37553), (111, 37532), (147, 37349), (148, 37346), (165, 37277), (174, 37244), (182, 37223), (209, 37115), (211, 37106), (218, 37076),

Gene: Azrael100_57 Start: 41517, Stop: 40768, Start Num: 53

Candidate Starts for Azrael100_57:

(6, 41754), (7, 41742), (8, 41706), (13, 41661), (17, 41637), (40, 41553), (Start: 53 @41517 has 5 MA's), (62, 41478), (69, 41445), (Start: 72 @41418 has 1 MA's), (74, 41403), (78, 41379), (105, 41211), (109, 41196), (128, 41139), (151, 41037), (165, 40980), (168, 40968), (194, 40887), (201, 40857), (203, 40845), (209, 40818), (211, 40809), (212, 40803), (220, 40776),

Gene: Azula_68 Start: 44110, Stop: 44895, Start Num: 50

Candidate Starts for Azula_68:

(39, 44080), (Start: 50 @44110 has 22 MA's), (73, 44227), (74, 44233), (96, 44353), (97, 44365), (134, 44527), (138, 44545), (150, 44626), (151, 44629), (204, 44827),

Gene: BRock_108 Start: 57585, Stop: 58268, Start Num: 61

Candidate Starts for BRock_108:

(30, 57486), (Start: 61 @57585 has 20 MA's), (67, 57609), (70, 57630), (73, 57660), (74, 57666), (75, 57672), (90, 57729), (96, 57771), (100, 57795), (113, 57846), (145, 57984), (165, 58077), (170, 58092), (173, 58101), (181, 58122), (185, 58143), (191, 58158), (208, 58236), (211, 58248), (213, 58257),

Gene: Babyland_3 Start: 477, Stop: 1343, Start Num: 26

Candidate Starts for Babyland_3:

(Start: 26 @477 has 109 MA's), (Start: 38 @516 has 1 MA's), (62, 594), (67, 612), (70, 633), (74, 669), (80, 699), (91, 753), (102, 837), (104, 843), (106, 849), (127, 912), (159, 1104), (165, 1131), (174, 1164), (184, 1194), (209, 1296), (210, 1299),

Gene: Bachita_140 Start: 76138, Stop: 76845, Start Num: 55

Candidate Starts for Bachita_140:

(Start: 55 @76138 has 21 MA's), (76, 76246), (84, 76270), (96, 76318), (141, 76522), (152, 76582), (211, 76804),

Gene: BackyardAgain_3 Start: 473, Stop: 1339, Start Num: 26

Candidate Starts for BackyardAgain_3:

(Start: 26 @473 has 109 MA's), (Start: 38 @512 has 1 MA's), (62, 590), (67, 608), (70, 629), (74, 665), (80, 695), (91, 749), (102, 833), (104, 839), (106, 845), (127, 908), (159, 1100), (165, 1127), (174, 1160), (184, 1190), (209, 1292), (210, 1295),

Gene: BadAgartude_3 Start: 494, Stop: 1360, Start Num: 26

Candidate Starts for BadAgartude_3:

(Start: 26 @494 has 109 MA's), (Start: 38 @533 has 1 MA's), (62, 611), (67, 629), (70, 650), (74, 686), (80, 716), (91, 770), (102, 854), (104, 860), (106, 866), (123, 914), (127, 929), (159, 1121), (165, 1148), (174, 1181), (184, 1211), (209, 1313), (210, 1316),

Gene: Bangla1971_3 Start: 473, Stop: 1339, Start Num: 26

Candidate Starts for Bangla1971_3:

(Start: 26 @473 has 109 MA's), (Start: 38 @512 has 1 MA's), (62, 590), (67, 608), (70, 629), (74, 665), (80, 695), (91, 749), (102, 833), (104, 839), (106, 845), (127, 908), (159, 1100), (165, 1127), (174, 1160), (184, 1190), (209, 1292), (210, 1295),

Gene: Bantam_99 Start: 65318, Stop: 65998, Start Num: 59

Candidate Starts for Bantam_99:

(Start: 57 @65315 has 69 MA's), (Start: 59 @65318 has 12 MA's), (73, 65396), (76, 65420), (94, 65483), (97, 65507), (144, 65708), (160, 65780), (165, 65804), (215, 65990),

Gene: Baoshan_34 Start: 29947, Stop: 29201, Start Num: 57

Candidate Starts for Baoshan_34:

(Start: 57 @29947 has 69 MA's), (97, 29722), (103, 29689), (121, 29650), (128, 29623), (132, 29590), (135, 29572), (154, 29464), (158, 29449), (160, 29443), (162, 29431), (164, 29425), (165, 29419), (166, 29416), (184, 29356), (194, 29326), (201, 29296), (214, 29236), (216, 29227), (219, 29218),

Gene: Basquiat_3 Start: 456, Stop: 1322, Start Num: 26

Candidate Starts for Basquiat_3:

(Start: 26 @456 has 109 MA's), (Start: 38 @495 has 1 MA's), (62, 573), (67, 591), (70, 612), (74, 648), (80, 678), (91, 732), (102, 816), (104, 822), (106, 828), (127, 891), (159, 1083), (165, 1110), (174, 1143), (184, 1173), (209, 1275), (210, 1278),

Gene: Baudelaire_38 Start: 32914, Stop: 32189, Start Num: 61

Candidate Starts for Baudelaire_38:

(Start: 61 @32914 has 20 MA's), (86, 32779), (102, 32668), (103, 32665), (128, 32599), (129, 32593), (135, 32548), (158, 32425), (162, 32407), (164, 32401), (165, 32395), (178, 32347), (184, 32332), (185, 32329), (201, 32272),

Gene: Bazzle_35 Start: 30364, Stop: 29618, Start Num: 57

Candidate Starts for Bazzle_35:

(Start: 57 @30364 has 69 MA's), (Start: 63 @30346 has 2 MA's), (84, 30229), (86, 30220), (97, 30139), (103, 30106), (124, 30058), (128, 30040), (132, 30007), (135, 29989), (154, 29881), (158, 29866), (162, 29848), (164, 29842), (165, 29836), (166, 29833), (184, 29773), (194, 29743), (201, 29713), (214, 29653), (216, 29644), (219, 29635),

Gene: Begonia_63 Start: 42626, Stop: 43411, Start Num: 50

Candidate Starts for Begonia_63:

(39, 42596), (Start: 50 @42626 has 22 MA's), (73, 42743), (74, 42749), (97, 42881), (105, 42920), (134, 43043), (138, 43061), (150, 43142), (151, 43145), (204, 43343),

Gene: Beleetus_112 Start: 61004, Stop: 61693, Start Num: 61

Candidate Starts for Beleetus_112:

(Start: 61 @61004 has 20 MA's), (67, 61028), (73, 61079), (77, 61106), (79, 61112), (97, 61202), (145, 61409), (165, 61502), (191, 61583),

Gene: Belieber_3 Start: 477, Stop: 1343, Start Num: 26

Candidate Starts for Belieber_3:

(Start: 26 @477 has 109 MA's), (Start: 38 @516 has 1 MA's), (62, 594), (67, 612), (70, 633), (74, 669), (80, 699), (91, 753), (102, 837), (104, 843), (106, 849), (127, 912), (159, 1104), (165, 1131), (174, 1164), (184, 1194), (209, 1296), (210, 1299),

Gene: Bellis_33 Start: 30388, Stop: 29648, Start Num: 57

Candidate Starts for Bellis_33:

(Start: 57 @30388 has 69 MA's), (65, 30364), (71, 30328), (88, 30238), (124, 30082), (135, 30013), (140, 29992), (158, 29890), (162, 29872), (164, 29866), (165, 29860), (189, 29782), (204, 29719), (211, 29689),

Gene: Big4_210 Start: 117042, Stop: 117785, Start Num: 56

Candidate Starts for Big4_210:

(Start: 56 @117042 has 2 MA's), (94, 117240), (120, 117339), (133, 117411), (136, 117426), (149, 117507), (151, 117516), (159, 117546), (165, 117573), (205, 117717), (207, 117723),

Gene: BigCheese_35 Start: 30126, Stop: 29380, Start Num: 57

Candidate Starts for BigCheese_35:

(Start: 57 @30126 has 69 MA's), (Start: 63 @30108 has 2 MA's), (97, 29901), (103, 29868), (121, 29829), (128, 29802), (132, 29769), (135, 29751), (154, 29643), (158, 29628), (160, 29622), (162, 29610), (164, 29604), (165, 29598), (166, 29595), (184, 29535), (194, 29505), (201, 29475), (214, 29415), (216, 29406), (219, 29397),

Gene: BigCity_5 Start: 1066, Stop: 1932, Start Num: 26

Candidate Starts for BigCity_5:

(Start: 26 @1066 has 109 MA's), (Start: 38 @1105 has 1 MA's), (62, 1183), (67, 1201), (70, 1222), (74, 1258), (80, 1288), (91, 1342), (102, 1426), (104, 1432), (106, 1438), (127, 1501), (159, 1693), (165, 1720), (174, 1753), (184, 1783), (210, 1888),

Gene: Bigswole_3 Start: 473, Stop: 1339, Start Num: 26

Candidate Starts for Bigswole_3:

(Start: 26 @473 has 109 MA's), (Start: 38 @512 has 1 MA's), (62, 590), (67, 608), (70, 629), (74, 665), (80, 695), (91, 749), (102, 833), (104, 839), (106, 845), (127, 908), (159, 1100), (165, 1127), (174, 1160), (184, 1190), (210, 1295),

Gene: Blackbrain_3 Start: 473, Stop: 1339, Start Num: 26

Candidate Starts for Blackbrain_3:

(Start: 26 @473 has 109 MA's), (Start: 38 @512 has 1 MA's), (62, 590), (67, 608), (70, 629), (74, 665), (80, 695), (91, 749), (102, 833), (104, 839), (106, 845), (123, 893), (127, 908), (159, 1100), (165, 1127), (174, 1160), (184, 1190), (209, 1292), (210, 1295),

Gene: Blackdragon_3 Start: 477, Stop: 1343, Start Num: 26

Candidate Starts for Blackdragon_3:

(Start: 26 @477 has 109 MA's), (Start: 38 @516 has 1 MA's), (62, 594), (67, 612), (70, 633), (74, 669), (80, 699), (91, 753), (102, 837), (104, 843), (106, 849), (123, 897), (127, 912), (159, 1104), (165, 1131), (174, 1164), (184, 1194), (210, 1299),

Gene: Bloom_194 Start: 131939, Stop: 132589, Start Num: 58

Candidate Starts for Bloom_194:

(Start: 58 @131939 has 5 MA's), (73, 132020), (78, 132050), (106, 132185), (107, 132191), (147, 132347), (164, 132413), (165, 132419), (194, 132494), (207, 132551), (212, 132578),

Gene: Blueberry_67 Start: 44110, Stop: 44895, Start Num: 50

Candidate Starts for Blueberry_67:

(39, 44080), (Start: 50 @44110 has 22 MA's), (73, 44227), (74, 44233), (96, 44353), (97, 44365), (134, 44527), (138, 44545), (150, 44626), (151, 44629), (204, 44827),

Gene: BobaPhatt_3 Start: 477, Stop: 1343, Start Num: 26

Candidate Starts for BobaPhatt_3:

(Start: 26 @477 has 109 MA's), (Start: 38 @516 has 1 MA's), (62, 594), (67, 612), (70, 633), (74, 669), (80, 699), (91, 753), (102, 837), (104, 843), (106, 849), (127, 912), (159, 1104), (165, 1131), (174, 1164), (184, 1194), (209, 1296), (210, 1299),

Gene: BobsGarage_35 Start: 30126, Stop: 29380, Start Num: 57

Candidate Starts for BobsGarage_35:

(Start: 57 @30126 has 69 MA's), (Start: 63 @30108 has 2 MA's), (97, 29901), (103, 29868), (121, 29829), (128, 29802), (132, 29769), (135, 29751), (154, 29643), (158, 29628), (160, 29622), (162, 29610), (164, 29604), (165, 29598), (166, 29595), (184, 29535), (194, 29505), (201, 29475), (214, 29415), (216, 29406), (219, 29397),

Gene: Bongo_47 Start: 35928, Stop: 35131, Start Num: 47

Candidate Starts for Bongo_47:

(Start: 47 @35928 has 22 MA's), (70, 35844), (73, 35814), (74, 35808), (91, 35712), (94, 35682), (102, 35628), (111, 35595), (143, 35439), (147, 35412), (148, 35409), (159, 35367), (165, 35340), (182, 35286), (194, 35247), (197, 35232), (211, 35169), (218, 35139),

Gene: BooTeria_190 Start: 135294, Stop: 135968, Start Num: 54

Candidate Starts for BooTeria_190:

(Start: 54 @135294 has 4 MA's), (65, 135336), (73, 135396), (96, 135507), (106, 135561), (107, 135567), (147, 135723), (164, 135789), (201, 135900),

Gene: BourbonZero_32 Start: 30339, Stop: 29599, Start Num: 57

Candidate Starts for BourbonZero_32:

(Start: 57 @30339 has 69 MA's), (65, 30315), (71, 30279), (88, 30189), (124, 30033), (131, 29991), (135, 29964), (140, 29943), (153, 29859), (158, 29841), (162, 29823), (164, 29817), (165, 29811), (204, 29670), (211, 29640),

Gene: BrainDrainer_33 Start: 29227, Stop: 28490, Start Num: 59

Candidate Starts for BrainDrainer_33:

(3, 29617), (45, 29281), (46, 29272), (Start: 59 @29227 has 12 MA's), (Start: 63 @29212 has 2 MA's), (65, 29206), (86, 29086), (105, 28966), (116, 28942), (124, 28924), (128, 28906), (135, 28855), (154, 28747), (158, 28732), (162, 28714), (164, 28708), (165, 28702),

Gene: Breeniome_3 Start: 473, Stop: 1339, Start Num: 26

Candidate Starts for Breeniome_3:

(Start: 26 @473 has 109 MA's), (Start: 38 @512 has 1 MA's), (62, 590), (67, 608), (70, 629), (74, 665), (80, 695), (91, 749), (102, 833), (104, 839), (106, 845), (127, 908), (159, 1100), (165, 1127), (174, 1160), (184, 1190), (209, 1292), (210, 1295),

Gene: Breezona_35 Start: 30126, Stop: 29380, Start Num: 57

Candidate Starts for Breezona_35:

(Start: 57 @30126 has 69 MA's), (Start: 63 @30108 has 2 MA's), (97, 29901), (103, 29868), (121, 29829), (128, 29802), (132, 29769), (135, 29751), (154, 29643), (158, 29628), (160, 29622), (162, 29610), (164, 29604), (165, 29598), (166, 29595), (184, 29535), (194, 29505), (201, 29475), (214, 29415), (216, 29406), (219, 29397),

Gene: Bricole_47 Start: 35914, Stop: 35117, Start Num: 47

Candidate Starts for Bricole_47:

(Start: 47 @35914 has 22 MA's), (70, 35830), (73, 35800), (74, 35794), (91, 35698), (94, 35668), (102, 35614), (111, 35581), (143, 35425), (147, 35398), (148, 35395), (159, 35353), (165, 35326), (182, 35272), (194, 35233), (197, 35218), (211, 35155), (218, 35125),

Gene: Bromden_34 Start: 29644, Stop: 28907, Start Num: 59

Candidate Starts for Bromden_34:

(45, 29698), (46, 29689), (Start: 59 @29644 has 12 MA's), (Start: 63 @29629 has 2 MA's), (65, 29623), (86, 29503), (96, 29434), (105, 29383), (116, 29359), (124, 29341), (128, 29323), (135, 29272), (154, 29164), (158, 29149), (162, 29131), (164, 29125), (165, 29119), (178, 29071),

Gene: BrutonGaster_111 Start: 69747, Stop: 70487, Start Num: 55

Candidate Starts for BrutonGaster_111:

(Start: 55 @69747 has 21 MA's), (66, 69780), (94, 69924), (101, 69972), (169, 70278), (182, 70314), (193, 70350),

Gene: Bxz1_3 Start: 473, Stop: 1339, Start Num: 26

Candidate Starts for Bxz1_3:

(Start: 26 @473 has 109 MA's), (Start: 38 @512 has 1 MA's), (62, 590), (67, 608), (70, 629), (74, 665), (80, 695), (91, 749), (102, 833), (104, 839), (106, 845), (123, 893), (127, 908), (159, 1100), (165, 1127), (174, 1160), (184, 1190), (210, 1295),

Gene: Cactojaque_2 Start: 407, Stop: 1273, Start Num: 26

Candidate Starts for Cactojaque_2:

(Start: 26 @407 has 109 MA's), (Start: 38 @446 has 1 MA's), (62, 524), (67, 542), (70, 563), (74, 599), (80, 629), (91, 683), (102, 767), (104, 773), (106, 779), (127, 842), (159, 1034), (165, 1061), (174, 1094), (184, 1124), (209, 1226), (210, 1229),

Gene: Calm_32 Start: 28998, Stop: 28246, Start Num: 57

Candidate Starts for Calm_32:

(Start: 57 @28998 has 69 MA's), (Start: 61 @28992 has 20 MA's), (91, 28830), (97, 28776), (99, 28767), (103, 28743), (106, 28734), (121, 28704), (128, 28677), (132, 28644), (135, 28626), (151, 28530), (152, 28524), (154, 28518), (158, 28503), (162, 28485), (164, 28479), (165, 28473), (184, 28410), (204, 28332), (211, 28302), (220, 28269),

Gene: Caravan_3 Start: 473, Stop: 1339, Start Num: 26

Candidate Starts for Caravan_3:

(Start: 26 @473 has 109 MA's), (Start: 38 @512 has 1 MA's), (62, 590), (67, 608), (70, 629), (74, 665), (80, 695), (91, 749), (102, 833), (104, 839), (106, 845), (123, 893), (127, 908), (159, 1100), (165, 1127), (174, 1160), (184, 1190), (210, 1295), (211, 1301),

Gene: Cardigan_153 Start: 82886, Stop: 83590, Start Num: 61

Candidate Starts for Cardigan_153:

(Start: 61 @82886 has 20 MA's), (66, 82904), (76, 82982), (84, 83006), (90, 83024), (98, 83084), (137, 83234), (155, 83324), (209, 83537),

Gene: Catera_3 Start: 477, Stop: 1343, Start Num: 26

Candidate Starts for Catera_3:

(Start: 26 @477 has 109 MA's), (Start: 38 @516 has 1 MA's), (62, 594), (67, 612), (70, 633), (74, 669), (80, 699), (91, 753), (102, 837), (104, 843), (106, 849), (123, 897), (127, 912), (159, 1104), (165, 1131), (174, 1164), (184, 1194), (209, 1296), (210, 1299),

Gene: Cece_201 Start: 121407, Stop: 122135, Start Num: 55

Candidate Starts for Cece_201:

(Start: 55 @121407 has 21 MA's), (96, 121617), (103, 121662), (129, 121740), (133, 121776), (136, 121791), (138, 121797), (142, 121836), (149, 121872), (151, 121881), (159, 121911), (164, 121932), (165, 121938), (192, 122022), (195, 122034), (202, 122070), (207, 122088),

Gene: Chargie21_3 Start: 456, Stop: 1322, Start Num: 26

Candidate Starts for Chargie21_3:

(Start: 26 @456 has 109 MA's), (Start: 38 @495 has 1 MA's), (62, 573), (67, 591), (70, 612), (74, 648), (80, 678), (91, 732), (102, 816), (104, 822), (106, 828), (127, 891), (159, 1083), (165, 1110), (174, 1143), (184, 1173), (209, 1275), (210, 1278),

Gene: CharlieB_3 Start: 473, Stop: 1339, Start Num: 26

Candidate Starts for CharlieB_3:

(Start: 26 @473 has 109 MA's), (Start: 38 @512 has 1 MA's), (62, 590), (67, 608), (70, 629), (74, 665), (80, 695), (91, 749), (102, 833), (104, 839), (106, 845), (127, 908), (159, 1100), (165, 1127), (174, 1160), (184, 1190), (210, 1295),

Gene: Chaser_32 Start: 29045, Stop: 28308, Start Num: 59

Candidate Starts for Chaser_32:

(45, 29099), (46, 29090), (Start: 59 @29045 has 12 MA's), (Start: 63 @29030 has 2 MA's), (65, 29024), (105, 28784), (116, 28760), (124, 28742), (128, 28724), (135, 28673), (154, 28565), (158, 28550), (162, 28532), (164, 28526), (165, 28520), (178, 28472),

Gene: ChaylaJr_3 Start: 498, Stop: 1364, Start Num: 26

Candidate Starts for ChaylaJr_3:

(Start: 26 @498 has 109 MA's), (Start: 38 @537 has 1 MA's), (62, 615), (67, 633), (70, 654), (74, 690), (80, 720), (91, 774), (102, 858), (104, 864), (106, 870), (127, 933), (159, 1125), (165, 1152), (174, 1185), (184, 1215), (209, 1317), (210, 1320),

Gene: ChickenPhender_3 Start: 456, Stop: 1322, Start Num: 26

Candidate Starts for ChickenPhender_3:

(Start: 26 @456 has 109 MA's), (Start: 38 @495 has 1 MA's), (62, 573), (67, 591), (70, 612), (74, 648), (80, 678), (91, 732), (102, 816), (104, 822), (106, 828), (127, 891), (159, 1083), (165, 1110), (174, 1143), (184, 1173), (209, 1275), (210, 1278),

Gene: Chilliams_187 Start: 126484, Stop: 127137, Start Num: 56

Candidate Starts for Chilliams_187:

(Start: 56 @126484 has 2 MA's), (73, 126568), (96, 126679), (100, 126703), (107, 126739), (147, 126895), (165, 126967), (176, 127003), (200, 127069), (212, 127126),

Gene: Chomp_3 Start: 477, Stop: 1343, Start Num: 26

Candidate Starts for Chomp_3:

(Start: 26 @477 has 109 MA's), (Start: 38 @516 has 1 MA's), (62, 594), (67, 612), (70, 633), (74, 669), (80, 699), (91, 753), (102, 837), (104, 843), (106, 849), (127, 912), (159, 1104), (165, 1131), (174, 1164), (184, 1194), (209, 1296), (210, 1299),

Gene: ChutneyChips_33 Start: 29224, Stop: 28487, Start Num: 59

Candidate Starts for ChutneyChips_33:

(45, 29278), (46, 29269), (Start: 59 @29224 has 12 MA's), (Start: 63 @29209 has 2 MA's), (65, 29203), (86, 29083), (105, 28963), (116, 28939), (124, 28921), (128, 28903), (135, 28852), (154, 28744), (158, 28729), (162, 28711), (164, 28705), (165, 28699), (178, 28651),

Gene: CicholasNage_32 Start: 28985, Stop: 28233, Start Num: 57

Candidate Starts for CicholasNage_32:

(Start: 57 @28985 has 69 MA's), (Start: 61 @28979 has 20 MA's), (91, 28817), (97, 28763), (99, 28754), (103, 28730), (106, 28721), (121, 28691), (128, 28664), (132, 28631), (135, 28613), (151, 28517), (152, 28511), (154, 28505), (158, 28490), (162, 28472), (164, 28466), (165, 28460), (184, 28397), (204, 28319), (211, 28289), (220, 28256),

Gene: CindyLou_3 Start: 477, Stop: 1343, Start Num: 26

Candidate Starts for CindyLou_3:

(Start: 26 @477 has 109 MA's), (Start: 38 @516 has 1 MA's), (62, 594), (67, 612), (70, 633), (74, 669), (80, 699), (91, 753), (102, 837), (104, 843), (106, 849), (127, 912), (159, 1104), (165, 1131), (174, 1164), (184, 1194), (209, 1296), (210, 1299),

Gene: Claus_35 Start: 30103, Stop: 29357, Start Num: 57

Candidate Starts for Claus_35:

(44, 30151), (Start: 57 @30103 has 69 MA's), (97, 29878), (103, 29845), (121, 29806), (128, 29779), (132, 29746), (135, 29728), (154, 29620), (158, 29605), (162, 29587), (164, 29581), (165, 29575), (166, 29572), (184, 29512), (194, 29482), (201, 29452), (214, 29392), (216, 29383), (219, 29374),

Gene: Clautastrophe_33 Start: 30387, Stop: 29647, Start Num: 57

Candidate Starts for Clautastrophe_33:

(Start: 57 @30387 has 69 MA's), (65, 30363), (71, 30327), (88, 30237), (124, 30081), (135, 30012), (140, 29991), (158, 29889), (162, 29871), (164, 29865), (165, 29859), (189, 29781), (204, 29718), (211, 29688),

Gene: ClubL_137 Start: 74712, Stop: 75419, Start Num: 55

Candidate Starts for ClubL_137:

(Start: 55 @74712 has 21 MA's), (76, 74820), (84, 74844), (96, 74892), (211, 75378),

Gene: Colossa_109 Start: 57884, Stop: 58597, Start Num: 61

Candidate Starts for Colossa_109:

(18, 57734), (51, 57845), (Start: 53 @57854 has 5 MA's), (Start: 57 @57878 has 69 MA's), (Start: 61 @57884 has 20 MA's), (70, 57929), (82, 58004), (103, 58109), (105, 58115), (106, 58118), (112, 58136), (146, 58286), (150, 58307), (179, 58409), (211, 58538),

Gene: Concombres_3 Start: 473, Stop: 1339, Start Num: 26

Candidate Starts for Concombres_3:

(Start: 26 @473 has 109 MA's), (Start: 38 @512 has 1 MA's), (62, 590), (67, 608), (70, 629), (80, 695), (91, 749), (102, 833), (104, 839), (106, 845), (127, 908), (159, 1100), (165, 1127), (174, 1160), (184, 1190), (210, 1295),

Gene: Confidence_62 Start: 41352, Stop: 42137, Start Num: 50

Candidate Starts for Confidence_62:

(11, 41211), (39, 41322), (Start: 50 @41352 has 22 MA's), (73, 41469), (74, 41475), (134, 41769), (138, 41787), (150, 41868), (151, 41871),

Gene: Cosmo_58 Start: 41518, Stop: 40769, Start Num: 53

Candidate Starts for Cosmo_58:

(6, 41755), (7, 41743), (8, 41707), (13, 41662), (17, 41638), (40, 41554), (Start: 53 @41518 has 5 MA's), (62, 41479), (69, 41446), (Start: 72 @41419 has 1 MA's), (74, 41404), (78, 41380), (105, 41212), (109, 41197), (128, 41140), (151, 41038), (165, 40981), (168, 40969), (194, 40888), (201, 40858), (203, 40846), (209, 40819), (211, 40810), (212, 40804), (220, 40777),

Gene: Crossroads_35 Start: 30126, Stop: 29380, Start Num: 57

Candidate Starts for Crossroads_35:

(42, 30177), (Start: 57 @30126 has 69 MA's), (Start: 63 @30108 has 2 MA's), (97, 29901), (103, 29868), (121, 29829), (128, 29802), (132, 29769), (135, 29751), (154, 29643), (158, 29628), (160, 29622), (162, 29610), (164, 29604), (165, 29598), (166, 29595), (184, 29535), (194, 29505), (201, 29475), (214, 29415), (216, 29406), (219, 29397),

Gene: Cucurbita_138 Start: 76451, Stop: 77158, Start Num: 55

Candidate Starts for Cucurbita_138:

(Start: 55 @76451 has 21 MA's), (76, 76559), (84, 76583), (96, 76631), (141, 76835), (211, 77117),

Gene: Culver_136 Start: 74454, Stop: 75161, Start Num: 55

Candidate Starts for Culver_136:

(Start: 55 @74454 has 21 MA's), (76, 74562), (84, 74586), (96, 74634), (141, 74838), (152, 74898), (211, 75120),

Gene: DHan_36 Start: 30039, Stop: 29293, Start Num: 57

Candidate Starts for DHan_36:

(Start: 57 @30039 has 69 MA's), (97, 29814), (103, 29781), (121, 29742), (128, 29715), (132, 29682), (135, 29664), (154, 29556), (158, 29541), (160, 29535), (162, 29523), (164, 29517), (165, 29511), (166, 29508), (184, 29448), (194, 29418), (201, 29388), (214, 29328), (216, 29319), (219, 29310),

Gene: DTDevon_3 Start: 473, Stop: 1339, Start Num: 26

Candidate Starts for DTDevon_3:

(Start: 26 @473 has 109 MA's), (Start: 38 @512 has 1 MA's), (62, 590), (67, 608), (70, 629), (74, 665), (80, 695), (91, 749), (102, 833), (104, 839), (106, 845), (127, 908), (159, 1100), (165, 1127), (174, 1160), (184, 1190), (209, 1292), (210, 1295),

Gene: DanBing_35 Start: 29943, Stop: 29197, Start Num: 57

Candidate Starts for DanBing_35:

(Start: 57 @29943 has 69 MA's), (97, 29718), (103, 29685), (121, 29646), (128, 29619), (132, 29586), (135, 29568), (154, 29460), (158, 29445), (160, 29439), (162, 29427), (164, 29421), (165, 29415), (166, 29412), (184, 29352), (194, 29322), (201, 29292), (214, 29232), (216, 29223), (219, 29214),

Gene: Dandelion_2 Start: 473, Stop: 1339, Start Num: 26

Candidate Starts for Dandelion_2:

(Start: 26 @473 has 109 MA's), (Start: 38 @512 has 1 MA's), (62, 590), (67, 608), (70, 629), (74, 665), (80, 695), (91, 749), (102, 833), (104, 839), (106, 845), (127, 908), (159, 1100), (165, 1127), (174, 1160), (184, 1190), (210, 1295),

Gene: Daredevil_89 Start: 61004, Stop: 61684, Start Num: 57

Candidate Starts for Daredevil_89:

(Start: 57 @61004 has 69 MA's), (73, 61088), (75, 61100), (76, 61112), (108, 61253), (156, 61454), (177, 61529),

Gene: DatBoi_95 Start: 64460, Stop: 65134, Start Num: 59

Candidate Starts for DatBoi_95:

(Start: 59 @64460 has 12 MA's), (73, 64538), (76, 64562), (94, 64625), (144, 64844), (150, 64880), (153, 64892), (188, 65012), (190, 65018),

Gene: DeejaClivia_3 Start: 477, Stop: 1343, Start Num: 26

Candidate Starts for DeejaClivia_3:

(Start: 26 @477 has 109 MA's), (Start: 38 @516 has 1 MA's), (62, 594), (67, 612), (70, 633), (74, 669), (80, 699), (91, 753), (102, 837), (104, 843), (106, 849), (123, 897), (127, 912), (159, 1104), (165, 1131), (174, 1164), (184, 1194), (210, 1299),

Gene: Delylah_3 Start: 473, Stop: 1339, Start Num: 26

Candidate Starts for Delylah_3:

(Start: 26 @473 has 109 MA's), (Start: 38 @512 has 1 MA's), (62, 590), (67, 608), (70, 629), (74, 665), (80, 695), (91, 749), (102, 833), (104, 839), (106, 845), (127, 908), (159, 1100), (165, 1127), (174, 1160), (184, 1190), (210, 1295), (211, 1301),

Gene: Demodog_3 Start: 473, Stop: 1339, Start Num: 26

Candidate Starts for Demodog_3:

(Start: 26 @473 has 109 MA's), (Start: 38 @512 has 1 MA's), (62, 590), (67, 608), (70, 629), (91, 749), (102, 833), (104, 839), (106, 845), (127, 908), (159, 1100), (165, 1127), (174, 1160), (184, 1190), (210, 1295),

Gene: Derek_3 Start: 473, Stop: 1339, Start Num: 26

Candidate Starts for Derek_3:

(Start: 26 @473 has 109 MA's), (Start: 38 @512 has 1 MA's), (62, 590), (67, 608), (70, 629), (74, 665), (80, 695), (91, 749), (102, 833), (104, 839), (106, 845), (127, 908), (159, 1100), (165, 1127), (174, 1160), (184, 1190), (209, 1292), (210, 1295),

Gene: Dessert_3 Start: 477, Stop: 1343, Start Num: 26

Candidate Starts for Dessert_3:

(Start: 26 @477 has 109 MA's), (Start: 38 @516 has 1 MA's), (62, 594), (67, 612), (70, 633), (74, 669), (80, 699), (91, 753), (102, 837), (104, 843), (106, 849), (127, 912), (159, 1104), (165, 1131), (174, 1164), (184, 1194), (209, 1296), (210, 1299),

Gene: Dietrick_3 Start: 473, Stop: 1339, Start Num: 26

Candidate Starts for Dietrick_3:

(Start: 26 @473 has 109 MA's), (Start: 38 @512 has 1 MA's), (62, 590), (67, 608), (70, 629), (74, 665), (80, 695), (91, 749), (102, 833), (104, 839), (106, 845), (127, 908), (159, 1100), (165, 1127), (174, 1160), (184, 1190), (209, 1292), (210, 1295),

Gene: Diminimus_48 Start: 35927, Stop: 35130, Start Num: 47

Candidate Starts for Diminimus_48:

(Start: 47 @35927 has 22 MA's), (70, 35843), (73, 35813), (74, 35807), (91, 35711), (94, 35681), (102, 35627), (111, 35594), (143, 35438), (147, 35411), (148, 35408), (159, 35366), (165, 35339), (182, 35285), (194, 35246), (197, 35231), (211, 35168), (218, 35138),

Gene: DirkDirk_32 Start: 28983, Stop: 28231, Start Num: 57

Candidate Starts for DirkDirk_32:

(Start: 57 @28983 has 69 MA's), (Start: 61 @28977 has 20 MA's), (91, 28815), (97, 28761), (99, 28752), (103, 28728), (106, 28719), (121, 28689), (128, 28662), (132, 28629), (135, 28611), (151, 28515), (152, 28509), (154, 28503), (158, 28488), (162, 28470), (164, 28464), (165, 28458), (184, 28395), (204, 28317), (211, 28287), (220, 28254),

Gene: DirtyBoi_59 Start: 38234, Stop: 39019, Start Num: 50

Candidate Starts for DirtyBoi_59:

(Start: 50 @38234 has 22 MA's), (70, 38321), (73, 38351), (74, 38357), (97, 38489), (124, 38588), (128, 38606), (134, 38651), (138, 38669), (150, 38750), (151, 38753), (204, 38951),

Gene: Dmitri_56 Start: 40718, Stop: 41503, Start Num: 50

Candidate Starts for Dmitri_56:

(10, 40565), (11, 40574), (34, 40676), (39, 40685), (Start: 50 @40718 has 22 MA's), (70, 40805), (73, 40835), (74, 40841), (97, 40973), (124, 41072), (128, 41090), (134, 41135), (138, 41153), (150, 41234), (151, 41237), (152, 41243), (204, 41435),

Gene: Dodo_222 Start: 120518, Stop: 121252, Start Num: 55

Candidate Starts for Dodo_222:

(Start: 55 @120518 has 21 MA's), (94, 120713), (103, 120770), (107, 120785), (119, 120809), (128, 120842), (133, 120884), (136, 120899), (156, 121010), (165, 121046), (207, 121196),

Gene: Douge_32 Start: 28983, Stop: 28246, Start Num: 59

Candidate Starts for Douge_32:

(3, 29373), (45, 29037), (46, 29028), (Start: 59 @28983 has 12 MA's), (Start: 63 @28968 has 2 MA's), (65, 28962), (86, 28842), (105, 28722), (116, 28698), (124, 28680), (128, 28662), (135, 28611), (154, 28503), (158, 28488), (162, 28470), (164, 28464), (165, 28458), (178, 28410),

Gene: Douzhi_32 Start: 29088, Stop: 28351, Start Num: 59

Candidate Starts for Douzhi_32:

(3, 29478), (45, 29142), (46, 29133), (Start: 59 @29088 has 12 MA's), (Start: 63 @29073 has 2 MA's), (65, 29067), (86, 28947), (105, 28827), (116, 28803), (124, 28785), (128, 28767), (135, 28716), (154, 28608), (158, 28593), (162, 28575), (164, 28569), (165, 28563),

Gene: DrSeegs_35 Start: 30126, Stop: 29380, Start Num: 57

Candidate Starts for DrSeegs_35:

(Start: 57 @30126 has 69 MA's), (Start: 63 @30108 has 2 MA's), (97, 29901), (103, 29868), (121, 29829), (128, 29802), (132, 29769), (135, 29751), (154, 29643), (158, 29628), (160, 29622), (162, 29610), (164, 29604), (165, 29598), (166, 29595), (184, 29535), (194, 29505), (201, 29475), (214, 29415), (216, 29406), (219, 29397),

Gene: Drazdys_3 Start: 473, Stop: 1339, Start Num: 26

Candidate Starts for Drazdys_3:

(Start: 26 @473 has 109 MA's), (Start: 38 @512 has 1 MA's), (62, 590), (67, 608), (70, 629), (74, 665), (80, 695), (91, 749), (102, 833), (104, 839), (106, 845), (127, 908), (159, 1100), (165, 1127), (174, 1160), (184, 1190), (209, 1292), (210, 1295),

Gene: Duckfeet_3 Start: 456, Stop: 1322, Start Num: 26

Candidate Starts for Duckfeet_3:

(Start: 26 @456 has 109 MA's), (Start: 38 @495 has 1 MA's), (62, 573), (67, 591), (70, 612), (74, 648), (80, 678), (91, 732), (102, 816), (104, 822), (106, 828), (123, 876), (127, 891), (129, 903), (159, 1083), (165, 1110), (174, 1143), (184, 1173), (209, 1275), (210, 1278),

Gene: Dulcita_48 Start: 35928, Stop: 35131, Start Num: 47

Candidate Starts for Dulcita_48:

(Start: 47 @35928 has 22 MA's), (70, 35844), (73, 35814), (74, 35808), (91, 35712), (94, 35682), (102, 35628), (111, 35595), (143, 35439), (147, 35412), (148, 35409), (159, 35367), (165, 35340), (182, 35286), (194, 35247), (197, 35232), (211, 35169), (218, 35139),

Gene: DuncansLeg_33 Start: 30374, Stop: 29634, Start Num: 57

Candidate Starts for DuncansLeg_33:

(Start: 57 @30374 has 69 MA's), (65, 30350), (71, 30314), (88, 30224), (124, 30068), (135, 29999), (140, 29978), (153, 29894), (158, 29876), (162, 29858), (164, 29852), (165, 29846), (189, 29768), (204, 29705), (211, 29675),

Gene: DunneganBoMo_181 Start: 133952, Stop: 134626, Start Num: 54

Candidate Starts for DunneganBoMo_181:

(Start: 54 @133952 has 4 MA's), (65, 133994), (73, 134054), (96, 134165), (107, 134225), (147, 134381), (164, 134447), (201, 134558),

Gene: Dusty_134 Start: 74690, Stop: 75397, Start Num: 55

Candidate Starts for Dusty_134:

(Start: 55 @74690 has 21 MA's), (76, 74798), (84, 74822), (96, 74870), (141, 75074), (152, 75134), (211, 75356),

Gene: DyoEdafos_33 Start: 29180, Stop: 28443, Start Num: 59

Candidate Starts for DyoEdafos_33:

(Start: 59 @29180 has 12 MA's), (Start: 63 @29165 has 2 MA's), (65, 29159), (70, 29129), (86, 29039), (96, 28970), (103, 28925), (105, 28919), (116, 28895), (124, 28877), (128, 28859), (135, 28808), (154, 28700), (158, 28685), (162, 28667), (164, 28661), (165, 28655), (178, 28607), (194, 28562),

Gene: EasyJones_3 Start: 456, Stop: 1322, Start Num: 26

Candidate Starts for EasyJones_3:

(Start: 26 @456 has 109 MA's), (Start: 38 @495 has 1 MA's), (62, 573), (67, 591), (70, 612), (74, 648), (80, 678), (91, 732), (102, 816), (104, 822), (106, 828), (123, 876), (127, 891), (159, 1083), (165, 1110), (174, 1143), (184, 1173), (209, 1275), (210, 1278),

Gene: EggyFarm_5 Start: 1066, Stop: 1932, Start Num: 26

Candidate Starts for EggyFarm_5:

(Start: 26 @1066 has 109 MA's), (Start: 38 @1105 has 1 MA's), (62, 1183), (67, 1201), (70, 1222), (74, 1258), (80, 1288), (91, 1342), (102, 1426), (104, 1432), (106, 1438), (127, 1501), (159, 1693), (165, 1720), (174, 1753), (184, 1783), (210, 1888),

Gene: EhyElimayoE_42 Start: 24210, Stop: 23518, Start Num: 61

Candidate Starts for EhyElimayoE_42:

(Start: 61 @24210 has 20 MA's), (67, 24186), (Start: 72 @24144 has 1 MA's), (74, 24129), (87, 24075), (95, 24048), (105, 23988), (134, 23874), (164, 23733), (177, 23682), (185, 23652), (191, 23637), (204, 23577), (207, 23568),

Gene: Ellewin_181 Start: 134030, Stop: 134704, Start Num: 54

Candidate Starts for Ellewin_181:

(Start: 54 @134030 has 4 MA's), (65, 134072), (73, 134132), (96, 134243), (107, 134303), (147, 134459), (164, 134525), (201, 134636),

Gene: Ellson_33 Start: 30351, Stop: 29611, Start Num: 57

Candidate Starts for Ellson_33:

(44, 30405), (Start: 57 @30351 has 69 MA's), (65, 30327), (71, 30291), (88, 30201), (124, 30045), (135, 29976), (140, 29955), (153, 29871), (158, 29853), (162, 29835), (164, 29829), (165, 29823), (204, 29682),

Gene: EmmaElysia_3 Start: 473, Stop: 1339, Start Num: 26

Candidate Starts for EmmaElysia_3:

(Start: 26 @473 has 109 MA's), (Start: 38 @512 has 1 MA's), (62, 590), (67, 608), (70, 629), (74, 665), (80, 695), (91, 749), (102, 833), (104, 839), (106, 845), (127, 908), (159, 1100), (165, 1127), (174, 1160), (184, 1190), (209, 1292), (210, 1295),

Gene: Emmetator_185 Start: 134158, Stop: 134832, Start Num: 54

Candidate Starts for Emmetator_185:

(Start: 54 @134158 has 4 MA's), (65, 134200), (73, 134260), (96, 134371), (107, 134431), (147, 134587), (164, 134653), (201, 134764),

Gene: Enceladus_32 Start: 28967, Stop: 28215, Start Num: 57

Candidate Starts for Enceladus_32:

(Start: 57 @28967 has 69 MA's), (Start: 61 @28961 has 20 MA's), (91, 28799), (97, 28745), (99, 28736), (103, 28712), (106, 28703), (121, 28673), (128, 28646), (132, 28613), (135, 28595), (151, 28499), (152, 28493), (154, 28487), (158, 28472), (162, 28454), (164, 28448), (165, 28442), (184, 28379), (204, 28301), (211, 28271), (220, 28238),

Gene: Engineer_139 Start: 76111, Stop: 76818, Start Num: 55

Candidate Starts for Engineer_139:

(Start: 55 @76111 has 21 MA's), (76, 76219), (84, 76243), (96, 76291), (141, 76495), (152, 76555), (211, 76777),

Gene: EniyanLRS_55 Start: 41216, Stop: 40467, Start Num: 53

Candidate Starts for EniyanLRS_55:

(6, 41453), (7, 41441), (8, 41405), (13, 41360), (17, 41336), (40, 41252), (Start: 53 @41216 has 5 MA's), (62, 41177), (69, 41144), (Start: 72 @41117 has 1 MA's), (74, 41102), (78, 41078), (105, 40910), (109, 40895), (128, 40838), (151, 40736), (165, 40679), (168, 40667), (194, 40586), (201, 40556), (203, 40544), (209, 40517), (211, 40508), (212, 40502), (220, 40475),

Gene: Erasmago_215 Start: 115269, Stop: 116006, Start Num: 55

Candidate Starts for Erasmago_215:

(23, 115152), (37, 115200), (Start: 55 @115269 has 21 MA's), (93, 115464), (103, 115524), (107, 115539), (133, 115638), (136, 115653), (151, 115743), (156, 115764), (165, 115800), (199, 115914), (207, 115950),

Gene: ErnieJ_3 Start: 473, Stop: 1339, Start Num: 26

Candidate Starts for ErnieJ_3:

(Start: 26 @473 has 109 MA's), (Start: 38 @512 has 1 MA's), (62, 590), (67, 608), (70, 629), (74, 665), (80, 695), (91, 749), (102, 833), (104, 839), (106, 845), (127, 908), (159, 1100), (165, 1127), (174, 1160), (184, 1190), (209, 1292), (210, 1295),

Gene: Essence_3 Start: 473, Stop: 1339, Start Num: 26

Candidate Starts for Essence_3:

(Start: 26 @473 has 109 MA's), (Start: 38 @512 has 1 MA's), (62, 590), (67, 608), (70, 629), (74, 665), (80, 695), (91, 749), (102, 833), (104, 839), (106, 845), (127, 908), (159, 1100), (165, 1127), (174, 1160), (184, 1190), (209, 1292), (210, 1295),

Gene: Estes_56 Start: 38134, Stop: 37334, Start Num: 47

Candidate Starts for Estes_56:

(Start: 47 @38134 has 22 MA's), (73, 38017), (74, 38011), (98, 37855), (102, 37831), (104, 37825), (111, 37798), (142, 37645), (147, 37615), (148, 37612), (165, 37543), (171, 37519), (172, 37516), (174, 37510), (197, 37435), (209, 37381), (211, 37372), (218, 37342),

Gene: Faith1_35 Start: 30126, Stop: 29380, Start Num: 57

Candidate Starts for Faith1_35:

(Start: 57 @30126 has 69 MA's), (Start: 63 @30108 has 2 MA's), (97, 29901), (103, 29868), (121, 29829), (128, 29802), (132, 29769), (135, 29751), (154, 29643), (158, 29628), (160, 29622), (162, 29610), (164, 29604), (165, 29598), (166, 29595), (184, 29535), (194, 29505), (201, 29475), (214, 29415), (216, 29406), (219, 29397),

Gene: FarmResident_32 Start: 29027, Stop: 28290, Start Num: 59

Candidate Starts for FarmResident_32:

(3, 29417), (45, 29081), (46, 29072), (Start: 59 @29027 has 12 MA's), (Start: 63 @29012 has 2 MA's), (65, 29006), (86, 28886), (105, 28766), (116, 28742), (124, 28724), (128, 28706), (135, 28655), (154, 28547), (158, 28532), (162, 28514), (164, 28508), (165, 28502), (178, 28454),

Gene: Fenry_64 Start: 42529, Stop: 43314, Start Num: 50

Candidate Starts for Fenry_64:

(10, 42379), (11, 42388), (39, 42499), (Start: 50 @42529 has 22 MA's), (68, 42607), (73, 42646), (97, 42784), (129, 42907), (134, 42946), (138, 42964), (150, 43045), (151, 43048), (164, 43099), (204, 43246),

Gene: Finemlucis_35 Start: 30402, Stop: 29656, Start Num: 57

Candidate Starts for Finemlucis_35:

(Start: 57 @30402 has 69 MA's), (Start: 63 @30384 has 2 MA's), (97, 30177), (103, 30144), (121, 30105), (128, 30078), (132, 30045), (135, 30027), (154, 29919), (158, 29904), (160, 29898), (162, 29886), (164, 29880), (165, 29874), (166, 29871), (184, 29811), (194, 29781), (201, 29751), (214, 29691), (216, 29682), (219, 29673),

Gene: Finnry_33 Start: 30390, Stop: 29650, Start Num: 57

Candidate Starts for Finnry_33:

(Start: 57 @30390 has 69 MA's), (65, 30366), (71, 30330), (88, 30240), (124, 30084), (135, 30015), (140, 29994), (158, 29892), (162, 29874), (164, 29868), (165, 29862), (189, 29784), (204, 29721), (211, 29691),

Gene: Fixie_3 Start: 456, Stop: 1322, Start Num: 26

Candidate Starts for Fixie_3:

(Start: 26 @456 has 109 MA's), (Start: 38 @495 has 1 MA's), (62, 573), (67, 591), (70, 612), (74, 648), (80, 678), (91, 732), (102, 816), (104, 822), (106, 828), (127, 891), (159, 1083), (165, 1110), (174, 1143), (184, 1173), (209, 1275), (210, 1278),

Gene: Flabslab_3 Start: 473, Stop: 1339, Start Num: 26

Candidate Starts for Flabslab_3:

(Start: 26 @473 has 109 MA's), (Start: 38 @512 has 1 MA's), (62, 590), (67, 608), (70, 629), (74, 665), (80, 695), (91, 749), (102, 833), (104, 839), (106, 845), (127, 908), (159, 1100), (165, 1127), (174, 1160), (184, 1190), (209, 1292), (210, 1295),

Gene: FloraSnap32_188 Start: 130772, Stop: 131422, Start Num: 59

Candidate Starts for FloraSnap32_188:

(51, 130736), (Start: 59 @130772 has 12 MA's), (73, 130853), (78, 130883), (107, 131024), (147, 131180), (164, 131246), (165, 131252), (194, 131327), (207, 131384), (212, 131411),

Gene: Fludd_3 Start: 459, Stop: 1325, Start Num: 26

Candidate Starts for Fludd_3:

(Start: 26 @459 has 109 MA's), (Start: 38 @498 has 1 MA's), (62, 576), (67, 594), (70, 615), (74, 651), (80, 681), (91, 735), (102, 819), (104, 825), (106, 831), (127, 894), (159, 1086), (165, 1113), (174, 1146), (184, 1176), (209, 1278), (210, 1281),

Gene: Frankenweenie_45 Start: 24877, Stop: 24248, Start Num: 72

Candidate Starts for Frankenweenie_45:

(Start: 61 @24943 has 20 MA's), (67, 24919), (Start: 72 @24877 has 1 MA's), (73, 24868), (83, 24820), (87, 24808), (130, 24634), (151, 24517), (163, 24469), (164, 24466), (177, 24415), (191, 24370), (211, 24280),

Gene: FrayBell_3 Start: 473, Stop: 1339, Start Num: 26

Candidate Starts for FrayBell_3:

(Start: 26 @473 has 109 MA's), (Start: 38 @512 has 1 MA's), (62, 590), (67, 608), (70, 629), (74, 665), (80, 695), (91, 749), (102, 833), (104, 839), (106, 845), (127, 908), (150, 1067), (159, 1100), (165, 1127), (174, 1160), (184, 1190), (209, 1292), (210, 1295),

Gene: FreakyGoo_48 Start: 35928, Stop: 35131, Start Num: 47

Candidate Starts for FreakyGoo_48:

(Start: 47 @35928 has 22 MA's), (70, 35844), (73, 35814), (74, 35808), (91, 35712), (94, 35682), (102, 35628), (111, 35595), (143, 35439), (147, 35412), (148, 35409), (159, 35367), (165, 35340), (182, 35286), (194, 35247), (197, 35232), (211, 35169), (218, 35139),

Gene: FrostedClock_192 Start: 131809, Stop: 132459, Start Num: 58

Candidate Starts for FrostedClock_192:

(Start: 58 @131809 has 5 MA's), (73, 131890), (78, 131920), (106, 132055), (107, 132061), (147, 132217), (164, 132283), (165, 132289), (194, 132364), (207, 132421), (212, 132448),

Gene: Fudan_112 Start: 61607, Stop: 62296, Start Num: 61

Candidate Starts for Fudan_112:

(Start: 61 @61607 has 20 MA's), (67, 61631), (73, 61682), (97, 61805), (145, 62012), (165, 62105), (169, 62114), (191, 62186), (195, 62201), (201, 62228),

Gene: Gabriel_3 Start: 473, Stop: 1339, Start Num: 26

Candidate Starts for Gabriel_3:

(Start: 26 @473 has 109 MA's), (Start: 38 @512 has 1 MA's), (62, 590), (67, 608), (70, 629), (74, 665), (80, 695), (91, 749), (102, 833), (104, 839), (106, 845), (127, 908), (159, 1100), (165, 1127), (174, 1160), (184, 1190), (209, 1292), (210, 1295),

Gene: Gabriela_35 Start: 30388, Stop: 29642, Start Num: 57

Candidate Starts for Gabriela_35:

(Start: 57 @30388 has 69 MA's), (Start: 63 @30370 has 2 MA's), (97, 30163), (103, 30130), (121, 30091), (128, 30064), (132, 30031), (135, 30013), (154, 29905), (158, 29890), (160, 29884), (162, 29872), (164, 29866), (165, 29860), (166, 29857), (184, 29797), (194, 29767), (201, 29737), (214, 29677), (216, 29668), (219, 29659),

Gene: Gambino_70 Start: 44110, Stop: 44895, Start Num: 50

Candidate Starts for Gambino_70:

(39, 44080), (Start: 50 @44110 has 22 MA's), (73, 44227), (74, 44233), (96, 44353), (97, 44365), (134, 44527), (138, 44545), (150, 44626), (151, 44629), (204, 44827),

Gene: Gamgam_3 Start: 477, Stop: 1343, Start Num: 26

Candidate Starts for Gamgam_3:

(Start: 26 @477 has 109 MA's), (Start: 38 @516 has 1 MA's), (62, 594), (67, 612), (70, 633), (74, 669), (80, 699), (91, 753), (102, 837), (104, 843), (106, 849), (127, 912), (159, 1104), (165, 1131), (174, 1164), (184, 1194), (209, 1296), (210, 1299),

Gene: Gardann_35 Start: 30128, Stop: 29382, Start Num: 57

Candidate Starts for Gardann_35:

(Start: 57 @30128 has 69 MA's), (Start: 63 @30110 has 2 MA's), (77, 30017), (97, 29903), (103, 29870), (121, 29831), (128, 29804), (132, 29771), (135, 29753), (154, 29645), (158, 29630), (160, 29624), (162, 29612), (164, 29606), (165, 29600), (166, 29597), (184, 29537), (194, 29507), (201, 29477), (214, 29417), (216, 29408), (219, 29399),

Gene: GardenSalsa_56 Start: 38232, Stop: 37432, Start Num: 47

Candidate Starts for GardenSalsa_56:

(9, 38379), (Start: 47 @38232 has 22 MA's), (73, 38115), (74, 38109), (96, 37971), (98, 37953), (104, 37923), (111, 37896), (124, 37866), (134, 37803), (143, 37740), (147, 37713), (148, 37710), (159, 37668), (165, 37641), (167, 37632), (174, 37608), (183, 37581), (195, 37545), (197, 37533), (209, 37479), (211, 37470), (218, 37440),

Gene: Garnacho_107 Start: 61225, Stop: 61914, Start Num: 61

Candidate Starts for Garnacho_107:

(Start: 61 @61225 has 20 MA's), (67, 61249), (70, 61270), (73, 61300), (74, 61306), (75, 61312), (97, 61423), (165, 61723), (185, 61789), (191, 61804),

Gene: Geeche_136 Start: 75093, Stop: 75620, Start Num: 96

Candidate Starts for Geeche_136:

(Start: 55 @74913 has 21 MA's), (76, 75021), (84, 75045), (96, 75093), (141, 75297), (152, 75357), (211, 75579),

Gene: GenevaB15_54 Start: 37868, Stop: 37068, Start Num: 47

Candidate Starts for GenevaB15_54:

(Start: 47 @37868 has 22 MA's), (73, 37751), (74, 37745), (98, 37589), (102, 37565), (104, 37559), (106, 37553), (111, 37532), (147, 37349), (148, 37346), (165, 37277), (174, 37244), (182, 37223), (209, 37115), (211, 37106), (218, 37076),

Gene: Ghost_3 Start: 477, Stop: 1343, Start Num: 26

Candidate Starts for Ghost_3:

(Start: 26 @477 has 109 MA's), (Start: 38 @516 has 1 MA's), (62, 594), (67, 612), (70, 633), (74, 669), (80, 699), (91, 753), (102, 837), (104, 843), (106, 849), (127, 912), (159, 1104), (165, 1131), (174, 1164), (184, 1194), (209, 1296), (210, 1299),

Gene: GiJojo_105 Start: 62109, Stop: 62801, Start Num: 61

Candidate Starts for GiJojo_105:

(Start: 38 @62031 has 1 MA's), (Start: 61 @62109 has 20 MA's), (70, 62154), (73, 62184), (74, 62190), (75, 62196), (92, 62274), (96, 62295), (103, 62340), (145, 62514), (165, 62607), (191, 62688),

Gene: Glaske16_48 Start: 35927, Stop: 35130, Start Num: 47

Candidate Starts for Glaske16_48:

(Start: 47 @35927 has 22 MA's), (70, 35843), (73, 35813), (74, 35807), (91, 35711), (94, 35681), (102, 35627), (111, 35594), (143, 35438), (147, 35411), (148, 35408), (159, 35366), (165, 35339), (182, 35285), (194, 35246), (197, 35231), (211, 35168), (218, 35138),

Gene: GlutenPhree_3 Start: 477, Stop: 1343, Start Num: 26

Candidate Starts for GlutenPhree_3:

(Start: 26 @477 has 109 MA's), (Start: 38 @516 has 1 MA's), (62, 594), (67, 612), (70, 633), (74, 669), (80, 699), (91, 753), (102, 837), (104, 843), (106, 849), (127, 912), (159, 1104), (165, 1131), (174, 1164), (184, 1194), (209, 1296), (210, 1299),

Gene: GoldenEssence_178 Start: 126151, Stop: 126801, Start Num: 58

Candidate Starts for GoldenEssence_178:

(Start: 58 @126151 has 5 MA's), (73, 126232), (78, 126262), (107, 126403), (147, 126559), (164, 126625), (165, 126631), (194, 126706), (207, 126763), (212, 126790),

Gene: Grasshills_5 Start: 1066, Stop: 1932, Start Num: 26

Candidate Starts for Grasshills_5:

(Start: 26 @1066 has 109 MA's), (Start: 38 @1105 has 1 MA's), (62, 1183), (67, 1201), (70, 1222), (74, 1258), (80, 1288), (91, 1342), (102, 1426), (104, 1432), (106, 1438), (127, 1501), (159, 1693), (165, 1720), (174, 1753), (184, 1783), (210, 1888),

Gene: Greely_3 Start: 1065, Stop: 1916, Start Num: 29

Candidate Starts for Greely_3:

(12, 984), (20, 1026), (Start: 29 @1065 has 2 MA's), (Start: 57 @1149 has 69 MA's), (Start: 64 @1170 has 3 MA's), (68, 1194), (74, 1239), (77, 1260), (81, 1275), (95, 1365), (102, 1416), (110, 1449), (123, 1476), (126, 1485), (143, 1593), (159, 1665), (165, 1692), (170, 1713), (171, 1716), (172, 1719), (187, 1764), (195, 1788), (217, 1887), (222, 1908),

Gene: Grungle_3 Start: 477, Stop: 1343, Start Num: 26

Candidate Starts for Grungle_3:

(Start: 26 @477 has 109 MA's), (Start: 38 @516 has 1 MA's), (62, 594), (67, 612), (70, 633), (74, 669), (80, 699), (91, 753), (102, 837), (104, 843), (106, 849), (127, 912), (159, 1104), (165, 1131), (174, 1164), (184, 1194), (210, 1299),

Gene: Guacamole_63 Start: 41500, Stop: 42285, Start Num: 50

Candidate Starts for Guacamole_63:

(1, 40993), (2, 41143), (4, 41209), (5, 41245), (10, 41350), (11, 41359), (39, 41470), (Start: 50 @41500 has 22 MA's), (73, 41617), (74, 41623), (97, 41755), (105, 41794), (134, 41917), (138, 41935), (150, 42016), (151, 42019), (164, 42070), (204, 42217),

Gene: GuuelaD_35 Start: 30160, Stop: 29414, Start Num: 57

Candidate Starts for GuuelaD_35:

(41, 30214), (Start: 57 @30160 has 69 MA's), (Start: 63 @30142 has 2 MA's), (97, 29935), (103, 29902), (121, 29863), (128, 29836), (132, 29803), (135, 29785), (154, 29677), (158, 29662), (160, 29656), (162, 29644), (164, 29638), (165, 29632), (166, 29629), (184, 29569), (194, 29539), (201, 29509), (214, 29449), (216, 29440), (219, 29431),

Gene: Guwapp_3 Start: 473, Stop: 1339, Start Num: 26

Candidate Starts for Guwapp_3:

(Start: 26 @473 has 109 MA's), (Start: 38 @512 has 1 MA's), (62, 590), (67, 608), (70, 629), (74, 665), (80, 695), (91, 749), (102, 833), (104, 839), (106, 845), (127, 908), (159, 1100), (165, 1127), (174, 1160), (184, 1190), (209, 1292), (210, 1295),

Gene: Hafay_35 Start: 30159, Stop: 29413, Start Num: 57

Candidate Starts for Hafay_35:

(Start: 57 @30159 has 69 MA's), (Start: 63 @30141 has 2 MA's), (84, 30024), (86, 30015), (97, 29934), (103, 29901), (121, 29862), (128, 29835), (132, 29802), (135, 29784), (154, 29676), (158, 29661), (160, 29655), (162, 29643), (164, 29637), (165, 29631), (166, 29628), (184, 29568), (194, 29538), (201, 29508), (214, 29448), (216, 29439), (219, 29430),

Gene: Halena_32 Start: 28994, Stop: 28242, Start Num: 57

Candidate Starts for Halena_32:

(Start: 57 @28994 has 69 MA's), (Start: 61 @28988 has 20 MA's), (91, 28826), (97, 28772), (103, 28739), (106, 28730), (121, 28700), (128, 28673), (132, 28640), (135, 28622), (152, 28520), (154, 28514), (158, 28499), (162, 28481), (164, 28475), (165, 28469), (184, 28406), (204, 28328), (211, 28298), (220, 28265),

Gene: Halldule_3 Start: 473, Stop: 1339, Start Num: 26

Candidate Starts for Halldule_3:

(Start: 26 @473 has 109 MA's), (Start: 38 @512 has 1 MA's), (62, 590), (67, 608), (70, 629), (74, 665), (80, 695), (91, 749), (102, 833), (104, 839), (106, 845), (123, 893), (127, 908), (159, 1100), (165, 1127), (174, 1160), (184, 1190), (210, 1295),

Gene: I3_3 Start: 475, Stop: 1341, Start Num: 26

Candidate Starts for I3_3:

(Start: 26 @475 has 109 MA's), (Start: 38 @514 has 1 MA's), (62, 592), (67, 610), (70, 631), (74, 667), (80, 697), (91, 751), (102, 835), (104, 841), (106, 847), (127, 910), (159, 1102), (165, 1129), (174, 1162), (184, 1192), (210, 1297),

Gene: IPhane7_47 Start: 35928, Stop: 35131, Start Num: 47

Candidate Starts for IPhane7_47:

(Start: 47 @35928 has 22 MA's), (70, 35844), (73, 35814), (74, 35808), (91, 35712), (94, 35682), (102, 35628), (111, 35595), (143, 35439), (147, 35412), (148, 35409), (159, 35367), (165, 35340), (182, 35286), (194, 35247), (197, 35232), (211, 35169), (218, 35139),

Gene: InigoMontoya_3 Start: 477, Stop: 1343, Start Num: 26

Candidate Starts for InigoMontoya_3:

(Start: 26 @477 has 109 MA's), (Start: 38 @516 has 1 MA's), (62, 594), (67, 612), (70, 633), (74, 669), (80, 699), (91, 753), (102, 837), (104, 843), (106, 849), (127, 912), (159, 1104), (165, 1131), (174, 1164), (184, 1194), (209, 1296), (210, 1299),

Gene: InterFolia_3 Start: 473, Stop: 1339, Start Num: 26

Candidate Starts for InterFolia_3:

(Start: 26 @473 has 109 MA's), (Start: 38 @512 has 1 MA's), (62, 590), (67, 608), (70, 629), (74, 665), (80, 695), (91, 749), (102, 833), (104, 839), (106, 845), (127, 908), (150, 1067), (159, 1100), (165, 1127), (174, 1160), (184, 1190), (209, 1292), (210, 1295),

Gene: Itos_35 Start: 30126, Stop: 29380, Start Num: 57

Candidate Starts for Itos_35:

(Start: 57 @30126 has 69 MA's), (Start: 63 @30108 has 2 MA's), (97, 29901), (103, 29868), (121, 29829), (128, 29802), (132, 29769), (135, 29751), (154, 29643), (158, 29628), (160, 29622), (162, 29610), (164, 29604), (165, 29598), (166, 29595), (184, 29535), (194, 29505), (201, 29475), (214, 29415), (216, 29406), (219, 29397),

Gene: Izel_48 Start: 35927, Stop: 35130, Start Num: 47

Candidate Starts for Izel_48:

(Start: 47 @35927 has 22 MA's), (70, 35843), (73, 35813), (74, 35807), (91, 35711), (94, 35681), (102, 35627), (111, 35594), (143, 35438), (147, 35411), (148, 35408), (159, 35366), (165, 35339), (182, 35285), (194, 35246), (197, 35231), (211, 35168), (218, 35138),

Gene: JPickles_3 Start: 477, Stop: 1343, Start Num: 26

Candidate Starts for JPickles_3:

(Start: 26 @477 has 109 MA's), (Start: 38 @516 has 1 MA's), (62, 594), (67, 612), (70, 633), (74, 669), (80, 699), (91, 753), (102, 837), (104, 843), (106, 849), (127, 912), (159, 1104), (165, 1131), (174, 1164), (184, 1194), (209, 1296), (210, 1299),

Gene: Jalammah_68 Start: 43432, Stop: 44217, Start Num: 50

Candidate Starts for Jalammah_68:

(39, 43402), (Start: 50 @43432 has 22 MA's), (73, 43549), (74, 43555), (97, 43687), (105, 43726), (134, 43849), (138, 43867), (150, 43948), (151, 43951), (164, 44002), (204, 44149),

Gene: Janiyra_3 Start: 456, Stop: 1322, Start Num: 26

Candidate Starts for Janiyra_3:

(Start: 26 @456 has 109 MA's), (Start: 38 @495 has 1 MA's), (62, 573), (67, 591), (70, 612), (74, 648), (80, 678), (91, 732), (102, 816), (104, 822), (106, 828), (127, 891), (159, 1083), (165, 1110), (174, 1143), (184, 1173), (209, 1275), (210, 1278),

Gene: JasperJr_63 Start: 41500, Stop: 42285, Start Num: 50

Candidate Starts for JasperJr_63:

(1, 40993), (2, 41143), (4, 41209), (5, 41245), (10, 41350), (11, 41359), (39, 41470), (Start: 50 @41500 has 22 MA's), (73, 41617), (74, 41623), (97, 41755), (105, 41794), (134, 41917), (138, 41935), (150, 42016), (151, 42019), (164, 42070), (204, 42217),

Gene: JayJay_3 Start: 477, Stop: 1343, Start Num: 26

Candidate Starts for JayJay_3:

(Start: 26 @477 has 109 MA's), (Start: 38 @516 has 1 MA's), (62, 594), (67, 612), (70, 633), (74, 669), (80, 699), (91, 753), (102, 837), (104, 843), (106, 849), (127, 912), (159, 1104), (165, 1131), (174, 1164), (184, 1194), (210, 1299),

Gene: Jaygup_3 Start: 473, Stop: 1339, Start Num: 26

Candidate Starts for Jaygup_3:

(Start: 26 @473 has 109 MA's), (Start: 38 @512 has 1 MA's), (62, 590), (67, 608), (70, 629), (74, 665), (80, 695), (91, 749), (102, 833), (104, 839), (106, 845), (127, 908), (159, 1100), (165, 1127), (174, 1160), (184, 1190), (209, 1292), (210, 1295),

Gene: Jedediah_3 Start: 477, Stop: 1343, Start Num: 26

Candidate Starts for Jedediah_3:

(Start: 26 @477 has 109 MA's), (Start: 38 @516 has 1 MA's), (62, 594), (67, 612), (70, 633), (74, 669), (80, 699), (91, 753), (102, 837), (104, 843), (106, 849), (127, 912), (159, 1104), (165, 1131), (174, 1164), (184, 1194), (209, 1296), (210, 1299),

Gene: Jemmno_3 Start: 477, Stop: 1343, Start Num: 26

Candidate Starts for Jemmno_3:

(Start: 26 @477 has 109 MA's), (Start: 38 @516 has 1 MA's), (62, 594), (67, 612), (70, 633), (74, 669), (80, 699), (91, 753), (102, 837), (104, 843), (106, 849), (127, 912), (159, 1104), (165, 1131), (174, 1164), (184, 1194), (209, 1296), (210, 1299),

Gene: Jezreel_3 Start: 473, Stop: 1339, Start Num: 26

Candidate Starts for Jezreel_3:

(Start: 26 @473 has 109 MA's), (Start: 38 @512 has 1 MA's), (62, 590), (67, 608), (70, 629), (74, 665), (80, 695), (91, 749), (102, 833), (104, 839), (106, 845), (127, 908), (159, 1100), (165, 1127), (174, 1160), (184, 1190), (209, 1292), (210, 1295),

Gene: JigglyPuff_3 Start: 470, Stop: 1336, Start Num: 26

Candidate Starts for JigglyPuff_3:

(Start: 26 @470 has 109 MA's), (Start: 38 @509 has 1 MA's), (62, 587), (67, 605), (70, 626), (74, 662), (80, 692), (91, 746), (102, 830), (104, 836), (106, 842), (127, 905), (159, 1097), (165, 1124), (174, 1157), (187, 1196), (191, 1208), (210, 1292),

Gene: Jobypre_33 Start: 30387, Stop: 29647, Start Num: 57

Candidate Starts for Jobypre_33:

(Start: 57 @30387 has 69 MA's), (65, 30363), (71, 30327), (88, 30237), (124, 30081), (135, 30012), (140, 29991), (158, 29889), (162, 29871), (164, 29865), (165, 29859), (189, 29781), (204, 29718), (211, 29688),

Gene: JoeDirt_32 Start: 28959, Stop: 28213, Start Num: 61

Candidate Starts for JoeDirt_32:

(Start: 57 @28965 has 69 MA's), (Start: 61 @28959 has 20 MA's), (91, 28797), (97, 28743), (99, 28734), (103, 28710), (106, 28701), (121, 28671), (128, 28644), (132, 28611), (135, 28593), (151, 28497), (152, 28491), (154, 28485), (158, 28470), (162, 28452), (164, 28446), (165, 28440), (184, 28377), (204, 28299), (211, 28269), (220, 28236),

Gene: JonJames_150 Start: 83739, Stop: 84446, Start Num: 60

Candidate Starts for JonJames_150:

(Start: 60 @83739 has 2 MA's), (66, 83760), (76, 83838), (80, 83853), (98, 83940), (137, 84090), (155, 84180), (209, 84393),

Gene: Jubie_33 Start: 30388, Stop: 29648, Start Num: 57

Candidate Starts for Jubie_33:

(Start: 57 @30388 has 69 MA's), (65, 30364), (71, 30328), (88, 30238), (124, 30082), (135, 30013), (140, 29992), (158, 29890), (162, 29872), (164, 29866), (165, 29860), (189, 29782), (204, 29719), (211, 29689),

Gene: JulietS_3 Start: 473, Stop: 1339, Start Num: 26

Candidate Starts for JulietS_3:

(Start: 26 @473 has 109 MA's), (Start: 38 @512 has 1 MA's), (62, 590), (67, 608), (70, 629), (74, 665), (80, 695), (91, 749), (102, 833), (104, 839), (106, 845), (127, 908), (159, 1100), (165, 1127), (174, 1160), (184, 1190), (210, 1295),

Gene: JustBecause_33 Start: 20081, Stop: 19389, Start Num: 61

Candidate Starts for JustBecause_33:

(16, 20231), (Start: 61 @20081 has 20 MA's), (62, 20075), (67, 20057), (Start: 72 @20015 has 1 MA's), (73, 20006), (87, 19946), (95, 19919), (130, 19772), (151, 19655), (164, 19604), (175, 19562), (177, 19553), (191, 19508), (204, 19448), (211, 19418),

Gene: KSunshine22_186 Start: 133047, Stop: 133721, Start Num: 54

Candidate Starts for KSunshine22_186:

(Start: 54 @133047 has 4 MA's), (73, 133149), (96, 133260), (106, 133314), (107, 133320), (147, 133476), (164, 133542), (201, 133653),

Gene: Kahlid_35 Start: 30131, Stop: 29385, Start Num: 57

Candidate Starts for Kahlid_35:

(Start: 57 @30131 has 69 MA's), (Start: 63 @30113 has 2 MA's), (84, 29996), (86, 29987), (97, 29906), (103, 29873), (121, 29834), (128, 29807), (132, 29774), (135, 29756), (154, 29648), (158, 29633), (160, 29627), (162, 29615), (164, 29609), (165, 29603), (166, 29600), (184, 29540), (194, 29510), (201, 29480), (214, 29420), (216, 29411), (219, 29402),

Gene: Kamryn_3 Start: 473, Stop: 1339, Start Num: 26

Candidate Starts for Kamryn_3:

(Start: 26 @473 has 109 MA's), (Start: 38 @512 has 1 MA's), (62, 590), (67, 608), (70, 629), (74, 665), (80, 695), (91, 749), (102, 833), (104, 839), (106, 845), (127, 908), (159, 1100), (165, 1127), (174,

1160), (184, 1190), (209, 1292), (210, 1295),

Gene: KappaFarmDelta_66 Start: 40666, Stop: 41451, Start Num: 50

Candidate Starts for KappaFarmDelta_66:

(10, 40516), (11, 40525), (39, 40636), (Start: 50 @40666 has 22 MA's), (73, 40783), (74, 40789), (97, 40921), (134, 41083), (138, 41101), (150, 41182), (151, 41185), (204, 41383),

Gene: Kboogie_3 Start: 473, Stop: 1339, Start Num: 26

Candidate Starts for Kboogie_3:

(Start: 26 @473 has 109 MA's), (Start: 38 @512 has 1 MA's), (62, 590), (67, 608), (70, 629), (74, 665), (80, 695), (91, 749), (102, 833), (104, 839), (106, 845), (127, 908), (159, 1100), (165, 1127), (174, 1160), (184, 1190), (209, 1292), (210, 1295),

Gene: Kela_33 Start: 20036, Stop: 19344, Start Num: 61

Candidate Starts for Kela_33:

(25, 20126), (28, 20117), (48, 20078), (Start: 61 @20036 has 20 MA's), (62, 20030), (67, 20012), (Start: 72 @19970 has 1 MA's), (73, 19961), (87, 19901), (95, 19874), (130, 19727), (151, 19610), (164, 19559), (175, 19517), (177, 19508), (191, 19463), (204, 19403), (211, 19373),

Gene: Kingsolomon_33 Start: 30387, Stop: 29647, Start Num: 57

Candidate Starts for Kingsolomon_33:

(Start: 57 @30387 has 69 MA's), (65, 30363), (71, 30327), (88, 30237), (124, 30081), (135, 30012), (140, 29991), (158, 29889), (162, 29871), (164, 29865), (165, 29859), (189, 29781), (204, 29718), (211, 29688),

Gene: KirDoubleO7_31 Start: 30384, Stop: 29644, Start Num: 57

Candidate Starts for KirDoubleO7_31:

(Start: 57 @30384 has 69 MA's), (65, 30360), (71, 30324), (88, 30234), (124, 30078), (135, 30009), (140, 29988), (153, 29904), (158, 29886), (162, 29868), (164, 29862), (165, 29856), (204, 29715), (211, 29685),

Gene: KleverKiS_48 Start: 35908, Stop: 35111, Start Num: 47

Candidate Starts for KleverKiS_48:

(Start: 47 @35908 has 22 MA's), (70, 35824), (73, 35794), (74, 35788), (91, 35692), (94, 35662), (102, 35608), (111, 35575), (143, 35419), (147, 35392), (148, 35389), (159, 35347), (165, 35320), (182, 35266), (194, 35227), (197, 35212), (211, 35149), (218, 35119),

Gene: Koguma_3 Start: 473, Stop: 1339, Start Num: 26

Candidate Starts for Koguma_3:

(Start: 26 @473 has 109 MA's), (Start: 38 @512 has 1 MA's), (62, 590), (67, 608), (70, 629), (74, 665), (80, 695), (91, 749), (102, 833), (104, 839), (106, 845), (123, 893), (127, 908), (159, 1100), (165, 1127), (174, 1160), (184, 1190), (209, 1292), (210, 1295),

Gene: Kradal_42 Start: 24210, Stop: 23518, Start Num: 61

Candidate Starts for Kradal_42:

(Start: 61 @24210 has 20 MA's), (67, 24186), (Start: 72 @24144 has 1 MA's), (74, 24129), (87, 24075), (95, 24048), (105, 23988), (134, 23874), (164, 23733), (177, 23682), (185, 23652), (191, 23637), (204, 23577), (207, 23568),

Gene: Kropertea_32 Start: 28987, Stop: 28250, Start Num: 59

Candidate Starts for Kropertea_32:

(Start: 59 @28987 has 12 MA's), (Start: 63 @28972 has 2 MA's), (65, 28966), (70, 28936), (86, 28846), (96, 28777), (103, 28732), (105, 28726), (116, 28702), (124, 28684), (128, 28666), (135, 28615), (154,

28507), (158, 28492), (162, 28474), (164, 28468), (165, 28462), (178, 28414), (194, 28369),

Gene: Krypton555_33 Start: 30293, Stop: 29553, Start Num: 57

Candidate Starts for Krypton555_33:

(Start: 57 @30293 has 69 MA's), (65, 30269), (71, 30233), (88, 30143), (124, 29987), (135, 29918), (140, 29897), (158, 29795), (162, 29777), (164, 29771), (165, 29765), (204, 29624), (211, 29594),

Gene: Kudrefre_95 Start: 56708, Stop: 57451, Start Num: 64

Candidate Starts for Kudrefre_95:

(Start: 64 @56708 has 3 MA's), (73, 56771), (74, 56777), (95, 56888), (122, 56996), (127, 57014), (128, 57020), (138, 57083), (142, 57125), (154, 57182), (156, 57191), (162, 57215), (165, 57227), (184, 57290), (185, 57293), (194, 57320), (205, 57371), (211, 57398), (221, 57443),

Gene: Labradorite_3 Start: 473, Stop: 1339, Start Num: 26

Candidate Starts for Labradorite_3:

(Start: 26 @473 has 109 MA's), (Start: 38 @512 has 1 MA's), (62, 590), (67, 608), (70, 629), (74, 665), (80, 695), (91, 749), (102, 833), (104, 839), (106, 845), (127, 908), (159, 1100), (165, 1127), (174, 1160), (184, 1190), (209, 1292), (210, 1295),

Gene: Latch_3 Start: 477, Stop: 1343, Start Num: 26

Candidate Starts for Latch_3:

(Start: 26 @477 has 109 MA's), (Start: 38 @516 has 1 MA's), (62, 594), (67, 612), (70, 633), (74, 669), (80, 699), (91, 753), (102, 837), (104, 843), (106, 849), (127, 912), (159, 1104), (165, 1131), (174, 1164), (184, 1194), (209, 1296), (210, 1299),

Gene: Laure_191 Start: 118946, Stop: 119599, Start Num: 59

Candidate Starts for Laure_191:

(Start: 59 @118946 has 12 MA's), (73, 119024), (99, 119156), (106, 119189), (107, 119195), (147, 119351), (151, 119366), (165, 119423), (191, 119486),

Gene: LeBron_32 Start: 29003, Stop: 28257, Start Num: 61

Candidate Starts for LeBron_32:

(Start: 57 @29009 has 69 MA's), (Start: 61 @29003 has 20 MA's), (91, 28841), (97, 28787), (99, 28778), (103, 28754), (106, 28745), (121, 28715), (128, 28688), (132, 28655), (135, 28637), (151, 28541), (152, 28535), (154, 28529), (158, 28514), (162, 28496), (164, 28490), (165, 28484), (184, 28421), (204, 28343), (211, 28313), (220, 28280),

Gene: LeoJr_192 Start: 129755, Stop: 130420, Start Num: 57

Candidate Starts for LeoJr_192:

(Start: 57 @129755 has 69 MA's), (73, 129839), (96, 129950), (107, 130010), (129, 130073), (147, 130166), (164, 130232), (165, 130238), (201, 130343),

Gene: Lethe_3 Start: 473, Stop: 1339, Start Num: 26

Candidate Starts for Lethe_3:

(Start: 26 @473 has 109 MA's), (Start: 38 @512 has 1 MA's), (62, 590), (67, 608), (70, 629), (74, 665), (80, 695), (91, 749), (102, 833), (104, 839), (106, 845), (127, 908), (159, 1100), (165, 1127), (174, 1160), (184, 1190), (210, 1295),

Gene: Lewan_35 Start: 30126, Stop: 29380, Start Num: 57

Candidate Starts for Lewan_35:

(Start: 57 @30126 has 69 MA's), (Start: 63 @30108 has 2 MA's), (97, 29901), (103, 29868), (121, 29829), (128, 29802), (132, 29769), (135, 29751), (154, 29643), (158, 29628), (160, 29622), (162, 29610), (164, 29604), (165, 29598), (166, 29595), (184, 29535), (194, 29505), (201, 29475), (214,

29415), (216, 29406), (219, 29397),

Gene: LifeSavor_3 Start: 473, Stop: 1339, Start Num: 26

Candidate Starts for LifeSavor_3:

(Start: 26 @473 has 109 MA's), (Start: 38 @512 has 1 MA's), (62, 590), (67, 608), (70, 629), (74, 665), (80, 695), (91, 749), (102, 833), (104, 839), (106, 845), (127, 908), (159, 1100), (165, 1127), (174, 1160), (184, 1190), (209, 1292), (210, 1295),

Gene: LilDestine_35 Start: 30125, Stop: 29379, Start Num: 57

Candidate Starts for LilDestine_35:

(Start: 57 @30125 has 69 MA's), (Start: 63 @30107 has 2 MA's), (77, 30014), (97, 29900), (103, 29867), (121, 29828), (128, 29801), (132, 29768), (135, 29750), (154, 29642), (158, 29627), (160, 29621), (162, 29609), (164, 29603), (165, 29597), (166, 29594), (184, 29534), (194, 29504), (201, 29474), (214, 29414), (216, 29405), (219, 29396),

Gene: LilJank_88 Start: 56243, Stop: 56977, Start Num: 63

Candidate Starts for LilJank_88:

(Start: 63 @56243 has 2 MA's), (Start: 64 @56246 has 3 MA's), (73, 56309), (78, 56339), (105, 56486), (127, 56552), (129, 56564), (138, 56621), (151, 56708), (154, 56720), (162, 56753), (165, 56765), (184, 56828), (197, 56873), (212, 56942),

Gene: LilhomieP_46 Start: 35928, Stop: 35131, Start Num: 47

Candidate Starts for LilhomieP_46:

(Start: 47 @35928 has 22 MA's), (70, 35844), (73, 35814), (74, 35808), (91, 35712), (94, 35682), (102, 35628), (111, 35595), (143, 35439), (147, 35412), (148, 35409), (159, 35367), (165, 35340), (182, 35286), (194, 35247), (197, 35232), (211, 35169), (218, 35139),

Gene: Littleton_3 Start: 477, Stop: 1343, Start Num: 26

Candidate Starts for Littleton_3:

(Start: 26 @477 has 109 MA's), (Start: 38 @516 has 1 MA's), (62, 594), (67, 612), (70, 633), (74, 669), (80, 699), (91, 753), (102, 837), (104, 843), (106, 849), (123, 897), (127, 912), (159, 1104), (165, 1131), (174, 1164), (184, 1194), (209, 1296), (210, 1299),

Gene: LiyuLake_33 Start: 30342, Stop: 29602, Start Num: 57

Candidate Starts for LiyuLake_33:

(44, 30396), (Start: 57 @30342 has 69 MA's), (65, 30318), (71, 30282), (88, 30192), (124, 30036), (135, 29967), (140, 29946), (153, 29862), (158, 29844), (162, 29826), (164, 29820), (165, 29814), (204, 29673),

Gene: Loadrie_35 Start: 30158, Stop: 29412, Start Num: 57

Candidate Starts for Loadrie_35:

(Start: 57 @30158 has 69 MA's), (Start: 63 @30140 has 2 MA's), (97, 29933), (103, 29900), (121, 29861), (128, 29834), (132, 29801), (135, 29783), (154, 29675), (158, 29660), (160, 29654), (162, 29642), (164, 29636), (165, 29630), (166, 29627), (184, 29567), (194, 29537), (201, 29507), (214, 29447), (216, 29438), (219, 29429),

Gene: LolaVinca_3 Start: 473, Stop: 1339, Start Num: 26

Candidate Starts for LolaVinca_3:

(Start: 26 @473 has 109 MA's), (Start: 38 @512 has 1 MA's), (62, 590), (67, 608), (70, 629), (74, 665), (80, 695), (91, 749), (102, 833), (104, 839), (106, 845), (127, 908), (150, 1067), (159, 1100), (165, 1127), (174, 1160), (184, 1190), (209, 1292), (210, 1295),

Gene: Lolly9_33 Start: 30157, Stop: 29417, Start Num: 57

Candidate Starts for Lolly9_33:

(Start: 57 @30157 has 69 MA's), (65, 30133), (71, 30097), (88, 30007), (124, 29851), (135, 29782), (140, 29761), (158, 29659), (162, 29641), (164, 29635), (165, 29629), (204, 29488), (206, 29482), (210, 29464),

Gene: LookingGlass_3 Start: 473, Stop: 1339, Start Num: 26

Candidate Starts for LookingGlass_3:

(Start: 26 @473 has 109 MA's), (Start: 38 @512 has 1 MA's), (62, 590), (67, 608), (70, 629), (74, 665), (80, 695), (91, 749), (102, 833), (104, 839), (106, 845), (127, 908), (159, 1100), (165, 1127), (174, 1160), (184, 1190), (210, 1295),

Gene: LordLeafolot_3 Start: 473, Stop: 1339, Start Num: 26

Candidate Starts for LordLeafolot_3:

(Start: 26 @473 has 109 MA's), (Start: 38 @512 has 1 MA's), (62, 590), (67, 608), (70, 629), (74, 665), (80, 695), (91, 749), (102, 833), (104, 839), (106, 845), (127, 908), (150, 1067), (159, 1100), (165, 1127), (174, 1160), (184, 1190), (209, 1292), (210, 1295),

Gene: Lozinak_137 Start: 75782, Stop: 76489, Start Num: 55

Candidate Starts for Lozinak_137:

(Start: 55 @75782 has 21 MA's), (76, 75890), (84, 75914), (96, 75962), (141, 76166), (152, 76226), (211, 76448),

Gene: LuckySocke_114 Start: 61556, Stop: 62245, Start Num: 61

Candidate Starts for LuckySocke_114:

(Start: 61 @61556 has 20 MA's), (67, 61580), (73, 61631), (97, 61754), (145, 61961), (165, 62054), (169, 62063), (191, 62135), (195, 62150), (201, 62177),

Gene: Lumos_33 Start: 30384, Stop: 29644, Start Num: 57

Candidate Starts for Lumos_33:

(Start: 57 @30384 has 69 MA's), (65, 30360), (71, 30324), (88, 30234), (124, 30078), (135, 30009), (140, 29988), (158, 29886), (162, 29868), (164, 29862), (165, 29856), (189, 29778), (204, 29715), (211, 29685),

Gene: Lunareta_3 Start: 477, Stop: 1343, Start Num: 26

Candidate Starts for Lunareta_3:

(Start: 26 @477 has 109 MA's), (Start: 38 @516 has 1 MA's), (62, 594), (67, 612), (70, 633), (74, 669), (80, 699), (91, 753), (102, 837), (104, 843), (106, 849), (127, 912), (159, 1104), (165, 1131), (174, 1164), (184, 1194), (210, 1299),

Gene: Lynnae_35 Start: 30114, Stop: 29368, Start Num: 57

Candidate Starts for Lynnae_35:

(Start: 57 @30114 has 69 MA's), (Start: 63 @30096 has 2 MA's), (84, 29979), (86, 29970), (97, 29889), (103, 29856), (121, 29817), (128, 29790), (132, 29757), (135, 29739), (154, 29631), (158, 29616), (160, 29610), (162, 29598), (164, 29592), (165, 29586), (166, 29583), (184, 29523), (194, 29493), (201, 29463), (214, 29403), (216, 29394), (219, 29385),

Gene: Lysidious_67 Start: 43158, Stop: 43943, Start Num: 50

Candidate Starts for Lysidious_67:

(5, 42906), (10, 43008), (11, 43017), (39, 43128), (Start: 50 @43158 has 22 MA's), (68, 43236), (73, 43275), (74, 43281), (97, 43413), (134, 43575), (138, 43593), (150, 43674), (151, 43677), (164, 43728), (204, 43875),

Gene: MAckerman_32 Start: 28983, Stop: 28231, Start Num: 57

Candidate Starts for MAckerman_32:

(Start: 57 @28983 has 69 MA's), (Start: 61 @28977 has 20 MA's), (91, 28815), (97, 28761), (99, 28752), (103, 28728), (106, 28719), (121, 28689), (128, 28662), (132, 28629), (135, 28611), (152, 28509), (154, 28503), (158, 28488), (162, 28470), (164, 28464), (165, 28458), (184, 28395), (204, 28317), (211, 28287), (220, 28254),

Gene: Malachai_63 Start: 42626, Stop: 43411, Start Num: 50

Candidate Starts for Malachai_63:

(39, 42596), (Start: 50 @42626 has 22 MA's), (73, 42743), (74, 42749), (97, 42881), (105, 42920), (134, 43043), (138, 43061), (150, 43142), (151, 43145), (204, 43343),

Gene: Mangeria_3 Start: 473, Stop: 1339, Start Num: 26

Candidate Starts for Mangeria_3:

(Start: 26 @473 has 109 MA's), (Start: 38 @512 has 1 MA's), (62, 590), (67, 608), (70, 629), (74, 665), (80, 695), (104, 839), (106, 845), (127, 908), (159, 1100), (165, 1127), (174, 1160), (184, 1190), (210, 1295),

Gene: MaryV_58 Start: 41503, Stop: 40754, Start Num: 53

Candidate Starts for MaryV_58:

(6, 41740), (7, 41728), (8, 41692), (13, 41647), (17, 41623), (40, 41539), (Start: 53 @41503 has 5 MA's), (62, 41464), (69, 41431), (Start: 72 @41404 has 1 MA's), (74, 41389), (78, 41365), (105, 41197), (109, 41182), (128, 41125), (151, 41023), (165, 40966), (168, 40954), (194, 40873), (201, 40843), (203, 40831), (209, 40804), (211, 40795), (212, 40789), (220, 40762),

Gene: Matsumoto_3 Start: 477, Stop: 1343, Start Num: 26

Candidate Starts for Matsumoto_3:

(Start: 26 @477 has 109 MA's), (Start: 38 @516 has 1 MA's), (62, 594), (67, 612), (70, 633), (74, 669), (80, 699), (91, 753), (102, 837), (104, 843), (106, 849), (127, 912), (159, 1104), (165, 1131), (174, 1164), (184, 1194), (209, 1296), (210, 1299),

Gene: Maturis_3 Start: 477, Stop: 1343, Start Num: 26

Candidate Starts for Maturis_3:

(Start: 26 @477 has 109 MA's), (Start: 38 @516 has 1 MA's), (62, 594), (67, 612), (70, 633), (74, 669), (80, 699), (91, 753), (102, 837), (104, 843), (106, 849), (127, 912), (159, 1104), (165, 1131), (174, 1164), (184, 1194), (210, 1299),

Gene: McGee_3 Start: 512, Stop: 1339, Start Num: 38

Candidate Starts for McGee_3:

(Start: 26 @473 has 109 MA's), (Start: 38 @512 has 1 MA's), (62, 590), (67, 608), (70, 629), (74, 665), (80, 695), (91, 749), (102, 833), (104, 839), (106, 845), (123, 893), (127, 908), (159, 1100), (165, 1127), (174, 1160), (184, 1190), (209, 1292), (210, 1295),

Gene: Melpomini_3 Start: 456, Stop: 1322, Start Num: 26

Candidate Starts for Melpomini_3:

(Start: 26 @456 has 109 MA's), (Start: 38 @495 has 1 MA's), (62, 573), (67, 591), (70, 612), (74, 648), (80, 678), (91, 732), (102, 816), (104, 822), (106, 828), (123, 876), (127, 891), (159, 1083), (165, 1110), (174, 1143), (184, 1173), (209, 1275), (210, 1278),

Gene: Miley16_35 Start: 30126, Stop: 29380, Start Num: 57

Candidate Starts for Miley16_35:

(Start: 57 @30126 has 69 MA's), (Start: 63 @30108 has 2 MA's), (97, 29901), (103, 29868), (121, 29829), (128, 29802), (132, 29769), (135, 29751), (154, 29643), (158, 29628), (160, 29622), (162, 29610), (164, 29604), (165, 29598), (166, 29595), (184, 29535), (194, 29505), (201, 29475), (214,

29415), (216, 29406), (219, 29397),

Gene: Mimi_190 Start: 131559, Stop: 132209, Start Num: 58

Candidate Starts for Mimi_190:

(Start: 58 @131559 has 5 MA's), (73, 131640), (78, 131670), (106, 131805), (107, 131811), (147, 131967), (164, 132033), (165, 132039), (194, 132114), (207, 132171), (212, 132198),

Gene: MiniLon_33 Start: 30158, Stop: 29418, Start Num: 57

Candidate Starts for MiniLon_33:

(Start: 57 @30158 has 69 MA's), (65, 30134), (71, 30098), (88, 30008), (124, 29852), (135, 29783), (140, 29762), (158, 29660), (162, 29642), (164, 29636), (165, 29630), (204, 29489), (206, 29483), (210, 29465),

Gene: MiniMac_33 Start: 30158, Stop: 29418, Start Num: 57

Candidate Starts for MiniMac_33:

(Start: 57 @30158 has 69 MA's), (65, 30134), (71, 30098), (88, 30008), (124, 29852), (135, 29783), (140, 29762), (158, 29660), (162, 29642), (164, 29636), (165, 29630), (204, 29489), (206, 29483), (210, 29465),

Gene: Miskis_132 Start: 75213, Stop: 75920, Start Num: 55

Candidate Starts for Miskis_132:

(Start: 55 @75213 has 21 MA's), (76, 75321), (84, 75345), (96, 75393), (211, 75879),

Gene: MissRona_68 Start: 44111, Stop: 44896, Start Num: 50

Candidate Starts for MissRona_68:

(39, 44081), (Start: 50 @44111 has 22 MA's), (73, 44228), (74, 44234), (96, 44354), (97, 44366), (134, 44528), (138, 44546), (150, 44627), (151, 44630), (204, 44828),

Gene: MkaliMitinis3_35 Start: 30126, Stop: 29380, Start Num: 57

Candidate Starts for MkaliMitinis3_35:

(Start: 57 @30126 has 69 MA's), (Start: 63 @30108 has 2 MA's), (84, 29991), (86, 29982), (97, 29901), (103, 29868), (121, 29829), (128, 29802), (132, 29769), (135, 29751), (154, 29643), (158, 29628), (160, 29622), (162, 29610), (164, 29604), (165, 29598), (166, 29595), (184, 29535), (194, 29505), (201, 29475), (214, 29415), (216, 29406), (219, 29397),

Gene: MoMoMixon_3 Start: 473, Stop: 1339, Start Num: 26

Candidate Starts for MoMoMixon_3:

(Start: 26 @473 has 109 MA's), (Start: 38 @512 has 1 MA's), (62, 590), (67, 608), (70, 629), (74, 665), (80, 695), (91, 749), (102, 833), (104, 839), (106, 845), (127, 908), (159, 1100), (165, 1127), (174, 1160), (187, 1199), (191, 1211), (210, 1295),

Gene: Moby_3 Start: 477, Stop: 1343, Start Num: 26

Candidate Starts for Moby_3:

(Start: 26 @477 has 109 MA's), (Start: 38 @516 has 1 MA's), (62, 594), (67, 612), (70, 633), (74, 669), (80, 699), (91, 753), (102, 837), (104, 843), (106, 849), (127, 912), (159, 1104), (165, 1131), (174, 1164), (184, 1194), (210, 1299),

Gene: Moiqah_3 Start: 477, Stop: 1343, Start Num: 26

Candidate Starts for Moiqah_3:

(Start: 26 @477 has 109 MA's), (Start: 38 @516 has 1 MA's), (62, 594), (67, 612), (70, 633), (74, 669), (80, 699), (91, 753), (102, 837), (104, 843), (106, 849), (127, 912), (159, 1104), (165, 1131), (174, 1164), (184, 1194), (210, 1299),

Gene: Mollymur_99 Start: 66160, Stop: 66834, Start Num: 59

Candidate Starts for Mollymur_99:

(31, 66079), (Start: 59 @66160 has 12 MA's), (73, 66238), (76, 66262), (94, 66325), (144, 66544), (150, 66580), (153, 66592), (165, 66640), (188, 66712), (215, 66826),

Gene: Momo_3 Start: 477, Stop: 1343, Start Num: 26

Candidate Starts for Momo_3:

(Start: 26 @477 has 109 MA's), (Start: 38 @516 has 1 MA's), (62, 594), (67, 612), (70, 633), (74, 669), (80, 699), (91, 753), (102, 837), (104, 843), (106, 849), (127, 912), (159, 1104), (165, 1131), (174, 1164), (184, 1194), (209, 1296), (210, 1299),

Gene: Montpel_3 Start: 477, Stop: 1343, Start Num: 26

Candidate Starts for Montpel_3:

(Start: 26 @477 has 109 MA's), (Start: 38 @516 has 1 MA's), (62, 594), (67, 612), (70, 633), (74, 669), (80, 699), (91, 753), (102, 837), (104, 843), (106, 849), (127, 912), (159, 1104), (165, 1131), (174, 1164), (184, 1194), (210, 1299),

Gene: Moostard_33 Start: 30389, Stop: 29649, Start Num: 57

Candidate Starts for Moostard_33:

(Start: 57 @30389 has 69 MA's), (65, 30365), (71, 30329), (88, 30239), (124, 30083), (135, 30014), (140, 29993), (158, 29891), (162, 29873), (164, 29867), (165, 29861), (189, 29783), (204, 29720), (211, 29690),

Gene: Morizzled23_3 Start: 456, Stop: 1322, Start Num: 26

Candidate Starts for Morizzled23_3:

(Start: 26 @456 has 109 MA's), (Start: 38 @495 has 1 MA's), (62, 573), (67, 591), (70, 612), (74, 648), (80, 678), (91, 732), (102, 816), (104, 822), (106, 828), (127, 891), (159, 1083), (165, 1110), (174, 1143), (184, 1173), (209, 1275), (210, 1278),

Gene: MrMagoo_56 Start: 38232, Stop: 37432, Start Num: 47

Candidate Starts for MrMagoo_56:

(9, 38379), (Start: 47 @38232 has 22 MA's), (73, 38115), (74, 38109), (96, 37971), (98, 37953), (104, 37923), (111, 37896), (124, 37866), (134, 37803), (143, 37740), (147, 37713), (148, 37710), (159, 37668), (165, 37641), (167, 37632), (174, 37608), (183, 37581), (195, 37545), (197, 37533), (209, 37479), (211, 37470), (218, 37440),

Gene: MsGreen_33 Start: 30387, Stop: 29647, Start Num: 57

Candidate Starts for MsGreen_33:

(Start: 57 @30387 has 69 MA's), (65, 30363), (71, 30327), (88, 30237), (124, 30081), (135, 30012), (140, 29991), (158, 29889), (162, 29871), (164, 29865), (165, 29859), (189, 29781), (204, 29718), (211, 29688),

Gene: Myrna_3 Start: 913, Stop: 1767, Start Num: 29

Candidate Starts for Myrna_3:

(Start: 29 @913 has 2 MA's), (Start: 57 @1000 has 69 MA's), (Start: 64 @1021 has 3 MA's), (68, 1045), (74, 1090), (77, 1111), (80, 1123), (81, 1126), (99, 1246), (102, 1267), (110, 1300), (117, 1312), (124, 1330), (126, 1336), (143, 1444), (151, 1486), (159, 1516), (165, 1543), (171, 1567), (172, 1570), (184, 1606), (186, 1612), (187, 1615), (195, 1639),

Gene: Naija_3 Start: 477, Stop: 1343, Start Num: 26

Candidate Starts for Naija_3:

(Start: 26 @477 has 109 MA's), (Start: 38 @516 has 1 MA's), (62, 594), (67, 612), (70, 633), (74, 669), (80, 699), (91, 753), (102, 837), (104, 843), (106, 849), (127, 912), (159, 1104), (165, 1131), (174,

1164), (184, 1194), (209, 1296), (210, 1299),

Gene: Nanosmite_53 Start: 37550, Stop: 36750, Start Num: 47

Candidate Starts for Nanosmite_53:

(Start: 47 @37550 has 22 MA's), (73, 37433), (74, 37427), (78, 37403), (94, 37301), (102, 37247), (107, 37229), (114, 37205), (142, 37061), (147, 37031), (148, 37028), (159, 36986), (165, 36959), (183, 36899), (198, 36848), (209, 36797), (218, 36758),

Gene: Napoleon13_3 Start: 473, Stop: 1339, Start Num: 26

Candidate Starts for Napoleon13_3:

(Start: 26 @473 has 109 MA's), (Start: 38 @512 has 1 MA's), (62, 590), (67, 608), (70, 629), (74, 665), (80, 695), (91, 749), (102, 833), (104, 839), (106, 845), (127, 908), (159, 1100), (165, 1127), (174, 1160), (184, 1190), (209, 1292), (210, 1295),

Gene: Nappy_3 Start: 473, Stop: 1339, Start Num: 26

Candidate Starts for Nappy_3:

(Start: 26 @473 has 109 MA's), (Start: 38 @512 has 1 MA's), (62, 590), (67, 608), (70, 629), (74, 665), (80, 695), (91, 749), (102, 833), (104, 839), (106, 845), (127, 908), (159, 1100), (165, 1127), (174, 1160), (184, 1190), (210, 1295),

Gene: Naval22_3 Start: 473, Stop: 1339, Start Num: 26

Candidate Starts for Naval22_3:

(Start: 26 @473 has 109 MA's), (Start: 38 @512 has 1 MA's), (62, 590), (67, 608), (70, 629), (74, 665), (80, 695), (91, 749), (102, 833), (104, 839), (106, 845), (127, 908), (159, 1100), (165, 1127), (174, 1160), (187, 1199), (191, 1211), (210, 1295),

Gene: Netyap_35 Start: 30126, Stop: 29380, Start Num: 57

Candidate Starts for Netyap_35:

(Start: 57 @30126 has 69 MA's), (Start: 63 @30108 has 2 MA's), (97, 29901), (103, 29868), (121, 29829), (128, 29802), (132, 29769), (135, 29751), (154, 29643), (158, 29628), (160, 29622), (162, 29610), (164, 29604), (165, 29598), (166, 29595), (184, 29535), (194, 29505), (201, 29475), (214, 29415), (216, 29406), (219, 29397),

Gene: Neville_85 Start: 54863, Stop: 55597, Start Num: 63

Candidate Starts for Neville_85:

(Start: 63 @54863 has 2 MA's), (Start: 64 @54866 has 3 MA's), (73, 54929), (78, 54959), (104, 55103), (105, 55106), (127, 55172), (129, 55184), (138, 55241), (151, 55328), (154, 55340), (162, 55373), (165, 55385), (184, 55448), (197, 55493), (212, 55562),

Gene: Ngannou_3 Start: 456, Stop: 1322, Start Num: 26

Candidate Starts for Ngannou_3:

(Start: 26 @456 has 109 MA's), (Start: 38 @495 has 1 MA's), (62, 573), (67, 591), (70, 612), (74, 648), (80, 678), (91, 732), (102, 816), (104, 822), (106, 828), (127, 891), (159, 1083), (165, 1110), (174, 1143), (184, 1173), (209, 1275), (210, 1278),

Gene: Nicholas_33 Start: 30387, Stop: 29647, Start Num: 57

Candidate Starts for Nicholas_33:

(Start: 57 @30387 has 69 MA's), (65, 30363), (71, 30327), (88, 30237), (124, 30081), (135, 30012), (140, 29991), (158, 29889), (162, 29871), (164, 29865), (165, 29859), (189, 29781), (204, 29718), (211, 29688),

Gene: Nicholasp3_35 Start: 30128, Stop: 29382, Start Num: 57

Candidate Starts for Nicholasp3_35:

(Start: 57 @30128 has 69 MA's), (Start: 63 @30110 has 2 MA's), (77, 30017), (97, 29903), (103, 29870), (121, 29831), (128, 29804), (132, 29771), (135, 29753), (154, 29645), (158, 29630), (160, 29624), (162, 29612), (164, 29606), (165, 29600), (166, 29597), (184, 29537), (194, 29507), (201, 29477), (214, 29417), (216, 29408), (219, 29399),

Gene: Nidhogg_3 Start: 473, Stop: 1339, Start Num: 26

Candidate Starts for Nidhogg_3:

(Start: 26 @473 has 109 MA's), (Start: 38 @512 has 1 MA's), (62, 590), (67, 608), (70, 629), (74, 665), (80, 695), (91, 749), (102, 833), (104, 839), (106, 845), (127, 908), (159, 1100), (165, 1127), (174, 1160), (187, 1199), (191, 1211), (210, 1295),

Gene: Nirvana_43 Start: 25143, Stop: 24448, Start Num: 61

Candidate Starts for Nirvana_43:

(25, 25266), (Start: 29 @25245 has 2 MA's), (32, 25233), (33, 25230), (36, 25224), (Start: 61 @25143 has 20 MA's), (67, 25119), (70, 25098), (Start: 72 @25077 has 1 MA's), (73, 25068), (83, 25020), (87, 25008), (89, 25005), (115, 24894), (123, 24876), (125, 24870), (130, 24834), (191, 24570), (216, 24459),

Gene: NoodleTree_3 Start: 473, Stop: 1339, Start Num: 26

Candidate Starts for NoodleTree_3:

(Start: 26 @473 has 109 MA's), (Start: 38 @512 has 1 MA's), (62, 590), (67, 608), (70, 629), (74, 665), (80, 695), (91, 749), (102, 833), (104, 839), (106, 845), (127, 908), (159, 1100), (165, 1127), (174, 1160), (184, 1190), (210, 1295),

Gene: Norvs_135 Start: 75176, Stop: 75883, Start Num: 55

Candidate Starts for Norvs_135:

(Start: 55 @75176 has 21 MA's), (76, 75284), (84, 75308), (96, 75356), (141, 75560), (152, 75620), (211, 75842),

Gene: NuevoMundo_3 Start: 470, Stop: 1336, Start Num: 26

Candidate Starts for NuevoMundo_3:

(Start: 26 @470 has 109 MA's), (Start: 38 @509 has 1 MA's), (62, 587), (67, 605), (70, 626), (74, 662), (80, 692), (91, 746), (102, 830), (104, 836), (106, 842), (127, 905), (129, 917), (159, 1097), (165, 1124), (174, 1157), (184, 1187), (209, 1289), (210, 1292),

Gene: Obliviate_62 Start: 39884, Stop: 40669, Start Num: 50

Candidate Starts for Obliviate_62:

(10, 39734), (11, 39743), (39, 39854), (Start: 50 @39884 has 22 MA's), (68, 39962), (73, 40001), (74, 40007), (97, 40139), (134, 40301), (138, 40319), (150, 40400), (151, 40403), (164, 40454), (204, 40601),

Gene: Octobien14_93 Start: 55909, Stop: 56829, Start Num: 14

Candidate Starts for Octobien14_93:

(Start: 14 @55909 has 1 MA's), (Start: 64 @56086 has 3 MA's), (73, 56149), (74, 56155), (95, 56266), (127, 56392), (128, 56398), (129, 56404), (138, 56461), (154, 56560), (156, 56569), (162, 56593), (165, 56605), (184, 56668), (185, 56671), (205, 56749), (211, 56776), (221, 56821),

Gene: OhShagHennessy_32 Start: 28948, Stop: 28196, Start Num: 57

Candidate Starts for OhShagHennessy_32:

(Start: 57 @28948 has 69 MA's), (Start: 61 @28942 has 20 MA's), (91, 28780), (97, 28726), (99, 28717), (103, 28693), (106, 28684), (121, 28654), (128, 28627), (132, 28594), (135, 28576), (151, 28480), (152, 28474), (154, 28468), (158, 28453), (162, 28435), (164, 28429), (165, 28423), (184, 28360), (204, 28282), (211, 28252), (220, 28219),

Gene: OneUp_121 Start: 73707, Stop: 74444, Start Num: 55

Candidate Starts for OneUp_121:

(Start: 55 @73707 has 21 MA's), (66, 73740), (78, 73824), (94, 73884), (101, 73932), (152, 74169), (193, 74310), (213, 74400),

Gene: OverPar_36 Start: 30158, Stop: 29412, Start Num: 57

Candidate Starts for OverPar_36:

(Start: 57 @30158 has 69 MA's), (Start: 63 @30140 has 2 MA's), (97, 29933), (103, 29900), (121, 29861), (128, 29834), (132, 29801), (135, 29783), (154, 29675), (158, 29660), (160, 29654), (162, 29642), (164, 29636), (165, 29630), (166, 29627), (184, 29567), (194, 29537), (201, 29507), (214, 29447), (216, 29438), (219, 29429),

Gene: PYPDinur_32 Start: 29088, Stop: 28351, Start Num: 59

Candidate Starts for PYPDinur_32:

(3, 29478), (45, 29142), (46, 29133), (Start: 59 @29088 has 12 MA's), (Start: 63 @29073 has 2 MA's), (65, 29067), (86, 28947), (105, 28827), (116, 28803), (124, 28785), (128, 28767), (135, 28716), (154, 28608), (158, 28593), (162, 28575), (164, 28569), (165, 28563),

Gene: Panchaali_184 Start: 135235, Stop: 135906, Start Num: 54

Candidate Starts for Panchaali_184:

(Start: 54 @135235 has 4 MA's), (65, 135274), (73, 135334), (96, 135445), (107, 135505), (129, 135568), (147, 135661), (164, 135727), (201, 135838), (212, 135892),

Gene: Park1214_121 Start: 62459, Stop: 63148, Start Num: 61

Candidate Starts for Park1214_121:

(Start: 61 @62459 has 20 MA's), (67, 62483), (73, 62534), (96, 62645), (97, 62657), (145, 62864), (165, 62957), (181, 63002), (185, 63023), (191, 63038), (195, 63053),

Gene: Patbob_188 Start: 131947, Stop: 132597, Start Num: 59

Candidate Starts for Patbob_188:

(51, 131911), (Start: 59 @131947 has 12 MA's), (73, 132028), (78, 132058), (107, 132199), (147, 132355), (164, 132421), (165, 132427), (194, 132502), (207, 132559), (212, 132586),

Gene: Patter_3 Start: 494, Stop: 1360, Start Num: 26

Candidate Starts for Patter_3:

(Start: 26 @494 has 109 MA's), (Start: 38 @533 has 1 MA's), (62, 611), (67, 629), (70, 650), (74, 686), (80, 716), (91, 770), (102, 854), (104, 860), (106, 866), (127, 929), (159, 1121), (165, 1148), (174, 1181), (184, 1211), (209, 1313), (210, 1316),

Gene: PauloDiaboli_226 Start: 118929, Stop: 119663, Start Num: 55

Candidate Starts for PauloDiaboli_226:

(Start: 55 @118929 has 21 MA's), (94, 119124), (103, 119181), (107, 119196), (119, 119220), (128, 119253), (133, 119295), (136, 119310), (156, 119421), (165, 119457), (207, 119607),

Gene: PegLeg_47 Start: 35927, Stop: 35130, Start Num: 47

Candidate Starts for PegLeg_47:

(Start: 47 @35927 has 22 MA's), (70, 35843), (73, 35813), (74, 35807), (91, 35711), (94, 35681), (102, 35627), (111, 35594), (143, 35438), (147, 35411), (148, 35408), (159, 35366), (165, 35339), (182, 35285), (194, 35246), (197, 35231), (211, 35168), (218, 35138),

Gene: Phabba_3 Start: 1059, Stop: 1910, Start Num: 29

Candidate Starts for Phabba_3:

(20, 1020), (Start: 29 @1059 has 2 MA's), (Start: 57 @1143 has 69 MA's), (Start: 64 @1164 has 3 MA's), (68, 1188), (74, 1233), (95, 1359), (102, 1410), (110, 1443), (123, 1470), (143, 1587), (151, 1629), (159, 1659), (165, 1686), (172, 1713), (187, 1758), (195, 1782), (209, 1848), (211, 1857),

Gene: PharkleMinkus_3 Start: 473, Stop: 1339, Start Num: 26

Candidate Starts for PharkleMinkus_3:

(Start: 26 @473 has 109 MA's), (Start: 38 @512 has 1 MA's), (62, 590), (67, 608), (70, 629), (74, 665), (80, 695), (91, 749), (102, 833), (104, 839), (106, 845), (127, 908), (150, 1067), (159, 1100), (165, 1127), (174, 1160), (184, 1190), (209, 1292), (210, 1295),

Gene: PhinkBoden_136 Start: 76041, Stop: 76748, Start Num: 55

Candidate Starts for PhinkBoden_136:

(Start: 55 @76041 has 21 MA's), (76, 76149), (84, 76173), (96, 76221), (211, 76707),

Gene: Phlegm_3 Start: 477, Stop: 1343, Start Num: 26

Candidate Starts for Phlegm_3:

(Start: 26 @477 has 109 MA's), (Start: 38 @516 has 1 MA's), (62, 594), (67, 612), (70, 633), (74, 669), (80, 699), (91, 753), (102, 837), (104, 843), (106, 849), (127, 912), (159, 1104), (165, 1131), (174, 1164), (184, 1194), (209, 1296), (210, 1299),

Gene: Phrampa_183 Start: 131310, Stop: 131960, Start Num: 58

Candidate Starts for Phrampa_183:

(Start: 58 @131310 has 5 MA's), (73, 131391), (78, 131421), (106, 131556), (107, 131562), (139, 131679), (147, 131718), (164, 131784), (194, 131865), (200, 131892), (212, 131949),

Gene: Phusco_3 Start: 473, Stop: 1339, Start Num: 26

Candidate Starts for Phusco_3:

(Start: 26 @473 has 109 MA's), (Start: 38 @512 has 1 MA's), (62, 590), (67, 608), (70, 629), (74, 665), (80, 695), (91, 749), (102, 833), (104, 839), (106, 845), (127, 908), (159, 1100), (165, 1127), (174, 1160), (184, 1190), (209, 1292), (210, 1295),

Gene: Pier_3 Start: 473, Stop: 1339, Start Num: 26

Candidate Starts for Pier_3:

(Start: 26 @473 has 109 MA's), (Start: 38 @512 has 1 MA's), (62, 590), (67, 608), (70, 629), (74, 665), (80, 695), (91, 749), (102, 833), (104, 839), (106, 845), (127, 908), (159, 1100), (165, 1127), (174, 1160), (184, 1190), (209, 1292), (210, 1295),

Gene: Pio_3 Start: 473, Stop: 1339, Start Num: 26

Candidate Starts for Pio_3:

(Start: 26 @473 has 109 MA's), (Start: 38 @512 has 1 MA's), (62, 590), (67, 608), (70, 629), (74, 665), (80, 695), (91, 749), (102, 833), (104, 839), (106, 845), (127, 908), (159, 1100), (165, 1127), (174, 1160), (184, 1190), (209, 1292), (210, 1295),

Gene: Pipp_67 Start: 41988, Stop: 42773, Start Num: 50

Candidate Starts for Pipp_67:

(10, 41838), (11, 41847), (39, 41958), (Start: 50 @41988 has 22 MA's), (73, 42105), (74, 42111), (95, 42222), (97, 42243), (104, 42279), (134, 42405), (138, 42423), (150, 42504), (151, 42507), (204, 42705),

Gene: Pivoine_3 Start: 477, Stop: 1343, Start Num: 26

Candidate Starts for Pivoine_3:

(Start: 26 @477 has 109 MA's), (Start: 38 @516 has 1 MA's), (62, 594), (67, 612), (70, 633), (74, 669), (80, 699), (91, 753), (102, 837), (104, 843), (106, 849), (127, 912), (159, 1104), (165, 1131), (174,

1164), (184, 1194), (209, 1296), (210, 1299),

Gene: Poochiewood_32 Start: 28984, Stop: 28232, Start Num: 57

Candidate Starts for Poochiewood_32:

(Start: 57 @28984 has 69 MA's), (Start: 61 @28978 has 20 MA's), (91, 28816), (97, 28762), (103, 28729), (106, 28720), (121, 28690), (128, 28663), (132, 28630), (135, 28612), (152, 28510), (154, 28504), (158, 28489), (162, 28471), (164, 28465), (165, 28459), (184, 28396), (204, 28318), (211, 28288), (220, 28255),

Gene: Pupusa_3 Start: 473, Stop: 1339, Start Num: 26

Candidate Starts for Pupusa_3:

(Start: 26 @473 has 109 MA's), (Start: 38 @512 has 1 MA's), (62, 590), (67, 608), (70, 629), (74, 665), (80, 695), (91, 749), (102, 833), (104, 839), (106, 845), (127, 908), (150, 1067), (159, 1100), (165, 1127), (174, 1160), (184, 1190), (209, 1292), (210, 1295),

Gene: Quantum_41 Start: 24210, Stop: 23518, Start Num: 61

Candidate Starts for Quantum_41:

(Start: 61 @24210 has 20 MA's), (67, 24186), (Start: 72 @24144 has 1 MA's), (74, 24129), (87, 24075), (95, 24048), (105, 23988), (134, 23874), (164, 23733), (177, 23682), (185, 23652), (191, 23637), (204, 23577), (207, 23568),

Gene: Quby_32 Start: 28982, Stop: 28245, Start Num: 59

Candidate Starts for Quby_32:

(3, 29372), (45, 29036), (46, 29027), (Start: 59 @28982 has 12 MA's), (Start: 63 @28967 has 2 MA's), (65, 28961), (86, 28841), (105, 28721), (116, 28697), (124, 28679), (128, 28661), (135, 28610), (154, 28502), (158, 28487), (162, 28469), (164, 28463), (165, 28457), (178, 28409),

Gene: Rabbitrun_90 Start: 55546, Stop: 56391, Start Num: 52

Candidate Starts for Rabbitrun_90:

(Start: 52 @55546 has 1 MA's), (Start: 63 @55594 has 2 MA's), (Start: 64 @55597 has 3 MA's), (73, 55660), (78, 55690), (118, 55876), (127, 55903), (129, 55915), (138, 55972), (151, 56059), (154, 56071), (162, 56104), (165, 56116), (184, 56179), (185, 56182), (194, 56209), (197, 56224), (218, 56317), (221, 56332),

Gene: Racecar_191 Start: 131722, Stop: 132372, Start Num: 58

Candidate Starts for Racecar_191:

(Start: 58 @131722 has 5 MA's), (73, 131803), (78, 131833), (106, 131968), (107, 131974), (147, 132130), (165, 132202), (194, 132277), (200, 132304), (207, 132334), (209, 132346), (212, 132361),

Gene: Rahel_3 Start: 473, Stop: 1339, Start Num: 26

Candidate Starts for Rahel_3:

(Start: 26 @473 has 109 MA's), (Start: 38 @512 has 1 MA's), (62, 590), (67, 608), (70, 629), (74, 665), (80, 695), (91, 749), (102, 833), (104, 839), (106, 845), (127, 908), (159, 1100), (165, 1127), (174, 1160), (184, 1190), (209, 1292), (210, 1295),

Gene: RayTheFireFly_64 Start: 40609, Stop: 41394, Start Num: 50

Candidate Starts for RayTheFireFly_64:

(Start: 50 @40609 has 22 MA's), (70, 40696), (73, 40726), (74, 40732), (97, 40864), (138, 41044), (150, 41125), (151, 41128), (204, 41326),

Gene: Red305_33 Start: 30387, Stop: 29647, Start Num: 57

Candidate Starts for Red305_33:

(Start: 57 @30387 has 69 MA's), (65, 30363), (71, 30327), (88, 30237), (124, 30081), (135, 30012), (140, 29991), (158, 29889), (162, 29871), (164, 29865), (165, 29859), (189, 29781), (204, 29718), (211, 29688),

Gene: ReginaGlobina_196 Start: 131038, Stop: 131703, Start Num: 57

Candidate Starts for ReginaGlobina_196:

(Start: 57 @131038 has 69 MA's), (73, 131122), (96, 131233), (107, 131293), (129, 131356), (147, 131449), (164, 131515), (165, 131521), (201, 131626),

Gene: Reindeer_49 Start: 37136, Stop: 36339, Start Num: 47

Candidate Starts for Reindeer_49:

(Start: 47 @37136 has 22 MA's), (70, 37052), (71, 37046), (73, 37022), (74, 37016), (78, 36992), (91, 36920), (94, 36890), (102, 36836), (114, 36794), (128, 36755), (143, 36647), (147, 36620), (148, 36617), (159, 36575), (165, 36548), (194, 36455), (195, 36452), (197, 36440), (211, 36377), (218, 36347),

Gene: Rey_55 Start: 38168, Stop: 37368, Start Num: 47

Candidate Starts for Rey_55:

(19, 38258), (Start: 47 @38168 has 22 MA's), (73, 38051), (98, 37889), (102, 37865), (104, 37859), (111, 37832), (130, 37766), (147, 37649), (148, 37646), (165, 37577), (174, 37544), (197, 37469), (209, 37415), (211, 37406), (218, 37376),

Gene: Rizal_3 Start: 473, Stop: 1339, Start Num: 26

Candidate Starts for Rizal_3:

(Start: 26 @473 has 109 MA's), (Start: 38 @512 has 1 MA's), (62, 590), (67, 608), (70, 629), (74, 665), (80, 695), (91, 749), (102, 833), (104, 839), (106, 845), (127, 908), (159, 1100), (165, 1127), (174, 1160), (184, 1190), (209, 1292), (210, 1295),

Gene: Rocha_3 Start: 470, Stop: 1336, Start Num: 26

Candidate Starts for Rocha_3:

(Start: 26 @470 has 109 MA's), (Start: 38 @509 has 1 MA's), (62, 587), (67, 605), (70, 626), (74, 662), (80, 692), (91, 746), (102, 830), (104, 836), (106, 842), (127, 905), (159, 1097), (165, 1124), (174, 1157), (184, 1187), (210, 1292),

Gene: Rockabye_192 Start: 125265, Stop: 125918, Start Num: 59

Candidate Starts for Rockabye_192:

(15, 125112), (17, 125115), (21, 125130), (22, 125133), (27, 125157), (51, 125229), (Start: 52 @125232 has 1 MA's), (Start: 59 @125265 has 12 MA's), (Start: 64 @125280 has 3 MA's), (66, 125289), (73, 125343), (74, 125349), (75, 125355), (107, 125514), (124, 125553), (138, 125628), (140, 125637), (147, 125670), (196, 125829), (211, 125895),

Gene: Ronan_3 Start: 456, Stop: 1322, Start Num: 26

Candidate Starts for Ronan_3:

(Start: 26 @456 has 109 MA's), (Start: 38 @495 has 1 MA's), (62, 573), (67, 591), (70, 612), (74, 648), (80, 678), (91, 732), (102, 816), (104, 822), (106, 828), (123, 876), (127, 891), (159, 1083), (165, 1110), (174, 1143), (184, 1173), (209, 1275), (210, 1278),

Gene: Rose5_32 Start: 28983, Stop: 28231, Start Num: 57

Candidate Starts for Rose5_32:

(Start: 57 @28983 has 69 MA's), (Start: 61 @28977 has 20 MA's), (91, 28815), (97, 28761), (99, 28752), (103, 28728), (106, 28719), (121, 28689), (128, 28662), (132, 28629), (135, 28611), (151, 28515), (152, 28509), (154, 28503), (158, 28488), (162, 28470), (164, 28464), (165, 28458), (184, 28395), (204, 28317), (211, 28287), (220, 28254),

Gene: RoseMarie_53 Start: 39590, Stop: 38793, Start Num: 47

Candidate Starts for RoseMarie_53:

(Start: 47 @39590 has 22 MA's), (70, 39506), (73, 39476), (74, 39470), (91, 39374), (102, 39290), (104, 39284), (114, 39248), (120, 39239), (143, 39101), (147, 39074), (148, 39071), (159, 39029), (165, 39002), (182, 38948), (194, 38909), (197, 38894), (211, 38831), (218, 38801),

Gene: Rossetti_35 Start: 30398, Stop: 29652, Start Num: 57

Candidate Starts for Rossetti_35:

(Start: 57 @30398 has 69 MA's), (Start: 63 @30380 has 2 MA's), (86, 30254), (97, 30173), (103, 30140), (121, 30101), (128, 30074), (132, 30041), (135, 30023), (154, 29915), (158, 29900), (160, 29894), (162, 29882), (164, 29876), (165, 29870), (166, 29867), (184, 29807), (194, 29777), (201, 29747), (214, 29687), (216, 29678),

Gene: Rumpelstiltskin_35 Start: 30394, Stop: 29648, Start Num: 57

Candidate Starts for Rumpelstiltskin_35:

(Start: 57 @30394 has 69 MA's), (Start: 63 @30376 has 2 MA's), (97, 30169), (103, 30136), (121, 30097), (128, 30070), (132, 30037), (135, 30019), (154, 29911), (158, 29896), (160, 29890), (162, 29878), (164, 29872), (165, 29866), (166, 29863), (184, 29803), (194, 29773), (201, 29743), (214, 29683), (216, 29674), (219, 29665),

Gene: SJReid_193 Start: 123863, Stop: 124516, Start Num: 59

Candidate Starts for SJReid_193:

(51, 123827), (Start: 52 @123830 has 1 MA's), (Start: 59 @123863 has 12 MA's), (66, 123887), (73, 123941), (76, 123965), (107, 124112), (138, 124226), (140, 124235), (147, 124268), (164, 124334), (196, 124427), (211, 124493),

Gene: Samba_65 Start: 43857, Stop: 44642, Start Num: 50

Candidate Starts for Samba_65:

(10, 43707), (11, 43716), (39, 43827), (Start: 50 @43857 has 22 MA's), (68, 43935), (73, 43974), (97, 44112), (134, 44274), (138, 44292), (150, 44373), (151, 44376), (164, 44427), (204, 44574),

Gene: Samty_33 Start: 30388, Stop: 29648, Start Num: 57

Candidate Starts for Samty_33:

(Start: 57 @30388 has 69 MA's), (65, 30364), (71, 30328), (88, 30238), (124, 30082), (135, 30013), (140, 29992), (158, 29890), (162, 29872), (164, 29866), (165, 29860), (189, 29782), (204, 29719), (211, 29689),

Gene: Sarkar_44 Start: 24210, Stop: 23518, Start Num: 61

Candidate Starts for Sarkar_44:

(Start: 61 @24210 has 20 MA's), (67, 24186), (Start: 72 @24144 has 1 MA's), (74, 24129), (87, 24075), (95, 24048), (105, 23988), (134, 23874), (164, 23733), (177, 23682), (185, 23652), (191, 23637), (204, 23577), (207, 23568),

Gene: Sarshaun_35 Start: 30159, Stop: 29413, Start Num: 57

Candidate Starts for Sarshaun_35:

(Start: 57 @30159 has 69 MA's), (Start: 63 @30141 has 2 MA's), (84, 30024), (86, 30015), (97, 29934), (103, 29901), (121, 29862), (128, 29835), (132, 29802), (135, 29784), (154, 29676), (158, 29661), (160, 29655), (162, 29643), (164, 29637), (165, 29631), (166, 29628), (184, 29568), (194, 29538), (201, 29508), (214, 29448), (216, 29439), (219, 29430),

Gene: Satis_42 Start: 24206, Stop: 23514, Start Num: 61

Candidate Starts for Satis_42:

(Start: 61 @24206 has 20 MA's), (67, 24182), (Start: 72 @24140 has 1 MA's), (74, 24125), (87, 24071), (95, 24044), (105, 23984), (134, 23870), (164, 23729), (177, 23678), (185, 23648), (191, 23633), (204, 23573), (207, 23564),

Gene: Sauce_3 Start: 477, Stop: 1343, Start Num: 26

Candidate Starts for Sauce_3:

(Start: 26 @477 has 109 MA's), (Start: 38 @516 has 1 MA's), (62, 594), (67, 612), (70, 633), (74, 669), (80, 699), (91, 753), (102, 837), (104, 843), (106, 849), (123, 897), (127, 912), (159, 1104), (165, 1131), (174, 1164), (184, 1194), (209, 1296), (210, 1299),

Gene: ScoobyDoobyDoo_6 Start: 1594, Stop: 2481, Start Num: 24

Candidate Starts for ScoobyDoobyDoo_6:

(Start: 24 @1594 has 1 MA's), (34, 1627), (Start: 38 @1633 has 1 MA's), (Start: 57 @1702 has 69 MA's), (Start: 64 @1723 has 3 MA's), (74, 1792), (80, 1825), (84, 1837), (85, 1840), (102, 1969), (110, 2002), (159, 2221), (161, 2227), (165, 2248), (170, 2269), (171, 2272), (172, 2275), (184, 2311), (187, 2320), (203, 2383), (209, 2410), (211, 2419), (223, 2470),

Gene: ScottMcG_3 Start: 473, Stop: 1339, Start Num: 26

Candidate Starts for ScottMcG_3:

(Start: 26 @473 has 109 MA's), (Start: 38 @512 has 1 MA's), (62, 590), (67, 608), (70, 629), (74, 665), (80, 695), (91, 749), (102, 833), (104, 839), (106, 845), (123, 893), (127, 908), (159, 1100), (165, 1127), (174, 1160), (184, 1190), (209, 1292), (210, 1295),

Gene: Sephiroth_92 Start: 56677, Stop: 57420, Start Num: 64

Candidate Starts for Sephiroth_92:

(Start: 64 @56677 has 3 MA's), (73, 56740), (95, 56857), (122, 56965), (127, 56983), (128, 56989), (138, 57052), (142, 57094), (154, 57151), (156, 57160), (162, 57184), (165, 57196), (184, 57259), (185, 57262), (194, 57289), (205, 57340), (211, 57367), (221, 57412),

Gene: Shaqnato_3 Start: 473, Stop: 1339, Start Num: 26

Candidate Starts for Shaqnato_3:

(Start: 26 @473 has 109 MA's), (Start: 38 @512 has 1 MA's), (62, 590), (67, 608), (70, 629), (74, 665), (80, 695), (91, 749), (102, 833), (104, 839), (106, 845), (123, 893), (127, 908), (159, 1100), (165, 1127), (174, 1160), (184, 1190), (209, 1292), (210, 1295),

Gene: Sheng711_32 Start: 29088, Stop: 28351, Start Num: 59

Candidate Starts for Sheng711_32:

(3, 29478), (45, 29142), (46, 29133), (Start: 59 @29088 has 12 MA's), (Start: 63 @29073 has 2 MA's), (65, 29067), (86, 28947), (105, 28827), (116, 28803), (124, 28785), (128, 28767), (135, 28716), (154, 28608), (158, 28593), (162, 28575), (164, 28569), (165, 28563),

Gene: ShiaLabeouf_3 Start: 473, Stop: 1339, Start Num: 26

Candidate Starts for ShiaLabeouf_3:

(Start: 26 @473 has 109 MA's), (Start: 38 @512 has 1 MA's), (62, 590), (67, 608), (70, 629), (74, 665), (80, 695), (91, 749), (102, 833), (104, 839), (106, 845), (127, 908), (159, 1100), (165, 1127), (174, 1160), (184, 1190), (209, 1292), (210, 1295),

Gene: Shnickers_3 Start: 473, Stop: 1339, Start Num: 26

Candidate Starts for Shnickers_3:

(Start: 26 @473 has 109 MA's), (Start: 38 @512 has 1 MA's), (62, 590), (67, 608), (70, 629), (74, 665), (80, 695), (91, 749), (102, 833), (104, 839), (106, 845), (127, 908), (159, 1100), (165, 1127), (174, 1160), (184, 1190), (209, 1292), (210, 1295),

Gene: SilverDipper_3 Start: 477, Stop: 1343, Start Num: 26

Candidate Starts for SilverDipper_3:

(Start: 26 @477 has 109 MA's), (Start: 38 @516 has 1 MA's), (62, 594), (67, 612), (70, 633), (74, 669), (80, 699), (91, 753), (102, 837), (104, 843), (106, 849), (127, 912), (159, 1104), (165, 1131), (174, 1164), (184, 1194), (209, 1296), (210, 1299),

Gene: Silverleaf_32 Start: 28983, Stop: 28231, Start Num: 57

Candidate Starts for Silverleaf_32:

(Start: 57 @28983 has 69 MA's), (Start: 61 @28977 has 20 MA's), (91, 28815), (97, 28761), (103, 28728), (106, 28719), (121, 28689), (128, 28662), (132, 28629), (135, 28611), (152, 28509), (154, 28503), (158, 28488), (162, 28470), (164, 28464), (165, 28458), (184, 28395), (204, 28317), (211, 28287), (220, 28254),

Gene: Skinny_48 Start: 36357, Stop: 35560, Start Num: 47

Candidate Starts for Skinny_48:

(Start: 47 @36357 has 22 MA's), (70, 36273), (73, 36243), (74, 36237), (91, 36141), (94, 36111), (102, 36057), (111, 36024), (143, 35868), (147, 35841), (148, 35838), (159, 35796), (165, 35769), (182, 35715), (194, 35676), (197, 35661), (211, 35598), (218, 35568),

Gene: SlimJimmy_46 Start: 35911, Stop: 35114, Start Num: 47

Candidate Starts for SlimJimmy_46:

(Start: 47 @35911 has 22 MA's), (70, 35827), (73, 35797), (74, 35791), (91, 35695), (94, 35665), (102, 35611), (111, 35578), (143, 35422), (147, 35395), (148, 35392), (159, 35350), (165, 35323), (182, 35269), (194, 35230), (197, 35215), (211, 35152), (218, 35122),

Gene: SmallFry_3 Start: 473, Stop: 1339, Start Num: 26

Candidate Starts for SmallFry_3:

(Start: 26 @473 has 109 MA's), (Start: 38 @512 has 1 MA's), (62, 590), (67, 608), (70, 629), (74, 665), (80, 695), (91, 749), (102, 833), (104, 839), (106, 845), (127, 908), (159, 1100), (165, 1127), (174, 1160), (184, 1190), (209, 1292), (210, 1295),

Gene: Smoothie_138 Start: 75782, Stop: 76489, Start Num: 55

Candidate Starts for Smoothie_138:

(Start: 55 @75782 has 21 MA's), (76, 75890), (84, 75914), (96, 75962), (141, 76166), (152, 76226), (211, 76448),

Gene: Snenia_33 Start: 30388, Stop: 29648, Start Num: 57

Candidate Starts for Snenia_33:

(Start: 57 @30388 has 69 MA's), (65, 30364), (71, 30328), (88, 30238), (124, 30082), (135, 30013), (140, 29992), (158, 29890), (162, 29872), (164, 29866), (165, 29860), (189, 29782), (204, 29719), (211, 29689),

Gene: SoJulia_36 Start: 30387, Stop: 29641, Start Num: 57

Candidate Starts for SoJulia_36:

(Start: 57 @30387 has 69 MA's), (Start: 63 @30369 has 2 MA's), (97, 30162), (103, 30129), (121, 30090), (128, 30063), (132, 30030), (135, 30012), (154, 29904), (158, 29889), (160, 29883), (162, 29871), (164, 29865), (165, 29859), (166, 29856), (184, 29796), (194, 29766), (201, 29736), (214, 29676), (216, 29667), (219, 29658),

Gene: Soap141_35 Start: 30159, Stop: 29413, Start Num: 57

Candidate Starts for Soap141_35:

(Start: 57 @30159 has 69 MA's), (Start: 63 @30141 has 2 MA's), (84, 30024), (86, 30015), (97, 29934), (103, 29901), (121, 29862), (128, 29835), (132, 29802), (135, 29784), (154, 29676), (158, 29661),

(160, 29655), (162, 29643), (164, 29637), (165, 29631), (166, 29628), (184, 29568), (194, 29538), (201, 29508), (214, 29448), (216, 29439), (219, 29430),

Gene: Spec_3 Start: 473, Stop: 1339, Start Num: 26

Candidate Starts for Spec_3:

(Start: 26 @473 has 109 MA's), (Start: 38 @512 has 1 MA's), (62, 590), (67, 608), (70, 629), (74, 665), (80, 695), (91, 749), (102, 833), (104, 839), (106, 845), (127, 908), (159, 1100), (165, 1127), (174, 1160), (184, 1190), (209, 1292), (210, 1295),

Gene: Specks_3 Start: 473, Stop: 1339, Start Num: 26

Candidate Starts for Specks_3:

(Start: 26 @473 has 109 MA's), (Start: 38 @512 has 1 MA's), (62, 590), (67, 608), (70, 629), (74, 665), (80, 695), (91, 749), (102, 833), (104, 839), (106, 845), (123, 893), (127, 908), (150, 1067), (159, 1100), (165, 1127), (174, 1160), (184, 1190), (210, 1295),

Gene: SpeedDemon_1010 Start: 67850, Stop: 68530, Start Num: 59

Candidate Starts for SpeedDemon_1010:

(Start: 57 @67847 has 69 MA's), (Start: 59 @67850 has 12 MA's), (73, 67928), (76, 67952), (94, 68015), (97, 68039), (144, 68240), (165, 68336), (215, 68522),

Gene: Sprinklers_3 Start: 456, Stop: 1322, Start Num: 26

Candidate Starts for Sprinklers_3:

(Start: 26 @456 has 109 MA's), (Start: 38 @495 has 1 MA's), (62, 573), (67, 591), (70, 612), (74, 648), (80, 678), (91, 732), (102, 816), (104, 822), (106, 828), (123, 876), (127, 891), (159, 1083), (165, 1110), (174, 1143), (184, 1173), (209, 1275), (210, 1278),

Gene: Spud_3 Start: 473, Stop: 1339, Start Num: 26

Candidate Starts for Spud_3:

(Start: 26 @473 has 109 MA's), (Start: 38 @512 has 1 MA's), (62, 590), (67, 608), (70, 629), (74, 665), (80, 695), (91, 749), (102, 833), (104, 839), (106, 845), (127, 908), (159, 1100), (165, 1127), (174, 1160), (184, 1190), (209, 1292), (210, 1295),

Gene: StephanieG_3 Start: 473, Stop: 1339, Start Num: 26

Candidate Starts for StephanieG_3:

(Start: 26 @473 has 109 MA's), (Start: 38 @512 has 1 MA's), (62, 590), (67, 608), (70, 629), (74, 665), (80, 695), (91, 749), (102, 833), (104, 839), (106, 845), (127, 908), (159, 1100), (165, 1127), (174, 1160), (184, 1190), (210, 1295),

Gene: Stewart25555_184 Start: 132128, Stop: 132799, Start Num: 54

Candidate Starts for Stewart25555_184:

(Start: 54 @132128 has 4 MA's), (65, 132167), (73, 132227), (96, 132338), (107, 132398), (129, 132461), (147, 132554), (164, 132620), (201, 132731),

Gene: StubbySaigey_3 Start: 477, Stop: 1343, Start Num: 26

Candidate Starts for StubbySaigey_3:

(Start: 26 @477 has 109 MA's), (Start: 38 @516 has 1 MA's), (62, 594), (67, 612), (70, 633), (74, 669), (80, 699), (91, 753), (102, 837), (104, 843), (106, 849), (127, 912), (159, 1104), (165, 1131), (174, 1164), (184, 1194), (209, 1296), (210, 1299),

Gene: Substance289_3 Start: 473, Stop: 1339, Start Num: 26

Candidate Starts for Substance289_3:

(Start: 26 @473 has 109 MA's), (Start: 38 @512 has 1 MA's), (62, 590), (67, 608), (70, 629), (74, 665), (80, 695), (91, 749), (102, 833), (104, 839), (106, 845), (127, 908), (159, 1100), (165, 1127), (174,

1160), (184, 1190), (209, 1292), (210, 1295),

Gene: Syleon_95 Start: 56627, Stop: 57370, Start Num: 64

Candidate Starts for Syleon_95:

(Start: 64 @56627 has 3 MA's), (73, 56690), (95, 56807), (122, 56915), (127, 56933), (128, 56939), (138, 57002), (154, 57101), (156, 57110), (162, 57134), (165, 57146), (184, 57209), (185, 57212), (194, 57239), (205, 57290), (211, 57317), (221, 57362),

Gene: Tainan_3 Start: 473, Stop: 1339, Start Num: 26

Candidate Starts for Tainan_3:

(Start: 26 @473 has 109 MA's), (Start: 38 @512 has 1 MA's), (62, 590), (67, 608), (70, 629), (74, 665), (80, 695), (91, 749), (102, 833), (104, 839), (106, 845), (127, 908), (159, 1100), (165, 1127), (174, 1160), (184, 1190), (209, 1292), (210, 1295),

Gene: Talia1610_191 Start: 132018, Stop: 132668, Start Num: 58

Candidate Starts for Talia1610_191:

(Start: 58 @132018 has 5 MA's), (73, 132099), (78, 132129), (106, 132264), (107, 132270), (147, 132426), (164, 132492), (165, 132498), (194, 132573), (200, 132600), (212, 132657),

Gene: Talos_116 Start: 61418, Stop: 62107, Start Num: 61

Candidate Starts for Talos_116:

(Start: 61 @61418 has 20 MA's), (67, 61442), (70, 61463), (73, 61493), (74, 61499), (75, 61505), (97, 61616), (103, 61649), (125, 61712), (145, 61823), (165, 61916), (169, 61925), (181, 61961), (191, 61997), (208, 62075),

Gene: Teardrop_3 Start: 473, Stop: 1339, Start Num: 26

Candidate Starts for Teardrop_3:

(Start: 26 @473 has 109 MA's), (Start: 38 @512 has 1 MA's), (62, 590), (67, 608), (70, 629), (74, 665), (80, 695), (91, 749), (102, 833), (104, 839), (106, 845), (127, 908), (159, 1100), (165, 1127), (174, 1160), (184, 1190), (209, 1292), (210, 1295),

Gene: Tonenili_3 Start: 467, Stop: 1318, Start Num: 26

Candidate Starts for Tonenili_3:

(Start: 26 @467 has 109 MA's), (62, 569), (67, 587), (70, 608), (74, 644), (80, 674), (91, 728), (98, 788), (99, 791), (102, 812), (104, 818), (106, 824), (111, 845), (123, 872), (127, 887), (158, 1076), (159, 1079), (165, 1106), (174, 1139), (209, 1271), (210, 1274),

Gene: Toniann_137 Start: 75311, Stop: 76018, Start Num: 55

Candidate Starts for Toniann_137:

(Start: 55 @75311 has 21 MA's), (76, 75419), (84, 75443), (96, 75491), (211, 75977),

Gene: Tortoise16_2 Start: 473, Stop: 1339, Start Num: 26

Candidate Starts for Tortoise16_2:

(Start: 26 @473 has 109 MA's), (Start: 38 @512 has 1 MA's), (62, 590), (67, 608), (70, 629), (74, 665), (80, 695), (91, 749), (102, 833), (104, 839), (106, 845), (127, 908), (159, 1100), (165, 1127), (174, 1160), (184, 1190), (209, 1292), (210, 1295),

Gene: Tourach_35 Start: 30120, Stop: 29374, Start Num: 57

Candidate Starts for Tourach_35:

(Start: 57 @30120 has 69 MA's), (Start: 63 @30102 has 2 MA's), (86, 29976), (97, 29895), (103, 29862), (121, 29823), (128, 29796), (132, 29763), (135, 29745), (154, 29637), (158, 29622), (162, 29604), (164, 29598), (165, 29592), (166, 29589), (184, 29529), (194, 29499), (201, 29469), (214, 29409), (216, 29400), (219, 29391),

Gene: Towmatter_88 Start: 61086, Stop: 61766, Start Num: 57

Candidate Starts for Towmatter_88:

(Start: 57 @61086 has 69 MA's), (73, 61170), (75, 61182), (76, 61194), (108, 61335), (156, 61536), (177, 61611),

Gene: TpudiCK_49 Start: 35927, Stop: 35130, Start Num: 47

Candidate Starts for TpudiCK_49:

(Start: 47 @35927 has 22 MA's), (70, 35843), (73, 35813), (74, 35807), (91, 35711), (94, 35681), (102, 35627), (111, 35594), (143, 35438), (147, 35411), (148, 35408), (159, 35366), (165, 35339), (182, 35285), (194, 35246), (197, 35231), (211, 35168), (218, 35138),

Gene: Trax_88 Start: 55858, Stop: 56592, Start Num: 63

Candidate Starts for Trax_88:

(Start: 63 @55858 has 2 MA's), (Start: 64 @55861 has 3 MA's), (73, 55924), (78, 55954), (105, 56101), (127, 56167), (129, 56179), (138, 56236), (151, 56323), (154, 56335), (162, 56368), (165, 56380), (184, 56443), (197, 56488), (212, 56557),

Gene: TriFive_33 Start: 30387, Stop: 29647, Start Num: 57

Candidate Starts for TriFive_33:

(Start: 57 @30387 has 69 MA's), (65, 30363), (71, 30327), (88, 30237), (124, 30081), (135, 30012), (140, 29991), (158, 29889), (162, 29871), (164, 29865), (165, 29859), (189, 29781), (204, 29718), (211, 29688),

Gene: Trinitium_3 Start: 473, Stop: 1339, Start Num: 26

Candidate Starts for Trinitium_3:

(Start: 26 @473 has 109 MA's), (Start: 38 @512 has 1 MA's), (62, 590), (67, 608), (70, 629), (74, 665), (80, 695), (91, 749), (102, 833), (104, 839), (106, 845), (127, 908), (159, 1100), (165, 1127), (174, 1160), (184, 1190), (209, 1292), (210, 1295),

Gene: Turret_3 Start: 456, Stop: 1322, Start Num: 26

Candidate Starts for Turret_3:

(Start: 26 @456 has 109 MA's), (Start: 38 @495 has 1 MA's), (62, 573), (67, 591), (70, 612), (74, 648), (80, 678), (91, 732), (102, 816), (104, 822), (106, 828), (127, 891), (159, 1083), (165, 1110), (174, 1143), (184, 1173), (209, 1275), (210, 1278),

Gene: TyDawg_47 Start: 35928, Stop: 35131, Start Num: 47

Candidate Starts for TyDawg_47:

(Start: 47 @35928 has 22 MA's), (70, 35844), (73, 35814), (74, 35808), (91, 35712), (94, 35682), (102, 35628), (111, 35595), (143, 35439), (147, 35412), (148, 35409), (159, 35367), (165, 35340), (182, 35286), (194, 35247), (197, 35232), (211, 35169), (218, 35139),

Gene: Tyke_3 Start: 473, Stop: 1339, Start Num: 26

Candidate Starts for Tyke_3:

(Start: 26 @473 has 109 MA's), (Start: 38 @512 has 1 MA's), (62, 590), (67, 608), (70, 629), (74, 665), (80, 695), (91, 749), (102, 833), (104, 839), (106, 845), (127, 908), (159, 1100), (165, 1127), (174, 1160), (184, 1190), (209, 1292), (210, 1295),

Gene: Tyson_32 Start: 28983, Stop: 28231, Start Num: 57

Candidate Starts for Tyson_32:

(Start: 57 @28983 has 69 MA's), (Start: 61 @28977 has 20 MA's), (91, 28815), (97, 28761), (99, 28752), (103, 28728), (106, 28719), (121, 28689), (128, 28662), (132, 28629), (135, 28611), (152, 28509), (154, 28503), (158, 28488), (162, 28470), (164, 28464), (165, 28458), (184, 28395), (204,

28317), (211, 28287), (220, 28254),

Gene: UPIE_32 Start: 28975, Stop: 28229, Start Num: 61

Candidate Starts for UPIE_32:

(Start: 57 @28981 has 69 MA's), (Start: 61 @28975 has 20 MA's), (91, 28813), (97, 28759), (99, 28750), (103, 28726), (106, 28717), (121, 28687), (128, 28660), (132, 28627), (135, 28609), (151, 28513), (152, 28507), (154, 28501), (158, 28486), (162, 28468), (164, 28462), (165, 28456), (184, 28393), (204, 28315), (211, 28285), (220, 28252),

Gene: Underpass_35 Start: 30128, Stop: 29382, Start Num: 57

Candidate Starts for Underpass_35:

(Start: 57 @30128 has 69 MA's), (Start: 63 @30110 has 2 MA's), (77, 30017), (97, 29903), (103, 29870), (121, 29831), (128, 29804), (132, 29771), (135, 29753), (154, 29645), (158, 29630), (160, 29624), (162, 29612), (164, 29606), (165, 29600), (166, 29597), (184, 29537), (194, 29507), (201, 29477), (214, 29417), (216, 29408), (219, 29399),

Gene: ValleyTerrace_3 Start: 477, Stop: 1343, Start Num: 26

Candidate Starts for ValleyTerrace_3:

(Start: 26 @477 has 109 MA's), (Start: 38 @516 has 1 MA's), (62, 594), (67, 612), (70, 633), (74, 669), (80, 699), (91, 753), (102, 837), (104, 843), (106, 849), (127, 912), (159, 1104), (165, 1131), (174, 1164), (184, 1194), (209, 1296), (210, 1299),

Gene: VanLee_110 Start: 57959, Stop: 58672, Start Num: 61

Candidate Starts for VanLee_110:

(35, 57878), (51, 57920), (Start: 53 @57929 has 5 MA's), (Start: 57 @57953 has 69 MA's), (Start: 61 @57959 has 20 MA's), (70, 58004), (75, 58046), (82, 58079), (103, 58184), (112, 58211), (144, 58346), (146, 58361), (150, 58382), (151, 58385), (211, 58613), (215, 58628),

Gene: Vetric_35 Start: 30132, Stop: 29386, Start Num: 57

Candidate Starts for Vetric_35:

(Start: 57 @30132 has 69 MA's), (Start: 63 @30114 has 2 MA's), (97, 29907), (103, 29874), (121, 29835), (128, 29808), (132, 29775), (135, 29757), (154, 29649), (158, 29634), (160, 29628), (162, 29616), (164, 29610), (165, 29604), (166, 29601), (184, 29541), (194, 29511), (201, 29481), (214, 29421), (216, 29412), (219, 29403),

Gene: Vortrix_3 Start: 467, Stop: 1318, Start Num: 26

Candidate Starts for Vortrix_3:

(Start: 26 @467 has 109 MA's), (62, 569), (67, 587), (70, 608), (74, 644), (80, 674), (91, 728), (98, 788), (102, 812), (104, 818), (106, 824), (111, 845), (123, 872), (127, 887), (158, 1076), (159, 1079), (165, 1106), (174, 1139), (201, 1232), (209, 1271), (210, 1274),

Gene: WaddleDee_178 Start: 133225, Stop: 133899, Start Num: 54

Candidate Starts for WaddleDee_178:

(Start: 54 @133225 has 4 MA's), (65, 133267), (73, 133327), (96, 133438), (107, 133498), (147, 133654), (164, 133720), (201, 133831),

Gene: Wally_3 Start: 477, Stop: 1343, Start Num: 26

Candidate Starts for Wally_3:

(Start: 26 @477 has 109 MA's), (Start: 38 @516 has 1 MA's), (62, 594), (67, 612), (70, 633), (74, 669), (80, 699), (91, 753), (102, 837), (104, 843), (106, 849), (127, 912), (159, 1104), (165, 1131), (174, 1164), (184, 1194), (209, 1296), (210, 1299),

Gene: Walrus_63 Start: 40796, Stop: 41581, Start Num: 50

Candidate Starts for Walrus_63:

(10, 40646), (11, 40655), (39, 40766), (Start: 50 @40796 has 22 MA's), (73, 40913), (74, 40919), (95, 41030), (97, 41051), (104, 41087), (134, 41213), (138, 41231), (150, 41312), (151, 41315), (204, 41513),

Gene: Wamburgxpress_32 Start: 28996, Stop: 28244, Start Num: 57

Candidate Starts for Wamburgxpress_32:

(Start: 57 @28996 has 69 MA's), (Start: 61 @28990 has 20 MA's), (91, 28828), (97, 28774), (99, 28765), (103, 28741), (106, 28732), (121, 28702), (128, 28675), (132, 28642), (135, 28624), (151, 28528), (152, 28522), (154, 28516), (158, 28501), (162, 28483), (164, 28477), (165, 28471), (184, 28408), (204, 28330), (211, 28300), (220, 28267),

Gene: Whirlwind_34 Start: 30135, Stop: 29395, Start Num: 57

Candidate Starts for Whirlwind_34:

(Start: 57 @30135 has 69 MA's), (65, 30111), (71, 30075), (88, 29985), (124, 29829), (135, 29760), (140, 29739), (158, 29637), (162, 29619), (164, 29613), (165, 29607), (204, 29466), (211, 29436),

Gene: Wigglewigggle_35 Start: 30158, Stop: 29412, Start Num: 57

Candidate Starts for Wigglewigggle_35:

(Start: 57 @30158 has 69 MA's), (Start: 63 @30140 has 2 MA's), (84, 30023), (86, 30014), (97, 29933), (103, 29900), (121, 29861), (128, 29834), (132, 29801), (135, 29783), (154, 29675), (158, 29660), (160, 29654), (162, 29642), (164, 29636), (165, 29630), (166, 29627), (184, 29567), (194, 29537), (201, 29507), (214, 29447), (216, 29438), (219, 29429),

Gene: Wildcat_58 Start: 41513, Stop: 40764, Start Num: 53

Candidate Starts for Wildcat_58:

(6, 41750), (7, 41738), (8, 41702), (13, 41657), (17, 41633), (40, 41549), (Start: 53 @41513 has 5 MA's), (62, 41474), (69, 41441), (Start: 72 @41414 has 1 MA's), (74, 41399), (78, 41375), (105, 41207), (109, 41192), (128, 41135), (151, 41033), (165, 40976), (168, 40964), (194, 40883), (201, 40853), (203, 40841), (209, 40814), (211, 40805), (212, 40799), (220, 40772),

Gene: Wilder_35 Start: 30131, Stop: 29385, Start Num: 57

Candidate Starts for Wilder_35:

(Start: 57 @30131 has 69 MA's), (Start: 63 @30113 has 2 MA's), (84, 29996), (86, 29987), (97, 29906), (103, 29873), (121, 29834), (128, 29807), (132, 29774), (135, 29756), (154, 29648), (158, 29633), (160, 29627), (162, 29615), (164, 29609), (165, 29603), (166, 29600), (184, 29540), (194, 29510), (201, 29480), (214, 29420), (216, 29411), (219, 29402),

Gene: WilliamBoone_135 Start: 72980, Stop: 73684, Start Num: 55

Candidate Starts for WilliamBoone_135:

(35, 72908), (43, 72926), (49, 72944), (Start: 55 @72980 has 21 MA's), (76, 73088), (84, 73112), (96, 73160), (141, 73364), (152, 73424), (169, 73493), (211, 73646),

Gene: Winky_35 Start: 30126, Stop: 29380, Start Num: 57

Candidate Starts for Winky_35:

(Start: 57 @30126 has 69 MA's), (Start: 63 @30108 has 2 MA's), (97, 29901), (103, 29868), (121, 29829), (128, 29802), (132, 29769), (135, 29751), (154, 29643), (158, 29628), (160, 29622), (162, 29610), (164, 29604), (165, 29598), (166, 29595), (184, 29535), (194, 29505), (201, 29475), (214, 29415), (216, 29406), (219, 29397),

Gene: Wisp_64 Start: 41649, Stop: 42434, Start Num: 50

Candidate Starts for Wisp_64:

(10, 41499), (11, 41508), (39, 41619), (Start: 50 @41649 has 22 MA's), (68, 41727), (73, 41766), (74, 41772), (97, 41904), (134, 42066), (138, 42084), (150, 42165), (151, 42168), (164, 42219), (204, 42366),

Gene: Wyatt2_32 Start: 28983, Stop: 28231, Start Num: 57

Candidate Starts for Wyatt2_32:

(Start: 57 @28983 has 69 MA's), (Start: 61 @28977 has 20 MA's), (91, 28815), (97, 28761), (99, 28752), (103, 28728), (106, 28719), (121, 28689), (128, 28662), (132, 28629), (135, 28611), (151, 28515), (152, 28509), (154, 28503), (158, 28488), (162, 28470), (164, 28464), (165, 28458), (184, 28395), (204, 28317), (211, 28287), (220, 28254),

Gene: Yassified_3 Start: 477, Stop: 1343, Start Num: 26

Candidate Starts for Yassified_3:

(Start: 26 @477 has 109 MA's), (Start: 38 @516 has 1 MA's), (62, 594), (67, 612), (70, 633), (74, 669), (80, 699), (91, 753), (102, 837), (104, 843), (106, 849), (123, 897), (127, 912), (159, 1104), (165, 1131), (174, 1164), (184, 1194), (210, 1299),

Gene: YoungMoneyMata_3 Start: 473, Stop: 1339, Start Num: 26

Candidate Starts for YoungMoneyMata_3:

(Start: 26 @473 has 109 MA's), (Start: 38 @512 has 1 MA's), (62, 590), (67, 608), (70, 629), (74, 665), (80, 695), (91, 749), (102, 833), (104, 839), (106, 845), (127, 908), (159, 1100), (165, 1127), (174, 1160), (184, 1190), (209, 1292), (210, 1295),

Gene: Yvonnetastic_147 Start: 80424, Stop: 81140, Start Num: 60

Candidate Starts for Yvonnetastic_147:

(Start: 60 @80424 has 2 MA's), (66, 80445), (76, 80523), (80, 80538), (84, 80547), (90, 80565), (98, 80625), (105, 80658), (129, 80730), (137, 80775), (155, 80865), (157, 80874), (180, 80964), (209, 81087),

Gene: Zakai_35 Start: 30382, Stop: 29636, Start Num: 57

Candidate Starts for Zakai_35:

(Start: 57 @30382 has 69 MA's), (Start: 63 @30364 has 2 MA's), (86, 30238), (97, 30157), (103, 30124), (121, 30085), (128, 30058), (132, 30025), (135, 30007), (154, 29899), (158, 29884), (162, 29866), (164, 29860), (165, 29854), (166, 29851), (178, 29806), (184, 29791), (194, 29761), (201, 29731), (214, 29671), (216, 29662),

Gene: Zarbodnamra_65 Start: 41043, Stop: 41828, Start Num: 50

Candidate Starts for Zarbodnamra_65:

(10, 40893), (11, 40902), (39, 41013), (Start: 50 @41043 has 22 MA's), (68, 41121), (73, 41160), (74, 41166), (97, 41298), (134, 41460), (138, 41478), (150, 41559), (151, 41562), (164, 41613), (204, 41760),

Gene: Zaria_32 Start: 28998, Stop: 28246, Start Num: 57

Candidate Starts for Zaria_32:

(Start: 57 @28998 has 69 MA's), (Start: 61 @28992 has 20 MA's), (91, 28830), (97, 28776), (99, 28767), (103, 28743), (106, 28734), (121, 28704), (128, 28677), (132, 28644), (135, 28626), (151, 28530), (152, 28524), (154, 28518), (158, 28503), (162, 28485), (164, 28479), (165, 28473), (184, 28410), (204, 28332), (211, 28302), (220, 28269),

Gene: ZhongYanYuan_34 Start: 29947, Stop: 29201, Start Num: 57

Candidate Starts for ZhongYanYuan_34:

(Start: 57 @29947 has 69 MA's), (97, 29722), (103, 29689), (121, 29650), (128, 29623), (132, 29590), (135, 29572), (154, 29464), (158, 29449), (160, 29443), (162, 29431), (164, 29425), (165, 29419),

(166, 29416), (184, 29356), (194, 29326), (201, 29296), (214, 29236), (216, 29227), (219, 29218),

Gene: ZiggyZoo_65 Start: 42702, Stop: 43487, Start Num: 50

Candidate Starts for ZiggyZoo_65:

(4, 42411), (10, 42552), (11, 42561), (39, 42672), (Start: 50 @42702 has 22 MA's), (73, 42819), (74, 42825), (97, 42957), (105, 42996), (134, 43119), (138, 43137), (150, 43218), (151, 43221), (164, 43272), (204, 43419),

Gene: Zooman_191 Start: 113275, Stop: 114018, Start Num: 56

Candidate Starts for Zooman_191:

(Start: 56 @113275 has 2 MA's), (94, 113473), (120, 113572), (133, 113644), (136, 113659), (149, 113740), (159, 113779), (165, 113806), (205, 113950), (207, 113956),