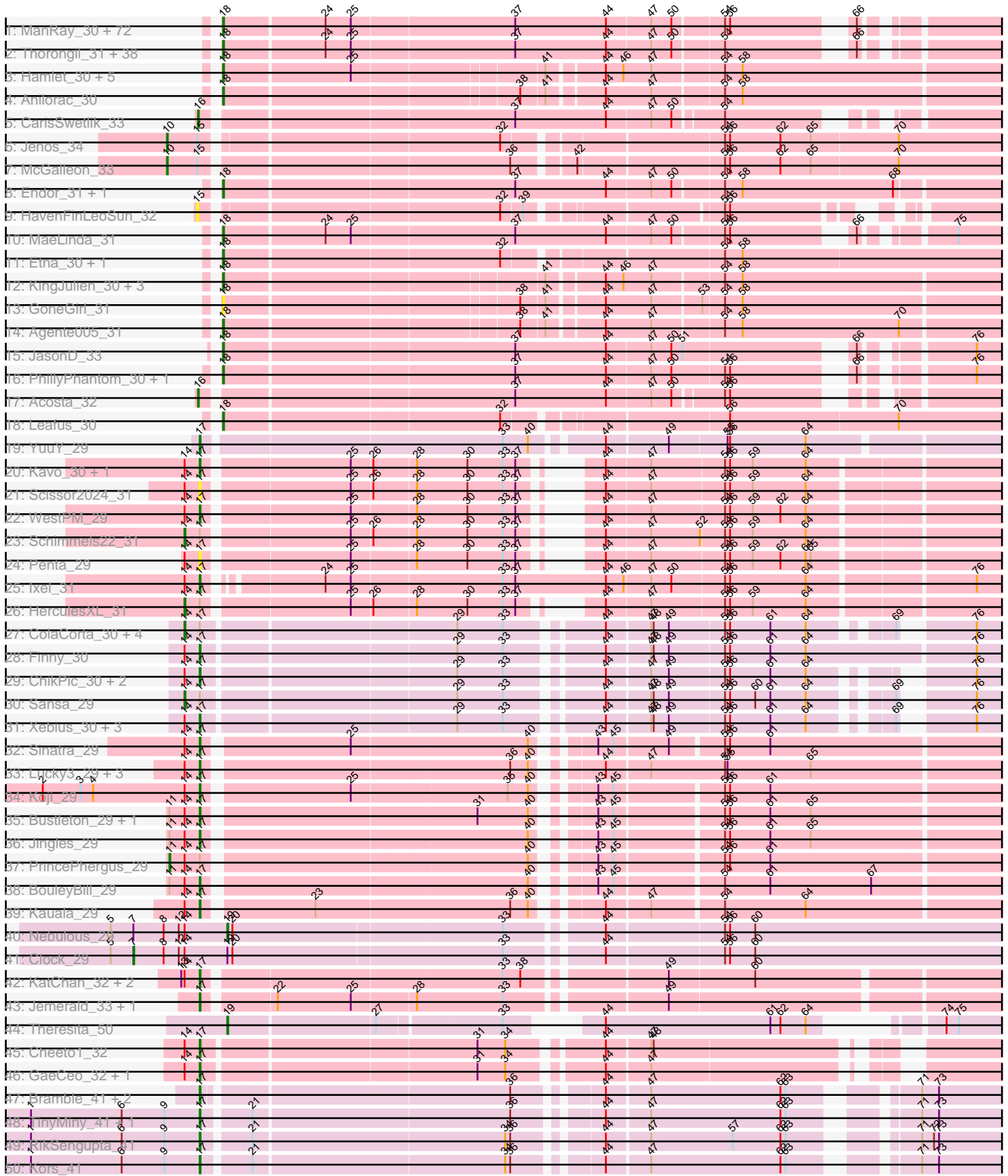


Pham 300986



Note: Tracks are now grouped by subcluster and scaled. Switching in subcluster is indicated by changes in track color. Track scale is now set by default to display the region 30 bp upstream of start 1 to 30 bp downstream of the last possible start. If this default region is judged to be packed too tightly with annotated starts, the track will be further scaled to only show that region of the ORF with annotated starts. This action will be indicated by adding "Zoomed" to the title. For starts, yellow indicates the location of called starts comprised solely of Glimmer/GeneMark auto-annotations, green indicates the location of called starts with at least 1 manual gene annotation.

Pham 300986 Report

This analysis was run 06/08/26 on database version 649.

Pham number 300986 has 192 members, 14 are drafts.

Phages represented in each track:

- Track 1 : ManRay_30, SonOfLevi_30, Strathdee_31, Asta_30, KannH_30, TeddyBear_30, Etta_30, BeautPeep30_31, BonesMcCoy_31, Phiderman_31, Christoph_30, Erla_30, MrWorldwide_31, Duocatuli_30, Phireproof_31, Espinosa_30, CoraRita_31, MillyPhilly_31, Nattles_30, HankSprout_31, StirfryIV_30, Jerbirus_31, Kurt1_31, Gershwin_30, Robinson_31, AranulaLuti_30, BigRedClifford_31, TatarkaPM_31, TinSulphur_31, Janus167_30, Clancy_30, GoingMerry_31, Kouch_30, ParleG_31, Dothraki_31, Aubergine_30, Pherferi_31, SolidSnake_32, Bonino_30, Gargoyle_31, Rog141_30, Rapheph_31, HanSolo_30, Shee_31, KellyGreen_31, Blage_31, Calix_30, Winzigespinne_30, Stanktossa_31, Tenda_30, NickSell_31, Baines_30, Chamuel_30, Martin_32, Raptor_31, Convict_31, Kale_30, Chako_30, Inventa_31, Pocket_30, Byron23_31, Exploradora_30, Gelo_30, Klimt_30, Ioannes_31, PhredFlintston_31, Thompsone_31, Knox_31, Oats_30, Gubbabump_30, JasperRussell_30, Garey24_30, Figueroism_31
- Track 2 : Thorongil_31, Ludgate_31, Velene_31, Oxtober96_31, Alyxandracam_31, Ilzat_30, Antoinette_31, HungryHenry_30, Symere_30, JeriBeth_30, Phriends_31, AxiPup_31, Teagan_31, Superfresh_31, RosieMae_30, Nagem_31, ShaiHulud_31, PuppyEggo_31, Vispistious_31, Peep_31, Delphidian_31, AlexAdler_31, Papafritta_30, OldNelly_31, Bandik_31, Dave_31, Riyhil_31, Sedgewig_30, SJay_31, Den3_31, WildNOut_31, Benjalauren_31, StingRay_30, Lovelyunicorn_31, Greys_31, Merida02_32, Zada_31, SoilGremlin_31, Renzie_31
- Track 3 : Hamlet_30, Peppino_30, Balsa_30, Redfield_30, BeeBee8_31, Schnapsidee_30
- Track 4 : Anilorac_30
- Track 5 : CarisSwetlik_33
- Track 6 : Jenos_34
- Track 7 : McGalleon_33
- Track 8 : Endor_31, MonChoix_29
- Track 9 : HavenFinLeoSun_32
- Track 10 : MaeLinda_31
- Track 11 : Etna_30, FarmerDoug_30
- Track 12 : KingJulien_30, Stormbreaker8_30, Soror1_30, GardenB_30
- Track 13 : GoneGirl_31
- Track 14 : Agente005_31
- Track 15 : JasonD_33
- Track 16 : PhillyPhantom_30, Raccoon_30
- Track 17 : Acosta_32
- Track 18 : Leafus_30

- Track 19 : YuuY_29
- Track 20 : Kavo_30, Tinyman4_31
- Track 21 : Scissor2024_31
- Track 22 : WestPM_29
- Track 23 : Schimmels22_31
- Track 24 : Penta_29
- Track 25 : Ixel_31
- Track 26 : HerculesXL_31
- Track 27 : ColaCorta_30, Andromedas_30, Eleri_30, Glamour_29, PSirce_30
- Track 28 : Finny_30
- Track 29 : ChikPic_30, MCubed_30, Phanita_30
- Track 30 : Sansa_29
- Track 31 : Xebius_30, Saratos_30, Zenitsu_30, Shamu_30
- Track 32 : Sinatra_29
- Track 33 : Lucky3_29, Guetzie_29, SirVictor_29, Golden_29
- Track 34 : Koji_29
- Track 35 : Bustleton_29, Pherbot_29
- Track 36 : Jingles_29
- Track 37 : PrincePhergus_29
- Track 38 : BouleyBill_29
- Track 39 : Kauala_29
- Track 40 : Nebulous_29
- Track 41 : Clock_29
- Track 42 : KatChan_32, Luna18_32, Chepli_32
- Track 43 : Jemerald_33, Juicer_33
- Track 44 : Theresita_50
- Track 45 : Cheeto1_32
- Track 46 : GaeCeo_32, ChickenKing_31
- Track 47 : Bramble_41, LordBart_41, Ajin_41
- Track 48 : TinyMiny_41, Sparcetus_41
- Track 49 : RikSengupta_41
- Track 50 : Kors_41

Summary of Final Annotations (See graph section above for start numbers):

The start number called the most often in the published annotations is 18, it was called in 125 of the 178 non-draft genes in the pham.

Genes that call this "Most Annotated" start:

- Agente005_31, AlexAdler_31, Alyxandracam_31, Anilorac_30, Antoinette_31, AranulaLuti_30, Asta_30, Aubergine_30, AxiPup_31, Baines_30, Balsa_30, Bandik_31, BeautPeep30_31, BeeBee8_31, Benjalauren_31, BigRedClifford_31, Blage_31, BonesMcCoy_31, Bonino_30, Byron23_31, Calix_30, Chako_30, Chamuel_30, Christoph_30, Clancy_30, Convict_31, CoraRita_31, Dave_31, Delphidian_31, Den3_31, Dothraki_31, Duocatuli_30, Endor_31, Erla_30, Espinosa_30, Etna_30, Etta_30, Exploradora_30, FarmerDoug_30, Figueroism_31, GardenB_30, Garey24_30, Gargoyle_31, Gelo_30, Gershwin_30, GoingMerry_31, GoneGirl_31, Greys_31, Gubbabump_30, Hamlet_30, HanSolo_30, HankSprout_31, HungryHenry_30, Ilzat_30, Inventa_31, Ioannes_31, Janus167_30, JasonD_33, JasperRussell_30, Jerbirus_31, JeriBeth_30, Kale_30, KannH_30, KellyGreen_31,

KingJulien_30, Klimt_30, Knox_31, Kouch_30, Kurt1_31, Leafus_30, Lovelyunicorn_31, Ludgate_31, MaeLinda_31, ManRay_30, Martin_32, Merida02_32, MillyPhilly_31, MonChoix_29, MrWorldwide_31, Nagem_31, Nattles_30, NickSell_31, Oats_30, OldNelly_31, Oxtober96_31, Papafritta_30, ParleG_31, Peep_31, Peppino_30, Pherferi_31, Phiderman_31, PhillyPhantom_30, Phireproof_31, PhredFlintston_31, Phriends_31, Pocket_30, PuppyEggo_31, Raccoon_30, Rappheph_31, Raptor_31, Redfield_30, Renzie_31, Riyhil_31, Robinson_31, Rog141_30, RosieMae_30, SJay_31, Schnapsidee_30, Sedgewig_30, ShaiHulud_31, Shee_31, SoilGremlin_31, SolidSnake_32, SonOfLevi_30, Soror1_30, Stanktossa_31, StingRay_30, StirfryIV_30, Stormbreaker8_30, Strathdee_31, Superfresh_31, Symere_30, TatarkaPM_31, Teagan_31, TeddyBear_30, Tenda_30, Thompsone_31, Thorongil_31, TinSulphur_31, Velene_31, Vispistious_31, WildNOut_31, Winzigespinne_30, Zada_31,

Genes that have the "Most Annotated" start but do not call it:

-

Genes that do not have the "Most Annotated" start:

- Acosta_32, Ajin_41, Andromedas_30, BouleyBill_29, Bramble_41, Bustleton_29, CarisSwetlik_33, Cheeto1_32, Chepli_32, ChickenKing_31, ChikPic_30, Clock_29, ColaCorta_30, Eleri_30, Finny_30, GaeCeo_32, Glamour_29, Golden_29, Guetzie_29, HavenFinLeoSun_32, HerculesXL_31, Ixel_31, Jemerald_33, Jenos_34, Jingles_29, Juicer_33, KatChan_32, Kauala_29, Kavo_30, Koji_29, Kors_41, LordBart_41, Lucky3_29, Luna18_32, MCubed_30, McGalleon_33, Nebulous_29, PSirce_30, Penta_29, Phanita_30, Pherbot_29, PrincePhergus_29, RikSengupta_41, Sansa_29, Saratos_30, Schimmels22_31, Scissor2024_31, Shamu_30, Sinatra_29, SirVictor_29, Sparcetus_41, Theresita_50, TinyMiny_41, Tinyman4_31, WestPM_29, Xebius_30, YuuY_29, Zenitsu_30,

Summary by start number:

Start 7:

- Found in 2 of 192 (1.0%) of genes in pham
- Manual Annotations of this start: 1 of 178
- Called 50.0% of time when present
- Phage (with cluster) where this start called: Clock_29 (EA5),

Start 10:

- Found in 2 of 192 (1.0%) of genes in pham
- Manual Annotations of this start: 2 of 178
- Called 100.0% of time when present
- Phage (with cluster) where this start called: Jenos_34 (EA1), McGalleon_33 (EA1),

Start 11:

- Found in 5 of 192 (2.6%) of genes in pham
- Manual Annotations of this start: 1 of 178
- Called 20.0% of time when present
- Phage (with cluster) where this start called: PrincePhergus_29 (EA4),

Start 14:

- Found in 42 of 192 (21.9%) of genes in pham
- Manual Annotations of this start: 8 of 178
- Called 19.0% of time when present

- Phage (with cluster) where this start called: Andromedas_30 (EA2), ColaCorta_30 (EA2), Eleri_30 (EA2), Glamour_29 (EA2), HerculesXL_31 (EA11), PSirce_30 (EA2), Sansa_29 (EA2), Schimmels22_31 (EA11),

Start 15:

- Found in 3 of 192 (1.6%) of genes in pham
- No Manual Annotations of this start.
- Called 33.3% of time when present
- Phage (with cluster) where this start called: HavenFinLeoSun_32 (EA1),

Start 16:

- Found in 2 of 192 (1.0%) of genes in pham
- Manual Annotations of this start: 2 of 178
- Called 100.0% of time when present
- Phage (with cluster) where this start called: Acosta_32 (EA1), CarisSwetlik_33 (EA1),

Start 17:

- Found in 50 of 192 (26.0%) of genes in pham
- Manual Annotations of this start: 37 of 178
- Called 82.0% of time when present
- Phage (with cluster) where this start called: Ajin_41 (EF), BouleyBill_29 (EA4), Bramble_41 (EF), Bustleton_29 (EA4), Cheeto1_32 (EA9), Chepli_32 (EA6), ChickenKing_31 (EA9), ChikPic_30 (EA2), Finny_30 (EA2), GaeCeo_32 (EA9), Golden_29 (EA4), Guetzie_29 (EA4), Ixel_31 (EA11), Jemerald_33 (EA6), Jingles_29 (EA4), Juicer_33 (EA6), KatChan_32 (EA6), Kauala_29 (EA4), Kavo_30 (EA11), Koji_29 (EA4), Kors_41 (EF), LordBart_41 (EF), Lucky3_29 (EA4), Luna18_32 (EA6), MCubed_30 (EA2), Penta_29 (EA11), Phanita_30 (EA2), Pherbot_29 (EA4), RikSengupta_41 (EF), Saratos_30 (EA2), Scissor2024_31 (EA11), Shamu_30 (EA2), Sinatra_29 (EA4), SirVictor_29 (EA4), Sparcetus_41 (EF), TinyMiny_41 (EF), Tinyman4_31 (EA11), WestPM_29 (EA11), Xebius_30 (EA2), YuuY_29 (EA10), Zenitsu_30 (EA2),

Start 18:

- Found in 134 of 192 (69.8%) of genes in pham
- Manual Annotations of this start: 125 of 178
- Called 100.0% of time when present
- Phage (with cluster) where this start called: Agente005_31 (EA1), AlexAdler_31 (EA1), Alyxandracam_31 (EA1), Anilorac_30 (EA1), Antoinette_31 (EA1), AranulaLuti_30 (EA1), Asta_30 (EA1), Aubergine_30 (EA1), AxiPup_31 (EA1), Baines_30 (EA1), Balsa_30 (EA1), Bandik_31 (EA1), BeautPeep30_31 (EA1), BeeBee8_31 (EA1), Benjalauren_31 (EA1), BigRedClifford_31 (EA1), Blage_31 (EA1), BonesMcCoy_31 (EA1), Bonino_30 (EA1), Byron23_31 (EA1), Calix_30 (EA1), Chako_30 (EA1), Chamuel_30 (EA1), Christoph_30 (EA1), Clancy_30 (EA1), Convict_31 (EA1), CoraRita_31 (EA1), Dave_31 (EA1), Delphidian_31 (EA1), Den3_31 (EA1), Dothraki_31 (EA1), Duocatuli_30 (EA1), Endor_31 (EA1), Erla_30 (EA1), Espinosa_30 (EA1), Etna_30 (EA1), Etta_30 (EA1), Exploradora_30 (EA1), FarmerDoug_30 (EA1), Figueroism_31 (EA1), GardenB_30 (EA1), Garey24_30 (EA1), Gargoyle_31 (EA1), Gelo_30 (EA1), Gershwin_30 (EA1), GoingMerry_31 (EA1), GoneGirl_31 (EA1), Greys_31 (EA1), Gubbabump_30 (EA1), Hamlet_30 (EA1), HanSolo_30 (EA1), HankSprout_31 (EA1), HungryHenry_30 (EA1), Ilzat_30 (EA1), Inventa_31 (EA1), Ioannes_31 (EA1), Janus167_30 (EA1), JasonD_33 (EA1), JasperRussell_30 (EA1), Jerbirus_31 (EA1), JeriBeth_30 (EA1), Kale_30 (EA1),

KannH_30 (EA1), KellyGreen_31 (EA1), KingJulien_30 (EA1), Klimt_30 (EA1), Knox_31 (EA1), Kouch_30 (EA1), Kurt1_31 (EA1), Leafus_30 (EA1), Lovelyunicorn_31 (EA1), Ludgate_31 (EA1), MaeLinda_31 (EA1), ManRay_30 (EA1), Martin_32 (EA1), Merida02_32 (EA1), MillyPhilly_31 (EA1), MonChoix_29 (EA1), MrWorldwide_31 (EA1), Nagem_31 (EA1), Nattles_30 (EA1), NickSell_31 (EA1), Oats_30 (EA1), OldNelly_31 (EA1), Oxtober96_31 (EA1), Papafritta_30 (EA1), ParleG_31 (EA1), Peep_31 (EA1), Peppino_30 (EA1), Pherferi_31 (EA1), Phiderman_31 (EA1), PhillyPhantom_30 (EA1), Phireproof_31 (EA1), PhredFlintston_31 (EA1), Phriends_31 (EA1), Pocket_30 (EA1), PuppyEggo_31 (EA1), Raccoon_30 (EA1), Rapheph_31 (EA1), Raptor_31 (EA1), Redfield_30 (EA1), Renzie_31 (EA1), Riyhil_31 (EA1), Robinson_31 (EA1), Rog141_30 (EA1), RosieMae_30 (EA1), SJay_31 (EA1), Schnapsidee_30 (EA1), Sedgewig_30 (EA1), ShaiHulud_31 (EA1), Shee_31 (EA1), SoilGremlin_31 (EA1), SolidSnake_32 (EA1), SonOfLevi_30 (EA1), Soror1_30 (EA1), Stanktossa_31 (EA1), StingRay_30 (EA1), StirfryIV_30 (EA1), Stormbreaker8_30 (EA1), Strathdee_31 (EA1), Superfresh_31 (EA1), Symere_30 (EA1), TatarkaPM_31 (EA1), Teagan_31 (EA1), TeddyBear_30 (EA1), Tenda_30 (EA1), Thompsone_31 (EA1), Thorongil_31 (EA1), TinSulphur_31 (EA1), Velene_31 (EA1), Vispistious_31 (EA1), WildNOut_31 (EA1), Winzigespinne_30 (EA1), Zada_31 (EA1),

Start 19:

- Found in 3 of 192 (1.6%) of genes in pham
- Manual Annotations of this start: 2 of 178
- Called 66.7% of time when present
- Phage (with cluster) where this start called: Nebulous_29 (EA5), Theresita_50 (EA7),

Summary by clusters:

There are 10 clusters represented in this pham: EA11, EA10, EF, EA9, EA1, EA2, EA5, EA4, EA7, EA6,

Info for manual annotations of cluster EA1:

- Start number 10 was manually annotated 2 times for cluster EA1.
- Start number 16 was manually annotated 2 times for cluster EA1.
- Start number 18 was manually annotated 125 times for cluster EA1.

Info for manual annotations of cluster EA10:

- Start number 17 was manually annotated 1 time for cluster EA10.

Info for manual annotations of cluster EA11:

- Start number 14 was manually annotated 2 times for cluster EA11.
- Start number 17 was manually annotated 3 times for cluster EA11.

Info for manual annotations of cluster EA2:

- Start number 14 was manually annotated 6 times for cluster EA2.
- Start number 17 was manually annotated 7 times for cluster EA2.

Info for manual annotations of cluster EA4:

- Start number 11 was manually annotated 1 time for cluster EA4.
- Start number 17 was manually annotated 11 times for cluster EA4.

Info for manual annotations of cluster EA5:

- Start number 7 was manually annotated 1 time for cluster EA5.
- Start number 19 was manually annotated 1 time for cluster EA5.

Info for manual annotations of cluster EA6:

- Start number 17 was manually annotated 5 times for cluster EA6.

Info for manual annotations of cluster EA7:

- Start number 19 was manually annotated 1 time for cluster EA7.

Info for manual annotations of cluster EA9:

- Start number 17 was manually annotated 3 times for cluster EA9.

Info for manual annotations of cluster EF:

- Start number 17 was manually annotated 7 times for cluster EF.

Gene Information:

Gene: Acosta_32 Start: 22079, Stop: 21225, Start Num: 16

Candidate Starts for Acosta_32:

(Start: 16 @22079 has 2 MA's), (37, 21731), (44, 21623), (47, 21572), (50, 21548), (54, 21494), (56, 21488),

Gene: Agente005_31 Start: 22035, Stop: 21148, Start Num: 18

Candidate Starts for Agente005_31:

(Start: 18 @22035 has 125 MA's), (38, 21705), (41, 21678), (44, 21618), (47, 21564), (54, 21486), (58, 21465), (70, 21279),

Gene: Ajin_41 Start: 25676, Stop: 26536, Start Num: 17

Candidate Starts for Ajin_41:

(Start: 17 @25676 has 37 MA's), (36, 26015), (44, 26102), (47, 26150), (62, 26303), (63, 26309), (71, 26423), (73, 26441),

Gene: AlexAdler_31 Start: 21787, Stop: 20945, Start Num: 18

Candidate Starts for AlexAdler_31:

(Start: 18 @21787 has 125 MA's), (24, 21673), (25, 21643), (37, 21454), (44, 21346), (47, 21295), (50, 21271), (54, 21217), (66, 21094),

Gene: Alyxandracam_31 Start: 21796, Stop: 20954, Start Num: 18

Candidate Starts for Alyxandracam_31:

(Start: 18 @21796 has 125 MA's), (24, 21682), (25, 21652), (37, 21463), (44, 21355), (47, 21304), (50, 21280), (54, 21226), (66, 21103),

Gene: Andromedas_30 Start: 21852, Stop: 20983, Start Num: 14

Candidate Starts for Andromedas_30:

(Start: 14 @21852 has 8 MA's), (Start: 17 @21834 has 37 MA's), (29, 21549), (33, 21495), (44, 21396), (47, 21348), (48, 21345), (49, 21327), (54, 21264), (56, 21258), (61, 21210), (64, 21168), (69, 21093), (76, 21030),

Gene: Anilorac_30 Start: 21879, Stop: 20992, Start Num: 18

Candidate Starts for Anilorac_30:

(Start: 18 @21879 has 125 MA's), (38, 21549), (41, 21522), (44, 21462), (47, 21408), (54, 21330), (58, 21309),

Gene: Antoinette_31 Start: 21784, Stop: 20942, Start Num: 18

Candidate Starts for Antoinette_31:

(Start: 18 @21784 has 125 MA's), (24, 21670), (25, 21640), (37, 21451), (44, 21343), (47, 21292), (50, 21268), (54, 21214), (66, 21091),

Gene: AranulaLuti_30 Start: 21598, Stop: 20756, Start Num: 18

Candidate Starts for AranulaLuti_30:

(Start: 18 @21598 has 125 MA's), (24, 21484), (25, 21454), (37, 21265), (44, 21157), (47, 21106), (50, 21082), (54, 21028), (56, 21022), (66, 20905),

Gene: Asta_30 Start: 21611, Stop: 20769, Start Num: 18

Candidate Starts for Asta_30:

(Start: 18 @21611 has 125 MA's), (24, 21497), (25, 21467), (37, 21278), (44, 21170), (47, 21119), (50, 21095), (54, 21041), (56, 21035), (66, 20918),

Gene: Aubergine_30 Start: 21611, Stop: 20769, Start Num: 18

Candidate Starts for Aubergine_30:

(Start: 18 @21611 has 125 MA's), (24, 21497), (25, 21467), (37, 21278), (44, 21170), (47, 21119), (50, 21095), (54, 21041), (56, 21035), (66, 20918),

Gene: AxiPup_31 Start: 21796, Stop: 20954, Start Num: 18

Candidate Starts for AxiPup_31:

(Start: 18 @21796 has 125 MA's), (24, 21682), (25, 21652), (37, 21463), (44, 21355), (47, 21304), (50, 21280), (54, 21226), (66, 21103),

Gene: Baines_30 Start: 21598, Stop: 20756, Start Num: 18

Candidate Starts for Baines_30:

(Start: 18 @21598 has 125 MA's), (24, 21484), (25, 21454), (37, 21265), (44, 21157), (47, 21106), (50, 21082), (54, 21028), (56, 21022), (66, 20905),

Gene: Balsa_30 Start: 21873, Stop: 20986, Start Num: 18

Candidate Starts for Balsa_30:

(Start: 18 @21873 has 125 MA's), (25, 21729), (41, 21516), (44, 21456), (46, 21435), (47, 21402), (54, 21324), (58, 21303),

Gene: Bandik_31 Start: 21792, Stop: 20950, Start Num: 18

Candidate Starts for Bandik_31:

(Start: 18 @21792 has 125 MA's), (24, 21678), (25, 21648), (37, 21459), (44, 21351), (47, 21300), (50, 21276), (54, 21222), (66, 21099),

Gene: BeautPeep30_31 Start: 21798, Stop: 20956, Start Num: 18

Candidate Starts for BeautPeep30_31:

(Start: 18 @21798 has 125 MA's), (24, 21684), (25, 21654), (37, 21465), (44, 21357), (47, 21306), (50, 21282), (54, 21228), (56, 21222), (66, 21105),

Gene: BeeBee8_31 Start: 22040, Stop: 21153, Start Num: 18

Candidate Starts for BeeBee8_31:

(Start: 18 @22040 has 125 MA's), (25, 21896), (41, 21683), (44, 21623), (46, 21602), (47, 21569), (54, 21491), (58, 21470),

Gene: Benjalauren_31 Start: 21608, Stop: 20766, Start Num: 18

Candidate Starts for Benjalauren_31:

(Start: 18 @21608 has 125 MA's), (24, 21494), (25, 21464), (37, 21275), (44, 21167), (47, 21116), (50, 21092), (54, 21038), (66, 20915),

Gene: BigRedClifford_31 Start: 21796, Stop: 20954, Start Num: 18

Candidate Starts for BigRedClifford_31:

(Start: 18 @21796 has 125 MA's), (24, 21682), (25, 21652), (37, 21463), (44, 21355), (47, 21304), (50, 21280), (54, 21226), (56, 21220), (66, 21103),

Gene: Blage_31 Start: 21796, Stop: 20954, Start Num: 18

Candidate Starts for Blage_31:

(Start: 18 @21796 has 125 MA's), (24, 21682), (25, 21652), (37, 21463), (44, 21355), (47, 21304), (50, 21280), (54, 21226), (56, 21220), (66, 21103),

Gene: BonesMcCoy_31 Start: 21796, Stop: 20954, Start Num: 18

Candidate Starts for BonesMcCoy_31:

(Start: 18 @21796 has 125 MA's), (24, 21682), (25, 21652), (37, 21463), (44, 21355), (47, 21304), (50, 21280), (54, 21226), (56, 21220), (66, 21103),

Gene: Bonino_30 Start: 21587, Stop: 20745, Start Num: 18

Candidate Starts for Bonino_30:

(Start: 18 @21587 has 125 MA's), (24, 21473), (25, 21443), (37, 21254), (44, 21146), (47, 21095), (50, 21071), (54, 21017), (56, 21011), (66, 20894),

Gene: BouleyBill_29 Start: 21683, Stop: 20790, Start Num: 17

Candidate Starts for BouleyBill_29:

(Start: 11 @21719 has 1 MA's), (Start: 14 @21701 has 8 MA's), (Start: 17 @21683 has 37 MA's), (40, 21317), (43, 21266), (45, 21248), (54, 21131), (61, 21077), (67, 20957),

Gene: Bramble_41 Start: 25636, Stop: 26496, Start Num: 17

Candidate Starts for Bramble_41:

(Start: 17 @25636 has 37 MA's), (36, 25975), (44, 26062), (47, 26110), (62, 26263), (63, 26269), (71, 26383), (73, 26401),

Gene: Bustleton_29 Start: 21683, Stop: 20790, Start Num: 17

Candidate Starts for Bustleton_29:

(Start: 11 @21719 has 1 MA's), (Start: 14 @21701 has 8 MA's), (Start: 17 @21683 has 37 MA's), (31, 21377), (40, 21317), (43, 21266), (45, 21248), (54, 21131), (56, 21125), (61, 21077), (65, 21029),

Gene: Byron23_31 Start: 21801, Stop: 20959, Start Num: 18

Candidate Starts for Byron23_31:

(Start: 18 @21801 has 125 MA's), (24, 21687), (25, 21657), (37, 21468), (44, 21360), (47, 21309), (50, 21285), (54, 21231), (56, 21225), (66, 21108),

Gene: Calix_30 Start: 21591, Stop: 20749, Start Num: 18

Candidate Starts for Calix_30:

(Start: 18 @21591 has 125 MA's), (24, 21477), (25, 21447), (37, 21258), (44, 21150), (47, 21099), (50, 21075), (54, 21021), (56, 21015), (66, 20898),

Gene: CarisSwetlik_33 Start: 22575, Stop: 21721, Start Num: 16

Candidate Starts for CarisSwetlik_33:

(Start: 16 @22575 has 2 MA's), (37, 22227), (44, 22119), (47, 22068), (50, 22044), (54, 21990),

Gene: Chako_30 Start: 21598, Stop: 20756, Start Num: 18

Candidate Starts for Chako_30:

(Start: 18 @21598 has 125 MA's), (24, 21484), (25, 21454), (37, 21265), (44, 21157), (47, 21106), (50, 21082), (54, 21028), (56, 21022), (66, 20905),

Gene: Chamuel_30 Start: 21593, Stop: 20751, Start Num: 18

Candidate Starts for Chamuel_30:

(Start: 18 @21593 has 125 MA's), (24, 21479), (25, 21449), (37, 21260), (44, 21152), (47, 21101), (50, 21077), (54, 21023), (56, 21017), (66, 20900),

Gene: Cheeto1_32 Start: 22256, Stop: 21414, Start Num: 17

Candidate Starts for Cheeto1_32:

(Start: 14 @22274 has 8 MA's), (Start: 17 @22256 has 37 MA's), (31, 21947), (34, 21914), (44, 21818), (47, 21770), (48, 21767),

Gene: Chepli_32 Start: 21461, Stop: 20565, Start Num: 17

Candidate Starts for Chepli_32:

(13, 21482), (Start: 14 @21479 has 8 MA's), (Start: 17 @21461 has 37 MA's), (33, 21125), (38, 21104), (49, 20954), (60, 20855),

Gene: ChickenKing_31 Start: 22169, Stop: 21327, Start Num: 17

Candidate Starts for ChickenKing_31:

(Start: 14 @22187 has 8 MA's), (Start: 17 @22169 has 37 MA's), (31, 21860), (34, 21827), (44, 21731), (47, 21683),

Gene: ChikPic_30 Start: 21850, Stop: 20999, Start Num: 17

Candidate Starts for ChikPic_30:

(Start: 14 @21868 has 8 MA's), (Start: 17 @21850 has 37 MA's), (29, 21565), (33, 21511), (44, 21412), (47, 21364), (49, 21343), (54, 21280), (56, 21274), (61, 21226), (64, 21184), (76, 21046),

Gene: Christoph_30 Start: 21609, Stop: 20767, Start Num: 18

Candidate Starts for Christoph_30:

(Start: 18 @21609 has 125 MA's), (24, 21495), (25, 21465), (37, 21276), (44, 21168), (47, 21117), (50, 21093), (54, 21039), (56, 21033), (66, 20916),

Gene: Clancy_30 Start: 21598, Stop: 20756, Start Num: 18

Candidate Starts for Clancy_30:

(Start: 18 @21598 has 125 MA's), (24, 21484), (25, 21454), (37, 21265), (44, 21157), (47, 21106), (50, 21082), (54, 21028), (56, 21022), (66, 20905),

Gene: Clock_29 Start: 22434, Stop: 21424, Start Num: 7

Candidate Starts for Clock_29:

(5, 22461), (Start: 7 @22434 has 1 MA's), (8, 22398), (12, 22380), (Start: 14 @22374 has 8 MA's), (Start: 19 @22323 has 2 MA's), (20, 22317), (33, 22005), (44, 21903), (54, 21771), (56, 21765), (60, 21735),

Gene: ColaCorta_30 Start: 21852, Stop: 20983, Start Num: 14

Candidate Starts for ColaCorta_30:

(Start: 14 @21852 has 8 MA's), (Start: 17 @21834 has 37 MA's), (29, 21549), (33, 21495), (44, 21396), (47, 21348), (48, 21345), (49, 21327), (54, 21264), (56, 21258), (61, 21210), (64, 21168), (69, 21093), (76, 21030),

Gene: Convict_31 Start: 21796, Stop: 20954, Start Num: 18

Candidate Starts for Convict_31:

(Start: 18 @21796 has 125 MA's), (24, 21682), (25, 21652), (37, 21463), (44, 21355), (47, 21304), (50, 21280), (54, 21226), (56, 21220), (66, 21103),

Gene: CoraRita_31 Start: 21607, Stop: 20765, Start Num: 18

Candidate Starts for CoraRita_31:

(Start: 18 @21607 has 125 MA's), (24, 21493), (25, 21463), (37, 21274), (44, 21166), (47, 21115), (50, 21091), (54, 21037), (56, 21031), (66, 20914),

Gene: Dave_31 Start: 21784, Stop: 20942, Start Num: 18

Candidate Starts for Dave_31:

(Start: 18 @21784 has 125 MA's), (24, 21670), (25, 21640), (37, 21451), (44, 21343), (47, 21292), (50, 21268), (54, 21214), (66, 21091),

Gene: Delphidian_31 Start: 21795, Stop: 20953, Start Num: 18

Candidate Starts for Delphidian_31:

(Start: 18 @21795 has 125 MA's), (24, 21681), (25, 21651), (37, 21462), (44, 21354), (47, 21303), (50, 21279), (54, 21225), (66, 21102),

Gene: Den3_31 Start: 21800, Stop: 20958, Start Num: 18

Candidate Starts for Den3_31:

(Start: 18 @21800 has 125 MA's), (24, 21686), (25, 21656), (37, 21467), (44, 21359), (47, 21308), (50, 21284), (54, 21230), (66, 21107),

Gene: Dothraki_31 Start: 21798, Stop: 20956, Start Num: 18

Candidate Starts for Dothraki_31:

(Start: 18 @21798 has 125 MA's), (24, 21684), (25, 21654), (37, 21465), (44, 21357), (47, 21306), (50, 21282), (54, 21228), (56, 21222), (66, 21105),

Gene: Duocatuli_30 Start: 21598, Stop: 20756, Start Num: 18

Candidate Starts for Duocatuli_30:

(Start: 18 @21598 has 125 MA's), (24, 21484), (25, 21454), (37, 21265), (44, 21157), (47, 21106), (50, 21082), (54, 21028), (56, 21022), (66, 20905),

Gene: Eleri_30 Start: 21865, Stop: 20996, Start Num: 14

Candidate Starts for Eleri_30:

(Start: 14 @21865 has 8 MA's), (Start: 17 @21847 has 37 MA's), (29, 21562), (33, 21508), (44, 21409), (47, 21361), (48, 21358), (49, 21340), (54, 21277), (56, 21271), (61, 21223), (64, 21181), (69, 21106), (76, 21043),

Gene: Endor_31 Start: 22097, Stop: 21195, Start Num: 18

Candidate Starts for Endor_31:

(Start: 18 @22097 has 125 MA's), (37, 21764), (44, 21656), (47, 21605), (50, 21581), (54, 21527), (58, 21506), (68, 21329),

Gene: Erla_30 Start: 21591, Stop: 20749, Start Num: 18

Candidate Starts for Erla_30:

(Start: 18 @21591 has 125 MA's), (24, 21477), (25, 21447), (37, 21258), (44, 21150), (47, 21099), (50, 21075), (54, 21021), (56, 21015), (66, 20898),

Gene: Espinosa_30 Start: 21609, Stop: 20767, Start Num: 18

Candidate Starts for Espinosa_30:

(Start: 18 @21609 has 125 MA's), (24, 21495), (25, 21465), (37, 21276), (44, 21168), (47, 21117), (50, 21093), (54, 21039), (56, 21033), (66, 20916),

Gene: Etna_30 Start: 21878, Stop: 20988, Start Num: 18

Candidate Starts for Etna_30:

(Start: 18 @21878 has 125 MA's), (32, 21563), (54, 21329), (58, 21308),

Gene: Etta_30 Start: 21595, Stop: 20753, Start Num: 18

Candidate Starts for Etta_30:

(Start: 18 @21595 has 125 MA's), (24, 21481), (25, 21451), (37, 21262), (44, 21154), (47, 21103), (50, 21079), (54, 21025), (56, 21019), (66, 20902),

Gene: Exploradora_30 Start: 21598, Stop: 20756, Start Num: 18

Candidate Starts for Exploradora_30:

(Start: 18 @21598 has 125 MA's), (24, 21484), (25, 21454), (37, 21265), (44, 21157), (47, 21106), (50, 21082), (54, 21028), (56, 21022), (66, 20905),

Gene: FarmerDoug_30 Start: 21737, Stop: 20847, Start Num: 18

Candidate Starts for FarmerDoug_30:

(Start: 18 @21737 has 125 MA's), (32, 21422), (54, 21188), (58, 21167),

Gene: Figueroism_31 Start: 21783, Stop: 20941, Start Num: 18

Candidate Starts for Figueroism_31:

(Start: 18 @21783 has 125 MA's), (24, 21669), (25, 21639), (37, 21450), (44, 21342), (47, 21291), (50, 21267), (54, 21213), (56, 21207), (66, 21090),

Gene: Finny_30 Start: 21887, Stop: 20979, Start Num: 17

Candidate Starts for Finny_30:

(Start: 14 @21905 has 8 MA's), (Start: 17 @21887 has 37 MA's), (29, 21602), (33, 21548), (44, 21449), (47, 21401), (48, 21398), (49, 21380), (54, 21317), (56, 21311), (61, 21263), (64, 21221), (76, 21026),

Gene: GaeCeo_32 Start: 22405, Stop: 21563, Start Num: 17

Candidate Starts for GaeCeo_32:

(Start: 14 @22423 has 8 MA's), (Start: 17 @22405 has 37 MA's), (31, 22096), (34, 22063), (44, 21967), (47, 21919),

Gene: GardenB_30 Start: 21876, Stop: 20989, Start Num: 18

Candidate Starts for GardenB_30:

(Start: 18 @21876 has 125 MA's), (41, 21519), (44, 21459), (46, 21438), (47, 21405), (54, 21327), (58, 21306),

Gene: Garey24_30 Start: 21574, Stop: 20732, Start Num: 18

Candidate Starts for Garey24_30:

(Start: 18 @21574 has 125 MA's), (24, 21460), (25, 21430), (37, 21241), (44, 21133), (47, 21082), (50, 21058), (54, 21004), (56, 20998), (66, 20881),

Gene: Gargoyle_31 Start: 21798, Stop: 20956, Start Num: 18

Candidate Starts for Gargoyle_31:

(Start: 18 @21798 has 125 MA's), (24, 21684), (25, 21654), (37, 21465), (44, 21357), (47, 21306), (50, 21282), (54, 21228), (56, 21222), (66, 21105),

Gene: Gelo_30 Start: 21595, Stop: 20753, Start Num: 18

Candidate Starts for Gelo_30:

(Start: 18 @21595 has 125 MA's), (24, 21481), (25, 21451), (37, 21262), (44, 21154), (47, 21103), (50, 21079), (54, 21025), (56, 21019), (66, 20902),

Gene: Gershwin_30 Start: 21611, Stop: 20769, Start Num: 18

Candidate Starts for Gershwin_30:

(Start: 18 @21611 has 125 MA's), (24, 21497), (25, 21467), (37, 21278), (44, 21170), (47, 21119), (50, 21095), (54, 21041), (56, 21035), (66, 20918),

Gene: Glamour_29 Start: 21853, Stop: 20984, Start Num: 14

Candidate Starts for Glamour_29:

(Start: 14 @21853 has 8 MA's), (Start: 17 @21835 has 37 MA's), (29, 21550), (33, 21496), (44, 21397), (47, 21349), (48, 21346), (49, 21328), (54, 21265), (56, 21259), (61, 21211), (64, 21169), (69, 21094), (76, 21031),

Gene: GoingMerry_31 Start: 21806, Stop: 20964, Start Num: 18

Candidate Starts for GoingMerry_31:

(Start: 18 @21806 has 125 MA's), (24, 21692), (25, 21662), (37, 21473), (44, 21365), (47, 21314), (50, 21290), (54, 21236), (56, 21230), (66, 21113),

Gene: Golden_29 Start: 21794, Stop: 20895, Start Num: 17

Candidate Starts for Golden_29:

(Start: 14 @21812 has 8 MA's), (Start: 17 @21794 has 37 MA's), (36, 21449), (40, 21428), (44, 21368), (47, 21320), (54, 21236), (55, 21233), (65, 21134),

Gene: GoneGirl_31 Start: 21925, Stop: 21038, Start Num: 18

Candidate Starts for GoneGirl_31:

(Start: 18 @21925 has 125 MA's), (38, 21595), (41, 21568), (44, 21508), (47, 21454), (53, 21400), (54, 21376), (58, 21355),

Gene: Greys_31 Start: 21793, Stop: 20951, Start Num: 18

Candidate Starts for Greys_31:

(Start: 18 @21793 has 125 MA's), (24, 21679), (25, 21649), (37, 21460), (44, 21352), (47, 21301), (50, 21277), (54, 21223), (66, 21100),

Gene: Gubbabump_30 Start: 21600, Stop: 20758, Start Num: 18

Candidate Starts for Gubbabump_30:

(Start: 18 @21600 has 125 MA's), (24, 21486), (25, 21456), (37, 21267), (44, 21159), (47, 21108), (50, 21084), (54, 21030), (56, 21024), (66, 20907),

Gene: Guetzie_29 Start: 21782, Stop: 20883, Start Num: 17

Candidate Starts for Guetzie_29:

(Start: 14 @21800 has 8 MA's), (Start: 17 @21782 has 37 MA's), (36, 21437), (40, 21416), (44, 21356), (47, 21308), (54, 21224), (55, 21221), (65, 21122),

Gene: Hamlet_30 Start: 21873, Stop: 20986, Start Num: 18

Candidate Starts for Hamlet_30:

(Start: 18 @21873 has 125 MA's), (25, 21729), (41, 21516), (44, 21456), (46, 21435), (47, 21402), (54, 21324), (58, 21303),

Gene: HanSolo_30 Start: 21598, Stop: 20756, Start Num: 18

Candidate Starts for HanSolo_30:

(Start: 18 @21598 has 125 MA's), (24, 21484), (25, 21454), (37, 21265), (44, 21157), (47, 21106), (50, 21082), (54, 21028), (56, 21022), (66, 20905),

Gene: HankSprout_31 Start: 21478, Stop: 20636, Start Num: 18

Candidate Starts for HankSprout_31:

(Start: 18 @21478 has 125 MA's), (24, 21364), (25, 21334), (37, 21145), (44, 21037), (47, 20986), (50, 20962), (54, 20908), (56, 20902), (66, 20785),

Gene: HavenFinLeoSun_32 Start: 22031, Stop: 21207, Start Num: 15

Candidate Starts for HavenFinLeoSun_32:

(15, 22031), (32, 21701), (39, 21677), (54, 21476), (56, 21470),

Gene: HerculesXL_31 Start: 20731, Stop: 19856, Start Num: 14

Candidate Starts for HerculesXL_31:

(Start: 14 @20731 has 8 MA's), (Start: 17 @20713 has 37 MA's), (25, 20551), (26, 20527), (28, 20479), (30, 20419), (33, 20377), (37, 20362), (44, 20317), (47, 20266), (54, 20182), (56, 20176), (59, 20149), (64, 20086),

Gene: HungryHenry_30 Start: 21609, Stop: 20767, Start Num: 18

Candidate Starts for HungryHenry_30:

(Start: 18 @21609 has 125 MA's), (24, 21495), (25, 21465), (37, 21276), (44, 21168), (47, 21117), (50, 21093), (54, 21039), (66, 20916),

Gene: Ilzat_30 Start: 21608, Stop: 20766, Start Num: 18

Candidate Starts for Ilzat_30:

(Start: 18 @21608 has 125 MA's), (24, 21494), (25, 21464), (37, 21275), (44, 21167), (47, 21116), (50, 21092), (54, 21038), (66, 20915),

Gene: Inventa_31 Start: 21798, Stop: 20956, Start Num: 18

Candidate Starts for Inventa_31:

(Start: 18 @21798 has 125 MA's), (24, 21684), (25, 21654), (37, 21465), (44, 21357), (47, 21306), (50, 21282), (54, 21228), (56, 21222), (66, 21105),

Gene: loannes_31 Start: 21796, Stop: 20954, Start Num: 18

Candidate Starts for loannes_31:

(Start: 18 @21796 has 125 MA's), (24, 21682), (25, 21652), (37, 21463), (44, 21355), (47, 21304), (50, 21280), (54, 21226), (56, 21220), (66, 21103),

Gene: Ixel_31 Start: 20664, Stop: 19759, Start Num: 17

Candidate Starts for Ixel_31:

(Start: 14 @20682 has 8 MA's), (Start: 17 @20664 has 37 MA's), (24, 20547), (25, 20517), (33, 20343), (37, 20328), (44, 20220), (46, 20199), (47, 20169), (50, 20145), (54, 20085), (56, 20079), (64, 19989), (76, 19806),

Gene: Janus167_30 Start: 21598, Stop: 20756, Start Num: 18

Candidate Starts for Janus167_30:

(Start: 18 @21598 has 125 MA's), (24, 21484), (25, 21454), (37, 21265), (44, 21157), (47, 21106), (50, 21082), (54, 21028), (56, 21022), (66, 20905),

Gene: JasonD_33 Start: 22235, Stop: 21387, Start Num: 18

Candidate Starts for JasonD_33:

(Start: 18 @22235 has 125 MA's), (37, 21902), (44, 21794), (47, 21743), (50, 21719), (51, 21707), (66, 21536), (76, 21434),

Gene: JasperRussell_30 Start: 21598, Stop: 20756, Start Num: 18

Candidate Starts for JasperRussell_30:

(Start: 18 @21598 has 125 MA's), (24, 21484), (25, 21454), (37, 21265), (44, 21157), (47, 21106), (50, 21082), (54, 21028), (56, 21022), (66, 20905),

Gene: Jemerald_33 Start: 22738, Stop: 21842, Start Num: 17

Candidate Starts for Jemerald_33:

(Start: 17 @22738 has 37 MA's), (22, 22663), (25, 22576), (28, 22504), (33, 22402), (49, 22231),

Gene: Jenos_34 Start: 22908, Stop: 21967, Start Num: 10

Candidate Starts for Jenos_34:

(Start: 10 @22908 has 2 MA's), (15, 22872), (32, 22542), (54, 22308), (56, 22302), (62, 22242), (65, 22206), (70, 22104),

Gene: Jerbirus_31 Start: 21598, Stop: 20756, Start Num: 18

Candidate Starts for Jerbirus_31:

(Start: 18 @21598 has 125 MA's), (24, 21484), (25, 21454), (37, 21265), (44, 21157), (47, 21106), (50, 21082), (54, 21028), (56, 21022), (66, 20905),

Gene: JeriBeth_30 Start: 21455, Stop: 20613, Start Num: 18

Candidate Starts for JeriBeth_30:

(Start: 18 @21455 has 125 MA's), (24, 21341), (25, 21311), (37, 21122), (44, 21014), (47, 20963), (50, 20939), (54, 20885), (66, 20762),

Gene: Jingles_29 Start: 21690, Stop: 20797, Start Num: 17

Candidate Starts for Jingles_29:

(Start: 11 @21726 has 1 MA's), (Start: 14 @21708 has 8 MA's), (Start: 17 @21690 has 37 MA's), (40, 21324), (43, 21273), (45, 21255), (54, 21138), (56, 21132), (61, 21084), (65, 21036),

Gene: Juicer_33 Start: 22738, Stop: 21842, Start Num: 17

Candidate Starts for Juicer_33:

(Start: 17 @22738 has 37 MA's), (22, 22663), (25, 22576), (28, 22504), (33, 22402), (49, 22231),

Gene: Kale_30 Start: 21613, Stop: 20771, Start Num: 18

Candidate Starts for Kale_30:

(Start: 18 @21613 has 125 MA's), (24, 21499), (25, 21469), (37, 21280), (44, 21172), (47, 21121), (50, 21097), (54, 21043), (56, 21037), (66, 20920),

Gene: KannH_30 Start: 21598, Stop: 20756, Start Num: 18

Candidate Starts for KannH_30:

(Start: 18 @21598 has 125 MA's), (24, 21484), (25, 21454), (37, 21265), (44, 21157), (47, 21106), (50, 21082), (54, 21028), (56, 21022), (66, 20905),

Gene: KatChan_32 Start: 21467, Stop: 20571, Start Num: 17

Candidate Starts for KatChan_32:

(13, 21488), (Start: 14 @21485 has 8 MA's), (Start: 17 @21467 has 37 MA's), (33, 21131), (38, 21110), (49, 20960), (60, 20861),

Gene: Kauala_29 Start: 21686, Stop: 20793, Start Num: 17

Candidate Starts for Kauala_29:

(Start: 14 @21704 has 8 MA's), (Start: 17 @21686 has 37 MA's), (23, 21566), (36, 21341), (40, 21320), (44, 21260), (47, 21212), (54, 21134), (64, 21038),

Gene: Kavo_30 Start: 20550, Stop: 19693, Start Num: 17

Candidate Starts for Kavo_30:

(Start: 14 @20568 has 8 MA's), (Start: 17 @20550 has 37 MA's), (25, 20388), (26, 20364), (28, 20316), (30, 20256), (33, 20214), (37, 20199), (44, 20154), (47, 20103), (54, 20019), (56, 20013), (59, 19986), (64, 19923),

Gene: KellyGreen_31 Start: 21598, Stop: 20756, Start Num: 18

Candidate Starts for KellyGreen_31:

(Start: 18 @21598 has 125 MA's), (24, 21484), (25, 21454), (37, 21265), (44, 21157), (47, 21106), (50, 21082), (54, 21028), (56, 21022), (66, 20905),

Gene: KingJulien_30 Start: 21869, Stop: 20982, Start Num: 18

Candidate Starts for KingJulien_30:

(Start: 18 @21869 has 125 MA's), (41, 21512), (44, 21452), (46, 21431), (47, 21398), (54, 21320), (58, 21299),

Gene: Klimt_30 Start: 21593, Stop: 20751, Start Num: 18

Candidate Starts for Klimt_30:

(Start: 18 @21593 has 125 MA's), (24, 21479), (25, 21449), (37, 21260), (44, 21152), (47, 21101), (50, 21077), (54, 21023), (56, 21017), (66, 20900),

Gene: Knox_31 Start: 21796, Stop: 20954, Start Num: 18

Candidate Starts for Knox_31:

(Start: 18 @21796 has 125 MA's), (24, 21682), (25, 21652), (37, 21463), (44, 21355), (47, 21304), (50, 21280), (54, 21226), (56, 21220), (66, 21103),

Gene: Koji_29 Start: 21812, Stop: 20919, Start Num: 17

Candidate Starts for Koji_29:

(2, 21998), (3, 21953), (4, 21938), (Start: 14 @21830 has 8 MA's), (Start: 17 @21812 has 37 MA's), (25, 21650), (35, 21470), (40, 21446), (43, 21395), (45, 21377), (54, 21260), (56, 21254), (61, 21206),

Gene: Kors_41 Start: 25717, Stop: 26583, Start Num: 17

Candidate Starts for Kors_41:

(1, 25516), (6, 25624), (9, 25675), (Start: 17 @25717 has 37 MA's), (21, 25768), (34, 26056), (36, 26062), (44, 26149), (47, 26197), (62, 26350), (63, 26356), (71, 26470), (73, 26488),

Gene: Kouch_30 Start: 21598, Stop: 20756, Start Num: 18

Candidate Starts for Kouch_30:

(Start: 18 @21598 has 125 MA's), (24, 21484), (25, 21454), (37, 21265), (44, 21157), (47, 21106), (50, 21082), (54, 21028), (56, 21022), (66, 20905),

Gene: Kurt1_31 Start: 21798, Stop: 20956, Start Num: 18

Candidate Starts for Kurt1_31:

(Start: 18 @21798 has 125 MA's), (24, 21684), (25, 21654), (37, 21465), (44, 21357), (47, 21306), (50, 21282), (54, 21228), (56, 21222), (66, 21105),

Gene: Leafus_30 Start: 22011, Stop: 21124, Start Num: 18

Candidate Starts for Leafus_30:

(Start: 18 @22011 has 125 MA's), (32, 21696), (56, 21459), (70, 21261),

Gene: LordBart_41 Start: 25632, Stop: 26492, Start Num: 17

Candidate Starts for LordBart_41:

(Start: 17 @25632 has 37 MA's), (36, 25971), (44, 26058), (47, 26106), (62, 26259), (63, 26265), (71, 26379), (73, 26397),

Gene: Lovelyunicorn_31 Start: 21796, Stop: 20954, Start Num: 18

Candidate Starts for Lovelyunicorn_31:

(Start: 18 @21796 has 125 MA's), (24, 21682), (25, 21652), (37, 21463), (44, 21355), (47, 21304), (50, 21280), (54, 21226), (66, 21103),

Gene: Lucky3_29 Start: 21794, Stop: 20895, Start Num: 17

Candidate Starts for Lucky3_29:

(Start: 14 @21812 has 8 MA's), (Start: 17 @21794 has 37 MA's), (36, 21449), (40, 21428), (44, 21368), (47, 21320), (54, 21236), (55, 21233), (65, 21134),

Gene: Ludgate_31 Start: 21792, Stop: 20950, Start Num: 18

Candidate Starts for Ludgate_31:

(Start: 18 @21792 has 125 MA's), (24, 21678), (25, 21648), (37, 21459), (44, 21351), (47, 21300), (50, 21276), (54, 21222), (66, 21099),

Gene: Luna18_32 Start: 21467, Stop: 20571, Start Num: 17

Candidate Starts for Luna18_32:

(13, 21488), (Start: 14 @21485 has 8 MA's), (Start: 17 @21467 has 37 MA's), (33, 21131), (38, 21110), (49, 20960), (60, 20861),

Gene: MCubed_30 Start: 21857, Stop: 21006, Start Num: 17

Candidate Starts for MCubed_30:

(Start: 14 @21875 has 8 MA's), (Start: 17 @21857 has 37 MA's), (29, 21572), (33, 21518), (44, 21419), (47, 21371), (49, 21350), (54, 21287), (56, 21281), (61, 21233), (64, 21191), (76, 21053),

Gene: MaeLinda_31 Start: 21798, Stop: 20956, Start Num: 18

Candidate Starts for MaeLinda_31:

(Start: 18 @21798 has 125 MA's), (24, 21684), (25, 21654), (37, 21465), (44, 21357), (47, 21306), (50, 21282), (54, 21228), (56, 21222), (66, 21105), (75, 21024),

Gene: ManRay_30 Start: 21611, Stop: 20769, Start Num: 18

Candidate Starts for ManRay_30:

(Start: 18 @21611 has 125 MA's), (24, 21497), (25, 21467), (37, 21278), (44, 21170), (47, 21119), (50, 21095), (54, 21041), (56, 21035), (66, 20918),

Gene: Martin_32 Start: 21798, Stop: 20956, Start Num: 18

Candidate Starts for Martin_32:

(Start: 18 @21798 has 125 MA's), (24, 21684), (25, 21654), (37, 21465), (44, 21357), (47, 21306), (50, 21282), (54, 21228), (56, 21222), (66, 21105),

Gene: McGalleon_33 Start: 23130, Stop: 22183, Start Num: 10

Candidate Starts for McGalleon_33:

(Start: 10 @23130 has 2 MA's), (15, 23094), (36, 22749), (42, 22686), (54, 22524), (56, 22518), (62, 22458), (65, 22422), (70, 22320),

Gene: Merida02_32 Start: 21795, Stop: 20953, Start Num: 18

Candidate Starts for Merida02_32:

(Start: 18 @21795 has 125 MA's), (24, 21681), (25, 21651), (37, 21462), (44, 21354), (47, 21303), (50, 21279), (54, 21225), (66, 21102),

Gene: MillyPhilly_31 Start: 21795, Stop: 20953, Start Num: 18

Candidate Starts for MillyPhilly_31:

(Start: 18 @21795 has 125 MA's), (24, 21681), (25, 21651), (37, 21462), (44, 21354), (47, 21303), (50, 21279), (54, 21225), (56, 21219), (66, 21102),

Gene: MonChoix_29 Start: 21781, Stop: 20879, Start Num: 18

Candidate Starts for MonChoix_29:

(Start: 18 @21781 has 125 MA's), (37, 21448), (44, 21340), (47, 21289), (50, 21265), (54, 21211), (58, 21190), (68, 21013),

Gene: MrWorldwide_31 Start: 21799, Stop: 20957, Start Num: 18

Candidate Starts for MrWorldwide_31:

(Start: 18 @21799 has 125 MA's), (24, 21685), (25, 21655), (37, 21466), (44, 21358), (47, 21307), (50, 21283), (54, 21229), (56, 21223), (66, 21106),

Gene: Nagem_31 Start: 21792, Stop: 20950, Start Num: 18

Candidate Starts for Nagem_31:

(Start: 18 @21792 has 125 MA's), (24, 21678), (25, 21648), (37, 21459), (44, 21351), (47, 21300), (50, 21276), (54, 21222), (66, 21099),

Gene: Nattles_30 Start: 21598, Stop: 20756, Start Num: 18

Candidate Starts for Nattles_30:

(Start: 18 @21598 has 125 MA's), (24, 21484), (25, 21454), (37, 21265), (44, 21157), (47, 21106), (50, 21082), (54, 21028), (56, 21022), (66, 20905),

Gene: Nebulous_29 Start: 22504, Stop: 21605, Start Num: 19

Candidate Starts for Nebulous_29:

(5, 22642), (Start: 7 @22615 has 1 MA's), (8, 22579), (12, 22561), (Start: 14 @22555 has 8 MA's), (Start: 19 @22504 has 2 MA's), (20, 22498), (33, 22186), (44, 22084), (54, 21952), (56, 21946), (60, 21916),

Gene: NickSell_31 Start: 21798, Stop: 20956, Start Num: 18

Candidate Starts for NickSell_31:

(Start: 18 @21798 has 125 MA's), (24, 21684), (25, 21654), (37, 21465), (44, 21357), (47, 21306), (50, 21282), (54, 21228), (56, 21222), (66, 21105),

Gene: Oats_30 Start: 21611, Stop: 20769, Start Num: 18

Candidate Starts for Oats_30:

(Start: 18 @21611 has 125 MA's), (24, 21497), (25, 21467), (37, 21278), (44, 21170), (47, 21119), (50, 21095), (54, 21041), (56, 21035), (66, 20918),

Gene: OldNelly_31 Start: 21798, Stop: 20956, Start Num: 18

Candidate Starts for OldNelly_31:

(Start: 18 @21798 has 125 MA's), (24, 21684), (25, 21654), (37, 21465), (44, 21357), (47, 21306), (50, 21282), (54, 21228), (66, 21105),

Gene: Oxtober96_31 Start: 21796, Stop: 20954, Start Num: 18

Candidate Starts for Oxtober96_31:

(Start: 18 @21796 has 125 MA's), (24, 21682), (25, 21652), (37, 21463), (44, 21355), (47, 21304), (50, 21280), (54, 21226), (66, 21103),

Gene: PSirce_30 Start: 21868, Stop: 20999, Start Num: 14

Candidate Starts for PSirce_30:

(Start: 14 @21868 has 8 MA's), (Start: 17 @21850 has 37 MA's), (29, 21565), (33, 21511), (44, 21412), (47, 21364), (48, 21361), (49, 21343), (54, 21280), (56, 21274), (61, 21226), (64, 21184), (69, 21109),

(76, 21046),

Gene: Papafritta_30 Start: 21607, Stop: 20765, Start Num: 18

Candidate Starts for Papafritta_30:

(Start: 18 @21607 has 125 MA's), (24, 21493), (25, 21463), (37, 21274), (44, 21166), (47, 21115), (50, 21091), (54, 21037), (66, 20914),

Gene: ParleG_31 Start: 21799, Stop: 20957, Start Num: 18

Candidate Starts for ParleG_31:

(Start: 18 @21799 has 125 MA's), (24, 21685), (25, 21655), (37, 21466), (44, 21358), (47, 21307), (50, 21283), (54, 21229), (56, 21223), (66, 21106),

Gene: Peep_31 Start: 21784, Stop: 20942, Start Num: 18

Candidate Starts for Peep_31:

(Start: 18 @21784 has 125 MA's), (24, 21670), (25, 21640), (37, 21451), (44, 21343), (47, 21292), (50, 21268), (54, 21214), (66, 21091),

Gene: Penta_29 Start: 20407, Stop: 19550, Start Num: 17

Candidate Starts for Penta_29:

(Start: 14 @20425 has 8 MA's), (Start: 17 @20407 has 37 MA's), (25, 20245), (28, 20173), (30, 20113), (33, 20071), (37, 20056), (44, 20011), (47, 19960), (54, 19876), (56, 19870), (59, 19843), (62, 19810), (64, 19780), (65, 19774),

Gene: Peppino_30 Start: 21865, Stop: 20978, Start Num: 18

Candidate Starts for Peppino_30:

(Start: 18 @21865 has 125 MA's), (25, 21721), (41, 21508), (44, 21448), (46, 21427), (47, 21394), (54, 21316), (58, 21295),

Gene: Phanita_30 Start: 21830, Stop: 20979, Start Num: 17

Candidate Starts for Phanita_30:

(Start: 14 @21848 has 8 MA's), (Start: 17 @21830 has 37 MA's), (29, 21545), (33, 21491), (44, 21392), (47, 21344), (49, 21323), (54, 21260), (56, 21254), (61, 21206), (64, 21164), (76, 21026),

Gene: Pherbot_29 Start: 21682, Stop: 20789, Start Num: 17

Candidate Starts for Pherbot_29:

(Start: 11 @21718 has 1 MA's), (Start: 14 @21700 has 8 MA's), (Start: 17 @21682 has 37 MA's), (31, 21376), (40, 21316), (43, 21265), (45, 21247), (54, 21130), (56, 21124), (61, 21076), (65, 21028),

Gene: Pherferi_31 Start: 21798, Stop: 20956, Start Num: 18

Candidate Starts for Pherferi_31:

(Start: 18 @21798 has 125 MA's), (24, 21684), (25, 21654), (37, 21465), (44, 21357), (47, 21306), (50, 21282), (54, 21228), (56, 21222), (66, 21105),

Gene: Phiderman_31 Start: 21795, Stop: 20953, Start Num: 18

Candidate Starts for Phiderman_31:

(Start: 18 @21795 has 125 MA's), (24, 21681), (25, 21651), (37, 21462), (44, 21354), (47, 21303), (50, 21279), (54, 21225), (56, 21219), (66, 21102),

Gene: PhillyPhantom_30 Start: 21846, Stop: 20998, Start Num: 18

Candidate Starts for PhillyPhantom_30:

(Start: 18 @21846 has 125 MA's), (37, 21513), (44, 21405), (47, 21354), (50, 21330), (54, 21270), (56, 21264), (66, 21147), (76, 21045),

Gene: Phireproof_31 Start: 21798, Stop: 20956, Start Num: 18

Candidate Starts for Phireproof_31:

(Start: 18 @21798 has 125 MA's), (24, 21684), (25, 21654), (37, 21465), (44, 21357), (47, 21306), (50, 21282), (54, 21228), (56, 21222), (66, 21105),

Gene: PhredFlintston_31 Start: 21798, Stop: 20956, Start Num: 18

Candidate Starts for PhredFlintston_31:

(Start: 18 @21798 has 125 MA's), (24, 21684), (25, 21654), (37, 21465), (44, 21357), (47, 21306), (50, 21282), (54, 21228), (56, 21222), (66, 21105),

Gene: Phriends_31 Start: 21798, Stop: 20956, Start Num: 18

Candidate Starts for Phriends_31:

(Start: 18 @21798 has 125 MA's), (24, 21684), (25, 21654), (37, 21465), (44, 21357), (47, 21306), (50, 21282), (54, 21228), (66, 21105),

Gene: Pocket_30 Start: 21596, Stop: 20754, Start Num: 18

Candidate Starts for Pocket_30:

(Start: 18 @21596 has 125 MA's), (24, 21482), (25, 21452), (37, 21263), (44, 21155), (47, 21104), (50, 21080), (54, 21026), (56, 21020), (66, 20903),

Gene: PrincePhergus_29 Start: 21721, Stop: 20792, Start Num: 11

Candidate Starts for PrincePhergus_29:

(Start: 11 @21721 has 1 MA's), (Start: 14 @21703 has 8 MA's), (Start: 17 @21685 has 37 MA's), (40, 21319), (43, 21268), (45, 21250), (54, 21133), (56, 21127), (61, 21079),

Gene: PuppyEggo_31 Start: 21796, Stop: 20954, Start Num: 18

Candidate Starts for PuppyEggo_31:

(Start: 18 @21796 has 125 MA's), (24, 21682), (25, 21652), (37, 21463), (44, 21355), (47, 21304), (50, 21280), (54, 21226), (66, 21103),

Gene: Raccoon_30 Start: 21834, Stop: 20986, Start Num: 18

Candidate Starts for Raccoon_30:

(Start: 18 @21834 has 125 MA's), (37, 21501), (44, 21393), (47, 21342), (50, 21318), (54, 21258), (56, 21252), (66, 21135), (76, 21033),

Gene: Rapheph_31 Start: 21798, Stop: 20956, Start Num: 18

Candidate Starts for Rapheph_31:

(Start: 18 @21798 has 125 MA's), (24, 21684), (25, 21654), (37, 21465), (44, 21357), (47, 21306), (50, 21282), (54, 21228), (56, 21222), (66, 21105),

Gene: Raptor_31 Start: 21796, Stop: 20954, Start Num: 18

Candidate Starts for Raptor_31:

(Start: 18 @21796 has 125 MA's), (24, 21682), (25, 21652), (37, 21463), (44, 21355), (47, 21304), (50, 21280), (54, 21226), (56, 21220), (66, 21103),

Gene: Redfield_30 Start: 21872, Stop: 20985, Start Num: 18

Candidate Starts for Redfield_30:

(Start: 18 @21872 has 125 MA's), (25, 21728), (41, 21515), (44, 21455), (46, 21434), (47, 21401), (54, 21323), (58, 21302),

Gene: Renzie_31 Start: 21784, Stop: 20942, Start Num: 18

Candidate Starts for Renzie_31:

(Start: 18 @21784 has 125 MA's), (24, 21670), (25, 21640), (37, 21451), (44, 21343), (47, 21292), (50, 21268), (54, 21214), (66, 21091),

Gene: RikSengupta_41 Start: 25754, Stop: 26620, Start Num: 17
Candidate Starts for RikSengupta_41:

(1, 25553), (6, 25661), (9, 25712), (Start: 17 @25754 has 37 MA's), (21, 25805), (34, 26093), (36, 26099), (44, 26186), (47, 26234), (57, 26330), (62, 26387), (63, 26393), (71, 26507), (72, 26519), (73, 26525),

Gene: Riyhil_31 Start: 21798, Stop: 20956, Start Num: 18
Candidate Starts for Riyhil_31:

(Start: 18 @21798 has 125 MA's), (24, 21684), (25, 21654), (37, 21465), (44, 21357), (47, 21306), (50, 21282), (54, 21228), (66, 21105),

Gene: Robinson_31 Start: 21790, Stop: 20948, Start Num: 18
Candidate Starts for Robinson_31:

(Start: 18 @21790 has 125 MA's), (24, 21676), (25, 21646), (37, 21457), (44, 21349), (47, 21298), (50, 21274), (54, 21220), (56, 21214), (66, 21097),

Gene: Rog141_30 Start: 21598, Stop: 20756, Start Num: 18
Candidate Starts for Rog141_30:

(Start: 18 @21598 has 125 MA's), (24, 21484), (25, 21454), (37, 21265), (44, 21157), (47, 21106), (50, 21082), (54, 21028), (56, 21022), (66, 20905),

Gene: RosieMae_30 Start: 21608, Stop: 20766, Start Num: 18
Candidate Starts for RosieMae_30:

(Start: 18 @21608 has 125 MA's), (24, 21494), (25, 21464), (37, 21275), (44, 21167), (47, 21116), (50, 21092), (54, 21038), (66, 20915),

Gene: SJay_31 Start: 21793, Stop: 20951, Start Num: 18
Candidate Starts for SJay_31:

(Start: 18 @21793 has 125 MA's), (24, 21679), (25, 21649), (37, 21460), (44, 21352), (47, 21301), (50, 21277), (54, 21223), (66, 21100),

Gene: Sansa_29 Start: 21875, Stop: 21006, Start Num: 14
Candidate Starts for Sansa_29:

(Start: 14 @21875 has 8 MA's), (Start: 17 @21857 has 37 MA's), (29, 21572), (33, 21518), (44, 21419), (47, 21371), (48, 21368), (49, 21350), (54, 21287), (56, 21281), (60, 21251), (61, 21233), (64, 21191), (69, 21116), (76, 21053),

Gene: Saratos_30 Start: 21832, Stop: 20981, Start Num: 17
Candidate Starts for Saratos_30:

(Start: 14 @21850 has 8 MA's), (Start: 17 @21832 has 37 MA's), (29, 21547), (33, 21493), (44, 21394), (47, 21346), (48, 21343), (49, 21325), (54, 21262), (56, 21256), (61, 21208), (64, 21166), (69, 21091), (76, 21028),

Gene: Schimmels22_31 Start: 21105, Stop: 20230, Start Num: 14
Candidate Starts for Schimmels22_31:

(Start: 14 @21105 has 8 MA's), (Start: 17 @21087 has 37 MA's), (25, 20925), (26, 20901), (28, 20853), (30, 20793), (33, 20751), (37, 20736), (44, 20691), (47, 20640), (52, 20583), (54, 20556), (56, 20550), (59, 20523), (64, 20460),

Gene: Schnapsidee_30 Start: 21866, Stop: 20979, Start Num: 18

Candidate Starts for Schnapsidee_30:

(Start: 18 @21866 has 125 MA's), (25, 21722), (41, 21509), (44, 21449), (46, 21428), (47, 21395), (54, 21317), (58, 21296),

Gene: Scissor2024_31 Start: 20723, Stop: 19866, Start Num: 17

Candidate Starts for Scissor2024_31:

(Start: 14 @20741 has 8 MA's), (Start: 17 @20723 has 37 MA's), (25, 20561), (26, 20537), (28, 20489), (30, 20429), (33, 20387), (37, 20372), (44, 20327), (47, 20276), (54, 20192), (56, 20186), (59, 20159), (64, 20096),

Gene: Sedgewig_30 Start: 21590, Stop: 20748, Start Num: 18

Candidate Starts for Sedgewig_30:

(Start: 18 @21590 has 125 MA's), (24, 21476), (25, 21446), (37, 21257), (44, 21149), (47, 21098), (50, 21074), (54, 21020), (66, 20897),

Gene: ShaiHulud_31 Start: 21796, Stop: 20954, Start Num: 18

Candidate Starts for ShaiHulud_31:

(Start: 18 @21796 has 125 MA's), (24, 21682), (25, 21652), (37, 21463), (44, 21355), (47, 21304), (50, 21280), (54, 21226), (66, 21103),

Gene: Shamu_30 Start: 21847, Stop: 20996, Start Num: 17

Candidate Starts for Shamu_30:

(Start: 14 @21865 has 8 MA's), (Start: 17 @21847 has 37 MA's), (29, 21562), (33, 21508), (44, 21409), (47, 21361), (48, 21358), (49, 21340), (54, 21277), (56, 21271), (61, 21223), (64, 21181), (69, 21106), (76, 21043),

Gene: Shee_31 Start: 21795, Stop: 20953, Start Num: 18

Candidate Starts for Shee_31:

(Start: 18 @21795 has 125 MA's), (24, 21681), (25, 21651), (37, 21462), (44, 21354), (47, 21303), (50, 21279), (54, 21225), (56, 21219), (66, 21102),

Gene: Sinatra_29 Start: 21682, Stop: 20789, Start Num: 17

Candidate Starts for Sinatra_29:

(Start: 14 @21700 has 8 MA's), (Start: 17 @21682 has 37 MA's), (25, 21520), (40, 21316), (43, 21265), (45, 21247), (49, 21187), (54, 21130), (56, 21124), (61, 21076),

Gene: SirVictor_29 Start: 21782, Stop: 20883, Start Num: 17

Candidate Starts for SirVictor_29:

(Start: 14 @21800 has 8 MA's), (Start: 17 @21782 has 37 MA's), (36, 21437), (40, 21416), (44, 21356), (47, 21308), (54, 21224), (55, 21221), (65, 21122),

Gene: SoilGremlin_31 Start: 21795, Stop: 20953, Start Num: 18

Candidate Starts for SoilGremlin_31:

(Start: 18 @21795 has 125 MA's), (24, 21681), (25, 21651), (37, 21462), (44, 21354), (47, 21303), (50, 21279), (54, 21225), (66, 21102),

Gene: SolidSnake_32 Start: 21798, Stop: 20956, Start Num: 18

Candidate Starts for SolidSnake_32:

(Start: 18 @21798 has 125 MA's), (24, 21684), (25, 21654), (37, 21465), (44, 21357), (47, 21306), (50, 21282), (54, 21228), (56, 21222), (66, 21105),

Gene: SonOfLevi_30 Start: 21593, Stop: 20751, Start Num: 18

Candidate Starts for SonOfLevi_30:

(Start: 18 @21593 has 125 MA's), (24, 21479), (25, 21449), (37, 21260), (44, 21152), (47, 21101), (50, 21077), (54, 21023), (56, 21017), (66, 20900),

Gene: Soror1_30 Start: 21878, Stop: 20991, Start Num: 18

Candidate Starts for Soror1_30:

(Start: 18 @21878 has 125 MA's), (41, 21521), (44, 21461), (46, 21440), (47, 21407), (54, 21329), (58, 21308),

Gene: Sparcetus_41 Start: 25633, Stop: 26499, Start Num: 17

Candidate Starts for Sparcetus_41:

(1, 25432), (6, 25540), (9, 25591), (Start: 17 @25633 has 37 MA's), (21, 25684), (36, 25978), (44, 26065), (47, 26113), (62, 26266), (63, 26272), (71, 26386), (73, 26404),

Gene: Stanktossa_31 Start: 21798, Stop: 20956, Start Num: 18

Candidate Starts for Stanktossa_31:

(Start: 18 @21798 has 125 MA's), (24, 21684), (25, 21654), (37, 21465), (44, 21357), (47, 21306), (50, 21282), (54, 21228), (56, 21222), (66, 21105),

Gene: StingRay_30 Start: 21608, Stop: 20766, Start Num: 18

Candidate Starts for StingRay_30:

(Start: 18 @21608 has 125 MA's), (24, 21494), (25, 21464), (37, 21275), (44, 21167), (47, 21116), (50, 21092), (54, 21038), (66, 20915),

Gene: StirfryIV_30 Start: 21598, Stop: 20756, Start Num: 18

Candidate Starts for StirfryIV_30:

(Start: 18 @21598 has 125 MA's), (24, 21484), (25, 21454), (37, 21265), (44, 21157), (47, 21106), (50, 21082), (54, 21028), (56, 21022), (66, 20905),

Gene: Stormbreaker8_30 Start: 21869, Stop: 20982, Start Num: 18

Candidate Starts for Stormbreaker8_30:

(Start: 18 @21869 has 125 MA's), (41, 21512), (44, 21452), (46, 21431), (47, 21398), (54, 21320), (58, 21299),

Gene: Strathdee_31 Start: 21797, Stop: 20955, Start Num: 18

Candidate Starts for Strathdee_31:

(Start: 18 @21797 has 125 MA's), (24, 21683), (25, 21653), (37, 21464), (44, 21356), (47, 21305), (50, 21281), (54, 21227), (56, 21221), (66, 21104),

Gene: Superfresh_31 Start: 21784, Stop: 20942, Start Num: 18

Candidate Starts for Superfresh_31:

(Start: 18 @21784 has 125 MA's), (24, 21670), (25, 21640), (37, 21451), (44, 21343), (47, 21292), (50, 21268), (54, 21214), (66, 21091),

Gene: Symere_30 Start: 21588, Stop: 20746, Start Num: 18

Candidate Starts for Symere_30:

(Start: 18 @21588 has 125 MA's), (24, 21474), (25, 21444), (37, 21255), (44, 21147), (47, 21096), (50, 21072), (54, 21018), (66, 20895),

Gene: TatarkaPM_31 Start: 21798, Stop: 20956, Start Num: 18

Candidate Starts for TatarkaPM_31:

(Start: 18 @21798 has 125 MA's), (24, 21684), (25, 21654), (37, 21465), (44, 21357), (47, 21306), (50, 21282), (54, 21228), (56, 21222), (66, 21105),

Gene: Teagan_31 Start: 21792, Stop: 20950, Start Num: 18

Candidate Starts for Teagan_31:

(Start: 18 @21792 has 125 MA's), (24, 21678), (25, 21648), (37, 21459), (44, 21351), (47, 21300), (50, 21276), (54, 21222), (66, 21099),

Gene: TeddyBear_30 Start: 21611, Stop: 20769, Start Num: 18

Candidate Starts for TeddyBear_30:

(Start: 18 @21611 has 125 MA's), (24, 21497), (25, 21467), (37, 21278), (44, 21170), (47, 21119), (50, 21095), (54, 21041), (56, 21035), (66, 20918),

Gene: Tenda_30 Start: 21609, Stop: 20767, Start Num: 18

Candidate Starts for Tenda_30:

(Start: 18 @21609 has 125 MA's), (24, 21495), (25, 21465), (37, 21276), (44, 21168), (47, 21117), (50, 21093), (54, 21039), (56, 21033), (66, 20916),

Gene: Theresita_50 Start: 33880, Stop: 33122, Start Num: 19

Candidate Starts for Theresita_50:

(Start: 19 @33880 has 2 MA's), (27, 33712), (33, 33574), (44, 33514), (61, 33319), (62, 33307), (64, 33277), (74, 33208), (75, 33193),

Gene: Thompsone_31 Start: 21796, Stop: 20954, Start Num: 18

Candidate Starts for Thompsone_31:

(Start: 18 @21796 has 125 MA's), (24, 21682), (25, 21652), (37, 21463), (44, 21355), (47, 21304), (50, 21280), (54, 21226), (56, 21220), (66, 21103),

Gene: Thorongil_31 Start: 21796, Stop: 20954, Start Num: 18

Candidate Starts for Thorongil_31:

(Start: 18 @21796 has 125 MA's), (24, 21682), (25, 21652), (37, 21463), (44, 21355), (47, 21304), (50, 21280), (54, 21226), (66, 21103),

Gene: TinSulphur_31 Start: 21798, Stop: 20956, Start Num: 18

Candidate Starts for TinSulphur_31:

(Start: 18 @21798 has 125 MA's), (24, 21684), (25, 21654), (37, 21465), (44, 21357), (47, 21306), (50, 21282), (54, 21228), (56, 21222), (66, 21105),

Gene: TinyMiny_41 Start: 25652, Stop: 26518, Start Num: 17

Candidate Starts for TinyMiny_41:

(1, 25451), (6, 25559), (9, 25610), (Start: 17 @25652 has 37 MA's), (21, 25703), (36, 25997), (44, 26084), (47, 26132), (62, 26285), (63, 26291), (71, 26405), (73, 26423),

Gene: Tinyman4_31 Start: 20713, Stop: 19856, Start Num: 17

Candidate Starts for Tinyman4_31:

(Start: 14 @20731 has 8 MA's), (Start: 17 @20713 has 37 MA's), (25, 20551), (26, 20527), (28, 20479), (30, 20419), (33, 20377), (37, 20362), (44, 20317), (47, 20266), (54, 20182), (56, 20176), (59, 20149), (64, 20086),

Gene: Velene_31 Start: 21796, Stop: 20954, Start Num: 18

Candidate Starts for Velene_31:

(Start: 18 @21796 has 125 MA's), (24, 21682), (25, 21652), (37, 21463), (44, 21355), (47, 21304), (50, 21280), (54, 21226), (66, 21103),

Gene: Vispitious_31 Start: 21796, Stop: 20954, Start Num: 18

Candidate Starts for Vispitious_31:

(Start: 18 @21796 has 125 MA's), (24, 21682), (25, 21652), (37, 21463), (44, 21355), (47, 21304), (50, 21280), (54, 21226), (66, 21103),

Gene: WestPM_29 Start: 20570, Stop: 19713, Start Num: 17

Candidate Starts for WestPM_29:

(Start: 14 @20588 has 8 MA's), (Start: 17 @20570 has 37 MA's), (25, 20408), (28, 20336), (30, 20276), (33, 20234), (37, 20219), (44, 20174), (47, 20123), (54, 20039), (56, 20033), (59, 20006), (62, 19973), (64, 19943),

Gene: WildNOut_31 Start: 21796, Stop: 20954, Start Num: 18

Candidate Starts for WildNOut_31:

(Start: 18 @21796 has 125 MA's), (24, 21682), (25, 21652), (37, 21463), (44, 21355), (47, 21304), (50, 21280), (54, 21226), (66, 21103),

Gene: Winzigespinne_30 Start: 21597, Stop: 20755, Start Num: 18

Candidate Starts for Winzigespinne_30:

(Start: 18 @21597 has 125 MA's), (24, 21483), (25, 21453), (37, 21264), (44, 21156), (47, 21105), (50, 21081), (54, 21027), (56, 21021), (66, 20904),

Gene: Xebius_30 Start: 21835, Stop: 20984, Start Num: 17

Candidate Starts for Xebius_30:

(Start: 14 @21853 has 8 MA's), (Start: 17 @21835 has 37 MA's), (29, 21550), (33, 21496), (44, 21397), (47, 21349), (48, 21346), (49, 21328), (54, 21265), (56, 21259), (61, 21211), (64, 21169), (69, 21094), (76, 21031),

Gene: YuuY_29 Start: 21987, Stop: 21088, Start Num: 17

Candidate Starts for YuuY_29:

(Start: 17 @21987 has 37 MA's), (33, 21648), (40, 21618), (44, 21546), (49, 21477), (55, 21411), (56, 21408), (64, 21318),

Gene: Zada_31 Start: 21777, Stop: 20935, Start Num: 18

Candidate Starts for Zada_31:

(Start: 18 @21777 has 125 MA's), (24, 21663), (25, 21633), (37, 21444), (44, 21336), (47, 21285), (50, 21261), (54, 21207), (66, 21084),

Gene: Zenitsu_30 Start: 21862, Stop: 21011, Start Num: 17

Candidate Starts for Zenitsu_30:

(Start: 14 @21880 has 8 MA's), (Start: 17 @21862 has 37 MA's), (29, 21577), (33, 21523), (44, 21424), (47, 21376), (48, 21373), (49, 21355), (54, 21292), (56, 21286), (61, 21238), (64, 21196), (69, 21121), (76, 21058),