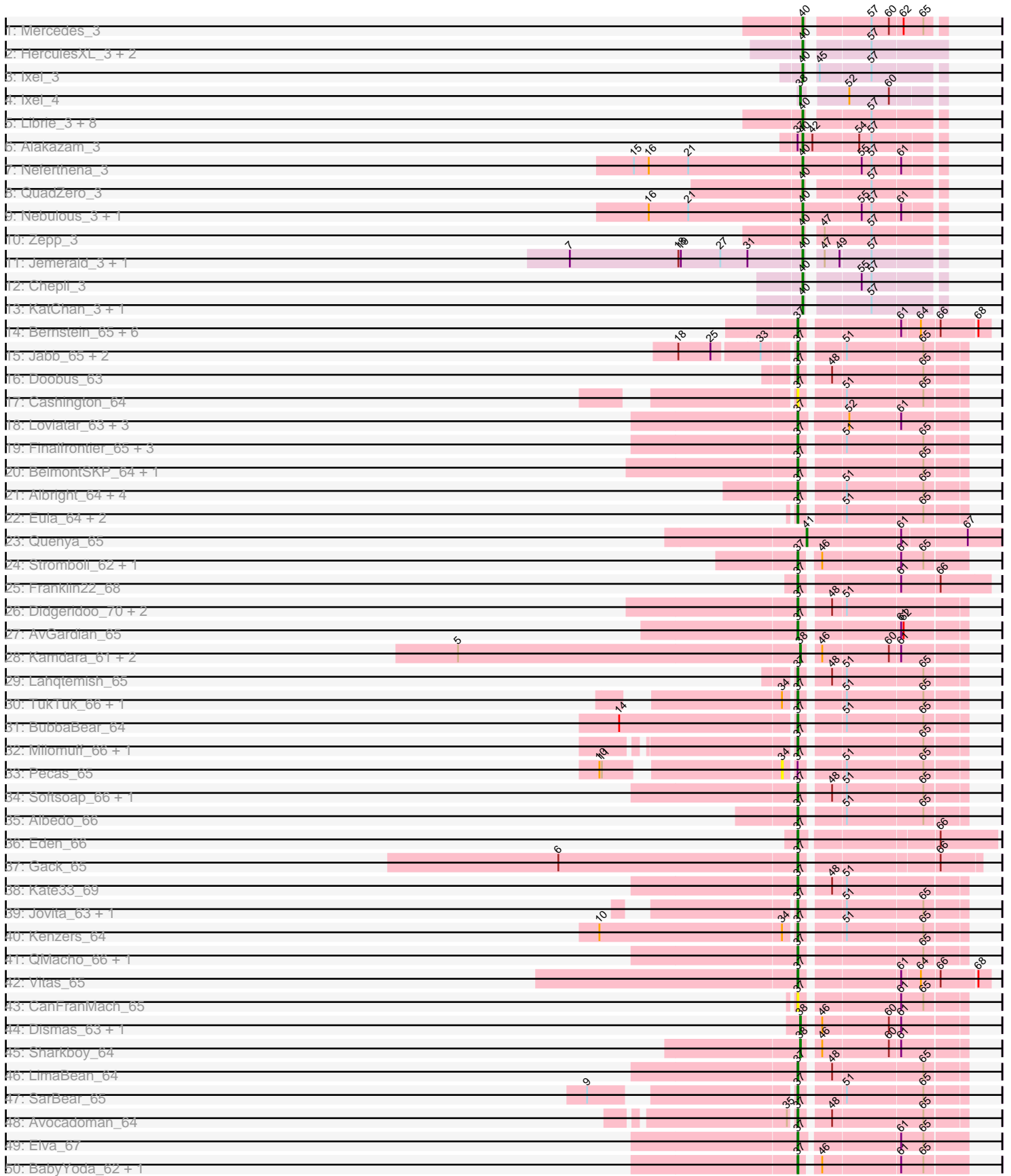
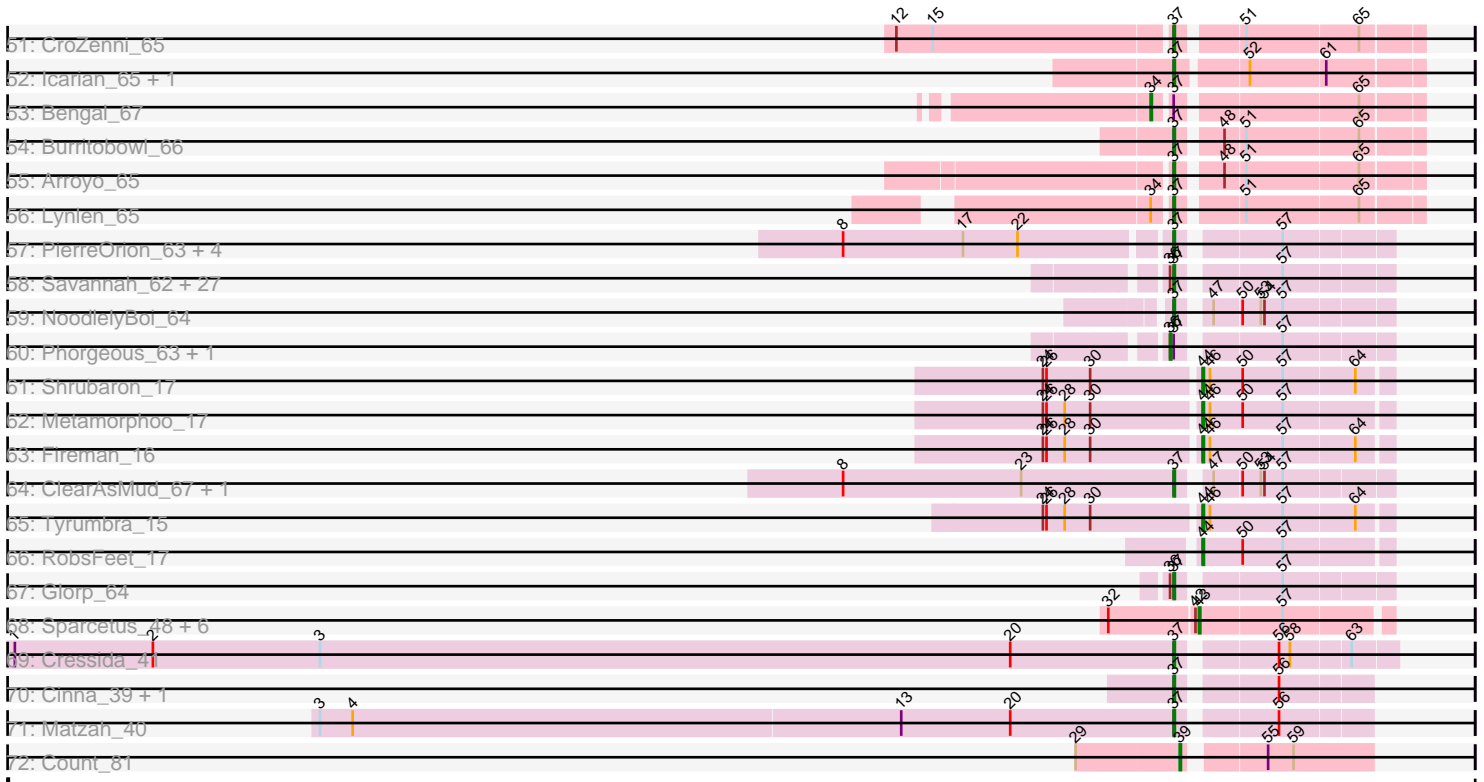


Pham 301120



Pham 301120



Note: Tracks are now grouped by subcluster and scaled. Switching in subcluster is indicated by changes in track color. Track scale is now set by default to display the region 30 bp upstream of start 1 to 30 bp downstream of the last possible start. If this default region is judged to be packed too tightly with annotated starts, the track will be further scaled to only show that region of the ORF with annotated starts. This action will be indicated by adding "Zoomed" to the title. For starts, yellow indicates the location of called starts comprised solely of Glimmer/GeneMark auto-annotations, green indicates the location of called starts with at least 1 manual gene annotation.

Pham 301120 Report

This analysis was run 06/08/26 on database version 649.

Pham number 301120 has 159 members, 16 are drafts.

Phages represented in each track:

- Track 1 : Mercedes_3
- Track 2 : HerculesXL_3, Tinyman4_3, Scissor2024_3
- Track 3 : Ixel_3
- Track 4 : Ixel_4
- Track 5 : Libre_3, Wardwill_3, Greenlvy_3, Fulton_3, Hasitha_3, CaptainRex_3, BaronJohn_3, LilTerminator_3, Zayuliv_3
- Track 6 : Alakazam_3
- Track 7 : Neferthena_3
- Track 8 : QuadZero_3
- Track 9 : Nebulous_3, Clock_3
- Track 10 : Zepp_3
- Track 11 : Jemerald_3, Juicer_3
- Track 12 : Chepli_3
- Track 13 : KatChan_3, Luna18_3
- Track 14 : Bernstein_65, Skylord_65, Armstrong_65, Brahms_65, Clayda5_67, Coltrane_65, Rollins_65
- Track 15 : Jabb_65, MsUbiquitous_65, CupcakePrincess_65
- Track 16 : Doobus_63
- Track 17 : Cashington_64
- Track 18 : Loviatar_63, SanaSana_64, Akino08_63, Stoor_62
- Track 19 : Finalfrontier_65, SirBeanington_65, PastaFagioli_66, Slay_66
- Track 20 : BelmontSKP_64, AnnaLie_64
- Track 21 : Albright_64, PhigPhack_67, SansAfet_66, Phisb_66, Abigail_64
- Track 22 : Eula_64, AylexOG_66, Nicky22_64
- Track 23 : Quenya_65
- Track 24 : Stromboli_62, DirtyBubble_62
- Track 25 : Franklin22_68
- Track 26 : Didgeridoo_70, BabyDaisy_67, IndyLu_67
- Track 27 : AvGardian_65
- Track 28 : Kamdara_61, ChiliPepper_61, Kieran_61
- Track 29 : Lahqtemish_65
- Track 30 : TukTuk_66, Lilo27_66
- Track 31 : BubbaBear_64
- Track 32 : Milomuff_66, Solea_67
- Track 33 : Pecas_65
- Track 34 : Softsoap_66, DickRichards_63
- Track 35 : Albedo_66

- Track 36 : Eden_66
- Track 37 : Gack_65
- Track 38 : Kate33_69
- Track 39 : Jovita_63, Swervy_65
- Track 40 : Kenzers_64
- Track 41 : QMacho_66, Johnathan_64
- Track 42 : Vitas_65
- Track 43 : CanFranMach_65
- Track 44 : Dismas_63, Rona_62
- Track 45 : Sharkboy_64
- Track 46 : LimaBean_64
- Track 47 : SarBear_65
- Track 48 : Avocadoman_64
- Track 49 : Elva_67
- Track 50 : BabyYoda_62, WalkingDead_65
- Track 51 : CroZenni_65
- Track 52 : Icarian_65, PondAmelia_77
- Track 53 : Bengal_67
- Track 54 : Burritobowl_66
- Track 55 : Arroyo_65
- Track 56 : Lynlen_65
- Track 57 : PierreOrion_63, Crisis_64, Paschalis_63, KaiHaiDragon_64, EarickHC_64
- Track 58 : Savannah_62, Scumberland_65, Piperis_64, Antares_63, Busephilis_62, Shotgun_63, Jollipop_64, PhedwardCullen_62, Quhwah_67, Kowalski_62, Honeyfin_64, Hermeonysus_63, Rockwell_62, Jefe_63, Ganandorf_62, BeagleBug_62, Yeti_65, LittleFortune_65, BrazzalePHS_62, Cranjis_64, PiperSansNom_64, Germa_65, Selwyn23_64, Onika_62, Pulchra_65, Ramiel05_62, Lucretia_63, Phrancesco_63
- Track 59 : NoodlelyBoi_64
- Track 60 : Phorgeous_63, CrazyRich_62
- Track 61 : Shrubaron_17
- Track 62 : Metamorphoo_17
- Track 63 : Fireman_16
- Track 64 : ClearAsMud_67, SirFrank_63
- Track 65 : Tyumbra_15
- Track 66 : RobsFeet_17
- Track 67 : Glorp_64
- Track 68 : Sparcetus_48, Bramble_48, LordBart_48, RikSengupta_48, Ajin_48, Kors_48, TinyMiny_48
- Track 69 : Cressida_41
- Track 70 : Cinna_39, MementoMori_40
- Track 71 : Matzah_40
- Track 72 : Count_81

Summary of Final Annotations (See graph section above for start numbers):

The start number called the most often in the published annotations is 37, it was called in 97 of the 143 non-draft genes in the pham.

Genes that call this "Most Annotated" start:

- Abigail_64, Akino08_63, Albedo_66, Albright_64, AnnaLie_64, Antares_63, Armstrong_65, Arroyo_65, AvGardian_65, Avocadoman_64, AylexOG_66, BabyDaisy_67, BabyYoda_62, BeagleBug_62, BelmontSKP_64, Bernstein_65, Brahms_65, BrazzalePHS_62, BubbaBear_64, Burritobowl_66, Busephilis_62, CanFranMach_65, Cashington_64, Cinna_39, Clayda5_67, ClearAsMud_67, Coltrane_65, Cranjiss_64, Cressida_41, Crisis_64, CroZenni_65, CupcakePrincess_65, DickRichards_63, Didgeridoo_70, DirtyBubble_62, Doobus_63, EarickHC_64, Eden_66, Elva_67, Eula_64, Finalfrontier_65, Franklin22_68, Gack_65, Ganandorf_62, Germa_65, Glorp_64, Hermeonysus_63, Honeyfin_64, Icarian_65, IndyLu_67, Jabb_65, Jefe_63, Johnathan_64, Jollipop_64, Jovita_63, KaiHaiDragon_64, Kate33_69, Kenzers_64, Kowalski_62, Lahqtemish_65, Lilo27_66, LimaBean_64, LittleFortune_65, Loviatar_63, Lucretia_63, Lynlen_65, Matzah_40, MementoMori_40, Milomuff_66, MsUbiquitous_65, Nicky22_64, NoodlelyBoi_64, Onika_62, Paschalis_63, PastaFagioli_66, PhedwardCullen_62, PhigPhack_67, Phisb_66, Phrancesco_63, PierreOrion_63, PiperSansNom_64, Piperis_64, PondAmelia_77, Pulchra_65, QMacho_66, Quhwah_67, Ramiel05_62, Rockwell_62, Rollins_65, SanaSana_64, SansAfet_66, SarBear_65, Savannah_62, Scumberland_65, Selwyn23_64, Shotgun_63, SirBeanington_65, SirFrank_63, Skylord_65, Slay_66, Softsoap_66, Solea_67, Stoor_62, Stromboli_62, Swervy_65, TukTuk_66, Vitas_65, WalkingDead_65, Yeti_65,

Genes that have the "Most Annotated" start but do not call it:

- Alakazam_3, Bengal_67, CrazyRich_62, Pecas_65, Phorgeous_63,

Genes that do not have the "Most Annotated" start:

- Ajin_48, BaronJohn_3, Bramble_48, CaptainRex_3, Chepli_3, ChiliPepper_61, Clock_3, Count_81, Dismas_63, Fireman_16, Fulton_3, GreenIvy_3, Hasitha_3, HerculesXL_3, Ixel_3, Ixel_4, Jemerald_3, Juicer_3, Kamdara_61, KatChan_3, Kieran_61, Kors_48, Librie_3, LilTerminator_3, LordBart_48, Luna18_3, Mercedes_3, Metamorphoo_17, Nebulous_3, Neferthena_3, QuadZero_3, Quenya_65, RikSengupta_48, RobsFeet_17, Rona_62, Scissor2024_3, Sharkboy_64, Shrubaron_17, Sparcetus_48, TinyMiny_48, Tinyman4_3, Tyumbra_15, Wardwill_3, Zayuliv_3, Zepp_3,

Summary by start number:

Start 34:

- Found in 6 of 159 (3.8%) of genes in pham
- Manual Annotations of this start: 1 of 143
- Called 33.3% of time when present
- Phage (with cluster) where this start called: Bengal_67 (EB), Pecas_65 (EB),

Start 36:

- Found in 31 of 159 (19.5%) of genes in pham
- Manual Annotations of this start: 2 of 143
- Called 6.5% of time when present
- Phage (with cluster) where this start called: CrazyRich_62 (EC), Phorgeous_63 (EC),

Start 37:

- Found in 114 of 159 (71.7%) of genes in pham
- Manual Annotations of this start: 97 of 143

- Called 95.6% of time when present
- Phage (with cluster) where this start called: Abigail_64 (EB), Akino08_63 (EB), Albedo_66 (EB), Albright_64 (EB), AnnaLie_64 (EB), Antares_63 (EC), Armstrong_65 (EB), Arroyo_65 (EB), AvGardian_65 (EB), Avocadoman_64 (EB), AylexOG_66 (EB), BabyDaisy_67 (EB), BabyYoda_62 (EB), BeagleBug_62 (EC), BelmontSKP_64 (EB), Bernstein_65 (EB), Brahms_65 (EB), BrazzalePHS_62 (EC), BubbaBear_64 (EB), Burritobowl_66 (EB), Busephilis_62 (EC), CanFranMach_65 (EB), Cashington_64 (EB), Cinna_39 (EI), Clayda5_67 (EB), ClearAsMud_67 (EC), Coltrane_65 (EB), Cranjis_64 (EC), Cressida_41 (EI), Crisis_64 (EC), CroZenni_65 (EB), CupcakePrincess_65 (EB), DickRichards_63 (EB), Didgeridoo_70 (EB), DirtyBubble_62 (EB), Doobus_63 (EB), EarickHC_64 (EC), Eden_66 (EB), Elva_67 (EB), Eula_64 (EB), Finalfrontier_65 (EB), Franklin22_68 (EB), Gack_65 (EB), Ganandorf_62 (EC), Germa_65 (EC), Glorp_64 (EC), Hermeonysus_63 (EC), Honeyfin_64 (EC), Icarian_65 (EB), IndyLu_67 (EB), Jabb_65 (EB), Jefe_63 (EC), Johnathan_64 (EB), Jollipop_64 (EC), Jovita_63 (EB), KaiHaiDragon_64 (EC), Kate33_69 (EB), Kenzers_64 (EB), Kowalski_62 (EC), Lahqtemish_65 (EB), Lilo27_66 (EB), LimaBean_64 (EB), LittleFortune_65 (EC), Loviatar_63 (EB), Lucretia_63 (EC), Lynlen_65 (EB), Matzah_40 (EI), MementoMori_40 (EI), Milomuff_66 (EB), MsUbiquitous_65 (EB), Nicky22_64 (EB), NoodlelyBoi_64 (EC), Onika_62 (EC), Paschalis_63 (EC), PastaFagioli_66 (EB), PhedwardCullen_62 (EC), PhigPhack_67 (EB), Phisb_66 (EB), Phrancesco_63 (EC), PierreOrion_63 (EC), PiperSansNom_64 (EC), Piperis_64 (EC), PondAmelia_77 (EB), Pulchra_65 (EC), QMacho_66 (EB), Quhwah_67 (EC), Ramiel05_62 (EC), Rockwell_62 (EC), Rollins_65 (EB), SanaSana_64 (EB), SansAfet_66 (EB), SarBear_65 (EB), Savannah_62 (EC), Scumberland_65 (EC), Selwyn23_64 (EC), Shotgun_63 (EC), SirBeanington_65 (EB), SirFrank_63 (EC), Skylord_65 (EB), Slay_66 (EB), Softsoap_66 (EB), Solea_67 (EB), Stoor_62 (EB), Stromboli_62 (EB), Swervy_65 (EB), TukTuk_66 (EB), Vitas_65 (EB), WalkingDead_65 (EB), Yeti_65 (EC),

Start 38:

- Found in 7 of 159 (4.4%) of genes in pham
- Manual Annotations of this start: 6 of 143
- Called 100.0% of time when present
- Phage (with cluster) where this start called: ChiliPepper_61 (EB), Dismas_63 (EB), Ixel_4 (EA11), Kamdara_61 (EB), Kieran_61 (EB), Rona_62 (EB), Sharkboy_64 (EB),

Start 39:

- Found in 1 of 159 (0.6%) of genes in pham
- Manual Annotations of this start: 1 of 143
- Called 100.0% of time when present
- Phage (with cluster) where this start called: Count_81 (EL),

Start 40:

- Found in 25 of 159 (15.7%) of genes in pham
- Manual Annotations of this start: 23 of 143
- Called 100.0% of time when present
- Phage (with cluster) where this start called: Alakazam_3 (EA5), BaronJohn_3 (EA5), CaptainRex_3 (EA5), Chepli_3 (EA6), Clock_3 (EA5), Fulton_3 (EA5), GreenIvy_3 (EA5), Hasitha_3 (EA5), HerculesXL_3 (EA11), Ixel_3 (EA11), Jemerald_3 (EA6), Juicer_3 (EA6), KatChan_3 (EA6), Librie_3 (EA5), LilTerminator_3 (EA5), Luna18_3 (EA6), Mercedes_3 (EA), Nebulous_3 (EA5), Neferthena_3 (EA5), QuadZero_3 (EA5), Scissor2024_3 (EA11), Tinyman4_3 (EA11), Wardwill_3 (EA5), Zayuliv_3 (EA5), Zepp_3 (EA5),

Start 41:

- Found in 1 of 159 (0.6%) of genes in pham
- Manual Annotations of this start: 1 of 143
- Called 100.0% of time when present
- Phage (with cluster) where this start called: Quenya_65 (EB),

Start 43:

- Found in 7 of 159 (4.4%) of genes in pham
- Manual Annotations of this start: 7 of 143
- Called 100.0% of time when present
- Phage (with cluster) where this start called: Ajin_48 (EF), Bramble_48 (EF), Kors_48 (EF), LordBart_48 (EF), RikSengupta_48 (EF), Sparcetus_48 (EF), TinyMiny_48 (EF),

Start 44:

- Found in 5 of 159 (3.1%) of genes in pham
- Manual Annotations of this start: 5 of 143
- Called 100.0% of time when present
- Phage (with cluster) where this start called: Fireman_16 (EC), Metamorphoo_17 (EC), RobsFeet_17 (EC), Shrubaron_17 (EC), Tyrumbra_15 (EC),

Summary by clusters:

There are 9 clusters represented in this pham: EL, EI, EF, EA, EC, EB, EA11, EA5, EA6,

Info for manual annotations of cluster EA:

- Start number 40 was manually annotated 1 time for cluster EA.

Info for manual annotations of cluster EA11:

- Start number 38 was manually annotated 1 time for cluster EA11.
- Start number 40 was manually annotated 3 times for cluster EA11.

Info for manual annotations of cluster EA5:

- Start number 40 was manually annotated 14 times for cluster EA5.

Info for manual annotations of cluster EA6:

- Start number 40 was manually annotated 5 times for cluster EA6.

Info for manual annotations of cluster EB:

- Start number 34 was manually annotated 1 time for cluster EB.
- Start number 37 was manually annotated 61 times for cluster EB.
- Start number 38 was manually annotated 5 times for cluster EB.
- Start number 41 was manually annotated 1 time for cluster EB.

Info for manual annotations of cluster EC:

- Start number 36 was manually annotated 2 times for cluster EC.
- Start number 37 was manually annotated 32 times for cluster EC.
- Start number 44 was manually annotated 5 times for cluster EC.

Info for manual annotations of cluster EF:

- Start number 43 was manually annotated 7 times for cluster EF.

Info for manual annotations of cluster EI:

- Start number 37 was manually annotated 4 times for cluster EI.

Info for manual annotations of cluster EL:

- Start number 39 was manually annotated 1 time for cluster EL.

Gene Information:

Gene: Abigail_64 Start: 39315, Stop: 39497, Start Num: 37

Candidate Starts for Abigail_64:

(Start: 37 @39315 has 97 MA's), (51, 39360), (65, 39450),

Gene: Ajin_48 Start: 30967, Stop: 31113, Start Num: 43

Candidate Starts for Ajin_48:

(32, 30898), (42, 30964), (Start: 43 @30967 has 7 MA's), (57, 31033),

Gene: Akino08_63 Start: 40775, Stop: 40960, Start Num: 37

Candidate Starts for Akino08_63:

(Start: 37 @40775 has 97 MA's), (52, 40826), (61, 40886),

Gene: Alakazam_3 Start: 2071, Stop: 2229, Start Num: 40

Candidate Starts for Alakazam_3:

(Start: 37 @2065 has 97 MA's), (Start: 40 @2071 has 23 MA's), (42, 2083), (54, 2137), (57, 2152),

Gene: Albedo_66 Start: 40235, Stop: 40417, Start Num: 37

Candidate Starts for Albedo_66:

(Start: 37 @40235 has 97 MA's), (51, 40280), (65, 40370),

Gene: Albright_64 Start: 39297, Stop: 39479, Start Num: 37

Candidate Starts for Albright_64:

(Start: 37 @39297 has 97 MA's), (51, 39342), (65, 39432),

Gene: AnnaLie_64 Start: 39976, Stop: 40158, Start Num: 37

Candidate Starts for AnnaLie_64:

(Start: 37 @39976 has 97 MA's), (65, 40111),

Gene: Antares_63 Start: 40647, Stop: 40802, Start Num: 37

Candidate Starts for Antares_63:

(Start: 36 @40644 has 2 MA's), (Start: 37 @40647 has 97 MA's), (57, 40719),

Gene: Armstrong_65 Start: 38306, Stop: 38512, Start Num: 37

Candidate Starts for Armstrong_65:

(Start: 37 @38306 has 97 MA's), (61, 38414), (64, 38435), (66, 38456), (68, 38498),

Gene: Arroyo_65 Start: 40440, Stop: 40622, Start Num: 37

Candidate Starts for Arroyo_65:

(Start: 37 @40440 has 97 MA's), (48, 40470), (51, 40485), (65, 40575),

Gene: AvGardian_65 Start: 40037, Stop: 40219, Start Num: 37

Candidate Starts for AvGardian_65:

(Start: 37 @40037 has 97 MA's), (61, 40145), (62, 40148),

Gene: Avocadoman_64 Start: 39447, Stop: 39629, Start Num: 37
Candidate Starts for Avocadoman_64:
(35, 39441), (Start: 37 @39447 has 97 MA's), (48, 39477), (65, 39582),

Gene: AylexOG_66 Start: 40061, Stop: 40243, Start Num: 37
Candidate Starts for AylexOG_66:
(Start: 37 @40061 has 97 MA's), (51, 40106), (65, 40196),

Gene: BabyDaisy_67 Start: 40786, Stop: 40968, Start Num: 37
Candidate Starts for BabyDaisy_67:
(Start: 37 @40786 has 97 MA's), (48, 40816), (51, 40831),

Gene: BabyYoda_62 Start: 39683, Stop: 39868, Start Num: 37
Candidate Starts for BabyYoda_62:
(Start: 37 @39683 has 97 MA's), (46, 39701), (61, 39791), (65, 39818),

Gene: BaronJohn_3 Start: 1963, Stop: 2109, Start Num: 40
Candidate Starts for BaronJohn_3:
(Start: 40 @1963 has 23 MA's), (57, 2029),

Gene: BeagleBug_62 Start: 40427, Stop: 40582, Start Num: 37
Candidate Starts for BeagleBug_62:
(Start: 36 @40424 has 2 MA's), (Start: 37 @40427 has 97 MA's), (57, 40499),

Gene: BelmontSKP_64 Start: 39976, Stop: 40158, Start Num: 37
Candidate Starts for BelmontSKP_64:
(Start: 37 @39976 has 97 MA's), (65, 40111),

Gene: Bengal_67 Start: 40195, Stop: 40389, Start Num: 34
Candidate Starts for Bengal_67:
(Start: 34 @40195 has 1 MA's), (Start: 37 @40207 has 97 MA's), (65, 40342),

Gene: Bernstein_65 Start: 38304, Stop: 38510, Start Num: 37
Candidate Starts for Bernstein_65:
(Start: 37 @38304 has 97 MA's), (61, 38412), (64, 38433), (66, 38454), (68, 38496),

Gene: Brahms_65 Start: 38206, Stop: 38412, Start Num: 37
Candidate Starts for Brahms_65:
(Start: 37 @38206 has 97 MA's), (61, 38314), (64, 38335), (66, 38356), (68, 38398),

Gene: Bramble_48 Start: 31016, Stop: 31162, Start Num: 43
Candidate Starts for Bramble_48:
(32, 30947), (42, 31013), (Start: 43 @31016 has 7 MA's), (57, 31082),

Gene: BrazzalePHS_62 Start: 40409, Stop: 40564, Start Num: 37
Candidate Starts for BrazzalePHS_62:
(Start: 36 @40406 has 2 MA's), (Start: 37 @40409 has 97 MA's), (57, 40481),

Gene: BubbaBear_64 Start: 40228, Stop: 40410, Start Num: 37
Candidate Starts for BubbaBear_64:
(14, 40021), (Start: 37 @40228 has 97 MA's), (51, 40273), (65, 40363),

Gene: Burritobowl_66 Start: 39798, Stop: 39980, Start Num: 37
Candidate Starts for Burritobowl_66:
(Start: 37 @39798 has 97 MA's), (48, 39828), (51, 39843), (65, 39933),

Gene: Busephilis_62 Start: 40354, Stop: 40509, Start Num: 37
Candidate Starts for Busephilis_62:
(Start: 36 @40351 has 2 MA's), (Start: 37 @40354 has 97 MA's), (57, 40426),

Gene: CanFranMach_65 Start: 39840, Stop: 40022, Start Num: 37
Candidate Starts for CanFranMach_65:
(Start: 37 @39840 has 97 MA's), (61, 39948), (65, 39975),

Gene: CaptainRex_3 Start: 1963, Stop: 2109, Start Num: 40
Candidate Starts for CaptainRex_3:
(Start: 40 @1963 has 23 MA's), (57, 2029),

Gene: Cashington_64 Start: 39539, Stop: 39721, Start Num: 37
Candidate Starts for Cashington_64:
(Start: 37 @39539 has 97 MA's), (51, 39584), (65, 39674),

Gene: Chepli_3 Start: 2101, Stop: 2247, Start Num: 40
Candidate Starts for Chepli_3:
(Start: 40 @2101 has 23 MA's), (55, 2155), (57, 2167),

Gene: ChiliPepper_61 Start: 40043, Stop: 40222, Start Num: 38
Candidate Starts for ChiliPepper_61:
(5, 39632), (Start: 38 @40043 has 6 MA's), (46, 40058), (60, 40136), (61, 40148),

Gene: Cinna_39 Start: 31034, Stop: 31174, Start Num: 37
Candidate Starts for Cinna_39:
(Start: 37 @31034 has 97 MA's), (56, 31103),

Gene: Clayda5_67 Start: 38272, Stop: 38478, Start Num: 37
Candidate Starts for Clayda5_67:
(Start: 37 @38272 has 97 MA's), (61, 38380), (64, 38401), (66, 38422), (68, 38464),

Gene: ClearAsMud_67 Start: 40937, Stop: 41092, Start Num: 37
Candidate Starts for ClearAsMud_67:
(8, 40664), (23, 40811), (Start: 37 @40937 has 97 MA's), (47, 40955), (50, 40976), (53, 40991), (54, 40994), (57, 41009),

Gene: Clock_3 Start: 2104, Stop: 2262, Start Num: 40
Candidate Starts for Clock_3:
(16, 1921), (21, 1969), (Start: 40 @2104 has 23 MA's), (55, 2173), (57, 2185), (61, 2218),

Gene: Coltrane_65 Start: 38206, Stop: 38412, Start Num: 37
Candidate Starts for Coltrane_65:
(Start: 37 @38206 has 97 MA's), (61, 38314), (64, 38335), (66, 38356), (68, 38398),

Gene: Count_81 Start: 55860, Stop: 56000, Start Num: 39
Candidate Starts for Count_81:
(29, 55776), (Start: 39 @55860 has 1 MA's), (55, 55914), (59, 55935),

Gene: Cranjis_64 Start: 40602, Stop: 40757, Start Num: 37
Candidate Starts for Cranjis_64:
(Start: 36 @40599 has 2 MA's), (Start: 37 @40602 has 97 MA's), (57, 40674),

Gene: CrazyRich_62 Start: 40408, Stop: 40566, Start Num: 36
Candidate Starts for CrazyRich_62:
(Start: 36 @40408 has 2 MA's), (Start: 37 @40411 has 97 MA's), (57, 40483),

Gene: Cressida_41 Start: 30483, Stop: 30641, Start Num: 37
Candidate Starts for Cressida_41:
(1, 29526), (2, 29640), (3, 29778), (20, 30348), (Start: 37 @30483 has 97 MA's), (56, 30552), (58, 30561), (63, 30606),

Gene: Crisis_64 Start: 40417, Stop: 40572, Start Num: 37
Candidate Starts for Crisis_64:
(8, 40159), (17, 40258), (22, 40303), (Start: 37 @40417 has 97 MA's), (57, 40489),

Gene: CroZenni_65 Start: 39783, Stop: 39965, Start Num: 37
Candidate Starts for CroZenni_65:
(12, 39564), (15, 39594), (Start: 37 @39783 has 97 MA's), (51, 39828), (65, 39918),

Gene: CupcakePrincess_65 Start: 39785, Stop: 39967, Start Num: 37
Candidate Starts for CupcakePrincess_65:
(18, 39659), (25, 39698), (33, 39752), (Start: 37 @39785 has 97 MA's), (51, 39830), (65, 39920),

Gene: DickRichards_63 Start: 39754, Stop: 39936, Start Num: 37
Candidate Starts for DickRichards_63:
(Start: 37 @39754 has 97 MA's), (48, 39784), (51, 39799), (65, 39889),

Gene: Didgeridoo_70 Start: 40896, Stop: 41078, Start Num: 37
Candidate Starts for Didgeridoo_70:
(Start: 37 @40896 has 97 MA's), (48, 40926), (51, 40941),

Gene: DirtyBubble_62 Start: 39722, Stop: 39907, Start Num: 37
Candidate Starts for DirtyBubble_62:
(Start: 37 @39722 has 97 MA's), (46, 39740), (61, 39830), (65, 39857),

Gene: Dismas_63 Start: 40180, Stop: 40359, Start Num: 38
Candidate Starts for Dismas_63:
(Start: 38 @40180 has 6 MA's), (46, 40195), (60, 40273), (61, 40285),

Gene: Doobus_63 Start: 39609, Stop: 39791, Start Num: 37
Candidate Starts for Doobus_63:
(Start: 37 @39609 has 97 MA's), (48, 39639), (65, 39744),

Gene: EarickHC_64 Start: 40339, Stop: 40494, Start Num: 37
Candidate Starts for EarickHC_64:
(8, 40081), (17, 40180), (22, 40225), (Start: 37 @40339 has 97 MA's), (57, 40411),

Gene: Eden_66 Start: 39118, Stop: 39339, Start Num: 37
Candidate Starts for Eden_66:
(Start: 37 @39118 has 97 MA's), (66, 39271),

Gene: Elva_67 Start: 40561, Stop: 40749, Start Num: 37
Candidate Starts for Elva_67:
(Start: 37 @40561 has 97 MA's), (61, 40672), (65, 40699),

Gene: Eula_64 Start: 39518, Stop: 39700, Start Num: 37
Candidate Starts for Eula_64:
(Start: 37 @39518 has 97 MA's), (51, 39563), (65, 39653),

Gene: Finalfrontier_65 Start: 40502, Stop: 40684, Start Num: 37
Candidate Starts for Finalfrontier_65:
(Start: 37 @40502 has 97 MA's), (51, 40547), (65, 40637),

Gene: Fireman_16 Start: 6897, Stop: 7046, Start Num: 44
Candidate Starts for Fireman_16:
(24, 6774), (26, 6777), (28, 6792), (30, 6813), (Start: 44 @6897 has 5 MA's), (46, 6903), (57, 6963),
(64, 7020),

Gene: Franklin22_68 Start: 38842, Stop: 39054, Start Num: 37
Candidate Starts for Franklin22_68:
(Start: 37 @38842 has 97 MA's), (61, 38950), (66, 38995),

Gene: Fulton_3 Start: 1963, Stop: 2109, Start Num: 40
Candidate Starts for Fulton_3:
(Start: 40 @1963 has 23 MA's), (57, 2029),

Gene: Gack_65 Start: 38747, Stop: 38944, Start Num: 37
Candidate Starts for Gack_65:
(6, 38459), (Start: 37 @38747 has 97 MA's), (66, 38897),

Gene: Ganandorf_62 Start: 40435, Stop: 40590, Start Num: 37
Candidate Starts for Ganandorf_62:
(Start: 36 @40432 has 2 MA's), (Start: 37 @40435 has 97 MA's), (57, 40507),

Gene: Germa_65 Start: 40265, Stop: 40420, Start Num: 37
Candidate Starts for Germa_65:
(Start: 36 @40262 has 2 MA's), (Start: 37 @40265 has 97 MA's), (57, 40337),

Gene: Glorp_64 Start: 40402, Stop: 40557, Start Num: 37
Candidate Starts for Glorp_64:
(Start: 36 @40399 has 2 MA's), (Start: 37 @40402 has 97 MA's), (57, 40474),

Gene: Greenlvy_3 Start: 1963, Stop: 2109, Start Num: 40
Candidate Starts for Greenlvy_3:
(Start: 40 @1963 has 23 MA's), (57, 2029),

Gene: Hasitha_3 Start: 1963, Stop: 2109, Start Num: 40
Candidate Starts for Hasitha_3:
(Start: 40 @1963 has 23 MA's), (57, 2029),

Gene: HerculesXL_3 Start: 1952, Stop: 2107, Start Num: 40
Candidate Starts for HerculesXL_3:
(Start: 40 @1952 has 23 MA's), (57, 2018),

Gene: Hermeonysus_63 Start: 40330, Stop: 40485, Start Num: 37
Candidate Starts for Hermeonysus_63:
(Start: 36 @40327 has 2 MA's), (Start: 37 @40330 has 97 MA's), (57, 40402),

Gene: Honeyfin_64 Start: 40590, Stop: 40745, Start Num: 37
Candidate Starts for Honeyfin_64:
(Start: 36 @40587 has 2 MA's), (Start: 37 @40590 has 97 MA's), (57, 40662),

Gene: Icarian_65 Start: 40372, Stop: 40557, Start Num: 37
Candidate Starts for Icarian_65:
(Start: 37 @40372 has 97 MA's), (52, 40423), (61, 40483),

Gene: IndyLu_67 Start: 40517, Stop: 40699, Start Num: 37
Candidate Starts for IndyLu_67:
(Start: 37 @40517 has 97 MA's), (48, 40547), (51, 40562),

Gene: Ixel_3 Start: 2066, Stop: 2212, Start Num: 40
Candidate Starts for Ixel_3:
(Start: 40 @2066 has 23 MA's), (45, 2072), (57, 2132),

Gene: Ixel_4 Start: 2216, Stop: 2365, Start Num: 38
Candidate Starts for Ixel_4:
(Start: 38 @2216 has 6 MA's), (52, 2261), (60, 2309),

Gene: Jabb_65 Start: 39785, Stop: 39967, Start Num: 37
Candidate Starts for Jabb_65:
(18, 39659), (25, 39698), (33, 39752), (Start: 37 @39785 has 97 MA's), (51, 39830), (65, 39920),

Gene: Jefe_63 Start: 40388, Stop: 40543, Start Num: 37
Candidate Starts for Jefe_63:
(Start: 36 @40385 has 2 MA's), (Start: 37 @40388 has 97 MA's), (57, 40460),

Gene: Jemerald_3 Start: 2077, Stop: 2223, Start Num: 40
Candidate Starts for Jemerald_3:
(7, 1798), (18, 1930), (19, 1933), (27, 1981), (31, 2014), (Start: 40 @2077 has 23 MA's), (47, 2089),
(49, 2107), (57, 2143),

Gene: Johnathan_64 Start: 39298, Stop: 39480, Start Num: 37
Candidate Starts for Johnathan_64:
(Start: 37 @39298 has 97 MA's), (65, 39433),

Gene: Jollipop_64 Start: 40770, Stop: 40925, Start Num: 37
Candidate Starts for Jollipop_64:
(Start: 36 @40767 has 2 MA's), (Start: 37 @40770 has 97 MA's), (57, 40842),

Gene: Jovita_63 Start: 39286, Stop: 39468, Start Num: 37
Candidate Starts for Jovita_63:
(Start: 37 @39286 has 97 MA's), (51, 39331), (65, 39421),

Gene: Juicer_3 Start: 2077, Stop: 2223, Start Num: 40
Candidate Starts for Juicer_3:
(7, 1798), (18, 1930), (19, 1933), (27, 1981), (31, 2014), (Start: 40 @2077 has 23 MA's), (47, 2089),
(49, 2107), (57, 2143),

Gene: KaiHaiDragon_64 Start: 40339, Stop: 40494, Start Num: 37
Candidate Starts for KaiHaiDragon_64:
(8, 40081), (17, 40180), (22, 40225), (Start: 37 @40339 has 97 MA's), (57, 40411),

Gene: Kamdara_61 Start: 40002, Stop: 40181, Start Num: 38
Candidate Starts for Kamdara_61:
(5, 39591), (Start: 38 @40002 has 6 MA's), (46, 40017), (60, 40095), (61, 40107),

Gene: KatChan_3 Start: 2101, Stop: 2247, Start Num: 40
Candidate Starts for KatChan_3:
(Start: 40 @2101 has 23 MA's), (57, 2167),

Gene: Kate33_69 Start: 40247, Stop: 40429, Start Num: 37
Candidate Starts for Kate33_69:
(Start: 37 @40247 has 97 MA's), (48, 40277), (51, 40292),

Gene: Kenzers_64 Start: 39369, Stop: 39551, Start Num: 37
Candidate Starts for Kenzers_64:
(10, 39138), (Start: 34 @39357 has 1 MA's), (Start: 37 @39369 has 97 MA's), (51, 39414), (65, 39504),

Gene: Kieran_61 Start: 40005, Stop: 40184, Start Num: 38
Candidate Starts for Kieran_61:
(5, 39594), (Start: 38 @40005 has 6 MA's), (46, 40020), (60, 40098), (61, 40110),

Gene: Kors_48 Start: 31044, Stop: 31190, Start Num: 43
Candidate Starts for Kors_48:
(32, 30975), (42, 31041), (Start: 43 @31044 has 7 MA's), (57, 31110),

Gene: Kowalski_62 Start: 40404, Stop: 40559, Start Num: 37
Candidate Starts for Kowalski_62:
(Start: 36 @40401 has 2 MA's), (Start: 37 @40404 has 97 MA's), (57, 40476),

Gene: Lahqtemish_65 Start: 40719, Stop: 40901, Start Num: 37
Candidate Starts for Lahqtemish_65:
(Start: 37 @40719 has 97 MA's), (48, 40749), (51, 40764), (65, 40854),

Gene: Librie_3 Start: 1963, Stop: 2109, Start Num: 40
Candidate Starts for Librie_3:
(Start: 40 @1963 has 23 MA's), (57, 2029),

Gene: LilTerminator_3 Start: 1963, Stop: 2109, Start Num: 40
Candidate Starts for LilTerminator_3:
(Start: 40 @1963 has 23 MA's), (57, 2029),

Gene: Lilo27_66 Start: 40019, Stop: 40201, Start Num: 37
Candidate Starts for Lilo27_66:
(Start: 34 @40007 has 1 MA's), (Start: 37 @40019 has 97 MA's), (51, 40064), (65, 40154),

Gene: LimaBean_64 Start: 39192, Stop: 39374, Start Num: 37
Candidate Starts for LimaBean_64:
(Start: 37 @39192 has 97 MA's), (48, 39222), (65, 39327),

Gene: LittleFortune_65 Start: 40695, Stop: 40850, Start Num: 37
Candidate Starts for LittleFortune_65:
(Start: 36 @40692 has 2 MA's), (Start: 37 @40695 has 97 MA's), (57, 40767),

Gene: LordBart_48 Start: 30953, Stop: 31099, Start Num: 43
Candidate Starts for LordBart_48:
(32, 30884), (42, 30950), (Start: 43 @30953 has 7 MA's), (57, 31019),

Gene: Loviatar_63 Start: 40790, Stop: 40975, Start Num: 37
Candidate Starts for Loviatar_63:
(Start: 37 @40790 has 97 MA's), (52, 40841), (61, 40901),

Gene: Lucretia_63 Start: 40320, Stop: 40475, Start Num: 37
Candidate Starts for Lucretia_63:
(Start: 36 @40317 has 2 MA's), (Start: 37 @40320 has 97 MA's), (57, 40392),

Gene: Luna18_3 Start: 2101, Stop: 2247, Start Num: 40
Candidate Starts for Luna18_3:
(Start: 40 @2101 has 23 MA's), (57, 2167),

Gene: Lynlen_65 Start: 39522, Stop: 39704, Start Num: 37
Candidate Starts for Lynlen_65:
(Start: 34 @39510 has 1 MA's), (Start: 37 @39522 has 97 MA's), (51, 39567), (65, 39657),

Gene: Matzah_40 Start: 30974, Stop: 31114, Start Num: 37
Candidate Starts for Matzah_40:
(3, 30272), (4, 30299), (13, 30749), (20, 30839), (Start: 37 @30974 has 97 MA's), (56, 31043),

Gene: MementoMori_40 Start: 30722, Stop: 30862, Start Num: 37
Candidate Starts for MementoMori_40:
(Start: 37 @30722 has 97 MA's), (56, 30791),

Gene: Mercedes_3 Start: 1955, Stop: 2101, Start Num: 40
Candidate Starts for Mercedes_3:
(Start: 40 @1955 has 23 MA's), (57, 2021), (60, 2042), (62, 2057), (65, 2081),

Gene: Metamorphoo_17 Start: 7070, Stop: 7219, Start Num: 44
Candidate Starts for Metamorphoo_17:
(24, 6947), (26, 6950), (28, 6965), (30, 6986), (Start: 44 @7070 has 5 MA's), (46, 7076), (50, 7103),
(57, 7136),

Gene: Milomuff_66 Start: 40067, Stop: 40249, Start Num: 37
Candidate Starts for Milomuff_66:
(Start: 37 @40067 has 97 MA's), (65, 40202),

Gene: MsUbiquitous_65 Start: 39785, Stop: 39967, Start Num: 37
Candidate Starts for MsUbiquitous_65:
(18, 39659), (25, 39698), (33, 39752), (Start: 37 @39785 has 97 MA's), (51, 39830), (65, 39920),

Gene: Nebulous_3 Start: 2113, Stop: 2271, Start Num: 40
Candidate Starts for Nebulous_3:
(16, 1930), (21, 1978), (Start: 40 @2113 has 23 MA's), (55, 2182), (57, 2194), (61, 2227),

Gene: Neferthena_3 Start: 2107, Stop: 2265, Start Num: 40
Candidate Starts for Neferthena_3:
(15, 1906), (16, 1924), (21, 1972), (Start: 40 @2107 has 23 MA's), (55, 2176), (57, 2188), (61, 2221),

Gene: Nicky22_64 Start: 39961, Stop: 40143, Start Num: 37
Candidate Starts for Nicky22_64:
(Start: 37 @39961 has 97 MA's), (51, 40006), (65, 40096),

Gene: NoodlelyBoi_64 Start: 41186, Stop: 41341, Start Num: 37
Candidate Starts for NoodlelyBoi_64:
(Start: 37 @41186 has 97 MA's), (47, 41204), (50, 41225), (53, 41240), (54, 41243), (57, 41258),

Gene: Onika_62 Start: 40413, Stop: 40568, Start Num: 37
Candidate Starts for Onika_62:
(Start: 36 @40410 has 2 MA's), (Start: 37 @40413 has 97 MA's), (57, 40485),

Gene: Paschalis_63 Start: 40435, Stop: 40590, Start Num: 37
Candidate Starts for Paschalis_63:
(8, 40177), (17, 40276), (22, 40321), (Start: 37 @40435 has 97 MA's), (57, 40507),

Gene: PastaFagioli_66 Start: 40470, Stop: 40652, Start Num: 37
Candidate Starts for PastaFagioli_66:
(Start: 37 @40470 has 97 MA's), (51, 40515), (65, 40605),

Gene: Pecas_65 Start: 39807, Stop: 40001, Start Num: 34
Candidate Starts for Pecas_65:
(10, 39612), (11, 39615), (Start: 34 @39807 has 1 MA's), (Start: 37 @39819 has 97 MA's), (51, 39864),
(65, 39954),

Gene: PhedwardCullen_62 Start: 40158, Stop: 40313, Start Num: 37
Candidate Starts for PhedwardCullen_62:
(Start: 36 @40155 has 2 MA's), (Start: 37 @40158 has 97 MA's), (57, 40230),

Gene: PhigPhack_67 Start: 39894, Stop: 40076, Start Num: 37
Candidate Starts for PhigPhack_67:
(Start: 37 @39894 has 97 MA's), (51, 39939), (65, 40029),

Gene: Phisb_66 Start: 39867, Stop: 40049, Start Num: 37
Candidate Starts for Phisb_66:
(Start: 37 @39867 has 97 MA's), (51, 39912), (65, 40002),

Gene: Phorgeous_63 Start: 40218, Stop: 40376, Start Num: 36
Candidate Starts for Phorgeous_63:
(Start: 36 @40218 has 2 MA's), (Start: 37 @40221 has 97 MA's), (57, 40293),

Gene: Phrancesco_63 Start: 40544, Stop: 40699, Start Num: 37
Candidate Starts for Phrancesco_63:
(Start: 36 @40541 has 2 MA's), (Start: 37 @40544 has 97 MA's), (57, 40616),

Gene: PierreOrion_63 Start: 40644, Stop: 40799, Start Num: 37
Candidate Starts for PierreOrion_63:
(8, 40386), (17, 40485), (22, 40530), (Start: 37 @40644 has 97 MA's), (57, 40716),

Gene: PiperSansNom_64 Start: 40726, Stop: 40881, Start Num: 37
Candidate Starts for PiperSansNom_64:
(Start: 36 @40723 has 2 MA's), (Start: 37 @40726 has 97 MA's), (57, 40798),

Gene: Piperis_64 Start: 40346, Stop: 40501, Start Num: 37
Candidate Starts for Piperis_64:
(Start: 36 @40343 has 2 MA's), (Start: 37 @40346 has 97 MA's), (57, 40418),

Gene: PondAmelia_77 Start: 39749, Stop: 39934, Start Num: 37
Candidate Starts for PondAmelia_77:
(Start: 37 @39749 has 97 MA's), (52, 39800), (61, 39860),

Gene: Pulchra_65 Start: 40742, Stop: 40897, Start Num: 37
Candidate Starts for Pulchra_65:
(Start: 36 @40739 has 2 MA's), (Start: 37 @40742 has 97 MA's), (57, 40814),

Gene: QMacho_66 Start: 39998, Stop: 40180, Start Num: 37
Candidate Starts for QMacho_66:
(Start: 37 @39998 has 97 MA's), (65, 40133),

Gene: QuadZero_3 Start: 1963, Stop: 2109, Start Num: 40
Candidate Starts for QuadZero_3:
(Start: 40 @1963 has 23 MA's), (57, 2029),

Gene: Quenya_65 Start: 40431, Stop: 40655, Start Num: 41
Candidate Starts for Quenya_65:
(Start: 41 @40431 has 1 MA's), (61, 40539), (67, 40614),

Gene: Quhwah_67 Start: 41034, Stop: 41189, Start Num: 37
Candidate Starts for Quhwah_67:
(Start: 36 @41031 has 2 MA's), (Start: 37 @41034 has 97 MA's), (57, 41106),

Gene: Ramiel05_62 Start: 40404, Stop: 40559, Start Num: 37
Candidate Starts for Ramiel05_62:
(Start: 36 @40401 has 2 MA's), (Start: 37 @40404 has 97 MA's), (57, 40476),

Gene: RikSengupta_48 Start: 31081, Stop: 31227, Start Num: 43
Candidate Starts for RikSengupta_48:
(32, 31012), (42, 31078), (Start: 43 @31081 has 7 MA's), (57, 31147),

Gene: RobsFeet_17 Start: 6912, Stop: 7061, Start Num: 44
Candidate Starts for RobsFeet_17:
(Start: 44 @6912 has 5 MA's), (50, 6945), (57, 6978),

Gene: Rockwell_62 Start: 40437, Stop: 40592, Start Num: 37
Candidate Starts for Rockwell_62:
(Start: 36 @40434 has 2 MA's), (Start: 37 @40437 has 97 MA's), (57, 40509),

Gene: Rollins_65 Start: 38304, Stop: 38510, Start Num: 37
Candidate Starts for Rollins_65:
(Start: 37 @38304 has 97 MA's), (61, 38412), (64, 38433), (66, 38454), (68, 38496),

Gene: Rona_62 Start: 40171, Stop: 40350, Start Num: 38

Candidate Starts for Rona_62:
(Start: 38 @40171 has 6 MA's), (46, 40186), (60, 40264), (61, 40276),

Gene: SanaSana_64 Start: 40133, Stop: 40318, Start Num: 37
Candidate Starts for SanaSana_64:
(Start: 37 @40133 has 97 MA's), (52, 40184), (61, 40244),

Gene: SansAfet_66 Start: 39843, Stop: 40025, Start Num: 37
Candidate Starts for SansAfet_66:
(Start: 37 @39843 has 97 MA's), (51, 39888), (65, 39978),

Gene: SarBear_65 Start: 39611, Stop: 39793, Start Num: 37
Candidate Starts for SarBear_65:
(9, 39398), (Start: 37 @39611 has 97 MA's), (51, 39656), (65, 39746),

Gene: Savannah_62 Start: 40464, Stop: 40619, Start Num: 37
Candidate Starts for Savannah_62:
(Start: 36 @40461 has 2 MA's), (Start: 37 @40464 has 97 MA's), (57, 40536),

Gene: Scissor2024_3 Start: 1952, Stop: 2107, Start Num: 40
Candidate Starts for Scissor2024_3:
(Start: 40 @1952 has 23 MA's), (57, 2018),

Gene: Scumberland_65 Start: 40659, Stop: 40814, Start Num: 37
Candidate Starts for Scumberland_65:
(Start: 36 @40656 has 2 MA's), (Start: 37 @40659 has 97 MA's), (57, 40731),

Gene: Selwyn23_64 Start: 40576, Stop: 40731, Start Num: 37
Candidate Starts for Selwyn23_64:
(Start: 36 @40573 has 2 MA's), (Start: 37 @40576 has 97 MA's), (57, 40648),

Gene: Sharkboy_64 Start: 40536, Stop: 40715, Start Num: 38
Candidate Starts for Sharkboy_64:
(Start: 38 @40536 has 6 MA's), (46, 40551), (60, 40629), (61, 40641),

Gene: Shotgun_63 Start: 40340, Stop: 40495, Start Num: 37
Candidate Starts for Shotgun_63:
(Start: 36 @40337 has 2 MA's), (Start: 37 @40340 has 97 MA's), (57, 40412),

Gene: Shrubaron_17 Start: 6959, Stop: 7108, Start Num: 44
Candidate Starts for Shrubaron_17:
(24, 6836), (26, 6839), (30, 6875), (Start: 44 @6959 has 5 MA's), (46, 6965), (50, 6992), (57, 7025),
(64, 7082),

Gene: SirBeanington_65 Start: 40102, Stop: 40284, Start Num: 37
Candidate Starts for SirBeanington_65:
(Start: 37 @40102 has 97 MA's), (51, 40147), (65, 40237),

Gene: SirFrank_63 Start: 40632, Stop: 40787, Start Num: 37
Candidate Starts for SirFrank_63:
(8, 40359), (23, 40506), (Start: 37 @40632 has 97 MA's), (47, 40650), (50, 40671), (53, 40686), (54,
40689), (57, 40704),

Gene: Skylord_65 Start: 38221, Stop: 38427, Start Num: 37
Candidate Starts for Skylord_65:
(Start: 37 @38221 has 97 MA's), (61, 38329), (64, 38350), (66, 38371), (68, 38413),

Gene: Slay_66 Start: 40377, Stop: 40559, Start Num: 37
Candidate Starts for Slay_66:
(Start: 37 @40377 has 97 MA's), (51, 40422), (65, 40512),

Gene: Softsoap_66 Start: 40066, Stop: 40248, Start Num: 37
Candidate Starts for Softsoap_66:
(Start: 37 @40066 has 97 MA's), (48, 40096), (51, 40111), (65, 40201),

Gene: Solea_67 Start: 40066, Stop: 40248, Start Num: 37
Candidate Starts for Solea_67:
(Start: 37 @40066 has 97 MA's), (65, 40201),

Gene: Sparcetus_48 Start: 30958, Stop: 31104, Start Num: 43
Candidate Starts for Sparcetus_48:
(32, 30889), (42, 30955), (Start: 43 @30958 has 7 MA's), (57, 31024),

Gene: Stoor_62 Start: 39920, Stop: 40105, Start Num: 37
Candidate Starts for Stoor_62:
(Start: 37 @39920 has 97 MA's), (52, 39971), (61, 40031),

Gene: Stromboli_62 Start: 39721, Stop: 39906, Start Num: 37
Candidate Starts for Stromboli_62:
(Start: 37 @39721 has 97 MA's), (46, 39739), (61, 39829), (65, 39856),

Gene: Swervy_65 Start: 39648, Stop: 39830, Start Num: 37
Candidate Starts for Swervy_65:
(Start: 37 @39648 has 97 MA's), (51, 39693), (65, 39783),

Gene: TinyMiny_48 Start: 30979, Stop: 31125, Start Num: 43
Candidate Starts for TinyMiny_48:
(32, 30910), (42, 30976), (Start: 43 @30979 has 7 MA's), (57, 31045),

Gene: Tinyman4_3 Start: 1952, Stop: 2107, Start Num: 40
Candidate Starts for Tinyman4_3:
(Start: 40 @1952 has 23 MA's), (57, 2018),

Gene: TukTuk_66 Start: 40156, Stop: 40338, Start Num: 37
Candidate Starts for TukTuk_66:
(Start: 34 @40144 has 1 MA's), (Start: 37 @40156 has 97 MA's), (51, 40201), (65, 40291),

Gene: Tyrumbra_15 Start: 6388, Stop: 6537, Start Num: 44
Candidate Starts for Tyrumbra_15:
(24, 6265), (26, 6268), (28, 6283), (30, 6304), (Start: 44 @6388 has 5 MA's), (46, 6394), (57, 6454),
(64, 6511),

Gene: Vitas_65 Start: 38277, Stop: 38483, Start Num: 37
Candidate Starts for Vitas_65:
(Start: 37 @38277 has 97 MA's), (61, 38385), (64, 38406), (66, 38427), (68, 38469),

Gene: WalkingDead_65 Start: 40899, Stop: 41084, Start Num: 37
Candidate Starts for WalkingDead_65:
(Start: 37 @40899 has 97 MA's), (46, 40917), (61, 41007), (65, 41034),

Gene: Wardwill_3 Start: 1963, Stop: 2109, Start Num: 40
Candidate Starts for Wardwill_3:
(Start: 40 @1963 has 23 MA's), (57, 2029),

Gene: Yeti_65 Start: 40378, Stop: 40533, Start Num: 37
Candidate Starts for Yeti_65:
(Start: 36 @40375 has 2 MA's), (Start: 37 @40378 has 97 MA's), (57, 40450),

Gene: Zayuliv_3 Start: 1963, Stop: 2109, Start Num: 40
Candidate Starts for Zayuliv_3:
(Start: 40 @1963 has 23 MA's), (57, 2029),

Gene: Zepp_3 Start: 1963, Stop: 2109, Start Num: 40
Candidate Starts for Zepp_3:
(Start: 40 @1963 has 23 MA's), (47, 1975), (57, 2029),