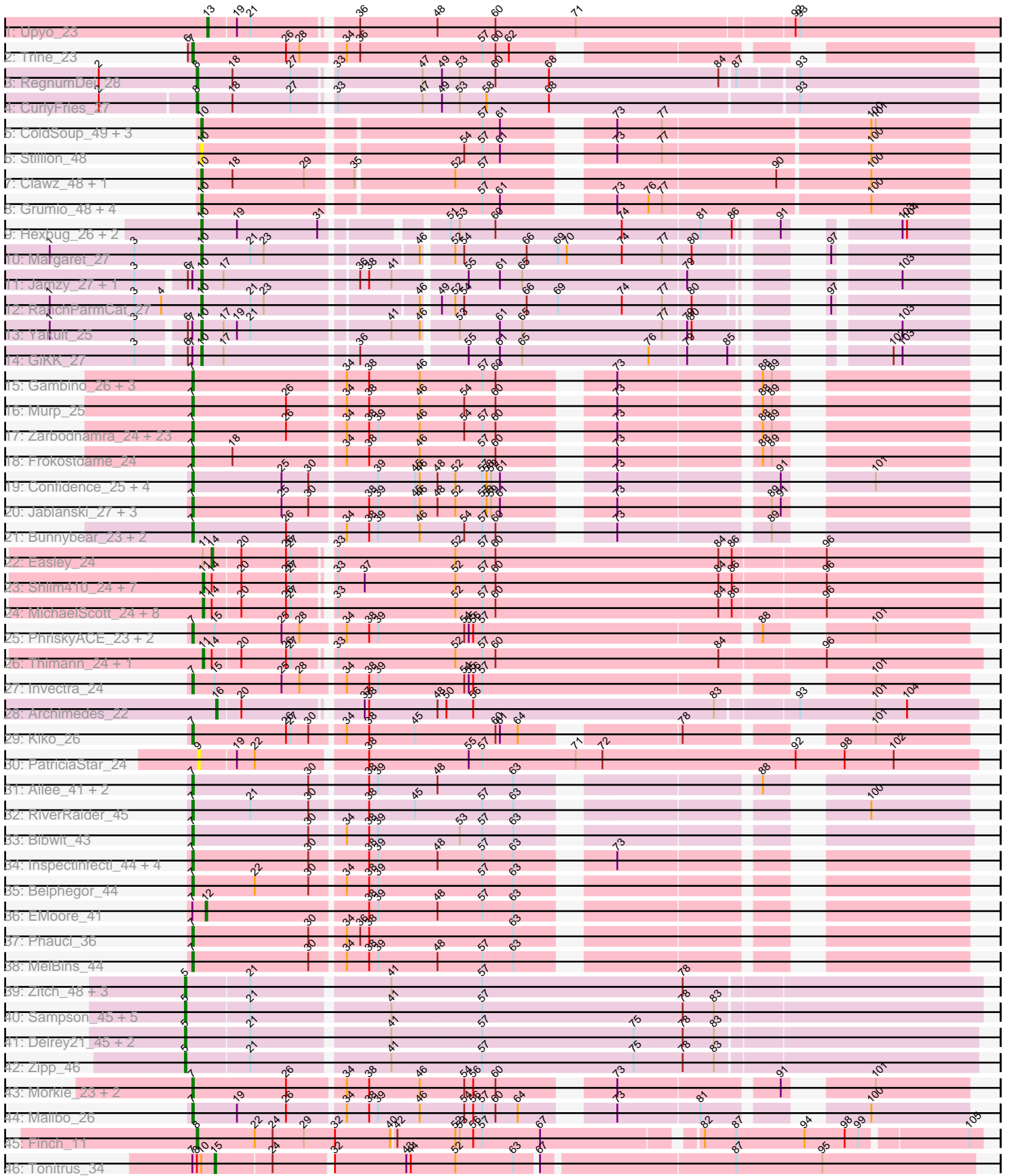


Pham 301139



Note: Tracks are now grouped by subcluster and scaled. Switching in subcluster is indicated by changes in track color. Track scale is now set by default to display the region 30 bp upstream of start 1 to 30 bp downstream of the last possible start. If this default region is judged to be packed too tightly with annotated starts, the track will be further scaled to only show that region of the ORF with annotated starts. This action will be indicated by adding "Zoomed" to the title. For starts, yellow indicates the location of called starts comprised solely of Glimmer/GeneMark auto-annotations, green indicates the location of called starts with at least 1 manual gene annotation.

Pham 301139 Report

This analysis was run 06/08/26 on database version 649.

Pham number 301139 has 128 members, 13 are drafts.

Phages represented in each track:

- Track 1 : Upyo_23
- Track 2 : Trine_23
- Track 3 : RegnumDei_28
- Track 4 : CurlyFries_27
- Track 5 : ColdSoup_49, Jollymon_48, Purplicious_47, Amo99_49
- Track 6 : Stillion_48
- Track 7 : Clawz_48, Makar_49
- Track 8 : Grumio_48, Sting_47, DonTron_48, Soos_44, KingstonB_49
- Track 9 : Hexbug_26, Nodigi_26, Orla_26
- Track 10 : Margaret_27
- Track 11 : Jamzy_27, Button_25
- Track 12 : RanchParmCat_27
- Track 13 : Yakult_25
- Track 14 : GiKK_27
- Track 15 : Gambino_26, Blueberry_26, MissRona_26, Azula_26
- Track 16 : Murp_25
- Track 17 : Zarbodnamra_24, Malachai_25, Jalammah_26, Wisp_23, Mellie_23, UmaThurman_24, JasperJr_24, PhrostedPhlake_26, Zilla_24, Archis_25, Samba_24, BlingBling_24, Utz_24, Begonia_25, Guacamole_24, Lysidious_25, CaptainKirk2_24, Delian_24, Fenry_23, Melba_24, Hitter_24, Barco_24, MintFen_24, Walrus_26
- Track 18 : Frokostdame_24
- Track 19 : Confidence_25, Cashline_25, BeeGee_25, ODay_31, Denise_21
- Track 20 : Jablanski_27, Posh_27, Pytheas_27, Wrigley_27
- Track 21 : Bunnybear_23, Pipp_24, CheeseSpider_28
- Track 22 : Easley_24
- Track 23 : Shlim410_24, Sekhmet_24, Adora_24, Annalisa_24, Hortense_24, Twinkle_24, Howe_24, Beenie_24
- Track 24 : MichaelScott_24, Dolores_24, Rizz_27, DobbysSock_23, WinkNick_24, Samman98_24, Oregano_24, Mcklovin_24, Clark_24
- Track 25 : PhriskyACE_23, Tuti_24, Dorito_23
- Track 26 : Thimann_24, Suerte_22
- Track 27 : Invectra_24
- Track 28 : Archimedes_22
- Track 29 : Kiko_26
- Track 30 : PatriciaStar_24
- Track 31 : Ailee_41, Keitabear_44, Sedona_44
- Track 32 : RiverRaider_45

- Track 33 : Bibwit_43
- Track 34 : Inspectinfecti_44, Phinally_43, Leonard_43, Hans_45, Ali17_41
- Track 35 : Belphegor_44
- Track 36 : EMOore_41
- Track 37 : Phauci_36
- Track 38 : MelBins_44
- Track 39 : Zitch_48, APunk_46, Pumpkiney_46, BigHunkinEater_48
- Track 40 : Sampson_45, Scioto_46, ViaConlectus_45, Abblin_45, Tardus_46, Natkenzie_45
- Track 41 : Delrey21_45, DoctorFroggo_45, Verity_45
- Track 42 : Zipp_46
- Track 43 : Morkie_23, PhorbessPhlower_23, InLimbo_24
- Track 44 : Malibo_26
- Track 45 : Finch_11
- Track 46 : Tonitrus_34

Summary of Final Annotations (See graph section above for start numbers):

The start number called the most often in the published annotations is 7, it was called in 62 of the 115 non-draft genes in the pham.

Genes that call this "Most Annotated" start:

- Ailee_41, Ali17_41, Archis_25, Azula_26, Barco_24, BeeGee_25, Begonia_25, Belphegor_44, Bibwit_43, BlingBling_24, Blueberry_26, Bunnybear_23, CaptainKirk2_24, Cashline_25, CheeseSpider_28, Confidence_25, Delian_24, Denise_21, Dorito_23, Fenry_23, Frokostdame_24, Gambino_26, Guacamole_24, Hans_45, Hitter_24, InLimbo_24, Inspectinfecti_44, Invectra_24, Jablanski_27, Jalammah_26, JasperJr_24, Keitabear_44, Kiko_26, Leonard_43, Lysidious_25, Malachai_25, Malibo_26, MelBins_44, Melba_24, Mellie_23, MintFen_24, MissRona_26, Morkie_23, Murp_25, ODay_31, Phauci_36, Phinally_43, PhorbessPhlower_23, PhriskyACE_23, PhrostedPhlake_26, Pipp_24, Posh_27, Pytheas_27, RiverRaider_45, Samba_24, Sedona_44, Trine_23, Tuti_24, UmaThurman_24, Utz_24, Walrus_26, Wisp_23, Wrigley_27, Zarbodnamra_24, Zilla_24,

Genes that have the "Most Annotated" start but do not call it:

- Button_25, EMOore_41, GiKK_27, Jamzy_27, Tonitrus_34, Yakult_25,

Genes that do not have the "Most Annotated" start:

- APunk_46, Abblin_45, Adora_24, Amo99_49, Annalisa_24, Archimedes_22, Beenie_24, BigHunkinEater_48, Clark_24, Clawz_48, ColdSoup_49, CurlyFries_27, Delrey21_45, DobbysSock_23, DoctorFroggo_45, Dolores_24, DonTron_48, Easley_24, Finch_11, Grumio_48, Hexbug_26, Hortense_24, Howe_24, Jollymon_48, KingstonB_49, Makar_49, Margaret_27, Mcklovin_24, MichaelScott_24, Natkenzie_45, Nodigi_26, Oregano_24, Orla_26, PatriciaStar_24, Pumpkiney_46, Purplicious_47, RanchParmCat_27, RegnumDei_28, Rizz_27, Samman98_24, Sampson_45, Scioto_46, Sekhmet_24, Shlim410_24, Soos_44, Stillion_48, Sting_47, Suerte_22, Tardus_46, Thimann_24, Twinkle_24, Upyo_23, Verity_45, ViaConlectus_45, WinkNick_24, Zipp_46, Zitch_48,

Summary by start number:

Start 5:

- Found in 14 of 128 (10.9%) of genes in pham
- Manual Annotations of this start: 13 of 115
- Called 100.0% of time when present
- Phage (with cluster) where this start called: APunk_46 (DE4), Abblin_45 (DE4), BigHunkinEater_48 (DE4), Delrey21_45 (DE4), DoctorFroggo_45 (DE4), Natkenzie_45 (DE4), Pumpkiney_46 (DE4), Sampson_45 (DE4), Scioto_46 (DE4), Tardus_46 (DE4), Verity_45 (DE4), ViaConlectus_45 (DE4), Zipp_46 (DE4), Zitch_48 (DE4),

Start 7:

- Found in 71 of 128 (55.5%) of genes in pham
- Manual Annotations of this start: 62 of 115
- Called 91.5% of time when present
- Phage (with cluster) where this start called: Ailee_41 (DE1), Ali17_41 (DE2), Archis_25 (CV), Azula_26 (CV), Barco_24 (CV), BeeGee_25 (CY5), Begonia_25 (CV), Belphegor_44 (DE2), Bibwit_43 (DE1), BlingBling_24 (CV), Blueberry_26 (CV), Bunnybear_23 (CZ), CaptainKirk2_24 (CV), Cashline_25 (CY6), CheeseSpider_28 (CV), Confidence_25 (CY1), Delian_24 (CV), Denise_21 (CZ5), Dorito_23 (CZ4), Ferry_23 (CV), Frokostdame_24 (CV), Gambino_26 (CV), Guacamole_24 (CV), Hans_45 (DE2), Hitter_24 (CV), InLimbo_24 (DH), Inspectinfecti_44 (DE2), Invectra_24 (CZ4), Jablanski_27 (CY3), Jalammah_26 (CV), JasperJr_24 (CV), Keitabear_44 (DE1), Kiko_26 (DB), Leonard_43 (DE2), Lysidious_25 (CV), Malachai_25 (CV), Malibo_26 (DW), MelBins_44 (DE2), Melba_24 (CV), Mellie_23 (CV), MintFen_24 (CV), MissRona_26 (CV), Morkie_23 (DH), Murp_25 (CV), ODay_31 (DN), Phauci_36 (DE2), Phinally_43 (DE2), PhorbesPhlower_23 (DH), PhriskyACE_23 (CZ4), PhrostedPhlake_26 (CV), Pipp_24 (CV), Posh_27 (CY4), Pytheas_27 (CY3), RiverRaider_45 (DE1), Samba_24 (CV), Sedona_44 (DE1), Trine_23 (CD), Tuti_24 (CZ4), UmaThurman_24 (CV), Utz_24 (CV), Walrus_26 (CV), Wisp_23 (CV), Wrigley_27 (CY4), Zarbodnamra_24 (CV), Zilla_24 (CV),

Start 8:

- Found in 4 of 128 (3.1%) of genes in pham
- Manual Annotations of this start: 3 of 115
- Called 75.0% of time when present
- Phage (with cluster) where this start called: CurlyFries_27 (CF), Finch_11 (singleton), RegnumDei_28 (CF),

Start 9:

- Found in 1 of 128 (0.8%) of genes in pham
- No Manual Annotations of this start.
- Called 100.0% of time when present
- Phage (with cluster) where this start called: PatriciaStar_24 (DB),

Start 10:

- Found in 22 of 128 (17.2%) of genes in pham
- Manual Annotations of this start: 14 of 115
- Called 95.5% of time when present
- Phage (with cluster) where this start called: Amo99_49 (CP), Button_25 (CT), Clawz_48 (CP), ColdSoup_49 (CP), DonTron_48 (CP), GiKK_27 (CT), Grumio_48 (CP), Hexbug_26 (CT), Jamzy_27 (CT), Jollymon_48 (CP), KingstonB_49 (CP),

Makar_49 (CP), Margaret_27 (CT), Nodigi_26 (CT), Orla_26 (CT), Purplicious_47 (CP), RanchParmCat_27 (CT), Soos_44 (CP), Stillion_48 (CP), Sting_47 (CP), Yakult_25 (CT),

Start 11:

- Found in 20 of 128 (15.6%) of genes in pham
- Manual Annotations of this start: 18 of 115
- Called 95.0% of time when present
- Phage (with cluster) where this start called: Adora_24 (CZ4), Annalisa_24 (CZ4), Beenie_24 (CZ4), Clark_24 (CZ4), DobbysSock_23 (CZ4), Dolores_24 (CZ4), Hortense_24 (CZ4), Howe_24 (CZ4), Mcklovin_24 (CZ4), MichaelScott_24 (CZ4), Oregano_24 (CZ4), Rizz_27 (CZ4), Samman98_24 (CZ4), Sekhmet_24 (CZ4), Shlim410_24 (CZ4), Suerte_22 (CZ4), Thimann_24 (CZ4), Twinkle_24 (CZ4), WinkNick_24 (CZ4),

Start 12:

- Found in 1 of 128 (0.8%) of genes in pham
- Manual Annotations of this start: 1 of 115
- Called 100.0% of time when present
- Phage (with cluster) where this start called: EMoore_41 (DE2),

Start 13:

- Found in 1 of 128 (0.8%) of genes in pham
- Manual Annotations of this start: 1 of 115
- Called 100.0% of time when present
- Phage (with cluster) where this start called: Upyo_23 (CD),

Start 14:

- Found in 20 of 128 (15.6%) of genes in pham
- Manual Annotations of this start: 1 of 115
- Called 5.0% of time when present
- Phage (with cluster) where this start called: Easley_24 (CZ4),

Start 15:

- Found in 5 of 128 (3.9%) of genes in pham
- Manual Annotations of this start: 1 of 115
- Called 20.0% of time when present
- Phage (with cluster) where this start called: Tonitrus_34 (singleton),

Start 16:

- Found in 1 of 128 (0.8%) of genes in pham
- Manual Annotations of this start: 1 of 115
- Called 100.0% of time when present
- Phage (with cluster) where this start called: Archimedes_22 (DA),

Summary by clusters:

There are 22 clusters represented in this pham: DN, singleton, DH, DB, CZ4, DA, DW, CZ5, CY3, CY1, CY6, CY5, CY4, CF, CD, CZ, CP, CV, CT, DE1, DE2, DE4,

Info for manual annotations of cluster CD:

- Start number 7 was manually annotated 1 time for cluster CD.
- Start number 13 was manually annotated 1 time for cluster CD.

Info for manual annotations of cluster CF:

- Start number 8 was manually annotated 2 times for cluster CF.

Info for manual annotations of cluster CP:

- Start number 10 was manually annotated 5 times for cluster CP.

Info for manual annotations of cluster CT:

- Start number 10 was manually annotated 9 times for cluster CT.

Info for manual annotations of cluster CV:

- Start number 7 was manually annotated 30 times for cluster CV.

Info for manual annotations of cluster CY1:

- Start number 7 was manually annotated 1 time for cluster CY1.

Info for manual annotations of cluster CY3:

- Start number 7 was manually annotated 2 times for cluster CY3.

Info for manual annotations of cluster CY4:

- Start number 7 was manually annotated 2 times for cluster CY4.

Info for manual annotations of cluster CY5:

- Start number 7 was manually annotated 1 time for cluster CY5.

Info for manual annotations of cluster CY6:

- Start number 7 was manually annotated 1 time for cluster CY6.

Info for manual annotations of cluster CZ:

- Start number 7 was manually annotated 1 time for cluster CZ.

Info for manual annotations of cluster CZ4:

- Start number 7 was manually annotated 4 times for cluster CZ4.
- Start number 11 was manually annotated 18 times for cluster CZ4.
- Start number 14 was manually annotated 1 time for cluster CZ4.

Info for manual annotations of cluster CZ5:

- Start number 7 was manually annotated 1 time for cluster CZ5.

Info for manual annotations of cluster DA:

- Start number 16 was manually annotated 1 time for cluster DA.

Info for manual annotations of cluster DB:

- Start number 7 was manually annotated 1 time for cluster DB.

Info for manual annotations of cluster DE1:

- Start number 7 was manually annotated 5 times for cluster DE1.

Info for manual annotations of cluster DE2:

- Start number 7 was manually annotated 8 times for cluster DE2.
- Start number 12 was manually annotated 1 time for cluster DE2.

Info for manual annotations of cluster DE4:

•Start number 5 was manually annotated 13 times for cluster DE4.

Info for manual annotations of cluster DH:

•Start number 7 was manually annotated 2 times for cluster DH.

Info for manual annotations of cluster DN:

•Start number 7 was manually annotated 1 time for cluster DN.

Info for manual annotations of cluster DW:

•Start number 7 was manually annotated 1 time for cluster DW.

Gene Information:

Gene: APunk_46 Start: 39623, Stop: 40141, Start Num: 5

Candidate Starts for APunk_46:

(Start: 5 @39623 has 13 MA's), (21, 39665), (41, 39752), (57, 39812), (78, 39947),

Gene: Abblin_45 Start: 40160, Stop: 40678, Start Num: 5

Candidate Starts for Abblin_45:

(Start: 5 @40160 has 13 MA's), (21, 40202), (41, 40289), (57, 40349), (78, 40484), (83, 40505),

Gene: Adora_24 Start: 21281, Stop: 21787, Start Num: 11

Candidate Starts for Adora_24:

(Start: 11 @21281 has 18 MA's), (Start: 14 @21287 has 1 MA's), (20, 21305), (26, 21335), (27, 21338), (33, 21359), (37, 21377), (52, 21437), (57, 21455), (60, 21464), (84, 21614), (86, 21623), (96, 21683),

Gene: Ailee_41 Start: 38585, Stop: 39043, Start Num: 7

Candidate Starts for Ailee_41:

(Start: 7 @38585 has 62 MA's), (30, 38663), (38, 38699), (39, 38705), (48, 38744), (63, 38795), (88, 38930),

Gene: Ali17_41 Start: 37879, Stop: 38337, Start Num: 7

Candidate Starts for Ali17_41:

(Start: 7 @37879 has 62 MA's), (30, 37957), (38, 37993), (39, 37999), (48, 38038), (57, 38068), (63, 38089), (73, 38137),

Gene: Amo99_49 Start: 26503, Stop: 26979, Start Num: 10

Candidate Starts for Amo99_49:

(Start: 10 @26503 has 14 MA's), (57, 26680), (61, 26692), (73, 26749), (77, 26779), (100, 26914), (101, 26917),

Gene: Annalisa_24 Start: 20743, Stop: 21249, Start Num: 11

Candidate Starts for Annalisa_24:

(Start: 11 @20743 has 18 MA's), (Start: 14 @20749 has 1 MA's), (20, 20767), (26, 20797), (27, 20800), (33, 20821), (37, 20839), (52, 20899), (57, 20917), (60, 20926), (84, 21076), (86, 21085), (96, 21145),

Gene: Archimedes_22 Start: 19353, Stop: 19844, Start Num: 16

Candidate Starts for Archimedes_22:

(Start: 16 @19353 has 1 MA's), (20, 19368), (37, 19440), (38, 19443), (48, 19488), (50, 19494), (56, 19512), (83, 19674), (93, 19725), (101, 19776), (104, 19797),

Gene: Archis_25 Start: 20911, Stop: 21369, Start Num: 7

Candidate Starts for Archis_25:

(Start: 7 @20911 has 62 MA's), (26, 20974), (34, 21010), (38, 21025), (39, 21031), (46, 21058), (54, 21088), (57, 21100), (60, 21109), (73, 21169), (88, 21256), (89, 21262),

Gene: Azula_26 Start: 21012, Stop: 21470, Start Num: 7

Candidate Starts for Azula_26:

(Start: 7 @21012 has 62 MA's), (34, 21111), (38, 21126), (46, 21159), (57, 21201), (60, 21210), (73, 21270), (88, 21357), (89, 21363),

Gene: Barco_24 Start: 20700, Stop: 21158, Start Num: 7

Candidate Starts for Barco_24:

(Start: 7 @20700 has 62 MA's), (26, 20763), (34, 20799), (38, 20814), (39, 20820), (46, 20847), (54, 20877), (57, 20889), (60, 20898), (73, 20958), (88, 21045), (89, 21051),

Gene: BeeGee_25 Start: 21331, Stop: 21789, Start Num: 7

Candidate Starts for BeeGee_25:

(Start: 7 @21331 has 62 MA's), (25, 21391), (30, 21409), (39, 21451), (45, 21475), (46, 21478), (48, 21490), (52, 21502), (57, 21520), (58, 21523), (59, 21526), (61, 21532), (73, 21589), (91, 21688), (101, 21727),

Gene: Beenie_24 Start: 21100, Stop: 21606, Start Num: 11

Candidate Starts for Beenie_24:

(Start: 11 @21100 has 18 MA's), (Start: 14 @21106 has 1 MA's), (20, 21124), (26, 21154), (27, 21157), (33, 21178), (37, 21196), (52, 21256), (57, 21274), (60, 21283), (84, 21433), (86, 21442), (96, 21502),

Gene: Begonia_25 Start: 21181, Stop: 21639, Start Num: 7

Candidate Starts for Begonia_25:

(Start: 7 @21181 has 62 MA's), (26, 21244), (34, 21280), (38, 21295), (39, 21301), (46, 21328), (54, 21358), (57, 21370), (60, 21379), (73, 21439), (88, 21526), (89, 21532),

Gene: Belphegor_44 Start: 39930, Stop: 40388, Start Num: 7

Candidate Starts for Belphegor_44:

(Start: 7 @39930 has 62 MA's), (22, 39972), (30, 40008), (34, 40029), (38, 40044), (39, 40050), (57, 40119), (63, 40140),

Gene: Bibwit_43 Start: 38519, Stop: 38980, Start Num: 7

Candidate Starts for Bibwit_43:

(Start: 7 @38519 has 62 MA's), (30, 38597), (34, 38618), (38, 38633), (39, 38639), (53, 38693), (57, 38708), (63, 38729),

Gene: BigHunkinEater_48 Start: 39401, Stop: 39919, Start Num: 5

Candidate Starts for BigHunkinEater_48:

(Start: 5 @39401 has 13 MA's), (21, 39443), (41, 39530), (57, 39590), (78, 39725),

Gene: BlingBling_24 Start: 20700, Stop: 21158, Start Num: 7

Candidate Starts for BlingBling_24:

(Start: 7 @20700 has 62 MA's), (26, 20763), (34, 20799), (38, 20814), (39, 20820), (46, 20847), (54, 20877), (57, 20889), (60, 20898), (73, 20958), (88, 21045), (89, 21051),

Gene: Blueberry_26 Start: 21012, Stop: 21470, Start Num: 7

Candidate Starts for Blueberry_26:

(Start: 7 @21012 has 62 MA's), (34, 21111), (38, 21126), (46, 21159), (57, 21201), (60, 21210), (73, 21270), (88, 21357), (89, 21363),

Gene: Bunnybear_23 Start: 21777, Stop: 22235, Start Num: 7

Candidate Starts for Bunnybear_23:

(Start: 7 @21777 has 62 MA's), (26, 21840), (34, 21876), (38, 21891), (39, 21897), (46, 21924), (54, 21954), (57, 21966), (60, 21975), (73, 22035), (89, 22128),

Gene: Button_25 Start: 19038, Stop: 19490, Start Num: 10

Candidate Starts for Button_25:

(3, 18999), (6, 19029), (Start: 7 @19032 has 62 MA's), (Start: 10 @19038 has 14 MA's), (17, 19053), (36, 19137), (38, 19143), (41, 19158), (55, 19203), (61, 19224), (65, 19239), (79, 19347), (103, 19446),

Gene: CaptainKirk2_24 Start: 20721, Stop: 21179, Start Num: 7

Candidate Starts for CaptainKirk2_24:

(Start: 7 @20721 has 62 MA's), (26, 20784), (34, 20820), (38, 20835), (39, 20841), (46, 20868), (54, 20898), (57, 20910), (60, 20919), (73, 20979), (88, 21066), (89, 21072),

Gene: Cashline_25 Start: 21198, Stop: 21656, Start Num: 7

Candidate Starts for Cashline_25:

(Start: 7 @21198 has 62 MA's), (25, 21258), (30, 21276), (39, 21318), (45, 21342), (46, 21345), (48, 21357), (52, 21369), (57, 21387), (58, 21390), (59, 21393), (61, 21399), (73, 21456), (91, 21555), (101, 21594),

Gene: CheeseSpider_28 Start: 21266, Stop: 21724, Start Num: 7

Candidate Starts for CheeseSpider_28:

(Start: 7 @21266 has 62 MA's), (26, 21329), (34, 21365), (38, 21380), (39, 21386), (46, 21413), (54, 21443), (57, 21455), (60, 21464), (73, 21524), (89, 21617),

Gene: Clark_24 Start: 20743, Stop: 21249, Start Num: 11

Candidate Starts for Clark_24:

(Start: 11 @20743 has 18 MA's), (Start: 14 @20749 has 1 MA's), (20, 20767), (26, 20797), (27, 20800), (33, 20821), (52, 20899), (57, 20917), (60, 20926), (84, 21076), (86, 21085), (96, 21145),

Gene: Clawz_48 Start: 26409, Stop: 26885, Start Num: 10

Candidate Starts for Clawz_48:

(Start: 10 @26409 has 14 MA's), (18, 26430), (29, 26478), (35, 26505), (52, 26568), (57, 26586), (90, 26760), (100, 26820),

Gene: ColdSoup_49 Start: 26503, Stop: 26979, Start Num: 10

Candidate Starts for ColdSoup_49:

(Start: 10 @26503 has 14 MA's), (57, 26680), (61, 26692), (73, 26749), (77, 26779), (100, 26914), (101, 26917),

Gene: Confidence_25 Start: 21361, Stop: 21819, Start Num: 7

Candidate Starts for Confidence_25:

(Start: 7 @21361 has 62 MA's), (25, 21421), (30, 21439), (39, 21481), (45, 21505), (46, 21508), (48, 21520), (52, 21532), (57, 21550), (58, 21553), (59, 21556), (61, 21562), (73, 21619), (91, 21718), (101, 21757),

Gene: CurlyFries_27 Start: 25600, Stop: 26106, Start Num: 8

Candidate Starts for CurlyFries_27:

(2, 25537), (Start: 8 @25600 has 3 MA's), (18, 25624), (27, 25663), (33, 25684), (47, 25741), (49, 25753), (53, 25765), (58, 25783), (68, 25825), (93, 25987),

Gene: Delian_24 Start: 20721, Stop: 21179, Start Num: 7

Candidate Starts for Delian_24:

(Start: 7 @20721 has 62 MA's), (26, 20784), (34, 20820), (38, 20835), (39, 20841), (46, 20868), (54, 20898), (57, 20910), (60, 20919), (73, 20979), (88, 21066), (89, 21072),

Gene: Delrey21_45 Start: 40925, Stop: 41440, Start Num: 5

Candidate Starts for Delrey21_45:

(Start: 5 @40925 has 13 MA's), (21, 40967), (41, 41054), (57, 41114), (75, 41216), (78, 41249), (83, 41270),

Gene: Denise_21 Start: 18426, Stop: 18884, Start Num: 7

Candidate Starts for Denise_21:

(Start: 7 @18426 has 62 MA's), (25, 18486), (30, 18504), (39, 18546), (45, 18570), (46, 18573), (48, 18585), (52, 18597), (57, 18615), (58, 18618), (59, 18621), (61, 18627), (73, 18684), (91, 18783), (101, 18822),

Gene: DobbysSock_23 Start: 20217, Stop: 20723, Start Num: 11

Candidate Starts for DobbysSock_23:

(Start: 11 @20217 has 18 MA's), (Start: 14 @20223 has 1 MA's), (20, 20241), (26, 20271), (27, 20274), (33, 20295), (52, 20373), (57, 20391), (60, 20400), (84, 20550), (86, 20559), (96, 20619),

Gene: DoctorFroggo_45 Start: 40925, Stop: 41440, Start Num: 5

Candidate Starts for DoctorFroggo_45:

(Start: 5 @40925 has 13 MA's), (21, 40967), (41, 41054), (57, 41114), (75, 41216), (78, 41249), (83, 41270),

Gene: Dolores_24 Start: 20719, Stop: 21225, Start Num: 11

Candidate Starts for Dolores_24:

(Start: 11 @20719 has 18 MA's), (Start: 14 @20725 has 1 MA's), (20, 20743), (26, 20773), (27, 20776), (33, 20797), (52, 20875), (57, 20893), (60, 20902), (84, 21052), (86, 21061), (96, 21121),

Gene: DonTron_48 Start: 26543, Stop: 27019, Start Num: 10

Candidate Starts for DonTron_48:

(Start: 10 @26543 has 14 MA's), (57, 26720), (61, 26732), (73, 26789), (76, 26810), (77, 26819), (100, 26954),

Gene: Dorito_23 Start: 20203, Stop: 20682, Start Num: 7

Candidate Starts for Dorito_23:

(Start: 7 @20203 has 62 MA's), (Start: 15 @20218 has 1 MA's), (25, 20263), (28, 20275), (34, 20302), (38, 20317), (39, 20323), (54, 20380), (55, 20383), (56, 20386), (57, 20392), (88, 20569), (101, 20620),

Gene: EMoore_41 Start: 39068, Stop: 39517, Start Num: 12

Candidate Starts for EMoore_41:

(Start: 7 @39059 has 62 MA's), (Start: 12 @39068 has 1 MA's), (38, 39173), (39, 39179), (48, 39218), (57, 39248), (63, 39269),

Gene: Easley_24 Start: 20735, Stop: 21235, Start Num: 14

Candidate Starts for Easley_24:

(Start: 11 @20729 has 18 MA's), (Start: 14 @20735 has 1 MA's), (20, 20753), (26, 20783), (27, 20786), (33, 20807), (52, 20885), (57, 20903), (60, 20912), (84, 21062), (86, 21071), (96, 21131),

Gene: Fenry_23 Start: 20419, Stop: 20877, Start Num: 7

Candidate Starts for Fenry_23:

(Start: 7 @20419 has 62 MA's), (26, 20482), (34, 20518), (38, 20533), (39, 20539), (46, 20566), (54, 20596), (57, 20608), (60, 20617), (73, 20677), (88, 20764), (89, 20770),

Gene: Finch_11 Start: 5519, Stop: 6019, Start Num: 8

Candidate Starts for Finch_11:

(Start: 8 @5519 has 3 MA's), (22, 5558), (24, 5570), (29, 5591), (32, 5612), (40, 5648), (42, 5651), (52, 5690), (53, 5693), (56, 5702), (57, 5708), (67, 5747), (82, 5843), (87, 5864), (94, 5909), (98, 5936), (99, 5945), (105, 6011),

Gene: Frokostdame_24 Start: 20666, Stop: 21124, Start Num: 7

Candidate Starts for Frokostdame_24:

(Start: 7 @20666 has 62 MA's), (18, 20693), (34, 20765), (38, 20780), (46, 20813), (57, 20855), (60, 20864), (73, 20924), (88, 21011), (89, 21017),

Gene: Gambino_26 Start: 21012, Stop: 21470, Start Num: 7

Candidate Starts for Gambino_26:

(Start: 7 @21012 has 62 MA's), (34, 21111), (38, 21126), (46, 21159), (57, 21201), (60, 21210), (73, 21270), (88, 21357), (89, 21363),

Gene: GiKK_27 Start: 19337, Stop: 19789, Start Num: 10

Candidate Starts for GiKK_27:

(3, 19298), (6, 19328), (Start: 7 @19331 has 62 MA's), (Start: 10 @19337 has 14 MA's), (17, 19352), (36, 19436), (55, 19502), (61, 19523), (65, 19538), (76, 19622), (79, 19646), (85, 19673), (102, 19739), (103, 19745),

Gene: Grumio_48 Start: 25981, Stop: 26457, Start Num: 10

Candidate Starts for Grumio_48:

(Start: 10 @25981 has 14 MA's), (57, 26158), (61, 26170), (73, 26227), (76, 26248), (77, 26257), (100, 26392),

Gene: Guacamole_24 Start: 20704, Stop: 21162, Start Num: 7

Candidate Starts for Guacamole_24:

(Start: 7 @20704 has 62 MA's), (26, 20767), (34, 20803), (38, 20818), (39, 20824), (46, 20851), (54, 20881), (57, 20893), (60, 20902), (73, 20962), (88, 21049), (89, 21055),

Gene: Hans_45 Start: 38519, Stop: 38977, Start Num: 7

Candidate Starts for Hans_45:

(Start: 7 @38519 has 62 MA's), (30, 38597), (38, 38633), (39, 38639), (48, 38678), (57, 38708), (63, 38729), (73, 38777),

Gene: Hexbug_26 Start: 20025, Stop: 20471, Start Num: 10

Candidate Starts for Hexbug_26:

(Start: 10 @20025 has 14 MA's), (19, 20049), (31, 20103), (51, 20172), (53, 20178), (60, 20202), (74, 20286), (81, 20337), (86, 20358), (91, 20379), (103, 20427), (104, 20430),

Gene: Hitter_24 Start: 20700, Stop: 21158, Start Num: 7

Candidate Starts for Hitter_24:

(Start: 7 @20700 has 62 MA's), (26, 20763), (34, 20799), (38, 20814), (39, 20820), (46, 20847), (54, 20877), (57, 20889), (60, 20898), (73, 20958), (88, 21045), (89, 21051),

Gene: Hortense_24 Start: 21328, Stop: 21834, Start Num: 11

Candidate Starts for Hortense_24:

(Start: 11 @21328 has 18 MA's), (Start: 14 @21334 has 1 MA's), (20, 21352), (26, 21382), (27, 21385), (33, 21406), (37, 21424), (52, 21484), (57, 21502), (60, 21511), (84, 21661), (86, 21670), (96, 21730),

Gene: Howe_24 Start: 21328, Stop: 21834, Start Num: 11

Candidate Starts for Howe_24:

(Start: 11 @21328 has 18 MA's), (Start: 14 @21334 has 1 MA's), (20, 21352), (26, 21382), (27, 21385), (33, 21406), (37, 21424), (52, 21484), (57, 21502), (60, 21511), (84, 21661), (86, 21670), (96, 21730),

Gene: InLimbo_24 Start: 18982, Stop: 19440, Start Num: 7

Candidate Starts for InLimbo_24:

(Start: 7 @18982 has 62 MA's), (26, 19045), (34, 19081), (38, 19096), (46, 19129), (54, 19159), (56, 19165), (60, 19180), (73, 19240), (91, 19339), (101, 19378),

Gene: Inspectinfecti_44 Start: 38965, Stop: 39423, Start Num: 7

Candidate Starts for Inspectinfecti_44:

(Start: 7 @38965 has 62 MA's), (30, 39043), (38, 39079), (39, 39085), (48, 39124), (57, 39154), (63, 39175), (73, 39223),

Gene: Invectra_24 Start: 21068, Stop: 21547, Start Num: 7

Candidate Starts for Invectra_24:

(Start: 7 @21068 has 62 MA's), (Start: 15 @21083 has 1 MA's), (25, 21128), (28, 21140), (34, 21167), (38, 21182), (39, 21188), (54, 21245), (55, 21248), (56, 21251), (57, 21257), (101, 21485),

Gene: Jablanski_27 Start: 22440, Stop: 22898, Start Num: 7

Candidate Starts for Jablanski_27:

(Start: 7 @22440 has 62 MA's), (25, 22500), (30, 22518), (38, 22554), (39, 22560), (45, 22584), (46, 22587), (48, 22599), (52, 22611), (57, 22629), (58, 22632), (59, 22635), (61, 22641), (73, 22698), (89, 22791), (91, 22797),

Gene: Jalammah_26 Start: 21494, Stop: 21952, Start Num: 7

Candidate Starts for Jalammah_26:

(Start: 7 @21494 has 62 MA's), (26, 21557), (34, 21593), (38, 21608), (39, 21614), (46, 21641), (54, 21671), (57, 21683), (60, 21692), (73, 21752), (88, 21839), (89, 21845),

Gene: Jamzy_27 Start: 19351, Stop: 19803, Start Num: 10

Candidate Starts for Jamzy_27:

(3, 19312), (6, 19342), (Start: 7 @19345 has 62 MA's), (Start: 10 @19351 has 14 MA's), (17, 19366), (36, 19450), (38, 19456), (41, 19471), (55, 19516), (61, 19537), (65, 19552), (79, 19660), (103, 19759),

Gene: JasperJr_24 Start: 20704, Stop: 21162, Start Num: 7

Candidate Starts for JasperJr_24:

(Start: 7 @20704 has 62 MA's), (26, 20767), (34, 20803), (38, 20818), (39, 20824), (46, 20851), (54, 20881), (57, 20893), (60, 20902), (73, 20962), (88, 21049), (89, 21055),

Gene: Jollymon_48 Start: 26503, Stop: 26979, Start Num: 10

Candidate Starts for Jollymon_48:

(Start: 10 @26503 has 14 MA's), (57, 26680), (61, 26692), (73, 26749), (77, 26779), (100, 26914), (101, 26917),

Gene: Keitabear_44 Start: 40216, Stop: 40674, Start Num: 7

Candidate Starts for Keitabear_44:

(Start: 7 @40216 has 62 MA's), (30, 40294), (38, 40330), (39, 40336), (48, 40375), (63, 40426), (88, 40561),

Gene: Kiko_26 Start: 20953, Stop: 21411, Start Num: 7

Candidate Starts for Kiko_26:

(Start: 7 @20953 has 62 MA's), (26, 21016), (27, 21019), (30, 21031), (34, 21052), (38, 21067), (45, 21097), (60, 21151), (61, 21154), (64, 21166), (78, 21253), (101, 21349),

Gene: KingstonB_49 Start: 25981, Stop: 26457, Start Num: 10

Candidate Starts for KingstonB_49:

(Start: 10 @25981 has 14 MA's), (57, 26158), (61, 26170), (73, 26227), (76, 26248), (77, 26257), (100, 26392),

Gene: Leonard_43 Start: 38604, Stop: 39062, Start Num: 7

Candidate Starts for Leonard_43:

(Start: 7 @38604 has 62 MA's), (30, 38682), (38, 38718), (39, 38724), (48, 38763), (57, 38793), (63, 38814), (73, 38862),

Gene: Lysidious_25 Start: 21224, Stop: 21682, Start Num: 7

Candidate Starts for Lysidious_25:

(Start: 7 @21224 has 62 MA's), (26, 21287), (34, 21323), (38, 21338), (39, 21344), (46, 21371), (54, 21401), (57, 21413), (60, 21422), (73, 21482), (88, 21569), (89, 21575),

Gene: Makar_49 Start: 26436, Stop: 26912, Start Num: 10

Candidate Starts for Makar_49:

(Start: 10 @26436 has 14 MA's), (18, 26457), (29, 26505), (35, 26532), (52, 26595), (57, 26613), (90, 26787), (100, 26847),

Gene: Malachai_25 Start: 21181, Stop: 21639, Start Num: 7

Candidate Starts for Malachai_25:

(Start: 7 @21181 has 62 MA's), (26, 21244), (34, 21280), (38, 21295), (39, 21301), (46, 21328), (54, 21358), (57, 21370), (60, 21379), (73, 21439), (88, 21526), (89, 21532),

Gene: Malibo_26 Start: 20919, Stop: 21377, Start Num: 7

Candidate Starts for Malibo_26:

(Start: 7 @20919 has 62 MA's), (19, 20949), (26, 20982), (34, 21018), (38, 21033), (39, 21039), (46, 21066), (54, 21096), (56, 21102), (57, 21108), (60, 21117), (64, 21132), (73, 21177), (81, 21231), (100, 21312),

Gene: Margaret_27 Start: 19721, Stop: 20167, Start Num: 10

Candidate Starts for Margaret_27:

(1, 19619), (3, 19676), (Start: 10 @19721 has 14 MA's), (21, 19754), (23, 19763), (46, 19856), (52, 19874), (54, 19880), (66, 19922), (69, 19943), (70, 19949), (74, 19985), (77, 20012), (80, 20030), (97, 20084),

Gene: Mcklovin_24 Start: 23497, Stop: 24003, Start Num: 11

Candidate Starts for Mcklovin_24:

(Start: 11 @23497 has 18 MA's), (Start: 14 @23503 has 1 MA's), (20, 23521), (26, 23551), (27, 23554), (33, 23575), (52, 23653), (57, 23671), (60, 23680), (84, 23830), (86, 23839), (96, 23899),

Gene: MelBins_44 Start: 38751, Stop: 39209, Start Num: 7

Candidate Starts for MelBins_44:

(Start: 7 @38751 has 62 MA's), (30, 38829), (34, 38850), (38, 38865), (39, 38871), (48, 38910), (57, 38940), (63, 38961),

Gene: Melba_24 Start: 20700, Stop: 21158, Start Num: 7

Candidate Starts for Melba_24:

(Start: 7 @20700 has 62 MA's), (26, 20763), (34, 20799), (38, 20814), (39, 20820), (46, 20847), (54, 20877), (57, 20889), (60, 20898), (73, 20958), (88, 21045), (89, 21051),

Gene: Mellie_23 Start: 20461, Stop: 20919, Start Num: 7

Candidate Starts for Mellie_23:

(Start: 7 @20461 has 62 MA's), (26, 20524), (34, 20560), (38, 20575), (39, 20581), (46, 20608), (54, 20638), (57, 20650), (60, 20659), (73, 20719), (88, 20806), (89, 20812),

Gene: MichaelScott_24 Start: 21100, Stop: 21606, Start Num: 11

Candidate Starts for MichaelScott_24:

(Start: 11 @21100 has 18 MA's), (Start: 14 @21106 has 1 MA's), (20, 21124), (26, 21154), (27, 21157), (33, 21178), (52, 21256), (57, 21274), (60, 21283), (84, 21433), (86, 21442), (96, 21502),

Gene: MintFen_24 Start: 20700, Stop: 21158, Start Num: 7

Candidate Starts for MintFen_24:

(Start: 7 @20700 has 62 MA's), (26, 20763), (34, 20799), (38, 20814), (39, 20820), (46, 20847), (54, 20877), (57, 20889), (60, 20898), (73, 20958), (88, 21045), (89, 21051),

Gene: MissRona_26 Start: 21012, Stop: 21470, Start Num: 7

Candidate Starts for MissRona_26:

(Start: 7 @21012 has 62 MA's), (34, 21111), (38, 21126), (46, 21159), (57, 21201), (60, 21210), (73, 21270), (88, 21357), (89, 21363),

Gene: Morkie_23 Start: 18982, Stop: 19440, Start Num: 7

Candidate Starts for Morkie_23:

(Start: 7 @18982 has 62 MA's), (26, 19045), (34, 19081), (38, 19096), (46, 19129), (54, 19159), (56, 19165), (60, 19180), (73, 19240), (91, 19339), (101, 19378),

Gene: Murp_25 Start: 20968, Stop: 21426, Start Num: 7

Candidate Starts for Murp_25:

(Start: 7 @20968 has 62 MA's), (26, 21031), (34, 21067), (38, 21082), (46, 21115), (54, 21145), (60, 21166), (73, 21226), (88, 21313), (89, 21319),

Gene: Natkenzie_45 Start: 40160, Stop: 40678, Start Num: 5

Candidate Starts for Natkenzie_45:

(Start: 5 @40160 has 13 MA's), (21, 40202), (41, 40289), (57, 40349), (78, 40484), (83, 40505),

Gene: Nodigi_26 Start: 19994, Stop: 20440, Start Num: 10

Candidate Starts for Nodigi_26:

(Start: 10 @19994 has 14 MA's), (19, 20018), (31, 20072), (51, 20141), (53, 20147), (60, 20171), (74, 20255), (81, 20306), (86, 20327), (91, 20348), (103, 20396), (104, 20399),

Gene: ODay_31 Start: 22917, Stop: 23375, Start Num: 7

Candidate Starts for ODay_31:

(Start: 7 @22917 has 62 MA's), (25, 22977), (30, 22995), (39, 23037), (45, 23061), (46, 23064), (48, 23076), (52, 23088), (57, 23106), (58, 23109), (59, 23112), (61, 23118), (73, 23175), (91, 23274), (101, 23313),

Gene: Oregano_24 Start: 20765, Stop: 21271, Start Num: 11

Candidate Starts for Oregano_24:

(Start: 11 @20765 has 18 MA's), (Start: 14 @20771 has 1 MA's), (20, 20789), (26, 20819), (27, 20822), (33, 20843), (52, 20921), (57, 20939), (60, 20948), (84, 21098), (86, 21107), (96, 21167),

Gene: Orla_26 Start: 19998, Stop: 20444, Start Num: 10

Candidate Starts for Orla_26:

(Start: 10 @19998 has 14 MA's), (19, 20022), (31, 20076), (51, 20145), (53, 20151), (60, 20175), (74, 20259), (81, 20310), (86, 20331), (91, 20352), (103, 20400), (104, 20403),

Gene: PatriciaStar_24 Start: 21374, Stop: 21886, Start Num: 9

Candidate Starts for PatriciaStar_24:

(9, 21374), (19, 21398), (22, 21410), (38, 21479), (55, 21545), (57, 21554), (71, 21617), (72, 21635), (92, 21764), (98, 21797), (102, 21830),

Gene: Phauci_36 Start: 35454, Stop: 35912, Start Num: 7

Candidate Starts for Phauci_36:

(Start: 7 @35454 has 62 MA's), (30, 35532), (34, 35553), (36, 35562), (38, 35568), (63, 35664),

Gene: Phinally_43 Start: 38601, Stop: 39059, Start Num: 7

Candidate Starts for Phinally_43:

(Start: 7 @38601 has 62 MA's), (30, 38679), (38, 38715), (39, 38721), (48, 38760), (57, 38790), (63, 38811), (73, 38859),

Gene: PhorbesPhlower_23 Start: 18982, Stop: 19440, Start Num: 7

Candidate Starts for PhorbesPhlower_23:

(Start: 7 @18982 has 62 MA's), (26, 19045), (34, 19081), (38, 19096), (46, 19129), (54, 19159), (56, 19165), (60, 19180), (73, 19240), (91, 19339), (101, 19378),

Gene: PhriskyACE_23 Start: 20203, Stop: 20682, Start Num: 7

Candidate Starts for PhriskyACE_23:

(Start: 7 @20203 has 62 MA's), (Start: 15 @20218 has 1 MA's), (25, 20263), (28, 20275), (34, 20302), (38, 20317), (39, 20323), (54, 20380), (55, 20383), (56, 20386), (57, 20392), (88, 20569), (101, 20620),

Gene: PhrostedPhlake_26 Start: 21393, Stop: 21851, Start Num: 7

Candidate Starts for PhrostedPhlake_26:

(Start: 7 @21393 has 62 MA's), (26, 21456), (34, 21492), (38, 21507), (39, 21513), (46, 21540), (54, 21570), (57, 21582), (60, 21591), (73, 21651), (88, 21738), (89, 21744),

Gene: Pipp_24 Start: 20694, Stop: 21152, Start Num: 7

Candidate Starts for Pipp_24:

(Start: 7 @20694 has 62 MA's), (26, 20757), (34, 20793), (38, 20808), (39, 20814), (46, 20841), (54, 20871), (57, 20883), (60, 20892), (73, 20952), (89, 21045),

Gene: Posh_27 Start: 22293, Stop: 22751, Start Num: 7

Candidate Starts for Posh_27:

(Start: 7 @22293 has 62 MA's), (25, 22353), (30, 22371), (38, 22407), (39, 22413), (45, 22437), (46, 22440), (48, 22452), (52, 22464), (57, 22482), (58, 22485), (59, 22488), (61, 22494), (73, 22551), (89, 22644), (91, 22650),

Gene: Pumpkiney_46 Start: 37481, Stop: 37999, Start Num: 5

Candidate Starts for Pumpkiney_46:

(Start: 5 @37481 has 13 MA's), (21, 37523), (41, 37610), (57, 37670), (78, 37805),

Gene: Purplicious_47 Start: 25749, Stop: 26225, Start Num: 10

Candidate Starts for Purplicious_47:

(Start: 10 @25749 has 14 MA's), (57, 25926), (61, 25938), (73, 25995), (77, 26025), (100, 26160), (101, 26163),

Gene: Pytheas_27 Start: 22439, Stop: 22897, Start Num: 7

Candidate Starts for Pytheas_27:

(Start: 7 @22439 has 62 MA's), (25, 22499), (30, 22517), (38, 22553), (39, 22559), (45, 22583), (46, 22586), (48, 22598), (52, 22610), (57, 22628), (58, 22631), (59, 22634), (61, 22640), (73, 22697), (89, 22790), (91, 22796),

Gene: RanchParmCat_27 Start: 19721, Stop: 20167, Start Num: 10

Candidate Starts for RanchParmCat_27:

(1, 19619), (3, 19676), (4, 19694), (Start: 10 @19721 has 14 MA's), (21, 19754), (23, 19763), (46, 19856), (49, 19865), (52, 19874), (54, 19880), (66, 19922), (69, 19943), (74, 19985), (77, 20012), (80, 20030), (97, 20084),

Gene: RegnumDei_28 Start: 26352, Stop: 26855, Start Num: 8

Candidate Starts for RegnumDei_28:

(2, 26286), (Start: 8 @26352 has 3 MA's), (18, 26376), (27, 26415), (33, 26436), (47, 26493), (49, 26505), (53, 26517), (60, 26541), (68, 26577), (84, 26691), (87, 26700), (93, 26736),

Gene: RiverRaider_45 Start: 38134, Stop: 38592, Start Num: 7

Candidate Starts for RiverRaider_45:

(Start: 7 @38134 has 62 MA's), (21, 38173), (30, 38212), (38, 38248), (45, 38278), (57, 38323), (63, 38344), (100, 38527),

Gene: Rizz_27 Start: 21100, Stop: 21606, Start Num: 11

Candidate Starts for Rizz_27:

(Start: 11 @21100 has 18 MA's), (Start: 14 @21106 has 1 MA's), (20, 21124), (26, 21154), (27, 21157), (33, 21178), (52, 21256), (57, 21274), (60, 21283), (84, 21433), (86, 21442), (96, 21502),

Gene: Samba_24 Start: 20778, Stop: 21236, Start Num: 7

Candidate Starts for Samba_24:

(Start: 7 @20778 has 62 MA's), (26, 20841), (34, 20877), (38, 20892), (39, 20898), (46, 20925), (54, 20955), (57, 20967), (60, 20976), (73, 21036), (88, 21123), (89, 21129),

Gene: Samman98_24 Start: 20734, Stop: 21240, Start Num: 11

Candidate Starts for Samman98_24:

(Start: 11 @20734 has 18 MA's), (Start: 14 @20740 has 1 MA's), (20, 20758), (26, 20788), (27, 20791), (33, 20812), (52, 20890), (57, 20908), (60, 20917), (84, 21067), (86, 21076), (96, 21136),

Gene: Sampson_45 Start: 40105, Stop: 40623, Start Num: 5

Candidate Starts for Sampson_45:

(Start: 5 @40105 has 13 MA's), (21, 40147), (41, 40234), (57, 40294), (78, 40429), (83, 40450),

Gene: Scioto_46 Start: 40161, Stop: 40679, Start Num: 5

Candidate Starts for Scioto_46:

(Start: 5 @40161 has 13 MA's), (21, 40203), (41, 40290), (57, 40350), (78, 40485), (83, 40506),

Gene: Sedona_44 Start: 39952, Stop: 40410, Start Num: 7

Candidate Starts for Sedona_44:

(Start: 7 @39952 has 62 MA's), (30, 40030), (38, 40066), (39, 40072), (48, 40111), (63, 40162), (88, 40297),

Gene: Sekhmet_24 Start: 21094, Stop: 21600, Start Num: 11

Candidate Starts for Sekhmet_24:

(Start: 11 @21094 has 18 MA's), (Start: 14 @21100 has 1 MA's), (20, 21118), (26, 21148), (27, 21151), (33, 21172), (37, 21190), (52, 21250), (57, 21268), (60, 21277), (84, 21427), (86, 21436), (96, 21496),

Gene: Shlim410_24 Start: 21328, Stop: 21834, Start Num: 11

Candidate Starts for Shlim410_24:

(Start: 11 @21328 has 18 MA's), (Start: 14 @21334 has 1 MA's), (20, 21352), (26, 21382), (27, 21385), (33, 21406), (37, 21424), (52, 21484), (57, 21502), (60, 21511), (84, 21661), (86, 21670), (96, 21730),

Gene: Soos_44 Start: 25710, Stop: 26186, Start Num: 10

Candidate Starts for Soos_44:

(Start: 10 @25710 has 14 MA's), (57, 25887), (61, 25899), (73, 25956), (76, 25977), (77, 25986), (100, 26121),

Gene: Stillion_48 Start: 26295, Stop: 26771, Start Num: 10

Candidate Starts for Stillion_48:

(Start: 10 @26295 has 14 MA's), (54, 26460), (57, 26472), (61, 26484), (73, 26541), (77, 26571), (100, 26706),

Gene: Sting_47 Start: 26149, Stop: 26625, Start Num: 10

Candidate Starts for Sting_47:

(Start: 10 @26149 has 14 MA's), (57, 26326), (61, 26338), (73, 26395), (76, 26416), (77, 26425), (100, 26560),

Gene: Suerte_22 Start: 20218, Stop: 20724, Start Num: 11

Candidate Starts for Suerte_22:

(Start: 11 @20218 has 18 MA's), (Start: 14 @20224 has 1 MA's), (20, 20242), (26, 20272), (27, 20275), (33, 20296), (52, 20374), (57, 20392), (60, 20401), (84, 20551), (96, 20620),

Gene: Tardus_46 Start: 39515, Stop: 40033, Start Num: 5

Candidate Starts for Tardus_46:

(Start: 5 @39515 has 13 MA's), (21, 39557), (41, 39644), (57, 39704), (78, 39839), (83, 39860),

Gene: Thimann_24 Start: 20686, Stop: 21192, Start Num: 11

Candidate Starts for Thimann_24:

(Start: 11 @20686 has 18 MA's), (Start: 14 @20692 has 1 MA's), (20, 20710), (26, 20740), (27, 20743), (33, 20764), (52, 20842), (57, 20860), (60, 20869), (84, 21019), (96, 21088),

Gene: Tonitrus_34 Start: 22668, Stop: 23153, Start Num: 15

Candidate Starts for Tonitrus_34:

(Start: 7 @22653 has 62 MA's), (Start: 8 @22656 has 3 MA's), (Start: 10 @22659 has 14 MA's), (Start: 15 @22668 has 1 MA's), (24, 22704), (32, 22740), (43, 22788), (44, 22791), (52, 22821), (63, 22860), (67, 22872), (87, 22995), (95, 23052),

Gene: Trine_23 Start: 18593, Stop: 19054, Start Num: 7

Candidate Starts for Trine_23:

(6, 18590), (Start: 7 @18593 has 62 MA's), (26, 18656), (28, 18665), (34, 18692), (36, 18701), (57, 18782), (60, 18791), (62, 18800),

Gene: Tuti_24 Start: 21090, Stop: 21569, Start Num: 7

Candidate Starts for Tuti_24:

(Start: 7 @21090 has 62 MA's), (Start: 15 @21105 has 1 MA's), (25, 21150), (28, 21162), (34, 21189), (38, 21204), (39, 21210), (54, 21267), (55, 21270), (56, 21273), (57, 21279), (88, 21456), (101, 21507),

Gene: Twinkle_24 Start: 22387, Stop: 22893, Start Num: 11

Candidate Starts for Twinkle_24:

(Start: 11 @22387 has 18 MA's), (Start: 14 @22393 has 1 MA's), (20, 22411), (26, 22441), (27, 22444), (33, 22465), (37, 22483), (52, 22543), (57, 22561), (60, 22570), (84, 22720), (86, 22729), (96, 22789),

Gene: UmaThurman_24 Start: 20825, Stop: 21283, Start Num: 7

Candidate Starts for UmaThurman_24:

(Start: 7 @20825 has 62 MA's), (26, 20888), (34, 20924), (38, 20939), (39, 20945), (46, 20972), (54, 21002), (57, 21014), (60, 21023), (73, 21083), (88, 21170), (89, 21176),

Gene: Upyo_23 Start: 18792, Stop: 19304, Start Num: 13

Candidate Starts for Upyo_23:

(Start: 13 @18792 has 1 MA's), (19, 18810), (21, 18819), (36, 18882), (48, 18933), (60, 18972), (71, 19026), (92, 19167), (93, 19170),

Gene: Utz_24 Start: 20695, Stop: 21153, Start Num: 7

Candidate Starts for Utz_24:

(Start: 7 @20695 has 62 MA's), (26, 20758), (34, 20794), (38, 20809), (39, 20815), (46, 20842), (54, 20872), (57, 20884), (60, 20893), (73, 20953), (88, 21040), (89, 21046),

Gene: Verity_45 Start: 40925, Stop: 41440, Start Num: 5

Candidate Starts for Verity_45:

(Start: 5 @40925 has 13 MA's), (21, 40967), (41, 41054), (57, 41114), (75, 41216), (78, 41249), (83, 41270),

Gene: ViaConlectus_45 Start: 38795, Stop: 39313, Start Num: 5

Candidate Starts for ViaConlectus_45:

(Start: 5 @38795 has 13 MA's), (21, 38837), (41, 38924), (57, 38984), (78, 39119), (83, 39140),

Gene: Walrus_26 Start: 21240, Stop: 21698, Start Num: 7

Candidate Starts for Walrus_26:

(Start: 7 @21240 has 62 MA's), (26, 21303), (34, 21339), (38, 21354), (39, 21360), (46, 21387), (54, 21417), (57, 21429), (60, 21438), (73, 21498), (88, 21585), (89, 21591),

Gene: WinkNick_24 Start: 20719, Stop: 21225, Start Num: 11

Candidate Starts for WinkNick_24:

(Start: 11 @20719 has 18 MA's), (Start: 14 @20725 has 1 MA's), (20, 20743), (26, 20773), (27, 20776), (33, 20797), (52, 20875), (57, 20893), (60, 20902), (84, 21052), (86, 21061), (96, 21121),

Gene: Wisp_23 Start: 20410, Stop: 20868, Start Num: 7

Candidate Starts for Wisp_23:

(Start: 7 @20410 has 62 MA's), (26, 20473), (34, 20509), (38, 20524), (39, 20530), (46, 20557), (54, 20587), (57, 20599), (60, 20608), (73, 20668), (88, 20755), (89, 20761),

Gene: Wrigley_27 Start: 22190, Stop: 22648, Start Num: 7

Candidate Starts for Wrigley_27:

(Start: 7 @22190 has 62 MA's), (25, 22250), (30, 22268), (38, 22304), (39, 22310), (45, 22334), (46, 22337), (48, 22349), (52, 22361), (57, 22379), (58, 22382), (59, 22385), (61, 22391), (73, 22448), (89,

22541), (91, 22547),

Gene: Yakult_25 Start: 19569, Stop: 20021, Start Num: 10

Candidate Starts for Yakult_25:

(1, 19473), (3, 19530), (6, 19560), (Start: 7 @19563 has 62 MA's), (Start: 10 @19569 has 14 MA's), (17, 19584), (19, 19593), (21, 19602), (41, 19689), (46, 19707), (53, 19728), (61, 19755), (65, 19770), (77, 19863), (79, 19878), (80, 19881), (103, 19977),

Gene: Zarbodnamra_24 Start: 20699, Stop: 21157, Start Num: 7

Candidate Starts for Zarbodnamra_24:

(Start: 7 @20699 has 62 MA's), (26, 20762), (34, 20798), (38, 20813), (39, 20819), (46, 20846), (54, 20876), (57, 20888), (60, 20897), (73, 20957), (88, 21044), (89, 21050),

Gene: Zilla_24 Start: 20717, Stop: 21175, Start Num: 7

Candidate Starts for Zilla_24:

(Start: 7 @20717 has 62 MA's), (26, 20780), (34, 20816), (38, 20831), (39, 20837), (46, 20864), (54, 20894), (57, 20906), (60, 20915), (73, 20975), (88, 21062), (89, 21068),

Gene: Zipp_46 Start: 40840, Stop: 41355, Start Num: 5

Candidate Starts for Zipp_46:

(Start: 5 @40840 has 13 MA's), (21, 40882), (41, 40969), (57, 41029), (75, 41131), (78, 41164), (83, 41185),

Gene: Zitch_48 Start: 38950, Stop: 39468, Start Num: 5

Candidate Starts for Zitch_48:

(Start: 5 @38950 has 13 MA's), (21, 38992), (41, 39079), (57, 39139), (78, 39274),