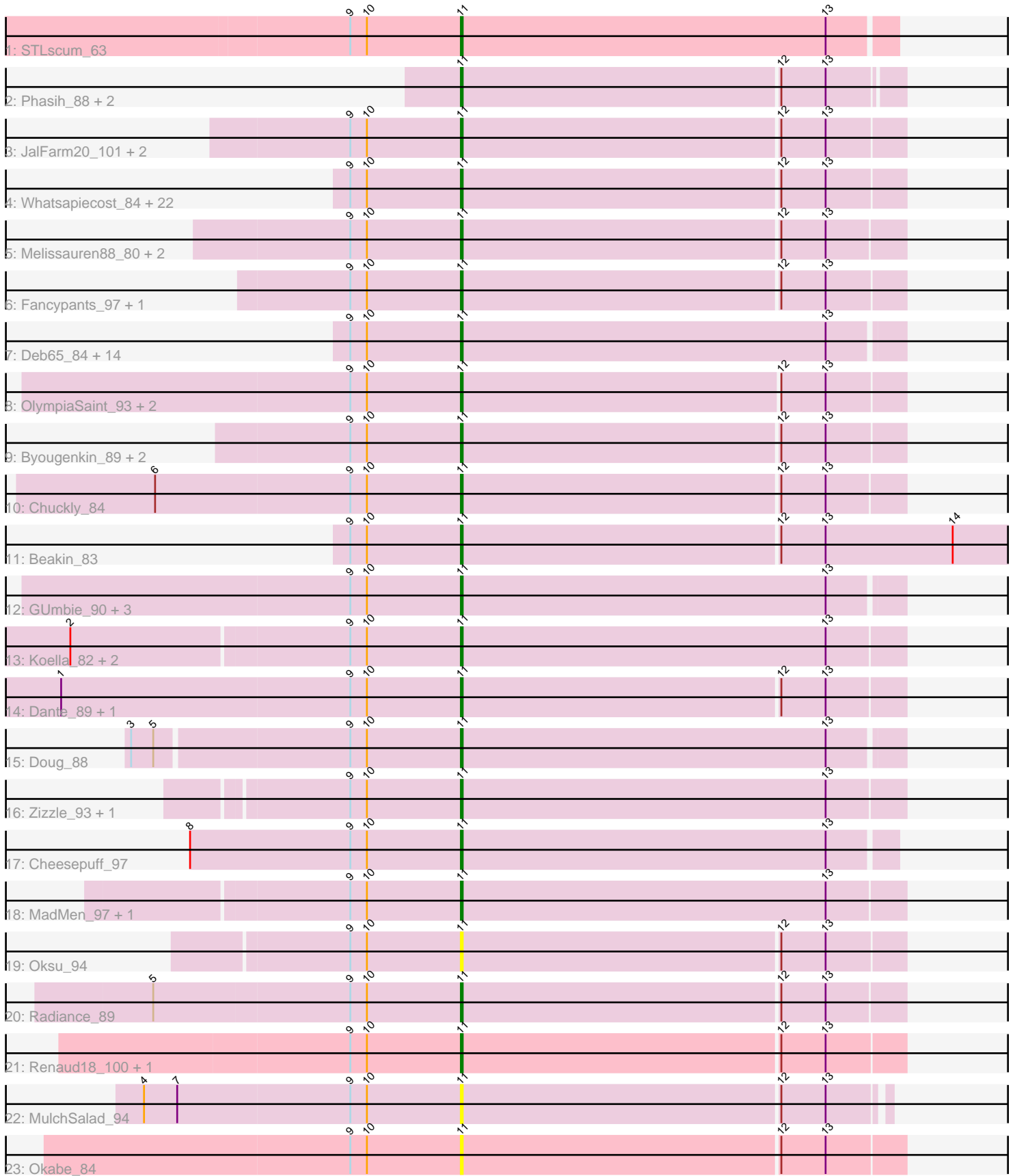


Pham 301181



Note: Tracks are now grouped by subcluster and scaled. Switching in subcluster is indicated by changes in track color. Track scale is now set by default to display the region 30 bp upstream of start 1 to 30 bp downstream of the last possible start. If this default region is judged to be packed too tightly with annotated starts, the track will be further scaled to only show that region of the ORF with annotated starts. This action will be indicated by adding "Zoomed" to the title. For starts, yellow indicates the location of called starts comprised solely of Glimmer/GeneMark auto-annotations, green indicates the location of called starts with at least 1 manual gene annotation.

Pham 301181 Report

This analysis was run 06/08/26 on database version 649.

Pham number 301181 has 79 members, 9 are drafts.

Phages represented in each track:

- Track 1 : STLscum_63
- Track 2 : Phasih_88, Avani_97, Tootsieroll_86
- Track 3 : JalFarm20_101, Brushbloom_92, Eradicator_84
- Track 4 : Whatsapiecost_84, Donkeykong_98, Che8_98, Enzomatic_101, Bipolar_93, Bubbles123_85, Polo2Bam_100, SeaLumen_97, MisterCuddles_90, Polka14_95, NewHope4_96, Cornie_88, Girr_89, Beanstalk_87, Sandalphon_89, SuperGrey_92, Wachhund_88, IbOuu_82, Empress_91, Fastidio_94, Scottish_91, KingMidas_91, Gandalph_91
- Track 5 : Melissauren88_80, MinionDave_90, Guppsters_85
- Track 6 : Fancypants_97, Latretium_93
- Track 7 : Deb65_84, Geralt_84, Leozinho_88, RitaG_90, Ogotopogo_97, GigiOuiOui_86, MulchExplorer_91, Juice456_90, Nimbo_83, Daenerys_89, QuickMath_92, Rita_92, PHappiness_91, OldBen_88, Ruby_87
- Track 8 : OlympiaSaint_93, Jarcob_93, Spoonbill_89
- Track 9 : Byougenkin_89, Firehouse51_86, OwlsT2W_90
- Track 10 : Chuckly_84
- Track 11 : Beakin_83
- Track 12 : GUmbie_90, Tchotchke_85, Mattes_90, RockyHorror_95
- Track 13 : Koella_82, NormanBulbieJr_88, Priscilla_90
- Track 14 : Dante_89, Sabbb_94
- Track 15 : Doug_88
- Track 16 : Zizzle_93, Jennelsea_86
- Track 17 : Cheesepuff_97
- Track 18 : MadMen_97, TDanisky_101
- Track 19 : Oksu_94
- Track 20 : Radiance_89
- Track 21 : Renaud18_100, DosHalletts_88
- Track 22 : MulchSalad_94
- Track 23 : Okabe_84

Summary of Final Annotations (See graph section above for start numbers):

The start number called the most often in the published annotations is 11, it was called in 70 of the 70 non-draft genes in the pham.

Genes that call this "Most Annotated" start:

- Avani_97, Beakin_83, Beanstalk_87, Bipolar_93, Brushbloom_92, Bubbles123_85, Byougenkin_89, Che8_98, Cheesepuff_97, Chuckly_84, Cornie_88, Daenerys_89, Dante_89, Deb65_84, Donkeykong_98, DosHalletts_88, Doug_88, Empress_91, Enzomatic_101, Eradicator_84, Fancypants_97, Fastidio_94, Firehouse51_86, GUmbie_90, Gandalph_91, Geralt_84, GigiOuiOui_86, Girr_89, Guppsters_85, IbOuu_82, JalFarm20_101, Jarcob_93, Jennelsea_86, Juice456_90, KingMidas_91, Koella_82, Latretium_93, Leozinho_88, MadMen_97, Mattes_90, Melissauren88_80, MinionDave_90, MisterCuddles_90, MulchExplorer_91, MulchSalad_94, NewHope4_96, Nimbo_83, NormanBulbieJr_88, Ogotogo_97, Okabe_84, Oksu_94, OldBen_88, OlympiaSaint_93, OwlsT2W_90, PHappiness_91, Phasih_88, Polka14_95, Polo2Bam_100, Priscilla_90, QuickMath_92, Radiance_89, Renaud18_100, RitaG_90, Rita_92, RockyHorror_95, Ruby_87, STLscum_63, Sabbb_94, Sandalphon_89, Scottish_91, SeaLumen_97, Spoonbill_89, SuperGrey_92, TDanisky_101, Tchotchke_85, Tootsieroll_86, Wachhund_88, Whatsapiecost_84, Zizzle_93,

Genes that have the "Most Annotated" start but do not call it:

-

Genes that do not have the "Most Annotated" start:

-

Summary by start number:

Start 11:

- Found in 79 of 79 (100.0%) of genes in pham
- Manual Annotations of this start: 70 of 70
- Called 100.0% of time when present
- Phage (with cluster) where this start called: Avani_97 (F2), Beakin_83 (F1), Beanstalk_87 (F1), Bipolar_93 (F1), Brushbloom_92 (F1), Bubbles123_85 (F1), Byougenkin_89 (F1), Che8_98 (F1), Cheesepuff_97 (F1), Chuckly_84 (F1), Cornie_88 (F5), Daenerys_89 (F1), Dante_89 (F1), Deb65_84 (F1), Donkeykong_98 (F1), DosHalletts_88 (F1), Doug_88 (F1), Empress_91 (F1), Enzomatic_101 (F1), Eradicator_84 (F1), Fancypants_97 (F1), Fastidio_94 (F1), Firehouse51_86 (F1), GUmbie_90 (F1), Gandalph_91 (F1), Geralt_84 (F1), GigiOuiOui_86 (F1), Girr_89 (F1), Guppsters_85 (F1), IbOuu_82 (F1), JalFarm20_101 (F1), Jarcob_93 (F1), Jennelsea_86 (F1), Juice456_90 (F1), KingMidas_91 (F1), Koella_82 (F1), Latretium_93 (F1), Leozinho_88 (F1), MadMen_97 (F1), Mattes_90 (F1), Melissauren88_80 (F1), MinionDave_90 (F1), MisterCuddles_90 (F1), MulchExplorer_91 (F1), MulchSalad_94 (F7), NewHope4_96 (F1), Nimbo_83 (F1), NormanBulbieJr_88 (F1), Ogotogo_97 (F1), Okabe_84 (F8), Oksu_94 (F1), OldBen_88 (F1), OlympiaSaint_93 (F1), OwlsT2W_90 (F1), PHappiness_91 (F1), Phasih_88 (F1), Polka14_95 (F1), Polo2Bam_100 (F1), Priscilla_90 (F1), QuickMath_92 (F1), Radiance_89 (F1), Renaud18_100 (F4), RitaG_90 (F1), Rita_92 (F1), RockyHorror_95 (F1), Ruby_87 (F1), STLscum_63 (A1), Sabbb_94 (F1), Sandalphon_89 (F1), Scottish_91 (F1), SeaLumen_97 (F1), Spoonbill_89 (F1), SuperGrey_92 (F1), TDanisky_101 (F1), Tchotchke_85 (F1), Tootsieroll_86 (F1), Wachhund_88 (F1), Whatsapiecost_84 (F1), Zizzle_93 (F1),

Summary by clusters:

There are 7 clusters represented in this pham: F1, F2, F4, F5, F7, F8, A1,

Info for manual annotations of cluster A1:

•Start number 11 was manually annotated 1 time for cluster A1.

Info for manual annotations of cluster F1:

•Start number 11 was manually annotated 66 times for cluster F1.

Info for manual annotations of cluster F2:

•Start number 11 was manually annotated 1 time for cluster F2.

Info for manual annotations of cluster F4:

•Start number 11 was manually annotated 1 time for cluster F4.

Info for manual annotations of cluster F5:

•Start number 11 was manually annotated 1 time for cluster F5.

Gene Information:

Gene: Avani_97 Start: 48825, Stop: 49061, Start Num: 11

Candidate Starts for Avani_97:

(Start: 11 @48825 has 70 MA's), (12, 48996), (13, 49020),

Gene: Beakin_83 Start: 47922, Stop: 48218, Start Num: 11

Candidate Starts for Beakin_83:

(9, 47862), (10, 47871), (Start: 11 @47922 has 70 MA's), (12, 48093), (13, 48117), (14, 48186),

Gene: Beanstalk_87 Start: 50321, Stop: 50557, Start Num: 11

Candidate Starts for Beanstalk_87:

(9, 50261), (10, 50270), (Start: 11 @50321 has 70 MA's), (12, 50492), (13, 50516),

Gene: Bipolar_93 Start: 53088, Stop: 53324, Start Num: 11

Candidate Starts for Bipolar_93:

(9, 53028), (10, 53037), (Start: 11 @53088 has 70 MA's), (12, 53259), (13, 53283),

Gene: Brushbloom_92 Start: 52366, Stop: 52602, Start Num: 11

Candidate Starts for Brushbloom_92:

(9, 52306), (10, 52315), (Start: 11 @52366 has 70 MA's), (12, 52537), (13, 52561),

Gene: Bubbles123_85 Start: 50944, Stop: 51180, Start Num: 11

Candidate Starts for Bubbles123_85:

(9, 50884), (10, 50893), (Start: 11 @50944 has 70 MA's), (12, 51115), (13, 51139),

Gene: Byougenkin_89 Start: 48702, Stop: 48938, Start Num: 11

Candidate Starts for Byougenkin_89:

(9, 48642), (10, 48651), (Start: 11 @48702 has 70 MA's), (12, 48873), (13, 48897),

Gene: Che8_98 Start: 52901, Stop: 53140, Start Num: 11

Candidate Starts for Che8_98:

(9, 52841), (10, 52850), (Start: 11 @52901 has 70 MA's), (12, 53075), (13, 53099),

Gene: Cheese puff_97 Start: 51357, Stop: 51590, Start Num: 11

Candidate Starts for Cheese puff_97:

(8, 51210), (9, 51297), (10, 51306), (Start: 11 @51357 has 70 MA's), (13, 51555),

Gene: Chuckly_84 Start: 47404, Stop: 47640, Start Num: 11

Candidate Starts for Chuckly_84:

(6, 47239), (9, 47344), (10, 47353), (Start: 11 @47404 has 70 MA's), (12, 47575), (13, 47599),

Gene: Cornie_88 Start: 50388, Stop: 50624, Start Num: 11

Candidate Starts for Cornie_88:

(9, 50328), (10, 50337), (Start: 11 @50388 has 70 MA's), (12, 50559), (13, 50583),

Gene: Daenerys_89 Start: 52494, Stop: 52730, Start Num: 11

Candidate Starts for Daenerys_89:

(9, 52434), (10, 52443), (Start: 11 @52494 has 70 MA's), (13, 52692),

Gene: Dante_89 Start: 52666, Stop: 52902, Start Num: 11

Candidate Starts for Dante_89:

(1, 52450), (9, 52606), (10, 52615), (Start: 11 @52666 has 70 MA's), (12, 52837), (13, 52861),

Gene: Deb65_84 Start: 50218, Stop: 50454, Start Num: 11

Candidate Starts for Deb65_84:

(9, 50158), (10, 50167), (Start: 11 @50218 has 70 MA's), (13, 50416),

Gene: Donkeykong_98 Start: 53578, Stop: 53814, Start Num: 11

Candidate Starts for Donkeykong_98:

(9, 53518), (10, 53527), (Start: 11 @53578 has 70 MA's), (12, 53749), (13, 53773),

Gene: DosHalletts_88 Start: 51582, Stop: 51818, Start Num: 11

Candidate Starts for DosHalletts_88:

(9, 51522), (10, 51531), (Start: 11 @51582 has 70 MA's), (12, 51753), (13, 51777),

Gene: Doug_88 Start: 52337, Stop: 52573, Start Num: 11

Candidate Starts for Doug_88:

(3, 52163), (5, 52175), (9, 52277), (10, 52286), (Start: 11 @52337 has 70 MA's), (13, 52535),

Gene: Empress_91 Start: 51396, Stop: 51632, Start Num: 11

Candidate Starts for Empress_91:

(9, 51336), (10, 51345), (Start: 11 @51396 has 70 MA's), (12, 51567), (13, 51591),

Gene: Enzomatic_101 Start: 50342, Stop: 50572, Start Num: 11

Candidate Starts for Enzomatic_101:

(9, 50282), (10, 50291), (Start: 11 @50342 has 70 MA's), (12, 50513), (13, 50537),

Gene: Eradicator_84 Start: 49799, Stop: 50035, Start Num: 11

Candidate Starts for Eradicator_84:

(9, 49739), (10, 49748), (Start: 11 @49799 has 70 MA's), (12, 49970), (13, 49994),

Gene: Fancypants_97 Start: 53902, Stop: 54138, Start Num: 11

Candidate Starts for Fancypants_97:

(9, 53842), (10, 53851), (Start: 11 @53902 has 70 MA's), (12, 54073), (13, 54097),

Gene: Fastidio_94 Start: 49445, Stop: 49675, Start Num: 11
Candidate Starts for Fastidio_94:
(9, 49385), (10, 49394), (Start: 11 @49445 has 70 MA's), (12, 49616), (13, 49640),

Gene: Firehouse51_86 Start: 52035, Stop: 52259, Start Num: 11
Candidate Starts for Firehouse51_86:
(9, 51975), (10, 51984), (Start: 11 @52035 has 70 MA's), (12, 52206), (13, 52230),

Gene: GUmbie_90 Start: 51346, Stop: 51582, Start Num: 11
Candidate Starts for GUmbie_90:
(9, 51286), (10, 51295), (Start: 11 @51346 has 70 MA's), (13, 51544),

Gene: Gandalph_91 Start: 48872, Stop: 49105, Start Num: 11
Candidate Starts for Gandalph_91:
(9, 48812), (10, 48821), (Start: 11 @48872 has 70 MA's), (12, 49043), (13, 49067),

Gene: Geralt_84 Start: 50216, Stop: 50452, Start Num: 11
Candidate Starts for Geralt_84:
(9, 50156), (10, 50165), (Start: 11 @50216 has 70 MA's), (13, 50414),

Gene: GigiOuiOui_86 Start: 50349, Stop: 50585, Start Num: 11
Candidate Starts for GigiOuiOui_86:
(9, 50289), (10, 50298), (Start: 11 @50349 has 70 MA's), (13, 50547),

Gene: Girr_89 Start: 51613, Stop: 51849, Start Num: 11
Candidate Starts for Girr_89:
(9, 51553), (10, 51562), (Start: 11 @51613 has 70 MA's), (12, 51784), (13, 51808),

Gene: Guppsters_85 Start: 48781, Stop: 49017, Start Num: 11
Candidate Starts for Guppsters_85:
(9, 48721), (10, 48730), (Start: 11 @48781 has 70 MA's), (12, 48952), (13, 48976),

Gene: lbOuu_82 Start: 49253, Stop: 49489, Start Num: 11
Candidate Starts for lbOuu_82:
(9, 49193), (10, 49202), (Start: 11 @49253 has 70 MA's), (12, 49424), (13, 49448),

Gene: JalFarm20_101 Start: 53265, Stop: 53501, Start Num: 11
Candidate Starts for JalFarm20_101:
(9, 53205), (10, 53214), (Start: 11 @53265 has 70 MA's), (12, 53436), (13, 53460),

Gene: Jarcob_93 Start: 52636, Stop: 52872, Start Num: 11
Candidate Starts for Jarcob_93:
(9, 52576), (10, 52585), (Start: 11 @52636 has 70 MA's), (12, 52807), (13, 52831),

Gene: Jennelsea_86 Start: 49934, Stop: 50173, Start Num: 11
Candidate Starts for Jennelsea_86:
(9, 49874), (10, 49883), (Start: 11 @49934 has 70 MA's), (13, 50132),

Gene: Juice456_90 Start: 51122, Stop: 51358, Start Num: 11
Candidate Starts for Juice456_90:
(9, 51062), (10, 51071), (Start: 11 @51122 has 70 MA's), (13, 51320),

Gene: KingMidas_91 Start: 51627, Stop: 51863, Start Num: 11
Candidate Starts for KingMidas_91:
(9, 51567), (10, 51576), (Start: 11 @51627 has 70 MA's), (12, 51798), (13, 51822),

Gene: Koella_82 Start: 47796, Stop: 48035, Start Num: 11
Candidate Starts for Koella_82:
(2, 47589), (9, 47736), (10, 47745), (Start: 11 @47796 has 70 MA's), (13, 47994),

Gene: Latretium_93 Start: 51905, Stop: 52129, Start Num: 11
Candidate Starts for Latretium_93:
(9, 51845), (10, 51854), (Start: 11 @51905 has 70 MA's), (12, 52076), (13, 52100),

Gene: Leozinho_88 Start: 48663, Stop: 48899, Start Num: 11
Candidate Starts for Leozinho_88:
(9, 48603), (10, 48612), (Start: 11 @48663 has 70 MA's), (13, 48861),

Gene: MadMen_97 Start: 51947, Stop: 52186, Start Num: 11
Candidate Starts for MadMen_97:
(9, 51887), (10, 51896), (Start: 11 @51947 has 70 MA's), (13, 52145),

Gene: Mattes_90 Start: 51769, Stop: 52008, Start Num: 11
Candidate Starts for Mattes_90:
(9, 51709), (10, 51718), (Start: 11 @51769 has 70 MA's), (13, 51967),

Gene: Melissauren88_80 Start: 47616, Stop: 47852, Start Num: 11
Candidate Starts for Melissauren88_80:
(9, 47556), (10, 47565), (Start: 11 @47616 has 70 MA's), (12, 47787), (13, 47811),

Gene: MinionDave_90 Start: 51739, Stop: 51969, Start Num: 11
Candidate Starts for MinionDave_90:
(9, 51679), (10, 51688), (Start: 11 @51739 has 70 MA's), (12, 51910), (13, 51934),

Gene: MisterCuddles_90 Start: 51613, Stop: 51849, Start Num: 11
Candidate Starts for MisterCuddles_90:
(9, 51553), (10, 51562), (Start: 11 @51613 has 70 MA's), (12, 51784), (13, 51808),

Gene: MulchExplorer_91 Start: 50893, Stop: 51129, Start Num: 11
Candidate Starts for MulchExplorer_91:
(9, 50833), (10, 50842), (Start: 11 @50893 has 70 MA's), (13, 51091),

Gene: MulchSalad_94 Start: 52605, Stop: 52829, Start Num: 11
Candidate Starts for MulchSalad_94:
(4, 52434), (7, 52452), (9, 52545), (10, 52554), (Start: 11 @52605 has 70 MA's), (12, 52776), (13, 52800),

Gene: NewHope4_96 Start: 50488, Stop: 50718, Start Num: 11
Candidate Starts for NewHope4_96:
(9, 50428), (10, 50437), (Start: 11 @50488 has 70 MA's), (12, 50659), (13, 50683),

Gene: Nimbo_83 Start: 50218, Stop: 50454, Start Num: 11
Candidate Starts for Nimbo_83:
(9, 50158), (10, 50167), (Start: 11 @50218 has 70 MA's), (13, 50416),

Gene: NormanBulbieJr_88 Start: 51810, Stop: 52049, Start Num: 11
Candidate Starts for NormanBulbieJr_88:
(2, 51603), (9, 51750), (10, 51759), (Start: 11 @51810 has 70 MA's), (13, 52008),

Gene: Ogopogo_97 Start: 51107, Stop: 51346, Start Num: 11
Candidate Starts for Ogopogo_97:
(9, 51047), (10, 51056), (Start: 11 @51107 has 70 MA's), (13, 51305),

Gene: Okabe_84 Start: 47670, Stop: 47906, Start Num: 11
Candidate Starts for Okabe_84:
(9, 47610), (10, 47619), (Start: 11 @47670 has 70 MA's), (12, 47841), (13, 47865),

Gene: Oksu_94 Start: 53367, Stop: 53603, Start Num: 11
Candidate Starts for Oksu_94:
(9, 53307), (10, 53316), (Start: 11 @53367 has 70 MA's), (12, 53538), (13, 53562),

Gene: OldBen_88 Start: 51610, Stop: 51846, Start Num: 11
Candidate Starts for OldBen_88:
(9, 51550), (10, 51559), (Start: 11 @51610 has 70 MA's), (13, 51808),

Gene: OlympiaSaint_93 Start: 51979, Stop: 52215, Start Num: 11
Candidate Starts for OlympiaSaint_93:
(9, 51919), (10, 51928), (Start: 11 @51979 has 70 MA's), (12, 52150), (13, 52174),

Gene: OwlsT2W_90 Start: 50280, Stop: 50516, Start Num: 11
Candidate Starts for OwlsT2W_90:
(9, 50220), (10, 50229), (Start: 11 @50280 has 70 MA's), (12, 50451), (13, 50475),

Gene: PHappiness_91 Start: 52439, Stop: 52675, Start Num: 11
Candidate Starts for PHappiness_91:
(9, 52379), (10, 52388), (Start: 11 @52439 has 70 MA's), (13, 52637),

Gene: Phasih_88 Start: 49971, Stop: 50204, Start Num: 11
Candidate Starts for Phasih_88:
(Start: 11 @49971 has 70 MA's), (12, 50142), (13, 50166),

Gene: Polka14_95 Start: 53191, Stop: 53427, Start Num: 11
Candidate Starts for Polka14_95:
(9, 53131), (10, 53140), (Start: 11 @53191 has 70 MA's), (12, 53362), (13, 53386),

Gene: Polo2Bam_100 Start: 50342, Stop: 50572, Start Num: 11
Candidate Starts for Polo2Bam_100:
(9, 50282), (10, 50291), (Start: 11 @50342 has 70 MA's), (12, 50513), (13, 50537),

Gene: Priscilla_90 Start: 51908, Stop: 52147, Start Num: 11
Candidate Starts for Priscilla_90:
(2, 51701), (9, 51848), (10, 51857), (Start: 11 @51908 has 70 MA's), (13, 52106),

Gene: QuickMath_92 Start: 51474, Stop: 51710, Start Num: 11
Candidate Starts for QuickMath_92:
(9, 51414), (10, 51423), (Start: 11 @51474 has 70 MA's), (13, 51672),

Gene: Radiance_89 Start: 51319, Stop: 51555, Start Num: 11

Candidate Starts for Radiance_89:

(5, 51154), (9, 51259), (10, 51268), (Start: 11 @51319 has 70 MA's), (12, 51490), (13, 51514),

Gene: Renaud18_100 Start: 51917, Stop: 52153, Start Num: 11

Candidate Starts for Renaud18_100:

(9, 51857), (10, 51866), (Start: 11 @51917 has 70 MA's), (12, 52088), (13, 52112),

Gene: Rita_92 Start: 52822, Stop: 53061, Start Num: 11

Candidate Starts for Rita_92:

(9, 52762), (10, 52771), (Start: 11 @52822 has 70 MA's), (13, 53020),

Gene: RitaG_90 Start: 52241, Stop: 52477, Start Num: 11

Candidate Starts for RitaG_90:

(9, 52181), (10, 52190), (Start: 11 @52241 has 70 MA's), (13, 52439),

Gene: RockyHorror_95 Start: 51354, Stop: 51593, Start Num: 11

Candidate Starts for RockyHorror_95:

(9, 51294), (10, 51303), (Start: 11 @51354 has 70 MA's), (13, 51552),

Gene: Ruby_87 Start: 51614, Stop: 51850, Start Num: 11

Candidate Starts for Ruby_87:

(9, 51554), (10, 51563), (Start: 11 @51614 has 70 MA's), (13, 51812),

Gene: STLscum_63 Start: 41682, Stop: 41449, Start Num: 11

Candidate Starts for STLscum_63:

(9, 41742), (10, 41733), (Start: 11 @41682 has 70 MA's), (13, 41484),

Gene: Sabbb_94 Start: 49914, Stop: 50150, Start Num: 11

Candidate Starts for Sabbb_94:

(1, 49698), (9, 49854), (10, 49863), (Start: 11 @49914 has 70 MA's), (12, 50085), (13, 50109),

Gene: Sandalphon_89 Start: 52466, Stop: 52702, Start Num: 11

Candidate Starts for Sandalphon_89:

(9, 52406), (10, 52415), (Start: 11 @52466 has 70 MA's), (12, 52637), (13, 52661),

Gene: Scottish_91 Start: 51066, Stop: 51302, Start Num: 11

Candidate Starts for Scottish_91:

(9, 51006), (10, 51015), (Start: 11 @51066 has 70 MA's), (12, 51237), (13, 51261),

Gene: SeaLumen_97 Start: 50342, Stop: 50572, Start Num: 11

Candidate Starts for SeaLumen_97:

(9, 50282), (10, 50291), (Start: 11 @50342 has 70 MA's), (12, 50513), (13, 50537),

Gene: Spoonbill_89 Start: 49405, Stop: 49641, Start Num: 11

Candidate Starts for Spoonbill_89:

(9, 49345), (10, 49354), (Start: 11 @49405 has 70 MA's), (12, 49576), (13, 49600),

Gene: SuperGrey_92 Start: 53452, Stop: 53688, Start Num: 11

Candidate Starts for SuperGrey_92:

(9, 53392), (10, 53401), (Start: 11 @53452 has 70 MA's), (12, 53623), (13, 53647),

Gene: TDanisky_101 Start: 50649, Stop: 50888, Start Num: 11

Candidate Starts for TDanisky_101:

(9, 50589), (10, 50598), (Start: 11 @50649 has 70 MA's), (13, 50847),

Gene: Tchotchke_85 Start: 50040, Stop: 50279, Start Num: 11

Candidate Starts for Tchotchke_85:

(9, 49980), (10, 49989), (Start: 11 @50040 has 70 MA's), (13, 50238),

Gene: Tootsieroll_86 Start: 51876, Stop: 52112, Start Num: 11

Candidate Starts for Tootsieroll_86:

(Start: 11 @51876 has 70 MA's), (12, 52047), (13, 52071),

Gene: Wachhund_88 Start: 48256, Stop: 48486, Start Num: 11

Candidate Starts for Wachhund_88:

(9, 48196), (10, 48205), (Start: 11 @48256 has 70 MA's), (12, 48427), (13, 48451),

Gene: Whatsapiecost_84 Start: 46263, Stop: 46499, Start Num: 11

Candidate Starts for Whatsapiecost_84:

(9, 46203), (10, 46212), (Start: 11 @46263 has 70 MA's), (12, 46434), (13, 46458),

Gene: Zizzle_93 Start: 52799, Stop: 53038, Start Num: 11

Candidate Starts for Zizzle_93:

(9, 52739), (10, 52748), (Start: 11 @52799 has 70 MA's), (13, 52997),