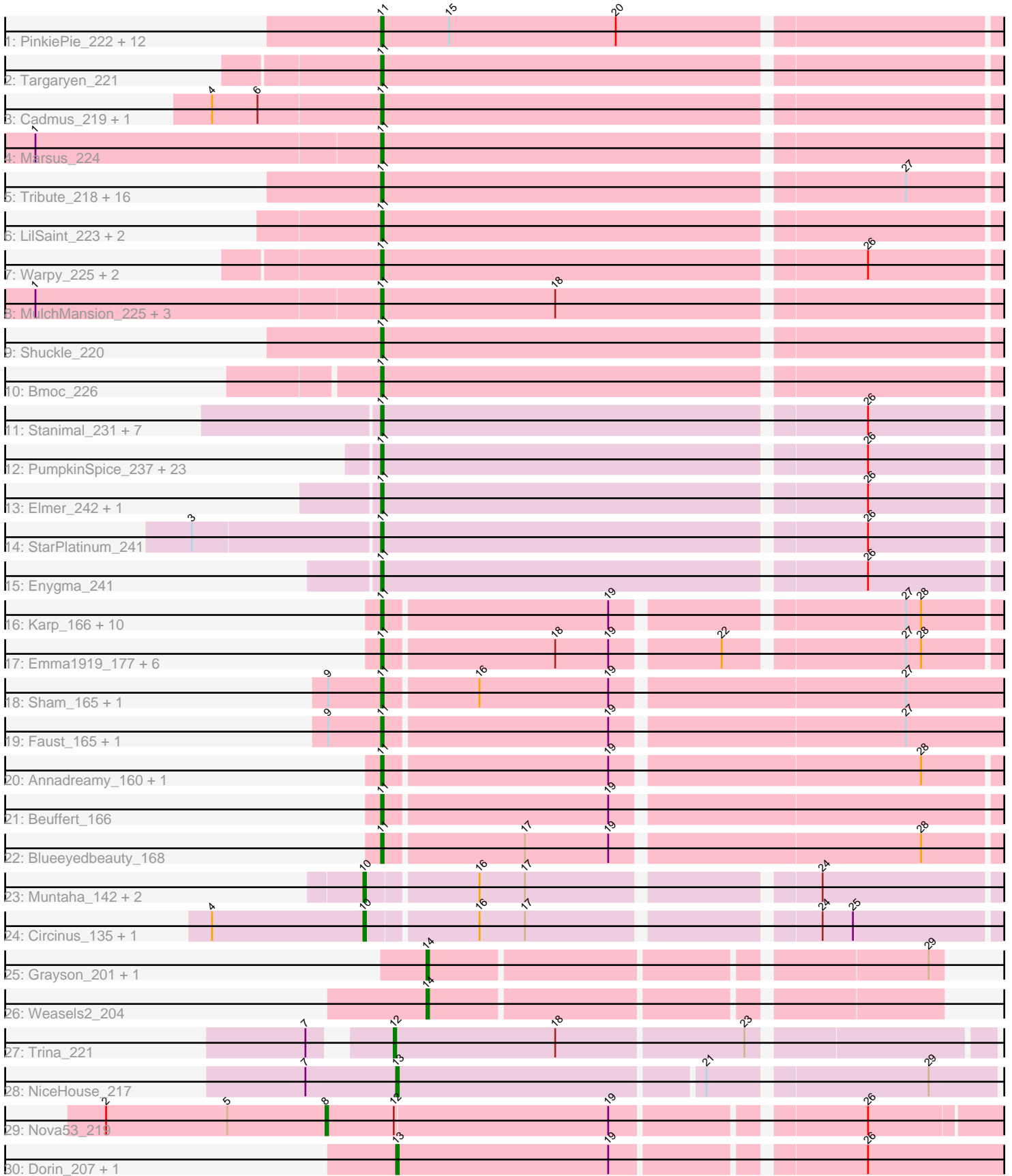


Pham 301190



Note: Tracks are now grouped by subcluster and scaled. Switching in subcluster is indicated by changes in track color. Track scale is now set by default to display the region 30 bp upstream of start 1 to 30 bp downstream of the last possible start. If this default region is judged to be packed too tightly with annotated starts, the track will be further scaled to only show that region of the ORF with annotated starts. This action will be indicated by adding "Zoomed" to the title. For starts, yellow indicates the location of called starts comprised solely of Glimmer/GeneMark auto-annotations, green indicates the location of called starts with at least 1 manual gene annotation.

Pham 301190 Report

This analysis was run 06/08/26 on database version 649.

Pham number 301190 has 121 members, 7 are drafts.

Phages represented in each track:

- Track 1 : PinkiePie_222, Paradiddles_214, FreddyDRoo_226, Bartholomune_222, Persimmon_225, Braelyn_218, NootNoot_219, Navo_216, Eliot67_224, WhereRU_221, Liandry_222, Davielle_221, Squillium_225
- Track 2 : Targaryen_221
- Track 3 : Cadmus_219, Daubenski_215
- Track 4 : Marsus_224
- Track 5 : Tribute_218, PacManQ_218, EGole_226, Sushi23_222, Lululemon_218, HangryHippo_220, Teutsch_221, Watermoore_221, BlueOtter_220, Coogler_219, Samisti12_226, Leo04_222, Scheme_225, Cross_221, Cursive_224, Pepperwood_222, Larnav_221
- Track 6 : LilSaint_223, Anedea_235, Riptide_223
- Track 7 : Warpy_225, Evy_212, Jay2Jay_227
- Track 8 : MulchMansion_225, Angela_224, Mildred21_231, LilMartin_221
- Track 9 : Shuckle_220
- Track 10 : Bmoc_226
- Track 11 : Stanimal_231, Sollertia_232, LukeCage_237, BoomerJR_231, AngryGiraffe_231, Mugiwara_241, Yaboi_236, Genie2_231
- Track 12 : PumpkinSpice_237, Tomas_234, MindFlayer_227, Brizzy_233, Jollison_231, Rikishi_235, Spilled_241, Wipeout_224, SaltySpittoon_234, Spelly_239, Gibbi_242, Amabiko_238, AcciDwight_242, JimJam_241, Bordeaux_232, Quarant19_234, Birchlyn_233, Karimac_234, CeilingFan_238, IchabodCrane_228, Battuta_232, TomSawyer_238, KentuckyRacer_240, Starbow_231
- Track 13 : Elmer_242, Wofford_234
- Track 14 : StarPlatinum_241
- Track 15 : Enygma_241
- Track 16 : Karp_166, Kenrey_179, Comrade_169, Belfort_172, Westy_174, Francob_173, Stigma_170, SparkleGoddess_172, Moab_174, Phredrick_177, Patelgo_175
- Track 17 : Emma1919_177, DeluluLabubu_180, Jada_175, Forrest_178, Maupel_177, Gilson_176, MeganTheeKilla_176
- Track 18 : Sham_165, TunaTartare_172
- Track 19 : Faust_165, SeresaTree_167
- Track 20 : Annadreamy_160, Limpid_167
- Track 21 : Beuffert_166
- Track 22 : Blueeyedbeauty_168
- Track 23 : Muntaha_142, Wakanda_141, Chaewon_138
- Track 24 : Circinus_135, BillNye_134

- Track 25 : Grayson_201, Peregrin_199
- Track 26 : Weasels2_204
- Track 27 : Trina_221
- Track 28 : NiceHouse_217
- Track 29 : Nova53_219
- Track 30 : Dorin_207, Francesca_208

Summary of Final Annotations (See graph section above for start numbers):

The start number called the most often in the published annotations is 11, it was called in 102 of the 114 non-draft genes in the pham.

Genes that call this "Most Annotated" start:

- AcciDwight_242, Amabiko_238, Anedea_235, Angela_224, AngryGiraffe_231, Annadreamy_160, Bartholomune_222, Battuta_232, Belfort_172, Beuffert_166, Birchlyn_233, BlueOtter_220, Blueeyedbeauty_168, Bmoc_226, BoomerJR_231, Bordeaux_232, Braelyn_218, Brizzy_233, Cadmus_219, CeilingFan_238, Comrade_169, Coogler_219, Cross_221, Cursive_224, Daubenski_215, Davielle_221, DeluluLabubu_180, EGole_226, Eliot67_224, Elmer_242, Emma1919_177, Enygma_241, Evy_212, Faust_165, Forrest_178, Francob_173, FreddyDRoo_226, Genie2_231, Gibbi_242, Gilson_176, HangryHippo_220, IchabodCrane_228, Jada_175, Jay2Jay_227, JimJam_241, Jollison_231, Karimac_234, Karp_166, Kenrey_179, KentuckyRacer_240, Larnav_221, Leo04_222, Liandry_222, LilMartin_221, LilSaint_223, Limpid_167, LukeCage_237, Lululemon_218, Marsus_224, Maupel_177, MeganTheeKilla_176, Mildred21_231, MindFlayer_227, Moab_174, Mugiwara_241, MulchMansion_225, Navo_216, NootNoot_219, PacManQ_218, Paradiddles_214, Patelgo_175, Pepperwood_222, Persimmon_225, Phredrick_177, PinkiePie_222, PumpkinSpice_237, Quarant19_234, Rikishi_235, Riptide_223, SaltySpittoon_234, Samisti12_226, Scheme_225, SeresaTree_167, Sham_165, Shuckle_220, Sollertia_232, SparkleGoddess_172, Spelly_239, Spilled_241, Squillium_225, Stanimal_231, StarPlatinum_241, Starbow_231, Stigma_170, Sushi23_222, Targaryen_221, Teutsch_221, TomSawyer_238, Tomas_234, Tribute_218, TunaTartare_172, Warpy_225, Watermoore_221, Westy_174, WhereRU_221, Wipeout_224, Wofford_234, Yaboi_236,

Genes that have the "Most Annotated" start but do not call it:

-

Genes that do not have the "Most Annotated" start:

- BillNye_134, Chaewon_138, Circinus_135, Dorin_207, Francesca_208, Grayson_201, Muntaha_142, NiceHouse_217, Nova53_219, Peregrin_199, Trina_221, Wakanda_141, Weasels2_204,

Summary by start number:

Start 8:

- Found in 1 of 121 (0.8%) of genes in pham
- Manual Annotations of this start: 1 of 114
- Called 100.0% of time when present

- Phage (with cluster) where this start called: Nova53_219 (CG),

Start 10:

- Found in 5 of 121 (4.1%) of genes in pham
- Manual Annotations of this start: 4 of 114
- Called 100.0% of time when present
- Phage (with cluster) where this start called: BillNye_134 (BK2), Chaewon_138 (BK2), Circinus_135 (BK2), Muntaha_142 (BK2), Wakanda_141 (BK2),

Start 11:

- Found in 108 of 121 (89.3%) of genes in pham
- Manual Annotations of this start: 102 of 114
- Called 100.0% of time when present
- Phage (with cluster) where this start called: AcciDwight_242 (BE2), Amabiko_238 (BE2), Anedea_235 (BE1), Angela_224 (BE1), AngryGiraffe_231 (BE2), Annadreamy_160 (BK1), Bartholomune_222 (BE1), Battuta_232 (BE2), Belfort_172 (BK1), Beuffert_166 (BK1), Birchlyn_233 (BE2), BlueOtter_220 (BE1), Blueeyedbeauty_168 (BK1), Bmoc_226 (BE1), BoomerJR_231 (BE2), Bordeaux_232 (BE2), Braelyn_218 (BE1), Brizzy_233 (BE2), Cadmus_219 (BE1), CeilingFan_238 (BE2), Comrade_169 (BK1), Coogler_219 (BE1), Cross_221 (BE1), Cursive_224 (BE1), Daubenski_215 (BE1), Davielle_221 (BE1), DeluluLabubu_180 (BK1), EGole_226 (BE1), Eliot67_224 (BE1), Elmer_242 (BE2), Emma1919_177 (BK1), Enygma_241 (BE2), Evy_212 (BE1), Faust_165 (BK1), Forrest_178 (BK1), Francob_173 (BK1), FreddyDRoo_226 (BE1), Genie2_231 (BE2), Gibbi_242 (BE2), Gilson_176 (BK1), HangryHippo_220 (BE1), IchabodCrane_228 (BE2), Jada_175 (BK1), Jay2Jay_227 (BE1), JimJam_241 (BE2), Jollison_231 (BE2), Karimac_234 (BE2), Karp_166 (BK1), Kenrey_179 (BK1), KentuckyRacer_240 (BE2), Larnav_221 (BE1), Leo04_222 (BE1), Liandry_222 (BE1), LilMartin_221 (BE1), LilSaint_223 (BE1), Limpid_167 (BK1), LukeCage_237 (BE2), Lululemon_218 (BE1), Marsus_224 (BE1), Maupel_177 (BK1), MeganTheeKilla_176 (BK1), Mildred21_231 (BE1), MindFlayer_227 (BE2), Moab_174 (BK1), Mugiwara_241 (BE2), MulchMansion_225 (BE1), Navo_216 (BE1), NootNoot_219 (BE1), PacManQ_218 (BE1), Paradiddles_214 (BE1), Patelgo_175 (BK1), Pepperwood_222 (BE1), Persimmon_225 (BE1), Phredrick_177 (BK1), PinkiePie_222 (BE1), PumpkinSpice_237 (BE2), Quarant19_234 (BE2), Rikishi_235 (BE2), Riptide_223 (BE1), SaltySpittoon_234 (BE2), Samisti12_226 (BE1), Scheme_225 (BE1), SeresaTree_167 (BK1), Sham_165 (BK1), Shuckle_220 (BE1), Sollertia_232 (BE2), SparkleGoddess_172 (BK1), Spelly_239 (BE2), Spilled_241 (BE2), Squillium_225 (BE1), Stanimal_231 (BE2), StarPlatinum_241 (BE2), Starbow_231 (BE2), Stigma_170 (BK1), Sushi23_222 (BE1), Targaryen_221 (BE1), Teutsch_221 (BE1), TomSawyer_238 (BE2), Tomas_234 (BE2), Tribute_218 (BE1), TunaTartare_172 (BK1), Warpy_225 (BE1), Watermoore_221 (BE1), Westy_174 (BK1), WhereRU_221 (BE1), Wipeout_224 (BE2), Wofford_234 (BE2), Yaboi_236 (BE2),

Start 12:

- Found in 2 of 121 (1.7%) of genes in pham
- Manual Annotations of this start: 1 of 114
- Called 50.0% of time when present
- Phage (with cluster) where this start called: Trina_221 (CE),

Start 13:

- Found in 3 of 121 (2.5%) of genes in pham
- Manual Annotations of this start: 3 of 114

- Called 100.0% of time when present
- Phage (with cluster) where this start called: Dorin_207 (CG), Francesca_208 (CG), NiceHouse_217 (CE),

Start 14:

- Found in 3 of 121 (2.5%) of genes in pham
- Manual Annotations of this start: 3 of 114
- Called 100.0% of time when present
- Phage (with cluster) where this start called: Grayson_201 (CB), Peregrin_199 (CB), Weasels2_204 (CB),

Summary by clusters:

There are 7 clusters represented in this pham: CB, CG, CE, BK1, BK2, BE2, BE1,

Info for manual annotations of cluster BE1:

- Start number 11 was manually annotated 44 times for cluster BE1.

Info for manual annotations of cluster BE2:

- Start number 11 was manually annotated 34 times for cluster BE2.

Info for manual annotations of cluster BK1:

- Start number 11 was manually annotated 24 times for cluster BK1.

Info for manual annotations of cluster BK2:

- Start number 10 was manually annotated 4 times for cluster BK2.

Info for manual annotations of cluster CB:

- Start number 14 was manually annotated 3 times for cluster CB.

Info for manual annotations of cluster CE:

- Start number 12 was manually annotated 1 time for cluster CE.
- Start number 13 was manually annotated 1 time for cluster CE.

Info for manual annotations of cluster CG:

- Start number 8 was manually annotated 1 time for cluster CG.
- Start number 13 was manually annotated 2 times for cluster CG.

Gene Information:

Gene: AcciDwight_242 Start: 111042, Stop: 111281, Start Num: 11

Candidate Starts for AcciDwight_242:

(Start: 11 @111042 has 102 MA's), (26, 111228),

Gene: Amabiko_238 Start: 110860, Stop: 111099, Start Num: 11

Candidate Starts for Amabiko_238:

(Start: 11 @110860 has 102 MA's), (26, 111046),

Gene: Anedea_235 Start: 114340, Stop: 114579, Start Num: 11

Candidate Starts for Anedea_235:

(Start: 11 @114340 has 102 MA's),

Gene: Angela_224 Start: 112143, Stop: 112382, Start Num: 11
Candidate Starts for Angela_224:
(1, 112008), (Start: 11 @112143 has 102 MA's), (18, 112212),

Gene: AngryGiraffe_231 Start: 110343, Stop: 110582, Start Num: 11
Candidate Starts for AngryGiraffe_231:
(Start: 11 @110343 has 102 MA's), (26, 110529),

Gene: Annadreamy_160 Start: 87923, Stop: 88159, Start Num: 11
Candidate Starts for Annadreamy_160:
(Start: 11 @87923 has 102 MA's), (19, 88010), (28, 88127),

Gene: Bartholomune_222 Start: 112320, Stop: 112559, Start Num: 11
Candidate Starts for Bartholomune_222:
(Start: 11 @112320 has 102 MA's), (15, 112347), (20, 112413),

Gene: Battuta_232 Start: 110175, Stop: 110414, Start Num: 11
Candidate Starts for Battuta_232:
(Start: 11 @110175 has 102 MA's), (26, 110361),

Gene: Belfort_172 Start: 93753, Stop: 93986, Start Num: 11
Candidate Starts for Belfort_172:
(Start: 11 @93753 has 102 MA's), (19, 93840), (27, 93945), (28, 93951),

Gene: Beuffert_166 Start: 92106, Stop: 92342, Start Num: 11
Candidate Starts for Beuffert_166:
(Start: 11 @92106 has 102 MA's), (19, 92193),

Gene: BillNye_134 Start: 83332, Stop: 83571, Start Num: 10
Candidate Starts for BillNye_134:
(4, 83272), (Start: 10 @83332 has 4 MA's), (16, 83374), (17, 83392), (24, 83497), (25, 83509),

Gene: Birchlyn_233 Start: 108108, Stop: 108347, Start Num: 11
Candidate Starts for Birchlyn_233:
(Start: 11 @108108 has 102 MA's), (26, 108294),

Gene: BlueOtter_220 Start: 112456, Stop: 112695, Start Num: 11
Candidate Starts for BlueOtter_220:
(Start: 11 @112456 has 102 MA's), (27, 112657),

Gene: Blueeyedbeauty_168 Start: 91690, Stop: 91926, Start Num: 11
Candidate Starts for Blueeyedbeauty_168:
(Start: 11 @91690 has 102 MA's), (17, 91744), (19, 91777), (28, 91894),

Gene: Bmoc_226 Start: 112584, Stop: 112823, Start Num: 11
Candidate Starts for Bmoc_226:
(Start: 11 @112584 has 102 MA's),

Gene: BoomerJR_231 Start: 110776, Stop: 111015, Start Num: 11
Candidate Starts for BoomerJR_231:
(Start: 11 @110776 has 102 MA's), (26, 110962),

Gene: Bordeaux_232 Start: 110758, Stop: 110997, Start Num: 11
Candidate Starts for Bordeaux_232:
(Start: 11 @110758 has 102 MA's), (26, 110944),

Gene: Braelyn_218 Start: 111967, Stop: 112206, Start Num: 11
Candidate Starts for Braelyn_218:
(Start: 11 @111967 has 102 MA's), (15, 111994), (20, 112060),

Gene: Brizzy_233 Start: 111286, Stop: 111525, Start Num: 11
Candidate Starts for Brizzy_233:
(Start: 11 @111286 has 102 MA's), (26, 111472),

Gene: Cadmus_219 Start: 113265, Stop: 113504, Start Num: 11
Candidate Starts for Cadmus_219:
(4, 113199), (6, 113217), (Start: 11 @113265 has 102 MA's),

Gene: CeilingFan_238 Start: 111553, Stop: 111792, Start Num: 11
Candidate Starts for CeilingFan_238:
(Start: 11 @111553 has 102 MA's), (26, 111739),

Gene: Chaewon_138 Start: 83310, Stop: 83549, Start Num: 10
Candidate Starts for Chaewon_138:
(Start: 10 @83310 has 4 MA's), (16, 83352), (17, 83370), (24, 83475),

Gene: Circinus_135 Start: 83300, Stop: 83539, Start Num: 10
Candidate Starts for Circinus_135:
(4, 83240), (Start: 10 @83300 has 4 MA's), (16, 83342), (17, 83360), (24, 83465), (25, 83477),

Gene: Comrade_169 Start: 93955, Stop: 94188, Start Num: 11
Candidate Starts for Comrade_169:
(Start: 11 @93955 has 102 MA's), (19, 94042), (27, 94147), (28, 94153),

Gene: Coogler_219 Start: 112881, Stop: 113120, Start Num: 11
Candidate Starts for Coogler_219:
(Start: 11 @112881 has 102 MA's), (27, 113082),

Gene: Cross_221 Start: 113101, Stop: 113340, Start Num: 11
Candidate Starts for Cross_221:
(Start: 11 @113101 has 102 MA's), (27, 113302),

Gene: Cursive_224 Start: 112784, Stop: 113023, Start Num: 11
Candidate Starts for Cursive_224:
(Start: 11 @112784 has 102 MA's), (27, 112985),

Gene: Daubenski_215 Start: 113166, Stop: 113405, Start Num: 11
Candidate Starts for Daubenski_215:
(4, 113100), (6, 113118), (Start: 11 @113166 has 102 MA's),

Gene: Davielle_221 Start: 112365, Stop: 112604, Start Num: 11
Candidate Starts for Davielle_221:
(Start: 11 @112365 has 102 MA's), (15, 112392), (20, 112458),

Gene: DeluluLabubu_180 Start: 94978, Stop: 95211, Start Num: 11

Candidate Starts for DeluluLabubu_180:

(Start: 11 @94978 has 102 MA's), (18, 95044), (19, 95065), (22, 95104), (27, 95170), (28, 95176),

Gene: Dorin_207 Start: 111817, Stop: 112053, Start Num: 13

Candidate Starts for Dorin_207:

(Start: 13 @111817 has 3 MA's), (19, 111901), (26, 111991),

Gene: EGole_226 Start: 115292, Stop: 115531, Start Num: 11

Candidate Starts for EGole_226:

(Start: 11 @115292 has 102 MA's), (27, 115493),

Gene: Eliot67_224 Start: 112149, Stop: 112388, Start Num: 11

Candidate Starts for Eliot67_224:

(Start: 11 @112149 has 102 MA's), (15, 112176), (20, 112242),

Gene: Elmer_242 Start: 114351, Stop: 114590, Start Num: 11

Candidate Starts for Elmer_242:

(Start: 11 @114351 has 102 MA's), (26, 114537),

Gene: Emma1919_177 Start: 92997, Stop: 93230, Start Num: 11

Candidate Starts for Emma1919_177:

(Start: 11 @92997 has 102 MA's), (18, 93063), (19, 93084), (22, 93123), (27, 93189), (28, 93195),

Gene: Enygma_241 Start: 113561, Stop: 113800, Start Num: 11

Candidate Starts for Enygma_241:

(Start: 11 @113561 has 102 MA's), (26, 113747),

Gene: Evy_212 Start: 113275, Stop: 113514, Start Num: 11

Candidate Starts for Evy_212:

(Start: 11 @113275 has 102 MA's), (26, 113461),

Gene: Faust_165 Start: 93075, Stop: 93317, Start Num: 11

Candidate Starts for Faust_165:

(9, 93054), (Start: 11 @93075 has 102 MA's), (19, 93162), (27, 93273),

Gene: Forrest_178 Start: 94432, Stop: 94665, Start Num: 11

Candidate Starts for Forrest_178:

(Start: 11 @94432 has 102 MA's), (18, 94498), (19, 94519), (22, 94558), (27, 94624), (28, 94630),

Gene: Francesca_208 Start: 112469, Stop: 112705, Start Num: 13

Candidate Starts for Francesca_208:

(Start: 13 @112469 has 3 MA's), (19, 112553), (26, 112643),

Gene: Francob_173 Start: 92988, Stop: 93221, Start Num: 11

Candidate Starts for Francob_173:

(Start: 11 @92988 has 102 MA's), (19, 93075), (27, 93180), (28, 93186),

Gene: FreddyDRoo_226 Start: 112149, Stop: 112388, Start Num: 11

Candidate Starts for FreddyDRoo_226:

(Start: 11 @112149 has 102 MA's), (15, 112176), (20, 112242),

Gene: Genie2_231 Start: 110901, Stop: 111140, Start Num: 11

Candidate Starts for Genie2_231:

(Start: 11 @110901 has 102 MA's), (26, 111087),

Gene: Gibbi_242 Start: 111046, Stop: 111285, Start Num: 11

Candidate Starts for Gibbi_242:

(Start: 11 @111046 has 102 MA's), (26, 111232),

Gene: Gilson_176 Start: 92959, Stop: 93192, Start Num: 11

Candidate Starts for Gilson_176:

(Start: 11 @92959 has 102 MA's), (18, 93025), (19, 93046), (22, 93085), (27, 93151), (28, 93157),

Gene: Grayson_201 Start: 103227, Stop: 103415, Start Num: 14

Candidate Starts for Grayson_201:

(Start: 14 @103227 has 3 MA's), (29, 103410),

Gene: HangryHippo_220 Start: 112456, Stop: 112695, Start Num: 11

Candidate Starts for HangryHippo_220:

(Start: 11 @112456 has 102 MA's), (27, 112657),

Gene: IchabodCrane_228 Start: 110561, Stop: 110800, Start Num: 11

Candidate Starts for IchabodCrane_228:

(Start: 11 @110561 has 102 MA's), (26, 110747),

Gene: Jada_175 Start: 93125, Stop: 93358, Start Num: 11

Candidate Starts for Jada_175:

(Start: 11 @93125 has 102 MA's), (18, 93191), (19, 93212), (22, 93251), (27, 93317), (28, 93323),

Gene: Jay2Jay_227 Start: 113430, Stop: 113669, Start Num: 11

Candidate Starts for Jay2Jay_227:

(Start: 11 @113430 has 102 MA's), (26, 113616),

Gene: JimJam_241 Start: 112482, Stop: 112721, Start Num: 11

Candidate Starts for JimJam_241:

(Start: 11 @112482 has 102 MA's), (26, 112668),

Gene: Jollison_231 Start: 110692, Stop: 110931, Start Num: 11

Candidate Starts for Jollison_231:

(Start: 11 @110692 has 102 MA's), (26, 110878),

Gene: Karimac_234 Start: 110877, Stop: 111116, Start Num: 11

Candidate Starts for Karimac_234:

(Start: 11 @110877 has 102 MA's), (26, 111063),

Gene: Karp_166 Start: 93179, Stop: 93412, Start Num: 11

Candidate Starts for Karp_166:

(Start: 11 @93179 has 102 MA's), (19, 93266), (27, 93371), (28, 93377),

Gene: Kenrey_179 Start: 93992, Stop: 94225, Start Num: 11

Candidate Starts for Kenrey_179:

(Start: 11 @93992 has 102 MA's), (19, 94079), (27, 94184), (28, 94190),

Gene: KentuckyRacer_240 Start: 112397, Stop: 112636, Start Num: 11

Candidate Starts for KentuckyRacer_240:

(Start: 11 @112397 has 102 MA's), (26, 112583),

Gene: Larnav_221 Start: 112950, Stop: 113189, Start Num: 11
Candidate Starts for Larnav_221:
(Start: 11 @112950 has 102 MA's), (27, 113151),

Gene: Leo04_222 Start: 113482, Stop: 113721, Start Num: 11
Candidate Starts for Leo04_222:
(Start: 11 @113482 has 102 MA's), (27, 113683),

Gene: Liandry_222 Start: 112856, Stop: 113095, Start Num: 11
Candidate Starts for Liandry_222:
(Start: 11 @112856 has 102 MA's), (15, 112883), (20, 112949),

Gene: LilMartin_221 Start: 111507, Stop: 111746, Start Num: 11
Candidate Starts for LilMartin_221:
(1, 111372), (Start: 11 @111507 has 102 MA's), (18, 111576),

Gene: LilSaint_223 Start: 112712, Stop: 112951, Start Num: 11
Candidate Starts for LilSaint_223:
(Start: 11 @112712 has 102 MA's),

Gene: Limpid_167 Start: 93236, Stop: 93472, Start Num: 11
Candidate Starts for Limpid_167:
(Start: 11 @93236 has 102 MA's), (19, 93323), (28, 93440),

Gene: LukeCage_237 Start: 112722, Stop: 112961, Start Num: 11
Candidate Starts for LukeCage_237:
(Start: 11 @112722 has 102 MA's), (26, 112908),

Gene: Lululemon_218 Start: 111837, Stop: 112076, Start Num: 11
Candidate Starts for Lululemon_218:
(Start: 11 @111837 has 102 MA's), (27, 112038),

Gene: Marsus_224 Start: 113172, Stop: 113411, Start Num: 11
Candidate Starts for Marsus_224:
(1, 113037), (Start: 11 @113172 has 102 MA's),

Gene: Maupel_177 Start: 92959, Stop: 93192, Start Num: 11
Candidate Starts for Maupel_177:
(Start: 11 @92959 has 102 MA's), (18, 93025), (19, 93046), (22, 93085), (27, 93151), (28, 93157),

Gene: MeganTheeKilla_176 Start: 93028, Stop: 93261, Start Num: 11
Candidate Starts for MeganTheeKilla_176:
(Start: 11 @93028 has 102 MA's), (18, 93094), (19, 93115), (22, 93154), (27, 93220), (28, 93226),

Gene: Mildred21_231 Start: 111222, Stop: 111461, Start Num: 11
Candidate Starts for Mildred21_231:
(1, 111087), (Start: 11 @111222 has 102 MA's), (18, 111291),

Gene: MindFlayer_227 Start: 110077, Stop: 110316, Start Num: 11
Candidate Starts for MindFlayer_227:
(Start: 11 @110077 has 102 MA's), (26, 110263),

Gene: Moab_174 Start: 95462, Stop: 95701, Start Num: 11
Candidate Starts for Moab_174:
(Start: 11 @95462 has 102 MA's), (19, 95549), (27, 95660), (28, 95666),

Gene: Mugiwara_241 Start: 113260, Stop: 113499, Start Num: 11
Candidate Starts for Mugiwara_241:
(Start: 11 @113260 has 102 MA's), (26, 113446),

Gene: MulchMansion_225 Start: 113141, Stop: 113380, Start Num: 11
Candidate Starts for MulchMansion_225:
(1, 113006), (Start: 11 @113141 has 102 MA's), (18, 113210),

Gene: Muntaha_142 Start: 82281, Stop: 82520, Start Num: 10
Candidate Starts for Muntaha_142:
(Start: 10 @82281 has 4 MA's), (16, 82323), (17, 82341), (24, 82446),

Gene: Navo_216 Start: 111171, Stop: 111410, Start Num: 11
Candidate Starts for Navo_216:
(Start: 11 @111171 has 102 MA's), (15, 111198), (20, 111264),

Gene: NiceHouse_217 Start: 118286, Stop: 118510, Start Num: 13
Candidate Starts for NiceHouse_217:
(7, 118250), (Start: 13 @118286 has 3 MA's), (21, 118403), (29, 118484),

Gene: NootNoot_219 Start: 111701, Stop: 111940, Start Num: 11
Candidate Starts for NootNoot_219:
(Start: 11 @111701 has 102 MA's), (15, 111728), (20, 111794),

Gene: Nova53_219 Start: 116561, Stop: 116821, Start Num: 8
Candidate Starts for Nova53_219:
(2, 116474), (5, 116522), (Start: 8 @116561 has 1 MA's), (Start: 12 @116588 has 1 MA's), (19, 116672), (26, 116762),

Gene: PacManQ_218 Start: 111837, Stop: 112076, Start Num: 11
Candidate Starts for PacManQ_218:
(Start: 11 @111837 has 102 MA's), (27, 112038),

Gene: Paradiddles_214 Start: 114076, Stop: 114315, Start Num: 11
Candidate Starts for Paradiddles_214:
(Start: 11 @114076 has 102 MA's), (15, 114103), (20, 114169),

Gene: Patelgo_175 Start: 95920, Stop: 96159, Start Num: 11
Candidate Starts for Patelgo_175:
(Start: 11 @95920 has 102 MA's), (19, 96007), (27, 96118), (28, 96124),

Gene: Pepperwood_222 Start: 113153, Stop: 113392, Start Num: 11
Candidate Starts for Pepperwood_222:
(Start: 11 @113153 has 102 MA's), (27, 113354),

Gene: Peregrin_199 Start: 103629, Stop: 103817, Start Num: 14
Candidate Starts for Peregrin_199:
(Start: 14 @103629 has 3 MA's), (29, 103812),

Gene: Persimmon_225 Start: 112189, Stop: 112428, Start Num: 11
Candidate Starts for Persimmon_225:
(Start: 11 @112189 has 102 MA's), (15, 112216), (20, 112282),

Gene: Phredrick_177 Start: 92623, Stop: 92856, Start Num: 11
Candidate Starts for Phredrick_177:
(Start: 11 @92623 has 102 MA's), (19, 92710), (27, 92815), (28, 92821),

Gene: PinkiePie_222 Start: 112856, Stop: 113095, Start Num: 11
Candidate Starts for PinkiePie_222:
(Start: 11 @112856 has 102 MA's), (15, 112883), (20, 112949),

Gene: PumpkinSpice_237 Start: 111298, Stop: 111537, Start Num: 11
Candidate Starts for PumpkinSpice_237:
(Start: 11 @111298 has 102 MA's), (26, 111484),

Gene: Quaran19_234 Start: 110739, Stop: 110978, Start Num: 11
Candidate Starts for Quaran19_234:
(Start: 11 @110739 has 102 MA's), (26, 110925),

Gene: Rikishi_235 Start: 111020, Stop: 111259, Start Num: 11
Candidate Starts for Rikishi_235:
(Start: 11 @111020 has 102 MA's), (26, 111206),

Gene: Riptide_223 Start: 111870, Stop: 112109, Start Num: 11
Candidate Starts for Riptide_223:
(Start: 11 @111870 has 102 MA's),

Gene: SaltySpittoon_234 Start: 110281, Stop: 110520, Start Num: 11
Candidate Starts for SaltySpittoon_234:
(Start: 11 @110281 has 102 MA's), (26, 110467),

Gene: Samisti12_226 Start: 114747, Stop: 114986, Start Num: 11
Candidate Starts for Samisti12_226:
(Start: 11 @114747 has 102 MA's), (27, 114948),

Gene: Scheme_225 Start: 114392, Stop: 114631, Start Num: 11
Candidate Starts for Scheme_225:
(Start: 11 @114392 has 102 MA's), (27, 114593),

Gene: SeresaTree_167 Start: 92457, Stop: 92699, Start Num: 11
Candidate Starts for SeresaTree_167:
(9, 92436), (Start: 11 @92457 has 102 MA's), (19, 92544), (27, 92655),

Gene: Sham_165 Start: 94074, Stop: 94316, Start Num: 11
Candidate Starts for Sham_165:
(9, 94053), (Start: 11 @94074 has 102 MA's), (16, 94110), (19, 94161), (27, 94272),

Gene: Shuckle_220 Start: 113281, Stop: 113520, Start Num: 11
Candidate Starts for Shuckle_220:
(Start: 11 @113281 has 102 MA's),

Gene: Sollertia_232 Start: 110890, Stop: 111129, Start Num: 11

Candidate Starts for Sollertia_232:
(Start: 11 @110890 has 102 MA's), (26, 111076),

Gene: SparkleGoddess_172 Start: 94163, Stop: 94396, Start Num: 11
Candidate Starts for SparkleGoddess_172:
(Start: 11 @94163 has 102 MA's), (19, 94250), (27, 94355), (28, 94361),

Gene: Spelly_239 Start: 110210, Stop: 110449, Start Num: 11
Candidate Starts for Spelly_239:
(Start: 11 @110210 has 102 MA's), (26, 110396),

Gene: Spilled_241 Start: 111414, Stop: 111653, Start Num: 11
Candidate Starts for Spilled_241:
(Start: 11 @111414 has 102 MA's), (26, 111600),

Gene: Squillium_225 Start: 112858, Stop: 113097, Start Num: 11
Candidate Starts for Squillium_225:
(Start: 11 @112858 has 102 MA's), (15, 112885), (20, 112951),

Gene: Stanimal_231 Start: 111262, Stop: 111501, Start Num: 11
Candidate Starts for Stanimal_231:
(Start: 11 @111262 has 102 MA's), (26, 111448),

Gene: StarPlatinum_241 Start: 113222, Stop: 113461, Start Num: 11
Candidate Starts for StarPlatinum_241:
(3, 113150), (Start: 11 @113222 has 102 MA's), (26, 113408),

Gene: Starbow_231 Start: 110254, Stop: 110493, Start Num: 11
Candidate Starts for Starbow_231:
(Start: 11 @110254 has 102 MA's), (26, 110440),

Gene: Stigma_170 Start: 94400, Stop: 94633, Start Num: 11
Candidate Starts for Stigma_170:
(Start: 11 @94400 has 102 MA's), (19, 94487), (27, 94592), (28, 94598),

Gene: Sushi23_222 Start: 113787, Stop: 114026, Start Num: 11
Candidate Starts for Sushi23_222:
(Start: 11 @113787 has 102 MA's), (27, 113988),

Gene: Targaryen_221 Start: 113959, Stop: 114198, Start Num: 11
Candidate Starts for Targaryen_221:
(Start: 11 @113959 has 102 MA's),

Gene: Teutsch_221 Start: 113576, Stop: 113815, Start Num: 11
Candidate Starts for Teutsch_221:
(Start: 11 @113576 has 102 MA's), (27, 113777),

Gene: TomSawyer_238 Start: 112725, Stop: 112964, Start Num: 11
Candidate Starts for TomSawyer_238:
(Start: 11 @112725 has 102 MA's), (26, 112911),

Gene: Tomas_234 Start: 114656, Stop: 114895, Start Num: 11
Candidate Starts for Tomas_234:

(Start: 11 @114656 has 102 MA's), (26, 114842),

Gene: Tribute_218 Start: 113741, Stop: 113980, Start Num: 11

Candidate Starts for Tribute_218:

(Start: 11 @113741 has 102 MA's), (27, 113942),

Gene: Trina_221 Start: 117099, Stop: 117323, Start Num: 12

Candidate Starts for Trina_221:

(7, 117075), (Start: 12 @117099 has 1 MA's), (18, 117162), (23, 117234),

Gene: TunaTartare_172 Start: 95786, Stop: 96028, Start Num: 11

Candidate Starts for TunaTartare_172:

(9, 95765), (Start: 11 @95786 has 102 MA's), (16, 95822), (19, 95873), (27, 95984),

Gene: Wakanda_141 Start: 82223, Stop: 82462, Start Num: 10

Candidate Starts for Wakanda_141:

(Start: 10 @82223 has 4 MA's), (16, 82265), (17, 82283), (24, 82388),

Gene: Warpy_225 Start: 112868, Stop: 113107, Start Num: 11

Candidate Starts for Warpy_225:

(Start: 11 @112868 has 102 MA's), (26, 113054),

Gene: Watermoore_221 Start: 114099, Stop: 114338, Start Num: 11

Candidate Starts for Watermoore_221:

(Start: 11 @114099 has 102 MA's), (27, 114300),

Gene: Weasels2_204 Start: 106469, Stop: 106657, Start Num: 14

Candidate Starts for Weasels2_204:

(Start: 14 @106469 has 3 MA's),

Gene: Westy_174 Start: 94712, Stop: 94945, Start Num: 11

Candidate Starts for Westy_174:

(Start: 11 @94712 has 102 MA's), (19, 94799), (27, 94904), (28, 94910),

Gene: WhereRU_221 Start: 112350, Stop: 112589, Start Num: 11

Candidate Starts for WhereRU_221:

(Start: 11 @112350 has 102 MA's), (15, 112377), (20, 112443),

Gene: Wipeout_224 Start: 111677, Stop: 111916, Start Num: 11

Candidate Starts for Wipeout_224:

(Start: 11 @111677 has 102 MA's), (26, 111863),

Gene: Wofford_234 Start: 113965, Stop: 114204, Start Num: 11

Candidate Starts for Wofford_234:

(Start: 11 @113965 has 102 MA's), (26, 114151),

Gene: Yaboi_236 Start: 110825, Stop: 111064, Start Num: 11

Candidate Starts for Yaboi_236:

(Start: 11 @110825 has 102 MA's), (26, 111011),