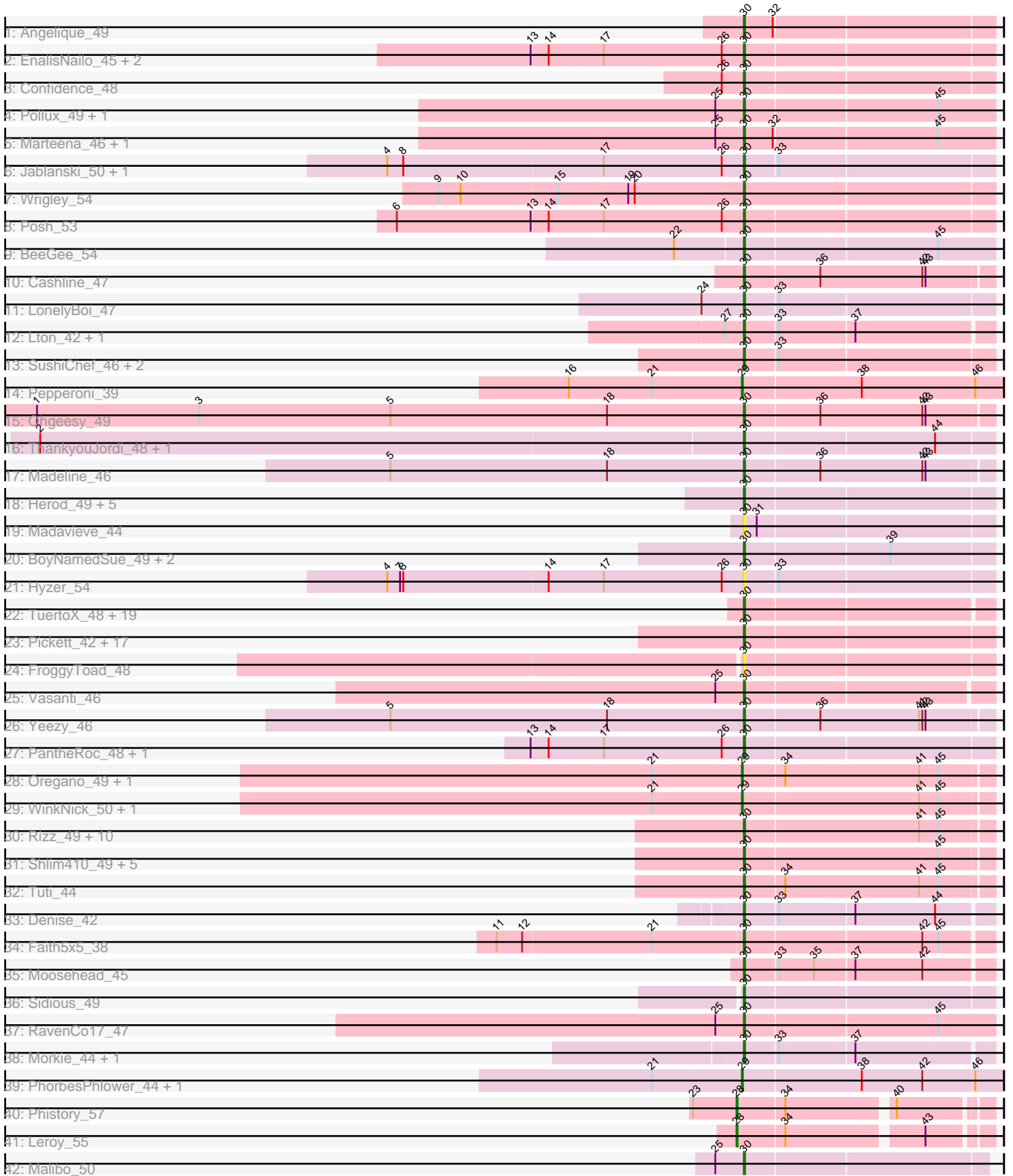


Pham 301207



Note: Tracks are now grouped by subcluster and scaled. Switching in subcluster is indicated by changes in track color. Track scale is now set by default to display the region 30 bp upstream of start 1 to 30 bp downstream of the last possible start. If this default region is judged to be packed too tightly with annotated starts, the track will be further scaled to only show that region of the ORF with annotated starts. This action will be indicated by adding "Zoomed" to the title. For starts, yellow indicates the location of called starts comprised solely of Glimmer/GeneMark auto-annotations, green indicates the location of called starts with at least 1 manual gene annotation.

Pham 301207 Report

This analysis was run 06/08/26 on database version 649.

Pham number 301207 has 114 members, 9 are drafts.

Phages represented in each track:

- Track 1 : Angelique_49
- Track 2 : EnalisNailo_45, Bradissa_46, Lilas_48
- Track 3 : Confidence_48
- Track 4 : Pollux_49, Floral_47
- Track 5 : Marteena_46, EMsquaredA_47
- Track 6 : Jablanski_50, Pytheas_50
- Track 7 : Wrigley_54
- Track 8 : Posh_53
- Track 9 : BeeGee_54
- Track 10 : Cashline_47
- Track 11 : LonelyBoi_47
- Track 12 : Lton_42, Lucky10_43
- Track 13 : SushiChef_46, Maridalia_50, Bunnybear_42
- Track 14 : Pepperoni_39
- Track 15 : Ohgeesy_49
- Track 16 : ThankyouJordi_48, WelcomeAyanna_48
- Track 17 : Madeline_46
- Track 18 : Herod_49, Eviarto_50, Nymphadora_50, BatStarr_49, TimTam_50, Hugley_46
- Track 19 : Madavieve_44
- Track 20 : BoyNamedSue_49, AlumE_49, Agueybana_51
- Track 21 : Hyzer_54
- Track 22 : TuertoX_48, Bosnia_50, Lamberg_44, Sproutie_48, Bjanes7_45, GemG_48, Ebert_50, JCole_46, Savage_48, Clap_48, Matteo_41, Jalleen_48, Nettuno_44, Yinzer_48, Sahara_47, Whiteclaw_48, Haley23_48, Gizermo_48, Mocha12_48, Cynthia_48
- Track 23 : Pickett_42, Manasvini_50, Polly_46, Yeet412_44, LordFarquaad_46, Eudoria_49, Trumpet_49, Zirinka_46, EdnaMode_43, Zameen_49, SoilAssassin_44, Kita_50, Suscepit_49, Attis_44, Tayonia_49, Antonio_49, Neobush_49, Bialota_47
- Track 24 : FroggyToad_48
- Track 25 : Vasanti_46
- Track 26 : Yeezy_46
- Track 27 : PantheRoc_48, BaxterFox_49
- Track 28 : Oregano_49, Annalisa_46
- Track 29 : WinkNick_50, Dolores_49
- Track 30 : Rizz_49, Invectra_50, Beenie_42, Samman98_49, Powerball_46, Dorito_44, Thimann_46, Sekhmet_49, DobbysSock_41, MichaelScott_49, Clark_48

- Track 31 : Shlim410_49, Adora_48, Mcklovin_47, Hortense_51, Twinkle_50, Howe_51
- Track 32 : Tuti_44
- Track 33 : Denise_42
- Track 34 : Faith5x5_38
- Track 35 : Moosehead_45
- Track 36 : Sidious_49
- Track 37 : RavenCo17_47
- Track 38 : Morkie_44, OneDirection_39
- Track 39 : PhorbesPhlower_44, InLimbo_44
- Track 40 : Phistory_57
- Track 41 : Leroy_55
- Track 42 : Malibo_50

Summary of Final Annotations (See graph section above for start numbers):

The start number called the most often in the published annotations is 30, it was called in 97 of the 105 non-draft genes in the pham.

Genes that call this "Most Annotated" start:

- Adora_48, Agueybana_51, AlumE_49, Angelique_49, Antonio_49, Attis_44, BatStarr_49, BaxterFox_49, BeeGee_54, Beenie_42, Bialota_47, Bjanes7_45, Bosnia_50, BoyNamedSue_49, Bradissa_46, Bunnybear_42, Cashline_47, Clap_48, Clark_48, Confidence_48, Cynthia_48, Denise_42, DobbysSock_41, Dorito_44, EMSquaredA_47, Ebert_50, EdnaMode_43, EnalisNailo_45, Eudoria_49, Eviarto_50, Faith5x5_38, Floral_47, FroggyToad_48, GemG_48, Gizermo_48, Haley23_48, Herod_49, Hortense_51, Howe_51, Hugley_46, Hyzer_54, Invecetra_50, JCole_46, Jablanski_50, Jalleen_48, Kita_50, Lamberg_44, Lilas_48, LonelyBoi_47, LordFarquaad_46, Lton_42, Lucky10_43, Madavieve_44, Madeline_46, Malibo_50, Manasvini_50, Maridalia_50, Marteena_46, Matteo_41, Mcklovin_47, MichaelScott_49, Mocha12_48, Moosehead_45, Morkie_44, Neobush_49, Nettuno_44, Nymphadora_50, Ohgeesy_49, OneDirection_39, PantheRoc_48, Pickett_42, Pollux_49, Polly_46, Posh_53, Powerball_46, Pytheas_50, RavenCo17_47, Rizz_49, Sahara_47, Samman98_49, Savage_48, Sekhmet_49, Shlim410_49, Sidious_49, SoilAssassin_44, Sproutie_48, Suscepit_49, SushiChef_46, Tayonia_49, ThankyouJordi_48, Thimann_46, TimTam_50, Trumpet_49, TuertoX_48, Tuti_44, Twinkle_50, Vasanti_46, WelcomeAyanna_48, Whiteclaw_48, Wrigley_54, Yeet412_44, Yeezy_46, Yinzer_48, Zameen_49, Zirinka_46,

Genes that have the "Most Annotated" start but do not call it:

-

Genes that do not have the "Most Annotated" start:

- Annalisa_46, Dolores_49, InLimbo_44, Leroy_55, Oregano_49, Pepperoni_39, Phistory_57, PhorbesPhlower_44, WinkNick_50,

Summary by start number:

Start 28:

- Found in 2 of 114 (1.8%) of genes in pham
- Manual Annotations of this start: 2 of 105
- Called 100.0% of time when present
- Phage (with cluster) where this start called: Leroy_55 (DN1), Phistory_57 (DN1),

Start 29:

- Found in 7 of 114 (6.1%) of genes in pham
- Manual Annotations of this start: 6 of 105
- Called 100.0% of time when present
- Phage (with cluster) where this start called: Annalisa_46 (CZ4), Dolores_49 (CZ4), InLimbo_44 (DH), Oregano_49 (CZ4), Pepperoni_39 (CZ), PhorbesPhlower_44 (DH), WinkNick_50 (CZ4),

Start 30:

- Found in 105 of 114 (92.1%) of genes in pham
- Manual Annotations of this start: 97 of 105
- Called 100.0% of time when present
- Phage (with cluster) where this start called: Adora_48 (CZ4), Agueybana_51 (CZ1), AlumE_49 (CZ1), Angelique_49 (CY1), Antonio_49 (CZ1), Attis_44 (CZ2), BatStarr_49 (CZ1), BaxterFox_49 (CZ3), BeeGee_54 (CY5), Beenie_42 (CZ4), Bialota_47 (CZ1), Bjanes7_45 (CZ2), Bosnia_50 (CZ1), BoyNamedSue_49 (CZ1), Bradissa_46 (CY1), Bunnybear_42 (CZ), Cashline_47 (CY6), Clap_48 (CZ2), Clark_48 (CZ4), Confidence_48 (CY1), Cynthia_48 (CZ2), Denise_42 (CZ5), DobbysSock_41 (CZ4), Dorito_44 (CZ4), EMSquaredA_47 (CY1), Ebert_50 (CZ2), EdnaMode_43 (CZ2), EnalisNailo_45 (CY1), Eudoria_49 (CZ1), Eviarto_50 (CZ1), Faith5x5_38 (CZ6), Floral_47 (CY1), FroggyToad_48 (CZ2), GemG_48 (CZ2), Gizermo_48 (CZ2), Haley23_48 (CZ2), Herod_49 (CZ1), Hortense_51 (CZ4), Howe_51 (CZ4), Hugley_46 (CZ1), Hyzer_54 (CZ1), Invecetra_50 (CZ4), JCole_46 (CZ2), Jablanski_50 (CY3), Jalleen_48 (CZ2), Kita_50 (CZ1), Lamberg_44 (CZ2), Lilas_48 (CY1), LonelyBoi_47 (CY7), LordFarquaad_46 (CZ2), Lton_42 (CZ), Lucky10_43 (DH), Madavieve_44 (CZ1), Madeline_46 (CZ1), Malibo_50 (DW), Manasvini_50 (CZ1), Maridalia_50 (CZ1), Marteena_46 (CY1), Matteo_41 (CZ2), Mcklovin_47 (CZ4), MichaelScott_49 (CZ4), Mocha12_48 (CZ2), Moosehead_45 (CZ6), Morkie_44 (DH), Neobush_49 (CZ1), Nettuno_44 (CZ2), Nymphadora_50 (CZ1), Ohgeesy_49 (CZ), OneDirection_39 (CZ6), PantheRoc_48 (CZ3), Pickett_42 (CZ2), Pollux_49 (CY1), Polly_46 (CZ1), Posh_53 (CY4), Powerball_46 (CZ4), Pytheas_50 (CY3), RavenCo17_47 (CZ8), Rizz_49 (CZ4), Sahara_47 (CZ2), Samman98_49 (CZ4), Savage_48 (CZ2), Sekhmet_49 (CZ4), Shlim410_49 (CZ4), Sidious_49 (CZ7), SoilAssassin_44 (CZ2), Sproutie_48 (CZ2), Suscepit_49 (CZ1), SushiChef_46 (CZ), Tayonia_49 (CZ1), ThankyouJordi_48 (CZ1), Thimann_46 (CZ4), TimTam_50 (CZ1), Trumpet_49 (CZ1), TuertoX_48 (CZ2), Tuti_44 (CZ4), Twinkle_50 (CZ4), Vasanti_46 (CZ2), WelcomeAyanna_48 (CZ1), Whiteclaw_48 (CZ2), Wrigley_54 (CY4), Yeet412_44 (CZ2), Yeezy_46 (CZ3), Yinzer_48 (CZ2), Zameen_49 (CZ1), Zirinka_46 (CZ1),

Summary by clusters:

There are 18 clusters represented in this pham: CY3, CY1, CY7, CY5, DH, CY4, CZ2, CZ3, CZ1, CZ6, CZ7, CZ4, CZ5, CZ, DN1, CZ8, DW, CY6,

Info for manual annotations of cluster CY1:

- Start number 30 was manually annotated 9 times for cluster CY1.

Info for manual annotations of cluster CY3:

- Start number 30 was manually annotated 2 times for cluster CY3.

Info for manual annotations of cluster CY4:

- Start number 30 was manually annotated 2 times for cluster CY4.

Info for manual annotations of cluster CY5:

- Start number 30 was manually annotated 1 time for cluster CY5.

Info for manual annotations of cluster CY6:

- Start number 30 was manually annotated 1 time for cluster CY6.

Info for manual annotations of cluster CY7:

- Start number 30 was manually annotated 1 time for cluster CY7.

Info for manual annotations of cluster CZ:

- Start number 29 was manually annotated 1 time for cluster CZ.
- Start number 30 was manually annotated 3 times for cluster CZ.

Info for manual annotations of cluster CZ1:

- Start number 30 was manually annotated 25 times for cluster CZ1.

Info for manual annotations of cluster CZ2:

- Start number 30 was manually annotated 24 times for cluster CZ2.

Info for manual annotations of cluster CZ3:

- Start number 30 was manually annotated 3 times for cluster CZ3.

Info for manual annotations of cluster CZ4:

- Start number 29 was manually annotated 4 times for cluster CZ4.
- Start number 30 was manually annotated 17 times for cluster CZ4.

Info for manual annotations of cluster CZ5:

- Start number 30 was manually annotated 1 time for cluster CZ5.

Info for manual annotations of cluster CZ6:

- Start number 30 was manually annotated 3 times for cluster CZ6.

Info for manual annotations of cluster CZ7:

- Start number 30 was manually annotated 1 time for cluster CZ7.

Info for manual annotations of cluster CZ8:

- Start number 30 was manually annotated 1 time for cluster CZ8.

Info for manual annotations of cluster DH:

- Start number 29 was manually annotated 1 time for cluster DH.
- Start number 30 was manually annotated 2 times for cluster DH.

Info for manual annotations of cluster DN1:

- Start number 28 was manually annotated 2 times for cluster DN1.

Info for manual annotations of cluster DW:

- Start number 30 was manually annotated 1 time for cluster DW.

Gene Information:

Gene: Adora_48 Start: 37387, Stop: 37614, Start Num: 30

Candidate Starts for Adora_48:

(Start: 30 @37387 has 97 MA's), (45, 37567),

Gene: Agueybana_51 Start: 38410, Stop: 38637, Start Num: 30

Candidate Starts for Agueybana_51:

(Start: 30 @38410 has 97 MA's), (39, 38542),

Gene: AlumE_49 Start: 36910, Stop: 37137, Start Num: 30

Candidate Starts for AlumE_49:

(Start: 30 @36910 has 97 MA's), (39, 37042),

Gene: Angelique_49 Start: 38125, Stop: 38352, Start Num: 30

Candidate Starts for Angelique_49:

(Start: 30 @38125 has 97 MA's), (32, 38152),

Gene: Annalisa_46 Start: 34052, Stop: 34279, Start Num: 29

Candidate Starts for Annalisa_46:

(21, 33968), (Start: 29 @34052 has 6 MA's), (34, 34088), (41, 34214), (45, 34232),

Gene: Antonio_49 Start: 36183, Stop: 36410, Start Num: 30

Candidate Starts for Antonio_49:

(Start: 30 @36183 has 97 MA's),

Gene: Attis_44 Start: 33316, Stop: 33543, Start Num: 30

Candidate Starts for Attis_44:

(Start: 30 @33316 has 97 MA's),

Gene: BatStarr_49 Start: 38153, Stop: 38380, Start Num: 30

Candidate Starts for BatStarr_49:

(Start: 30 @38153 has 97 MA's),

Gene: BaxterFox_49 Start: 37705, Stop: 37932, Start Num: 30

Candidate Starts for BaxterFox_49:

(13, 37507), (14, 37522), (17, 37573), (26, 37684), (Start: 30 @37705 has 97 MA's),

Gene: BeeGee_54 Start: 37637, Stop: 37867, Start Num: 30

Candidate Starts for BeeGee_54:

(22, 37574), (Start: 30 @37637 has 97 MA's), (45, 37814),

Gene: Beenie_42 Start: 34798, Stop: 35025, Start Num: 30

Candidate Starts for Beenie_42:

(Start: 30 @34798 has 97 MA's), (41, 34960), (45, 34978),

Gene: Bialota_47 Start: 36815, Stop: 37042, Start Num: 30

Candidate Starts for Bialota_47:

(Start: 30 @36815 has 97 MA's),

Gene: Bjanest7_45 Start: 33494, Stop: 33718, Start Num: 30
Candidate Starts for Bjanest7_45:
(Start: 30 @33494 has 97 MA's),

Gene: Bosnia_50 Start: 39858, Stop: 40082, Start Num: 30
Candidate Starts for Bosnia_50:
(Start: 30 @39858 has 97 MA's),

Gene: BoyNamedSue_49 Start: 36910, Stop: 37137, Start Num: 30
Candidate Starts for BoyNamedSue_49:
(Start: 30 @36910 has 97 MA's), (39, 37042),

Gene: Bradissa_46 Start: 37251, Stop: 37478, Start Num: 30
Candidate Starts for Bradissa_46:
(13, 37053), (14, 37068), (17, 37119), (26, 37230), (Start: 30 @37251 has 97 MA's),

Gene: Bunnybear_42 Start: 34583, Stop: 34810, Start Num: 30
Candidate Starts for Bunnybear_42:
(Start: 30 @34583 has 97 MA's), (33, 34613),

Gene: Cashline_47 Start: 37401, Stop: 37628, Start Num: 30
Candidate Starts for Cashline_47:
(Start: 30 @37401 has 97 MA's), (36, 37470), (42, 37566), (43, 37569),

Gene: Clap_48 Start: 33673, Stop: 33897, Start Num: 30
Candidate Starts for Clap_48:
(Start: 30 @33673 has 97 MA's),

Gene: Clark_48 Start: 34615, Stop: 34842, Start Num: 30
Candidate Starts for Clark_48:
(Start: 30 @34615 has 97 MA's), (41, 34777), (45, 34795),

Gene: Confidence_48 Start: 35142, Stop: 35369, Start Num: 30
Candidate Starts for Confidence_48:
(26, 35121), (Start: 30 @35142 has 97 MA's),

Gene: Cynthia_48 Start: 33671, Stop: 33895, Start Num: 30
Candidate Starts for Cynthia_48:
(Start: 30 @33671 has 97 MA's),

Gene: Denise_42 Start: 31822, Stop: 32046, Start Num: 30
Candidate Starts for Denise_42:
(Start: 30 @31822 has 97 MA's), (33, 31852), (37, 31921), (44, 31996),

Gene: DobbysSock_41 Start: 33457, Stop: 33684, Start Num: 30
Candidate Starts for DobbysSock_41:
(Start: 30 @33457 has 97 MA's), (41, 33619), (45, 33637),

Gene: Dolores_49 Start: 35132, Stop: 35359, Start Num: 29
Candidate Starts for Dolores_49:
(21, 35048), (Start: 29 @35132 has 6 MA's), (41, 35294), (45, 35312),

Gene: Dorito_44 Start: 33102, Stop: 33329, Start Num: 30

Candidate Starts for Dorito_44:
(Start: 30 @33102 has 97 MA's), (41, 33264), (45, 33282),

Gene: EMSquaredA_47 Start: 36058, Stop: 36288, Start Num: 30
Candidate Starts for EMSquaredA_47:
(25, 36031), (Start: 30 @36058 has 97 MA's), (32, 36085), (45, 36235),

Gene: Ebert_50 Start: 33597, Stop: 33821, Start Num: 30
Candidate Starts for Ebert_50:
(Start: 30 @33597 has 97 MA's),

Gene: EdnaMode_43 Start: 32004, Stop: 32231, Start Num: 30
Candidate Starts for EdnaMode_43:
(Start: 30 @32004 has 97 MA's),

Gene: EnalisNailo_45 Start: 36785, Stop: 37012, Start Num: 30
Candidate Starts for EnalisNailo_45:
(13, 36587), (14, 36602), (17, 36653), (26, 36764), (Start: 30 @36785 has 97 MA's),

Gene: Eudoria_49 Start: 36183, Stop: 36410, Start Num: 30
Candidate Starts for Eudoria_49:
(Start: 30 @36183 has 97 MA's),

Gene: Eviarto_50 Start: 38128, Stop: 38355, Start Num: 30
Candidate Starts for Eviarto_50:
(Start: 30 @38128 has 97 MA's),

Gene: Faith5x5_38 Start: 29451, Stop: 29675, Start Num: 30
Candidate Starts for Faith5x5_38:
(11, 29223), (12, 29247), (21, 29367), (Start: 30 @29451 has 97 MA's), (42, 29613), (45, 29628),

Gene: Floral_47 Start: 37542, Stop: 37772, Start Num: 30
Candidate Starts for Floral_47:
(25, 37515), (Start: 30 @37542 has 97 MA's), (45, 37719),

Gene: FroggyToad_48 Start: 34354, Stop: 34581, Start Num: 30
Candidate Starts for FroggyToad_48:
(Start: 30 @34354 has 97 MA's),

Gene: GemG_48 Start: 33677, Stop: 33901, Start Num: 30
Candidate Starts for GemG_48:
(Start: 30 @33677 has 97 MA's),

Gene: Gizermo_48 Start: 33673, Stop: 33897, Start Num: 30
Candidate Starts for Gizermo_48:
(Start: 30 @33673 has 97 MA's),

Gene: Haley23_48 Start: 33673, Stop: 33897, Start Num: 30
Candidate Starts for Haley23_48:
(Start: 30 @33673 has 97 MA's),

Gene: Herod_49 Start: 38153, Stop: 38380, Start Num: 30
Candidate Starts for Herod_49:

(Start: 30 @38153 has 97 MA's),

Gene: Hortense_51 Start: 38742, Stop: 38969, Start Num: 30

Candidate Starts for Hortense_51:

(Start: 30 @38742 has 97 MA's), (45, 38922),

Gene: Howe_51 Start: 38742, Stop: 38969, Start Num: 30

Candidate Starts for Howe_51:

(Start: 30 @38742 has 97 MA's), (45, 38922),

Gene: Hugley_46 Start: 38152, Stop: 38379, Start Num: 30

Candidate Starts for Hugley_46:

(Start: 30 @38152 has 97 MA's),

Gene: Hyzer_54 Start: 39099, Stop: 39326, Start Num: 30

Candidate Starts for Hyzer_54:

(4, 38766), (7, 38778), (8, 38781), (14, 38916), (17, 38967), (26, 39078), (Start: 30 @39099 has 97 MA's), (33, 39129),

Gene: InLimbo_44 Start: 31243, Stop: 31482, Start Num: 29

Candidate Starts for InLimbo_44:

(21, 31159), (Start: 29 @31243 has 6 MA's), (38, 31351), (42, 31408), (46, 31456),

Gene: Invectra_50 Start: 36189, Stop: 36416, Start Num: 30

Candidate Starts for Invectra_50:

(Start: 30 @36189 has 97 MA's), (41, 36351), (45, 36369),

Gene: JCole_46 Start: 32691, Stop: 32915, Start Num: 30

Candidate Starts for JCole_46:

(Start: 30 @32691 has 97 MA's),

Gene: Jablanski_50 Start: 39144, Stop: 39371, Start Num: 30

Candidate Starts for Jablanski_50:

(4, 38811), (8, 38826), (17, 39012), (26, 39123), (Start: 30 @39144 has 97 MA's), (33, 39174),

Gene: Jalleen_48 Start: 33312, Stop: 33536, Start Num: 30

Candidate Starts for Jalleen_48:

(Start: 30 @33312 has 97 MA's),

Gene: Kita_50 Start: 36192, Stop: 36419, Start Num: 30

Candidate Starts for Kita_50:

(Start: 30 @36192 has 97 MA's),

Gene: Lamberg_44 Start: 32182, Stop: 32406, Start Num: 30

Candidate Starts for Lamberg_44:

(Start: 30 @32182 has 97 MA's),

Gene: Leroy_55 Start: 36252, Stop: 36467, Start Num: 28

Candidate Starts for Leroy_55:

(Start: 28 @36252 has 2 MA's), (34, 36294), (43, 36414),

Gene: Lilas_48 Start: 38496, Stop: 38723, Start Num: 30

Candidate Starts for Lilas_48:

(13, 38298), (14, 38313), (17, 38364), (26, 38475), (Start: 30 @38496 has 97 MA's),

Gene: LonelyBoi_47 Start: 38656, Stop: 38883, Start Num: 30

Candidate Starts for LonelyBoi_47:

(24, 38617), (Start: 30 @38656 has 97 MA's), (33, 38686),

Gene: LordFarquaad_46 Start: 33297, Stop: 33524, Start Num: 30

Candidate Starts for LordFarquaad_46:

(Start: 30 @33297 has 97 MA's),

Gene: Lton_42 Start: 29506, Stop: 29730, Start Num: 30

Candidate Starts for Lton_42:

(27, 29488), (Start: 30 @29506 has 97 MA's), (33, 29536), (37, 29605),

Gene: Lucky10_43 Start: 32224, Stop: 32448, Start Num: 30

Candidate Starts for Lucky10_43:

(27, 32206), (Start: 30 @32224 has 97 MA's), (33, 32254), (37, 32323),

Gene: Madavieve_44 Start: 35500, Stop: 35727, Start Num: 30

Candidate Starts for Madavieve_44:

(Start: 30 @35500 has 97 MA's), (31, 35512),

Gene: Madeline_46 Start: 36834, Stop: 37061, Start Num: 30

Candidate Starts for Madeline_46:

(5, 36504), (18, 36708), (Start: 30 @36834 has 97 MA's), (36, 36903), (42, 36999), (43, 37002),

Gene: Malibo_50 Start: 36835, Stop: 37056, Start Num: 30

Candidate Starts for Malibo_50:

(25, 36808), (Start: 30 @36835 has 97 MA's),

Gene: Manasvini_50 Start: 36207, Stop: 36434, Start Num: 30

Candidate Starts for Manasvini_50:

(Start: 30 @36207 has 97 MA's),

Gene: Maridalia_50 Start: 36329, Stop: 36556, Start Num: 30

Candidate Starts for Maridalia_50:

(Start: 30 @36329 has 97 MA's), (33, 36359),

Gene: Marteena_46 Start: 36058, Stop: 36288, Start Num: 30

Candidate Starts for Marteena_46:

(25, 36031), (Start: 30 @36058 has 97 MA's), (32, 36085), (45, 36235),

Gene: Matteo_41 Start: 31224, Stop: 31448, Start Num: 30

Candidate Starts for Matteo_41:

(Start: 30 @31224 has 97 MA's),

Gene: Mcklovin_47 Start: 40209, Stop: 40436, Start Num: 30

Candidate Starts for Mcklovin_47:

(Start: 30 @40209 has 97 MA's), (45, 40389),

Gene: MichaelScott_49 Start: 36092, Stop: 36319, Start Num: 30

Candidate Starts for MichaelScott_49:

(Start: 30 @36092 has 97 MA's), (41, 36254), (45, 36272),

Gene: Mocha12_48 Start: 33673, Stop: 33897, Start Num: 30

Candidate Starts for Mocha12_48:

(Start: 30 @33673 has 97 MA's),

Gene: Moosehead_45 Start: 30439, Stop: 30663, Start Num: 30

Candidate Starts for Moosehead_45:

(Start: 30 @30439 has 97 MA's), (33, 30469), (35, 30502), (37, 30538), (42, 30601),

Gene: Morkie_44 Start: 31328, Stop: 31552, Start Num: 30

Candidate Starts for Morkie_44:

(Start: 30 @31328 has 97 MA's), (33, 31358), (37, 31427),

Gene: Neobush_49 Start: 36177, Stop: 36404, Start Num: 30

Candidate Starts for Neobush_49:

(Start: 30 @36177 has 97 MA's),

Gene: Nettuno_44 Start: 32182, Stop: 32406, Start Num: 30

Candidate Starts for Nettuno_44:

(Start: 30 @32182 has 97 MA's),

Gene: Nymphadora_50 Start: 38152, Stop: 38379, Start Num: 30

Candidate Starts for Nymphadora_50:

(Start: 30 @38152 has 97 MA's),

Gene: Ohgeesy_49 Start: 37629, Stop: 37856, Start Num: 30

Candidate Starts for Ohgeesy_49:

(1, 36966), (3, 37119), (5, 37299), (18, 37503), (Start: 30 @37629 has 97 MA's), (36, 37698), (42, 37794), (43, 37797),

Gene: OneDirection_39 Start: 28942, Stop: 29166, Start Num: 30

Candidate Starts for OneDirection_39:

(Start: 30 @28942 has 97 MA's), (33, 28972), (37, 29041),

Gene: Oregano_49 Start: 34685, Stop: 34912, Start Num: 29

Candidate Starts for Oregano_49:

(21, 34601), (Start: 29 @34685 has 6 MA's), (34, 34721), (41, 34847), (45, 34865),

Gene: PantheRoc_48 Start: 36680, Stop: 36907, Start Num: 30

Candidate Starts for PantheRoc_48:

(13, 36482), (14, 36497), (17, 36548), (26, 36659), (Start: 30 @36680 has 97 MA's),

Gene: Pepperoni_39 Start: 30505, Stop: 30744, Start Num: 29

Candidate Starts for Pepperoni_39:

(16, 30343), (21, 30421), (Start: 29 @30505 has 6 MA's), (38, 30613), (46, 30718),

Gene: Phistory_57 Start: 36512, Stop: 36727, Start Num: 28

Candidate Starts for Phistory_57:

(23, 36473), (Start: 28 @36512 has 2 MA's), (34, 36554), (40, 36647),

Gene: PhorbesPhlower_44 Start: 30696, Stop: 30935, Start Num: 29

Candidate Starts for PhorbesPhlower_44:

(21, 30612), (Start: 29 @30696 has 6 MA's), (38, 30804), (42, 30861), (46, 30909),

Gene: Pickett_42 Start: 30480, Stop: 30707, Start Num: 30
Candidate Starts for Pickett_42:
(Start: 30 @30480 has 97 MA's),

Gene: Pollux_49 Start: 37542, Stop: 37772, Start Num: 30
Candidate Starts for Pollux_49:
(25, 37515), (Start: 30 @37542 has 97 MA's), (45, 37719),

Gene: Polly_46 Start: 35626, Stop: 35853, Start Num: 30
Candidate Starts for Polly_46:
(Start: 30 @35626 has 97 MA's),

Gene: Posh_53 Start: 38901, Stop: 39128, Start Num: 30
Candidate Starts for Posh_53:
(6, 38577), (13, 38703), (14, 38718), (17, 38769), (26, 38880), (Start: 30 @38901 has 97 MA's),

Gene: Powerball_46 Start: 34959, Stop: 35186, Start Num: 30
Candidate Starts for Powerball_46:
(Start: 30 @34959 has 97 MA's), (41, 35121), (45, 35139),

Gene: Pytheas_50 Start: 39143, Stop: 39370, Start Num: 30
Candidate Starts for Pytheas_50:
(4, 38810), (8, 38825), (17, 39011), (26, 39122), (Start: 30 @39143 has 97 MA's), (33, 39173),

Gene: RavenCo17_47 Start: 36363, Stop: 36593, Start Num: 30
Candidate Starts for RavenCo17_47:
(25, 36336), (Start: 30 @36363 has 97 MA's), (45, 36540),

Gene: Rizz_49 Start: 35401, Stop: 35628, Start Num: 30
Candidate Starts for Rizz_49:
(Start: 30 @35401 has 97 MA's), (41, 35563), (45, 35581),

Gene: Sahara_47 Start: 33420, Stop: 33644, Start Num: 30
Candidate Starts for Sahara_47:
(Start: 30 @33420 has 97 MA's),

Gene: Samman98_49 Start: 34718, Stop: 34945, Start Num: 30
Candidate Starts for Samman98_49:
(Start: 30 @34718 has 97 MA's), (41, 34880), (45, 34898),

Gene: Savage_48 Start: 33673, Stop: 33897, Start Num: 30
Candidate Starts for Savage_48:
(Start: 30 @33673 has 97 MA's),

Gene: Sekhmet_49 Start: 35618, Stop: 35845, Start Num: 30
Candidate Starts for Sekhmet_49:
(Start: 30 @35618 has 97 MA's), (41, 35780), (45, 35798),

Gene: Shlim410_49 Start: 38742, Stop: 38969, Start Num: 30
Candidate Starts for Shlim410_49:
(Start: 30 @38742 has 97 MA's), (45, 38922),

Gene: Sidious_49 Start: 37507, Stop: 37734, Start Num: 30
Candidate Starts for Sidious_49:
(Start: 30 @37507 has 97 MA's),

Gene: SoilAssassin_44 Start: 33315, Stop: 33542, Start Num: 30
Candidate Starts for SoilAssassin_44:
(Start: 30 @33315 has 97 MA's),

Gene: Sproutie_48 Start: 33673, Stop: 33897, Start Num: 30
Candidate Starts for Sproutie_48:
(Start: 30 @33673 has 97 MA's),

Gene: Suscepit_49 Start: 36184, Stop: 36411, Start Num: 30
Candidate Starts for Suscepit_49:
(Start: 30 @36184 has 97 MA's),

Gene: SushiChef_46 Start: 37097, Stop: 37324, Start Num: 30
Candidate Starts for SushiChef_46:
(Start: 30 @37097 has 97 MA's), (33, 37127),

Gene: Tayonia_49 Start: 36183, Stop: 36410, Start Num: 30
Candidate Starts for Tayonia_49:
(Start: 30 @36183 has 97 MA's),

Gene: ThankyouJordi_48 Start: 38028, Stop: 38255, Start Num: 30
Candidate Starts for ThankyouJordi_48:
(2, 37374), (Start: 30 @38028 has 97 MA's), (44, 38202),

Gene: Thimann_46 Start: 33983, Stop: 34210, Start Num: 30
Candidate Starts for Thimann_46:
(Start: 30 @33983 has 97 MA's), (41, 34145), (45, 34163),

Gene: TimTam_50 Start: 38152, Stop: 38379, Start Num: 30
Candidate Starts for TimTam_50:
(Start: 30 @38152 has 97 MA's),

Gene: Trumpet_49 Start: 36184, Stop: 36411, Start Num: 30
Candidate Starts for Trumpet_49:
(Start: 30 @36184 has 97 MA's),

Gene: TuertoX_48 Start: 33673, Stop: 33897, Start Num: 30
Candidate Starts for TuertoX_48:
(Start: 30 @33673 has 97 MA's),

Gene: Tuti_44 Start: 35433, Stop: 35660, Start Num: 30
Candidate Starts for Tuti_44:
(Start: 30 @35433 has 97 MA's), (34, 35469), (41, 35595), (45, 35613),

Gene: Twinkle_50 Start: 39801, Stop: 40028, Start Num: 30
Candidate Starts for Twinkle_50:
(Start: 30 @39801 has 97 MA's), (45, 39981),

Gene: Vasanti_46 Start: 32681, Stop: 32905, Start Num: 30

Candidate Starts for Vasanti_46:
(25, 32654), (Start: 30 @32681 has 97 MA's),

Gene: WelcomeAyanna_48 Start: 38175, Stop: 38402, Start Num: 30
Candidate Starts for WelcomeAyanna_48:
(2, 37521), (Start: 30 @38175 has 97 MA's), (44, 38349),

Gene: Whiteclaw_48 Start: 33673, Stop: 33897, Start Num: 30
Candidate Starts for Whiteclaw_48:
(Start: 30 @33673 has 97 MA's),

Gene: WinkNick_50 Start: 35055, Stop: 35282, Start Num: 29
Candidate Starts for WinkNick_50:
(21, 34971), (Start: 29 @35055 has 6 MA's), (41, 35217), (45, 35235),

Gene: Wrigley_54 Start: 38058, Stop: 38288, Start Num: 30
Candidate Starts for Wrigley_54:
(9, 37773), (10, 37794), (15, 37884), (19, 37950), (20, 37956), (Start: 30 @38058 has 97 MA's),

Gene: Yeet412_44 Start: 33316, Stop: 33543, Start Num: 30
Candidate Starts for Yeet412_44:
(Start: 30 @33316 has 97 MA's),

Gene: Yeezy_46 Start: 34678, Stop: 34905, Start Num: 30
Candidate Starts for Yeezy_46:
(5, 34348), (18, 34552), (Start: 30 @34678 has 97 MA's), (36, 34747), (41, 34840), (42, 34843), (43, 34846),

Gene: Yinzer_48 Start: 33673, Stop: 33897, Start Num: 30
Candidate Starts for Yinzer_48:
(Start: 30 @33673 has 97 MA's),

Gene: Zameen_49 Start: 36183, Stop: 36410, Start Num: 30
Candidate Starts for Zameen_49:
(Start: 30 @36183 has 97 MA's),

Gene: Zirinka_46 Start: 36803, Stop: 37030, Start Num: 30
Candidate Starts for Zirinka_46:
(Start: 30 @36803 has 97 MA's),