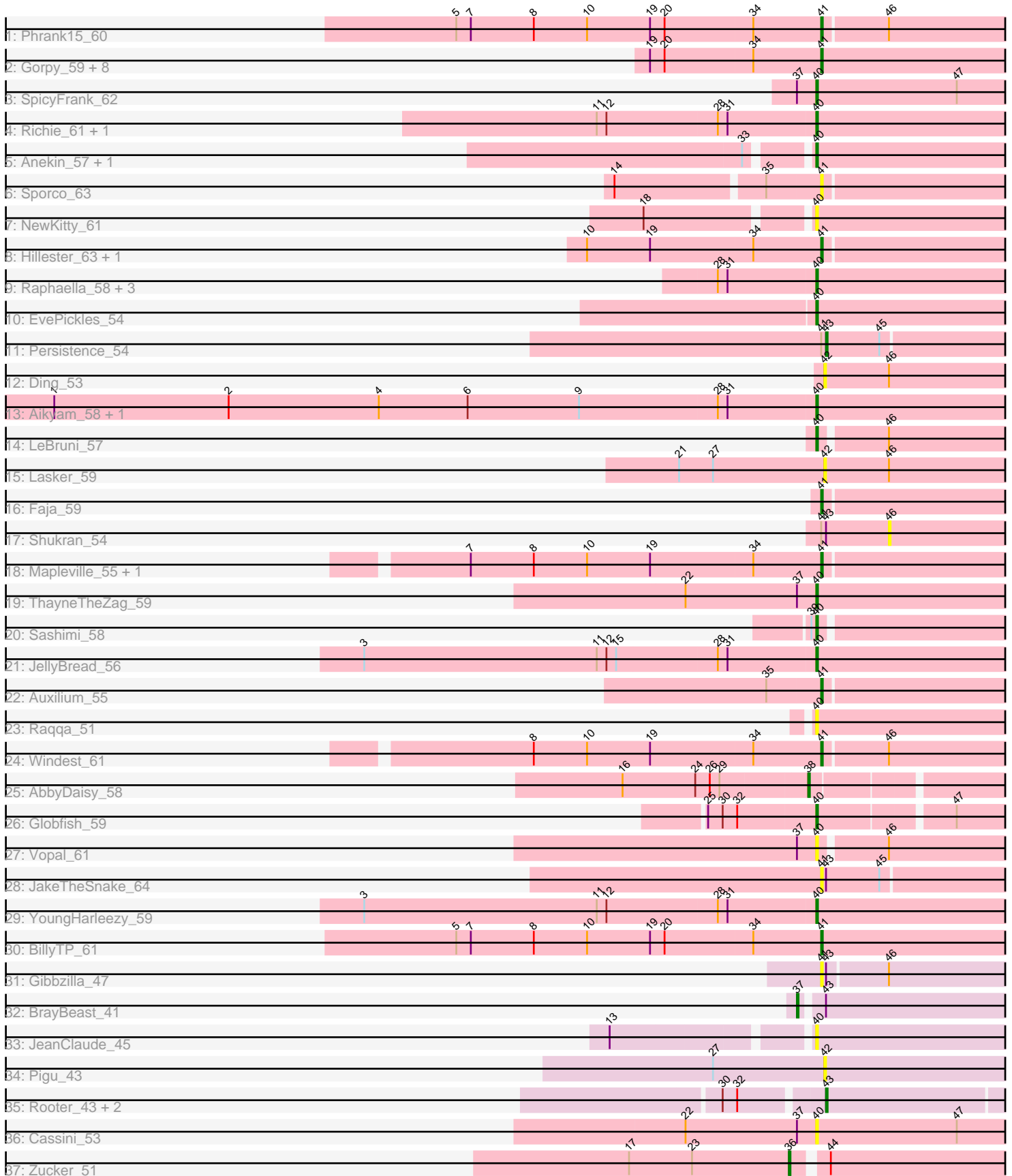


Pham 301428



Note: Tracks are now grouped by subcluster and scaled. Switching in subcluster is indicated by changes in track color. Track scale is now set by default to display the region 30 bp upstream of start 1 to 30 bp downstream of the last possible start. If this default region is judged to be packed too tightly with annotated starts, the track will be further scaled to only show that region of the ORF with annotated starts. This action will be indicated by adding "Zoomed" to the title. For starts, yellow indicates the location of called starts comprised solely of Glimmer/GeneMark auto-annotations, green indicates the location of called starts with at least 1 manual gene annotation.

Pham 301428 Report

This analysis was run 06/08/26 on database version 649.

Pham number 301428 has 55 members, 18 are drafts.

Phages represented in each track:

- Track 1 : Phrank15_60
- Track 2 : Gorpy_59, AdaS_55, Lawnathon_60, CookieBear_59, BasketStar_61, Isolde_58, Sakai_58, SonDevVon_63, BlueShadow_59
- Track 3 : SpicyFrank_62
- Track 4 : Richie_61, GumGum_58
- Track 5 : Anekin_57, BenchScraper_58
- Track 6 : Sporco_63
- Track 7 : NewKitty_61
- Track 8 : Hillester_63, RadFad_63
- Track 9 : Raphaella_58, Bhageatrice_60, MUWow_59, Kabloowy_59
- Track 10 : EvePickles_54
- Track 11 : Persistence_54
- Track 12 : Ding_53
- Track 13 : Aikyam_58, MaterMagnus_60
- Track 14 : LeBruni_57
- Track 15 : Lasker_59
- Track 16 : Faja_59
- Track 17 : Shukran_54
- Track 18 : Mapleville_55, MidnightRain_63
- Track 19 : ThayneTheZag_59
- Track 20 : Sashimi_58
- Track 21 : JellyBread_56
- Track 22 : Auxilium_55
- Track 23 : Raqqa_51
- Track 24 : Windest_61
- Track 25 : AbbyDaisy_58
- Track 26 : Globfish_59
- Track 27 : Vopal_61
- Track 28 : JakeTheSnake_64
- Track 29 : YoungHarleezy_59
- Track 30 : BillyTP_61
- Track 31 : Gibbzilla_47
- Track 32 : BrayBeast_41
- Track 33 : JeanClaude_45
- Track 34 : Pigu_43
- Track 35 : Rooter_43, Shoya_46, Sarge_40
- Track 36 : Cassini_53

- Track 37 : Zucker_51

Summary of Final Annotations (See graph section above for start numbers):

The start number called the most often in the published annotations is 41, it was called in 16 of the 37 non-draft genes in the pham.

Genes that call this "Most Annotated" start:

- AdaS_55, Auxilium_55, BasketStar_61, BillyTP_61, BlueShadow_59, CookieBear_59, Faja_59, Gibbzilla_47, Gorpy_59, Hillester_63, Isolde_58, JakeTheSnake_64, Lawnathon_60, Mapleville_55, MidnightRain_63, Phrank15_60, RadFad_63, Sakai_58, SonDevVon_63, Sporco_63, Windest_61,

Genes that have the "Most Annotated" start but do not call it:

- Persistence_54, Shukran_54,

Genes that do not have the "Most Annotated" start:

- AbbyDaisy_58, Aikyam_58, Anekin_57, BenchScraper_58, Bhageatrice_60, BrayBeast_41, Cassini_53, Ding_53, EvePickles_54, Globfish_59, GumGum_58, JeanClaude_45, JellyBread_56, Kabloowy_59, Lasker_59, LeBruni_57, MUWow_59, MaterMagnus_60, NewKitty_61, Pigu_43, Raphaella_58, Raqqa_51, Richie_61, Rooter_43, Sarge_40, Sashimi_58, Shoya_46, SpicyFrank_62, ThayneTheZag_59, Vopal_61, YoungHarleezy_59, Zucker_51,

Summary by start number:

Start 36:

- Found in 1 of 55 (1.8%) of genes in pham
- Manual Annotations of this start: 1 of 37
- Called 100.0% of time when present
- Phage (with cluster) where this start called: Zucker_51 (FN),

Start 37:

- Found in 5 of 55 (9.1%) of genes in pham
- Manual Annotations of this start: 1 of 37
- Called 20.0% of time when present
- Phage (with cluster) where this start called: BrayBeast_41 (FB),

Start 38:

- Found in 1 of 55 (1.8%) of genes in pham
- Manual Annotations of this start: 1 of 37
- Called 100.0% of time when present
- Phage (with cluster) where this start called: AbbyDaisy_58 (AY),

Start 40:

- Found in 23 of 55 (41.8%) of genes in pham
- Manual Annotations of this start: 15 of 37
- Called 100.0% of time when present
- Phage (with cluster) where this start called: Aikyam_58 (AY), Anekin_57 (AY), BenchScraper_58 (AY), Bhageatrice_60 (AY), Cassini_53 (FN), EvePickles_54 (AY),

Globfish_59 (AY), GumGum_58 (AY), JeanClaude_45 (FB), JellyBread_56 (AY), Kabloowy_59 (AY), LeBruni_57 (AY), MUWow_59 (AY), MaterMagnus_60 (AY), NewKitty_61 (AY), Raphaella_58 (AY), Raqqa_51 (AY), Richie_61 (AY), Sashimi_58 (AY), SpicyFrank_62 (AY), ThayneTheZag_59 (AY), Vopal_61 (AY), YoungHarleezy_59 (AY),

Start 41:

- Found in 23 of 55 (41.8%) of genes in pham
- Manual Annotations of this start: 16 of 37
- Called 91.3% of time when present
- Phage (with cluster) where this start called: AdaS_55 (AY), Auxilium_55 (AY), BasketStar_61 (AY), BillyTP_61 (AY), BlueShadow_59 (AY), CookieBear_59 (AY), Faja_59 (AY), Gibbzilla_47 (FB), Gorpy_59 (AY), Hillester_63 (AY), Isolde_58 (AY), JakeTheSnake_64 (AY), Lawnathon_60 (AY), Mapleville_55 (AY), MidnightRain_63 (AY), Phrank15_60 (AY), RadFad_63 (AY), Sakai_58 (AY), SonDevVon_63 (AY), Sporco_63 (AY), Windest_61 (AY),

Start 42:

- Found in 3 of 55 (5.5%) of genes in pham
- No Manual Annotations of this start.
- Called 100.0% of time when present
- Phage (with cluster) where this start called: Ding_53 (AY), Lasker_59 (AY), Pigu_43 (FB),

Start 43:

- Found in 8 of 55 (14.5%) of genes in pham
- Manual Annotations of this start: 3 of 37
- Called 50.0% of time when present
- Phage (with cluster) where this start called: Persistence_54 (AY), Rooter_43 (FB), Sarge_40 (FB), Shoya_46 (FB),

Start 46:

- Found in 8 of 55 (14.5%) of genes in pham
- No Manual Annotations of this start.
- Called 12.5% of time when present
- Phage (with cluster) where this start called: Shukran_54 (AY),

Summary by clusters:

There are 3 clusters represented in this pham: AY, FB, FN,

Info for manual annotations of cluster AY:

- Start number 38 was manually annotated 1 time for cluster AY.
- Start number 40 was manually annotated 15 times for cluster AY.
- Start number 41 was manually annotated 16 times for cluster AY.
- Start number 43 was manually annotated 1 time for cluster AY.

Info for manual annotations of cluster FB:

- Start number 37 was manually annotated 1 time for cluster FB.
- Start number 43 was manually annotated 2 times for cluster FB.

Info for manual annotations of cluster FN:

- Start number 36 was manually annotated 1 time for cluster FN.

Gene Information:

Gene: AbbyDaisy_58 Start: 34196, Stop: 34399, Start Num: 38

Candidate Starts for AbbyDaisy_58:

(16, 34085), (24, 34130), (26, 34139), (29, 34145), (Start: 38 @34196 has 1 MA's),

Gene: AdaS_55 Start: 32061, Stop: 32216, Start Num: 41

Candidate Starts for AdaS_55:

(19, 31956), (20, 31965), (34, 32019), (Start: 41 @32061 has 16 MA's),

Gene: Aikyam_58 Start: 32377, Stop: 32535, Start Num: 40

Candidate Starts for Aikyam_58:

(1, 31909), (2, 32017), (4, 32110), (6, 32164), (9, 32233), (28, 32317), (31, 32323), (Start: 40 @32377 has 15 MA's),

Gene: Anekin_57 Start: 33919, Stop: 34074, Start Num: 40

Candidate Starts for Anekin_57:

(33, 33886), (Start: 40 @33919 has 15 MA's),

Gene: Auxilium_55 Start: 31537, Stop: 31689, Start Num: 41

Candidate Starts for Auxilium_55:

(35, 31504), (Start: 41 @31537 has 16 MA's),

Gene: BasketStar_61 Start: 34731, Stop: 34886, Start Num: 41

Candidate Starts for BasketStar_61:

(19, 34626), (20, 34635), (34, 34689), (Start: 41 @34731 has 16 MA's),

Gene: BenchScraper_58 Start: 33569, Stop: 33727, Start Num: 40

Candidate Starts for BenchScraper_58:

(33, 33536), (Start: 40 @33569 has 15 MA's),

Gene: Bhageatrice_60 Start: 36081, Stop: 36239, Start Num: 40

Candidate Starts for Bhageatrice_60:

(28, 36021), (31, 36027), (Start: 40 @36081 has 15 MA's),

Gene: BillyTP_61 Start: 35427, Stop: 35582, Start Num: 41

Candidate Starts for BillyTP_61:

(5, 35202), (7, 35211), (8, 35250), (10, 35283), (19, 35322), (20, 35331), (34, 35385), (Start: 41 @35427 has 16 MA's),

Gene: BlueShadow_59 Start: 34217, Stop: 34372, Start Num: 41

Candidate Starts for BlueShadow_59:

(19, 34112), (20, 34121), (34, 34175), (Start: 41 @34217 has 16 MA's),

Gene: BrayBeast_41 Start: 27369, Stop: 27533, Start Num: 37

Candidate Starts for BrayBeast_41:

(Start: 37 @27369 has 1 MA's), (Start: 43 @27381 has 3 MA's),

Gene: Cassini_53 Start: 32701, Stop: 32931, Start Num: 40

Candidate Starts for Cassini_53:

(22, 32620), (Start: 37 @32689 has 1 MA's), (Start: 40 @32701 has 15 MA's), (47, 32788),

Gene: CookieBear_59 Start: 33811, Stop: 33966, Start Num: 41
Candidate Starts for CookieBear_59:
(19, 33706), (20, 33715), (34, 33769), (Start: 41 @33811 has 16 MA's),

Gene: Ding_53 Start: 31946, Stop: 32098, Start Num: 42
Candidate Starts for Ding_53:
(42, 31946), (46, 31985),

Gene: EvePickles_54 Start: 33798, Stop: 33956, Start Num: 40
Candidate Starts for EvePickles_54:
(Start: 40 @33798 has 15 MA's),

Gene: Faja_59 Start: 35189, Stop: 35341, Start Num: 41
Candidate Starts for Faja_59:
(Start: 41 @35189 has 16 MA's),

Gene: Gibbzilla_47 Start: 27946, Stop: 28098, Start Num: 41
Candidate Starts for Gibbzilla_47:
(Start: 41 @27946 has 16 MA's), (Start: 43 @27949 has 3 MA's), (46, 27985),

Gene: Globfish_59 Start: 34198, Stop: 34398, Start Num: 40
Candidate Starts for Globfish_59:
(25, 34132), (30, 34141), (32, 34150), (Start: 40 @34198 has 15 MA's), (47, 34276),

Gene: Gorpy_59 Start: 34803, Stop: 34958, Start Num: 41
Candidate Starts for Gorpy_59:
(19, 34698), (20, 34707), (34, 34761), (Start: 41 @34803 has 16 MA's),

Gene: GumGum_58 Start: 33167, Stop: 33325, Start Num: 40
Candidate Starts for GumGum_58:
(11, 33035), (12, 33041), (28, 33107), (31, 33113), (Start: 40 @33167 has 15 MA's),

Gene: Hillester_63 Start: 35153, Stop: 35305, Start Num: 41
Candidate Starts for Hillester_63:
(10, 35009), (19, 35048), (34, 35111), (Start: 41 @35153 has 16 MA's),

Gene: Isolde_58 Start: 33480, Stop: 33635, Start Num: 41
Candidate Starts for Isolde_58:
(19, 33375), (20, 33384), (34, 33438), (Start: 41 @33480 has 16 MA's),

Gene: JakeTheSnake_64 Start: 36063, Stop: 36218, Start Num: 41
Candidate Starts for JakeTheSnake_64:
(Start: 41 @36063 has 16 MA's), (Start: 43 @36066 has 3 MA's), (45, 36099),

Gene: JeanClaude_45 Start: 26926, Stop: 27084, Start Num: 40
Candidate Starts for JeanClaude_45:
(13, 26815), (Start: 40 @26926 has 15 MA's),

Gene: JellyBread_56 Start: 32829, Stop: 32987, Start Num: 40
Candidate Starts for JellyBread_56:

(3, 32553), (11, 32697), (12, 32703), (15, 32709), (28, 32769), (31, 32775), (Start: 40 @32829 has 15 MA's),

Gene: Kabloowy_59 Start: 34749, Stop: 34907, Start Num: 40
Candidate Starts for Kabloowy_59:
(28, 34689), (31, 34695), (Start: 40 @34749 has 15 MA's),

Gene: Lasker_59 Start: 34246, Stop: 34470, Start Num: 42
Candidate Starts for Lasker_59:
(21, 34156), (27, 34177), (42, 34246), (46, 34285),

Gene: Lawnathon_60 Start: 33972, Stop: 34127, Start Num: 41
Candidate Starts for Lawnathon_60:
(19, 33867), (20, 33876), (34, 33930), (Start: 41 @33972 has 16 MA's),

Gene: LeBruni_57 Start: 32964, Stop: 33116, Start Num: 40
Candidate Starts for LeBruni_57:
(Start: 40 @32964 has 15 MA's), (46, 33003),

Gene: MUWow_59 Start: 34144, Stop: 34302, Start Num: 40
Candidate Starts for MUWow_59:
(28, 34084), (31, 34090), (Start: 40 @34144 has 15 MA's),

Gene: Mapleville_55 Start: 33294, Stop: 33446, Start Num: 41
Candidate Starts for Mapleville_55:
(7, 33078), (8, 33117), (10, 33150), (19, 33189), (34, 33252), (Start: 41 @33294 has 16 MA's),

Gene: MaterMagnus_60 Start: 34549, Stop: 34707, Start Num: 40
Candidate Starts for MaterMagnus_60:
(1, 34081), (2, 34189), (4, 34282), (6, 34336), (9, 34405), (28, 34489), (31, 34495), (Start: 40 @34549 has 15 MA's),

Gene: MidnightRain_63 Start: 35324, Stop: 35476, Start Num: 41
Candidate Starts for MidnightRain_63:
(7, 35108), (8, 35147), (10, 35180), (19, 35219), (34, 35282), (Start: 41 @35324 has 16 MA's),

Gene: NewKitty_61 Start: 33682, Stop: 33837, Start Num: 40
Candidate Starts for NewKitty_61:
(18, 33589), (Start: 40 @33682 has 15 MA's),

Gene: Persistence_54 Start: 32763, Stop: 32915, Start Num: 43
Candidate Starts for Persistence_54:
(Start: 41 @32760 has 16 MA's), (Start: 43 @32763 has 3 MA's), (45, 32796),

Gene: Phrank15_60 Start: 34109, Stop: 34261, Start Num: 41
Candidate Starts for Phrank15_60:
(5, 33884), (7, 33893), (8, 33932), (10, 33965), (19, 34004), (20, 34013), (34, 34067), (Start: 41 @34109 has 16 MA's), (46, 34148),

Gene: Pigu_43 Start: 26743, Stop: 26892, Start Num: 42
Candidate Starts for Pigu_43:
(27, 26674), (42, 26743),

Gene: RadFad_63 Start: 35153, Stop: 35305, Start Num: 41
Candidate Starts for RadFad_63:
(10, 35009), (19, 35048), (34, 35111), (Start: 41 @35153 has 16 MA's),

Gene: Raphaella_58 Start: 33667, Stop: 33825, Start Num: 40
Candidate Starts for Raphaella_58:
(28, 33607), (31, 33613), (Start: 40 @33667 has 15 MA's),

Gene: Raqqa_51 Start: 31407, Stop: 31562, Start Num: 40
Candidate Starts for Raqqa_51:
(Start: 40 @31407 has 15 MA's),

Gene: Richie_61 Start: 34703, Stop: 34861, Start Num: 40
Candidate Starts for Richie_61:
(11, 34571), (12, 34577), (28, 34643), (31, 34649), (Start: 40 @34703 has 15 MA's),

Gene: Rooter_43 Start: 27383, Stop: 27583, Start Num: 43
Candidate Starts for Rooter_43:
(30, 27326), (32, 27335), (Start: 43 @27383 has 3 MA's),

Gene: Sakai_58 Start: 33514, Stop: 33669, Start Num: 41
Candidate Starts for Sakai_58:
(19, 33409), (20, 33418), (34, 33472), (Start: 41 @33514 has 16 MA's),

Gene: Sarge_40 Start: 26191, Stop: 26391, Start Num: 43
Candidate Starts for Sarge_40:
(30, 26134), (32, 26143), (Start: 43 @26191 has 3 MA's),

Gene: Sashimi_58 Start: 34556, Stop: 34708, Start Num: 40
Candidate Starts for Sashimi_58:
(39, 34553), (Start: 40 @34556 has 15 MA's),

Gene: Shoya_46 Start: 28159, Stop: 28359, Start Num: 43
Candidate Starts for Shoya_46:
(30, 28102), (32, 28111), (Start: 43 @28159 has 3 MA's),

Gene: Shukran_54 Start: 32189, Stop: 32302, Start Num: 46
Candidate Starts for Shukran_54:
(Start: 41 @32147 has 16 MA's), (Start: 43 @32150 has 3 MA's), (46, 32189),

Gene: SonDevVon_63 Start: 34120, Stop: 34275, Start Num: 41
Candidate Starts for SonDevVon_63:
(19, 34015), (20, 34024), (34, 34078), (Start: 41 @34120 has 16 MA's),

Gene: SpicyFrank_62 Start: 34804, Stop: 35013, Start Num: 40
Candidate Starts for SpicyFrank_62:
(Start: 37 @34792 has 1 MA's), (Start: 40 @34804 has 15 MA's), (47, 34891),

Gene: Sporco_63 Start: 35101, Stop: 35253, Start Num: 41
Candidate Starts for Sporco_63:
(14, 34981), (35, 35068), (Start: 41 @35101 has 16 MA's),

Gene: ThayneTheZag_59 Start: 33373, Stop: 33531, Start Num: 40

Candidate Starts for ThayneTheZag_59:

(22, 33292), (Start: 37 @33361 has 1 MA's), (Start: 40 @33373 has 15 MA's),

Gene: Vopal_61 Start: 36835, Stop: 36987, Start Num: 40

Candidate Starts for Vopal_61:

(Start: 37 @36823 has 1 MA's), (Start: 40 @36835 has 15 MA's), (46, 36874),

Gene: Windest_61 Start: 32811, Stop: 32963, Start Num: 41

Candidate Starts for Windest_61:

(8, 32634), (10, 32667), (19, 32706), (34, 32769), (Start: 41 @32811 has 16 MA's), (46, 32850),

Gene: YoungHarleezy_59 Start: 34206, Stop: 34364, Start Num: 40

Candidate Starts for YoungHarleezy_59:

(3, 33930), (11, 34074), (12, 34080), (28, 34146), (31, 34152), (Start: 40 @34206 has 15 MA's),

Gene: Zucker_51 Start: 32868, Stop: 33035, Start Num: 36

Candidate Starts for Zucker_51:

(17, 32769), (23, 32808), (Start: 36 @32868 has 1 MA's), (44, 32886),