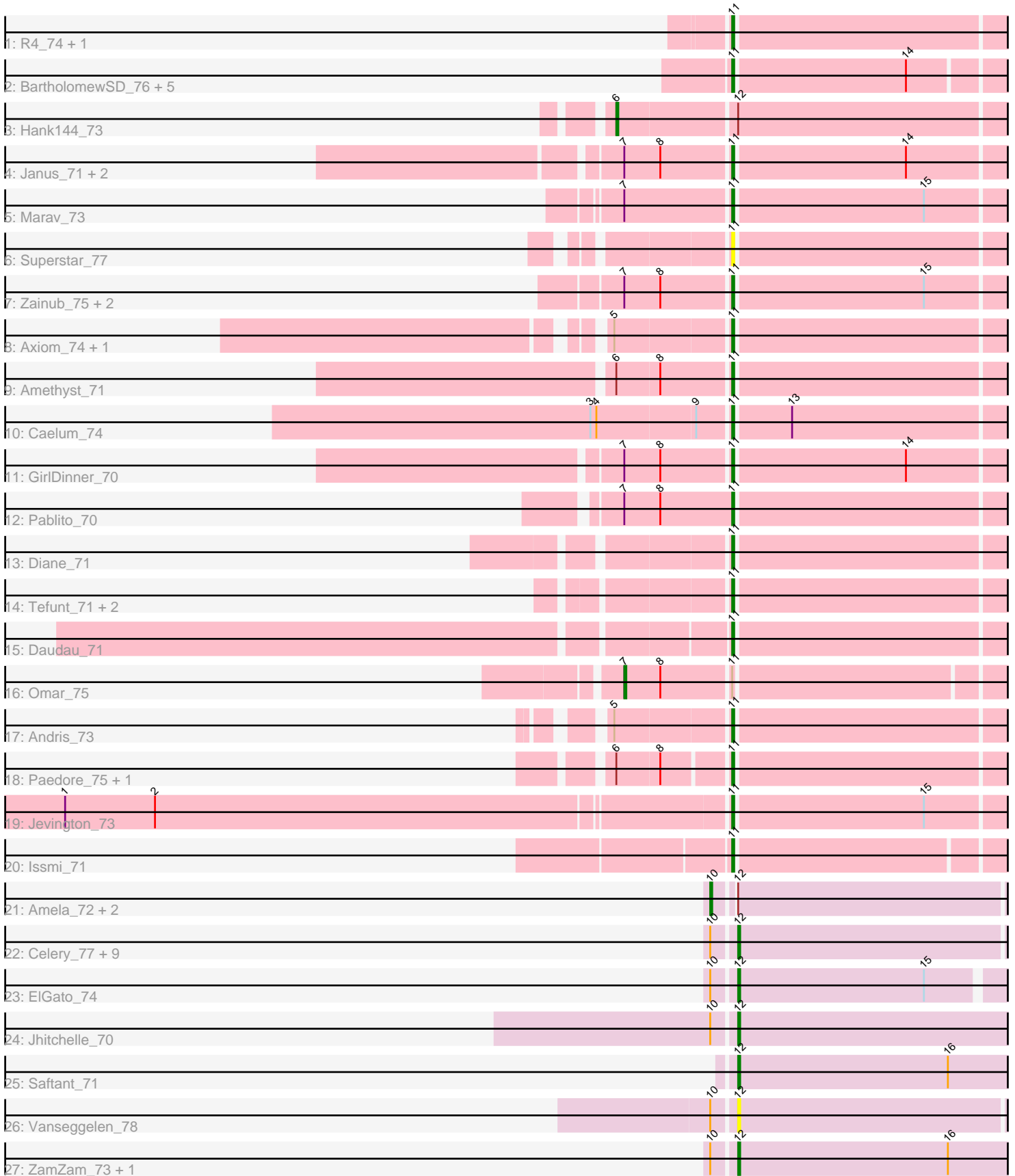


Pham 301445



Note: Tracks are now grouped by subcluster and scaled. Switching in subcluster is indicated by changes in track color. Track scale is now set by default to display the region 30 bp upstream of start 1 to 30 bp downstream of the last possible start. If this default region is judged to be packed too tightly with annotated starts, the track will be further scaled to only show that region of the ORF with annotated starts. This action will be indicated by adding "Zoomed" to the title. For starts, yellow indicates the location of called starts comprised solely of Glimmer/GeneMark auto-annotations, green indicates the location of called starts with at least 1 manual gene annotation.

Pham 301445 Report

This analysis was run 06/08/26 on database version 649.

Pham number 301445 has 53 members, 6 are drafts.

Phages represented in each track:

- Track 1 : R4_74, ELB20_72
- Track 2 : BartholomewSD_76, TrvxScott_70, TinaBelcher_71, Alvy_76, Thestral_73, Bowden_71
- Track 3 : Hank144_73
- Track 4 : Janus_71, SqueakyClean_71, Animus_70
- Track 5 : Marav_73
- Track 6 : Superstar_77
- Track 7 : Zainub_75, Paolo_75, Puginator_75
- Track 8 : Axiom_74, Triumph_74
- Track 9 : Amethyst_71
- Track 10 : Caelum_74
- Track 11 : GirlDinner_70
- Track 12 : Pablito_70
- Track 13 : Diane_71
- Track 14 : Tefunt_71, Haizum_71, Nishikigoi_72
- Track 15 : Daudau_71
- Track 16 : Omar_75
- Track 17 : Andris_73
- Track 18 : Paedore_75, Loofah_78
- Track 19 : Jevington_73
- Track 20 : Issmi_71
- Track 21 : Amela_72, Verabelle_75, phiCAM_69
- Track 22 : Celery_77, Pavo_74, SunkenRoot_74, Conan_74, Provolone_74, Dexers_71, Kaine_73, Verse_73, Alsaber_73, Sudan_73
- Track 23 : ElGato_74
- Track 24 : Jhitchelle_70
- Track 25 : Saftant_71
- Track 26 : Vanseggelen_78
- Track 27 : ZamZam_73, Speedwell_75

Summary of Final Annotations (See graph section above for start numbers):

The start number called the most often in the published annotations is 11, it was called in 31 of the 47 non-draft genes in the pham.

Genes that call this "Most Annotated" start:

- Alvy_76, Amethyst_71, Andris_73, Animus_70, Axiom_74, BartholomewSD_76, Bowden_71, Caelum_74, Daudau_71, Diane_71, ELB20_72, GirlDinner_70, Haizum_71, Issmi_71, Janus_71, Jevington_73, Loofah_78, Marav_73, Nishikigoi_72, Pablito_70, Paedore_75, Paolo_75, Puginator_75, R4_74, SqueakyClean_71, Superstar_77, Tefunt_71, Thestral_73, TinaBelcher_71, Triumph_74, TrvxScott_70, Zainub_75,

Genes that have the "Most Annotated" start but do not call it:

- Omar_75,

Genes that do not have the "Most Annotated" start:

- Alsaber_73, Amela_72, Celery_77, Conan_74, Dexers_71, ElGato_74, Hank144_73, Jhitchelle_70, Kaine_73, Pavo_74, Provolone_74, Saftant_71, Speedwell_75, Sudan_73, SunkenRoot_74, Vanseggelen_78, Verabelle_75, Verse_73, ZamZam_73, phiCAM_69,

Summary by start number:

Start 6:

- Found in 4 of 53 (7.5%) of genes in pham
- Manual Annotations of this start: 1 of 47
- Called 25.0% of time when present
- Phage (with cluster) where this start called: Hank144_73 (BD2),

Start 7:

- Found in 10 of 53 (18.9%) of genes in pham
- Manual Annotations of this start: 1 of 47
- Called 10.0% of time when present
- Phage (with cluster) where this start called: Omar_75 (BD2),

Start 10:

- Found in 18 of 53 (34.0%) of genes in pham
- Manual Annotations of this start: 1 of 47
- Called 16.7% of time when present
- Phage (with cluster) where this start called: Amela_72 (BD3), Verabelle_75 (BD3), phiCAM_69 (BD3),

Start 11:

- Found in 33 of 53 (62.3%) of genes in pham
- Manual Annotations of this start: 31 of 47
- Called 97.0% of time when present
- Phage (with cluster) where this start called: Alvy_76 (BD2), Amethyst_71 (BD2), Andris_73 (BD2), Animus_70 (BD2), Axiom_74 (BD2), BartholomewSD_76 (BD2), Bowden_71 (BD2), Caelum_74 (BD2), Daudau_71 (BD2), Diane_71 (BD2), ELB20_72 (BD2), GirlDinner_70 (BD2), Haizum_71 (BD2), Issmi_71 (BD2), Janus_71 (BD2), Jevington_73 (BD2), Loofah_78 (BD2), Marav_73 (BD2), Nishikigoi_72 (BD2), Pablito_70 (BD2), Paedore_75 (BD2), Paolo_75 (BD2), Puginator_75 (BD2), R4_74 (BD2), SqueakyClean_71 (BD2), Superstar_77 (BD2), Tefunt_71 (BD2), Thestral_73 (BD2), TinaBelcher_71 (BD2), Triumph_74 (BD2), TrvxScott_70 (BD2), Zainub_75 (BD2),

Start 12:

- Found in 20 of 53 (37.7%) of genes in pham
- Manual Annotations of this start: 13 of 47
- Called 80.0% of time when present
- Phage (with cluster) where this start called: Alsaber_73 (BD3), Celery_77 (BD3), Conan_74 (BD3), Dexers_71 (BD3), ElGato_74 (BD3), Jhitchelle_70 (BD3), Kaine_73 (BD3), Pavo_74 (BD3), Provolone_74 (BD3), Saftant_71 (BD3), Speedwell_75 (BD3), Sudan_73 (BD3), SunkenRoot_74 (BD3), Vanseggelen_78 (BD3), Verse_73 (BD3), ZamZam_73 (BD3),

Summary by clusters:

There are 2 clusters represented in this pham: BD3, BD2,

Info for manual annotations of cluster BD2:

- Start number 6 was manually annotated 1 time for cluster BD2.
- Start number 7 was manually annotated 1 time for cluster BD2.
- Start number 11 was manually annotated 31 times for cluster BD2.

Info for manual annotations of cluster BD3:

- Start number 10 was manually annotated 1 time for cluster BD3.
- Start number 12 was manually annotated 13 times for cluster BD3.

Gene Information:

Gene: Alsaber_73 Start: 46481, Stop: 46338, Start Num: 12

Candidate Starts for Alsaber_73:

(Start: 10 @46490 has 1 MA's), (Start: 12 @46481 has 13 MA's),

Gene: Alvy_76 Start: 47865, Stop: 47725, Start Num: 11

Candidate Starts for Alvy_76:

(Start: 11 @47865 has 31 MA's), (14, 47781),

Gene: Amela_72 Start: 47090, Stop: 46938, Start Num: 10

Candidate Starts for Amela_72:

(Start: 10 @47090 has 1 MA's), (Start: 12 @47081 has 13 MA's),

Gene: Amethyst_71 Start: 45168, Stop: 45028, Start Num: 11

Candidate Starts for Amethyst_71:

(Start: 6 @45222 has 1 MA's), (8, 45201), (Start: 11 @45168 has 31 MA's),

Gene: Andris_73 Start: 46065, Stop: 45922, Start Num: 11

Candidate Starts for Andris_73:

(5, 46119), (Start: 11 @46065 has 31 MA's),

Gene: Animus_70 Start: 46420, Stop: 46277, Start Num: 11

Candidate Starts for Animus_70:

(Start: 7 @46471 has 1 MA's), (8, 46453), (Start: 11 @46420 has 31 MA's), (14, 46336),

Gene: Axiom_74 Start: 46815, Stop: 46672, Start Num: 11

Candidate Starts for Axiom_74:

(5, 46869), (Start: 11 @46815 has 31 MA's),

Gene: BartholomewSD_76 Start: 46984, Stop: 46844, Start Num: 11

Candidate Starts for BartholomewSD_76:

(Start: 11 @46984 has 31 MA's), (14, 46900),

Gene: Bowden_71 Start: 47555, Stop: 47415, Start Num: 11

Candidate Starts for Bowden_71:

(Start: 11 @47555 has 31 MA's), (14, 47471),

Gene: Caelum_74 Start: 45822, Stop: 45679, Start Num: 11

Candidate Starts for Caelum_74:

(3, 45888), (4, 45885), (9, 45837), (Start: 11 @45822 has 31 MA's), (13, 45795),

Gene: Celery_77 Start: 46135, Stop: 45992, Start Num: 12

Candidate Starts for Celery_77:

(Start: 10 @46144 has 1 MA's), (Start: 12 @46135 has 13 MA's),

Gene: Conan_74 Start: 46733, Stop: 46590, Start Num: 12

Candidate Starts for Conan_74:

(Start: 10 @46742 has 1 MA's), (Start: 12 @46733 has 13 MA's),

Gene: Daudau_71 Start: 45398, Stop: 45255, Start Num: 11

Candidate Starts for Daudau_71:

(Start: 11 @45398 has 31 MA's),

Gene: Dexers_71 Start: 46699, Stop: 46553, Start Num: 12

Candidate Starts for Dexers_71:

(Start: 10 @46708 has 1 MA's), (Start: 12 @46699 has 13 MA's),

Gene: Diane_71 Start: 45983, Stop: 45843, Start Num: 11

Candidate Starts for Diane_71:

(Start: 11 @45983 has 31 MA's),

Gene: ELB20_72 Start: 46277, Stop: 46134, Start Num: 11

Candidate Starts for ELB20_72:

(Start: 11 @46277 has 31 MA's),

Gene: ElGato_74 Start: 46593, Stop: 46453, Start Num: 12

Candidate Starts for ElGato_74:

(Start: 10 @46602 has 1 MA's), (Start: 12 @46593 has 13 MA's), (15, 46500),

Gene: GirlDinner_70 Start: 45914, Stop: 45771, Start Num: 11

Candidate Starts for GirlDinner_70:

(Start: 7 @45965 has 1 MA's), (8, 45947), (Start: 11 @45914 has 31 MA's), (14, 45830),

Gene: Haizum_71 Start: 45979, Stop: 45836, Start Num: 11

Candidate Starts for Haizum_71:

(Start: 11 @45979 has 31 MA's),

Gene: Hank144_73 Start: 46558, Stop: 46358, Start Num: 6

Candidate Starts for Hank144_73:

(Start: 6 @46558 has 1 MA's), (Start: 12 @46501 has 13 MA's),

Gene: Issmi_71 Start: 46071, Stop: 45931, Start Num: 11

Candidate Starts for Issmi_71:

(Start: 11 @46071 has 31 MA's),

Gene: Janus_71 Start: 46254, Stop: 46111, Start Num: 11

Candidate Starts for Janus_71:

(Start: 7 @46305 has 1 MA's), (8, 46287), (Start: 11 @46254 has 31 MA's), (14, 46170),

Gene: Jevington_73 Start: 45499, Stop: 45356, Start Num: 11

Candidate Starts for Jevington_73:

(1, 45823), (2, 45778), (Start: 11 @45499 has 31 MA's), (15, 45406),

Gene: Jhitchelle_70 Start: 45770, Stop: 45624, Start Num: 12

Candidate Starts for Jhitchelle_70:

(Start: 10 @45779 has 1 MA's), (Start: 12 @45770 has 13 MA's),

Gene: Kaine_73 Start: 46505, Stop: 46362, Start Num: 12

Candidate Starts for Kaine_73:

(Start: 10 @46514 has 1 MA's), (Start: 12 @46505 has 13 MA's),

Gene: Loofah_78 Start: 47425, Stop: 47282, Start Num: 11

Candidate Starts for Loofah_78:

(Start: 6 @47476 has 1 MA's), (8, 47455), (Start: 11 @47425 has 31 MA's),

Gene: Marav_73 Start: 45485, Stop: 45342, Start Num: 11

Candidate Starts for Marav_73:

(Start: 7 @45536 has 1 MA's), (Start: 11 @45485 has 31 MA's), (15, 45392),

Gene: Nishikigoi_72 Start: 45979, Stop: 45836, Start Num: 11

Candidate Starts for Nishikigoi_72:

(Start: 11 @45979 has 31 MA's),

Gene: Omar_75 Start: 44901, Stop: 44710, Start Num: 7

Candidate Starts for Omar_75:

(Start: 7 @44901 has 1 MA's), (8, 44883), (Start: 11 @44850 has 31 MA's),

Gene: Pablito_70 Start: 45083, Stop: 44940, Start Num: 11

Candidate Starts for Pablito_70:

(Start: 7 @45137 has 1 MA's), (8, 45119), (Start: 11 @45083 has 31 MA's),

Gene: Paedore_75 Start: 47594, Stop: 47451, Start Num: 11

Candidate Starts for Paedore_75:

(Start: 6 @47645 has 1 MA's), (8, 47624), (Start: 11 @47594 has 31 MA's),

Gene: Paolo_75 Start: 46762, Stop: 46619, Start Num: 11

Candidate Starts for Paolo_75:

(Start: 7 @46813 has 1 MA's), (8, 46795), (Start: 11 @46762 has 31 MA's), (15, 46669),

Gene: Pavo_74 Start: 46681, Stop: 46538, Start Num: 12

Candidate Starts for Pavo_74:

(Start: 10 @46690 has 1 MA's), (Start: 12 @46681 has 13 MA's),

Gene: Provolone_74 Start: 46822, Stop: 46679, Start Num: 12
Candidate Starts for Provolone_74:
(Start: 10 @46831 has 1 MA's), (Start: 12 @46822 has 13 MA's),

Gene: Puginator_75 Start: 46810, Stop: 46667, Start Num: 11
Candidate Starts for Puginator_75:
(Start: 7 @46861 has 1 MA's), (8, 46843), (Start: 11 @46810 has 31 MA's), (15, 46717),

Gene: R4_74 Start: 46437, Stop: 46294, Start Num: 11
Candidate Starts for R4_74:
(Start: 11 @46437 has 31 MA's),

Gene: Saftant_71 Start: 46556, Stop: 46410, Start Num: 12
Candidate Starts for Saftant_71:
(Start: 12 @46556 has 13 MA's), (16, 46451),

Gene: Speedwell_75 Start: 47266, Stop: 47120, Start Num: 12
Candidate Starts for Speedwell_75:
(Start: 10 @47275 has 1 MA's), (Start: 12 @47266 has 13 MA's), (16, 47161),

Gene: SqueakyClean_71 Start: 46432, Stop: 46289, Start Num: 11
Candidate Starts for SqueakyClean_71:
(Start: 7 @46483 has 1 MA's), (8, 46465), (Start: 11 @46432 has 31 MA's), (14, 46348),

Gene: Sudan_73 Start: 46488, Stop: 46345, Start Num: 12
Candidate Starts for Sudan_73:
(Start: 10 @46497 has 1 MA's), (Start: 12 @46488 has 13 MA's),

Gene: SunkenRoot_74 Start: 46855, Stop: 46712, Start Num: 12
Candidate Starts for SunkenRoot_74:
(Start: 10 @46864 has 1 MA's), (Start: 12 @46855 has 13 MA's),

Gene: Superstar_77 Start: 45863, Stop: 45720, Start Num: 11
Candidate Starts for Superstar_77:
(Start: 11 @45863 has 31 MA's),

Gene: Tefunt_71 Start: 45893, Stop: 45750, Start Num: 11
Candidate Starts for Tefunt_71:
(Start: 11 @45893 has 31 MA's),

Gene: Thestral_73 Start: 47582, Stop: 47442, Start Num: 11
Candidate Starts for Thestral_73:
(Start: 11 @47582 has 31 MA's), (14, 47498),

Gene: TinaBelcher_71 Start: 47444, Stop: 47304, Start Num: 11
Candidate Starts for TinaBelcher_71:
(Start: 11 @47444 has 31 MA's), (14, 47360),

Gene: Triumph_74 Start: 46553, Stop: 46410, Start Num: 11
Candidate Starts for Triumph_74:
(5, 46607), (Start: 11 @46553 has 31 MA's),

Gene: TrvxScott_70 Start: 47549, Stop: 47409, Start Num: 11

Candidate Starts for TrvxScott_70:
(Start: 11 @47549 has 31 MA's), (14, 47465),

Gene: Vanseggelen_78 Start: 46338, Stop: 46195, Start Num: 12
Candidate Starts for Vanseggelen_78:
(Start: 10 @46347 has 1 MA's), (Start: 12 @46338 has 13 MA's),

Gene: Verabelle_75 Start: 45786, Stop: 45634, Start Num: 10
Candidate Starts for Verabelle_75:
(Start: 10 @45786 has 1 MA's), (Start: 12 @45777 has 13 MA's),

Gene: Verse_73 Start: 47119, Stop: 46976, Start Num: 12
Candidate Starts for Verse_73:
(Start: 10 @47128 has 1 MA's), (Start: 12 @47119 has 13 MA's),

Gene: Zainub_75 Start: 46736, Stop: 46593, Start Num: 11
Candidate Starts for Zainub_75:
(Start: 7 @46787 has 1 MA's), (8, 46769), (Start: 11 @46736 has 31 MA's), (15, 46643),

Gene: ZamZam_73 Start: 46868, Stop: 46722, Start Num: 12
Candidate Starts for ZamZam_73:
(Start: 10 @46877 has 1 MA's), (Start: 12 @46868 has 13 MA's), (16, 46763),

Gene: phiCAM_69 Start: 47950, Stop: 47798, Start Num: 10
Candidate Starts for phiCAM_69:
(Start: 10 @47950 has 1 MA's), (Start: 12 @47941 has 13 MA's),