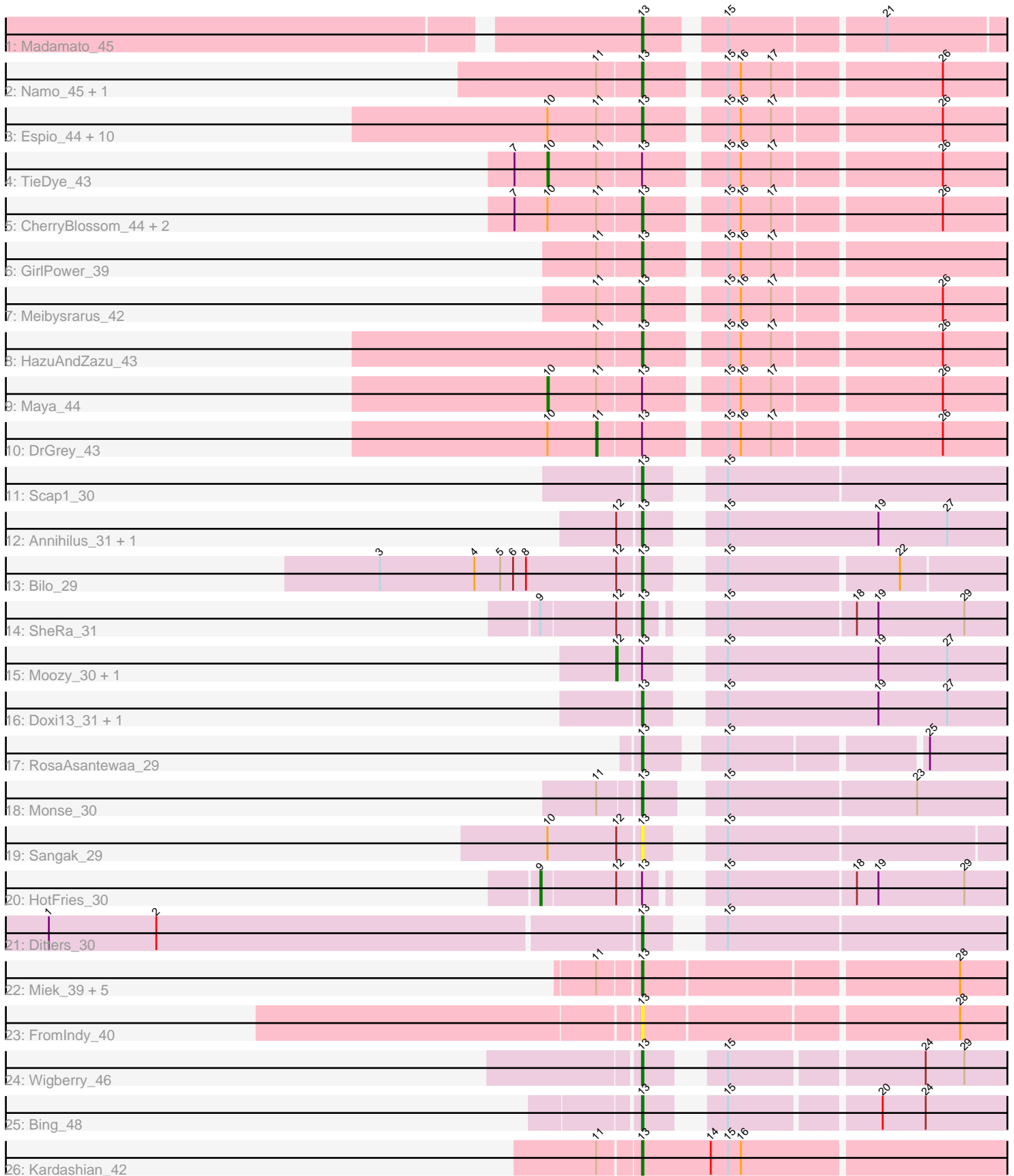


Pham 301481



Note: Tracks are now grouped by subcluster and scaled. Switching in subcluster is indicated by changes in track color. Track scale is now set by default to display the region 30 bp upstream of start 1 to 30 bp downstream of the last possible start. If this default region is judged to be packed too tightly with annotated starts, the track will be further scaled to only show that region of the ORF with annotated starts. This action will be indicated by adding "Zoomed" to the title. For starts, yellow indicates the location of called starts comprised solely of Glimmer/GeneMark auto-annotations, green indicates the location of called starts with at least 1 manual gene annotation.

Pham 301481 Report

This analysis was run 06/08/26 on database version 649.

Pham number 301481 has 47 members, 3 are drafts.

Phages represented in each track:

- Track 1 : Madamoto_45
- Track 2 : Namu_45, Rima_45
- Track 3 : Espio_44, OlympicHelado_44, Indigenous_44, Spectropatronm_44, Jaylociraptor_44, Popy_44, IceWarrior_43, Esketit_44, FidgetOrca_44, FrodoSwaggins_44, Soshi_43
- Track 4 : TieDye_43
- Track 5 : CherryBlossom_44, TaidaOne_44, TonyStarch_43
- Track 6 : GirlPower_39
- Track 7 : Meibysrarus_42
- Track 8 : HazuAndZazu_43
- Track 9 : Maya_44
- Track 10 : DrGrey_43
- Track 11 : Scap1_30
- Track 12 : Annihilus_31, PherryCruz_30
- Track 13 : Bilo_29
- Track 14 : SheRa_31
- Track 15 : Moozy_30, RavenPuff_30
- Track 16 : Doxi13_31, GoblinVoyage_31
- Track 17 : RosaAsantewaa_29
- Track 18 : Monse_30
- Track 19 : Sangak_29
- Track 20 : HotFries_30
- Track 21 : Ditters_30
- Track 22 : Miek_39, SendItCS_38, CricKo_40, Thiqqums_40, Regigigas_41, Rainydai_39
- Track 23 : FromIndy_40
- Track 24 : Wigberry_46
- Track 25 : Bing_48
- Track 26 : Kardashian_42

Summary of Final Annotations (See graph section above for start numbers):

The start number called the most often in the published annotations is 13, it was called in 38 of the 44 non-draft genes in the pham.

Genes that call this "Most Annotated" start:

- Annihilus_31, Bilo_29, Bing_48, CherryBlossom_44, CricKo_40, Ditters_30, Doxi13_31, Esketit_44, Espio_44, FidgetOrca_44, FrodoSwaggins_44, FromIndy_40, GirlPower_39, GoblinVoyage_31, HazuAndZazu_43, IceWarrior_43, Indigenous_44, Jaylociraptor_44, Kardashian_42, Madamato_45, Meibysrarus_42, Miek_39, Monse_30, Namu_45, OlympicHelado_44, PherryCruz_30, Popy_44, Rainydai_39, Regigigas_41, Rima_45, RosaAsantewaa_29, Sangak_29, Scap1_30, SendItCS_38, SheRa_31, Soshi_43, Spectropatronm_44, TaidaOne_44, Thiqqums_40, TonyStarch_43, Wigberry_46,

Genes that have the "Most Annotated" start but do not call it:

- DrGrey_43, HotFries_30, Maya_44, Moozy_30, RavenPuff_30, TieDye_43,

Genes that do not have the "Most Annotated" start:

-

Summary by start number:

Start 9:

- Found in 2 of 47 (4.3%) of genes in pham
- Manual Annotations of this start: 1 of 44
- Called 50.0% of time when present
- Phage (with cluster) where this start called: HotFries_30 (BI2),

Start 10:

- Found in 18 of 47 (38.3%) of genes in pham
- Manual Annotations of this start: 2 of 44
- Called 11.1% of time when present
- Phage (with cluster) where this start called: Maya_44 (BI1), TieDye_43 (BI1),

Start 11:

- Found in 30 of 47 (63.8%) of genes in pham
- Manual Annotations of this start: 1 of 44
- Called 3.3% of time when present
- Phage (with cluster) where this start called: DrGrey_43 (BI1),

Start 12:

- Found in 8 of 47 (17.0%) of genes in pham
- Manual Annotations of this start: 2 of 44
- Called 25.0% of time when present
- Phage (with cluster) where this start called: Moozy_30 (BI2), RavenPuff_30 (BI2),

Start 13:

- Found in 47 of 47 (100.0%) of genes in pham
- Manual Annotations of this start: 38 of 44
- Called 87.2% of time when present
- Phage (with cluster) where this start called: Annihilus_31 (BI2), Bilo_29 (BI2), Bing_48 (BI5), CherryBlossom_44 (BI1), CricKo_40 (BI4), Ditters_30 (BI2), Doxi13_31 (BI2), Esketit_44 (BI1), Espio_44 (BI1), FidgetOrca_44 (BI1), FrodoSwaggins_44 (BI1), FromIndy_40 (BI4), GirlPower_39 (BI1), GoblinVoyage_31 (BI2), HazuAndZazu_43 (BI1), IceWarrior_43 (BI1), Indigenous_44 (BI1), Jaylociraptor_44 (BI1), Kardashian_42 (BI6), Madamato_45 (BI1), Meibysrarus_42

(BI1), Miek_39 (BI4), Monse_30 (BI2), Namo_45 (BI1), OlympicHelado_44 (BI1), PherryCruz_30 (BI2), Popy_44 (BI1), Rainydai_39 (BI4), Regigigas_41 (BI4), Rima_45 (BI1), RosaAsantewaa_29 (BI2), Sangak_29 (BI2), Scap1_30 (BI2), SendItCS_38 (BI4), SheRa_31 (BI2), Soshi_43 (BI1), SpectroPatronm_44 (BI1), TaidaOne_44 (BI1), Thiqqums_40 (BI4), TonyStarch_43 (BI1), Wigberry_46 (BI5),

Summary by clusters:

There are 5 clusters represented in this pham: BI6, BI4, BI5, BI2, BI1,

Info for manual annotations of cluster BI1:

- Start number 10 was manually annotated 2 times for cluster BI1.
- Start number 11 was manually annotated 1 time for cluster BI1.
- Start number 13 was manually annotated 20 times for cluster BI1.

Info for manual annotations of cluster BI2:

- Start number 9 was manually annotated 1 time for cluster BI2.
- Start number 12 was manually annotated 2 times for cluster BI2.
- Start number 13 was manually annotated 10 times for cluster BI2.

Info for manual annotations of cluster BI4:

- Start number 13 was manually annotated 5 times for cluster BI4.

Info for manual annotations of cluster BI5:

- Start number 13 was manually annotated 2 times for cluster BI5.

Info for manual annotations of cluster BI6:

- Start number 13 was manually annotated 1 time for cluster BI6.

Gene Information:

Gene: Annihilus_31 Start: 24324, Stop: 24563, Start Num: 13

Candidate Starts for Annihilus_31:

(Start: 12 @24309 has 2 MA's), (Start: 13 @24324 has 38 MA's), (15, 24360), (19, 24465), (27, 24513),

Gene: Bilo_29 Start: 24475, Stop: 24705, Start Num: 13

Candidate Starts for Bilo_29:

(3, 24295), (4, 24361), (5, 24379), (6, 24388), (8, 24397), (Start: 12 @24460 has 2 MA's), (Start: 13 @24475 has 38 MA's), (15, 24511), (22, 24625),

Gene: Bing_48 Start: 31061, Stop: 31282, Start Num: 13

Candidate Starts for Bing_48:

(Start: 13 @31061 has 38 MA's), (15, 31097), (20, 31193), (24, 31223),

Gene: CherryBlossom_44 Start: 29980, Stop: 30258, Start Num: 13

Candidate Starts for CherryBlossom_44:

(7, 29896), (Start: 10 @29917 has 2 MA's), (Start: 11 @29950 has 1 MA's), (Start: 13 @29980 has 38 MA's), (15, 30028), (16, 30037), (17, 30058), (26, 30169),

Gene: CricKo_40 Start: 28217, Stop: 28486, Start Num: 13

Candidate Starts for CricKo_40:

(Start: 11 @28190 has 1 MA's), (Start: 13 @28217 has 38 MA's), (28, 28427),

Gene: Ditters_30 Start: 24742, Stop: 24978, Start Num: 13

Candidate Starts for Ditters_30:

(1, 24337), (2, 24412), (Start: 13 @24742 has 38 MA's), (15, 24778),

Gene: Doxi13_31 Start: 24287, Stop: 24526, Start Num: 13

Candidate Starts for Doxi13_31:

(Start: 13 @24287 has 38 MA's), (15, 24323), (19, 24428), (27, 24476),

Gene: DrGrey_43 Start: 30291, Stop: 30599, Start Num: 11

Candidate Starts for DrGrey_43:

(Start: 10 @30258 has 2 MA's), (Start: 11 @30291 has 1 MA's), (Start: 13 @30321 has 38 MA's), (15, 30369), (16, 30378), (17, 30399), (26, 30510),

Gene: Esketit_44 Start: 30058, Stop: 30336, Start Num: 13

Candidate Starts for Esketit_44:

(Start: 10 @29995 has 2 MA's), (Start: 11 @30028 has 1 MA's), (Start: 13 @30058 has 38 MA's), (15, 30106), (16, 30115), (17, 30136), (26, 30247),

Gene: Espio_44 Start: 30716, Stop: 30994, Start Num: 13

Candidate Starts for Espio_44:

(Start: 10 @30653 has 2 MA's), (Start: 11 @30686 has 1 MA's), (Start: 13 @30716 has 38 MA's), (15, 30764), (16, 30773), (17, 30794), (26, 30905),

Gene: FidgetOrca_44 Start: 30063, Stop: 30341, Start Num: 13

Candidate Starts for FidgetOrca_44:

(Start: 10 @30000 has 2 MA's), (Start: 11 @30033 has 1 MA's), (Start: 13 @30063 has 38 MA's), (15, 30111), (16, 30120), (17, 30141), (26, 30252),

Gene: FrodoSwaggins_44 Start: 30715, Stop: 30993, Start Num: 13

Candidate Starts for FrodoSwaggins_44:

(Start: 10 @30652 has 2 MA's), (Start: 11 @30685 has 1 MA's), (Start: 13 @30715 has 38 MA's), (15, 30763), (16, 30772), (17, 30793), (26, 30904),

Gene: FromIndy_40 Start: 27820, Stop: 28089, Start Num: 13

Candidate Starts for FromIndy_40:

(Start: 13 @27820 has 38 MA's), (28, 28030),

Gene: GirlPower_39 Start: 30530, Stop: 30808, Start Num: 13

Candidate Starts for GirlPower_39:

(Start: 11 @30500 has 1 MA's), (Start: 13 @30530 has 38 MA's), (15, 30578), (16, 30587), (17, 30608),

Gene: GoblinVoyage_31 Start: 24287, Stop: 24526, Start Num: 13

Candidate Starts for GoblinVoyage_31:

(Start: 13 @24287 has 38 MA's), (15, 24323), (19, 24428), (27, 24476),

Gene: HazuAndZazu_43 Start: 30317, Stop: 30595, Start Num: 13

Candidate Starts for HazuAndZazu_43:

(Start: 11 @30287 has 1 MA's), (Start: 13 @30317 has 38 MA's), (15, 30365), (16, 30374), (17, 30395), (26, 30506),

Gene: HotFries_30 Start: 24286, Stop: 24582, Start Num: 9

Candidate Starts for HotFries_30:

(Start: 9 @24286 has 1 MA's), (Start: 12 @24337 has 2 MA's), (Start: 13 @24352 has 38 MA's), (15, 24382), (18, 24469), (19, 24484), (29, 24544),

Gene: IceWarrior_43 Start: 29758, Stop: 30036, Start Num: 13

Candidate Starts for IceWarrior_43:

(Start: 10 @29695 has 2 MA's), (Start: 11 @29728 has 1 MA's), (Start: 13 @29758 has 38 MA's), (15, 29806), (16, 29815), (17, 29836), (26, 29947),

Gene: Indigenous_44 Start: 30058, Stop: 30336, Start Num: 13

Candidate Starts for Indigenous_44:

(Start: 10 @29995 has 2 MA's), (Start: 11 @30028 has 1 MA's), (Start: 13 @30058 has 38 MA's), (15, 30106), (16, 30115), (17, 30136), (26, 30247),

Gene: Jaylociraptor_44 Start: 30058, Stop: 30336, Start Num: 13

Candidate Starts for Jaylociraptor_44:

(Start: 10 @29995 has 2 MA's), (Start: 11 @30028 has 1 MA's), (Start: 13 @30058 has 38 MA's), (15, 30106), (16, 30115), (17, 30136), (26, 30247),

Gene: Kardashian_42 Start: 29744, Stop: 30022, Start Num: 13

Candidate Starts for Kardashian_42:

(Start: 11 @29717 has 1 MA's), (Start: 13 @29744 has 38 MA's), (14, 29792), (15, 29804), (16, 29813),

Gene: Madamoto_45 Start: 30215, Stop: 30487, Start Num: 13

Candidate Starts for Madamoto_45:

(Start: 13 @30215 has 38 MA's), (15, 30260), (21, 30362),

Gene: Maya_44 Start: 30009, Stop: 30350, Start Num: 10

Candidate Starts for Maya_44:

(Start: 10 @30009 has 2 MA's), (Start: 11 @30042 has 1 MA's), (Start: 13 @30072 has 38 MA's), (15, 30120), (16, 30129), (17, 30150), (26, 30261),

Gene: Meibysrurus_42 Start: 29435, Stop: 29713, Start Num: 13

Candidate Starts for Meibysrurus_42:

(Start: 11 @29405 has 1 MA's), (Start: 13 @29435 has 38 MA's), (15, 29483), (16, 29492), (17, 29513), (26, 29624),

Gene: Miek_39 Start: 27833, Stop: 28102, Start Num: 13

Candidate Starts for Miek_39:

(Start: 11 @27806 has 1 MA's), (Start: 13 @27833 has 38 MA's), (28, 28043),

Gene: Monse_30 Start: 24196, Stop: 24438, Start Num: 13

Candidate Starts for Monse_30:

(Start: 11 @24169 has 1 MA's), (Start: 13 @24196 has 38 MA's), (15, 24235), (23, 24364),

Gene: Moozy_30 Start: 24296, Stop: 24550, Start Num: 12

Candidate Starts for Moozy_30:

(Start: 12 @24296 has 2 MA's), (Start: 13 @24311 has 38 MA's), (15, 24347), (19, 24452), (27, 24500),

Gene: Namo_45 Start: 30403, Stop: 30681, Start Num: 13

Candidate Starts for Namo_45:

(Start: 11 @30373 has 1 MA's), (Start: 13 @30403 has 38 MA's), (15, 30451), (16, 30460), (17, 30481), (26, 30592),

Gene: OlympicHelado_44 Start: 30079, Stop: 30357, Start Num: 13

Candidate Starts for OlympicHelado_44:

(Start: 10 @30016 has 2 MA's), (Start: 11 @30049 has 1 MA's), (Start: 13 @30079 has 38 MA's), (15, 30127), (16, 30136), (17, 30157), (26, 30268),

Gene: PherryCruz_30 Start: 24283, Stop: 24522, Start Num: 13

Candidate Starts for PherryCruz_30:

(Start: 12 @24268 has 2 MA's), (Start: 13 @24283 has 38 MA's), (15, 24319), (19, 24424), (27, 24472),

Gene: Popy_44 Start: 30715, Stop: 30993, Start Num: 13

Candidate Starts for Popy_44:

(Start: 10 @30652 has 2 MA's), (Start: 11 @30685 has 1 MA's), (Start: 13 @30715 has 38 MA's), (15, 30763), (16, 30772), (17, 30793), (26, 30904),

Gene: Rainydai_39 Start: 28217, Stop: 28486, Start Num: 13

Candidate Starts for Rainydai_39:

(Start: 11 @28190 has 1 MA's), (Start: 13 @28217 has 38 MA's), (28, 28427),

Gene: RavenPuff_30 Start: 24268, Stop: 24522, Start Num: 12

Candidate Starts for RavenPuff_30:

(Start: 12 @24268 has 2 MA's), (Start: 13 @24283 has 38 MA's), (15, 24319), (19, 24424), (27, 24472),

Gene: Regigigas_41 Start: 28217, Stop: 28486, Start Num: 13

Candidate Starts for Regigigas_41:

(Start: 11 @28190 has 1 MA's), (Start: 13 @28217 has 38 MA's), (28, 28427),

Gene: Rima_45 Start: 30403, Stop: 30681, Start Num: 13

Candidate Starts for Rima_45:

(Start: 11 @30373 has 1 MA's), (Start: 13 @30403 has 38 MA's), (15, 30451), (16, 30460), (17, 30481), (26, 30592),

Gene: RosaAsantewaa_29 Start: 23959, Stop: 24210, Start Num: 13

Candidate Starts for RosaAsantewaa_29:

(Start: 13 @23959 has 38 MA's), (15, 24004), (25, 24130),

Gene: Sangak_29 Start: 23868, Stop: 24101, Start Num: 13

Candidate Starts for Sangak_29:

(Start: 10 @23805 has 2 MA's), (Start: 12 @23853 has 2 MA's), (Start: 13 @23868 has 38 MA's), (15, 23904),

Gene: Scap1_30 Start: 24113, Stop: 24349, Start Num: 13

Candidate Starts for Scap1_30:

(Start: 13 @24113 has 38 MA's), (15, 24149),

Gene: SendItCS_38 Start: 27833, Stop: 28090, Start Num: 13

Candidate Starts for SendItCS_38:

(Start: 11 @27806 has 1 MA's), (Start: 13 @27833 has 38 MA's), (28, 28031),

Gene: SheRa_31 Start: 24353, Stop: 24583, Start Num: 13

Candidate Starts for SheRa_31:

(Start: 9 @24287 has 1 MA's), (Start: 12 @24338 has 2 MA's), (Start: 13 @24353 has 38 MA's), (15, 24383), (18, 24470), (19, 24485), (29, 24545),

Gene: Soshi_43 Start: 30327, Stop: 30605, Start Num: 13

Candidate Starts for Soshi_43:

(Start: 10 @30264 has 2 MA's), (Start: 11 @30297 has 1 MA's), (Start: 13 @30327 has 38 MA's), (15, 30375), (16, 30384), (17, 30405), (26, 30516),

Gene: Spectropatronm_44 Start: 30058, Stop: 30336, Start Num: 13

Candidate Starts for Spectropatronm_44:

(Start: 10 @29995 has 2 MA's), (Start: 11 @30028 has 1 MA's), (Start: 13 @30058 has 38 MA's), (15, 30106), (16, 30115), (17, 30136), (26, 30247),

Gene: TaidaOne_44 Start: 30611, Stop: 30889, Start Num: 13

Candidate Starts for TaidaOne_44:

(7, 30527), (Start: 10 @30548 has 2 MA's), (Start: 11 @30581 has 1 MA's), (Start: 13 @30611 has 38 MA's), (15, 30659), (16, 30668), (17, 30689), (26, 30800),

Gene: Thiqqums_40 Start: 28217, Stop: 28486, Start Num: 13

Candidate Starts for Thiqqums_40:

(Start: 11 @28190 has 1 MA's), (Start: 13 @28217 has 38 MA's), (28, 28427),

Gene: TieDye_43 Start: 29592, Stop: 29933, Start Num: 10

Candidate Starts for TieDye_43:

(7, 29571), (Start: 10 @29592 has 2 MA's), (Start: 11 @29625 has 1 MA's), (Start: 13 @29655 has 38 MA's), (15, 29703), (16, 29712), (17, 29733), (26, 29844),

Gene: TonyStarch_43 Start: 29760, Stop: 30038, Start Num: 13

Candidate Starts for TonyStarch_43:

(7, 29676), (Start: 10 @29697 has 2 MA's), (Start: 11 @29730 has 1 MA's), (Start: 13 @29760 has 38 MA's), (15, 29808), (16, 29817), (17, 29838), (26, 29949),

Gene: Wigberry_46 Start: 30307, Stop: 30528, Start Num: 13

Candidate Starts for Wigberry_46:

(Start: 13 @30307 has 38 MA's), (15, 30343), (24, 30469), (29, 30496),