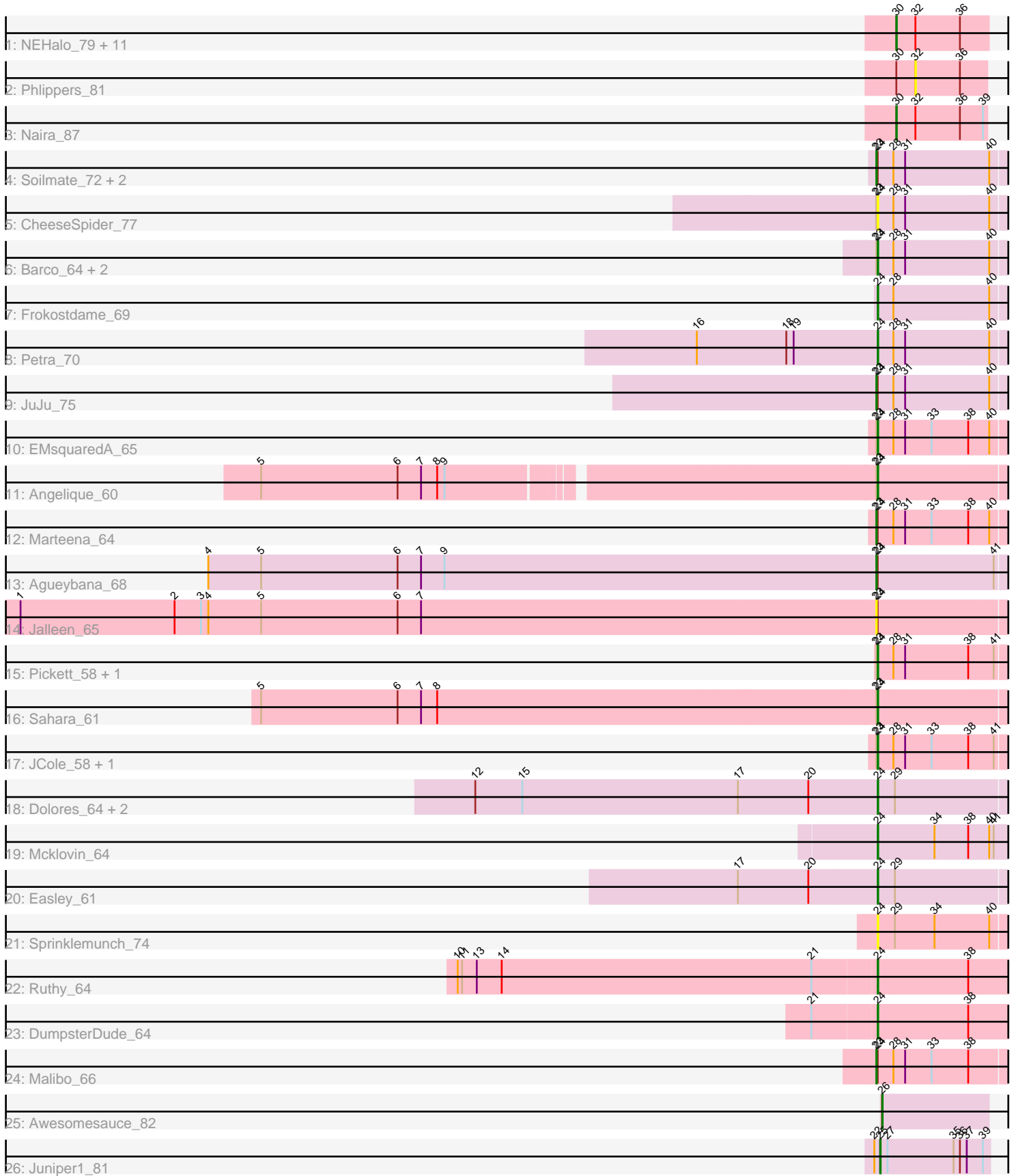


Pham 301492



Note: Tracks are now grouped by subcluster and scaled. Switching in subcluster is indicated by changes in track color. Track scale is now set by default to display the region 30 bp upstream of start 1 to 30 bp downstream of the last possible start. If this default region is judged to be packed too tightly with annotated starts, the track will be further scaled to only show that region of the ORF with annotated starts. This action will be indicated by adding "Zoomed" to the title. For starts, yellow indicates the location of called starts comprised solely of Glimmer/GeneMark auto-annotations, green indicates the location of called starts with at least 1 manual gene annotation.

Pham 301492 Report

This analysis was run 06/08/26 on database version 649.

Pham number 301492 has 45 members, 5 are drafts.

Phages represented in each track:

- Track 1 : NEHalo_79, Bigfoot_78, Topgun_79, AFIS_80, CactusRose_86, Nerujay_87, MrGordo_85, Wilkins_80, Arcanine_86, Slagathor_83, Peterson_82, Ohno789_86
- Track 2 : Phlippers_81
- Track 3 : Naira_87
- Track 4 : Soilmate_72, Blino_70, CarolAnn_69
- Track 5 : CheeseSpider_77
- Track 6 : Barco_64, BlingBling_63, Zilla_64
- Track 7 : Frokostdame_69
- Track 8 : Petra_70
- Track 9 : JuJu_75
- Track 10 : EMSquaredA_65
- Track 11 : Angelique_60
- Track 12 : Marteena_64
- Track 13 : Agueybana_68
- Track 14 : Jalleen_65
- Track 15 : Pickett_58, RavenCo17_63
- Track 16 : Sahara_61
- Track 17 : JCole_58, Yeet412_59
- Track 18 : Dolores_64, WinkNick_64, Sekhmet_63
- Track 19 : Mcklovin_64
- Track 20 : Easley_61
- Track 21 : Sprinklemunch_74
- Track 22 : Ruthy_64
- Track 23 : DumpsterDude_64
- Track 24 : Malibo_66
- Track 25 : Awesomesauce_82
- Track 26 : Juniper1_81

Summary of Final Annotations (See graph section above for start numbers):

The start number called the most often in the published annotations is 24, it was called in 19 of the 40 non-draft genes in the pham.

Genes that call this "Most Annotated" start:

- Angelique_60, Barco_64, BlingBling_63, CheeseSpider_77, Dolores_64, DumpsterDude_64, EMSquaredA_65, Easley_61, Frokostdame_69, JCole_58, Mcklovin_64, Petra_70, Pickett_58, RavenCo17_63, Ruthy_64, Sahara_61, Sekhmet_63, Sprinklemunch_74, WinkNick_64, Yeet412_59, Zilla_64,

Genes that have the "Most Annotated" start but do not call it:

- Agueybana_68, Blino_70, CarolAnn_69, Jalleen_65, JuJu_75, Malibo_66, Marteena_64, Soilmate_72,

Genes that do not have the "Most Annotated" start:

- AFIS_80, Arcanine_86, Awesomesauce_82, Bigfoot_78, CactusRose_86, Juniper1_81, MrGordo_85, NEHalo_79, Naira_87, Nerujay_87, Ohno789_86, Peterson_82, Phlippers_81, Slagathor_83, Topgun_79, Wilkins_80,

Summary by start number:

Start 23:

- Found in 19 of 45 (42.2%) of genes in pham
- Manual Annotations of this start: 6 of 40
- Called 42.1% of time when present
- Phage (with cluster) where this start called: Agueybana_68 (CZ1), Blino_70 (CV), CarolAnn_69 (CV), Jalleen_65 (CZ2), JuJu_75 (CV), Malibo_66 (DW), Marteena_64 (CY1), Soilmate_72 (CV),

Start 24:

- Found in 29 of 45 (64.4%) of genes in pham
- Manual Annotations of this start: 19 of 40
- Called 72.4% of time when present
- Phage (with cluster) where this start called: Angelique_60 (CY1), Barco_64 (CV), BlingBling_63 (CV), CheeseSpider_77 (CV), Dolores_64 (CZ4), DumpsterDude_64 (DW), EMSquaredA_65 (CY1), Easley_61 (CZ4), Frokostdame_69 (CV), JCole_58 (CZ2), Mcklovin_64 (CZ4), Petra_70 (CV), Pickett_58 (CZ2), RavenCo17_63 (CZ8), Ruthy_64 (DW), Sahara_61 (CZ2), Sekhmet_63 (CZ4), Sprinklemunch_74 (DW), WinkNick_64 (CZ4), Yeet412_59 (CZ2), Zilla_64 (CV),

Start 25:

- Found in 1 of 45 (2.2%) of genes in pham
- Manual Annotations of this start: 1 of 40
- Called 100.0% of time when present
- Phage (with cluster) where this start called: Juniper1_81 (F1),

Start 26:

- Found in 1 of 45 (2.2%) of genes in pham
- Manual Annotations of this start: 1 of 40
- Called 100.0% of time when present
- Phage (with cluster) where this start called: Awesomesauce_82 (F1),

Start 30:

- Found in 14 of 45 (31.1%) of genes in pham
- Manual Annotations of this start: 13 of 40
- Called 92.9% of time when present

- Phage (with cluster) where this start called: AFIS_80 (A1), Arcanine_86 (A1), Bigfoot_78 (A1), CactusRose_86 (A1), MrGordo_85 (A1), NEHalo_79 (A1), Naira_87 (A1), Nerujay_87 (A1), Ohno789_86 (A1), Peterson_82 (A1), Slagathor_83 (A1), Topgun_79 (A1), Wilkins_80 (A1),

Start 32:

- Found in 14 of 45 (31.1%) of genes in pham
- No Manual Annotations of this start.
- Called 7.1% of time when present
- Phage (with cluster) where this start called: Phlippers_81 (A1),

Summary by clusters:

There are 9 clusters represented in this pham: F1, CY1, CZ2, CZ1, CZ8, CZ4, A1, DW, CV,

Info for manual annotations of cluster A1:

- Start number 30 was manually annotated 13 times for cluster A1.

Info for manual annotations of cluster CV:

- Start number 23 was manually annotated 3 times for cluster CV.
- Start number 24 was manually annotated 5 times for cluster CV.

Info for manual annotations of cluster CY1:

- Start number 23 was manually annotated 1 time for cluster CY1.
- Start number 24 was manually annotated 2 times for cluster CY1.

Info for manual annotations of cluster CZ1:

- Start number 23 was manually annotated 1 time for cluster CZ1.

Info for manual annotations of cluster CZ2:

- Start number 24 was manually annotated 4 times for cluster CZ2.

Info for manual annotations of cluster CZ4:

- Start number 24 was manually annotated 5 times for cluster CZ4.

Info for manual annotations of cluster CZ8:

- Start number 24 was manually annotated 1 time for cluster CZ8.

Info for manual annotations of cluster DW:

- Start number 23 was manually annotated 1 time for cluster DW.
- Start number 24 was manually annotated 2 times for cluster DW.

Info for manual annotations of cluster F1:

- Start number 25 was manually annotated 1 time for cluster F1.
- Start number 26 was manually annotated 1 time for cluster F1.

Gene Information:

Gene: AFIS_80 Start: 48812, Stop: 48627, Start Num: 30

Candidate Starts for AFIS_80:

(Start: 30 @48812 has 13 MA's), (32, 48773), (36, 48683),

Gene: Agueybana_68 Start: 46255, Stop: 46509, Start Num: 23

Candidate Starts for Agueybana_68:

(4, 44902), (5, 45010), (6, 45289), (7, 45337), (9, 45385), (Start: 23 @46255 has 6 MA's), (Start: 24 @46258 has 19 MA's), (41, 46489),

Gene: Angelique_60 Start: 44414, Stop: 44665, Start Num: 24

Candidate Starts for Angelique_60:

(5, 43217), (6, 43496), (7, 43544), (8, 43577), (9, 43592), (Start: 23 @44411 has 6 MA's), (Start: 24 @44414 has 19 MA's),

Gene: Arcanine_86 Start: 49888, Stop: 49706, Start Num: 30

Candidate Starts for Arcanine_86:

(Start: 30 @49888 has 13 MA's), (32, 49849), (36, 49759),

Gene: Awesomesauce_82 Start: 50258, Stop: 50470, Start Num: 26

Candidate Starts for Awesomesauce_82:

(Start: 26 @50258 has 1 MA's),

Gene: Barco_64 Start: 41934, Stop: 42185, Start Num: 24

Candidate Starts for Barco_64:

(Start: 23 @41931 has 6 MA's), (Start: 24 @41934 has 19 MA's), (28, 41964), (31, 41988), (40, 42156),

Gene: Bigfoot_78 Start: 48202, Stop: 48020, Start Num: 30

Candidate Starts for Bigfoot_78:

(Start: 30 @48202 has 13 MA's), (32, 48163), (36, 48073),

Gene: BlingBling_63 Start: 42816, Stop: 43067, Start Num: 24

Candidate Starts for BlingBling_63:

(Start: 23 @42813 has 6 MA's), (Start: 24 @42816 has 19 MA's), (28, 42846), (31, 42870), (40, 43038),

Gene: Blino_70 Start: 47962, Stop: 48219, Start Num: 23

Candidate Starts for Blino_70:

(Start: 23 @47962 has 6 MA's), (Start: 24 @47965 has 19 MA's), (28, 47995), (31, 48019), (40, 48187),

Gene: CactusRose_86 Start: 49219, Stop: 49037, Start Num: 30

Candidate Starts for CactusRose_86:

(Start: 30 @49219 has 13 MA's), (32, 49180), (36, 49090),

Gene: CarolAnn_69 Start: 47961, Stop: 48218, Start Num: 23

Candidate Starts for CarolAnn_69:

(Start: 23 @47961 has 6 MA's), (Start: 24 @47964 has 19 MA's), (28, 47994), (31, 48018), (40, 48186),

Gene: CheeseSpider_77 Start: 45511, Stop: 45762, Start Num: 24

Candidate Starts for CheeseSpider_77:

(Start: 23 @45508 has 6 MA's), (Start: 24 @45511 has 19 MA's), (28, 45541), (31, 45565), (40, 45733),

Gene: Dolores_64 Start: 41233, Stop: 41484, Start Num: 24

Candidate Starts for Dolores_64:

(12, 40417), (15, 40513), (17, 40954), (20, 41095), (Start: 24 @41233 has 19 MA's), (29, 41266),

Gene: DumpsterDude_64 Start: 48078, Stop: 48344, Start Num: 24

Candidate Starts for DumpsterDude_64:
(21, 47952), (Start: 24 @48078 has 19 MA's), (38, 48261),

Gene: EMSquaredA_65 Start: 44845, Stop: 45096, Start Num: 24
Candidate Starts for EMSquaredA_65:
(Start: 23 @44842 has 6 MA's), (Start: 24 @44845 has 19 MA's), (28, 44875), (31, 44899), (33, 44953),
(38, 45028), (40, 45067),

Gene: Easley_61 Start: 40726, Stop: 40977, Start Num: 24
Candidate Starts for Easley_61:
(17, 40447), (20, 40588), (Start: 24 @40726 has 19 MA's), (29, 40759),

Gene: Frokostdame_69 Start: 44956, Stop: 45207, Start Num: 24
Candidate Starts for Frokostdame_69:
(Start: 24 @44956 has 19 MA's), (28, 44986), (40, 45178),

Gene: JCole_58 Start: 38579, Stop: 38830, Start Num: 24
Candidate Starts for JCole_58:
(Start: 23 @38576 has 6 MA's), (Start: 24 @38579 has 19 MA's), (28, 38609), (31, 38633), (33, 38687),
(38, 38762), (41, 38810),

Gene: Jalleen_65 Start: 40948, Stop: 41202, Start Num: 23
Candidate Starts for Jalleen_65:
(1, 39211), (2, 39526), (3, 39580), (4, 39595), (5, 39703), (6, 39982), (7, 40030), (Start: 23 @40948
has 6 MA's), (Start: 24 @40951 has 19 MA's),

Gene: JuJu_75 Start: 47323, Stop: 47577, Start Num: 23
Candidate Starts for JuJu_75:
(Start: 23 @47323 has 6 MA's), (Start: 24 @47326 has 19 MA's), (28, 47356), (31, 47380), (40, 47548),

Gene: Juniper1_81 Start: 49044, Stop: 49265, Start Num: 25
Candidate Starts for Juniper1_81:
(22, 49032), (Start: 25 @49044 has 1 MA's), (27, 49059), (35, 49194), (36, 49206), (37, 49218), (39,
49251),

Gene: Malibo_66 Start: 44636, Stop: 44890, Start Num: 23
Candidate Starts for Malibo_66:
(Start: 23 @44636 has 6 MA's), (Start: 24 @44639 has 19 MA's), (28, 44669), (31, 44693), (33, 44747),
(38, 44822),

Gene: Marteena_64 Start: 44842, Stop: 45096, Start Num: 23
Candidate Starts for Marteena_64:
(Start: 23 @44842 has 6 MA's), (Start: 24 @44845 has 19 MA's), (28, 44875), (31, 44899), (33, 44953),
(38, 45028), (40, 45067),

Gene: Mcklovin_64 Start: 47822, Stop: 48076, Start Num: 24
Candidate Starts for Mcklovin_64:
(Start: 24 @47822 has 19 MA's), (34, 47936), (38, 48005), (40, 48044), (41, 48053),

Gene: MrGordo_85 Start: 47880, Stop: 47698, Start Num: 30
Candidate Starts for MrGordo_85:
(Start: 30 @47880 has 13 MA's), (32, 47841), (36, 47751),

Gene: NEHalo_79 Start: 47622, Stop: 47437, Start Num: 30
Candidate Starts for NEHalo_79:
(Start: 30 @47622 has 13 MA's), (32, 47583), (36, 47493),

Gene: Naira_87 Start: 49559, Stop: 49377, Start Num: 30
Candidate Starts for Naira_87:
(Start: 30 @49559 has 13 MA's), (32, 49520), (36, 49430), (39, 49385),

Gene: Nerujay_87 Start: 50194, Stop: 50012, Start Num: 30
Candidate Starts for Nerujay_87:
(Start: 30 @50194 has 13 MA's), (32, 50155), (36, 50065),

Gene: Ohno789_86 Start: 49851, Stop: 49666, Start Num: 30
Candidate Starts for Ohno789_86:
(Start: 30 @49851 has 13 MA's), (32, 49812), (36, 49722),

Gene: Peterson_82 Start: 49513, Stop: 49331, Start Num: 30
Candidate Starts for Peterson_82:
(Start: 30 @49513 has 13 MA's), (32, 49474), (36, 49384),

Gene: Petra_70 Start: 43715, Stop: 43966, Start Num: 24
Candidate Starts for Petra_70:
(16, 43346), (18, 43529), (19, 43544), (Start: 24 @43715 has 19 MA's), (28, 43745), (31, 43769), (40, 43937),

Gene: Phlippers_81 Start: 49568, Stop: 49425, Start Num: 32
Candidate Starts for Phlippers_81:
(Start: 30 @49607 has 13 MA's), (32, 49568), (36, 49478),

Gene: Pickett_58 Start: 38510, Stop: 38761, Start Num: 24
Candidate Starts for Pickett_58:
(Start: 23 @38507 has 6 MA's), (Start: 24 @38510 has 19 MA's), (28, 38540), (31, 38564), (38, 38693), (41, 38741),

Gene: RavenCo17_63 Start: 45028, Stop: 45279, Start Num: 24
Candidate Starts for RavenCo17_63:
(Start: 23 @45025 has 6 MA's), (Start: 24 @45028 has 19 MA's), (28, 45058), (31, 45082), (38, 45211), (41, 45259),

Gene: Ruthy_64 Start: 46256, Stop: 46522, Start Num: 24
Candidate Starts for Ruthy_64:
(10, 45410), (11, 45419), (13, 45449), (14, 45500), (21, 46130), (Start: 24 @46256 has 19 MA's), (38, 46439),

Gene: Sahara_61 Start: 40045, Stop: 40296, Start Num: 24
Candidate Starts for Sahara_61:
(5, 38797), (6, 39076), (7, 39124), (8, 39157), (Start: 23 @40042 has 6 MA's), (Start: 24 @40045 has 19 MA's),

Gene: Sekhmet_63 Start: 41632, Stop: 41883, Start Num: 24
Candidate Starts for Sekhmet_63:
(12, 40816), (15, 40912), (17, 41353), (20, 41494), (Start: 24 @41632 has 19 MA's), (29, 41665),

Gene: Slagathor_83 Start: 49196, Stop: 49014, Start Num: 30

Candidate Starts for Slagathor_83:

(Start: 30 @49196 has 13 MA's), (32, 49157), (36, 49067),

Gene: Soilmate_72 Start: 47961, Stop: 48218, Start Num: 23

Candidate Starts for Soilmate_72:

(Start: 23 @47961 has 6 MA's), (Start: 24 @47964 has 19 MA's), (28, 47994), (31, 48018), (40, 48186),

Gene: Sprinklemunch_74 Start: 47844, Stop: 48095, Start Num: 24

Candidate Starts for Sprinklemunch_74:

(Start: 24 @47844 has 19 MA's), (29, 47877), (34, 47958), (40, 48066),

Gene: Topgun_79 Start: 46770, Stop: 46588, Start Num: 30

Candidate Starts for Topgun_79:

(Start: 30 @46770 has 13 MA's), (32, 46731), (36, 46641),

Gene: Wilkins_80 Start: 46700, Stop: 46518, Start Num: 30

Candidate Starts for Wilkins_80:

(Start: 30 @46700 has 13 MA's), (32, 46661), (36, 46571),

Gene: WinkNick_64 Start: 41156, Stop: 41407, Start Num: 24

Candidate Starts for WinkNick_64:

(12, 40340), (15, 40436), (17, 40877), (20, 41018), (Start: 24 @41156 has 19 MA's), (29, 41189),

Gene: Yeet412_59 Start: 40796, Stop: 41047, Start Num: 24

Candidate Starts for Yeet412_59:

(Start: 23 @40793 has 6 MA's), (Start: 24 @40796 has 19 MA's), (28, 40826), (31, 40850), (33, 40904), (38, 40979), (41, 41027),

Gene: Zilla_64 Start: 41951, Stop: 42202, Start Num: 24

Candidate Starts for Zilla_64:

(Start: 23 @41948 has 6 MA's), (Start: 24 @41951 has 19 MA's), (28, 41981), (31, 42005), (40, 42173),