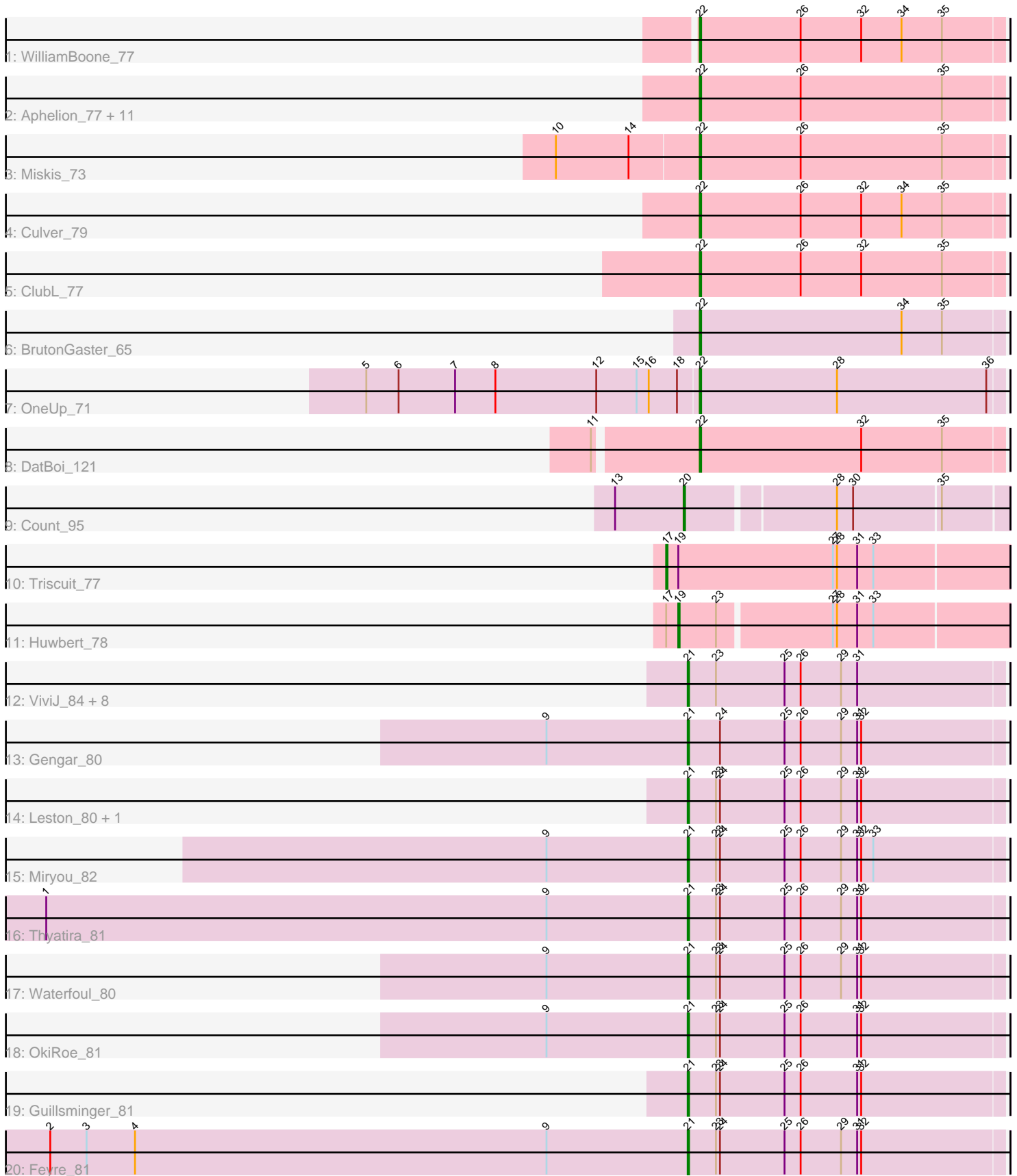


Pham 301530



Note: Tracks are now grouped by subcluster and scaled. Switching in subcluster is indicated by changes in track color. Track scale is now set by default to display the region 30 bp upstream of start 1 to 30 bp downstream of the last possible start. If this default region is judged to be packed too tightly with annotated starts, the track will be further scaled to only show that region of the ORF with annotated starts. This action will be indicated by adding "Zoomed" to the title. For starts, yellow indicates the location of called starts comprised solely of Glimmer/GeneMark auto-annotations, green indicates the location of called starts with at least 1 manual gene annotation.

Pham 301530 Report

This analysis was run 06/08/26 on database version 649.

Pham number 301530 has 40 members, 2 are drafts.

Phages represented in each track:

- Track 1 : WilliamBoone_77
- Track 2 : Aphelion_77, Toniann_78, Bachita_79, Norvs_78, Geeche_76, Smoothie_79, Cucurbita_79, PhinkBoden_77, Abscondus_77, Dusty_75, Engineer_79, Lozinak_78
- Track 3 : Miskis_73
- Track 4 : Culver_79
- Track 5 : ClubL_77
- Track 6 : BrutonGaster_65
- Track 7 : OneUp_71
- Track 8 : DatBoi_121
- Track 9 : Count_95
- Track 10 : Triscuit_77
- Track 11 : Huwbert_78
- Track 12 : ViviJ_84, BananenDer11_78, InvictusManeo_76, SoSeph_78, DoubleChamp_75, Collard_76, Heftyboy_78, Agent47_78, LilDirt_77
- Track 13 : Gengar_80
- Track 14 : Leston_80, Paola_80
- Track 15 : Miryou_82
- Track 16 : Thyatira_81
- Track 17 : Waterfoul_80
- Track 18 : OkiRoe_81
- Track 19 : Guillsminger_81
- Track 20 : Feyre_81

Summary of Final Annotations (See graph section above for start numbers):

The start number called the most often in the published annotations is 22, it was called in 18 of the 38 non-draft genes in the pham.

Genes that call this "Most Annotated" start:

- Abscondus_77, Aphelion_77, Bachita_79, BrutonGaster_65, ClubL_77, Cucurbita_79, Culver_79, DatBoi_121, Dusty_75, Engineer_79, Geeche_76, Lozinak_78, Miskis_73, Norvs_78, OneUp_71, PhinkBoden_77, Smoothie_79, Toniann_78, WilliamBoone_77,

Genes that have the "Most Annotated" start but do not call it:

-

Genes that do not have the "Most Annotated" start:

- Agent47_78, BananenDer11_78, Collard_76, Count_95, DoubleChamp_75, Feyre_81, Gengar_80, Guillsminger_81, Heftyboy_78, Huwbert_78, InvictusManeo_76, Leston_80, LilDirt_77, Miryou_82, OkiRoe_81, Paola_80, SoSeph_78, Thyatira_81, Triscuit_77, ViviJ_84, Waterfoul_80,

Summary by start number:

Start 17:

- Found in 2 of 40 (5.0%) of genes in pham
- Manual Annotations of this start: 1 of 38
- Called 50.0% of time when present
- Phage (with cluster) where this start called: Triscuit_77 (GG),

Start 19:

- Found in 2 of 40 (5.0%) of genes in pham
- Manual Annotations of this start: 1 of 38
- Called 50.0% of time when present
- Phage (with cluster) where this start called: Huwbert_78 (GG),

Start 20:

- Found in 1 of 40 (2.5%) of genes in pham
- Manual Annotations of this start: 1 of 38
- Called 100.0% of time when present
- Phage (with cluster) where this start called: Count_95 (EL),

Start 21:

- Found in 18 of 40 (45.0%) of genes in pham
- Manual Annotations of this start: 17 of 38
- Called 100.0% of time when present
- Phage (with cluster) where this start called: Agent47_78 (K5), BananenDer11_78 (K5), Collard_76 (K5), DoubleChamp_75 (K5), Feyre_81 (K5), Gengar_80 (K5), Guillsminger_81 (K5), Heftyboy_78 (K5), InvictusManeo_76 (K5), Leston_80 (K5), LilDirt_77 (K5), Miryou_82 (K5), OkiRoe_81 (K5), Paola_80 (K5), SoSeph_78 (K5), Thyatira_81 (K5), ViviJ_84 (K5), Waterfoul_80 (K5),

Start 22:

- Found in 19 of 40 (47.5%) of genes in pham
- Manual Annotations of this start: 18 of 38
- Called 100.0% of time when present
- Phage (with cluster) where this start called: Abscondus_77 (CQ1), Aphelion_77 (CQ1), Bachita_79 (CQ1), BrutonGaster_65 (CQ2), ClubL_77 (CQ1), Cucurbita_79 (CQ1), Culver_79 (CQ1), DatBoi_121 (DL), Dusty_75 (CQ1), Engineer_79 (CQ1), Geeche_76 (CQ1), Lozinak_78 (CQ1), Miskis_73 (CQ1), Norvs_78 (CQ1), OneUp_71 (CQ2), PhinkBoden_77 (CQ1), Smoothie_79 (CQ1), Toniann_78 (CQ1), WilliamBoone_77 (CQ1),

Summary by clusters:

There are 6 clusters represented in this pham: EL, DL, GG, K5, CQ2, CQ1,

Info for manual annotations of cluster CQ1:

- Start number 22 was manually annotated 15 times for cluster CQ1.

Info for manual annotations of cluster CQ2:

- Start number 22 was manually annotated 2 times for cluster CQ2.

Info for manual annotations of cluster DL:

- Start number 22 was manually annotated 1 time for cluster DL.

Info for manual annotations of cluster EL:

- Start number 20 was manually annotated 1 time for cluster EL.

Info for manual annotations of cluster GG:

- Start number 17 was manually annotated 1 time for cluster GG.
- Start number 19 was manually annotated 1 time for cluster GG.

Info for manual annotations of cluster K5:

- Start number 21 was manually annotated 17 times for cluster K5.

Gene Information:

Gene: Abscondus_77 Start: 49287, Stop: 49511, Start Num: 22

Candidate Starts for Abscondus_77:

(Start: 22 @49287 has 18 MA's), (26, 49362), (35, 49467),

Gene: Agent47_78 Start: 51521, Stop: 51754, Start Num: 21

Candidate Starts for Agent47_78:

(Start: 21 @51521 has 17 MA's), (23, 51542), (25, 51593), (26, 51605), (29, 51635), (31, 51647),

Gene: Aphelion_77 Start: 49909, Stop: 50133, Start Num: 22

Candidate Starts for Aphelion_77:

(Start: 22 @49909 has 18 MA's), (26, 49984), (35, 50089),

Gene: Bachita_79 Start: 50334, Stop: 50558, Start Num: 22

Candidate Starts for Bachita_79:

(Start: 22 @50334 has 18 MA's), (26, 50409), (35, 50514),

Gene: BananenDer11_78 Start: 51485, Stop: 51718, Start Num: 21

Candidate Starts for BananenDer11_78:

(Start: 21 @51485 has 17 MA's), (23, 51506), (25, 51557), (26, 51569), (29, 51599), (31, 51611),

Gene: BrutonGaster_65 Start: 46510, Stop: 46734, Start Num: 22

Candidate Starts for BrutonGaster_65:

(Start: 22 @46510 has 18 MA's), (34, 46660), (35, 46690),

Gene: ClubL_77 Start: 49022, Stop: 49246, Start Num: 22

Candidate Starts for ClubL_77:

(Start: 22 @49022 has 18 MA's), (26, 49097), (32, 49142), (35, 49202),

Gene: Collard_76 Start: 51485, Stop: 51718, Start Num: 21
Candidate Starts for Collard_76:
(Start: 21 @51485 has 17 MA's), (23, 51506), (25, 51557), (26, 51569), (29, 51599), (31, 51611),

Gene: Count_95 Start: 61678, Stop: 61905, Start Num: 20
Candidate Starts for Count_95:
(13, 61627), (Start: 20 @61678 has 1 MA's), (28, 61783), (30, 61795), (35, 61858),

Gene: Cucurbita_79 Start: 50841, Stop: 51065, Start Num: 22
Candidate Starts for Cucurbita_79:
(Start: 22 @50841 has 18 MA's), (26, 50916), (35, 51021),

Gene: Culver_79 Start: 48945, Stop: 49169, Start Num: 22
Candidate Starts for Culver_79:
(Start: 22 @48945 has 18 MA's), (26, 49020), (32, 49065), (34, 49095), (35, 49125),

Gene: DatBoi_121 Start: 74737, Stop: 74961, Start Num: 22
Candidate Starts for DatBoi_121:
(11, 74665), (Start: 22 @74737 has 18 MA's), (32, 74857), (35, 74917),

Gene: DoubleChamp_75 Start: 51485, Stop: 51718, Start Num: 21
Candidate Starts for DoubleChamp_75:
(Start: 21 @51485 has 17 MA's), (23, 51506), (25, 51557), (26, 51569), (29, 51599), (31, 51611),

Gene: Dusty_75 Start: 48534, Stop: 48758, Start Num: 22
Candidate Starts for Dusty_75:
(Start: 22 @48534 has 18 MA's), (26, 48609), (35, 48714),

Gene: Engineer_79 Start: 50307, Stop: 50531, Start Num: 22
Candidate Starts for Engineer_79:
(Start: 22 @50307 has 18 MA's), (26, 50382), (35, 50487),

Gene: Feyre_81 Start: 55182, Stop: 55415, Start Num: 21
Candidate Starts for Feyre_81:
(2, 54708), (3, 54735), (4, 54771), (9, 55077), (Start: 21 @55182 has 17 MA's), (23, 55203), (24, 55206), (25, 55254), (26, 55266), (29, 55296), (31, 55308), (32, 55311),

Gene: Geeche_76 Start: 49371, Stop: 49595, Start Num: 22
Candidate Starts for Geeche_76:
(Start: 22 @49371 has 18 MA's), (26, 49446), (35, 49551),

Gene: Gengar_80 Start: 53997, Stop: 54230, Start Num: 21
Candidate Starts for Gengar_80:
(9, 53892), (Start: 21 @53997 has 17 MA's), (24, 54021), (25, 54069), (26, 54081), (29, 54111), (31, 54123), (32, 54126),

Gene: Guillsminger_81 Start: 53845, Stop: 54078, Start Num: 21
Candidate Starts for Guillsminger_81:
(Start: 21 @53845 has 17 MA's), (23, 53866), (24, 53869), (25, 53917), (26, 53929), (31, 53971), (32, 53974),

Gene: Heftyboy_78 Start: 53212, Stop: 53445, Start Num: 21
Candidate Starts for Heftyboy_78:

(Start: 21 @53212 has 17 MA's), (23, 53233), (25, 53284), (26, 53296), (29, 53326), (31, 53338),

Gene: Huwbert_78 Start: 48165, Stop: 48401, Start Num: 19

Candidate Starts for Huwbert_78:

(Start: 17 @48156 has 1 MA's), (Start: 19 @48165 has 1 MA's), (23, 48192), (27, 48273), (28, 48276), (31, 48291), (33, 48303),

Gene: InvictusManeo_76 Start: 51525, Stop: 51758, Start Num: 21

Candidate Starts for InvictusManeo_76:

(Start: 21 @51525 has 17 MA's), (23, 51546), (25, 51597), (26, 51609), (29, 51639), (31, 51651),

Gene: Leston_80 Start: 53962, Stop: 54195, Start Num: 21

Candidate Starts for Leston_80:

(Start: 21 @53962 has 17 MA's), (23, 53983), (24, 53986), (25, 54034), (26, 54046), (29, 54076), (31, 54088), (32, 54091),

Gene: LilDirt_77 Start: 51286, Stop: 51519, Start Num: 21

Candidate Starts for LilDirt_77:

(Start: 21 @51286 has 17 MA's), (23, 51307), (25, 51358), (26, 51370), (29, 51400), (31, 51412),

Gene: Lozinak_78 Start: 50145, Stop: 50369, Start Num: 22

Candidate Starts for Lozinak_78:

(Start: 22 @50145 has 18 MA's), (26, 50220), (35, 50325),

Gene: Miryou_82 Start: 55820, Stop: 56053, Start Num: 21

Candidate Starts for Miryou_82:

(9, 55715), (Start: 21 @55820 has 17 MA's), (23, 55841), (24, 55844), (25, 55892), (26, 55904), (29, 55934), (31, 55946), (32, 55949), (33, 55958),

Gene: Miskis_73 Start: 48618, Stop: 48842, Start Num: 22

Candidate Starts for Miskis_73:

(10, 48513), (14, 48567), (Start: 22 @48618 has 18 MA's), (26, 48693), (35, 48798),

Gene: Norvs_78 Start: 49554, Stop: 49778, Start Num: 22

Candidate Starts for Norvs_78:

(Start: 22 @49554 has 18 MA's), (26, 49629), (35, 49734),

Gene: OkiRoe_81 Start: 54960, Stop: 55193, Start Num: 21

Candidate Starts for OkiRoe_81:

(9, 54855), (Start: 21 @54960 has 17 MA's), (23, 54981), (24, 54984), (25, 55032), (26, 55044), (31, 55086), (32, 55089),

Gene: OneUp_71 Start: 48247, Stop: 48471, Start Num: 22

Candidate Starts for OneUp_71:

(5, 48001), (6, 48025), (7, 48067), (8, 48097), (12, 48172), (15, 48202), (16, 48211), (18, 48232), (Start: 22 @48247 has 18 MA's), (28, 48349), (36, 48460),

Gene: Paola_80 Start: 53845, Stop: 54078, Start Num: 21

Candidate Starts for Paola_80:

(Start: 21 @53845 has 17 MA's), (23, 53866), (24, 53869), (25, 53917), (26, 53929), (29, 53959), (31, 53971), (32, 53974),

Gene: PhinkBoden_77 Start: 49935, Stop: 50159, Start Num: 22

Candidate Starts for PhinkBoden_77:
(Start: 22 @49935 has 18 MA's), (26, 50010), (35, 50115),

Gene: Smoothie_79 Start: 50145, Stop: 50369, Start Num: 22
Candidate Starts for Smoothie_79:
(Start: 22 @50145 has 18 MA's), (26, 50220), (35, 50325),

Gene: SoSeph_78 Start: 53212, Stop: 53445, Start Num: 21
Candidate Starts for SoSeph_78:
(Start: 21 @53212 has 17 MA's), (23, 53233), (25, 53284), (26, 53296), (29, 53326), (31, 53338),

Gene: Thyatira_81 Start: 55557, Stop: 55790, Start Num: 21
Candidate Starts for Thyatira_81:
(1, 55080), (9, 55452), (Start: 21 @55557 has 17 MA's), (23, 55578), (24, 55581), (25, 55629), (26, 55641), (29, 55671), (31, 55683), (32, 55686),

Gene: Toniann_78 Start: 49497, Stop: 49721, Start Num: 22
Candidate Starts for Toniann_78:
(Start: 22 @49497 has 18 MA's), (26, 49572), (35, 49677),

Gene: Triscuit_77 Start: 48116, Stop: 48367, Start Num: 17
Candidate Starts for Triscuit_77:
(Start: 17 @48116 has 1 MA's), (Start: 19 @48125 has 1 MA's), (27, 48239), (28, 48242), (31, 48257), (33, 48269),

Gene: ViviJ_84 Start: 53574, Stop: 53807, Start Num: 21
Candidate Starts for ViviJ_84:
(Start: 21 @53574 has 17 MA's), (23, 53595), (25, 53646), (26, 53658), (29, 53688), (31, 53700),

Gene: Waterfoul_80 Start: 53627, Stop: 53860, Start Num: 21
Candidate Starts for Waterfoul_80:
(9, 53522), (Start: 21 @53627 has 17 MA's), (23, 53648), (24, 53651), (25, 53699), (26, 53711), (29, 53741), (31, 53753), (32, 53756),

Gene: WilliamBoone_77 Start: 48245, Stop: 48469, Start Num: 22
Candidate Starts for WilliamBoone_77:
(Start: 22 @48245 has 18 MA's), (26, 48320), (32, 48365), (34, 48395), (35, 48425),