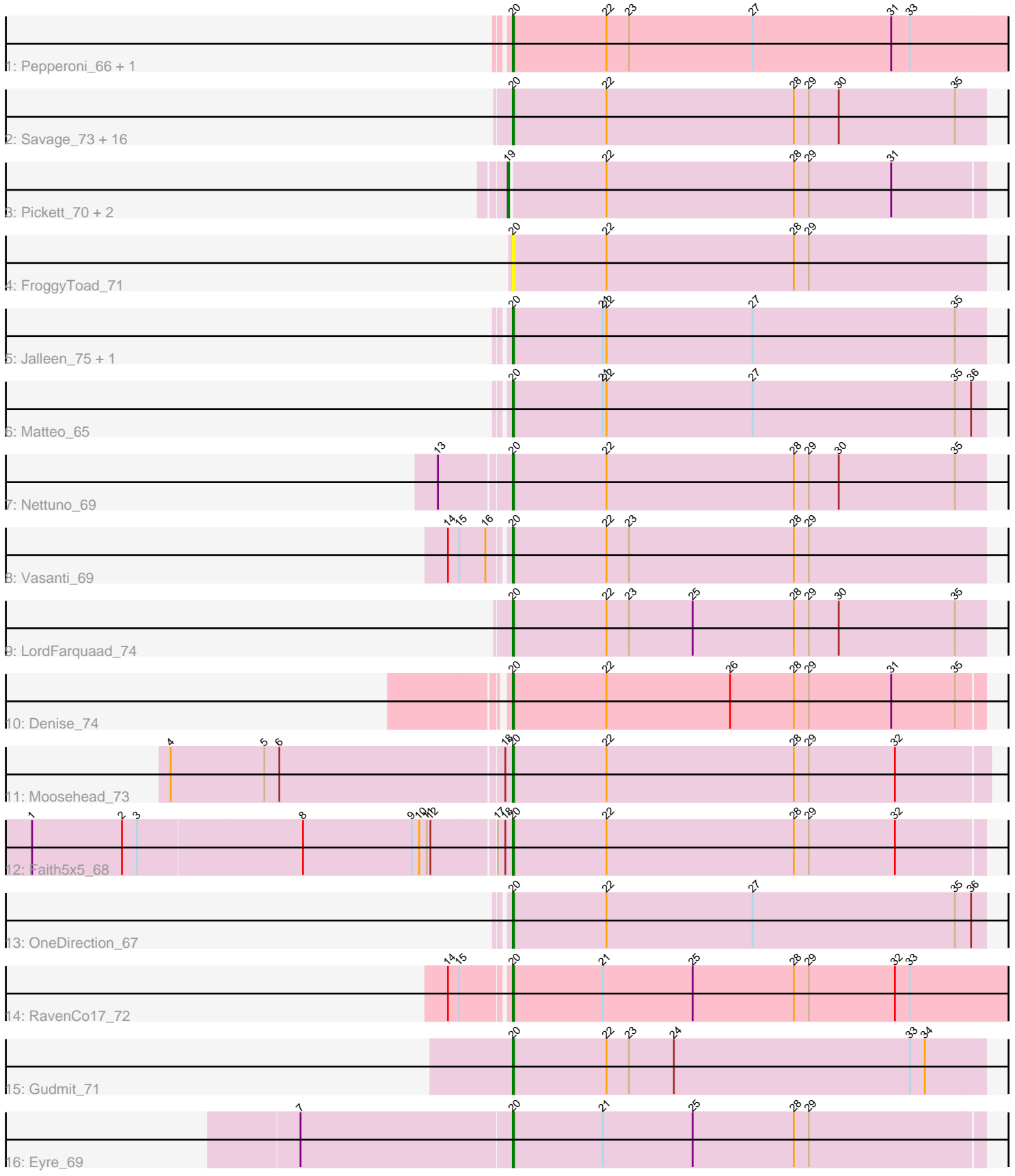


Pham 301576



Note: Tracks are now grouped by subcluster and scaled. Switching in subcluster is indicated by changes in track color. Track scale is now set by default to display the region 30 bp upstream of start 1 to 30 bp downstream of the last possible start. If this default region is judged to be packed too tightly with annotated starts, the track will be further scaled to only show that region of the ORF with annotated starts. This action will be indicated by adding "Zoomed" to the title. For starts, yellow indicates the location of called starts comprised solely of Glimmer/GeneMark auto-annotations, green indicates the location of called starts with at least 1 manual gene annotation.

Pham 301576 Report

This analysis was run 06/08/26 on database version 649.

Pham number 301576 has 36 members, 3 are drafts.

Phages represented in each track:

- Track 1 : Pepperoni_66, Lton_70
- Track 2 : Savage_73, Yinzer_73, Whiteclaw_73, Cynthia_73, SoilAssassin_72, Haley23_73, GemG_73, Clap_73, TuertoX_73, Ebert_76, Gizermo_73, Attis_72, Yeet412_71, Bjanes7_70, Lamberg_69, Mocha12_73, Sproutie_73
- Track 3 : Pickett_70, JCole_70, EdnaMode_72
- Track 4 : FroggyToad_71
- Track 5 : Jalleen_75, Sahara_70
- Track 6 : Matteo_65
- Track 7 : Nettuno_69
- Track 8 : Vasanti_69
- Track 9 : LordFarquaad_74
- Track 10 : Denise_74
- Track 11 : Moosehead_73
- Track 12 : Faith5x5_68
- Track 13 : OneDirection_67
- Track 14 : RavenCo17_72
- Track 15 : Gudmit_71
- Track 16 : Eyre_69

Summary of Final Annotations (See graph section above for start numbers):

The start number called the most often in the published annotations is 20, it was called in 30 of the 33 non-draft genes in the pham.

Genes that call this "Most Annotated" start:

- Attis_72, Bjanes7_70, Clap_73, Cynthia_73, Denise_74, Ebert_76, Eyre_69, Faith5x5_68, FroggyToad_71, GemG_73, Gizermo_73, Gudmit_71, Haley23_73, Jalleen_75, Lamberg_69, LordFarquaad_74, Lton_70, Matteo_65, Mocha12_73, Moosehead_73, Nettuno_69, OneDirection_67, Pepperoni_66, RavenCo17_72, Sahara_70, Savage_73, SoilAssassin_72, Sproutie_73, TuertoX_73, Vasanti_69, Whiteclaw_73, Yeet412_71, Yinzer_73,

Genes that have the "Most Annotated" start but do not call it:

-

Genes that do not have the "Most Annotated" start:

- EdnaMode_72, JCole_70, Pickett_70,

Summary by start number:

Start 19:

- Found in 3 of 36 (8.3%) of genes in pham
- Manual Annotations of this start: 3 of 33
- Called 100.0% of time when present
- Phage (with cluster) where this start called: EdnaMode_72 (CZ2), JCole_70 (CZ2), Pickett_70 (CZ2),

Start 20:

- Found in 33 of 36 (91.7%) of genes in pham
- Manual Annotations of this start: 30 of 33
- Called 100.0% of time when present
- Phage (with cluster) where this start called: Attis_72 (CZ2), Bjanes7_70 (CZ2), Clap_73 (CZ2), Cynthia_73 (CZ2), Denise_74 (CZ5), Ebert_76 (CZ2), Eyre_69 (singleton), Faith5x5_68 (CZ6), FroggyToad_71 (CZ2), GemG_73 (CZ2), Gizermo_73 (CZ2), Gudmit_71 (singleton), Haley23_73 (CZ2), Jalleen_75 (CZ2), Lamberg_69 (CZ2), LordFarquaad_74 (CZ2), Lton_70 (CZ), Matteo_65 (CZ2), Mocha12_73 (CZ2), Moosehead_73 (CZ6), Nettuno_69 (CZ2), OneDirection_67 (CZ6), Pepperoni_66 (CZ), RavenCo17_72 (CZ8), Sahara_70 (CZ2), Savage_73 (CZ2), SoilAssassin_72 (CZ2), Sproutie_73 (CZ2), TuertoX_73 (CZ2), Vasanti_69 (CZ2), Whiteclaw_73 (CZ2), Yeet412_71 (CZ2), Yinzer_73 (CZ2),

Summary by clusters:

There are 6 clusters represented in this pham: CZ8, CZ2, CZ6, singleton, CZ5, CZ,

Info for manual annotations of cluster CZ:

- Start number 20 was manually annotated 2 times for cluster CZ.

Info for manual annotations of cluster CZ2:

- Start number 19 was manually annotated 3 times for cluster CZ2.
- Start number 20 was manually annotated 21 times for cluster CZ2.

Info for manual annotations of cluster CZ5:

- Start number 20 was manually annotated 1 time for cluster CZ5.

Info for manual annotations of cluster CZ6:

- Start number 20 was manually annotated 3 times for cluster CZ6.

Info for manual annotations of cluster CZ8:

- Start number 20 was manually annotated 1 time for cluster CZ8.

Gene Information:

Gene: Attis_72 Start: 46801, Stop: 47178, Start Num: 20

Candidate Starts for Attis_72:

(Start: 20 @46801 has 30 MA's), (22, 46876), (28, 47026), (29, 47038), (30, 47062), (35, 47155),

Gene: Bjaner7_70 Start: 44962, Stop: 45339, Start Num: 20

Candidate Starts for Bjaner7_70:

(Start: 20 @44962 has 30 MA's), (22, 45037), (28, 45187), (29, 45199), (30, 45223), (35, 45316),

Gene: Clap_73 Start: 45141, Stop: 45518, Start Num: 20

Candidate Starts for Clap_73:

(Start: 20 @45141 has 30 MA's), (22, 45216), (28, 45366), (29, 45378), (30, 45402), (35, 45495),

Gene: Cynthia_73 Start: 45139, Stop: 45516, Start Num: 20

Candidate Starts for Cynthia_73:

(Start: 20 @45139 has 30 MA's), (22, 45214), (28, 45364), (29, 45376), (30, 45400), (35, 45493),

Gene: Denise_74 Start: 43284, Stop: 43658, Start Num: 20

Candidate Starts for Denise_74:

(Start: 20 @43284 has 30 MA's), (22, 43359), (26, 43458), (28, 43509), (29, 43521), (31, 43587), (35, 43638),

Gene: Ebert_76 Start: 45573, Stop: 45950, Start Num: 20

Candidate Starts for Ebert_76:

(Start: 20 @45573 has 30 MA's), (22, 45648), (28, 45798), (29, 45810), (30, 45834), (35, 45927),

Gene: EdnaMode_72 Start: 45249, Stop: 45623, Start Num: 19

Candidate Starts for EdnaMode_72:

(Start: 19 @45249 has 3 MA's), (22, 45324), (28, 45474), (29, 45486), (31, 45552),

Gene: Eyre_69 Start: 42878, Stop: 43252, Start Num: 20

Candidate Starts for Eyre_69:

(7, 42710), (Start: 20 @42878 has 30 MA's), (21, 42950), (25, 43022), (28, 43103), (29, 43115),

Gene: Faith5x5_68 Start: 40359, Stop: 40733, Start Num: 20

Candidate Starts for Faith5x5_68:

(1, 39984), (2, 40056), (3, 40068), (8, 40197), (9, 40284), (10, 40290), (11, 40296), (12, 40299), (17, 40347), (18, 40353), (Start: 20 @40359 has 30 MA's), (22, 40434), (28, 40584), (29, 40596), (32, 40665),

Gene: FroggyToad_71 Start: 45486, Stop: 45863, Start Num: 20

Candidate Starts for FroggyToad_71:

(Start: 20 @45486 has 30 MA's), (22, 45561), (28, 45711), (29, 45723),

Gene: GemG_73 Start: 45145, Stop: 45522, Start Num: 20

Candidate Starts for GemG_73:

(Start: 20 @45145 has 30 MA's), (22, 45220), (28, 45370), (29, 45382), (30, 45406), (35, 45499),

Gene: Gizermo_73 Start: 45141, Stop: 45518, Start Num: 20

Candidate Starts for Gizermo_73:

(Start: 20 @45141 has 30 MA's), (22, 45216), (28, 45366), (29, 45378), (30, 45402), (35, 45495),

Gene: Gudmit_71 Start: 40988, Stop: 41365, Start Num: 20

Candidate Starts for Gudmit_71:

(Start: 20 @40988 has 30 MA's), (22, 41063), (23, 41081), (24, 41117), (33, 41306), (34, 41318),

Gene: Haley23_73 Start: 45141, Stop: 45518, Start Num: 20
Candidate Starts for Haley23_73:
(Start: 20 @45141 has 30 MA's), (22, 45216), (28, 45366), (29, 45378), (30, 45402), (35, 45495),

Gene: JCole_70 Start: 43811, Stop: 44185, Start Num: 19
Candidate Starts for JCole_70:
(Start: 19 @43811 has 3 MA's), (22, 43886), (28, 44036), (29, 44048), (31, 44114),

Gene: Jalleen_75 Start: 44898, Stop: 45275, Start Num: 20
Candidate Starts for Jalleen_75:
(Start: 20 @44898 has 30 MA's), (21, 44970), (22, 44973), (27, 45090), (35, 45252),

Gene: Lamberg_69 Start: 43650, Stop: 44027, Start Num: 20
Candidate Starts for Lamberg_69:
(Start: 20 @43650 has 30 MA's), (22, 43725), (28, 43875), (29, 43887), (30, 43911), (35, 44004),

Gene: LordFarquaad_74 Start: 46783, Stop: 47160, Start Num: 20
Candidate Starts for LordFarquaad_74:
(Start: 20 @46783 has 30 MA's), (22, 46858), (23, 46876), (25, 46927), (28, 47008), (29, 47020), (30, 47044), (35, 47137),

Gene: Lton_70 Start: 40369, Stop: 40767, Start Num: 20
Candidate Starts for Lton_70:
(Start: 20 @40369 has 30 MA's), (22, 40444), (23, 40462), (27, 40561), (31, 40672), (33, 40687),

Gene: Matteo_65 Start: 42712, Stop: 43089, Start Num: 20
Candidate Starts for Matteo_65:
(Start: 20 @42712 has 30 MA's), (21, 42784), (22, 42787), (27, 42904), (35, 43066), (36, 43078),

Gene: Mocha12_73 Start: 45141, Stop: 45518, Start Num: 20
Candidate Starts for Mocha12_73:
(Start: 20 @45141 has 30 MA's), (22, 45216), (28, 45366), (29, 45378), (30, 45402), (35, 45495),

Gene: Moosehead_73 Start: 40905, Stop: 41282, Start Num: 20
Candidate Starts for Moosehead_73:
(4, 40638), (5, 40713), (6, 40725), (18, 40899), (Start: 20 @40905 has 30 MA's), (22, 40980), (28, 41130), (29, 41142), (32, 41211),

Gene: Nettuno_69 Start: 43448, Stop: 43825, Start Num: 20
Candidate Starts for Nettuno_69:
(13, 43394), (Start: 20 @43448 has 30 MA's), (22, 43523), (28, 43673), (29, 43685), (30, 43709), (35, 43802),

Gene: OneDirection_67 Start: 38931, Stop: 39308, Start Num: 20
Candidate Starts for OneDirection_67:
(Start: 20 @38931 has 30 MA's), (22, 39006), (27, 39123), (35, 39285), (36, 39297),

Gene: Pepperoni_66 Start: 40057, Stop: 40455, Start Num: 20
Candidate Starts for Pepperoni_66:
(Start: 20 @40057 has 30 MA's), (22, 40132), (23, 40150), (27, 40249), (31, 40360), (33, 40375),

Gene: Pickett_70 Start: 43854, Stop: 44228, Start Num: 19
Candidate Starts for Pickett_70:

(Start: 19 @43854 has 3 MA's), (22, 43929), (28, 44079), (29, 44091), (31, 44157),

Gene: RavenCo17_72 Start: 48487, Stop: 48933, Start Num: 20

Candidate Starts for RavenCo17_72:

(14, 48442), (15, 48451), (Start: 20 @48487 has 30 MA's), (21, 48559), (25, 48631), (28, 48712), (29, 48724), (32, 48793), (33, 48805),

Gene: Sahara_70 Start: 43992, Stop: 44369, Start Num: 20

Candidate Starts for Sahara_70:

(Start: 20 @43992 has 30 MA's), (21, 44064), (22, 44067), (27, 44184), (35, 44346),

Gene: Savage_73 Start: 45141, Stop: 45518, Start Num: 20

Candidate Starts for Savage_73:

(Start: 20 @45141 has 30 MA's), (22, 45216), (28, 45366), (29, 45378), (30, 45402), (35, 45495),

Gene: SoilAssassin_72 Start: 46800, Stop: 47177, Start Num: 20

Candidate Starts for SoilAssassin_72:

(Start: 20 @46800 has 30 MA's), (22, 46875), (28, 47025), (29, 47037), (30, 47061), (35, 47154),

Gene: Sproutie_73 Start: 45141, Stop: 45518, Start Num: 20

Candidate Starts for Sproutie_73:

(Start: 20 @45141 has 30 MA's), (22, 45216), (28, 45366), (29, 45378), (30, 45402), (35, 45495),

Gene: TuertoX_73 Start: 45141, Stop: 45518, Start Num: 20

Candidate Starts for TuertoX_73:

(Start: 20 @45141 has 30 MA's), (22, 45216), (28, 45366), (29, 45378), (30, 45402), (35, 45495),

Gene: Vasanti_69 Start: 45382, Stop: 45759, Start Num: 20

Candidate Starts for Vasanti_69:

(14, 45337), (15, 45346), (16, 45367), (Start: 20 @45382 has 30 MA's), (22, 45457), (23, 45475), (28, 45607), (29, 45619),

Gene: Whiteclaw_73 Start: 45141, Stop: 45518, Start Num: 20

Candidate Starts for Whiteclaw_73:

(Start: 20 @45141 has 30 MA's), (22, 45216), (28, 45366), (29, 45378), (30, 45402), (35, 45495),

Gene: Yeet412_71 Start: 45604, Stop: 45981, Start Num: 20

Candidate Starts for Yeet412_71:

(Start: 20 @45604 has 30 MA's), (22, 45679), (28, 45829), (29, 45841), (30, 45865), (35, 45958),

Gene: Yinzer_73 Start: 45141, Stop: 45518, Start Num: 20

Candidate Starts for Yinzer_73:

(Start: 20 @45141 has 30 MA's), (22, 45216), (28, 45366), (29, 45378), (30, 45402), (35, 45495),