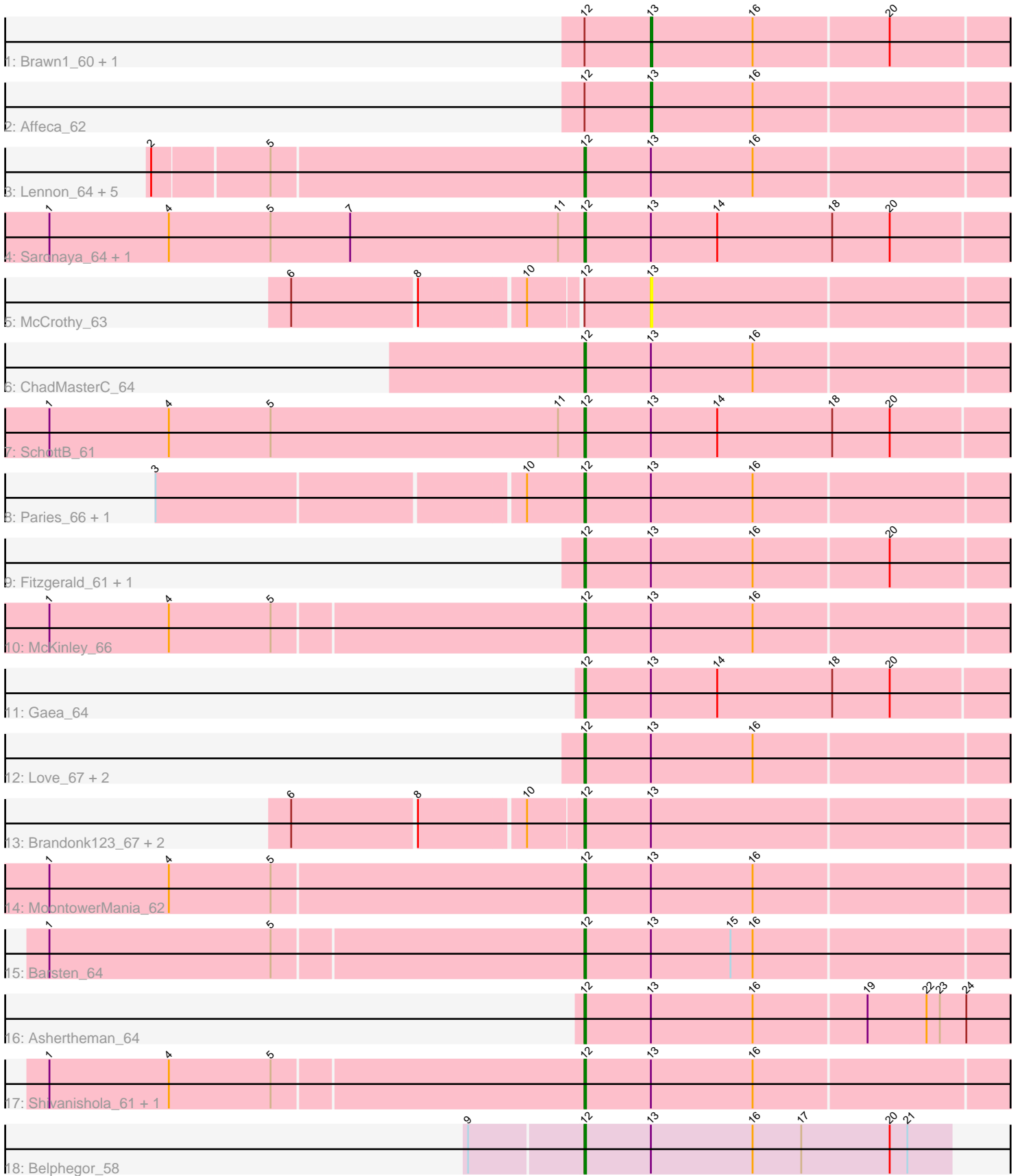


Pham 301606



Note: Tracks are now grouped by subcluster and scaled. Switching in subcluster is indicated by changes in track color. Track scale is now set by default to display the region 30 bp upstream of start 1 to 30 bp downstream of the last possible start. If this default region is judged to be packed too tightly with annotated starts, the track will be further scaled to only show that region of the ORF with annotated starts. This action will be indicated by adding "Zoomed" to the title. For starts, yellow indicates the location of called starts comprised solely of Glimmer/GeneMark auto-annotations, green indicates the location of called starts with at least 1 manual gene annotation.

## Pham 301606 Report

This analysis was run 06/08/26 on database version 649.

Pham number 301606 has 32 members, 2 are drafts.

Phages represented in each track:

- Track 1 : Brawn1\_60, Sanjuju\_62
- Track 2 : Affeca\_62
- Track 3 : Lennon\_64, Geodirt\_63, Sitar\_64, Keitabear\_63, Stultus\_60, Kewpiedoll\_63
- Track 4 : Saronaya\_64, Gustavo\_64
- Track 5 : McCrothy\_63
- Track 6 : ChadMasterC\_64
- Track 7 : SchottB\_61
- Track 8 : Paries\_66, Galadriel\_63
- Track 9 : Fitzgerald\_61, Jabberwocky\_61
- Track 10 : McKinley\_66
- Track 11 : Gaea\_64
- Track 12 : Love\_67, RiverRaider\_64, Sedona\_63
- Track 13 : Brandonk123\_67, Kamashten\_62, Thing3\_62
- Track 14 : MoontowerMania\_62
- Track 15 : Barsten\_64
- Track 16 : Ashertheman\_64
- Track 17 : Shivanishola\_61, Angelicage\_61
- Track 18 : Belphegor\_58

### ***Summary of Final Annotations (See graph section above for start numbers):***

The start number called the most often in the published annotations is 12, it was called in 28 of the 30 non-draft genes in the pham.

Genes that call this "Most Annotated" start:

- Angelicage\_61, Ashertheman\_64, Barsten\_64, Belphegor\_58, Brandonk123\_67, ChadMasterC\_64, Fitzgerald\_61, Gaea\_64, Galadriel\_63, Geodirt\_63, Gustavo\_64, Jabberwocky\_61, Kamashten\_62, Keitabear\_63, Kewpiedoll\_63, Lennon\_64, Love\_67, McKinley\_66, MoontowerMania\_62, Paries\_66, RiverRaider\_64, Saronaya\_64, SchottB\_61, Sedona\_63, Shivanishola\_61, Sitar\_64, Stultus\_60, Thing3\_62,

Genes that have the "Most Annotated" start but do not call it:

- Affeca\_62, Brawn1\_60, McCrothy\_63, Sanjuju\_62,

Genes that do not have the "Most Annotated" start:

- 

### Summary by start number:

Start 12:

- Found in 32 of 32 ( 100.0% ) of genes in pham
- Manual Annotations of this start: 28 of 30
- Called 87.5% of time when present
- Phage (with cluster) where this start called: Angelicage\_61 (DE1), Ashertheman\_64 (DE1), Barsten\_64 (DE1), Belphegor\_58 (DE2), Brandonk123\_67 (DE1), ChadMasterC\_64 (DE1), Fitzgerald\_61 (DE1), Gaea\_64 (DE1), Galadriel\_63 (DE1), Geodirt\_63 (DE1), Gustavo\_64 (DE1), Jabberwocky\_61 (DE1), Kamashten\_62 (DE1), Keitabear\_63 (DE1), Kewpiedoll\_63 (DE1), Lennon\_64 (DE1), Love\_67 (DE1), McKinley\_66 (DE1), MoontowerMania\_62 (DE1), Paries\_66 (DE1), RiverRaider\_64 (DE1), Saronaya\_64 (DE1), SchottB\_61 (DE1), Sedona\_63 (DE1), Shivanishola\_61 (DE1), Sitar\_64 (DE1), Stultus\_60 (DE1), Thing3\_62 (DE1),

Start 13:

- Found in 32 of 32 ( 100.0% ) of genes in pham
- Manual Annotations of this start: 2 of 30
- Called 12.5% of time when present
- Phage (with cluster) where this start called: Affeca\_62 (DE1), Brawn1\_60 (DE1), McCrothy\_63 (DE1), Sanjuju\_62 (DE1),

### Summary by clusters:

There are 2 clusters represented in this pham: DE1, DE2,

Info for manual annotations of cluster DE1:

- Start number 12 was manually annotated 27 times for cluster DE1.
- Start number 13 was manually annotated 2 times for cluster DE1.

Info for manual annotations of cluster DE2:

- Start number 12 was manually annotated 1 time for cluster DE2.

### Gene Information:

Gene: Affeca\_62 Start: 50082, Stop: 50321, Start Num: 13

Candidate Starts for Affeca\_62:

(Start: 12 @50037 has 28 MA's), (Start: 13 @50082 has 2 MA's), (16, 50151),

Gene: Angelicage\_61 Start: 49989, Stop: 50273, Start Num: 12

Candidate Starts for Angelicage\_61:

(1, 49632), (4, 49713), (5, 49779), (Start: 12 @49989 has 28 MA's), (Start: 13 @50034 has 2 MA's), (16, 50103),

Gene: Ashertheman\_64 Start: 49167, Stop: 49451, Start Num: 12

Candidate Starts for Ashertheman\_64:

(Start: 12 @49167 has 28 MA's), (Start: 13 @49212 has 2 MA's), (16, 49281), (19, 49356), (22, 49395), (23, 49404), (24, 49422),

Gene: Barsten\_64 Start: 50125, Stop: 50409, Start Num: 12

Candidate Starts for Barsten\_64:

(1, 49768), (5, 49918), (Start: 12 @50125 has 28 MA's), (Start: 13 @50170 has 2 MA's), (15, 50224), (16, 50239),

Gene: Belphegor\_58 Start: 47990, Stop: 48238, Start Num: 12

Candidate Starts for Belphegor\_58:

(9, 47918), (Start: 12 @47990 has 28 MA's), (Start: 13 @48035 has 2 MA's), (16, 48104), (17, 48137), (20, 48197), (21, 48209),

Gene: Brandonk123\_67 Start: 49918, Stop: 50202, Start Num: 12

Candidate Starts for Brandonk123\_67:

(6, 49735), (8, 49816), (10, 49885), (Start: 12 @49918 has 28 MA's), (Start: 13 @49963 has 2 MA's),

Gene: Brawn1\_60 Start: 49372, Stop: 49611, Start Num: 13

Candidate Starts for Brawn1\_60:

(Start: 12 @49327 has 28 MA's), (Start: 13 @49372 has 2 MA's), (16, 49441), (20, 49531),

Gene: ChadMasterC\_64 Start: 51638, Stop: 51922, Start Num: 12

Candidate Starts for ChadMasterC\_64:

(Start: 12 @51638 has 28 MA's), (Start: 13 @51683 has 2 MA's), (16, 51752),

Gene: Fitzgerald\_61 Start: 50359, Stop: 50643, Start Num: 12

Candidate Starts for Fitzgerald\_61:

(Start: 12 @50359 has 28 MA's), (Start: 13 @50404 has 2 MA's), (16, 50473), (20, 50563),

Gene: Gaea\_64 Start: 48940, Stop: 49224, Start Num: 12

Candidate Starts for Gaea\_64:

(Start: 12 @48940 has 28 MA's), (Start: 13 @48985 has 2 MA's), (14, 49030), (18, 49108), (20, 49147),

Gene: Galadriel\_63 Start: 50552, Stop: 50836, Start Num: 12

Candidate Starts for Galadriel\_63:

(3, 50273), (10, 50513), (Start: 12 @50552 has 28 MA's), (Start: 13 @50597 has 2 MA's), (16, 50666),

Gene: Geodirt\_63 Start: 50703, Stop: 50987, Start Num: 12

Candidate Starts for Geodirt\_63:

(2, 50418), (5, 50493), (Start: 12 @50703 has 28 MA's), (Start: 13 @50748 has 2 MA's), (16, 50817),

Gene: Gustavo\_64 Start: 49613, Stop: 49897, Start Num: 12

Candidate Starts for Gustavo\_64:

(1, 49250), (4, 49331), (5, 49400), (7, 49454), (11, 49595), (Start: 12 @49613 has 28 MA's), (Start: 13 @49658 has 2 MA's), (14, 49703), (18, 49781), (20, 49820),

Gene: Jabberwocky\_61 Start: 50593, Stop: 50877, Start Num: 12

Candidate Starts for Jabberwocky\_61:

(Start: 12 @50593 has 28 MA's), (Start: 13 @50638 has 2 MA's), (16, 50707), (20, 50797),

Gene: Kamashten\_62 Start: 49351, Stop: 49635, Start Num: 12

Candidate Starts for Kamashten\_62:

(6, 49168), (8, 49249), (10, 49318), (Start: 12 @49351 has 28 MA's), (Start: 13 @49396 has 2 MA's),

Gene: Keitabear\_63 Start: 51257, Stop: 51541, Start Num: 12  
Candidate Starts for Keitabear\_63:  
(2, 50972), (5, 51047), (Start: 12 @51257 has 28 MA's), (Start: 13 @51302 has 2 MA's), (16, 51371),

Gene: Kewpiedoll\_63 Start: 50615, Stop: 50899, Start Num: 12  
Candidate Starts for Kewpiedoll\_63:  
(2, 50330), (5, 50405), (Start: 12 @50615 has 28 MA's), (Start: 13 @50660 has 2 MA's), (16, 50729),

Gene: Lennon\_64 Start: 51406, Stop: 51690, Start Num: 12  
Candidate Starts for Lennon\_64:  
(2, 51121), (5, 51196), (Start: 12 @51406 has 28 MA's), (Start: 13 @51451 has 2 MA's), (16, 51520),

Gene: Love\_67 Start: 50477, Stop: 50761, Start Num: 12  
Candidate Starts for Love\_67:  
(Start: 12 @50477 has 28 MA's), (Start: 13 @50522 has 2 MA's), (16, 50591),

Gene: McCrothy\_63 Start: 51182, Stop: 51421, Start Num: 13  
Candidate Starts for McCrothy\_63:  
(6, 50954), (8, 51035), (10, 51104), (Start: 12 @51137 has 28 MA's), (Start: 13 @51182 has 2 MA's),

Gene: McKinley\_66 Start: 50477, Stop: 50761, Start Num: 12  
Candidate Starts for McKinley\_66:  
(1, 50120), (4, 50201), (5, 50270), (Start: 12 @50477 has 28 MA's), (Start: 13 @50522 has 2 MA's),  
(16, 50591),

Gene: MoontowerMania\_62 Start: 50638, Stop: 50922, Start Num: 12  
Candidate Starts for MoontowerMania\_62:  
(1, 50278), (4, 50359), (5, 50428), (Start: 12 @50638 has 28 MA's), (Start: 13 @50683 has 2 MA's),  
(16, 50752),

Gene: Paries\_66 Start: 50738, Stop: 51022, Start Num: 12  
Candidate Starts for Paries\_66:  
(3, 50459), (10, 50699), (Start: 12 @50738 has 28 MA's), (Start: 13 @50783 has 2 MA's), (16, 50852),

Gene: RiverRaider\_64 Start: 48088, Stop: 48372, Start Num: 12  
Candidate Starts for RiverRaider\_64:  
(Start: 12 @48088 has 28 MA's), (Start: 13 @48133 has 2 MA's), (16, 48202),

Gene: Sanjuju\_62 Start: 50536, Stop: 50775, Start Num: 13  
Candidate Starts for Sanjuju\_62:  
(Start: 12 @50491 has 28 MA's), (Start: 13 @50536 has 2 MA's), (16, 50605), (20, 50695),

Gene: Saronaya\_64 Start: 49613, Stop: 49897, Start Num: 12  
Candidate Starts for Saronaya\_64:  
(1, 49250), (4, 49331), (5, 49400), (7, 49454), (11, 49595), (Start: 12 @49613 has 28 MA's), (Start: 13 @49658 has 2 MA's), (14, 49703), (18, 49781), (20, 49820),

Gene: SchottB\_61 Start: 49523, Stop: 49807, Start Num: 12  
Candidate Starts for SchottB\_61:  
(1, 49160), (4, 49241), (5, 49310), (11, 49505), (Start: 12 @49523 has 28 MA's), (Start: 13 @49568 has 2 MA's), (14, 49613), (18, 49691), (20, 49730),

Gene: Sedona\_63 Start: 51205, Stop: 51489, Start Num: 12  
Candidate Starts for Sedona\_63:  
(Start: 12 @51205 has 28 MA's), (Start: 13 @51250 has 2 MA's), (16, 51319),

Gene: Shivanishola\_61 Start: 48244, Stop: 48528, Start Num: 12  
Candidate Starts for Shivanishola\_61:  
(1, 47887), (4, 47968), (5, 48037), (Start: 12 @48244 has 28 MA's), (Start: 13 @48289 has 2 MA's),  
(16, 48358),

Gene: Sitar\_64 Start: 51115, Stop: 51399, Start Num: 12  
Candidate Starts for Sitar\_64:  
(2, 50830), (5, 50905), (Start: 12 @51115 has 28 MA's), (Start: 13 @51160 has 2 MA's), (16, 51229),

Gene: Stultus\_60 Start: 49377, Stop: 49661, Start Num: 12  
Candidate Starts for Stultus\_60:  
(2, 49092), (5, 49167), (Start: 12 @49377 has 28 MA's), (Start: 13 @49422 has 2 MA's), (16, 49491),

Gene: Thing3\_62 Start: 49351, Stop: 49635, Start Num: 12  
Candidate Starts for Thing3\_62:  
(6, 49168), (8, 49249), (10, 49318), (Start: 12 @49351 has 28 MA's), (Start: 13 @49396 has 2 MA's),