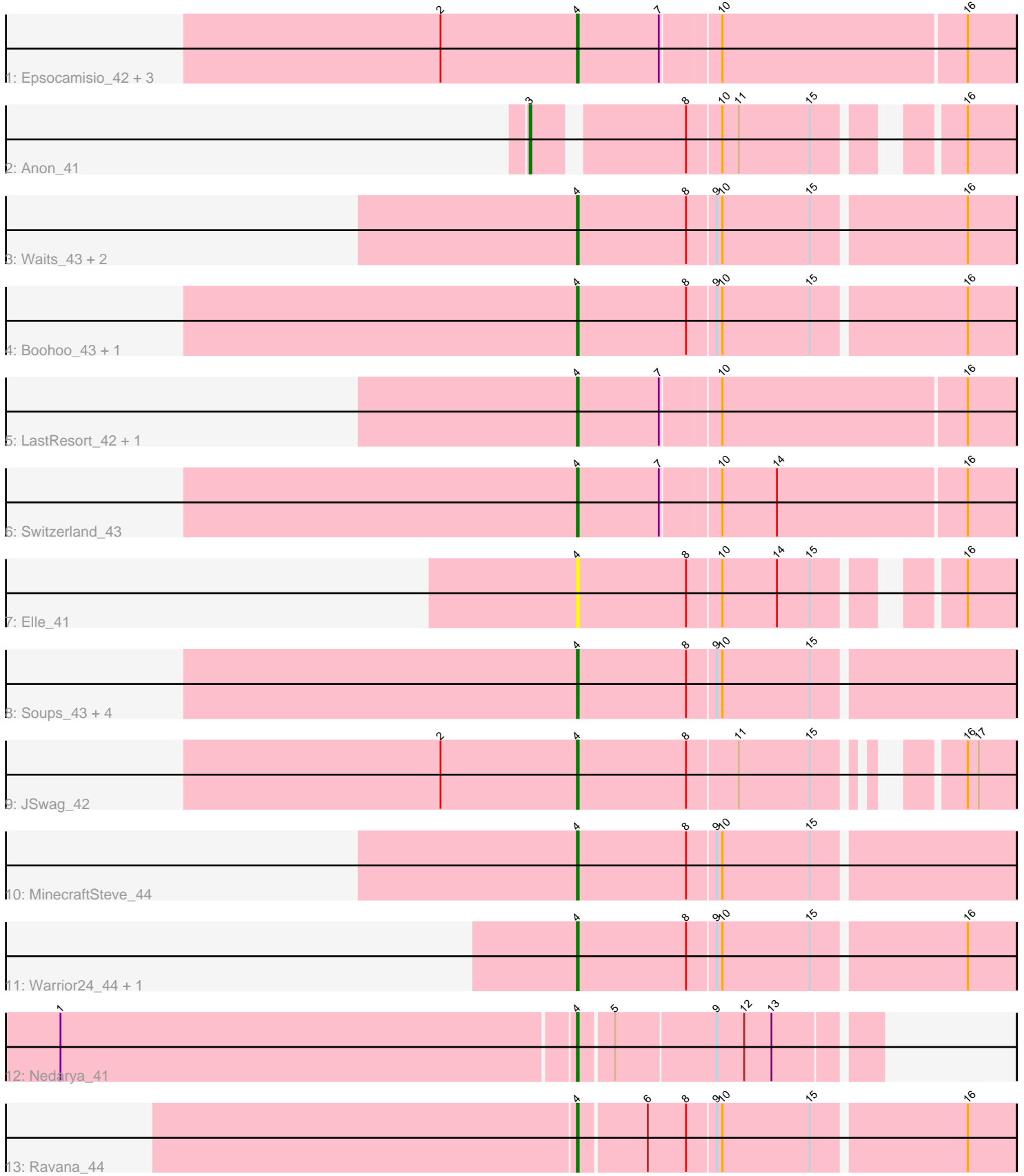


Pham 301698



Note: Tracks are now grouped by subcluster and scaled. Switching in subcluster is indicated by changes in track color. Track scale is now set by default to display the region 30 bp upstream of start 1 to 30 bp downstream of the last possible start. If this default region is judged to be packed too tightly with annotated starts, the track will be further scaled to only show that region of the ORF with annotated starts. This action will be indicated by adding "Zoomed" to the title. For starts, yellow indicates the location of called starts comprised solely of Glimmer/GeneMark auto-annotations, green indicates the location of called starts with at least 1 manual gene annotation.

## Pham 301698 Report

This analysis was run 06/08/26 on database version 649.

Pham number 301698 has 25 members, 1 are drafts.

Phages represented in each track:

- Track 1 : Epsocamisio\_42, Nebulosus\_42, Rosalind\_42, Looper\_43
- Track 2 : Anon\_41
- Track 3 : Waits\_43, Remus\_44, Strosahl\_44
- Track 4 : Boohoo\_43, Anaysia\_43
- Track 5 : LastResort\_42, ReMo\_42
- Track 6 : Switzerland\_43
- Track 7 : Elle\_41
- Track 8 : Soups\_43, KatherineG\_44, ShayRa\_44, Battleship\_44, DekHockey33\_43
- Track 9 : JSwag\_42
- Track 10 : MinecraftSteve\_44
- Track 11 : Warrior24\_44, Oofda\_43
- Track 12 : Nedarya\_41
- Track 13 : Ravana\_44

### ***Summary of Final Annotations (See graph section above for start numbers):***

The start number called the most often in the published annotations is 4, it was called in 23 of the 24 non-draft genes in the pham.

Genes that call this "Most Annotated" start:

- Anaysia\_43, Battleship\_44, Boohoo\_43, DekHockey33\_43, Elle\_41, Epsocamisio\_42, JSwag\_42, KatherineG\_44, LastResort\_42, Looper\_43, MinecraftSteve\_44, Nebulosus\_42, Nedarya\_41, Oofda\_43, Ravana\_44, ReMo\_42, Remus\_44, Rosalind\_42, ShayRa\_44, Soups\_43, Strosahl\_44, Switzerland\_43, Waits\_43, Warrior24\_44,

Genes that have the "Most Annotated" start but do not call it:

- 

Genes that do not have the "Most Annotated" start:

- Anon\_41,

### **Summary by start number:**

#### Start 3:

- Found in 1 of 25 ( 4.0% ) of genes in pham
- Manual Annotations of this start: 1 of 24
- Called 100.0% of time when present
- Phage (with cluster) where this start called: Anon\_41 (A15),

#### Start 4:

- Found in 24 of 25 ( 96.0% ) of genes in pham
- Manual Annotations of this start: 23 of 24
- Called 100.0% of time when present
- Phage (with cluster) where this start called: Anaysia\_43 (A15), Battleship\_44 (A15), Boohoo\_43 (A15), DekHockey33\_43 (A15), Elle\_41 (A15), Epsocamisio\_42 (A15), JSwag\_42 (A15), KatherineG\_44 (A15), LastResort\_42 (A15), Looper\_43 (A15), MinecraftSteve\_44 (A15), Nebulosus\_42 (A15), Nedarya\_41 (A15), Oofda\_43 (A15), Ravana\_44 (A15), ReMo\_42 (A15), Remus\_44 (A15), Rosalind\_42 (A15), ShayRa\_44 (A15), Soups\_43 (A15), Strosahl\_44 (A15), Switzerland\_43 (A15), Waits\_43 (A15), Warrior24\_44 (A15),

#### Summary by clusters:

There is one cluster represented in this pham: A15

Info for manual annotations of cluster A15:

- Start number 3 was manually annotated 1 time for cluster A15.
- Start number 4 was manually annotated 23 times for cluster A15.

#### **Gene Information:**

Gene: Anaysia\_43 Start: 27246, Stop: 27013, Start Num: 4

Candidate Starts for Anaysia\_43:

(Start: 4 @27246 has 23 MA's), (8, 27186), (9, 27171), (10, 27168), (15, 27120), (16, 27039),

Gene: Anon\_41 Start: 27208, Stop: 26981, Start Num: 3

Candidate Starts for Anon\_41:

(Start: 3 @27208 has 1 MA's), (8, 27133), (10, 27115), (11, 27106), (15, 27067), (16, 27007),

Gene: Battleship\_44 Start: 27215, Stop: 26982, Start Num: 4

Candidate Starts for Battleship\_44:

(Start: 4 @27215 has 23 MA's), (8, 27155), (9, 27140), (10, 27137), (15, 27089),

Gene: Boohoo\_43 Start: 27246, Stop: 27013, Start Num: 4

Candidate Starts for Boohoo\_43:

(Start: 4 @27246 has 23 MA's), (8, 27186), (9, 27171), (10, 27168), (15, 27120), (16, 27039),

Gene: DekHockey33\_43 Start: 27461, Stop: 27228, Start Num: 4

Candidate Starts for DekHockey33\_43:

(Start: 4 @27461 has 23 MA's), (8, 27401), (9, 27386), (10, 27383), (15, 27335),

Gene: Elle\_41 Start: 26373, Stop: 26161, Start Num: 4

Candidate Starts for Elle\_41:

(Start: 4 @26373 has 23 MA's), (8, 26313), (10, 26295), (14, 26265), (15, 26247), (16, 26187),

Gene: Epsocamisio\_42 Start: 27020, Stop: 26787, Start Num: 4

Candidate Starts for Epsocamisio\_42:

(2, 27095), (Start: 4 @27020 has 23 MA's), (7, 26975), (10, 26945), (16, 26813),

Gene: JSwag\_42 Start: 26958, Stop: 26752, Start Num: 4

Candidate Starts for JSwag\_42:

(2, 27033), (Start: 4 @26958 has 23 MA's), (8, 26898), (11, 26871), (15, 26832), (16, 26778), (17, 26772),

Gene: KatherineG\_44 Start: 27461, Stop: 27228, Start Num: 4

Candidate Starts for KatherineG\_44:

(Start: 4 @27461 has 23 MA's), (8, 27401), (9, 27386), (10, 27383), (15, 27335),

Gene: LastResort\_42 Start: 27022, Stop: 26789, Start Num: 4

Candidate Starts for LastResort\_42:

(Start: 4 @27022 has 23 MA's), (7, 26977), (10, 26947), (16, 26815),

Gene: Looper\_43 Start: 26999, Stop: 26766, Start Num: 4

Candidate Starts for Looper\_43:

(2, 27074), (Start: 4 @26999 has 23 MA's), (7, 26954), (10, 26924), (16, 26792),

Gene: MinecraftSteve\_44 Start: 27222, Stop: 26989, Start Num: 4

Candidate Starts for MinecraftSteve\_44:

(Start: 4 @27222 has 23 MA's), (8, 27162), (9, 27147), (10, 27144), (15, 27096),

Gene: Nebulosus\_42 Start: 27018, Stop: 26785, Start Num: 4

Candidate Starts for Nebulosus\_42:

(2, 27093), (Start: 4 @27018 has 23 MA's), (7, 26973), (10, 26943), (16, 26811),

Gene: Nedarya\_41 Start: 27466, Stop: 27311, Start Num: 4

Candidate Starts for Nedarya\_41:

(1, 27745), (Start: 4 @27466 has 23 MA's), (5, 27448), (9, 27394), (12, 27379), (13, 27364),

Gene: Oofda\_43 Start: 27117, Stop: 26884, Start Num: 4

Candidate Starts for Oofda\_43:

(Start: 4 @27117 has 23 MA's), (8, 27057), (9, 27042), (10, 27039), (15, 26991), (16, 26910),

Gene: Ravana\_44 Start: 27345, Stop: 27115, Start Num: 4

Candidate Starts for Ravana\_44:

(Start: 4 @27345 has 23 MA's), (6, 27309), (8, 27288), (9, 27273), (10, 27270), (15, 27222), (16, 27141),

Gene: ReMo\_42 Start: 27019, Stop: 26786, Start Num: 4

Candidate Starts for ReMo\_42:

(Start: 4 @27019 has 23 MA's), (7, 26974), (10, 26944), (16, 26812),

Gene: Remus\_44 Start: 27381, Stop: 27148, Start Num: 4

Candidate Starts for Remus\_44:

(Start: 4 @27381 has 23 MA's), (8, 27321), (9, 27306), (10, 27303), (15, 27255), (16, 27174),

Gene: Rosalind\_42 Start: 27141, Stop: 26908, Start Num: 4

Candidate Starts for Rosalind\_42:

(2, 27216), (Start: 4 @27141 has 23 MA's), (7, 27096), (10, 27066), (16, 26934),

Gene: ShayRa\_44 Start: 27223, Stop: 26990, Start Num: 4

Candidate Starts for ShayRa\_44:

(Start: 4 @27223 has 23 MA's), (8, 27163), (9, 27148), (10, 27145), (15, 27097),

Gene: Soups\_43 Start: 27222, Stop: 26989, Start Num: 4

Candidate Starts for Soups\_43:

(Start: 4 @27222 has 23 MA's), (8, 27162), (9, 27147), (10, 27144), (15, 27096),

Gene: Strosahl\_44 Start: 27381, Stop: 27148, Start Num: 4

Candidate Starts for Strosahl\_44:

(Start: 4 @27381 has 23 MA's), (8, 27321), (9, 27306), (10, 27303), (15, 27255), (16, 27174),

Gene: Switzerland\_43 Start: 27321, Stop: 27088, Start Num: 4

Candidate Starts for Switzerland\_43:

(Start: 4 @27321 has 23 MA's), (7, 27276), (10, 27246), (14, 27216), (16, 27114),

Gene: Waits\_43 Start: 27114, Stop: 26881, Start Num: 4

Candidate Starts for Waits\_43:

(Start: 4 @27114 has 23 MA's), (8, 27054), (9, 27039), (10, 27036), (15, 26988), (16, 26907),

Gene: Warrior24\_44 Start: 27301, Stop: 27068, Start Num: 4

Candidate Starts for Warrior24\_44:

(Start: 4 @27301 has 23 MA's), (8, 27241), (9, 27226), (10, 27223), (15, 27175), (16, 27094),