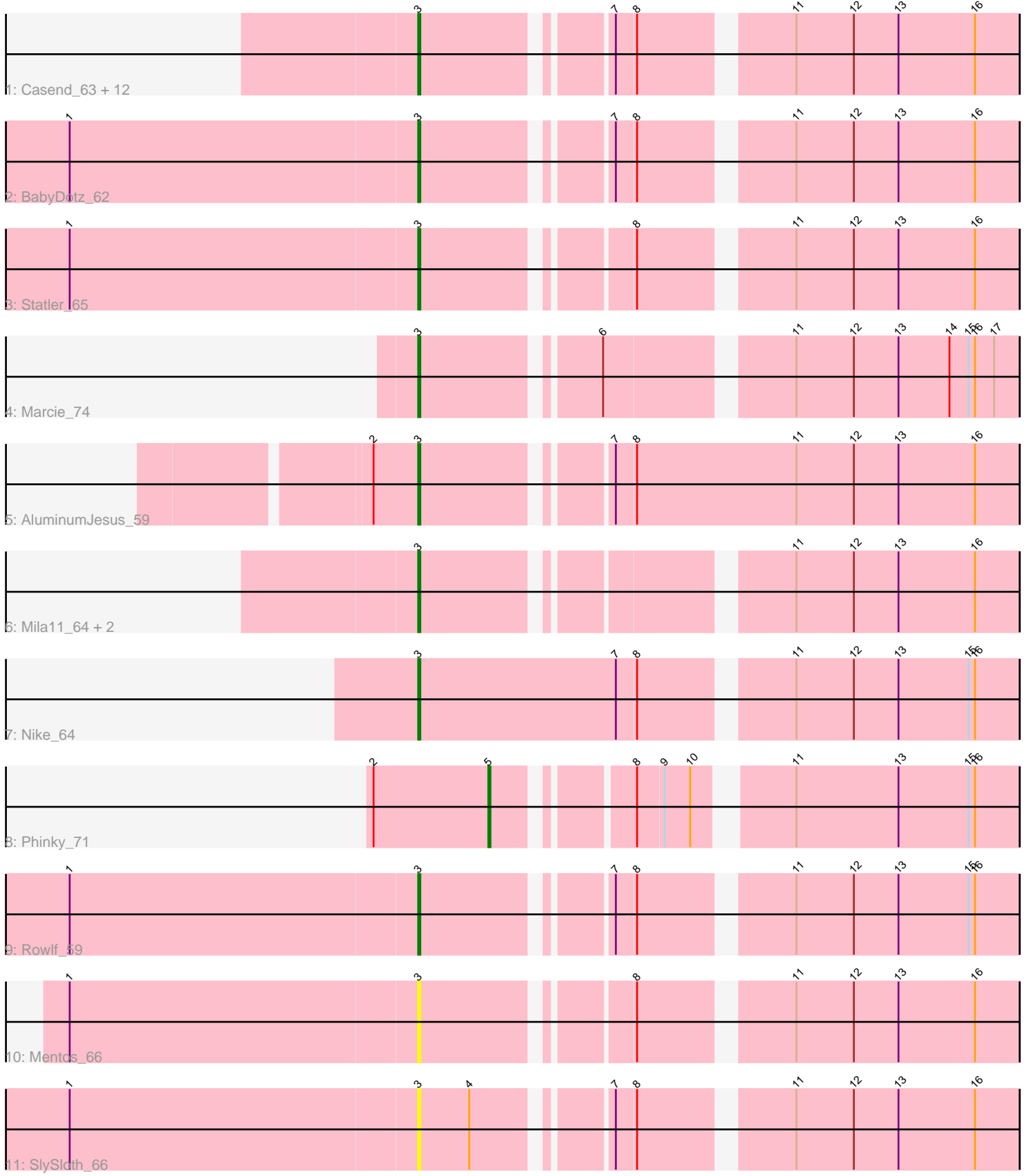


Pham 301704



1: Casend\_63 + 12

2: BabyDotz\_62

3: Statler\_65

4: Marcie\_74

5: AluminumJesus\_59

6: Mila11\_64 + 2

7: Nike\_64

8: Phinky\_71

9: Rowlf\_69

10: Mentos\_66

11: SlySlath\_66

Note: Tracks are now grouped by subcluster and scaled. Switching in subcluster is indicated by changes in track color. Track scale is now set by default to display the region 30 bp upstream of start 1 to 30 bp downstream of the last possible start. If this default region is judged to be packed too tightly with annotated starts, the track will be further scaled to only show that region of the ORF with annotated starts. This action will be indicated by adding "Zoomed" to the title. For starts, yellow indicates the location of called starts comprised solely of Glimmer/GeneMark auto-annotations, green indicates the location of called starts with at least 1 manual gene annotation.

## Pham 301704 Report

This analysis was run 06/08/26 on database version 649.

Pham number 301704 has 25 members, 4 are drafts.

Phages represented in each track:

- Track 1 : Casend\_63, Teehee\_63, Zhafia\_65, Jehoshaphat\_64, Llemily\_62, Sillytadpoles\_63, Phabia\_62, DonaldDuck\_62, Quammi\_60, Viceroy\_61, Wheelie\_62, Rudy\_60, Wayne3\_64
- Track 2 : BabyDotz\_62
- Track 3 : Statler\_65
- Track 4 : Marcie\_74
- Track 5 : AluminumJesus\_59
- Track 6 : Mila11\_64, MorillMayhem\_64, BaconCheese\_66
- Track 7 : Nike\_64
- Track 8 : Phinky\_71
- Track 9 : Rowlf\_59
- Track 10 : Mentos\_66
- Track 11 : SlySloth\_66

### ***Summary of Final Annotations (See graph section above for start numbers):***

The start number called the most often in the published annotations is 3, it was called in 20 of the 21 non-draft genes in the pham.

Genes that call this "Most Annotated" start:

- AluminumJesus\_59, BabyDotz\_62, BaconCheese\_66, Casend\_63, DonaldDuck\_62, Jehoshaphat\_64, Llemily\_62, Marcie\_74, Mentos\_66, Mila11\_64, MorillMayhem\_64, Nike\_64, Phabia\_62, Quammi\_60, Rowlf\_59, Rudy\_60, Sillytadpoles\_63, SlySloth\_66, Statler\_65, Teehee\_63, Viceroy\_61, Wayne3\_64, Wheelie\_62, Zhafia\_65,

Genes that have the "Most Annotated" start but do not call it:

- 

Genes that do not have the "Most Annotated" start:

- Phinky\_71,

### **Summary by start number:**

#### Start 3:

- Found in 24 of 25 ( 96.0% ) of genes in pham
- Manual Annotations of this start: 20 of 21
- Called 100.0% of time when present
- Phage (with cluster) where this start called: AluminumJesus\_59 (EG), BabyDotz\_62 (EG), BaconCheese\_66 (EG), Casend\_63 (EG), DonaldDuck\_62 (EG), Jehoshaphat\_64 (EG), Lemily\_62 (EG), Marcie\_74 (EG), Mentos\_66 (EG), Mila11\_64 (EG), MorillMayhem\_64 (EG), Nike\_64 (EG), Phabia\_62 (EG), Quammi\_60 (EG), Rowlf\_59 (EG), Rudy\_60 (EG), Sillytadpoles\_63 (EG), SlySloth\_66 (EG), Statler\_65 (EG), Teehee\_63 (EG), Viceroy\_61 (EG), Wayne3\_64 (EG), Wheelie\_62 (EG), Zhafia\_65 (EG),

#### Start 5:

- Found in 1 of 25 ( 4.0% ) of genes in pham
- Manual Annotations of this start: 1 of 21
- Called 100.0% of time when present
- Phage (with cluster) where this start called: Phinky\_71 (EG),

### Summary by clusters:

There is one cluster represented in this pham: EG

Info for manual annotations of cluster EG:

- Start number 3 was manually annotated 20 times for cluster EG.
- Start number 5 was manually annotated 1 time for cluster EG.

### **Gene Information:**

Gene: AluminumJesus\_59 Start: 43763, Stop: 43497, Start Num: 3

Candidate Starts for AluminumJesus\_59:

(2, 43784), (Start: 3 @43763 has 20 MA's), (7, 43685), (8, 43676), (11, 43601), (12, 43574), (13, 43553), (16, 43517),

Gene: BabyDotz\_62 Start: 45150, Stop: 44896, Start Num: 3

Candidate Starts for BabyDotz\_62:

(1, 45312), (Start: 3 @45150 has 20 MA's), (7, 45072), (8, 45063), (11, 45000), (12, 44973), (13, 44952), (16, 44916),

Gene: BaconCheese\_66 Start: 45756, Stop: 45502, Start Num: 3

Candidate Starts for BaconCheese\_66:

(Start: 3 @45756 has 20 MA's), (11, 45606), (12, 45579), (13, 45558), (16, 45522),

Gene: Casend\_63 Start: 44669, Stop: 44415, Start Num: 3

Candidate Starts for Casend\_63:

(Start: 3 @44669 has 20 MA's), (7, 44591), (8, 44582), (11, 44519), (12, 44492), (13, 44471), (16, 44435),

Gene: DonaldDuck\_62 Start: 44018, Stop: 43764, Start Num: 3

Candidate Starts for DonaldDuck\_62:

(Start: 3 @44018 has 20 MA's), (7, 43940), (8, 43931), (11, 43868), (12, 43841), (13, 43820), (16, 43784),

Gene: Jehoshaphat\_64 Start: 44937, Stop: 44683, Start Num: 3

Candidate Starts for Jehoshaphat\_64:

(Start: 3 @44937 has 20 MA's), (7, 44859), (8, 44850), (11, 44787), (12, 44760), (13, 44739), (16, 44703),

Gene: Llemily\_62 Start: 43713, Stop: 43459, Start Num: 3

Candidate Starts for Llemily\_62:

(Start: 3 @43713 has 20 MA's), (7, 43635), (8, 43626), (11, 43563), (12, 43536), (13, 43515), (16, 43479),

Gene: Marcie\_74 Start: 45324, Stop: 45067, Start Num: 3

Candidate Starts for Marcie\_74:

(Start: 3 @45324 has 20 MA's), (6, 45249), (11, 45171), (12, 45144), (13, 45123), (14, 45099), (15, 45090), (16, 45087), (17, 45078),

Gene: Mentos\_66 Start: 45555, Stop: 45301, Start Num: 3

Candidate Starts for Mentos\_66:

(1, 45717), (Start: 3 @45555 has 20 MA's), (8, 45468), (11, 45405), (12, 45378), (13, 45357), (16, 45321),

Gene: Mila11\_64 Start: 45814, Stop: 45560, Start Num: 3

Candidate Starts for Mila11\_64:

(Start: 3 @45814 has 20 MA's), (11, 45664), (12, 45637), (13, 45616), (16, 45580),

Gene: MorillMayhem\_64 Start: 44825, Stop: 44571, Start Num: 3

Candidate Starts for MorillMayhem\_64:

(Start: 3 @44825 has 20 MA's), (11, 44675), (12, 44648), (13, 44627), (16, 44591),

Gene: Nike\_64 Start: 45316, Stop: 45047, Start Num: 3

Candidate Starts for Nike\_64:

(Start: 3 @45316 has 20 MA's), (7, 45223), (8, 45214), (11, 45151), (12, 45124), (13, 45103), (15, 45070), (16, 45067),

Gene: Phabia\_62 Start: 44128, Stop: 43874, Start Num: 3

Candidate Starts for Phabia\_62:

(Start: 3 @44128 has 20 MA's), (7, 44050), (8, 44041), (11, 43978), (12, 43951), (13, 43930), (16, 43894),

Gene: Phinky\_71 Start: 46185, Stop: 45967, Start Num: 5

Candidate Starts for Phinky\_71:

(2, 46239), (Start: 5 @46185 has 1 MA's), (8, 46131), (9, 46119), (10, 46107), (11, 46071), (13, 46023), (15, 45990), (16, 45987),

Gene: Quammi\_60 Start: 43828, Stop: 43574, Start Num: 3

Candidate Starts for Quammi\_60:

(Start: 3 @43828 has 20 MA's), (7, 43750), (8, 43741), (11, 43678), (12, 43651), (13, 43630), (16, 43594),

Gene: Rowlf\_59 Start: 43771, Stop: 43517, Start Num: 3

Candidate Starts for Rowlf\_59:

(1, 43933), (Start: 3 @43771 has 20 MA's), (7, 43693), (8, 43684), (11, 43621), (12, 43594), (13, 43573), (15, 43540), (16, 43537),

Gene: Rudy\_60 Start: 43864, Stop: 43610, Start Num: 3

Candidate Starts for Rudy\_60:

(Start: 3 @43864 has 20 MA's), (7, 43786), (8, 43777), (11, 43714), (12, 43687), (13, 43666), (16, 43630),

Gene: Sillytadpoles\_63 Start: 43701, Stop: 43447, Start Num: 3

Candidate Starts for Sillytadpoles\_63:

(Start: 3 @43701 has 20 MA's), (7, 43623), (8, 43614), (11, 43551), (12, 43524), (13, 43503), (16, 43467),

Gene: SlySloth\_66 Start: 44418, Stop: 44164, Start Num: 3

Candidate Starts for SlySloth\_66:

(1, 44580), (Start: 3 @44418 has 20 MA's), (4, 44394), (7, 44340), (8, 44331), (11, 44268), (12, 44241), (13, 44220), (16, 44184),

Gene: Statler\_65 Start: 44487, Stop: 44233, Start Num: 3

Candidate Starts for Statler\_65:

(1, 44649), (Start: 3 @44487 has 20 MA's), (8, 44400), (11, 44337), (12, 44310), (13, 44289), (16, 44253),

Gene: Teehee\_63 Start: 44934, Stop: 44680, Start Num: 3

Candidate Starts for Teehee\_63:

(Start: 3 @44934 has 20 MA's), (7, 44856), (8, 44847), (11, 44784), (12, 44757), (13, 44736), (16, 44700),

Gene: Viceroy\_61 Start: 43834, Stop: 43580, Start Num: 3

Candidate Starts for Viceroy\_61:

(Start: 3 @43834 has 20 MA's), (7, 43756), (8, 43747), (11, 43684), (12, 43657), (13, 43636), (16, 43600),

Gene: Wayne3\_64 Start: 44697, Stop: 44443, Start Num: 3

Candidate Starts for Wayne3\_64:

(Start: 3 @44697 has 20 MA's), (7, 44619), (8, 44610), (11, 44547), (12, 44520), (13, 44499), (16, 44463),

Gene: Wheelie\_62 Start: 44018, Stop: 43764, Start Num: 3

Candidate Starts for Wheelie\_62:

(Start: 3 @44018 has 20 MA's), (7, 43940), (8, 43931), (11, 43868), (12, 43841), (13, 43820), (16, 43784),

Gene: Zhafia\_65 Start: 44498, Stop: 44244, Start Num: 3

Candidate Starts for Zhafia\_65:

(Start: 3 @44498 has 20 MA's), (7, 44420), (8, 44411), (11, 44348), (12, 44321), (13, 44300), (16, 44264),