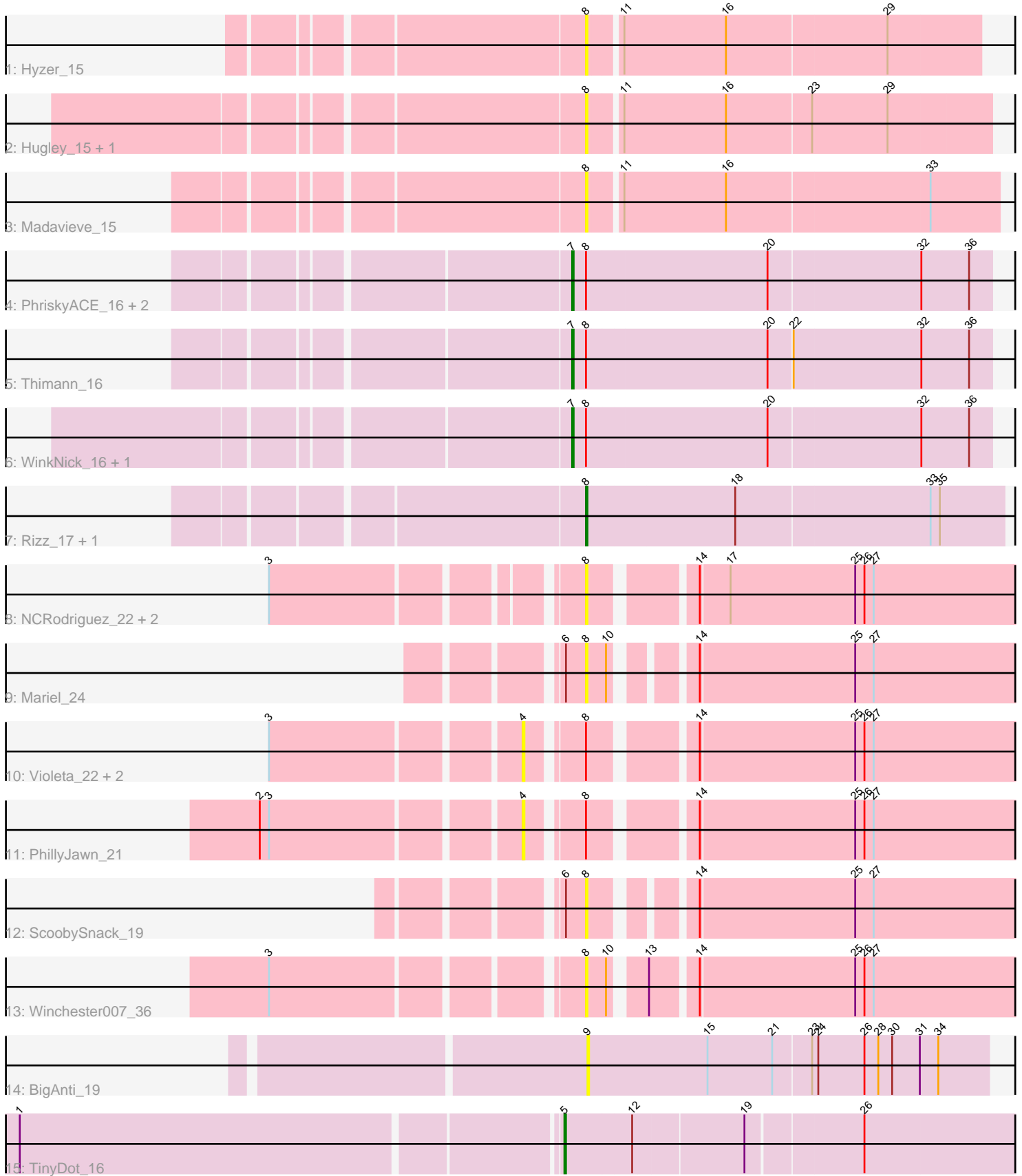


Pham 301712



Note: Tracks are now grouped by subcluster and scaled. Switching in subcluster is indicated by changes in track color. Track scale is now set by default to display the region 30 bp upstream of start 1 to 30 bp downstream of the last possible start. If this default region is judged to be packed too tightly with annotated starts, the track will be further scaled to only show that region of the ORF with annotated starts. This action will be indicated by adding "Zoomed" to the title. For starts, yellow indicates the location of called starts comprised solely of Glimmer/GeneMark auto-annotations, green indicates the location of called starts with at least 1 manual gene annotation.

Pham 301712 Report

This analysis was run 06/08/26 on database version 649.

Pham number 301712 has 24 members, 16 are drafts.

Phages represented in each track:

- Track 1 : Hyzer_15
- Track 2 : Hugley_15, SushiChef_15
- Track 3 : Madavieve_15
- Track 4 : PhriskyACE_16, Dorito_15, Annalisa_16
- Track 5 : Thimann_16
- Track 6 : WinkNick_16, DobbysSock_15
- Track 7 : Rizz_17, Tuti_17
- Track 8 : NCRodriguez_22, Phingu_23, Jakelyne_23
- Track 9 : Mariel_24
- Track 10 : Violeta_22, Carrillo_22, Guzman_22
- Track 11 : PhillyJawn_21
- Track 12 : ScoobySnack_19
- Track 13 : Winchester007_36
- Track 14 : BigAnti_19
- Track 15 : TinyDot_16

Summary of Final Annotations (See graph section above for start numbers):

The start number called the most often in the published annotations is 7, it was called in 6 of the 8 non-draft genes in the pham.

Genes that call this "Most Annotated" start:

- Annalisa_16, DobbysSock_15, Dorito_15, PhriskyACE_16, Thimann_16, WinkNick_16,

Genes that have the "Most Annotated" start but do not call it:

-

Genes that do not have the "Most Annotated" start:

- BigAnti_19, Carrillo_22, Guzman_22, Hugley_15, Hyzer_15, Jakelyne_23, Madavieve_15, Mariel_24, NCRodriguez_22, PhillyJawn_21, Phingu_23, Rizz_17, ScoobySnack_19, SushiChef_15, TinyDot_16, Tuti_17, Violeta_22, Winchester007_36,

Summary by start number:

Start 4:

- Found in 4 of 24 (16.7%) of genes in pham
- No Manual Annotations of this start.
- Called 100.0% of time when present
- Phage (with cluster) where this start called: Carrillo_22 (GA), Guzman_22 (GA), PhillyJawn_21 (GA), Violeta_22 (GA),

Start 5:

- Found in 1 of 24 (4.2%) of genes in pham
- Manual Annotations of this start: 1 of 8
- Called 100.0% of time when present
- Phage (with cluster) where this start called: TinyDot_16 (singleton),

Start 7:

- Found in 6 of 24 (25.0%) of genes in pham
- Manual Annotations of this start: 6 of 8
- Called 100.0% of time when present
- Phage (with cluster) where this start called: Annalisa_16 (CZ4), DobbysSock_15 (CZ4), Dorito_15 (CZ4), PhriskyACE_16 (CZ4), Thimann_16 (CZ4), WinkNick_16 (CZ4),

Start 8:

- Found in 22 of 24 (91.7%) of genes in pham
- Manual Annotations of this start: 1 of 8
- Called 54.5% of time when present
- Phage (with cluster) where this start called: Hugley_15 (CZ1), Hyzer_15 (CZ1), Jakelyne_23 (GA), Madavieve_15 (CZ1), Mariel_24 (GA), NCRodriguez_22 (GA), Phingu_23 (GA), Rizz_17 (CZ4), ScoobySnack_19 (GA), SushiChef_15 (CZ), Tuti_17 (CZ4), Winchester007_36 (GA),

Start 9:

- Found in 1 of 24 (4.2%) of genes in pham
- No Manual Annotations of this start.
- Called 100.0% of time when present
- Phage (with cluster) where this start called: BigAnti_19 (singleton),

Summary by clusters:

There are 5 clusters represented in this pham: CZ, singleton, CZ1, CZ4, GA,

Info for manual annotations of cluster CZ4:

- Start number 7 was manually annotated 6 times for cluster CZ4.
- Start number 8 was manually annotated 1 time for cluster CZ4.

Gene Information:

Gene: Annalisa_16 Start: 9500, Stop: 9763, Start Num: 7
Candidate Starts for Annalisa_16:
(Start: 7 @9500 has 6 MA's), (Start: 8 @9509 has 1 MA's), (20, 9623), (32, 9719), (36, 9749),

Gene: BigAnti_19 Start: 14001, Stop: 14258, Start Num: 9
Candidate Starts for BigAnti_19:
(9, 14001), (15, 14079), (21, 14121), (23, 14145), (24, 14148), (26, 14178), (28, 14187), (30, 14196),
(31, 14214), (34, 14226),

Gene: Carrillo_22 Start: 11159, Stop: 11449, Start Num: 4
Candidate Starts for Carrillo_22:
(3, 11009), (4, 11159), (Start: 8 @11189 has 1 MA's), (14, 11246), (25, 11345), (26, 11351), (27,
11357),

Gene: DobbysSock_15 Start: 8983, Stop: 9246, Start Num: 7
Candidate Starts for DobbysSock_15:
(Start: 7 @8983 has 6 MA's), (Start: 8 @8992 has 1 MA's), (20, 9106), (32, 9202), (36, 9232),

Gene: Dorito_15 Start: 8982, Stop: 9245, Start Num: 7
Candidate Starts for Dorito_15:
(Start: 7 @8982 has 6 MA's), (Start: 8 @8991 has 1 MA's), (20, 9105), (32, 9201), (36, 9231),

Gene: Guzman_22 Start: 11467, Stop: 11757, Start Num: 4
Candidate Starts for Guzman_22:
(3, 11317), (4, 11467), (Start: 8 @11497 has 1 MA's), (14, 11554), (25, 11653), (26, 11659), (27,
11665),

Gene: Hugley_15 Start: 9938, Stop: 10189, Start Num: 8
Candidate Starts for Hugley_15:
(Start: 8 @9938 has 1 MA's), (11, 9956), (16, 10022), (23, 10076), (29, 10124),

Gene: Hyzer_15 Start: 9938, Stop: 10183, Start Num: 8
Candidate Starts for Hyzer_15:
(Start: 8 @9938 has 1 MA's), (11, 9956), (16, 10022), (29, 10124),

Gene: Jakelyne_23 Start: 11235, Stop: 11495, Start Num: 8
Candidate Starts for Jakelyne_23:
(3, 11058), (Start: 8 @11235 has 1 MA's), (14, 11292), (17, 11310), (25, 11391), (26, 11397), (27,
11403),

Gene: Madavieve_15 Start: 9940, Stop: 10197, Start Num: 8
Candidate Starts for Madavieve_15:
(Start: 8 @9940 has 1 MA's), (11, 9958), (16, 10024), (33, 10153),

Gene: Mariel_24 Start: 11396, Stop: 11650, Start Num: 8
Candidate Starts for Mariel_24:
(6, 11384), (Start: 8 @11396 has 1 MA's), (10, 11408), (14, 11447), (25, 11546), (27, 11558),

Gene: NCRodriguez_22 Start: 11348, Stop: 11608, Start Num: 8
Candidate Starts for NCRodriguez_22:
(3, 11171), (Start: 8 @11348 has 1 MA's), (14, 11405), (17, 11423), (25, 11504), (26, 11510), (27,
11516),

Gene: PhillyJawn_21 Start: 11052, Stop: 11342, Start Num: 4

Candidate Starts for PhillyJawn_21:

(2, 10896), (3, 10902), (4, 11052), (Start: 8 @11082 has 1 MA's), (14, 11139), (25, 11238), (26, 11244), (27, 11250),

Gene: Phingu_23 Start: 11238, Stop: 11498, Start Num: 8

Candidate Starts for Phingu_23:

(3, 11061), (Start: 8 @11238 has 1 MA's), (14, 11295), (17, 11313), (25, 11394), (26, 11400), (27, 11406),

Gene: PhriskyACE_16 Start: 8982, Stop: 9245, Start Num: 7

Candidate Starts for PhriskyACE_16:

(Start: 7 @8982 has 6 MA's), (Start: 8 @8991 has 1 MA's), (20, 9105), (32, 9201), (36, 9231),

Gene: Rizz_17 Start: 9499, Stop: 9762, Start Num: 8

Candidate Starts for Rizz_17:

(Start: 8 @9499 has 1 MA's), (18, 9592), (33, 9715), (35, 9721),

Gene: ScoobySnack_19 Start: 10952, Stop: 11206, Start Num: 8

Candidate Starts for ScoobySnack_19:

(6, 10940), (Start: 8 @10952 has 1 MA's), (14, 11003), (25, 11102), (27, 11114),

Gene: SushiChef_15 Start: 9938, Stop: 10189, Start Num: 8

Candidate Starts for SushiChef_15:

(Start: 8 @9938 has 1 MA's), (11, 9956), (16, 10022), (23, 10076), (29, 10124),

Gene: Thimann_16 Start: 9470, Stop: 9733, Start Num: 7

Candidate Starts for Thimann_16:

(Start: 7 @9470 has 6 MA's), (Start: 8 @9479 has 1 MA's), (20, 9593), (22, 9608), (32, 9689), (36, 9719),

Gene: TinyDot_16 Start: 9865, Stop: 10149, Start Num: 5

Candidate Starts for TinyDot_16:

(1, 9526), (Start: 5 @9865 has 1 MA's), (12, 9907), (19, 9976), (26, 10048),

Gene: Tuti_17 Start: 9502, Stop: 9765, Start Num: 8

Candidate Starts for Tuti_17:

(Start: 8 @9502 has 1 MA's), (18, 9595), (33, 9718), (35, 9724),

Gene: Violeta_22 Start: 11150, Stop: 11440, Start Num: 4

Candidate Starts for Violeta_22:

(3, 11000), (4, 11150), (Start: 8 @11180 has 1 MA's), (14, 11237), (25, 11336), (26, 11342), (27, 11348),

Gene: Winchester007_36 Start: 17200, Stop: 17460, Start Num: 8

Candidate Starts for Winchester007_36:

(3, 17020), (Start: 8 @17200 has 1 MA's), (10, 17212), (13, 17230), (14, 17257), (25, 17356), (26, 17362), (27, 17368),

Gene: WinkNick_16 Start: 9485, Stop: 9748, Start Num: 7

Candidate Starts for WinkNick_16:

(Start: 7 @9485 has 6 MA's), (Start: 8 @9494 has 1 MA's), (20, 9608), (32, 9704), (36, 9734),