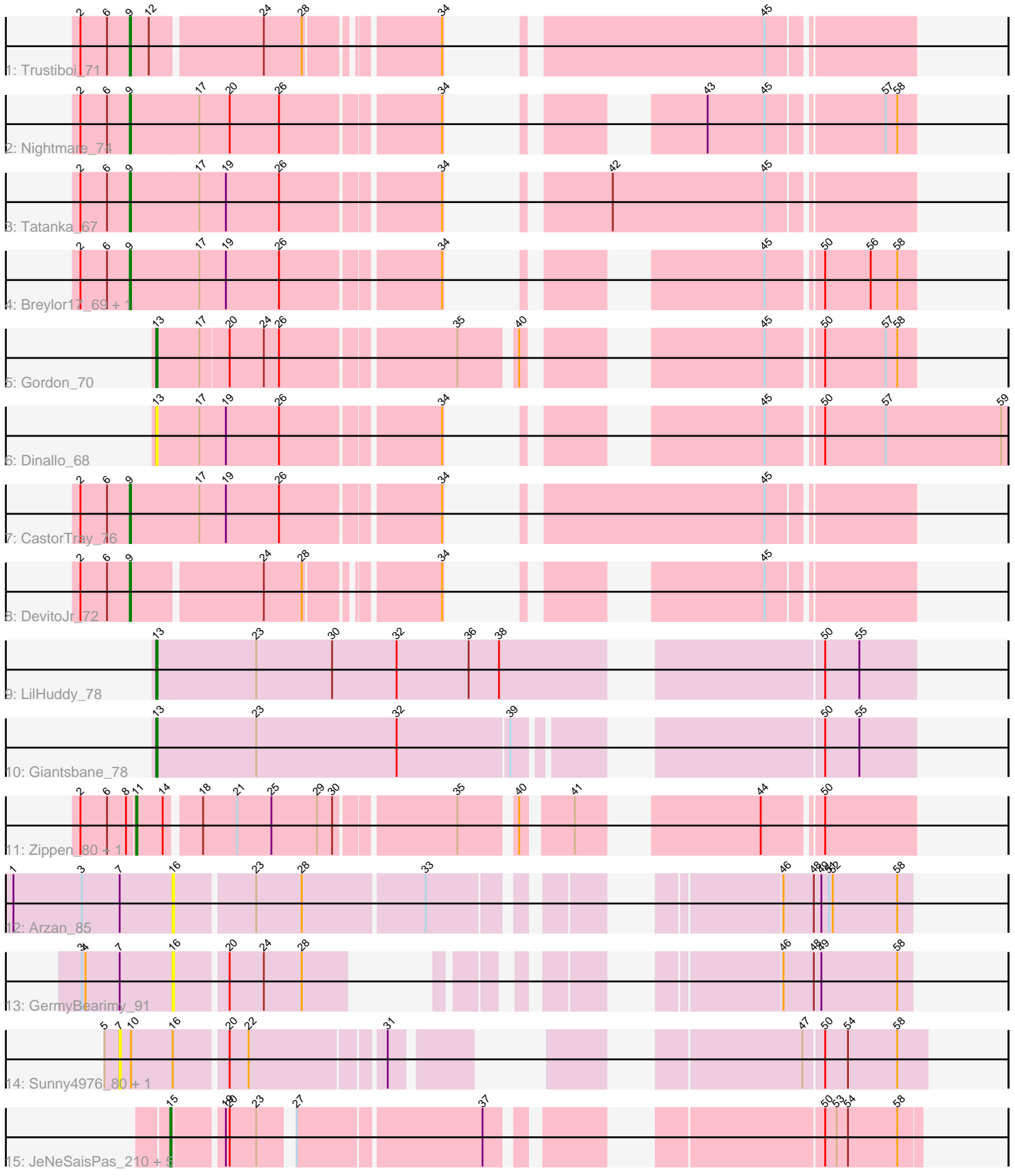


Pham 301732



Note: Tracks are now grouped by subcluster and scaled. Switching in subcluster is indicated by changes in track color. Track scale is now set by default to display the region 30 bp upstream of start 1 to 30 bp downstream of the last possible start. If this default region is judged to be packed too tightly with annotated starts, the track will be further scaled to only show that region of the ORF with annotated starts. This action will be indicated by adding "Zoomed" to the title. For starts, yellow indicates the location of called starts comprised solely of Glimmer/GeneMark auto-annotations, green indicates the location of called starts with at least 1 manual gene annotation.

Pham 301732 Report

This analysis was run 06/08/26 on database version 649.

Pham number 301732 has 23 members, 8 are drafts.

Phages represented in each track:

- Track 1 : Trustiboi_71
- Track 2 : Nightmare_74
- Track 3 : Tatanka_67
- Track 4 : Breylor17_69, Synepsis_68
- Track 5 : Gordon_70
- Track 6 : Dinallo_68
- Track 7 : CastorTray_76
- Track 8 : DevitoJr_72
- Track 9 : LilHuddy_78
- Track 10 : Giantsbane_78
- Track 11 : Zippen_80, Inked_80
- Track 12 : Arzan_85
- Track 13 : GermyBearimy_91
- Track 14 : Sunny4976_80, Jazzy4900_81
- Track 15 : JeNeSaisPas_210, Gandionco_214, Elver_215, Qui_216, Paella_216, Marianna39_214

Summary of Final Annotations (See graph section above for start numbers):

The start number called the most often in the published annotations is 9, it was called in 7 of the 15 non-draft genes in the pham.

Genes that call this "Most Annotated" start:

- Breylor17_69, CastorTray_76, DevitoJr_72, Nightmare_74, Synepsis_68, Tatanka_67, Trustiboi_71,

Genes that have the "Most Annotated" start but do not call it:

-

Genes that do not have the "Most Annotated" start:

- Arzan_85, Dinallo_68, Elver_215, Gandionco_214, GermyBearimy_91, Giantsbane_78, Gordon_70, Inked_80, Jazzy4900_81, JeNeSaisPas_210, LilHuddy_78, Marianna39_214, Paella_216, Qui_216, Sunny4976_80, Zippen_80,

Summary by start number:

Start 7:

- Found in 4 of 23 (17.4%) of genes in pham
- No Manual Annotations of this start.
- Called 50.0% of time when present
- Phage (with cluster) where this start called: Jazzy4900_81 (FI), Sunny4976_80 (FI),

Start 9:

- Found in 7 of 23 (30.4%) of genes in pham
- Manual Annotations of this start: 7 of 15
- Called 100.0% of time when present
- Phage (with cluster) where this start called: Breylor17_69 (AU1), CastorTray_76 (AU1), DevitoJr_72 (AU1), Nightmare_74 (AU1), Synepsis_68 (AU1), Tatanka_67 (AU1), Trustiboi_71 (AU1),

Start 11:

- Found in 2 of 23 (8.7%) of genes in pham
- Manual Annotations of this start: 2 of 15
- Called 100.0% of time when present
- Phage (with cluster) where this start called: Inked_80 (AU7), Zippen_80 (AU7),

Start 13:

- Found in 4 of 23 (17.4%) of genes in pham
- Manual Annotations of this start: 3 of 15
- Called 100.0% of time when present
- Phage (with cluster) where this start called: Dinallo_68 (AU1), Giantsbane_78 (AU2), Gordon_70 (AU1), LilHuddy_78 (AU2),

Start 15:

- Found in 6 of 23 (26.1%) of genes in pham
- Manual Annotations of this start: 3 of 15
- Called 100.0% of time when present
- Phage (with cluster) where this start called: Elver_215 (FK), Gandionco_214 (FK), JeNeSaisPas_210 (FK), Marianna39_214 (FK), Paella_216 (FK), Qui_216 (FK),

Start 16:

- Found in 4 of 23 (17.4%) of genes in pham
- No Manual Annotations of this start.
- Called 50.0% of time when present
- Phage (with cluster) where this start called: Arzan_85 (FI), GermyBearimy_91 (FI),

Summary by clusters:

There are 5 clusters represented in this pham: AU1, FI, AU2, AU7, FK,

Info for manual annotations of cluster AU1:

- Start number 9 was manually annotated 7 times for cluster AU1.
- Start number 13 was manually annotated 1 time for cluster AU1.

Info for manual annotations of cluster AU2:

- Start number 13 was manually annotated 2 times for cluster AU2.

Info for manual annotations of cluster AU7:

- Start number 11 was manually annotated 2 times for cluster AU7.

Info for manual annotations of cluster FK:

- Start number 15 was manually annotated 3 times for cluster FK.

Gene Information:

Gene: Arzan_85 Start: 51094, Stop: 51591, Start Num: 16

Candidate Starts for Arzan_85:

(1, 50968), (3, 51022), (7, 51052), (16, 51094), (23, 51154), (28, 51190), (33, 51283), (46, 51490), (48, 51514), (49, 51520), (51, 51526), (52, 51529), (58, 51580),

Gene: Breylor17_69 Start: 49530, Stop: 50018, Start Num: 9

Candidate Starts for Breylor17_69:

(2, 49491), (6, 49512), (Start: 9 @49530 has 7 MA's), (17, 49584), (19, 49605), (26, 49647), (34, 49764), (45, 49908), (50, 49947), (56, 49983), (58, 50004),

Gene: CastorTray_76 Start: 49722, Stop: 50243, Start Num: 9

Candidate Starts for CastorTray_76:

(2, 49683), (6, 49704), (Start: 9 @49722 has 7 MA's), (17, 49776), (19, 49797), (26, 49839), (34, 49956), (45, 50136),

Gene: DevitoJr_72 Start: 49103, Stop: 49573, Start Num: 9

Candidate Starts for DevitoJr_72:

(2, 49064), (6, 49085), (Start: 9 @49103 has 7 MA's), (24, 49202), (28, 49232), (34, 49322), (45, 49466),

Gene: Dinallo_68 Start: 49986, Stop: 50525, Start Num: 13

Candidate Starts for Dinallo_68:

(Start: 13 @49986 has 3 MA's), (17, 50019), (19, 50040), (26, 50082), (34, 50199), (45, 50343), (50, 50382), (57, 50430), (59, 50520),

Gene: Elver_215 Start: 98933, Stop: 99430, Start Num: 15

Candidate Starts for Elver_215:

(Start: 15 @98933 has 3 MA's), (19, 98969), (20, 98972), (23, 98993), (27, 99014), (37, 99152), (50, 99356), (53, 99365), (54, 99374), (58, 99413),

Gene: Gandionco_214 Start: 98504, Stop: 99001, Start Num: 15

Candidate Starts for Gandionco_214:

(Start: 15 @98504 has 3 MA's), (19, 98540), (20, 98543), (23, 98564), (27, 98585), (37, 98723), (50, 98927), (53, 98936), (54, 98945), (58, 98984),

Gene: GermyBearimy_91 Start: 52065, Stop: 52487, Start Num: 16

Candidate Starts for GermyBearimy_91:

(3, 51993), (4, 51996), (7, 52023), (16, 52065), (20, 52104), (24, 52131), (28, 52161), (46, 52386), (48, 52410), (49, 52416), (58, 52476),

Gene: Giantsbane_78 Start: 48278, Stop: 48820, Start Num: 13

Candidate Starts for Giantsbane_78:

(Start: 13 @48278 has 3 MA's), (23, 48356), (32, 48467), (39, 48554), (50, 48749), (55, 48776),

Gene: Gordon_70 Start: 49594, Stop: 50109, Start Num: 13

Candidate Starts for Gordon_70:

(Start: 13 @49594 has 3 MA's), (17, 49627), (20, 49648), (24, 49675), (26, 49687), (35, 49816), (40, 49855), (45, 49999), (50, 50038), (57, 50086), (58, 50095),

Gene: Inked_80 Start: 50253, Stop: 50783, Start Num: 11

Candidate Starts for Inked_80:

(2, 50211), (6, 50232), (8, 50247), (Start: 11 @50253 has 2 MA's), (14, 50274), (18, 50298), (21, 50325), (25, 50352), (29, 50388), (30, 50400), (35, 50487), (40, 50526), (41, 50559), (44, 50670), (50, 50712),

Gene: Jazzy4900_81 Start: 51336, Stop: 51845, Start Num: 7

Candidate Starts for Jazzy4900_81:

(5, 51324), (7, 51336), (10, 51345), (16, 51378), (20, 51417), (22, 51432), (31, 51531), (47, 51750), (50, 51765), (54, 51783), (58, 51822),

Gene: JeNeSaisPas_210 Start: 99054, Stop: 99551, Start Num: 15

Candidate Starts for JeNeSaisPas_210:

(Start: 15 @99054 has 3 MA's), (19, 99090), (20, 99093), (23, 99114), (27, 99135), (37, 99273), (50, 99477), (53, 99486), (54, 99495), (58, 99534),

Gene: LilHuddy_78 Start: 49428, Stop: 49985, Start Num: 13

Candidate Starts for LilHuddy_78:

(Start: 13 @49428 has 3 MA's), (23, 49506), (30, 49566), (32, 49617), (36, 49674), (38, 49698), (50, 49914), (55, 49941),

Gene: Marianna39_214 Start: 99107, Stop: 99604, Start Num: 15

Candidate Starts for Marianna39_214:

(Start: 15 @99107 has 3 MA's), (19, 99143), (20, 99146), (23, 99167), (27, 99188), (37, 99326), (50, 99530), (53, 99539), (54, 99548), (58, 99587),

Gene: Nightmare_74 Start: 50029, Stop: 50514, Start Num: 9

Candidate Starts for Nightmare_74:

(2, 49990), (6, 50011), (Start: 9 @50029 has 7 MA's), (17, 50083), (20, 50107), (26, 50146), (34, 50263), (43, 50362), (45, 50407), (57, 50491), (58, 50500),

Gene: Paella_216 Start: 99818, Stop: 100315, Start Num: 15

Candidate Starts for Paella_216:

(Start: 15 @99818 has 3 MA's), (19, 99854), (20, 99857), (23, 99878), (27, 99899), (37, 100037), (50, 100241), (53, 100250), (54, 100259), (58, 100298),

Gene: Qui_216 Start: 99806, Stop: 100303, Start Num: 15

Candidate Starts for Qui_216:

(Start: 15 @99806 has 3 MA's), (19, 99842), (20, 99845), (23, 99866), (27, 99887), (37, 100025), (50, 100229), (53, 100238), (54, 100247), (58, 100286),

Gene: Sunny4976_80 Start: 51336, Stop: 51845, Start Num: 7

Candidate Starts for Sunny4976_80:

(5, 51324), (7, 51336), (10, 51345), (16, 51378), (20, 51417), (22, 51432), (31, 51531), (47, 51750), (50, 51765), (54, 51783), (58, 51822),

Gene: Synepsis_68 Start: 49067, Stop: 49555, Start Num: 9

Candidate Starts for Synepsis_68:

(2, 49028), (6, 49049), (Start: 9 @49067 has 7 MA's), (17, 49121), (19, 49142), (26, 49184), (34, 49301), (45, 49445), (50, 49484), (56, 49520), (58, 49541),

Gene: Tatanka_67 Start: 49212, Stop: 49733, Start Num: 9

Candidate Starts for Tatanka_67:

(2, 49173), (6, 49194), (Start: 9 @49212 has 7 MA's), (17, 49266), (19, 49287), (26, 49329), (34, 49446), (42, 49506), (45, 49626),

Gene: Trustiboi_71 Start: 49330, Stop: 49836, Start Num: 9

Candidate Starts for Trustiboi_71:

(2, 49291), (6, 49312), (Start: 9 @49330 has 7 MA's), (12, 49345), (24, 49429), (28, 49459), (34, 49549), (45, 49729),

Gene: Zippen_80 Start: 50127, Stop: 50657, Start Num: 11

Candidate Starts for Zippen_80:

(2, 50085), (6, 50106), (8, 50121), (Start: 11 @50127 has 2 MA's), (14, 50148), (18, 50172), (21, 50199), (25, 50226), (29, 50262), (30, 50274), (35, 50361), (40, 50400), (41, 50433), (44, 50544), (50, 50586),