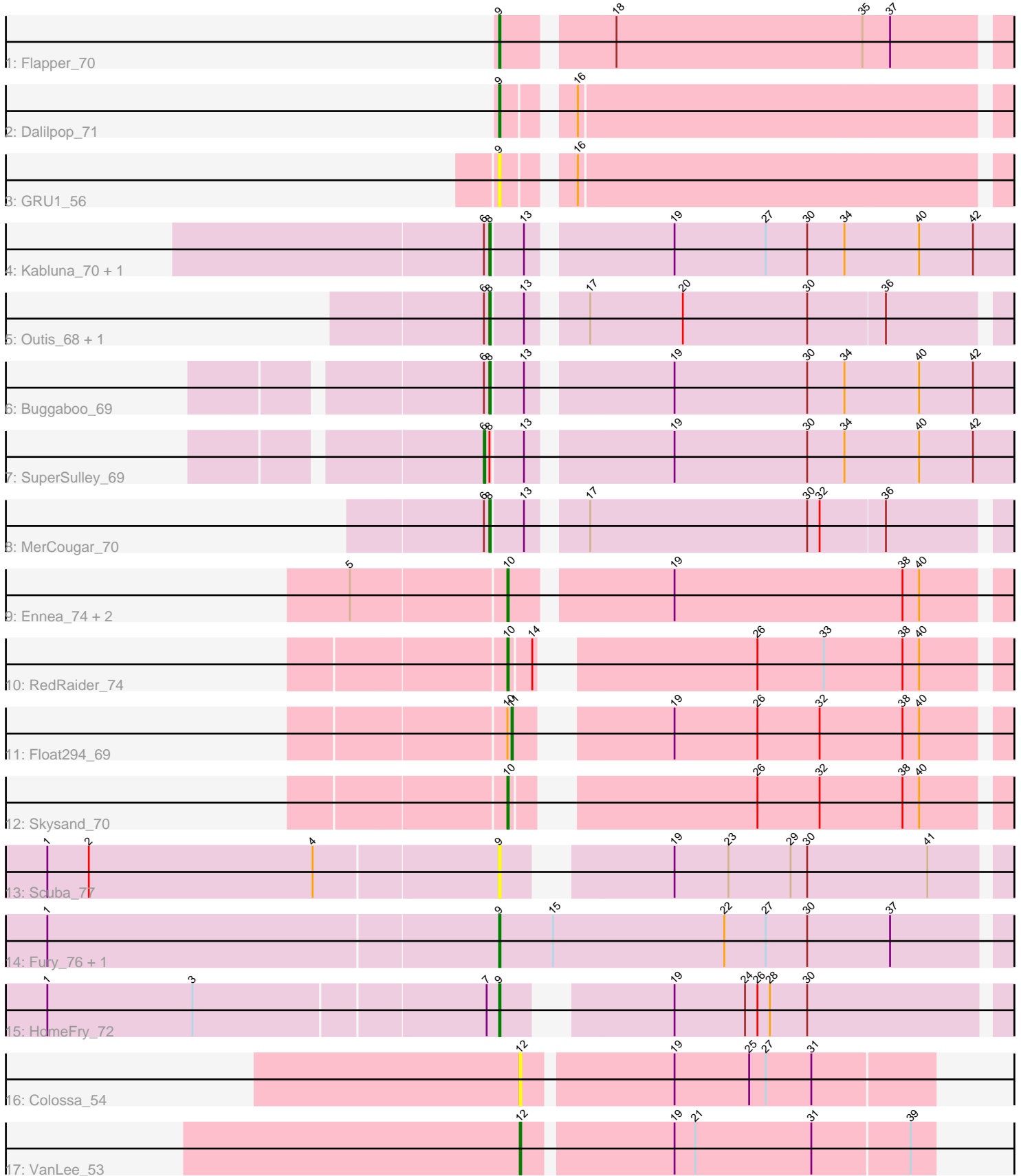


Pham 301742



Note: Tracks are now grouped by subcluster and scaled. Switching in subcluster is indicated by changes in track color. Track scale is now set by default to display the region 30 bp upstream of start 1 to 30 bp downstream of the last possible start. If this default region is judged to be packed too tightly with annotated starts, the track will be further scaled to only show that region of the ORF with annotated starts. This action will be indicated by adding "Zoomed" to the title. For starts, yellow indicates the location of called starts comprised solely of Glimmer/GeneMark auto-annotations, green indicates the location of called starts with at least 1 manual gene annotation.

Pham 301742 Report

This analysis was run 06/08/26 on database version 649.

Pham number 301742 has 22 members, 3 are drafts.

Phages represented in each track:

- Track 1 : Flapper_70
- Track 2 : Dalilpop_71
- Track 3 : GRU1_56
- Track 4 : Kabluna_70, Bonum_71
- Track 5 : Outis_68, StarStruck_68
- Track 6 : Buggaboo_69
- Track 7 : SuperSulley_69
- Track 8 : MerCougar_70
- Track 9 : Ennea_74, Patio_69, Lollipop1437_71
- Track 10 : RedRaider_74
- Track 11 : Float294_69
- Track 12 : Skysand_70
- Track 13 : Scuba_77
- Track 14 : Fury_76, Pleakley_76
- Track 15 : HomeFry_72
- Track 16 : Colossa_54
- Track 17 : VanLee_53

Summary of Final Annotations (See graph section above for start numbers):

The start number called the most often in the published annotations is 8, it was called in 6 of the 19 non-draft genes in the pham.

Genes that call this "Most Annotated" start:

- Bonum_71, Buggaboo_69, Kabluna_70, MerCougar_70, Outis_68, StarStruck_68,

Genes that have the "Most Annotated" start but do not call it:

- SuperSulley_69,

Genes that do not have the "Most Annotated" start:

- Colossa_54, Dalilpop_71, Ennea_74, Flapper_70, Float294_69, Fury_76, GRU1_56, HomeFry_72, Lollipop1437_71, Patio_69, Pleakley_76, RedRaider_74, Scuba_77, Skysand_70, VanLee_53,

Summary by start number:

Start 6:

- Found in 7 of 22 (31.8%) of genes in pham
- Manual Annotations of this start: 1 of 19
- Called 14.3% of time when present
- Phage (with cluster) where this start called: SuperSulley_69 (CR2),

Start 8:

- Found in 7 of 22 (31.8%) of genes in pham
- Manual Annotations of this start: 6 of 19
- Called 85.7% of time when present
- Phage (with cluster) where this start called: Bonum_71 (CR2), Buggaboo_69 (CR2), Kabluna_70 (CR2), MerCougar_70 (CR2), Outis_68 (CR2), StarStruck_68 (CR2),

Start 9:

- Found in 7 of 22 (31.8%) of genes in pham
- Manual Annotations of this start: 5 of 19
- Called 100.0% of time when present
- Phage (with cluster) where this start called: Dalilpop_71 (CR1), Flapper_70 (CR1), Fury_76 (CR5), GRU1_56 (CR1), HomeFry_72 (CR5), Pleakley_76 (CR5), Scuba_77 (CR5),

Start 10:

- Found in 6 of 22 (27.3%) of genes in pham
- Manual Annotations of this start: 5 of 19
- Called 83.3% of time when present
- Phage (with cluster) where this start called: Ennea_74 (CR3), Lollipop1437_71 (CR3), Patio_69 (CR3), RedRaider_74 (CR3), Skysand_70 (CR3),

Start 11:

- Found in 1 of 22 (4.5%) of genes in pham
- Manual Annotations of this start: 1 of 19
- Called 100.0% of time when present
- Phage (with cluster) where this start called: Float294_69 (CR3),

Start 12:

- Found in 2 of 22 (9.1%) of genes in pham
- Manual Annotations of this start: 1 of 19
- Called 100.0% of time when present
- Phage (with cluster) where this start called: Colossa_54 (KA), VanLee_53 (KA),

Summary by clusters:

There are 5 clusters represented in this pham: CR2, CR3, KA, CR1, CR5,

Info for manual annotations of cluster CR1:

- Start number 9 was manually annotated 2 times for cluster CR1.

Info for manual annotations of cluster CR2:

- Start number 6 was manually annotated 1 time for cluster CR2.
- Start number 8 was manually annotated 6 times for cluster CR2.

Info for manual annotations of cluster CR3:

- Start number 10 was manually annotated 5 times for cluster CR3.
- Start number 11 was manually annotated 1 time for cluster CR3.

Info for manual annotations of cluster CR5:

- Start number 9 was manually annotated 3 times for cluster CR5.

Info for manual annotations of cluster KA:

- Start number 12 was manually annotated 1 time for cluster KA.

Gene Information:

Gene: Bonum_71 Start: 53306, Stop: 52938, Start Num: 8

Candidate Starts for Bonum_71:

(Start: 6 @53309 has 1 MA's), (Start: 8 @53306 has 6 MA's), (13, 53285), (19, 53192), (27, 53126), (30, 53096), (34, 53069), (40, 53015), (42, 52976),

Gene: Buggaboo_69 Start: 53857, Stop: 53489, Start Num: 8

Candidate Starts for Buggaboo_69:

(Start: 6 @53860 has 1 MA's), (Start: 8 @53857 has 6 MA's), (13, 53836), (19, 53743), (30, 53647), (34, 53620), (40, 53566), (42, 53527),

Gene: Colossa_54 Start: 37393, Stop: 37680, Start Num: 12

Candidate Starts for Colossa_54:

(Start: 12 @37393 has 1 MA's), (19, 37495), (25, 37549), (27, 37561), (31, 37594),

Gene: Dalilpop_71 Start: 54508, Stop: 54164, Start Num: 9

Candidate Starts for Dalilpop_71:

(Start: 9 @54508 has 5 MA's), (16, 54469),

Gene: Ennea_74 Start: 54607, Stop: 54260, Start Num: 10

Candidate Starts for Ennea_74:

(5, 54715), (Start: 10 @54607 has 5 MA's), (19, 54502), (38, 54337), (40, 54325),

Gene: Flapper_70 Start: 53705, Stop: 53355, Start Num: 9

Candidate Starts for Flapper_70:

(Start: 9 @53705 has 5 MA's), (18, 53636), (35, 53459), (37, 53441),

Gene: Float294_69 Start: 54498, Stop: 54169, Start Num: 11

Candidate Starts for Float294_69:

(Start: 10 @54501 has 5 MA's), (Start: 11 @54498 has 1 MA's), (19, 54411), (26, 54351), (32, 54306), (38, 54246), (40, 54234),

Gene: Fury_76 Start: 52857, Stop: 52495, Start Num: 9

Candidate Starts for Fury_76:

(1, 53178), (Start: 9 @52857 has 5 MA's), (15, 52818), (22, 52695), (27, 52665), (30, 52635), (37, 52575),

Gene: GRU1_56 Start: 45547, Stop: 45203, Start Num: 9

Candidate Starts for GRU1_56:

(Start: 9 @45547 has 5 MA's), (16, 45508),

Gene: HomeFry_72 Start: 51531, Stop: 51199, Start Num: 9

Candidate Starts for HomeFry_72:

(1, 51849), (3, 51744), (7, 51540), (Start: 9 @51531 has 5 MA's), (19, 51435), (24, 51384), (26, 51375), (28, 51366), (30, 51339),

Gene: Kabluna_70 Start: 52635, Stop: 52267, Start Num: 8

Candidate Starts for Kabluna_70:

(Start: 6 @52638 has 1 MA's), (Start: 8 @52635 has 6 MA's), (13, 52614), (19, 52521), (27, 52455), (30, 52425), (34, 52398), (40, 52344), (42, 52305),

Gene: Lollipop1437_71 Start: 54287, Stop: 53940, Start Num: 10

Candidate Starts for Lollipop1437_71:

(5, 54395), (Start: 10 @54287 has 5 MA's), (19, 54182), (38, 54017), (40, 54005),

Gene: MerCougar_70 Start: 54345, Stop: 53992, Start Num: 8

Candidate Starts for MerCougar_70:

(Start: 6 @54348 has 1 MA's), (Start: 8 @54345 has 6 MA's), (13, 54324), (17, 54291), (30, 54135), (32, 54126), (36, 54081),

Gene: Outis_68 Start: 53482, Stop: 53129, Start Num: 8

Candidate Starts for Outis_68:

(Start: 6 @53485 has 1 MA's), (Start: 8 @53482 has 6 MA's), (13, 53461), (17, 53428), (20, 53362), (30, 53272), (36, 53218),

Gene: Patio_69 Start: 53344, Stop: 52997, Start Num: 10

Candidate Starts for Patio_69:

(5, 53452), (Start: 10 @53344 has 5 MA's), (19, 53239), (38, 53074), (40, 53062),

Gene: Pleakley_76 Start: 52858, Stop: 52496, Start Num: 9

Candidate Starts for Pleakley_76:

(1, 53179), (Start: 9 @52858 has 5 MA's), (15, 52819), (22, 52696), (27, 52666), (30, 52636), (37, 52576),

Gene: RedRaider_74 Start: 55645, Stop: 55316, Start Num: 10

Candidate Starts for RedRaider_74:

(Start: 10 @55645 has 5 MA's), (14, 55630), (26, 55498), (33, 55450), (38, 55393), (40, 55381),

Gene: Scuba_77 Start: 52913, Stop: 52581, Start Num: 9

Candidate Starts for Scuba_77:

(1, 53234), (2, 53204), (4, 53042), (Start: 9 @52913 has 5 MA's), (19, 52817), (23, 52778), (29, 52733), (30, 52721), (41, 52634),

Gene: Skysand_70 Start: 53998, Stop: 53669, Start Num: 10

Candidate Starts for Skysand_70:

(Start: 10 @53998 has 5 MA's), (26, 53851), (32, 53806), (38, 53746), (40, 53734),

Gene: StarStruck_68 Start: 53482, Stop: 53129, Start Num: 8

Candidate Starts for StarStruck_68:

(Start: 6 @53485 has 1 MA's), (Start: 8 @53482 has 6 MA's), (13, 53461), (17, 53428), (20, 53362), (30, 53272), (36, 53218),

Gene: SuperSulley_69 Start: 53860, Stop: 53489, Start Num: 6

Candidate Starts for SuperSulley_69:

(Start: 6 @53860 has 1 MA's), (Start: 8 @53857 has 6 MA's), (13, 53836), (19, 53743), (30, 53647), (34, 53620), (40, 53566), (42, 53527),

Gene: VanLee_53 Start: 37575, Stop: 37862, Start Num: 12

Candidate Starts for VanLee_53:

(Start: 12 @37575 has 1 MA's), (19, 37677), (21, 37692), (31, 37776), (39, 37845),