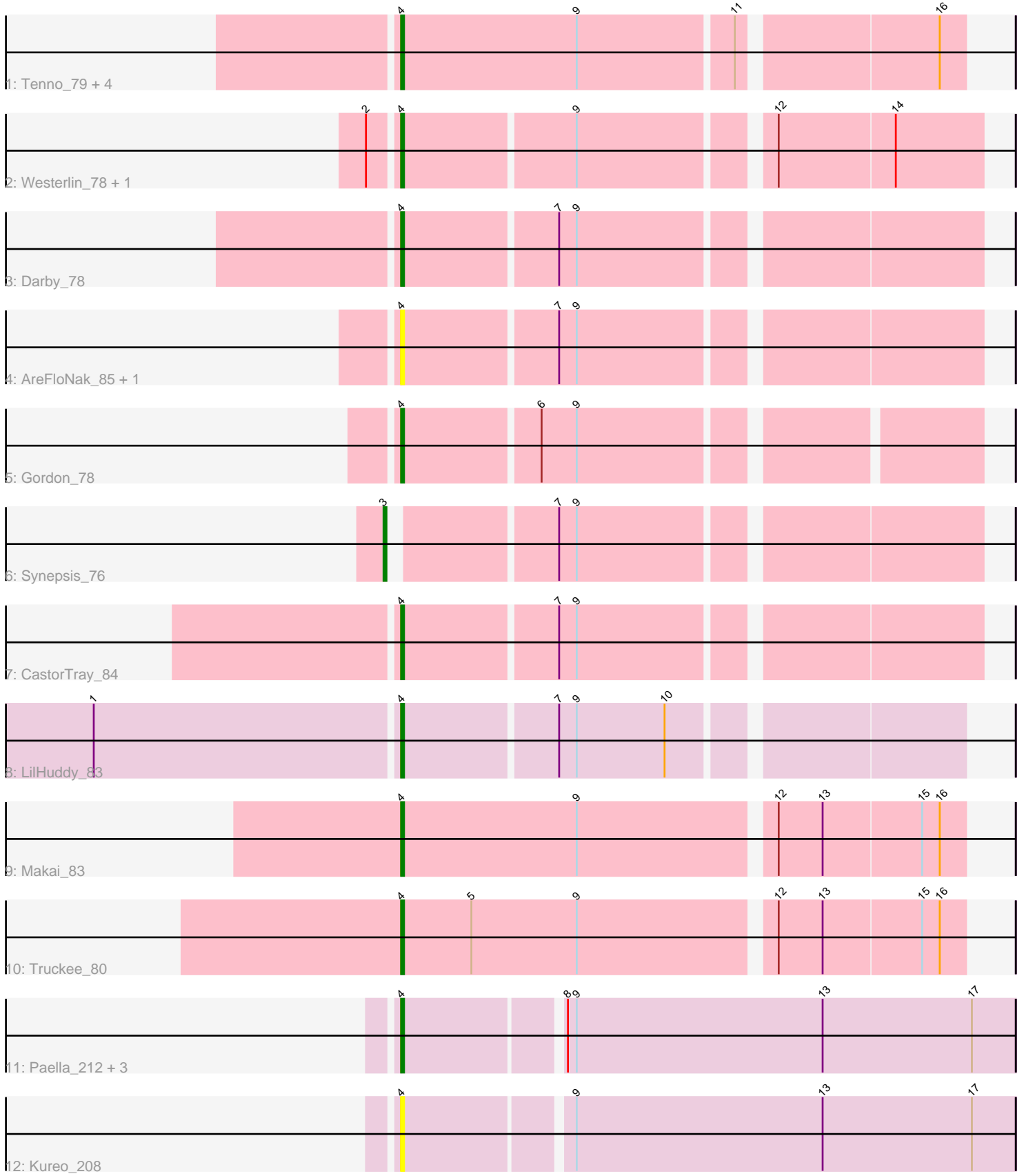


Pham 301765



Note: Tracks are now grouped by subcluster and scaled. Switching in subcluster is indicated by changes in track color. Track scale is now set by default to display the region 30 bp upstream of start 1 to 30 bp downstream of the last possible start. If this default region is judged to be packed too tightly with annotated starts, the track will be further scaled to only show that region of the ORF with annotated starts. This action will be indicated by adding "Zoomed" to the title. For starts, yellow indicates the location of called starts comprised solely of Glimmer/GeneMark auto-annotations, green indicates the location of called starts with at least 1 manual gene annotation.

## Pham 301765 Report

This analysis was run 06/08/26 on database version 649.

Pham number 301765 has 21 members, 6 are drafts.

Phages represented in each track:

- Track 1 : Tenno\_79, Dinallo\_74, Issa\_74, CapnMurica\_76, MiniBagel\_80
- Track 2 : Westerlin\_78, LucySwiss\_81
- Track 3 : Darby\_78
- Track 4 : AreFloNak\_85, Nivinsha\_82
- Track 5 : Gordon\_78
- Track 6 : Synepsis\_76
- Track 7 : CastorTray\_84
- Track 8 : LilHuddy\_83
- Track 9 : Makai\_83
- Track 10 : Truckee\_80
- Track 11 : Paella\_212, Elver\_211, JeNeSaisPas\_206, Qui\_212
- Track 12 : Kureo\_208

### ***Summary of Final Annotations (See graph section above for start numbers):***

The start number called the most often in the published annotations is 4, it was called in 14 of the 15 non-draft genes in the pham.

Genes that call this "Most Annotated" start:

- AreFloNak\_85, CapnMurica\_76, CastorTray\_84, Darby\_78, Dinallo\_74, Elver\_211, Gordon\_78, Issa\_74, JeNeSaisPas\_206, Kureo\_208, LilHuddy\_83, LucySwiss\_81, Makai\_83, MiniBagel\_80, Nivinsha\_82, Paella\_212, Qui\_212, Tenno\_79, Truckee\_80, Westerlin\_78,

Genes that have the "Most Annotated" start but do not call it:

- 

Genes that do not have the "Most Annotated" start:

- Synepsis\_76,

### **Summary by start number:**

Start 3:

- Found in 1 of 21 ( 4.8% ) of genes in pham

- Manual Annotations of this start: 1 of 15
- Called 100.0% of time when present
- Phage (with cluster) where this start called: Synopsis\_76 (AU1),

Start 4:

- Found in 20 of 21 ( 95.2% ) of genes in pham
- Manual Annotations of this start: 14 of 15
- Called 100.0% of time when present
- Phage (with cluster) where this start called: AreFloNak\_85 (AU1), CapnMurica\_76 (AU1), CastorTray\_84 (AU1), Darby\_78 (AU1), Dinallo\_74 (AU1), Elver\_211 (FK), Gordon\_78 (AU1), Issa\_74 (AU1), JeNeSaisPas\_206 (FK), Kureo\_208 (FK), LilHuddy\_83 (AU2), LucySwiss\_81 (AU1), Makai\_83 (AU5), MiniBagel\_80 (AU1), Nivinsha\_82 (AU1), Paella\_212 (FK), Qui\_212 (FK), Tenno\_79 (AU1), Truckee\_80 (AU5), Westerlin\_78 (AU1),

### **Summary by clusters:**

There are 4 clusters represented in this pham: AU1, AU2, FK, AU5,

Info for manual annotations of cluster AU1:

- Start number 3 was manually annotated 1 time for cluster AU1.
- Start number 4 was manually annotated 8 times for cluster AU1.

Info for manual annotations of cluster AU2:

- Start number 4 was manually annotated 1 time for cluster AU2.

Info for manual annotations of cluster AU5:

- Start number 4 was manually annotated 2 times for cluster AU5.

Info for manual annotations of cluster FK:

- Start number 4 was manually annotated 3 times for cluster FK.

### **Gene Information:**

Gene: AreFloNak\_85 Start: 51430, Stop: 51615, Start Num: 4

Candidate Starts for AreFloNak\_85:

(Start: 4 @51430 has 14 MA's), (7, 51481), (9, 51487),

Gene: CapnMurica\_76 Start: 51657, Stop: 51839, Start Num: 4

Candidate Starts for CapnMurica\_76:

(Start: 4 @51657 has 14 MA's), (9, 51717), (11, 51768), (16, 51831),

Gene: CastorTray\_84 Start: 52198, Stop: 52383, Start Num: 4

Candidate Starts for CastorTray\_84:

(Start: 4 @52198 has 14 MA's), (7, 52249), (9, 52255),

Gene: Darby\_78 Start: 51244, Stop: 51429, Start Num: 4

Candidate Starts for Darby\_78:

(Start: 4 @51244 has 14 MA's), (7, 51295), (9, 51301),

Gene: Dinallo\_74 Start: 51903, Stop: 52085, Start Num: 4

Candidate Starts for Dinallo\_74:

(Start: 4 @51903 has 14 MA's), (9, 51963), (11, 52014), (16, 52077),

Gene: Elver\_211 Start: 97960, Stop: 98163, Start Num: 4

Candidate Starts for Elver\_211:

(Start: 4 @97960 has 14 MA's), (8, 98011), (9, 98014), (13, 98098), (17, 98149),

Gene: Gordon\_78 Start: 51987, Stop: 52169, Start Num: 4

Candidate Starts for Gordon\_78:

(Start: 4 @51987 has 14 MA's), (6, 52032), (9, 52044),

Gene: Issa\_74 Start: 50728, Stop: 50910, Start Num: 4

Candidate Starts for Issa\_74:

(Start: 4 @50728 has 14 MA's), (9, 50788), (11, 50839), (16, 50902),

Gene: JeNeSaisPas\_206 Start: 98081, Stop: 98284, Start Num: 4

Candidate Starts for JeNeSaisPas\_206:

(Start: 4 @98081 has 14 MA's), (8, 98132), (9, 98135), (13, 98219), (17, 98270),

Gene: Kureo\_208 Start: 96625, Stop: 96828, Start Num: 4

Candidate Starts for Kureo\_208:

(Start: 4 @96625 has 14 MA's), (9, 96679), (13, 96763), (17, 96814),

Gene: LilHuddy\_83 Start: 51535, Stop: 51714, Start Num: 4

Candidate Starts for LilHuddy\_83:

(1, 51433), (Start: 4 @51535 has 14 MA's), (7, 51586), (9, 51592), (10, 51622),

Gene: LucySwiss\_81 Start: 51150, Stop: 51335, Start Num: 4

Candidate Starts for LucySwiss\_81:

(2, 51141), (Start: 4 @51150 has 14 MA's), (9, 51207), (12, 51267), (14, 51306),

Gene: Makai\_83 Start: 52100, Stop: 52285, Start Num: 4

Candidate Starts for Makai\_83:

(Start: 4 @52100 has 14 MA's), (9, 52160), (12, 52223), (13, 52238), (15, 52271), (16, 52277),

Gene: MiniBagel\_80 Start: 51661, Stop: 51843, Start Num: 4

Candidate Starts for MiniBagel\_80:

(Start: 4 @51661 has 14 MA's), (9, 51721), (11, 51772), (16, 51835),

Gene: Nivinsha\_82 Start: 51431, Stop: 51616, Start Num: 4

Candidate Starts for Nivinsha\_82:

(Start: 4 @51431 has 14 MA's), (7, 51482), (9, 51488),

Gene: Paella\_212 Start: 98845, Stop: 99048, Start Num: 4

Candidate Starts for Paella\_212:

(Start: 4 @98845 has 14 MA's), (8, 98896), (9, 98899), (13, 98983), (17, 99034),

Gene: Qui\_212 Start: 98833, Stop: 99036, Start Num: 4

Candidate Starts for Qui\_212:

(Start: 4 @98833 has 14 MA's), (8, 98884), (9, 98887), (13, 98971), (17, 99022),

Gene: Synopsis\_76 Start: 51357, Stop: 51542, Start Num: 3

Candidate Starts for Synopsis\_76:

(Start: 3 @51357 has 1 MA's), (7, 51408), (9, 51414),

Gene: Tenno\_79 Start: 51694, Stop: 51876, Start Num: 4

Candidate Starts for Tenno\_79:

(Start: 4 @51694 has 14 MA's), (9, 51754), (11, 51805), (16, 51868),

Gene: Truckee\_80 Start: 51793, Stop: 51978, Start Num: 4

Candidate Starts for Truckee\_80:

(Start: 4 @51793 has 14 MA's), (5, 51817), (9, 51853), (12, 51916), (13, 51931), (15, 51964), (16, 51970),

Gene: Westerlin\_78 Start: 52479, Stop: 52664, Start Num: 4

Candidate Starts for Westerlin\_78:

(2, 52470), (Start: 4 @52479 has 14 MA's), (9, 52536), (12, 52596), (14, 52635),