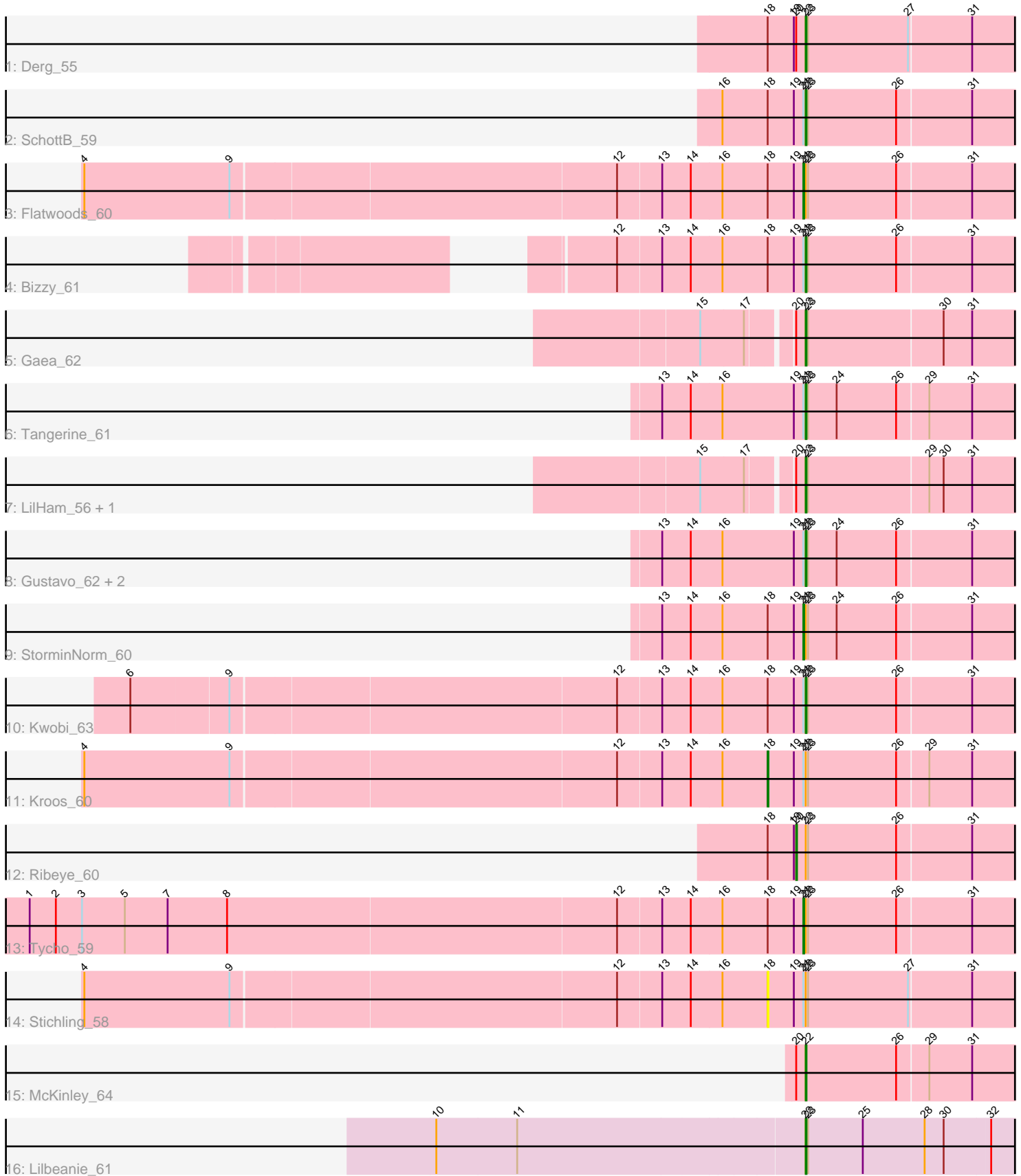


Pham 301793



Note: Tracks are now grouped by subcluster and scaled. Switching in subcluster is indicated by changes in track color. Track scale is now set by default to display the region 30 bp upstream of start 1 to 30 bp downstream of the last possible start. If this default region is judged to be packed too tightly with annotated starts, the track will be further scaled to only show that region of the ORF with annotated starts. This action will be indicated by adding "Zoomed" to the title. For starts, yellow indicates the location of called starts comprised solely of Glimmer/GeneMark auto-annotations, green indicates the location of called starts with at least 1 manual gene annotation.

Pham 301793 Report

This analysis was run 06/08/26 on database version 649.

Pham number 301793 has 19 members, 1 are drafts.

Phages represented in each track:

- Track 1 : Derg_55
- Track 2 : SchottB_59
- Track 3 : Flatwoods_60
- Track 4 : Bizzy_61
- Track 5 : Gaea_62
- Track 6 : Tangerine_61
- Track 7 : LilHam_56, Ashertheman_62
- Track 8 : Gustavo_62, Saronaya_62, Baumdotcom_58
- Track 9 : StorminNorm_60
- Track 10 : Kwobi_63
- Track 11 : Kroos_60
- Track 12 : Ribeye_60
- Track 13 : Tycho_59
- Track 14 : Stichling_58
- Track 15 : McKinley_64
- Track 16 : Lilbeanie_61

Summary of Final Annotations (See graph section above for start numbers):

The start number called the most often in the published annotations is 22, it was called in 13 of the 18 non-draft genes in the pham.

Genes that call this "Most Annotated" start:

- Ashertheman_62, Baumdotcom_58, Bizzy_61, Derg_55, Gaea_62, Gustavo_62, Kwobi_63, LilHam_56, Lilbeanie_61, McKinley_64, Saronaya_62, SchottB_59, Tangerine_61,

Genes that have the "Most Annotated" start but do not call it:

- Flatwoods_60, Kroos_60, Ribeye_60, Stichling_58, StorminNorm_60, Tycho_59,

Genes that do not have the "Most Annotated" start:

-

Summary by start number:

Start 18:

- Found in 10 of 19 (52.6%) of genes in pham
- Manual Annotations of this start: 1 of 18
- Called 20.0% of time when present
- Phage (with cluster) where this start called: Kroos_60 (DE1), Stichling_58 (DE1),

Start 20:

- Found in 6 of 19 (31.6%) of genes in pham
- Manual Annotations of this start: 1 of 18
- Called 16.7% of time when present
- Phage (with cluster) where this start called: Ribeye_60 (DE1),

Start 21:

- Found in 12 of 19 (63.2%) of genes in pham
- Manual Annotations of this start: 3 of 18
- Called 25.0% of time when present
- Phage (with cluster) where this start called: Flatwoods_60 (DE1), StorminNorm_60 (DE1), Tycho_59 (DE1),

Start 22:

- Found in 19 of 19 (100.0%) of genes in pham
- Manual Annotations of this start: 13 of 18
- Called 68.4% of time when present
- Phage (with cluster) where this start called: Ashertheman_62 (DE1), Baumdotcom_58 (DE1), Bizzy_61 (DE1), Derg_55 (DE1), Gaea_62 (DE1), Gustavo_62 (DE1), Kwobi_63 (DE1), LilHam_56 (DE1), Lilbeanie_61 (DE5), McKinley_64 (DE1), Saronaya_62 (DE1), SchottB_59 (DE1), Tangerine_61 (DE1),

Summary by clusters:

There are 2 clusters represented in this pham: DE1, DE5,

Info for manual annotations of cluster DE1:

- Start number 18 was manually annotated 1 time for cluster DE1.
- Start number 20 was manually annotated 1 time for cluster DE1.
- Start number 21 was manually annotated 3 times for cluster DE1.
- Start number 22 was manually annotated 12 times for cluster DE1.

Info for manual annotations of cluster DE5:

- Start number 22 was manually annotated 1 time for cluster DE5.

Gene Information:

Gene: Ashertheman_62 Start: 48524, Stop: 48796, Start Num: 22

Candidate Starts for Ashertheman_62:

(15, 48410), (17, 48464), (Start: 20 @48512 has 1 MA's), (Start: 22 @48524 has 13 MA's), (23, 48527), (29, 48674), (30, 48692), (31, 48728),

Gene: Baumdotcom_58 Start: 48035, Stop: 48307, Start Num: 22

Candidate Starts for Baumdotcom_58:

(13, 47855), (14, 47891), (16, 47930), (19, 48020), (Start: 21 @48032 has 3 MA's), (Start: 22 @48035 has 13 MA's), (23, 48038), (24, 48074), (26, 48149), (31, 48239),

Gene: Bizzy_61 Start: 48138, Stop: 48410, Start Num: 22

Candidate Starts for Bizzy_61:

(12, 47904), (13, 47958), (14, 47994), (16, 48033), (Start: 18 @48090 has 1 MA's), (19, 48123), (Start: 21 @48135 has 3 MA's), (Start: 22 @48138 has 13 MA's), (23, 48141), (26, 48252), (31, 48342),

Gene: Derg_55 Start: 46968, Stop: 47240, Start Num: 22

Candidate Starts for Derg_55:

(Start: 18 @46920 has 1 MA's), (19, 46953), (Start: 20 @46956 has 1 MA's), (Start: 22 @46968 has 13 MA's), (23, 46971), (27, 47097), (31, 47172),

Gene: Flatwoods_60 Start: 47605, Stop: 47880, Start Num: 21

Candidate Starts for Flatwoods_60:

(4, 46717), (9, 46900), (12, 47374), (13, 47428), (14, 47464), (16, 47503), (Start: 18 @47560 has 1 MA's), (19, 47593), (Start: 21 @47605 has 3 MA's), (Start: 22 @47608 has 13 MA's), (23, 47611), (26, 47722), (31, 47812),

Gene: Gaea_62 Start: 48297, Stop: 48569, Start Num: 22

Candidate Starts for Gaea_62:

(15, 48183), (17, 48237), (Start: 20 @48285 has 1 MA's), (Start: 22 @48297 has 13 MA's), (23, 48300), (30, 48465), (31, 48501),

Gene: Gustavo_62 Start: 48964, Stop: 49236, Start Num: 22

Candidate Starts for Gustavo_62:

(13, 48784), (14, 48820), (16, 48859), (19, 48949), (Start: 21 @48961 has 3 MA's), (Start: 22 @48964 has 13 MA's), (23, 48967), (24, 49003), (26, 49078), (31, 49168),

Gene: Kroos_60 Start: 48657, Stop: 48977, Start Num: 18

Candidate Starts for Kroos_60:

(4, 47814), (9, 47997), (12, 48471), (13, 48525), (14, 48561), (16, 48600), (Start: 18 @48657 has 1 MA's), (19, 48690), (Start: 21 @48702 has 3 MA's), (Start: 22 @48705 has 13 MA's), (23, 48708), (26, 48819), (29, 48855), (31, 48909),

Gene: Kwobi_63 Start: 49106, Stop: 49378, Start Num: 22

Candidate Starts for Kwobi_63:

(6, 48278), (9, 48398), (12, 48872), (13, 48926), (14, 48962), (16, 49001), (Start: 18 @49058 has 1 MA's), (19, 49091), (Start: 21 @49103 has 3 MA's), (Start: 22 @49106 has 13 MA's), (23, 49109), (26, 49220), (31, 49310),

Gene: LilHam_56 Start: 46247, Stop: 46519, Start Num: 22

Candidate Starts for LilHam_56:

(15, 46133), (17, 46187), (Start: 20 @46235 has 1 MA's), (Start: 22 @46247 has 13 MA's), (23, 46250), (29, 46397), (30, 46415), (31, 46451),

Gene: Lilbeanie_61 Start: 43535, Stop: 43810, Start Num: 22

Candidate Starts for Lilbeanie_61:

(10, 43082), (11, 43181), (Start: 22 @43535 has 13 MA's), (23, 43538), (25, 43607), (28, 43685), (30, 43709), (32, 43766),

Gene: McKinley_64 Start: 49837, Stop: 50109, Start Num: 22

Candidate Starts for McKinley_64:

(Start: 20 @49825 has 1 MA's), (Start: 22 @49837 has 13 MA's), (26, 49951), (29, 49987), (31, 50041),

Gene: Ribeye_60 Start: 48019, Stop: 48303, Start Num: 20

Candidate Starts for Ribeye_60:

(Start: 18 @47983 has 1 MA's), (19, 48016), (Start: 20 @48019 has 1 MA's), (Start: 22 @48031 has 13 MA's), (23, 48034), (26, 48145), (31, 48235),

Gene: Saronaya_62 Start: 48964, Stop: 49236, Start Num: 22

Candidate Starts for Saronaya_62:

(13, 48784), (14, 48820), (16, 48859), (19, 48949), (Start: 21 @48961 has 3 MA's), (Start: 22 @48964 has 13 MA's), (23, 48967), (24, 49003), (26, 49078), (31, 49168),

Gene: SchottB_59 Start: 48874, Stop: 49146, Start Num: 22

Candidate Starts for SchottB_59:

(16, 48769), (Start: 18 @48826 has 1 MA's), (19, 48859), (Start: 21 @48871 has 3 MA's), (Start: 22 @48874 has 13 MA's), (23, 48877), (26, 48988), (31, 49078),

Gene: Stichling_58 Start: 47967, Stop: 48287, Start Num: 18

Candidate Starts for Stichling_58:

(4, 47124), (9, 47307), (12, 47781), (13, 47835), (14, 47871), (16, 47910), (Start: 18 @47967 has 1 MA's), (19, 48000), (Start: 21 @48012 has 3 MA's), (Start: 22 @48015 has 13 MA's), (23, 48018), (27, 48144), (31, 48219),

Gene: StorminNorm_60 Start: 48603, Stop: 48878, Start Num: 21

Candidate Starts for StorminNorm_60:

(13, 48426), (14, 48462), (16, 48501), (Start: 18 @48558 has 1 MA's), (19, 48591), (Start: 21 @48603 has 3 MA's), (Start: 22 @48606 has 13 MA's), (23, 48609), (24, 48645), (26, 48720), (31, 48810),

Gene: Tangerine_61 Start: 48357, Stop: 48629, Start Num: 22

Candidate Starts for Tangerine_61:

(13, 48177), (14, 48213), (16, 48252), (19, 48342), (Start: 21 @48354 has 3 MA's), (Start: 22 @48357 has 13 MA's), (23, 48360), (24, 48396), (26, 48471), (29, 48507), (31, 48561),

Gene: Tycho_59 Start: 48124, Stop: 48399, Start Num: 21

Candidate Starts for Tycho_59:

(1, 47158), (2, 47191), (3, 47224), (5, 47278), (7, 47332), (8, 47407), (12, 47893), (13, 47947), (14, 47983), (16, 48022), (Start: 18 @48079 has 1 MA's), (19, 48112), (Start: 21 @48124 has 3 MA's), (Start: 22 @48127 has 13 MA's), (23, 48130), (26, 48241), (31, 48331),