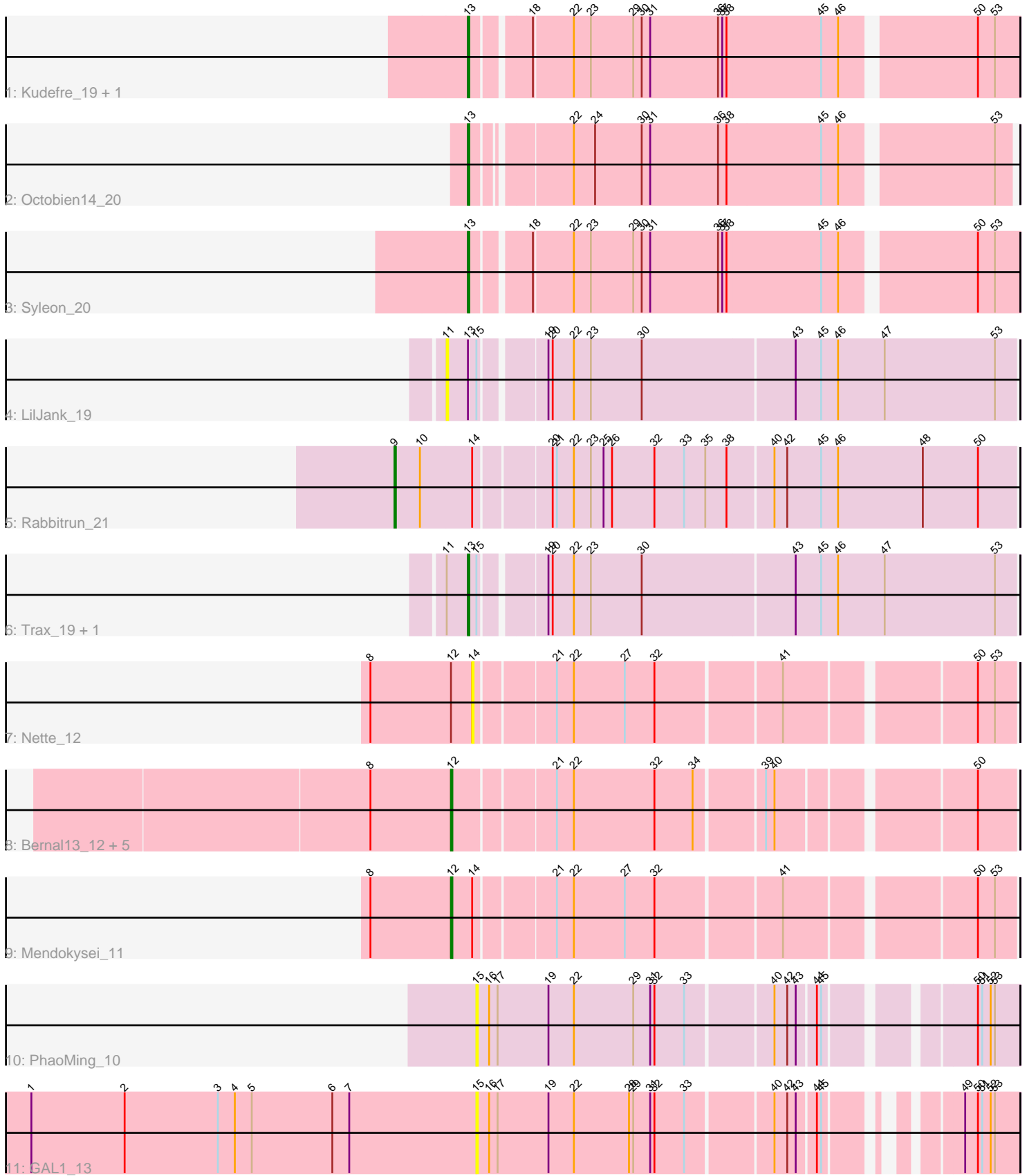


Pham 301809



Note: Tracks are now grouped by subcluster and scaled. Switching in subcluster is indicated by changes in track color. Track scale is now set by default to display the region 30 bp upstream of start 1 to 30 bp downstream of the last possible start. If this default region is judged to be packed too tightly with annotated starts, the track will be further scaled to only show that region of the ORF with annotated starts. This action will be indicated by adding "Zoomed" to the title. For starts, yellow indicates the location of called starts comprised solely of Glimmer/GeneMark auto-annotations, green indicates the location of called starts with at least 1 manual gene annotation.

Pham 301809 Report

This analysis was run 06/08/26 on database version 649.

Pham number 301809 has 18 members, 4 are drafts.

Phages represented in each track:

- Track 1 : Kudefre_19, Sephiroth_20
- Track 2 : Octobien14_20
- Track 3 : Syleon_20
- Track 4 : LilJank_19
- Track 5 : Rabbitrun_21
- Track 6 : Trax_19, Neville_19
- Track 7 : Nette_12
- Track 8 : Bernal13_12, ZenTime222_12, Whitty_12, Nairb_12, RonRayGun_12, Ibrahim_12
- Track 9 : Mendokysei_11
- Track 10 : PhaoMing_10
- Track 11 : GAL1_13

Summary of Final Annotations (See graph section above for start numbers):

The start number called the most often in the published annotations is 12, it was called in 7 of the 14 non-draft genes in the pham.

Genes that call this "Most Annotated" start:

- Bernal13_12, Ibrahim_12, Mendokysei_11, Nairb_12, RonRayGun_12, Whitty_12, ZenTime222_12,

Genes that have the "Most Annotated" start but do not call it:

- Nette_12,

Genes that do not have the "Most Annotated" start:

- GAL1_13, Kudefre_19, LilJank_19, Neville_19, Octobien14_20, PhaoMing_10, Rabbitrun_21, Sephiroth_20, Syleon_20, Trax_19,

Summary by start number:

Start 9:

- Found in 1 of 18 (5.6%) of genes in pham
- Manual Annotations of this start: 1 of 14

- Called 100.0% of time when present
- Phage (with cluster) where this start called: Rabbitrun_21 (DU2),

Start 11:

- Found in 3 of 18 (16.7%) of genes in pham
- No Manual Annotations of this start.
- Called 33.3% of time when present
- Phage (with cluster) where this start called: LilJank_19 (DU2),

Start 12:

- Found in 8 of 18 (44.4%) of genes in pham
- Manual Annotations of this start: 7 of 14
- Called 87.5% of time when present
- Phage (with cluster) where this start called: Bernal13_12 (T), Ibrahim_12 (T), Mendokysei_11 (T), Nairb_12 (T), RonRayGun_12 (T), Whitty_12 (T), ZenTime222_12 (T),

Start 13:

- Found in 7 of 18 (38.9%) of genes in pham
- Manual Annotations of this start: 6 of 14
- Called 85.7% of time when present
- Phage (with cluster) where this start called: Kudefre_19 (DU1), Neville_19 (DU2), Octobien14_20 (DU1), Sephiroth_20 (DU1), Syleon_20 (DU1), Trax_19 (DU2),

Start 14:

- Found in 3 of 18 (16.7%) of genes in pham
- No Manual Annotations of this start.
- Called 33.3% of time when present
- Phage (with cluster) where this start called: Nette_12 (T),

Start 15:

- Found in 5 of 18 (27.8%) of genes in pham
- No Manual Annotations of this start.
- Called 40.0% of time when present
- Phage (with cluster) where this start called: GAL1_13 (singleton), PhaoMing_10 (UNK),

Summary by clusters:

There are 5 clusters represented in this pham: DU1, DU2, UNK, T, singleton,

Info for manual annotations of cluster DU1:

- Start number 13 was manually annotated 4 times for cluster DU1.

Info for manual annotations of cluster DU2:

- Start number 9 was manually annotated 1 time for cluster DU2.
- Start number 13 was manually annotated 2 times for cluster DU2.

Info for manual annotations of cluster T:

- Start number 12 was manually annotated 7 times for cluster T.

Gene Information:

Gene: Bernal13_12 Start: 9006, Stop: 9371, Start Num: 12

Candidate Starts for Bernal13_12:

(8, 8949), (Start: 12 @9006 has 7 MA's), (21, 9072), (22, 9084), (32, 9141), (34, 9168), (39, 9213), (40, 9219), (50, 9345),

Gene: GAL1_13 Start: 8895, Stop: 9233, Start Num: 15

Candidate Starts for GAL1_13:

(1, 8580), (2, 8646), (3, 8712), (4, 8724), (5, 8736), (6, 8793), (7, 8805), (15, 8895), (16, 8904), (17, 8910), (19, 8946), (22, 8964), (28, 9003), (29, 9006), (31, 9018), (32, 9021), (33, 9042), (40, 9099), (42, 9108), (43, 9114), (44, 9126), (45, 9129), (49, 9195), (50, 9204), (51, 9207), (52, 9213), (53, 9216),

Gene: Ibrahim_12 Start: 9006, Stop: 9371, Start Num: 12

Candidate Starts for Ibrahim_12:

(8, 8949), (Start: 12 @9006 has 7 MA's), (21, 9072), (22, 9084), (32, 9141), (34, 9168), (39, 9213), (40, 9219), (50, 9345),

Gene: Kudrefre_19 Start: 11452, Stop: 11817, Start Num: 13

Candidate Starts for Kudrefre_19:

(Start: 13 @11452 has 6 MA's), (18, 11488), (22, 11515), (23, 11527), (29, 11557), (30, 11563), (31, 11569), (36, 11617), (37, 11620), (38, 11623), (45, 11689), (46, 11701), (50, 11788), (53, 11800),

Gene: LilJank_19 Start: 11313, Stop: 11699, Start Num: 11

Candidate Starts for LilJank_19:

(11, 11313), (Start: 13 @11328 has 6 MA's), (15, 11334), (19, 11373), (20, 11376), (22, 11391), (23, 11403), (30, 11439), (43, 11544), (45, 11562), (46, 11574), (47, 11607), (53, 11685),

Gene: Mendokysei_11 Start: 8981, Stop: 9349, Start Num: 12

Candidate Starts for Mendokysei_11:

(8, 8924), (Start: 12 @8981 has 7 MA's), (14, 8996), (21, 9047), (22, 9059), (27, 9095), (32, 9116), (41, 9200), (50, 9323), (53, 9335),

Gene: Nairb_12 Start: 9006, Stop: 9371, Start Num: 12

Candidate Starts for Nairb_12:

(8, 8949), (Start: 12 @9006 has 7 MA's), (21, 9072), (22, 9084), (32, 9141), (34, 9168), (39, 9213), (40, 9219), (50, 9345),

Gene: Nette_12 Start: 9005, Stop: 9358, Start Num: 14

Candidate Starts for Nette_12:

(8, 8933), (Start: 12 @8990 has 7 MA's), (14, 9005), (21, 9056), (22, 9068), (27, 9104), (32, 9125), (41, 9209), (50, 9332), (53, 9344),

Gene: Neville_19 Start: 11277, Stop: 11648, Start Num: 13

Candidate Starts for Neville_19:

(11, 11262), (Start: 13 @11277 has 6 MA's), (15, 11283), (19, 11322), (20, 11325), (22, 11340), (23, 11352), (30, 11388), (43, 11493), (45, 11511), (46, 11523), (47, 11556), (53, 11634),

Gene: Octobien14_20 Start: 12509, Stop: 12865, Start Num: 13

Candidate Starts for Octobien14_20:

(Start: 13 @12509 has 6 MA's), (22, 12569), (24, 12584), (30, 12617), (31, 12623), (36, 12671), (38, 12677), (45, 12743), (46, 12755), (53, 12854),

Gene: PhaoMing_10 Start: 7503, Stop: 7853, Start Num: 15

Candidate Starts for PhaoMing_10:

(15, 7503), (16, 7512), (17, 7518), (19, 7554), (22, 7572), (29, 7614), (31, 7626), (32, 7629), (33, 7650), (40, 7707), (42, 7716), (43, 7722), (44, 7734), (45, 7737), (50, 7824), (51, 7827), (52, 7833), (53, 7836),

Gene: Rabbitrun_21 Start: 11781, Stop: 12206, Start Num: 9

Candidate Starts for Rabbitrun_21:

(Start: 9 @11781 has 1 MA's), (10, 11799), (14, 11835), (20, 11883), (21, 11886), (22, 11898), (23, 11910), (25, 11919), (26, 11925), (32, 11955), (33, 11976), (35, 11991), (38, 12006), (40, 12036), (42, 12045), (45, 12069), (46, 12081), (48, 12141), (50, 12180),

Gene: RonRayGun_12 Start: 9006, Stop: 9371, Start Num: 12

Candidate Starts for RonRayGun_12:

(8, 8949), (Start: 12 @9006 has 7 MA's), (21, 9072), (22, 9084), (32, 9141), (34, 9168), (39, 9213), (40, 9219), (50, 9345),

Gene: Sephiroth_20 Start: 11623, Stop: 11988, Start Num: 13

Candidate Starts for Sephiroth_20:

(Start: 13 @11623 has 6 MA's), (18, 11659), (22, 11686), (23, 11698), (29, 11728), (30, 11734), (31, 11740), (36, 11788), (37, 11791), (38, 11794), (45, 11860), (46, 11872), (50, 11959), (53, 11971),

Gene: Syleon_20 Start: 11545, Stop: 11910, Start Num: 13

Candidate Starts for Syleon_20:

(Start: 13 @11545 has 6 MA's), (18, 11581), (22, 11608), (23, 11620), (29, 11650), (30, 11656), (31, 11662), (36, 11710), (37, 11713), (38, 11716), (45, 11782), (46, 11794), (50, 11881), (53, 11893),

Gene: Trax_19 Start: 11277, Stop: 11648, Start Num: 13

Candidate Starts for Trax_19:

(11, 11262), (Start: 13 @11277 has 6 MA's), (15, 11283), (19, 11322), (20, 11325), (22, 11340), (23, 11352), (30, 11388), (43, 11493), (45, 11511), (46, 11523), (47, 11556), (53, 11634),

Gene: Whitty_12 Start: 9006, Stop: 9371, Start Num: 12

Candidate Starts for Whitty_12:

(8, 8949), (Start: 12 @9006 has 7 MA's), (21, 9072), (22, 9084), (32, 9141), (34, 9168), (39, 9213), (40, 9219), (50, 9345),

Gene: ZenTime222_12 Start: 9006, Stop: 9371, Start Num: 12

Candidate Starts for ZenTime222_12:

(8, 8949), (Start: 12 @9006 has 7 MA's), (21, 9072), (22, 9084), (32, 9141), (34, 9168), (39, 9213), (40, 9219), (50, 9345),