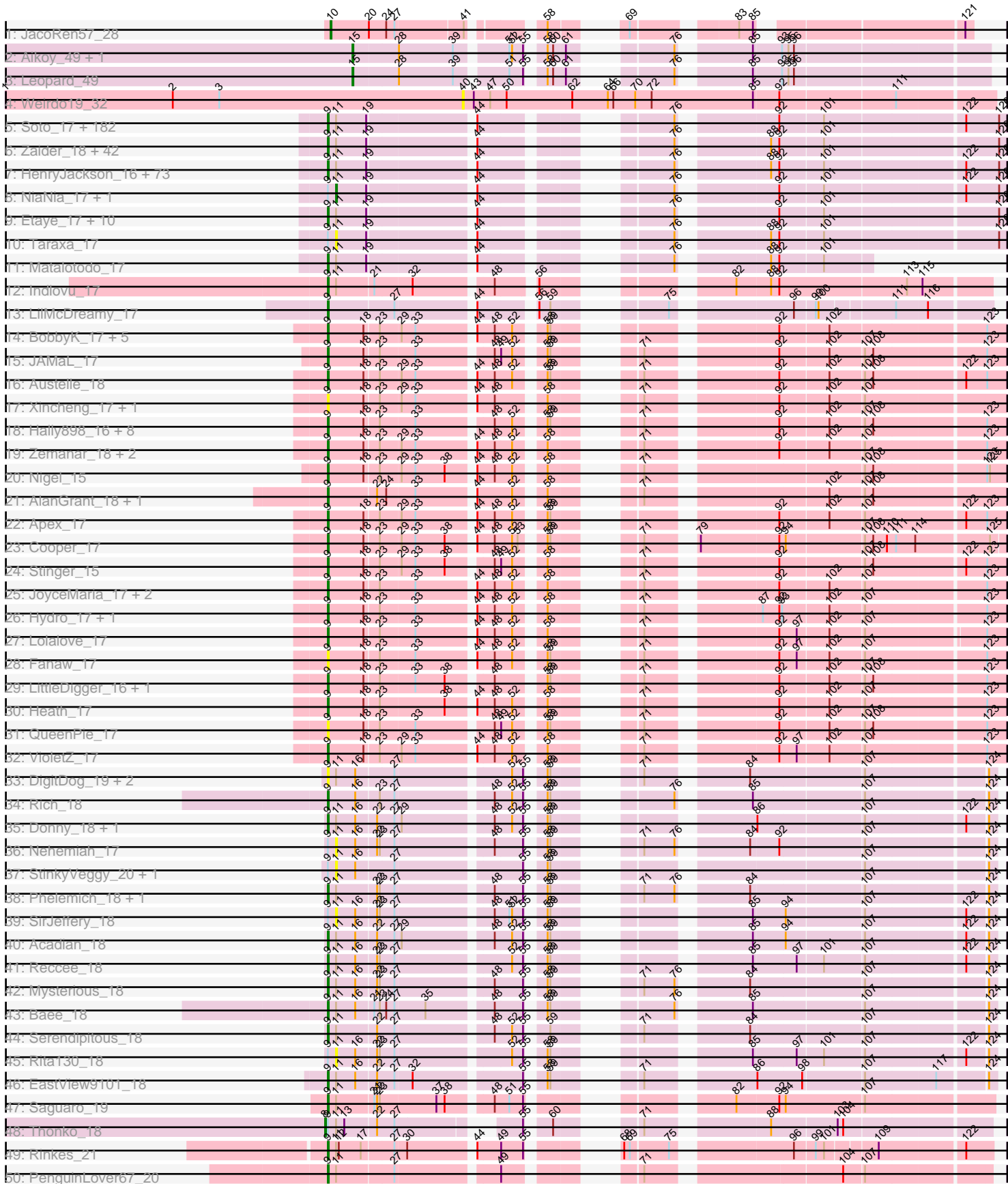
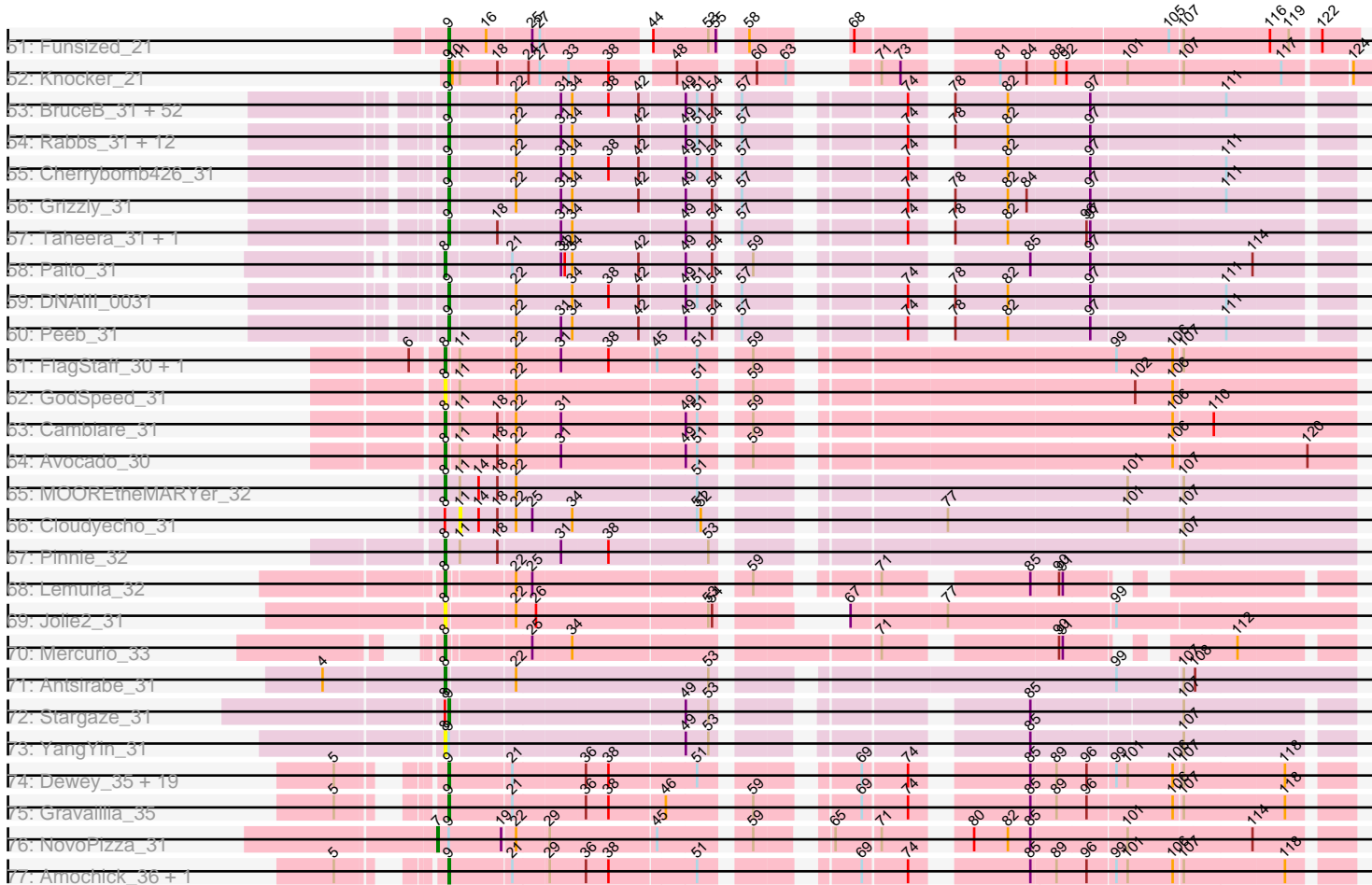


Pham 302962



Pham 302962



Note: Tracks are now grouped by subcluster and scaled. Switching in subcluster is indicated by changes in track color. Track scale is now set by default to display the region 30 bp upstream of start 1 to 30 bp downstream of the last possible start. If this default region is judged to be packed too tightly with annotated starts, the track will be further scaled to only show that region of the ORF with annotated starts. This action will be indicated by adding "Zoomed" to the title. For starts, yellow indicates the location of called starts comprised solely of Glimmer/GeneMark auto-annotations, green indicates the location of called starts with at least 1 manual gene annotation.

Pham 302962 Report

This analysis was run 06/08/26 on database version 649.

Pham number 302962 has 498 members, 62 are drafts.

Phages represented in each track:

- Track 1 : JacoRen57_28
- Track 2 : Aikoy_49, Onyinye_50
- Track 3 : Leopard_49
- Track 4 : Weirido19_32
- Track 5 : Soto_17, TallGrassMM_17, HSavage_17, Phergie_16, Simielle_16, Struggle_16, Gyarad_0017, Cornobble_16, Vaishali24_16, Phamished_17, FluffyNinja_17, Mesmerelda_16, Gwilliam_17, Yoshand_17, Virgeve_16, Vivaldi_17, Plmatters_17, Mcshane_16, Newman_17, Nacho_0017, Hartsy_17, CheetO_17, Piglet_0016, Xavier_16, Squid_17, Daffy_17, Morty_17, CamL_17, Antonia_16, Roscoe_18, DelRivs_16, BlueHusk_17, KlimbOn_17, Suffolk_17, PhenghisKhan_16, Grand2040_16, ImtiyazSitla_16, Kikipoo_17, FugateOSU_16, DonSanchon_16, Jesabah_17, PhrankReynolds_16, Maru_16, Aelin_16, BlacksBerry_16, Maskar_16, Labeouficaum_16, CharlieGBrown_16, MRabcd_16, Megatron_17, Placalicious_16, BatteryCK_16, Swish_17, Flake_17, Haimas_17, Gwennie1_17, Oline_16, Orwigg_16, Jillium_16, Nicole21_17, Hetaeria_17, Chorkpop_17, Phleuron_16, Pherdinand_17, Derpp_16, Orfeu_16, Pinkman_16, KLucky39_17, Selr12_17, Chipette_18, Virapocalypse_17, Childish_16, Ricotta_16, Soile_17, Mulan_16, Prickles_17, MichaelPhcott_16, DolOn_18, AngelCake_17, IsaacEli_17, Iridessa_17, RedRaider89_18, PallasAthena_17, Magic8_17, Mana_16, Zonia_17, True_16, TyrionL_16, Boehler_17, Olak_16, JangoPhett_17, OSmaximus_17, Durga_17, BlackStallion_17, Bishoperium_16, Mesh1_17, Mecca_16, UAch1_17, AbsoluteMadLad_16, Happabalu_17, TomBombadil_17, Craff_17, Gareth_16, Chute_16, GreenChile_17, Beaglebox_16, Mag7_16, FriarPreacher_17, Cannibal_17, Bluephacebaby_16, Ashraf_16, Freya_16, Scrick_16, Pacifista_16, Kailash_17, Chaelin_16, Cobra_17, Orion_17, BoogieWoogie_16, SassyCat97_16, Emiris_17, PG1_17, QueenBeane_17, Telesworld_16, Giraffe_17, Omniscient_17, Hocus_16, KingTut_16, Vaticameos_17, ElvisPhasley_17, Potter_16, Held_17, Longacauda_16, OneBrain_17, FremontTroll_17, Lego3393_17, Kimbrough_17, Roliet_17, Anderson_17, Harvey_17, Tomlarah_17, Nyala_16, LemonSlice_17, Phareon_17, MitKao_17, Triad_17, Inverness_17, Hertubise_17, Jiminy_16, Samaymay_17, Banjo_16, Windsor_16, SirBeauregard_16, Chuni_16, Thora_17, HighStump_16, Larson_18, HogWash_16, LasagnaCat_17, Altwerkus_16, Frankicide_17, Eremos_17, LuckyMarjie_16, Daka_17, Katniss_17, Cher_16, Colbert_17, Brilliant_17, Veritas_16, Skippy_17, Coletti_17, LeiMonet_17, TooFast2Furius_18, YouGoGlencoco_17, Eugenia_17, Serpentine_0017, Cosmolli16_16, ShiVal_17, Chah_17, Lehmann_17, Kloppinator_17, PhatCats2014_17, Nathan_17

- Track 6 : Zaider_18, JacAttac_17, Khan1_17, Karn_16, ABU_17, Vista_17, Rimu_17, Solosis_16, Roy17_17, Serendipity_17, Olive_17, PhatLouie_17, DuchessDung_16, MrPhizzler_17, Pipsqueak_17, UncleHowie_17, Morgushi_17, Timmi_16, PinheadLarry_17, Sigman_17, MelsMeow_16, Wallhey_16, Phipps_17, Kwadwo_16, Waterdiva_17, Kwksand96_16, Scoot17C_17, ProfessorX_17, Lulumae_16, Vortex_17, Lumine_16, Oosterbaan_17, Legolas_16, GeneCoco_17, Adriana_17, Apizium_16, Dice_16, Trypo_17, Aleia_17, Puhltonio_17, Plata_16, Swiphy_17, Nova1_16
- Track 7 : HenryJackson_16, Podrick_17, Fringe_17, Numberben_17, Carthage_16, Andre_17, OliverWalter_17, Doddsville_17, Dione_16, Toni_16, JakeO_16, Spartan300_17, Mosaic_16, SallyH_17, Hamish_17, ShadowBud_17, Robyn_16, Mikota_17, ThreeOh3D2_17, Badfish_17, Mutante_16, Aonishiki_17, Keitherie_17, Crownjwl_17, Inchworm_17, DirtJuice_17, Jiraiya_16, Riverton_17, Slatt_17, Burr_16, DaddyDaniels_17, Valjean_17, MiniBoss_17, Hekos_16, Duggie_16, Gophee_17, Horchata_17, Thunderbird_16, DoesntMatter_17, SDcharge11_17, Riggan_17, Fang_17, Quisquillae_17, Manad_16, PhrodoBaggins_16, JDog_16, Lasso_17, Sheila_17, LostAndPhound_16, Schadenfreude_16, Tooj_17, Haleema_16, Dati_17, AltPhacts_17, Lulwa_17, Charles1_17, Iridoclysis_17, Chunky_17, Pops_17, CampRoach_17, Dingo_17, Fozzie_16, EmpTee_17, Basato_18, Cornbread_16, Buckeye_17, RedMaple_16, Kahve_16, Usavi_17, Phunky_17, Squiggle_17, Megamind20_17, KingVeVeVe_17, Surely_17
- Track 8 : NiaNia_17, Lopsy_16
- Track 9 : Etaye_17, Melc17_17, Sophia_16, Schueller_16, FleetyMac_16, LeeLot_17, Murdoc_17, SilverBell_17, CaspiBoi_16, Zelda_17, Weher20_17
- Track 10 : Taraxa_17
- Track 11 : Matalotodo_17
- Track 12 : Indlovu_17
- Track 13 : LilMcDreamy_17
- Track 14 : BobbyK_17, Fortunato_17, Magpie_17, Mudslide_17, Frederick_17, Prince_17
- Track 15 : JAMaL_17
- Track 16 : Austelle_18
- Track 17 : Xincheng_17, JaguarMi_18
- Track 18 : Hally898_16, Nanao_16, GinPorsche_16, Lambano_16, ChrisnMich_16, Epah_16, Poster_16, Antihero_16, Ahwei_16
- Track 19 : Zemanar_18, RawrgerThat_17, Waleliano_17
- Track 20 : Nigel_15
- Track 21 : AlanGrant_18, Vincenzo_18
- Track 22 : Apex_17
- Track 23 : Cooper_17
- Track 24 : Stinger_15
- Track 25 : JoyceMaria_17, Mithril_17, BrownCNA_18
- Track 26 : Hydro_17, Hangman_17
- Track 27 : Lolalove_17
- Track 28 : Fanaw_17
- Track 29 : LittleDigger_16, Renkei_16
- Track 30 : Heath_17
- Track 31 : QueenPie_17
- Track 32 : VioletZ_17
- Track 33 : DigitDog_19, Shenyu_18, Nangang_18
- Track 34 : Rich_18
- Track 35 : Donny_18, Suigeneris_18
- Track 36 : Nehemiah_17

- Track 37 : StinkyVeggy_20, KarasumaRum_20
- Track 38 : Phelemich_18, Reprobate_18
- Track 39 : SirJeffery_18
- Track 40 : Acadian_18
- Track 41 : Reccee_18
- Track 42 : Mysterious_18
- Track 43 : Bae_18
- Track 44 : Serendipitous_18
- Track 45 : Rita130_18
- Track 46 : EastView9101_18
- Track 47 : Saguaro_19
- Track 48 : Thonko_18
- Track 49 : Rinkes_21
- Track 50 : PenguinLover67_20
- Track 51 : Funsized_21
- Track 52 : Knocker_21
- Track 53 : BruceB_31, Richarlison_31, Sweets_31, Halo_31, Kareem_31, Frosty24_31, Zombie_31, Crespo_31, Darionha_31, MZKinsey_31, Kasen3_31, Camri_31, JorRay_31, Phreak_31, CLED96_31, Olga_31, Mowgli_31, Annihilator_31, ShaboiShabazz_31, Jane_31, DMoney_31, Wendigo_32, PinkYoshi_31, Phish_31, CassieYates_31, Angel_31, TinaBug_31, GoldenAsh_31, DingDing_31, Hope_31, Remy19_31, TomBrady_31, Marmie_31, OctaviousRex_31, Renaissance_31, Gideon_31, Avrafan_31, ZoMa_31, Schiebel_31, Sizemore_31, BQuat_31, Barkley26_31, Coleslaw_31, BPs_31, Maliketh_31, AzulaCat_31, Jeilious_31, Neoh_31, Cedasite_31, LouisV14_31, Plagueis_31, Ruriko_32, Gomashi_31
- Track 54 : Rabbs_31, Chance64_31, Sneeze_31, Jolene_31, Rattrick_31, Phloodle_31, ECartman_31, Periodt_31, AizenPogi_31, Hotshotbaby7_31, Aroostook_31, Liefie_31, Jonghyun_31
- Track 55 : Cherrybomb426_31
- Track 56 : Grizzly_31
- Track 57 : Taheera_31, Terror_31
- Track 58 : Paito_31
- Track 59 : DNAIII_0031
- Track 60 : Peeb_31
- Track 61 : FlagStaff_30, Pace1224_30
- Track 62 : GodSpeed_31
- Track 63 : Cambiare_31
- Track 64 : Avocado_30
- Track 65 : MOOREtheMARYer_32
- Track 66 : Cloudyecho_31
- Track 67 : Pinnie_32
- Track 68 : Lemuria_32
- Track 69 : Jolie2_31
- Track 70 : Mercurio_33
- Track 71 : Antsirabe_31
- Track 72 : Stargaze_31
- Track 73 : YangYin_31
- Track 74 : Dewey_35, Forge_35, Hail_35, Luna22_35, Hadrien_36, HH92_35, Wishmaker_35, OBUpride_36, Amymech_36, Gancho_35, Webster2_36, Luke_36, Giles_35, LilHazelNut_36, Ubuntu_36, DeepSoil15_36, Kinbote_36, BloominB_36, Ein37_36, Evanesce_35
- Track 75 : Gravallia_35
- Track 76 : NovoPizza_31

- Track 77 : Amochick_36, Daegal_37

Summary of Final Annotations (See graph section above for start numbers):

The start number called the most often in the published annotations is 9, it was called in 420 of the 436 non-draft genes in the pham.

Genes that call this "Most Annotated" start:

- ABU_17, AbsoluteMadLad_16, Acadian_18, Adriana_17, Aelin_16, Ahwei_16, AizenPogi_31, AlanGrant_18, Aleia_17, AltPhacts_17, Altwerkus_16, Amochick_36, Amymech_36, Anderson_17, Andre_17, AngelCake_17, Angel_31, Annihilator_31, Antihero_16, Antonia_16, Aonishiki_17, Apex_17, Apizium_16, Aroostook_31, Ashraf_16, Austelle_18, Avrafan_31, AzulaCat_31, BPs_31, BQuat_31, Badfish_17, Bae_18, Banjo_16, Barkley26_31, Basato_18, BatteryCK_16, Beaglebox_16, Bishoperium_16, BlackStallion_17, BlacksBerry_16, BloominB_36, BlueHusk_17, Bluephacebaby_16, BobbyK_17, Boehler_17, BoogieWoogie_16, Brilliant_17, BrownCNA_18, BruceB_31, Buckeye_17, Burr_16, CLED96_31, CamL_17, CampRoach_17, Camri_31, Cannibal_17, Carthage_16, Caspiboi_16, CassieYates_31, Cedasite_31, Chaelin_16, Chah_17, Chance64_31, Charles1_17, CharlieGBrown_16, CheetO_17, Cher_16, Cherrybomb426_31, Childish_16, Chipette_18, Chorkpop_17, ChrisnMich_16, Chuni_16, Chunky_17, Chute_16, Cobra_17, Colbert_17, Coleslaw_31, Coletti_17, Cooper_17, Cornbread_16, Cornobble_16, Cosmolli16_16, Craff_17, Crespo_31, Crownjwl_17, DMoney_31, DNAIII_0031, DaddyDaniels_17, Daegal_37, Daffy_17, Daka_17, Darionha_31, Dati_17, DeepSoil15_36, DelRivs_16, Derpp_16, Dewey_35, Dice_16, DigitDog_19, DingDing_31, Dingo_17, Dione_16, DirtJuice_17, Doddsville_17, DoesntMatter_17, DoOn_18, DonSanchon_16, Donny_18, DuchessDung_16, Duggie_16, Durga_17, ECartman_31, EastView9101_18, Ein37_36, ElvisPhasley_17, Emiris_17, EmpTee_17, Epah_16, Eremos_17, Etaye_17, Eugenia_17, Evanesce_35, Fanaw_17, Fang_17, Flake_17, FleetyMac_16, FluffyNinja_17, Forge_35, Fortunato_17, Fozzie_16, Frankicide_17, Frederick_17, FremontTroll_17, Freya_16, FriarPreacher_17, Fringe_17, Frosty24_31, FugateOSU_16, Funsized_21, Gancho_35, Gareth_16, GeneCoco_17, Gideon_31, Giles_35, GinPorsche_16, Giraffe_17, GoldenAsh_31, Gomashi_31, Gophee_17, Grand2040_16, Gravallia_35, GreenChile_17, Grizzly_31, Gwennie1_17, Gwilliam_17, Gyarad_0017, HH92_35, HSavage_17, Hadrien_36, Hail_35, Haimas_17, Haleema_16, Hally898_16, Halo_31, Hamish_17, Hangman_17, Happabalu_17, Hartsy_17, Harvey_17, Heath_17, Hekos_16, Held_17, HenryJackson_16, Hertubise_17, Hetaeria_17, HighStump_16, Hocus_16, HogWash_16, Hope_31, Horchata_17, Hotshotbaby7_31, Hydro_17, ImtiyazSitla_16, Inchworm_17, Indlovu_17, Inverness_17, Iridessa_17, Iridoclysis_17, IsaacEli_17, JAMaL_17, JDog_16, JacAttac_17, JaguarMi_18, JakeO_16, Jane_31, JangoPhett_17, Jeilious_31, Jesabah_17, Jillium_16, Jiminy_16, Jiraiya_16, Jolene_31, Jonghyun_31, JorRay_31, JoyceMaria_17, KLucky39_17, Kahve_16, Kailash_17, Kareem_31, Karn_16, Kasen3_31, Katniss_17, Keitherie_17, Khan1_17, Kikipoo_17, Kimbrough_17, Kinbote_36, KingTut_16, KingVeVeVe_17, KlimbOn_17, Kloppinator_17, Knocker_21, Kwadwo_16, Kwksand96_16, Labeouficaum_16, Lambano_16, Larson_18, LasagnaCat_17, Lasso_17, LeeLot_17, Lego3393_17, Legolas_16, Lehmann_17, LeiMonet_17, LemonSlice_17, Liefie_31, LilHazelNut_36, LilMcDreamy_17, LittleDigger_16, Lolalove_17, Longacauda_16, LostAndPhound_16, LouisV14_31, LuckyMarjie_16, Luke_36, Lulumae_16,

Lulwa_17, Lumine_16, Luna22_35, MRabcd_16, MZKinsey_31, Mag7_16, Magic8_17, Magpie_17, Maliketh_31, Mana_16, Manad_16, Marmie_31, Maru_16, Maskar_16, Matalotodo_17, Mcshane_16, Mecca_16, Megamind20_17, Megatron_17, Melc17_17, MelsMeow_16, Mesh1_17, Mesmerelda_16, MichaelPhcott_16, Mikota_17, MiniBoss_17, MitKao_17, Mithril_17, Morgushi_17, Morty_17, Mosaic_16, Mowgli_31, MrPhizzler_17, Mudslide_17, Mulan_16, Murdoc_17, Mutante_16, Mysterious_18, Nacho_0017, Nanao_16, Nangang_18, Nathan_17, Neoh_31, Newman_17, Nicole21_17, Nigel_15, Nova1_16, Numberten_17, Nyala_16, OBUpride_36, OSmaximus_17, OctaviousRex_31, Olak_16, Olga_31, Oline_16, Olive_17, OliverWalter_17, Omniscient_17, OneBrain_17, Oosterbaan_17, Orfeu_16, Orion_17, Orwigg_16, PG1_17, Pacifista_16, PallasAthena_17, Peeb_31, PenguinLover67_20, Periodt_31, Phamished_17, Phareon_17, PhatCats2014_17, PhatLouie_17, Phelemich_18, Phenghiskhan_16, Pherdinand_17, Phergie_16, Phipps_17, Phish_31, Phleuron_16, Phloodle_31, PhrankReynolds_16, Phreak_31, PhrodoBaggins_16, Phunky_17, Piglet_0016, PinheadLarry_17, PinkYoshi_31, Pinkman_16, Pipsqueak_17, Placalicious_16, Plagueis_31, Plata_16, Plmatters_17, Podrick_17, Pops_17, Poster_16, Potter_16, Prickles_17, Prince_17, ProfessorX_17, Puhltonio_17, QueenBeane_17, QueenPie_17, Quisquiliae_17, Rabbs_31, Rattrick_31, RawrgerThat_17, Reccee_18, RedMaple_16, RedRaider89_18, Remy19_31, Renaissance_31, Renkei_16, Reprobate_18, Rich_18, Richarlison_31, Ricotta_16, Riggan_17, Rimu_17, Rinkes_21, Riverton_17, Robyn_16, Roliet_17, Roscoe_18, Roy17_17, Ruriko_32, SDcharge11_17, Saguario_19, SallyH_17, Samaymay_17, SassyCat97_16, Schadenfreude_16, Schiebel_31, Schueller_16, Scoot17C_17, Scrick_16, Selr12_17, Serendipitous_18, Serendipity_17, Serpentine_0017, ShaboiShabazz_31, ShadowBud_17, Sheila_17, Shenyu_18, ShiVal_17, Sigman_17, SilverBell_17, Simielle_16, SirBeauregard_16, Sizemore_31, Skippy_17, Slatt_17, Sneeze_31, Soile_17, Solosis_16, Sophia_16, Soto_17, Spartan300_17, Squid_17, Squiggle_17, Stargaze_31, Stinger_15, Struggle_16, Suffolk_17, Suigeneris_18, Surely_17, Sweets_31, Swiphy_17, Swish_17, Taheera_31, TallGrassMM_17, Telesworld_16, Terror_31, Thora_17, ThreeOh3D2_17, Thunderbird_16, Timmi_16, TinaBug_31, TomBombadil_17, TomBrady_31, Tomlarah_17, Toni_16, TooFast2Furius_18, Tooj_17, Triad_17, True_16, Trypo_17, TyrionL_16, UAch1_17, Ubuntu_36, UncleHowie_17, Usavi_17, Vaishali24_16, Valjean_17, Vaticameos_17, Veritas_16, Vincenzo_18, VioletZ_17, Virapocalypse_17, Virgeve_16, Vista_17, Vivaldi_17, Vortex_17, Waleliano_17, Wallhey_16, Waterdiva_17, Webster2_36, Weher20_17, Wendigo_32, Windsor_16, Wishmaker_35, Xavier_16, Xincheng_17, Yoshand_17, YouGoGlencoco_17, Zaider_18, Zelda_17, Zemanar_18, ZoMa_31, Zombie_31, Zonia_17,

Genes that have the "Most Annotated" start but do not call it:

- KarasumaRum_20, Lopsy_16, Nehemiah_17, NiaNia_17, NovoPizza_31, Rita130_18, SirJeffery_18, StinkyVeggy_20, Taraxa_17, Thonko_18, YangYin_31,

Genes that do not have the "Most Annotated" start:

- Aikoy_49, Antsirabe_31, Avocado_30, Cambiare_31, Cloudyecho_31, FlagStaff_30, GodSpeed_31, JacoRen57_28, Jolie2_31, Lemuria_32, Leopard_49, MOOREtheMARYer_32, Mercurio_33, Onyinye_50, Pace1224_30, Paito_31, Pinnie_32, Weirdo19_32,

Summary by start number:

Start 7:

- Found in 1 of 498 (0.2%) of genes in pham
- Manual Annotations of this start: 1 of 436
- Called 100.0% of time when present
- Phage (with cluster) where this start called: NovoPizza_31 (Q),

Start 8:

- Found in 16 of 498 (3.2%) of genes in pham
- Manual Annotations of this start: 10 of 436
- Called 87.5% of time when present
- Phage (with cluster) where this start called: Antsirabe_31 (G5), Avocado_30 (G2), Cambiare_31 (G2), FlagStaff_30 (G2), GodSpeed_31 (G2), Jolie2_31 (G4), Lemuria_32 (G4), MOOREtheMARYer_32 (G3), Mercurio_33 (G4), Pace1224_30 (G2), Paito_31 (G1), Pinnie_32 (G3), Thonko_18 (B8), YangYin_31 (G5),

Start 9:

- Found in 480 of 498 (96.4%) of genes in pham
- Manual Annotations of this start: 420 of 436
- Called 97.7% of time when present
- Phage (with cluster) where this start called: ABU_17 (B1), AbsoluteMadLad_16 (B1), Acadian_18 (B5), Adriana_17 (B1), Aelin_16 (B1), Ahwei_16 (B4), AizenPogi_31 (G1), AlanGrant_18 (B4), Aleia_17 (B1), AltPhacts_17 (B1), Altwerkus_16 (B1), Amochick_36 (Q), Amymech_36 (Q), Anderson_17 (B1), Andre_17 (B1), AngelCake_17 (B1), Angel_31 (G1), Annihilator_31 (G1), Antihero_16 (B4), Antonia_16 (B1), Aonishiki_17 (B1), Apex_17 (B4), Apizium_16 (B1), Aroostook_31 (G1), Ashraf_16 (B1), Austelle_18 (B4), Avrafan_31 (G1), AzulaCat_31 (G1), BPs_31 (G1), BQuat_31 (G1), Badfish_17 (B1), Bae_18 (B5), Banjo_16 (B1), Barkley26_31 (G1), Basato_18 (B1), BatteryCK_16 (B1), Beaglebox_16 (B1), Bishoperium_16 (B1), BlackStallion_17 (B1), BlacksBerry_16 (B1), BloominB_36 (Q), BlueHusk_17 (B1), Bluephacebaby_16 (B1), BobbyK_17 (B4), Boehler_17 (B1), BoogieWoogie_16 (B1), Brilliant_17 (B1), BrownCNA_18 (B4), BruceB_31 (G1), Buckeye_17 (B1), Burr_16 (B1), CLED96_31 (G1), CamL_17 (B1), CampRoach_17 (B1), Camri_31 (G1), Cannibal_17 (B1), Carthage_16 (B1), Caspiroi_16 (B1), CassieYates_31 (G1), Cedasite_31 (G1), Chaelin_16 (B1), Chah_17 (B1), Chance64_31 (G1), Charles1_17 (B1), CharlieGBrown_16 (B1), CheetO_17 (B1), Cher_16 (B1), Cherrybomb426_31 (G1), Childish_16 (B1), Chipette_18 (B1), Chorkpop_17 (B1), ChrisnMich_16 (B4), Chuni_16 (B1), Chunky_17 (B1), Chute_16 (B1), Cobra_17 (B1), Colbert_17 (B1), Coleslaw_31 (G1), Coletti_17 (B1), Cooper_17 (B4), Cornbread_16 (B1), Cornobble_16 (B1), Cosmolli16_16 (B1), Craff_17 (B1), Crespo_31 (G1), Crownjwl_17 (B1), DMoney_31 (G1), DNAlll_0031 (G1), DaddyDaniels_17 (B1), Daegal_37 (Q), Daffy_17 (B1), Daka_17 (B1), Darionha_31 (G1), Dati_17 (B1), DeepSoil15_36 (Q), DelRivs_16 (B1), Derpp_16 (B1), Dewey_35 (Q), Dice_16 (B1), DigitDog_19 (B5), DingDing_31 (G1), Dingo_17 (B1), Dione_16 (B1), DirtJuice_17 (B1), Doddsville_17 (B1), DoesntMatter_17 (B1), DoIOn_18 (B1), DonSanchon_16 (B1), Donny_18 (B5), DuchessDung_16 (B1), Duggie_16 (B1), Durga_17 (B1), ECartman_31 (G1), EastView9101_18 (B5), Ein37_36 (Q), ElvisPhasley_17 (B1), Emiris_17 (B1), EmpTee_17 (B1), Epah_16 (B4), Eremos_17 (B1), Etaye_17 (B1), Eugenia_17 (B1), Evanesce_35 (Q), Fanaw_17 (B4), Fang_17 (B1), Flake_17 (B1), FleetyMac_16 (B1), FluffyNinja_17 (B1), Forge_35 (Q), Fortunato_17 (B4), Fozzie_16 (B1), Frankicide_17 (B1), Frederick_17 (B4), FremontTroll_17 (B1), Freya_16 (B1), FriarPreacher_17 (B1), Fringe_17 (B1), Frosty24_31 (G1), FugateOSU_16 (B1), Funsized_21 (B9), Gancho_35 (Q), Gareth_16 (B1), GeneCoco_17 (B1), Gideon_31 (G1), Giles_35 (Q), GinPorsche_16 (B4), Giraffe_17 (B1), GoldenAsh_31 (G1), Gomashi_31 (G1), Gophee_17 (B1), Grand2040_16 (B1), Gravallia_35 (Q),

GreenChile_17 (B1), Grizzly_31 (G1), Gwennie1_17 (B1), Gwilliam_17 (B1), Gyarad_0017 (B1), HH92_35 (Q), HSavage_17 (B1), Hadrien_36 (Q), Hail_35 (Q), Haimas_17 (B1), Haleema_16 (B1), Hally898_16 (B4), Halo_31 (G1), Hamish_17 (B1), Hangman_17 (B4), Happabalu_17 (B1), Hartsy_17 (B1), Harvey_17 (B1), Heath_17 (B4), Hekos_16 (B1), Held_17 (B1), HenryJackson_16 (B1), Hertubise_17 (B1), Hetaeria_17 (B1), HighStump_16 (B1), Hocus_16 (B1), HogWash_16 (B1), Hope_31 (G1), Horchata_17 (B1), Hotshotbaby7_31 (G1), Hydro_17 (B4), ImtiyazSitla_16 (B1), Inchworm_17 (B1), Indlovu_17 (B11), Inverness_17 (B1), Iridessa_17 (B1), Iridoclysis_17 (B1), IsaacEli_17 (B1), JAMaL_17 (B4), JDog_16 (B1), JacAttac_17 (B1), JaguarMi_18 (B4), JakeO_16 (B1), Jane_31 (G1), JangoPhett_17 (B1), Jeilious_31 (G), Jesabah_17 (B1), Jillium_16 (B1), Jiminy_16 (B1), Jiraiya_16 (B1), Jolene_31 (G1), Jonghyun_31 (G1), JorRay_31 (G1), JoyceMaria_17 (B4), KLucky39_17 (B1), Kahve_16 (B1), Kailash_17 (B1), Kareem_31 (G1), Karn_16 (B1), Kasen3_31 (G1), Katniss_17 (B1), Keitherie_17 (B1), Khan1_17 (B1), Kikipoo_17 (B1), Kimbrough_17 (B1), Kinbote_36 (Q), KingTut_16 (B1), KingVeVeVe_17 (B1), KlimbOn_17 (B1), Kloppinator_17 (B1), Knocker_21 (B9), Kwadwo_16 (B1), Kwksand96_16 (B1), Labeouficaum_16 (B1), Lambano_16 (B4), Larson_18 (B1), LasagnaCat_17 (B1), Lasso_17 (B1), LeeLot_17 (B1), Lego3393_17 (B1), Legolas_16 (B1), Lehmann_17 (B1), LeiMonet_17 (B1), LemonSlice_17 (B1), Liefie_31 (G1), LilHazelNut_36 (Q), LilMcDreamy_17 (B12), LittleDigger_16 (B4), Lolalove_17 (B4), Longacauda_16 (B1), LostAndPhound_16 (B1), LouisV14_31 (G1), LuckyMarjie_16 (B1), Luke_36 (Q), Lulumae_16 (B1), Lulwa_17 (B1), Lumine_16 (B1), Luna22_35 (Q), MRabcd_16 (B1), MZKinsey_31 (G1), Mag7_16 (B1), Magic8_17 (B1), Magpie_17 (B4), Maliketh_31 (G1), Mana_16 (B1), Manad_16 (B1), Marmie_31 (G1), Maru_16 (B1), Maskar_16 (B1), Matalotodo_17 (B1), Mcshane_16 (B1), Mecca_16 (B1), Megamind20_17 (B1), Megatron_17 (B1), Melc17_17 (B1), MelsMeow_16 (B1), Mesh1_17 (B1), Mesmerelda_16 (B1), MichaelPhcott_16 (B1), Mikota_17 (B1), MiniBoss_17 (B1), MitKao_17 (B1), Mithril_17 (B4), Morgushi_17 (B1), Morty_17 (B1), Mosaic_16 (B1), Mowgli_31 (G1), MrPhizzler_17 (B1), Mudslide_17 (B4), Mulan_16 (B1), Murdoc_17 (B1), Mutante_16 (B1), Mysterious_18 (B5), Nacho_0017 (B1), Nanao_16 (B4), Nangang_18 (B5), Nathan_17 (B1), Neoh_31 (G), Newman_17 (B1), Nicole21_17 (B1), Nigel_15 (B4), Nova1_16 (B1), Numberten_17 (B1), Nyala_16 (B1), OBUpride_36 (Q), OSmaximus_17 (B1), OctaviousRex_31 (G1), Olak_16 (B1), Olga_31 (G1), Oline_16 (B1), Olive_17 (B1), OliverWalter_17 (B1), Omniscient_17 (B1), OneBrain_17 (B1), Oosterbaan_17 (B1), Orfeu_16 (B1), Orion_17 (B1), Orwigg_16 (B1), PG1_17 (B1), Pacifista_16 (B1), PallasAthena_17 (B1), Peeb_31 (G1), PenguinLover67_20 (B9), Periodt_31 (G1), Phamished_17 (B1), Phareon_17 (B1), PhatCats2014_17 (B1), PhatLouie_17 (B1), Phelemich_18 (B5), PhenghisKhan_16 (B1), Pherdinand_17 (B1), Phergie_16 (B1), Phipps_17 (B1), Phish_31 (G1), Phleuron_16 (B1), Phloodle_31 (G1), PhrankReynolds_16 (B1), Phreak_31 (G1), PhrodoBaggins_16 (B1), Phunky_17 (B1), Piglet_0016 (B1), PinheadLarry_17 (B1), PinkYoshi_31 (G1), Pinkman_16 (B1), Pipsqueak_17 (B1), Placalicious_16 (B1), Plagueis_31 (G1), Plata_16 (B1), Plmatters_17 (B1), Podrick_17 (B1), Pops_17 (B1), Poster_16 (B4), Potter_16 (B1), Prickles_17 (B1), Prince_17 (B4), ProfessorX_17 (B1), Puhltonio_17 (B1), QueenBeane_17 (B1), QueenPie_17 (B4), Quisquilliae_17 (B1), Rabbs_31 (G1), Rattrick_31 (G1), RawrgerThat_17 (B4), Reccee_18 (B5), RedMaple_16 (B1), RedRaider89_18 (B1), Remy19_31 (G1), Renaissance_31 (G1), Renkei_16 (B4), Reprobate_18 (B5), Rich_18 (B5), Richarlison_31 (G1), Ricotta_16 (B1), Riggan_17 (B1), Rimu_17 (B1), Rinkes_21 (B9), Riverton_17 (B1), Robyn_16 (B1), Roliet_17 (B1), Roscoe_18 (B1), Roy17_17 (B1), Ruriko_32 (G1), SDcharge11_17 (B1), Saguaro_19 (B7), SallyH_17 (B1), Samaymay_17 (B1), SassyCat97_16 (B1), Schadenfreude_16 (B1),

Schiebel_31 (G1), Schueller_16 (B1), Scoot17C_17 (B1), Scrick_16 (B1), Selr12_17 (B1), Serendipitous_18 (B5), Serendipity_17 (B1), Serpentine_0017 (B1), ShaboiShabazz_31 (G1), ShadowBud_17 (B1), Sheila_17 (B1), Shenyu_18 (B5), ShiVal_17 (B1), Sigman_17 (B1), SilverBell_17 (B1), Simielle_16 (B1), SirBeauregard_16 (B1), Sizemore_31 (G1), Skippy_17 (B1), Slatt_17 (B1), Sneeze_31 (G1), Soile_17 (B1), Solosis_16 (B1), Sophia_16 (B1), Soto_17 (B1), Spartan300_17 (B1), Squid_17 (B1), Squiggle_17 (B1), Stargaze_31 (G5), Stinger_15 (B4), Struggle_16 (B1), Suffolk_17 (B1), Suigeneris_18 (B5), Surely_17 (B1), Sweets_31 (G1), Swiphy_17 (B1), Swish_17 (B1), Taheera_31 (G1), TallGrassMM_17 (B1), Telesworld_16 (B1), Terror_31 (G1), Thora_17 (B1), ThreeOh3D2_17 (B1), Thunderbird_16 (B1), Timmi_16 (B1), TinaBug_31 (G1), TomBombadil_17 (B1), TomBrady_31 (G1), Tomlarah_17 (B1), Toni_16 (B1), TooFast2Furius_18 (B1), Tooj_17 (B1), Triad_17 (B1), True_16 (B1), Trypo_17 (B1), TyrionL_16 (B1), UAch1_17 (B1), Ubuntu_36 (Q), UncleHowie_17 (B1), Usavi_17 (B1), Vaishali24_16 (B1), Valjean_17 (B1), Vaticameos_17 (B1), Veritas_16 (B1), Vincenzo_18 (B4), VioletZ_17 (B4), Virapocalypse_17 (B1), Virgeve_16 (B1), Vista_17 (B1), Vivaldi_17 (B1), Vortex_17 (B1), Waleliano_17 (B4), Wallhey_16 (B1), Waterdiva_17 (B1), Webster2_36 (Q), Weher20_17 (B1), Wendigo_32 (G1), Windsor_16 (B1), Wishmaker_35 (Q), Xavier_16 (B1), Xincheng_17 (B4), Yoshand_17 (B1), YouGoGlencoco_17 (B1), Zaider_18 (B1), Zelda_17 (B1), Zemanar_18 (B4), ZoMa_31 (G1), Zombi_31 (G1), Zonia_17 (B1),

Start 10:

- Found in 2 of 498 (0.4%) of genes in pham
- Manual Annotations of this start: 1 of 436
- Called 50.0% of time when present
- Phage (with cluster) where this start called: JacoRen57_28 (AB),

Start 11:

- Found in 347 of 498 (69.7%) of genes in pham
- Manual Annotations of this start: 1 of 436
- Called 2.6% of time when present
- Phage (with cluster) where this start called: Cloudyecho_31 (G3), KarasumaRum_20 (B5), Lopsy_16 (B1), Nehemiah_17 (B5), NiaNia_17 (B1), Rita130_18 (B5), SirJeffery_18 (B5), StinkyVeggy_20 (B5), Taraxa_17 (B1),

Start 15:

- Found in 3 of 498 (0.6%) of genes in pham
- Manual Annotations of this start: 3 of 436
- Called 100.0% of time when present
- Phage (with cluster) where this start called: Aikoy_49 (AE), Leopard_49 (AE), Onyinye_50 (AE),

Start 40:

- Found in 1 of 498 (0.2%) of genes in pham
- No Manual Annotations of this start.
- Called 100.0% of time when present
- Phage (with cluster) where this start called: Weirdo19_32 (AH),

Summary by clusters:

There are 18 clusters represented in this pham: Q, G5, AB, G3, G2, G1, AH, G, B4, B5, B7, B12, B1, B11, AE, B8, B9, G4,

Info for manual annotations of cluster AB:

- Start number 10 was manually annotated 1 time for cluster AB.

Info for manual annotations of cluster AE:

- Start number 15 was manually annotated 3 times for cluster AE.

Info for manual annotations of cluster B1:

- Start number 9 was manually annotated 287 times for cluster B1.
- Start number 11 was manually annotated 1 time for cluster B1.

Info for manual annotations of cluster B11:

- Start number 9 was manually annotated 1 time for cluster B11.

Info for manual annotations of cluster B12:

- Start number 9 was manually annotated 1 time for cluster B12.

Info for manual annotations of cluster B4:

- Start number 9 was manually annotated 28 times for cluster B4.

Info for manual annotations of cluster B5:

- Start number 9 was manually annotated 11 times for cluster B5.

Info for manual annotations of cluster B7:

- Start number 9 was manually annotated 1 time for cluster B7.

Info for manual annotations of cluster B8:

- Start number 8 was manually annotated 1 time for cluster B8.

Info for manual annotations of cluster B9:

- Start number 9 was manually annotated 4 times for cluster B9.

Info for manual annotations of cluster G1:

- Start number 8 was manually annotated 1 time for cluster G1.
- Start number 9 was manually annotated 64 times for cluster G1.

Info for manual annotations of cluster G2:

- Start number 8 was manually annotated 3 times for cluster G2.

Info for manual annotations of cluster G3:

- Start number 8 was manually annotated 2 times for cluster G3.

Info for manual annotations of cluster G4:

- Start number 8 was manually annotated 2 times for cluster G4.

Info for manual annotations of cluster G5:

- Start number 8 was manually annotated 1 time for cluster G5.
- Start number 9 was manually annotated 1 time for cluster G5.

Info for manual annotations of cluster Q:

- Start number 7 was manually annotated 1 time for cluster Q.

- Start number 9 was manually annotated 22 times for cluster Q.

Gene Information:

Gene: ABU_17 Start: 13989, Stop: 14603, Start Num: 9

Candidate Starts for ABU_17:

(Start: 9 @13989 has 420 MA's), (Start: 11 @13998 has 1 MA's), (19, 14031), (44, 14133), (76, 14280), (88, 14361), (92, 14370), (101, 14415), (126, 14595),

Gene: AbsoluteMadLad_16 Start: 13993, Stop: 14607, Start Num: 9

Candidate Starts for AbsoluteMadLad_16:

(Start: 9 @13993 has 420 MA's), (Start: 11 @14002 has 1 MA's), (19, 14035), (44, 14137), (76, 14284), (92, 14374), (101, 14419), (122, 14563), (126, 14599),

Gene: Acadian_18 Start: 15598, Stop: 16197, Start Num: 9

Candidate Starts for Acadian_18:

(Start: 9 @15598 has 420 MA's), (Start: 11 @15607 has 1 MA's), (16, 15628), (22, 15649), (27, 15667), (29, 15673), (48, 15760), (52, 15778), (55, 15790), (58, 15802), (59, 15805), (85, 15952), (94, 15985), (107, 16066), (122, 16168), (124, 16189),

Gene: Adriana_17 Start: 13991, Stop: 14605, Start Num: 9

Candidate Starts for Adriana_17:

(Start: 9 @13991 has 420 MA's), (Start: 11 @14000 has 1 MA's), (19, 14033), (44, 14135), (76, 14282), (88, 14363), (92, 14372), (101, 14417), (126, 14597),

Gene: Aelin_16 Start: 13556, Stop: 14170, Start Num: 9

Candidate Starts for Aelin_16:

(Start: 9 @13556 has 420 MA's), (Start: 11 @13565 has 1 MA's), (19, 13598), (44, 13700), (76, 13847), (92, 13937), (101, 13982), (122, 14126), (126, 14162),

Gene: Ahwei_16 Start: 14678, Stop: 15289, Start Num: 9

Candidate Starts for Ahwei_16:

(Start: 9 @14678 has 420 MA's), (18, 14717), (23, 14732), (33, 14768), (48, 14840), (52, 14858), (58, 14882), (59, 14885), (71, 14936), (92, 15059), (102, 15110), (107, 15146), (108, 15155), (123, 15269),

Gene: Aikoy_49 Start: 37935, Stop: 38507, Start Num: 15

Candidate Starts for Aikoy_49:

(Start: 15 @37935 has 3 MA's), (28, 37983), (39, 38040), (51, 38088), (52, 38091), (55, 38103), (58, 38115), (60, 38121), (61, 38133), (76, 38202), (85, 38265), (93, 38295), (95, 38301), (96, 38307),

Gene: AizenPogi_31 Start: 27107, Stop: 27724, Start Num: 9

Candidate Starts for AizenPogi_31:

(Start: 9 @27107 has 420 MA's), (22, 27155), (31, 27188), (34, 27197), (42, 27248), (49, 27281), (51, 27290), (54, 27302), (57, 27311), (74, 27413), (78, 27428), (82, 27470), (97, 27533),

Gene: AlanGrant_18 Start: 16515, Stop: 17126, Start Num: 9

Candidate Starts for AlanGrant_18:

(Start: 9 @16515 has 420 MA's), (22, 16566), (24, 16575), (33, 16605), (44, 16659), (52, 16695), (58, 16719), (71, 16773), (102, 16947), (107, 16983), (108, 16992),

Gene: Aleia_17 Start: 13570, Stop: 14184, Start Num: 9

Candidate Starts for Aleia_17:

(Start: 9 @13570 has 420 MA's), (Start: 11 @13579 has 1 MA's), (19, 13612), (44, 13714), (76, 13861), (88, 13942), (92, 13951), (101, 13996), (126, 14176),

Gene: AltPhacts_17 Start: 13986, Stop: 14600, Start Num: 9

Candidate Starts for AltPhacts_17:

(Start: 9 @13986 has 420 MA's), (Start: 11 @13995 has 1 MA's), (19, 14028), (44, 14130), (76, 14277), (88, 14358), (92, 14367), (101, 14412), (122, 14556), (126, 14592),

Gene: Altwerkus_16 Start: 13686, Stop: 14300, Start Num: 9

Candidate Starts for Altwerkus_16:

(Start: 9 @13686 has 420 MA's), (Start: 11 @13695 has 1 MA's), (19, 13728), (44, 13830), (76, 13977), (92, 14067), (101, 14112), (122, 14256), (126, 14292),

Gene: Amochick_36 Start: 30335, Stop: 30955, Start Num: 9

Candidate Starts for Amochick_36:

(5, 30284), (Start: 9 @30335 has 420 MA's), (21, 30383), (29, 30410), (36, 30437), (38, 30455), (51, 30521), (69, 30611), (74, 30644), (85, 30719), (89, 30737), (96, 30761), (99, 30782), (101, 30791), (106, 30827), (107, 30833), (118, 30911),

Gene: Amymech_36 Start: 30329, Stop: 30949, Start Num: 9

Candidate Starts for Amymech_36:

(5, 30278), (Start: 9 @30329 has 420 MA's), (21, 30377), (36, 30431), (38, 30449), (51, 30515), (69, 30605), (74, 30638), (85, 30713), (89, 30731), (96, 30755), (99, 30776), (101, 30785), (106, 30821), (107, 30827), (118, 30905),

Gene: Anderson_17 Start: 13982, Stop: 14596, Start Num: 9

Candidate Starts for Anderson_17:

(Start: 9 @13982 has 420 MA's), (Start: 11 @13991 has 1 MA's), (19, 14024), (44, 14126), (76, 14273), (92, 14363), (101, 14408), (122, 14552), (126, 14588),

Gene: Andre_17 Start: 13980, Stop: 14594, Start Num: 9

Candidate Starts for Andre_17:

(Start: 9 @13980 has 420 MA's), (Start: 11 @13989 has 1 MA's), (19, 14022), (44, 14124), (76, 14271), (88, 14352), (92, 14361), (101, 14406), (122, 14550), (126, 14586),

Gene: Angel_31 Start: 27107, Stop: 27724, Start Num: 9

Candidate Starts for Angel_31:

(Start: 9 @27107 has 420 MA's), (22, 27155), (31, 27188), (34, 27197), (38, 27224), (42, 27248), (49, 27281), (51, 27290), (54, 27302), (57, 27311), (74, 27413), (78, 27428), (82, 27470), (97, 27533), (111, 27635),

Gene: AngelCake_17 Start: 13994, Stop: 14608, Start Num: 9

Candidate Starts for AngelCake_17:

(Start: 9 @13994 has 420 MA's), (Start: 11 @14003 has 1 MA's), (19, 14036), (44, 14138), (76, 14285), (92, 14375), (101, 14420), (122, 14564), (126, 14600),

Gene: Annihilator_31 Start: 27098, Stop: 27715, Start Num: 9

Candidate Starts for Annihilator_31:

(Start: 9 @27098 has 420 MA's), (22, 27146), (31, 27179), (34, 27188), (38, 27215), (42, 27239), (49, 27272), (51, 27281), (54, 27293), (57, 27302), (74, 27404), (78, 27419), (82, 27461), (97, 27524), (111, 27626),

Gene: Antihero_16 Start: 14678, Stop: 15289, Start Num: 9

Candidate Starts for Antihero_16:

(Start: 9 @14678 has 420 MA's), (18, 14717), (23, 14732), (33, 14768), (48, 14840), (52, 14858), (58, 14882), (59, 14885), (71, 14936), (92, 15059), (102, 15110), (107, 15146), (108, 15155), (123, 15269),

Gene: Antonia_16 Start: 13556, Stop: 14170, Start Num: 9

Candidate Starts for Antonia_16:

(Start: 9 @13556 has 420 MA's), (Start: 11 @13565 has 1 MA's), (19, 13598), (44, 13700), (76, 13847), (92, 13937), (101, 13982), (122, 14126), (126, 14162),

Gene: Antsirabe_31 Start: 28830, Stop: 29489, Start Num: 8

Candidate Starts for Antsirabe_31:

(4, 28740), (Start: 8 @28830 has 10 MA's), (22, 28881), (53, 29028), (99, 29304), (107, 29355), (108, 29364),

Gene: Aonishiki_17 Start: 14012, Stop: 14626, Start Num: 9

Candidate Starts for Aonishiki_17:

(Start: 9 @14012 has 420 MA's), (Start: 11 @14021 has 1 MA's), (19, 14054), (44, 14156), (76, 14303), (88, 14384), (92, 14393), (101, 14438), (122, 14582), (126, 14618),

Gene: Apex_17 Start: 15923, Stop: 16534, Start Num: 9

Candidate Starts for Apex_17:

(Start: 9 @15923 has 420 MA's), (18, 15962), (23, 15977), (29, 15998), (33, 16013), (44, 16067), (48, 16085), (52, 16103), (58, 16127), (59, 16130), (92, 16304), (102, 16355), (107, 16391), (122, 16493), (123, 16514),

Gene: Apizium_16 Start: 13726, Stop: 14340, Start Num: 9

Candidate Starts for Apizium_16:

(Start: 9 @13726 has 420 MA's), (Start: 11 @13735 has 1 MA's), (19, 13768), (44, 13870), (76, 14017), (88, 14098), (92, 14107), (101, 14152), (126, 14332),

Gene: Aroostook_31 Start: 27107, Stop: 27724, Start Num: 9

Candidate Starts for Aroostook_31:

(Start: 9 @27107 has 420 MA's), (22, 27155), (31, 27188), (34, 27197), (42, 27248), (49, 27281), (51, 27290), (54, 27302), (57, 27311), (74, 27413), (78, 27428), (82, 27470), (97, 27533),

Gene: Ashraf_16 Start: 13544, Stop: 14158, Start Num: 9

Candidate Starts for Ashraf_16:

(Start: 9 @13544 has 420 MA's), (Start: 11 @13553 has 1 MA's), (19, 13586), (44, 13688), (76, 13835), (92, 13925), (101, 13970), (122, 14114), (126, 14150),

Gene: Austelle_18 Start: 16379, Stop: 16990, Start Num: 9

Candidate Starts for Austelle_18:

(Start: 9 @16379 has 420 MA's), (18, 16418), (23, 16433), (29, 16454), (33, 16469), (44, 16523), (48, 16541), (52, 16559), (58, 16583), (59, 16586), (71, 16637), (92, 16760), (102, 16811), (107, 16847), (108, 16856), (122, 16949), (123, 16970),

Gene: Avocado_30 Start: 28826, Stop: 29482, Start Num: 8

Candidate Starts for Avocado_30:

(Start: 8 @28826 has 10 MA's), (Start: 11 @28835 has 1 MA's), (18, 28865), (22, 28877), (31, 28910), (49, 29003), (51, 29012), (59, 29042), (106, 29342), (120, 29444),

Gene: Avrafan_31 Start: 27107, Stop: 27724, Start Num: 9

Candidate Starts for Avrafan_31:

(Start: 9 @27107 has 420 MA's), (22, 27155), (31, 27188), (34, 27197), (38, 27224), (42, 27248), (49, 27281), (51, 27290), (54, 27302), (57, 27311), (74, 27413), (78, 27428), (82, 27470), (97, 27533), (111, 27635),

Gene: AzulaCat_31 Start: 27107, Stop: 27724, Start Num: 9

Candidate Starts for AzulaCat_31:

(Start: 9 @27107 has 420 MA's), (22, 27155), (31, 27188), (34, 27197), (38, 27224), (42, 27248), (49, 27281), (51, 27290), (54, 27302), (57, 27311), (74, 27413), (78, 27428), (82, 27470), (97, 27533), (111, 27635),

Gene: BPs_31 Start: 27107, Stop: 27724, Start Num: 9

Candidate Starts for BPs_31:

(Start: 9 @27107 has 420 MA's), (22, 27155), (31, 27188), (34, 27197), (38, 27224), (42, 27248), (49, 27281), (51, 27290), (54, 27302), (57, 27311), (74, 27413), (78, 27428), (82, 27470), (97, 27533), (111, 27635),

Gene: BQuat_31 Start: 27098, Stop: 27715, Start Num: 9

Candidate Starts for BQuat_31:

(Start: 9 @27098 has 420 MA's), (22, 27146), (31, 27179), (34, 27188), (38, 27215), (42, 27239), (49, 27272), (51, 27281), (54, 27293), (57, 27302), (74, 27404), (78, 27419), (82, 27461), (97, 27524), (111, 27626),

Gene: Badfish_17 Start: 14015, Stop: 14629, Start Num: 9

Candidate Starts for Badfish_17:

(Start: 9 @14015 has 420 MA's), (Start: 11 @14024 has 1 MA's), (19, 14057), (44, 14159), (76, 14306), (88, 14387), (92, 14396), (101, 14441), (122, 14585), (126, 14621),

Gene: Bae_18 Start: 15744, Stop: 16343, Start Num: 9

Candidate Starts for Bae_18:

(Start: 9 @15744 has 420 MA's), (Start: 11 @15753 has 1 MA's), (16, 15774), (21, 15792), (23, 15798), (24, 15804), (27, 15813), (35, 15843), (48, 15906), (55, 15936), (58, 15948), (59, 15951), (76, 16035), (85, 16098), (107, 16212), (124, 16335),

Gene: Banjo_16 Start: 13693, Stop: 14307, Start Num: 9

Candidate Starts for Banjo_16:

(Start: 9 @13693 has 420 MA's), (Start: 11 @13702 has 1 MA's), (19, 13735), (44, 13837), (76, 13984), (92, 14074), (101, 14119), (122, 14263), (126, 14299),

Gene: Barkley26_31 Start: 27129, Stop: 27746, Start Num: 9

Candidate Starts for Barkley26_31:

(Start: 9 @27129 has 420 MA's), (22, 27177), (31, 27210), (34, 27219), (38, 27246), (42, 27270), (49, 27303), (51, 27312), (54, 27324), (57, 27333), (74, 27435), (78, 27450), (82, 27492), (97, 27555), (111, 27657),

Gene: Basato_18 Start: 14219, Stop: 14833, Start Num: 9

Candidate Starts for Basato_18:

(Start: 9 @14219 has 420 MA's), (Start: 11 @14228 has 1 MA's), (19, 14261), (44, 14363), (76, 14510), (88, 14591), (92, 14600), (101, 14645), (122, 14789), (126, 14825),

Gene: BatteryCK_16 Start: 13550, Stop: 14164, Start Num: 9

Candidate Starts for BatteryCK_16:

(Start: 9 @13550 has 420 MA's), (Start: 11 @13559 has 1 MA's), (19, 13592), (44, 13694), (76, 13841), (92, 13931), (101, 13976), (122, 14120), (126, 14156),

Gene: Beaglebox_16 Start: 13710, Stop: 14324, Start Num: 9

Candidate Starts for Beaglebox_16:

(Start: 9 @13710 has 420 MA's), (Start: 11 @13719 has 1 MA's), (19, 13752), (44, 13854), (76, 14001), (92, 14091), (101, 14136), (122, 14280), (126, 14316),

Gene: Bishoperium_16 Start: 13699, Stop: 14313, Start Num: 9

Candidate Starts for Bishoperium_16:

(Start: 9 @13699 has 420 MA's), (Start: 11 @13708 has 1 MA's), (19, 13741), (44, 13843), (76, 13990), (92, 14080), (101, 14125), (122, 14269), (126, 14305),

Gene: BlackStallion_17 Start: 14001, Stop: 14615, Start Num: 9

Candidate Starts for BlackStallion_17:

(Start: 9 @14001 has 420 MA's), (Start: 11 @14010 has 1 MA's), (19, 14043), (44, 14145), (76, 14292), (92, 14382), (101, 14427), (122, 14571), (126, 14607),

Gene: BlacksBerry_16 Start: 13704, Stop: 14318, Start Num: 9

Candidate Starts for BlacksBerry_16:

(Start: 9 @13704 has 420 MA's), (Start: 11 @13713 has 1 MA's), (19, 13746), (44, 13848), (76, 13995), (92, 14085), (101, 14130), (122, 14274), (126, 14310),

Gene: BloominB_36 Start: 30329, Stop: 30949, Start Num: 9

Candidate Starts for BloominB_36:

(5, 30278), (Start: 9 @30329 has 420 MA's), (21, 30377), (36, 30431), (38, 30449), (51, 30515), (69, 30605), (74, 30638), (85, 30713), (89, 30731), (96, 30755), (99, 30776), (101, 30785), (106, 30821), (107, 30827), (118, 30905),

Gene: BlueHusk_17 Start: 13982, Stop: 14596, Start Num: 9

Candidate Starts for BlueHusk_17:

(Start: 9 @13982 has 420 MA's), (Start: 11 @13991 has 1 MA's), (19, 14024), (44, 14126), (76, 14273), (92, 14363), (101, 14408), (122, 14552), (126, 14588),

Gene: Bluephacebaby_16 Start: 13699, Stop: 14313, Start Num: 9

Candidate Starts for Bluephacebaby_16:

(Start: 9 @13699 has 420 MA's), (Start: 11 @13708 has 1 MA's), (19, 13741), (44, 13843), (76, 13990), (92, 14080), (101, 14125), (122, 14269), (126, 14305),

Gene: BobbyK_17 Start: 15742, Stop: 16353, Start Num: 9

Candidate Starts for BobbyK_17:

(Start: 9 @15742 has 420 MA's), (18, 15781), (23, 15796), (29, 15817), (33, 15832), (44, 15886), (48, 15904), (52, 15922), (58, 15946), (59, 15949), (92, 16123), (102, 16174), (123, 16333),

Gene: Boehler_17 Start: 14009, Stop: 14623, Start Num: 9

Candidate Starts for Boehler_17:

(Start: 9 @14009 has 420 MA's), (Start: 11 @14018 has 1 MA's), (19, 14051), (44, 14153), (76, 14300), (92, 14390), (101, 14435), (122, 14579), (126, 14615),

Gene: BoogieWoogie_16 Start: 13686, Stop: 14300, Start Num: 9

Candidate Starts for BoogieWoogie_16:

(Start: 9 @13686 has 420 MA's), (Start: 11 @13695 has 1 MA's), (19, 13728), (44, 13830), (76, 13977), (92, 14067), (101, 14112), (122, 14256), (126, 14292),

Gene: Brilliant_17 Start: 13703, Stop: 14317, Start Num: 9

Candidate Starts for Brilliant_17:

(Start: 9 @13703 has 420 MA's), (Start: 11 @13712 has 1 MA's), (19, 13745), (44, 13847), (76, 13994), (92, 14084), (101, 14129), (122, 14273), (126, 14309),

Gene: BrownCNA_18 Start: 15996, Stop: 16607, Start Num: 9

Candidate Starts for BrownCNA_18:

(Start: 9 @15996 has 420 MA's), (18, 16035), (23, 16050), (33, 16086), (44, 16140), (48, 16158), (52, 16176), (58, 16200), (71, 16254), (92, 16377), (102, 16428), (107, 16464), (123, 16587),

Gene: BruceB_31 Start: 27107, Stop: 27724, Start Num: 9

Candidate Starts for BruceB_31:

(Start: 9 @27107 has 420 MA's), (22, 27155), (31, 27188), (34, 27197), (38, 27224), (42, 27248), (49, 27281), (51, 27290), (54, 27302), (57, 27311), (74, 27413), (78, 27428), (82, 27470), (97, 27533), (111, 27635),

Gene: Buckeye_17 Start: 14017, Stop: 14631, Start Num: 9

Candidate Starts for Buckeye_17:

(Start: 9 @14017 has 420 MA's), (Start: 11 @14026 has 1 MA's), (19, 14059), (44, 14161), (76, 14308), (88, 14389), (92, 14398), (101, 14443), (122, 14587), (126, 14623),

Gene: Burr_16 Start: 13699, Stop: 14313, Start Num: 9

Candidate Starts for Burr_16:

(Start: 9 @13699 has 420 MA's), (Start: 11 @13708 has 1 MA's), (19, 13741), (44, 13843), (76, 13990), (88, 14071), (92, 14080), (101, 14125), (122, 14269), (126, 14305),

Gene: CLED96_31 Start: 27107, Stop: 27724, Start Num: 9

Candidate Starts for CLED96_31:

(Start: 9 @27107 has 420 MA's), (22, 27155), (31, 27188), (34, 27197), (38, 27224), (42, 27248), (49, 27281), (51, 27290), (54, 27302), (57, 27311), (74, 27413), (78, 27428), (82, 27470), (97, 27533), (111, 27635),

Gene: CamL_17 Start: 13997, Stop: 14611, Start Num: 9

Candidate Starts for CamL_17:

(Start: 9 @13997 has 420 MA's), (Start: 11 @14006 has 1 MA's), (19, 14039), (44, 14141), (76, 14288), (92, 14378), (101, 14423), (122, 14567), (126, 14603),

Gene: Cambiare_31 Start: 29294, Stop: 29950, Start Num: 8

Candidate Starts for Cambiare_31:

(Start: 8 @29294 has 10 MA's), (Start: 11 @29303 has 1 MA's), (18, 29333), (22, 29345), (31, 29378), (49, 29471), (51, 29480), (59, 29510), (106, 29810), (110, 29840),

Gene: CampRoach_17 Start: 13988, Stop: 14602, Start Num: 9

Candidate Starts for CampRoach_17:

(Start: 9 @13988 has 420 MA's), (Start: 11 @13997 has 1 MA's), (19, 14030), (44, 14132), (76, 14279), (88, 14360), (92, 14369), (101, 14414), (122, 14558), (126, 14594),

Gene: Camri_31 Start: 27107, Stop: 27724, Start Num: 9

Candidate Starts for Camri_31:

(Start: 9 @27107 has 420 MA's), (22, 27155), (31, 27188), (34, 27197), (38, 27224), (42, 27248), (49, 27281), (51, 27290), (54, 27302), (57, 27311), (74, 27413), (78, 27428), (82, 27470), (97, 27533), (111, 27635),

Gene: Cannibal_17 Start: 13982, Stop: 14596, Start Num: 9

Candidate Starts for Cannibal_17:

(Start: 9 @13982 has 420 MA's), (Start: 11 @13991 has 1 MA's), (19, 14024), (44, 14126), (76, 14273), (92, 14363), (101, 14408), (122, 14552), (126, 14588),

Gene: Carthage_16 Start: 13660, Stop: 14274, Start Num: 9

Candidate Starts for Carthage_16:

(Start: 9 @13660 has 420 MA's), (Start: 11 @13669 has 1 MA's), (19, 13702), (44, 13804), (76, 13951), (88, 14032), (92, 14041), (101, 14086), (122, 14230), (126, 14266),

Gene: Caspiboi_16 Start: 13704, Stop: 14318, Start Num: 9

Candidate Starts for Caspiboi_16:

(Start: 9 @13704 has 420 MA's), (Start: 11 @13713 has 1 MA's), (19, 13746), (44, 13848), (76, 13995), (92, 14085), (101, 14130), (126, 14310),

Gene: CassieYates_31 Start: 27107, Stop: 27724, Start Num: 9

Candidate Starts for CassieYates_31:

(Start: 9 @27107 has 420 MA's), (22, 27155), (31, 27188), (34, 27197), (38, 27224), (42, 27248), (49, 27281), (51, 27290), (54, 27302), (57, 27311), (74, 27413), (78, 27428), (82, 27470), (97, 27533), (111, 27635),

Gene: Cedasite_31 Start: 27107, Stop: 27724, Start Num: 9

Candidate Starts for Cedasite_31:

(Start: 9 @27107 has 420 MA's), (22, 27155), (31, 27188), (34, 27197), (38, 27224), (42, 27248), (49, 27281), (51, 27290), (54, 27302), (57, 27311), (74, 27413), (78, 27428), (82, 27470), (97, 27533), (111, 27635),

Gene: Chaelin_16 Start: 13664, Stop: 14278, Start Num: 9

Candidate Starts for Chaelin_16:

(Start: 9 @13664 has 420 MA's), (Start: 11 @13673 has 1 MA's), (19, 13706), (44, 13808), (76, 13955), (92, 14045), (101, 14090), (122, 14234), (126, 14270),

Gene: Chah_17 Start: 14016, Stop: 14630, Start Num: 9

Candidate Starts for Chah_17:

(Start: 9 @14016 has 420 MA's), (Start: 11 @14025 has 1 MA's), (19, 14058), (44, 14160), (76, 14307), (92, 14397), (101, 14442), (122, 14586), (126, 14622),

Gene: Chance64_31 Start: 27107, Stop: 27724, Start Num: 9

Candidate Starts for Chance64_31:

(Start: 9 @27107 has 420 MA's), (22, 27155), (31, 27188), (34, 27197), (42, 27248), (49, 27281), (51, 27290), (54, 27302), (57, 27311), (74, 27413), (78, 27428), (82, 27470), (97, 27533),

Gene: Charles1_17 Start: 13979, Stop: 14593, Start Num: 9

Candidate Starts for Charles1_17:

(Start: 9 @13979 has 420 MA's), (Start: 11 @13988 has 1 MA's), (19, 14021), (44, 14123), (76, 14270), (88, 14351), (92, 14360), (101, 14405), (122, 14549), (126, 14585),

Gene: CharlieGBrown_16 Start: 13568, Stop: 14182, Start Num: 9

Candidate Starts for CharlieGBrown_16:

(Start: 9 @13568 has 420 MA's), (Start: 11 @13577 has 1 MA's), (19, 13610), (44, 13712), (76, 13859), (92, 13949), (101, 13994), (122, 14138), (126, 14174),

Gene: CheetO_17 Start: 13997, Stop: 14611, Start Num: 9

Candidate Starts for CheetO_17:

(Start: 9 @13997 has 420 MA's), (Start: 11 @14006 has 1 MA's), (19, 14039), (44, 14141), (76, 14288), (92, 14378), (101, 14423), (122, 14567), (126, 14603),

Gene: Cher_16 Start: 13722, Stop: 14336, Start Num: 9

Candidate Starts for Cher_16:

(Start: 9 @13722 has 420 MA's), (Start: 11 @13731 has 1 MA's), (19, 13764), (44, 13866), (76, 14013), (92, 14103), (101, 14148), (122, 14292), (126, 14328),

Gene: Cherrybomb426_31 Start: 27107, Stop: 27724, Start Num: 9

Candidate Starts for Cherrybomb426_31:

(Start: 9 @27107 has 420 MA's), (22, 27155), (31, 27188), (34, 27197), (38, 27224), (42, 27248), (49, 27281), (51, 27290), (54, 27302), (57, 27311), (74, 27413), (82, 27470), (97, 27533), (111, 27635),

Gene: Childish_16 Start: 13710, Stop: 14324, Start Num: 9

Candidate Starts for Childish_16:

(Start: 9 @13710 has 420 MA's), (Start: 11 @13719 has 1 MA's), (19, 13752), (44, 13854), (76, 14001), (92, 14091), (101, 14136), (122, 14280), (126, 14316),

Gene: Chipette_18 Start: 14220, Stop: 14834, Start Num: 9

Candidate Starts for Chipette_18:

(Start: 9 @14220 has 420 MA's), (Start: 11 @14229 has 1 MA's), (19, 14262), (44, 14364), (76, 14511), (92, 14601), (101, 14646), (122, 14790), (126, 14826),

Gene: Chorkpop_17 Start: 13722, Stop: 14336, Start Num: 9

Candidate Starts for Chorkpop_17:

(Start: 9 @13722 has 420 MA's), (Start: 11 @13731 has 1 MA's), (19, 13764), (44, 13866), (76, 14013), (92, 14103), (101, 14148), (122, 14292), (126, 14328),

Gene: ChrisnMich_16 Start: 14678, Stop: 15289, Start Num: 9

Candidate Starts for ChrisnMich_16:

(Start: 9 @14678 has 420 MA's), (18, 14717), (23, 14732), (33, 14768), (48, 14840), (52, 14858), (58, 14882), (59, 14885), (71, 14936), (92, 15059), (102, 15110), (107, 15146), (108, 15155), (123, 15269),

Gene: Chuni_16 Start: 14013, Stop: 14627, Start Num: 9

Candidate Starts for Chuni_16:

(Start: 9 @14013 has 420 MA's), (Start: 11 @14022 has 1 MA's), (19, 14055), (44, 14157), (76, 14304), (92, 14394), (101, 14439), (122, 14583), (126, 14619),

Gene: Chunky_17 Start: 14009, Stop: 14623, Start Num: 9

Candidate Starts for Chunky_17:

(Start: 9 @14009 has 420 MA's), (Start: 11 @14018 has 1 MA's), (19, 14051), (44, 14153), (76, 14300), (88, 14381), (92, 14390), (101, 14435), (122, 14579), (126, 14615),

Gene: Chute_16 Start: 14012, Stop: 14626, Start Num: 9

Candidate Starts for Chute_16:

(Start: 9 @14012 has 420 MA's), (Start: 11 @14021 has 1 MA's), (19, 14054), (44, 14156), (76, 14303), (92, 14393), (101, 14438), (122, 14582), (126, 14618),

Gene: Cloudyecho_31 Start: 29040, Stop: 29687, Start Num: 11

Candidate Starts for Cloudyecho_31:

(Start: 8 @29028 has 10 MA's), (Start: 11 @29040 has 1 MA's), (14, 29055), (18, 29070), (22, 29082), (25, 29094), (34, 29124), (51, 29217), (52, 29220), (77, 29370), (101, 29511), (107, 29553),

Gene: Cobra_17 Start: 14000, Stop: 14614, Start Num: 9

Candidate Starts for Cobra_17:

(Start: 9 @14000 has 420 MA's), (Start: 11 @14009 has 1 MA's), (19, 14042), (44, 14144), (76, 14291), (92, 14381), (101, 14426), (122, 14570), (126, 14606),

Gene: Colbert_17 Start: 14000, Stop: 14614, Start Num: 9

Candidate Starts for Colbert_17:

(Start: 9 @14000 has 420 MA's), (Start: 11 @14009 has 1 MA's), (19, 14042), (44, 14144), (76, 14291), (92, 14381), (101, 14426), (122, 14570), (126, 14606),

Gene: Coleslaw_31 Start: 27098, Stop: 27715, Start Num: 9

Candidate Starts for Coleslaw_31:

(Start: 9 @27098 has 420 MA's), (22, 27146), (31, 27179), (34, 27188), (38, 27215), (42, 27239), (49, 27272), (51, 27281), (54, 27293), (57, 27302), (74, 27404), (78, 27419), (82, 27461), (97, 27524), (111, 27626),

Gene: Coletti_17 Start: 14012, Stop: 14626, Start Num: 9

Candidate Starts for Coletti_17:

(Start: 9 @14012 has 420 MA's), (Start: 11 @14021 has 1 MA's), (19, 14054), (44, 14156), (76, 14303), (92, 14393), (101, 14438), (122, 14582), (126, 14618),

Gene: Cooper_17 Start: 14789, Stop: 15397, Start Num: 9

Candidate Starts for Cooper_17:

(Start: 9 @14789 has 420 MA's), (18, 14828), (23, 14843), (29, 14864), (33, 14879), (38, 14909), (44, 14933), (48, 14951), (52, 14969), (53, 14975), (58, 14993), (59, 14996), (71, 15047), (79, 15086), (92, 15170), (94, 15176), (107, 15257), (108, 15266), (110, 15281), (111, 15290), (114, 15311), (125, 15383),

Gene: Cornbread_16 Start: 13713, Stop: 14327, Start Num: 9

Candidate Starts for Cornbread_16:

(Start: 9 @13713 has 420 MA's), (Start: 11 @13722 has 1 MA's), (19, 13755), (44, 13857), (76, 14004), (88, 14085), (92, 14094), (101, 14139), (122, 14283), (126, 14319),

Gene: Cornobble_16 Start: 13557, Stop: 14171, Start Num: 9

Candidate Starts for Cornobble_16:

(Start: 9 @13557 has 420 MA's), (Start: 11 @13566 has 1 MA's), (19, 13599), (44, 13701), (76, 13848), (92, 13938), (101, 13983), (122, 14127), (126, 14163),

Gene: Cosmolli16_16 Start: 13714, Stop: 14328, Start Num: 9

Candidate Starts for Cosmolli16_16:

(Start: 9 @13714 has 420 MA's), (Start: 11 @13723 has 1 MA's), (19, 13756), (44, 13858), (76, 14005), (92, 14095), (101, 14140), (122, 14284), (126, 14320),

Gene: Craff_17 Start: 14003, Stop: 14617, Start Num: 9

Candidate Starts for Craff_17:

(Start: 9 @14003 has 420 MA's), (Start: 11 @14012 has 1 MA's), (19, 14045), (44, 14147), (76, 14294), (92, 14384), (101, 14429), (122, 14573), (126, 14609),

Gene: Crespo_31 Start: 27108, Stop: 27725, Start Num: 9

Candidate Starts for Crespo_31:

(Start: 9 @27108 has 420 MA's), (22, 27156), (31, 27189), (34, 27198), (38, 27225), (42, 27249), (49, 27282), (51, 27291), (54, 27303), (57, 27312), (74, 27414), (78, 27429), (82, 27471), (97, 27534), (111, 27636),

Gene: Crownjwl_17 Start: 13770, Stop: 14384, Start Num: 9

Candidate Starts for Crownjwl_17:

(Start: 9 @13770 has 420 MA's), (Start: 11 @13779 has 1 MA's), (19, 13812), (44, 13914), (76, 14061), (88, 14142), (92, 14151), (101, 14196), (122, 14340), (126, 14376),

Gene: DMoney_31 Start: 27107, Stop: 27724, Start Num: 9

Candidate Starts for DMoney_31:

(Start: 9 @27107 has 420 MA's), (22, 27155), (31, 27188), (34, 27197), (38, 27224), (42, 27248), (49, 27281), (51, 27290), (54, 27302), (57, 27311), (74, 27413), (78, 27428), (82, 27470), (97, 27533), (111, 27635),

Gene: DNAIII_0031 Start: 26858, Stop: 27475, Start Num: 9

Candidate Starts for DNAIII_0031:

(Start: 9 @26858 has 420 MA's), (22, 26906), (34, 26948), (38, 26975), (42, 26999), (49, 27032), (51, 27041), (54, 27053), (57, 27062), (74, 27164), (78, 27179), (82, 27221), (97, 27284), (111, 27386),

Gene: DaddyDaniels_17 Start: 13706, Stop: 14320, Start Num: 9

Candidate Starts for DaddyDaniels_17:

(Start: 9 @13706 has 420 MA's), (Start: 11 @13715 has 1 MA's), (19, 13748), (44, 13850), (76, 13997), (88, 14078), (92, 14087), (101, 14132), (122, 14276), (126, 14312),

Gene: Daegal_37 Start: 30623, Stop: 31243, Start Num: 9

Candidate Starts for Daegal_37:

(5, 30572), (Start: 9 @30623 has 420 MA's), (21, 30671), (29, 30698), (36, 30725), (38, 30743), (51, 30809), (69, 30899), (74, 30932), (85, 31007), (89, 31025), (96, 31049), (99, 31070), (101, 31079), (106, 31115), (107, 31121), (118, 31199),

Gene: Daffy_17 Start: 13722, Stop: 14336, Start Num: 9

Candidate Starts for Daffy_17:

(Start: 9 @13722 has 420 MA's), (Start: 11 @13731 has 1 MA's), (19, 13764), (44, 13866), (76, 14013), (92, 14103), (101, 14148), (122, 14292), (126, 14328),

Gene: Daka_17 Start: 14000, Stop: 14614, Start Num: 9

Candidate Starts for Daka_17:

(Start: 9 @14000 has 420 MA's), (Start: 11 @14009 has 1 MA's), (19, 14042), (44, 14144), (76, 14291), (92, 14381), (101, 14426), (122, 14570), (126, 14606),

Gene: Darionha_31 Start: 27107, Stop: 27724, Start Num: 9

Candidate Starts for Darionha_31:

(Start: 9 @27107 has 420 MA's), (22, 27155), (31, 27188), (34, 27197), (38, 27224), (42, 27248), (49, 27281), (51, 27290), (54, 27302), (57, 27311), (74, 27413), (78, 27428), (82, 27470), (97, 27533), (111, 27635),

Gene: Dati_17 Start: 13710, Stop: 14324, Start Num: 9

Candidate Starts for Dati_17:

(Start: 9 @13710 has 420 MA's), (Start: 11 @13719 has 1 MA's), (19, 13752), (44, 13854), (76, 14001), (88, 14082), (92, 14091), (101, 14136), (122, 14280), (126, 14316),

Gene: DeepSoil15_36 Start: 30329, Stop: 30949, Start Num: 9

Candidate Starts for DeepSoil15_36:

(5, 30278), (Start: 9 @30329 has 420 MA's), (21, 30377), (36, 30431), (38, 30449), (51, 30515), (69, 30605), (74, 30638), (85, 30713), (89, 30731), (96, 30755), (99, 30776), (101, 30785), (106, 30821), (107, 30827), (118, 30905),

Gene: DelRivs_16 Start: 13709, Stop: 14323, Start Num: 9

Candidate Starts for DelRivs_16:

(Start: 9 @13709 has 420 MA's), (Start: 11 @13718 has 1 MA's), (19, 13751), (44, 13853), (76, 14000), (92, 14090), (101, 14135), (122, 14279), (126, 14315),

Gene: Derpp_16 Start: 13556, Stop: 14170, Start Num: 9

Candidate Starts for Derpp_16:

(Start: 9 @13556 has 420 MA's), (Start: 11 @13565 has 1 MA's), (19, 13598), (44, 13700), (76, 13847), (92, 13937), (101, 13982), (122, 14126), (126, 14162),

Gene: Dewey_35 Start: 30329, Stop: 30949, Start Num: 9

Candidate Starts for Dewey_35:

(5, 30278), (Start: 9 @30329 has 420 MA's), (21, 30377), (36, 30431), (38, 30449), (51, 30515), (69, 30605), (74, 30638), (85, 30713), (89, 30731), (96, 30755), (99, 30776), (101, 30785), (106, 30821), (107, 30827), (118, 30905),

Gene: Dice_16 Start: 13697, Stop: 14311, Start Num: 9

Candidate Starts for Dice_16:

(Start: 9 @13697 has 420 MA's), (Start: 11 @13706 has 1 MA's), (19, 13739), (44, 13841), (76, 13988), (88, 14069), (92, 14078), (101, 14123), (126, 14303),

Gene: DigitDog_19 Start: 15565, Stop: 16164, Start Num: 9

Candidate Starts for DigitDog_19:

(Start: 9 @15565 has 420 MA's), (Start: 11 @15574 has 1 MA's), (16, 15595), (27, 15634), (52, 15745), (55, 15757), (58, 15769), (59, 15772), (71, 15823), (84, 15916), (107, 16033), (124, 16156),

Gene: DingDing_31 Start: 27107, Stop: 27724, Start Num: 9

Candidate Starts for DingDing_31:

(Start: 9 @27107 has 420 MA's), (22, 27155), (31, 27188), (34, 27197), (38, 27224), (42, 27248), (49, 27281), (51, 27290), (54, 27302), (57, 27311), (74, 27413), (78, 27428), (82, 27470), (97, 27533), (111, 27635),

Gene: Dingo_17 Start: 13982, Stop: 14596, Start Num: 9

Candidate Starts for Dingo_17:

(Start: 9 @13982 has 420 MA's), (Start: 11 @13991 has 1 MA's), (19, 14024), (44, 14126), (76, 14273), (88, 14354), (92, 14363), (101, 14408), (122, 14552), (126, 14588),

Gene: Dione_16 Start: 13698, Stop: 14312, Start Num: 9

Candidate Starts for Dione_16:

(Start: 9 @13698 has 420 MA's), (Start: 11 @13707 has 1 MA's), (19, 13740), (44, 13842), (76, 13989), (88, 14070), (92, 14079), (101, 14124), (122, 14268), (126, 14304),

Gene: DirtJuice_17 Start: 13985, Stop: 14599, Start Num: 9

Candidate Starts for DirtJuice_17:

(Start: 9 @13985 has 420 MA's), (Start: 11 @13994 has 1 MA's), (19, 14027), (44, 14129), (76, 14276), (88, 14357), (92, 14366), (101, 14411), (122, 14555), (126, 14591),

Gene: Doddsville_17 Start: 13710, Stop: 14324, Start Num: 9

Candidate Starts for Doddsville_17:

(Start: 9 @13710 has 420 MA's), (Start: 11 @13719 has 1 MA's), (19, 13752), (44, 13854), (76, 14001), (88, 14082), (92, 14091), (101, 14136), (122, 14280), (126, 14316),

Gene: DoesntMatter_17 Start: 13979, Stop: 14593, Start Num: 9

Candidate Starts for DoesntMatter_17:

(Start: 9 @13979 has 420 MA's), (Start: 11 @13988 has 1 MA's), (19, 14021), (44, 14123), (76, 14270), (88, 14351), (92, 14360), (101, 14405), (122, 14549), (126, 14585),

Gene: DoIOn_18 Start: 14232, Stop: 14846, Start Num: 9

Candidate Starts for DoIOn_18:

(Start: 9 @14232 has 420 MA's), (Start: 11 @14241 has 1 MA's), (19, 14274), (44, 14376), (76, 14523), (92, 14613), (101, 14658), (122, 14802), (126, 14838),

Gene: DonSanchon_16 Start: 13698, Stop: 14312, Start Num: 9

Candidate Starts for DonSanchon_16:

(Start: 9 @13698 has 420 MA's), (Start: 11 @13707 has 1 MA's), (19, 13740), (44, 13842), (76, 13989), (92, 14079), (101, 14124), (122, 14268), (126, 14304),

Gene: Donny_18 Start: 15600, Stop: 16199, Start Num: 9

Candidate Starts for Donny_18:

(Start: 9 @15600 has 420 MA's), (Start: 11 @15609 has 1 MA's), (16, 15630), (22, 15651), (27, 15669), (29, 15675), (48, 15762), (52, 15780), (55, 15792), (58, 15804), (59, 15807), (86, 15957), (107, 16068), (122, 16170), (124, 16191),

Gene: DuchessDung_16 Start: 13550, Stop: 14164, Start Num: 9

Candidate Starts for DuchessDung_16:

(Start: 9 @13550 has 420 MA's), (Start: 11 @13559 has 1 MA's), (19, 13592), (44, 13694), (76, 13841), (88, 13922), (92, 13931), (101, 13976), (126, 14156),

Gene: Duggie_16 Start: 13712, Stop: 14326, Start Num: 9

Candidate Starts for Duggie_16:

(Start: 9 @13712 has 420 MA's), (Start: 11 @13721 has 1 MA's), (19, 13754), (44, 13856), (76, 14003), (88, 14084), (92, 14093), (101, 14138), (122, 14282), (126, 14318),

Gene: Durga_17 Start: 14011, Stop: 14625, Start Num: 9

Candidate Starts for Durga_17:

(Start: 9 @14011 has 420 MA's), (Start: 11 @14020 has 1 MA's), (19, 14053), (44, 14155), (76, 14302), (92, 14392), (101, 14437), (122, 14581), (126, 14617),

Gene: ECartman_31 Start: 27107, Stop: 27724, Start Num: 9

Candidate Starts for ECartman_31:

(Start: 9 @27107 has 420 MA's), (22, 27155), (31, 27188), (34, 27197), (42, 27248), (49, 27281), (51, 27290), (54, 27302), (57, 27311), (74, 27413), (78, 27428), (82, 27470), (97, 27533),

Gene: EastView9101_18 Start: 15609, Stop: 16208, Start Num: 9

Candidate Starts for EastView9101_18:

(Start: 9 @15609 has 420 MA's), (Start: 11 @15618 has 1 MA's), (16, 15639), (22, 15660), (27, 15678), (32, 15696), (55, 15801), (58, 15813), (59, 15816), (71, 15867), (86, 15966), (98, 16014), (107, 16077), (117, 16152), (124, 16200),

Gene: Ein37_36 Start: 30329, Stop: 30949, Start Num: 9

Candidate Starts for Ein37_36:

(5, 30278), (Start: 9 @30329 has 420 MA's), (21, 30377), (36, 30431), (38, 30449), (51, 30515), (69, 30605), (74, 30638), (85, 30713), (89, 30731), (96, 30755), (99, 30776), (101, 30785), (106, 30821), (107, 30827), (118, 30905),

Gene: ElvisPhasley_17 Start: 14010, Stop: 14624, Start Num: 9

Candidate Starts for ElvisPhasley_17:

(Start: 9 @14010 has 420 MA's), (Start: 11 @14019 has 1 MA's), (19, 14052), (44, 14154), (76, 14301), (92, 14391), (101, 14436), (122, 14580), (126, 14616),

Gene: Emiris_17 Start: 13992, Stop: 14606, Start Num: 9

Candidate Starts for Emiris_17:

(Start: 9 @13992 has 420 MA's), (Start: 11 @14001 has 1 MA's), (19, 14034), (44, 14136), (76, 14283), (92, 14373), (101, 14418), (122, 14562), (126, 14598),

Gene: EmpTee_17 Start: 13998, Stop: 14612, Start Num: 9

Candidate Starts for EmpTee_17:

(Start: 9 @13998 has 420 MA's), (Start: 11 @14007 has 1 MA's), (19, 14040), (44, 14142), (76, 14289), (88, 14370), (92, 14379), (101, 14424), (122, 14568), (126, 14604),

Gene: Epah_16 Start: 14678, Stop: 15289, Start Num: 9

Candidate Starts for Epah_16:

(Start: 9 @14678 has 420 MA's), (18, 14717), (23, 14732), (33, 14768), (48, 14840), (52, 14858), (58, 14882), (59, 14885), (71, 14936), (92, 15059), (102, 15110), (107, 15146), (108, 15155), (123, 15269),

Gene: Eremos_17 Start: 13997, Stop: 14611, Start Num: 9

Candidate Starts for Eremos_17:

(Start: 9 @13997 has 420 MA's), (Start: 11 @14006 has 1 MA's), (19, 14039), (44, 14141), (76, 14288), (92, 14378), (101, 14423), (122, 14567), (126, 14603),

Gene: Etaye_17 Start: 13982, Stop: 14596, Start Num: 9

Candidate Starts for Etaye_17:

(Start: 9 @13982 has 420 MA's), (Start: 11 @13991 has 1 MA's), (19, 14024), (44, 14126), (76, 14273), (92, 14363), (101, 14408), (126, 14588),

Gene: Eugenia_17 Start: 14010, Stop: 14624, Start Num: 9

Candidate Starts for Eugenia_17:

(Start: 9 @14010 has 420 MA's), (Start: 11 @14019 has 1 MA's), (19, 14052), (44, 14154), (76, 14301), (92, 14391), (101, 14436), (122, 14580), (126, 14616),

Gene: Evanesce_35 Start: 30329, Stop: 30949, Start Num: 9

Candidate Starts for Evanesce_35:

(5, 30278), (Start: 9 @30329 has 420 MA's), (21, 30377), (36, 30431), (38, 30449), (51, 30515), (69, 30605), (74, 30638), (85, 30713), (89, 30731), (96, 30755), (99, 30776), (101, 30785), (106, 30821), (107, 30827), (118, 30905),

Gene: Fanaw_17 Start: 15772, Stop: 16383, Start Num: 9

Candidate Starts for Fanaw_17:

(Start: 9 @15772 has 420 MA's), (18, 15811), (23, 15826), (33, 15862), (44, 15916), (48, 15934), (52, 15952), (58, 15976), (59, 15979), (71, 16030), (92, 16153), (97, 16171), (102, 16204), (107, 16240), (123, 16363),

Gene: Fang_17 Start: 14013, Stop: 14627, Start Num: 9

Candidate Starts for Fang_17:

(Start: 9 @14013 has 420 MA's), (Start: 11 @14022 has 1 MA's), (19, 14055), (44, 14157), (76, 14304), (88, 14385), (92, 14394), (101, 14439), (122, 14583), (126, 14619),

Gene: FlagStaff_30 Start: 28613, Stop: 29269, Start Num: 8

Candidate Starts for FlagStaff_30:

(6, 28592), (Start: 8 @28613 has 10 MA's), (Start: 11 @28622 has 1 MA's), (22, 28664), (31, 28697), (38, 28733), (45, 28769), (51, 28799), (59, 28829), (99, 29084), (106, 29129), (107, 29135),

Gene: Flake_17 Start: 14014, Stop: 14628, Start Num: 9

Candidate Starts for Flake_17:

(Start: 9 @14014 has 420 MA's), (Start: 11 @14023 has 1 MA's), (19, 14056), (44, 14158), (76, 14305), (92, 14395), (101, 14440), (122, 14584), (126, 14620),

Gene: FleetyMac_16 Start: 13995, Stop: 14609, Start Num: 9

Candidate Starts for FleetyMac_16:

(Start: 9 @13995 has 420 MA's), (Start: 11 @14004 has 1 MA's), (19, 14037), (44, 14139), (76, 14286), (92, 14376), (101, 14421), (126, 14601),

Gene: FluffyNinja_17 Start: 14001, Stop: 14615, Start Num: 9

Candidate Starts for FluffyNinja_17:

(Start: 9 @14001 has 420 MA's), (Start: 11 @14010 has 1 MA's), (19, 14043), (44, 14145), (76, 14292), (92, 14382), (101, 14427), (122, 14571), (126, 14607),

Gene: Forge_35 Start: 30329, Stop: 30949, Start Num: 9

Candidate Starts for Forge_35:

(5, 30278), (Start: 9 @30329 has 420 MA's), (21, 30377), (36, 30431), (38, 30449), (51, 30515), (69, 30605), (74, 30638), (85, 30713), (89, 30731), (96, 30755), (99, 30776), (101, 30785), (106, 30821), (107, 30827), (118, 30905),

Gene: Fortunato_17 Start: 15736, Stop: 16347, Start Num: 9

Candidate Starts for Fortunato_17:

(Start: 9 @15736 has 420 MA's), (18, 15775), (23, 15790), (29, 15811), (33, 15826), (44, 15880), (48, 15898), (52, 15916), (58, 15940), (59, 15943), (92, 16117), (102, 16168), (123, 16327),

Gene: Fozzie_16 Start: 14007, Stop: 14621, Start Num: 9

Candidate Starts for Fozzie_16:

(Start: 9 @14007 has 420 MA's), (Start: 11 @14016 has 1 MA's), (19, 14049), (44, 14151), (76, 14298), (88, 14379), (92, 14388), (101, 14433), (122, 14577), (126, 14613),

Gene: Frankicide_17 Start: 13999, Stop: 14613, Start Num: 9

Candidate Starts for Frankicide_17:

(Start: 9 @13999 has 420 MA's), (Start: 11 @14008 has 1 MA's), (19, 14041), (44, 14143), (76, 14290), (92, 14380), (101, 14425), (122, 14569), (126, 14605),

Gene: Frederick_17 Start: 15745, Stop: 16356, Start Num: 9

Candidate Starts for Frederick_17:

(Start: 9 @15745 has 420 MA's), (18, 15784), (23, 15799), (29, 15820), (33, 15835), (44, 15889), (48, 15907), (52, 15925), (58, 15949), (59, 15952), (92, 16126), (102, 16177), (123, 16336),

Gene: FremontTroll_17 Start: 13696, Stop: 14310, Start Num: 9

Candidate Starts for FremontTroll_17:

(Start: 9 @13696 has 420 MA's), (Start: 11 @13705 has 1 MA's), (19, 13738), (44, 13840), (76, 13987), (92, 14077), (101, 14122), (122, 14266), (126, 14302),

Gene: Freya_16 Start: 13693, Stop: 14307, Start Num: 9

Candidate Starts for Freya_16:

(Start: 9 @13693 has 420 MA's), (Start: 11 @13702 has 1 MA's), (19, 13735), (44, 13837), (76, 13984), (92, 14074), (101, 14119), (122, 14263), (126, 14299),

Gene: FriarPreacher_17 Start: 14018, Stop: 14632, Start Num: 9

Candidate Starts for FriarPreacher_17:

(Start: 9 @14018 has 420 MA's), (Start: 11 @14027 has 1 MA's), (19, 14060), (44, 14162), (76, 14309), (92, 14399), (101, 14444), (122, 14588), (126, 14624),

Gene: Fringe_17 Start: 13980, Stop: 14594, Start Num: 9

Candidate Starts for Fringe_17:

(Start: 9 @13980 has 420 MA's), (Start: 11 @13989 has 1 MA's), (19, 14022), (44, 14124), (76, 14271), (88, 14352), (92, 14361), (101, 14406), (122, 14550), (126, 14586),

Gene: Frosty24_31 Start: 27107, Stop: 27724, Start Num: 9

Candidate Starts for Frosty24_31:

(Start: 9 @27107 has 420 MA's), (22, 27155), (31, 27188), (34, 27197), (38, 27224), (42, 27248), (49, 27281), (51, 27290), (54, 27302), (57, 27311), (74, 27413), (78, 27428), (82, 27470), (97, 27533), (111, 27635),

Gene: FugateOSU_16 Start: 13704, Stop: 14318, Start Num: 9

Candidate Starts for FugateOSU_16:

(Start: 9 @13704 has 420 MA's), (Start: 11 @13713 has 1 MA's), (19, 13746), (44, 13848), (76, 13995), (92, 14085), (101, 14130), (122, 14274), (126, 14310),

Gene: Funsized_21 Start: 17730, Stop: 18329, Start Num: 9

Candidate Starts for Funsized_21:

(Start: 9 @17730 has 420 MA's), (16, 17760), (25, 17793), (27, 17799), (44, 17874), (53, 17916), (55, 17922), (58, 17934), (68, 17970), (105, 18189), (107, 18198), (116, 18264), (119, 18279), (122, 18300),

Gene: Gancho_35 Start: 30052, Stop: 30672, Start Num: 9

Candidate Starts for Gancho_35:

(5, 30001), (Start: 9 @30052 has 420 MA's), (21, 30100), (36, 30154), (38, 30172), (51, 30238), (69, 30328), (74, 30361), (85, 30436), (89, 30454), (96, 30478), (99, 30499), (101, 30508), (106, 30544), (107, 30550), (118, 30628),

Gene: Gareth_16 Start: 13701, Stop: 14315, Start Num: 9

Candidate Starts for Gareth_16:

(Start: 9 @13701 has 420 MA's), (Start: 11 @13710 has 1 MA's), (19, 13743), (44, 13845), (76, 13992), (92, 14082), (101, 14127), (122, 14271), (126, 14307),

Gene: GeneCoco_17 Start: 14003, Stop: 14617, Start Num: 9

Candidate Starts for GeneCoco_17:

(Start: 9 @14003 has 420 MA's), (Start: 11 @14012 has 1 MA's), (19, 14045), (44, 14147), (76, 14294), (88, 14375), (92, 14384), (101, 14429), (126, 14609),

Gene: Gideon_31 Start: 27107, Stop: 27724, Start Num: 9

Candidate Starts for Gideon_31:

(Start: 9 @27107 has 420 MA's), (22, 27155), (31, 27188), (34, 27197), (38, 27224), (42, 27248), (49, 27281), (51, 27290), (54, 27302), (57, 27311), (74, 27413), (78, 27428), (82, 27470), (97, 27533), (111,

27635),

Gene: Giles_35 Start: 30329, Stop: 30949, Start Num: 9

Candidate Starts for Giles_35:

(5, 30278), (Start: 9 @30329 has 420 MA's), (21, 30377), (36, 30431), (38, 30449), (51, 30515), (69, 30605), (74, 30638), (85, 30713), (89, 30731), (96, 30755), (99, 30776), (101, 30785), (106, 30821), (107, 30827), (118, 30905),

Gene: GinPorsche_16 Start: 14678, Stop: 15289, Start Num: 9

Candidate Starts for GinPorsche_16:

(Start: 9 @14678 has 420 MA's), (18, 14717), (23, 14732), (33, 14768), (48, 14840), (52, 14858), (58, 14882), (59, 14885), (71, 14936), (92, 15059), (102, 15110), (107, 15146), (108, 15155), (123, 15269),

Gene: Giraffe_17 Start: 13705, Stop: 14319, Start Num: 9

Candidate Starts for Giraffe_17:

(Start: 9 @13705 has 420 MA's), (Start: 11 @13714 has 1 MA's), (19, 13747), (44, 13849), (76, 13996), (92, 14086), (101, 14131), (122, 14275), (126, 14311),

Gene: GodSpeed_31 Start: 28637, Stop: 29293, Start Num: 8

Candidate Starts for GodSpeed_31:

(Start: 8 @28637 has 10 MA's), (Start: 11 @28646 has 1 MA's), (22, 28688), (51, 28823), (59, 28853), (102, 29123), (106, 29153),

Gene: GoldenAsh_31 Start: 27107, Stop: 27724, Start Num: 9

Candidate Starts for GoldenAsh_31:

(Start: 9 @27107 has 420 MA's), (22, 27155), (31, 27188), (34, 27197), (38, 27224), (42, 27248), (49, 27281), (51, 27290), (54, 27302), (57, 27311), (74, 27413), (78, 27428), (82, 27470), (97, 27533), (111, 27635),

Gene: Gomashi_31 Start: 27108, Stop: 27725, Start Num: 9

Candidate Starts for Gomashi_31:

(Start: 9 @27108 has 420 MA's), (22, 27156), (31, 27189), (34, 27198), (38, 27225), (42, 27249), (49, 27282), (51, 27291), (54, 27303), (57, 27312), (74, 27414), (78, 27429), (82, 27471), (97, 27534), (111, 27636),

Gene: Gophee_17 Start: 13982, Stop: 14596, Start Num: 9

Candidate Starts for Gophee_17:

(Start: 9 @13982 has 420 MA's), (Start: 11 @13991 has 1 MA's), (19, 14024), (44, 14126), (76, 14273), (88, 14354), (92, 14363), (101, 14408), (122, 14552), (126, 14588),

Gene: Grand2040_16 Start: 13720, Stop: 14334, Start Num: 9

Candidate Starts for Grand2040_16:

(Start: 9 @13720 has 420 MA's), (Start: 11 @13729 has 1 MA's), (19, 13762), (44, 13864), (76, 14011), (92, 14101), (101, 14146), (122, 14290), (126, 14326),

Gene: Gravaillia_35 Start: 30058, Stop: 30678, Start Num: 9

Candidate Starts for Gravaillia_35:

(5, 30007), (Start: 9 @30058 has 420 MA's), (21, 30106), (36, 30160), (38, 30178), (46, 30220), (59, 30274), (69, 30334), (74, 30367), (85, 30442), (89, 30460), (96, 30484), (106, 30550), (107, 30556), (118, 30634),

Gene: GreenChile_17 Start: 13999, Stop: 14613, Start Num: 9

Candidate Starts for GreenChile_17:

(Start: 9 @13999 has 420 MA's), (Start: 11 @14008 has 1 MA's), (19, 14041), (44, 14143), (76, 14290), (92, 14380), (101, 14425), (122, 14569), (126, 14605),

Gene: Grizzly_31 Start: 27107, Stop: 27724, Start Num: 9

Candidate Starts for Grizzly_31:

(Start: 9 @27107 has 420 MA's), (22, 27155), (31, 27188), (34, 27197), (42, 27248), (49, 27281), (54, 27302), (57, 27311), (74, 27413), (78, 27428), (82, 27470), (84, 27485), (97, 27533), (111, 27635),

Gene: Gwennie1_17 Start: 14021, Stop: 14635, Start Num: 9

Candidate Starts for Gwennie1_17:

(Start: 9 @14021 has 420 MA's), (Start: 11 @14030 has 1 MA's), (19, 14063), (44, 14165), (76, 14312), (92, 14402), (101, 14447), (122, 14591), (126, 14627),

Gene: Gwilliam_17 Start: 13994, Stop: 14608, Start Num: 9

Candidate Starts for Gwilliam_17:

(Start: 9 @13994 has 420 MA's), (Start: 11 @14003 has 1 MA's), (19, 14036), (44, 14138), (76, 14285), (92, 14375), (101, 14420), (122, 14564), (126, 14600),

Gene: Gyarad_0017 Start: 13997, Stop: 14611, Start Num: 9

Candidate Starts for Gyarad_0017:

(Start: 9 @13997 has 420 MA's), (Start: 11 @14006 has 1 MA's), (19, 14039), (44, 14141), (76, 14288), (92, 14378), (101, 14423), (122, 14567), (126, 14603),

Gene: HH92_35 Start: 30329, Stop: 30949, Start Num: 9

Candidate Starts for HH92_35:

(5, 30278), (Start: 9 @30329 has 420 MA's), (21, 30377), (36, 30431), (38, 30449), (51, 30515), (69, 30605), (74, 30638), (85, 30713), (89, 30731), (96, 30755), (99, 30776), (101, 30785), (106, 30821), (107, 30827), (118, 30905),

Gene: HSavage_17 Start: 14005, Stop: 14619, Start Num: 9

Candidate Starts for HSavage_17:

(Start: 9 @14005 has 420 MA's), (Start: 11 @14014 has 1 MA's), (19, 14047), (44, 14149), (76, 14296), (92, 14386), (101, 14431), (122, 14575), (126, 14611),

Gene: Hadrien_36 Start: 30329, Stop: 30949, Start Num: 9

Candidate Starts for Hadrien_36:

(5, 30278), (Start: 9 @30329 has 420 MA's), (21, 30377), (36, 30431), (38, 30449), (51, 30515), (69, 30605), (74, 30638), (85, 30713), (89, 30731), (96, 30755), (99, 30776), (101, 30785), (106, 30821), (107, 30827), (118, 30905),

Gene: Hail_35 Start: 30329, Stop: 30949, Start Num: 9

Candidate Starts for Hail_35:

(5, 30278), (Start: 9 @30329 has 420 MA's), (21, 30377), (36, 30431), (38, 30449), (51, 30515), (69, 30605), (74, 30638), (85, 30713), (89, 30731), (96, 30755), (99, 30776), (101, 30785), (106, 30821), (107, 30827), (118, 30905),

Gene: Haimas_17 Start: 13997, Stop: 14611, Start Num: 9

Candidate Starts for Haimas_17:

(Start: 9 @13997 has 420 MA's), (Start: 11 @14006 has 1 MA's), (19, 14039), (44, 14141), (76, 14288), (92, 14378), (101, 14423), (122, 14567), (126, 14603),

Gene: Haleema_16 Start: 13722, Stop: 14336, Start Num: 9

Candidate Starts for Haleema_16:

(Start: 9 @13722 has 420 MA's), (Start: 11 @13731 has 1 MA's), (19, 13764), (44, 13866), (76, 14013), (88, 14094), (92, 14103), (101, 14148), (122, 14292), (126, 14328),

Gene: Hally898_16 Start: 14678, Stop: 15289, Start Num: 9

Candidate Starts for Hally898_16:

(Start: 9 @14678 has 420 MA's), (18, 14717), (23, 14732), (33, 14768), (48, 14840), (52, 14858), (58, 14882), (59, 14885), (71, 14936), (92, 15059), (102, 15110), (107, 15146), (108, 15155), (123, 15269),

Gene: Halo_31 Start: 27102, Stop: 27719, Start Num: 9

Candidate Starts for Halo_31:

(Start: 9 @27102 has 420 MA's), (22, 27150), (31, 27183), (34, 27192), (38, 27219), (42, 27243), (49, 27276), (51, 27285), (54, 27297), (57, 27306), (74, 27408), (78, 27423), (82, 27465), (97, 27528), (111, 27630),

Gene: Hamish_17 Start: 13991, Stop: 14605, Start Num: 9

Candidate Starts for Hamish_17:

(Start: 9 @13991 has 420 MA's), (Start: 11 @14000 has 1 MA's), (19, 14033), (44, 14135), (76, 14282), (88, 14363), (92, 14372), (101, 14417), (122, 14561), (126, 14597),

Gene: Hangman_17 Start: 15745, Stop: 16356, Start Num: 9

Candidate Starts for Hangman_17:

(Start: 9 @15745 has 420 MA's), (18, 15784), (23, 15799), (33, 15835), (44, 15889), (48, 15907), (52, 15925), (58, 15949), (71, 16003), (87, 16108), (92, 16126), (93, 16129), (102, 16177), (107, 16213), (123, 16336),

Gene: Happabalu_17 Start: 13691, Stop: 14305, Start Num: 9

Candidate Starts for Happabalu_17:

(Start: 9 @13691 has 420 MA's), (Start: 11 @13700 has 1 MA's), (19, 13733), (44, 13835), (76, 13982), (92, 14072), (101, 14117), (122, 14261), (126, 14297),

Gene: Hartsy_17 Start: 13994, Stop: 14608, Start Num: 9

Candidate Starts for Hartsy_17:

(Start: 9 @13994 has 420 MA's), (Start: 11 @14003 has 1 MA's), (19, 14036), (44, 14138), (76, 14285), (92, 14375), (101, 14420), (122, 14564), (126, 14600),

Gene: Harvey_17 Start: 14019, Stop: 14633, Start Num: 9

Candidate Starts for Harvey_17:

(Start: 9 @14019 has 420 MA's), (Start: 11 @14028 has 1 MA's), (19, 14061), (44, 14163), (76, 14310), (92, 14400), (101, 14445), (122, 14589), (126, 14625),

Gene: Heath_17 Start: 15742, Stop: 16353, Start Num: 9

Candidate Starts for Heath_17:

(Start: 9 @15742 has 420 MA's), (18, 15781), (23, 15796), (38, 15862), (44, 15886), (48, 15904), (52, 15922), (58, 15946), (71, 16000), (92, 16123), (102, 16174), (107, 16210), (123, 16333),

Gene: Hekos_16 Start: 13721, Stop: 14335, Start Num: 9

Candidate Starts for Hekos_16:

(Start: 9 @13721 has 420 MA's), (Start: 11 @13730 has 1 MA's), (19, 13763), (44, 13865), (76, 14012), (88, 14093), (92, 14102), (101, 14147), (122, 14291), (126, 14327),

Gene: Held_17 Start: 13705, Stop: 14319, Start Num: 9

Candidate Starts for Held_17:

(Start: 9 @13705 has 420 MA's), (Start: 11 @13714 has 1 MA's), (19, 13747), (44, 13849), (76, 13996), (92, 14086), (101, 14131), (122, 14275), (126, 14311),

Gene: HenryJackson_16 Start: 13719, Stop: 14333, Start Num: 9
Candidate Starts for HenryJackson_16:

(Start: 9 @13719 has 420 MA's), (Start: 11 @13728 has 1 MA's), (19, 13761), (44, 13863), (76, 14010), (88, 14091), (92, 14100), (101, 14145), (122, 14289), (126, 14325),

Gene: Hertubise_17 Start: 14012, Stop: 14626, Start Num: 9
Candidate Starts for Hertubise_17:

(Start: 9 @14012 has 420 MA's), (Start: 11 @14021 has 1 MA's), (19, 14054), (44, 14156), (76, 14303), (92, 14393), (101, 14438), (122, 14582), (126, 14618),

Gene: Hetaeria_17 Start: 14015, Stop: 14629, Start Num: 9
Candidate Starts for Hetaeria_17:

(Start: 9 @14015 has 420 MA's), (Start: 11 @14024 has 1 MA's), (19, 14057), (44, 14159), (76, 14306), (92, 14396), (101, 14441), (122, 14585), (126, 14621),

Gene: HighStump_16 Start: 13704, Stop: 14318, Start Num: 9
Candidate Starts for HighStump_16:

(Start: 9 @13704 has 420 MA's), (Start: 11 @13713 has 1 MA's), (19, 13746), (44, 13848), (76, 13995), (92, 14085), (101, 14130), (122, 14274), (126, 14310),

Gene: Hocus_16 Start: 13704, Stop: 14318, Start Num: 9
Candidate Starts for Hocus_16:

(Start: 9 @13704 has 420 MA's), (Start: 11 @13713 has 1 MA's), (19, 13746), (44, 13848), (76, 13995), (92, 14085), (101, 14130), (122, 14274), (126, 14310),

Gene: HogWash_16 Start: 14000, Stop: 14614, Start Num: 9
Candidate Starts for HogWash_16:

(Start: 9 @14000 has 420 MA's), (Start: 11 @14009 has 1 MA's), (19, 14042), (44, 14144), (76, 14291), (92, 14381), (101, 14426), (122, 14570), (126, 14606),

Gene: Hope_31 Start: 27107, Stop: 27724, Start Num: 9
Candidate Starts for Hope_31:

(Start: 9 @27107 has 420 MA's), (22, 27155), (31, 27188), (34, 27197), (38, 27224), (42, 27248), (49, 27281), (51, 27290), (54, 27302), (57, 27311), (74, 27413), (78, 27428), (82, 27470), (97, 27533), (111, 27635),

Gene: Horchata_17 Start: 13984, Stop: 14598, Start Num: 9
Candidate Starts for Horchata_17:

(Start: 9 @13984 has 420 MA's), (Start: 11 @13993 has 1 MA's), (19, 14026), (44, 14128), (76, 14275), (88, 14356), (92, 14365), (101, 14410), (122, 14554), (126, 14590),

Gene: Hotshotbaby7_31 Start: 27107, Stop: 27724, Start Num: 9
Candidate Starts for Hotshotbaby7_31:

(Start: 9 @27107 has 420 MA's), (22, 27155), (31, 27188), (34, 27197), (42, 27248), (49, 27281), (51, 27290), (54, 27302), (57, 27311), (74, 27413), (78, 27428), (82, 27470), (97, 27533),

Gene: Hydro_17 Start: 15742, Stop: 16353, Start Num: 9
Candidate Starts for Hydro_17:

(Start: 9 @15742 has 420 MA's), (18, 15781), (23, 15796), (33, 15832), (44, 15886), (48, 15904), (52, 15922), (58, 15946), (71, 16000), (87, 16105), (92, 16123), (93, 16126), (102, 16174), (107, 16210),

(123, 16333),

Gene: ImtiyazSitla_16 Start: 13544, Stop: 14158, Start Num: 9

Candidate Starts for ImtiyazSitla_16:

(Start: 9 @13544 has 420 MA's), (Start: 11 @13553 has 1 MA's), (19, 13586), (44, 13688), (76, 13835), (92, 13925), (101, 13970), (122, 14114), (126, 14150),

Gene: Inchworm_17 Start: 13988, Stop: 14602, Start Num: 9

Candidate Starts for Inchworm_17:

(Start: 9 @13988 has 420 MA's), (Start: 11 @13997 has 1 MA's), (19, 14030), (44, 14132), (76, 14279), (88, 14360), (92, 14369), (101, 14414), (122, 14558), (126, 14594),

Gene: Indlovu_17 Start: 15595, Stop: 16194, Start Num: 9

Candidate Starts for Indlovu_17:

(Start: 9 @15595 has 420 MA's), (Start: 11 @15604 has 1 MA's), (21, 15643), (32, 15682), (48, 15757), (56, 15790), (82, 15931), (88, 15967), (92, 15976), (113, 16111), (115, 16126),

Gene: Inverness_17 Start: 14005, Stop: 14619, Start Num: 9

Candidate Starts for Inverness_17:

(Start: 9 @14005 has 420 MA's), (Start: 11 @14014 has 1 MA's), (19, 14047), (44, 14149), (76, 14296), (92, 14386), (101, 14431), (122, 14575), (126, 14611),

Gene: Iridessa_17 Start: 13673, Stop: 14287, Start Num: 9

Candidate Starts for Iridessa_17:

(Start: 9 @13673 has 420 MA's), (Start: 11 @13682 has 1 MA's), (19, 13715), (44, 13817), (76, 13964), (92, 14054), (101, 14099), (122, 14243), (126, 14279),

Gene: Iridoclysis_17 Start: 13977, Stop: 14591, Start Num: 9

Candidate Starts for Iridoclysis_17:

(Start: 9 @13977 has 420 MA's), (Start: 11 @13986 has 1 MA's), (19, 14019), (44, 14121), (76, 14268), (88, 14349), (92, 14358), (101, 14403), (122, 14547), (126, 14583),

Gene: IsaacEli_17 Start: 14009, Stop: 14623, Start Num: 9

Candidate Starts for IsaacEli_17:

(Start: 9 @14009 has 420 MA's), (Start: 11 @14018 has 1 MA's), (19, 14051), (44, 14153), (76, 14300), (92, 14390), (101, 14435), (122, 14579), (126, 14615),

Gene: JAMaL_17 Start: 15926, Stop: 16537, Start Num: 9

Candidate Starts for JAMaL_17:

(Start: 9 @15926 has 420 MA's), (18, 15965), (23, 15980), (33, 16016), (48, 16088), (49, 16094), (52, 16106), (58, 16130), (59, 16133), (71, 16184), (92, 16307), (102, 16358), (107, 16394), (108, 16403), (123, 16517),

Gene: JDog_16 Start: 13712, Stop: 14326, Start Num: 9

Candidate Starts for JDog_16:

(Start: 9 @13712 has 420 MA's), (Start: 11 @13721 has 1 MA's), (19, 13754), (44, 13856), (76, 14003), (88, 14084), (92, 14093), (101, 14138), (122, 14282), (126, 14318),

Gene: JacAttac_17 Start: 13988, Stop: 14602, Start Num: 9

Candidate Starts for JacAttac_17:

(Start: 9 @13988 has 420 MA's), (Start: 11 @13997 has 1 MA's), (19, 14030), (44, 14132), (76, 14279), (88, 14360), (92, 14369), (101, 14414), (126, 14594),

Gene: JacoRen57_28 Start: 25768, Stop: 26319, Start Num: 10

Candidate Starts for JacoRen57_28:

(Start: 10 @25768 has 1 MA's), (20, 25810), (24, 25828), (27, 25837), (41, 25906), (58, 25966), (69, 26008), (83, 26101), (85, 26116), (121, 26311),

Gene: JaguarMi_18 Start: 15572, Stop: 16183, Start Num: 9

Candidate Starts for JaguarMi_18:

(Start: 9 @15572 has 420 MA's), (18, 15611), (23, 15626), (29, 15647), (33, 15662), (44, 15716), (48, 15734), (58, 15776), (71, 15830), (92, 15953), (102, 16004), (107, 16040),

Gene: JakeO_16 Start: 13712, Stop: 14326, Start Num: 9

Candidate Starts for JakeO_16:

(Start: 9 @13712 has 420 MA's), (Start: 11 @13721 has 1 MA's), (19, 13754), (44, 13856), (76, 14003), (88, 14084), (92, 14093), (101, 14138), (122, 14282), (126, 14318),

Gene: Jane_31 Start: 27107, Stop: 27724, Start Num: 9

Candidate Starts for Jane_31:

(Start: 9 @27107 has 420 MA's), (22, 27155), (31, 27188), (34, 27197), (38, 27224), (42, 27248), (49, 27281), (51, 27290), (54, 27302), (57, 27311), (74, 27413), (78, 27428), (82, 27470), (97, 27533), (111, 27635),

Gene: JangoPhett_17 Start: 13989, Stop: 14603, Start Num: 9

Candidate Starts for JangoPhett_17:

(Start: 9 @13989 has 420 MA's), (Start: 11 @13998 has 1 MA's), (19, 14031), (44, 14133), (76, 14280), (92, 14370), (101, 14415), (122, 14559), (126, 14595),

Gene: Jeilious_31 Start: 27106, Stop: 27723, Start Num: 9

Candidate Starts for Jeilious_31:

(Start: 9 @27106 has 420 MA's), (22, 27154), (31, 27187), (34, 27196), (38, 27223), (42, 27247), (49, 27280), (51, 27289), (54, 27301), (57, 27310), (74, 27412), (78, 27427), (82, 27469), (97, 27532), (111, 27634),

Gene: Jesabah_17 Start: 13717, Stop: 14331, Start Num: 9

Candidate Starts for Jesabah_17:

(Start: 9 @13717 has 420 MA's), (Start: 11 @13726 has 1 MA's), (19, 13759), (44, 13861), (76, 14008), (92, 14098), (101, 14143), (122, 14287), (126, 14323),

Gene: Jillium_16 Start: 13710, Stop: 14324, Start Num: 9

Candidate Starts for Jillium_16:

(Start: 9 @13710 has 420 MA's), (Start: 11 @13719 has 1 MA's), (19, 13752), (44, 13854), (76, 14001), (92, 14091), (101, 14136), (122, 14280), (126, 14316),

Gene: Jiminy_16 Start: 13552, Stop: 14166, Start Num: 9

Candidate Starts for Jiminy_16:

(Start: 9 @13552 has 420 MA's), (Start: 11 @13561 has 1 MA's), (19, 13594), (44, 13696), (76, 13843), (92, 13933), (101, 13978), (122, 14122), (126, 14158),

Gene: Jiraiya_16 Start: 13712, Stop: 14326, Start Num: 9

Candidate Starts for Jiraiya_16:

(Start: 9 @13712 has 420 MA's), (Start: 11 @13721 has 1 MA's), (19, 13754), (44, 13856), (76, 14003), (88, 14084), (92, 14093), (101, 14138), (122, 14282), (126, 14318),

Gene: Jolene_31 Start: 27107, Stop: 27724, Start Num: 9

Candidate Starts for Jolene_31:

(Start: 9 @27107 has 420 MA's), (22, 27155), (31, 27188), (34, 27197), (42, 27248), (49, 27281), (51, 27290), (54, 27302), (57, 27311), (74, 27413), (78, 27428), (82, 27470), (97, 27533),

Gene: Jolie2_31 Start: 27699, Stop: 28331, Start Num: 8

Candidate Starts for Jolie2_31:

(Start: 8 @27699 has 10 MA's), (22, 27750), (26, 27765), (53, 27894), (54, 27897), (67, 27945), (77, 28017), (99, 28146),

Gene: Jonghyun_31 Start: 27107, Stop: 27724, Start Num: 9

Candidate Starts for Jonghyun_31:

(Start: 9 @27107 has 420 MA's), (22, 27155), (31, 27188), (34, 27197), (42, 27248), (49, 27281), (51, 27290), (54, 27302), (57, 27311), (74, 27413), (78, 27428), (82, 27470), (97, 27533),

Gene: JorRay_31 Start: 27107, Stop: 27724, Start Num: 9

Candidate Starts for JorRay_31:

(Start: 9 @27107 has 420 MA's), (22, 27155), (31, 27188), (34, 27197), (38, 27224), (42, 27248), (49, 27281), (51, 27290), (54, 27302), (57, 27311), (74, 27413), (78, 27428), (82, 27470), (97, 27533), (111, 27635),

Gene: JoyceMaria_17 Start: 15745, Stop: 16356, Start Num: 9

Candidate Starts for JoyceMaria_17:

(Start: 9 @15745 has 420 MA's), (18, 15784), (23, 15799), (33, 15835), (44, 15889), (48, 15907), (52, 15925), (58, 15949), (71, 16003), (92, 16126), (102, 16177), (107, 16213), (123, 16336),

Gene: KLucky39_17 Start: 13997, Stop: 14611, Start Num: 9

Candidate Starts for KLucky39_17:

(Start: 9 @13997 has 420 MA's), (Start: 11 @14006 has 1 MA's), (19, 14039), (44, 14141), (76, 14288), (92, 14378), (101, 14423), (122, 14567), (126, 14603),

Gene: Kahve_16 Start: 13719, Stop: 14333, Start Num: 9

Candidate Starts for Kahve_16:

(Start: 9 @13719 has 420 MA's), (Start: 11 @13728 has 1 MA's), (19, 13761), (44, 13863), (76, 14010), (88, 14091), (92, 14100), (101, 14145), (122, 14289), (126, 14325),

Gene: Kailash_17 Start: 14006, Stop: 14620, Start Num: 9

Candidate Starts for Kailash_17:

(Start: 9 @14006 has 420 MA's), (Start: 11 @14015 has 1 MA's), (19, 14048), (44, 14150), (76, 14297), (92, 14387), (101, 14432), (122, 14576), (126, 14612),

Gene: KarasumaRum_20 Start: 15730, Stop: 16320, Start Num: 11

Candidate Starts for KarasumaRum_20:

(Start: 9 @15721 has 420 MA's), (Start: 11 @15730 has 1 MA's), (16, 15751), (27, 15790), (55, 15913), (58, 15925), (59, 15928), (107, 16189), (124, 16312),

Gene: Kareem_31 Start: 27107, Stop: 27724, Start Num: 9

Candidate Starts for Kareem_31:

(Start: 9 @27107 has 420 MA's), (22, 27155), (31, 27188), (34, 27197), (38, 27224), (42, 27248), (49, 27281), (51, 27290), (54, 27302), (57, 27311), (74, 27413), (78, 27428), (82, 27470), (97, 27533), (111, 27635),

Gene: Karn_16 Start: 13712, Stop: 14326, Start Num: 9

Candidate Starts for Karn_16:

(Start: 9 @13712 has 420 MA's), (Start: 11 @13721 has 1 MA's), (19, 13754), (44, 13856), (76, 14003), (88, 14084), (92, 14093), (101, 14138), (126, 14318),

Gene: Kasen3_31 Start: 27108, Stop: 27725, Start Num: 9

Candidate Starts for Kasen3_31:

(Start: 9 @27108 has 420 MA's), (22, 27156), (31, 27189), (34, 27198), (38, 27225), (42, 27249), (49, 27282), (51, 27291), (54, 27303), (57, 27312), (74, 27414), (78, 27429), (82, 27471), (97, 27534), (111, 27636),

Gene: Katniss_17 Start: 14016, Stop: 14630, Start Num: 9

Candidate Starts for Katniss_17:

(Start: 9 @14016 has 420 MA's), (Start: 11 @14025 has 1 MA's), (19, 14058), (44, 14160), (76, 14307), (92, 14397), (101, 14442), (122, 14586), (126, 14622),

Gene: Keitherie_17 Start: 14017, Stop: 14631, Start Num: 9

Candidate Starts for Keitherie_17:

(Start: 9 @14017 has 420 MA's), (Start: 11 @14026 has 1 MA's), (19, 14059), (44, 14161), (76, 14308), (88, 14389), (92, 14398), (101, 14443), (122, 14587), (126, 14623),

Gene: Khan1_17 Start: 13712, Stop: 14326, Start Num: 9

Candidate Starts for Khan1_17:

(Start: 9 @13712 has 420 MA's), (Start: 11 @13721 has 1 MA's), (19, 13754), (44, 13856), (76, 14003), (88, 14084), (92, 14093), (101, 14138), (126, 14318),

Gene: Kikipoo_17 Start: 14009, Stop: 14623, Start Num: 9

Candidate Starts for Kikipoo_17:

(Start: 9 @14009 has 420 MA's), (Start: 11 @14018 has 1 MA's), (19, 14051), (44, 14153), (76, 14300), (92, 14390), (101, 14435), (122, 14579), (126, 14615),

Gene: Kimbrough_17 Start: 13707, Stop: 14321, Start Num: 9

Candidate Starts for Kimbrough_17:

(Start: 9 @13707 has 420 MA's), (Start: 11 @13716 has 1 MA's), (19, 13749), (44, 13851), (76, 13998), (92, 14088), (101, 14133), (122, 14277), (126, 14313),

Gene: Kinbote_36 Start: 30329, Stop: 30949, Start Num: 9

Candidate Starts for Kinbote_36:

(5, 30278), (Start: 9 @30329 has 420 MA's), (21, 30377), (36, 30431), (38, 30449), (51, 30515), (69, 30605), (74, 30638), (85, 30713), (89, 30731), (96, 30755), (99, 30776), (101, 30785), (106, 30821), (107, 30827), (118, 30905),

Gene: KingTut_16 Start: 13699, Stop: 14313, Start Num: 9

Candidate Starts for KingTut_16:

(Start: 9 @13699 has 420 MA's), (Start: 11 @13708 has 1 MA's), (19, 13741), (44, 13843), (76, 13990), (92, 14080), (101, 14125), (122, 14269), (126, 14305),

Gene: KingVeVeVe_17 Start: 13986, Stop: 14600, Start Num: 9

Candidate Starts for KingVeVeVe_17:

(Start: 9 @13986 has 420 MA's), (Start: 11 @13995 has 1 MA's), (19, 14028), (44, 14130), (76, 14277), (88, 14358), (92, 14367), (101, 14412), (122, 14556), (126, 14592),

Gene: KlimbOn_17 Start: 13997, Stop: 14611, Start Num: 9

Candidate Starts for KlimbOn_17:

(Start: 9 @13997 has 420 MA's), (Start: 11 @14006 has 1 MA's), (19, 14039), (44, 14141), (76, 14288), (92, 14378), (101, 14423), (122, 14567), (126, 14603),

Gene: Kloppinator_17 Start: 14013, Stop: 14627, Start Num: 9

Candidate Starts for Kloppinator_17:

(Start: 9 @14013 has 420 MA's), (Start: 11 @14022 has 1 MA's), (19, 14055), (44, 14157), (76, 14304), (92, 14394), (101, 14439), (122, 14583), (126, 14619),

Gene: Klocker_21 Start: 18098, Stop: 18703, Start Num: 9

Candidate Starts for Klocker_21:

(Start: 9 @18098 has 420 MA's), (Start: 10 @18101 has 1 MA's), (Start: 11 @18107 has 1 MA's), (18, 18137), (24, 18158), (27, 18167), (33, 18188), (38, 18218), (48, 18260), (60, 18308), (63, 18329), (71, 18356), (73, 18371), (81, 18428), (84, 18449), (88, 18470), (92, 18479), (101, 18524), (107, 18566), (117, 18641), (124, 18689),

Gene: Kwadwo_16 Start: 13698, Stop: 14312, Start Num: 9

Candidate Starts for Kwadwo_16:

(Start: 9 @13698 has 420 MA's), (Start: 11 @13707 has 1 MA's), (19, 13740), (44, 13842), (76, 13989), (88, 14070), (92, 14079), (101, 14124), (126, 14304),

Gene: Kwksand96_16 Start: 13562, Stop: 14176, Start Num: 9

Candidate Starts for Kwksand96_16:

(Start: 9 @13562 has 420 MA's), (Start: 11 @13571 has 1 MA's), (19, 13604), (44, 13706), (76, 13853), (88, 13934), (92, 13943), (101, 13988), (126, 14168),

Gene: Labeouficaum_16 Start: 13556, Stop: 14170, Start Num: 9

Candidate Starts for Labeouficaum_16:

(Start: 9 @13556 has 420 MA's), (Start: 11 @13565 has 1 MA's), (19, 13598), (44, 13700), (76, 13847), (92, 13937), (101, 13982), (122, 14126), (126, 14162),

Gene: Lambano_16 Start: 14678, Stop: 15289, Start Num: 9

Candidate Starts for Lambano_16:

(Start: 9 @14678 has 420 MA's), (18, 14717), (23, 14732), (33, 14768), (48, 14840), (52, 14858), (58, 14882), (59, 14885), (71, 14936), (92, 15059), (102, 15110), (107, 15146), (108, 15155), (123, 15269),

Gene: Larson_18 Start: 14014, Stop: 14628, Start Num: 9

Candidate Starts for Larson_18:

(Start: 9 @14014 has 420 MA's), (Start: 11 @14023 has 1 MA's), (19, 14056), (44, 14158), (76, 14305), (92, 14395), (101, 14440), (122, 14584), (126, 14620),

Gene: LasagnaCat_17 Start: 14000, Stop: 14614, Start Num: 9

Candidate Starts for LasagnaCat_17:

(Start: 9 @14000 has 420 MA's), (Start: 11 @14009 has 1 MA's), (19, 14042), (44, 14144), (76, 14291), (92, 14381), (101, 14426), (122, 14570), (126, 14606),

Gene: Lasso_17 Start: 13976, Stop: 14590, Start Num: 9

Candidate Starts for Lasso_17:

(Start: 9 @13976 has 420 MA's), (Start: 11 @13985 has 1 MA's), (19, 14018), (44, 14120), (76, 14267), (88, 14348), (92, 14357), (101, 14402), (122, 14546), (126, 14582),

Gene: LeeLot_17 Start: 13997, Stop: 14611, Start Num: 9

Candidate Starts for LeeLot_17:

(Start: 9 @13997 has 420 MA's), (Start: 11 @14006 has 1 MA's), (19, 14039), (44, 14141), (76, 14288), (92, 14378), (101, 14423), (126, 14603),

Gene: Lego3393_17 Start: 14013, Stop: 14627, Start Num: 9

Candidate Starts for Lego3393_17:

(Start: 9 @14013 has 420 MA's), (Start: 11 @14022 has 1 MA's), (19, 14055), (44, 14157), (76, 14304), (92, 14394), (101, 14439), (122, 14583), (126, 14619),

Gene: Legolas_16 Start: 13714, Stop: 14328, Start Num: 9

Candidate Starts for Legolas_16:

(Start: 9 @13714 has 420 MA's), (Start: 11 @13723 has 1 MA's), (19, 13756), (44, 13858), (76, 14005), (88, 14086), (92, 14095), (101, 14140), (126, 14320),

Gene: Lehmann_17 Start: 13541, Stop: 14155, Start Num: 9

Candidate Starts for Lehmann_17:

(Start: 9 @13541 has 420 MA's), (Start: 11 @13550 has 1 MA's), (19, 13583), (44, 13685), (76, 13832), (92, 13922), (101, 13967), (122, 14111), (126, 14147),

Gene: LeiMonet_17 Start: 13706, Stop: 14320, Start Num: 9

Candidate Starts for LeiMonet_17:

(Start: 9 @13706 has 420 MA's), (Start: 11 @13715 has 1 MA's), (19, 13748), (44, 13850), (76, 13997), (92, 14087), (101, 14132), (122, 14276), (126, 14312),

Gene: LemonSlice_17 Start: 13708, Stop: 14322, Start Num: 9

Candidate Starts for LemonSlice_17:

(Start: 9 @13708 has 420 MA's), (Start: 11 @13717 has 1 MA's), (19, 13750), (44, 13852), (76, 13999), (92, 14089), (101, 14134), (122, 14278), (126, 14314),

Gene: Lemuria_32 Start: 28819, Stop: 29400, Start Num: 8

Candidate Starts for Lemuria_32:

(Start: 8 @28819 has 10 MA's), (22, 28867), (25, 28879), (59, 29032), (71, 29104), (85, 29200), (90, 29221), (91, 29224),

Gene: Leopard_49 Start: 38220, Stop: 38792, Start Num: 15

Candidate Starts for Leopard_49:

(Start: 15 @38220 has 3 MA's), (28, 38268), (39, 38325), (51, 38373), (55, 38388), (58, 38400), (60, 38406), (61, 38418), (76, 38487), (85, 38550), (93, 38580), (95, 38586), (96, 38592),

Gene: Liefie_31 Start: 27105, Stop: 27722, Start Num: 9

Candidate Starts for Liefie_31:

(Start: 9 @27105 has 420 MA's), (22, 27153), (31, 27186), (34, 27195), (42, 27246), (49, 27279), (51, 27288), (54, 27300), (57, 27309), (74, 27411), (78, 27426), (82, 27468), (97, 27531),

Gene: LilHazelnut_36 Start: 30329, Stop: 30949, Start Num: 9

Candidate Starts for LilHazelnut_36:

(5, 30278), (Start: 9 @30329 has 420 MA's), (21, 30377), (36, 30431), (38, 30449), (51, 30515), (69, 30605), (74, 30638), (85, 30713), (89, 30731), (96, 30755), (99, 30776), (101, 30785), (106, 30821), (107, 30827), (118, 30905),

Gene: LilMcDreamy_17 Start: 16197, Stop: 16790, Start Num: 9

Candidate Starts for LilMcDreamy_17:

(Start: 9 @16197 has 420 MA's), (27, 16266), (44, 16341), (56, 16392), (59, 16404), (75, 16482), (96, 16593), (99, 16614), (100, 16617), (111, 16692), (116, 16725),

Gene: LittleDigger_16 Start: 14685, Stop: 15296, Start Num: 9

Candidate Starts for LittleDigger_16:

(Start: 9 @14685 has 420 MA's), (18, 14724), (23, 14739), (33, 14775), (38, 14805), (48, 14847), (58, 14889), (59, 14892), (71, 14943), (92, 15066), (102, 15117), (107, 15153), (108, 15162), (123, 15276),

Gene: Lolalove_17 Start: 15742, Stop: 16350, Start Num: 9

Candidate Starts for Lolalove_17:

(Start: 9 @15742 has 420 MA's), (18, 15781), (23, 15796), (33, 15832), (44, 15886), (48, 15904), (52, 15922), (58, 15946), (71, 16000), (92, 16123), (97, 16141), (102, 16174), (107, 16210), (123, 16330),

Gene: Longacauda_16 Start: 13700, Stop: 14314, Start Num: 9

Candidate Starts for Longacauda_16:

(Start: 9 @13700 has 420 MA's), (Start: 11 @13709 has 1 MA's), (19, 13742), (44, 13844), (76, 13991), (92, 14081), (101, 14126), (122, 14270), (126, 14306),

Gene: Lopsy_16 Start: 13565, Stop: 14170, Start Num: 11

Candidate Starts for Lopsy_16:

(Start: 9 @13556 has 420 MA's), (Start: 11 @13565 has 1 MA's), (19, 13598), (44, 13700), (76, 13847), (92, 13937), (101, 13982), (122, 14126), (126, 14162),

Gene: LostAndPhound_16 Start: 13710, Stop: 14324, Start Num: 9

Candidate Starts for LostAndPhound_16:

(Start: 9 @13710 has 420 MA's), (Start: 11 @13719 has 1 MA's), (19, 13752), (44, 13854), (76, 14001), (88, 14082), (92, 14091), (101, 14136), (122, 14280), (126, 14316),

Gene: LouisV14_31 Start: 27107, Stop: 27724, Start Num: 9

Candidate Starts for LouisV14_31:

(Start: 9 @27107 has 420 MA's), (22, 27155), (31, 27188), (34, 27197), (38, 27224), (42, 27248), (49, 27281), (51, 27290), (54, 27302), (57, 27311), (74, 27413), (78, 27428), (82, 27470), (97, 27533), (111, 27635),

Gene: LuckyMarjie_16 Start: 13722, Stop: 14336, Start Num: 9

Candidate Starts for LuckyMarjie_16:

(Start: 9 @13722 has 420 MA's), (Start: 11 @13731 has 1 MA's), (19, 13764), (44, 13866), (76, 14013), (92, 14103), (101, 14148), (122, 14292), (126, 14328),

Gene: Luke_36 Start: 30284, Stop: 30904, Start Num: 9

Candidate Starts for Luke_36:

(5, 30233), (Start: 9 @30284 has 420 MA's), (21, 30332), (36, 30386), (38, 30404), (51, 30470), (69, 30560), (74, 30593), (85, 30668), (89, 30686), (96, 30710), (99, 30731), (101, 30740), (106, 30776), (107, 30782), (118, 30860),

Gene: Lulumae_16 Start: 13699, Stop: 14313, Start Num: 9

Candidate Starts for Lulumae_16:

(Start: 9 @13699 has 420 MA's), (Start: 11 @13708 has 1 MA's), (19, 13741), (44, 13843), (76, 13990), (88, 14071), (92, 14080), (101, 14125), (126, 14305),

Gene: Lulwa_17 Start: 13988, Stop: 14602, Start Num: 9

Candidate Starts for Lulwa_17:

(Start: 9 @13988 has 420 MA's), (Start: 11 @13997 has 1 MA's), (19, 14030), (44, 14132), (76, 14279), (88, 14360), (92, 14369), (101, 14414), (122, 14558), (126, 14594),

Gene: Lumine_16 Start: 13692, Stop: 14306, Start Num: 9

Candidate Starts for Lumine_16:

(Start: 9 @13692 has 420 MA's), (Start: 11 @13701 has 1 MA's), (19, 13734), (44, 13836), (76, 13983), (88, 14064), (92, 14073), (101, 14118), (126, 14298),

Gene: Luna22_35 Start: 30329, Stop: 30949, Start Num: 9

Candidate Starts for Luna22_35:

(5, 30278), (Start: 9 @30329 has 420 MA's), (21, 30377), (36, 30431), (38, 30449), (51, 30515), (69, 30605), (74, 30638), (85, 30713), (89, 30731), (96, 30755), (99, 30776), (101, 30785), (106, 30821), (107, 30827), (118, 30905),

Gene: MOOREtheMARYer_32 Start: 29110, Stop: 29769, Start Num: 8

Candidate Starts for MOOREtheMARYer_32:

(Start: 8 @29110 has 10 MA's), (Start: 11 @29122 has 1 MA's), (14, 29137), (18, 29152), (22, 29164), (51, 29299), (101, 29593), (107, 29635),

Gene: MRabcd_16 Start: 13701, Stop: 14315, Start Num: 9

Candidate Starts for MRabcd_16:

(Start: 9 @13701 has 420 MA's), (Start: 11 @13710 has 1 MA's), (19, 13743), (44, 13845), (76, 13992), (92, 14082), (101, 14127), (122, 14271), (126, 14307),

Gene: MZKinsey_31 Start: 27107, Stop: 27724, Start Num: 9

Candidate Starts for MZKinsey_31:

(Start: 9 @27107 has 420 MA's), (22, 27155), (31, 27188), (34, 27197), (38, 27224), (42, 27248), (49, 27281), (51, 27290), (54, 27302), (57, 27311), (74, 27413), (78, 27428), (82, 27470), (97, 27533), (111, 27635),

Gene: Mag7_16 Start: 13556, Stop: 14170, Start Num: 9

Candidate Starts for Mag7_16:

(Start: 9 @13556 has 420 MA's), (Start: 11 @13565 has 1 MA's), (19, 13598), (44, 13700), (76, 13847), (92, 13937), (101, 13982), (122, 14126), (126, 14162),

Gene: Magic8_17 Start: 13994, Stop: 14608, Start Num: 9

Candidate Starts for Magic8_17:

(Start: 9 @13994 has 420 MA's), (Start: 11 @14003 has 1 MA's), (19, 14036), (44, 14138), (76, 14285), (92, 14375), (101, 14420), (122, 14564), (126, 14600),

Gene: Magpie_17 Start: 15930, Stop: 16541, Start Num: 9

Candidate Starts for Magpie_17:

(Start: 9 @15930 has 420 MA's), (18, 15969), (23, 15984), (29, 16005), (33, 16020), (44, 16074), (48, 16092), (52, 16110), (58, 16134), (59, 16137), (92, 16311), (102, 16362), (123, 16521),

Gene: Maliketh_31 Start: 27107, Stop: 27724, Start Num: 9

Candidate Starts for Maliketh_31:

(Start: 9 @27107 has 420 MA's), (22, 27155), (31, 27188), (34, 27197), (38, 27224), (42, 27248), (49, 27281), (51, 27290), (54, 27302), (57, 27311), (74, 27413), (78, 27428), (82, 27470), (97, 27533), (111, 27635),

Gene: Mana_16 Start: 13704, Stop: 14318, Start Num: 9

Candidate Starts for Mana_16:

(Start: 9 @13704 has 420 MA's), (Start: 11 @13713 has 1 MA's), (19, 13746), (44, 13848), (76, 13995), (92, 14085), (101, 14130), (122, 14274), (126, 14310),

Gene: Manad_16 Start: 13554, Stop: 14168, Start Num: 9

Candidate Starts for Manad_16:

(Start: 9 @13554 has 420 MA's), (Start: 11 @13563 has 1 MA's), (19, 13596), (44, 13698), (76, 13845), (88, 13926), (92, 13935), (101, 13980), (122, 14124), (126, 14160),

Gene: Marmie_31 Start: 27107, Stop: 27724, Start Num: 9

Candidate Starts for Marmie_31:

(Start: 9 @27107 has 420 MA's), (22, 27155), (31, 27188), (34, 27197), (38, 27224), (42, 27248), (49, 27281), (51, 27290), (54, 27302), (57, 27311), (74, 27413), (78, 27428), (82, 27470), (97, 27533), (111, 27635),

Gene: Maru_16 Start: 13702, Stop: 14316, Start Num: 9

Candidate Starts for Maru_16:

(Start: 9 @13702 has 420 MA's), (Start: 11 @13711 has 1 MA's), (19, 13744), (44, 13846), (76, 13993), (92, 14083), (101, 14128), (122, 14272), (126, 14308),

Gene: Maskar_16 Start: 13544, Stop: 14158, Start Num: 9

Candidate Starts for Maskar_16:

(Start: 9 @13544 has 420 MA's), (Start: 11 @13553 has 1 MA's), (19, 13586), (44, 13688), (76, 13835), (92, 13925), (101, 13970), (122, 14114), (126, 14150),

Gene: Matalotodo_17 Start: 13992, Stop: 14468, Start Num: 9

Candidate Starts for Matalotodo_17:

(Start: 9 @13992 has 420 MA's), (Start: 11 @14001 has 1 MA's), (19, 14034), (44, 14136), (76, 14283), (88, 14364), (92, 14373), (101, 14418),

Gene: Mcshane_16 Start: 13698, Stop: 14312, Start Num: 9

Candidate Starts for Mcshane_16:

(Start: 9 @13698 has 420 MA's), (Start: 11 @13707 has 1 MA's), (19, 13740), (44, 13842), (76, 13989), (92, 14079), (101, 14124), (122, 14268), (126, 14304),

Gene: Mecca_16 Start: 13695, Stop: 14309, Start Num: 9

Candidate Starts for Mecca_16:

(Start: 9 @13695 has 420 MA's), (Start: 11 @13704 has 1 MA's), (19, 13737), (44, 13839), (76, 13986), (92, 14076), (101, 14121), (122, 14265), (126, 14301),

Gene: Megamind20_17 Start: 13717, Stop: 14331, Start Num: 9

Candidate Starts for Megamind20_17:

(Start: 9 @13717 has 420 MA's), (Start: 11 @13726 has 1 MA's), (19, 13759), (44, 13861), (76, 14008), (88, 14089), (92, 14098), (101, 14143), (122, 14287), (126, 14323),

Gene: Megatron_17 Start: 13997, Stop: 14611, Start Num: 9

Candidate Starts for Megatron_17:

(Start: 9 @13997 has 420 MA's), (Start: 11 @14006 has 1 MA's), (19, 14039), (44, 14141), (76, 14288), (92, 14378), (101, 14423), (122, 14567), (126, 14603),

Gene: Melc17_17 Start: 13988, Stop: 14602, Start Num: 9

Candidate Starts for Melc17_17:

(Start: 9 @13988 has 420 MA's), (Start: 11 @13997 has 1 MA's), (19, 14030), (44, 14132), (76, 14279), (92, 14369), (101, 14414), (126, 14594),

Gene: MelsMeow_16 Start: 13556, Stop: 14170, Start Num: 9

Candidate Starts for MelsMeow_16:

(Start: 9 @13556 has 420 MA's), (Start: 11 @13565 has 1 MA's), (19, 13598), (44, 13700), (76, 13847), (88, 13928), (92, 13937), (101, 13982), (126, 14162),

Gene: Mercurio_33 Start: 29310, Stop: 29912, Start Num: 8

Candidate Starts for Mercurio_33:

(Start: 8 @29310 has 10 MA's), (25, 29370), (34, 29400), (71, 29616), (90, 29733), (91, 29736), (112, 29832),

Gene: Mesh1_17 Start: 14006, Stop: 14620, Start Num: 9

Candidate Starts for Mesh1_17:

(Start: 9 @14006 has 420 MA's), (Start: 11 @14015 has 1 MA's), (19, 14048), (44, 14150), (76, 14297), (92, 14387), (101, 14432), (122, 14576), (126, 14612),

Gene: Mesmerelda_16 Start: 13698, Stop: 14312, Start Num: 9

Candidate Starts for Mesmerelda_16:

(Start: 9 @13698 has 420 MA's), (Start: 11 @13707 has 1 MA's), (19, 13740), (44, 13842), (76, 13989), (92, 14079), (101, 14124), (122, 14268), (126, 14304),

Gene: MichaelPhcott_16 Start: 13556, Stop: 14170, Start Num: 9

Candidate Starts for MichaelPhcott_16:

(Start: 9 @13556 has 420 MA's), (Start: 11 @13565 has 1 MA's), (19, 13598), (44, 13700), (76, 13847), (92, 13937), (101, 13982), (122, 14126), (126, 14162),

Gene: Mikota_17 Start: 13983, Stop: 14597, Start Num: 9

Candidate Starts for Mikota_17:

(Start: 9 @13983 has 420 MA's), (Start: 11 @13992 has 1 MA's), (19, 14025), (44, 14127), (76, 14274), (88, 14355), (92, 14364), (101, 14409), (122, 14553), (126, 14589),

Gene: MiniBoss_17 Start: 13985, Stop: 14599, Start Num: 9

Candidate Starts for MiniBoss_17:

(Start: 9 @13985 has 420 MA's), (Start: 11 @13994 has 1 MA's), (19, 14027), (44, 14129), (76, 14276), (88, 14357), (92, 14366), (101, 14411), (122, 14555), (126, 14591),

Gene: MitKao_17 Start: 13704, Stop: 14318, Start Num: 9

Candidate Starts for MitKao_17:

(Start: 9 @13704 has 420 MA's), (Start: 11 @13713 has 1 MA's), (19, 13746), (44, 13848), (76, 13995), (92, 14085), (101, 14130), (122, 14274), (126, 14310),

Gene: Mithril_17 Start: 15745, Stop: 16356, Start Num: 9

Candidate Starts for Mithril_17:

(Start: 9 @15745 has 420 MA's), (18, 15784), (23, 15799), (33, 15835), (44, 15889), (48, 15907), (52, 15925), (58, 15949), (71, 16003), (92, 16126), (102, 16177), (107, 16213), (123, 16336),

Gene: Morgushi_17 Start: 13708, Stop: 14322, Start Num: 9

Candidate Starts for Morgushi_17:

(Start: 9 @13708 has 420 MA's), (Start: 11 @13717 has 1 MA's), (19, 13750), (44, 13852), (76, 13999), (88, 14080), (92, 14089), (101, 14134), (126, 14314),

Gene: Morty_17 Start: 14006, Stop: 14620, Start Num: 9

Candidate Starts for Morty_17:

(Start: 9 @14006 has 420 MA's), (Start: 11 @14015 has 1 MA's), (19, 14048), (44, 14150), (76, 14297), (92, 14387), (101, 14432), (122, 14576), (126, 14612),

Gene: Mosaic_16 Start: 13711, Stop: 14325, Start Num: 9

Candidate Starts for Mosaic_16:

(Start: 9 @13711 has 420 MA's), (Start: 11 @13720 has 1 MA's), (19, 13753), (44, 13855), (76, 14002), (88, 14083), (92, 14092), (101, 14137), (122, 14281), (126, 14317),

Gene: Mowgli_31 Start: 27107, Stop: 27724, Start Num: 9

Candidate Starts for Mowgli_31:

(Start: 9 @27107 has 420 MA's), (22, 27155), (31, 27188), (34, 27197), (38, 27224), (42, 27248), (49, 27281), (51, 27290), (54, 27302), (57, 27311), (74, 27413), (78, 27428), (82, 27470), (97, 27533), (111, 27635),

Gene: MrPhizzler_17 Start: 13709, Stop: 14323, Start Num: 9

Candidate Starts for MrPhizzler_17:

(Start: 9 @13709 has 420 MA's), (Start: 11 @13718 has 1 MA's), (19, 13751), (44, 13853), (76, 14000), (88, 14081), (92, 14090), (101, 14135), (126, 14315),

Gene: Mudslide_17 Start: 15990, Stop: 16601, Start Num: 9

Candidate Starts for Mudslide_17:

(Start: 9 @15990 has 420 MA's), (18, 16029), (23, 16044), (29, 16065), (33, 16080), (44, 16134), (48, 16152), (52, 16170), (58, 16194), (59, 16197), (92, 16371), (102, 16422), (123, 16581),

Gene: Mulan_16 Start: 13704, Stop: 14318, Start Num: 9

Candidate Starts for Mulan_16:

(Start: 9 @13704 has 420 MA's), (Start: 11 @13713 has 1 MA's), (19, 13746), (44, 13848), (76, 13995), (92, 14085), (101, 14130), (122, 14274), (126, 14310),

Gene: Murdoc_17 Start: 13997, Stop: 14611, Start Num: 9

Candidate Starts for Murdoc_17:

(Start: 9 @13997 has 420 MA's), (Start: 11 @14006 has 1 MA's), (19, 14039), (44, 14141), (76, 14288), (92, 14378), (101, 14423), (126, 14603),

Gene: Mutante_16 Start: 13707, Stop: 14321, Start Num: 9

Candidate Starts for Mutante_16:

(Start: 9 @13707 has 420 MA's), (Start: 11 @13716 has 1 MA's), (19, 13749), (44, 13851), (76, 13998), (88, 14079), (92, 14088), (101, 14133), (122, 14277), (126, 14313),

Gene: Mysterious_18 Start: 15841, Stop: 16440, Start Num: 9

Candidate Starts for Mysterious_18:

(Start: 9 @15841 has 420 MA's), (Start: 11 @15850 has 1 MA's), (16, 15871), (22, 15892), (23, 15895), (27, 15910), (48, 16003), (55, 16033), (58, 16045), (59, 16048), (71, 16099), (76, 16132), (84, 16192), (107, 16309), (124, 16432),

Gene: Nacho_0017 Start: 13997, Stop: 14611, Start Num: 9

Candidate Starts for Nacho_0017:

(Start: 9 @13997 has 420 MA's), (Start: 11 @14006 has 1 MA's), (19, 14039), (44, 14141), (76, 14288), (92, 14378), (101, 14423), (122, 14567), (126, 14603),

Gene: Nanao_16 Start: 14677, Stop: 15288, Start Num: 9

Candidate Starts for Nanao_16:

(Start: 9 @14677 has 420 MA's), (18, 14716), (23, 14731), (33, 14767), (48, 14839), (52, 14857), (58, 14881), (59, 14884), (71, 14935), (92, 15058), (102, 15109), (107, 15145), (108, 15154), (123, 15268),

Gene: Nangang_18 Start: 15565, Stop: 16164, Start Num: 9

Candidate Starts for Nangang_18:

(Start: 9 @15565 has 420 MA's), (Start: 11 @15574 has 1 MA's), (16, 15595), (27, 15634), (52, 15745), (55, 15757), (58, 15769), (59, 15772), (71, 15823), (84, 15916), (107, 16033), (124, 16156),

Gene: Nathan_17 Start: 14007, Stop: 14621, Start Num: 9

Candidate Starts for Nathan_17:

(Start: 9 @14007 has 420 MA's), (Start: 11 @14016 has 1 MA's), (19, 14049), (44, 14151), (76, 14298), (92, 14388), (101, 14433), (122, 14577), (126, 14613),

Gene: Nehemiah_17 Start: 15850, Stop: 16440, Start Num: 11

Candidate Starts for Nehemiah_17:

(Start: 9 @15841 has 420 MA's), (Start: 11 @15850 has 1 MA's), (16, 15871), (22, 15892), (23, 15895), (27, 15910), (48, 16003), (55, 16033), (58, 16045), (59, 16048), (71, 16099), (76, 16132), (84, 16192), (92, 16222), (107, 16309), (124, 16432),

Gene: Neoh_31 Start: 27099, Stop: 27716, Start Num: 9

Candidate Starts for Neoh_31:

(Start: 9 @27099 has 420 MA's), (22, 27147), (31, 27180), (34, 27189), (38, 27216), (42, 27240), (49, 27273), (51, 27282), (54, 27294), (57, 27303), (74, 27405), (78, 27420), (82, 27462), (97, 27525), (111, 27627),

Gene: Newman_17 Start: 13997, Stop: 14611, Start Num: 9

Candidate Starts for Newman_17:

(Start: 9 @13997 has 420 MA's), (Start: 11 @14006 has 1 MA's), (19, 14039), (44, 14141), (76, 14288), (92, 14378), (101, 14423), (122, 14567), (126, 14603),

Gene: NiaNia_17 Start: 13731, Stop: 14336, Start Num: 11

Candidate Starts for NiaNia_17:

(Start: 9 @13722 has 420 MA's), (Start: 11 @13731 has 1 MA's), (19, 13764), (44, 13866), (76, 14013), (92, 14103), (101, 14148), (122, 14292), (126, 14328),

Gene: Nicole21_17 Start: 13989, Stop: 14603, Start Num: 9

Candidate Starts for Nicole21_17:

(Start: 9 @13989 has 420 MA's), (Start: 11 @13998 has 1 MA's), (19, 14031), (44, 14133), (76, 14280), (92, 14370), (101, 14415), (122, 14559), (126, 14595),

Gene: Nigel_15 Start: 14594, Stop: 15205, Start Num: 9

Candidate Starts for Nigel_15:

(Start: 9 @14594 has 420 MA's), (18, 14633), (23, 14648), (29, 14669), (33, 14684), (38, 14714), (44, 14738), (48, 14756), (52, 14774), (58, 14798), (71, 14852), (107, 15062), (108, 15071), (123, 15185), (125, 15188),

Gene: Nova1_16 Start: 13570, Stop: 14184, Start Num: 9

Candidate Starts for Nova1_16:

(Start: 9 @13570 has 420 MA's), (Start: 11 @13579 has 1 MA's), (19, 13612), (44, 13714), (76, 13861), (88, 13942), (92, 13951), (101, 13996), (126, 14176),

Gene: NovoPizza_31 Start: 30041, Stop: 30670, Start Num: 7

Candidate Starts for NovoPizza_31:

(Start: 7 @30041 has 1 MA's), (Start: 9 @30050 has 420 MA's), (19, 30092), (22, 30101), (29, 30125), (45, 30206), (59, 30266), (65, 30305), (71, 30338), (80, 30389), (82, 30416), (85, 30434), (101, 30506), (114, 30602),

Gene: Numberten_17 Start: 14000, Stop: 14614, Start Num: 9

Candidate Starts for Numberten_17:

(Start: 9 @14000 has 420 MA's), (Start: 11 @14009 has 1 MA's), (19, 14042), (44, 14144), (76, 14291), (88, 14372), (92, 14381), (101, 14426), (122, 14570), (126, 14606),

Gene: Nyala_16 Start: 13699, Stop: 14313, Start Num: 9

Candidate Starts for Nyala_16:

(Start: 9 @13699 has 420 MA's), (Start: 11 @13708 has 1 MA's), (19, 13741), (44, 13843), (76, 13990), (92, 14080), (101, 14125), (122, 14269), (126, 14305),

Gene: OBUpride_36 Start: 30323, Stop: 30943, Start Num: 9

Candidate Starts for OBUpride_36:

(5, 30272), (Start: 9 @30323 has 420 MA's), (21, 30371), (36, 30425), (38, 30443), (51, 30509), (69, 30599), (74, 30632), (85, 30707), (89, 30725), (96, 30749), (99, 30770), (101, 30779), (106, 30815), (107, 30821), (118, 30899),

Gene: OSmaximus_17 Start: 14007, Stop: 14621, Start Num: 9

Candidate Starts for OSmaximus_17:

(Start: 9 @14007 has 420 MA's), (Start: 11 @14016 has 1 MA's), (19, 14049), (44, 14151), (76, 14298), (92, 14388), (101, 14433), (122, 14577), (126, 14613),

Gene: OctaviousRex_31 Start: 27107, Stop: 27724, Start Num: 9

Candidate Starts for OctaviousRex_31:

(Start: 9 @27107 has 420 MA's), (22, 27155), (31, 27188), (34, 27197), (38, 27224), (42, 27248), (49, 27281), (51, 27290), (54, 27302), (57, 27311), (74, 27413), (78, 27428), (82, 27470), (97, 27533), (111, 27635),

Gene: Olak_16 Start: 13696, Stop: 14310, Start Num: 9

Candidate Starts for Olak_16:

(Start: 9 @13696 has 420 MA's), (Start: 11 @13705 has 1 MA's), (19, 13738), (44, 13840), (76, 13987), (92, 14077), (101, 14122), (122, 14266), (126, 14302),

Gene: Olga_31 Start: 27107, Stop: 27724, Start Num: 9

Candidate Starts for Olga_31:

(Start: 9 @27107 has 420 MA's), (22, 27155), (31, 27188), (34, 27197), (38, 27224), (42, 27248), (49, 27281), (51, 27290), (54, 27302), (57, 27311), (74, 27413), (78, 27428), (82, 27470), (97, 27533), (111, 27635),

Gene: Oline_16 Start: 13556, Stop: 14170, Start Num: 9

Candidate Starts for Oline_16:

(Start: 9 @13556 has 420 MA's), (Start: 11 @13565 has 1 MA's), (19, 13598), (44, 13700), (76, 13847), (92, 13937), (101, 13982), (122, 14126), (126, 14162),

Gene: Olive_17 Start: 13988, Stop: 14602, Start Num: 9

Candidate Starts for Olive_17:

(Start: 9 @13988 has 420 MA's), (Start: 11 @13997 has 1 MA's), (19, 14030), (44, 14132), (76, 14279), (88, 14360), (92, 14369), (101, 14414), (126, 14594),

Gene: OliverWalter_17 Start: 14005, Stop: 14619, Start Num: 9

Candidate Starts for OliverWalter_17:

(Start: 9 @14005 has 420 MA's), (Start: 11 @14014 has 1 MA's), (19, 14047), (44, 14149), (76, 14296), (88, 14377), (92, 14386), (101, 14431), (122, 14575), (126, 14611),

Gene: Omniscient_17 Start: 14006, Stop: 14620, Start Num: 9

Candidate Starts for Omniscient_17:

(Start: 9 @14006 has 420 MA's), (Start: 11 @14015 has 1 MA's), (19, 14048), (44, 14150), (76, 14297), (92, 14387), (101, 14432), (122, 14576), (126, 14612),

Gene: OneBrain_17 Start: 13700, Stop: 14314, Start Num: 9

Candidate Starts for OneBrain_17:

(Start: 9 @13700 has 420 MA's), (Start: 11 @13709 has 1 MA's), (19, 13742), (44, 13844), (76, 13991), (92, 14081), (101, 14126), (122, 14270), (126, 14306),

Gene: Onyinye_50 Start: 38102, Stop: 38674, Start Num: 15

Candidate Starts for Onyinye_50:

(Start: 15 @38102 has 3 MA's), (28, 38150), (39, 38207), (51, 38255), (52, 38258), (55, 38270), (58, 38282), (60, 38288), (61, 38300), (76, 38369), (85, 38432), (93, 38462), (95, 38468), (96, 38474),

Gene: Oosterbaan_17 Start: 13998, Stop: 14612, Start Num: 9

Candidate Starts for Oosterbaan_17:

(Start: 9 @13998 has 420 MA's), (Start: 11 @14007 has 1 MA's), (19, 14040), (44, 14142), (76, 14289), (88, 14370), (92, 14379), (101, 14424), (126, 14604),

Gene: Orfeu_16 Start: 13697, Stop: 14311, Start Num: 9

Candidate Starts for Orfeu_16:

(Start: 9 @13697 has 420 MA's), (Start: 11 @13706 has 1 MA's), (19, 13739), (44, 13841), (76, 13988), (92, 14078), (101, 14123), (122, 14267), (126, 14303),

Gene: Orion_17 Start: 13998, Stop: 14612, Start Num: 9

Candidate Starts for Orion_17:

(Start: 9 @13998 has 420 MA's), (Start: 11 @14007 has 1 MA's), (19, 14040), (44, 14142), (76, 14289), (92, 14379), (101, 14424), (122, 14568), (126, 14604),

Gene: Orwigg_16 Start: 13690, Stop: 14304, Start Num: 9

Candidate Starts for Orwigg_16:

(Start: 9 @13690 has 420 MA's), (Start: 11 @13699 has 1 MA's), (19, 13732), (44, 13834), (76, 13981), (92, 14071), (101, 14116), (122, 14260), (126, 14296),

Gene: PG1_17 Start: 14010, Stop: 14624, Start Num: 9

Candidate Starts for PG1_17:

(Start: 9 @14010 has 420 MA's), (Start: 11 @14019 has 1 MA's), (19, 14052), (44, 14154), (76, 14301), (92, 14391), (101, 14436), (122, 14580), (126, 14616),

Gene: Pace1224_30 Start: 28613, Stop: 29269, Start Num: 8

Candidate Starts for Pace1224_30:

(6, 28592), (Start: 8 @28613 has 10 MA's), (Start: 11 @28622 has 1 MA's), (22, 28664), (31, 28697), (38, 28733), (45, 28769), (51, 28799), (59, 28829), (99, 29084), (106, 29129), (107, 29135),

Gene: Pacifista_16 Start: 13701, Stop: 14315, Start Num: 9

Candidate Starts for Pacifista_16:

(Start: 9 @13701 has 420 MA's), (Start: 11 @13710 has 1 MA's), (19, 13743), (44, 13845), (76, 13992), (92, 14082), (101, 14127), (122, 14271), (126, 14307),

Gene: Paito_31 Start: 27329, Stop: 27949, Start Num: 8

Candidate Starts for Paito_31:

(Start: 8 @27329 has 10 MA's), (21, 27377), (31, 27413), (32, 27416), (34, 27422), (42, 27473), (49, 27506), (54, 27527), (59, 27545), (85, 27713), (97, 27758), (114, 27881),

Gene: PallasAthena_17 Start: 13705, Stop: 14319, Start Num: 9

Candidate Starts for PallasAthena_17:

(Start: 9 @13705 has 420 MA's), (Start: 11 @13714 has 1 MA's), (19, 13747), (44, 13849), (76, 13996), (92, 14086), (101, 14131), (122, 14275), (126, 14311),

Gene: Peeb_31 Start: 27107, Stop: 27724, Start Num: 9

Candidate Starts for Peeb_31:

(Start: 9 @27107 has 420 MA's), (22, 27155), (31, 27188), (34, 27197), (42, 27248), (49, 27281), (54, 27302), (57, 27311), (74, 27413), (78, 27428), (82, 27470), (97, 27533), (111, 27635),

Gene: PenguinLover67_20 Start: 16988, Stop: 17584, Start Num: 9

Candidate Starts for PenguinLover67_20:

(Start: 9 @16988 has 420 MA's), (Start: 11 @16997 has 1 MA's), (27, 17057), (49, 17156), (71, 17246), (104, 17435), (107, 17456),

Gene: Periodt_31 Start: 27098, Stop: 27715, Start Num: 9

Candidate Starts for Periodt_31:

(Start: 9 @27098 has 420 MA's), (22, 27146), (31, 27179), (34, 27188), (42, 27239), (49, 27272), (51, 27281), (54, 27293), (57, 27302), (74, 27404), (78, 27419), (82, 27461), (97, 27524),

Gene: Phamished_17 Start: 14003, Stop: 14617, Start Num: 9

Candidate Starts for Phamished_17:

(Start: 9 @14003 has 420 MA's), (Start: 11 @14012 has 1 MA's), (19, 14045), (44, 14147), (76, 14294), (92, 14384), (101, 14429), (122, 14573), (126, 14609),

Gene: Phareon_17 Start: 13704, Stop: 14318, Start Num: 9

Candidate Starts for Phareon_17:

(Start: 9 @13704 has 420 MA's), (Start: 11 @13713 has 1 MA's), (19, 13746), (44, 13848), (76, 13995), (92, 14085), (101, 14130), (122, 14274), (126, 14310),

Gene: PhatCats2014_17 Start: 14013, Stop: 14627, Start Num: 9

Candidate Starts for PhatCats2014_17:

(Start: 9 @14013 has 420 MA's), (Start: 11 @14022 has 1 MA's), (19, 14055), (44, 14157), (76, 14304), (92, 14394), (101, 14439), (122, 14583), (126, 14619),

Gene: PhatLouie_17 Start: 13997, Stop: 14611, Start Num: 9

Candidate Starts for PhatLouie_17:

(Start: 9 @13997 has 420 MA's), (Start: 11 @14006 has 1 MA's), (19, 14039), (44, 14141), (76, 14288), (88, 14369), (92, 14378), (101, 14423), (126, 14603),

Gene: Phelemich_18 Start: 15845, Stop: 16444, Start Num: 9

Candidate Starts for Phelemich_18:

(Start: 9 @15845 has 420 MA's), (Start: 11 @15854 has 1 MA's), (22, 15896), (23, 15899), (27, 15914), (48, 16007), (55, 16037), (58, 16049), (59, 16052), (71, 16103), (76, 16136), (84, 16196), (107, 16313), (124, 16436),

Gene: PhenghisKhan_16 Start: 13556, Stop: 14170, Start Num: 9

Candidate Starts for PhenghisKhan_16:

(Start: 9 @13556 has 420 MA's), (Start: 11 @13565 has 1 MA's), (19, 13598), (44, 13700), (76, 13847), (92, 13937), (101, 13982), (122, 14126), (126, 14162),

Gene: Pherdinand_17 Start: 14001, Stop: 14615, Start Num: 9

Candidate Starts for Pherdinand_17:

(Start: 9 @14001 has 420 MA's), (Start: 11 @14010 has 1 MA's), (19, 14043), (44, 14145), (76, 14292), (92, 14382), (101, 14427), (122, 14571), (126, 14607),

Gene: Phergie_16 Start: 13550, Stop: 14164, Start Num: 9

Candidate Starts for Phergie_16:

(Start: 9 @13550 has 420 MA's), (Start: 11 @13559 has 1 MA's), (19, 13592), (44, 13694), (76, 13841), (92, 13931), (101, 13976), (122, 14120), (126, 14156),

Gene: Phipps_17 Start: 13976, Stop: 14590, Start Num: 9

Candidate Starts for Phipps_17:

(Start: 9 @13976 has 420 MA's), (Start: 11 @13985 has 1 MA's), (19, 14018), (44, 14120), (76, 14267), (88, 14348), (92, 14357), (101, 14402), (126, 14582),

Gene: Phish_31 Start: 27107, Stop: 27724, Start Num: 9

Candidate Starts for Phish_31:

(Start: 9 @27107 has 420 MA's), (22, 27155), (31, 27188), (34, 27197), (38, 27224), (42, 27248), (49, 27281), (51, 27290), (54, 27302), (57, 27311), (74, 27413), (78, 27428), (82, 27470), (97, 27533), (111, 27635),

Gene: Phleuron_16 Start: 13556, Stop: 14170, Start Num: 9

Candidate Starts for Phleuron_16:

(Start: 9 @13556 has 420 MA's), (Start: 11 @13565 has 1 MA's), (19, 13598), (44, 13700), (76, 13847), (92, 13937), (101, 13982), (122, 14126), (126, 14162),

Gene: Phloodle_31 Start: 27107, Stop: 27724, Start Num: 9

Candidate Starts for Phloodle_31:

(Start: 9 @27107 has 420 MA's), (22, 27155), (31, 27188), (34, 27197), (42, 27248), (49, 27281), (51, 27290), (54, 27302), (57, 27311), (74, 27413), (78, 27428), (82, 27470), (97, 27533),

Gene: PhrankReynolds_16 Start: 13556, Stop: 14170, Start Num: 9

Candidate Starts for PhrankReynolds_16:

(Start: 9 @13556 has 420 MA's), (Start: 11 @13565 has 1 MA's), (19, 13598), (44, 13700), (76, 13847), (92, 13937), (101, 13982), (122, 14126), (126, 14162),

Gene: Phreak_31 Start: 27107, Stop: 27724, Start Num: 9

Candidate Starts for Phreak_31:

(Start: 9 @27107 has 420 MA's), (22, 27155), (31, 27188), (34, 27197), (38, 27224), (42, 27248), (49, 27281), (51, 27290), (54, 27302), (57, 27311), (74, 27413), (78, 27428), (82, 27470), (97, 27533), (111, 27635),

Gene: PhrodoBaggins_16 Start: 13991, Stop: 14605, Start Num: 9

Candidate Starts for PhrodoBaggins_16:

(Start: 9 @13991 has 420 MA's), (Start: 11 @14000 has 1 MA's), (19, 14033), (44, 14135), (76, 14282), (88, 14363), (92, 14372), (101, 14417), (122, 14561), (126, 14597),

Gene: Phunky_17 Start: 13997, Stop: 14611, Start Num: 9

Candidate Starts for Phunky_17:

(Start: 9 @13997 has 420 MA's), (Start: 11 @14006 has 1 MA's), (19, 14039), (44, 14141), (76, 14288), (88, 14369), (92, 14378), (101, 14423), (122, 14567), (126, 14603),

Gene: Piglet_0016 Start: 14000, Stop: 14614, Start Num: 9

Candidate Starts for Piglet_0016:

(Start: 9 @14000 has 420 MA's), (Start: 11 @14009 has 1 MA's), (19, 14042), (44, 14144), (76, 14291), (92, 14381), (101, 14426), (122, 14570), (126, 14606),

Gene: PinheadLarry_17 Start: 13716, Stop: 14330, Start Num: 9

Candidate Starts for PinheadLarry_17:

(Start: 9 @13716 has 420 MA's), (Start: 11 @13725 has 1 MA's), (19, 13758), (44, 13860), (76, 14007), (88, 14088), (92, 14097), (101, 14142), (126, 14322),

Gene: PinkYoshi_31 Start: 27098, Stop: 27715, Start Num: 9

Candidate Starts for PinkYoshi_31:

(Start: 9 @27098 has 420 MA's), (22, 27146), (31, 27179), (34, 27188), (38, 27215), (42, 27239), (49, 27272), (51, 27281), (54, 27293), (57, 27302), (74, 27404), (78, 27419), (82, 27461), (97, 27524), (111, 27626),

Gene: Pinkman_16 Start: 13556, Stop: 14170, Start Num: 9

Candidate Starts for Pinkman_16:

(Start: 9 @13556 has 420 MA's), (Start: 11 @13565 has 1 MA's), (19, 13598), (44, 13700), (76, 13847), (92, 13937), (101, 13982), (122, 14126), (126, 14162),

Gene: Pinnie_32 Start: 29481, Stop: 30140, Start Num: 8

Candidate Starts for Pinnie_32:

(Start: 8 @29481 has 10 MA's), (Start: 11 @29493 has 1 MA's), (18, 29523), (31, 29568), (38, 29604), (53, 29679), (107, 30006),

Gene: Pipsqueak_17 Start: 14003, Stop: 14617, Start Num: 9

Candidate Starts for Pipsqueak_17:

(Start: 9 @14003 has 420 MA's), (Start: 11 @14012 has 1 MA's), (19, 14045), (44, 14147), (76, 14294), (88, 14375), (92, 14384), (101, 14429), (126, 14609),

Gene: Placalicious_16 Start: 13698, Stop: 14312, Start Num: 9

Candidate Starts for Placalicious_16:

(Start: 9 @13698 has 420 MA's), (Start: 11 @13707 has 1 MA's), (19, 13740), (44, 13842), (76, 13989), (92, 14079), (101, 14124), (122, 14268), (126, 14304),

Gene: Plagueis_31 Start: 26942, Stop: 27559, Start Num: 9

Candidate Starts for Plagueis_31:

(Start: 9 @26942 has 420 MA's), (22, 26990), (31, 27023), (34, 27032), (38, 27059), (42, 27083), (49, 27116), (51, 27125), (54, 27137), (57, 27146), (74, 27248), (78, 27263), (82, 27305), (97, 27368), (111, 27470),

Gene: Plata_16 Start: 13712, Stop: 14326, Start Num: 9

Candidate Starts for Plata_16:

(Start: 9 @13712 has 420 MA's), (Start: 11 @13721 has 1 MA's), (19, 13754), (44, 13856), (76, 14003), (88, 14084), (92, 14093), (101, 14138), (126, 14318),

Gene: Plmatters_17 Start: 13997, Stop: 14611, Start Num: 9

Candidate Starts for Plmatters_17:

(Start: 9 @13997 has 420 MA's), (Start: 11 @14006 has 1 MA's), (19, 14039), (44, 14141), (76, 14288), (92, 14378), (101, 14423), (122, 14567), (126, 14603),

Gene: Podrick_17 Start: 13988, Stop: 14602, Start Num: 9

Candidate Starts for Podrick_17:

(Start: 9 @13988 has 420 MA's), (Start: 11 @13997 has 1 MA's), (19, 14030), (44, 14132), (76, 14279), (88, 14360), (92, 14369), (101, 14414), (122, 14558), (126, 14594),

Gene: Pops_17 Start: 14000, Stop: 14614, Start Num: 9

Candidate Starts for Pops_17:

(Start: 9 @14000 has 420 MA's), (Start: 11 @14009 has 1 MA's), (19, 14042), (44, 14144), (76, 14291), (88, 14372), (92, 14381), (101, 14426), (122, 14570), (126, 14606),

Gene: Poster_16 Start: 14678, Stop: 15289, Start Num: 9

Candidate Starts for Poster_16:

(Start: 9 @14678 has 420 MA's), (18, 14717), (23, 14732), (33, 14768), (48, 14840), (52, 14858), (58, 14882), (59, 14885), (71, 14936), (92, 15059), (102, 15110), (107, 15146), (108, 15155), (123, 15269),

Gene: Potter_16 Start: 13711, Stop: 14325, Start Num: 9

Candidate Starts for Potter_16:

(Start: 9 @13711 has 420 MA's), (Start: 11 @13720 has 1 MA's), (19, 13753), (44, 13855), (76, 14002), (92, 14092), (101, 14137), (122, 14281), (126, 14317),

Gene: Prickles_17 Start: 13991, Stop: 14605, Start Num: 9

Candidate Starts for Prickles_17:

(Start: 9 @13991 has 420 MA's), (Start: 11 @14000 has 1 MA's), (19, 14033), (44, 14135), (76, 14282), (92, 14372), (101, 14417), (122, 14561), (126, 14597),

Gene: Prince_17 Start: 15902, Stop: 16513, Start Num: 9

Candidate Starts for Prince_17:

(Start: 9 @15902 has 420 MA's), (18, 15941), (23, 15956), (29, 15977), (33, 15992), (44, 16046), (48, 16064), (52, 16082), (58, 16106), (59, 16109), (92, 16283), (102, 16334), (123, 16493),

Gene: ProfessorX_17 Start: 13989, Stop: 14603, Start Num: 9

Candidate Starts for ProfessorX_17:

(Start: 9 @13989 has 420 MA's), (Start: 11 @13998 has 1 MA's), (19, 14031), (44, 14133), (76, 14280), (88, 14361), (92, 14370), (101, 14415), (126, 14595),

Gene: Puhltonio_17 Start: 14006, Stop: 14620, Start Num: 9

Candidate Starts for Puhltonio_17:

(Start: 9 @14006 has 420 MA's), (Start: 11 @14015 has 1 MA's), (19, 14048), (44, 14150), (76, 14297), (88, 14378), (92, 14387), (101, 14432), (126, 14612),

Gene: QueenBeane_17 Start: 13997, Stop: 14611, Start Num: 9

Candidate Starts for QueenBeane_17:

(Start: 9 @13997 has 420 MA's), (Start: 11 @14006 has 1 MA's), (19, 14039), (44, 14141), (76, 14288), (92, 14378), (101, 14423), (122, 14567), (126, 14603),

Gene: QueenPie_17 Start: 16276, Stop: 16887, Start Num: 9

Candidate Starts for QueenPie_17:

(Start: 9 @16276 has 420 MA's), (18, 16315), (23, 16330), (33, 16366), (48, 16438), (49, 16444), (52, 16456), (58, 16480), (59, 16483), (71, 16534), (92, 16657), (102, 16708), (107, 16744), (108, 16753), (123, 16867),

Gene: Quisquilliae_17 Start: 14012, Stop: 14626, Start Num: 9

Candidate Starts for Quisquilliae_17:

(Start: 9 @14012 has 420 MA's), (Start: 11 @14021 has 1 MA's), (19, 14054), (44, 14156), (76, 14303), (88, 14384), (92, 14393), (101, 14438), (122, 14582), (126, 14618),

Gene: Rabbs_31 Start: 27190, Stop: 27807, Start Num: 9

Candidate Starts for Rabbs_31:

(Start: 9 @27190 has 420 MA's), (22, 27238), (31, 27271), (34, 27280), (42, 27331), (49, 27364), (51, 27373), (54, 27385), (57, 27394), (74, 27496), (78, 27511), (82, 27553), (97, 27616),

Gene: Rattrick_31 Start: 27098, Stop: 27715, Start Num: 9

Candidate Starts for Rattrick_31:

(Start: 9 @27098 has 420 MA's), (22, 27146), (31, 27179), (34, 27188), (42, 27239), (49, 27272), (51, 27281), (54, 27293), (57, 27302), (74, 27404), (78, 27419), (82, 27461), (97, 27524),

Gene: RawrgerThat_17 Start: 15739, Stop: 16350, Start Num: 9

Candidate Starts for RawrgerThat_17:

(Start: 9 @15739 has 420 MA's), (18, 15778), (23, 15793), (29, 15814), (33, 15829), (44, 15883), (48, 15901), (52, 15919), (58, 15943), (71, 15997), (92, 16120), (102, 16171), (107, 16207), (123, 16330),

Gene: Reccee_18 Start: 15779, Stop: 16378, Start Num: 9

Candidate Starts for Reccee_18:

(Start: 9 @15779 has 420 MA's), (Start: 11 @15788 has 1 MA's), (16, 15809), (22, 15830), (23, 15833), (27, 15848), (52, 15959), (55, 15971), (58, 15983), (59, 15986), (85, 16133), (97, 16178), (101, 16205), (107, 16247), (122, 16349), (124, 16370),

Gene: RedMaple_16 Start: 14009, Stop: 14623, Start Num: 9

Candidate Starts for RedMaple_16:

(Start: 9 @14009 has 420 MA's), (Start: 11 @14018 has 1 MA's), (19, 14051), (44, 14153), (76, 14300), (88, 14381), (92, 14390), (101, 14435), (122, 14579), (126, 14615),

Gene: RedRaider89_18 Start: 14229, Stop: 14843, Start Num: 9

Candidate Starts for RedRaider89_18:

(Start: 9 @14229 has 420 MA's), (Start: 11 @14238 has 1 MA's), (19, 14271), (44, 14373), (76, 14520), (92, 14610), (101, 14655), (122, 14799), (126, 14835),

Gene: Remy19_31 Start: 27107, Stop: 27724, Start Num: 9

Candidate Starts for Remy19_31:

(Start: 9 @27107 has 420 MA's), (22, 27155), (31, 27188), (34, 27197), (38, 27224), (42, 27248), (49, 27281), (51, 27290), (54, 27302), (57, 27311), (74, 27413), (78, 27428), (82, 27470), (97, 27533), (111, 27635),

Gene: Renaissance_31 Start: 27107, Stop: 27724, Start Num: 9

Candidate Starts for Renaissance_31:

(Start: 9 @27107 has 420 MA's), (22, 27155), (31, 27188), (34, 27197), (38, 27224), (42, 27248), (49, 27281), (51, 27290), (54, 27302), (57, 27311), (74, 27413), (78, 27428), (82, 27470), (97, 27533), (111, 27635),

Gene: Renkei_16 Start: 14685, Stop: 15296, Start Num: 9

Candidate Starts for Renkei_16:

(Start: 9 @14685 has 420 MA's), (18, 14724), (23, 14739), (33, 14775), (38, 14805), (48, 14847), (58, 14889), (59, 14892), (71, 14943), (92, 15066), (102, 15117), (107, 15153), (108, 15162), (123, 15276),

Gene: Reprobate_18 Start: 15842, Stop: 16441, Start Num: 9

Candidate Starts for Reprobate_18:

(Start: 9 @15842 has 420 MA's), (Start: 11 @15851 has 1 MA's), (22, 15893), (23, 15896), (27, 15911), (48, 16004), (55, 16034), (58, 16046), (59, 16049), (71, 16100), (76, 16133), (84, 16193), (107, 16310), (124, 16433),

Gene: Rich_18 Start: 15741, Stop: 16340, Start Num: 9

Candidate Starts for Rich_18:

(Start: 9 @15741 has 420 MA's), (16, 15771), (23, 15795), (27, 15810), (48, 15903), (52, 15921), (55, 15933), (58, 15945), (59, 15948), (76, 16032), (85, 16095), (107, 16209), (124, 16332),

Gene: Richarlison_31 Start: 27107, Stop: 27724, Start Num: 9

Candidate Starts for Richarlison_31:

(Start: 9 @27107 has 420 MA's), (22, 27155), (31, 27188), (34, 27197), (38, 27224), (42, 27248), (49, 27281), (51, 27290), (54, 27302), (57, 27311), (74, 27413), (78, 27428), (82, 27470), (97, 27533), (111, 27635),

Gene: Ricotta_16 Start: 13721, Stop: 14335, Start Num: 9

Candidate Starts for Ricotta_16:

(Start: 9 @13721 has 420 MA's), (Start: 11 @13730 has 1 MA's), (19, 13763), (44, 13865), (76, 14012), (92, 14102), (101, 14147), (122, 14291), (126, 14327),

Gene: Riggan_17 Start: 13977, Stop: 14591, Start Num: 9

Candidate Starts for Riggan_17:

(Start: 9 @13977 has 420 MA's), (Start: 11 @13986 has 1 MA's), (19, 14019), (44, 14121), (76, 14268), (88, 14349), (92, 14358), (101, 14403), (122, 14547), (126, 14583),

Gene: Rimu_17 Start: 13709, Stop: 14323, Start Num: 9

Candidate Starts for Rimu_17:

(Start: 9 @13709 has 420 MA's), (Start: 11 @13718 has 1 MA's), (19, 13751), (44, 13853), (76, 14000), (88, 14081), (92, 14090), (101, 14135), (126, 14315),

Gene: Rinkes_21 Start: 17665, Stop: 18258, Start Num: 9

Candidate Starts for Rinkes_21:

(Start: 9 @17665 has 420 MA's), (Start: 11 @17674 has 1 MA's), (12, 17677), (17, 17701), (27, 17734), (30, 17746), (44, 17809), (49, 17833), (55, 17857), (68, 17905), (69, 17911), (75, 17950), (96, 18061), (99, 18082), (101, 18091), (109, 18142), (122, 18229),

Gene: Rita130_18 Start: 15608, Stop: 16198, Start Num: 11

Candidate Starts for Rita130_18:

(Start: 9 @15599 has 420 MA's), (Start: 11 @15608 has 1 MA's), (16, 15629), (22, 15650), (23, 15653), (27, 15668), (52, 15779), (55, 15791), (58, 15803), (59, 15806), (85, 15953), (97, 15998), (101, 16025), (107, 16067), (122, 16169), (124, 16190),

Gene: Riverton_17 Start: 14003, Stop: 14617, Start Num: 9

Candidate Starts for Riverton_17:

(Start: 9 @14003 has 420 MA's), (Start: 11 @14012 has 1 MA's), (19, 14045), (44, 14147), (76, 14294), (88, 14375), (92, 14384), (101, 14429), (122, 14573), (126, 14609),

Gene: Robyn_16 Start: 13570, Stop: 14184, Start Num: 9

Candidate Starts for Robyn_16:

(Start: 9 @13570 has 420 MA's), (Start: 11 @13579 has 1 MA's), (19, 13612), (44, 13714), (76, 13861), (88, 13942), (92, 13951), (101, 13996), (122, 14140), (126, 14176),

Gene: Roliet_17 Start: 13997, Stop: 14611, Start Num: 9

Candidate Starts for Roliet_17:

(Start: 9 @13997 has 420 MA's), (Start: 11 @14006 has 1 MA's), (19, 14039), (44, 14141), (76, 14288), (92, 14378), (101, 14423), (122, 14567), (126, 14603),

Gene: Roscoe_18 Start: 14238, Stop: 14852, Start Num: 9

Candidate Starts for Roscoe_18:

(Start: 9 @14238 has 420 MA's), (Start: 11 @14247 has 1 MA's), (19, 14280), (44, 14382), (76, 14529), (92, 14619), (101, 14664), (122, 14808), (126, 14844),

Gene: Roy17_17 Start: 13699, Stop: 14313, Start Num: 9

Candidate Starts for Roy17_17:

(Start: 9 @13699 has 420 MA's), (Start: 11 @13708 has 1 MA's), (19, 13741), (44, 13843), (76, 13990), (88, 14071), (92, 14080), (101, 14125), (126, 14305),

Gene: Ruriko_32 Start: 27107, Stop: 27724, Start Num: 9

Candidate Starts for Ruriko_32:

(Start: 9 @27107 has 420 MA's), (22, 27155), (31, 27188), (34, 27197), (38, 27224), (42, 27248), (49, 27281), (51, 27290), (54, 27302), (57, 27311), (74, 27413), (78, 27428), (82, 27470), (97, 27533), (111, 27635),

Gene: SDcharge11_17 Start: 13978, Stop: 14592, Start Num: 9

Candidate Starts for SDcharge11_17:

(Start: 9 @13978 has 420 MA's), (Start: 11 @13987 has 1 MA's), (19, 14020), (44, 14122), (76, 14269), (88, 14350), (92, 14359), (101, 14404), (122, 14548), (126, 14584),

Gene: Saguaro_19 Start: 16734, Stop: 17336, Start Num: 9

Candidate Starts for Saguaro_19:

(Start: 9 @16734 has 420 MA's), (Start: 11 @16743 has 1 MA's), (21, 16782), (22, 16785), (23, 16788), (37, 16845), (38, 16854), (48, 16896), (51, 16911), (55, 16926), (82, 17070), (92, 17115), (94, 17121), (107, 17205),

Gene: SallyH_17 Start: 14007, Stop: 14621, Start Num: 9

Candidate Starts for SallyH_17:

(Start: 9 @14007 has 420 MA's), (Start: 11 @14016 has 1 MA's), (19, 14049), (44, 14151), (76, 14298), (88, 14379), (92, 14388), (101, 14433), (122, 14577), (126, 14613),

Gene: Samaymay_17 Start: 13997, Stop: 14611, Start Num: 9

Candidate Starts for Samaymay_17:

(Start: 9 @13997 has 420 MA's), (Start: 11 @14006 has 1 MA's), (19, 14039), (44, 14141), (76, 14288), (92, 14378), (101, 14423), (122, 14567), (126, 14603),

Gene: SassyCat97_16 Start: 13704, Stop: 14318, Start Num: 9

Candidate Starts for SassyCat97_16:

(Start: 9 @13704 has 420 MA's), (Start: 11 @13713 has 1 MA's), (19, 13746), (44, 13848), (76, 13995), (92, 14085), (101, 14130), (122, 14274), (126, 14310),

Gene: Schadenfreude_16 Start: 13554, Stop: 14168, Start Num: 9

Candidate Starts for Schadenfreude_16:

(Start: 9 @13554 has 420 MA's), (Start: 11 @13563 has 1 MA's), (19, 13596), (44, 13698), (76, 13845), (88, 13926), (92, 13935), (101, 13980), (122, 14124), (126, 14160),

Gene: Schiebel_31 Start: 27107, Stop: 27724, Start Num: 9

Candidate Starts for Schiebel_31:

(Start: 9 @27107 has 420 MA's), (22, 27155), (31, 27188), (34, 27197), (38, 27224), (42, 27248), (49, 27281), (51, 27290), (54, 27302), (57, 27311), (74, 27413), (78, 27428), (82, 27470), (97, 27533), (111, 27635),

Gene: Schueller_16 Start: 13695, Stop: 14309, Start Num: 9

Candidate Starts for Schueller_16:

(Start: 9 @13695 has 420 MA's), (Start: 11 @13704 has 1 MA's), (19, 13737), (44, 13839), (76, 13986), (92, 14076), (101, 14121), (126, 14301),

Gene: Scoot17C_17 Start: 13998, Stop: 14612, Start Num: 9

Candidate Starts for Scoot17C_17:

(Start: 9 @13998 has 420 MA's), (Start: 11 @14007 has 1 MA's), (19, 14040), (44, 14142), (76, 14289), (88, 14370), (92, 14379), (101, 14424), (126, 14604),

Gene: Scrick_16 Start: 13717, Stop: 14331, Start Num: 9

Candidate Starts for Scrick_16:

(Start: 9 @13717 has 420 MA's), (Start: 11 @13726 has 1 MA's), (19, 13759), (44, 13861), (76, 14008), (92, 14098), (101, 14143), (122, 14287), (126, 14323),

Gene: Selr12_17 Start: 13722, Stop: 14336, Start Num: 9

Candidate Starts for Selr12_17:

(Start: 9 @13722 has 420 MA's), (Start: 11 @13731 has 1 MA's), (19, 13764), (44, 13866), (76, 14013), (92, 14103), (101, 14148), (122, 14292), (126, 14328),

Gene: Serendipitous_18 Start: 15788, Stop: 16387, Start Num: 9

Candidate Starts for Serendipitous_18:

(Start: 9 @15788 has 420 MA's), (Start: 11 @15797 has 1 MA's), (22, 15839), (27, 15857), (48, 15950), (52, 15968), (55, 15980), (59, 15995), (71, 16046), (84, 16139), (107, 16256), (124, 16379),

Gene: Serendipity_17 Start: 14018, Stop: 14632, Start Num: 9

Candidate Starts for Serendipity_17:

(Start: 9 @14018 has 420 MA's), (Start: 11 @14027 has 1 MA's), (19, 14060), (44, 14162), (76, 14309), (88, 14390), (92, 14399), (101, 14444), (126, 14624),

Gene: Serpentine_0017 Start: 14000, Stop: 14614, Start Num: 9

Candidate Starts for Serpentine_0017:

(Start: 9 @14000 has 420 MA's), (Start: 11 @14009 has 1 MA's), (19, 14042), (44, 14144), (76, 14291), (92, 14381), (101, 14426), (122, 14570), (126, 14606),

Gene: ShaboiShabazz_31 Start: 27107, Stop: 27724, Start Num: 9

Candidate Starts for ShaboiShabazz_31:

(Start: 9 @27107 has 420 MA's), (22, 27155), (31, 27188), (34, 27197), (38, 27224), (42, 27248), (49, 27281), (51, 27290), (54, 27302), (57, 27311), (74, 27413), (78, 27428), (82, 27470), (97, 27533), (111, 27635),

Gene: ShadowBud_17 Start: 14012, Stop: 14626, Start Num: 9

Candidate Starts for ShadowBud_17:

(Start: 9 @14012 has 420 MA's), (Start: 11 @14021 has 1 MA's), (19, 14054), (44, 14156), (76, 14303), (88, 14384), (92, 14393), (101, 14438), (122, 14582), (126, 14618),

Gene: Sheila_17 Start: 13989, Stop: 14603, Start Num: 9

Candidate Starts for Sheila_17:

(Start: 9 @13989 has 420 MA's), (Start: 11 @13998 has 1 MA's), (19, 14031), (44, 14133), (76, 14280), (88, 14361), (92, 14370), (101, 14415), (122, 14559), (126, 14595),

Gene: Shenyu_18 Start: 15565, Stop: 16164, Start Num: 9

Candidate Starts for Shenyu_18:

(Start: 9 @15565 has 420 MA's), (Start: 11 @15574 has 1 MA's), (16, 15595), (27, 15634), (52, 15745), (55, 15757), (58, 15769), (59, 15772), (71, 15823), (84, 15916), (107, 16033), (124, 16156),

Gene: ShiVal_17 Start: 13991, Stop: 14605, Start Num: 9

Candidate Starts for ShiVal_17:

(Start: 9 @13991 has 420 MA's), (Start: 11 @14000 has 1 MA's), (19, 14033), (44, 14135), (76, 14282), (92, 14372), (101, 14417), (122, 14561), (126, 14597),

Gene: Sigman_17 Start: 13988, Stop: 14602, Start Num: 9

Candidate Starts for Sigman_17:

(Start: 9 @13988 has 420 MA's), (Start: 11 @13997 has 1 MA's), (19, 14030), (44, 14132), (76, 14279), (88, 14360), (92, 14369), (101, 14414), (126, 14594),

Gene: SilverBell_17 Start: 14003, Stop: 14617, Start Num: 9

Candidate Starts for SilverBell_17:

(Start: 9 @14003 has 420 MA's), (Start: 11 @14012 has 1 MA's), (19, 14045), (44, 14147), (76, 14294), (92, 14384), (101, 14429), (126, 14609),

Gene: Simielle_16 Start: 13689, Stop: 14303, Start Num: 9

Candidate Starts for Simielle_16:

(Start: 9 @13689 has 420 MA's), (Start: 11 @13698 has 1 MA's), (19, 13731), (44, 13833), (76, 13980), (92, 14070), (101, 14115), (122, 14259), (126, 14295),

Gene: SirBeauregard_16 Start: 13664, Stop: 14278, Start Num: 9

Candidate Starts for SirBeauregard_16:

(Start: 9 @13664 has 420 MA's), (Start: 11 @13673 has 1 MA's), (19, 13706), (44, 13808), (76, 13955), (92, 14045), (101, 14090), (122, 14234), (126, 14270),

Gene: SirJeffery_18 Start: 15609, Stop: 16199, Start Num: 11

Candidate Starts for SirJeffery_18:

(Start: 9 @15600 has 420 MA's), (Start: 11 @15609 has 1 MA's), (16, 15630), (22, 15651), (23, 15654), (27, 15669), (48, 15762), (51, 15777), (52, 15780), (55, 15792), (58, 15804), (59, 15807), (85, 15954), (94, 15987), (107, 16068), (122, 16170), (124, 16191),

Gene: Sizemore_31 Start: 27108, Stop: 27725, Start Num: 9

Candidate Starts for Sizemore_31:

(Start: 9 @27108 has 420 MA's), (22, 27156), (31, 27189), (34, 27198), (38, 27225), (42, 27249), (49, 27282), (51, 27291), (54, 27303), (57, 27312), (74, 27414), (78, 27429), (82, 27471), (97, 27534), (111, 27636),

Gene: Skippy_17 Start: 13982, Stop: 14596, Start Num: 9

Candidate Starts for Skippy_17:

(Start: 9 @13982 has 420 MA's), (Start: 11 @13991 has 1 MA's), (19, 14024), (44, 14126), (76, 14273), (92, 14363), (101, 14408), (122, 14552), (126, 14588),

Gene: Slatt_17 Start: 14014, Stop: 14628, Start Num: 9

Candidate Starts for Slatt_17:

(Start: 9 @14014 has 420 MA's), (Start: 11 @14023 has 1 MA's), (19, 14056), (44, 14158), (76, 14305), (88, 14386), (92, 14395), (101, 14440), (122, 14584), (126, 14620),

Gene: Sneeze_31 Start: 27189, Stop: 27806, Start Num: 9

Candidate Starts for Sneeze_31:

(Start: 9 @27189 has 420 MA's), (22, 27237), (31, 27270), (34, 27279), (42, 27330), (49, 27363), (51, 27372), (54, 27384), (57, 27393), (74, 27495), (78, 27510), (82, 27552), (97, 27615),

Gene: Soile_17 Start: 13709, Stop: 14323, Start Num: 9

Candidate Starts for Soile_17:

(Start: 9 @13709 has 420 MA's), (Start: 11 @13718 has 1 MA's), (19, 13751), (44, 13853), (76, 14000), (92, 14090), (101, 14135), (122, 14279), (126, 14315),

Gene: Solosis_16 Start: 13716, Stop: 14330, Start Num: 9

Candidate Starts for Solosis_16:

(Start: 9 @13716 has 420 MA's), (Start: 11 @13725 has 1 MA's), (19, 13758), (44, 13860), (76, 14007), (88, 14088), (92, 14097), (101, 14142), (126, 14322),

Gene: Sophia_16 Start: 13704, Stop: 14318, Start Num: 9

Candidate Starts for Sophia_16:

(Start: 9 @13704 has 420 MA's), (Start: 11 @13713 has 1 MA's), (19, 13746), (44, 13848), (76, 13995), (92, 14085), (101, 14130), (126, 14310),

Gene: Soto_17 Start: 13994, Stop: 14608, Start Num: 9

Candidate Starts for Soto_17:

(Start: 9 @13994 has 420 MA's), (Start: 11 @14003 has 1 MA's), (19, 14036), (44, 14138), (76, 14285), (92, 14375), (101, 14420), (122, 14564), (126, 14600),

Gene: Spartan300_17 Start: 13994, Stop: 14608, Start Num: 9

Candidate Starts for Spartan300_17:

(Start: 9 @13994 has 420 MA's), (Start: 11 @14003 has 1 MA's), (19, 14036), (44, 14138), (76, 14285), (88, 14366), (92, 14375), (101, 14420), (122, 14564), (126, 14600),

Gene: Squid_17 Start: 13704, Stop: 14318, Start Num: 9

Candidate Starts for Squid_17:

(Start: 9 @13704 has 420 MA's), (Start: 11 @13713 has 1 MA's), (19, 13746), (44, 13848), (76, 13995), (92, 14085), (101, 14130), (122, 14274), (126, 14310),

Gene: Squiggle_17 Start: 13704, Stop: 14318, Start Num: 9

Candidate Starts for Squiggle_17:

(Start: 9 @13704 has 420 MA's), (Start: 11 @13713 has 1 MA's), (19, 13746), (44, 13848), (76, 13995), (88, 14076), (92, 14085), (101, 14130), (122, 14274), (126, 14310),

Gene: Stargaze_31 Start: 28897, Stop: 29514, Start Num: 9

Candidate Starts for Stargaze_31:

(Start: 8 @28894 has 10 MA's), (Start: 9 @28897 has 420 MA's), (49, 29071), (53, 29089), (85, 29278), (107, 29392),

Gene: Stinger_15 Start: 14241, Stop: 14852, Start Num: 9

Candidate Starts for Stinger_15:

(Start: 9 @14241 has 420 MA's), (18, 14280), (23, 14295), (29, 14316), (33, 14331), (38, 14361), (48, 14403), (49, 14409), (52, 14421), (58, 14445), (71, 14499), (92, 14622), (107, 14709), (108, 14718), (122, 14811), (123, 14832),

Gene: StinkyVeggy_20 Start: 15730, Stop: 16320, Start Num: 11

Candidate Starts for StinkyVeggy_20:

(Start: 9 @15721 has 420 MA's), (Start: 11 @15730 has 1 MA's), (16, 15751), (27, 15790), (55, 15913), (58, 15925), (59, 15928), (107, 16189), (124, 16312),

Gene: Struggle_16 Start: 13550, Stop: 14164, Start Num: 9

Candidate Starts for Struggle_16:

(Start: 9 @13550 has 420 MA's), (Start: 11 @13559 has 1 MA's), (19, 13592), (44, 13694), (76, 13841), (92, 13931), (101, 13976), (122, 14120), (126, 14156),

Gene: Suffolk_17 Start: 13996, Stop: 14610, Start Num: 9

Candidate Starts for Suffolk_17:

(Start: 9 @13996 has 420 MA's), (Start: 11 @14005 has 1 MA's), (19, 14038), (44, 14140), (76, 14287), (92, 14377), (101, 14422), (122, 14566), (126, 14602),

Gene: Suigeneris_18 Start: 15600, Stop: 16199, Start Num: 9

Candidate Starts for Suigeneris_18:

(Start: 9 @15600 has 420 MA's), (Start: 11 @15609 has 1 MA's), (16, 15630), (22, 15651), (27, 15669), (29, 15675), (48, 15762), (52, 15780), (55, 15792), (58, 15804), (59, 15807), (86, 15957), (107, 16068), (122, 16170), (124, 16191),

Gene: Surely_17 Start: 14006, Stop: 14620, Start Num: 9

Candidate Starts for Surely_17:

(Start: 9 @14006 has 420 MA's), (Start: 11 @14015 has 1 MA's), (19, 14048), (44, 14150), (76, 14297), (88, 14378), (92, 14387), (101, 14432), (122, 14576), (126, 14612),

Gene: Sweets_31 Start: 27102, Stop: 27719, Start Num: 9

Candidate Starts for Sweets_31:

(Start: 9 @27102 has 420 MA's), (22, 27150), (31, 27183), (34, 27192), (38, 27219), (42, 27243), (49, 27276), (51, 27285), (54, 27297), (57, 27306), (74, 27408), (78, 27423), (82, 27465), (97, 27528), (111, 27630),

Gene: Swiphy_17 Start: 13997, Stop: 14611, Start Num: 9

Candidate Starts for Swiphy_17:

(Start: 9 @13997 has 420 MA's), (Start: 11 @14006 has 1 MA's), (19, 14039), (44, 14141), (76, 14288), (88, 14369), (92, 14378), (101, 14423), (126, 14603),

Gene: Swish_17 Start: 13992, Stop: 14606, Start Num: 9

Candidate Starts for Swish_17:

(Start: 9 @13992 has 420 MA's), (Start: 11 @14001 has 1 MA's), (19, 14034), (44, 14136), (76, 14283), (92, 14373), (101, 14418), (122, 14562), (126, 14598),

Gene: Taheera_31 Start: 27231, Stop: 27848, Start Num: 9

Candidate Starts for Taheera_31:

(Start: 9 @27231 has 420 MA's), (18, 27267), (31, 27312), (34, 27321), (49, 27405), (54, 27426), (57, 27435), (74, 27537), (78, 27552), (82, 27594), (96, 27654), (97, 27657),

Gene: TallGrassMM_17 Start: 13722, Stop: 14336, Start Num: 9

Candidate Starts for TallGrassMM_17:

(Start: 9 @13722 has 420 MA's), (Start: 11 @13731 has 1 MA's), (19, 13764), (44, 13866), (76, 14013), (92, 14103), (101, 14148), (122, 14292), (126, 14328),

Gene: Taraxa_17 Start: 13585, Stop: 14190, Start Num: 11

Candidate Starts for Taraxa_17:

(Start: 9 @13576 has 420 MA's), (Start: 11 @13585 has 1 MA's), (19, 13618), (44, 13720), (76, 13867), (88, 13948), (92, 13957), (101, 14002), (126, 14182),

Gene: Telesworld_16 Start: 13704, Stop: 14318, Start Num: 9

Candidate Starts for Telesworld_16:

(Start: 9 @13704 has 420 MA's), (Start: 11 @13713 has 1 MA's), (19, 13746), (44, 13848), (76, 13995), (92, 14085), (101, 14130), (122, 14274), (126, 14310),

Gene: Terror_31 Start: 27231, Stop: 27848, Start Num: 9

Candidate Starts for Terror_31:

(Start: 9 @27231 has 420 MA's), (18, 27267), (31, 27312), (34, 27321), (49, 27405), (54, 27426), (57, 27435), (74, 27537), (78, 27552), (82, 27594), (96, 27654), (97, 27657),

Gene: Thonko_18 Start: 13537, Stop: 14112, Start Num: 8

Candidate Starts for Thonko_18:

(Start: 8 @13537 has 10 MA's), (Start: 9 @13540 has 420 MA's), (Start: 11 @13549 has 1 MA's), (13, 13558), (22, 13591), (27, 13609), (55, 13708), (60, 13726), (71, 13774), (88, 13888), (103, 13957), (104, 13963),

Gene: Thora_17 Start: 14006, Stop: 14620, Start Num: 9

Candidate Starts for Thora_17:

(Start: 9 @14006 has 420 MA's), (Start: 11 @14015 has 1 MA's), (19, 14048), (44, 14150), (76, 14297), (92, 14387), (101, 14432), (122, 14576), (126, 14612),

Gene: ThreeOh3D2_17 Start: 14007, Stop: 14621, Start Num: 9

Candidate Starts for ThreeOh3D2_17:

(Start: 9 @14007 has 420 MA's), (Start: 11 @14016 has 1 MA's), (19, 14049), (44, 14151), (76, 14298), (88, 14379), (92, 14388), (101, 14433), (122, 14577), (126, 14613),

Gene: Thunderbird_16 Start: 13706, Stop: 14320, Start Num: 9

Candidate Starts for Thunderbird_16:

(Start: 9 @13706 has 420 MA's), (Start: 11 @13715 has 1 MA's), (19, 13748), (44, 13850), (76, 13997), (88, 14078), (92, 14087), (101, 14132), (122, 14276), (126, 14312),

Gene: Timmi_16 Start: 13716, Stop: 14330, Start Num: 9

Candidate Starts for Timmi_16:

(Start: 9 @13716 has 420 MA's), (Start: 11 @13725 has 1 MA's), (19, 13758), (44, 13860), (76, 14007), (88, 14088), (92, 14097), (101, 14142), (126, 14322),

Gene: TinaBug_31 Start: 27102, Stop: 27719, Start Num: 9

Candidate Starts for TinaBug_31:

(Start: 9 @27102 has 420 MA's), (22, 27150), (31, 27183), (34, 27192), (38, 27219), (42, 27243), (49, 27276), (51, 27285), (54, 27297), (57, 27306), (74, 27408), (78, 27423), (82, 27465), (97, 27528), (111, 27630),

Gene: TomBombadil_17 Start: 14000, Stop: 14614, Start Num: 9

Candidate Starts for TomBombadil_17:

(Start: 9 @14000 has 420 MA's), (Start: 11 @14009 has 1 MA's), (19, 14042), (44, 14144), (76, 14291), (92, 14381), (101, 14426), (122, 14570), (126, 14606),

Gene: TomBrady_31 Start: 27108, Stop: 27725, Start Num: 9

Candidate Starts for TomBrady_31:

(Start: 9 @27108 has 420 MA's), (22, 27156), (31, 27189), (34, 27198), (38, 27225), (42, 27249), (49, 27282), (51, 27291), (54, 27303), (57, 27312), (74, 27414), (78, 27429), (82, 27471), (97, 27534), (111, 27636),

Gene: Tomlarah_17 Start: 13991, Stop: 14605, Start Num: 9

Candidate Starts for Tomlarah_17:

(Start: 9 @13991 has 420 MA's), (Start: 11 @14000 has 1 MA's), (19, 14033), (44, 14135), (76, 14282), (92, 14372), (101, 14417), (122, 14561), (126, 14597),

Gene: Toni_16 Start: 13702, Stop: 14316, Start Num: 9

Candidate Starts for Toni_16:

(Start: 9 @13702 has 420 MA's), (Start: 11 @13711 has 1 MA's), (19, 13744), (44, 13846), (76, 13993), (88, 14074), (92, 14083), (101, 14128), (122, 14272), (126, 14308),

Gene: TooFast2Furius_18 Start: 14238, Stop: 14852, Start Num: 9

Candidate Starts for TooFast2Furius_18:

(Start: 9 @14238 has 420 MA's), (Start: 11 @14247 has 1 MA's), (19, 14280), (44, 14382), (76, 14529), (92, 14619), (101, 14664), (122, 14808), (126, 14844),

Gene: Tooj_17 Start: 14004, Stop: 14618, Start Num: 9

Candidate Starts for Tooj_17:

(Start: 9 @14004 has 420 MA's), (Start: 11 @14013 has 1 MA's), (19, 14046), (44, 14148), (76, 14295), (88, 14376), (92, 14385), (101, 14430), (122, 14574), (126, 14610),

Gene: Triad_17 Start: 13541, Stop: 14155, Start Num: 9

Candidate Starts for Triad_17:

(Start: 9 @13541 has 420 MA's), (Start: 11 @13550 has 1 MA's), (19, 13583), (44, 13685), (76, 13832), (92, 13922), (101, 13967), (122, 14111), (126, 14147),

Gene: True_16 Start: 13705, Stop: 14319, Start Num: 9

Candidate Starts for True_16:

(Start: 9 @13705 has 420 MA's), (Start: 11 @13714 has 1 MA's), (19, 13747), (44, 13849), (76, 13996), (92, 14086), (101, 14131), (122, 14275), (126, 14311),

Gene: Trypo_17 Start: 13994, Stop: 14608, Start Num: 9

Candidate Starts for Trypo_17:

(Start: 9 @13994 has 420 MA's), (Start: 11 @14003 has 1 MA's), (19, 14036), (44, 14138), (76, 14285), (88, 14366), (92, 14375), (101, 14420), (126, 14600),

Gene: TyrionL_16 Start: 13556, Stop: 14170, Start Num: 9

Candidate Starts for TyrionL_16:

(Start: 9 @13556 has 420 MA's), (Start: 11 @13565 has 1 MA's), (19, 13598), (44, 13700), (76, 13847), (92, 13937), (101, 13982), (122, 14126), (126, 14162),

Gene: UAch1_17 Start: 14015, Stop: 14629, Start Num: 9

Candidate Starts for UAch1_17:

(Start: 9 @14015 has 420 MA's), (Start: 11 @14024 has 1 MA's), (19, 14057), (44, 14159), (76, 14306), (92, 14396), (101, 14441), (122, 14585), (126, 14621),

Gene: Ubuntu_36 Start: 30329, Stop: 30949, Start Num: 9

Candidate Starts for Ubuntu_36:

(5, 30278), (Start: 9 @30329 has 420 MA's), (21, 30377), (36, 30431), (38, 30449), (51, 30515), (69, 30605), (74, 30638), (85, 30713), (89, 30731), (96, 30755), (99, 30776), (101, 30785), (106, 30821), (107, 30827), (118, 30905),

Gene: UncleHowie_17 Start: 13704, Stop: 14318, Start Num: 9

Candidate Starts for UncleHowie_17:

(Start: 9 @13704 has 420 MA's), (Start: 11 @13713 has 1 MA's), (19, 13746), (44, 13848), (76, 13995), (88, 14076), (92, 14085), (101, 14130), (126, 14310),

Gene: Usavi_17 Start: 14006, Stop: 14620, Start Num: 9

Candidate Starts for Usavi_17:

(Start: 9 @14006 has 420 MA's), (Start: 11 @14015 has 1 MA's), (19, 14048), (44, 14150), (76, 14297), (88, 14378), (92, 14387), (101, 14432), (122, 14576), (126, 14612),

Gene: Vaishali24_16 Start: 13657, Stop: 14271, Start Num: 9

Candidate Starts for Vaishali24_16:

(Start: 9 @13657 has 420 MA's), (Start: 11 @13666 has 1 MA's), (19, 13699), (44, 13801), (76, 13948), (92, 14038), (101, 14083), (122, 14227), (126, 14263),

Gene: Valjean_17 Start: 13997, Stop: 14611, Start Num: 9

Candidate Starts for Valjean_17:

(Start: 9 @13997 has 420 MA's), (Start: 11 @14006 has 1 MA's), (19, 14039), (44, 14141), (76, 14288), (88, 14369), (92, 14378), (101, 14423), (122, 14567), (126, 14603),

Gene: Vaticameos_17 Start: 13695, Stop: 14309, Start Num: 9

Candidate Starts for Vaticameos_17:

(Start: 9 @13695 has 420 MA's), (Start: 11 @13704 has 1 MA's), (19, 13737), (44, 13839), (76, 13986), (92, 14076), (101, 14121), (122, 14265), (126, 14301),

Gene: Veritas_16 Start: 13544, Stop: 14158, Start Num: 9

Candidate Starts for Veritas_16:

(Start: 9 @13544 has 420 MA's), (Start: 11 @13553 has 1 MA's), (19, 13586), (44, 13688), (76, 13835), (92, 13925), (101, 13970), (122, 14114), (126, 14150),

Gene: Vincenzo_18 Start: 16515, Stop: 17126, Start Num: 9

Candidate Starts for Vincenzo_18:

(Start: 9 @16515 has 420 MA's), (22, 16566), (24, 16575), (33, 16605), (44, 16659), (52, 16695), (58, 16719), (71, 16773), (102, 16947), (107, 16983), (108, 16992),

Gene: VioletZ_17 Start: 15775, Stop: 16386, Start Num: 9

Candidate Starts for VioletZ_17:

(Start: 9 @15775 has 420 MA's), (18, 15814), (23, 15829), (29, 15850), (33, 15865), (44, 15919), (48, 15937), (52, 15955), (58, 15979), (71, 16033), (92, 16156), (97, 16174), (102, 16207), (107, 16243), (123, 16366),

Gene: Virapocalypse_17 Start: 13989, Stop: 14603, Start Num: 9

Candidate Starts for Virapocalypse_17:

(Start: 9 @13989 has 420 MA's), (Start: 11 @13998 has 1 MA's), (19, 14031), (44, 14133), (76, 14280), (92, 14370), (101, 14415), (122, 14559), (126, 14595),

Gene: Virgeve_16 Start: 13710, Stop: 14324, Start Num: 9

Candidate Starts for Virgeve_16:

(Start: 9 @13710 has 420 MA's), (Start: 11 @13719 has 1 MA's), (19, 13752), (44, 13854), (76, 14001), (92, 14091), (101, 14136), (122, 14280), (126, 14316),

Gene: Vista_17 Start: 14000, Stop: 14614, Start Num: 9

Candidate Starts for Vista_17:

(Start: 9 @14000 has 420 MA's), (Start: 11 @14009 has 1 MA's), (19, 14042), (44, 14144), (76, 14291), (88, 14372), (92, 14381), (101, 14426), (126, 14606),

Gene: Vivaldi_17 Start: 14031, Stop: 14645, Start Num: 9

Candidate Starts for Vivaldi_17:

(Start: 9 @14031 has 420 MA's), (Start: 11 @14040 has 1 MA's), (19, 14073), (44, 14175), (76, 14322), (92, 14412), (101, 14457), (122, 14601), (126, 14637),

Gene: Vortex_17 Start: 13711, Stop: 14325, Start Num: 9

Candidate Starts for Vortex_17:

(Start: 9 @13711 has 420 MA's), (Start: 11 @13720 has 1 MA's), (19, 13753), (44, 13855), (76, 14002), (88, 14083), (92, 14092), (101, 14137), (126, 14317),

Gene: Waleliano_17 Start: 15745, Stop: 16356, Start Num: 9

Candidate Starts for Waleliano_17:

(Start: 9 @15745 has 420 MA's), (18, 15784), (23, 15799), (29, 15820), (33, 15835), (44, 15889), (48, 15907), (52, 15925), (58, 15949), (71, 16003), (92, 16126), (102, 16177), (107, 16213), (123, 16336),

Gene: Wallhey_16 Start: 13562, Stop: 14176, Start Num: 9

Candidate Starts for Wallhey_16:

(Start: 9 @13562 has 420 MA's), (Start: 11 @13571 has 1 MA's), (19, 13604), (44, 13706), (76, 13853), (88, 13934), (92, 13943), (101, 13988), (126, 14168),

Gene: Waterdiva_17 Start: 13998, Stop: 14612, Start Num: 9

Candidate Starts for Waterdiva_17:

(Start: 9 @13998 has 420 MA's), (Start: 11 @14007 has 1 MA's), (19, 14040), (44, 14142), (76, 14289), (88, 14370), (92, 14379), (101, 14424), (126, 14604),

Gene: Webster2_36 Start: 30329, Stop: 30949, Start Num: 9

Candidate Starts for Webster2_36:

(5, 30278), (Start: 9 @30329 has 420 MA's), (21, 30377), (36, 30431), (38, 30449), (51, 30515), (69, 30605), (74, 30638), (85, 30713), (89, 30731), (96, 30755), (99, 30776), (101, 30785), (106, 30821), (107, 30827), (118, 30905),

Gene: Weher20_17 Start: 13988, Stop: 14602, Start Num: 9

Candidate Starts for Weher20_17:

(Start: 9 @13988 has 420 MA's), (Start: 11 @13997 has 1 MA's), (19, 14030), (44, 14132), (76, 14279), (92, 14369), (101, 14414), (126, 14594),

Gene: Weirido19_32 Start: 28516, Stop: 29082, Start Num: 40

Candidate Starts for Weirido19_32:

(1, 28015), (2, 28198), (3, 28249), (40, 28516), (43, 28528), (47, 28546), (50, 28564), (62, 28636), (64, 28675), (66, 28681), (70, 28705), (72, 28723), (85, 28834), (92, 28861), (111, 28981),

Gene: Wendigo_32 Start: 27107, Stop: 27724, Start Num: 9

Candidate Starts for Wendigo_32:

(Start: 9 @27107 has 420 MA's), (22, 27155), (31, 27188), (34, 27197), (38, 27224), (42, 27248), (49, 27281), (51, 27290), (54, 27302), (57, 27311), (74, 27413), (78, 27428), (82, 27470), (97, 27533), (111,

27635),

Gene: Windsor_16 Start: 13664, Stop: 14278, Start Num: 9

Candidate Starts for Windsor_16:

(Start: 9 @13664 has 420 MA's), (Start: 11 @13673 has 1 MA's), (19, 13706), (44, 13808), (76, 13955), (92, 14045), (101, 14090), (122, 14234), (126, 14270),

Gene: Wishmaker_35 Start: 30329, Stop: 30949, Start Num: 9

Candidate Starts for Wishmaker_35:

(5, 30278), (Start: 9 @30329 has 420 MA's), (21, 30377), (36, 30431), (38, 30449), (51, 30515), (69, 30605), (74, 30638), (85, 30713), (89, 30731), (96, 30755), (99, 30776), (101, 30785), (106, 30821), (107, 30827), (118, 30905),

Gene: Xavier_16 Start: 13716, Stop: 14330, Start Num: 9

Candidate Starts for Xavier_16:

(Start: 9 @13716 has 420 MA's), (Start: 11 @13725 has 1 MA's), (19, 13758), (44, 13860), (76, 14007), (92, 14097), (101, 14142), (122, 14286), (126, 14322),

Gene: Xincheng_17 Start: 15566, Stop: 16177, Start Num: 9

Candidate Starts for Xincheng_17:

(Start: 9 @15566 has 420 MA's), (18, 15605), (23, 15620), (29, 15641), (33, 15656), (44, 15710), (48, 15728), (58, 15770), (71, 15824), (92, 15947), (102, 15998), (107, 16034),

Gene: YangYin_31 Start: 28920, Stop: 29540, Start Num: 8

Candidate Starts for YangYin_31:

(Start: 8 @28920 has 10 MA's), (Start: 9 @28923 has 420 MA's), (49, 29097), (53, 29115), (85, 29304), (107, 29418),

Gene: Yoshand_17 Start: 14001, Stop: 14615, Start Num: 9

Candidate Starts for Yoshand_17:

(Start: 9 @14001 has 420 MA's), (Start: 11 @14010 has 1 MA's), (19, 14043), (44, 14145), (76, 14292), (92, 14382), (101, 14427), (122, 14571), (126, 14607),

Gene: YouGoGlencoco_17 Start: 13994, Stop: 14608, Start Num: 9

Candidate Starts for YouGoGlencoco_17:

(Start: 9 @13994 has 420 MA's), (Start: 11 @14003 has 1 MA's), (19, 14036), (44, 14138), (76, 14285), (92, 14375), (101, 14420), (122, 14564), (126, 14600),

Gene: Zaider_18 Start: 14227, Stop: 14841, Start Num: 9

Candidate Starts for Zaider_18:

(Start: 9 @14227 has 420 MA's), (Start: 11 @14236 has 1 MA's), (19, 14269), (44, 14371), (76, 14518), (88, 14599), (92, 14608), (101, 14653), (126, 14833),

Gene: Zelda_17 Start: 13997, Stop: 14611, Start Num: 9

Candidate Starts for Zelda_17:

(Start: 9 @13997 has 420 MA's), (Start: 11 @14006 has 1 MA's), (19, 14039), (44, 14141), (76, 14288), (92, 14378), (101, 14423), (126, 14603),

Gene: Zemanar_18 Start: 15745, Stop: 16356, Start Num: 9

Candidate Starts for Zemanar_18:

(Start: 9 @15745 has 420 MA's), (18, 15784), (23, 15799), (29, 15820), (33, 15835), (44, 15889), (48, 15907), (52, 15925), (58, 15949), (71, 16003), (92, 16126), (102, 16177), (107, 16213), (123, 16336),

Gene: ZoMa_31 Start: 27107, Stop: 27724, Start Num: 9

Candidate Starts for ZoMa_31:

(Start: 9 @27107 has 420 MA's), (22, 27155), (31, 27188), (34, 27197), (38, 27224), (42, 27248), (49, 27281), (51, 27290), (54, 27302), (57, 27311), (74, 27413), (78, 27428), (82, 27470), (97, 27533), (111, 27635),

Gene: Zombie_31 Start: 27107, Stop: 27724, Start Num: 9

Candidate Starts for Zombie_31:

(Start: 9 @27107 has 420 MA's), (22, 27155), (31, 27188), (34, 27197), (38, 27224), (42, 27248), (49, 27281), (51, 27290), (54, 27302), (57, 27311), (74, 27413), (78, 27428), (82, 27470), (97, 27533), (111, 27635),

Gene: Zonia_17 Start: 14011, Stop: 14625, Start Num: 9

Candidate Starts for Zonia_17:

(Start: 9 @14011 has 420 MA's), (Start: 11 @14020 has 1 MA's), (19, 14053), (44, 14155), (76, 14302), (92, 14392), (101, 14437), (122, 14581), (126, 14617),