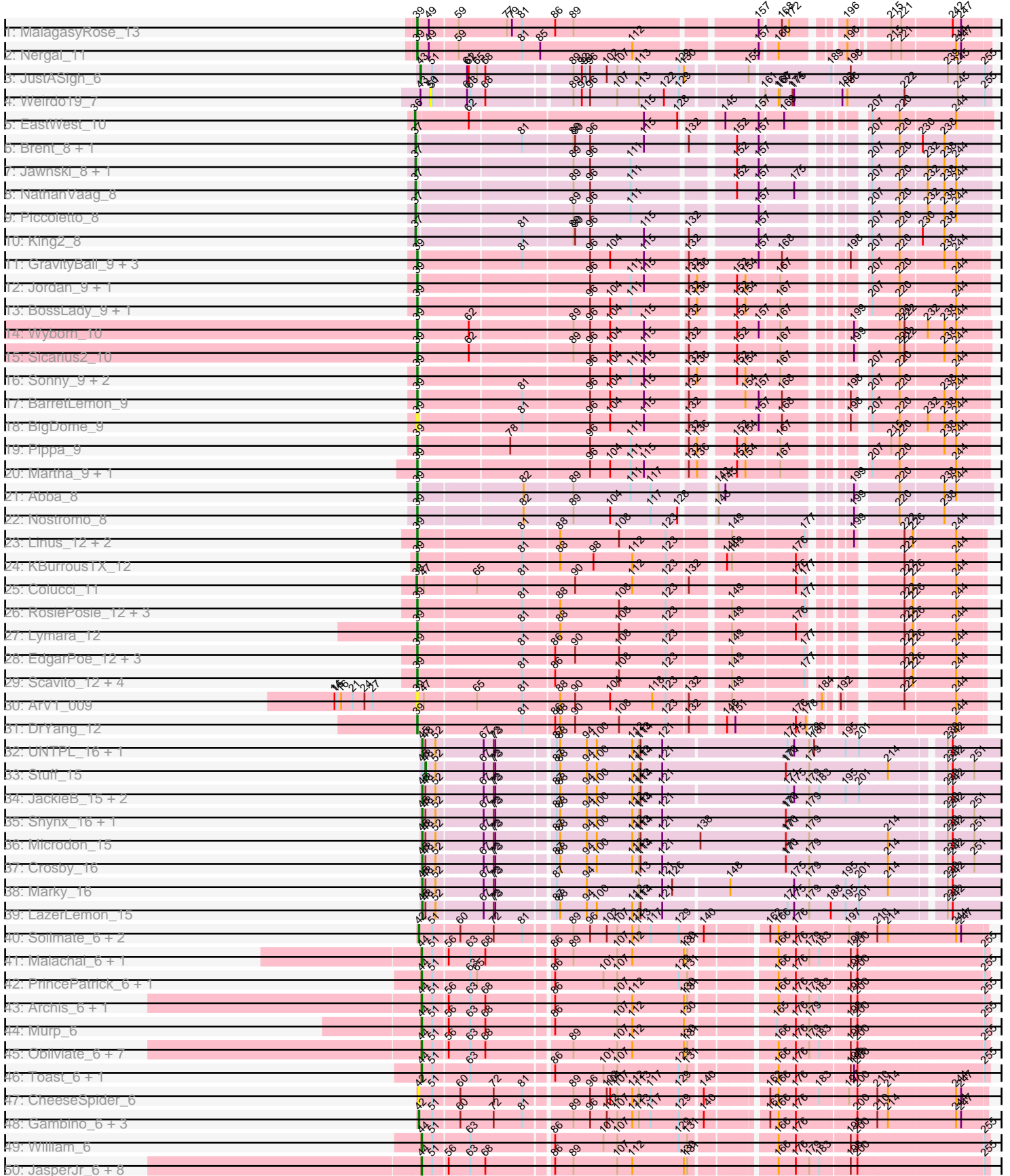
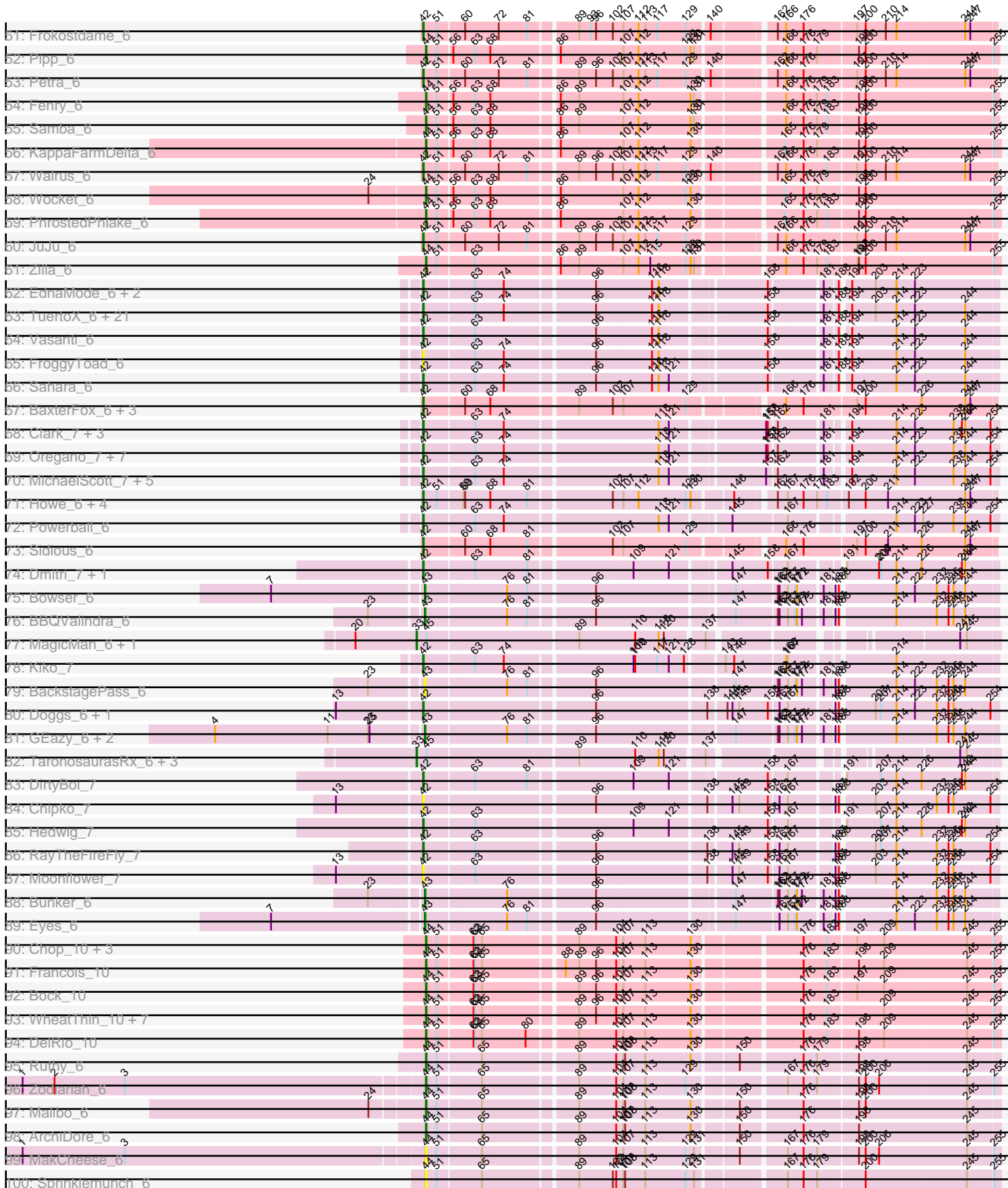


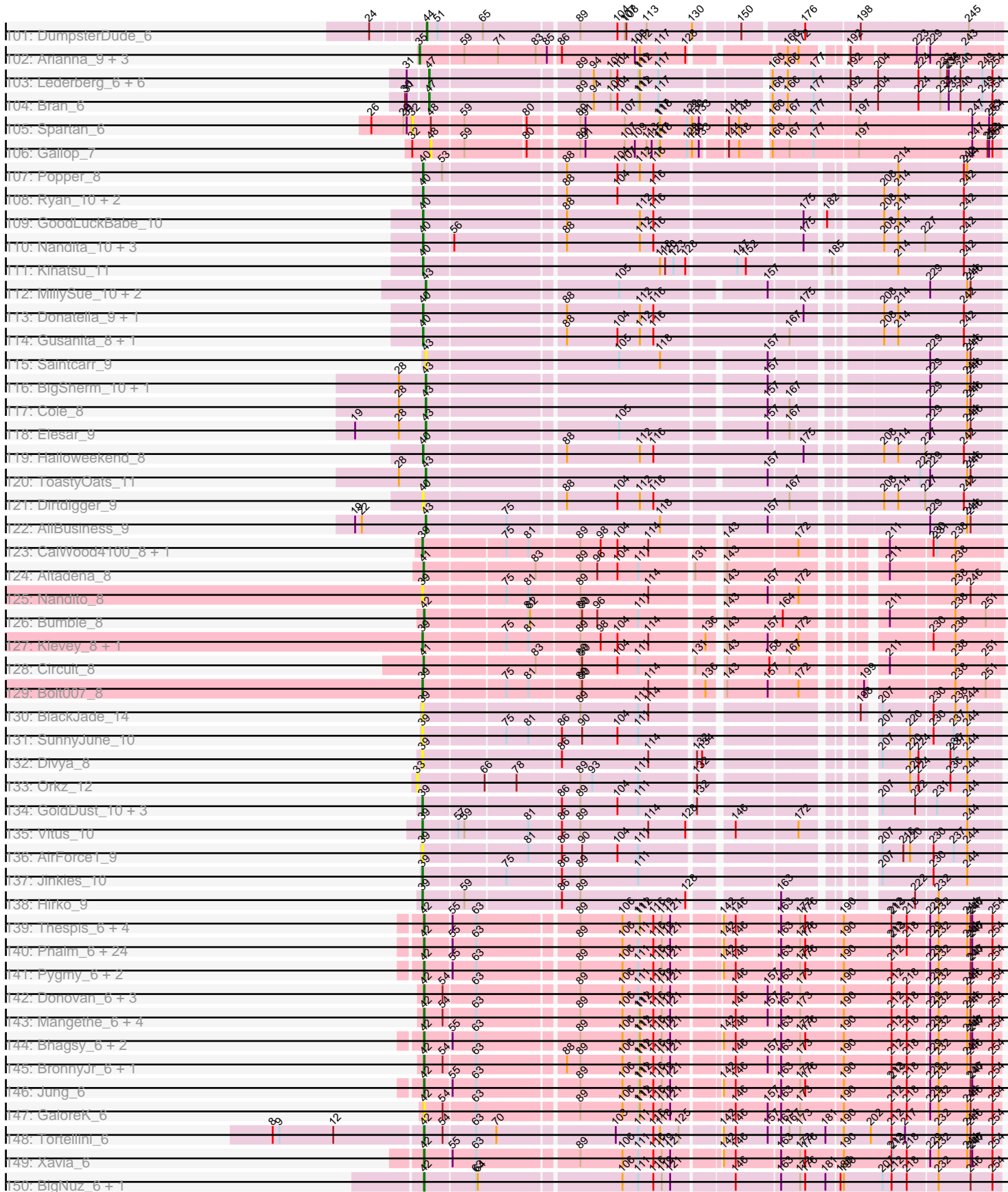
Pham 302996



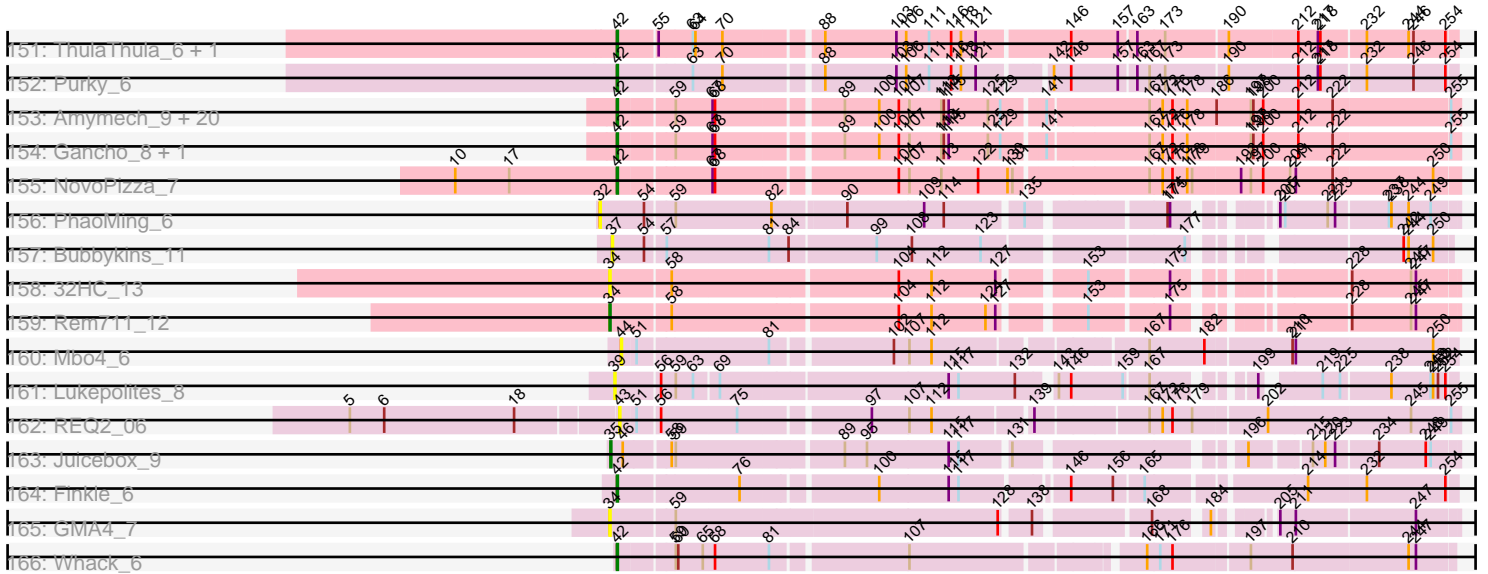
Pham 302996



Pham 302996



Pham 302996



Note: Tracks are now grouped by subcluster and scaled. Switching in subcluster is indicated by changes in track color. Track scale is now set by default to display the region 30 bp upstream of start 1 to 30 bp downstream of the last possible start. If this default region is judged to be packed too tightly with annotated starts, the track will be further scaled to only show that region of the ORF with annotated starts. This action will be indicated by adding "Zoomed" to the title. For starts, yellow indicates the location of called starts comprised solely of Glimmer/GeneMark auto-annotations, green indicates the location of called starts with at least 1 manual gene annotation.

Pham 302996 Report

This analysis was run 06/08/26 on database version 649.

Pham number 302996 has 366 members, 51 are drafts.

Phages represented in each track:

- Track 1 : MalagasyRose_13
- Track 2 : Nergal_11
- Track 3 : JustASigh_6
- Track 4 : Weirdo19_7
- Track 5 : EastWest_10
- Track 6 : Brent_8, Franzy_8
- Track 7 : Jawnski_8, Beans_8
- Track 8 : NathanVaag_8
- Track 9 : Piccoletto_8
- Track 10 : King2_8
- Track 11 : GravityBall_9, Timinator_9, LeeroyJ_9, StevieBAY_9
- Track 12 : Jordan_9, Zartrosa_9
- Track 13 : BossLady_9, Grekaycon_9
- Track 14 : Wyborn_10
- Track 15 : Sicarius2_10
- Track 16 : Sonny_9, Shade_9, JKerns_9
- Track 17 : BarretLemon_9
- Track 18 : BigDome_9
- Track 19 : Pippa_9
- Track 20 : Martha_9, TaeYoung_9
- Track 21 : Abba_8
- Track 22 : Nostromo_8
- Track 23 : Linus_12, JayCookie_12, PrincessTrina_12
- Track 24 : KBurroustX_12
- Track 25 : Colucci_11
- Track 26 : RosiePosie_12, Chubster_12, Chocolat_12, MoyaNatalis_12
- Track 27 : Lymara_12
- Track 28 : EdgarPoe_12, Tophat_12, Chipper1996_120, Conboy_12
- Track 29 : Scavito_12, Mordred_12, HumptyDumpty_12, JaNo_12, Kabreeze_12
- Track 30 : ArV1_009
- Track 31 : DrYang_12
- Track 32 : UNTPL_16, Bogota_16
- Track 33 : Stuff_15
- Track 34 : JackieB_15, Henoccus_16, Araceli_16
- Track 35 : Shynx_16, Intolerant_15
- Track 36 : Microdon_15
- Track 37 : Crosby_16

- Track 38 : Marky_16
- Track 39 : LazerLemon_15
- Track 40 : Soilmate_6, CarolAnn_6, Blino_6
- Track 41 : Malachai_6, Begonia_6
- Track 42 : PrincePatrick_6, Fairfaxidum_6
- Track 43 : Archis_6, UmaThurman_6
- Track 44 : Murp_6
- Track 45 : Obliviate_6, Utz_6, BlingBling_6, Hitter_6, Jalammah_6, Lysidious_6, Mellie_6, ZiggyZoo_6
- Track 46 : Toast_6, PCoral7_6
- Track 47 : CheeseSpider_6
- Track 48 : Gambino_6, Blueberry_6, MissRona_6, Azula_6
- Track 49 : William_6
- Track 50 : JasperJr_6, Wisp_6, Guacamole_6, Zarbodnamra_6, Melba_6, CaptainKirk2_6, MintFen_6, Barco_6, Delian_6
- Track 51 : Frokostdame_6
- Track 52 : Pipp_6
- Track 53 : Petra_6
- Track 54 : Fenry_6
- Track 55 : Samba_6
- Track 56 : KappaFarmDelta_6
- Track 57 : Walrus_6
- Track 58 : Wocket_6
- Track 59 : PhrostedPhlake_6
- Track 60 : JuJu_6
- Track 61 : Zilla_6
- Track 62 : EdnaMode_6, Nettuno_6, Lamberg_6
- Track 63 : TuertoX_6, GemG_6, Denise_6, Attis_6, Yinzer_6, Ebert_6, Matteo_6, Cynthia_6, Pickett_6, SoilAssassin_6, JCole_6, Clap_6, Yeet412_6, Savage_6, Bjanes7_6, Haley23_6, Mocha12_6, LordFarquaad_6, Whiteclaw_6, Gizermo_6, Sproutie_6, Jalleen_6
- Track 64 : Vasanti_6
- Track 65 : FroggyToad_6
- Track 66 : Sahara_6
- Track 67 : BaxterFox_6, Yeezy_6, PantheRoc_6, Ohgeesy_6
- Track 68 : Clark_7, PhriskyACE_6, Dorito_6, Annalisa_7
- Track 69 : Oregano_7, Dolores_7, Sekhmet_7, Samman98_7, WinkNick_7, Invectra_7, DobbysSock_6, Thimann_7
- Track 70 : MichaelScott_7, Suerte_6, Tuti_7, Easley_7, Beenie_7, Rizz_8
- Track 71 : Howe_6, Twinkle_6, Adora_6, Shlim410_6, Hortense_6
- Track 72 : Powerball_6
- Track 73 : Sidious_6
- Track 74 : Dmitri_7, PatriciaStar_6
- Track 75 : Bowser_6
- Track 76 : BBQValindra_6
- Track 77 : MagicMan_6, Schnabeltier_6
- Track 78 : Kiko_7
- Track 79 : BackstagePass_6
- Track 80 : Doggs_6, Coriander_7
- Track 81 : GEazy_6, NaLuna_6, HannahD_6
- Track 82 : TaronosaurusRx_6, Opie_6, Jecs_6, ZAYM_6
- Track 83 : DirtyBoi_7
- Track 84 : Chipko_7

- Track 85 : Hedwig_7
- Track 86 : RayTheFireFly_7
- Track 87 : Moonflower_7
- Track 88 : Bunker_6
- Track 89 : Eyes_6
- Track 90 : Chop_10, GrandSlam_10, Ayotoya_10, Hamood_10
- Track 91 : Francois_10
- Track 92 : Bock_10
- Track 93 : WheatThin_10, Parada_10, Nadeem_10, Brylie_10, NancyRae_10, Mulch_10, Pimento_10, BetterKatz_10
- Track 94 : DelRio_10
- Track 95 : Ruthy_6
- Track 96 : Zodiariah_6
- Track 97 : Malibo_6
- Track 98 : ArchiDore_6
- Track 99 : MakCheese_6
- Track 100 : Sprinklemunch_6
- Track 101 : DumpsterDude_6
- Track 102 : Arianna_9, Colleen_9, Poushou_9, TouchMeNot_9
- Track 103 : Lederberg_6, Troy_6, Stiles_6, StAB_6, Adelaide_6, SamW_6, Dina_6
- Track 104 : Bran_6
- Track 105 : Spartan_6
- Track 106 : Gallop_7
- Track 107 : Popper_8
- Track 108 : Ryan_10, Zaheer_10, Yonex_10
- Track 109 : GoodLuckBabe_10
- Track 110 : Nandita_10, Schism_10, Lenoxika_10, Guinevere_10
- Track 111 : Kihatsu_11
- Track 112 : MillySue_10, Julie_10, Toodles_10
- Track 113 : Donatella_9, Ichiang_8
- Track 114 : Gusanita_8, IsHungry_10
- Track 115 : Saintcarr_9
- Track 116 : BigSherm_10, QuinnAvery_10
- Track 117 : Cole_8
- Track 118 : Elesar_9
- Track 119 : Halloweekend_8
- Track 120 : ToastyOats_11
- Track 121 : Dirtdigger_9
- Track 122 : AllBusiness_9
- Track 123 : CalWood4100_8, Lilmac1015_8
- Track 124 : Altadena_8
- Track 125 : Nandito_8
- Track 126 : Bumble_8
- Track 127 : Klevey_8, Prairie_8
- Track 128 : Circuit_8
- Track 129 : Bolt007_8
- Track 130 : BlackJade_14
- Track 131 : SunnyJune_10
- Track 132 : Divya_8
- Track 133 : Orkz_12
- Track 134 : GoldDust_10, Music_10, Gooberta_10, Vibaki_10
- Track 135 : Vitus_10
- Track 136 : AirForce1_9

- Track 137 : Jinkies_10
- Track 138 : Hirko_9
- Track 139 : Thespis_6, Brusacoram_6, Bunnies_6, Atcoo_6, Ksquared_6
- Track 140 : Phalm_6, Polkaroo_6, KilKor_6, HUHilltop_6, StressBall_6, Dynamo_6, Gavriela_6, Malithi_6, Vidya_6, Glaske_6, Chubbello_6, Bartholomew_6, Fishburne_6, StevieRay_6, FirstPlacePfu_6, Necropolis_6, Venti_6, Etoile_6, Camster_6, Megiddo_6, Phineas_6, GreaseLightnin_6, CactusJack_6, Zilizebeth_6, Kari_6
- Track 141 : Pygmy_6, Bogie_6, Shipwreck_6
- Track 142 : Donovan_6, Langerak_6, Sonah_6, Juniormint_6
- Track 143 : Mangethe_6, Majeke_6, Arib1_6, Phegasus_6, Jebeks_6
- Track 144 : Bhagsy_6, PeanutPie_6, Willsammy_6
- Track 145 : BronnyJr_6, Techage_6
- Track 146 : Jung_6
- Track 147 : GaloreK_6
- Track 148 : Tortellini_6
- Track 149 : Xavia_6
- Track 150 : BigNuz_6, Nazo_6
- Track 151 : ThulaThula_6, Phayonce_6
- Track 152 : Purky_6
- Track 153 : Amymech_9, Webster2_9, Evanesce_9, Wishmaker_9, LilHazelnut_9, OBUpride_9, Ein37_9, Luna22_9, Daegal_10, Dewey_9, Ubuntu_9, Hail_9, BloominB_9, Giles_9, Luke_9, Hadrien_9, Forge_9, Kinbote_9, HH92_9, DeepSoil15_9, Amochick_9
- Track 154 : Gancho_8, Gravaillia_9
- Track 155 : NovoPizza_7
- Track 156 : PhaoMing_6
- Track 157 : Bubbykins_11
- Track 158 : 32HC_13
- Track 159 : Rem711_12
- Track 160 : Mbo4_6
- Track 161 : Lukepolites_8
- Track 162 : REQ2_06
- Track 163 : Juicebox_9
- Track 164 : Finkle_6
- Track 165 : GMA4_7
- Track 166 : Whack_6

Summary of Final Annotations (See graph section above for start numbers):

The start number called the most often in the published annotations is 42, it was called in 146 of the 315 non-draft genes in the pham.

Genes that call this "Most Annotated" start:

- Adora_6, Amochick_9, Amymech_9, Annalisa_7, Arib1_6, Atcoo_6, Attis_6, Azula_6, Bartholomew_6, BaxterFox_6, Beenie_7, Bhagsy_6, BigNuz_6, Bjaner7_6, Blino_6, BloominB_9, Blueberry_6, Bogie_6, BronnyJr_6, Brusacoram_6, Bumble_8, Bunnies_6, CactusJack_6, Camster_6, CarolAnn_6, CheeseSpider_6, Chipko_7, Chubbello_6, Clap_6, Clark_7, Coriander_7, Cynthia_6, Daegal_10, DeepSoil15_9, Denise_6, Dewey_9, DirtyBoi_7, Dmitri_7, DobbysSock_6, Doggs_6, Dolores_7,

Donovan_6, Dorito_6, Dynamo_6, Easley_7, Ebert_6, EdnaMode_6, Ein37_9, Etoile_6, Evanesce_9, Finkle_6, FirstPlacePfu_6, Fishburne_6, Forge_9, FroggyToad_6, Frokostdame_6, GaloreK_6, Gambino_6, Gancho_8, Gavriela_6, GemG_6, Giles_9, Gizermo_6, Glaske_6, Gravaiilla_9, GreaseLightnin_6, HH92_9, HUHilltop_6, Hadrien_9, Hail_9, Haley23_6, Hedwig_7, Hortense_6, Howe_6, Invectra_7, JCole_6, Jalleen_6, Jebeks_6, JuJu_6, Jung_6, Juniormint_6, Kari_6, Kiko_7, KilKor_6, Kinbote_9, Ksquared_6, Lamberg_6, Langerak_6, LilHazelNut_9, LordFarquaad_6, Luke_9, Luna22_9, Majeke_6, Malithi_6, Mangethe_6, Matteo_6, Megiddo_6, MichaelScott_7, MissRona_6, Mocha12_6, Moonflower_7, Nazo_6, Necropolis_6, Nettuno_6, NovoPizza_7, OBUpride_9, Ohgeesy_6, Oregano_7, PantheRoc_6, PatriciaStar_6, PeanutPie_6, Petra_6, Phalm_6, Phayonce_6, Phegasus_6, Phineas_6, PhriskyACE_6, Pickett_6, Polkaroo_6, Powerball_6, Purky_6, Pygmy_6, RayTheFireFly_7, Rizz_8, Sahara_6, Samman98_7, Savage_6, Sekhmet_7, Shipwreck_6, Shlim410_6, Sidious_6, SoilAssassin_6, Soilmate_6, Sonah_6, Sproutie_6, StevieRay_6, StressBall_6, Suerte_6, Techage_6, Thespi_6, Thimann_7, ThulaThula_6, Tortellini_6, TuertoX_6, Tuti_7, Twinkle_6, Ubuntu_9, Vasanti_6, Venti_6, Vidya_6, Walrus_6, Webster2_9, Whack_6, Whiteclaw_6, Willsammy_6, WinkNick_7, Wishmaker_9, Xavia_6, Yeet412_6, Yeezy_6, Yinzer_6, Zilizebeth_6,

Genes that have the "Most Annotated" start but do not call it:

-

Genes that do not have the "Most Annotated" start:

- 32HC_13, Abba_8, Adelaide_6, AirForce1_9, AllBusiness_9, Altadena_8, ArV1_009, Araceli_16, ArchiDore_6, Archis_6, Arianna_9, Ayotoya_10, BBQValindra_6, BackstagePass_6, Barco_6, BarretLemon_9, Beans_8, Begonia_6, BetterKatz_10, BigDome_9, BigSherm_10, BlackJade_14, BlingBling_6, Bock_10, Bogota_16, Bolt007_8, BossLady_9, Bowser_6, Bran_6, Brent_8, Brylie_10, Bubbykins_11, Bunker_6, CalWood4100_8, CaptainKirk2_6, Chipper1996_120, Chocolat_12, Chop_10, Chubster_12, Circuit_8, Cole_8, Colleen_9, Colucci_11, Conboy_12, Crosby_16, DelRio_10, Delian_6, Dina_6, DirtDigger_9, Divya_8, Donatella_9, DrYang_12, DumpsterDude_6, EastWest_10, EdgarPoe_12, Elesar_9, Eyes_6, Fairfaxidum_6, Fenry_6, Francois_10, Franzy_8, GEazy_6, GMA4_7, Gallop_7, GoldDust_10, Gooberta_10, GoodLuckBabe_10, GrandSlam_10, GravityBall_9, Grekaycon_9, Guacamole_6, Guinevere_10, Gusanita_8, Halloween_8, Hamood_10, HannahD_6, Henoccus_16, Hirko_9, Hitter_6, HumptyDumpty_12, Ichiang_8, Intolerant_15, IsHungry_10, JKerns_9, JaNo_12, JackieB_15, Jalammah_6, JasperJr_6, Jawnski_8, JayCookie_12, Jecs_6, Jinkies_10, Jordan_9, Juicebox_9, Julie_10, JustASigh_6, KBurroustX_12, Kabreeze_12, KappaFarmDelta_6, Kihatsu_11, King2_8, Klevey_8, LazerLemon_15, Lederberg_6, LeeroyJ_9, Lenoxika_10, Lilmac1015_8, Linus_12, Lukepolites_8, Lymara_12, Lysidious_6, MagicMan_6, MakCheese_6, Malachai_6, MalagasyRose_13, Malibo_6, Marky_16, Martha_9, Mbo4_6, Melba_6, Mellie_6, Microdon_15, MillySue_10, MintFen_6, Mordred_12, MoyaNatalis_12, Mulch_10, Murp_6, Music_10, NaLuna_6, Nadeem_10, NancyRae_10, Nandita_10, Nandito_8, NathanVaag_8, Nergal_11, Nostromo_8, Obliviate_6, Opie_6, Orkz_12, PCoral7_6, Parada_10, PhaoMing_6, PhrostedPhlake_6, Piccoletto_8, Pimento_10, Pipp_6, Pippa_9, Popper_8, Poushou_9, Prairie_8, PrincePatrick_6, PrincessTrina_12, QuinnAvery_10, REQ2_06, Rem711_12, RosiePosie_12, Ruthy_6, Ryan_10, Saintcarr_9, SamW_6, Samba_6, Scavito_12, Schism_10, Schnabeltier_6, Shade_9, Shynx_16, Sicarius2_10, Sonny_9, Spartan_6, Sprinklemunch_6, StAB_6, StevieBAY_9, Stiles_6, Stuff_15, SunnyJune_10, TaeYoung_9, TaronosaurusRx_6,

Timinator_9, Toast_6, ToastyOats_11, Toodles_10, Tophat_12, TouchMeNot_9, Troy_6, UNTPL_16, UmaThurman_6, Utz_6, Vibaki_10, Vitus_10, Weirdo19_7, WheatThin_10, William_6, Wisp_6, Wocket_6, Wyborn_10, Yonex_10, ZAYM_6, Zaheer_10, Zarbodnamra_6, Zartrosa_9, ZiggyZoo_6, Zilla_6, Zodiariah_6,

Summary by start number:

Start 32:

- Found in 3 of 366 (0.8%) of genes in pham
- No Manual Annotations of this start.
- Called 66.7% of time when present
- Phage (with cluster) where this start called: PhaoMing_6 (UNK), Spartan_6 (ES),

Start 33:

- Found in 7 of 366 (1.9%) of genes in pham
- Manual Annotations of this start: 4 of 315
- Called 100.0% of time when present
- Phage (with cluster) where this start called: Jecs_6 (DB), MagicMan_6 (DB), Opie_6 (DB), Orkz_12 (FL), Schnabeltier_6 (DB), TaronosaurusRx_6 (DB), ZAYM_6 (DB),

Start 34:

- Found in 3 of 366 (0.8%) of genes in pham
- Manual Annotations of this start: 1 of 315
- Called 100.0% of time when present
- Phage (with cluster) where this start called: 32HC_13 (Z), GMA4_7 (singleton), Rem711_12 (Z),

Start 35:

- Found in 5 of 366 (1.4%) of genes in pham
- Manual Annotations of this start: 5 of 315
- Called 100.0% of time when present
- Phage (with cluster) where this start called: Arianna_9 (EO), Colleen_9 (EO), Juicebox_9 (singleton), Poushou_9 (EO), TouchMeNot_9 (EO),

Start 36:

- Found in 1 of 366 (0.3%) of genes in pham
- Manual Annotations of this start: 1 of 315
- Called 100.0% of time when present
- Phage (with cluster) where this start called: EastWest_10 (AO),

Start 37:

- Found in 8 of 366 (2.2%) of genes in pham
- Manual Annotations of this start: 7 of 315
- Called 100.0% of time when present
- Phage (with cluster) where this start called: Beans_8 (AO1), Brent_8 (AO1), Bubbykins_11 (UNK), Franzy_8 (AO1), Jawnski_8 (AO1), King2_8 (AO1), NathanVaag_8 (AO1), Piccoletto_8 (AO1),

Start 38:

- Found in 1 of 366 (0.3%) of genes in pham
- Manual Annotations of this start: 1 of 315
- Called 100.0% of time when present
- Phage (with cluster) where this start called: Colucci_11 (AR),

Start 39:

- Found in 60 of 366 (16.4%) of genes in pham
- Manual Annotations of this start: 48 of 315
- Called 100.0% of time when present
- Phage (with cluster) where this start called: Abba_8 (AO3), AirForce1_9 (FL), ArV1_009 (AR), BarretLemon_9 (AO2), BigDome_9 (AO2), BlackJade_14 (FL), Bolt007_8 (FH), BossLady_9 (AO2), CalWood4100_8 (FH), Chipper1996_120 (AR), Chocolat_12 (AR), Chubster_12 (AR), Conboy_12 (AR), Divya_8 (FL), DrYang_12 (AR), EdgarPoe_12 (AR), GoldDust_10 (FL), Gooberta_10 (FL), GravityBall_9 (AO2), Grekaycon_9 (AO2), Hirko_9 (FL), HumptyDumpty_12 (AR), JKerns_9 (AO2), JaNo_12 (AR), JayCookie_12 (AR), Jinkies_10 (FL), Jordan_9 (AO2), KBurrousTX_12 (AR), Kabreeze_12 (AR), Klevey_8 (FH), LeeroyJ_9 (AO2), Lilmac1015_8 (FH), Linus_12 (AR), Lukepolites_8 (singleton), Lymara_12 (AR), MalagasyRose_13 (AG), Martha_9 (AO2), Mordred_12 (AR), MoyaNatalis_12 (AR), Music_10 (FL), Nandito_8 (FH), Nergal_11 (AG), Nostromo_8 (AO3), Pippa_9 (AO2), Prairie_8 (FH), PrincessTrina_12 (AR), RosiePosie_12 (AR), Scavito_12 (AR), Shade_9 (AO2), Sicarius2_10 (AO2), Sonny_9 (AO2), StevieBAY_9 (AO2), SunnyJune_10 (FL), TaeYoung_9 (AO2), Timinator_9 (AO2), Tophat_12 (AR), Vibaki_10 (FL), Vitus_10 (FL), Wyborn_10 (AO2), Zartrosa_9 (AO2),

Start 40:

- Found in 16 of 366 (4.4%) of genes in pham
- Manual Annotations of this start: 13 of 315
- Called 100.0% of time when present
- Phage (with cluster) where this start called: Dirtdigger_9 (FF), Donatella_9 (FF), GoodLuckBabe_10 (FF), Guinevere_10 (FF), Gusanita_8 (FF), Halloween_8 (FF), Ichiang_8 (FF), IsHungry_10 (FF), Kihatsu_11 (FF), Lenoxika_10 (FF), Nandita_10 (FF), Popper_8 (FF), Ryan_10 (FF), Schism_10 (FF), Yonex_10 (FF), Zaheer_10 (FF),

Start 41:

- Found in 2 of 366 (0.5%) of genes in pham
- Manual Annotations of this start: 2 of 315
- Called 100.0% of time when present
- Phage (with cluster) where this start called: Altadena_8 (FH), Circuit_8 (FH),

Start 42:

- Found in 162 of 366 (44.3%) of genes in pham
- Manual Annotations of this start: 146 of 315
- Called 100.0% of time when present
- Phage (with cluster) where this start called: Adora_6 (CZ4), Amochick_9 (Q), Amymech_9 (Q), Annalisa_7 (CZ4), Arib1_6 (P1), Atcoo_6 (P1), Attis_6 (CZ2), Azula_6 (CV), Bartholomew_6 (P1), BaxterFox_6 (CZ3), Beenie_7 (CZ4), Bhagsy_6 (P1), BigNuz_6 (P4), Bjaner7_6 (CZ2), Blino_6 (CV), BloominB_9 (Q), Blueberry_6 (CV), Bogie_6 (P1), BronnyJr_6 (P1), Brusacoram_6 (P1), Bumble_8 (FH), Bunnies_6 (P1), CactusJack_6 (P1), Camster_6 (P1), CarolAnn_6 (CV), CheeseSpider_6 (CV), Chipko_7 (DB), Chubbello_6 (P1), Clap_6 (CZ2), Clark_7 (CZ4), Coriander_7 (DB), Cynthia_6 (CZ2), Daegal_10 (Q), DeepSoil15_9 (Q), Denise_6 (CZ5), Dewey_9 (Q), DirtyBoi_7 (DB), Dmitri_7 (DB), DobbysSock_6 (CZ4), Doggs_6 (DB), Dolores_7 (CZ4), Donovan_6 (P1), Dorito_6 (CZ4), Dynamo_6 (P1), Easley_7 (CZ4), Ebert_6 (CZ2), EdnaMode_6 (CZ2), Ein37_9 (Q), Etoile_6 (P1), Evanesce_9 (Q), Finkle_6 (singleton), FirstPlacePfu_6 (P1), Fishburne_6 (P1),

Forge_9 (Q), FroggyToad_6 (CZ2), Frokostdame_6 (CV), GaloreK_6 (P1), Gambino_6 (CV), Gancho_8 (Q), Gavriela_6 (P1), GemG_6 (CZ2), Giles_9 (Q), Gizermo_6 (CZ2), Glaske_6 (P1), Gravaillia_9 (Q), GreaseLightnin_6 (P1), HH92_9 (Q), HUHilltop_6 (P1), Hadrien_9 (Q), Hail_9 (Q), Haley23_6 (CZ2), Hedwig_7 (DB), Hortense_6 (CZ4), Howe_6 (CZ4), Invectra_7 (CZ4), JCole_6 (CZ2), Jalleen_6 (CZ2), Jebeks_6 (P1), JuJu_6 (CV), Jung_6 (P1), Juniormint_6 (P1), Kari_6 (P1), Kiko_7 (DB), KilKor_6 (P1), Kinbote_9 (Q), Ksquared_6 (P1), Lamberg_6 (CZ2), Langerak_6 (P1), LilHazelNut_9 (Q), LordFarquaad_6 (CZ2), Luke_9 (Q), Luna22_9 (Q), Majeke_6 (P1), Malithi_6 (P1), Mangethe_6 (P1), Matteo_6 (CZ2), Megiddo_6 (P1), MichaelScott_7 (CZ4), MissRona_6 (CV), Mocha12_6 (CZ2), Moonflower_7 (DB), Nazo_6 (P4), Necropolis_6 (P1), Nettuno_6 (CZ2), NovoPizza_7 (Q), OBUpride_9 (Q), Ohgeesy_6 (CZ), Oregano_7 (CZ4), PantheRoc_6 (CZ3), PatriciaStar_6 (DB), PeanutPie_6 (P1), Petra_6 (CV), Phalm_6 (P1), Phayonce_6 (P5), Phegasus_6 (P1), Phineas_6 (P1), PhriskyACE_6 (CZ4), Pickett_6 (CZ2), Polkaroo_6 (P1), Powerball_6 (CZ4), Purky_6 (P6), Pygmy_6 (P1), RayTheFireFly_7 (DB), Rizz_8 (CZ4), Sahara_6 (CZ2), Samman98_7 (CZ4), Savage_6 (CZ2), Sekhmet_7 (CZ4), Shipwreck_6 (P1), Shlim410_6 (CZ4), Sidious_6 (CZ7), SoilAssassin_6 (CZ2), Soilmate_6 (CV), Sonah_6 (P1), Sproutie_6 (CZ2), StevieRay_6 (P1), StressBall_6 (P1), Suerte_6 (CZ4), Techage_6 (P1), Thespis_6 (P1), Thimann_7 (CZ4), ThulaThula_6 (P5), Tortellini_6 (P2), TuertoX_6 (CZ2), Tuti_7 (CZ4), Twinkle_6 (CZ4), Ubuntu_9 (Q), Vasanti_6 (CZ2), Venti_6 (P1), Vidya_6 (P1), Walrus_6 (CV), Webster2_9 (Q), Whack_6 (singleton), Whiteclaw_6 (CZ2), Willsammy_6 (P1), WinkNick_7 (CZ4), Wishmaker_9 (Q), Xavia_6 (P3), Yeet412_6 (CZ2), Yeezy_6 (CZ3), Yinzer_6 (CZ2), Zilizebeth_6 (P1),

Start 43:

- Found in 21 of 366 (5.7%) of genes in pham
- Manual Annotations of this start: 14 of 315
- Called 95.2% of time when present
- Phage (with cluster) where this start called: AllBusiness_9 (FF), BBQValindra_6 (DB), BackstagePass_6 (DB), BigSherm_10 (FF), Bowser_6 (DB), Bunker_6 (DB), Cole_8 (FF), Elesar_9 (FF), Eyes_6 (DB), GEazy_6 (DB), HannahD_6 (DB), Julie_10 (FF), JustASigh_6 (AH), MillySue_10 (FF), NaLuna_6 (DB), QuinnAvery_10 (FF), REQ2_06 (singleton), Saintcarr_9 (FF), ToastyOats_11 (FF), Toodles_10 (FF),

Start 44:

- Found in 57 of 366 (15.6%) of genes in pham
- Manual Annotations of this start: 53 of 315
- Called 100.0% of time when present
- Phage (with cluster) where this start called: ArchiDore_6 (DW), Archis_6 (CV), Ayotoya_10 (DI), Barco_6 (CV), Begonia_6 (CV), BetterKatz_10 (DI), BlingBling_6 (CV), Bock_10 (DI), Brylie_10 (DI), CaptainKirk2_6 (CV), Chop_10 (DI), DelRio_10 (DI), Delian_6 (CV), DumpsterDude_6 (DW), Fairfaxidum_6 (CV), Fenry_6 (CV), Francois_10 (DI), GrandSlam_10 (DI), Guacamole_6 (CV), Hamood_10 (DI), Hitter_6 (CV), Jalammah_6 (CV), JasperJr_6 (CV), KappaFarmDelta_6 (CV), Lysidious_6 (CV), MakCheese_6 (DW), Malachai_6 (CV), Malibo_6 (DW), Mbo4_6 (singleton), Melba_6 (CV), Mellie_6 (CV), MintFen_6 (CV), Mulch_10 (DI), Murp_6 (CV), Nadeem_10 (DI), NancyRae_10 (DI), Obliviate_6 (CV), PCoral7_6 (CV), Parada_10 (DI), PhrostedPhlake_6 (CV), Pimento_10 (DI), Pipp_6 (CV), PrincePatrick_6 (CV), Ruthy_6 (DW), Samba_6 (CV), Sprinklemunch_6 (DW), Toast_6 (CV), UmaThurman_6 (CV), Utz_6 (CV), WheatThin_10 (DI), William_6 (CV), Wisp_6 (CV), Wocket_6 (CV), Zarbodnamra_6 (CV), ZiggyZoo_6 (CV), Zilla_6 (CV), Zodiariah_6 (DW),

Start 45:

- Found in 18 of 366 (4.9%) of genes in pham
- Manual Annotations of this start: 11 of 315
- Called 61.1% of time when present
- Phage (with cluster) where this start called: Araceli_16 (BH), Bogota_16 (BH), Crosby_16 (BH), Henoccus_16 (BH), Intolerant_15 (BH), JackieB_15 (BH), LazerLemon_15 (BH), Marky_16 (BH), Microdon_15 (BH), Shynx_16 (BH), UNTPL_16 (BH),

Start 47:

- Found in 10 of 366 (2.7%) of genes in pham
- Manual Annotations of this start: 8 of 315
- Called 80.0% of time when present
- Phage (with cluster) where this start called: Adelaide_6 (EP), Bran_6 (EP), Dina_6 (EP), Lederberg_6 (EP), SamW_6 (EP), StAB_6 (EP), Stiles_6 (EP), Troy_6 (EP),

Start 48:

- Found in 14 of 366 (3.8%) of genes in pham
- Manual Annotations of this start: 1 of 315
- Called 14.3% of time when present
- Phage (with cluster) where this start called: Gallop_7 (ES), Stuff_15 (BH),

Start 50:

- Found in 1 of 366 (0.3%) of genes in pham
- No Manual Annotations of this start.
- Called 100.0% of time when present
- Phage (with cluster) where this start called: Weirido19_7 (AH),

Summary by clusters:

There are 34 clusters represented in this pham: singleton, DI, CZ2, CZ3, BH, CZ7, CZ4, CZ5, FF, FH, DW, FL, Z, P4, CV, AH, P2, P3, EO, P1, P6, AG, P5, DB, AO, Q, CZ, AR, AO3, AO2, AO1, UNK, EP, ES,

Info for manual annotations of cluster AG:

- Start number 39 was manually annotated 2 times for cluster AG.

Info for manual annotations of cluster AH:

- Start number 43 was manually annotated 1 time for cluster AH.

Info for manual annotations of cluster AO:

- Start number 36 was manually annotated 1 time for cluster AO.

Info for manual annotations of cluster AO1:

- Start number 37 was manually annotated 7 times for cluster AO1.

Info for manual annotations of cluster AO2:

- Start number 39 was manually annotated 17 times for cluster AO2.

Info for manual annotations of cluster AO3:

- Start number 39 was manually annotated 2 times for cluster AO3.

Info for manual annotations of cluster AR:

- Start number 38 was manually annotated 1 time for cluster AR.
- Start number 39 was manually annotated 18 times for cluster AR.

Info for manual annotations of cluster BH:

- Start number 45 was manually annotated 11 times for cluster BH.
- Start number 48 was manually annotated 1 time for cluster BH.

Info for manual annotations of cluster CV:

- Start number 42 was manually annotated 10 times for cluster CV.
- Start number 44 was manually annotated 33 times for cluster CV.

Info for manual annotations of cluster CZ:

- Start number 42 was manually annotated 1 time for cluster CZ.

Info for manual annotations of cluster CZ2:

- Start number 42 was manually annotated 24 times for cluster CZ2.

Info for manual annotations of cluster CZ3:

- Start number 42 was manually annotated 3 times for cluster CZ3.

Info for manual annotations of cluster CZ4:

- Start number 42 was manually annotated 23 times for cluster CZ4.

Info for manual annotations of cluster CZ5:

- Start number 42 was manually annotated 1 time for cluster CZ5.

Info for manual annotations of cluster CZ7:

- Start number 42 was manually annotated 1 time for cluster CZ7.

Info for manual annotations of cluster DB:

- Start number 33 was manually annotated 4 times for cluster DB.
- Start number 42 was manually annotated 7 times for cluster DB.
- Start number 43 was manually annotated 6 times for cluster DB.

Info for manual annotations of cluster DI:

- Start number 44 was manually annotated 15 times for cluster DI.

Info for manual annotations of cluster DW:

- Start number 44 was manually annotated 5 times for cluster DW.

Info for manual annotations of cluster EO:

- Start number 35 was manually annotated 4 times for cluster EO.

Info for manual annotations of cluster EP:

- Start number 47 was manually annotated 8 times for cluster EP.

Info for manual annotations of cluster FF:

- Start number 40 was manually annotated 13 times for cluster FF.
- Start number 43 was manually annotated 7 times for cluster FF.

Info for manual annotations of cluster FH:

- Start number 39 was manually annotated 4 times for cluster FH.
- Start number 41 was manually annotated 2 times for cluster FH.
- Start number 42 was manually annotated 1 time for cluster FH.

Info for manual annotations of cluster FL:

- Start number 39 was manually annotated 5 times for cluster FL.

Info for manual annotations of cluster P1:

- Start number 42 was manually annotated 43 times for cluster P1.

Info for manual annotations of cluster P2:

- Start number 42 was manually annotated 1 time for cluster P2.

Info for manual annotations of cluster P3:

- Start number 42 was manually annotated 1 time for cluster P3.

Info for manual annotations of cluster P4:

- Start number 42 was manually annotated 2 times for cluster P4.

Info for manual annotations of cluster P5:

- Start number 42 was manually annotated 2 times for cluster P5.

Info for manual annotations of cluster P6:

- Start number 42 was manually annotated 1 time for cluster P6.

Info for manual annotations of cluster Q:

- Start number 42 was manually annotated 23 times for cluster Q.

Info for manual annotations of cluster Z:

- Start number 34 was manually annotated 1 time for cluster Z.

Gene Information:

Gene: 32HC_13 Start: 8256, Stop: 9161, Start Num: 34

Candidate Starts for 32HC_13:

(Start: 34 @8256 has 1 MA's), (58, 8325), (104, 8586), (112, 8625), (127, 8703), (153, 8787), (175, 8874), (228, 9036), (245, 9108), (247, 9114),

Gene: Abba_8 Start: 7403, Stop: 8290, Start Num: 39

Candidate Starts for Abba_8:

(Start: 39 @7403 has 48 MA's), (82, 7568), (89, 7649), (111, 7751), (117, 7787), (143, 7880), (145, 7892), (199, 8072), (220, 8132), (238, 8207), (244, 8228),

Gene: Adelaide_6 Start: 5118, Stop: 6050, Start Num: 47

Candidate Starts for Adelaide_6:

(31, 5085), (Start: 47 @5118 has 8 MA's), (89, 5355), (94, 5379), (101, 5409), (104, 5421), (111, 5457), (112, 5460), (117, 5493), (160, 5664), (166, 5691), (177, 5736), (192, 5790), (204, 5838), (224, 5910), (233, 5946), (234, 5958), (235, 5961), (240, 5982), (249, 6021), (254, 6039),

Gene: Adora_6 Start: 4904, Stop: 5836, Start Num: 42

Candidate Starts for Adora_6:

(Start: 42 @4904 has 146 MA's), (51, 4928), (59, 4967), (60, 4970), (68, 5012), (81, 5075), (102, 5210), (107, 5228), (112, 5255), (129, 5339), (130, 5348), (146, 5411), (162, 5468), (167, 5486), (176, 5513), (179, 5537), (183, 5552), (192, 5582), (200, 5612), (211, 5651), (244, 5783), (247, 5792),

Gene: AirForce1_9 Start: 7047, Stop: 7931, Start Num: 39

Candidate Starts for AirForce1_9:

(Start: 39 @7047 has 48 MA's), (81, 7212), (86, 7263), (90, 7299), (104, 7362), (111, 7398), (207, 7731), (216, 7767), (220, 7779), (230, 7815), (237, 7851), (244, 7875),

Gene: AllBusiness_9 Start: 6603, Stop: 7514, Start Num: 43

Candidate Starts for AllBusiness_9:

(19, 6477), (22, 6489), (Start: 43 @6603 has 14 MA's), (75, 6741), (118, 6993), (157, 7155), (229, 7392), (244, 7458), (246, 7464),

Gene: Altadena_8 Start: 7167, Stop: 8045, Start Num: 41

Candidate Starts for Altadena_8:

(Start: 41 @7167 has 2 MA's), (83, 7341), (89, 7413), (96, 7443), (104, 7479), (111, 7515), (131, 7605), (143, 7644), (211, 7860), (238, 7971),

Gene: Amochick_9 Start: 6580, Stop: 7536, Start Num: 42

Candidate Starts for Amochick_9:

(Start: 42 @6580 has 146 MA's), (59, 6640), (67, 6682), (68, 6685), (89, 6823), (100, 6865), (104, 6889), (107, 6901), (113, 6940), (114, 6943), (115, 6949), (125, 6997), (129, 7012), (141, 7057), (167, 7174), (172, 7189), (176, 7201), (178, 7219), (186, 7249), (197, 7291), (198, 7294), (200, 7306), (212, 7348), (222, 7390), (255, 7525),

Gene: Amymech_9 Start: 6586, Stop: 7542, Start Num: 42

Candidate Starts for Amymech_9:

(Start: 42 @6586 has 146 MA's), (59, 6646), (67, 6688), (68, 6691), (89, 6829), (100, 6871), (104, 6895), (107, 6907), (113, 6946), (114, 6949), (115, 6955), (125, 7003), (129, 7018), (141, 7063), (167, 7180), (172, 7195), (176, 7207), (178, 7225), (186, 7255), (197, 7297), (198, 7300), (200, 7312), (212, 7354), (222, 7396), (255, 7531),

Gene: Annalisa_7 Start: 5345, Stop: 6268, Start Num: 42

Candidate Starts for Annalisa_7:

(Start: 42 @5345 has 146 MA's), (63, 5429), (74, 5477), (118, 5732), (121, 5750), (157, 5897), (158, 5900), (162, 5912), (181, 5984), (194, 6017), (214, 6092), (223, 6125), (238, 6191), (242, 6206), (244, 6212), (254, 6257),

Gene: ArV1_009 Start: 8041, Stop: 8937, Start Num: 39

Candidate Starts for ArV1_009:

(14, 7894), (15, 7897), (16, 7906), (21, 7927), (24, 7948), (27, 7963), (Start: 39 @8041 has 48 MA's), (Start: 47 @8053 has 8 MA's), (65, 8140), (81, 8212), (88, 8275), (90, 8302), (104, 8365), (118, 8440), (123, 8464), (132, 8500), (149, 8563), (184, 8698), (192, 8713), (222, 8800), (244, 8887),

Gene: Araceli_16 Start: 11657, Stop: 12625, Start Num: 45

Candidate Starts for Araceli_16:

(Start: 45 @11657 has 11 MA's), (Start: 48 @11663 has 1 MA's), (52, 11681), (67, 11756), (72, 11774), (73, 11777), (87, 11867), (88, 11873), (94, 11921), (100, 11939), (112, 12002), (113, 12014), (114, 12017), (121, 12056), (171, 12266), (175, 12278), (179, 12305), (183, 12323), (195, 12371), (201, 12395), (239, 12530), (242, 12539),

Gene: ArchiDore_6 Start: 5416, Stop: 6348, Start Num: 44

Candidate Starts for ArchiDore_6:

(Start: 44 @5416 has 53 MA's), (51, 5431), (65, 5503), (89, 5653), (104, 5719), (107, 5731), (108, 5734), (113, 5770), (130, 5851), (150, 5923), (176, 6019), (198, 6106), (245, 6292),

Gene: Archis_6 Start: 5209, Stop: 6138, Start Num: 44

Candidate Starts for Archis_6:

(Start: 44 @5209 has 53 MA's), (51, 5224), (56, 5248), (63, 5284), (68, 5308), (86, 5413), (107, 5524), (112, 5551), (130, 5644), (131, 5650), (166, 5782), (176, 5812), (179, 5836), (183, 5851), (198, 5899), (200, 5911), (255, 6130),

Gene: Arianna_9 Start: 7329, Stop: 8234, Start Num: 35

Candidate Starts for Arianna_9:

(Start: 35 @7329 has 5 MA's), (59, 7398), (71, 7455), (83, 7515), (85, 7533), (86, 7551), (109, 7680), (112, 7689), (117, 7722), (128, 7770), (166, 7914), (172, 7932), (192, 7989), (223, 8094), (229, 8112), (243, 8175),

Gene: Arib1_6 Start: 5299, Stop: 6243, Start Num: 42

Candidate Starts for Arib1_6:

(Start: 42 @5299 has 146 MA's), (54, 5332), (63, 5383), (89, 5545), (106, 5620), (111, 5647), (112, 5650), (116, 5674), (119, 5689), (121, 5704), (146, 5800), (157, 5854), (163, 5872), (173, 5905), (190, 5977), (212, 6058), (218, 6085), (229, 6121), (232, 6136), (244, 6187), (246, 6193), (254, 6232),

Gene: Atcoo_6 Start: 5282, Stop: 6226, Start Num: 42

Candidate Starts for Atcoo_6:

(Start: 42 @5282 has 146 MA's), (55, 5327), (63, 5366), (89, 5528), (106, 5603), (111, 5630), (112, 5633), (116, 5657), (119, 5672), (121, 5687), (142, 5762), (146, 5783), (163, 5855), (173, 5888), (176, 5897), (190, 5960), (212, 6041), (213, 6044), (218, 6068), (229, 6104), (232, 6119), (244, 6170), (246, 6176), (247, 6179), (254, 6215),

Gene: Attis_6 Start: 4854, Stop: 5777, Start Num: 42

Candidate Starts for Attis_6:

(Start: 42 @4854 has 146 MA's), (63, 4938), (74, 4986), (96, 5130), (116, 5229), (118, 5241), (158, 5409), (181, 5493), (188, 5514), (194, 5526), (203, 5565), (214, 5601), (223, 5634), (244, 5721),

Gene: Ayotoya_10 Start: 7129, Stop: 8061, Start Num: 44

Candidate Starts for Ayotoya_10:

(Start: 44 @7129 has 53 MA's), (51, 7144), (62, 7201), (63, 7204), (65, 7216), (89, 7366), (104, 7432), (107, 7444), (113, 7483), (130, 7564), (176, 7732), (183, 7771), (197, 7816), (209, 7864), (245, 8005), (255, 8050),

Gene: Azula_6 Start: 5041, Stop: 5970, Start Num: 42

Candidate Starts for Azula_6:

(Start: 42 @5041 has 146 MA's), (51, 5062), (60, 5104), (72, 5161), (81, 5209), (89, 5284), (96, 5314), (102, 5344), (107, 5362), (112, 5389), (113, 5401), (117, 5422), (129, 5473), (140, 5509), (162, 5602), (166, 5617), (176, 5647), (200, 5746), (210, 5782), (214, 5800), (244, 5917), (247, 5926),

Gene: BBQValindra_6 Start: 5200, Stop: 6117, Start Num: 43

Candidate Starts for BBQValindra_6:

(23, 5116), (Start: 43 @5200 has 14 MA's), (76, 5335), (81, 5368), (96, 5473), (147, 5698), (162, 5764), (163, 5767), (167, 5782), (171, 5794), (172, 5797), (175, 5806), (181, 5836), (187, 5851), (188, 5857), (214, 5944), (232, 6010), (236, 6031), (238, 6040), (244, 6061),

Gene: BackstagePass_6 Start: 5177, Stop: 6094, Start Num: 43

Candidate Starts for BackstagePass_6:

(23, 5093), (Start: 43 @5177 has 14 MA's), (76, 5312), (81, 5345), (96, 5450), (147, 5675), (162, 5741), (163, 5744), (167, 5759), (171, 5771), (172, 5774), (175, 5783), (181, 5813), (187, 5828), (188, 5834), (214, 5921), (223, 5954), (232, 5987), (236, 6008), (238, 6017), (244, 6038),

Gene: Barco_6 Start: 5209, Stop: 6138, Start Num: 44

Candidate Starts for Barco_6:

(Start: 44 @5209 has 53 MA's), (51, 5224), (56, 5248), (63, 5284), (68, 5308), (86, 5413), (89, 5446), (107, 5524), (112, 5551), (130, 5644), (131, 5650), (166, 5782), (176, 5812), (179, 5836), (183, 5851), (198, 5899), (200, 5911), (255, 6130),

Gene: BarretLemon_9 Start: 7550, Stop: 8437, Start Num: 39

Candidate Starts for BarretLemon_9:

(Start: 39 @7550 has 48 MA's), (81, 7718), (96, 7832), (104, 7868), (115, 7928), (132, 7997), (154, 8081), (157, 8102), (168, 8138), (198, 8219), (207, 8237), (220, 8285), (238, 8360), (244, 8381),

Gene: Bartholomew_6 Start: 5294, Stop: 6238, Start Num: 42

Candidate Starts for Bartholomew_6:

(Start: 42 @5294 has 146 MA's), (55, 5339), (63, 5378), (89, 5540), (106, 5615), (111, 5642), (116, 5669), (119, 5684), (121, 5699), (142, 5774), (146, 5795), (163, 5867), (173, 5900), (176, 5909), (190, 5972), (212, 6053), (213, 6056), (218, 6080), (229, 6116), (232, 6131), (244, 6182), (246, 6188), (247, 6191), (254, 6227),

Gene: BaxterFox_6 Start: 4895, Stop: 5824, Start Num: 42

Candidate Starts for BaxterFox_6:

(Start: 42 @4895 has 146 MA's), (60, 4958), (68, 5000), (89, 5138), (102, 5198), (107, 5216), (129, 5327), (166, 5471), (176, 5501), (197, 5585), (200, 5600), (226, 5699), (244, 5771), (247, 5780),

Gene: Beans_8 Start: 7217, Stop: 8110, Start Num: 37

Candidate Starts for Beans_8:

(Start: 37 @7217 has 7 MA's), (89, 7472), (96, 7502), (111, 7574), (152, 7736), (157, 7772), (207, 7907), (220, 7955), (232, 8000), (238, 8030), (244, 8051),

Gene: Beenie_7 Start: 5345, Stop: 6268, Start Num: 42

Candidate Starts for Beenie_7:

(Start: 42 @5345 has 146 MA's), (63, 5429), (74, 5477), (118, 5732), (121, 5750), (157, 5897), (162, 5912), (181, 5984), (194, 6017), (214, 6092), (223, 6125), (238, 6191), (244, 6212), (254, 6257),

Gene: Begonia_6 Start: 5212, Stop: 6141, Start Num: 44

Candidate Starts for Begonia_6:

(Start: 44 @5212 has 53 MA's), (51, 5227), (56, 5251), (63, 5287), (68, 5311), (86, 5416), (89, 5449), (107, 5527), (112, 5554), (130, 5647), (131, 5653), (166, 5785), (176, 5815), (179, 5839), (183, 5854), (198, 5902), (200, 5914), (255, 6133),

Gene: BetterKatz_10 Start: 7097, Stop: 8029, Start Num: 44

Candidate Starts for BetterKatz_10:

(Start: 44 @7097 has 53 MA's), (51, 7112), (62, 7169), (63, 7172), (65, 7184), (89, 7334), (96, 7364), (104, 7400), (107, 7412), (113, 7451), (130, 7532), (176, 7700), (183, 7739), (209, 7832), (245, 7973), (255, 8018),

Gene: Bhagsy_6 Start: 5285, Stop: 6229, Start Num: 42

Candidate Starts for Bhagsy_6:

(Start: 42 @5285 has 146 MA's), (55, 5330), (63, 5369), (89, 5531), (106, 5606), (111, 5633), (112, 5636), (116, 5660), (119, 5675), (121, 5690), (142, 5765), (146, 5786), (163, 5858), (173, 5891), (176, 5900), (190, 5963), (212, 6044), (218, 6071), (229, 6107), (232, 6122), (244, 6173), (246, 6179), (247, 6182), (254, 6218),

Gene: BigDome_9 Start: 7537, Stop: 8424, Start Num: 39

Candidate Starts for BigDome_9:

(Start: 39 @7537 has 48 MA's), (81, 7705), (96, 7819), (104, 7855), (115, 7915), (132, 7984), (157, 8089), (168, 8125), (198, 8206), (207, 8224), (220, 8272), (232, 8317), (238, 8347), (244, 8368),

Gene: BigNuz_6 Start: 5266, Stop: 6216, Start Num: 42

Candidate Starts for BigNuz_6:

(Start: 42 @5266 has 146 MA's), (63, 5350), (64, 5353), (106, 5587), (111, 5614), (116, 5641), (119, 5656), (121, 5671), (146, 5773), (163, 5845), (173, 5878), (176, 5887), (181, 5923), (188, 5944), (190, 5950), (207, 6016), (212, 6031), (218, 6058), (232, 6109), (246, 6166), (254, 6205),

Gene: BigSherm_10 Start: 6551, Stop: 7462, Start Num: 43

Candidate Starts for BigSherm_10:

(28, 6503), (Start: 43 @6551 has 14 MA's), (157, 7103), (229, 7340), (244, 7406), (246, 7412),

Gene: Bjaner7_6 Start: 4854, Stop: 5777, Start Num: 42

Candidate Starts for Bjaner7_6:

(Start: 42 @4854 has 146 MA's), (63, 4938), (74, 4986), (96, 5130), (116, 5229), (118, 5241), (158, 5409), (181, 5493), (188, 5514), (194, 5526), (203, 5565), (214, 5601), (223, 5634), (244, 5721),

Gene: BlackJade_14 Start: 9378, Stop: 10262, Start Num: 39

Candidate Starts for BlackJade_14:

(Start: 39 @9378 has 48 MA's), (89, 9627), (111, 9729), (114, 9747), (198, 10044), (207, 10062), (230, 10146), (238, 10185), (244, 10206),

Gene: BlingBling_6 Start: 5209, Stop: 6138, Start Num: 44

Candidate Starts for BlingBling_6:

(Start: 44 @5209 has 53 MA's), (51, 5224), (56, 5248), (63, 5284), (68, 5308), (89, 5446), (107, 5524), (112, 5551), (130, 5644), (131, 5650), (166, 5782), (176, 5812), (179, 5836), (183, 5851), (198, 5899), (200, 5911), (255, 6130),

Gene: Blino_6 Start: 5044, Stop: 5973, Start Num: 42

Candidate Starts for Blino_6:

(Start: 42 @5044 has 146 MA's), (51, 5065), (60, 5107), (72, 5164), (81, 5212), (89, 5287), (96, 5317), (102, 5347), (107, 5365), (112, 5392), (113, 5404), (117, 5425), (129, 5476), (140, 5512), (162, 5605), (166, 5620), (176, 5650), (197, 5734), (210, 5785), (214, 5803), (244, 5920), (247, 5929),

Gene: BloominB_9 Start: 6586, Stop: 7542, Start Num: 42

Candidate Starts for BloominB_9:

(Start: 42 @6586 has 146 MA's), (59, 6646), (67, 6688), (68, 6691), (89, 6829), (100, 6871), (104, 6895), (107, 6907), (113, 6946), (114, 6949), (115, 6955), (125, 7003), (129, 7018), (141, 7063), (167, 7180), (172, 7195), (176, 7207), (178, 7225), (186, 7255), (197, 7297), (198, 7300), (200, 7312), (212, 7354), (222, 7396), (255, 7531),

Gene: Blueberry_6 Start: 5041, Stop: 5970, Start Num: 42

Candidate Starts for Blueberry_6:

(Start: 42 @5041 has 146 MA's), (51, 5062), (60, 5104), (72, 5161), (81, 5209), (89, 5284), (96, 5314), (102, 5344), (107, 5362), (112, 5389), (113, 5401), (117, 5422), (129, 5473), (140, 5509), (162, 5602),

(166, 5617), (176, 5647), (200, 5746), (210, 5782), (214, 5800), (244, 5917), (247, 5926),

Gene: Bock_10 Start: 6847, Stop: 7779, Start Num: 44

Candidate Starts for Bock_10:

(Start: 44 @6847 has 53 MA's), (51, 6862), (62, 6919), (63, 6922), (65, 6934), (89, 7084), (96, 7114), (104, 7150), (107, 7162), (113, 7201), (130, 7282), (176, 7450), (183, 7489), (197, 7534), (209, 7582), (245, 7723), (255, 7768),

Gene: Bogie_6 Start: 5282, Stop: 6226, Start Num: 42

Candidate Starts for Bogie_6:

(Start: 42 @5282 has 146 MA's), (55, 5327), (63, 5366), (89, 5528), (106, 5603), (111, 5630), (116, 5657), (119, 5672), (121, 5687), (142, 5762), (146, 5783), (163, 5855), (173, 5888), (176, 5897), (190, 5960), (212, 6041), (229, 6104), (232, 6119), (246, 6176), (247, 6179), (254, 6215),

Gene: Bogota_16 Start: 11786, Stop: 12754, Start Num: 45

Candidate Starts for Bogota_16:

(Start: 45 @11786 has 11 MA's), (Start: 48 @11792 has 1 MA's), (52, 11810), (67, 11885), (72, 11903), (73, 11906), (87, 11996), (88, 12002), (94, 12050), (100, 12068), (112, 12131), (113, 12143), (114, 12146), (121, 12185), (171, 12395), (175, 12407), (179, 12434), (180, 12443), (195, 12500), (201, 12524), (239, 12659), (242, 12668),

Gene: Bolt007_8 Start: 7115, Stop: 7996, Start Num: 39

Candidate Starts for Bolt007_8:

(Start: 39 @7115 has 48 MA's), (75, 7247), (81, 7280), (89, 7364), (90, 7367), (114, 7484), (136, 7574), (143, 7595), (157, 7664), (172, 7712), (199, 7787), (238, 7922), (251, 7976),

Gene: BossLady_9 Start: 7568, Stop: 8455, Start Num: 39

Candidate Starts for BossLady_9:

(Start: 39 @7568 has 48 MA's), (96, 7850), (104, 7886), (111, 7922), (132, 8015), (136, 8030), (152, 8084), (154, 8099), (167, 8153), (207, 8255), (220, 8303), (244, 8399),

Gene: Bowser_6 Start: 5198, Stop: 6115, Start Num: 43

Candidate Starts for Bowser_6:

(7, 4940), (Start: 43 @5198 has 14 MA's), (76, 5333), (81, 5366), (96, 5471), (147, 5696), (162, 5762), (163, 5765), (167, 5780), (171, 5792), (172, 5795), (181, 5834), (187, 5849), (188, 5855), (214, 5942), (223, 5975), (232, 6008), (236, 6029), (238, 6038), (244, 6059),

Gene: Bran_6 Start: 5123, Stop: 6055, Start Num: 47

Candidate Starts for Bran_6:

(30, 5087), (31, 5090), (Start: 47 @5123 has 8 MA's), (89, 5360), (94, 5384), (101, 5414), (104, 5426), (111, 5462), (112, 5465), (117, 5498), (160, 5669), (166, 5696), (177, 5741), (192, 5795), (204, 5843), (224, 5915), (233, 5951), (235, 5966), (240, 5987), (249, 6026), (254, 6044),

Gene: Brent_8 Start: 7215, Stop: 8108, Start Num: 37

Candidate Starts for Brent_8:

(Start: 37 @7215 has 7 MA's), (81, 7386), (89, 7470), (90, 7473), (96, 7500), (115, 7596), (132, 7665), (152, 7734), (157, 7770), (207, 7905), (220, 7953), (230, 7989), (238, 8028),

Gene: BronnyJr_6 Start: 5302, Stop: 6246, Start Num: 42

Candidate Starts for BronnyJr_6:

(Start: 42 @5302 has 146 MA's), (54, 5335), (63, 5386), (88, 5524), (89, 5548), (106, 5623), (111, 5650), (112, 5653), (116, 5677), (119, 5692), (121, 5707), (146, 5803), (157, 5857), (163, 5875), (173, 5908), (190, 5980), (212, 6061), (218, 6088), (229, 6124), (232, 6139), (244, 6190), (246, 6196), (254,

6235),

Gene: Brusacoram_6 Start: 5281, Stop: 6225, Start Num: 42

Candidate Starts for Brusacoram_6:

(Start: 42 @5281 has 146 MA's), (55, 5326), (63, 5365), (89, 5527), (106, 5602), (111, 5629), (112, 5632), (116, 5656), (119, 5671), (121, 5686), (142, 5761), (146, 5782), (163, 5854), (173, 5887), (176, 5896), (190, 5959), (212, 6040), (213, 6043), (218, 6067), (229, 6103), (232, 6118), (244, 6169), (246, 6175), (247, 6178), (254, 6214),

Gene: Brylie_10 Start: 6844, Stop: 7776, Start Num: 44

Candidate Starts for Brylie_10:

(Start: 44 @6844 has 53 MA's), (51, 6859), (62, 6916), (63, 6919), (65, 6931), (89, 7081), (96, 7111), (104, 7147), (107, 7159), (113, 7198), (130, 7279), (176, 7447), (183, 7486), (209, 7579), (245, 7720), (255, 7765),

Gene: Bubbykins_11 Start: 9257, Stop: 10156, Start Num: 37

Candidate Starts for Bubbykins_11:

(Start: 37 @9257 has 7 MA's), (54, 9296), (57, 9317), (81, 9431), (84, 9455), (99, 9557), (108, 9599), (123, 9683), (177, 9902), (242, 10100), (244, 10106), (250, 10136),

Gene: Bumble_8 Start: 7175, Stop: 8062, Start Num: 42

Candidate Starts for Bumble_8:

(Start: 42 @7175 has 146 MA's), (81, 7337), (82, 7340), (89, 7421), (90, 7424), (96, 7451), (111, 7523), (143, 7652), (164, 7742), (211, 7868), (238, 7979), (251, 8033),

Gene: Bunker_6 Start: 5200, Stop: 6117, Start Num: 43

Candidate Starts for Bunker_6:

(23, 5116), (Start: 43 @5200 has 14 MA's), (76, 5335), (96, 5473), (147, 5698), (162, 5764), (163, 5767), (167, 5782), (171, 5794), (172, 5797), (175, 5806), (181, 5836), (187, 5851), (188, 5857), (214, 5944), (232, 6010), (236, 6031), (238, 6040), (244, 6061),

Gene: Bunnies_6 Start: 5294, Stop: 6238, Start Num: 42

Candidate Starts for Bunnies_6:

(Start: 42 @5294 has 146 MA's), (55, 5339), (63, 5378), (89, 5540), (106, 5615), (111, 5642), (112, 5645), (116, 5669), (119, 5684), (121, 5699), (142, 5774), (146, 5795), (163, 5867), (173, 5900), (176, 5909), (190, 5972), (212, 6053), (213, 6056), (218, 6080), (229, 6116), (232, 6131), (244, 6182), (246, 6188), (247, 6191), (254, 6227),

Gene: CactusJack_6 Start: 5281, Stop: 6225, Start Num: 42

Candidate Starts for CactusJack_6:

(Start: 42 @5281 has 146 MA's), (55, 5326), (63, 5365), (89, 5527), (106, 5602), (111, 5629), (116, 5656), (119, 5671), (121, 5686), (142, 5761), (146, 5782), (163, 5854), (173, 5887), (176, 5896), (190, 5959), (212, 6040), (213, 6043), (218, 6067), (229, 6103), (232, 6118), (244, 6169), (246, 6175), (247, 6178), (254, 6214),

Gene: CalWood4100_8 Start: 7095, Stop: 7982, Start Num: 39

Candidate Starts for CalWood4100_8:

(Start: 39 @7095 has 48 MA's), (75, 7227), (81, 7260), (89, 7344), (98, 7380), (104, 7410), (114, 7464), (143, 7575), (172, 7692), (211, 7791), (230, 7863), (231, 7869), (238, 7902),

Gene: Camster_6 Start: 5294, Stop: 6238, Start Num: 42

Candidate Starts for Camster_6:

(Start: 42 @5294 has 146 MA's), (55, 5339), (63, 5378), (89, 5540), (106, 5615), (111, 5642), (116, 5669), (119, 5684), (121, 5699), (142, 5774), (146, 5795), (163, 5867), (173, 5900), (176, 5909), (190, 5972), (212, 6053), (213, 6056), (218, 6080), (229, 6116), (232, 6131), (244, 6182), (246, 6188), (247, 6191), (254, 6227),

Gene: CaptainKirk2_6 Start: 5209, Stop: 6138, Start Num: 44

Candidate Starts for CaptainKirk2_6:

(Start: 44 @5209 has 53 MA's), (51, 5224), (56, 5248), (63, 5284), (68, 5308), (86, 5413), (89, 5446), (107, 5524), (112, 5551), (130, 5644), (131, 5650), (166, 5782), (176, 5812), (179, 5836), (183, 5851), (198, 5899), (200, 5911), (255, 6130),

Gene: CarolAnn_6 Start: 5043, Stop: 5972, Start Num: 42

Candidate Starts for CarolAnn_6:

(Start: 42 @5043 has 146 MA's), (51, 5064), (60, 5106), (72, 5163), (81, 5211), (89, 5286), (96, 5316), (102, 5346), (107, 5364), (112, 5391), (113, 5403), (117, 5424), (129, 5475), (140, 5511), (162, 5604), (166, 5619), (176, 5649), (197, 5733), (210, 5784), (214, 5802), (244, 5919), (247, 5928),

Gene: CheeseSpider_6 Start: 5041, Stop: 5970, Start Num: 42

Candidate Starts for CheeseSpider_6:

(Start: 42 @5041 has 146 MA's), (51, 5062), (60, 5104), (72, 5161), (81, 5209), (89, 5284), (96, 5314), (102, 5344), (104, 5350), (107, 5362), (112, 5389), (113, 5401), (117, 5422), (129, 5473), (140, 5509), (162, 5602), (166, 5617), (176, 5647), (183, 5686), (197, 5731), (200, 5746), (210, 5782), (214, 5800), (244, 5917), (247, 5926),

Gene: Chipko_7 Start: 5583, Stop: 6503, Start Num: 42

Candidate Starts for Chipko_7:

(13, 5436), (Start: 42 @5583 has 146 MA's), (96, 5859), (138, 6048), (145, 6078), (149, 6090), (158, 6138), (163, 6153), (167, 6168), (187, 6237), (188, 6243), (203, 6294), (214, 6330), (232, 6396), (236, 6417), (238, 6426), (254, 6492),

Gene: Chipper1996_120 Start: 9682, Stop: 10578, Start Num: 39

Candidate Starts for Chipper1996_120:

(Start: 39 @9682 has 48 MA's), (81, 9853), (86, 9907), (90, 9943), (108, 10021), (123, 10105), (149, 10204), (177, 10324), (222, 10441), (226, 10456), (244, 10528),

Gene: Chocolat_12 Start: 9683, Stop: 10579, Start Num: 39

Candidate Starts for Chocolat_12:

(Start: 39 @9683 has 48 MA's), (81, 9854), (88, 9917), (108, 10022), (123, 10106), (149, 10205), (177, 10325), (222, 10442), (226, 10457), (244, 10529),

Gene: Chop_10 Start: 6877, Stop: 7809, Start Num: 44

Candidate Starts for Chop_10:

(Start: 44 @6877 has 53 MA's), (51, 6892), (62, 6949), (63, 6952), (65, 6964), (89, 7114), (104, 7180), (107, 7192), (113, 7231), (130, 7312), (176, 7480), (183, 7519), (197, 7564), (209, 7612), (245, 7753), (255, 7798),

Gene: Chubbello_6 Start: 5293, Stop: 6237, Start Num: 42

Candidate Starts for Chubbello_6:

(Start: 42 @5293 has 146 MA's), (55, 5338), (63, 5377), (89, 5539), (106, 5614), (111, 5641), (116, 5668), (119, 5683), (121, 5698), (142, 5773), (146, 5794), (163, 5866), (173, 5899), (176, 5908), (190, 5971), (212, 6052), (213, 6055), (218, 6079), (229, 6115), (232, 6130), (244, 6181), (246, 6187), (247, 6190), (254, 6226),

Gene: Chubster_12 Start: 9453, Stop: 10349, Start Num: 39

Candidate Starts for Chubster_12:

(Start: 39 @9453 has 48 MA's), (81, 9624), (88, 9687), (108, 9792), (123, 9876), (149, 9975), (177, 10095), (222, 10212), (226, 10227), (244, 10299),

Gene: Circuit_8 Start: 7164, Stop: 8048, Start Num: 41

Candidate Starts for Circuit_8:

(Start: 41 @7164 has 2 MA's), (83, 7338), (89, 7410), (90, 7413), (104, 7476), (111, 7512), (131, 7602), (143, 7641), (158, 7713), (167, 7743), (211, 7857), (238, 7968), (251, 8022),

Gene: Clap_6 Start: 4854, Stop: 5777, Start Num: 42

Candidate Starts for Clap_6:

(Start: 42 @4854 has 146 MA's), (63, 4938), (74, 4986), (96, 5130), (116, 5229), (118, 5241), (158, 5409), (181, 5493), (188, 5514), (194, 5526), (203, 5565), (214, 5601), (223, 5634), (244, 5721),

Gene: Clark_7 Start: 5345, Stop: 6268, Start Num: 42

Candidate Starts for Clark_7:

(Start: 42 @5345 has 146 MA's), (63, 5429), (74, 5477), (118, 5732), (121, 5750), (157, 5897), (158, 5900), (162, 5912), (181, 5984), (194, 6017), (214, 6092), (223, 6125), (238, 6191), (242, 6206), (244, 6212), (254, 6257),

Gene: Cole_8 Start: 6211, Stop: 7122, Start Num: 43

Candidate Starts for Cole_8:

(28, 6163), (Start: 43 @6211 has 14 MA's), (157, 6763), (167, 6796), (229, 7000), (244, 7066), (246, 7072),

Gene: Colleen_9 Start: 7329, Stop: 8234, Start Num: 35

Candidate Starts for Colleen_9:

(Start: 35 @7329 has 5 MA's), (59, 7398), (71, 7455), (83, 7515), (85, 7533), (86, 7551), (109, 7680), (112, 7689), (117, 7722), (128, 7770), (166, 7914), (172, 7932), (192, 7989), (223, 8094), (229, 8112), (243, 8175),

Gene: Colucci_11 Start: 9183, Stop: 10079, Start Num: 38

Candidate Starts for Colucci_11:

(Start: 38 @9183 has 1 MA's), (Start: 47 @9195 has 8 MA's), (65, 9282), (81, 9354), (90, 9444), (112, 9546), (123, 9606), (132, 9642), (176, 9810), (177, 9825), (222, 9942), (226, 9957), (244, 10029),

Gene: Conboy_12 Start: 9681, Stop: 10577, Start Num: 39

Candidate Starts for Conboy_12:

(Start: 39 @9681 has 48 MA's), (81, 9852), (86, 9906), (90, 9942), (108, 10020), (123, 10104), (149, 10203), (177, 10323), (222, 10440), (226, 10455), (244, 10527),

Gene: Coriander_7 Start: 5582, Stop: 6502, Start Num: 42

Candidate Starts for Coriander_7:

(13, 5435), (Start: 42 @5582 has 146 MA's), (96, 5858), (138, 6047), (144, 6068), (145, 6077), (149, 6089), (158, 6137), (163, 6152), (167, 6167), (187, 6236), (188, 6242), (203, 6293), (207, 6302), (214, 6329), (223, 6362), (232, 6395), (236, 6416), (238, 6425), (254, 6491),

Gene: Crosby_16 Start: 11773, Stop: 12753, Start Num: 45

Candidate Starts for Crosby_16:

(Start: 45 @11773 has 11 MA's), (Start: 48 @11779 has 1 MA's), (52, 11797), (67, 11872), (72, 11890), (73, 11893), (87, 11983), (88, 11989), (94, 12037), (100, 12055), (112, 12118), (113, 12130), (114, 12133), (121, 12172), (170, 12388), (171, 12391), (179, 12430), (214, 12571), (239, 12655), (242,

12664), (251, 12703),

Gene: Cynthia_6 Start: 4854, Stop: 5777, Start Num: 42

Candidate Starts for Cynthia_6:

(Start: 42 @4854 has 146 MA's), (63, 4938), (74, 4986), (96, 5130), (116, 5229), (118, 5241), (158, 5409), (181, 5493), (188, 5514), (194, 5526), (203, 5565), (214, 5601), (223, 5634), (244, 5721),

Gene: Daegal_10 Start: 6877, Stop: 7833, Start Num: 42

Candidate Starts for Daegal_10:

(Start: 42 @6877 has 146 MA's), (59, 6937), (67, 6979), (68, 6982), (89, 7120), (100, 7162), (104, 7186), (107, 7198), (113, 7237), (114, 7240), (115, 7246), (125, 7294), (129, 7309), (141, 7354), (167, 7471), (172, 7486), (176, 7498), (178, 7516), (186, 7546), (197, 7588), (198, 7591), (200, 7603), (212, 7645), (222, 7687), (255, 7822),

Gene: DeepSoil15_9 Start: 6586, Stop: 7542, Start Num: 42

Candidate Starts for DeepSoil15_9:

(Start: 42 @6586 has 146 MA's), (59, 6646), (67, 6688), (68, 6691), (89, 6829), (100, 6871), (104, 6895), (107, 6907), (113, 6946), (114, 6949), (115, 6955), (125, 7003), (129, 7018), (141, 7063), (167, 7180), (172, 7195), (176, 7207), (178, 7225), (186, 7255), (197, 7297), (198, 7300), (200, 7312), (212, 7354), (222, 7396), (255, 7531),

Gene: DelRio_10 Start: 7141, Stop: 8073, Start Num: 44

Candidate Starts for DelRio_10:

(Start: 44 @7141 has 53 MA's), (51, 7156), (62, 7213), (63, 7216), (65, 7228), (80, 7300), (89, 7378), (104, 7444), (107, 7456), (113, 7495), (130, 7576), (176, 7744), (183, 7783), (198, 7831), (209, 7876), (245, 8017), (255, 8062),

Gene: Delian_6 Start: 5209, Stop: 6138, Start Num: 44

Candidate Starts for Delian_6:

(Start: 44 @5209 has 53 MA's), (51, 5224), (56, 5248), (63, 5284), (68, 5308), (86, 5413), (89, 5446), (107, 5524), (112, 5551), (130, 5644), (131, 5650), (166, 5782), (176, 5812), (179, 5836), (183, 5851), (198, 5899), (200, 5911), (255, 6130),

Gene: Denise_6 Start: 4863, Stop: 5786, Start Num: 42

Candidate Starts for Denise_6:

(Start: 42 @4863 has 146 MA's), (63, 4947), (74, 4995), (96, 5139), (116, 5238), (118, 5250), (158, 5418), (181, 5502), (188, 5523), (194, 5535), (203, 5574), (214, 5610), (223, 5643), (244, 5730),

Gene: Dewey_9 Start: 6586, Stop: 7542, Start Num: 42

Candidate Starts for Dewey_9:

(Start: 42 @6586 has 146 MA's), (59, 6646), (67, 6688), (68, 6691), (89, 6829), (100, 6871), (104, 6895), (107, 6907), (113, 6946), (114, 6949), (115, 6955), (125, 7003), (129, 7018), (141, 7063), (167, 7180), (172, 7195), (176, 7207), (178, 7225), (186, 7255), (197, 7297), (198, 7300), (200, 7312), (212, 7354), (222, 7396), (255, 7531),

Gene: Dina_6 Start: 5118, Stop: 6050, Start Num: 47

Candidate Starts for Dina_6:

(31, 5085), (Start: 47 @5118 has 8 MA's), (89, 5355), (94, 5379), (101, 5409), (104, 5421), (111, 5457), (112, 5460), (117, 5493), (160, 5664), (166, 5691), (177, 5736), (192, 5790), (204, 5838), (224, 5910), (233, 5946), (234, 5958), (235, 5961), (240, 5982), (249, 6021), (254, 6039),

Gene: Dirdigger_9 Start: 6469, Stop: 7398, Start Num: 40

Candidate Starts for Dirdigger_9:

(Start: 40 @6469 has 13 MA's), (88, 6691), (104, 6781), (112, 6820), (116, 6844), (167, 7066), (208, 7198), (214, 7222), (227, 7270), (242, 7336),

Gene: DirtyBoi_7 Start: 5561, Stop: 6481, Start Num: 42

Candidate Starts for DirtyBoi_7:

(Start: 42 @5561 has 146 MA's), (63, 5645), (81, 5732), (109, 5903), (121, 5966), (158, 6116), (167, 6146), (191, 6224), (207, 6281), (214, 6308), (226, 6350), (242, 6419), (244, 6425),

Gene: Divya_8 Start: 6709, Stop: 7593, Start Num: 39

Candidate Starts for Divya_8:

(Start: 39 @6709 has 48 MA's), (86, 6925), (114, 7078), (132, 7153), (134, 7162), (207, 7393), (220, 7441), (224, 7456), (236, 7507), (237, 7513), (244, 7537),

Gene: Dmitri_7 Start: 5561, Stop: 6481, Start Num: 42

Candidate Starts for Dmitri_7:

(Start: 42 @5561 has 146 MA's), (63, 5645), (81, 5732), (109, 5903), (121, 5966), (145, 6056), (158, 6116), (167, 6146), (191, 6224), (206, 6278), (207, 6281), (214, 6308), (226, 6350), (242, 6419), (244, 6425),

Gene: DobbysSock_6 Start: 4843, Stop: 5766, Start Num: 42

Candidate Starts for DobbysSock_6:

(Start: 42 @4843 has 146 MA's), (63, 4927), (74, 4975), (118, 5230), (121, 5248), (157, 5395), (158, 5398), (162, 5410), (181, 5482), (194, 5515), (214, 5590), (223, 5623), (238, 5689), (244, 5710), (254, 5755),

Gene: Doggs_6 Start: 5279, Stop: 6199, Start Num: 42

Candidate Starts for Doggs_6:

(13, 5132), (Start: 42 @5279 has 146 MA's), (96, 5555), (138, 5744), (144, 5765), (145, 5774), (149, 5786), (158, 5834), (163, 5849), (167, 5864), (187, 5933), (188, 5939), (203, 5990), (207, 5999), (214, 6026), (223, 6059), (232, 6092), (236, 6113), (238, 6122), (254, 6188),

Gene: Dolores_7 Start: 5345, Stop: 6268, Start Num: 42

Candidate Starts for Dolores_7:

(Start: 42 @5345 has 146 MA's), (63, 5429), (74, 5477), (118, 5732), (121, 5750), (157, 5897), (158, 5900), (162, 5912), (181, 5984), (194, 6017), (214, 6092), (223, 6125), (238, 6191), (244, 6212), (254, 6257),

Gene: Donatella_9 Start: 6733, Stop: 7662, Start Num: 40

Candidate Starts for Donatella_9:

(Start: 40 @6733 has 13 MA's), (88, 6955), (112, 7084), (116, 7108), (175, 7354), (208, 7462), (214, 7486), (242, 7600),

Gene: Donovan_6 Start: 5299, Stop: 6243, Start Num: 42

Candidate Starts for Donovan_6:

(Start: 42 @5299 has 146 MA's), (54, 5332), (63, 5383), (89, 5545), (106, 5620), (111, 5647), (116, 5674), (119, 5689), (121, 5704), (146, 5800), (157, 5854), (163, 5872), (173, 5905), (190, 5977), (212, 6058), (218, 6085), (229, 6121), (232, 6136), (244, 6187), (246, 6193), (254, 6232),

Gene: Dorito_6 Start: 4843, Stop: 5766, Start Num: 42

Candidate Starts for Dorito_6:

(Start: 42 @4843 has 146 MA's), (63, 4927), (74, 4975), (118, 5230), (121, 5248), (157, 5395), (158, 5398), (162, 5410), (181, 5482), (194, 5515), (214, 5590), (223, 5623), (238, 5689), (242, 5704), (244, 5710), (254, 5755),

Gene: DrYang_12 Start: 9617, Stop: 10513, Start Num: 39

Candidate Starts for DrYang_12:

(Start: 39 @9617 has 48 MA's), (81, 9788), (86, 9842), (88, 9851), (90, 9878), (108, 9956), (123, 10040), (132, 10076), (146, 10130), (151, 10145), (176, 10244), (178, 10262), (244, 10463),

Gene: DumpsterDude_6 Start: 5417, Stop: 6349, Start Num: 44

Candidate Starts for DumpsterDude_6:

(24, 5339), (Start: 44 @5417 has 53 MA's), (51, 5432), (65, 5504), (89, 5654), (104, 5720), (107, 5732), (108, 5735), (113, 5771), (130, 5852), (150, 5924), (176, 6020), (198, 6107), (245, 6293),

Gene: Dynamo_6 Start: 5294, Stop: 6238, Start Num: 42

Candidate Starts for Dynamo_6:

(Start: 42 @5294 has 146 MA's), (55, 5339), (63, 5378), (89, 5540), (106, 5615), (111, 5642), (116, 5669), (119, 5684), (121, 5699), (142, 5774), (146, 5795), (163, 5867), (173, 5900), (176, 5909), (190, 5972), (212, 6053), (213, 6056), (218, 6080), (229, 6116), (232, 6131), (244, 6182), (246, 6188), (247, 6191), (254, 6227),

Gene: Easley_7 Start: 5345, Stop: 6268, Start Num: 42

Candidate Starts for Easley_7:

(Start: 42 @5345 has 146 MA's), (63, 5429), (74, 5477), (118, 5732), (121, 5750), (157, 5897), (162, 5912), (181, 5984), (194, 6017), (214, 6092), (223, 6125), (238, 6191), (244, 6212), (254, 6257),

Gene: EastWest_10 Start: 7632, Stop: 8534, Start Num: 36

Candidate Starts for EastWest_10:

(Start: 36 @7632 has 1 MA's), (62, 7722), (115, 8016), (128, 8076), (145, 8136), (157, 8193), (169, 8232), (207, 8328), (220, 8376), (244, 8472),

Gene: Ebert_6 Start: 4854, Stop: 5777, Start Num: 42

Candidate Starts for Ebert_6:

(Start: 42 @4854 has 146 MA's), (63, 4938), (74, 4986), (96, 5130), (116, 5229), (118, 5241), (158, 5409), (181, 5493), (188, 5514), (194, 5526), (203, 5565), (214, 5601), (223, 5634), (244, 5721),

Gene: EdgarPoe_12 Start: 9681, Stop: 10577, Start Num: 39

Candidate Starts for EdgarPoe_12:

(Start: 39 @9681 has 48 MA's), (81, 9852), (86, 9906), (90, 9942), (108, 10020), (123, 10104), (149, 10203), (177, 10323), (222, 10440), (226, 10455), (244, 10527),

Gene: EdnaMode_6 Start: 4854, Stop: 5777, Start Num: 42

Candidate Starts for EdnaMode_6:

(Start: 42 @4854 has 146 MA's), (63, 4938), (74, 4986), (96, 5130), (116, 5229), (118, 5241), (158, 5409), (181, 5493), (188, 5514), (194, 5526), (203, 5565), (214, 5601), (223, 5634),

Gene: Ein37_9 Start: 6586, Stop: 7542, Start Num: 42

Candidate Starts for Ein37_9:

(Start: 42 @6586 has 146 MA's), (59, 6646), (67, 6688), (68, 6691), (89, 6829), (100, 6871), (104, 6895), (107, 6907), (113, 6946), (114, 6949), (115, 6955), (125, 7003), (129, 7018), (141, 7063), (167, 7180), (172, 7195), (176, 7207), (178, 7225), (186, 7255), (197, 7297), (198, 7300), (200, 7312), (212, 7354), (222, 7396), (255, 7531),

Gene: Elesar_9 Start: 6600, Stop: 7511, Start Num: 43

Candidate Starts for Elesar_9:

(19, 6474), (28, 6552), (Start: 43 @6600 has 14 MA's), (105, 6918), (157, 7152), (167, 7185), (229, 7389), (244, 7455), (246, 7461),

Gene: Etoile_6 Start: 5294, Stop: 6238, Start Num: 42

Candidate Starts for Etoile_6:

(Start: 42 @5294 has 146 MA's), (55, 5339), (63, 5378), (89, 5540), (106, 5615), (111, 5642), (116, 5669), (119, 5684), (121, 5699), (142, 5774), (146, 5795), (163, 5867), (173, 5900), (176, 5909), (190, 5972), (212, 6053), (213, 6056), (218, 6080), (229, 6116), (232, 6131), (244, 6182), (246, 6188), (247, 6191), (254, 6227),

Gene: Evanesce_9 Start: 6586, Stop: 7542, Start Num: 42

Candidate Starts for Evanesce_9:

(Start: 42 @6586 has 146 MA's), (59, 6646), (67, 6688), (68, 6691), (89, 6829), (100, 6871), (104, 6895), (107, 6907), (113, 6946), (114, 6949), (115, 6955), (125, 7003), (129, 7018), (141, 7063), (167, 7180), (172, 7195), (176, 7207), (178, 7225), (186, 7255), (197, 7297), (198, 7300), (200, 7312), (212, 7354), (222, 7396), (255, 7531),

Gene: Eyes_6 Start: 5207, Stop: 6124, Start Num: 43

Candidate Starts for Eyes_6:

(7, 4949), (Start: 43 @5207 has 14 MA's), (76, 5342), (81, 5375), (96, 5480), (147, 5705), (163, 5774), (167, 5789), (171, 5801), (172, 5804), (181, 5843), (187, 5858), (188, 5864), (214, 5951), (223, 5984), (232, 6017), (236, 6038), (238, 6047), (244, 6068),

Gene: Fairfaxidum_6 Start: 5209, Stop: 6138, Start Num: 44

Candidate Starts for Fairfaxidum_6:

(Start: 44 @5209 has 53 MA's), (51, 5224), (63, 5284), (65, 5296), (86, 5413), (101, 5500), (107, 5524), (129, 5635), (131, 5650), (166, 5782), (176, 5812), (198, 5899), (200, 5911), (255, 6130),

Gene: Fenry_6 Start: 5212, Stop: 6141, Start Num: 44

Candidate Starts for Fenry_6:

(Start: 44 @5212 has 53 MA's), (51, 5227), (56, 5251), (63, 5287), (68, 5311), (86, 5416), (89, 5449), (107, 5527), (112, 5554), (130, 5647), (131, 5653), (166, 5785), (176, 5815), (179, 5839), (183, 5854), (198, 5902), (200, 5914), (255, 6133),

Gene: Finkle_6 Start: 4987, Stop: 5913, Start Num: 42

Candidate Starts for Finkle_6:

(Start: 42 @4987 has 146 MA's), (76, 5125), (100, 5275), (115, 5359), (117, 5371), (146, 5485), (156, 5536), (165, 5566), (214, 5737), (232, 5806), (254, 5902),

Gene: FirstPlacePfu_6 Start: 5294, Stop: 6238, Start Num: 42

Candidate Starts for FirstPlacePfu_6:

(Start: 42 @5294 has 146 MA's), (55, 5339), (63, 5378), (89, 5540), (106, 5615), (111, 5642), (116, 5669), (119, 5684), (121, 5699), (142, 5774), (146, 5795), (163, 5867), (173, 5900), (176, 5909), (190, 5972), (212, 6053), (213, 6056), (218, 6080), (229, 6116), (232, 6131), (244, 6182), (246, 6188), (247, 6191), (254, 6227),

Gene: Fishburne_6 Start: 5294, Stop: 6238, Start Num: 42

Candidate Starts for Fishburne_6:

(Start: 42 @5294 has 146 MA's), (55, 5339), (63, 5378), (89, 5540), (106, 5615), (111, 5642), (116, 5669), (119, 5684), (121, 5699), (142, 5774), (146, 5795), (163, 5867), (173, 5900), (176, 5909), (190, 5972), (212, 6053), (213, 6056), (218, 6080), (229, 6116), (232, 6131), (244, 6182), (246, 6188), (247, 6191), (254, 6227),

Gene: Forge_9 Start: 6586, Stop: 7542, Start Num: 42

Candidate Starts for Forge_9:

(Start: 42 @6586 has 146 MA's), (59, 6646), (67, 6688), (68, 6691), (89, 6829), (100, 6871), (104, 6895), (107, 6907), (113, 6946), (114, 6949), (115, 6955), (125, 7003), (129, 7018), (141, 7063), (167, 7180), (172, 7195), (176, 7207), (178, 7225), (186, 7255), (197, 7297), (198, 7300), (200, 7312), (212, 7354), (222, 7396), (255, 7531),

Gene: Francois_10 Start: 6846, Stop: 7778, Start Num: 44

Candidate Starts for Francois_10:

(Start: 44 @6846 has 53 MA's), (51, 6861), (62, 6918), (63, 6921), (65, 6933), (88, 7059), (89, 7083), (96, 7113), (104, 7149), (107, 7161), (113, 7200), (130, 7281), (176, 7449), (183, 7488), (198, 7536), (209, 7581), (245, 7722), (255, 7767),

Gene: Franzy_8 Start: 7215, Stop: 8108, Start Num: 37

Candidate Starts for Franzy_8:

(Start: 37 @7215 has 7 MA's), (81, 7386), (89, 7470), (90, 7473), (96, 7500), (115, 7596), (132, 7665), (152, 7734), (157, 7770), (207, 7905), (220, 7953), (230, 7989), (238, 8028),

Gene: FroggyToad_6 Start: 4855, Stop: 5778, Start Num: 42

Candidate Starts for FroggyToad_6:

(Start: 42 @4855 has 146 MA's), (63, 4939), (74, 4987), (96, 5131), (116, 5230), (118, 5242), (158, 5410), (181, 5494), (188, 5515), (194, 5527), (214, 5602), (223, 5635), (244, 5722),

Gene: Frokostdame_6 Start: 5112, Stop: 6041, Start Num: 42

Candidate Starts for Frokostdame_6:

(Start: 42 @5112 has 146 MA's), (51, 5133), (60, 5175), (72, 5232), (81, 5280), (89, 5355), (93, 5376), (96, 5385), (102, 5415), (107, 5433), (112, 5460), (113, 5472), (117, 5493), (129, 5544), (140, 5580), (162, 5673), (166, 5688), (176, 5718), (197, 5802), (200, 5817), (210, 5853), (214, 5871), (244, 5988), (247, 5997),

Gene: GEazy_6 Start: 5209, Stop: 6126, Start Num: 43

Candidate Starts for GEazy_6:

(4, 4852), (11, 5053), (23, 5125), (25, 5128), (Start: 43 @5209 has 14 MA's), (76, 5344), (81, 5377), (96, 5482), (147, 5707), (162, 5773), (163, 5776), (167, 5791), (171, 5803), (172, 5806), (175, 5815), (181, 5845), (187, 5860), (188, 5866), (214, 5953), (232, 6019), (236, 6040), (238, 6049), (244, 6070),

Gene: GMA4_7 Start: 6326, Stop: 7234, Start Num: 34

Candidate Starts for GMA4_7:

(Start: 34 @6326 has 1 MA's), (59, 6395), (128, 6776), (138, 6806), (168, 6926), (184, 6980), (205, 7028), (211, 7046), (247, 7187),

Gene: Gallop_7 Start: 4894, Stop: 5817, Start Num: 48

Candidate Starts for Gallop_7:

(32, 4861), (Start: 48 @4894 has 1 MA's), (59, 4945), (80, 5047), (89, 5125), (91, 5134), (107, 5203), (109, 5221), (113, 5242), (115, 5251), (117, 5263), (118, 5266), (129, 5314), (130, 5323), (133, 5335), (144, 5374), (148, 5392), (160, 5434), (167, 5461), (177, 5503), (197, 5572), (247, 5770), (252, 5797), (253, 5800), (254, 5806),

Gene: GaloreK_6 Start: 5300, Stop: 6244, Start Num: 42

Candidate Starts for GaloreK_6:

(Start: 42 @5300 has 146 MA's), (54, 5333), (63, 5384), (89, 5546), (106, 5621), (111, 5648), (112, 5651), (116, 5675), (119, 5690), (121, 5705), (146, 5801), (157, 5855), (163, 5873), (173, 5906), (190, 5978), (212, 6059), (218, 6086), (229, 6122), (232, 6137), (244, 6188), (246, 6194), (254, 6233),

Gene: Gambino_6 Start: 5041, Stop: 5970, Start Num: 42

Candidate Starts for Gambino_6:

(Start: 42 @5041 has 146 MA's), (51, 5062), (60, 5104), (72, 5161), (81, 5209), (89, 5284), (96, 5314), (102, 5344), (107, 5362), (112, 5389), (113, 5401), (117, 5422), (129, 5473), (140, 5509), (162, 5602), (166, 5617), (176, 5647), (200, 5746), (210, 5782), (214, 5800), (244, 5917), (247, 5926),

Gene: Gancho_8 Start: 6286, Stop: 7242, Start Num: 42

Candidate Starts for Gancho_8:

(Start: 42 @6286 has 146 MA's), (59, 6346), (67, 6388), (68, 6391), (89, 6529), (100, 6571), (104, 6595), (107, 6607), (113, 6646), (114, 6649), (115, 6655), (125, 6703), (129, 6718), (141, 6763), (167, 6880), (172, 6895), (176, 6907), (178, 6925), (197, 6997), (198, 7000), (200, 7012), (212, 7054), (222, 7096), (255, 7231),

Gene: Gavriela_6 Start: 5281, Stop: 6225, Start Num: 42

Candidate Starts for Gavriela_6:

(Start: 42 @5281 has 146 MA's), (55, 5326), (63, 5365), (89, 5527), (106, 5602), (111, 5629), (116, 5656), (119, 5671), (121, 5686), (142, 5761), (146, 5782), (163, 5854), (173, 5887), (176, 5896), (190, 5959), (212, 6040), (213, 6043), (218, 6067), (229, 6103), (232, 6118), (244, 6169), (246, 6175), (247, 6178), (254, 6214),

Gene: GemG_6 Start: 4854, Stop: 5777, Start Num: 42

Candidate Starts for GemG_6:

(Start: 42 @4854 has 146 MA's), (63, 4938), (74, 4986), (96, 5130), (116, 5229), (118, 5241), (158, 5409), (181, 5493), (188, 5514), (194, 5526), (203, 5565), (214, 5601), (223, 5634), (244, 5721),

Gene: Giles_9 Start: 6586, Stop: 7542, Start Num: 42

Candidate Starts for Giles_9:

(Start: 42 @6586 has 146 MA's), (59, 6646), (67, 6688), (68, 6691), (89, 6829), (100, 6871), (104, 6895), (107, 6907), (113, 6946), (114, 6949), (115, 6955), (125, 7003), (129, 7018), (141, 7063), (167, 7180), (172, 7195), (176, 7207), (178, 7225), (186, 7255), (197, 7297), (198, 7300), (200, 7312), (212, 7354), (222, 7396), (255, 7531),

Gene: Gizermo_6 Start: 4854, Stop: 5777, Start Num: 42

Candidate Starts for Gizermo_6:

(Start: 42 @4854 has 146 MA's), (63, 4938), (74, 4986), (96, 5130), (116, 5229), (118, 5241), (158, 5409), (181, 5493), (188, 5514), (194, 5526), (203, 5565), (214, 5601), (223, 5634), (244, 5721),

Gene: Glaske_6 Start: 5281, Stop: 6225, Start Num: 42

Candidate Starts for Glaske_6:

(Start: 42 @5281 has 146 MA's), (55, 5326), (63, 5365), (89, 5527), (106, 5602), (111, 5629), (116, 5656), (119, 5671), (121, 5686), (142, 5761), (146, 5782), (163, 5854), (173, 5887), (176, 5896), (190, 5959), (212, 6040), (213, 6043), (218, 6067), (229, 6103), (232, 6118), (244, 6169), (246, 6175), (247, 6178), (254, 6214),

Gene: GoldDust_10 Start: 9295, Stop: 10176, Start Num: 39

Candidate Starts for GoldDust_10:

(Start: 39 @9295 has 48 MA's), (86, 9508), (89, 9541), (104, 9607), (111, 9643), (132, 9736), (207, 9976), (222, 10033), (231, 10066), (244, 10120),

Gene: Gooberta_10 Start: 9295, Stop: 10176, Start Num: 39

Candidate Starts for Gooberta_10:

(Start: 39 @9295 has 48 MA's), (86, 9508), (89, 9541), (104, 9607), (111, 9643), (132, 9736), (207, 9976), (222, 10033), (231, 10066), (244, 10120),

Gene: GoodLuckBabe_10 Start: 6561, Stop: 7490, Start Num: 40

Candidate Starts for GoodLuckBabe_10:

(Start: 40 @6561 has 13 MA's), (88, 6783), (112, 6912), (116, 6936), (175, 7182), (182, 7212), (208, 7290), (214, 7314), (242, 7428),

Gene: GrandSlam_10 Start: 6877, Stop: 7809, Start Num: 44

Candidate Starts for GrandSlam_10:

(Start: 44 @6877 has 53 MA's), (51, 6892), (62, 6949), (63, 6952), (65, 6964), (89, 7114), (104, 7180), (107, 7192), (113, 7231), (130, 7312), (176, 7480), (183, 7519), (197, 7564), (209, 7612), (245, 7753), (255, 7798),

Gene: Gravaillia_9 Start: 6319, Stop: 7275, Start Num: 42

Candidate Starts for Gravaillia_9:

(Start: 42 @6319 has 146 MA's), (59, 6379), (67, 6421), (68, 6424), (89, 6562), (100, 6604), (104, 6628), (107, 6640), (113, 6679), (114, 6682), (115, 6688), (125, 6736), (129, 6751), (141, 6796), (167, 6913), (172, 6928), (176, 6940), (178, 6958), (197, 7030), (198, 7033), (200, 7045), (212, 7087), (222, 7129), (255, 7264),

Gene: GravityBall_9 Start: 7550, Stop: 8437, Start Num: 39

Candidate Starts for GravityBall_9:

(Start: 39 @7550 has 48 MA's), (81, 7718), (96, 7832), (104, 7868), (115, 7928), (132, 7997), (157, 8102), (168, 8138), (198, 8219), (207, 8237), (220, 8285), (238, 8360), (244, 8381),

Gene: GreaseLightnin_6 Start: 5294, Stop: 6238, Start Num: 42

Candidate Starts for GreaseLightnin_6:

(Start: 42 @5294 has 146 MA's), (55, 5339), (63, 5378), (89, 5540), (106, 5615), (111, 5642), (116, 5669), (119, 5684), (121, 5699), (142, 5774), (146, 5795), (163, 5867), (173, 5900), (176, 5909), (190, 5972), (212, 6053), (213, 6056), (218, 6080), (229, 6116), (232, 6131), (244, 6182), (246, 6188), (247, 6191), (254, 6227),

Gene: Grekaycon_9 Start: 7577, Stop: 8464, Start Num: 39

Candidate Starts for Grekaycon_9:

(Start: 39 @7577 has 48 MA's), (96, 7859), (104, 7895), (111, 7931), (132, 8024), (136, 8039), (152, 8093), (154, 8108), (167, 8162), (207, 8264), (220, 8312), (244, 8408),

Gene: Guacamole_6 Start: 5213, Stop: 6142, Start Num: 44

Candidate Starts for Guacamole_6:

(Start: 44 @5213 has 53 MA's), (51, 5228), (56, 5252), (63, 5288), (68, 5312), (86, 5417), (89, 5450), (107, 5528), (112, 5555), (130, 5648), (131, 5654), (166, 5786), (176, 5816), (179, 5840), (183, 5855), (198, 5903), (200, 5915), (255, 6134),

Gene: Guinevere_10 Start: 6592, Stop: 7521, Start Num: 40

Candidate Starts for Guinevere_10:

(Start: 40 @6592 has 13 MA's), (56, 6640), (88, 6814), (112, 6943), (116, 6967), (175, 7213), (208, 7321), (214, 7345), (227, 7393), (242, 7459),

Gene: Gusanita_8 Start: 6480, Stop: 7409, Start Num: 40

Candidate Starts for Gusanita_8:

(Start: 40 @6480 has 13 MA's), (88, 6702), (104, 6792), (112, 6831), (116, 6855), (167, 7077), (208, 7209), (214, 7233), (242, 7347),

Gene: HH92_9 Start: 6586, Stop: 7542, Start Num: 42

Candidate Starts for HH92_9:

(Start: 42 @6586 has 146 MA's), (59, 6646), (67, 6688), (68, 6691), (89, 6829), (100, 6871), (104, 6895), (107, 6907), (113, 6946), (114, 6949), (115, 6955), (125, 7003), (129, 7018), (141, 7063), (167, 7180), (172, 7195), (176, 7207), (178, 7225), (186, 7255), (197, 7297), (198, 7300), (200, 7312), (212, 7354), (222, 7396), (255, 7531),

Gene: HUHilltop_6 Start: 5294, Stop: 6238, Start Num: 42

Candidate Starts for HUHilltop_6:

(Start: 42 @5294 has 146 MA's), (55, 5339), (63, 5378), (89, 5540), (106, 5615), (111, 5642), (116, 5669), (119, 5684), (121, 5699), (142, 5774), (146, 5795), (163, 5867), (173, 5900), (176, 5909), (190, 5972), (212, 6053), (213, 6056), (218, 6080), (229, 6116), (232, 6131), (244, 6182), (246, 6188), (247, 6191), (254, 6227),

Gene: Hadrien_9 Start: 6586, Stop: 7542, Start Num: 42

Candidate Starts for Hadrien_9:

(Start: 42 @6586 has 146 MA's), (59, 6646), (67, 6688), (68, 6691), (89, 6829), (100, 6871), (104, 6895), (107, 6907), (113, 6946), (114, 6949), (115, 6955), (125, 7003), (129, 7018), (141, 7063), (167, 7180), (172, 7195), (176, 7207), (178, 7225), (186, 7255), (197, 7297), (198, 7300), (200, 7312), (212, 7354), (222, 7396), (255, 7531),

Gene: Hail_9 Start: 6586, Stop: 7542, Start Num: 42

Candidate Starts for Hail_9:

(Start: 42 @6586 has 146 MA's), (59, 6646), (67, 6688), (68, 6691), (89, 6829), (100, 6871), (104, 6895), (107, 6907), (113, 6946), (114, 6949), (115, 6955), (125, 7003), (129, 7018), (141, 7063), (167, 7180), (172, 7195), (176, 7207), (178, 7225), (186, 7255), (197, 7297), (198, 7300), (200, 7312), (212, 7354), (222, 7396), (255, 7531),

Gene: Haley23_6 Start: 4854, Stop: 5777, Start Num: 42

Candidate Starts for Haley23_6:

(Start: 42 @4854 has 146 MA's), (63, 4938), (74, 4986), (96, 5130), (116, 5229), (118, 5241), (158, 5409), (181, 5493), (188, 5514), (194, 5526), (203, 5565), (214, 5601), (223, 5634), (244, 5721),

Gene: Halloweekend_8 Start: 6230, Stop: 7159, Start Num: 40

Candidate Starts for Halloweekend_8:

(Start: 40 @6230 has 13 MA's), (88, 6452), (112, 6581), (116, 6605), (175, 6851), (208, 6959), (214, 6983), (227, 7031), (242, 7097),

Gene: Hamood_10 Start: 6877, Stop: 7809, Start Num: 44

Candidate Starts for Hamood_10:

(Start: 44 @6877 has 53 MA's), (51, 6892), (62, 6949), (63, 6952), (65, 6964), (89, 7114), (104, 7180), (107, 7192), (113, 7231), (130, 7312), (176, 7480), (183, 7519), (197, 7564), (209, 7612), (245, 7753), (255, 7798),

Gene: HannahD_6 Start: 5209, Stop: 6126, Start Num: 43

Candidate Starts for HannahD_6:

(4, 4852), (11, 5053), (23, 5125), (25, 5128), (Start: 43 @5209 has 14 MA's), (76, 5344), (81, 5377), (96, 5482), (147, 5707), (162, 5773), (163, 5776), (167, 5791), (171, 5803), (172, 5806), (175, 5815), (181, 5845), (187, 5860), (188, 5866), (214, 5953), (232, 6019), (236, 6040), (238, 6049), (244, 6070),

Gene: Hedwig_7 Start: 5561, Stop: 6481, Start Num: 42

Candidate Starts for Hedwig_7:

(Start: 42 @5561 has 146 MA's), (63, 5645), (109, 5903), (121, 5966), (158, 6116), (167, 6146), (191, 6224), (207, 6281), (214, 6308), (226, 6350), (242, 6419), (244, 6425),

Gene: Henococcus_16 Start: 11667, Stop: 12635, Start Num: 45

Candidate Starts for Henococcus_16:

(Start: 45 @11667 has 11 MA's), (Start: 48 @11673 has 1 MA's), (52, 11691), (67, 11766), (72, 11784), (73, 11787), (87, 11877), (88, 11883), (94, 11931), (100, 11949), (112, 12012), (113, 12024), (114, 12027), (121, 12066), (171, 12276), (175, 12288), (179, 12315), (183, 12333), (195, 12381), (201, 12405), (239, 12540), (242, 12549),

Gene: Hirko_9 Start: 8724, Stop: 9608, Start Num: 39

Candidate Starts for Hirko_9:

(Start: 39 @8724 has 48 MA's), (59, 8787), (86, 8940), (89, 8973), (128, 9159), (163, 9291), (222, 9465), (232, 9501),

Gene: Hitter_6 Start: 5209, Stop: 6138, Start Num: 44

Candidate Starts for Hitter_6:

(Start: 44 @5209 has 53 MA's), (51, 5224), (56, 5248), (63, 5284), (68, 5308), (89, 5446), (107, 5524), (112, 5551), (130, 5644), (131, 5650), (166, 5782), (176, 5812), (179, 5836), (183, 5851), (198, 5899), (200, 5911), (255, 6130),

Gene: Hortense_6 Start: 4904, Stop: 5836, Start Num: 42

Candidate Starts for Hortense_6:

(Start: 42 @4904 has 146 MA's), (51, 4928), (59, 4967), (60, 4970), (68, 5012), (81, 5075), (102, 5210), (107, 5228), (112, 5255), (129, 5339), (130, 5348), (146, 5411), (162, 5468), (167, 5486), (176, 5513), (179, 5537), (183, 5552), (192, 5582), (200, 5612), (211, 5651), (244, 5783), (247, 5792),

Gene: Howe_6 Start: 4904, Stop: 5836, Start Num: 42

Candidate Starts for Howe_6:

(Start: 42 @4904 has 146 MA's), (51, 4928), (59, 4967), (60, 4970), (68, 5012), (81, 5075), (102, 5210), (107, 5228), (112, 5255), (129, 5339), (130, 5348), (146, 5411), (162, 5468), (167, 5486), (176, 5513), (179, 5537), (183, 5552), (192, 5582), (200, 5612), (211, 5651), (244, 5783), (247, 5792),

Gene: HumptyDumpty_12 Start: 9680, Stop: 10576, Start Num: 39

Candidate Starts for HumptyDumpty_12:

(Start: 39 @9680 has 48 MA's), (81, 9851), (86, 9905), (108, 10019), (123, 10103), (149, 10202), (177, 10322), (222, 10439), (226, 10454), (244, 10526),

Gene: Ichiang_8 Start: 6248, Stop: 7177, Start Num: 40

Candidate Starts for Ichiang_8:

(Start: 40 @6248 has 13 MA's), (88, 6470), (112, 6599), (116, 6623), (175, 6869), (208, 6977), (214, 7001), (242, 7115),

Gene: Intolerant_15 Start: 11652, Stop: 12632, Start Num: 45

Candidate Starts for Intolerant_15:

(Start: 45 @11652 has 11 MA's), (Start: 48 @11658 has 1 MA's), (52, 11676), (67, 11751), (72, 11769), (73, 11772), (87, 11862), (88, 11868), (94, 11916), (100, 11934), (112, 11997), (113, 12009), (114, 12012), (121, 12051), (170, 12267), (171, 12270), (179, 12309), (239, 12534), (242, 12543), (251, 12582),

Gene: Invectra_7 Start: 5345, Stop: 6268, Start Num: 42

Candidate Starts for Invectra_7:

(Start: 42 @5345 has 146 MA's), (63, 5429), (74, 5477), (118, 5732), (121, 5750), (157, 5897), (158, 5900), (162, 5912), (181, 5984), (194, 6017), (214, 6092), (223, 6125), (238, 6191), (244, 6212), (254, 6257),

Gene: IsHungry_10 Start: 6554, Stop: 7483, Start Num: 40

Candidate Starts for IsHungry_10:

(Start: 40 @6554 has 13 MA's), (88, 6776), (104, 6866), (112, 6905), (116, 6929), (167, 7151), (208, 7283), (214, 7307), (242, 7421),

Gene: JCole_6 Start: 4854, Stop: 5777, Start Num: 42

Candidate Starts for JCole_6:

(Start: 42 @4854 has 146 MA's), (63, 4938), (74, 4986), (96, 5130), (116, 5229), (118, 5241), (158, 5409), (181, 5493), (188, 5514), (194, 5526), (203, 5565), (214, 5601), (223, 5634), (244, 5721),

Gene: JKerns_9 Start: 7607, Stop: 8494, Start Num: 39

Candidate Starts for JKerns_9:

(Start: 39 @7607 has 48 MA's), (96, 7889), (104, 7925), (111, 7961), (115, 7985), (132, 8054), (136, 8069), (152, 8123), (154, 8138), (167, 8192), (207, 8294), (220, 8342), (244, 8438),

Gene: JaNo_12 Start: 9680, Stop: 10576, Start Num: 39

Candidate Starts for JaNo_12:

(Start: 39 @9680 has 48 MA's), (81, 9851), (86, 9905), (108, 10019), (123, 10103), (149, 10202), (177, 10322), (222, 10439), (226, 10454), (244, 10526),

Gene: JackieB_15 Start: 11522, Stop: 12490, Start Num: 45

Candidate Starts for JackieB_15:

(Start: 45 @11522 has 11 MA's), (Start: 48 @11528 has 1 MA's), (52, 11546), (67, 11621), (72, 11639), (73, 11642), (87, 11732), (88, 11738), (94, 11786), (100, 11804), (112, 11867), (113, 11879), (114, 11882), (121, 11921), (171, 12131), (175, 12143), (179, 12170), (183, 12188), (195, 12236), (201, 12260), (239, 12395), (242, 12404),

Gene: Jalammah_6 Start: 5209, Stop: 6138, Start Num: 44

Candidate Starts for Jalammah_6:

(Start: 44 @5209 has 53 MA's), (51, 5224), (56, 5248), (63, 5284), (68, 5308), (89, 5446), (107, 5524), (112, 5551), (130, 5644), (131, 5650), (166, 5782), (176, 5812), (179, 5836), (183, 5851), (198, 5899), (200, 5911), (255, 6130),

Gene: Jalleen_6 Start: 4854, Stop: 5777, Start Num: 42

Candidate Starts for Jalleen_6:

(Start: 42 @4854 has 146 MA's), (63, 4938), (74, 4986), (96, 5130), (116, 5229), (118, 5241), (158, 5409), (181, 5493), (188, 5514), (194, 5526), (203, 5565), (214, 5601), (223, 5634), (244, 5721),

Gene: JasperJr_6 Start: 5213, Stop: 6142, Start Num: 44

Candidate Starts for JasperJr_6:

(Start: 44 @5213 has 53 MA's), (51, 5228), (56, 5252), (63, 5288), (68, 5312), (86, 5417), (89, 5450), (107, 5528), (112, 5555), (130, 5648), (131, 5654), (166, 5786), (176, 5816), (179, 5840), (183, 5855), (198, 5903), (200, 5915), (255, 6134),

Gene: Jawnski_8 Start: 7212, Stop: 8105, Start Num: 37

Candidate Starts for Jawnski_8:

(Start: 37 @7212 has 7 MA's), (89, 7467), (96, 7497), (111, 7569), (152, 7731), (157, 7767), (207, 7902), (220, 7950), (232, 7995), (238, 8025), (244, 8046),

Gene: JayCookie_12 Start: 9683, Stop: 10579, Start Num: 39

Candidate Starts for JayCookie_12:

(Start: 39 @9683 has 48 MA's), (81, 9854), (88, 9917), (108, 10022), (123, 10106), (149, 10205), (177, 10325), (199, 10373), (222, 10442), (226, 10457), (244, 10529),

Gene: Jebeks_6 Start: 5299, Stop: 6243, Start Num: 42

Candidate Starts for Jebeks_6:

(Start: 42 @5299 has 146 MA's), (54, 5332), (63, 5383), (89, 5545), (106, 5620), (111, 5647), (112, 5650), (116, 5674), (119, 5689), (121, 5704), (146, 5800), (157, 5854), (163, 5872), (173, 5905), (190, 5977), (212, 6058), (218, 6085), (229, 6121), (232, 6136), (244, 6187), (246, 6193), (254, 6232),

Gene: Jecs_6 Start: 5427, Stop: 6338, Start Num: 33

Candidate Starts for Jecs_6:

(Start: 33 @5427 has 4 MA's), (Start: 45 @5445 has 11 MA's), (89, 5694), (110, 5793), (118, 5835), (120, 5844), (137, 5904), (241, 6270), (245, 6282),

Gene: Jinkies_10 Start: 8046, Stop: 8930, Start Num: 39

Candidate Starts for Jinkies_10:

(Start: 39 @8046 has 48 MA's), (75, 8178), (86, 8262), (89, 8295), (111, 8397), (207, 8730), (230, 8814), (244, 8874),

Gene: Jordan_9 Start: 7577, Stop: 8464, Start Num: 39

Candidate Starts for Jordan_9:

(Start: 39 @7577 has 48 MA's), (96, 7859), (111, 7931), (115, 7955), (132, 8024), (136, 8039), (152, 8093), (154, 8108), (167, 8162), (207, 8264), (220, 8312), (244, 8408),

Gene: JuJu_6 Start: 5054, Stop: 5983, Start Num: 42

Candidate Starts for JuJu_6:

(Start: 42 @5054 has 146 MA's), (51, 5075), (60, 5117), (72, 5174), (81, 5222), (89, 5297), (96, 5327), (102, 5357), (107, 5375), (112, 5402), (113, 5414), (117, 5435), (129, 5486), (162, 5615), (166, 5630), (176, 5660), (197, 5744), (200, 5759), (210, 5795), (214, 5813), (244, 5930), (247, 5939),

Gene: Juicebox_9 Start: 6962, Stop: 7873, Start Num: 35

Candidate Starts for Juicebox_9:

(Start: 35 @6962 has 5 MA's), (46, 6977), (58, 7028), (59, 7031), (89, 7217), (95, 7244), (115, 7343), (117, 7355), (131, 7409), (196, 7643), (215, 7706), (220, 7721), (223, 7733), (234, 7781), (248, 7838), (249, 7844),

Gene: Julie_10 Start: 6785, Stop: 7696, Start Num: 43

Candidate Starts for Julie_10:

(Start: 43 @6785 has 14 MA's), (105, 7103), (157, 7337), (229, 7574), (244, 7640), (246, 7646),

Gene: Jung_6 Start: 5281, Stop: 6225, Start Num: 42

Candidate Starts for Jung_6:

(Start: 42 @5281 has 146 MA's), (55, 5326), (63, 5365), (89, 5527), (106, 5602), (111, 5629), (112, 5632), (116, 5656), (119, 5671), (121, 5686), (142, 5761), (146, 5782), (163, 5854), (173, 5887), (176, 5896), (190, 5959), (212, 6040), (213, 6043), (218, 6067), (229, 6103), (232, 6118), (246, 6175), (247, 6178), (254, 6214),

Gene: Juniormint_6 Start: 5302, Stop: 6246, Start Num: 42

Candidate Starts for Juniormint_6:

(Start: 42 @5302 has 146 MA's), (54, 5335), (63, 5386), (89, 5548), (106, 5623), (111, 5650), (116, 5677), (119, 5692), (121, 5707), (146, 5803), (157, 5857), (163, 5875), (173, 5908), (190, 5980), (212,

6061), (218, 6088), (229, 6124), (232, 6139), (244, 6190), (246, 6196), (254, 6235),

Gene: JustASigh_6 Start: 5596, Stop: 6537, Start Num: 43

Candidate Starts for JustASigh_6:

(Start: 43 @5596 has 14 MA's), (51, 5614), (61, 5668), (62, 5671), (65, 5686), (68, 5698), (89, 5836), (92, 5851), (93, 5857), (96, 5866), (102, 5896), (107, 5914), (113, 5953), (129, 6025), (130, 6034), (155, 6133), (189, 6265), (198, 6295), (239, 6463), (245, 6481), (255, 6526),

Gene: KBurrousTX_12 Start: 9457, Stop: 10353, Start Num: 39

Candidate Starts for KBurrousTX_12:

(Start: 39 @9457 has 48 MA's), (81, 9628), (88, 9691), (98, 9751), (112, 9820), (123, 9880), (146, 9970), (149, 9979), (176, 10084), (222, 10216), (244, 10303),

Gene: Kabreeze_12 Start: 9680, Stop: 10576, Start Num: 39

Candidate Starts for Kabreeze_12:

(Start: 39 @9680 has 48 MA's), (81, 9851), (86, 9905), (108, 10019), (123, 10103), (149, 10202), (177, 10322), (222, 10439), (226, 10454), (244, 10526),

Gene: KappaFarmDelta_6 Start: 5194, Stop: 6126, Start Num: 44

Candidate Starts for KappaFarmDelta_6:

(Start: 44 @5194 has 53 MA's), (51, 5209), (56, 5233), (63, 5269), (68, 5293), (86, 5398), (107, 5509), (112, 5536), (130, 5629), (165, 5764), (176, 5797), (179, 5821), (198, 5884), (200, 5896), (255, 6115),

Gene: Kari_6 Start: 5294, Stop: 6238, Start Num: 42

Candidate Starts for Kari_6:

(Start: 42 @5294 has 146 MA's), (55, 5339), (63, 5378), (89, 5540), (106, 5615), (111, 5642), (116, 5669), (119, 5684), (121, 5699), (142, 5774), (146, 5795), (163, 5867), (173, 5900), (176, 5909), (190, 5972), (212, 6053), (213, 6056), (218, 6080), (229, 6116), (232, 6131), (244, 6182), (246, 6188), (247, 6191), (254, 6227),

Gene: Kihatsu_11 Start: 6914, Stop: 7843, Start Num: 40

Candidate Starts for Kihatsu_11:

(Start: 40 @6914 has 13 MA's), (118, 7301), (120, 7310), (123, 7325), (128, 7346), (147, 7427), (152, 7442), (185, 7574), (214, 7667), (242, 7781),

Gene: Kiko_7 Start: 5416, Stop: 6342, Start Num: 42

Candidate Starts for Kiko_7:

(Start: 42 @5416 has 146 MA's), (63, 5500), (74, 5548), (109, 5758), (110, 5761), (117, 5800), (121, 5821), (128, 5848), (143, 5905), (146, 5920), (166, 6004), (167, 6007), (214, 6169),

Gene: KilKor_6 Start: 5281, Stop: 6225, Start Num: 42

Candidate Starts for KilKor_6:

(Start: 42 @5281 has 146 MA's), (55, 5326), (63, 5365), (89, 5527), (106, 5602), (111, 5629), (116, 5656), (119, 5671), (121, 5686), (142, 5761), (146, 5782), (163, 5854), (173, 5887), (176, 5896), (190, 5959), (212, 6040), (213, 6043), (218, 6067), (229, 6103), (232, 6118), (244, 6169), (246, 6175), (247, 6178), (254, 6214),

Gene: Kinbote_9 Start: 6586, Stop: 7542, Start Num: 42

Candidate Starts for Kinbote_9:

(Start: 42 @6586 has 146 MA's), (59, 6646), (67, 6688), (68, 6691), (89, 6829), (100, 6871), (104, 6895), (107, 6907), (113, 6946), (114, 6949), (115, 6955), (125, 7003), (129, 7018), (141, 7063), (167, 7180), (172, 7195), (176, 7207), (178, 7225), (186, 7255), (197, 7297), (198, 7300), (200, 7312), (212, 7354), (222, 7396), (255, 7531),

Gene: King2_8 Start: 7217, Stop: 8110, Start Num: 37

Candidate Starts for King2_8:

(Start: 37 @7217 has 7 MA's), (81, 7388), (89, 7472), (90, 7475), (96, 7502), (115, 7598), (132, 7667), (157, 7772), (207, 7907), (220, 7955), (230, 7991), (238, 8030),

Gene: Klevey_8 Start: 7102, Stop: 7989, Start Num: 39

Candidate Starts for Klevey_8:

(Start: 39 @7102 has 48 MA's), (75, 7234), (81, 7267), (89, 7351), (98, 7387), (104, 7417), (114, 7471), (136, 7561), (143, 7582), (157, 7651), (172, 7699), (230, 7870), (238, 7909),

Gene: Ksquared_6 Start: 5294, Stop: 6238, Start Num: 42

Candidate Starts for Ksquared_6:

(Start: 42 @5294 has 146 MA's), (55, 5339), (63, 5378), (89, 5540), (106, 5615), (111, 5642), (112, 5645), (116, 5669), (119, 5684), (121, 5699), (142, 5774), (146, 5795), (163, 5867), (173, 5900), (176, 5909), (190, 5972), (212, 6053), (213, 6056), (218, 6080), (229, 6116), (232, 6131), (244, 6182), (246, 6188), (247, 6191), (254, 6227),

Gene: Lamberg_6 Start: 4854, Stop: 5777, Start Num: 42

Candidate Starts for Lamberg_6:

(Start: 42 @4854 has 146 MA's), (63, 4938), (74, 4986), (96, 5130), (116, 5229), (118, 5241), (158, 5409), (181, 5493), (188, 5514), (194, 5526), (203, 5565), (214, 5601), (223, 5634),

Gene: Langerak_6 Start: 5299, Stop: 6243, Start Num: 42

Candidate Starts for Langerak_6:

(Start: 42 @5299 has 146 MA's), (54, 5332), (63, 5383), (89, 5545), (106, 5620), (111, 5647), (116, 5674), (119, 5689), (121, 5704), (146, 5800), (157, 5854), (163, 5872), (173, 5905), (190, 5977), (212, 6058), (218, 6085), (229, 6121), (232, 6136), (244, 6187), (246, 6193), (254, 6232),

Gene: LazerLemon_15 Start: 11860, Stop: 12828, Start Num: 45

Candidate Starts for LazerLemon_15:

(Start: 45 @11860 has 11 MA's), (Start: 48 @11866 has 1 MA's), (52, 11884), (67, 11959), (72, 11977), (73, 11980), (87, 12070), (88, 12076), (94, 12124), (100, 12142), (112, 12205), (113, 12217), (114, 12220), (121, 12259), (171, 12469), (175, 12481), (179, 12508), (188, 12547), (195, 12574), (201, 12598), (239, 12733), (242, 12742),

Gene: Lederberg_6 Start: 5118, Stop: 6050, Start Num: 47

Candidate Starts for Lederberg_6:

(31, 5085), (Start: 47 @5118 has 8 MA's), (89, 5355), (94, 5379), (101, 5409), (104, 5421), (111, 5457), (112, 5460), (117, 5493), (160, 5664), (166, 5691), (177, 5736), (192, 5790), (204, 5838), (224, 5910), (233, 5946), (234, 5958), (235, 5961), (240, 5982), (249, 6021), (254, 6039),

Gene: LeeroyJ_9 Start: 7549, Stop: 8436, Start Num: 39

Candidate Starts for LeeroyJ_9:

(Start: 39 @7549 has 48 MA's), (81, 7717), (96, 7831), (104, 7867), (115, 7927), (132, 7996), (157, 8101), (168, 8137), (198, 8218), (207, 8236), (220, 8284), (238, 8359), (244, 8380),

Gene: Lenoxika_10 Start: 6591, Stop: 7520, Start Num: 40

Candidate Starts for Lenoxika_10:

(Start: 40 @6591 has 13 MA's), (56, 6639), (88, 6813), (112, 6942), (116, 6966), (175, 7212), (208, 7320), (214, 7344), (227, 7392), (242, 7458),

Gene: LilHazelnut_9 Start: 6586, Stop: 7542, Start Num: 42

Candidate Starts for LilHazelnut_9:

(Start: 42 @6586 has 146 MA's), (59, 6646), (67, 6688), (68, 6691), (89, 6829), (100, 6871), (104, 6895), (107, 6907), (113, 6946), (114, 6949), (115, 6955), (125, 7003), (129, 7018), (141, 7063), (167, 7180), (172, 7195), (176, 7207), (178, 7225), (186, 7255), (197, 7297), (198, 7300), (200, 7312), (212, 7354), (222, 7396), (255, 7531),

Gene: Lilmac1015_8 Start: 7095, Stop: 7982, Start Num: 39

Candidate Starts for Lilmac1015_8:

(Start: 39 @7095 has 48 MA's), (75, 7227), (81, 7260), (89, 7344), (98, 7380), (104, 7410), (114, 7464), (143, 7575), (172, 7692), (211, 7791), (230, 7863), (231, 7869), (238, 7902),

Gene: Linus_12 Start: 9680, Stop: 10576, Start Num: 39

Candidate Starts for Linus_12:

(Start: 39 @9680 has 48 MA's), (81, 9851), (88, 9914), (108, 10019), (123, 10103), (149, 10202), (177, 10322), (199, 10370), (222, 10439), (226, 10454), (244, 10526),

Gene: LordFarquaad_6 Start: 4854, Stop: 5777, Start Num: 42

Candidate Starts for LordFarquaad_6:

(Start: 42 @4854 has 146 MA's), (63, 4938), (74, 4986), (96, 5130), (116, 5229), (118, 5241), (158, 5409), (181, 5493), (188, 5514), (194, 5526), (203, 5565), (214, 5601), (223, 5634), (244, 5721),

Gene: Luke_9 Start: 6586, Stop: 7542, Start Num: 42

Candidate Starts for Luke_9:

(Start: 42 @6586 has 146 MA's), (59, 6646), (67, 6688), (68, 6691), (89, 6829), (100, 6871), (104, 6895), (107, 6907), (113, 6946), (114, 6949), (115, 6955), (125, 7003), (129, 7018), (141, 7063), (167, 7180), (172, 7195), (176, 7207), (178, 7225), (186, 7255), (197, 7297), (198, 7300), (200, 7312), (212, 7354), (222, 7396), (255, 7531),

Gene: Lukepolites_8 Start: 7344, Stop: 8243, Start Num: 39

Candidate Starts for Lukepolites_8:

(Start: 39 @7344 has 48 MA's), (56, 7395), (59, 7410), (63, 7431), (69, 7458), (115, 7722), (117, 7734), (132, 7803), (143, 7839), (146, 7854), (159, 7914), (167, 7941), (199, 8031), (219, 8088), (225, 8109), (238, 8166), (249, 8214), (250, 8217), (252, 8223), (254, 8232),

Gene: Luna22_9 Start: 6586, Stop: 7542, Start Num: 42

Candidate Starts for Luna22_9:

(Start: 42 @6586 has 146 MA's), (59, 6646), (67, 6688), (68, 6691), (89, 6829), (100, 6871), (104, 6895), (107, 6907), (113, 6946), (114, 6949), (115, 6955), (125, 7003), (129, 7018), (141, 7063), (167, 7180), (172, 7195), (176, 7207), (178, 7225), (186, 7255), (197, 7297), (198, 7300), (200, 7312), (212, 7354), (222, 7396), (255, 7531),

Gene: Lymara_12 Start: 9669, Stop: 10565, Start Num: 39

Candidate Starts for Lymara_12:

(Start: 39 @9669 has 48 MA's), (81, 9840), (88, 9903), (108, 10008), (123, 10092), (149, 10191), (176, 10296), (222, 10428), (226, 10443), (244, 10515),

Gene: Lysidious_6 Start: 5209, Stop: 6138, Start Num: 44

Candidate Starts for Lysidious_6:

(Start: 44 @5209 has 53 MA's), (51, 5224), (56, 5248), (63, 5284), (68, 5308), (89, 5446), (107, 5524), (112, 5551), (130, 5644), (131, 5650), (166, 5782), (176, 5812), (179, 5836), (183, 5851), (198, 5899), (200, 5911), (255, 6130),

Gene: MagicMan_6 Start: 5427, Stop: 6338, Start Num: 33

Candidate Starts for MagicMan_6:

(20, 5319), (Start: 33 @5427 has 4 MA's), (Start: 45 @5445 has 11 MA's), (89, 5694), (110, 5793), (118, 5835), (120, 5844), (137, 5904), (241, 6270), (245, 6282),

Gene: Majeke_6 Start: 5299, Stop: 6243, Start Num: 42

Candidate Starts for Majeke_6:

(Start: 42 @5299 has 146 MA's), (54, 5332), (63, 5383), (89, 5545), (106, 5620), (111, 5647), (112, 5650), (116, 5674), (119, 5689), (121, 5704), (146, 5800), (157, 5854), (163, 5872), (173, 5905), (190, 5977), (212, 6058), (218, 6085), (229, 6121), (232, 6136), (244, 6187), (246, 6193), (254, 6232),

Gene: MakCheese_6 Start: 5413, Stop: 6345, Start Num: 44

Candidate Starts for MakCheese_6:

(1, 4711), (3, 4894), (Start: 44 @5413 has 53 MA's), (51, 5428), (65, 5500), (89, 5650), (104, 5716), (107, 5728), (113, 5767), (129, 5839), (131, 5854), (150, 5920), (167, 5989), (176, 6016), (179, 6040), (198, 6103), (200, 6115), (206, 6139), (245, 6289), (255, 6334),

Gene: Malachai_6 Start: 5212, Stop: 6141, Start Num: 44

Candidate Starts for Malachai_6:

(Start: 44 @5212 has 53 MA's), (51, 5227), (56, 5251), (63, 5287), (68, 5311), (86, 5416), (89, 5449), (107, 5527), (112, 5554), (130, 5647), (131, 5653), (166, 5785), (176, 5815), (179, 5839), (183, 5854), (198, 5902), (200, 5914), (255, 6133),

Gene: MalagasyRose_13 Start: 8001, Stop: 8906, Start Num: 39

Candidate Starts for MalagasyRose_13:

(Start: 39 @8001 has 48 MA's), (49, 8019), (59, 8064), (77, 8148), (79, 8157), (81, 8172), (86, 8229), (89, 8262), (157, 8565), (168, 8598), (172, 8610), (196, 8676), (215, 8739), (221, 8757), (242, 8844), (247, 8859),

Gene: Malibo_6 Start: 5429, Stop: 6361, Start Num: 44

Candidate Starts for Malibo_6:

(24, 5345), (Start: 44 @5429 has 53 MA's), (51, 5444), (65, 5516), (89, 5666), (104, 5732), (107, 5744), (108, 5747), (113, 5783), (130, 5864), (150, 5936), (176, 6032), (198, 6119), (200, 6131), (245, 6305),

Gene: Malithi_6 Start: 5294, Stop: 6238, Start Num: 42

Candidate Starts for Malithi_6:

(Start: 42 @5294 has 146 MA's), (55, 5339), (63, 5378), (89, 5540), (106, 5615), (111, 5642), (116, 5669), (119, 5684), (121, 5699), (142, 5774), (146, 5795), (163, 5867), (173, 5900), (176, 5909), (190, 5972), (212, 6053), (213, 6056), (218, 6080), (229, 6116), (232, 6131), (244, 6182), (246, 6188), (247, 6191), (254, 6227),

Gene: Mangethe_6 Start: 5299, Stop: 6243, Start Num: 42

Candidate Starts for Mangethe_6:

(Start: 42 @5299 has 146 MA's), (54, 5332), (63, 5383), (89, 5545), (106, 5620), (111, 5647), (112, 5650), (116, 5674), (119, 5689), (121, 5704), (146, 5800), (157, 5854), (163, 5872), (173, 5905), (190, 5977), (212, 6058), (218, 6085), (229, 6121), (232, 6136), (244, 6187), (246, 6193), (254, 6232),

Gene: Marky_16 Start: 11698, Stop: 12666, Start Num: 45

Candidate Starts for Marky_16:

(Start: 45 @11698 has 11 MA's), (Start: 48 @11704 has 1 MA's), (52, 11722), (67, 11797), (72, 11815), (73, 11818), (87, 11908), (94, 11962), (113, 12055), (121, 12097), (126, 12115), (148, 12208), (175, 12319), (179, 12346), (195, 12412), (201, 12436), (214, 12487), (239, 12571), (242, 12580),

Gene: Martha_9 Start: 7515, Stop: 8402, Start Num: 39

Candidate Starts for Martha_9:

(Start: 39 @7515 has 48 MA's), (96, 7797), (104, 7833), (111, 7869), (115, 7893), (132, 7962), (136, 7977), (152, 8031), (154, 8046), (167, 8100), (207, 8202), (220, 8250), (244, 8346),

Gene: Matteo_6 Start: 4854, Stop: 5777, Start Num: 42

Candidate Starts for Matteo_6:

(Start: 42 @4854 has 146 MA's), (63, 4938), (74, 4986), (96, 5130), (116, 5229), (118, 5241), (158, 5409), (181, 5493), (188, 5514), (194, 5526), (203, 5565), (214, 5601), (223, 5634), (244, 5721),

Gene: Mbo4_6 Start: 5456, Stop: 6385, Start Num: 44

Candidate Starts for Mbo4_6:

(Start: 44 @5456 has 53 MA's), (51, 5471), (81, 5618), (102, 5753), (107, 5771), (112, 5798), (167, 6032), (182, 6095), (210, 6194), (211, 6197), (250, 6359),

Gene: Megiddo_6 Start: 5281, Stop: 6225, Start Num: 42

Candidate Starts for Megiddo_6:

(Start: 42 @5281 has 146 MA's), (55, 5326), (63, 5365), (89, 5527), (106, 5602), (111, 5629), (116, 5656), (119, 5671), (121, 5686), (142, 5761), (146, 5782), (163, 5854), (173, 5887), (176, 5896), (190, 5959), (212, 6040), (213, 6043), (218, 6067), (229, 6103), (232, 6118), (244, 6169), (246, 6175), (247, 6178), (254, 6214),

Gene: Melba_6 Start: 5209, Stop: 6138, Start Num: 44

Candidate Starts for Melba_6:

(Start: 44 @5209 has 53 MA's), (51, 5224), (56, 5248), (63, 5284), (68, 5308), (86, 5413), (89, 5446), (107, 5524), (112, 5551), (130, 5644), (131, 5650), (166, 5782), (176, 5812), (179, 5836), (183, 5851), (198, 5899), (200, 5911), (255, 6130),

Gene: Mellie_6 Start: 5209, Stop: 6138, Start Num: 44

Candidate Starts for Mellie_6:

(Start: 44 @5209 has 53 MA's), (51, 5224), (56, 5248), (63, 5284), (68, 5308), (89, 5446), (107, 5524), (112, 5551), (130, 5644), (131, 5650), (166, 5782), (176, 5812), (179, 5836), (183, 5851), (198, 5899), (200, 5911), (255, 6130),

Gene: MichaelScott_7 Start: 5345, Stop: 6268, Start Num: 42

Candidate Starts for MichaelScott_7:

(Start: 42 @5345 has 146 MA's), (63, 5429), (74, 5477), (118, 5732), (121, 5750), (157, 5897), (162, 5912), (181, 5984), (194, 6017), (214, 6092), (223, 6125), (238, 6191), (244, 6212), (254, 6257),

Gene: Microdon_15 Start: 11458, Stop: 12438, Start Num: 45

Candidate Starts for Microdon_15:

(Start: 45 @11458 has 11 MA's), (Start: 48 @11464 has 1 MA's), (52, 11482), (67, 11557), (72, 11575), (73, 11578), (87, 11668), (88, 11674), (94, 11722), (100, 11740), (112, 11803), (113, 11815), (114, 11818), (121, 11857), (138, 11923), (170, 12073), (171, 12076), (179, 12115), (214, 12256), (239, 12340), (242, 12349), (251, 12388),

Gene: MillySue_10 Start: 6548, Stop: 7459, Start Num: 43

Candidate Starts for MillySue_10:

(Start: 43 @6548 has 14 MA's), (105, 6866), (157, 7100), (229, 7337), (244, 7403), (246, 7409),

Gene: MintFen_6 Start: 5209, Stop: 6138, Start Num: 44

Candidate Starts for MintFen_6:

(Start: 44 @5209 has 53 MA's), (51, 5224), (56, 5248), (63, 5284), (68, 5308), (86, 5413), (89, 5446), (107, 5524), (112, 5551), (130, 5644), (131, 5650), (166, 5782), (176, 5812), (179, 5836), (183, 5851),

(198, 5899), (200, 5911), (255, 6130),

Gene: MissRona_6 Start: 5041, Stop: 5970, Start Num: 42

Candidate Starts for MissRona_6:

(Start: 42 @5041 has 146 MA's), (51, 5062), (60, 5104), (72, 5161), (81, 5209), (89, 5284), (96, 5314), (102, 5344), (107, 5362), (112, 5389), (113, 5401), (117, 5422), (129, 5473), (140, 5509), (162, 5602), (166, 5617), (176, 5647), (200, 5746), (210, 5782), (214, 5800), (244, 5917), (247, 5926),

Gene: Mocha12_6 Start: 4854, Stop: 5777, Start Num: 42

Candidate Starts for Mocha12_6:

(Start: 42 @4854 has 146 MA's), (63, 4938), (74, 4986), (96, 5130), (116, 5229), (118, 5241), (158, 5409), (181, 5493), (188, 5514), (194, 5526), (203, 5565), (214, 5601), (223, 5634), (244, 5721),

Gene: Moonflower_7 Start: 5587, Stop: 6507, Start Num: 42

Candidate Starts for Moonflower_7:

(13, 5440), (Start: 42 @5587 has 146 MA's), (63, 5671), (96, 5863), (138, 6052), (145, 6082), (149, 6094), (158, 6142), (163, 6157), (167, 6172), (187, 6241), (188, 6247), (203, 6298), (214, 6334), (232, 6400), (236, 6421), (238, 6430), (254, 6496),

Gene: Mordred_12 Start: 9680, Stop: 10576, Start Num: 39

Candidate Starts for Mordred_12:

(Start: 39 @9680 has 48 MA's), (81, 9851), (86, 9905), (108, 10019), (123, 10103), (149, 10202), (177, 10322), (222, 10439), (226, 10454), (244, 10526),

Gene: MoyaNatalis_12 Start: 9683, Stop: 10579, Start Num: 39

Candidate Starts for MoyaNatalis_12:

(Start: 39 @9683 has 48 MA's), (81, 9854), (88, 9917), (108, 10022), (123, 10106), (149, 10205), (177, 10325), (222, 10442), (226, 10457), (244, 10529),

Gene: Mulch_10 Start: 6844, Stop: 7776, Start Num: 44

Candidate Starts for Mulch_10:

(Start: 44 @6844 has 53 MA's), (51, 6859), (62, 6916), (63, 6919), (65, 6931), (89, 7081), (96, 7111), (104, 7147), (107, 7159), (113, 7198), (130, 7279), (176, 7447), (183, 7486), (209, 7579), (245, 7720), (255, 7765),

Gene: Murp_6 Start: 5197, Stop: 6129, Start Num: 44

Candidate Starts for Murp_6:

(Start: 44 @5197 has 53 MA's), (51, 5212), (56, 5236), (63, 5272), (68, 5296), (86, 5401), (107, 5512), (112, 5539), (130, 5632), (165, 5767), (176, 5800), (179, 5824), (198, 5887), (200, 5899), (255, 6118),

Gene: Music_10 Start: 9165, Stop: 10046, Start Num: 39

Candidate Starts for Music_10:

(Start: 39 @9165 has 48 MA's), (86, 9378), (89, 9411), (104, 9477), (111, 9513), (132, 9606), (207, 9846), (222, 9903), (231, 9936), (244, 9990),

Gene: NaLuna_6 Start: 5209, Stop: 6126, Start Num: 43

Candidate Starts for NaLuna_6:

(4, 4852), (11, 5053), (23, 5125), (25, 5128), (Start: 43 @5209 has 14 MA's), (76, 5344), (81, 5377), (96, 5482), (147, 5707), (162, 5773), (163, 5776), (167, 5791), (171, 5803), (172, 5806), (175, 5815), (181, 5845), (187, 5860), (188, 5866), (214, 5953), (232, 6019), (236, 6040), (238, 6049), (244, 6070),

Gene: Nadeem_10 Start: 6844, Stop: 7776, Start Num: 44

Candidate Starts for Nadeem_10:

(Start: 44 @6844 has 53 MA's), (51, 6859), (62, 6916), (63, 6919), (65, 6931), (89, 7081), (96, 7111), (104, 7147), (107, 7159), (113, 7198), (130, 7279), (176, 7447), (183, 7486), (209, 7579), (245, 7720), (255, 7765),

Gene: NancyRae_10 Start: 6844, Stop: 7776, Start Num: 44

Candidate Starts for NancyRae_10:

(Start: 44 @6844 has 53 MA's), (51, 6859), (62, 6916), (63, 6919), (65, 6931), (89, 7081), (96, 7111), (104, 7147), (107, 7159), (113, 7198), (130, 7279), (176, 7447), (183, 7486), (209, 7579), (245, 7720), (255, 7765),

Gene: Nandita_10 Start: 6592, Stop: 7521, Start Num: 40

Candidate Starts for Nandita_10:

(Start: 40 @6592 has 13 MA's), (56, 6640), (88, 6814), (112, 6943), (116, 6967), (175, 7213), (208, 7321), (214, 7345), (227, 7393), (242, 7459),

Gene: Nandito_8 Start: 7117, Stop: 8001, Start Num: 39

Candidate Starts for Nandito_8:

(Start: 39 @7117 has 48 MA's), (75, 7249), (81, 7282), (89, 7366), (114, 7486), (143, 7597), (157, 7666), (172, 7714), (238, 7924), (246, 7951),

Gene: NathanVaag_8 Start: 7217, Stop: 8110, Start Num: 37

Candidate Starts for NathanVaag_8:

(Start: 37 @7217 has 7 MA's), (89, 7472), (96, 7502), (111, 7574), (152, 7736), (157, 7772), (175, 7829), (207, 7907), (220, 7955), (232, 8000), (238, 8030), (244, 8051),

Gene: Nazo_6 Start: 5266, Stop: 6216, Start Num: 42

Candidate Starts for Nazo_6:

(Start: 42 @5266 has 146 MA's), (63, 5350), (64, 5353), (106, 5587), (111, 5614), (116, 5641), (119, 5656), (121, 5671), (146, 5773), (163, 5845), (173, 5878), (176, 5887), (181, 5923), (188, 5944), (190, 5950), (207, 6016), (212, 6031), (218, 6058), (232, 6109), (246, 6166), (254, 6205),

Gene: Necropolis_6 Start: 5294, Stop: 6238, Start Num: 42

Candidate Starts for Necropolis_6:

(Start: 42 @5294 has 146 MA's), (55, 5339), (63, 5378), (89, 5540), (106, 5615), (111, 5642), (116, 5669), (119, 5684), (121, 5699), (142, 5774), (146, 5795), (163, 5867), (173, 5900), (176, 5909), (190, 5972), (212, 6053), (213, 6056), (218, 6080), (229, 6116), (232, 6131), (244, 6182), (246, 6188), (247, 6191), (254, 6227),

Gene: Nergal_11 Start: 8449, Stop: 9354, Start Num: 39

Candidate Starts for Nergal_11:

(Start: 39 @8449 has 48 MA's), (49, 8467), (59, 8512), (81, 8620), (85, 8650), (112, 8815), (157, 9013), (166, 9040), (196, 9124), (215, 9187), (221, 9205), (244, 9298), (247, 9307),

Gene: Nettuno_6 Start: 4854, Stop: 5777, Start Num: 42

Candidate Starts for Nettuno_6:

(Start: 42 @4854 has 146 MA's), (63, 4938), (74, 4986), (96, 5130), (116, 5229), (118, 5241), (158, 5409), (181, 5493), (188, 5514), (194, 5526), (203, 5565), (214, 5601), (223, 5634),

Gene: Nostromo_8 Start: 7603, Stop: 8493, Start Num: 39

Candidate Starts for Nostromo_8:

(Start: 39 @7603 has 48 MA's), (82, 7771), (89, 7852), (104, 7918), (117, 7990), (128, 8038), (143, 8083), (199, 8275), (220, 8335), (238, 8410),

Gene: NovoPizza_7 Start: 6709, Stop: 7668, Start Num: 42

Candidate Starts for NovoPizza_7:

(10, 6511), (17, 6577), (Start: 42 @6709 has 146 MA's), (67, 6811), (68, 6814), (104, 7018), (107, 7030), (113, 7069), (122, 7114), (130, 7150), (131, 7156), (167, 7309), (172, 7324), (176, 7336), (178, 7354), (179, 7360), (193, 7411), (197, 7423), (200, 7438), (209, 7471), (211, 7477), (222, 7522), (250, 7639),

Gene: OBUpride_9 Start: 6580, Stop: 7536, Start Num: 42

Candidate Starts for OBUpride_9:

(Start: 42 @6580 has 146 MA's), (59, 6640), (67, 6682), (68, 6685), (89, 6823), (100, 6865), (104, 6889), (107, 6901), (113, 6940), (114, 6943), (115, 6949), (125, 6997), (129, 7012), (141, 7057), (167, 7174), (172, 7189), (176, 7201), (178, 7219), (186, 7249), (197, 7291), (198, 7294), (200, 7306), (212, 7348), (222, 7390), (255, 7525),

Gene: Obliviate_6 Start: 5233, Stop: 6162, Start Num: 44

Candidate Starts for Obliviate_6:

(Start: 44 @5233 has 53 MA's), (51, 5248), (56, 5272), (63, 5308), (68, 5332), (89, 5470), (107, 5548), (112, 5575), (130, 5668), (131, 5674), (166, 5806), (176, 5836), (179, 5860), (183, 5875), (198, 5923), (200, 5935), (255, 6154),

Gene: Ohgeesy_6 Start: 4895, Stop: 5824, Start Num: 42

Candidate Starts for Ohgeesy_6:

(Start: 42 @4895 has 146 MA's), (60, 4958), (68, 5000), (89, 5138), (102, 5198), (107, 5216), (129, 5327), (166, 5471), (176, 5501), (197, 5585), (200, 5600), (226, 5699), (244, 5771), (247, 5780),

Gene: Opie_6 Start: 5436, Stop: 6347, Start Num: 33

Candidate Starts for Opie_6:

(Start: 33 @5436 has 4 MA's), (Start: 45 @5454 has 11 MA's), (89, 5703), (110, 5802), (118, 5844), (120, 5853), (137, 5913), (241, 6279), (245, 6291),

Gene: Oregano_7 Start: 5016, Stop: 5939, Start Num: 42

Candidate Starts for Oregano_7:

(Start: 42 @5016 has 146 MA's), (63, 5100), (74, 5148), (118, 5403), (121, 5421), (157, 5568), (158, 5571), (162, 5583), (181, 5655), (194, 5688), (214, 5763), (223, 5796), (238, 5862), (244, 5883), (254, 5928),

Gene: Orkz_12 Start: 7803, Stop: 8696, Start Num: 33

Candidate Starts for Orkz_12:

(Start: 33 @7803 has 4 MA's), (66, 7911), (78, 7959), (89, 8061), (93, 8082), (111, 8163), (132, 8256), (220, 8544), (224, 8559), (236, 8610), (244, 8640),

Gene: PCoral7_6 Start: 5209, Stop: 6138, Start Num: 44

Candidate Starts for PCoral7_6:

(Start: 44 @5209 has 53 MA's), (51, 5224), (63, 5284), (86, 5413), (101, 5500), (107, 5524), (129, 5635), (131, 5650), (166, 5782), (176, 5812), (198, 5899), (199, 5905), (200, 5911), (255, 6130),

Gene: PantheRoc_6 Start: 4895, Stop: 5824, Start Num: 42

Candidate Starts for PantheRoc_6:

(Start: 42 @4895 has 146 MA's), (60, 4958), (68, 5000), (89, 5138), (102, 5198), (107, 5216), (129, 5327), (166, 5471), (176, 5501), (197, 5585), (200, 5600), (226, 5699), (244, 5771), (247, 5780),

Gene: Parada_10 Start: 6844, Stop: 7776, Start Num: 44

Candidate Starts for Parada_10:

(Start: 44 @6844 has 53 MA's), (51, 6859), (62, 6916), (63, 6919), (65, 6931), (89, 7081), (96, 7111), (104, 7147), (107, 7159), (113, 7198), (130, 7279), (176, 7447), (183, 7486), (209, 7579), (245, 7720), (255, 7765),

Gene: PatriciaStar_6 Start: 5197, Stop: 6117, Start Num: 42

Candidate Starts for PatriciaStar_6:

(Start: 42 @5197 has 146 MA's), (63, 5281), (81, 5368), (109, 5539), (121, 5602), (145, 5692), (158, 5752), (167, 5782), (191, 5860), (206, 5914), (207, 5917), (214, 5944), (226, 5986), (242, 6055), (244, 6061),

Gene: PeanutPie_6 Start: 5285, Stop: 6229, Start Num: 42

Candidate Starts for PeanutPie_6:

(Start: 42 @5285 has 146 MA's), (55, 5330), (63, 5369), (89, 5531), (106, 5606), (111, 5633), (112, 5636), (116, 5660), (119, 5675), (121, 5690), (142, 5765), (146, 5786), (163, 5858), (173, 5891), (176, 5900), (190, 5963), (212, 6044), (218, 6071), (229, 6107), (232, 6122), (244, 6173), (246, 6179), (247, 6182), (254, 6218),

Gene: Petra_6 Start: 5041, Stop: 5970, Start Num: 42

Candidate Starts for Petra_6:

(Start: 42 @5041 has 146 MA's), (51, 5062), (60, 5104), (72, 5161), (81, 5209), (89, 5284), (96, 5314), (102, 5344), (107, 5362), (112, 5389), (113, 5401), (117, 5422), (129, 5473), (140, 5509), (162, 5602), (166, 5617), (176, 5647), (197, 5731), (200, 5746), (210, 5782), (214, 5800), (244, 5917), (247, 5926),

Gene: Phalm_6 Start: 5281, Stop: 6225, Start Num: 42

Candidate Starts for Phalm_6:

(Start: 42 @5281 has 146 MA's), (55, 5326), (63, 5365), (89, 5527), (106, 5602), (111, 5629), (116, 5656), (119, 5671), (121, 5686), (142, 5761), (146, 5782), (163, 5854), (173, 5887), (176, 5896), (190, 5959), (212, 6040), (213, 6043), (218, 6067), (229, 6103), (232, 6118), (244, 6169), (246, 6175), (247, 6178), (254, 6214),

Gene: PhaoMing_6 Start: 5639, Stop: 6544, Start Num: 32

Candidate Starts for PhaoMing_6:

(32, 5639), (54, 5687), (59, 5717), (82, 5828), (90, 5909), (109, 6002), (114, 6026), (135, 6113), (174, 6257), (175, 6260), (205, 6338), (207, 6344), (221, 6395), (223, 6404), (237, 6464), (238, 6467), (244, 6488), (249, 6515),

Gene: Phayonce_6 Start: 5268, Stop: 6224, Start Num: 42

Candidate Starts for Phayonce_6:

(Start: 42 @5268 has 146 MA's), (55, 5313), (63, 5352), (64, 5355), (70, 5385), (88, 5490), (103, 5577), (106, 5589), (111, 5616), (116, 5643), (118, 5655), (121, 5673), (146, 5781), (157, 5835), (163, 5853), (173, 5886), (190, 5958), (212, 6039), (217, 6063), (218, 6066), (232, 6117), (244, 6168), (246, 6174), (254, 6213),

Gene: Phegasus_6 Start: 5299, Stop: 6243, Start Num: 42

Candidate Starts for Phegasus_6:

(Start: 42 @5299 has 146 MA's), (54, 5332), (63, 5383), (89, 5545), (106, 5620), (111, 5647), (112, 5650), (116, 5674), (119, 5689), (121, 5704), (146, 5800), (157, 5854), (163, 5872), (173, 5905), (190, 5977), (212, 6058), (218, 6085), (229, 6121), (232, 6136), (244, 6187), (246, 6193), (254, 6232),

Gene: Phineas_6 Start: 5282, Stop: 6226, Start Num: 42

Candidate Starts for Phineas_6:

(Start: 42 @5282 has 146 MA's), (55, 5327), (63, 5366), (89, 5528), (106, 5603), (111, 5630), (116, 5657), (119, 5672), (121, 5687), (142, 5762), (146, 5783), (163, 5855), (173, 5888), (176, 5897), (190,

5960), (212, 6041), (213, 6044), (218, 6068), (229, 6104), (232, 6119), (244, 6170), (246, 6176), (247, 6179), (254, 6215),

Gene: PhriskyACE_6 Start: 4843, Stop: 5766, Start Num: 42

Candidate Starts for PhriskyACE_6:

(Start: 42 @4843 has 146 MA's), (63, 4927), (74, 4975), (118, 5230), (121, 5248), (157, 5395), (158, 5398), (162, 5410), (181, 5482), (194, 5515), (214, 5590), (223, 5623), (238, 5689), (242, 5704), (244, 5710), (254, 5755),

Gene: PhrostedPhlake_6 Start: 5231, Stop: 6163, Start Num: 44

Candidate Starts for PhrostedPhlake_6:

(Start: 44 @5231 has 53 MA's), (51, 5246), (56, 5270), (63, 5306), (68, 5330), (86, 5435), (107, 5546), (112, 5573), (130, 5666), (165, 5801), (176, 5834), (179, 5858), (183, 5873), (198, 5921), (200, 5933), (255, 6152),

Gene: Piccoletto_8 Start: 7218, Stop: 8111, Start Num: 37

Candidate Starts for Piccoletto_8:

(Start: 37 @7218 has 7 MA's), (89, 7473), (96, 7503), (111, 7575), (157, 7773), (207, 7908), (220, 7956), (232, 8001), (238, 8031), (244, 8052),

Gene: Pickett_6 Start: 4854, Stop: 5777, Start Num: 42

Candidate Starts for Pickett_6:

(Start: 42 @4854 has 146 MA's), (63, 4938), (74, 4986), (96, 5130), (116, 5229), (118, 5241), (158, 5409), (181, 5493), (188, 5514), (194, 5526), (203, 5565), (214, 5601), (223, 5634), (244, 5721),

Gene: Pimento_10 Start: 6841, Stop: 7773, Start Num: 44

Candidate Starts for Pimento_10:

(Start: 44 @6841 has 53 MA's), (51, 6856), (62, 6913), (63, 6916), (65, 6928), (89, 7078), (96, 7108), (104, 7144), (107, 7156), (113, 7195), (130, 7276), (176, 7444), (183, 7483), (209, 7576), (245, 7717), (255, 7762),

Gene: Pipp_6 Start: 5233, Stop: 6162, Start Num: 44

Candidate Starts for Pipp_6:

(Start: 44 @5233 has 53 MA's), (51, 5248), (56, 5272), (63, 5308), (68, 5332), (86, 5437), (107, 5548), (112, 5575), (129, 5659), (130, 5668), (131, 5674), (166, 5806), (176, 5836), (179, 5860), (198, 5923), (200, 5935), (255, 6154),

Gene: Pippa_9 Start: 7607, Stop: 8494, Start Num: 39

Candidate Starts for Pippa_9:

(Start: 39 @7607 has 48 MA's), (78, 7757), (96, 7889), (111, 7961), (132, 8054), (136, 8069), (152, 8123), (154, 8138), (167, 8192), (215, 8327), (220, 8342), (238, 8417), (244, 8438),

Gene: Polkaroo_6 Start: 5294, Stop: 6238, Start Num: 42

Candidate Starts for Polkaroo_6:

(Start: 42 @5294 has 146 MA's), (55, 5339), (63, 5378), (89, 5540), (106, 5615), (111, 5642), (116, 5669), (119, 5684), (121, 5699), (142, 5774), (146, 5795), (163, 5867), (173, 5900), (176, 5909), (190, 5972), (212, 6053), (213, 6056), (218, 6080), (229, 6116), (232, 6131), (244, 6182), (246, 6188), (247, 6191), (254, 6227),

Gene: Popper_8 Start: 6084, Stop: 7013, Start Num: 40

Candidate Starts for Popper_8:

(Start: 40 @6084 has 13 MA's), (53, 6117), (88, 6306), (104, 6396), (107, 6408), (112, 6435), (116, 6459), (214, 6837), (242, 6951), (244, 6957),

Gene: Poushou_9 Start: 7329, Stop: 8234, Start Num: 35

Candidate Starts for Poushou_9:

(Start: 35 @7329 has 5 MA's), (59, 7398), (71, 7455), (83, 7515), (85, 7533), (86, 7551), (109, 7680), (112, 7689), (117, 7722), (128, 7770), (166, 7914), (172, 7932), (192, 7989), (223, 8094), (229, 8112), (243, 8175),

Gene: Powerball_6 Start: 4843, Stop: 5766, Start Num: 42

Candidate Starts for Powerball_6:

(Start: 42 @4843 has 146 MA's), (63, 4927), (74, 4975), (118, 5230), (121, 5248), (145, 5338), (167, 5428), (214, 5590), (223, 5623), (227, 5638), (238, 5689), (244, 5710), (254, 5755),

Gene: Prairie_8 Start: 7102, Stop: 7989, Start Num: 39

Candidate Starts for Prairie_8:

(Start: 39 @7102 has 48 MA's), (75, 7234), (81, 7267), (89, 7351), (98, 7387), (104, 7417), (114, 7471), (136, 7561), (143, 7582), (157, 7651), (172, 7699), (230, 7870), (238, 7909),

Gene: PrincePatrick_6 Start: 5210, Stop: 6139, Start Num: 44

Candidate Starts for PrincePatrick_6:

(Start: 44 @5210 has 53 MA's), (51, 5225), (63, 5285), (65, 5297), (86, 5414), (101, 5501), (107, 5525), (129, 5636), (131, 5651), (166, 5783), (176, 5813), (198, 5900), (200, 5912), (255, 6131),

Gene: PrincessTrina_12 Start: 9683, Stop: 10579, Start Num: 39

Candidate Starts for PrincessTrina_12:

(Start: 39 @9683 has 48 MA's), (81, 9854), (88, 9917), (108, 10022), (123, 10106), (149, 10205), (177, 10325), (199, 10373), (222, 10442), (226, 10457), (244, 10529),

Gene: Purky_6 Start: 5271, Stop: 6215, Start Num: 42

Candidate Starts for Purky_6:

(Start: 42 @5271 has 146 MA's), (63, 5355), (70, 5388), (88, 5493), (103, 5580), (106, 5592), (111, 5619), (116, 5646), (118, 5658), (121, 5676), (142, 5751), (146, 5772), (157, 5826), (163, 5844), (167, 5859), (173, 5877), (190, 5949), (212, 6030), (217, 6054), (218, 6057), (232, 6108), (246, 6165), (254, 6204),

Gene: Pygmy_6 Start: 5282, Stop: 6226, Start Num: 42

Candidate Starts for Pygmy_6:

(Start: 42 @5282 has 146 MA's), (55, 5327), (63, 5366), (89, 5528), (106, 5603), (111, 5630), (116, 5657), (119, 5672), (121, 5687), (142, 5762), (146, 5783), (163, 5855), (173, 5888), (176, 5897), (190, 5960), (212, 6041), (229, 6104), (232, 6119), (246, 6176), (247, 6179), (254, 6215),

Gene: QuinnAvery_10 Start: 6551, Stop: 7462, Start Num: 43

Candidate Starts for QuinnAvery_10:

(28, 6503), (Start: 43 @6551 has 14 MA's), (157, 7103), (229, 7340), (244, 7406), (246, 7412),

Gene: REQ2_06 Start: 4914, Stop: 5852, Start Num: 43

Candidate Starts for REQ2_06:

(5, 4599), (6, 4641), (18, 4800), (Start: 43 @4914 has 14 MA's), (51, 4932), (56, 4956), (75, 5043), (97, 5187), (107, 5232), (112, 5259), (139, 5370), (167, 5496), (172, 5511), (176, 5523), (179, 5547), (202, 5628), (245, 5796), (255, 5841),

Gene: RayTheFireFly_7 Start: 5588, Stop: 6508, Start Num: 42

Candidate Starts for RayTheFireFly_7:

(Start: 42 @5588 has 146 MA's), (63, 5672), (96, 5864), (138, 6053), (145, 6083), (149, 6095), (158, 6143), (163, 6158), (167, 6173), (187, 6242), (188, 6248), (203, 6299), (207, 6308), (214, 6335), (232, 6401), (236, 6422), (238, 6431), (254, 6497),

Gene: Rem711_12 Start: 8310, Stop: 9215, Start Num: 34

Candidate Starts for Rem711_12:

(Start: 34 @8310 has 1 MA's), (58, 8379), (104, 8640), (112, 8679), (124, 8745), (127, 8757), (153, 8841), (175, 8928), (228, 9090), (245, 9162), (247, 9168),

Gene: Rizz_8 Start: 5345, Stop: 6268, Start Num: 42

Candidate Starts for Rizz_8:

(Start: 42 @5345 has 146 MA's), (63, 5429), (74, 5477), (118, 5732), (121, 5750), (157, 5897), (162, 5912), (181, 5984), (194, 6017), (214, 6092), (223, 6125), (238, 6191), (244, 6212), (254, 6257),

Gene: RosiePosie_12 Start: 9683, Stop: 10579, Start Num: 39

Candidate Starts for RosiePosie_12:

(Start: 39 @9683 has 48 MA's), (81, 9854), (88, 9917), (108, 10022), (123, 10106), (149, 10205), (177, 10325), (222, 10442), (226, 10457), (244, 10529),

Gene: Ruthy_6 Start: 5494, Stop: 6426, Start Num: 44

Candidate Starts for Ruthy_6:

(Start: 44 @5494 has 53 MA's), (51, 5509), (65, 5581), (89, 5731), (104, 5797), (107, 5809), (108, 5812), (113, 5848), (130, 5929), (150, 6001), (176, 6097), (179, 6121), (198, 6184), (245, 6370),

Gene: Ryan_10 Start: 6702, Stop: 7631, Start Num: 40

Candidate Starts for Ryan_10:

(Start: 40 @6702 has 13 MA's), (88, 6924), (104, 7014), (116, 7077), (208, 7431), (214, 7455), (242, 7569),

Gene: Sahara_6 Start: 4845, Stop: 5768, Start Num: 42

Candidate Starts for Sahara_6:

(Start: 42 @4845 has 146 MA's), (63, 4929), (74, 4977), (96, 5121), (116, 5220), (118, 5232), (121, 5250), (158, 5400), (181, 5484), (188, 5505), (194, 5517), (214, 5592), (223, 5625), (244, 5712),

Gene: Saintcarr_9 Start: 6556, Stop: 7467, Start Num: 43

Candidate Starts for Saintcarr_9:

(Start: 43 @6556 has 14 MA's), (105, 6874), (118, 6946), (157, 7108), (229, 7345), (244, 7411), (246, 7417),

Gene: SamW_6 Start: 5118, Stop: 6050, Start Num: 47

Candidate Starts for SamW_6:

(31, 5085), (Start: 47 @5118 has 8 MA's), (89, 5355), (94, 5379), (101, 5409), (104, 5421), (111, 5457), (112, 5460), (117, 5493), (160, 5664), (166, 5691), (177, 5736), (192, 5790), (204, 5838), (224, 5910), (233, 5946), (234, 5958), (235, 5961), (240, 5982), (249, 6021), (254, 6039),

Gene: Samba_6 Start: 5210, Stop: 6139, Start Num: 44

Candidate Starts for Samba_6:

(Start: 44 @5210 has 53 MA's), (51, 5225), (56, 5249), (63, 5285), (68, 5309), (86, 5414), (89, 5447), (107, 5525), (112, 5552), (130, 5645), (131, 5651), (166, 5783), (176, 5813), (179, 5837), (183, 5852), (198, 5900), (200, 5912), (255, 6131),

Gene: Samman98_7 Start: 5345, Stop: 6268, Start Num: 42

Candidate Starts for Samman98_7:

(Start: 42 @5345 has 146 MA's), (63, 5429), (74, 5477), (118, 5732), (121, 5750), (157, 5897), (158, 5900), (162, 5912), (181, 5984), (194, 6017), (214, 6092), (223, 6125), (238, 6191), (244, 6212), (254, 6257),

Gene: Savage_6 Start: 4854, Stop: 5777, Start Num: 42

Candidate Starts for Savage_6:

(Start: 42 @4854 has 146 MA's), (63, 4938), (74, 4986), (96, 5130), (116, 5229), (118, 5241), (158, 5409), (181, 5493), (188, 5514), (194, 5526), (203, 5565), (214, 5601), (223, 5634), (244, 5721),

Gene: Scavito_12 Start: 9680, Stop: 10576, Start Num: 39

Candidate Starts for Scavito_12:

(Start: 39 @9680 has 48 MA's), (81, 9851), (86, 9905), (108, 10019), (123, 10103), (149, 10202), (177, 10322), (222, 10439), (226, 10454), (244, 10526),

Gene: Schism_10 Start: 6592, Stop: 7521, Start Num: 40

Candidate Starts for Schism_10:

(Start: 40 @6592 has 13 MA's), (56, 6640), (88, 6814), (112, 6943), (116, 6967), (175, 7213), (208, 7321), (214, 7345), (227, 7393), (242, 7459),

Gene: Schnabeltier_6 Start: 5428, Stop: 6339, Start Num: 33

Candidate Starts for Schnabeltier_6:

(20, 5320), (Start: 33 @5428 has 4 MA's), (Start: 45 @5446 has 11 MA's), (89, 5695), (110, 5794), (118, 5836), (120, 5845), (137, 5905), (241, 6271), (245, 6283),

Gene: Sekhmet_7 Start: 5345, Stop: 6268, Start Num: 42

Candidate Starts for Sekhmet_7:

(Start: 42 @5345 has 146 MA's), (63, 5429), (74, 5477), (118, 5732), (121, 5750), (157, 5897), (158, 5900), (162, 5912), (181, 5984), (194, 6017), (214, 6092), (223, 6125), (238, 6191), (244, 6212), (254, 6257),

Gene: Shade_9 Start: 7556, Stop: 8443, Start Num: 39

Candidate Starts for Shade_9:

(Start: 39 @7556 has 48 MA's), (96, 7838), (104, 7874), (111, 7910), (115, 7934), (132, 8003), (136, 8018), (152, 8072), (154, 8087), (167, 8141), (207, 8243), (220, 8291), (244, 8387),

Gene: Shipwreck_6 Start: 5282, Stop: 6226, Start Num: 42

Candidate Starts for Shipwreck_6:

(Start: 42 @5282 has 146 MA's), (55, 5327), (63, 5366), (89, 5528), (106, 5603), (111, 5630), (116, 5657), (119, 5672), (121, 5687), (142, 5762), (146, 5783), (163, 5855), (173, 5888), (176, 5897), (190, 5960), (212, 6041), (229, 6104), (232, 6119), (246, 6176), (247, 6179), (254, 6215),

Gene: Shlim410_6 Start: 4904, Stop: 5836, Start Num: 42

Candidate Starts for Shlim410_6:

(Start: 42 @4904 has 146 MA's), (51, 4928), (59, 4967), (60, 4970), (68, 5012), (81, 5075), (102, 5210), (107, 5228), (112, 5255), (129, 5339), (130, 5348), (146, 5411), (162, 5468), (167, 5486), (176, 5513), (179, 5537), (183, 5552), (192, 5582), (200, 5612), (211, 5651), (244, 5783), (247, 5792),

Gene: Shynx_16 Start: 11920, Stop: 12900, Start Num: 45

Candidate Starts for Shynx_16:

(Start: 45 @11920 has 11 MA's), (Start: 48 @11926 has 1 MA's), (52, 11944), (67, 12019), (72, 12037), (73, 12040), (87, 12130), (88, 12136), (94, 12184), (100, 12202), (112, 12265), (113, 12277), (114, 12280), (121, 12319), (170, 12535), (171, 12538), (179, 12577), (239, 12802), (242, 12811), (251, 12850),

Gene: Sicarius2_10 Start: 8104, Stop: 8994, Start Num: 39

Candidate Starts for Sicarius2_10:

(Start: 39 @8104 has 48 MA's), (62, 8188), (89, 8356), (96, 8386), (104, 8422), (115, 8482), (132, 8551), (152, 8620), (167, 8689), (199, 8779), (220, 8839), (222, 8848), (238, 8914), (244, 8935),

Gene: Sidious_6 Start: 4898, Stop: 5827, Start Num: 42

Candidate Starts for Sidious_6:

(Start: 42 @4898 has 146 MA's), (60, 4961), (68, 5003), (81, 5066), (102, 5201), (107, 5219), (129, 5330), (166, 5474), (176, 5504), (197, 5588), (200, 5603), (211, 5642), (226, 5702), (244, 5774), (247, 5783),

Gene: SoilAssassin_6 Start: 4854, Stop: 5777, Start Num: 42

Candidate Starts for SoilAssassin_6:

(Start: 42 @4854 has 146 MA's), (63, 4938), (74, 4986), (96, 5130), (116, 5229), (118, 5241), (158, 5409), (181, 5493), (188, 5514), (194, 5526), (203, 5565), (214, 5601), (223, 5634), (244, 5721),

Gene: Soilmate_6 Start: 5043, Stop: 5972, Start Num: 42

Candidate Starts for Soilmate_6:

(Start: 42 @5043 has 146 MA's), (51, 5064), (60, 5106), (72, 5163), (81, 5211), (89, 5286), (96, 5316), (102, 5346), (107, 5364), (112, 5391), (113, 5403), (117, 5424), (129, 5475), (140, 5511), (162, 5604), (166, 5619), (176, 5649), (197, 5733), (210, 5784), (214, 5802), (244, 5919), (247, 5928),

Gene: Sonah_6 Start: 5299, Stop: 6243, Start Num: 42

Candidate Starts for Sonah_6:

(Start: 42 @5299 has 146 MA's), (54, 5332), (63, 5383), (89, 5545), (106, 5620), (111, 5647), (116, 5674), (119, 5689), (121, 5704), (146, 5800), (157, 5854), (163, 5872), (173, 5905), (190, 5977), (212, 6058), (218, 6085), (229, 6121), (232, 6136), (244, 6187), (246, 6193), (254, 6232),

Gene: Sonny_9 Start: 7577, Stop: 8464, Start Num: 39

Candidate Starts for Sonny_9:

(Start: 39 @7577 has 48 MA's), (96, 7859), (104, 7895), (111, 7931), (115, 7955), (132, 8024), (136, 8039), (152, 8093), (154, 8108), (167, 8162), (207, 8264), (220, 8312), (244, 8408),

Gene: Spartan_6 Start: 4859, Stop: 5815, Start Num: 32

Candidate Starts for Spartan_6:

(26, 4787), (29, 4844), (31, 4850), (32, 4859), (Start: 48 @4892 has 1 MA's), (59, 4943), (80, 5045), (89, 5123), (91, 5132), (107, 5201), (117, 5261), (118, 5264), (129, 5312), (130, 5321), (133, 5333), (144, 5372), (148, 5390), (160, 5432), (167, 5459), (177, 5501), (197, 5570), (247, 5768), (253, 5798), (254, 5804),

Gene: Sprinklemunch_6 Start: 5432, Stop: 6364, Start Num: 44

Candidate Starts for Sprinklemunch_6:

(Start: 44 @5432 has 53 MA's), (51, 5447), (65, 5519), (89, 5669), (102, 5729), (104, 5735), (107, 5747), (108, 5750), (113, 5786), (129, 5858), (131, 5873), (167, 6008), (176, 6035), (179, 6059), (200, 6134), (245, 6308), (255, 6353),

Gene: Sproutie_6 Start: 4854, Stop: 5777, Start Num: 42

Candidate Starts for Sproutie_6:

(Start: 42 @4854 has 146 MA's), (63, 4938), (74, 4986), (96, 5130), (116, 5229), (118, 5241), (158, 5409), (181, 5493), (188, 5514), (194, 5526), (203, 5565), (214, 5601), (223, 5634), (244, 5721),

Gene: StAB_6 Start: 5123, Stop: 6055, Start Num: 47

Candidate Starts for StAB_6:

(31, 5090), (Start: 47 @5123 has 8 MA's), (89, 5360), (94, 5384), (101, 5414), (104, 5426), (111, 5462), (112, 5465), (117, 5498), (160, 5669), (166, 5696), (177, 5741), (192, 5795), (204, 5843), (224, 5915), (233, 5951), (234, 5963), (235, 5966), (240, 5987), (249, 6026), (254, 6044),

Gene: StevieBAY_9 Start: 7550, Stop: 8437, Start Num: 39

Candidate Starts for StevieBAY_9:

(Start: 39 @7550 has 48 MA's), (81, 7718), (96, 7832), (104, 7868), (115, 7928), (132, 7997), (157, 8102), (168, 8138), (198, 8219), (207, 8237), (220, 8285), (238, 8360), (244, 8381),

Gene: StevieRay_6 Start: 5285, Stop: 6229, Start Num: 42

Candidate Starts for StevieRay_6:

(Start: 42 @5285 has 146 MA's), (55, 5330), (63, 5369), (89, 5531), (106, 5606), (111, 5633), (116, 5660), (119, 5675), (121, 5690), (142, 5765), (146, 5786), (163, 5858), (173, 5891), (176, 5900), (190, 5963), (212, 6044), (213, 6047), (218, 6071), (229, 6107), (232, 6122), (244, 6173), (246, 6179), (247, 6182), (254, 6218),

Gene: Stiles_6 Start: 5123, Stop: 6055, Start Num: 47

Candidate Starts for Stiles_6:

(31, 5090), (Start: 47 @5123 has 8 MA's), (89, 5360), (94, 5384), (101, 5414), (104, 5426), (111, 5462), (112, 5465), (117, 5498), (160, 5669), (166, 5696), (177, 5741), (192, 5795), (204, 5843), (224, 5915), (233, 5951), (234, 5963), (235, 5966), (240, 5987), (249, 6026), (254, 6044),

Gene: StressBall_6 Start: 5281, Stop: 6225, Start Num: 42

Candidate Starts for StressBall_6:

(Start: 42 @5281 has 146 MA's), (55, 5326), (63, 5365), (89, 5527), (106, 5602), (111, 5629), (116, 5656), (119, 5671), (121, 5686), (142, 5761), (146, 5782), (163, 5854), (173, 5887), (176, 5896), (190, 5959), (212, 6040), (213, 6043), (218, 6067), (229, 6103), (232, 6118), (244, 6169), (246, 6175), (247, 6178), (254, 6214),

Gene: Stuff_15 Start: 11658, Stop: 12632, Start Num: 48

Candidate Starts for Stuff_15:

(Start: 45 @11652 has 11 MA's), (Start: 48 @11658 has 1 MA's), (52, 11676), (67, 11751), (72, 11769), (73, 11772), (87, 11862), (88, 11868), (94, 11916), (100, 11934), (112, 11997), (113, 12009), (114, 12012), (121, 12051), (170, 12267), (171, 12270), (179, 12309), (214, 12450), (239, 12534), (242, 12543), (251, 12582),

Gene: Suerte_6 Start: 4843, Stop: 5766, Start Num: 42

Candidate Starts for Suerte_6:

(Start: 42 @4843 has 146 MA's), (63, 4927), (74, 4975), (118, 5230), (121, 5248), (157, 5395), (162, 5410), (181, 5482), (194, 5515), (214, 5590), (223, 5623), (238, 5689), (244, 5710), (254, 5755),

Gene: SunnyJune_10 Start: 8382, Stop: 9266, Start Num: 39

Candidate Starts for SunnyJune_10:

(Start: 39 @8382 has 48 MA's), (75, 8514), (81, 8547), (86, 8598), (90, 8634), (104, 8697), (111, 8733), (207, 9066), (220, 9114), (230, 9150), (237, 9186), (244, 9210),

Gene: TaeYoung_9 Start: 7578, Stop: 8465, Start Num: 39

Candidate Starts for TaeYoung_9:

(Start: 39 @7578 has 48 MA's), (96, 7860), (104, 7896), (111, 7932), (115, 7956), (132, 8025), (136, 8040), (152, 8094), (154, 8109), (167, 8163), (207, 8265), (220, 8313), (244, 8409),

Gene: TaronosaurusRx_6 Start: 5435, Stop: 6346, Start Num: 33

Candidate Starts for TaronosaurusRx_6:

(Start: 33 @5435 has 4 MA's), (Start: 45 @5453 has 11 MA's), (89, 5702), (110, 5801), (118, 5843), (120, 5852), (137, 5912), (241, 6278), (245, 6290),

Gene: Techage_6 Start: 5302, Stop: 6246, Start Num: 42

Candidate Starts for Techage_6:

(Start: 42 @5302 has 146 MA's), (54, 5335), (63, 5386), (88, 5524), (89, 5548), (106, 5623), (111, 5650), (112, 5653), (116, 5677), (119, 5692), (121, 5707), (146, 5803), (157, 5857), (163, 5875), (173, 5908), (190, 5980), (212, 6061), (218, 6088), (229, 6124), (232, 6139), (244, 6190), (246, 6196), (254, 6235),

Gene: Thespis_6 Start: 5281, Stop: 6225, Start Num: 42

Candidate Starts for Thespis_6:

(Start: 42 @5281 has 146 MA's), (55, 5326), (63, 5365), (89, 5527), (106, 5602), (111, 5629), (112, 5632), (116, 5656), (119, 5671), (121, 5686), (142, 5761), (146, 5782), (163, 5854), (173, 5887), (176, 5896), (190, 5959), (212, 6040), (213, 6043), (218, 6067), (229, 6103), (232, 6118), (244, 6169), (246, 6175), (247, 6178), (254, 6214),

Gene: Thimann_7 Start: 5345, Stop: 6268, Start Num: 42

Candidate Starts for Thimann_7:

(Start: 42 @5345 has 146 MA's), (63, 5429), (74, 5477), (118, 5732), (121, 5750), (157, 5897), (158, 5900), (162, 5912), (181, 5984), (194, 6017), (214, 6092), (223, 6125), (238, 6191), (244, 6212), (254, 6257),

Gene: ThulaThula_6 Start: 5313, Stop: 6269, Start Num: 42

Candidate Starts for ThulaThula_6:

(Start: 42 @5313 has 146 MA's), (55, 5358), (63, 5397), (64, 5400), (70, 5430), (88, 5535), (103, 5622), (106, 5634), (111, 5661), (116, 5688), (118, 5700), (121, 5718), (146, 5826), (157, 5880), (163, 5898), (173, 5931), (190, 6003), (212, 6084), (217, 6108), (218, 6111), (232, 6162), (244, 6213), (246, 6219), (254, 6258),

Gene: Timinator_9 Start: 7549, Stop: 8436, Start Num: 39

Candidate Starts for Timinator_9:

(Start: 39 @7549 has 48 MA's), (81, 7717), (96, 7831), (104, 7867), (115, 7927), (132, 7996), (157, 8101), (168, 8137), (198, 8218), (207, 8236), (220, 8284), (238, 8359), (244, 8380),

Gene: Toast_6 Start: 5209, Stop: 6138, Start Num: 44

Candidate Starts for Toast_6:

(Start: 44 @5209 has 53 MA's), (51, 5224), (63, 5284), (86, 5413), (101, 5500), (107, 5524), (129, 5635), (131, 5650), (166, 5782), (176, 5812), (198, 5899), (199, 5905), (200, 5911), (255, 6130),

Gene: ToastyOats_11 Start: 6906, Stop: 7817, Start Num: 43

Candidate Starts for ToastyOats_11:

(28, 6858), (Start: 43 @6906 has 14 MA's), (157, 7458), (225, 7677), (229, 7695), (244, 7761), (246, 7767),

Gene: Toodles_10 Start: 6635, Stop: 7546, Start Num: 43

Candidate Starts for Toodles_10:

(Start: 43 @6635 has 14 MA's), (105, 6953), (157, 7187), (229, 7424), (244, 7490), (246, 7496),

Gene: Tophat_12 Start: 9682, Stop: 10578, Start Num: 39

Candidate Starts for Tophat_12:

(Start: 39 @9682 has 48 MA's), (81, 9853), (86, 9907), (90, 9943), (108, 10021), (123, 10105), (149, 10204), (177, 10324), (222, 10441), (226, 10456), (244, 10528),

Gene: Tortellini_6 Start: 5252, Stop: 6196, Start Num: 42

Candidate Starts for Tortellini_6:

(8, 4994), (9, 5006), (12, 5102), (Start: 42 @5252 has 146 MA's), (54, 5285), (63, 5336), (70, 5369), (103, 5561), (111, 5600), (116, 5627), (118, 5639), (125, 5672), (142, 5732), (146, 5753), (157, 5807), (163, 5825), (167, 5840), (173, 5858), (181, 5903), (190, 5930), (202, 5978), (212, 6011), (217, 6035), (232, 6089), (244, 6140), (246, 6146), (254, 6185),

Gene: TouchMeNot_9 Start: 7329, Stop: 8234, Start Num: 35

Candidate Starts for TouchMeNot_9:

(Start: 35 @7329 has 5 MA's), (59, 7398), (71, 7455), (83, 7515), (85, 7533), (86, 7551), (109, 7680), (112, 7689), (117, 7722), (128, 7770), (166, 7914), (172, 7932), (192, 7989), (223, 8094), (229, 8112), (243, 8175),

Gene: Troy_6 Start: 5118, Stop: 6050, Start Num: 47

Candidate Starts for Troy_6:

(31, 5085), (Start: 47 @5118 has 8 MA's), (89, 5355), (94, 5379), (101, 5409), (104, 5421), (111, 5457), (112, 5460), (117, 5493), (160, 5664), (166, 5691), (177, 5736), (192, 5790), (204, 5838), (224, 5910), (233, 5946), (234, 5958), (235, 5961), (240, 5982), (249, 6021), (254, 6039),

Gene: TuertoX_6 Start: 4854, Stop: 5777, Start Num: 42

Candidate Starts for TuertoX_6:

(Start: 42 @4854 has 146 MA's), (63, 4938), (74, 4986), (96, 5130), (116, 5229), (118, 5241), (158, 5409), (181, 5493), (188, 5514), (194, 5526), (203, 5565), (214, 5601), (223, 5634), (244, 5721),

Gene: Tuti_7 Start: 5345, Stop: 6268, Start Num: 42

Candidate Starts for Tuti_7:

(Start: 42 @5345 has 146 MA's), (63, 5429), (74, 5477), (118, 5732), (121, 5750), (157, 5897), (162, 5912), (181, 5984), (194, 6017), (214, 6092), (223, 6125), (238, 6191), (244, 6212), (254, 6257),

Gene: Twinkle_6 Start: 4904, Stop: 5836, Start Num: 42

Candidate Starts for Twinkle_6:

(Start: 42 @4904 has 146 MA's), (51, 4928), (59, 4967), (60, 4970), (68, 5012), (81, 5075), (102, 5210), (107, 5228), (112, 5255), (129, 5339), (130, 5348), (146, 5411), (162, 5468), (167, 5486), (176, 5513), (179, 5537), (183, 5552), (192, 5582), (200, 5612), (211, 5651), (244, 5783), (247, 5792),

Gene: UNTPL_16 Start: 11770, Stop: 12738, Start Num: 45

Candidate Starts for UNTPL_16:

(Start: 45 @11770 has 11 MA's), (Start: 48 @11776 has 1 MA's), (52, 11794), (67, 11869), (72, 11887), (73, 11890), (87, 11980), (88, 11986), (94, 12034), (100, 12052), (112, 12115), (113, 12127), (114, 12130), (121, 12169), (171, 12379), (175, 12391), (179, 12418), (180, 12427), (195, 12484), (201, 12508), (239, 12643), (242, 12652),

Gene: Ubuntu_9 Start: 6586, Stop: 7542, Start Num: 42

Candidate Starts for Ubuntu_9:

(Start: 42 @6586 has 146 MA's), (59, 6646), (67, 6688), (68, 6691), (89, 6829), (100, 6871), (104, 6895), (107, 6907), (113, 6946), (114, 6949), (115, 6955), (125, 7003), (129, 7018), (141, 7063), (167, 7180), (172, 7195), (176, 7207), (178, 7225), (186, 7255), (197, 7297), (198, 7300), (200, 7312), (212, 7354), (222, 7396), (255, 7531),

Gene: UmaThurman_6 Start: 5209, Stop: 6138, Start Num: 44

Candidate Starts for UmaThurman_6:

(Start: 44 @5209 has 53 MA's), (51, 5224), (56, 5248), (63, 5284), (68, 5308), (86, 5413), (107, 5524), (112, 5551), (130, 5644), (131, 5650), (166, 5782), (176, 5812), (179, 5836), (183, 5851), (198, 5899), (200, 5911), (255, 6130),

Gene: Utz_6 Start: 5209, Stop: 6138, Start Num: 44

Candidate Starts for Utz_6:

(Start: 44 @5209 has 53 MA's), (51, 5224), (56, 5248), (63, 5284), (68, 5308), (89, 5446), (107, 5524), (112, 5551), (130, 5644), (131, 5650), (166, 5782), (176, 5812), (179, 5836), (183, 5851), (198, 5899), (200, 5911), (255, 6130),

Gene: Vasanti_6 Start: 4855, Stop: 5778, Start Num: 42

Candidate Starts for Vasanti_6:

(Start: 42 @4855 has 146 MA's), (63, 4939), (96, 5131), (116, 5230), (118, 5242), (158, 5410), (181, 5494), (188, 5515), (194, 5527), (214, 5602), (223, 5635), (244, 5722),

Gene: Venti_6 Start: 5294, Stop: 6238, Start Num: 42

Candidate Starts for Venti_6:

(Start: 42 @5294 has 146 MA's), (55, 5339), (63, 5378), (89, 5540), (106, 5615), (111, 5642), (116, 5669), (119, 5684), (121, 5699), (142, 5774), (146, 5795), (163, 5867), (173, 5900), (176, 5909), (190, 5972), (212, 6053), (213, 6056), (218, 6080), (229, 6116), (232, 6131), (244, 6182), (246, 6188), (247, 6191), (254, 6227),

Gene: Vibaki_10 Start: 9201, Stop: 10082, Start Num: 39

Candidate Starts for Vibaki_10:

(Start: 39 @9201 has 48 MA's), (86, 9414), (89, 9447), (104, 9513), (111, 9549), (132, 9642), (207, 9882), (222, 9939), (231, 9972), (244, 10026),

Gene: Vidya_6 Start: 5294, Stop: 6238, Start Num: 42

Candidate Starts for Vidya_6:

(Start: 42 @5294 has 146 MA's), (55, 5339), (63, 5378), (89, 5540), (106, 5615), (111, 5642), (116, 5669), (119, 5684), (121, 5699), (142, 5774), (146, 5795), (163, 5867), (173, 5900), (176, 5909), (190, 5972), (212, 6053), (213, 6056), (218, 6080), (229, 6116), (232, 6131), (244, 6182), (246, 6188), (247, 6191), (254, 6227),

Gene: Vitus_10 Start: 9008, Stop: 9892, Start Num: 39

Candidate Starts for Vitus_10:

(Start: 39 @9008 has 48 MA's), (57, 9062), (59, 9071), (81, 9173), (86, 9224), (89, 9257), (114, 9377), (128, 9443), (146, 9503), (172, 9605), (244, 9836),

Gene: Walrus_6 Start: 5044, Stop: 5973, Start Num: 42

Candidate Starts for Walrus_6:

(Start: 42 @5044 has 146 MA's), (51, 5065), (60, 5107), (72, 5164), (81, 5212), (89, 5287), (96, 5317), (102, 5347), (107, 5365), (112, 5392), (113, 5404), (117, 5425), (129, 5476), (140, 5512), (162, 5605), (166, 5620), (176, 5650), (183, 5689), (197, 5734), (200, 5749), (210, 5785), (214, 5803), (244, 5920), (247, 5929),

Gene: Webster2_9 Start: 6586, Stop: 7542, Start Num: 42

Candidate Starts for Webster2_9:

(Start: 42 @6586 has 146 MA's), (59, 6646), (67, 6688), (68, 6691), (89, 6829), (100, 6871), (104, 6895), (107, 6907), (113, 6946), (114, 6949), (115, 6955), (125, 7003), (129, 7018), (141, 7063), (167, 7180), (172, 7195), (176, 7207), (178, 7225), (186, 7255), (197, 7297), (198, 7300), (200, 7312), (212, 7354), (222, 7396), (255, 7531),

Gene: Weirido19_7 Start: 5454, Stop: 6380, Start Num: 50

Candidate Starts for Weirido19_7:

(Start: 43 @5439 has 14 MA's), (50, 5454), (51, 5457), (61, 5511), (63, 5517), (68, 5541), (89, 5679), (92, 5694), (96, 5709), (107, 5757), (113, 5796), (122, 5841), (129, 5868), (161, 5997), (166, 6021), (167, 6024), (174, 6045), (175, 6048), (193, 6123), (196, 6132), (222, 6234), (245, 6324), (255, 6369),

Gene: Whack_6 Start: 4913, Stop: 5842, Start Num: 42

Candidate Starts for Whack_6:

(Start: 42 @4913 has 146 MA's), (59, 4973), (60, 4976), (65, 5006), (68, 5018), (81, 5081), (107, 5234), (166, 5489), (171, 5504), (176, 5519), (197, 5603), (210, 5654), (244, 5789), (247, 5798),

Gene: WheatThin_10 Start: 6844, Stop: 7776, Start Num: 44

Candidate Starts for WheatThin_10:

(Start: 44 @6844 has 53 MA's), (51, 6859), (62, 6916), (63, 6919), (65, 6931), (89, 7081), (96, 7111), (104, 7147), (107, 7159), (113, 7198), (130, 7279), (176, 7447), (183, 7486), (209, 7579), (245, 7720), (255, 7765),

Gene: Whiteclaw_6 Start: 4854, Stop: 5777, Start Num: 42

Candidate Starts for Whiteclaw_6:

(Start: 42 @4854 has 146 MA's), (63, 4938), (74, 4986), (96, 5130), (116, 5229), (118, 5241), (158, 5409), (181, 5493), (188, 5514), (194, 5526), (203, 5565), (214, 5601), (223, 5634), (244, 5721),

Gene: William_6 Start: 5209, Stop: 6138, Start Num: 44

Candidate Starts for William_6:

(Start: 44 @5209 has 53 MA's), (51, 5224), (63, 5284), (86, 5413), (101, 5500), (107, 5524), (129, 5635), (131, 5650), (166, 5782), (176, 5812), (198, 5899), (200, 5911), (255, 6130),

Gene: Willsammy_6 Start: 5284, Stop: 6228, Start Num: 42

Candidate Starts for Willsammy_6:

(Start: 42 @5284 has 146 MA's), (55, 5329), (63, 5368), (89, 5530), (106, 5605), (111, 5632), (112, 5635), (116, 5659), (119, 5674), (121, 5689), (142, 5764), (146, 5785), (163, 5857), (173, 5890), (176, 5899), (190, 5962), (212, 6043), (218, 6070), (229, 6106), (232, 6121), (244, 6172), (246, 6178), (247, 6181), (254, 6217),

Gene: WinkNick_7 Start: 5345, Stop: 6268, Start Num: 42

Candidate Starts for WinkNick_7:

(Start: 42 @5345 has 146 MA's), (63, 5429), (74, 5477), (118, 5732), (121, 5750), (157, 5897), (158, 5900), (162, 5912), (181, 5984), (194, 6017), (214, 6092), (223, 6125), (238, 6191), (244, 6212), (254, 6257),

Gene: Wishmaker_9 Start: 6586, Stop: 7542, Start Num: 42

Candidate Starts for Wishmaker_9:

(Start: 42 @6586 has 146 MA's), (59, 6646), (67, 6688), (68, 6691), (89, 6829), (100, 6871), (104, 6895), (107, 6907), (113, 6946), (114, 6949), (115, 6955), (125, 7003), (129, 7018), (141, 7063), (167, 7180), (172, 7195), (176, 7207), (178, 7225), (186, 7255), (197, 7297), (198, 7300), (200, 7312), (212, 7354), (222, 7396), (255, 7531),

Gene: Wisp_6 Start: 5209, Stop: 6138, Start Num: 44

Candidate Starts for Wisp_6:

(Start: 44 @5209 has 53 MA's), (51, 5224), (56, 5248), (63, 5284), (68, 5308), (86, 5413), (89, 5446), (107, 5524), (112, 5551), (130, 5644), (131, 5650), (166, 5782), (176, 5812), (179, 5836), (183, 5851), (198, 5899), (200, 5911), (255, 6130),

Gene: Wocket_6 Start: 5200, Stop: 6132, Start Num: 44

Candidate Starts for Wocket_6:

(24, 5110), (Start: 44 @5200 has 53 MA's), (51, 5215), (56, 5239), (63, 5275), (68, 5299), (86, 5404), (107, 5515), (112, 5542), (129, 5626), (130, 5635), (165, 5770), (176, 5803), (179, 5827), (198, 5890), (200, 5902), (255, 6121),

Gene: Wyborn_10 Start: 7965, Stop: 8855, Start Num: 39

Candidate Starts for Wyborn_10:

(Start: 39 @7965 has 48 MA's), (62, 8049), (89, 8217), (96, 8247), (104, 8283), (115, 8343), (132, 8412), (152, 8481), (157, 8517), (167, 8550), (199, 8640), (220, 8700), (222, 8709), (232, 8745), (238, 8775), (244, 8796),

Gene: Xavia_6 Start: 5296, Stop: 6240, Start Num: 42

Candidate Starts for Xavia_6:

(Start: 42 @5296 has 146 MA's), (55, 5341), (63, 5380), (89, 5542), (106, 5617), (111, 5644), (116, 5671), (119, 5686), (121, 5701), (142, 5776), (146, 5797), (163, 5869), (173, 5902), (176, 5911), (190, 5974), (212, 6055), (213, 6058), (218, 6082), (229, 6118), (232, 6133), (244, 6184), (246, 6190), (247, 6193), (254, 6229),

Gene: Yeet412_6 Start: 4854, Stop: 5777, Start Num: 42

Candidate Starts for Yeet412_6:

(Start: 42 @4854 has 146 MA's), (63, 4938), (74, 4986), (96, 5130), (116, 5229), (118, 5241), (158, 5409), (181, 5493), (188, 5514), (194, 5526), (203, 5565), (214, 5601), (223, 5634), (244, 5721),

Gene: Yeezy_6 Start: 4895, Stop: 5824, Start Num: 42

Candidate Starts for Yeezy_6:

(Start: 42 @4895 has 146 MA's), (60, 4958), (68, 5000), (89, 5138), (102, 5198), (107, 5216), (129, 5327), (166, 5471), (176, 5501), (197, 5585), (200, 5600), (226, 5699), (244, 5771), (247, 5780),

Gene: Yinzer_6 Start: 4854, Stop: 5777, Start Num: 42

Candidate Starts for Yinzer_6:

(Start: 42 @4854 has 146 MA's), (63, 4938), (74, 4986), (96, 5130), (116, 5229), (118, 5241), (158, 5409), (181, 5493), (188, 5514), (194, 5526), (203, 5565), (214, 5601), (223, 5634), (244, 5721),

Gene: Yonex_10 Start: 6702, Stop: 7631, Start Num: 40

Candidate Starts for Yonex_10:

(Start: 40 @6702 has 13 MA's), (88, 6924), (104, 7014), (116, 7077), (208, 7431), (214, 7455), (242, 7569),

Gene: ZAYM_6 Start: 5428, Stop: 6339, Start Num: 33

Candidate Starts for ZAYM_6:

(Start: 33 @5428 has 4 MA's), (Start: 45 @5446 has 11 MA's), (89, 5695), (110, 5794), (118, 5836), (120, 5845), (137, 5905), (241, 6271), (245, 6283),

Gene: Zaheer_10 Start: 6791, Stop: 7720, Start Num: 40

Candidate Starts for Zaheer_10:

(Start: 40 @6791 has 13 MA's), (88, 7013), (104, 7103), (116, 7166), (208, 7520), (214, 7544), (242, 7658),

Gene: Zarbodnamra_6 Start: 5208, Stop: 6137, Start Num: 44

Candidate Starts for Zarbodnamra_6:

(Start: 44 @5208 has 53 MA's), (51, 5223), (56, 5247), (63, 5283), (68, 5307), (86, 5412), (89, 5445), (107, 5523), (112, 5550), (130, 5643), (131, 5649), (166, 5781), (176, 5811), (179, 5835), (183, 5850), (198, 5898), (200, 5910), (255, 6129),

Gene: Zartrosa_9 Start: 7577, Stop: 8464, Start Num: 39

Candidate Starts for Zartrosa_9:

(Start: 39 @7577 has 48 MA's), (96, 7859), (111, 7931), (115, 7955), (132, 8024), (136, 8039), (152, 8093), (154, 8108), (167, 8162), (207, 8264), (220, 8312), (244, 8408),

Gene: ZiggyZoo_6 Start: 5233, Stop: 6162, Start Num: 44

Candidate Starts for ZiggyZoo_6:

(Start: 44 @5233 has 53 MA's), (51, 5248), (56, 5272), (63, 5308), (68, 5332), (89, 5470), (107, 5548), (112, 5575), (130, 5668), (131, 5674), (166, 5806), (176, 5836), (179, 5860), (183, 5875), (198, 5923), (200, 5935), (255, 6154),

Gene: Zilizebeth_6 Start: 5294, Stop: 6238, Start Num: 42

Candidate Starts for Zilizebeth_6:

(Start: 42 @5294 has 146 MA's), (55, 5339), (63, 5378), (89, 5540), (106, 5615), (111, 5642), (116, 5669), (119, 5684), (121, 5699), (142, 5774), (146, 5795), (163, 5867), (173, 5900), (176, 5909), (190, 5972), (212, 6053), (213, 6056), (218, 6080), (229, 6116), (232, 6131), (244, 6182), (246, 6188), (247, 6191), (254, 6227),

Gene: Zilla_6 Start: 5202, Stop: 6134, Start Num: 44

Candidate Starts for Zilla_6:

(Start: 44 @5202 has 53 MA's), (51, 5217), (63, 5277), (86, 5406), (89, 5439), (107, 5517), (112, 5544), (115, 5565), (129, 5628), (130, 5637), (131, 5643), (166, 5775), (176, 5805), (179, 5829), (183, 5844), (197, 5889), (198, 5892), (200, 5904), (255, 6123),

Gene: Zodiariah_6 Start: 5418, Stop: 6350, Start Num: 44

Candidate Starts for Zodiariah_6:

(1, 4716), (2, 4773), (3, 4899), (Start: 44 @5418 has 53 MA's), (51, 5433), (65, 5505), (89, 5655), (104, 5721), (107, 5733), (113, 5772), (129, 5844), (167, 5994), (176, 6021), (179, 6045), (198, 6108), (200, 6120), (206, 6144), (245, 6294), (255, 6339),