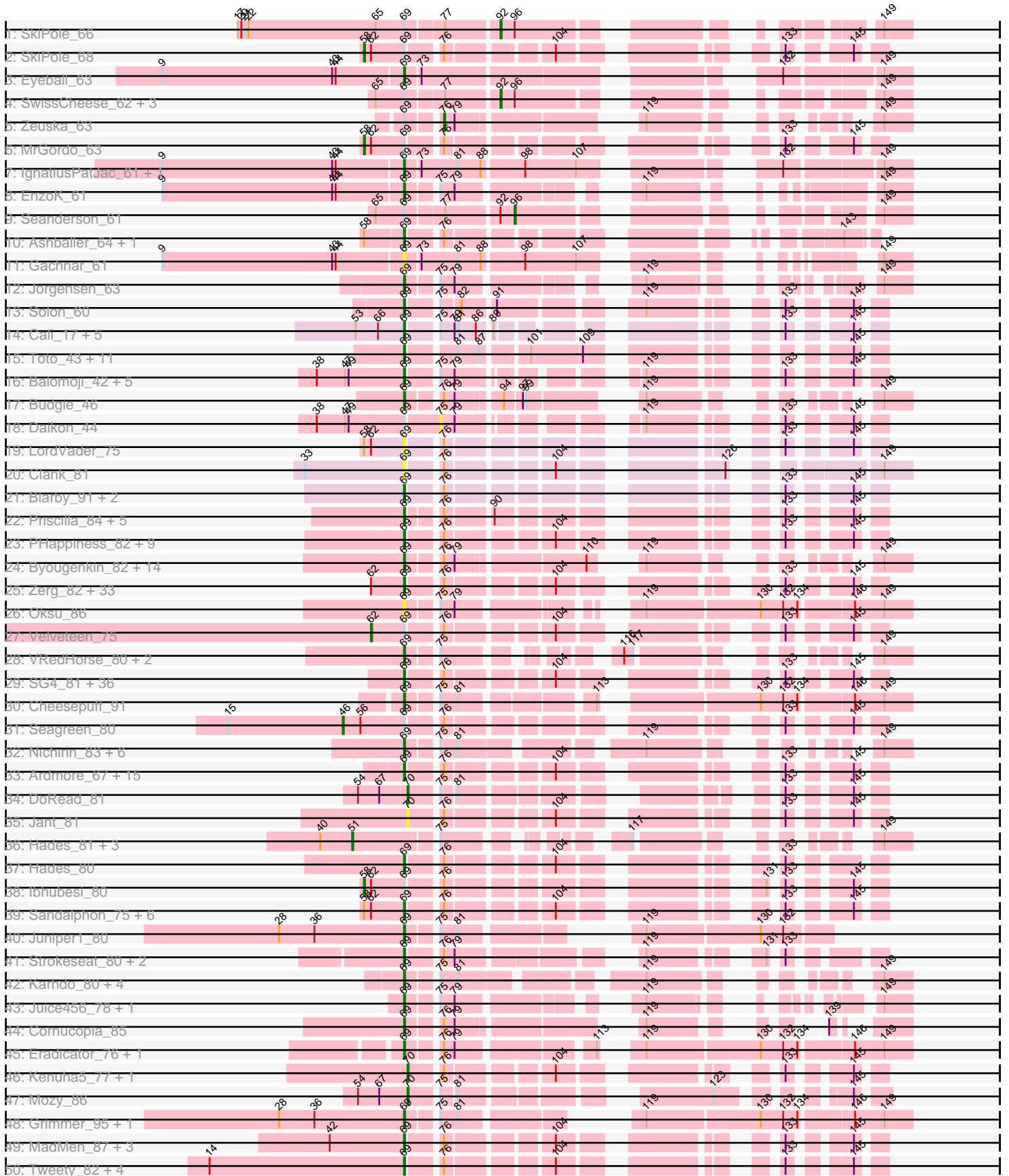
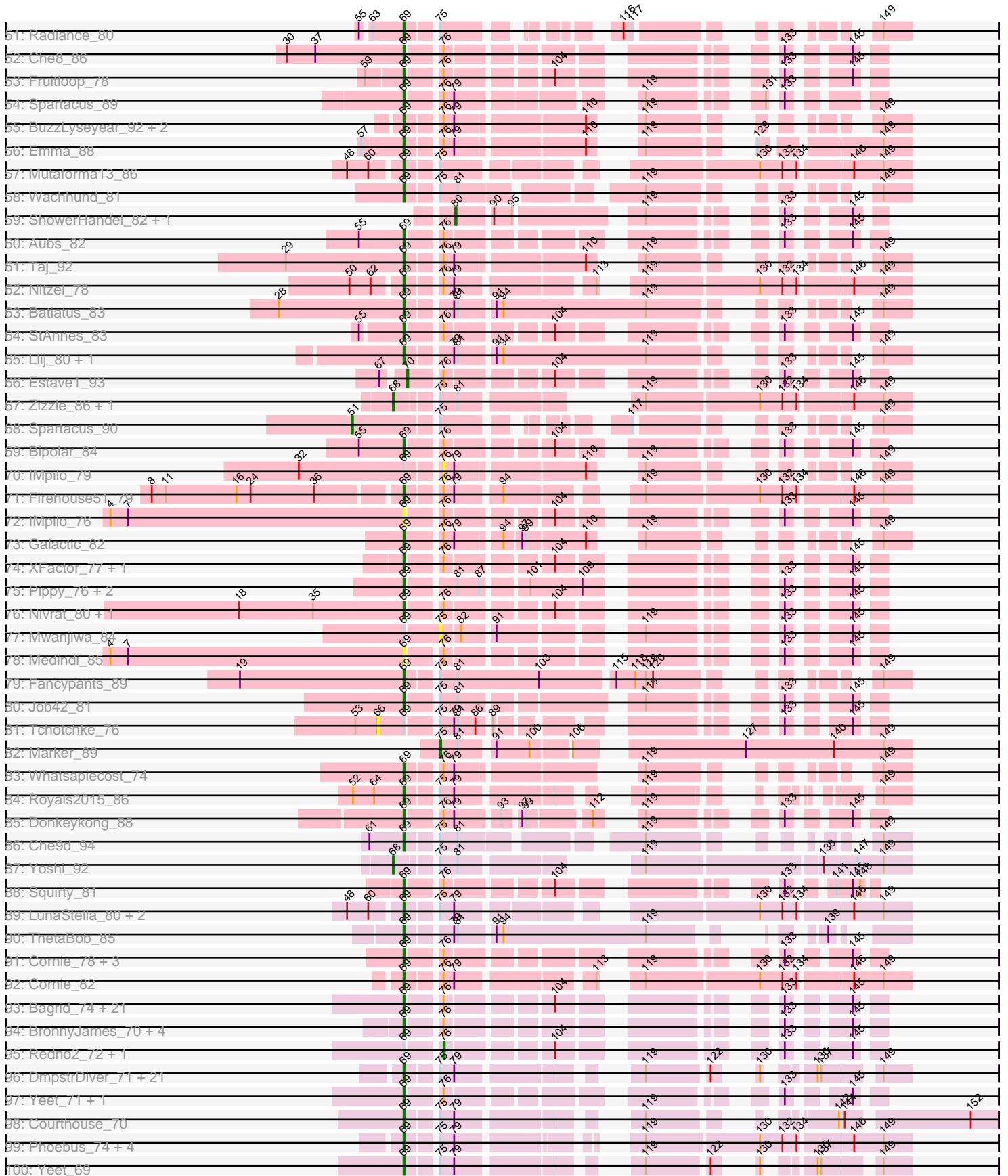


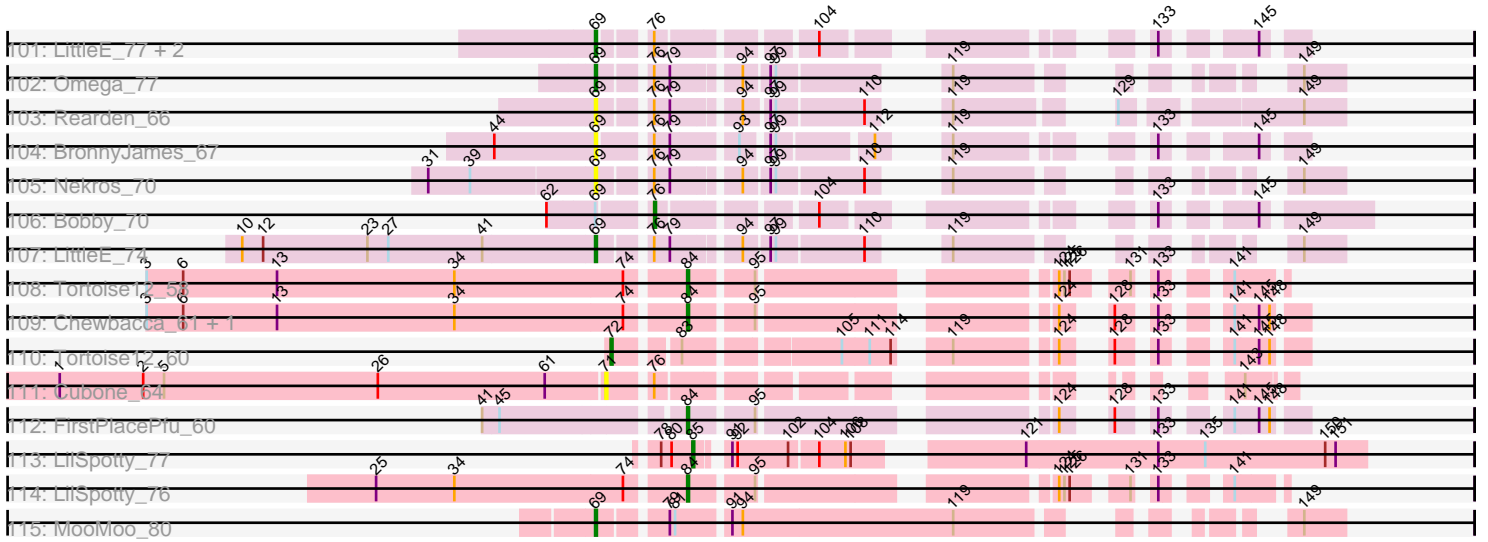
Pham 303001



Pham 303001



Pham 303001



Note: Tracks are now grouped by subcluster and scaled. Switching in subcluster is indicated by changes in track color. Track scale is now set by default to display the region 30 bp upstream of start 1 to 30 bp downstream of the last possible start. If this default region is judged to be packed too tightly with annotated starts, the track will be further scaled to only show that region of the ORF with annotated starts. This action will be indicated by adding "Zoomed" to the title. For starts, yellow indicates the location of called starts comprised solely of Glimmer/GeneMark auto-annotations, green indicates the location of called starts with at least 1 manual gene annotation.

Pham 303001 Report

This analysis was run 06/08/26 on database version 649.

Pham number 303001 has 358 members, 35 are drafts.

Phages represented in each track:

- Track 1 : SkiPole_66
- Track 2 : SkiPole_68
- Track 3 : Eyeball_63
- Track 4 : SwissCheese_62, Moose_60, Bruns_60, Forsytheast_60
- Track 5 : Zeuska_63
- Track 6 : MrGordo_63
- Track 7 : IgnatiusPatJac_61, BluSpix_59
- Track 8 : EnzoK_61
- Track 9 : Seanderson_61
- Track 10 : Ashballer_64, JC27_64
- Track 11 : Gachnar_61
- Track 12 : Jorgensen_63
- Track 13 : Solon_60
- Track 14 : Cali_17, SuperGrey_82, Eradicator_72, KashFlow_68, Sprinklers_16, BadAgartude_17
- Track 15 : Toto_43, BilboSwaggins_43, Myrale_44, Tuco_45, IHOP_42, Marshmallow_43, ABCat_42, Inca_41, Phaja_42, CrystalP_44, ShamWow_44, StellaBean_42
- Track 16 : Balomoji_42, Flypotenuse_38, Traaww1_40, Gator_41, Harella_43, Glexan_41
- Track 17 : Budgie_46
- Track 18 : Daikon_44
- Track 19 : LordVader_75
- Track 20 : Clank_81
- Track 21 : Blarby_91, Jabbawokkie_91, Zapner_90
- Track 22 : Priscilla_84, Spartacus_87, Wanda_77, Koella_76, Klein_73, NormanBulbieJr_82
- Track 23 : PHappiness_82, Leperchaun_80, Nimbo_74, Geralt_75, JoeyJr_82, Daenerys_81, OldBen_79, RitaG_82, MilleniumForce_82, Deb65_75
- Track 24 : Byougenkin_82, PopTart_77, Wee_91, SassyB_77, Florinda_94, Royals2015_90, Tweety_86, Girafales_91, Phalconet_82, Eish_88, DeadP_86, PhesterPhotato_89, Medindi_89, Blexus_80, Quico_91
- Track 25 : Zerg_82, VRedHorse_86, FeliMaine_10, PopTart_73, OfUltron_89, Nichirin_81, BAKA_82, Guppsters_76, Beelzebub_12, SassyB_73, Sebastian_89, Ochi17_87, Mandlovu_76, Clarkson_10, Huphlepuuff_10, Lilbit_10, Marvin_8, Pringar_9, Duke13_80, Jinglebell_88, BigPhil_74, Minerva_79, JoieB_10, Strokeseat_76, Modragons_86, Llama_88, Brookers_76, Cerasum_75, LittleLaf_9,

Corazon_9, Sarma624_80, Pound_77, Hlubikazi_76, Coco12_78

- Track 26 : Oksu_86
- Track 27 : Velveteen_75
- Track 28 : VRedHorse_80, Cornucopia_81, Pacc40_73
- Track 29 : SG4_81, Burwell21_76, KristaRAM_79, Harley_80, Jarcob_81, Mova_80, Mozy_88, Clifton_74, OlympiaSaint_81, Lucia_80, Drago_78, Polo2Bam_89, Philus_84, SeaLumen_86, Rockne_82, Phatniss_78, Latretium_82, LunaBlu_84, Ms6_82, Flathead_81, Llij_77, Lorde_81, Eish_84, UncleRicky_80, NewHope4_84, Violac_83, James_82, Boomer_85, Enby_82, DirtMcgirt_80, Enzomatic_90, DRBy19_85, Ogopogo_87, Rita_88, Marker_87, PMC_78, Avani_90
- Track 30 : Cheesepuff_91
- Track 31 : Seagreen_80
- Track 32 : Nichirin_83, Seabastian_91, Modragons_88, Llama_90, Ochi17_89, OfUltron_91, Jinglebell_90
- Track 33 : Ardmore_67, Hamulus_80, Phanphagia_80, Batiatus_81, Poise_9, Filuzino_82, DotProduct_76, Tesla_9, Akhila_78, MilanaBonita_77, Shauna1_81, Raela_9, Blackbeetle_9, Okabe_77, Nekros_72, Manda_43
- Track 34 : DoRead_81
- Track 35 : Jant_81
- Track 36 : Hades_81, Strokeseat_81, Mandlovu_81, Hlubikazi_81
- Track 37 : Hades_80
- Track 38 : Ibhubesi_80
- Track 39 : Sandalphon_75, WillSterrel_80, Bubbles123_76, Minnie_77, Soul22_82, IrishSherpFalk_81, Pepe_59
- Track 40 : Juniper1_80
- Track 41 : Strokeseat_80, Mandlovu_80, Hlubikazi_80
- Track 42 : Karhdo_80, Renaud18_93, MadMen_79, Sabbb_83, Kersh_83
- Track 43 : Juice456_78, QuickMath_80
- Track 44 : Cornucopia_85
- Track 45 : Eradicator_76, Violac_87
- Track 46 : Kenuha5_77, Gandalph_79
- Track 47 : Mozy_86
- Track 48 : Grimmer_95, Mahavrat_81
- Track 49 : MadMen_87, Nibley_65, Galactic_80, Kumao_59
- Track 50 : Tweety_82, Wee_87, DeadP_82, Taj_88, Donkeykong_86
- Track 51 : Radiance_80
- Track 52 : Che8_86
- Track 53 : Fruitloop_78
- Track 54 : Spartacus_89
- Track 55 : BuzzLyseyear_92, Krakatau_77, Job42_84
- Track 56 : Emma_88
- Track 57 : Mutaforma13_86
- Track 58 : Wachhund_81
- Track 59 : ShowerHandel_82, ByChance_73
- Track 60 : Aubs_82
- Track 61 : Taj_92
- Track 62 : Nitzel_78
- Track 63 : Batiatus_83
- Track 64 : StAnnes_83
- Track 65 : Llij_80, Soul22_84
- Track 66 : Estave1_93
- Track 67 : Zizzle_86, EleanorGeorge_80
- Track 68 : Spartacus_90

- Track 69 : Bipolar_84
- Track 70 : IMpilo_79
- Track 71 : Firehouse51_79
- Track 72 : IMpilo_76
- Track 73 : Galactic_82
- Track 74 : XFactor_77, DLane_83
- Track 75 : Pippy_76, Blexus_76, Leozinho_79
- Track 76 : Nivrat_80, LilMoolah_82
- Track 77 : Mwanjiwa_84
- Track 78 : Medindi_85
- Track 79 : Fancypants_89
- Track 80 : Job42_81
- Track 81 : Tchotchke_76
- Track 82 : Marker_89
- Track 83 : Whatsapiecost_74
- Track 84 : Royals2015_86
- Track 85 : Donkeykong_88
- Track 86 : Che9d_94
- Track 87 : Yoshi_92
- Track 88 : Squirty_81
- Track 89 : LunaStella_80, TChen_82, ShroomBoi_82
- Track 90 : ThetaBob_85
- Track 91 : Cornie_78, CaptainTrips_81, MinionDave_77, Rearden_68
- Track 92 : Cornie_82
- Track 93 : Bagrid_74, DmpstrDiver_75, ThreeRngTarjay_73, Kalah2_70, Phoebus_78, Dallas_74, Odette_74, Halley_77, Zelink_73, Ejimix_75, Squint_76, JuicyJay_74, EricMillard_74, HokkenD_68, Porcelain_75, Hughesyang_74, Superphikiman_73, Beem_75, NihilNomen_76, MiaZeal_76, Schatzie_70, Ariel_75
- Track 94 : BronnyJames_70, Phalconet_78, Shaboozey_69, Hannaconda_70, Kingsley_85
- Track 95 : Redno2_72, Lucky2013_73
- Track 96 : DmpstrDiver_71, Schatzie_66, Dallas_70, Odette_70, Klein_71, Lucky2013_69, Superphikiman_69, Halley_73, Zelink_69, Kalah2_66, Ejimix_71, JuicyJay_70, Marleymoo_65, Minerva_77, HokkenD_64, Hughesyang_70, Redno2_68, Wanda_75, Beem_71, NihilNomen_72, ThreeRngTarjay_69, Pound_75
- Track 97 : Yeet_71, Courthouse_72
- Track 98 : Courthouse_70
- Track 99 : Phoebus_74, Squint_72, Porcelain_71, MiaZeal_72, Ariel_71
- Track 100 : Yeet_69
- Track 101 : LittleE_77, Omega_79, PhesterPhotato_85
- Track 102 : Omega_77
- Track 103 : Rearden_66
- Track 104 : BronnyJames_67
- Track 105 : Nekros_70
- Track 106 : Bobby_70
- Track 107 : LittleE_74
- Track 108 : Tortoise12_58
- Track 109 : Chewbacca_61, ZenTime222_56
- Track 110 : Tortoise12_60
- Track 111 : Cubone_64
- Track 112 : FirstPlacePfu_60
- Track 113 : LilSpotty_77
- Track 114 : LilSpotty_76

- Track 115 : MooMoo_80

Summary of Final Annotations (See graph section above for start numbers):

The start number called the most often in the published annotations is 69, it was called in 285 of the 323 non-draft genes in the pham.

Genes that call this "Most Annotated" start:

- ABCat_42, Akhila_78, Ardmore_67, Ariel_71, Ariel_75, Ashballer_64, Aubs_82, Avani_90, BAKA_82, BadAgartude_17, Bagrid_74, Balomoji_42, Batiatus_81, Batiatus_83, Beelzebub_12, Beem_71, Beem_75, BigPhil_74, BilboSwaggins_43, Bipolar_84, Blackbeetle_9, Blarby_91, Blexus_76, Blexus_80, BluSpix_59, Boomer_85, BronnyJames_67, BronnyJames_70, Brookers_76, Bubbles123_76, Budgie_46, Burwell21_76, BuzzLyseyear_92, Byougenkin_82, Cali_17, CaptainTrips_81, Cerasum_75, Che8_86, Che9d_94, CheesePuff_91, Clank_81, Clarkson_10, Clifton_74, Coco12_78, Corazon_9, Cornie_78, Cornie_82, Cornucopia_81, Cornucopia_85, Courthouse_70, Courthouse_72, CrystalP_44, DLane_83, DRBy19_85, Daenerys_81, Dallas_70, Dallas_74, DeadP_82, DeadP_86, Deb65_75, DirtMcGirt_80, DmpstrDiver_71, DmpstrDiver_75, Donkeykong_86, Donkeykong_88, DotProduct_76, Drago_78, Duke13_80, Eish_84, Eish_88, Ejimix_71, Ejimix_75, Emma_88, Enby_82, EnzoK_61, Enzomatic_90, Eradicator_72, Eradicator_76, EricMillard_74, Eyeball_63, Fancypants_89, FeliMaine_10, Filuzino_82, Firehouse51_79, Flathead_81, Florinda_94, Flypotenuse_38, Fruitloop_78, Gachnar_61, Galactic_80, Galactic_82, Gator_41, Geralt_75, Girafales_91, Glexan_41, Grimmer_95, Guppsters_76, Hades_80, Halley_73, Halley_77, Hamulus_80, Hannaconda_70, Harella_43, Harley_80, Hlubikazi_76, Hlubikazi_80, HokkenD_64, HokkenD_68, Hughesyang_70, Hughesyang_74, HuphlePuff_10, IHOP_42, IMpilo_76, IgnatiusPatJac_61, Inca_41, IrishSherpFalk_81, JC27_64, Jabbawokkie_91, James_82, Jarcob_81, Jinglebell_88, Jinglebell_90, Job42_81, Job42_84, JoeyJr_82, JoieB_10, Jorgensen_63, Juice456_78, JuicyJay_70, JuicyJay_74, Juniper1_80, Kalah2_66, Kalah2_70, Karhdo_80, KashFlow_68, Kersh_83, Kingsley_85, Klein_71, Klein_73, Koella_76, Krakatau_77, KristaRAM_79, Kumao_59, Latretium_82, Leozinho_79, Leperchaun_80, LilMoolah_82, Lilbit_10, LittleE_74, LittleE_77, LittleLaf_9, Llama_88, Llama_90, Llij_77, Llij_80, LordVader_75, Lorde_81, Lucia_80, Lucky2013_69, LunaBlu_84, LunaStella_80, MadMen_79, MadMen_87, Mahavrat_81, Manda_43, Mandlovu_76, Mandlovu_80, Marker_87, Marleymoo_65, Marshmallow_43, Marvin_8, Medindi_85, Medindi_89, MiaZeal_72, MiaZeal_76, MilanaBonita_77, MilleniumForce_82, Minerva_77, Minerva_79, MinionDave_77, Minnie_77, Modragons_86, Modragons_88, MooMoo_80, Mova_80, Mozy_88, Ms6_82, Mutaforma13_86, Myrale_44, Nekros_70, Nekros_72, NewHope4_84, Nibley_65, Nichirin_81, Nichirin_83, NihilNomen_72, NihilNomen_76, Nimbo_74, Nitzel_78, Nivrat_80, NormanBulbieJr_82, Ochi17_87, Ochi17_89, Odette_70, Odette_74, OfUltron_89, OfUltron_91, Ogopogo_87, Okabe_77, Oksu_86, OldBen_79, OlympiaSaint_81, Omega_77, Omega_79, PHappiness_82, PMC_78, Pacc40_73, Pepe_59, Phaja_42, Phalconet_78, Phalconet_82, Phanphagia_80, Phatniss_78, PhesterPotato_85, PhesterPotato_89, Philus_84, Phoebus_74, Phoebus_78, Pippy_76, Poise_9, Polo2Bam_89, PopTart_73, PopTart_77, Porcelain_71, Porcelain_75, Pound_75, Pound_77, Pringar_9, Priscilla_84, QuickMath_80, Quico_91, Radiance_80, Raela_9, Rearden_66, Rearden_68, Redno2_68, Renaud18_93, RitaG_82, Rita_88,

Rockne_82, Royals2015_86, Royals2015_90, SG4_81, Sabbb_83, Sandalphon_75, Sarma624_80, SassyB_73, SassyB_77, Schatzie_66, Schatzie_70, SeaLumen_86, Seabastian_89, Seabastian_91, Shaboozey_69, ShamWow_44, Shauna1_81, ShroomBoi_82, Solon_60, Soul22_82, Soul22_84, Spartacus_87, Spartacus_89, Sprinklers_16, Squint_72, Squint_76, Squirty_81, StAnnes_83, StellaBean_42, Strokeseat_76, Strokeseat_80, SuperGrey_82, Superphikiman_69, Superphikiman_73, TChen_82, Taj_88, Taj_92, Tesla_9, ThetaBob_85, ThreeRngTarjay_69, ThreeRngTarjay_73, Toto_43, Traaww1_40, Tuco_45, Tweety_82, Tweety_86, UncleRicky_80, VRedHorse_80, VRedHorse_86, Violac_83, Violac_87, Wachhund_81, Wanda_75, Wanda_77, Wee_87, Wee_91, Whatsapiecost_74, WillSterrel_80, XFactor_77, Yeet_69, Yeet_71, Zapner_90, Zelink_69, Zelink_73, Zerg_82,

Genes that have the "Most Annotated" start but do not call it:

- Bobby_70, Bruns_60, Daikon_44, Forsytheast_60, IMpilo_79, Ibhubesi_80, Lucky2013_73, Moose_60, MrGordo_63, Mwanjiwa_84, Redno2_72, Seagreen_80, Seanderson_61, SkiPole_66, SkiPole_68, SwissCheese_62, Tchotchke_76, Velveteen_75, Zeuska_63,

Genes that do not have the "Most Annotated" start:

- ByChance_73, Chewbacca_61, Cubone_64, DoRead_81, EleanorGeorge_80, Estave1_93, FirstPlacePfu_60, Gandalph_79, Hades_81, Hlubikazi_81, Jant_81, Kenuha5_77, LilSpotty_76, LilSpotty_77, Mandlovu_81, Marker_89, Mozy_86, ShowerHandel_82, Spartacus_90, Strokeseat_81, Tortoise12_58, Tortoise12_60, Yoshi_92, ZenTime222_56, Zizzle_86,

Summary by start number:

Start 46:

- Found in 1 of 358 (0.3%) of genes in pham
- Manual Annotations of this start: 1 of 323
- Called 100.0% of time when present
- Phage (with cluster) where this start called: Seagreen_80 (F1),

Start 51:

- Found in 5 of 358 (1.4%) of genes in pham
- Manual Annotations of this start: 5 of 323
- Called 100.0% of time when present
- Phage (with cluster) where this start called: Hades_81 (F1), Hlubikazi_81 (F1), Mandlovu_81 (F1), Spartacus_90 (F1), Strokeseat_81 (F1),

Start 58:

- Found in 13 of 358 (3.6%) of genes in pham
- Manual Annotations of this start: 3 of 323
- Called 23.1% of time when present
- Phage (with cluster) where this start called: Ibhubesi_80 (F1), MrGordo_63 (A1), SkiPole_68 (A1),

Start 62:

- Found in 48 of 358 (13.4%) of genes in pham
- Manual Annotations of this start: 1 of 323
- Called 2.1% of time when present
- Phage (with cluster) where this start called: Velveteen_75 (F1),

Start 66:

- Found in 7 of 358 (2.0%) of genes in pham
- No Manual Annotations of this start.
- Called 14.3% of time when present
- Phage (with cluster) where this start called: Tchotchke_76 (F1),

Start 68:

- Found in 3 of 358 (0.8%) of genes in pham
- Manual Annotations of this start: 3 of 323
- Called 100.0% of time when present
- Phage (with cluster) where this start called: EleanorGeorge_80 (F1), Yoshi_92 (F2), Zizzle_86 (F1),

Start 69:

- Found in 333 of 358 (93.0%) of genes in pham
- Manual Annotations of this start: 285 of 323
- Called 94.3% of time when present
- Phage (with cluster) where this start called: ABCat_42 (E), Akhila_78 (F1), Ardmore_67 (F1), Ariel_71 (J), Ariel_75 (J), Ashballer_64 (A1), Aubs_82 (F1), Avani_90 (F2), BAKA_82 (J), BadAgartude_17 (C1), Bagrid_74 (J), Balomoji_42 (E), Batiatus_81 (F1), Batiatus_83 (F1), Beelzebub_12 (S), Beem_71 (J), Beem_75 (J), BigPhil_74 (F1), BilboSwaggins_43 (E), Bipolar_84 (F1), Blackbeetle_9 (S), Blarby_91 (F), Blexus_76 (F1), Blexus_80 (F1), BluSpix_59 (A1), Boomer_85 (F1), BronnyJames_67 (J), BronnyJames_70 (J), Brookers_76 (F1), Bubbles123_76 (F1), Budgie_46 (E), Burwell21_76 (F1), BuzzLyseyear_92 (F1), Byougenkin_82 (F1), Cali_17 (C1), CaptainTrips_81 (F1), Cerasum_75 (F1), Che8_86 (F1), Che9d_94 (F2), Cheesepuff_91 (F1), Clank_81 (F), Clarkson_10 (S), Clifton_74 (F1), Coco12_78 (F1), Corazon_9 (S), Cornie_78 (F5), Cornie_82 (F5), Cornucopia_81 (F1), Cornucopia_85 (F1), Courthouse_70 (J), Courthouse_72 (J), CrystalP_44 (E), DLane_83 (F1), DRBy19_85 (F1), Daenerys_81 (F1), Dallas_70 (J), Dallas_74 (J), DeadP_82 (F1), DeadP_86 (F1), Deb65_75 (F1), DirtMcgirt_80 (F1), DmpstrDiver_71 (J), DmpstrDiver_75 (J), Donkeykong_86 (F1), Donkeykong_88 (F1), DotProduct_76 (F1), Drago_78 (F1), Duke13_80 (J), Eish_84 (F1), Eish_88 (F1), Ejimix_71 (J), Ejimix_75 (J), Emma_88 (F1), Enby_82 (F1), EnzoK_61 (A1), Enzomatic_90 (F1), Eradicator_72 (F1), Eradicator_76 (F1), EricMillard_74 (J), Eyeball_63 (A1), Fancypants_89 (F1), FeliMaine_10 (S), Filuzino_82 (F1), Firehouse51_79 (F1), Flathead_81 (F1), Florinda_94 (F1), Flypotenuse_38 (E), Fruitloop_78 (F1), Gachnar_61 (A1), Galactic_80 (F1), Galactic_82 (F1), Gator_41 (E), Geralt_75 (F1), Girafales_91 (F1), Glexan_41 (E), Grimmer_95 (F1), Guppsters_76 (F1), Hades_80 (F1), Halley_73 (J), Halley_77 (J), Hamulus_80 (F1), Hannaconda_70 (J), Harella_43 (E), Harley_80 (F1), Hlubikazi_76 (F1), Hlubikazi_80 (F1), HokkenD_64 (J), HokkenD_68 (J), Hughesyang_70 (J), Hughesyang_74 (J), Huphlepuuff_10 (S), IHOP_42 (E), IMpilo_76 (F1), IgnatiusPatJac_61 (A1), Inca_41 (E), IrishSherpFalk_81 (F1), JC27_64 (A1), Jabbawokkie_91 (F2), James_82 (F1), Jarcob_81 (F1), Jinglebell_88 (F1), Jinglebell_90 (F1), Job42_81 (F1), Job42_84 (F1), JoeyJr_82 (F1), JoieB_10 (S), Jorgensen_63 (A1), Juice456_78 (F1), JuicyJay_70 (J), JuicyJay_74 (J), Juniper1_80 (F1), Kalah2_66 (J), Kalah2_70 (J), Karhdo_80 (F1), KashFlow_68 (J), Kersh_83 (F1), Kingsley_85 (F1), Klein_71 (J), Klein_73 (J), Koella_76 (F1), Krakatau_77 (F1), KristaRAM_79 (F1), Kumao_59 (singleton), Latretium_82 (F1), Leozinho_79 (F1), Leperchaun_80 (F1), LilMoolah_82 (F1), Lilbit_10 (S), LittleE_74 (J), LittleE_77 (J), LittleLaf_9 (S), Llama_88 (F1), Llama_90 (F1), Llij_77 (F1), Llij_80 (F1), LordVader_75 (F), Lorde_81 (F1), Lucia_80 (F1),

Lucky2013_69 (J), LunaBlu_84 (F1), LunaStella_80 (F4), MadMen_79 (F1), MadMen_87 (F1), Mahavrat_81 (F1), Manda_43 (E), Mandlovu_76 (F1), Mandlovu_80 (F1), Marker_87 (F1), Marleymoo_65 (J), Marshmallow_43 (E), Marvin_8 (S), Medindi_85 (F1), Medindi_89 (F1), MiaZeal_72 (J), MiaZeal_76 (J), MilanaBonita_77 (F1), MilleniumForce_82 (F1), Minerva_77 (J), Minerva_79 (J), MinionDave_77 (F1), Minnie_77 (F1), Modragons_86 (F1), Modragons_88 (F1), MooMoo_80 (singleton), Mova_80 (F1), Mozy_88 (F1), Ms6_82 (F1), Mutaforma13_86 (F1), Myrale_44 (E), Nekros_70 (J), Nekros_72 (J), NewHope4_84 (F1), Nibley_65 (J), Nichirin_81 (F1), Nichirin_83 (F1), NihilNomen_72 (J), NihilNomen_76 (J), Nimbo_74 (F1), Nitzel_78 (F1), Nivrat_80 (F1), NormanBulbieJr_82 (F1), Ochi17_87 (F1), Ochi17_89 (F1), Odette_70 (J), Odette_74 (J), OfUltron_89 (F1), OfUltron_91 (F1), Ogopogo_87 (F1), Okabe_77 (F8), Oksu_86 (F1), OldBen_79 (F1), OlympiaSaint_81 (F1), Omega_77 (J), Omega_79 (J), PHappiness_82 (F1), PMC_78 (F1), Pacc40_73 (F1), Pepe_59 (A1), Phaja_42 (E), Phalconet_78 (F1), Phalconet_82 (F1), Phanphagia_80 (F1), Phatniss_78 (F1), PhesterPhotato_85 (F1), PhesterPhotato_89 (F1), Philus_84 (F1), Phoebus_74 (J), Phoebus_78 (J), Pippy_76 (F1), Poise_9 (S), Polo2Bam_89 (F1), PopTart_73 (F1), PopTart_77 (F1), Porcelain_71 (J), Porcelain_75 (J), Pound_75 (J), Pound_77 (J), Pringar_9 (S), Priscilla_84 (F1), QuickMath_80 (F1), Quico_91 (F1), Radiance_80 (F1), Raela_9 (S), Rearden_66 (J), Rearden_68 (J), Redno2_68 (J), Renaud18_93 (F4), RitaG_82 (F1), Rita_88 (F1), Rockne_82 (F1), Royals2015_86 (F1), Royals2015_90 (F1), SG4_81 (F1), Sabbb_83 (F1), Sandalphon_75 (F1), Sarma624_80 (F1), SassyB_73 (F1), SassyB_77 (F1), Schatzie_66 (J), Schatzie_70 (J), SeaLumen_86 (F1), Seabastian_89 (F1), Seabastian_91 (F1), Shaboozey_69 (J), ShamWow_44 (E), Shauna1_81 (F1), ShroomBoi_82 (F1), Solon_60 (A1), Soul22_82 (F2), Soul22_84 (F2), Spartacus_87 (F1), Spartacus_89 (F1), Sprinklers_16 (C1), Squint_72 (J), Squint_76 (J), Squirty_81 (F3), StAnnes_83 (F1), StellaBean_42 (E), Strokeseat_76 (F1), Strokeseat_80 (F1), SuperGrey_82 (F1), Superphikiman_69 (J), Superphikiman_73 (J), TChen_82 (F4), Taj_88 (F1), Taj_92 (F1), Tesla_9 (S), ThetaBob_85 (F4), ThreeRngTarjay_69 (J), ThreeRngTarjay_73 (J), Toto_43 (E), Traaww1_40 (E), Tuco_45 (E), Tweety_82 (F1), Tweety_86 (F1), UncleRicky_80 (F1), VRedHorse_80 (F1), VRedHorse_86 (F1), Violac_83 (F1), Violac_87 (F1), Wachhund_81 (F1), Wanda_75 (J), Wanda_77 (J), Wee_87 (F1), Wee_91 (F1), Whatsapiecost_74 (F1), WillSterrel_80 (F1), XFactor_77 (F1), Yeet_69 (J), Yeet_71 (J), Zapner_90 (F2), Zelink_69 (J), Zelink_73 (J), Zerg_82 (F1),

Start 70:

- Found in 6 of 358 (1.7%) of genes in pham
- Manual Annotations of this start: 5 of 323
- Called 100.0% of time when present
- Phage (with cluster) where this start called: DoRead_81 (F1), Estave1_93 (F1), Gandalph_79 (F1), Jant_81 (F1), Kenuha5_77 (F1), Mozy_86 (F1),

Start 71:

- Found in 1 of 358 (0.3%) of genes in pham
- No Manual Annotations of this start.
- Called 100.0% of time when present
- Phage (with cluster) where this start called: Cubone_64 (N),

Start 72:

- Found in 1 of 358 (0.3%) of genes in pham
- Manual Annotations of this start: 1 of 323
- Called 100.0% of time when present

- Phage (with cluster) where this start called: Tortoise12_60 (N),

Start 75:

- Found in 90 of 358 (25.1%) of genes in pham
- Manual Annotations of this start: 1 of 323
- Called 3.3% of time when present
- Phage (with cluster) where this start called: Daikon_44 (E), Marker_89 (F1), Mwanjiwa_84 (F1),

Start 76:

- Found in 229 of 358 (64.0%) of genes in pham
- Manual Annotations of this start: 4 of 323
- Called 2.2% of time when present
- Phage (with cluster) where this start called: Bobby_70 (J), IMpilo_79 (F1), Lucky2013_73 (J), Redno2_72 (J), Zeuska_63 (A1),

Start 80:

- Found in 3 of 358 (0.8%) of genes in pham
- Manual Annotations of this start: 2 of 323
- Called 66.7% of time when present
- Phage (with cluster) where this start called: ByChance_73 (F1), ShowerHandel_82 (F1),

Start 84:

- Found in 5 of 358 (1.4%) of genes in pham
- Manual Annotations of this start: 5 of 323
- Called 100.0% of time when present
- Phage (with cluster) where this start called: Chewbacca_61 (N), FirstPlacePfu_60 (P1), LilSpotty_76 (singleton), Tortoise12_58 (N), ZenTime222_56 (T),

Start 85:

- Found in 1 of 358 (0.3%) of genes in pham
- Manual Annotations of this start: 1 of 323
- Called 100.0% of time when present
- Phage (with cluster) where this start called: LilSpotty_77 (singleton),

Start 92:

- Found in 7 of 358 (2.0%) of genes in pham
- Manual Annotations of this start: 5 of 323
- Called 71.4% of time when present
- Phage (with cluster) where this start called: Bruns_60 (A1), Forsytheast_60 (A1), Moose_60 (A1), SkiPole_66 (A1), SwissCheese_62 (A1),

Start 96:

- Found in 6 of 358 (1.7%) of genes in pham
- Manual Annotations of this start: 1 of 323
- Called 16.7% of time when present
- Phage (with cluster) where this start called: Seanderson_61 (A1),

Summary by clusters:

There are 16 clusters represented in this pham: F1, F2, F3, F4, F5, F, F8, J, singleton, N, A1, S, P1, T, E, C1,

Info for manual annotations of cluster A1:

- Start number 58 was manually annotated 2 times for cluster A1.
- Start number 69 was manually annotated 9 times for cluster A1.
- Start number 76 was manually annotated 1 time for cluster A1.
- Start number 92 was manually annotated 5 times for cluster A1.
- Start number 96 was manually annotated 1 time for cluster A1.

Info for manual annotations of cluster C1:

- Start number 69 was manually annotated 3 times for cluster C1.

Info for manual annotations of cluster E:

- Start number 69 was manually annotated 20 times for cluster E.

Info for manual annotations of cluster F1:

- Start number 46 was manually annotated 1 time for cluster F1.
- Start number 51 was manually annotated 5 times for cluster F1.
- Start number 58 was manually annotated 1 time for cluster F1.
- Start number 62 was manually annotated 1 time for cluster F1.
- Start number 68 was manually annotated 2 times for cluster F1.
- Start number 69 was manually annotated 163 times for cluster F1.
- Start number 70 was manually annotated 5 times for cluster F1.
- Start number 75 was manually annotated 1 time for cluster F1.
- Start number 80 was manually annotated 2 times for cluster F1.

Info for manual annotations of cluster F2:

- Start number 68 was manually annotated 1 time for cluster F2.
- Start number 69 was manually annotated 6 times for cluster F2.

Info for manual annotations of cluster F3:

- Start number 69 was manually annotated 1 time for cluster F3.

Info for manual annotations of cluster F4:

- Start number 69 was manually annotated 4 times for cluster F4.

Info for manual annotations of cluster F5:

- Start number 69 was manually annotated 2 times for cluster F5.

Info for manual annotations of cluster J:

- Start number 69 was manually annotated 61 times for cluster J.
- Start number 76 was manually annotated 3 times for cluster J.

Info for manual annotations of cluster N:

- Start number 72 was manually annotated 1 time for cluster N.
- Start number 84 was manually annotated 2 times for cluster N.

Info for manual annotations of cluster P1:

- Start number 84 was manually annotated 1 time for cluster P1.

Info for manual annotations of cluster S:

- Start number 69 was manually annotated 14 times for cluster S.

Info for manual annotations of cluster T:

•Start number 84 was manually annotated 1 time for cluster T.

Gene Information:

Gene: ABCat_42 Start: 36113, Stop: 35817, Start Num: 69

Candidate Starts for ABCat_42:

(Start: 69 @36113 has 285 MA's), (81, 36077), (87, 36059), (101, 36026), (109, 35984), (145, 35837),

Gene: Akhila_78 Start: 48008, Stop: 48292, Start Num: 69

Candidate Starts for Akhila_78:

(Start: 69 @48008 has 285 MA's), (Start: 76 @48032 has 4 MA's), (104, 48107), (133, 48236), (145, 48272),

Gene: Ardmore_67 Start: 43684, Stop: 43968, Start Num: 69

Candidate Starts for Ardmore_67:

(Start: 69 @43684 has 285 MA's), (Start: 76 @43708 has 4 MA's), (104, 43783), (133, 43912), (145, 43948),

Gene: Ariel_75 Start: 47349, Stop: 47065, Start Num: 69

Candidate Starts for Ariel_75:

(Start: 69 @47349 has 285 MA's), (Start: 76 @47325 has 4 MA's), (104, 47250), (133, 47121), (145, 47085),

Gene: Ariel_71 Start: 45936, Stop: 45583, Start Num: 69

Candidate Starts for Ariel_71:

(Start: 69 @45936 has 285 MA's), (Start: 75 @45915 has 1 MA's), (79, 45903), (119, 45795), (130, 45702), (132, 45684), (134, 45672), (146, 45630), (149, 45606),

Gene: Ashballer_64 Start: 41640, Stop: 41353, Start Num: 69

Candidate Starts for Ashballer_64:

(Start: 58 @41670 has 3 MA's), (Start: 69 @41640 has 285 MA's), (Start: 76 @41616 has 4 MA's), (143, 41376),

Gene: Aubs_82 Start: 49731, Stop: 50015, Start Num: 69

Candidate Starts for Aubs_82:

(55, 49695), (Start: 69 @49731 has 285 MA's), (Start: 76 @49755 has 4 MA's), (133, 49959), (145, 49995),

Gene: Avani_90 Start: 47333, Stop: 47617, Start Num: 69

Candidate Starts for Avani_90:

(Start: 69 @47333 has 285 MA's), (Start: 76 @47357 has 4 MA's), (104, 47432), (133, 47561), (145, 47597),

Gene: BAKA_82 Start: 52624, Stop: 52340, Start Num: 69

Candidate Starts for BAKA_82:

(Start: 62 @52648 has 1 MA's), (Start: 69 @52624 has 285 MA's), (Start: 76 @52600 has 4 MA's), (104, 52525), (133, 52396), (145, 52360),

Gene: BadAgartude_17 Start: 5514, Stop: 5792, Start Num: 69

Candidate Starts for BadAgartude_17:

(53, 5475), (66, 5493), (Start: 69 @5514 has 285 MA's), (Start: 75 @5535 has 1 MA's), (79, 5547), (81, 5550), (86, 5565), (89, 5574), (133, 5736), (145, 5772),

Gene: Bagrid_74 Start: 50766, Stop: 50482, Start Num: 69

Candidate Starts for Bagrid_74:

(Start: 69 @50766 has 285 MA's), (Start: 76 @50742 has 4 MA's), (104, 50667), (133, 50538), (145, 50502),

Gene: Balomoji_42 Start: 35703, Stop: 35428, Start Num: 69

Candidate Starts for Balomoji_42:

(38, 35775), (47, 35751), (49, 35748), (Start: 69 @35703 has 285 MA's), (Start: 75 @35682 has 1 MA's), (79, 35670), (119, 35562), (133, 35484), (145, 35448),

Gene: Batiatus_81 Start: 49093, Stop: 49377, Start Num: 69

Candidate Starts for Batiatus_81:

(Start: 69 @49093 has 285 MA's), (Start: 76 @49117 has 4 MA's), (104, 49192), (133, 49321), (145, 49357),

Gene: Batiatus_83 Start: 49708, Stop: 50034, Start Num: 69

Candidate Starts for Batiatus_83:

(28, 49603), (Start: 69 @49708 has 285 MA's), (79, 49741), (81, 49744), (91, 49771), (94, 49777), (119, 49897), (149, 50011),

Gene: Beelzebub_12 Start: 3476, Stop: 3760, Start Num: 69

Candidate Starts for Beelzebub_12:

(Start: 62 @3452 has 1 MA's), (Start: 69 @3476 has 285 MA's), (Start: 76 @3500 has 4 MA's), (104, 3575), (133, 3704), (145, 3740),

Gene: Beem_75 Start: 51626, Stop: 51342, Start Num: 69

Candidate Starts for Beem_75:

(Start: 69 @51626 has 285 MA's), (Start: 76 @51602 has 4 MA's), (104, 51527), (133, 51398), (145, 51362),

Gene: Beem_71 Start: 50213, Stop: 49920, Start Num: 69

Candidate Starts for Beem_71:

(Start: 69 @50213 has 285 MA's), (Start: 75 @50192 has 1 MA's), (79, 50180), (119, 50072), (122, 50024), (130, 50012), (136, 49985), (137, 49982), (149, 49943),

Gene: BigPhil_74 Start: 44927, Stop: 45211, Start Num: 69

Candidate Starts for BigPhil_74:

(Start: 62 @44903 has 1 MA's), (Start: 69 @44927 has 285 MA's), (Start: 76 @44951 has 4 MA's), (104, 45026), (133, 45155), (145, 45191),

Gene: BilboSwaggins_43 Start: 36121, Stop: 35825, Start Num: 69

Candidate Starts for BilboSwaggins_43:

(Start: 69 @36121 has 285 MA's), (81, 36085), (87, 36067), (101, 36034), (109, 35992), (145, 35845),

Gene: Bipolar_84 Start: 50621, Stop: 50905, Start Num: 69

Candidate Starts for Bipolar_84:

(55, 50585), (Start: 69 @50621 has 285 MA's), (Start: 76 @50645 has 4 MA's), (104, 50720), (133, 50849), (145, 50885),

Gene: Blackbeetle_9 Start: 2787, Stop: 3071, Start Num: 69
Candidate Starts for Blackbeetle_9:
(Start: 69 @2787 has 285 MA's), (Start: 76 @2811 has 4 MA's), (104, 2886), (133, 3015), (145, 3051),

Gene: Blarby_91 Start: 47885, Stop: 48169, Start Num: 69
Candidate Starts for Blarby_91:
(Start: 69 @47885 has 285 MA's), (Start: 76 @47909 has 4 MA's), (133, 48113), (145, 48149),

Gene: Blexus_76 Start: 48851, Stop: 49147, Start Num: 69
Candidate Starts for Blexus_76:
(Start: 69 @48851 has 285 MA's), (81, 48887), (87, 48905), (101, 48938), (109, 48980), (133, 49091),
(145, 49127),

Gene: Blexus_80 Start: 49926, Stop: 50210, Start Num: 69
Candidate Starts for Blexus_80:
(Start: 69 @49926 has 285 MA's), (Start: 76 @49950 has 4 MA's), (79, 49959), (110, 50058), (119, 50073), (149, 50187),

Gene: BluSpix_59 Start: 36720, Stop: 36373, Start Num: 69
Candidate Starts for BluSpix_59:
(9, 36921), (43, 36777), (44, 36774), (Start: 69 @36720 has 285 MA's), (73, 36708), (81, 36678), (88, 36660), (98, 36627), (107, 36585), (132, 36471), (149, 36396),

Gene: Bobby_70 Start: 49641, Stop: 49345, Start Num: 76
Candidate Starts for Bobby_70:
(Start: 62 @49689 has 1 MA's), (Start: 69 @49665 has 285 MA's), (Start: 76 @49641 has 4 MA's),
(104, 49566), (133, 49437), (145, 49401),

Gene: Boomer_85 Start: 49678, Stop: 49962, Start Num: 69
Candidate Starts for Boomer_85:
(Start: 69 @49678 has 285 MA's), (Start: 76 @49702 has 4 MA's), (104, 49777), (133, 49906), (145, 49942),

Gene: BronnyJames_70 Start: 45965, Stop: 45681, Start Num: 69
Candidate Starts for BronnyJames_70:
(Start: 69 @45965 has 285 MA's), (Start: 76 @45941 has 4 MA's), (133, 45737), (145, 45701),

Gene: BronnyJames_67 Start: 44925, Stop: 44647, Start Num: 69
Candidate Starts for BronnyJames_67:
(44, 44982), (Start: 69 @44925 has 285 MA's), (Start: 76 @44901 has 4 MA's), (79, 44892), (93, 44859), (97, 44847), (99, 44844), (112, 44796), (119, 44781), (133, 44703), (145, 44667),

Gene: Brookers_76 Start: 47878, Stop: 48162, Start Num: 69
Candidate Starts for Brookers_76:
(Start: 62 @47854 has 1 MA's), (Start: 69 @47878 has 285 MA's), (Start: 76 @47902 has 4 MA's),
(104, 47977), (133, 48106), (145, 48142),

Gene: Bruns_60 Start: 39755, Stop: 39507, Start Num: 92
Candidate Starts for Bruns_60:
(65, 39851), (Start: 69 @39827 has 285 MA's), (77, 39797), (Start: 92 @39755 has 5 MA's), (Start: 96 @39743 has 1 MA's), (149, 39530),

Gene: Bubbles123_76 Start: 48608, Stop: 48892, Start Num: 69

Candidate Starts for Bubbles123_76:

(Start: 58 @48578 has 3 MA's), (Start: 62 @48584 has 1 MA's), (Start: 69 @48608 has 285 MA's), (Start: 76 @48632 has 4 MA's), (104, 48707), (133, 48836), (145, 48872),

Gene: Budgie_46 Start: 35211, Stop: 34930, Start Num: 69

Candidate Starts for Budgie_46:

(Start: 69 @35211 has 285 MA's), (Start: 76 @35187 has 4 MA's), (79, 35178), (94, 35145), (97, 35133), (99, 35130), (119, 35067), (149, 34953),

Gene: Burwell21_76 Start: 48586, Stop: 48870, Start Num: 69

Candidate Starts for Burwell21_76:

(Start: 69 @48586 has 285 MA's), (Start: 76 @48610 has 4 MA's), (104, 48685), (133, 48814), (145, 48850),

Gene: BuzzLyseyear_92 Start: 52666, Stop: 52950, Start Num: 69

Candidate Starts for BuzzLyseyear_92:

(Start: 69 @52666 has 285 MA's), (Start: 76 @52690 has 4 MA's), (79, 52699), (110, 52798), (119, 52813), (149, 52927),

Gene: ByChance_73 Start: 44779, Stop: 45045, Start Num: 80

Candidate Starts for ByChance_73:

(Start: 80 @44779 has 2 MA's), (90, 44806), (95, 44821), (119, 44911), (133, 44989), (145, 45025),

Gene: Byougenkin_82 Start: 47350, Stop: 47634, Start Num: 69

Candidate Starts for Byougenkin_82:

(Start: 69 @47350 has 285 MA's), (Start: 76 @47374 has 4 MA's), (79, 47383), (110, 47482), (119, 47497), (149, 47611),

Gene: Cali_17 Start: 6490, Stop: 6768, Start Num: 69

Candidate Starts for Cali_17:

(53, 6451), (66, 6469), (Start: 69 @6490 has 285 MA's), (Start: 75 @6511 has 1 MA's), (79, 6523), (81, 6526), (86, 6541), (89, 6550), (133, 6712), (145, 6748),

Gene: CaptainTrips_81 Start: 48491, Stop: 48775, Start Num: 69

Candidate Starts for CaptainTrips_81:

(Start: 69 @48491 has 285 MA's), (Start: 76 @48515 has 4 MA's), (133, 48719), (145, 48755),

Gene: Cerasum_75 Start: 44945, Stop: 45229, Start Num: 69

Candidate Starts for Cerasum_75:

(Start: 62 @44921 has 1 MA's), (Start: 69 @44945 has 285 MA's), (Start: 76 @44969 has 4 MA's), (104, 45044), (133, 45173), (145, 45209),

Gene: Che8_86 Start: 49874, Stop: 50158, Start Num: 69

Candidate Starts for Che8_86:

(30, 49778), (37, 49802), (Start: 69 @49874 has 285 MA's), (Start: 76 @49898 has 4 MA's), (133, 50102), (145, 50138),

Gene: Che9d_94 Start: 49583, Stop: 49876, Start Num: 69

Candidate Starts for Che9d_94:

(61, 49556), (Start: 69 @49583 has 285 MA's), (Start: 75 @49604 has 1 MA's), (81, 49619), (119, 49745), (149, 49853),

Gene: Cheese puff_91 Start: 49733, Stop: 50089, Start Num: 69

Candidate Starts for Cheesebuff_91:

(Start: 69 @49733 has 285 MA's), (Start: 75 @49754 has 1 MA's), (81, 49769), (113, 49862), (130, 49970), (132, 49988), (134, 50000), (146, 50042), (149, 50066),

Gene: Chewbacca_61 Start: 37859, Stop: 38119, Start Num: 84

Candidate Starts for Chewbacca_61:

(3, 37556), (6, 37577), (13, 37631), (34, 37733), (74, 37829), (Start: 84 @37859 has 5 MA's), (95, 37892), (124, 38033), (128, 38045), (133, 38060), (141, 38084), (145, 38096), (148, 38102),

Gene: Clank_81 Start: 46862, Stop: 47185, Start Num: 69

Candidate Starts for Clank_81:

(33, 46781), (Start: 69 @46862 has 285 MA's), (Start: 76 @46886 has 4 MA's), (104, 46961), (126, 47072), (149, 47162),

Gene: Clarkson_10 Start: 3252, Stop: 3536, Start Num: 69

Candidate Starts for Clarkson_10:

(Start: 62 @3228 has 1 MA's), (Start: 69 @3252 has 285 MA's), (Start: 76 @3276 has 4 MA's), (104, 3351), (133, 3480), (145, 3516),

Gene: Clifton_74 Start: 47402, Stop: 47686, Start Num: 69

Candidate Starts for Clifton_74:

(Start: 69 @47402 has 285 MA's), (Start: 76 @47426 has 4 MA's), (104, 47501), (133, 47630), (145, 47666),

Gene: Coco12_78 Start: 49002, Stop: 49286, Start Num: 69

Candidate Starts for Coco12_78:

(Start: 62 @48978 has 1 MA's), (Start: 69 @49002 has 285 MA's), (Start: 76 @49026 has 4 MA's), (104, 49101), (133, 49230), (145, 49266),

Gene: Corazon_9 Start: 3205, Stop: 3489, Start Num: 69

Candidate Starts for Corazon_9:

(Start: 62 @3181 has 1 MA's), (Start: 69 @3205 has 285 MA's), (Start: 76 @3229 has 4 MA's), (104, 3304), (133, 3433), (145, 3469),

Gene: Cornie_78 Start: 47540, Stop: 47824, Start Num: 69

Candidate Starts for Cornie_78:

(Start: 69 @47540 has 285 MA's), (Start: 76 @47564 has 4 MA's), (133, 47768), (145, 47804),

Gene: Cornie_82 Start: 48423, Stop: 48782, Start Num: 69

Candidate Starts for Cornie_82:

(Start: 69 @48423 has 285 MA's), (Start: 76 @48447 has 4 MA's), (79, 48456), (113, 48555), (119, 48570), (130, 48663), (132, 48681), (134, 48693), (146, 48735), (149, 48759),

Gene: Cornucopia_81 Start: 47550, Stop: 47819, Start Num: 69

Candidate Starts for Cornucopia_81:

(Start: 69 @47550 has 285 MA's), (Start: 75 @47571 has 1 MA's), (116, 47670), (117, 47676), (149, 47796),

Gene: Cornucopia_85 Start: 48642, Stop: 48905, Start Num: 69

Candidate Starts for Cornucopia_85:

(Start: 69 @48642 has 285 MA's), (Start: 76 @48666 has 4 MA's), (79, 48675), (119, 48789), (139, 48864),

Gene: Courthouse_70 Start: 46345, Stop: 45986, Start Num: 69
Candidate Starts for Courthouse_70:
(Start: 69 @46345 has 285 MA's), (Start: 75 @46324 has 1 MA's), (79, 46312), (119, 46204), (142, 46105), (144, 46102), (152, 46009),

Gene: Courthouse_72 Start: 46987, Stop: 46703, Start Num: 69
Candidate Starts for Courthouse_72:
(Start: 69 @46987 has 285 MA's), (Start: 76 @46963 has 4 MA's), (133, 46759), (145, 46723),

Gene: CrystalP_44 Start: 36121, Stop: 35825, Start Num: 69
Candidate Starts for CrystalP_44:
(Start: 69 @36121 has 285 MA's), (81, 36085), (87, 36067), (101, 36034), (109, 35992), (145, 35845),

Gene: Cubone_64 Start: 39109, Stop: 39372, Start Num: 71
Candidate Starts for Cubone_64:
(1, 38800), (2, 38848), (5, 38860), (26, 38983), (61, 39079), (71, 39109), (Start: 76 @39130 has 4 MA's), (143, 39349),

Gene: DLane_83 Start: 50315, Stop: 50599, Start Num: 69
Candidate Starts for DLane_83:
(Start: 69 @50315 has 285 MA's), (Start: 76 @50339 has 4 MA's), (104, 50414), (145, 50579),

Gene: DRBy19_85 Start: 51131, Stop: 51415, Start Num: 69
Candidate Starts for DRBy19_85:
(Start: 69 @51131 has 285 MA's), (Start: 76 @51155 has 4 MA's), (104, 51230), (133, 51359), (145, 51395),

Gene: Daenerys_81 Start: 50626, Stop: 50910, Start Num: 69
Candidate Starts for Daenerys_81:
(Start: 69 @50626 has 285 MA's), (Start: 76 @50650 has 4 MA's), (104, 50725), (133, 50854), (145, 50890),

Gene: Daikon_44 Start: 35703, Stop: 35449, Start Num: 75
Candidate Starts for Daikon_44:
(38, 35796), (47, 35772), (49, 35769), (Start: 69 @35724 has 285 MA's), (Start: 75 @35703 has 1 MA's), (79, 35691), (119, 35583), (133, 35505), (145, 35469),

Gene: Dallas_70 Start: 49134, Stop: 48841, Start Num: 69
Candidate Starts for Dallas_70:
(Start: 69 @49134 has 285 MA's), (Start: 75 @49113 has 1 MA's), (79, 49101), (119, 48993), (122, 48945), (130, 48933), (136, 48906), (137, 48903), (149, 48864),

Gene: Dallas_74 Start: 50547, Stop: 50263, Start Num: 69
Candidate Starts for Dallas_74:
(Start: 69 @50547 has 285 MA's), (Start: 76 @50523 has 4 MA's), (104, 50448), (133, 50319), (145, 50283),

Gene: DeadP_82 Start: 48110, Stop: 48394, Start Num: 69
Candidate Starts for DeadP_82:
(14, 47948), (Start: 69 @48110 has 285 MA's), (Start: 76 @48134 has 4 MA's), (104, 48209), (133, 48338), (145, 48374),

Gene: DeadP_86 Start: 49174, Stop: 49458, Start Num: 69

Candidate Starts for DeadP_86:

(Start: 69 @49174 has 285 MA's), (Start: 76 @49198 has 4 MA's), (79, 49207), (110, 49306), (119, 49321), (149, 49435),

Gene: Deb65_75 Start: 48348, Stop: 48632, Start Num: 69

Candidate Starts for Deb65_75:

(Start: 69 @48348 has 285 MA's), (Start: 76 @48372 has 4 MA's), (104, 48447), (133, 48576), (145, 48612),

Gene: DirtMcgirt_80 Start: 46288, Stop: 46572, Start Num: 69

Candidate Starts for DirtMcgirt_80:

(Start: 69 @46288 has 285 MA's), (Start: 76 @46312 has 4 MA's), (104, 46387), (133, 46516), (145, 46552),

Gene: DmpstrDiver_75 Start: 50974, Stop: 50690, Start Num: 69

Candidate Starts for DmpstrDiver_75:

(Start: 69 @50974 has 285 MA's), (Start: 76 @50950 has 4 MA's), (104, 50875), (133, 50746), (145, 50710),

Gene: DmpstrDiver_71 Start: 49561, Stop: 49268, Start Num: 69

Candidate Starts for DmpstrDiver_71:

(Start: 69 @49561 has 285 MA's), (Start: 75 @49540 has 1 MA's), (79, 49528), (119, 49420), (122, 49372), (130, 49360), (136, 49333), (137, 49330), (149, 49291),

Gene: DoRead_81 Start: 46952, Stop: 47230, Start Num: 70

Candidate Starts for DoRead_81:

(54, 46910), (67, 46928), (Start: 70 @46952 has 5 MA's), (Start: 75 @46973 has 1 MA's), (81, 46985), (133, 47174), (145, 47210),

Gene: Donkeykong_86 Start: 50724, Stop: 51008, Start Num: 69

Candidate Starts for Donkeykong_86:

(14, 50562), (Start: 69 @50724 has 285 MA's), (Start: 76 @50748 has 4 MA's), (104, 50823), (133, 50952), (145, 50988),

Gene: Donkeykong_88 Start: 51342, Stop: 51620, Start Num: 69

Candidate Starts for Donkeykong_88:

(Start: 69 @51342 has 285 MA's), (Start: 76 @51366 has 4 MA's), (79, 51375), (93, 51408), (97, 51420), (99, 51423), (112, 51471), (119, 51486), (133, 51564), (145, 51600),

Gene: DotProduct_76 Start: 47105, Stop: 47389, Start Num: 69

Candidate Starts for DotProduct_76:

(Start: 69 @47105 has 285 MA's), (Start: 76 @47129 has 4 MA's), (104, 47204), (133, 47333), (145, 47369),

Gene: Drago_78 Start: 46291, Stop: 46575, Start Num: 69

Candidate Starts for Drago_78:

(Start: 69 @46291 has 285 MA's), (Start: 76 @46315 has 4 MA's), (104, 46390), (133, 46519), (145, 46555),

Gene: Duke13_80 Start: 51836, Stop: 51552, Start Num: 69

Candidate Starts for Duke13_80:

(Start: 62 @51860 has 1 MA's), (Start: 69 @51836 has 285 MA's), (Start: 76 @51812 has 4 MA's), (104, 51737), (133, 51608), (145, 51572),

Gene: Eish_88 Start: 51057, Stop: 51341, Start Num: 69

Candidate Starts for Eish_88:

(Start: 69 @51057 has 285 MA's), (Start: 76 @51081 has 4 MA's), (79, 51090), (110, 51189), (119, 51204), (149, 51318),

Gene: Eish_84 Start: 49994, Stop: 50278, Start Num: 69

Candidate Starts for Eish_84:

(Start: 69 @49994 has 285 MA's), (Start: 76 @50018 has 4 MA's), (104, 50093), (133, 50222), (145, 50258),

Gene: Ejimix_71 Start: 50999, Stop: 50706, Start Num: 69

Candidate Starts for Ejimix_71:

(Start: 69 @50999 has 285 MA's), (Start: 75 @50978 has 1 MA's), (79, 50966), (119, 50858), (122, 50810), (130, 50798), (136, 50771), (137, 50768), (149, 50729),

Gene: Ejimix_75 Start: 52415, Stop: 52131, Start Num: 69

Candidate Starts for Ejimix_75:

(Start: 69 @52415 has 285 MA's), (Start: 76 @52391 has 4 MA's), (104, 52316), (133, 52187), (145, 52151),

Gene: EleanorGeorge_80 Start: 48792, Stop: 49136, Start Num: 68

Candidate Starts for EleanorGeorge_80:

(Start: 68 @48792 has 3 MA's), (Start: 75 @48819 has 1 MA's), (81, 48834), (119, 48924), (130, 49017), (132, 49035), (134, 49047), (146, 49089), (149, 49113),

Gene: Emma_88 Start: 49160, Stop: 49480, Start Num: 69

Candidate Starts for Emma_88:

(57, 49127), (Start: 69 @49160 has 285 MA's), (Start: 76 @49184 has 4 MA's), (79, 49193), (110, 49292), (119, 49307), (129, 49367), (149, 49457),

Gene: Enby_82 Start: 46567, Stop: 46851, Start Num: 69

Candidate Starts for Enby_82:

(Start: 69 @46567 has 285 MA's), (Start: 76 @46591 has 4 MA's), (104, 46666), (133, 46795), (145, 46831),

Gene: EnzoK_61 Start: 38364, Stop: 38077, Start Num: 69

Candidate Starts for EnzoK_61:

(9, 38565), (43, 38421), (44, 38418), (Start: 69 @38364 has 285 MA's), (Start: 75 @38343 has 1 MA's), (79, 38331), (119, 38223), (149, 38100),

Gene: Enzomatic_90 Start: 47423, Stop: 47707, Start Num: 69

Candidate Starts for Enzomatic_90:

(Start: 69 @47423 has 285 MA's), (Start: 76 @47447 has 4 MA's), (104, 47522), (133, 47651), (145, 47687),

Gene: Eradicator_76 Start: 47953, Stop: 48312, Start Num: 69

Candidate Starts for Eradicator_76:

(Start: 69 @47953 has 285 MA's), (Start: 76 @47977 has 4 MA's), (79, 47986), (113, 48085), (119, 48100), (130, 48193), (132, 48211), (134, 48223), (146, 48265), (149, 48289),

Gene: Eradicator_72 Start: 46896, Stop: 47174, Start Num: 69

Candidate Starts for Eradicator_72:

(53, 46857), (66, 46875), (Start: 69 @46896 has 285 MA's), (Start: 75 @46917 has 1 MA's), (79, 46929), (81, 46932), (86, 46947), (89, 46956), (133, 47118), (145, 47154),

Gene: EricMillard_74 Start: 51619, Stop: 51335, Start Num: 69

Candidate Starts for EricMillard_74:

(Start: 69 @51619 has 285 MA's), (Start: 76 @51595 has 4 MA's), (104, 51520), (133, 51391), (145, 51355),

Gene: Estave1_93 Start: 53691, Stop: 53975, Start Num: 70

Candidate Starts for Estave1_93:

(67, 53676), (Start: 70 @53691 has 5 MA's), (Start: 76 @53715 has 4 MA's), (104, 53790), (133, 53919), (145, 53955),

Gene: Eyeball_63 Start: 41903, Stop: 41556, Start Num: 69

Candidate Starts for Eyeball_63:

(9, 42104), (43, 41960), (44, 41957), (Start: 69 @41903 has 285 MA's), (73, 41891), (132, 41654), (149, 41579),

Gene: Fancypants_89 Start: 51307, Stop: 51630, Start Num: 69

Candidate Starts for Fancypants_89:

(19, 51169), (Start: 69 @51307 has 285 MA's), (Start: 75 @51328 has 1 MA's), (81, 51343), (103, 51412), (115, 51469), (118, 51484), (119, 51493), (120, 51499), (149, 51607),

Gene: FeliMaine_10 Start: 3253, Stop: 3537, Start Num: 69

Candidate Starts for FeliMaine_10:

(Start: 62 @3229 has 1 MA's), (Start: 69 @3253 has 285 MA's), (Start: 76 @3277 has 4 MA's), (104, 3352), (133, 3481), (145, 3517),

Gene: Filuzino_82 Start: 50908, Stop: 51192, Start Num: 69

Candidate Starts for Filuzino_82:

(Start: 69 @50908 has 285 MA's), (Start: 76 @50932 has 4 MA's), (104, 51007), (133, 51136), (145, 51172),

Gene: Firehouse51_79 Start: 50692, Stop: 51051, Start Num: 69

Candidate Starts for Firehouse51_79:

(8, 50491), (11, 50503), (16, 50563), (24, 50575), (36, 50629), (Start: 69 @50692 has 285 MA's), (Start: 76 @50716 has 4 MA's), (79, 50725), (94, 50758), (119, 50839), (130, 50932), (132, 50950), (134, 50962), (146, 51004), (149, 51028),

Gene: FirstPlacePfu_60 Start: 37764, Stop: 38024, Start Num: 84

Candidate Starts for FirstPlacePfu_60:

(41, 37662), (45, 37671), (Start: 84 @37764 has 5 MA's), (95, 37797), (124, 37938), (128, 37950), (133, 37965), (141, 37989), (145, 38001), (148, 38007),

Gene: Flathead_81 Start: 48740, Stop: 49024, Start Num: 69

Candidate Starts for Flathead_81:

(Start: 69 @48740 has 285 MA's), (Start: 76 @48764 has 4 MA's), (104, 48839), (133, 48968), (145, 49004),

Gene: Florinda_94 Start: 51591, Stop: 51875, Start Num: 69

Candidate Starts for Florinda_94:

(Start: 69 @51591 has 285 MA's), (Start: 76 @51615 has 4 MA's), (79, 51624), (110, 51723), (119, 51738), (149, 51852),

Gene: Flypotenuse_38 Start: 34455, Stop: 34180, Start Num: 69

Candidate Starts for Flypotenuse_38:

(38, 34527), (47, 34503), (49, 34500), (Start: 69 @34455 has 285 MA's), (Start: 75 @34434 has 1 MA's), (79, 34422), (119, 34314), (133, 34236), (145, 34200),

Gene: Forsytheast_60 Start: 39923, Stop: 39675, Start Num: 92

Candidate Starts for Forsytheast_60:

(65, 40019), (Start: 69 @39995 has 285 MA's), (77, 39965), (Start: 92 @39923 has 5 MA's), (Start: 96 @39911 has 1 MA's), (149, 39698),

Gene: Fruitloop_78 Start: 48745, Stop: 49029, Start Num: 69

Candidate Starts for Fruitloop_78:

(59, 48718), (Start: 69 @48745 has 285 MA's), (Start: 76 @48769 has 4 MA's), (104, 48844), (133, 48973), (145, 49009),

Gene: Gachnar_61 Start: 41094, Stop: 40789, Start Num: 69

Candidate Starts for Gachnar_61:

(9, 41295), (43, 41151), (44, 41148), (Start: 69 @41094 has 285 MA's), (73, 41082), (81, 41052), (88, 41034), (98, 41001), (107, 40959), (149, 40812),

Gene: Galactic_82 Start: 48872, Stop: 49156, Start Num: 69

Candidate Starts for Galactic_82:

(Start: 69 @48872 has 285 MA's), (Start: 76 @48899 has 4 MA's), (79, 48908), (94, 48941), (97, 48953), (99, 48956), (110, 49004), (119, 49019), (149, 49133),

Gene: Galactic_80 Start: 48440, Stop: 48724, Start Num: 69

Candidate Starts for Galactic_80:

(42, 48380), (Start: 69 @48440 has 285 MA's), (Start: 76 @48464 has 4 MA's), (104, 48539), (133, 48668), (145, 48704),

Gene: Gandalph_79 Start: 46011, Stop: 46295, Start Num: 70

Candidate Starts for Gandalph_79:

(Start: 70 @46011 has 5 MA's), (Start: 76 @46035 has 4 MA's), (104, 46110), (133, 46239), (145, 46275),

Gene: Gator_41 Start: 35594, Stop: 35319, Start Num: 69

Candidate Starts for Gator_41:

(38, 35666), (47, 35642), (49, 35639), (Start: 69 @35594 has 285 MA's), (Start: 75 @35573 has 1 MA's), (79, 35561), (119, 35453), (133, 35375), (145, 35339),

Gene: Geralt_75 Start: 48346, Stop: 48630, Start Num: 69

Candidate Starts for Geralt_75:

(Start: 69 @48346 has 285 MA's), (Start: 76 @48370 has 4 MA's), (104, 48445), (133, 48574), (145, 48610),

Gene: Girafales_91 Start: 51196, Stop: 51480, Start Num: 69

Candidate Starts for Girafales_91:

(Start: 69 @51196 has 285 MA's), (Start: 76 @51220 has 4 MA's), (79, 51229), (110, 51328), (119, 51343), (149, 51457),

Gene: Glexan_41 Start: 35582, Stop: 35307, Start Num: 69

Candidate Starts for Glexan_41:

(38, 35654), (47, 35630), (49, 35627), (Start: 69 @35582 has 285 MA's), (Start: 75 @35561 has 1 MA's), (79, 35549), (119, 35441), (133, 35363), (145, 35327),

Gene: Grimmer_95 Start: 50263, Stop: 50601, Start Num: 69

Candidate Starts for Grimmer_95:

(28, 50158), (36, 50188), (Start: 69 @50263 has 285 MA's), (Start: 75 @50284 has 1 MA's), (81, 50299), (119, 50389), (130, 50482), (132, 50500), (134, 50512), (146, 50554), (149, 50578),

Gene: Guppsters_76 Start: 46731, Stop: 47015, Start Num: 69

Candidate Starts for Guppsters_76:

(Start: 62 @46707 has 1 MA's), (Start: 69 @46731 has 285 MA's), (Start: 76 @46755 has 4 MA's), (104, 46830), (133, 46959), (145, 46995),

Gene: Hades_81 Start: 47173, Stop: 47484, Start Num: 51

Candidate Starts for Hades_81:

(40, 47146), (Start: 51 @47173 has 5 MA's), (Start: 75 @47236 has 1 MA's), (117, 47341), (149, 47461),

Gene: Hades_80 Start: 46896, Stop: 47180, Start Num: 69

Candidate Starts for Hades_80:

(Start: 69 @46896 has 285 MA's), (Start: 76 @46920 has 4 MA's), (104, 46995), (133, 47124),

Gene: Halley_77 Start: 51626, Stop: 51342, Start Num: 69

Candidate Starts for Halley_77:

(Start: 69 @51626 has 285 MA's), (Start: 76 @51602 has 4 MA's), (104, 51527), (133, 51398), (145, 51362),

Gene: Halley_73 Start: 50213, Stop: 49920, Start Num: 69

Candidate Starts for Halley_73:

(Start: 69 @50213 has 285 MA's), (Start: 75 @50192 has 1 MA's), (79, 50180), (119, 50072), (122, 50024), (130, 50012), (136, 49985), (137, 49982), (149, 49943),

Gene: Hamulus_80 Start: 48587, Stop: 48871, Start Num: 69

Candidate Starts for Hamulus_80:

(Start: 69 @48587 has 285 MA's), (Start: 76 @48611 has 4 MA's), (104, 48686), (133, 48815), (145, 48851),

Gene: Hannaconda_70 Start: 46036, Stop: 45752, Start Num: 69

Candidate Starts for Hannaconda_70:

(Start: 69 @46036 has 285 MA's), (Start: 76 @46012 has 4 MA's), (133, 45808), (145, 45772),

Gene: Harella_43 Start: 36098, Stop: 35823, Start Num: 69

Candidate Starts for Harella_43:

(38, 36170), (47, 36146), (49, 36143), (Start: 69 @36098 has 285 MA's), (Start: 75 @36077 has 1 MA's), (79, 36065), (119, 35957), (133, 35879), (145, 35843),

Gene: Harley_80 Start: 48340, Stop: 48624, Start Num: 69

Candidate Starts for Harley_80:

(Start: 69 @48340 has 285 MA's), (Start: 76 @48364 has 4 MA's), (104, 48439), (133, 48568), (145, 48604),

Gene: Hlubikazi_81 Start: 47588, Stop: 47899, Start Num: 51

Candidate Starts for Hlubikazi_81:

(40, 47561), (Start: 51 @47588 has 5 MA's), (Start: 75 @47651 has 1 MA's), (117, 47756), (149, 47876),

Gene: Hlubikazi_80 Start: 47314, Stop: 47595, Start Num: 69

Candidate Starts for Hlubikazi_80:

(Start: 69 @47314 has 285 MA's), (Start: 76 @47338 has 4 MA's), (79, 47347), (119, 47461), (131, 47533), (133, 47539),

Gene: Hlubikazi_76 Start: 46227, Stop: 46511, Start Num: 69

Candidate Starts for Hlubikazi_76:

(Start: 62 @46203 has 1 MA's), (Start: 69 @46227 has 285 MA's), (Start: 76 @46251 has 4 MA's), (104, 46326), (133, 46455), (145, 46491),

Gene: HokkenD_64 Start: 48482, Stop: 48189, Start Num: 69

Candidate Starts for HokkenD_64:

(Start: 69 @48482 has 285 MA's), (Start: 75 @48461 has 1 MA's), (79, 48449), (119, 48341), (122, 48293), (130, 48281), (136, 48254), (137, 48251), (149, 48212),

Gene: HokkenD_68 Start: 49895, Stop: 49611, Start Num: 69

Candidate Starts for HokkenD_68:

(Start: 69 @49895 has 285 MA's), (Start: 76 @49871 has 4 MA's), (104, 49796), (133, 49667), (145, 49631),

Gene: Hughesyang_70 Start: 50142, Stop: 49849, Start Num: 69

Candidate Starts for Hughesyang_70:

(Start: 69 @50142 has 285 MA's), (Start: 75 @50121 has 1 MA's), (79, 50109), (119, 50001), (122, 49953), (130, 49941), (136, 49914), (137, 49911), (149, 49872),

Gene: Hughesyang_74 Start: 51585, Stop: 51301, Start Num: 69

Candidate Starts for Hughesyang_74:

(Start: 69 @51585 has 285 MA's), (Start: 76 @51561 has 4 MA's), (104, 51486), (133, 51357), (145, 51321),

Gene: Huphlepuuff_10 Start: 2982, Stop: 3266, Start Num: 69

Candidate Starts for Huphlepuuff_10:

(Start: 62 @2958 has 1 MA's), (Start: 69 @2982 has 285 MA's), (Start: 76 @3006 has 4 MA's), (104, 3081), (133, 3210), (145, 3246),

Gene: IHOP_42 Start: 35685, Stop: 35389, Start Num: 69

Candidate Starts for IHOP_42:

(Start: 69 @35685 has 285 MA's), (81, 35649), (87, 35631), (101, 35598), (109, 35556), (145, 35409),

Gene: IMpilo_79 Start: 47727, Stop: 47987, Start Num: 76

Candidate Starts for IMpilo_79:

(32, 47616), (Start: 69 @47703 has 285 MA's), (Start: 76 @47727 has 4 MA's), (79, 47736), (110, 47835), (119, 47850), (149, 47964),

Gene: IMpilo_76 Start: 46638, Stop: 46922, Start Num: 69

Candidate Starts for IMpilo_76:

(4, 46392), (7, 46407), (Start: 69 @46638 has 285 MA's), (Start: 76 @46662 has 4 MA's), (104, 46737), (133, 46866), (145, 46902),

Gene: Ibhubesi_80 Start: 47022, Stop: 47336, Start Num: 58

Candidate Starts for Ibhubesi_80:

(Start: 58 @47022 has 3 MA's), (Start: 62 @47028 has 1 MA's), (Start: 69 @47052 has 285 MA's), (Start: 76 @47076 has 4 MA's), (131, 47274), (133, 47280), (145, 47316),

Gene: IgnatiusPatJac_61 Start: 40665, Stop: 40318, Start Num: 69

Candidate Starts for IgnatiusPatJac_61:

(9, 40866), (43, 40722), (44, 40719), (Start: 69 @40665 has 285 MA's), (73, 40653), (81, 40623), (88, 40605), (98, 40572), (107, 40530), (132, 40416), (149, 40341),

Gene: Inca_41 Start: 34210, Stop: 33914, Start Num: 69

Candidate Starts for Inca_41:

(Start: 69 @34210 has 285 MA's), (81, 34174), (87, 34156), (101, 34123), (109, 34081), (145, 33934),

Gene: IrishSherpFalk_81 Start: 49331, Stop: 49615, Start Num: 69

Candidate Starts for IrishSherpFalk_81:

(Start: 58 @49301 has 3 MA's), (Start: 62 @49307 has 1 MA's), (Start: 69 @49331 has 285 MA's), (Start: 76 @49355 has 4 MA's), (104, 49430), (133, 49559), (145, 49595),

Gene: JC27_64 Start: 41329, Stop: 41042, Start Num: 69

Candidate Starts for JC27_64:

(Start: 58 @41359 has 3 MA's), (Start: 69 @41329 has 285 MA's), (Start: 76 @41305 has 4 MA's), (143, 41065),

Gene: Jabbawokkie_91 Start: 47805, Stop: 48089, Start Num: 69

Candidate Starts for Jabbawokkie_91:

(Start: 69 @47805 has 285 MA's), (Start: 76 @47829 has 4 MA's), (133, 48033), (145, 48069),

Gene: James_82 Start: 50466, Stop: 50750, Start Num: 69

Candidate Starts for James_82:

(Start: 69 @50466 has 285 MA's), (Start: 76 @50490 has 4 MA's), (104, 50565), (133, 50694), (145, 50730),

Gene: Jant_81 Start: 47386, Stop: 47670, Start Num: 70

Candidate Starts for Jant_81:

(Start: 70 @47386 has 5 MA's), (Start: 76 @47410 has 4 MA's), (104, 47485), (133, 47614), (145, 47650),

Gene: Jarcob_81 Start: 50063, Stop: 50347, Start Num: 69

Candidate Starts for Jarcob_81:

(Start: 69 @50063 has 285 MA's), (Start: 76 @50087 has 4 MA's), (104, 50162), (133, 50291), (145, 50327),

Gene: Jinglebell_88 Start: 49768, Stop: 50088, Start Num: 69

Candidate Starts for Jinglebell_88:

(Start: 62 @49744 has 1 MA's), (Start: 69 @49768 has 285 MA's), (Start: 76 @49792 has 4 MA's), (104, 49867), (133, 49996), (145, 50032),

Gene: Jinglebell_90 Start: 50298, Stop: 50591, Start Num: 69

Candidate Starts for Jinglebell_90:

(Start: 69 @50298 has 285 MA's), (Start: 75 @50319 has 1 MA's), (81, 50334), (119, 50460), (149, 50568),

Gene: Job42_84 Start: 52418, Stop: 52702, Start Num: 69

Candidate Starts for Job42_84:

(Start: 69 @52418 has 285 MA's), (Start: 76 @52442 has 4 MA's), (79, 52451), (110, 52550), (119, 52565), (149, 52679),

Gene: Job42_81 Start: 51522, Stop: 51818, Start Num: 69

Candidate Starts for Job42_81:

(Start: 69 @51522 has 285 MA's), (Start: 75 @51543 has 1 MA's), (81, 51558), (119, 51684), (133, 51762), (145, 51798),

Gene: JoeyJr_82 Start: 50251, Stop: 50535, Start Num: 69

Candidate Starts for JoeyJr_82:

(Start: 69 @50251 has 285 MA's), (Start: 76 @50275 has 4 MA's), (104, 50350), (133, 50479), (145, 50515),

Gene: JoieB_10 Start: 3201, Stop: 3485, Start Num: 69

Candidate Starts for JoieB_10:

(Start: 62 @3177 has 1 MA's), (Start: 69 @3201 has 285 MA's), (Start: 76 @3225 has 4 MA's), (104, 3300), (133, 3429), (145, 3465),

Gene: Jorgensen_63 Start: 40720, Stop: 40448, Start Num: 69

Candidate Starts for Jorgensen_63:

(Start: 69 @40720 has 285 MA's), (Start: 75 @40699 has 1 MA's), (79, 40687), (119, 40579), (149, 40471),

Gene: Juice456_78 Start: 48213, Stop: 48485, Start Num: 69

Candidate Starts for Juice456_78:

(Start: 69 @48213 has 285 MA's), (Start: 75 @48234 has 1 MA's), (79, 48246), (119, 48354), (149, 48462),

Gene: JuicyJay_70 Start: 51347, Stop: 51054, Start Num: 69

Candidate Starts for JuicyJay_70:

(Start: 69 @51347 has 285 MA's), (Start: 75 @51326 has 1 MA's), (79, 51314), (119, 51206), (122, 51158), (130, 51146), (136, 51119), (137, 51116), (149, 51077),

Gene: JuicyJay_74 Start: 52760, Stop: 52476, Start Num: 69

Candidate Starts for JuicyJay_74:

(Start: 69 @52760 has 285 MA's), (Start: 76 @52736 has 4 MA's), (104, 52661), (133, 52532), (145, 52496),

Gene: Juniper1_80 Start: 48708, Stop: 48983, Start Num: 69

Candidate Starts for Juniper1_80:

(28, 48603), (36, 48633), (Start: 69 @48708 has 285 MA's), (Start: 75 @48729 has 1 MA's), (81, 48744), (119, 48834), (130, 48927), (132, 48945),

Gene: Kalah2_70 Start: 50919, Stop: 50635, Start Num: 69

Candidate Starts for Kalah2_70:

(Start: 69 @50919 has 285 MA's), (Start: 76 @50895 has 4 MA's), (104, 50820), (133, 50691), (145, 50655),

Gene: Kalah2_66 Start: 49506, Stop: 49213, Start Num: 69

Candidate Starts for Kalah2_66:

(Start: 69 @49506 has 285 MA's), (Start: 75 @49485 has 1 MA's), (79, 49473), (119, 49365), (122, 49317), (130, 49305), (136, 49278), (137, 49275), (149, 49236),

Gene: Karhdo_80 Start: 47607, Stop: 47906, Start Num: 69

Candidate Starts for Karhdo_80:

(Start: 69 @47607 has 285 MA's), (Start: 75 @47628 has 1 MA's), (81, 47643), (119, 47769), (149, 47883),

Gene: KashFlow_68 Start: 45901, Stop: 45623, Start Num: 69

Candidate Starts for KashFlow_68:

(53, 45940), (66, 45922), (Start: 69 @45901 has 285 MA's), (Start: 75 @45880 has 1 MA's), (79, 45868), (81, 45865), (86, 45850), (89, 45841), (133, 45679), (145, 45643),

Gene: Kenuha5_77 Start: 49369, Stop: 49653, Start Num: 70

Candidate Starts for Kenuha5_77:

(Start: 70 @49369 has 5 MA's), (Start: 76 @49393 has 4 MA's), (104, 49468), (133, 49597), (145, 49633),

Gene: Kersh_83 Start: 50793, Stop: 51092, Start Num: 69

Candidate Starts for Kersh_83:

(Start: 69 @50793 has 285 MA's), (Start: 75 @50814 has 1 MA's), (81, 50829), (119, 50955), (149, 51069),

Gene: Kingsley_85 Start: 51609, Stop: 51893, Start Num: 69

Candidate Starts for Kingsley_85:

(Start: 69 @51609 has 285 MA's), (Start: 76 @51633 has 4 MA's), (133, 51837), (145, 51873),

Gene: Klein_71 Start: 49529, Stop: 49236, Start Num: 69

Candidate Starts for Klein_71:

(Start: 69 @49529 has 285 MA's), (Start: 75 @49508 has 1 MA's), (79, 49496), (119, 49388), (122, 49340), (130, 49328), (136, 49301), (137, 49298), (149, 49259),

Gene: Klein_73 Start: 50165, Stop: 49884, Start Num: 69

Candidate Starts for Klein_73:

(Start: 69 @50165 has 285 MA's), (Start: 76 @50144 has 4 MA's), (90, 50111), (133, 49940), (145, 49904),

Gene: Koella_76 Start: 46177, Stop: 46458, Start Num: 69

Candidate Starts for Koella_76:

(Start: 69 @46177 has 285 MA's), (Start: 76 @46198 has 4 MA's), (90, 46231), (133, 46402), (145, 46438),

Gene: Krakatau_77 Start: 45727, Stop: 46011, Start Num: 69

Candidate Starts for Krakatau_77:

(Start: 69 @45727 has 285 MA's), (Start: 76 @45751 has 4 MA's), (79, 45760), (110, 45859), (119, 45874), (149, 45988),

Gene: KristaRAM_79 Start: 47927, Stop: 48211, Start Num: 69

Candidate Starts for KristaRAM_79:

(Start: 69 @47927 has 285 MA's), (Start: 76 @47951 has 4 MA's), (104, 48026), (133, 48155), (145, 48191),

Gene: Kumao_59 Start: 43007, Stop: 43291, Start Num: 69

Candidate Starts for Kumao_59:

(42, 42947), (Start: 69 @43007 has 285 MA's), (Start: 76 @43031 has 4 MA's), (104, 43106), (133, 43235), (145, 43271),

Gene: Latretium_82 Start: 48306, Stop: 48590, Start Num: 69

Candidate Starts for Latretium_82:

(Start: 69 @48306 has 285 MA's), (Start: 76 @48330 has 4 MA's), (104, 48405), (133, 48534), (145, 48570),

Gene: Leozinho_79 Start: 46485, Stop: 46781, Start Num: 69

Candidate Starts for Leozinho_79:

(Start: 69 @46485 has 285 MA's), (81, 46521), (87, 46539), (101, 46572), (109, 46614), (133, 46725), (145, 46761),

Gene: Leperchaun_80 Start: 49485, Stop: 49769, Start Num: 69

Candidate Starts for Leperchaun_80:

(Start: 69 @49485 has 285 MA's), (Start: 76 @49509 has 4 MA's), (104, 49584), (133, 49713), (145, 49749),

Gene: LilMoolah_82 Start: 49634, Stop: 49918, Start Num: 69

Candidate Starts for LilMoolah_82:

(18, 49496), (35, 49559), (Start: 69 @49634 has 285 MA's), (Start: 76 @49658 has 4 MA's), (104, 49733), (133, 49862), (145, 49898),

Gene: LilSpotty_77 Start: 45059, Stop: 45403, Start Num: 85

Candidate Starts for LilSpotty_77:

(78, 45041), (Start: 80 @45047 has 2 MA's), (Start: 85 @45059 has 1 MA's), (91, 45071), (Start: 92 @45074 has 5 MA's), (102, 45101), (104, 45116), (106, 45131), (108, 45134), (121, 45209), (133, 45284), (135, 45311), (150, 45380), (151, 45386),

Gene: LilSpotty_76 Start: 44396, Stop: 44653, Start Num: 84

Candidate Starts for LilSpotty_76:

(25, 44225), (34, 44270), (74, 44366), (Start: 84 @44396 has 5 MA's), (95, 44429), (124, 44570), (125, 44573), (126, 44576), (131, 44600), (133, 44606), (141, 44630),

Gene: Lilbit_10 Start: 3253, Stop: 3537, Start Num: 69

Candidate Starts for Lilbit_10:

(Start: 62 @3229 has 1 MA's), (Start: 69 @3253 has 285 MA's), (Start: 76 @3277 has 4 MA's), (104, 3352), (133, 3481), (145, 3517),

Gene: LittleE_77 Start: 50428, Stop: 50147, Start Num: 69

Candidate Starts for LittleE_77:

(Start: 69 @50428 has 285 MA's), (Start: 76 @50407 has 4 MA's), (104, 50332), (133, 50203), (145, 50167),

Gene: LittleE_74 Start: 49484, Stop: 49203, Start Num: 69

Candidate Starts for LittleE_74:

(10, 49685), (12, 49673), (23, 49613), (27, 49601), (41, 49547), (Start: 69 @49484 has 285 MA's), (Start: 76 @49460 has 4 MA's), (79, 49451), (94, 49418), (97, 49406), (99, 49403), (110, 49355), (119, 49340), (149, 49226),

Gene: LittleLaf_9 Start: 2982, Stop: 3266, Start Num: 69

Candidate Starts for LittleLaf_9:

(Start: 62 @2958 has 1 MA's), (Start: 69 @2982 has 285 MA's), (Start: 76 @3006 has 4 MA's), (104, 3081), (133, 3210), (145, 3246),

Gene: Llama_90 Start: 50154, Stop: 50447, Start Num: 69

Candidate Starts for Llama_90:

(Start: 69 @50154 has 285 MA's), (Start: 75 @50175 has 1 MA's), (81, 50190), (119, 50316), (149, 50424),

Gene: Llama_88 Start: 49624, Stop: 49944, Start Num: 69

Candidate Starts for Llama_88:

(Start: 62 @49600 has 1 MA's), (Start: 69 @49624 has 285 MA's), (Start: 76 @49648 has 4 MA's), (104, 49723), (133, 49852), (145, 49888),

Gene: Llij_77 Start: 46445, Stop: 46729, Start Num: 69

Candidate Starts for Llij_77:

(Start: 69 @46445 has 285 MA's), (Start: 76 @46469 has 4 MA's), (104, 46544), (133, 46673), (145, 46709),

Gene: Llij_80 Start: 47508, Stop: 47834, Start Num: 69

Candidate Starts for Llij_80:

(Start: 69 @47508 has 285 MA's), (79, 47541), (81, 47544), (91, 47571), (94, 47577), (119, 47697), (149, 47811),

Gene: LordVader_75 Start: 44278, Stop: 44562, Start Num: 69

Candidate Starts for LordVader_75:

(Start: 58 @44248 has 3 MA's), (Start: 62 @44254 has 1 MA's), (Start: 69 @44278 has 285 MA's), (Start: 76 @44302 has 4 MA's), (133, 44506), (145, 44542),

Gene: Lorde_81 Start: 45732, Stop: 46016, Start Num: 69

Candidate Starts for Lorde_81:

(Start: 69 @45732 has 285 MA's), (Start: 76 @45756 has 4 MA's), (104, 45831), (133, 45960), (145, 45996),

Gene: Lucia_80 Start: 46580, Stop: 46864, Start Num: 69

Candidate Starts for Lucia_80:

(Start: 69 @46580 has 285 MA's), (Start: 76 @46604 has 4 MA's), (104, 46679), (133, 46808), (145, 46844),

Gene: Lucky2013_69 Start: 45952, Stop: 45659, Start Num: 69

Candidate Starts for Lucky2013_69:

(Start: 69 @45952 has 285 MA's), (Start: 75 @45931 has 1 MA's), (79, 45919), (119, 45811), (122, 45763), (130, 45751), (136, 45724), (137, 45721), (149, 45682),

Gene: Lucky2013_73 Start: 47341, Stop: 47081, Start Num: 76

Candidate Starts for Lucky2013_73:

(Start: 69 @47365 has 285 MA's), (Start: 76 @47341 has 4 MA's), (104, 47266), (133, 47137), (145, 47101),

Gene: LunaBlu_84 Start: 49474, Stop: 49758, Start Num: 69

Candidate Starts for LunaBlu_84:

(Start: 69 @49474 has 285 MA's), (Start: 76 @49498 has 4 MA's), (104, 49573), (133, 49702), (145, 49738),

Gene: LunaStella_80 Start: 48469, Stop: 48825, Start Num: 69

Candidate Starts for LunaStella_80:

(48, 48427), (60, 48445), (Start: 69 @48469 has 285 MA's), (Start: 75 @48490 has 1 MA's), (79, 48502), (130, 48706), (132, 48724), (134, 48736), (146, 48778), (149, 48802),

Gene: MadMen_87 Start: 49600, Stop: 49884, Start Num: 69

Candidate Starts for MadMen_87:

(42, 49540), (Start: 69 @49600 has 285 MA's), (Start: 76 @49624 has 4 MA's), (104, 49699), (133, 49828), (145, 49864),

Gene: MadMen_79 Start: 47451, Stop: 47750, Start Num: 69

Candidate Starts for MadMen_79:

(Start: 69 @47451 has 285 MA's), (Start: 75 @47472 has 1 MA's), (81, 47487), (119, 47613), (149, 47727),

Gene: Mahavrat_81 Start: 47831, Stop: 48169, Start Num: 69

Candidate Starts for Mahavrat_81:

(28, 47726), (36, 47756), (Start: 69 @47831 has 285 MA's), (Start: 75 @47852 has 1 MA's), (81, 47867), (119, 47957), (130, 48050), (132, 48068), (134, 48080), (146, 48122), (149, 48146),

Gene: Manda_43 Start: 35798, Stop: 35514, Start Num: 69

Candidate Starts for Manda_43:

(Start: 69 @35798 has 285 MA's), (Start: 76 @35774 has 4 MA's), (104, 35699), (133, 35570), (145, 35534),

Gene: Mandlovu_81 Start: 47530, Stop: 47841, Start Num: 51

Candidate Starts for Mandlovu_81:

(40, 47503), (Start: 51 @47530 has 5 MA's), (Start: 75 @47593 has 1 MA's), (117, 47698), (149, 47818),

Gene: Mandlovu_80 Start: 47256, Stop: 47537, Start Num: 69

Candidate Starts for Mandlovu_80:

(Start: 69 @47256 has 285 MA's), (Start: 76 @47280 has 4 MA's), (79, 47289), (119, 47403), (131, 47475), (133, 47481),

Gene: Mandlovu_76 Start: 46169, Stop: 46453, Start Num: 69

Candidate Starts for Mandlovu_76:

(Start: 62 @46145 has 1 MA's), (Start: 69 @46169 has 285 MA's), (Start: 76 @46193 has 4 MA's), (104, 46268), (133, 46397), (145, 46433),

Gene: Marker_87 Start: 49400, Stop: 49684, Start Num: 69

Candidate Starts for Marker_87:

(Start: 69 @49400 has 285 MA's), (Start: 76 @49424 has 4 MA's), (104, 49499), (133, 49628), (145, 49664),

Gene: Marker_89 Start: 50064, Stop: 50420, Start Num: 75

Candidate Starts for Marker_89:

(Start: 75 @50064 has 1 MA's), (81, 50079), (91, 50103), (100, 50130), (106, 50160), (127, 50280), (140, 50355), (149, 50397),

Gene: Marleymoo_65 Start: 48325, Stop: 48032, Start Num: 69

Candidate Starts for Marleymoo_65:

(Start: 69 @48325 has 285 MA's), (Start: 75 @48304 has 1 MA's), (79, 48292), (119, 48184), (122, 48136), (130, 48124), (136, 48097), (137, 48094), (149, 48055),

Gene: Marshmallow_43 Start: 36119, Stop: 35823, Start Num: 69

Candidate Starts for Marshmallow_43:

(Start: 69 @36119 has 285 MA's), (81, 36083), (87, 36065), (101, 36032), (109, 35990), (145, 35843),

Gene: Marvin_8 Start: 2964, Stop: 3248, Start Num: 69

Candidate Starts for Marvin_8:

(Start: 62 @2940 has 1 MA's), (Start: 69 @2964 has 285 MA's), (Start: 76 @2988 has 4 MA's), (104, 3063), (133, 3192), (145, 3228),

Gene: Medindi_85 Start: 50197, Stop: 50481, Start Num: 69

Candidate Starts for Medindi_85:

(4, 49951), (7, 49966), (Start: 69 @50197 has 285 MA's), (Start: 76 @50221 has 4 MA's), (133, 50425), (145, 50461),

Gene: Medindi_89 Start: 51260, Stop: 51544, Start Num: 69

Candidate Starts for Medindi_89:

(Start: 69 @51260 has 285 MA's), (Start: 76 @51284 has 4 MA's), (79, 51293), (110, 51392), (119, 51407), (149, 51521),

Gene: MiaZeal_76 Start: 48021, Stop: 47737, Start Num: 69

Candidate Starts for MiaZeal_76:

(Start: 69 @48021 has 285 MA's), (Start: 76 @47997 has 4 MA's), (104, 47922), (133, 47793), (145, 47757),

Gene: MiaZeal_72 Start: 46608, Stop: 46255, Start Num: 69

Candidate Starts for MiaZeal_72:

(Start: 69 @46608 has 285 MA's), (Start: 75 @46587 has 1 MA's), (79, 46575), (119, 46467), (130, 46374), (132, 46356), (134, 46344), (146, 46302), (149, 46278),

Gene: MilanaBonita_77 Start: 48008, Stop: 48292, Start Num: 69

Candidate Starts for MilanaBonita_77:

(Start: 69 @48008 has 285 MA's), (Start: 76 @48032 has 4 MA's), (104, 48107), (133, 48236), (145, 48272),

Gene: MilleniumForce_82 Start: 49757, Stop: 50041, Start Num: 69

Candidate Starts for MilleniumForce_82:

(Start: 69 @49757 has 285 MA's), (Start: 76 @49781 has 4 MA's), (104, 49856), (133, 49985), (145, 50021),

Gene: Minerva_79 Start: 52268, Stop: 51984, Start Num: 69

Candidate Starts for Minerva_79:

(Start: 62 @52292 has 1 MA's), (Start: 69 @52268 has 285 MA's), (Start: 76 @52244 has 4 MA's), (104, 52169), (133, 52040), (145, 52004),

Gene: Minerva_77 Start: 51629, Stop: 51336, Start Num: 69

Candidate Starts for Minerva_77:

(Start: 69 @51629 has 285 MA's), (Start: 75 @51608 has 1 MA's), (79, 51596), (119, 51488), (122, 51440), (130, 51428), (136, 51401), (137, 51398), (149, 51359),

Gene: MinionDave_77 Start: 48491, Stop: 48775, Start Num: 69

Candidate Starts for MinionDave_77:

(Start: 69 @48491 has 285 MA's), (Start: 76 @48515 has 4 MA's), (133, 48719), (145, 48755),

Gene: Minnie_77 Start: 50537, Stop: 50821, Start Num: 69

Candidate Starts for Minnie_77:

(Start: 58 @50507 has 3 MA's), (Start: 62 @50513 has 1 MA's), (Start: 69 @50537 has 285 MA's), (Start: 76 @50561 has 4 MA's), (104, 50636), (133, 50765), (145, 50801),

Gene: Modragons_88 Start: 50142, Stop: 50435, Start Num: 69

Candidate Starts for Modragons_88:

(Start: 69 @50142 has 285 MA's), (Start: 75 @50163 has 1 MA's), (81, 50178), (119, 50304), (149, 50412),

Gene: Modragons_86 Start: 49612, Stop: 49932, Start Num: 69

Candidate Starts for Modragons_86:

(Start: 62 @49588 has 1 MA's), (Start: 69 @49612 has 285 MA's), (Start: 76 @49636 has 4 MA's), (104, 49711), (133, 49840), (145, 49876),

Gene: MooMoo_80 Start: 48107, Stop: 48433, Start Num: 69

Candidate Starts for MooMoo_80:

(Start: 69 @48107 has 285 MA's), (79, 48140), (81, 48143), (91, 48170), (94, 48176), (119, 48296), (149, 48410),

Gene: Moose_60 Start: 39923, Stop: 39675, Start Num: 92

Candidate Starts for Moose_60:

(65, 40019), (Start: 69 @39995 has 285 MA's), (77, 39965), (Start: 92 @39923 has 5 MA's), (Start: 96 @39911 has 1 MA's), (149, 39698),

Gene: Mova_80 Start: 47852, Stop: 48136, Start Num: 69

Candidate Starts for Mova_80:

(Start: 69 @47852 has 285 MA's), (Start: 76 @47876 has 4 MA's), (104, 47951), (133, 48080), (145, 48116),

Gene: Mozy_86 Start: 47832, Stop: 48131, Start Num: 70

Candidate Starts for Mozy_86:

(54, 47790), (67, 47808), (Start: 70 @47832 has 5 MA's), (Start: 75 @47853 has 1 MA's), (81, 47865), (123, 48033), (145, 48108),

Gene: Mozy_88 Start: 48337, Stop: 48621, Start Num: 69

Candidate Starts for Mozy_88:

(Start: 69 @48337 has 285 MA's), (Start: 76 @48361 has 4 MA's), (104, 48436), (133, 48565), (145, 48601),

Gene: MrGordo_63 Start: 41253, Stop: 40939, Start Num: 58

Candidate Starts for MrGordo_63:

(Start: 58 @41253 has 3 MA's), (Start: 62 @41247 has 1 MA's), (Start: 69 @41223 has 285 MA's), (Start: 76 @41199 has 4 MA's), (133, 40995), (145, 40959),

Gene: Ms6_82 Start: 45701, Stop: 45985, Start Num: 69

Candidate Starts for Ms6_82:

(Start: 69 @45701 has 285 MA's), (Start: 76 @45725 has 4 MA's), (104, 45800), (133, 45929), (145, 45965),

Gene: Mutaforma13_86 Start: 49538, Stop: 49894, Start Num: 69

Candidate Starts for Mutaforma13_86:

(48, 49496), (60, 49514), (Start: 69 @49538 has 285 MA's), (Start: 75 @49559 has 1 MA's), (130, 49775), (132, 49793), (134, 49805), (146, 49847), (149, 49871),

Gene: Mwanjiwa_84 Start: 49794, Stop: 50060, Start Num: 75

Candidate Starts for Mwanjiwa_84:

(Start: 69 @49773 has 285 MA's), (Start: 75 @49794 has 1 MA's), (82, 49809), (91, 49833), (119, 49926), (133, 50004), (145, 50040),

Gene: Myrale_44 Start: 35984, Stop: 35688, Start Num: 69

Candidate Starts for Myrale_44:

(Start: 69 @35984 has 285 MA's), (81, 35948), (87, 35930), (101, 35897), (109, 35855), (145, 35708),

Gene: Nekros_72 Start: 49247, Stop: 48963, Start Num: 69

Candidate Starts for Nekros_72:

(Start: 69 @49247 has 285 MA's), (Start: 76 @49223 has 4 MA's), (104, 49148), (133, 49019), (145, 48983),

Gene: Nekros_70 Start: 48461, Stop: 48180, Start Num: 69

Candidate Starts for Nekros_70:

(31, 48554), (39, 48530), (Start: 69 @48461 has 285 MA's), (Start: 76 @48437 has 4 MA's), (79, 48428), (94, 48395), (97, 48383), (99, 48380), (110, 48332), (119, 48317), (149, 48203),

Gene: NewHope4_84 Start: 47569, Stop: 47853, Start Num: 69

Candidate Starts for NewHope4_84:

(Start: 69 @47569 has 285 MA's), (Start: 76 @47593 has 4 MA's), (104, 47668), (133, 47797), (145, 47833),

Gene: Nibley_65 Start: 44964, Stop: 44680, Start Num: 69

Candidate Starts for Nibley_65:

(42, 45024), (Start: 69 @44964 has 285 MA's), (Start: 76 @44940 has 4 MA's), (104, 44865), (133, 44736), (145, 44700),

Gene: Nichirin_81 Start: 48986, Stop: 49306, Start Num: 69

Candidate Starts for Nichirin_81:

(Start: 62 @48962 has 1 MA's), (Start: 69 @48986 has 285 MA's), (Start: 76 @49010 has 4 MA's), (104, 49085), (133, 49214), (145, 49250),

Gene: Nichirin_83 Start: 49518, Stop: 49811, Start Num: 69

Candidate Starts for Nichirin_83:

(Start: 69 @49518 has 285 MA's), (Start: 75 @49539 has 1 MA's), (81, 49554), (119, 49680), (149, 49788),

Gene: NihilNomen_76 Start: 51713, Stop: 51429, Start Num: 69

Candidate Starts for NihilNomen_76:

(Start: 69 @51713 has 285 MA's), (Start: 76 @51689 has 4 MA's), (104, 51614), (133, 51485), (145, 51449),

Gene: NihilNomen_72 Start: 50300, Stop: 50007, Start Num: 69

Candidate Starts for NihilNomen_72:

(Start: 69 @50300 has 285 MA's), (Start: 75 @50279 has 1 MA's), (79, 50267), (119, 50159), (122, 50111), (130, 50099), (136, 50072), (137, 50069), (149, 50030),

Gene: Nimbo_74 Start: 48349, Stop: 48633, Start Num: 69

Candidate Starts for Nimbo_74:

(Start: 69 @48349 has 285 MA's), (Start: 76 @48373 has 4 MA's), (104, 48448), (133, 48577), (145, 48613),

Gene: Nitzel_78 Start: 46831, Stop: 47190, Start Num: 69

Candidate Starts for Nitzel_78:

(50, 46792), (Start: 62 @46810 has 1 MA's), (Start: 69 @46831 has 285 MA's), (Start: 76 @46855 has 4 MA's), (79, 46864), (113, 46963), (119, 46978), (130, 47071), (132, 47089), (134, 47101), (146, 47143), (149, 47167),

Gene: Nivrat_80 Start: 49507, Stop: 49791, Start Num: 69

Candidate Starts for Nivrat_80:

(18, 49369), (35, 49432), (Start: 69 @49507 has 285 MA's), (Start: 76 @49531 has 4 MA's), (104, 49606), (133, 49735), (145, 49771),

Gene: NormanBulbieJr_82 Start: 50191, Stop: 50472, Start Num: 69

Candidate Starts for NormanBulbieJr_82:

(Start: 69 @50191 has 285 MA's), (Start: 76 @50212 has 4 MA's), (90, 50245), (133, 50416), (145, 50452),

Gene: Ochi17_87 Start: 49219, Stop: 49539, Start Num: 69

Candidate Starts for Ochi17_87:

(Start: 62 @49195 has 1 MA's), (Start: 69 @49219 has 285 MA's), (Start: 76 @49243 has 4 MA's), (104, 49318), (133, 49447), (145, 49483),

Gene: Ochi17_89 Start: 49749, Stop: 50042, Start Num: 69

Candidate Starts for Ochi17_89:

(Start: 69 @49749 has 285 MA's), (Start: 75 @49770 has 1 MA's), (81, 49785), (119, 49911), (149, 50019),

Gene: Odette_70 Start: 49343, Stop: 49050, Start Num: 69

Candidate Starts for Odette_70:

(Start: 69 @49343 has 285 MA's), (Start: 75 @49322 has 1 MA's), (79, 49310), (119, 49202), (122, 49154), (130, 49142), (136, 49115), (137, 49112), (149, 49073),

Gene: Odette_74 Start: 50756, Stop: 50472, Start Num: 69

Candidate Starts for Odette_74:

(Start: 69 @50756 has 285 MA's), (Start: 76 @50732 has 4 MA's), (104, 50657), (133, 50528), (145, 50492),

Gene: OfUltron_89 Start: 49768, Stop: 50088, Start Num: 69

Candidate Starts for OfUltron_89:

(Start: 62 @49744 has 1 MA's), (Start: 69 @49768 has 285 MA's), (Start: 76 @49792 has 4 MA's), (104, 49867), (133, 49996), (145, 50032),

Gene: OfUltron_91 Start: 50298, Stop: 50591, Start Num: 69

Candidate Starts for OfUltron_91:

(Start: 69 @50298 has 285 MA's), (Start: 75 @50319 has 1 MA's), (81, 50334), (119, 50460), (149, 50568),

Gene: Ogopogo_87 Start: 48817, Stop: 49101, Start Num: 69

Candidate Starts for Ogotogo_87:

(Start: 69 @48817 has 285 MA's), (Start: 76 @48841 has 4 MA's), (104, 48916), (133, 49045), (145, 49081),

Gene: Okabe_77 Start: 45885, Stop: 46169, Start Num: 69

Candidate Starts for Okabe_77:

(Start: 69 @45885 has 285 MA's), (Start: 76 @45909 has 4 MA's), (104, 45984), (133, 46113), (145, 46149),

Gene: Oksu_86 Start: 50903, Stop: 51256, Start Num: 69

Candidate Starts for Oksu_86:

(Start: 69 @50903 has 285 MA's), (Start: 75 @50924 has 1 MA's), (79, 50936), (119, 51044), (130, 51137), (132, 51155), (134, 51167), (146, 51209), (149, 51233),

Gene: OldBen_79 Start: 49741, Stop: 50025, Start Num: 69

Candidate Starts for OldBen_79:

(Start: 69 @49741 has 285 MA's), (Start: 76 @49765 has 4 MA's), (104, 49840), (133, 49969), (145, 50005),

Gene: OlympiaSaint_81 Start: 49408, Stop: 49692, Start Num: 69

Candidate Starts for OlympiaSaint_81:

(Start: 69 @49408 has 285 MA's), (Start: 76 @49432 has 4 MA's), (104, 49507), (133, 49636), (145, 49672),

Gene: Omega_79 Start: 51648, Stop: 51367, Start Num: 69

Candidate Starts for Omega_79:

(Start: 69 @51648 has 285 MA's), (Start: 76 @51627 has 4 MA's), (104, 51552), (133, 51423), (145, 51387),

Gene: Omega_77 Start: 51219, Stop: 50938, Start Num: 69

Candidate Starts for Omega_77:

(Start: 69 @51219 has 285 MA's), (Start: 76 @51195 has 4 MA's), (79, 51186), (94, 51153), (97, 51141), (99, 51138), (119, 51075), (149, 50961),

Gene: PHappiness_82 Start: 50570, Stop: 50854, Start Num: 69

Candidate Starts for PHappiness_82:

(Start: 69 @50570 has 285 MA's), (Start: 76 @50594 has 4 MA's), (104, 50669), (133, 50798), (145, 50834),

Gene: PMC_78 Start: 47902, Stop: 48186, Start Num: 69

Candidate Starts for PMC_78:

(Start: 69 @47902 has 285 MA's), (Start: 76 @47926 has 4 MA's), (104, 48001), (133, 48130), (145, 48166),

Gene: Pacc40_73 Start: 48569, Stop: 48838, Start Num: 69

Candidate Starts for Pacc40_73:

(Start: 69 @48569 has 285 MA's), (Start: 75 @48590 has 1 MA's), (116, 48689), (117, 48695), (149, 48815),

Gene: Pepe_59 Start: 39848, Stop: 39564, Start Num: 69

Candidate Starts for Pepe_59:

(Start: 58 @39878 has 3 MA's), (Start: 62 @39872 has 1 MA's), (Start: 69 @39848 has 285 MA's), (Start: 76 @39824 has 4 MA's), (104, 39749), (133, 39620), (145, 39584),

Gene: Phaja_42 Start: 35684, Stop: 35388, Start Num: 69
Candidate Starts for Phaja_42:
(Start: 69 @35684 has 285 MA's), (81, 35648), (87, 35630), (101, 35597), (109, 35555), (145, 35408),

Gene: Phalconet_78 Start: 48031, Stop: 48315, Start Num: 69
Candidate Starts for Phalconet_78:
(Start: 69 @48031 has 285 MA's), (Start: 76 @48055 has 4 MA's), (133, 48259), (145, 48295),

Gene: Phalconet_82 Start: 49094, Stop: 49378, Start Num: 69
Candidate Starts for Phalconet_82:
(Start: 69 @49094 has 285 MA's), (Start: 76 @49118 has 4 MA's), (79, 49127), (110, 49226), (119, 49241), (149, 49355),

Gene: Phanphagia_80 Start: 49405, Stop: 49689, Start Num: 69
Candidate Starts for Phanphagia_80:
(Start: 69 @49405 has 285 MA's), (Start: 76 @49429 has 4 MA's), (104, 49504), (133, 49633), (145, 49669),

Gene: Phatniss_78 Start: 47540, Stop: 47824, Start Num: 69
Candidate Starts for Phatniss_78:
(Start: 69 @47540 has 285 MA's), (Start: 76 @47564 has 4 MA's), (104, 47639), (133, 47768), (145, 47804),

Gene: PhesterPhotato_85 Start: 49202, Stop: 49483, Start Num: 69
Candidate Starts for PhesterPhotato_85:
(Start: 69 @49202 has 285 MA's), (Start: 76 @49223 has 4 MA's), (104, 49298), (133, 49427), (145, 49463),

Gene: PhesterPhotato_89 Start: 50262, Stop: 50546, Start Num: 69
Candidate Starts for PhesterPhotato_89:
(Start: 69 @50262 has 285 MA's), (Start: 76 @50286 has 4 MA's), (79, 50295), (110, 50394), (119, 50409), (149, 50523),

Gene: Philus_84 Start: 51107, Stop: 51391, Start Num: 69
Candidate Starts for Philus_84:
(Start: 69 @51107 has 285 MA's), (Start: 76 @51131 has 4 MA's), (104, 51206), (133, 51335), (145, 51371),

Gene: Phoebus_78 Start: 52895, Stop: 52611, Start Num: 69
Candidate Starts for Phoebus_78:
(Start: 69 @52895 has 285 MA's), (Start: 76 @52871 has 4 MA's), (104, 52796), (133, 52667), (145, 52631),

Gene: Phoebus_74 Start: 51482, Stop: 51129, Start Num: 69
Candidate Starts for Phoebus_74:
(Start: 69 @51482 has 285 MA's), (Start: 75 @51461 has 1 MA's), (79, 51449), (119, 51341), (130, 51248), (132, 51230), (134, 51218), (146, 51176), (149, 51152),

Gene: Pippy_76 Start: 47591, Stop: 47887, Start Num: 69
Candidate Starts for Pippy_76:
(Start: 69 @47591 has 285 MA's), (81, 47627), (87, 47645), (101, 47678), (109, 47720), (133, 47831), (145, 47867),

Gene: Poise_9 Start: 2787, Stop: 3071, Start Num: 69

Candidate Starts for Poise_9:

(Start: 69 @2787 has 285 MA's), (Start: 76 @2811 has 4 MA's), (104, 2886), (133, 3015), (145, 3051),

Gene: Polo2Bam_89 Start: 47423, Stop: 47707, Start Num: 69

Candidate Starts for Polo2Bam_89:

(Start: 69 @47423 has 285 MA's), (Start: 76 @47447 has 4 MA's), (104, 47522), (133, 47651), (145, 47687),

Gene: PopTart_77 Start: 47157, Stop: 47441, Start Num: 69

Candidate Starts for PopTart_77:

(Start: 69 @47157 has 285 MA's), (Start: 76 @47181 has 4 MA's), (79, 47190), (110, 47289), (119, 47304), (149, 47418),

Gene: PopTart_73 Start: 46094, Stop: 46378, Start Num: 69

Candidate Starts for PopTart_73:

(Start: 62 @46070 has 1 MA's), (Start: 69 @46094 has 285 MA's), (Start: 76 @46118 has 4 MA's), (104, 46193), (133, 46322), (145, 46358),

Gene: Porcelain_71 Start: 46608, Stop: 46255, Start Num: 69

Candidate Starts for Porcelain_71:

(Start: 69 @46608 has 285 MA's), (Start: 75 @46587 has 1 MA's), (79, 46575), (119, 46467), (130, 46374), (132, 46356), (134, 46344), (146, 46302), (149, 46278),

Gene: Porcelain_75 Start: 48021, Stop: 47737, Start Num: 69

Candidate Starts for Porcelain_75:

(Start: 69 @48021 has 285 MA's), (Start: 76 @47997 has 4 MA's), (104, 47922), (133, 47793), (145, 47757),

Gene: Pound_77 Start: 53540, Stop: 53256, Start Num: 69

Candidate Starts for Pound_77:

(Start: 62 @53564 has 1 MA's), (Start: 69 @53540 has 285 MA's), (Start: 76 @53516 has 4 MA's), (104, 53441), (133, 53312), (145, 53276),

Gene: Pound_75 Start: 52901, Stop: 52608, Start Num: 69

Candidate Starts for Pound_75:

(Start: 69 @52901 has 285 MA's), (Start: 75 @52880 has 1 MA's), (79, 52868), (119, 52760), (122, 52712), (130, 52700), (136, 52673), (137, 52670), (149, 52631),

Gene: Pringar_9 Start: 2807, Stop: 3091, Start Num: 69

Candidate Starts for Pringar_9:

(Start: 62 @2783 has 1 MA's), (Start: 69 @2807 has 285 MA's), (Start: 76 @2831 has 4 MA's), (104, 2906), (133, 3035), (145, 3071),

Gene: Priscilla_84 Start: 50289, Stop: 50570, Start Num: 69

Candidate Starts for Priscilla_84:

(Start: 69 @50289 has 285 MA's), (Start: 76 @50310 has 4 MA's), (90, 50343), (133, 50514), (145, 50550),

Gene: QuickMath_80 Start: 48565, Stop: 48837, Start Num: 69

Candidate Starts for QuickMath_80:

(Start: 69 @48565 has 285 MA's), (Start: 75 @48586 has 1 MA's), (79, 48598), (119, 48706), (149, 48814),

Gene: Quico_91 Start: 51411, Stop: 51695, Start Num: 69

Candidate Starts for Quico_91:

(Start: 69 @51411 has 285 MA's), (Start: 76 @51435 has 4 MA's), (79, 51444), (110, 51543), (119, 51558), (149, 51672),

Gene: Radiance_80 Start: 49352, Stop: 49621, Start Num: 69

Candidate Starts for Radiance_80:

(55, 49322), (63, 49328), (Start: 69 @49352 has 285 MA's), (Start: 75 @49373 has 1 MA's), (116, 49472), (117, 49478), (149, 49598),

Gene: Raela_9 Start: 3191, Stop: 3475, Start Num: 69

Candidate Starts for Raela_9:

(Start: 69 @3191 has 285 MA's), (Start: 76 @3215 has 4 MA's), (104, 3290), (133, 3419), (145, 3455),

Gene: Rearden_68 Start: 46777, Stop: 46493, Start Num: 69

Candidate Starts for Rearden_68:

(Start: 69 @46777 has 285 MA's), (Start: 76 @46753 has 4 MA's), (133, 46549), (145, 46513),

Gene: Rearden_66 Start: 46135, Stop: 45818, Start Num: 69

Candidate Starts for Rearden_66:

(Start: 69 @46135 has 285 MA's), (Start: 76 @46111 has 4 MA's), (79, 46102), (94, 46069), (97, 46057), (99, 46054), (110, 46006), (119, 45991), (129, 45931), (149, 45841),

Gene: Redno2_72 Start: 48485, Stop: 48225, Start Num: 76

Candidate Starts for Redno2_72:

(Start: 69 @48509 has 285 MA's), (Start: 76 @48485 has 4 MA's), (104, 48410), (133, 48281), (145, 48245),

Gene: Redno2_68 Start: 47096, Stop: 46803, Start Num: 69

Candidate Starts for Redno2_68:

(Start: 69 @47096 has 285 MA's), (Start: 75 @47075 has 1 MA's), (79, 47063), (119, 46955), (122, 46907), (130, 46895), (136, 46868), (137, 46865), (149, 46826),

Gene: Renaud18_93 Start: 50655, Stop: 50924, Start Num: 69

Candidate Starts for Renaud18_93:

(Start: 69 @50655 has 285 MA's), (Start: 75 @50676 has 1 MA's), (81, 50691), (119, 50787), (149, 50901),

Gene: Rita_88 Start: 51756, Stop: 52040, Start Num: 69

Candidate Starts for Rita_88:

(Start: 69 @51756 has 285 MA's), (Start: 76 @51780 has 4 MA's), (104, 51855), (133, 51984), (145, 52020),

Gene: RitaG_82 Start: 50372, Stop: 50656, Start Num: 69

Candidate Starts for RitaG_82:

(Start: 69 @50372 has 285 MA's), (Start: 76 @50396 has 4 MA's), (104, 50471), (133, 50600), (145, 50636),

Gene: Rockne_82 Start: 47914, Stop: 48198, Start Num: 69

Candidate Starts for Rockne_82:

(Start: 69 @47914 has 285 MA's), (Start: 76 @47938 has 4 MA's), (104, 48013), (133, 48142), (145, 48178),

Gene: Royals2015_90 Start: 49759, Stop: 50043, Start Num: 69

Candidate Starts for Royals2015_90:

(Start: 69 @49759 has 285 MA's), (Start: 76 @49783 has 4 MA's), (79, 49792), (110, 49891), (119, 49906), (149, 50020),

Gene: Royals2015_86 Start: 48664, Stop: 48936, Start Num: 69

Candidate Starts for Royals2015_86:

(52, 48622), (64, 48640), (Start: 69 @48664 has 285 MA's), (Start: 75 @48685 has 1 MA's), (79, 48697), (119, 48805), (149, 48913),

Gene: SG4_81 Start: 49453, Stop: 49737, Start Num: 69

Candidate Starts for SG4_81:

(Start: 69 @49453 has 285 MA's), (Start: 76 @49477 has 4 MA's), (104, 49552), (133, 49681), (145, 49717),

Gene: Sabbb_83 Start: 46768, Stop: 47067, Start Num: 69

Candidate Starts for Sabbb_83:

(Start: 69 @46768 has 285 MA's), (Start: 75 @46789 has 1 MA's), (81, 46804), (119, 46930), (149, 47044),

Gene: Sandalphon_75 Start: 48522, Stop: 48806, Start Num: 69

Candidate Starts for Sandalphon_75:

(Start: 58 @48492 has 3 MA's), (Start: 62 @48498 has 1 MA's), (Start: 69 @48522 has 285 MA's), (Start: 76 @48546 has 4 MA's), (104, 48621), (133, 48750), (145, 48786),

Gene: Sarma624_80 Start: 45621, Stop: 45905, Start Num: 69

Candidate Starts for Sarma624_80:

(Start: 62 @45597 has 1 MA's), (Start: 69 @45621 has 285 MA's), (Start: 76 @45645 has 4 MA's), (104, 45720), (133, 45849), (145, 45885),

Gene: SassyB_73 Start: 46094, Stop: 46378, Start Num: 69

Candidate Starts for SassyB_73:

(Start: 62 @46070 has 1 MA's), (Start: 69 @46094 has 285 MA's), (Start: 76 @46118 has 4 MA's), (104, 46193), (133, 46322), (145, 46358),

Gene: SassyB_77 Start: 47157, Stop: 47441, Start Num: 69

Candidate Starts for SassyB_77:

(Start: 69 @47157 has 285 MA's), (Start: 76 @47181 has 4 MA's), (79, 47190), (110, 47289), (119, 47304), (149, 47418),

Gene: Schatzie_66 Start: 49090, Stop: 48797, Start Num: 69

Candidate Starts for Schatzie_66:

(Start: 69 @49090 has 285 MA's), (Start: 75 @49069 has 1 MA's), (79, 49057), (119, 48949), (122, 48901), (130, 48889), (136, 48862), (137, 48859), (149, 48820),

Gene: Schatzie_70 Start: 50503, Stop: 50219, Start Num: 69

Candidate Starts for Schatzie_70:

(Start: 69 @50503 has 285 MA's), (Start: 76 @50479 has 4 MA's), (104, 50404), (133, 50275), (145, 50239),

Gene: SeaLumen_86 Start: 47423, Stop: 47707, Start Num: 69
Candidate Starts for SeaLumen_86:
(Start: 69 @47423 has 285 MA's), (Start: 76 @47447 has 4 MA's), (104, 47522), (133, 47651), (145, 47687),

Gene: Seabastian_89 Start: 49769, Stop: 50089, Start Num: 69
Candidate Starts for Seabastian_89:
(Start: 62 @49745 has 1 MA's), (Start: 69 @49769 has 285 MA's), (Start: 76 @49793 has 4 MA's), (104, 49868), (133, 49997), (145, 50033),

Gene: Seabastian_91 Start: 50299, Stop: 50592, Start Num: 69
Candidate Starts for Seabastian_91:
(Start: 69 @50299 has 285 MA's), (Start: 75 @50320 has 1 MA's), (81, 50335), (119, 50461), (149, 50569),

Gene: Seagreen_80 Start: 49149, Stop: 49481, Start Num: 46
Candidate Starts for Seagreen_80:
(15, 49053), (Start: 46 @49149 has 1 MA's), (56, 49164), (Start: 69 @49197 has 285 MA's), (Start: 76 @49221 has 4 MA's), (133, 49425), (145, 49461),

Gene: Seanderson_61 Start: 42123, Stop: 41887, Start Num: 96
Candidate Starts for Seanderson_61:
(65, 42231), (Start: 69 @42207 has 285 MA's), (77, 42177), (Start: 92 @42135 has 5 MA's), (Start: 96 @42123 has 1 MA's), (149, 41910),

Gene: Shaboozey_69 Start: 45986, Stop: 45702, Start Num: 69
Candidate Starts for Shaboozey_69:
(Start: 69 @45986 has 285 MA's), (Start: 76 @45962 has 4 MA's), (133, 45758), (145, 45722),

Gene: ShamWow_44 Start: 36121, Stop: 35825, Start Num: 69
Candidate Starts for ShamWow_44:
(Start: 69 @36121 has 285 MA's), (81, 36085), (87, 36067), (101, 36034), (109, 35992), (145, 35845),

Gene: Shauna1_81 Start: 49655, Stop: 49939, Start Num: 69
Candidate Starts for Shauna1_81:
(Start: 69 @49655 has 285 MA's), (Start: 76 @49679 has 4 MA's), (104, 49754), (133, 49883), (145, 49919),

Gene: ShowerHandel_82 Start: 48717, Stop: 48983, Start Num: 80
Candidate Starts for ShowerHandel_82:
(Start: 80 @48717 has 2 MA's), (90, 48744), (95, 48759), (119, 48849), (133, 48927), (145, 48963),

Gene: ShroomBoi_82 Start: 49425, Stop: 49781, Start Num: 69
Candidate Starts for ShroomBoi_82:
(48, 49383), (60, 49401), (Start: 69 @49425 has 285 MA's), (Start: 75 @49446 has 1 MA's), (79, 49458), (130, 49662), (132, 49680), (134, 49692), (146, 49734), (149, 49758),

Gene: SkiPole_66 Start: 41398, Stop: 41150, Start Num: 92
Candidate Starts for SkiPole_66:
(17, 41611), (20, 41608), (21, 41605), (22, 41602), (65, 41494), (Start: 69 @41470 has 285 MA's), (77, 41440), (Start: 92 @41398 has 5 MA's), (Start: 96 @41386 has 1 MA's), (149, 41173),

Gene: SkiPole_68 Start: 41922, Stop: 41608, Start Num: 58

Candidate Starts for SkiPole_68:

(Start: 58 @41922 has 3 MA's), (Start: 62 @41916 has 1 MA's), (Start: 69 @41892 has 285 MA's), (Start: 76 @41868 has 4 MA's), (104, 41793), (133, 41664), (145, 41628),

Gene: Solon_60 Start: 40387, Stop: 40100, Start Num: 69

Candidate Starts for Solon_60:

(Start: 69 @40387 has 285 MA's), (Start: 75 @40366 has 1 MA's), (82, 40351), (91, 40327), (119, 40234), (133, 40156), (145, 40120),

Gene: Soul22_82 Start: 47187, Stop: 47471, Start Num: 69

Candidate Starts for Soul22_82:

(Start: 58 @47157 has 3 MA's), (Start: 62 @47163 has 1 MA's), (Start: 69 @47187 has 285 MA's), (Start: 76 @47211 has 4 MA's), (104, 47286), (133, 47415), (145, 47451),

Gene: Soul22_84 Start: 47805, Stop: 48131, Start Num: 69

Candidate Starts for Soul22_84:

(Start: 69 @47805 has 285 MA's), (79, 47838), (81, 47841), (91, 47868), (94, 47874), (119, 47994), (149, 48108),

Gene: Spartacus_89 Start: 52261, Stop: 52542, Start Num: 69

Candidate Starts for Spartacus_89:

(Start: 69 @52261 has 285 MA's), (Start: 76 @52285 has 4 MA's), (79, 52294), (119, 52408), (131, 52480), (133, 52486),

Gene: Spartacus_87 Start: 51565, Stop: 51846, Start Num: 69

Candidate Starts for Spartacus_87:

(Start: 69 @51565 has 285 MA's), (Start: 76 @51586 has 4 MA's), (90, 51619), (133, 51790), (145, 51826),

Gene: Spartacus_90 Start: 52535, Stop: 52846, Start Num: 51

Candidate Starts for Spartacus_90:

(Start: 51 @52535 has 5 MA's), (Start: 75 @52598 has 1 MA's), (117, 52703), (149, 52823),

Gene: Sprinklers_16 Start: 4916, Stop: 5194, Start Num: 69

Candidate Starts for Sprinklers_16:

(53, 4877), (66, 4895), (Start: 69 @4916 has 285 MA's), (Start: 75 @4937 has 1 MA's), (79, 4949), (81, 4952), (86, 4967), (89, 4976), (133, 5138), (145, 5174),

Gene: Squint_76 Start: 48140, Stop: 47856, Start Num: 69

Candidate Starts for Squint_76:

(Start: 69 @48140 has 285 MA's), (Start: 76 @48116 has 4 MA's), (104, 48041), (133, 47912), (145, 47876),

Gene: Squint_72 Start: 46727, Stop: 46374, Start Num: 69

Candidate Starts for Squint_72:

(Start: 69 @46727 has 285 MA's), (Start: 75 @46706 has 1 MA's), (79, 46694), (119, 46586), (130, 46493), (132, 46475), (134, 46463), (146, 46421), (149, 46397),

Gene: Squirty_81 Start: 52224, Stop: 52505, Start Num: 69

Candidate Starts for Squirty_81:

(Start: 69 @52224 has 285 MA's), (Start: 76 @52248 has 4 MA's), (104, 52323), (133, 52452), (141, 52476), (145, 52488), (148, 52494),

Gene: StAnnes_83 Start: 50113, Stop: 50397, Start Num: 69

Candidate Starts for StAnnes_83:

(55, 50083), (Start: 69 @50113 has 285 MA's), (Start: 76 @50137 has 4 MA's), (104, 50212), (133, 50341), (145, 50377),

Gene: StellaBean_42 Start: 35445, Stop: 35149, Start Num: 69

Candidate Starts for StellaBean_42:

(Start: 69 @35445 has 285 MA's), (81, 35409), (87, 35391), (101, 35358), (109, 35316), (145, 35169),

Gene: Strokeseat_80 Start: 47313, Stop: 47594, Start Num: 69

Candidate Starts for Strokeseat_80:

(Start: 69 @47313 has 285 MA's), (Start: 76 @47337 has 4 MA's), (79, 47346), (119, 47460), (131, 47532), (133, 47538),

Gene: Strokeseat_81 Start: 47587, Stop: 47898, Start Num: 51

Candidate Starts for Strokeseat_81:

(40, 47560), (Start: 51 @47587 has 5 MA's), (Start: 75 @47650 has 1 MA's), (117, 47755), (149, 47875),

Gene: Strokeseat_76 Start: 46226, Stop: 46510, Start Num: 69

Candidate Starts for Strokeseat_76:

(Start: 62 @46202 has 1 MA's), (Start: 69 @46226 has 285 MA's), (Start: 76 @46250 has 4 MA's), (104, 46325), (133, 46454), (145, 46490),

Gene: SuperGrey_82 Start: 51027, Stop: 51305, Start Num: 69

Candidate Starts for SuperGrey_82:

(53, 50988), (66, 51006), (Start: 69 @51027 has 285 MA's), (Start: 75 @51048 has 1 MA's), (79, 51060), (81, 51063), (86, 51078), (89, 51087), (133, 51249), (145, 51285),

Gene: Superphikiman_69 Start: 45818, Stop: 45525, Start Num: 69

Candidate Starts for Superphikiman_69:

(Start: 69 @45818 has 285 MA's), (Start: 75 @45797 has 1 MA's), (79, 45785), (119, 45677), (122, 45629), (130, 45617), (136, 45590), (137, 45587), (149, 45548),

Gene: Superphikiman_73 Start: 47231, Stop: 46947, Start Num: 69

Candidate Starts for Superphikiman_73:

(Start: 69 @47231 has 285 MA's), (Start: 76 @47207 has 4 MA's), (104, 47132), (133, 47003), (145, 46967),

Gene: SwissCheese_62 Start: 40423, Stop: 40175, Start Num: 92

Candidate Starts for SwissCheese_62:

(65, 40519), (Start: 69 @40495 has 285 MA's), (77, 40465), (Start: 92 @40423 has 5 MA's), (Start: 96 @40411 has 1 MA's), (149, 40198),

Gene: TChen_82 Start: 50420, Stop: 50776, Start Num: 69

Candidate Starts for TChen_82:

(48, 50378), (60, 50396), (Start: 69 @50420 has 285 MA's), (Start: 75 @50441 has 1 MA's), (79, 50453), (130, 50657), (132, 50675), (134, 50687), (146, 50729), (149, 50753),

Gene: Taj_92 Start: 52011, Stop: 52295, Start Num: 69

Candidate Starts for Taj_92:

(29, 51912), (Start: 69 @52011 has 285 MA's), (Start: 76 @52035 has 4 MA's), (79, 52044), (110, 52143), (119, 52158), (149, 52272),

Gene: Taj_88 Start: 50947, Stop: 51231, Start Num: 69

Candidate Starts for Taj_88:

(14, 50785), (Start: 69 @50947 has 285 MA's), (Start: 76 @50971 has 4 MA's), (104, 51046), (133, 51175), (145, 51211),

Gene: Tchotchke_76 Start: 47691, Stop: 47990, Start Num: 66

Candidate Starts for Tchotchke_76:

(53, 47673), (66, 47691), (Start: 69 @47712 has 285 MA's), (Start: 75 @47733 has 1 MA's), (79, 47745), (81, 47748), (86, 47763), (89, 47772), (133, 47934), (145, 47970),

Gene: Tesla_9 Start: 2778, Stop: 3062, Start Num: 69

Candidate Starts for Tesla_9:

(Start: 69 @2778 has 285 MA's), (Start: 76 @2802 has 4 MA's), (104, 2877), (133, 3006), (145, 3042),

Gene: ThetaBob_85 Start: 48938, Stop: 49243, Start Num: 69

Candidate Starts for ThetaBob_85:

(Start: 69 @48938 has 285 MA's), (79, 48971), (81, 48974), (91, 49001), (94, 49007), (119, 49127), (139, 49202),

Gene: ThreeRngTarjay_73 Start: 51787, Stop: 51503, Start Num: 69

Candidate Starts for ThreeRngTarjay_73:

(Start: 69 @51787 has 285 MA's), (Start: 76 @51763 has 4 MA's), (104, 51688), (133, 51559), (145, 51523),

Gene: ThreeRngTarjay_69 Start: 50376, Stop: 50083, Start Num: 69

Candidate Starts for ThreeRngTarjay_69:

(Start: 69 @50376 has 285 MA's), (Start: 75 @50355 has 1 MA's), (79, 50343), (119, 50235), (122, 50187), (130, 50175), (136, 50148), (137, 50145), (149, 50106),

Gene: Tortoise12_58 Start: 37074, Stop: 37331, Start Num: 84

Candidate Starts for Tortoise12_58:

(3, 36771), (6, 36792), (13, 36846), (34, 36948), (74, 37044), (Start: 84 @37074 has 5 MA's), (95, 37107), (124, 37248), (125, 37251), (126, 37254), (131, 37278), (133, 37284), (141, 37308),

Gene: Tortoise12_60 Start: 37645, Stop: 37935, Start Num: 72

Candidate Starts for Tortoise12_60:

(Start: 72 @37645 has 1 MA's), (83, 37675), (105, 37753), (111, 37768), (114, 37780), (119, 37798), (124, 37849), (128, 37861), (133, 37876), (141, 37900), (145, 37912), (148, 37918),

Gene: Toto_43 Start: 36121, Stop: 35825, Start Num: 69

Candidate Starts for Toto_43:

(Start: 69 @36121 has 285 MA's), (81, 36085), (87, 36067), (101, 36034), (109, 35992), (145, 35845),

Gene: Traaww1_40 Start: 34923, Stop: 34648, Start Num: 69

Candidate Starts for Traaww1_40:

(38, 34995), (47, 34971), (49, 34968), (Start: 69 @34923 has 285 MA's), (Start: 75 @34902 has 1 MA's), (79, 34890), (119, 34782), (133, 34704), (145, 34668),

Gene: Tuco_45 Start: 36629, Stop: 36333, Start Num: 69

Candidate Starts for Tuco_45:

(Start: 69 @36629 has 285 MA's), (81, 36593), (87, 36575), (101, 36542), (109, 36500), (145, 36353),

Gene: Tweety_86 Start: 51088, Stop: 51372, Start Num: 69
Candidate Starts for Tweety_86:
(Start: 69 @51088 has 285 MA's), (Start: 76 @51112 has 4 MA's), (79, 51121), (110, 51220), (119, 51235), (149, 51349),

Gene: Tweety_82 Start: 50025, Stop: 50309, Start Num: 69
Candidate Starts for Tweety_82:
(14, 49863), (Start: 69 @50025 has 285 MA's), (Start: 76 @50049 has 4 MA's), (104, 50124), (133, 50253), (145, 50289),

Gene: UncleRicky_80 Start: 47788, Stop: 48072, Start Num: 69
Candidate Starts for UncleRicky_80:
(Start: 69 @47788 has 285 MA's), (Start: 76 @47812 has 4 MA's), (104, 47887), (133, 48016), (145, 48052),

Gene: VRedHorse_86 Start: 47830, Stop: 48114, Start Num: 69
Candidate Starts for VRedHorse_86:
(Start: 62 @47806 has 1 MA's), (Start: 69 @47830 has 285 MA's), (Start: 76 @47854 has 4 MA's), (104, 47929), (133, 48058), (145, 48094),

Gene: VRedHorse_80 Start: 46368, Stop: 46637, Start Num: 69
Candidate Starts for VRedHorse_80:
(Start: 69 @46368 has 285 MA's), (Start: 75 @46389 has 1 MA's), (116, 46488), (117, 46494), (149, 46614),

Gene: Velveteen_75 Start: 45597, Stop: 45905, Start Num: 62
Candidate Starts for Velveteen_75:
(Start: 62 @45597 has 1 MA's), (Start: 69 @45621 has 285 MA's), (Start: 76 @45645 has 4 MA's), (104, 45720), (133, 45849), (145, 45885),

Gene: Violac_87 Start: 51567, Stop: 51926, Start Num: 69
Candidate Starts for Violac_87:
(Start: 69 @51567 has 285 MA's), (Start: 76 @51591 has 4 MA's), (79, 51600), (113, 51699), (119, 51714), (130, 51807), (132, 51825), (134, 51837), (146, 51879), (149, 51903),

Gene: Violac_83 Start: 50504, Stop: 50788, Start Num: 69
Candidate Starts for Violac_83:
(Start: 69 @50504 has 285 MA's), (Start: 76 @50528 has 4 MA's), (104, 50603), (133, 50732), (145, 50768),

Gene: Wachhund_81 Start: 46941, Stop: 47240, Start Num: 69
Candidate Starts for Wachhund_81:
(Start: 69 @46941 has 285 MA's), (Start: 75 @46962 has 1 MA's), (81, 46977), (119, 47103), (149, 47217),

Gene: Wanda_77 Start: 50474, Stop: 50193, Start Num: 69
Candidate Starts for Wanda_77:
(Start: 69 @50474 has 285 MA's), (Start: 76 @50453 has 4 MA's), (90, 50420), (133, 50249), (145, 50213),

Gene: Wanda_75 Start: 49838, Stop: 49545, Start Num: 69
Candidate Starts for Wanda_75:

(Start: 69 @49838 has 285 MA's), (Start: 75 @49817 has 1 MA's), (79, 49805), (119, 49697), (122, 49649), (130, 49637), (136, 49610), (137, 49607), (149, 49568),

Gene: Wee_91 Start: 52087, Stop: 52371, Start Num: 69

Candidate Starts for Wee_91:

(Start: 69 @52087 has 285 MA's), (Start: 76 @52111 has 4 MA's), (79, 52120), (110, 52219), (119, 52234), (149, 52348),

Gene: Wee_87 Start: 51023, Stop: 51307, Start Num: 69

Candidate Starts for Wee_87:

(14, 50861), (Start: 69 @51023 has 285 MA's), (Start: 76 @51047 has 4 MA's), (104, 51122), (133, 51251), (145, 51287),

Gene: Whatsapiecost_74 Start: 44329, Stop: 44613, Start Num: 69

Candidate Starts for Whatsapiecost_74:

(Start: 69 @44329 has 285 MA's), (Start: 76 @44353 has 4 MA's), (79, 44362), (119, 44476), (149, 44590),

Gene: WillSterrel_80 Start: 49364, Stop: 49648, Start Num: 69

Candidate Starts for WillSterrel_80:

(Start: 58 @49334 has 3 MA's), (Start: 62 @49340 has 1 MA's), (Start: 69 @49364 has 285 MA's), (Start: 76 @49388 has 4 MA's), (104, 49463), (133, 49592), (145, 49628),

Gene: XFactor_77 Start: 48229, Stop: 48513, Start Num: 69

Candidate Starts for XFactor_77:

(Start: 69 @48229 has 285 MA's), (Start: 76 @48253 has 4 MA's), (104, 48328), (145, 48493),

Gene: Yeet_71 Start: 50004, Stop: 49720, Start Num: 69

Candidate Starts for Yeet_71:

(Start: 69 @50004 has 285 MA's), (Start: 76 @49980 has 4 MA's), (133, 49776), (145, 49740),

Gene: Yeet_69 Start: 49362, Stop: 49069, Start Num: 69

Candidate Starts for Yeet_69:

(Start: 69 @49362 has 285 MA's), (Start: 75 @49341 has 1 MA's), (79, 49329), (119, 49221), (122, 49173), (130, 49161), (136, 49134), (137, 49131), (149, 49092),

Gene: Yoshi_92 Start: 49392, Stop: 49736, Start Num: 68

Candidate Starts for Yoshi_92:

(Start: 68 @49392 has 3 MA's), (Start: 75 @49419 has 1 MA's), (81, 49434), (119, 49524), (138, 49665), (147, 49692), (149, 49713),

Gene: Zapner_90 Start: 47899, Stop: 48183, Start Num: 69

Candidate Starts for Zapner_90:

(Start: 69 @47899 has 285 MA's), (Start: 76 @47923 has 4 MA's), (133, 48127), (145, 48163),

Gene: Zelink_73 Start: 52099, Stop: 51815, Start Num: 69

Candidate Starts for Zelink_73:

(Start: 69 @52099 has 285 MA's), (Start: 76 @52075 has 4 MA's), (104, 52000), (133, 51871), (145, 51835),

Gene: Zelink_69 Start: 50689, Stop: 50396, Start Num: 69

Candidate Starts for Zelink_69:

(Start: 69 @50689 has 285 MA's), (Start: 75 @50668 has 1 MA's), (79, 50656), (119, 50548), (122, 50500), (130, 50488), (136, 50461), (137, 50458), (149, 50419),

Gene: ZenTime222_56 Start: 39238, Stop: 39498, Start Num: 84

Candidate Starts for ZenTime222_56:

(3, 38935), (6, 38956), (13, 39010), (34, 39112), (74, 39208), (Start: 84 @39238 has 5 MA's), (95, 39271), (124, 39412), (128, 39424), (133, 39439), (141, 39463), (145, 39475), (148, 39481),

Gene: Zerg_82 Start: 49172, Stop: 49456, Start Num: 69

Candidate Starts for Zerg_82:

(Start: 62 @49148 has 1 MA's), (Start: 69 @49172 has 285 MA's), (Start: 76 @49196 has 4 MA's), (104, 49271), (133, 49400), (145, 49436),

Gene: Zeuska_63 Start: 42656, Stop: 42396, Start Num: 76

Candidate Starts for Zeuska_63:

(Start: 69 @42680 has 285 MA's), (Start: 76 @42656 has 4 MA's), (79, 42647), (119, 42533), (149, 42419),

Gene: Zizzle_86 Start: 51134, Stop: 51478, Start Num: 68

Candidate Starts for Zizzle_86:

(Start: 68 @51134 has 3 MA's), (Start: 75 @51161 has 1 MA's), (81, 51176), (119, 51266), (130, 51359), (132, 51377), (134, 51389), (146, 51431), (149, 51455),