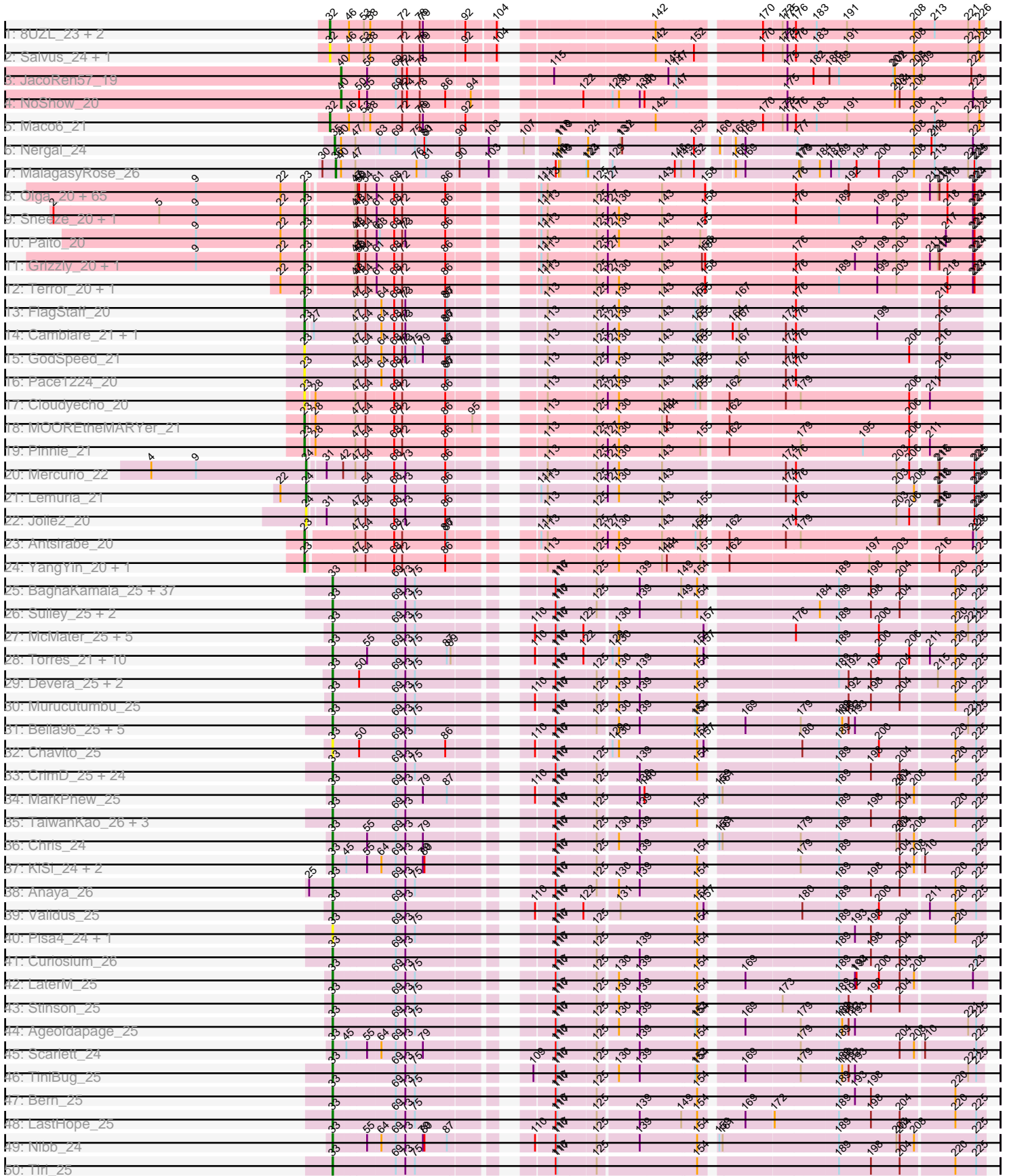
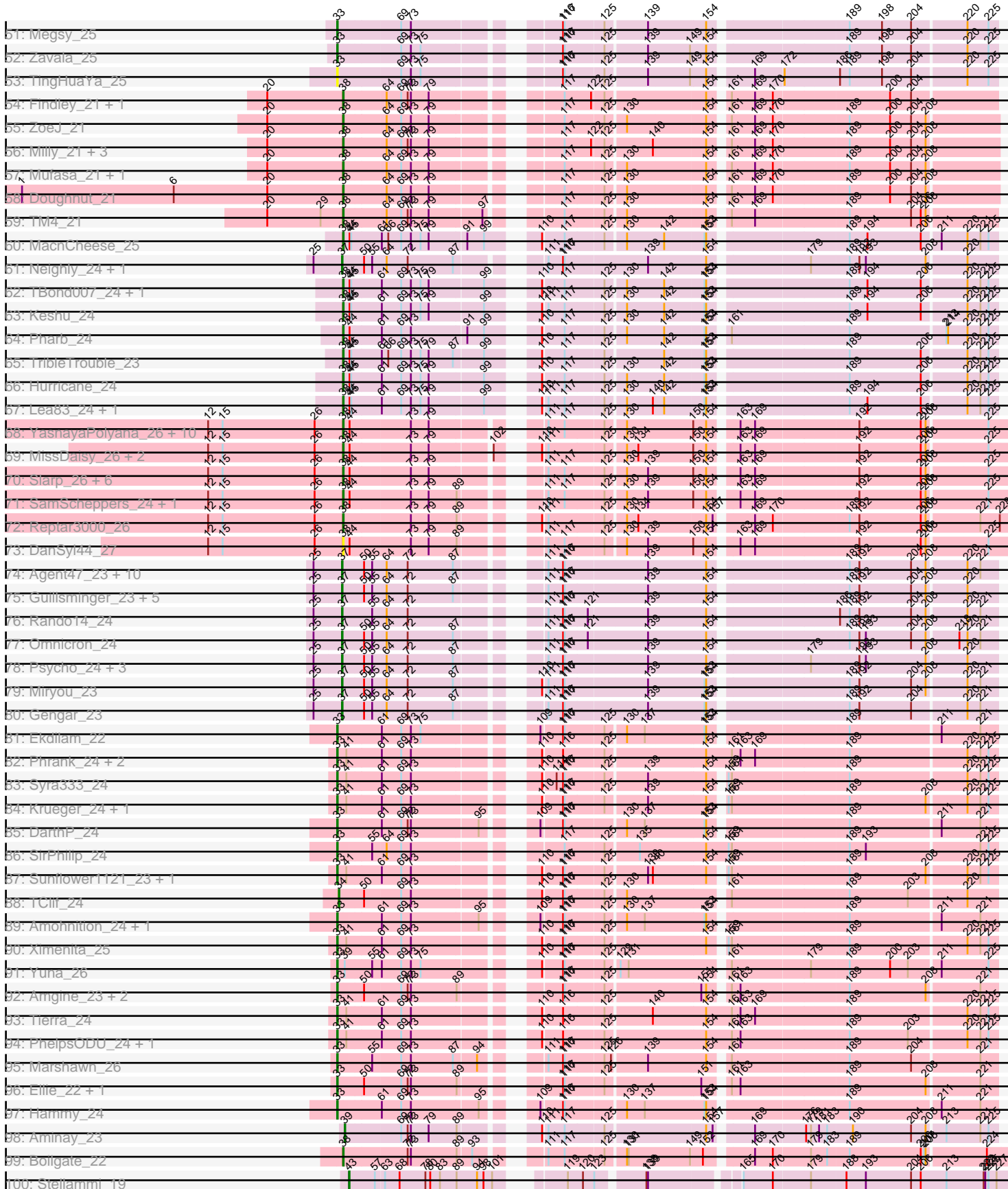


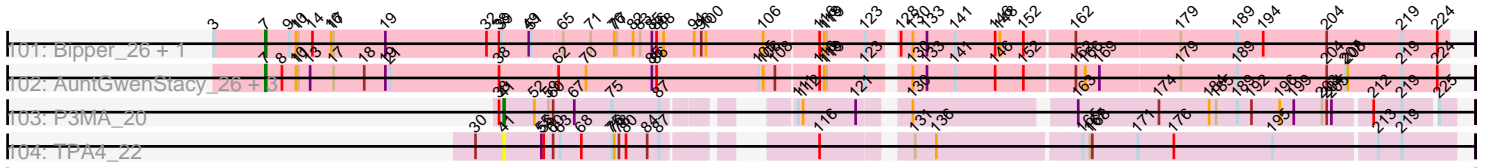
Pham 303017



Pham 303017



Pham 303017



Note: Tracks are now grouped by subcluster and scaled. Switching in subcluster is indicated by changes in track color. Track scale is now set by default to display the region 30 bp upstream of start 1 to 30 bp downstream of the last possible start. If this default region is judged to be packed too tightly with annotated starts, the track will be further scaled to only show that region of the ORF with annotated starts. This action will be indicated by adding "Zoomed" to the title. For starts, yellow indicates the location of called starts comprised solely of Glimmer/GeneMark auto-annotations, green indicates the location of called starts with at least 1 manual gene annotation.

Pham 303017 Report

This analysis was run 06/08/26 on database version 649.

Pham number 303017 has 326 members, 35 are drafts.

Phages represented in each track:

- Track 1 : 8UZL_23, FF47_23, Muddy_23
- Track 2 : Salvus_24, LongHai_24
- Track 3 : JacoRen57_19
- Track 4 : NoShow_20
- Track 5 : Maco6_21
- Track 6 : Nergal_24
- Track 7 : MalagasyRose_26
- Track 8 : Olga_20, Annihilator_20, Halo_20, DNAllI_0020, Jolene_20, Coleslaw_20, AizenPogi_20, BPs_20, Jane_20, Jeilious_20, BruceB_20, ECartman_20, Angel_20, Darionha_20, DingDing_20, Jonghyun_20, Cedasite_20, Sweets_20, Plagueis_20, Phish_20, Shaboishabazz_20, AzulaCat_20, Gideon_20, Maliketh_20, Zombie_20, Hope_20, Peeb_20, Frosty24_20, Crespo_20, Cherrybomb426_20, Chance64_20, DMoney_20, Phloodle_20, LouisV14_20, Camri_20, Renaissance_20, Aroostook_20, BQuat_20, Avrafan_20, Richarlison_20, Liefie_20, Ruriko_20, Mowgli_20, GoldenAsh_20, Kasen3_20, Marmie_20, Sizemore_20, PinkYoshi_20, Hotshotbaby7_20, OctaviousRex_20, JorRay_20, MZKinsey_20, Phreak_20, Rattrick_20, Remy19_20, CassieYates_20, Periodt_20, CLED96_20, TinaBug_20, Kareem_20, ZoMa_20, Schiebel_20, Neoh_20, TomBrady_20, Gomashi_20, Wendigo_20
- Track 9 : Sneeze_20, Rabbs_20
- Track 10 : Paito_20
- Track 11 : Grizzly_20, Barkley26_20
- Track 12 : Terror_20, Taheera_20
- Track 13 : FlagStaff_20
- Track 14 : Cambiare_21, Avocado_20
- Track 15 : GodSpeed_21
- Track 16 : Pace1224_20
- Track 17 : Cloudyecho_20
- Track 18 : MOOREtheMARYer_21
- Track 19 : Pinnie_21
- Track 20 : Mercurio_22
- Track 21 : Lemuria_21
- Track 22 : Jolie2_20
- Track 23 : Antsirabe_20
- Track 24 : YangYin_20, Stargaze_20
- Track 25 : BaghaKamala_25, Durfee_25, Boiiii_25, BarrelRoll_25, Peel_25, Apocalypse_25, Joy99_25, Belladonna_25, Padfoot_25, Topper_25, Piatt_25,

Dalmuri_25, Mynx_25, Inky_25, JAWS_25, Asayake_25, AlishaPH_25, Capricorn_25, Jeckyll_25, BGlluviae_25, CaseJules_25, CREW_25, BEEEST_25, Llorens_25, Twitch_25, Rosmarinus_25, Emerson_25, Padpat_25, Hyperbowlee_25, Homura_25, Jarvi_25, TruffulaTree_25, Lunahalos_25, Spock_25, Blizzard_25, Ramen_25, CallaLilly_25, ShiaSurprise_25

- Track 26 : Sulley_25, Angelica_25, Deby_25
- Track 27 : McMater_25, Shaobing_25, Niklas_25, Richo_25, Peanam_25, Dartin_25
- Track 28 : Torres_21, Mdavu_21, Trice_21, Nikao_21, Enkosi_21, Binglebops_21, Amelie_21, LilPharaoh_21, SgtBeansprout_21, Teejan_21, Nutello_21
- Track 29 : Devera_25, Dole_25, Illumine_25
- Track 30 : Murucutumbu_25
- Track 31 : Bella96_25, Anma_25, DartGoblin_25, DrHayes_25, Urkel_25, SamuelLPlaqson_25
- Track 32 : Chavito_25
- Track 33 : CrimD_25, YoureAdopted_24, LindNT_25, CheetoDust_25, Adonis_25, Adephagia_25, MeaningOfLife_25, HedwigODU_25, Jayhawk_25, TreyKay_25, Slimphazie_25, MacKat_25, ActinUp_25, Veliki_25, Tachez_25, Prithvi_25, Zabiza_25, Beezoo_25, Atiba_25, Rapunzel97_25, Pokerus_24, Ganymede_26, Clipper_25, QuincyRose_24, Geraldini_25
- Track 34 : MarkPhew_25
- Track 35 : TaiwanKao_26, Guanica15_25, Yunkel11_25, Efra2_25
- Track 36 : Chris_24
- Track 37 : KiSi_24, Oscar_24, LeMond_24
- Track 38 : Anaya_26
- Track 39 : Validus_25
- Track 40 : Pisa4_24, Pisa1_24
- Track 41 : Curiosium_26
- Track 42 : LaterM_25
- Track 43 : Stinson_25
- Track 44 : Ageofdapage_25
- Track 45 : Scarlett_24
- Track 46 : TiniBug_25
- Track 47 : Bern_25
- Track 48 : LastHope_25
- Track 49 : Nibb_24
- Track 50 : Tiri_25
- Track 51 : Megsy_25
- Track 52 : Zavala_25
- Track 53 : TingHuaYa_25
- Track 54 : Findley_21, Strobilo_21
- Track 55 : ZoeJ_21
- Track 56 : Milly_21, DismalStressor_21, DismalFunk_21, Marcoliusprime_21
- Track 57 : Mufasa_21, BoostSeason_21
- Track 58 : Doughnut_21
- Track 59 : TM4_21
- Track 60 : MacnCheese_25
- Track 61 : Neighly_24, Larva_24
- Track 62 : TBond007_24, Pixie_24
- Track 63 : Keshu_24
- Track 64 : Pharb_24
- Track 65 : TribbleTrouble_23
- Track 66 : Hurricane_24
- Track 67 : Lea83_24, ShedlockHolmes_24

- Track 68 : YasnayaPolyana_26, Wintermute_26, Juliette_26, JF1_26, Fionnbharth_26, Kraw_26, Y2_26, Ruthiejr_25, Eponine_26, Malthus_27, Y10_26
- Track 69 : MissDaisy_26, Bobquesha_27, Patt_26
- Track 70 : Slarp_26, Chancellor_26, Mitti_26, OmniCritical_26, Qhanda_27, Cheetobro_26, Lebo14_26
- Track 71 : SamScheppers_24, Taquito_24
- Track 72 : Reptar3000_26
- Track 73 : DanSyl44_27
- Track 74 : Agent47_23, ViviJ_22, Feyre_23, DoubleChamp_23, Thyatira_23, Waterfoul_23, Collard_23, BananenDer11_23, Kratio_22, InvictusManeo_23, LilDirt_22
- Track 75 : Guillsminger_23, SoSeph_23, OkiRoe_23, Heftyboy_23, Paola_23, Leston_23
- Track 76 : Rando14_24
- Track 77 : Omnicron_24
- Track 78 : Psycho_24, Edugator_23, AlleyCat_24, Dadosky_24
- Track 79 : Miryou_23
- Track 80 : Gengar_23
- Track 81 : Ekdilam_22
- Track 82 : Phrank_24, Bryler_24, Cain_24
- Track 83 : Syra333_24
- Track 84 : Krueger_24, Tigress9_24
- Track 85 : DarthP_24
- Track 86 : SirPhilip_24
- Track 87 : Sunflower1121_23, Shadow1_23
- Track 88 : TClif_24
- Track 89 : Amohnition_24, November_23
- Track 90 : Ximenita_25
- Track 91 : Yuna_26
- Track 92 : Amgine_23, Lavahound_23, Fefferhead_24
- Track 93 : Tierra_24
- Track 94 : PhelpsODU_24, Unicorn_24
- Track 95 : Marshawn_26
- Track 96 : Ellie_22, Applecrisp_23
- Track 97 : Hammy_24
- Track 98 : Aminay_23
- Track 99 : Boilgate_22
- Track 100 : Stellammi_19
- Track 101 : Bipper_26, Cracklewink_26
- Track 102 : AuntGwenStacy_26, Typha_26, Faiyaz_26, Hilltopfarm_26
- Track 103 : P3MA_20
- Track 104 : TPA4_22

Summary of Final Annotations (See graph section above for start numbers):

The start number called the most often in the published annotations is 33, it was called in 134 of the 291 non-draft genes in the pham.

Genes that call this "Most Annotated" start:

- ActinUp_25, Adephegia_25, Adonis_25, Ageofdapage_25, AlishaPH_25, Amelie_21, Amgine_23, Amohnition_24, Anaya_26, Angelica_25, Anma_25, Apocalypse_25, Applecrisp_23, Asayake_25, Atiba_25, BEEST_25, BGIlluviae_25, BaghaKamala_25, BarrelRoll_25, Beezoo_25, Bella96_25, Belladonna_25, Bern_25, Binglebops_21, Blizzard_25, Boiiii_25, Bryler_24, CREW_25, Cain_24, CallaLilly_25, Capricorn_25, CaseJules_25, Chavito_25, CheetoDust_25, Chris_24, Clipper_25, CrimD_25, Curiosium_26, Dalmuri_25, DartGoblin_25, DarthP_24, Dartin_25, Deby_25, Devera_25, Dole_25, DrHayes_25, Durfee_25, Efra2_25, Ekdilam_22, Ellie_22, Emerson_25, Enkosi_21, Fefferhead_24, Ganymede_26, Geraldini_25, Guanica15_25, Hammy_24, HedwigODU_25, Homura_25, Hyperbowlee_25, Illumine_25, Inky_25, JAWS_25, Jarvi_25, Jayhawk_25, Jeckyll_25, Joy99_25, KiSi_24, Krueger_24, LastHope_25, LaterM_25, Lavahound_23, LeMond_24, LilPharaoh_21, LindNT_25, Llorens_25, Lunahalos_25, MacKat_25, MarkPhew_25, Marshawn_26, McMater_25, Mdavu_21, MeaningOfLife_25, Megsy_25, Murucutumbu_25, Mynx_25, Nibb_24, Nikao_21, Niklas_25, November_23, Nutello_21, Oscar_24, Padfoot_25, Padpat_25, Peanam_25, Peel_25, PhelpsODU_24, Phrank_24, Piatt_25, Pisa1_24, Pisa4_24, Pokerus_24, Prithvi_25, QuincyRose_24, Ramen_25, Rapunzel97_25, Richo_25, Rosmarinus_25, SamuelLPlaqson_25, Scarlett_24, SgtBeansprout_21, Shadow1_23, Shaobing_25, ShiaSurprise_25, SirPhilip_24, Slimphazie_25, Spock_25, Stinson_25, Sulley_25, Sunflower1121_23, Syra333_24, Tachez_25, TaiwanKao_26, Teejan_21, Tierra_24, Tigress9_24, TingHuaYa_25, TiniBug_25, Tiri_25, Topper_25, Torres_21, TreyKay_25, Trice_21, TruffulaTree_25, Twitch_25, Unicorn_24, Urkel_25, Validus_25, Veliki_25, Ximenita_25, YoureAdopted_24, Yuna_26, Yunkel11_25, Zabiza_25, Zavala_25,

Genes that have the "Most Annotated" start but do not call it:

-

Genes that do not have the "Most Annotated" start:

- 8UZL_23, Agent47_23, AizenPogi_20, AlleyCat_24, Aminay_23, Angel_20, Annihilator_20, Antsirabe_20, Aroostook_20, AuntGwenStacy_26, Avocado_20, Avrafan_20, AzulaCat_20, BPs_20, BQuat_20, BananenDer11_23, Barkley26_20, Bipper_26, Bobquesha_27, Boilgate_22, BoostSeason_21, BruceB_20, CLED96_20, Cambiare_21, Camri_20, CassieYates_20, Cedasite_20, Chance64_20, Chancellor_26, Cheetobro_26, Cherrybomb426_20, Cloudyecho_20, Coleslaw_20, Collard_23, Cracklewink_26, Crespo_20, DMoney_20, DNAll_0020, Dadosky_24, DanSyl44_27, Darionha_20, DingDing_20, DismalFunk_21, DismalStressor_21, DoubleChamp_23, Doughnut_21, ECartman_20, Edugator_23, Eponine_26, FF47_23, Faiyaz_26, Feyre_23, Findley_21, Fionnbharth_26, FlagStaff_20, Frosty24_20, Gengar_23, Gideon_20, GodSpeed_21, GoldenAsh_20, Gomashi_20, Grizzly_20, Guillsminger_23, Halo_20, Heftyboy_23, Hilltopfarm_26, Hope_20, Hotshotbaby7_20, Hurricane_24, InvictusManeo_23, JF1_26, JacoRen57_19, Jane_20, Jeilious_20, Jolene_20, Jolie2_20, Jonghyun_20, JorRay_20, Juliette_26, Kareem_20, Kasen3_20, Keshu_24, Kratio_22, Kraw_26, Larva_24, Lea83_24, Lebo14_26, Lemuria_21, Leston_23, Liefie_20, LilDirt_22, LongHai_24, LouisV14_20, MOOREtheMARYer_21, MZKinsey_20, MacnCheese_25, Maco6_21, MalagasyRose_26, Maliketh_20, Malthus_27, Marcoliusprime_21, Marmie_20, Mercurio_22, Milly_21, Miryou_23, MissDaisy_26, Mitti_26, Mowgli_20, Muddy_23, Mufasa_21, Neighly_24, Neoh_20, Nergal_24, NoShow_20, OctaviousRex_20, OkiRoe_23, Olga_20, OmniCritical_26, Omnicron_24, P3MA_20, Pace1224_20, Paito_20, Paola_23, Patt_26, Peeb_20, Periodt_20, Pharb_24, Phish_20, Phloodle_20, Phreak_20, PinkYoshi_20, Pinnie_21, Pixie_24, Plagueis_20,

Psycho_24, Qhanda_27, Rabbs_20, Rando14_24, Rattrick_20, Remy19_20, Renaissance_20, Reptar3000_26, Richarlison_20, Ruriko_20, Ruthiejr_25, Salvus_24, SamScheppers_24, Schiebel_20, ShaboiShabazz_20, ShedlockHolmes_24, Sizemore_20, Slarp_26, Sneeze_20, SoSeph_23, Stargaze_20, Stellammi_19, Strobilo_21, Sweets_20, TBond007_24, TClif_24, TM4_21, TPA4_22, Taheera_20, Taquito_24, Terror_20, Thyatira_23, TinaBug_20, TomBrady_20, TripleTrouble_23, Typha_26, ViviJ_22, Waterfoul_23, Wendigo_20, Wintermute_26, Y10_26, Y2_26, YangYin_20, YasnayaPolyana_26, ZoMa_20, ZoeJ_21, Zombie_20,

Summary by start number:

Start 7:

- Found in 6 of 326 (1.8%) of genes in pham
- Manual Annotations of this start: 5 of 291
- Called 100.0% of time when present
- Phage (with cluster) where this start called: AuntGwenStacy_26 (Y), Bipper_26 (Y), Cracklewink_26 (Y), Faiyaz_26 (Y), Hilltopfarm_26 (Y), Typha_26 (Y),

Start 23:

- Found in 84 of 326 (25.8%) of genes in pham
- Manual Annotations of this start: 72 of 291
- Called 100.0% of time when present
- Phage (with cluster) where this start called: AizenPogi_20 (G1), Angel_20 (G1), Annihilator_20 (G1), Antsirabe_20 (G5), Aroostook_20 (G1), Avocado_20 (G2), Avrafan_20 (G1), AzulaCat_20 (G1), BPs_20 (G1), BQuat_20 (G1), Barkley26_20 (G1), BruceB_20 (G1), CLED96_20 (G1), Cambiare_21 (G2), Camri_20 (G1), CassieYates_20 (G1), Cedasite_20 (G1), Chance64_20 (G1), Cherrybomb426_20 (G1), Cloudyecho_20 (G3), Coleslaw_20 (G1), Crespo_20 (G1), DMoney_20 (G1), DNAll_0020 (G1), Darionha_20 (G1), DingDing_20 (G1), ECartman_20 (G1), FlagStaff_20 (G2), Frosty24_20 (G1), Gideon_20 (G1), GodSpeed_21 (G2), GoldenAsh_20 (G1), Gomashi_20 (G1), Grizzly_20 (G1), Halo_20 (G1), Hope_20 (G1), Hotshotbaby7_20 (G1), Jane_20 (G1), Jeilious_20 (G), Jolene_20 (G1), Jonghyun_20 (G1), JorRay_20 (G1), Kareem_20 (G1), Kasen3_20 (G1), Liefie_20 (G1), LouisV14_20 (G1), MOOREtheMARYer_21 (G3), MZKinsey_20 (G1), Maliketh_20 (G1), Marmie_20 (G1), Mowgli_20 (G1), Neoh_20 (G), OctaviousRex_20 (G1), Olga_20 (G1), Pace1224_20 (G2), Paito_20 (G1), Peeb_20 (G1), Periodt_20 (G1), Phish_20 (G1), Phloodle_20 (G1), Phreak_20 (G1), PinkYoshi_20 (G1), Pinnie_21 (G3), Plagueis_20 (G1), Rabbs_20 (G1), Rattrick_20 (G1), Remy19_20 (G1), Renaissance_20 (G1), Richarlison_20 (G1), Ruriko_20 (G1), Schiebel_20 (G1), ShaboiShabazz_20 (G1), Sizemore_20 (G1), Sneeze_20 (G1), Stargaze_20 (G5), Sweets_20 (G1), Taheera_20 (G1), Terror_20 (G1), TinaBug_20 (G1), TomBrady_20 (G1), Wendigo_20 (G1), YangYin_20 (G5), ZoMa_20 (G1), Zombie_20 (G1),

Start 24:

- Found in 3 of 326 (0.9%) of genes in pham
- Manual Annotations of this start: 2 of 291
- Called 100.0% of time when present
- Phage (with cluster) where this start called: Jolie2_20 (G4), Lemuria_21 (G4), Mercurio_22 (G4),

Start 32:

- Found in 8 of 326 (2.5%) of genes in pham

- Manual Annotations of this start: 2 of 291
- Called 75.0% of time when present
- Phage (with cluster) where this start called: 8UZL_23 (AB), FF47_23 (AB), LongHai_24 (AB), Maco6_21 (AB), Muddy_23 (AB), Salvus_24 (AB),

Start 33:

- Found in 145 of 326 (44.5%) of genes in pham
- Manual Annotations of this start: 134 of 291
- Called 100.0% of time when present
- Phage (with cluster) where this start called: ActinUp_25 (K1), Adephagia_25 (K1), Adonis_25 (K1), Ageofdapage_25 (K1), AlishaPH_25 (K1), Amelie_21 (K1), Amgine_23 (K6), Amohndition_24 (K6), Anaya_26 (K1), Angelica_25 (K1), Anma_25 (K1), Apocalypse_25 (K1), Applecrisp_23 (K6), Asayake_25 (K1), Atiba_25 (K1), BEEST_25 (K1), BGlluviae_25 (K1), BaghaKamala_25 (K1), BarrelRoll_25 (K1), Beezoo_25 (K1), Bella96_25 (K1), Belladonna_25 (K1), Bern_25 (K1), Biglebops_21 (K1), Blizzard_25 (K1), Boiiii_25 (K1), Bryler_24 (K6), CREW_25 (K1), Cain_24 (K6), CallaLilly_25 (K1), Capricorn_25 (K1), CaseJules_25 (K1), Chavito_25 (K1), CheetoDust_25 (K1), Chris_24 (K1), Clipper_25 (K1), CrimD_25 (K1), Curiosium_26 (K1), Dalmuri_25 (K1), DartGoblin_25 (K1), DARTH_24 (K6), Dartin_25 (K1), Deby_25 (K1), Devera_25 (K1), Dole_25 (K1), DrHayes_25 (K1), Durfee_25 (K1), Efra2_25 (K1), Ekdilam_22 (K6), Ellie_22 (K6), Emerson_25 (K1), Enkosi_21 (K1), Fefferhead_24 (K6), Ganymede_26 (K1), Geraldini_25 (K1), Guanica15_25 (K1), Hammy_24 (K6), HedwigODU_25 (K1), Homura_25 (K1), Hyperbowlee_25 (K1), Illumine_25 (K1), Inky_25 (K1), JAWS_25 (K1), Jarvi_25 (K1), Jayhawk_25 (K1), Jeckyll_25 (K1), Joy99_25 (K1), KiSi_24 (K1), Krueger_24 (K6), LastHope_25 (K1), LaterM_25 (K1), Lavahound_23 (K6), LeMond_24 (K1), LilPharaoh_21 (K1), LindNT_25 (K1), Llorens_25 (K1), Lunahalos_25 (K1), MacKat_25 (K1), MarkPhew_25 (K1), Marshawn_26 (K6), McMater_25 (K1), Mdavu_21 (K1), MeaningOfLife_25 (K1), Megsy_25 (K1), Murucutumbu_25 (K1), Mynx_25 (K1), Nibb_24 (K1), Nikao_21 (K1), Niklas_25 (K1), November_23 (K6), Nutello_21 (K1), Oscar_24 (K1), Padfoot_25 (K1), Padpat_25 (K1), Peanam_25 (K1), Peel_25 (K1), PhelpsODU_24 (K6), Phrank_24 (K6), Piatt_25 (K1), Pisa1_24 (K1), Pisa4_24 (K1), Pokerus_24 (K1), Prithvi_25 (K1), QuincyRose_24 (K1), Ramen_25 (K1), Rapunzel97_25 (K1), Richo_25 (K1), Rosmarinus_25 (K1), SamuelLPlaqson_25 (K1), Scarlett_24 (K1), SgtBeansprout_21 (K1), Shadow1_23 (K6), Shaobing_25 (K1), ShiaSurprise_25 (K1), SirPhilip_24 (K6), Slimphazie_25 (K1), Spock_25 (K1), Stinson_25 (K1), Sulley_25 (K1), Sunflower1121_23 (K6), Syra333_24 (K6), Tachez_25 (K1), TaiwanKao_26 (K1), Teejan_21 (K1), Tierra_24 (K6), Tigress9_24 (K6), TingHuaYa_25 (K1), TiniBug_25 (K1), Tiri_25 (K1), Topper_25 (K1), Torres_21 (K1), TreyKay_25 (K1), Trice_21 (K1), TruffulaTree_25 (K1), Twitch_25 (K1), Unicorn_24 (K6), Urkel_25 (K1), Validus_25 (K1), Veliki_25 (K1), Ximenita_25 (K6), YoureAdopted_24 (K1), Yuna_26 (K6), Yunkel11_25 (K1), Zabiza_25 (K1), Zavala_25 (K1),

Start 34:

- Found in 1 of 326 (0.3%) of genes in pham
- Manual Annotations of this start: 1 of 291
- Called 100.0% of time when present
- Phage (with cluster) where this start called: TClif_24 (K6),

Start 35:

- Found in 1 of 326 (0.3%) of genes in pham
- Manual Annotations of this start: 1 of 291

- Called 100.0% of time when present
- Phage (with cluster) where this start called: Nergal_24 (AG),

Start 36:

- Found in 1 of 326 (0.3%) of genes in pham
- Manual Annotations of this start: 1 of 291
- Called 100.0% of time when present
- Phage (with cluster) where this start called: MalagasyRose_26 (AG),

Start 37:

- Found in 27 of 326 (8.3%) of genes in pham
- Manual Annotations of this start: 25 of 291
- Called 100.0% of time when present
- Phage (with cluster) where this start called: Agent47_23 (K5), AlleyCat_24 (K5), BananenDer11_23 (K5), Collard_23 (K5), Dadosky_24 (K5), DoubleChamp_23 (K5), Edugator_23 (K5), Feyre_23 (K5), Gengar_23 (K5), Guillsminger_23 (K5), Heftyboy_23 (K5), InvictusManeo_23 (K5), Kratio_22 (K5), Larva_24 (K5), Leston_23 (K5), LilDirt_22 (K5), Miryou_23 (K5), Neighly_24 (K3), OkiRoe_23 (K5), Omnicron_24 (K5), Paola_23 (K5), Psycho_24 (K5), Rando14_24 (K5), SoSeph_23 (K5), Thyatira_23 (K5), ViviJ_22 (K5), Waterfoul_23 (K5),

Start 38:

- Found in 53 of 326 (16.3%) of genes in pham
- Manual Annotations of this start: 43 of 291
- Called 86.8% of time when present
- Phage (with cluster) where this start called: Bobquesha_27 (K4), Boilgate_22 (K8), BoostSeason_21 (K2), Chancellor_26 (K4), Cheetobro_26 (K4), DanSyl44_27 (K4), DismalFunk_21 (K2), DismalStressor_21 (K2), Doughnut_21 (K2), Eponine_26 (K4), Findley_21 (K2), Fionnbharth_26 (K4), Hurricane_24 (K3), JF1_26 (K4), Juliette_26 (K4), Keshu_24 (K3), Kraw_26 (K4), Lea83_24 (K3), Lebo14_26 (K4), MacnCheese_25 (K3), Malthus_27 (K4), Marcoliusprime_21 (K2), Milly_21 (K2), MissDaisy_26 (K4), Mitti_26 (K4), Mufasa_21 (K2), OmniCritical_26 (K4), Patt_26 (K4), Pharb_24 (K3), Pixie_24 (K3), Qhanda_27 (K4), Reptar3000_26 (K4), Ruthiejr_25 (K4), SamScheppers_24 (K4), ShedlockHolmes_24 (K3), Slarp_26 (K4), Strobilo_21 (K2), TBond007_24 (K3), TM4_21 (K2), Taquito_24 (K4), TripleTrouble_23 (K3), Wintermute_26 (K4), Y10_26 (K4), Y2_26 (K4), YasnayaPolyana_26 (K4), ZoeJ_21 (K2),

Start 39:

- Found in 4 of 326 (1.2%) of genes in pham
- Manual Annotations of this start: 1 of 291
- Called 25.0% of time when present
- Phage (with cluster) where this start called: Aminay_23 (K7),

Start 40:

- Found in 4 of 326 (1.2%) of genes in pham
- Manual Annotations of this start: 2 of 291
- Called 50.0% of time when present
- Phage (with cluster) where this start called: JacoRen57_19 (AB), NoShow_20 (AB),

Start 41:

- Found in 14 of 326 (4.3%) of genes in pham
- Manual Annotations of this start: 1 of 291

- Called 14.3% of time when present
- Phage (with cluster) where this start called: P3MA_20 (singleton), TPA4_22 (singleton),

Start 43:

- Found in 1 of 326 (0.3%) of genes in pham
- Manual Annotations of this start: 1 of 291
- Called 100.0% of time when present
- Phage (with cluster) where this start called: Stellammi_19 (UNK),

Summary by clusters:

There are 19 clusters represented in this pham: G5, AB, G3, G1, AG, UNK, G, singleton, K3, K2, K1, G4, K7, K6, K5, K4, Y, K8, G2,

Info for manual annotations of cluster AB:

- Start number 32 was manually annotated 2 times for cluster AB.
- Start number 40 was manually annotated 2 times for cluster AB.

Info for manual annotations of cluster AG:

- Start number 35 was manually annotated 1 time for cluster AG.
- Start number 36 was manually annotated 1 time for cluster AG.

Info for manual annotations of cluster G1:

- Start number 23 was manually annotated 65 times for cluster G1.

Info for manual annotations of cluster G2:

- Start number 23 was manually annotated 3 times for cluster G2.

Info for manual annotations of cluster G3:

- Start number 23 was manually annotated 2 times for cluster G3.

Info for manual annotations of cluster G4:

- Start number 24 was manually annotated 2 times for cluster G4.

Info for manual annotations of cluster G5:

- Start number 23 was manually annotated 2 times for cluster G5.

Info for manual annotations of cluster K1:

- Start number 33 was manually annotated 109 times for cluster K1.

Info for manual annotations of cluster K2:

- Start number 38 was manually annotated 11 times for cluster K2.

Info for manual annotations of cluster K3:

- Start number 38 was manually annotated 9 times for cluster K3.

Info for manual annotations of cluster K4:

- Start number 38 was manually annotated 22 times for cluster K4.

Info for manual annotations of cluster K5:

- Start number 37 was manually annotated 25 times for cluster K5.

Info for manual annotations of cluster K6:

- Start number 33 was manually annotated 25 times for cluster K6.
- Start number 34 was manually annotated 1 time for cluster K6.

Info for manual annotations of cluster K7:

- Start number 39 was manually annotated 1 time for cluster K7.

Info for manual annotations of cluster K8:

- Start number 38 was manually annotated 1 time for cluster K8.

Info for manual annotations of cluster UNK:

- Start number 43 was manually annotated 1 time for cluster UNK.

Info for manual annotations of cluster Y:

- Start number 7 was manually annotated 5 times for cluster Y.

Gene Information:

Gene: 8UZL_23 Start: 18295, Stop: 19395, Start Num: 32

Candidate Starts for 8UZL_23:

(Start: 32 @18295 has 2 MA's), (46, 18331), (53, 18358), (58, 18370), (72, 18427), (78, 18460), (79, 18466), (92, 18538), (104, 18586), (142, 18817), (170, 18994), (173, 19027), (175, 19036), (176, 19051), (183, 19087), (191, 19141), (208, 19267), (213, 19306), (221, 19366), (226, 19387),

Gene: ActinUp_25 Start: 19483, Stop: 20565, Start Num: 33

Candidate Starts for ActinUp_25:

(Start: 33 @19483 has 134 MA's), (69, 19591), (73, 19609), (75, 19627), (116, 19822), (117, 19825), (125, 19894), (139, 19966), (154, 20068), (189, 20302), (198, 20362), (204, 20416), (220, 20509), (225, 20548),

Gene: Adephagia_25 Start: 19480, Stop: 20562, Start Num: 33

Candidate Starts for Adephagia_25:

(Start: 33 @19480 has 134 MA's), (69, 19588), (73, 19606), (75, 19624), (116, 19819), (117, 19822), (125, 19891), (139, 19963), (154, 20065), (189, 20299), (198, 20359), (204, 20413), (220, 20506), (225, 20545),

Gene: Adonis_25 Start: 19486, Stop: 20568, Start Num: 33

Candidate Starts for Adonis_25:

(Start: 33 @19486 has 134 MA's), (69, 19594), (73, 19612), (75, 19630), (116, 19825), (117, 19828), (125, 19897), (139, 19969), (154, 20071), (189, 20305), (198, 20365), (204, 20419), (220, 20512), (225, 20551),

Gene: Agent47_23 Start: 19870, Stop: 20955, Start Num: 37

Candidate Starts for Agent47_23:

(25, 19819), (Start: 37 @19870 has 25 MA's), (50, 19906), (55, 19921), (64, 19945), (72, 19984), (87, 20068), (111, 20179), (116, 20203), (117, 20206), (139, 20353), (154, 20458), (189, 20692), (192, 20710), (204, 20806), (208, 20833), (220, 20899), (221, 20923),

Gene: Ageofdapage_25 Start: 19416, Stop: 20498, Start Num: 33

Candidate Starts for Ageofdapage_25:

(Start: 33 @19416 has 134 MA's), (69, 19524), (73, 19542), (75, 19560), (116, 19755), (117, 19758), (125, 19827), (130, 19860), (139, 19899), (153, 19998), (154, 20001), (169, 20070), (179, 20169), (189, 20235), (190, 20241), (192, 20253), (193, 20265), (221, 20469), (225, 20484),

Gene: AizenPogi_20 Start: 18861, Stop: 19997, Start Num: 23

Candidate Starts for AizenPogi_20:

(9, 18657), (22, 18816), (Start: 23 @18861 has 72 MA's), (47, 18939), (48, 18942), (50, 18945), (54, 18957), (61, 18975), (68, 19008), (72, 19023), (86, 19104), (111, 19218), (113, 19230), (125, 19317), (127, 19338), (143, 19434), (158, 19512), (176, 19665), (192, 19758), (203, 19848), (211, 19902), (215, 19917), (216, 19920), (218, 19935), (223, 19980), (224, 19983),

Gene: AlishaPH_25 Start: 19473, Stop: 20555, Start Num: 33

Candidate Starts for AlishaPH_25:

(Start: 33 @19473 has 134 MA's), (69, 19581), (73, 19599), (75, 19617), (116, 19812), (117, 19815), (125, 19884), (139, 19956), (149, 20031), (154, 20058), (189, 20292), (198, 20352), (204, 20406), (220, 20499), (225, 20538),

Gene: AlleyCat_24 Start: 19807, Stop: 20892, Start Num: 37

Candidate Starts for AlleyCat_24:

(25, 19756), (Start: 37 @19807 has 25 MA's), (50, 19843), (55, 19858), (64, 19882), (72, 19921), (87, 20005), (111, 20116), (116, 20140), (117, 20143), (139, 20290), (154, 20395), (179, 20563), (192, 20647), (193, 20659), (208, 20770), (220, 20836),

Gene: Amelie_21 Start: 19023, Stop: 20105, Start Num: 33

Candidate Starts for Amelie_21:

(Start: 33 @19023 has 134 MA's), (55, 19080), (69, 19131), (73, 19149), (75, 19167), (87, 19227), (89, 19233), (110, 19332), (116, 19362), (117, 19365), (122, 19413), (129, 19455), (130, 19467), (154, 19608), (157, 19620), (189, 19842), (200, 19917), (206, 19974), (211, 20004), (220, 20049), (225, 20088),

Gene: Amgine_23 Start: 19572, Stop: 20654, Start Num: 33

Candidate Starts for Amgine_23:

(Start: 33 @19572 has 134 MA's), (50, 19614), (69, 19680), (72, 19692), (73, 19698), (89, 19782), (116, 19911), (117, 19914), (125, 19983), (151, 20148), (154, 20157), (161, 20184), (163, 20199), (189, 20391), (208, 20532), (221, 20622),

Gene: Aminay_23 Start: 19702, Stop: 20775, Start Num: 39

Candidate Starts for Aminay_23:

(Start: 39 @19702 has 1 MA's), (69, 19801), (72, 19813), (73, 19819), (79, 19852), (89, 19903), (110, 20002), (111, 20008), (117, 20035), (125, 20104), (154, 20278), (157, 20290), (169, 20347), (176, 20437), (179, 20446), (181, 20458), (183, 20473), (190, 20518), (204, 20626), (208, 20653), (213, 20683), (221, 20743), (225, 20758),

Gene: Amohnition_24 Start: 19971, Stop: 21053, Start Num: 33

Candidate Starts for Amohnition_24:

(Start: 33 @19971 has 134 MA's), (61, 20043), (69, 20079), (73, 20097), (95, 20217), (109, 20277), (116, 20310), (117, 20313), (125, 20382), (130, 20415), (137, 20448), (153, 20553), (154, 20556), (189, 20790), (211, 20952), (221, 21021),

Gene: Anaya_26 Start: 19499, Stop: 20581, Start Num: 33

Candidate Starts for Anaya_26:

(25, 19457), (Start: 33 @19499 has 134 MA's), (69, 19607), (73, 19625), (75, 19643), (116, 19838), (117, 19841), (125, 19910), (130, 19943), (139, 19982), (154, 20084), (189, 20318), (198, 20378),

(204, 20432), (220, 20525), (225, 20564),

Gene: Angel_20 Start: 18861, Stop: 19997, Start Num: 23

Candidate Starts for Angel_20:

(9, 18657), (22, 18816), (Start: 23 @18861 has 72 MA's), (47, 18939), (48, 18942), (50, 18945), (54, 18957), (61, 18975), (68, 19008), (72, 19023), (86, 19104), (111, 19218), (113, 19230), (125, 19317), (127, 19338), (143, 19434), (158, 19512), (176, 19665), (192, 19758), (203, 19848), (211, 19902), (215, 19917), (216, 19920), (218, 19935), (223, 19980), (224, 19983),

Gene: Angelica_25 Start: 19448, Stop: 20530, Start Num: 33

Candidate Starts for Angelica_25:

(Start: 33 @19448 has 134 MA's), (69, 19556), (73, 19574), (75, 19592), (116, 19787), (117, 19790), (125, 19859), (139, 19931), (149, 20006), (154, 20033), (184, 20234), (189, 20267), (198, 20327), (204, 20381), (220, 20474), (225, 20513),

Gene: Anma_25 Start: 19428, Stop: 20510, Start Num: 33

Candidate Starts for Anma_25:

(Start: 33 @19428 has 134 MA's), (69, 19536), (73, 19554), (75, 19572), (116, 19767), (117, 19770), (125, 19839), (130, 19872), (139, 19911), (153, 20010), (154, 20013), (169, 20082), (179, 20181), (189, 20247), (190, 20253), (192, 20265), (193, 20277), (221, 20481), (225, 20496),

Gene: Annihilator_20 Start: 18852, Stop: 19988, Start Num: 23

Candidate Starts for Annihilator_20:

(9, 18648), (22, 18807), (Start: 23 @18852 has 72 MA's), (47, 18930), (48, 18933), (50, 18936), (54, 18948), (61, 18966), (68, 18999), (72, 19014), (86, 19095), (111, 19209), (113, 19221), (125, 19308), (127, 19329), (143, 19425), (158, 19503), (176, 19656), (192, 19749), (203, 19839), (211, 19893), (215, 19908), (216, 19911), (218, 19926), (223, 19971), (224, 19974),

Gene: Antsirabe_20 Start: 19236, Stop: 20375, Start Num: 23

Candidate Starts for Antsirabe_20:

(Start: 23 @19236 has 72 MA's), (47, 19317), (54, 19335), (68, 19386), (72, 19401), (86, 19482), (87, 19485), (111, 19596), (113, 19608), (125, 19695), (127, 19716), (130, 19737), (143, 19812), (153, 19872), (155, 19881), (162, 19923), (174, 20025), (179, 20052), (223, 20358), (225, 20364),

Gene: Apocalypse_25 Start: 19451, Stop: 20533, Start Num: 33

Candidate Starts for Apocalypse_25:

(Start: 33 @19451 has 134 MA's), (69, 19559), (73, 19577), (75, 19595), (116, 19790), (117, 19793), (125, 19862), (139, 19934), (149, 20009), (154, 20036), (189, 20270), (198, 20330), (204, 20384), (220, 20477), (225, 20516),

Gene: Applecrisp_23 Start: 19986, Stop: 21068, Start Num: 33

Candidate Starts for Applecrisp_23:

(Start: 33 @19986 has 134 MA's), (50, 20028), (69, 20094), (72, 20106), (73, 20112), (89, 20196), (116, 20325), (117, 20328), (125, 20397), (151, 20562), (161, 20598), (163, 20613), (189, 20805), (208, 20946), (221, 21036),

Gene: Aroostook_20 Start: 18861, Stop: 19997, Start Num: 23

Candidate Starts for Aroostook_20:

(9, 18657), (22, 18816), (Start: 23 @18861 has 72 MA's), (47, 18939), (48, 18942), (50, 18945), (54, 18957), (61, 18975), (68, 19008), (72, 19023), (86, 19104), (111, 19218), (113, 19230), (125, 19317), (127, 19338), (143, 19434), (158, 19512), (176, 19665), (192, 19758), (203, 19848), (211, 19902), (215, 19917), (216, 19920), (218, 19935), (223, 19980), (224, 19983),

Gene: Asayake_25 Start: 19514, Stop: 20596, Start Num: 33

Candidate Starts for Asayake_25:

(Start: 33 @19514 has 134 MA's), (69, 19622), (73, 19640), (75, 19658), (116, 19853), (117, 19856), (125, 19925), (139, 19997), (149, 20072), (154, 20099), (189, 20333), (198, 20393), (204, 20447), (220, 20540), (225, 20579),

Gene: Atiba_25 Start: 19443, Stop: 20525, Start Num: 33

Candidate Starts for Atiba_25:

(Start: 33 @19443 has 134 MA's), (69, 19551), (73, 19569), (75, 19587), (116, 19782), (117, 19785), (125, 19854), (139, 19926), (154, 20028), (189, 20262), (198, 20322), (204, 20376), (220, 20469), (225, 20508),

Gene: AuntGwenStacy_26 Start: 21990, Stop: 23429, Start Num: 7

Candidate Starts for AuntGwenStacy_26:

(Start: 7 @21990 has 5 MA's), (8, 22011), (10, 22029), (11, 22032), (13, 22047), (17, 22077), (18, 22116), (19, 22143), (21, 22149), (Start: 38 @22287 has 43 MA's), (62, 22356), (70, 22389), (85, 22473), (86, 22479), (105, 22608), (106, 22614), (108, 22629), (116, 22677), (118, 22683), (119, 22686), (123, 22734), (130, 22773), (133, 22791), (141, 22824), (146, 22875), (152, 22908), (162, 22968), (166, 22980), (169, 22998), (179, 23097), (189, 23163), (204, 23277), (207, 23301), (208, 23304), (219, 23373), (224, 23415),

Gene: Avocado_20 Start: 19180, Stop: 20325, Start Num: 23

Candidate Starts for Avocado_20:

(Start: 23 @19180 has 72 MA's), (27, 19192), (47, 19267), (54, 19285), (64, 19312), (68, 19336), (72, 19351), (73, 19357), (86, 19432), (87, 19435), (113, 19558), (125, 19645), (127, 19666), (130, 19687), (143, 19762), (153, 19822), (155, 19831), (164, 19879), (167, 19891), (174, 19975), (176, 19993), (199, 20140), (216, 20248),

Gene: Avrafan_20 Start: 18861, Stop: 19997, Start Num: 23

Candidate Starts for Avrafan_20:

(9, 18657), (22, 18816), (Start: 23 @18861 has 72 MA's), (47, 18939), (48, 18942), (50, 18945), (54, 18957), (61, 18975), (68, 19008), (72, 19023), (86, 19104), (111, 19218), (113, 19230), (125, 19317), (127, 19338), (143, 19434), (158, 19512), (176, 19665), (192, 19758), (203, 19848), (211, 19902), (215, 19917), (216, 19920), (218, 19935), (223, 19980), (224, 19983),

Gene: AzulaCat_20 Start: 18861, Stop: 19997, Start Num: 23

Candidate Starts for AzulaCat_20:

(9, 18657), (22, 18816), (Start: 23 @18861 has 72 MA's), (47, 18939), (48, 18942), (50, 18945), (54, 18957), (61, 18975), (68, 19008), (72, 19023), (86, 19104), (111, 19218), (113, 19230), (125, 19317), (127, 19338), (143, 19434), (158, 19512), (176, 19665), (192, 19758), (203, 19848), (211, 19902), (215, 19917), (216, 19920), (218, 19935), (223, 19980), (224, 19983),

Gene: BEEST_25 Start: 19514, Stop: 20596, Start Num: 33

Candidate Starts for BEEST_25:

(Start: 33 @19514 has 134 MA's), (69, 19622), (73, 19640), (75, 19658), (116, 19853), (117, 19856), (125, 19925), (139, 19997), (149, 20072), (154, 20099), (189, 20333), (198, 20393), (204, 20447), (220, 20540), (225, 20579),

Gene: BGlluviae_25 Start: 19514, Stop: 20596, Start Num: 33

Candidate Starts for BGlluviae_25:

(Start: 33 @19514 has 134 MA's), (69, 19622), (73, 19640), (75, 19658), (116, 19853), (117, 19856), (125, 19925), (139, 19997), (149, 20072), (154, 20099), (189, 20333), (198, 20393), (204, 20447), (220, 20540), (225, 20579),

Gene: BPs_20 Start: 18861, Stop: 19997, Start Num: 23

Candidate Starts for BPs_20:

(9, 18657), (22, 18816), (Start: 23 @18861 has 72 MA's), (47, 18939), (48, 18942), (50, 18945), (54, 18957), (61, 18975), (68, 19008), (72, 19023), (86, 19104), (111, 19218), (113, 19230), (125, 19317), (127, 19338), (143, 19434), (158, 19512), (176, 19665), (192, 19758), (203, 19848), (211, 19902), (215, 19917), (216, 19920), (218, 19935), (223, 19980), (224, 19983),

Gene: BQuat_20 Start: 18852, Stop: 19988, Start Num: 23

Candidate Starts for BQuat_20:

(9, 18648), (22, 18807), (Start: 23 @18852 has 72 MA's), (47, 18930), (48, 18933), (50, 18936), (54, 18948), (61, 18966), (68, 18999), (72, 19014), (86, 19095), (111, 19209), (113, 19221), (125, 19308), (127, 19329), (143, 19425), (158, 19503), (176, 19656), (192, 19749), (203, 19839), (211, 19893), (215, 19908), (216, 19911), (218, 19926), (223, 19971), (224, 19974),

Gene: BaghaKamala_25 Start: 19443, Stop: 20525, Start Num: 33

Candidate Starts for BaghaKamala_25:

(Start: 33 @19443 has 134 MA's), (69, 19551), (73, 19569), (75, 19587), (116, 19782), (117, 19785), (125, 19854), (139, 19926), (149, 20001), (154, 20028), (189, 20262), (198, 20322), (204, 20376), (220, 20469), (225, 20508),

Gene: BananenDer11_23 Start: 19831, Stop: 20916, Start Num: 37

Candidate Starts for BananenDer11_23:

(25, 19780), (Start: 37 @19831 has 25 MA's), (50, 19867), (55, 19882), (64, 19906), (72, 19945), (87, 20029), (111, 20140), (116, 20164), (117, 20167), (139, 20314), (154, 20419), (189, 20653), (192, 20671), (204, 20767), (208, 20794), (220, 20860), (221, 20884),

Gene: Barkley26_20 Start: 18864, Stop: 20000, Start Num: 23

Candidate Starts for Barkley26_20:

(9, 18660), (22, 18819), (Start: 23 @18864 has 72 MA's), (47, 18942), (48, 18945), (50, 18948), (54, 18960), (61, 18978), (68, 19011), (72, 19026), (86, 19107), (111, 19221), (113, 19233), (125, 19320), (127, 19341), (143, 19437), (156, 19509), (158, 19515), (176, 19668), (193, 19773), (199, 19815), (203, 19851), (211, 19905), (215, 19920), (216, 19923), (223, 19983), (224, 19986),

Gene: BarrelRoll_25 Start: 19466, Stop: 20548, Start Num: 33

Candidate Starts for BarrelRoll_25:

(Start: 33 @19466 has 134 MA's), (69, 19574), (73, 19592), (75, 19610), (116, 19805), (117, 19808), (125, 19877), (139, 19949), (149, 20024), (154, 20051), (189, 20285), (198, 20345), (204, 20399), (220, 20492), (225, 20531),

Gene: Beezoo_25 Start: 19490, Stop: 20572, Start Num: 33

Candidate Starts for Beezoo_25:

(Start: 33 @19490 has 134 MA's), (69, 19598), (73, 19616), (75, 19634), (116, 19829), (117, 19832), (125, 19901), (139, 19973), (154, 20075), (189, 20309), (198, 20369), (204, 20423), (220, 20516), (225, 20555),

Gene: Bella96_25 Start: 19410, Stop: 20492, Start Num: 33

Candidate Starts for Bella96_25:

(Start: 33 @19410 has 134 MA's), (69, 19518), (73, 19536), (75, 19554), (116, 19749), (117, 19752), (125, 19821), (130, 19854), (139, 19893), (153, 19992), (154, 19995), (169, 20064), (179, 20163), (189, 20229), (190, 20235), (192, 20247), (193, 20259), (221, 20463), (225, 20478),

Gene: Belladonna_25 Start: 19514, Stop: 20596, Start Num: 33

Candidate Starts for Belladonna_25:

(Start: 33 @19514 has 134 MA's), (69, 19622), (73, 19640), (75, 19658), (116, 19853), (117, 19856), (125, 19925), (139, 19997), (149, 20072), (154, 20099), (189, 20333), (198, 20393), (204, 20447), (220, 20540), (225, 20579),

Gene: Bern_25 Start: 19438, Stop: 20520, Start Num: 33

Candidate Starts for Bern_25:

(Start: 33 @19438 has 134 MA's), (69, 19546), (73, 19564), (75, 19582), (116, 19777), (117, 19780), (125, 19849), (154, 20023), (189, 20257), (193, 20287), (198, 20317), (220, 20464),

Gene: Biglebops_21 Start: 19023, Stop: 20105, Start Num: 33

Candidate Starts for Biglebops_21:

(Start: 33 @19023 has 134 MA's), (55, 19080), (69, 19131), (73, 19149), (75, 19167), (87, 19227), (89, 19233), (110, 19332), (116, 19362), (117, 19365), (122, 19413), (129, 19455), (130, 19467), (154, 19608), (157, 19620), (189, 19842), (200, 19917), (206, 19974), (211, 20004), (220, 20049), (225, 20088),

Gene: Bipper_26 Start: 22137, Stop: 23567, Start Num: 7

Candidate Starts for Bipper_26:

(3, 22071), (Start: 7 @22137 has 5 MA's), (9, 22164), (10, 22173), (11, 22176), (14, 22194), (16, 22218), (17, 22221), (19, 22287), (Start: 32 @22416 has 2 MA's), (Start: 38 @22431 has 43 MA's), (Start: 39 @22434 has 1 MA's), (49, 22467), (51, 22470), (65, 22506), (71, 22533), (76, 22563), (77, 22566), (82, 22587), (83, 22596), (85, 22611), (86, 22617), (88, 22626), (94, 22665), (96, 22674), (100, 22680), (106, 22752), (116, 22815), (118, 22821), (119, 22824), (123, 22872), (128, 22899), (130, 22911), (133, 22929), (141, 22962), (146, 23013), (148, 23019), (152, 23046), (162, 23106), (179, 23235), (189, 23301), (194, 23334), (204, 23415), (219, 23511), (224, 23553),

Gene: Blizzard_25 Start: 19514, Stop: 20596, Start Num: 33

Candidate Starts for Blizzard_25:

(Start: 33 @19514 has 134 MA's), (69, 19622), (73, 19640), (75, 19658), (116, 19853), (117, 19856), (125, 19925), (139, 19997), (149, 20072), (154, 20099), (189, 20333), (198, 20393), (204, 20447), (220, 20540), (225, 20579),

Gene: Bobquesha_27 Start: 20670, Stop: 21767, Start Num: 38

Candidate Starts for Bobquesha_27:

(12, 20421), (15, 20448), (26, 20619), (Start: 38 @20670 has 43 MA's), (44, 20682), (73, 20790), (79, 20823), (102, 20925), (110, 20973), (111, 20979), (125, 21075), (130, 21108), (134, 21129), (150, 21225), (154, 21249), (163, 21291), (169, 21318), (192, 21501), (206, 21615), (208, 21624), (225, 21729),

Gene: Boiiii_25 Start: 19516, Stop: 20598, Start Num: 33

Candidate Starts for Boiiii_25:

(Start: 33 @19516 has 134 MA's), (69, 19624), (73, 19642), (75, 19660), (116, 19855), (117, 19858), (125, 19927), (139, 19999), (149, 20074), (154, 20101), (189, 20335), (198, 20395), (204, 20449), (220, 20542), (225, 20581),

Gene: Boilgate_22 Start: 19853, Stop: 20956, Start Num: 38

Candidate Starts for Boilgate_22:

(Start: 38 @19853 has 43 MA's), (72, 19967), (73, 19973), (89, 20057), (93, 20081), (111, 20162), (117, 20189), (125, 20258), (130, 20291), (131, 20294), (149, 20405), (152, 20426), (169, 20501), (170, 20534), (179, 20600), (183, 20627), (189, 20666), (206, 20798), (207, 20804), (208, 20807), (224, 20909),

Gene: BoostSeason_21 Start: 17365, Stop: 18444, Start Num: 38

Candidate Starts for BoostSeason_21:

(20, 17224), (Start: 38 @17365 has 43 MA's), (64, 17440), (69, 17467), (73, 17485), (79, 17518), (117, 17701), (125, 17770), (130, 17803), (154, 17944), (161, 17971), (169, 18013), (170, 18046), (189, 18178), (200, 18253), (204, 18292), (208, 18319),

Gene: BruceB_20 Start: 18861, Stop: 19997, Start Num: 23

Candidate Starts for BruceB_20:

(9, 18657), (22, 18816), (Start: 23 @18861 has 72 MA's), (47, 18939), (48, 18942), (50, 18945), (54, 18957), (61, 18975), (68, 19008), (72, 19023), (86, 19104), (111, 19218), (113, 19230), (125, 19317), (127, 19338), (143, 19434), (158, 19512), (176, 19665), (192, 19758), (203, 19848), (211, 19902), (215, 19917), (216, 19920), (218, 19935), (223, 19980), (224, 19983),

Gene: Bryler_24 Start: 18649, Stop: 19752, Start Num: 33

Candidate Starts for Bryler_24:

(Start: 33 @18649 has 134 MA's), (Start: 41 @18664 has 1 MA's), (61, 18721), (69, 18757), (73, 18775), (110, 18958), (116, 18988), (125, 19060), (154, 19234), (161, 19282), (163, 19297), (169, 19324), (189, 19489), (220, 19696), (221, 19720), (225, 19735),

Gene: CLED96_20 Start: 18861, Stop: 19997, Start Num: 23

Candidate Starts for CLED96_20:

(9, 18657), (22, 18816), (Start: 23 @18861 has 72 MA's), (47, 18939), (48, 18942), (50, 18945), (54, 18957), (61, 18975), (68, 19008), (72, 19023), (86, 19104), (111, 19218), (113, 19230), (125, 19317), (127, 19338), (143, 19434), (158, 19512), (176, 19665), (192, 19758), (203, 19848), (211, 19902), (215, 19917), (216, 19920), (218, 19935), (223, 19980), (224, 19983),

Gene: CREW_25 Start: 19514, Stop: 20596, Start Num: 33

Candidate Starts for CREW_25:

(Start: 33 @19514 has 134 MA's), (69, 19622), (73, 19640), (75, 19658), (116, 19853), (117, 19856), (125, 19925), (139, 19997), (149, 20072), (154, 20099), (189, 20333), (198, 20393), (204, 20447), (220, 20540), (225, 20579),

Gene: Cain_24 Start: 18637, Stop: 19740, Start Num: 33

Candidate Starts for Cain_24:

(Start: 33 @18637 has 134 MA's), (Start: 41 @18652 has 1 MA's), (61, 18709), (69, 18745), (73, 18763), (110, 18946), (116, 18976), (125, 19048), (154, 19222), (161, 19270), (163, 19285), (169, 19312), (189, 19477), (220, 19684), (221, 19708), (225, 19723),

Gene: CallaLilly_25 Start: 19437, Stop: 20519, Start Num: 33

Candidate Starts for CallaLilly_25:

(Start: 33 @19437 has 134 MA's), (69, 19545), (73, 19563), (75, 19581), (116, 19776), (117, 19779), (125, 19848), (139, 19920), (149, 19995), (154, 20022), (189, 20256), (198, 20316), (204, 20370), (220, 20463), (225, 20502),

Gene: Cambiare_21 Start: 19645, Stop: 20790, Start Num: 23

Candidate Starts for Cambiare_21:

(Start: 23 @19645 has 72 MA's), (27, 19657), (47, 19732), (54, 19750), (64, 19777), (68, 19801), (72, 19816), (73, 19822), (86, 19897), (87, 19900), (113, 20023), (125, 20110), (127, 20131), (130, 20152), (143, 20227), (153, 20287), (155, 20296), (164, 20344), (167, 20356), (174, 20440), (176, 20458), (199, 20605), (216, 20713),

Gene: Camri_20 Start: 18861, Stop: 19997, Start Num: 23

Candidate Starts for Camri_20:

(9, 18657), (22, 18816), (Start: 23 @18861 has 72 MA's), (47, 18939), (48, 18942), (50, 18945), (54, 18957), (61, 18975), (68, 19008), (72, 19023), (86, 19104), (111, 19218), (113, 19230), (125, 19317), (127, 19338), (143, 19434), (158, 19512), (176, 19665), (192, 19758), (203, 19848), (211, 19902), (215, 19917), (216, 19920), (218, 19935), (223, 19980), (224, 19983),

Gene: Capricorn_25 Start: 19514, Stop: 20596, Start Num: 33

Candidate Starts for Capricorn_25:

(Start: 33 @19514 has 134 MA's), (69, 19622), (73, 19640), (75, 19658), (116, 19853), (117, 19856), (125, 19925), (139, 19997), (149, 20072), (154, 20099), (189, 20333), (198, 20393), (204, 20447), (220, 20540), (225, 20579),

Gene: CaseJules_25 Start: 19514, Stop: 20596, Start Num: 33

Candidate Starts for CaseJules_25:

(Start: 33 @19514 has 134 MA's), (69, 19622), (73, 19640), (75, 19658), (116, 19853), (117, 19856), (125, 19925), (139, 19997), (149, 20072), (154, 20099), (189, 20333), (198, 20393), (204, 20447), (220, 20540), (225, 20579),

Gene: CassieYates_20 Start: 18861, Stop: 19997, Start Num: 23

Candidate Starts for CassieYates_20:

(9, 18657), (22, 18816), (Start: 23 @18861 has 72 MA's), (47, 18939), (48, 18942), (50, 18945), (54, 18957), (61, 18975), (68, 19008), (72, 19023), (86, 19104), (111, 19218), (113, 19230), (125, 19317), (127, 19338), (143, 19434), (158, 19512), (176, 19665), (192, 19758), (203, 19848), (211, 19902), (215, 19917), (216, 19920), (218, 19935), (223, 19980), (224, 19983),

Gene: Cedasite_20 Start: 18861, Stop: 19997, Start Num: 23

Candidate Starts for Cedasite_20:

(9, 18657), (22, 18816), (Start: 23 @18861 has 72 MA's), (47, 18939), (48, 18942), (50, 18945), (54, 18957), (61, 18975), (68, 19008), (72, 19023), (86, 19104), (111, 19218), (113, 19230), (125, 19317), (127, 19338), (143, 19434), (158, 19512), (176, 19665), (192, 19758), (203, 19848), (211, 19902), (215, 19917), (216, 19920), (218, 19935), (223, 19980), (224, 19983),

Gene: Chance64_20 Start: 18861, Stop: 19997, Start Num: 23

Candidate Starts for Chance64_20:

(9, 18657), (22, 18816), (Start: 23 @18861 has 72 MA's), (47, 18939), (48, 18942), (50, 18945), (54, 18957), (61, 18975), (68, 19008), (72, 19023), (86, 19104), (111, 19218), (113, 19230), (125, 19317), (127, 19338), (143, 19434), (158, 19512), (176, 19665), (192, 19758), (203, 19848), (211, 19902), (215, 19917), (216, 19920), (218, 19935), (223, 19980), (224, 19983),

Gene: Chancellor_26 Start: 20936, Stop: 22033, Start Num: 38

Candidate Starts for Chancellor_26:

(12, 20687), (15, 20714), (26, 20885), (Start: 38 @20936 has 43 MA's), (44, 20948), (73, 21056), (79, 21089), (111, 21245), (117, 21272), (125, 21341), (130, 21374), (139, 21413), (150, 21491), (154, 21515), (163, 21557), (169, 21584), (192, 21767), (206, 21881), (208, 21890), (225, 21995),

Gene: Chavito_25 Start: 18852, Stop: 19934, Start Num: 33

Candidate Starts for Chavito_25:

(Start: 33 @18852 has 134 MA's), (50, 18894), (69, 18960), (73, 18978), (86, 19053), (110, 19161), (116, 19191), (117, 19194), (129, 19284), (130, 19296), (154, 19437), (157, 19449), (180, 19608), (189, 19671), (200, 19746), (220, 19878), (225, 19917),

Gene: CheetoDust_25 Start: 19491, Stop: 20573, Start Num: 33

Candidate Starts for CheetoDust_25:

(Start: 33 @19491 has 134 MA's), (69, 19599), (73, 19617), (75, 19635), (116, 19830), (117, 19833), (125, 19902), (139, 19974), (154, 20076), (189, 20310), (198, 20370), (204, 20424), (220, 20517), (225, 20556),

Gene: Cheetobro_26 Start: 20933, Stop: 22030, Start Num: 38

Candidate Starts for Cheetobro_26:

(12, 20684), (15, 20711), (26, 20882), (Start: 38 @20933 has 43 MA's), (44, 20945), (73, 21053), (79, 21086), (111, 21242), (117, 21269), (125, 21338), (130, 21371), (139, 21410), (150, 21488), (154, 21512), (163, 21554), (169, 21581), (192, 21764), (206, 21878), (208, 21887), (225, 21992),

Gene: Cherrybomb426_20 Start: 18861, Stop: 19997, Start Num: 23

Candidate Starts for Cherrybomb426_20:

(9, 18657), (22, 18816), (Start: 23 @18861 has 72 MA's), (47, 18939), (48, 18942), (50, 18945), (54, 18957), (61, 18975), (68, 19008), (72, 19023), (86, 19104), (111, 19218), (113, 19230), (125, 19317), (127, 19338), (143, 19434), (158, 19512), (176, 19665), (192, 19758), (203, 19848), (211, 19902), (215, 19917), (216, 19920), (218, 19935), (223, 19980), (224, 19983),

Gene: Chris_24 Start: 18745, Stop: 19827, Start Num: 33

Candidate Starts for Chris_24:

(Start: 33 @18745 has 134 MA's), (55, 18802), (69, 18853), (73, 18871), (79, 18904), (116, 19084), (117, 19087), (125, 19156), (130, 19189), (139, 19228), (159, 19351), (161, 19357), (179, 19498), (189, 19564), (203, 19672), (204, 19678), (208, 19705), (225, 19810),

Gene: Clipper_25 Start: 19491, Stop: 20573, Start Num: 33

Candidate Starts for Clipper_25:

(Start: 33 @19491 has 134 MA's), (69, 19599), (73, 19617), (75, 19635), (116, 19830), (117, 19833), (125, 19902), (139, 19974), (154, 20076), (189, 20310), (198, 20370), (204, 20424), (220, 20517), (225, 20556),

Gene: Cloudyecho_20 Start: 19088, Stop: 20233, Start Num: 23

Candidate Starts for Cloudyecho_20:

(Start: 23 @19088 has 72 MA's), (28, 19103), (47, 19175), (54, 19193), (68, 19244), (72, 19259), (86, 19340), (113, 19466), (125, 19553), (127, 19574), (130, 19595), (143, 19670), (153, 19730), (155, 19739), (162, 19781), (174, 19883), (179, 19910), (206, 20108), (211, 20138),

Gene: Coleslaw_20 Start: 18852, Stop: 19988, Start Num: 23

Candidate Starts for Coleslaw_20:

(9, 18648), (22, 18807), (Start: 23 @18852 has 72 MA's), (47, 18930), (48, 18933), (50, 18936), (54, 18948), (61, 18966), (68, 18999), (72, 19014), (86, 19095), (111, 19209), (113, 19221), (125, 19308), (127, 19329), (143, 19425), (158, 19503), (176, 19656), (192, 19749), (203, 19839), (211, 19893), (215, 19908), (216, 19911), (218, 19926), (223, 19971), (224, 19974),

Gene: Collard_23 Start: 19831, Stop: 20916, Start Num: 37

Candidate Starts for Collard_23:

(25, 19780), (Start: 37 @19831 has 25 MA's), (50, 19867), (55, 19882), (64, 19906), (72, 19945), (87, 20029), (111, 20140), (116, 20164), (117, 20167), (139, 20314), (154, 20419), (189, 20653), (192, 20671), (204, 20767), (208, 20794), (220, 20860), (221, 20884),

Gene: Cracklewink_26 Start: 22137, Stop: 23567, Start Num: 7

Candidate Starts for Cracklewink_26:

(3, 22071), (Start: 7 @22137 has 5 MA's), (9, 22164), (10, 22173), (11, 22176), (14, 22194), (16, 22218), (17, 22221), (19, 22287), (Start: 32 @22416 has 2 MA's), (Start: 38 @22431 has 43 MA's), (Start: 39 @22434 has 1 MA's), (49, 22467), (51, 22470), (65, 22506), (71, 22533), (76, 22563), (77,

22566), (82, 22587), (83, 22596), (85, 22611), (86, 22617), (88, 22626), (94, 22665), (96, 22674), (100, 22680), (106, 22752), (116, 22815), (118, 22821), (119, 22824), (123, 22872), (128, 22899), (130, 22911), (133, 22929), (141, 22962), (146, 23013), (148, 23019), (152, 23046), (162, 23106), (179, 23235), (189, 23301), (194, 23334), (204, 23415), (219, 23511), (224, 23553),

Gene: Crespo_20 Start: 18862, Stop: 19998, Start Num: 23

Candidate Starts for Crespo_20:

(9, 18658), (22, 18817), (Start: 23 @18862 has 72 MA's), (47, 18940), (48, 18943), (50, 18946), (54, 18958), (61, 18976), (68, 19009), (72, 19024), (86, 19105), (111, 19219), (113, 19231), (125, 19318), (127, 19339), (143, 19435), (158, 19513), (176, 19666), (192, 19759), (203, 19849), (211, 19903), (215, 19918), (216, 19921), (218, 19936), (223, 19981), (224, 19984),

Gene: CrimD_25 Start: 19452, Stop: 20534, Start Num: 33

Candidate Starts for CrimD_25:

(Start: 33 @19452 has 134 MA's), (69, 19560), (73, 19578), (75, 19596), (116, 19791), (117, 19794), (125, 19863), (139, 19935), (154, 20037), (189, 20271), (198, 20331), (204, 20385), (220, 20478), (225, 20517),

Gene: Curiosium_26 Start: 19185, Stop: 20267, Start Num: 33

Candidate Starts for Curiosium_26:

(Start: 33 @19185 has 134 MA's), (69, 19293), (73, 19311), (116, 19524), (117, 19527), (125, 19596), (139, 19668), (154, 19770), (189, 20004), (198, 20064), (204, 20118), (225, 20250),

Gene: DMoney_20 Start: 18861, Stop: 19997, Start Num: 23

Candidate Starts for DMoney_20:

(9, 18657), (22, 18816), (Start: 23 @18861 has 72 MA's), (47, 18939), (48, 18942), (50, 18945), (54, 18957), (61, 18975), (68, 19008), (72, 19023), (86, 19104), (111, 19218), (113, 19230), (125, 19317), (127, 19338), (143, 19434), (158, 19512), (176, 19665), (192, 19758), (203, 19848), (211, 19902), (215, 19917), (216, 19920), (218, 19935), (223, 19980), (224, 19983),

Gene: DNAIII_0020 Start: 18870, Stop: 20006, Start Num: 23

Candidate Starts for DNAIII_0020:

(9, 18666), (22, 18825), (Start: 23 @18870 has 72 MA's), (47, 18948), (48, 18951), (50, 18954), (54, 18966), (61, 18984), (68, 19017), (72, 19032), (86, 19113), (111, 19227), (113, 19239), (125, 19326), (127, 19347), (143, 19443), (158, 19521), (176, 19674), (192, 19767), (203, 19857), (211, 19911), (215, 19926), (216, 19929), (218, 19944), (223, 19989), (224, 19992),

Gene: Dadosky_24 Start: 19808, Stop: 20893, Start Num: 37

Candidate Starts for Dadosky_24:

(25, 19757), (Start: 37 @19808 has 25 MA's), (50, 19844), (55, 19859), (64, 19883), (72, 19922), (87, 20006), (111, 20117), (116, 20141), (117, 20144), (139, 20291), (154, 20396), (179, 20564), (192, 20648), (193, 20660), (208, 20771), (220, 20837),

Gene: Dalmuri_25 Start: 19514, Stop: 20596, Start Num: 33

Candidate Starts for Dalmuri_25:

(Start: 33 @19514 has 134 MA's), (69, 19622), (73, 19640), (75, 19658), (116, 19853), (117, 19856), (125, 19925), (139, 19997), (149, 20072), (154, 20099), (189, 20333), (198, 20393), (204, 20447), (220, 20540), (225, 20579),

Gene: DanSyl44_27 Start: 20939, Stop: 22036, Start Num: 38

Candidate Starts for DanSyl44_27:

(12, 20690), (15, 20717), (26, 20888), (Start: 38 @20939 has 43 MA's), (44, 20951), (73, 21059), (79, 21092), (89, 21143), (111, 21248), (117, 21275), (125, 21344), (130, 21377), (139, 21416), (150,

21494), (154, 21518), (163, 21560), (169, 21587), (192, 21770), (206, 21884), (208, 21893), (225, 21998),

Gene: Darionha_20 Start: 18861, Stop: 19997, Start Num: 23

Candidate Starts for Darionha_20:

(9, 18657), (22, 18816), (Start: 23 @18861 has 72 MA's), (47, 18939), (48, 18942), (50, 18945), (54, 18957), (61, 18975), (68, 19008), (72, 19023), (86, 19104), (111, 19218), (113, 19230), (125, 19317), (127, 19338), (143, 19434), (158, 19512), (176, 19665), (192, 19758), (203, 19848), (211, 19902), (215, 19917), (216, 19920), (218, 19935), (223, 19980), (224, 19983),

Gene: DartGoblin_25 Start: 19407, Stop: 20489, Start Num: 33

Candidate Starts for DartGoblin_25:

(Start: 33 @19407 has 134 MA's), (69, 19515), (73, 19533), (75, 19551), (116, 19746), (117, 19749), (125, 19818), (130, 19851), (139, 19890), (153, 19989), (154, 19992), (169, 20061), (179, 20160), (189, 20226), (190, 20232), (192, 20244), (193, 20256), (221, 20460), (225, 20475),

Gene: DarthP_24 Start: 19917, Stop: 20999, Start Num: 33

Candidate Starts for DarthP_24:

(Start: 33 @19917 has 134 MA's), (61, 19989), (69, 20025), (72, 20037), (73, 20043), (95, 20163), (109, 20223), (116, 20256), (117, 20259), (130, 20361), (137, 20394), (153, 20499), (154, 20502), (189, 20736), (211, 20898), (221, 20967),

Gene: Dartin_25 Start: 18838, Stop: 19920, Start Num: 33

Candidate Starts for Dartin_25:

(Start: 33 @18838 has 134 MA's), (69, 18946), (73, 18964), (75, 18982), (110, 19147), (116, 19177), (117, 19180), (122, 19228), (130, 19282), (157, 19435), (176, 19582), (189, 19657), (200, 19732), (220, 19864), (221, 19888), (225, 19903),

Gene: Deby_25 Start: 19448, Stop: 20530, Start Num: 33

Candidate Starts for Deby_25:

(Start: 33 @19448 has 134 MA's), (69, 19556), (73, 19574), (75, 19592), (116, 19787), (117, 19790), (125, 19859), (139, 19931), (149, 20006), (154, 20033), (184, 20234), (189, 20267), (198, 20327), (204, 20381), (220, 20474), (225, 20513),

Gene: Devera_25 Start: 19496, Stop: 20578, Start Num: 33

Candidate Starts for Devera_25:

(Start: 33 @19496 has 134 MA's), (50, 19538), (69, 19604), (73, 19622), (75, 19640), (116, 19835), (117, 19838), (125, 19907), (130, 19940), (139, 19979), (154, 20081), (189, 20315), (192, 20333), (198, 20375), (204, 20429), (215, 20492), (220, 20522), (225, 20561),

Gene: DingDing_20 Start: 18861, Stop: 19997, Start Num: 23

Candidate Starts for DingDing_20:

(9, 18657), (22, 18816), (Start: 23 @18861 has 72 MA's), (47, 18939), (48, 18942), (50, 18945), (54, 18957), (61, 18975), (68, 19008), (72, 19023), (86, 19104), (111, 19218), (113, 19230), (125, 19317), (127, 19338), (143, 19434), (158, 19512), (176, 19665), (192, 19758), (203, 19848), (211, 19902), (215, 19917), (216, 19920), (218, 19935), (223, 19980), (224, 19983),

Gene: DismalFunk_21 Start: 17339, Stop: 18418, Start Num: 38

Candidate Starts for DismalFunk_21:

(20, 17198), (Start: 38 @17339 has 43 MA's), (64, 17414), (69, 17441), (72, 17453), (73, 17459), (79, 17492), (117, 17675), (122, 17723), (125, 17744), (140, 17825), (154, 17918), (161, 17945), (169, 17987), (170, 18020), (189, 18152), (200, 18227), (204, 18266), (208, 18293),

Gene: DismalStressor_21 Start: 17339, Stop: 18418, Start Num: 38

Candidate Starts for DismalStressor_21:

(20, 17198), (Start: 38 @17339 has 43 MA's), (64, 17414), (69, 17441), (72, 17453), (73, 17459), (79, 17492), (117, 17675), (122, 17723), (125, 17744), (140, 17825), (154, 17918), (161, 17945), (169, 17987), (170, 18020), (189, 18152), (200, 18227), (204, 18266), (208, 18293),

Gene: Dole_25 Start: 19498, Stop: 20580, Start Num: 33

Candidate Starts for Dole_25:

(Start: 33 @19498 has 134 MA's), (50, 19540), (69, 19606), (73, 19624), (75, 19642), (116, 19837), (117, 19840), (125, 19909), (130, 19942), (139, 19981), (154, 20083), (189, 20317), (192, 20335), (198, 20377), (204, 20431), (215, 20494), (220, 20524), (225, 20563),

Gene: DoubleChamp_23 Start: 19831, Stop: 20916, Start Num: 37

Candidate Starts for DoubleChamp_23:

(25, 19780), (Start: 37 @19831 has 25 MA's), (50, 19867), (55, 19882), (64, 19906), (72, 19945), (87, 20029), (111, 20140), (116, 20164), (117, 20167), (139, 20314), (154, 20419), (189, 20653), (192, 20671), (204, 20767), (208, 20794), (220, 20860), (221, 20884),

Gene: Doughnut_21 Start: 17359, Stop: 18438, Start Num: 38

Candidate Starts for Doughnut_21:

(1, 16762), (6, 17044), (20, 17218), (Start: 38 @17359 has 43 MA's), (64, 17434), (69, 17461), (73, 17479), (79, 17512), (117, 17695), (125, 17764), (130, 17797), (154, 17938), (161, 17965), (169, 18007), (170, 18040), (189, 18172), (200, 18247), (204, 18286), (208, 18313),

Gene: DrHayes_25 Start: 19428, Stop: 20510, Start Num: 33

Candidate Starts for DrHayes_25:

(Start: 33 @19428 has 134 MA's), (69, 19536), (73, 19554), (75, 19572), (116, 19767), (117, 19770), (125, 19839), (130, 19872), (139, 19911), (153, 20010), (154, 20013), (169, 20082), (179, 20181), (189, 20247), (190, 20253), (192, 20265), (193, 20277), (221, 20481), (225, 20496),

Gene: Durfee_25 Start: 19514, Stop: 20596, Start Num: 33

Candidate Starts for Durfee_25:

(Start: 33 @19514 has 134 MA's), (69, 19622), (73, 19640), (75, 19658), (116, 19853), (117, 19856), (125, 19925), (139, 19997), (149, 20072), (154, 20099), (189, 20333), (198, 20393), (204, 20447), (220, 20540), (225, 20579),

Gene: ECartman_20 Start: 18861, Stop: 19997, Start Num: 23

Candidate Starts for ECartman_20:

(9, 18657), (22, 18816), (Start: 23 @18861 has 72 MA's), (47, 18939), (48, 18942), (50, 18945), (54, 18957), (61, 18975), (68, 19008), (72, 19023), (86, 19104), (111, 19218), (113, 19230), (125, 19317), (127, 19338), (143, 19434), (158, 19512), (176, 19665), (192, 19758), (203, 19848), (211, 19902), (215, 19917), (216, 19920), (218, 19935), (223, 19980), (224, 19983),

Gene: Edugator_23 Start: 19807, Stop: 20892, Start Num: 37

Candidate Starts for Edugator_23:

(25, 19756), (Start: 37 @19807 has 25 MA's), (50, 19843), (55, 19858), (64, 19882), (72, 19921), (87, 20005), (111, 20116), (116, 20140), (117, 20143), (139, 20290), (154, 20395), (179, 20563), (192, 20647), (193, 20659), (208, 20770), (220, 20836),

Gene: Efra2_25 Start: 18684, Stop: 19766, Start Num: 33

Candidate Starts for Efra2_25:

(Start: 33 @18684 has 134 MA's), (69, 18792), (73, 18810), (116, 19023), (117, 19026), (125, 19095), (139, 19167), (154, 19269), (189, 19503), (198, 19563), (204, 19617), (220, 19710), (225, 19749),

Gene: Ekdilam_22 Start: 19682, Stop: 20764, Start Num: 33

Candidate Starts for Ekdilam_22:

(Start: 33 @19682 has 134 MA's), (61, 19754), (69, 19790), (73, 19808), (75, 19826), (109, 19988), (116, 20021), (117, 20024), (125, 20093), (130, 20126), (137, 20159), (153, 20264), (154, 20267), (189, 20501), (211, 20663), (221, 20732),

Gene: Ellie_22 Start: 19656, Stop: 20738, Start Num: 33

Candidate Starts for Ellie_22:

(Start: 33 @19656 has 134 MA's), (50, 19698), (69, 19764), (72, 19776), (73, 19782), (89, 19866), (116, 19995), (117, 19998), (125, 20067), (151, 20232), (161, 20268), (163, 20283), (189, 20475), (208, 20616), (221, 20706),

Gene: Emerson_25 Start: 19474, Stop: 20556, Start Num: 33

Candidate Starts for Emerson_25:

(Start: 33 @19474 has 134 MA's), (69, 19582), (73, 19600), (75, 19618), (116, 19813), (117, 19816), (125, 19885), (139, 19957), (149, 20032), (154, 20059), (189, 20293), (198, 20353), (204, 20407), (220, 20500), (225, 20539),

Gene: Enkosi_21 Start: 19023, Stop: 20105, Start Num: 33

Candidate Starts for Enkosi_21:

(Start: 33 @19023 has 134 MA's), (55, 19080), (69, 19131), (73, 19149), (75, 19167), (87, 19227), (89, 19233), (110, 19332), (116, 19362), (117, 19365), (122, 19413), (129, 19455), (130, 19467), (154, 19608), (157, 19620), (189, 19842), (200, 19917), (206, 19974), (211, 20004), (220, 20049), (225, 20088),

Gene: Eponine_26 Start: 20826, Stop: 21923, Start Num: 38

Candidate Starts for Eponine_26:

(12, 20577), (15, 20604), (26, 20775), (Start: 38 @20826 has 43 MA's), (44, 20838), (73, 20946), (79, 20979), (111, 21135), (117, 21162), (125, 21231), (130, 21264), (150, 21381), (154, 21405), (163, 21447), (169, 21474), (192, 21657), (206, 21771), (208, 21780), (225, 21885),

Gene: FF47_23 Start: 18222, Stop: 19322, Start Num: 32

Candidate Starts for FF47_23:

(Start: 32 @18222 has 2 MA's), (46, 18258), (53, 18285), (58, 18297), (72, 18354), (78, 18387), (79, 18393), (92, 18465), (104, 18513), (142, 18744), (170, 18921), (173, 18954), (175, 18963), (176, 18978), (183, 19014), (191, 19068), (208, 19194), (213, 19233), (221, 19293), (226, 19314),

Gene: Faiyaz_26 Start: 21990, Stop: 23429, Start Num: 7

Candidate Starts for Faiyaz_26:

(Start: 7 @21990 has 5 MA's), (8, 22011), (10, 22029), (11, 22032), (13, 22047), (17, 22077), (18, 22116), (19, 22143), (21, 22149), (Start: 38 @22287 has 43 MA's), (62, 22356), (70, 22389), (85, 22473), (86, 22479), (105, 22608), (106, 22614), (108, 22629), (116, 22677), (118, 22683), (119, 22686), (123, 22734), (130, 22773), (133, 22791), (141, 22824), (146, 22875), (152, 22908), (162, 22968), (166, 22980), (169, 22998), (179, 23097), (189, 23163), (204, 23277), (207, 23301), (208, 23304), (219, 23373), (224, 23415),

Gene: Fefferhead_24 Start: 19823, Stop: 20905, Start Num: 33

Candidate Starts for Fefferhead_24:

(Start: 33 @19823 has 134 MA's), (50, 19865), (69, 19931), (72, 19943), (73, 19949), (89, 20033), (116, 20162), (117, 20165), (125, 20234), (151, 20399), (154, 20408), (161, 20435), (163, 20450), (189, 20642), (208, 20783), (221, 20873),

Gene: Feyre_23 Start: 19692, Stop: 20777, Start Num: 37

Candidate Starts for Feyre_23:

(25, 19641), (Start: 37 @19692 has 25 MA's), (50, 19728), (55, 19743), (64, 19767), (72, 19806), (87, 19890), (111, 20001), (116, 20025), (117, 20028), (139, 20175), (154, 20280), (189, 20514), (192, 20532), (204, 20628), (208, 20655), (220, 20721), (221, 20745),

Gene: Findley_21 Start: 17342, Stop: 18418, Start Num: 38

Candidate Starts for Findley_21:

(20, 17201), (Start: 38 @17342 has 43 MA's), (64, 17417), (69, 17444), (72, 17456), (73, 17462), (79, 17495), (117, 17678), (122, 17726), (125, 17747), (154, 17921), (161, 17948), (169, 17990), (170, 18023), (200, 18230), (204, 18269),

Gene: Fionnbharth_26 Start: 20926, Stop: 22023, Start Num: 38

Candidate Starts for Fionnbharth_26:

(12, 20677), (15, 20704), (26, 20875), (Start: 38 @20926 has 43 MA's), (44, 20938), (73, 21046), (79, 21079), (111, 21235), (117, 21262), (125, 21331), (130, 21364), (150, 21481), (154, 21505), (163, 21547), (169, 21574), (192, 21757), (206, 21871), (208, 21880), (225, 21985),

Gene: FlagStaff_20 Start: 19051, Stop: 20202, Start Num: 23

Candidate Starts for FlagStaff_20:

(Start: 23 @19051 has 72 MA's), (47, 19144), (54, 19162), (64, 19189), (68, 19213), (72, 19228), (73, 19234), (86, 19309), (87, 19312), (113, 19435), (125, 19522), (130, 19564), (143, 19639), (153, 19699), (155, 19708), (167, 19768), (176, 19870), (216, 20125),

Gene: Frosty24_20 Start: 18861, Stop: 19997, Start Num: 23

Candidate Starts for Frosty24_20:

(9, 18657), (22, 18816), (Start: 23 @18861 has 72 MA's), (47, 18939), (48, 18942), (50, 18945), (54, 18957), (61, 18975), (68, 19008), (72, 19023), (86, 19104), (111, 19218), (113, 19230), (125, 19317), (127, 19338), (143, 19434), (158, 19512), (176, 19665), (192, 19758), (203, 19848), (211, 19902), (215, 19917), (216, 19920), (218, 19935), (223, 19980), (224, 19983),

Gene: Ganymede_26 Start: 19494, Stop: 20576, Start Num: 33

Candidate Starts for Ganymede_26:

(Start: 33 @19494 has 134 MA's), (69, 19602), (73, 19620), (75, 19638), (116, 19833), (117, 19836), (125, 19905), (139, 19977), (154, 20079), (189, 20313), (198, 20373), (204, 20427), (220, 20520), (225, 20559),

Gene: Gengar_23 Start: 19799, Stop: 20884, Start Num: 37

Candidate Starts for Gengar_23:

(25, 19748), (Start: 37 @19799 has 25 MA's), (50, 19835), (55, 19850), (64, 19874), (72, 19913), (87, 19997), (111, 20108), (116, 20132), (117, 20135), (139, 20282), (153, 20384), (154, 20387), (189, 20621), (192, 20639), (204, 20735), (220, 20828), (221, 20852),

Gene: Geraldini_25 Start: 19490, Stop: 20572, Start Num: 33

Candidate Starts for Geraldini_25:

(Start: 33 @19490 has 134 MA's), (69, 19598), (73, 19616), (75, 19634), (116, 19829), (117, 19832), (125, 19901), (139, 19973), (154, 20075), (189, 20309), (198, 20369), (204, 20423), (220, 20516), (225, 20555),

Gene: Gideon_20 Start: 18861, Stop: 19997, Start Num: 23

Candidate Starts for Gideon_20:

(9, 18657), (22, 18816), (Start: 23 @18861 has 72 MA's), (47, 18939), (48, 18942), (50, 18945), (54, 18957), (61, 18975), (68, 19008), (72, 19023), (86, 19104), (111, 19218), (113, 19230), (125, 19317),

(127, 19338), (143, 19434), (158, 19512), (176, 19665), (192, 19758), (203, 19848), (211, 19902), (215, 19917), (216, 19920), (218, 19935), (223, 19980), (224, 19983),

Gene: GodSpeed_21 Start: 19084, Stop: 20235, Start Num: 23

Candidate Starts for GodSpeed_21:

(Start: 23 @19084 has 72 MA's), (47, 19177), (54, 19195), (64, 19222), (68, 19246), (72, 19261), (73, 19267), (75, 19285), (79, 19300), (86, 19342), (87, 19345), (113, 19468), (125, 19555), (127, 19576), (130, 19597), (143, 19672), (153, 19732), (155, 19741), (167, 19801), (174, 19885), (176, 19903), (206, 20110), (216, 20158),

Gene: GoldenAsh_20 Start: 18861, Stop: 19997, Start Num: 23

Candidate Starts for GoldenAsh_20:

(9, 18657), (22, 18816), (Start: 23 @18861 has 72 MA's), (47, 18939), (48, 18942), (50, 18945), (54, 18957), (61, 18975), (68, 19008), (72, 19023), (86, 19104), (111, 19218), (113, 19230), (125, 19317), (127, 19338), (143, 19434), (158, 19512), (176, 19665), (192, 19758), (203, 19848), (211, 19902), (215, 19917), (216, 19920), (218, 19935), (223, 19980), (224, 19983),

Gene: Gomashi_20 Start: 18862, Stop: 19998, Start Num: 23

Candidate Starts for Gomashi_20:

(9, 18658), (22, 18817), (Start: 23 @18862 has 72 MA's), (47, 18940), (48, 18943), (50, 18946), (54, 18958), (61, 18976), (68, 19009), (72, 19024), (86, 19105), (111, 19219), (113, 19231), (125, 19318), (127, 19339), (143, 19435), (158, 19513), (176, 19666), (192, 19759), (203, 19849), (211, 19903), (215, 19918), (216, 19921), (218, 19936), (223, 19981), (224, 19984),

Gene: Grizzly_20 Start: 18864, Stop: 20000, Start Num: 23

Candidate Starts for Grizzly_20:

(9, 18660), (22, 18819), (Start: 23 @18864 has 72 MA's), (47, 18942), (48, 18945), (50, 18948), (54, 18960), (61, 18978), (68, 19011), (72, 19026), (86, 19107), (111, 19221), (113, 19233), (125, 19320), (127, 19341), (143, 19437), (156, 19509), (158, 19515), (176, 19668), (193, 19773), (199, 19815), (203, 19851), (211, 19905), (215, 19920), (216, 19923), (223, 19983), (224, 19986),

Gene: Guanica15_25 Start: 18700, Stop: 19782, Start Num: 33

Candidate Starts for Guanica15_25:

(Start: 33 @18700 has 134 MA's), (69, 18808), (73, 18826), (116, 19039), (117, 19042), (125, 19111), (139, 19183), (154, 19285), (189, 19519), (198, 19579), (204, 19633), (220, 19726), (225, 19765),

Gene: Guillsminger_23 Start: 19774, Stop: 20859, Start Num: 37

Candidate Starts for Guillsminger_23:

(25, 19723), (Start: 37 @19774 has 25 MA's), (50, 19810), (55, 19825), (64, 19849), (72, 19888), (87, 19972), (111, 20083), (116, 20107), (117, 20110), (139, 20257), (154, 20362), (189, 20596), (192, 20614), (204, 20710), (208, 20737), (220, 20803),

Gene: Halo_20 Start: 18856, Stop: 19992, Start Num: 23

Candidate Starts for Halo_20:

(9, 18652), (22, 18811), (Start: 23 @18856 has 72 MA's), (47, 18934), (48, 18937), (50, 18940), (54, 18952), (61, 18970), (68, 19003), (72, 19018), (86, 19099), (111, 19213), (113, 19225), (125, 19312), (127, 19333), (143, 19429), (158, 19507), (176, 19660), (192, 19753), (203, 19843), (211, 19897), (215, 19912), (216, 19915), (218, 19930), (223, 19975), (224, 19978),

Gene: Hammy_24 Start: 19914, Stop: 20996, Start Num: 33

Candidate Starts for Hammy_24:

(Start: 33 @19914 has 134 MA's), (61, 19986), (69, 20022), (73, 20040), (95, 20160), (109, 20220), (116, 20253), (117, 20256), (130, 20358), (137, 20391), (153, 20496), (154, 20499), (189, 20733),

(211, 20895), (221, 20964),

Gene: HedwigODU_25 Start: 19483, Stop: 20565, Start Num: 33

Candidate Starts for HedwigODU_25:

(Start: 33 @19483 has 134 MA's), (69, 19591), (73, 19609), (75, 19627), (116, 19822), (117, 19825), (125, 19894), (139, 19966), (154, 20068), (189, 20302), (198, 20362), (204, 20416), (220, 20509), (225, 20548),

Gene: Heftyboy_23 Start: 19922, Stop: 21007, Start Num: 37

Candidate Starts for Heftyboy_23:

(25, 19871), (Start: 37 @19922 has 25 MA's), (50, 19958), (55, 19973), (64, 19997), (72, 20036), (87, 20120), (111, 20231), (116, 20255), (117, 20258), (139, 20405), (154, 20510), (189, 20744), (192, 20762), (204, 20858), (208, 20885), (220, 20951),

Gene: Hilltopfarm_26 Start: 22020, Stop: 23459, Start Num: 7

Candidate Starts for Hilltopfarm_26:

(Start: 7 @22020 has 5 MA's), (8, 22041), (10, 22059), (11, 22062), (13, 22077), (17, 22107), (18, 22146), (19, 22173), (21, 22179), (Start: 38 @22317 has 43 MA's), (62, 22386), (70, 22419), (85, 22503), (86, 22509), (105, 22638), (106, 22644), (108, 22659), (116, 22707), (118, 22713), (119, 22716), (123, 22764), (130, 22803), (133, 22821), (141, 22854), (146, 22905), (152, 22938), (162, 22998), (166, 23010), (169, 23028), (179, 23127), (189, 23193), (204, 23307), (207, 23331), (208, 23334), (219, 23403), (224, 23445),

Gene: Homura_25 Start: 19514, Stop: 20596, Start Num: 33

Candidate Starts for Homura_25:

(Start: 33 @19514 has 134 MA's), (69, 19622), (73, 19640), (75, 19658), (116, 19853), (117, 19856), (125, 19925), (139, 19997), (149, 20072), (154, 20099), (189, 20333), (198, 20393), (204, 20447), (220, 20540), (225, 20579),

Gene: Hope_20 Start: 18861, Stop: 19997, Start Num: 23

Candidate Starts for Hope_20:

(9, 18657), (22, 18816), (Start: 23 @18861 has 72 MA's), (47, 18939), (48, 18942), (50, 18945), (54, 18957), (61, 18975), (68, 19008), (72, 19023), (86, 19104), (111, 19218), (113, 19230), (125, 19317), (127, 19338), (143, 19434), (158, 19512), (176, 19665), (192, 19758), (203, 19848), (211, 19902), (215, 19917), (216, 19920), (218, 19935), (223, 19980), (224, 19983),

Gene: Hotshotbaby7_20 Start: 18861, Stop: 19997, Start Num: 23

Candidate Starts for Hotshotbaby7_20:

(9, 18657), (22, 18816), (Start: 23 @18861 has 72 MA's), (47, 18939), (48, 18942), (50, 18945), (54, 18957), (61, 18975), (68, 19008), (72, 19023), (86, 19104), (111, 19218), (113, 19230), (125, 19317), (127, 19338), (143, 19434), (158, 19512), (176, 19665), (192, 19758), (203, 19848), (211, 19902), (215, 19917), (216, 19920), (218, 19935), (223, 19980), (224, 19983),

Gene: Hurricane_24 Start: 19911, Stop: 20999, Start Num: 38

Candidate Starts for Hurricane_24:

(Start: 38 @19911 has 43 MA's), (44, 19923), (45, 19926), (61, 19977), (69, 20013), (73, 20031), (75, 20049), (79, 20064), (99, 20160), (110, 20226), (117, 20259), (125, 20328), (130, 20361), (142, 20427), (153, 20499), (154, 20502), (189, 20736), (206, 20868), (220, 20943), (221, 20967), (225, 20982),

Gene: Hyperbowlee_25 Start: 19514, Stop: 20596, Start Num: 33

Candidate Starts for Hyperbowlee_25:

(Start: 33 @19514 has 134 MA's), (69, 19622), (73, 19640), (75, 19658), (116, 19853), (117, 19856), (125, 19925), (139, 19997), (149, 20072), (154, 20099), (189, 20333), (198, 20393), (204, 20447), (220, 20540), (225, 20579),

Gene: Illumine_25 Start: 19498, Stop: 20580, Start Num: 33

Candidate Starts for Illumine_25:

(Start: 33 @19498 has 134 MA's), (50, 19540), (69, 19606), (73, 19624), (75, 19642), (116, 19837), (117, 19840), (125, 19909), (130, 19942), (139, 19981), (154, 20083), (189, 20317), (192, 20335), (198, 20377), (204, 20431), (215, 20494), (220, 20524), (225, 20563),

Gene: Inky_25 Start: 19514, Stop: 20596, Start Num: 33

Candidate Starts for Inky_25:

(Start: 33 @19514 has 134 MA's), (69, 19622), (73, 19640), (75, 19658), (116, 19853), (117, 19856), (125, 19925), (139, 19997), (149, 20072), (154, 20099), (189, 20333), (198, 20393), (204, 20447), (220, 20540), (225, 20579),

Gene: InvictusManeo_23 Start: 19874, Stop: 20959, Start Num: 37

Candidate Starts for InvictusManeo_23:

(25, 19823), (Start: 37 @19874 has 25 MA's), (50, 19910), (55, 19925), (64, 19949), (72, 19988), (87, 20072), (111, 20183), (116, 20207), (117, 20210), (139, 20357), (154, 20462), (189, 20696), (192, 20714), (204, 20810), (208, 20837), (220, 20903), (221, 20927),

Gene: JAWS_25 Start: 19468, Stop: 20550, Start Num: 33

Candidate Starts for JAWS_25:

(Start: 33 @19468 has 134 MA's), (69, 19576), (73, 19594), (75, 19612), (116, 19807), (117, 19810), (125, 19879), (139, 19951), (149, 20026), (154, 20053), (189, 20287), (198, 20347), (204, 20401), (220, 20494), (225, 20533),

Gene: JF1_26 Start: 20925, Stop: 22022, Start Num: 38

Candidate Starts for JF1_26:

(12, 20676), (15, 20703), (26, 20874), (Start: 38 @20925 has 43 MA's), (44, 20937), (73, 21045), (79, 21078), (111, 21234), (117, 21261), (125, 21330), (130, 21363), (150, 21480), (154, 21504), (163, 21546), (169, 21573), (192, 21756), (206, 21870), (208, 21879), (225, 21984),

Gene: JacoRen57_19 Start: 17743, Stop: 18843, Start Num: 40

Candidate Starts for JacoRen57_19:

(Start: 40 @17743 has 2 MA's), (55, 17791), (69, 17842), (72, 17854), (74, 17863), (78, 17887), (115, 18073), (145, 18283), (147, 18298), (175, 18481), (182, 18526), (186, 18553), (189, 18571), (201, 18673), (202, 18676), (208, 18712), (209, 18727), (222, 18817),

Gene: Jane_20 Start: 18861, Stop: 19997, Start Num: 23

Candidate Starts for Jane_20:

(9, 18657), (22, 18816), (Start: 23 @18861 has 72 MA's), (47, 18939), (48, 18942), (50, 18945), (54, 18957), (61, 18975), (68, 19008), (72, 19023), (86, 19104), (111, 19218), (113, 19230), (125, 19317), (127, 19338), (143, 19434), (158, 19512), (176, 19665), (192, 19758), (203, 19848), (211, 19902), (215, 19917), (216, 19920), (218, 19935), (223, 19980), (224, 19983),

Gene: Jarvi_25 Start: 19514, Stop: 20596, Start Num: 33

Candidate Starts for Jarvi_25:

(Start: 33 @19514 has 134 MA's), (69, 19622), (73, 19640), (75, 19658), (116, 19853), (117, 19856), (125, 19925), (139, 19997), (149, 20072), (154, 20099), (189, 20333), (198, 20393), (204, 20447), (220, 20540), (225, 20579),

Gene: Jayhawk_25 Start: 19481, Stop: 20563, Start Num: 33

Candidate Starts for Jayhawk_25:

(Start: 33 @19481 has 134 MA's), (69, 19589), (73, 19607), (75, 19625), (116, 19820), (117, 19823), (125, 19892), (139, 19964), (154, 20066), (189, 20300), (198, 20360), (204, 20414), (220, 20507), (225, 20546),

Gene: Jeckyll_25 Start: 19514, Stop: 20596, Start Num: 33

Candidate Starts for Jeckyll_25:

(Start: 33 @19514 has 134 MA's), (69, 19622), (73, 19640), (75, 19658), (116, 19853), (117, 19856), (125, 19925), (139, 19997), (149, 20072), (154, 20099), (189, 20333), (198, 20393), (204, 20447), (220, 20540), (225, 20579),

Gene: Jeilious_20 Start: 18860, Stop: 19996, Start Num: 23

Candidate Starts for Jeilious_20:

(9, 18656), (22, 18815), (Start: 23 @18860 has 72 MA's), (47, 18938), (48, 18941), (50, 18944), (54, 18956), (61, 18974), (68, 19007), (72, 19022), (86, 19103), (111, 19217), (113, 19229), (125, 19316), (127, 19337), (143, 19433), (158, 19511), (176, 19664), (192, 19757), (203, 19847), (211, 19901), (215, 19916), (216, 19919), (218, 19934), (223, 19979), (224, 19982),

Gene: Jolene_20 Start: 18861, Stop: 19997, Start Num: 23

Candidate Starts for Jolene_20:

(9, 18657), (22, 18816), (Start: 23 @18861 has 72 MA's), (47, 18939), (48, 18942), (50, 18945), (54, 18957), (61, 18975), (68, 19008), (72, 19023), (86, 19104), (111, 19218), (113, 19230), (125, 19317), (127, 19338), (143, 19434), (158, 19512), (176, 19665), (192, 19758), (203, 19848), (211, 19902), (215, 19917), (216, 19920), (218, 19935), (223, 19980), (224, 19983),

Gene: Jolie2_20 Start: 18194, Stop: 19330, Start Num: 24

Candidate Starts for Jolie2_20:

(Start: 24 @18194 has 2 MA's), (31, 18221), (47, 18272), (54, 18290), (68, 18341), (73, 18362), (86, 18437), (113, 18563), (125, 18650), (143, 18767), (155, 18836), (176, 18998), (203, 19181), (206, 19205), (215, 19250), (216, 19253), (224, 19316), (225, 19319),

Gene: Jonghyun_20 Start: 18861, Stop: 19997, Start Num: 23

Candidate Starts for Jonghyun_20:

(9, 18657), (22, 18816), (Start: 23 @18861 has 72 MA's), (47, 18939), (48, 18942), (50, 18945), (54, 18957), (61, 18975), (68, 19008), (72, 19023), (86, 19104), (111, 19218), (113, 19230), (125, 19317), (127, 19338), (143, 19434), (158, 19512), (176, 19665), (192, 19758), (203, 19848), (211, 19902), (215, 19917), (216, 19920), (218, 19935), (223, 19980), (224, 19983),

Gene: JorRay_20 Start: 18861, Stop: 19997, Start Num: 23

Candidate Starts for JorRay_20:

(9, 18657), (22, 18816), (Start: 23 @18861 has 72 MA's), (47, 18939), (48, 18942), (50, 18945), (54, 18957), (61, 18975), (68, 19008), (72, 19023), (86, 19104), (111, 19218), (113, 19230), (125, 19317), (127, 19338), (143, 19434), (158, 19512), (176, 19665), (192, 19758), (203, 19848), (211, 19902), (215, 19917), (216, 19920), (218, 19935), (223, 19980), (224, 19983),

Gene: Joy99_25 Start: 19443, Stop: 20525, Start Num: 33

Candidate Starts for Joy99_25:

(Start: 33 @19443 has 134 MA's), (69, 19551), (73, 19569), (75, 19587), (116, 19782), (117, 19785), (125, 19854), (139, 19926), (149, 20001), (154, 20028), (189, 20262), (198, 20322), (204, 20376), (220, 20469), (225, 20508),

Gene: Juliette_26 Start: 20826, Stop: 21923, Start Num: 38

Candidate Starts for Juliette_26:

(12, 20577), (15, 20604), (26, 20775), (Start: 38 @20826 has 43 MA's), (44, 20838), (73, 20946), (79, 20979), (111, 21135), (117, 21162), (125, 21231), (130, 21264), (150, 21381), (154, 21405), (163, 21447), (169, 21474), (192, 21657), (206, 21771), (208, 21780), (225, 21885),

Gene: Kareem_20 Start: 18861, Stop: 19997, Start Num: 23

Candidate Starts for Kareem_20:

(9, 18657), (22, 18816), (Start: 23 @18861 has 72 MA's), (47, 18939), (48, 18942), (50, 18945), (54, 18957), (61, 18975), (68, 19008), (72, 19023), (86, 19104), (111, 19218), (113, 19230), (125, 19317), (127, 19338), (143, 19434), (158, 19512), (176, 19665), (192, 19758), (203, 19848), (211, 19902), (215, 19917), (216, 19920), (218, 19935), (223, 19980), (224, 19983),

Gene: Kasen3_20 Start: 18862, Stop: 19998, Start Num: 23

Candidate Starts for Kasen3_20:

(9, 18658), (22, 18817), (Start: 23 @18862 has 72 MA's), (47, 18940), (48, 18943), (50, 18946), (54, 18958), (61, 18976), (68, 19009), (72, 19024), (86, 19105), (111, 19219), (113, 19231), (125, 19318), (127, 19339), (143, 19435), (158, 19513), (176, 19666), (192, 19759), (203, 19849), (211, 19903), (215, 19918), (216, 19921), (218, 19936), (223, 19981), (224, 19984),

Gene: Keshu_24 Start: 19903, Stop: 20991, Start Num: 38

Candidate Starts for Keshu_24:

(Start: 38 @19903 has 43 MA's), (44, 19915), (45, 19918), (61, 19969), (69, 20005), (73, 20023), (75, 20041), (79, 20056), (99, 20152), (110, 20218), (111, 20224), (117, 20251), (125, 20320), (130, 20353), (142, 20419), (153, 20491), (154, 20494), (189, 20728), (194, 20761), (206, 20860), (220, 20935), (221, 20959), (225, 20974),

Gene: KiSi_24 Start: 18646, Stop: 19728, Start Num: 33

Candidate Starts for KiSi_24:

(Start: 33 @18646 has 134 MA's), (45, 18667), (55, 18703), (64, 18727), (69, 18754), (73, 18772), (79, 18805), (80, 18808), (116, 18985), (117, 18988), (125, 19057), (139, 19129), (154, 19231), (179, 19399), (189, 19465), (204, 19579), (208, 19606), (210, 19618), (225, 19711),

Gene: Kratio_22 Start: 19505, Stop: 20590, Start Num: 37

Candidate Starts for Kratio_22:

(25, 19454), (Start: 37 @19505 has 25 MA's), (50, 19541), (55, 19556), (64, 19580), (72, 19619), (87, 19703), (111, 19814), (116, 19838), (117, 19841), (139, 19988), (154, 20093), (189, 20327), (192, 20345), (204, 20441), (208, 20468), (220, 20534), (221, 20558),

Gene: Kraw_26 Start: 20849, Stop: 21946, Start Num: 38

Candidate Starts for Kraw_26:

(12, 20600), (15, 20627), (26, 20798), (Start: 38 @20849 has 43 MA's), (44, 20861), (73, 20969), (79, 21002), (111, 21158), (117, 21185), (125, 21254), (130, 21287), (150, 21404), (154, 21428), (163, 21470), (169, 21497), (192, 21680), (206, 21794), (208, 21803), (225, 21908),

Gene: Krueger_24 Start: 18615, Stop: 19697, Start Num: 33

Candidate Starts for Krueger_24:

(Start: 33 @18615 has 134 MA's), (Start: 41 @18630 has 1 MA's), (61, 18687), (69, 18723), (73, 18741), (110, 18924), (116, 18954), (117, 18957), (125, 19026), (139, 19098), (154, 19200), (159, 19221), (161, 19227), (189, 19434), (208, 19575), (220, 19641), (221, 19665), (225, 19680),

Gene: Larva_24 Start: 19675, Stop: 20760, Start Num: 37

Candidate Starts for Larva_24:

(25, 19624), (Start: 37 @19675 has 25 MA's), (50, 19711), (55, 19726), (64, 19750), (72, 19789), (87, 19873), (111, 19984), (116, 20008), (117, 20011), (139, 20158), (154, 20263), (179, 20431), (189, 20497), (192, 20515), (193, 20527), (208, 20638), (220, 20704),

Gene: LastHope_25 Start: 18777, Stop: 19859, Start Num: 33

Candidate Starts for LastHope_25:

(Start: 33 @18777 has 134 MA's), (69, 18885), (73, 18903), (75, 18921), (116, 19116), (117, 19119), (125, 19188), (139, 19260), (149, 19335), (154, 19362), (169, 19431), (172, 19482), (189, 19596), (198, 19656), (204, 19710), (220, 19803), (225, 19842),

Gene: LaterM_25 Start: 19444, Stop: 20529, Start Num: 33

Candidate Starts for LaterM_25:

(Start: 33 @19444 has 134 MA's), (69, 19552), (73, 19570), (75, 19588), (116, 19783), (117, 19786), (125, 19855), (130, 19888), (139, 19927), (154, 20029), (169, 20098), (189, 20263), (193, 20293), (194, 20296), (200, 20338), (204, 20377), (208, 20404), (223, 20503),

Gene: Lavahound_23 Start: 19575, Stop: 20657, Start Num: 33

Candidate Starts for Lavahound_23:

(Start: 33 @19575 has 134 MA's), (50, 19617), (69, 19683), (72, 19695), (73, 19701), (89, 19785), (116, 19914), (117, 19917), (125, 19986), (151, 20151), (154, 20160), (161, 20187), (163, 20202), (189, 20394), (208, 20535), (221, 20625),

Gene: LeMond_24 Start: 18717, Stop: 19799, Start Num: 33

Candidate Starts for LeMond_24:

(Start: 33 @18717 has 134 MA's), (45, 18738), (55, 18774), (64, 18798), (69, 18825), (73, 18843), (79, 18876), (80, 18879), (116, 19056), (117, 19059), (125, 19128), (139, 19200), (154, 19302), (179, 19470), (189, 19536), (204, 19650), (208, 19677), (210, 19689), (225, 19782),

Gene: Lea83_24 Start: 19891, Stop: 20979, Start Num: 38

Candidate Starts for Lea83_24:

(Start: 38 @19891 has 43 MA's), (44, 19903), (45, 19906), (61, 19957), (69, 19993), (73, 20011), (75, 20029), (79, 20044), (99, 20140), (110, 20206), (111, 20212), (117, 20239), (125, 20308), (130, 20341), (140, 20389), (142, 20407), (153, 20479), (154, 20482), (189, 20716), (194, 20749), (206, 20848), (220, 20923), (221, 20947), (225, 20962),

Gene: Lebo14_26 Start: 20942, Stop: 22039, Start Num: 38

Candidate Starts for Lebo14_26:

(12, 20693), (15, 20720), (26, 20891), (Start: 38 @20942 has 43 MA's), (44, 20954), (73, 21062), (79, 21095), (111, 21251), (117, 21278), (125, 21347), (130, 21380), (139, 21419), (150, 21497), (154, 21521), (163, 21563), (169, 21590), (192, 21773), (206, 21887), (208, 21896), (225, 22001),

Gene: Lemuria_21 Start: 19002, Stop: 20144, Start Num: 24

Candidate Starts for Lemuria_21:

(22, 18954), (Start: 24 @19002 has 2 MA's), (54, 19104), (68, 19155), (73, 19176), (86, 19251), (111, 19365), (113, 19377), (125, 19464), (127, 19485), (130, 19506), (143, 19581), (174, 19794), (176, 19812), (203, 19995), (208, 20028), (215, 20064), (216, 20067), (224, 20130), (225, 20133),

Gene: Leston_23 Start: 19904, Stop: 20989, Start Num: 37

Candidate Starts for Leston_23:

(25, 19853), (Start: 37 @19904 has 25 MA's), (50, 19940), (55, 19955), (64, 19979), (72, 20018), (87, 20102), (111, 20213), (116, 20237), (117, 20240), (139, 20387), (154, 20492), (189, 20726), (192, 20744), (204, 20840), (208, 20867), (220, 20933),

Gene: Liefie_20 Start: 18860, Stop: 19996, Start Num: 23

Candidate Starts for Liefie_20:

(9, 18656), (22, 18815), (Start: 23 @18860 has 72 MA's), (47, 18938), (48, 18941), (50, 18944), (54, 18956), (61, 18974), (68, 19007), (72, 19022), (86, 19103), (111, 19217), (113, 19229), (125, 19316), (127, 19337), (143, 19433), (158, 19511), (176, 19664), (192, 19757), (203, 19847), (211, 19901), (215, 19916), (216, 19919), (218, 19934), (223, 19979), (224, 19982),

Gene: LilDirt_22 Start: 19631, Stop: 20716, Start Num: 37

Candidate Starts for LilDirt_22:

(25, 19580), (Start: 37 @19631 has 25 MA's), (50, 19667), (55, 19682), (64, 19706), (72, 19745), (87, 19829), (111, 19940), (116, 19964), (117, 19967), (139, 20114), (154, 20219), (189, 20453), (192, 20471), (204, 20567), (208, 20594), (220, 20660), (221, 20684),

Gene: LilPharaoh_21 Start: 19023, Stop: 20105, Start Num: 33

Candidate Starts for LilPharaoh_21:

(Start: 33 @19023 has 134 MA's), (55, 19080), (69, 19131), (73, 19149), (75, 19167), (87, 19227), (89, 19233), (110, 19332), (116, 19362), (117, 19365), (122, 19413), (129, 19455), (130, 19467), (154, 19608), (157, 19620), (189, 19842), (200, 19917), (206, 19974), (211, 20004), (220, 20049), (225, 20088),

Gene: LindNT_25 Start: 19448, Stop: 20530, Start Num: 33

Candidate Starts for LindNT_25:

(Start: 33 @19448 has 134 MA's), (69, 19556), (73, 19574), (75, 19592), (116, 19787), (117, 19790), (125, 19859), (139, 19931), (154, 20033), (189, 20267), (198, 20327), (204, 20381), (220, 20474), (225, 20513),

Gene: Llorens_25 Start: 19514, Stop: 20596, Start Num: 33

Candidate Starts for Llorens_25:

(Start: 33 @19514 has 134 MA's), (69, 19622), (73, 19640), (75, 19658), (116, 19853), (117, 19856), (125, 19925), (139, 19997), (149, 20072), (154, 20099), (189, 20333), (198, 20393), (204, 20447), (220, 20540), (225, 20579),

Gene: LongHai_24 Start: 18596, Stop: 19696, Start Num: 32

Candidate Starts for LongHai_24:

(Start: 32 @18596 has 2 MA's), (46, 18632), (53, 18659), (58, 18671), (72, 18728), (78, 18761), (79, 18767), (92, 18839), (104, 18887), (142, 19118), (152, 19187), (170, 19295), (173, 19328), (175, 19337), (176, 19352), (183, 19388), (191, 19442), (208, 19568), (221, 19667), (226, 19688),

Gene: LouisV14_20 Start: 18861, Stop: 19997, Start Num: 23

Candidate Starts for LouisV14_20:

(9, 18657), (22, 18816), (Start: 23 @18861 has 72 MA's), (47, 18939), (48, 18942), (50, 18945), (54, 18957), (61, 18975), (68, 19008), (72, 19023), (86, 19104), (111, 19218), (113, 19230), (125, 19317), (127, 19338), (143, 19434), (158, 19512), (176, 19665), (192, 19758), (203, 19848), (211, 19902), (215, 19917), (216, 19920), (218, 19935), (223, 19980), (224, 19983),

Gene: Lunahalos_25 Start: 19514, Stop: 20596, Start Num: 33

Candidate Starts for Lunahalos_25:

(Start: 33 @19514 has 134 MA's), (69, 19622), (73, 19640), (75, 19658), (116, 19853), (117, 19856), (125, 19925), (139, 19997), (149, 20072), (154, 20099), (189, 20333), (198, 20393), (204, 20447), (220, 20540), (225, 20579),

Gene: MOOREtheMARYer_21 Start: 19205, Stop: 20350, Start Num: 23

Candidate Starts for MOOREtheMARYer_21:

(Start: 23 @19205 has 72 MA's), (28, 19220), (47, 19292), (54, 19310), (68, 19361), (72, 19376), (86, 19457), (95, 19502), (113, 19583), (125, 19670), (130, 19712), (143, 19787), (144, 19796), (162, 19898), (206, 20225),

Gene: MZKinsey_20 Start: 18861, Stop: 19997, Start Num: 23

Candidate Starts for MZKinsey_20:

(9, 18657), (22, 18816), (Start: 23 @18861 has 72 MA's), (47, 18939), (48, 18942), (50, 18945), (54, 18957), (61, 18975), (68, 19008), (72, 19023), (86, 19104), (111, 19218), (113, 19230), (125, 19317), (127, 19338), (143, 19434), (158, 19512), (176, 19665), (192, 19758), (203, 19848), (211, 19902), (215, 19917), (216, 19920), (218, 19935), (223, 19980), (224, 19983),

Gene: MacKat_25 Start: 19491, Stop: 20573, Start Num: 33

Candidate Starts for MacKat_25:

(Start: 33 @19491 has 134 MA's), (69, 19599), (73, 19617), (75, 19635), (116, 19830), (117, 19833), (125, 19902), (139, 19974), (154, 20076), (189, 20310), (198, 20370), (204, 20424), (220, 20517), (225, 20556),

Gene: MacnCheese_25 Start: 20145, Stop: 21233, Start Num: 38

Candidate Starts for MacnCheese_25:

(Start: 38 @20145 has 43 MA's), (44, 20157), (45, 20160), (61, 20211), (66, 20223), (69, 20247), (73, 20265), (75, 20283), (79, 20298), (91, 20364), (99, 20394), (110, 20460), (117, 20493), (125, 20562), (130, 20595), (142, 20661), (153, 20733), (154, 20736), (189, 20970), (194, 21003), (206, 21102), (211, 21132), (220, 21177), (221, 21201), (225, 21216),

Gene: Maco6_21 Start: 17553, Stop: 18653, Start Num: 32

Candidate Starts for Maco6_21:

(Start: 32 @17553 has 2 MA's), (46, 17589), (53, 17616), (58, 17628), (72, 17685), (78, 17718), (79, 17724), (92, 17796), (142, 18075), (170, 18252), (173, 18285), (175, 18294), (176, 18309), (183, 18345), (191, 18399), (208, 18525), (213, 18564), (221, 18624), (226, 18645),

Gene: MalagasyRose_26 Start: 19070, Stop: 20185, Start Num: 36

Candidate Starts for MalagasyRose_26:

(30, 19046), (Start: 36 @19070 has 1 MA's), (Start: 40 @19079 has 2 MA's), (47, 19106), (76, 19217), (81, 19235), (90, 19292), (103, 19346), (116, 19436), (118, 19442), (119, 19445), (123, 19493), (124, 19496), (129, 19523), (146, 19637), (149, 19649), (152, 19670), (166, 19721), (169, 19739), (178, 19835), (179, 19838), (184, 19871), (187, 19889), (189, 19904), (194, 19937), (200, 19979), (208, 20045), (213, 20084), (221, 20144), (224, 20156), (225, 20159),

Gene: Maliketh_20 Start: 18861, Stop: 19997, Start Num: 23

Candidate Starts for Maliketh_20:

(9, 18657), (22, 18816), (Start: 23 @18861 has 72 MA's), (47, 18939), (48, 18942), (50, 18945), (54, 18957), (61, 18975), (68, 19008), (72, 19023), (86, 19104), (111, 19218), (113, 19230), (125, 19317), (127, 19338), (143, 19434), (158, 19512), (176, 19665), (192, 19758), (203, 19848), (211, 19902), (215, 19917), (216, 19920), (218, 19935), (223, 19980), (224, 19983),

Gene: Malthus_27 Start: 20849, Stop: 21946, Start Num: 38

Candidate Starts for Malthus_27:

(12, 20600), (15, 20627), (26, 20798), (Start: 38 @20849 has 43 MA's), (44, 20861), (73, 20969), (79, 21002), (111, 21158), (117, 21185), (125, 21254), (130, 21287), (150, 21404), (154, 21428), (163, 21470), (169, 21497), (192, 21680), (206, 21794), (208, 21803), (225, 21908),

Gene: Marcoliusprime_21 Start: 17339, Stop: 18418, Start Num: 38

Candidate Starts for Marcoliusprime_21:

(20, 17198), (Start: 38 @17339 has 43 MA's), (64, 17414), (69, 17441), (72, 17453), (73, 17459), (79, 17492), (117, 17675), (122, 17723), (125, 17744), (140, 17825), (154, 17918), (161, 17945), (169, 17987), (170, 18020), (189, 18152), (200, 18227), (204, 18266), (208, 18293),

Gene: MarkPheW_25 Start: 18605, Stop: 19687, Start Num: 33

Candidate Starts for MarkPheW_25:

(Start: 33 @18605 has 134 MA's), (69, 18713), (73, 18731), (79, 18764), (87, 18809), (110, 18914), (116, 18944), (117, 18947), (125, 19016), (139, 19088), (140, 19097), (159, 19211), (161, 19217), (189, 19424), (203, 19532), (204, 19538), (208, 19565), (225, 19670),

Gene: Marmie_20 Start: 18861, Stop: 19997, Start Num: 23

Candidate Starts for Marmie_20:

(9, 18657), (22, 18816), (Start: 23 @18861 has 72 MA's), (47, 18939), (48, 18942), (50, 18945), (54, 18957), (61, 18975), (68, 19008), (72, 19023), (86, 19104), (111, 19218), (113, 19230), (125, 19317), (127, 19338), (143, 19434), (158, 19512), (176, 19665), (192, 19758), (203, 19848), (211, 19902), (215, 19917), (216, 19920), (218, 19935), (223, 19980), (224, 19983),

Gene: Marshawn_26 Start: 19229, Stop: 20311, Start Num: 33

Candidate Starts for Marshawn_26:

(Start: 33 @19229 has 134 MA's), (55, 19286), (69, 19337), (73, 19355), (87, 19433), (94, 19472), (111, 19544), (116, 19568), (117, 19571), (125, 19640), (126, 19652), (139, 19712), (154, 19814), (161, 19841), (189, 20048), (204, 20162), (221, 20279),

Gene: McMater_25 Start: 18838, Stop: 19920, Start Num: 33

Candidate Starts for McMater_25:

(Start: 33 @18838 has 134 MA's), (69, 18946), (73, 18964), (75, 18982), (110, 19147), (116, 19177), (117, 19180), (122, 19228), (130, 19282), (157, 19435), (176, 19582), (189, 19657), (200, 19732), (220, 19864), (221, 19888), (225, 19903),

Gene: Mdavu_21 Start: 19011, Stop: 20093, Start Num: 33

Candidate Starts for Mdavu_21:

(Start: 33 @19011 has 134 MA's), (55, 19068), (69, 19119), (73, 19137), (75, 19155), (87, 19215), (89, 19221), (110, 19320), (116, 19350), (117, 19353), (122, 19401), (129, 19443), (130, 19455), (154, 19596), (157, 19608), (189, 19830), (200, 19905), (206, 19962), (211, 19992), (220, 20037), (225, 20076),

Gene: MeaningOfLife_25 Start: 19450, Stop: 20532, Start Num: 33

Candidate Starts for MeaningOfLife_25:

(Start: 33 @19450 has 134 MA's), (69, 19558), (73, 19576), (75, 19594), (116, 19789), (117, 19792), (125, 19861), (139, 19933), (154, 20035), (189, 20269), (198, 20329), (204, 20383), (220, 20476), (225, 20515),

Gene: Megsy_25 Start: 19451, Stop: 20533, Start Num: 33

Candidate Starts for Megsy_25:

(Start: 33 @19451 has 134 MA's), (69, 19559), (73, 19577), (116, 19790), (117, 19793), (125, 19862), (139, 19934), (154, 20036), (189, 20270), (198, 20330), (204, 20384), (220, 20477), (225, 20516),

Gene: Mercurio_22 Start: 19624, Stop: 20760, Start Num: 24

Candidate Starts for Mercurio_22:

(4, 19333), (9, 19417), (Start: 24 @19624 has 2 MA's), (31, 19651), (42, 19681), (47, 19702), (54, 19720), (68, 19771), (73, 19792), (86, 19867), (113, 19993), (125, 20080), (127, 20101), (130, 20122), (143, 20197), (174, 20410), (176, 20428), (203, 20611), (206, 20635), (215, 20680), (216, 20683), (224, 20746), (225, 20749),

Gene: Milly_21 Start: 17339, Stop: 18418, Start Num: 38

Candidate Starts for Milly_21:

(20, 17198), (Start: 38 @17339 has 43 MA's), (64, 17414), (69, 17441), (72, 17453), (73, 17459), (79, 17492), (117, 17675), (122, 17723), (125, 17744), (140, 17825), (154, 17918), (161, 17945), (169, 17987), (170, 18020), (189, 18152), (200, 18227), (204, 18266), (208, 18293),

Gene: Miryou_23 Start: 19759, Stop: 20844, Start Num: 37

Candidate Starts for Miryou_23:

(25, 19708), (Start: 37 @19759 has 25 MA's), (50, 19795), (55, 19810), (64, 19834), (72, 19873), (87, 19957), (110, 20062), (111, 20068), (116, 20092), (117, 20095), (139, 20242), (153, 20344), (154, 20347), (189, 20581), (192, 20599), (204, 20695), (208, 20722), (220, 20788), (221, 20812),

Gene: MissDaisy_26 Start: 20688, Stop: 21785, Start Num: 38

Candidate Starts for MissDaisy_26:

(12, 20439), (15, 20466), (26, 20637), (Start: 38 @20688 has 43 MA's), (44, 20700), (73, 20808), (79, 20841), (102, 20943), (110, 20991), (111, 20997), (125, 21093), (130, 21126), (134, 21147), (150, 21243), (154, 21267), (163, 21309), (169, 21336), (192, 21519), (206, 21633), (208, 21642), (225, 21747),

Gene: Mitti_26 Start: 20849, Stop: 21946, Start Num: 38

Candidate Starts for Mitti_26:

(12, 20600), (15, 20627), (26, 20798), (Start: 38 @20849 has 43 MA's), (44, 20861), (73, 20969), (79, 21002), (111, 21158), (117, 21185), (125, 21254), (130, 21287), (139, 21326), (150, 21404), (154, 21428), (163, 21470), (169, 21497), (192, 21680), (206, 21794), (208, 21803), (225, 21908),

Gene: Mowgli_20 Start: 18861, Stop: 19997, Start Num: 23

Candidate Starts for Mowgli_20:

(9, 18657), (22, 18816), (Start: 23 @18861 has 72 MA's), (47, 18939), (48, 18942), (50, 18945), (54, 18957), (61, 18975), (68, 19008), (72, 19023), (86, 19104), (111, 19218), (113, 19230), (125, 19317), (127, 19338), (143, 19434), (158, 19512), (176, 19665), (192, 19758), (203, 19848), (211, 19902), (215, 19917), (216, 19920), (218, 19935), (223, 19980), (224, 19983),

Gene: Muddy_23 Start: 18503, Stop: 19603, Start Num: 32

Candidate Starts for Muddy_23:

(Start: 32 @18503 has 2 MA's), (46, 18539), (53, 18566), (58, 18578), (72, 18635), (78, 18668), (79, 18674), (92, 18746), (104, 18794), (142, 19025), (170, 19202), (173, 19235), (175, 19244), (176, 19259), (183, 19295), (191, 19349), (208, 19475), (213, 19514), (221, 19574), (226, 19595),

Gene: Mufasa_21 Start: 17359, Stop: 18438, Start Num: 38

Candidate Starts for Mufasa_21:

(20, 17218), (Start: 38 @17359 has 43 MA's), (64, 17434), (69, 17461), (73, 17479), (79, 17512), (117, 17695), (125, 17764), (130, 17797), (154, 17938), (161, 17965), (169, 18007), (170, 18040), (189, 18172), (200, 18247), (204, 18286), (208, 18313),

Gene: Murucutumbu_25 Start: 19434, Stop: 20516, Start Num: 33

Candidate Starts for Murucutumbu_25:

(Start: 33 @19434 has 134 MA's), (69, 19542), (73, 19560), (75, 19578), (110, 19743), (116, 19773), (117, 19776), (125, 19845), (130, 19878), (139, 19917), (154, 20019), (192, 20271), (198, 20313), (204, 20367), (220, 20460), (225, 20499),

Gene: Mynx_25 Start: 19497, Stop: 20579, Start Num: 33

Candidate Starts for Mynx_25:

(Start: 33 @19497 has 134 MA's), (69, 19605), (73, 19623), (75, 19641), (116, 19836), (117, 19839), (125, 19908), (139, 19980), (149, 20055), (154, 20082), (189, 20316), (198, 20376), (204, 20430), (220, 20523), (225, 20562),

Gene: Neighly_24 Start: 19674, Stop: 20759, Start Num: 37

Candidate Starts for Neighly_24:

(25, 19623), (Start: 37 @19674 has 25 MA's), (50, 19710), (55, 19725), (64, 19749), (72, 19788), (87, 19872), (111, 19983), (116, 20007), (117, 20010), (139, 20157), (154, 20262), (179, 20430), (189, 20496), (192, 20514), (193, 20526), (208, 20637), (220, 20703),

Gene: Neoh_20 Start: 18853, Stop: 19989, Start Num: 23

Candidate Starts for Neoh_20:

(9, 18649), (22, 18808), (Start: 23 @18853 has 72 MA's), (47, 18931), (48, 18934), (50, 18937), (54, 18949), (61, 18967), (68, 19000), (72, 19015), (86, 19096), (111, 19210), (113, 19222), (125, 19309), (127, 19330), (143, 19426), (158, 19504), (176, 19657), (192, 19750), (203, 19840), (211, 19894), (215, 19909), (216, 19912), (218, 19927), (223, 19972), (224, 19975),

Gene: Nergal_24 Start: 19590, Stop: 20708, Start Num: 35

Candidate Starts for Nergal_24:

(Start: 35 @19590 has 1 MA's), (Start: 40 @19602 has 2 MA's), (47, 19629), (63, 19671), (69, 19701), (75, 19737), (80, 19755), (81, 19758), (90, 19815), (103, 19869), (107, 19914), (118, 19965), (119, 19968), (124, 20019), (131, 20061), (132, 20064), (152, 20193), (160, 20226), (166, 20244), (169, 20262), (177, 20355), (208, 20571), (212, 20604), (213, 20610), (223, 20679),

Gene: Nibb_24 Start: 18746, Stop: 19828, Start Num: 33

Candidate Starts for Nibb_24:

(Start: 33 @18746 has 134 MA's), (55, 18803), (64, 18827), (69, 18854), (73, 18872), (79, 18905), (80, 18908), (87, 18950), (110, 19055), (116, 19085), (117, 19088), (125, 19157), (139, 19229), (154, 19331), (159, 19352), (161, 19358), (189, 19565), (203, 19673), (204, 19679), (208, 19706), (225, 19811),

Gene: Nikao_21 Start: 19023, Stop: 20105, Start Num: 33

Candidate Starts for Nikao_21:

(Start: 33 @19023 has 134 MA's), (55, 19080), (69, 19131), (73, 19149), (75, 19167), (87, 19227), (89, 19233), (110, 19332), (116, 19362), (117, 19365), (122, 19413), (129, 19455), (130, 19467), (154, 19608), (157, 19620), (189, 19842), (200, 19917), (206, 19974), (211, 20004), (220, 20049), (225, 20088),

Gene: Niklas_25 Start: 18841, Stop: 19923, Start Num: 33

Candidate Starts for Niklas_25:

(Start: 33 @18841 has 134 MA's), (69, 18949), (73, 18967), (75, 18985), (110, 19150), (116, 19180), (117, 19183), (122, 19231), (130, 19285), (157, 19438), (176, 19585), (189, 19660), (200, 19735), (220, 19867), (221, 19891), (225, 19906),

Gene: NoShow_20 Start: 17782, Stop: 18882, Start Num: 40

Candidate Starts for NoShow_20:

(Start: 40 @17782 has 2 MA's), (50, 17815), (55, 17830), (69, 17881), (72, 17893), (74, 17902), (78, 17926), (86, 17974), (94, 18010), (122, 18166), (129, 18217), (130, 18229), (139, 18268), (140, 18277), (147, 18337), (175, 18520), (202, 18715), (204, 18724), (208, 18751), (223, 18859),

Gene: November_23 Start: 19811, Stop: 20893, Start Num: 33

Candidate Starts for November_23:

(Start: 33 @19811 has 134 MA's), (61, 19883), (69, 19919), (73, 19937), (95, 20057), (109, 20117), (116, 20150), (117, 20153), (125, 20222), (130, 20255), (137, 20288), (153, 20393), (154, 20396), (189, 20630), (211, 20792), (221, 20861),

Gene: Nutello_21 Start: 19023, Stop: 20105, Start Num: 33

Candidate Starts for Nutello_21:

(Start: 33 @19023 has 134 MA's), (55, 19080), (69, 19131), (73, 19149), (75, 19167), (87, 19227), (89, 19233), (110, 19332), (116, 19362), (117, 19365), (122, 19413), (129, 19455), (130, 19467), (154, 19608), (157, 19620), (189, 19842), (200, 19917), (206, 19974), (211, 20004), (220, 20049), (225, 20088),

Gene: OctaviousRex_20 Start: 18861, Stop: 19997, Start Num: 23

Candidate Starts for OctaviousRex_20:

(9, 18657), (22, 18816), (Start: 23 @18861 has 72 MA's), (47, 18939), (48, 18942), (50, 18945), (54, 18957), (61, 18975), (68, 19008), (72, 19023), (86, 19104), (111, 19218), (113, 19230), (125, 19317), (127, 19338), (143, 19434), (158, 19512), (176, 19665), (192, 19758), (203, 19848), (211, 19902), (215, 19917), (216, 19920), (218, 19935), (223, 19980), (224, 19983),

Gene: OkiRoe_23 Start: 19775, Stop: 20860, Start Num: 37

Candidate Starts for OkiRoe_23:

(25, 19724), (Start: 37 @19775 has 25 MA's), (50, 19811), (55, 19826), (64, 19850), (72, 19889), (87, 19973), (111, 20084), (116, 20108), (117, 20111), (139, 20258), (154, 20363), (189, 20597), (192, 20615), (204, 20711), (208, 20738), (220, 20804),

Gene: Olga_20 Start: 18861, Stop: 19997, Start Num: 23

Candidate Starts for Olga_20:

(9, 18657), (22, 18816), (Start: 23 @18861 has 72 MA's), (47, 18939), (48, 18942), (50, 18945), (54, 18957), (61, 18975), (68, 19008), (72, 19023), (86, 19104), (111, 19218), (113, 19230), (125, 19317), (127, 19338), (143, 19434), (158, 19512), (176, 19665), (192, 19758), (203, 19848), (211, 19902), (215, 19917), (216, 19920), (218, 19935), (223, 19980), (224, 19983),

Gene: OmniCritical_26 Start: 20834, Stop: 21931, Start Num: 38

Candidate Starts for OmniCritical_26:

(12, 20585), (15, 20612), (26, 20783), (Start: 38 @20834 has 43 MA's), (44, 20846), (73, 20954), (79, 20987), (111, 21143), (117, 21170), (125, 21239), (130, 21272), (139, 21311), (150, 21389), (154, 21413), (163, 21455), (169, 21482), (192, 21665), (206, 21779), (208, 21788), (225, 21893),

Gene: Omnicron_24 Start: 18594, Stop: 19679, Start Num: 37

Candidate Starts for Omnicron_24:

(25, 18543), (Start: 37 @18594 has 25 MA's), (50, 18630), (55, 18645), (64, 18669), (72, 18708), (87, 18792), (111, 18903), (116, 18927), (117, 18930), (121, 18972), (139, 19077), (154, 19182), (189, 19416), (192, 19434), (193, 19446), (204, 19530), (208, 19557), (218, 19611), (220, 19623), (221, 19647),

Gene: Oscar_24 Start: 18718, Stop: 19800, Start Num: 33

Candidate Starts for Oscar_24:

(Start: 33 @18718 has 134 MA's), (45, 18739), (55, 18775), (64, 18799), (69, 18826), (73, 18844), (79, 18877), (80, 18880), (116, 19057), (117, 19060), (125, 19129), (139, 19201), (154, 19303), (179, 19471), (189, 19537), (204, 19651), (208, 19678), (210, 19690), (225, 19783),

Gene: P3MA_20 Start: 16641, Stop: 17693, Start Num: 41

Candidate Starts for P3MA_20:

(Start: 38 @16635 has 43 MA's), (Start: 41 @16641 has 1 MA's), (52, 16677), (59, 16695), (60, 16701), (67, 16728), (75, 16776), (87, 16836), (111, 16941), (112, 16947), (121, 17010), (130, 17055), (163, 17238), (174, 17340), (184, 17400), (185, 17409), (189, 17436), (192, 17454), (196, 17490), (199, 17508), (203, 17544), (204, 17550), (205, 17556), (212, 17601), (219, 17637), (225, 17673),

Gene: Pace1224_20 Start: 19051, Stop: 20202, Start Num: 23

Candidate Starts for Pace1224_20:

(Start: 23 @19051 has 72 MA's), (47, 19144), (54, 19162), (64, 19189), (68, 19213), (72, 19228), (86, 19309), (87, 19312), (113, 19435), (125, 19522), (130, 19564), (143, 19639), (153, 19699), (155, 19708), (167, 19768), (174, 19852), (176, 19870), (216, 20125),

Gene: Padfoot_25 Start: 19514, Stop: 20596, Start Num: 33

Candidate Starts for Padfoot_25:

(Start: 33 @19514 has 134 MA's), (69, 19622), (73, 19640), (75, 19658), (116, 19853), (117, 19856), (125, 19925), (139, 19997), (149, 20072), (154, 20099), (189, 20333), (198, 20393), (204, 20447), (220, 20540), (225, 20579),

Gene: Padpat_25 Start: 19474, Stop: 20556, Start Num: 33

Candidate Starts for Padpat_25:

(Start: 33 @19474 has 134 MA's), (69, 19582), (73, 19600), (75, 19618), (116, 19813), (117, 19816), (125, 19885), (139, 19957), (149, 20032), (154, 20059), (189, 20293), (198, 20353), (204, 20407), (220, 20500), (225, 20539),

Gene: Paito_20 Start: 19063, Stop: 20199, Start Num: 23

Candidate Starts for Paito_20:

(9, 18859), (22, 19018), (Start: 23 @19063 has 72 MA's), (47, 19141), (48, 19144), (54, 19159), (61, 19177), (63, 19183), (68, 19210), (72, 19225), (73, 19231), (86, 19306), (111, 19420), (113, 19432), (125, 19519), (127, 19540), (130, 19561), (143, 19636), (155, 19705), (203, 20050), (217, 20134), (223, 20182), (224, 20185),

Gene: Paola_23 Start: 19774, Stop: 20859, Start Num: 37

Candidate Starts for Paola_23:

(25, 19723), (Start: 37 @19774 has 25 MA's), (50, 19810), (55, 19825), (64, 19849), (72, 19888), (87, 19972), (111, 20083), (116, 20107), (117, 20110), (139, 20257), (154, 20362), (189, 20596), (192, 20614), (204, 20710), (208, 20737), (220, 20803),

Gene: Patt_26 Start: 20667, Stop: 21764, Start Num: 38

Candidate Starts for Patt_26:

(12, 20418), (15, 20445), (26, 20616), (Start: 38 @20667 has 43 MA's), (44, 20679), (73, 20787), (79, 20820), (102, 20922), (110, 20970), (111, 20976), (125, 21072), (130, 21105), (134, 21126), (150, 21222), (154, 21246), (163, 21288), (169, 21315), (192, 21498), (206, 21612), (208, 21621), (225, 21726),

Gene: Peanam_25 Start: 18838, Stop: 19920, Start Num: 33

Candidate Starts for Peanam_25:

(Start: 33 @18838 has 134 MA's), (69, 18946), (73, 18964), (75, 18982), (110, 19147), (116, 19177), (117, 19180), (122, 19228), (130, 19282), (157, 19435), (176, 19582), (189, 19657), (200, 19732), (220, 19864), (221, 19888), (225, 19903),

Gene: Peeb_20 Start: 18861, Stop: 19997, Start Num: 23

Candidate Starts for Peeb_20:

(9, 18657), (22, 18816), (Start: 23 @18861 has 72 MA's), (47, 18939), (48, 18942), (50, 18945), (54, 18957), (61, 18975), (68, 19008), (72, 19023), (86, 19104), (111, 19218), (113, 19230), (125, 19317),

(127, 19338), (143, 19434), (158, 19512), (176, 19665), (192, 19758), (203, 19848), (211, 19902), (215, 19917), (216, 19920), (218, 19935), (223, 19980), (224, 19983),

Gene: Peel_25 Start: 19514, Stop: 20596, Start Num: 33

Candidate Starts for Peel_25:

(Start: 33 @19514 has 134 MA's), (69, 19622), (73, 19640), (75, 19658), (116, 19853), (117, 19856), (125, 19925), (139, 19997), (149, 20072), (154, 20099), (189, 20333), (198, 20393), (204, 20447), (220, 20540), (225, 20579),

Gene: Periodt_20 Start: 18861, Stop: 19997, Start Num: 23

Candidate Starts for Periodt_20:

(9, 18657), (22, 18816), (Start: 23 @18861 has 72 MA's), (47, 18939), (48, 18942), (50, 18945), (54, 18957), (61, 18975), (68, 19008), (72, 19023), (86, 19104), (111, 19218), (113, 19230), (125, 19317), (127, 19338), (143, 19434), (158, 19512), (176, 19665), (192, 19758), (203, 19848), (211, 19902), (215, 19917), (216, 19920), (218, 19935), (223, 19980), (224, 19983),

Gene: Pharb_24 Start: 19749, Stop: 20837, Start Num: 38

Candidate Starts for Pharb_24:

(Start: 38 @19749 has 43 MA's), (44, 19761), (61, 19815), (69, 19851), (73, 19869), (91, 19968), (99, 19998), (110, 20064), (117, 20097), (125, 20166), (130, 20199), (142, 20265), (153, 20337), (154, 20340), (161, 20367), (189, 20574), (213, 20745), (214, 20748), (220, 20781), (221, 20805), (225, 20820),

Gene: PhelpsODU_24 Start: 18672, Stop: 19775, Start Num: 33

Candidate Starts for PhelpsODU_24:

(Start: 33 @18672 has 134 MA's), (Start: 41 @18687 has 1 MA's), (61, 18744), (69, 18780), (73, 18798), (110, 18981), (116, 19011), (125, 19083), (154, 19257), (161, 19305), (163, 19320), (189, 19512), (203, 19620), (220, 19719), (221, 19743), (225, 19758),

Gene: Phish_20 Start: 18861, Stop: 19997, Start Num: 23

Candidate Starts for Phish_20:

(9, 18657), (22, 18816), (Start: 23 @18861 has 72 MA's), (47, 18939), (48, 18942), (50, 18945), (54, 18957), (61, 18975), (68, 19008), (72, 19023), (86, 19104), (111, 19218), (113, 19230), (125, 19317), (127, 19338), (143, 19434), (158, 19512), (176, 19665), (192, 19758), (203, 19848), (211, 19902), (215, 19917), (216, 19920), (218, 19935), (223, 19980), (224, 19983),

Gene: Phloodle_20 Start: 18861, Stop: 19997, Start Num: 23

Candidate Starts for Phloodle_20:

(9, 18657), (22, 18816), (Start: 23 @18861 has 72 MA's), (47, 18939), (48, 18942), (50, 18945), (54, 18957), (61, 18975), (68, 19008), (72, 19023), (86, 19104), (111, 19218), (113, 19230), (125, 19317), (127, 19338), (143, 19434), (158, 19512), (176, 19665), (192, 19758), (203, 19848), (211, 19902), (215, 19917), (216, 19920), (218, 19935), (223, 19980), (224, 19983),

Gene: Phrank_24 Start: 18625, Stop: 19728, Start Num: 33

Candidate Starts for Phrank_24:

(Start: 33 @18625 has 134 MA's), (Start: 41 @18640 has 1 MA's), (61, 18697), (69, 18733), (73, 18751), (110, 18934), (116, 18964), (125, 19036), (154, 19210), (161, 19258), (163, 19273), (169, 19300), (189, 19465), (220, 19672), (221, 19696), (225, 19711),

Gene: Phreak_20 Start: 18861, Stop: 19997, Start Num: 23

Candidate Starts for Phreak_20:

(9, 18657), (22, 18816), (Start: 23 @18861 has 72 MA's), (47, 18939), (48, 18942), (50, 18945), (54, 18957), (61, 18975), (68, 19008), (72, 19023), (86, 19104), (111, 19218), (113, 19230), (125, 19317),

(127, 19338), (143, 19434), (158, 19512), (176, 19665), (192, 19758), (203, 19848), (211, 19902), (215, 19917), (216, 19920), (218, 19935), (223, 19980), (224, 19983),

Gene: Piatt_25 Start: 19514, Stop: 20596, Start Num: 33

Candidate Starts for Piatt_25:

(Start: 33 @19514 has 134 MA's), (69, 19622), (73, 19640), (75, 19658), (116, 19853), (117, 19856), (125, 19925), (139, 19997), (149, 20072), (154, 20099), (189, 20333), (198, 20393), (204, 20447), (220, 20540), (225, 20579),

Gene: PinkYoshi_20 Start: 18852, Stop: 19988, Start Num: 23

Candidate Starts for PinkYoshi_20:

(9, 18648), (22, 18807), (Start: 23 @18852 has 72 MA's), (47, 18930), (48, 18933), (50, 18936), (54, 18948), (61, 18966), (68, 18999), (72, 19014), (86, 19095), (111, 19209), (113, 19221), (125, 19308), (127, 19329), (143, 19425), (158, 19503), (176, 19656), (192, 19749), (203, 19839), (211, 19893), (215, 19908), (216, 19911), (218, 19926), (223, 19971), (224, 19974),

Gene: Pinnie_21 Start: 19612, Stop: 20757, Start Num: 23

Candidate Starts for Pinnie_21:

(Start: 23 @19612 has 72 MA's), (28, 19627), (47, 19699), (54, 19717), (68, 19768), (72, 19783), (86, 19864), (113, 19990), (125, 20077), (127, 20098), (130, 20119), (143, 20194), (155, 20263), (162, 20305), (179, 20434), (195, 20545), (206, 20632), (211, 20662),

Gene: Pisa1_24 Start: 19552, Stop: 20634, Start Num: 33

Candidate Starts for Pisa1_24:

(Start: 33 @19552 has 134 MA's), (69, 19660), (73, 19678), (75, 19696), (116, 19891), (117, 19894), (125, 19963), (154, 20137), (189, 20371), (193, 20401), (198, 20431), (204, 20485), (220, 20578),

Gene: Pisa4_24 Start: 19552, Stop: 20634, Start Num: 33

Candidate Starts for Pisa4_24:

(Start: 33 @19552 has 134 MA's), (69, 19660), (73, 19678), (75, 19696), (116, 19891), (117, 19894), (125, 19963), (154, 20137), (189, 20371), (193, 20401), (198, 20431), (204, 20485), (220, 20578),

Gene: Pixie_24 Start: 19682, Stop: 20770, Start Num: 38

Candidate Starts for Pixie_24:

(Start: 38 @19682 has 43 MA's), (44, 19694), (45, 19697), (61, 19748), (69, 19784), (73, 19802), (75, 19820), (79, 19835), (99, 19931), (110, 19997), (117, 20030), (125, 20099), (130, 20132), (142, 20198), (153, 20270), (154, 20273), (189, 20507), (194, 20540), (206, 20639), (220, 20714), (221, 20738), (225, 20753),

Gene: Plagueis_20 Start: 18861, Stop: 19997, Start Num: 23

Candidate Starts for Plagueis_20:

(9, 18657), (22, 18816), (Start: 23 @18861 has 72 MA's), (47, 18939), (48, 18942), (50, 18945), (54, 18957), (61, 18975), (68, 19008), (72, 19023), (86, 19104), (111, 19218), (113, 19230), (125, 19317), (127, 19338), (143, 19434), (158, 19512), (176, 19665), (192, 19758), (203, 19848), (211, 19902), (215, 19917), (216, 19920), (218, 19935), (223, 19980), (224, 19983),

Gene: Pokerus_24 Start: 19431, Stop: 20513, Start Num: 33

Candidate Starts for Pokerus_24:

(Start: 33 @19431 has 134 MA's), (69, 19539), (73, 19557), (75, 19575), (116, 19770), (117, 19773), (125, 19842), (139, 19914), (154, 20016), (189, 20250), (198, 20310), (204, 20364), (220, 20457), (225, 20496),

Gene: Prithvi_25 Start: 19448, Stop: 20530, Start Num: 33

Candidate Starts for Prithvi_25:

(Start: 33 @19448 has 134 MA's), (69, 19556), (73, 19574), (75, 19592), (116, 19787), (117, 19790), (125, 19859), (139, 19931), (154, 20033), (189, 20267), (198, 20327), (204, 20381), (220, 20474), (225, 20513),

Gene: Psycho_24 Start: 19805, Stop: 20890, Start Num: 37

Candidate Starts for Psycho_24:

(25, 19754), (Start: 37 @19805 has 25 MA's), (50, 19841), (55, 19856), (64, 19880), (72, 19919), (87, 20003), (111, 20114), (116, 20138), (117, 20141), (139, 20288), (154, 20393), (179, 20561), (192, 20645), (193, 20657), (208, 20768), (220, 20834),

Gene: Qhanda_27 Start: 20945, Stop: 22042, Start Num: 38

Candidate Starts for Qhanda_27:

(12, 20696), (15, 20723), (26, 20894), (Start: 38 @20945 has 43 MA's), (44, 20957), (73, 21065), (79, 21098), (111, 21254), (117, 21281), (125, 21350), (130, 21383), (139, 21422), (150, 21500), (154, 21524), (163, 21566), (169, 21593), (192, 21776), (206, 21890), (208, 21899), (225, 22004),

Gene: QuincyRose_24 Start: 19494, Stop: 20576, Start Num: 33

Candidate Starts for QuincyRose_24:

(Start: 33 @19494 has 134 MA's), (69, 19602), (73, 19620), (75, 19638), (116, 19833), (117, 19836), (125, 19905), (139, 19977), (154, 20079), (189, 20313), (198, 20373), (204, 20427), (220, 20520), (225, 20559),

Gene: Rabbs_20 Start: 18947, Stop: 20083, Start Num: 23

Candidate Starts for Rabbs_20:

(2, 18476), (5, 18674), (9, 18743), (22, 18902), (Start: 23 @18947 has 72 MA's), (47, 19025), (48, 19028), (54, 19043), (61, 19061), (68, 19094), (72, 19109), (86, 19190), (111, 19304), (113, 19316), (125, 19403), (127, 19424), (130, 19445), (143, 19520), (158, 19598), (176, 19751), (189, 19826), (199, 19898), (203, 19934), (218, 20021), (223, 20066), (224, 20069),

Gene: Ramen_25 Start: 19480, Stop: 20562, Start Num: 33

Candidate Starts for Ramen_25:

(Start: 33 @19480 has 134 MA's), (69, 19588), (73, 19606), (75, 19624), (116, 19819), (117, 19822), (125, 19891), (139, 19963), (149, 20038), (154, 20065), (189, 20299), (198, 20359), (204, 20413), (220, 20506), (225, 20545),

Gene: Rando14_24 Start: 18493, Stop: 19578, Start Num: 37

Candidate Starts for Rando14_24:

(25, 18442), (Start: 37 @18493 has 25 MA's), (55, 18544), (64, 18568), (72, 18607), (111, 18802), (116, 18826), (117, 18829), (121, 18871), (139, 18976), (154, 19081), (186, 19297), (189, 19315), (192, 19333), (204, 19429), (208, 19456), (220, 19522), (221, 19546),

Gene: Rapunzel97_25 Start: 19481, Stop: 20563, Start Num: 33

Candidate Starts for Rapunzel97_25:

(Start: 33 @19481 has 134 MA's), (69, 19589), (73, 19607), (75, 19625), (116, 19820), (117, 19823), (125, 19892), (139, 19964), (154, 20066), (189, 20300), (198, 20360), (204, 20414), (220, 20507), (225, 20546),

Gene: Rattrick_20 Start: 18861, Stop: 19997, Start Num: 23

Candidate Starts for Rattrick_20:

(9, 18657), (22, 18816), (Start: 23 @18861 has 72 MA's), (47, 18939), (48, 18942), (50, 18945), (54, 18957), (61, 18975), (68, 19008), (72, 19023), (86, 19104), (111, 19218), (113, 19230), (125, 19317), (127, 19338), (143, 19434), (158, 19512), (176, 19665), (192, 19758), (203, 19848), (211, 19902),

(215, 19917), (216, 19920), (218, 19935), (223, 19980), (224, 19983),

Gene: Remy19_20 Start: 18861, Stop: 19997, Start Num: 23

Candidate Starts for Remy19_20:

(9, 18657), (22, 18816), (Start: 23 @18861 has 72 MA's), (47, 18939), (48, 18942), (50, 18945), (54, 18957), (61, 18975), (68, 19008), (72, 19023), (86, 19104), (111, 19218), (113, 19230), (125, 19317), (127, 19338), (143, 19434), (158, 19512), (176, 19665), (192, 19758), (203, 19848), (211, 19902), (215, 19917), (216, 19920), (218, 19935), (223, 19980), (224, 19983),

Gene: Renaissance_20 Start: 18861, Stop: 19997, Start Num: 23

Candidate Starts for Renaissance_20:

(9, 18657), (22, 18816), (Start: 23 @18861 has 72 MA's), (47, 18939), (48, 18942), (50, 18945), (54, 18957), (61, 18975), (68, 19008), (72, 19023), (86, 19104), (111, 19218), (113, 19230), (125, 19317), (127, 19338), (143, 19434), (158, 19512), (176, 19665), (192, 19758), (203, 19848), (211, 19902), (215, 19917), (216, 19920), (218, 19935), (223, 19980), (224, 19983),

Gene: Reptar3000_26 Start: 20663, Stop: 21763, Start Num: 38

Candidate Starts for Reptar3000_26:

(12, 20417), (15, 20444), (26, 20615), (Start: 38 @20663 has 43 MA's), (73, 20783), (79, 20816), (89, 20867), (110, 20966), (111, 20972), (125, 21068), (130, 21101), (134, 21122), (154, 21242), (157, 21254), (169, 21311), (170, 21344), (189, 21476), (192, 21494), (206, 21608), (208, 21617), (221, 21707), (228, 21743),

Gene: Richarlison_20 Start: 18861, Stop: 19997, Start Num: 23

Candidate Starts for Richarlison_20:

(9, 18657), (22, 18816), (Start: 23 @18861 has 72 MA's), (47, 18939), (48, 18942), (50, 18945), (54, 18957), (61, 18975), (68, 19008), (72, 19023), (86, 19104), (111, 19218), (113, 19230), (125, 19317), (127, 19338), (143, 19434), (158, 19512), (176, 19665), (192, 19758), (203, 19848), (211, 19902), (215, 19917), (216, 19920), (218, 19935), (223, 19980), (224, 19983),

Gene: Richo_25 Start: 18838, Stop: 19920, Start Num: 33

Candidate Starts for Richo_25:

(Start: 33 @18838 has 134 MA's), (69, 18946), (73, 18964), (75, 18982), (110, 19147), (116, 19177), (117, 19180), (122, 19228), (130, 19282), (157, 19435), (176, 19582), (189, 19657), (200, 19732), (220, 19864), (221, 19888), (225, 19903),

Gene: Rosmarinus_25 Start: 19502, Stop: 20584, Start Num: 33

Candidate Starts for Rosmarinus_25:

(Start: 33 @19502 has 134 MA's), (69, 19610), (73, 19628), (75, 19646), (116, 19841), (117, 19844), (125, 19913), (139, 19985), (149, 20060), (154, 20087), (189, 20321), (198, 20381), (204, 20435), (220, 20528), (225, 20567),

Gene: Ruriko_20 Start: 18861, Stop: 19997, Start Num: 23

Candidate Starts for Ruriko_20:

(9, 18657), (22, 18816), (Start: 23 @18861 has 72 MA's), (47, 18939), (48, 18942), (50, 18945), (54, 18957), (61, 18975), (68, 19008), (72, 19023), (86, 19104), (111, 19218), (113, 19230), (125, 19317), (127, 19338), (143, 19434), (158, 19512), (176, 19665), (192, 19758), (203, 19848), (211, 19902), (215, 19917), (216, 19920), (218, 19935), (223, 19980), (224, 19983),

Gene: Ruthiejr_25 Start: 20557, Stop: 21654, Start Num: 38

Candidate Starts for Ruthiejr_25:

(12, 20308), (15, 20335), (26, 20506), (Start: 38 @20557 has 43 MA's), (44, 20569), (73, 20677), (79, 20710), (111, 20866), (117, 20893), (125, 20962), (130, 20995), (150, 21112), (154, 21136), (163,

21178), (169, 21205), (192, 21388), (206, 21502), (208, 21511), (225, 21616),

Gene: Salvus_24 Start: 18596, Stop: 19696, Start Num: 32

Candidate Starts for Salvus_24:

(Start: 32 @18596 has 2 MA's), (46, 18632), (53, 18659), (58, 18671), (72, 18728), (78, 18761), (79, 18767), (92, 18839), (104, 18887), (142, 19118), (152, 19187), (170, 19295), (173, 19328), (175, 19337), (176, 19352), (183, 19388), (191, 19442), (208, 19568), (221, 19667), (226, 19688),

Gene: SamScheppers_24 Start: 20464, Stop: 21561, Start Num: 38

Candidate Starts for SamScheppers_24:

(12, 20215), (15, 20242), (26, 20413), (Start: 38 @20464 has 43 MA's), (44, 20476), (73, 20584), (79, 20617), (89, 20668), (111, 20773), (117, 20800), (125, 20869), (130, 20902), (139, 20941), (150, 21019), (154, 21043), (163, 21085), (169, 21112), (192, 21295), (206, 21409), (208, 21418), (225, 21523),

Gene: SamuelLPlaqson_25 Start: 19428, Stop: 20510, Start Num: 33

Candidate Starts for SamuelLPlaqson_25:

(Start: 33 @19428 has 134 MA's), (69, 19536), (73, 19554), (75, 19572), (116, 19767), (117, 19770), (125, 19839), (130, 19872), (139, 19911), (153, 20010), (154, 20013), (169, 20082), (179, 20181), (189, 20247), (190, 20253), (192, 20265), (193, 20277), (221, 20481), (225, 20496),

Gene: Scarlett_24 Start: 18720, Stop: 19802, Start Num: 33

Candidate Starts for Scarlett_24:

(Start: 33 @18720 has 134 MA's), (45, 18741), (55, 18777), (64, 18801), (69, 18828), (73, 18846), (79, 18879), (116, 19059), (117, 19062), (125, 19131), (139, 19203), (154, 19305), (179, 19473), (189, 19539), (204, 19653), (208, 19680), (210, 19692), (225, 19785),

Gene: Schiebel_20 Start: 18861, Stop: 19997, Start Num: 23

Candidate Starts for Schiebel_20:

(9, 18657), (22, 18816), (Start: 23 @18861 has 72 MA's), (47, 18939), (48, 18942), (50, 18945), (54, 18957), (61, 18975), (68, 19008), (72, 19023), (86, 19104), (111, 19218), (113, 19230), (125, 19317), (127, 19338), (143, 19434), (158, 19512), (176, 19665), (192, 19758), (203, 19848), (211, 19902), (215, 19917), (216, 19920), (218, 19935), (223, 19980), (224, 19983),

Gene: SgtBeansprout_21 Start: 19023, Stop: 20105, Start Num: 33

Candidate Starts for SgtBeansprout_21:

(Start: 33 @19023 has 134 MA's), (55, 19080), (69, 19131), (73, 19149), (75, 19167), (87, 19227), (89, 19233), (110, 19332), (116, 19362), (117, 19365), (122, 19413), (129, 19455), (130, 19467), (154, 19608), (157, 19620), (189, 19842), (200, 19917), (206, 19974), (211, 20004), (220, 20049), (225, 20088),

Gene: ShaboiShabazz_20 Start: 18861, Stop: 19997, Start Num: 23

Candidate Starts for ShaboiShabazz_20:

(9, 18657), (22, 18816), (Start: 23 @18861 has 72 MA's), (47, 18939), (48, 18942), (50, 18945), (54, 18957), (61, 18975), (68, 19008), (72, 19023), (86, 19104), (111, 19218), (113, 19230), (125, 19317), (127, 19338), (143, 19434), (158, 19512), (176, 19665), (192, 19758), (203, 19848), (211, 19902), (215, 19917), (216, 19920), (218, 19935), (223, 19980), (224, 19983),

Gene: Shadow1_23 Start: 18520, Stop: 19602, Start Num: 33

Candidate Starts for Shadow1_23:

(Start: 33 @18520 has 134 MA's), (Start: 41 @18535 has 1 MA's), (61, 18592), (69, 18628), (73, 18646), (110, 18829), (116, 18859), (117, 18862), (125, 18931), (139, 19003), (140, 19012), (154, 19105), (159, 19126), (161, 19132), (189, 19339), (208, 19480), (220, 19546), (221, 19570), (225,

19585),

Gene: Shaobing_25 Start: 18838, Stop: 19920, Start Num: 33

Candidate Starts for Shaobing_25:

(Start: 33 @18838 has 134 MA's), (69, 18946), (73, 18964), (75, 18982), (110, 19147), (116, 19177), (117, 19180), (122, 19228), (130, 19282), (157, 19435), (176, 19582), (189, 19657), (200, 19732), (220, 19864), (221, 19888), (225, 19903),

Gene: ShedlockHolmes_24 Start: 19891, Stop: 20979, Start Num: 38

Candidate Starts for ShedlockHolmes_24:

(Start: 38 @19891 has 43 MA's), (44, 19903), (45, 19906), (61, 19957), (69, 19993), (73, 20011), (75, 20029), (79, 20044), (99, 20140), (110, 20206), (111, 20212), (117, 20239), (125, 20308), (130, 20341), (140, 20389), (142, 20407), (153, 20479), (154, 20482), (189, 20716), (194, 20749), (206, 20848), (220, 20923), (221, 20947), (225, 20962),

Gene: ShiaSurprise_25 Start: 19514, Stop: 20596, Start Num: 33

Candidate Starts for ShiaSurprise_25:

(Start: 33 @19514 has 134 MA's), (69, 19622), (73, 19640), (75, 19658), (116, 19853), (117, 19856), (125, 19925), (139, 19997), (149, 20072), (154, 20099), (189, 20333), (198, 20393), (204, 20447), (220, 20540), (225, 20579),

Gene: SirPhilip_24 Start: 18337, Stop: 19440, Start Num: 33

Candidate Starts for SirPhilip_24:

(Start: 33 @18337 has 134 MA's), (55, 18394), (64, 18418), (69, 18445), (73, 18463), (117, 18679), (125, 18748), (135, 18805), (154, 18922), (159, 18964), (161, 18970), (189, 19177), (193, 19207), (221, 19408), (225, 19423),

Gene: Sizemore_20 Start: 18862, Stop: 19998, Start Num: 23

Candidate Starts for Sizemore_20:

(9, 18658), (22, 18817), (Start: 23 @18862 has 72 MA's), (47, 18940), (48, 18943), (50, 18946), (54, 18958), (61, 18976), (68, 19009), (72, 19024), (86, 19105), (111, 19219), (113, 19231), (125, 19318), (127, 19339), (143, 19435), (158, 19513), (176, 19666), (192, 19759), (203, 19849), (211, 19903), (215, 19918), (216, 19921), (218, 19936), (223, 19981), (224, 19984),

Gene: Slarp_26 Start: 20936, Stop: 22033, Start Num: 38

Candidate Starts for Slarp_26:

(12, 20687), (15, 20714), (26, 20885), (Start: 38 @20936 has 43 MA's), (44, 20948), (73, 21056), (79, 21089), (111, 21245), (117, 21272), (125, 21341), (130, 21374), (139, 21413), (150, 21491), (154, 21515), (163, 21557), (169, 21584), (192, 21767), (206, 21881), (208, 21890), (225, 21995),

Gene: Slimphazie_25 Start: 19481, Stop: 20563, Start Num: 33

Candidate Starts for Slimphazie_25:

(Start: 33 @19481 has 134 MA's), (69, 19589), (73, 19607), (75, 19625), (116, 19820), (117, 19823), (125, 19892), (139, 19964), (154, 20066), (189, 20300), (198, 20360), (204, 20414), (220, 20507), (225, 20546),

Gene: Sneeze_20 Start: 18946, Stop: 20082, Start Num: 23

Candidate Starts for Sneeze_20:

(2, 18475), (5, 18673), (9, 18742), (22, 18901), (Start: 23 @18946 has 72 MA's), (47, 19024), (48, 19027), (54, 19042), (61, 19060), (68, 19093), (72, 19108), (86, 19189), (111, 19303), (113, 19315), (125, 19402), (127, 19423), (130, 19444), (143, 19519), (158, 19597), (176, 19750), (189, 19825), (199, 19897), (203, 19933), (218, 20020), (223, 20065), (224, 20068),

Gene: SoSeph_23 Start: 19922, Stop: 21007, Start Num: 37

Candidate Starts for SoSeph_23:

(25, 19871), (Start: 37 @19922 has 25 MA's), (50, 19958), (55, 19973), (64, 19997), (72, 20036), (87, 20120), (111, 20231), (116, 20255), (117, 20258), (139, 20405), (154, 20510), (189, 20744), (192, 20762), (204, 20858), (208, 20885), (220, 20951),

Gene: Spock_25 Start: 19514, Stop: 20596, Start Num: 33

Candidate Starts for Spock_25:

(Start: 33 @19514 has 134 MA's), (69, 19622), (73, 19640), (75, 19658), (116, 19853), (117, 19856), (125, 19925), (139, 19997), (149, 20072), (154, 20099), (189, 20333), (198, 20393), (204, 20447), (220, 20540), (225, 20579),

Gene: Stargaze_20 Start: 19298, Stop: 20440, Start Num: 23

Candidate Starts for Stargaze_20:

(Start: 23 @19298 has 72 MA's), (47, 19382), (54, 19400), (68, 19451), (72, 19466), (86, 19547), (113, 19673), (125, 19760), (130, 19802), (143, 19877), (144, 19886), (155, 19946), (162, 19988), (197, 20240), (203, 20291), (216, 20363), (225, 20429),

Gene: Stellammi_19 Start: 17362, Stop: 18444, Start Num: 43

Candidate Starts for Stellammi_19:

(Start: 43 @17362 has 1 MA's), (57, 17410), (63, 17425), (68, 17452), (78, 17500), (80, 17509), (83, 17527), (89, 17557), (94, 17593), (98, 17605), (101, 17620), (119, 17695), (120, 17722), (123, 17743), (138, 17821), (139, 17824), (165, 17968), (170, 18022), (179, 18088), (188, 18148), (193, 18184), (204, 18268), (206, 18286), (213, 18334), (222, 18400), (223, 18403), (225, 18409), (227, 18424),

Gene: Stinson_25 Start: 19449, Stop: 20531, Start Num: 33

Candidate Starts for Stinson_25:

(Start: 33 @19449 has 134 MA's), (69, 19557), (73, 19575), (75, 19593), (116, 19788), (117, 19791), (125, 19860), (130, 19893), (139, 19932), (154, 20034), (173, 20169), (189, 20268), (192, 20286), (198, 20328), (204, 20382),

Gene: Strobilo_21 Start: 17342, Stop: 18418, Start Num: 38

Candidate Starts for Strobilo_21:

(20, 17201), (Start: 38 @17342 has 43 MA's), (64, 17417), (69, 17444), (72, 17456), (73, 17462), (79, 17495), (117, 17678), (122, 17726), (125, 17747), (154, 17921), (161, 17948), (169, 17990), (170, 18023), (200, 18230), (204, 18269),

Gene: Sulley_25 Start: 19447, Stop: 20529, Start Num: 33

Candidate Starts for Sulley_25:

(Start: 33 @19447 has 134 MA's), (69, 19555), (73, 19573), (75, 19591), (116, 19786), (117, 19789), (125, 19858), (139, 19930), (149, 20005), (154, 20032), (184, 20233), (189, 20266), (198, 20326), (204, 20380), (220, 20473), (225, 20512),

Gene: Sunflower1121_23 Start: 18532, Stop: 19614, Start Num: 33

Candidate Starts for Sunflower1121_23:

(Start: 33 @18532 has 134 MA's), (Start: 41 @18547 has 1 MA's), (61, 18604), (69, 18640), (73, 18658), (110, 18841), (116, 18871), (117, 18874), (125, 18943), (139, 19015), (140, 19024), (154, 19117), (159, 19138), (161, 19144), (189, 19351), (208, 19492), (220, 19558), (221, 19582), (225, 19597),

Gene: Sweets_20 Start: 18856, Stop: 19992, Start Num: 23

Candidate Starts for Sweets_20:

(9, 18652), (22, 18811), (Start: 23 @18856 has 72 MA's), (47, 18934), (48, 18937), (50, 18940), (54, 18952), (61, 18970), (68, 19003), (72, 19018), (86, 19099), (111, 19213), (113, 19225), (125, 19312), (127, 19333), (143, 19429), (158, 19507), (176, 19660), (192, 19753), (203, 19843), (211, 19897), (215, 19912), (216, 19915), (218, 19930), (223, 19975), (224, 19978),

Gene: Syra333_24 Start: 18627, Stop: 19709, Start Num: 33

Candidate Starts for Syra333_24:

(Start: 33 @18627 has 134 MA's), (Start: 41 @18642 has 1 MA's), (61, 18699), (69, 18735), (73, 18753), (110, 18936), (114, 18954), (116, 18966), (117, 18969), (125, 19038), (139, 19110), (154, 19212), (159, 19233), (161, 19239), (189, 19446), (220, 19653), (221, 19677), (225, 19692),

Gene: TBond007_24 Start: 19681, Stop: 20769, Start Num: 38

Candidate Starts for TBond007_24:

(Start: 38 @19681 has 43 MA's), (44, 19693), (45, 19696), (61, 19747), (69, 19783), (73, 19801), (75, 19819), (79, 19834), (99, 19930), (110, 19996), (117, 20029), (125, 20098), (130, 20131), (142, 20197), (153, 20269), (154, 20272), (189, 20506), (194, 20539), (206, 20638), (220, 20713), (221, 20737), (225, 20752),

Gene: TClif_24 Start: 18685, Stop: 19767, Start Num: 34

Candidate Starts for TClif_24:

(Start: 34 @18685 has 1 MA's), (50, 18727), (69, 18793), (73, 18811), (110, 18994), (116, 19024), (117, 19027), (125, 19096), (130, 19129), (161, 19297), (189, 19504), (203, 19612), (220, 19711),

Gene: TM4_21 Start: 17408, Stop: 18484, Start Num: 38

Candidate Starts for TM4_21:

(20, 17267), (29, 17366), (Start: 38 @17408 has 43 MA's), (64, 17483), (69, 17510), (72, 17522), (73, 17528), (79, 17561), (97, 17654), (117, 17744), (125, 17813), (130, 17846), (154, 17987), (161, 18014), (169, 18056), (189, 18221), (204, 18335), (206, 18353), (208, 18362),

Gene: TPA4_22 Start: 20165, Stop: 21250, Start Num: 41

Candidate Starts for TPA4_22:

(30, 20129), (Start: 41 @20165 has 1 MA's), (55, 20210), (56, 20213), (60, 20225), (63, 20234), (68, 20261), (75, 20300), (76, 20303), (78, 20309), (80, 20318), (84, 20345), (87, 20360), (116, 20498), (131, 20591), (136, 20618), (165, 20792), (167, 20801), (168, 20804), (171, 20861), (176, 20906), (195, 21029), (213, 21155), (219, 21185),

Gene: Tachez_25 Start: 19443, Stop: 20525, Start Num: 33

Candidate Starts for Tachez_25:

(Start: 33 @19443 has 134 MA's), (69, 19551), (73, 19569), (75, 19587), (116, 19782), (117, 19785), (125, 19854), (139, 19926), (154, 20028), (189, 20262), (198, 20322), (204, 20376), (220, 20469), (225, 20508),

Gene: Taheera_20 Start: 18956, Stop: 20092, Start Num: 23

Candidate Starts for Taheera_20:

(22, 18911), (Start: 23 @18956 has 72 MA's), (47, 19034), (48, 19037), (54, 19052), (61, 19070), (68, 19103), (72, 19118), (86, 19199), (111, 19313), (113, 19325), (125, 19412), (127, 19433), (130, 19454), (143, 19529), (158, 19607), (176, 19760), (189, 19835), (199, 19907), (203, 19943), (218, 20030), (223, 20075), (224, 20078),

Gene: TaiwanKao_26 Start: 19454, Stop: 20536, Start Num: 33

Candidate Starts for TaiwanKao_26:

(Start: 33 @19454 has 134 MA's), (69, 19562), (73, 19580), (116, 19793), (117, 19796), (125, 19865), (139, 19937), (154, 20039), (189, 20273), (198, 20333), (204, 20387), (220, 20480), (225, 20519),

Gene: Taquito_24 Start: 20545, Stop: 21642, Start Num: 38

Candidate Starts for Taquito_24:

(12, 20296), (15, 20323), (26, 20494), (Start: 38 @20545 has 43 MA's), (44, 20557), (73, 20665), (79, 20698), (89, 20749), (111, 20854), (117, 20881), (125, 20950), (130, 20983), (139, 21022), (150, 21100), (154, 21124), (163, 21166), (169, 21193), (192, 21376), (206, 21490), (208, 21499), (225, 21604),

Gene: Teejan_21 Start: 19023, Stop: 20105, Start Num: 33

Candidate Starts for Teejan_21:

(Start: 33 @19023 has 134 MA's), (55, 19080), (69, 19131), (73, 19149), (75, 19167), (87, 19227), (89, 19233), (110, 19332), (116, 19362), (117, 19365), (122, 19413), (129, 19455), (130, 19467), (154, 19608), (157, 19620), (189, 19842), (200, 19917), (206, 19974), (211, 20004), (220, 20049), (225, 20088),

Gene: Terror_20 Start: 18956, Stop: 20092, Start Num: 23

Candidate Starts for Terror_20:

(22, 18911), (Start: 23 @18956 has 72 MA's), (47, 19034), (48, 19037), (54, 19052), (61, 19070), (68, 19103), (72, 19118), (86, 19199), (111, 19313), (113, 19325), (125, 19412), (127, 19433), (130, 19454), (143, 19529), (158, 19607), (176, 19760), (189, 19835), (199, 19907), (203, 19943), (218, 20030), (223, 20075), (224, 20078),

Gene: Thyatira_23 Start: 19774, Stop: 20859, Start Num: 37

Candidate Starts for Thyatira_23:

(25, 19723), (Start: 37 @19774 has 25 MA's), (50, 19810), (55, 19825), (64, 19849), (72, 19888), (87, 19972), (111, 20083), (116, 20107), (117, 20110), (139, 20257), (154, 20362), (189, 20596), (192, 20614), (204, 20710), (208, 20737), (220, 20803), (221, 20827),

Gene: Tierra_24 Start: 19346, Stop: 20449, Start Num: 33

Candidate Starts for Tierra_24:

(Start: 33 @19346 has 134 MA's), (Start: 41 @19361 has 1 MA's), (61, 19418), (69, 19454), (73, 19472), (110, 19655), (116, 19685), (125, 19757), (140, 19838), (154, 19931), (161, 19979), (163, 19994), (169, 20021), (189, 20186), (220, 20393), (221, 20417), (225, 20432),

Gene: Tigress9_24 Start: 18615, Stop: 19697, Start Num: 33

Candidate Starts for Tigress9_24:

(Start: 33 @18615 has 134 MA's), (Start: 41 @18630 has 1 MA's), (61, 18687), (69, 18723), (73, 18741), (110, 18924), (116, 18954), (117, 18957), (125, 19026), (139, 19098), (154, 19200), (159, 19221), (161, 19227), (189, 19434), (208, 19575), (220, 19641), (221, 19665), (225, 19680),

Gene: TinaBug_20 Start: 18856, Stop: 19992, Start Num: 23

Candidate Starts for TinaBug_20:

(9, 18652), (22, 18811), (Start: 23 @18856 has 72 MA's), (47, 18934), (48, 18937), (50, 18940), (54, 18952), (61, 18970), (68, 19003), (72, 19018), (86, 19099), (111, 19213), (113, 19225), (125, 19312), (127, 19333), (143, 19429), (158, 19507), (176, 19660), (192, 19753), (203, 19843), (211, 19897), (215, 19912), (216, 19915), (218, 19930), (223, 19975), (224, 19978),

Gene: TingHuaYa_25 Start: 18780, Stop: 19862, Start Num: 33

Candidate Starts for TingHuaYa_25:

(Start: 33 @18780 has 134 MA's), (69, 18888), (73, 18906), (75, 18924), (116, 19119), (117, 19122), (125, 19191), (139, 19263), (149, 19338), (154, 19365), (169, 19434), (172, 19485), (186, 19581), (189, 19599), (198, 19659), (204, 19713), (220, 19806), (225, 19845),

Gene: TiniBug_25 Start: 19425, Stop: 20507, Start Num: 33

Candidate Starts for TiniBug_25:

(Start: 33 @19425 has 134 MA's), (69, 19533), (73, 19551), (75, 19569), (109, 19731), (116, 19764), (117, 19767), (125, 19836), (130, 19869), (139, 19908), (153, 20007), (154, 20010), (169, 20079), (179, 20178), (189, 20244), (190, 20250), (192, 20262), (193, 20274), (221, 20478), (225, 20493),

Gene: Tiri_25 Start: 19486, Stop: 20568, Start Num: 33

Candidate Starts for Tiri_25:

(Start: 33 @19486 has 134 MA's), (69, 19594), (73, 19612), (75, 19630), (116, 19825), (117, 19828), (125, 19897), (154, 20071), (189, 20305), (198, 20365), (204, 20419), (220, 20512), (225, 20551),

Gene: TomBrady_20 Start: 18862, Stop: 19998, Start Num: 23

Candidate Starts for TomBrady_20:

(9, 18658), (22, 18817), (Start: 23 @18862 has 72 MA's), (47, 18940), (48, 18943), (50, 18946), (54, 18958), (61, 18976), (68, 19009), (72, 19024), (86, 19105), (111, 19219), (113, 19231), (125, 19318), (127, 19339), (143, 19435), (158, 19513), (176, 19666), (192, 19759), (203, 19849), (211, 19903), (215, 19918), (216, 19921), (218, 19936), (223, 19981), (224, 19984),

Gene: Topper_25 Start: 19514, Stop: 20596, Start Num: 33

Candidate Starts for Topper_25:

(Start: 33 @19514 has 134 MA's), (69, 19622), (73, 19640), (75, 19658), (116, 19853), (117, 19856), (125, 19925), (139, 19997), (149, 20072), (154, 20099), (189, 20333), (198, 20393), (204, 20447), (220, 20540), (225, 20579),

Gene: Torres_21 Start: 19023, Stop: 20105, Start Num: 33

Candidate Starts for Torres_21:

(Start: 33 @19023 has 134 MA's), (55, 19080), (69, 19131), (73, 19149), (75, 19167), (87, 19227), (89, 19233), (110, 19332), (116, 19362), (117, 19365), (122, 19413), (129, 19455), (130, 19467), (154, 19608), (157, 19620), (189, 19842), (200, 19917), (206, 19974), (211, 20004), (220, 20049), (225, 20088),

Gene: TreyKay_25 Start: 19448, Stop: 20530, Start Num: 33

Candidate Starts for TreyKay_25:

(Start: 33 @19448 has 134 MA's), (69, 19556), (73, 19574), (75, 19592), (116, 19787), (117, 19790), (125, 19859), (139, 19931), (154, 20033), (189, 20267), (198, 20327), (204, 20381), (220, 20474), (225, 20513),

Gene: TribbleTrouble_23 Start: 19718, Stop: 20806, Start Num: 38

Candidate Starts for TribbleTrouble_23:

(Start: 38 @19718 has 43 MA's), (44, 19730), (45, 19733), (61, 19784), (66, 19796), (69, 19820), (73, 19838), (75, 19856), (79, 19871), (87, 19916), (99, 19967), (110, 20033), (117, 20066), (125, 20135), (142, 20234), (153, 20306), (154, 20309), (189, 20543), (206, 20675), (220, 20750), (221, 20774), (225, 20789),

Gene: Trice_21 Start: 19023, Stop: 20105, Start Num: 33

Candidate Starts for Trice_21:

(Start: 33 @19023 has 134 MA's), (55, 19080), (69, 19131), (73, 19149), (75, 19167), (87, 19227), (89, 19233), (110, 19332), (116, 19362), (117, 19365), (122, 19413), (129, 19455), (130, 19467), (154, 19608), (157, 19620), (189, 19842), (200, 19917), (206, 19974), (211, 20004), (220, 20049), (225, 20088),

Gene: TruffulaTree_25 Start: 19477, Stop: 20559, Start Num: 33

Candidate Starts for TruffulaTree_25:

(Start: 33 @19477 has 134 MA's), (69, 19585), (73, 19603), (75, 19621), (116, 19816), (117, 19819), (125, 19888), (139, 19960), (149, 20035), (154, 20062), (189, 20296), (198, 20356), (204, 20410), (220, 20503), (225, 20542),

Gene: Twitch_25 Start: 19514, Stop: 20596, Start Num: 33

Candidate Starts for Twitch_25:

(Start: 33 @19514 has 134 MA's), (69, 19622), (73, 19640), (75, 19658), (116, 19853), (117, 19856), (125, 19925), (139, 19997), (149, 20072), (154, 20099), (189, 20333), (198, 20393), (204, 20447), (220, 20540), (225, 20579),

Gene: Typha_26 Start: 21990, Stop: 23429, Start Num: 7

Candidate Starts for Typha_26:

(Start: 7 @21990 has 5 MA's), (8, 22011), (10, 22029), (11, 22032), (13, 22047), (17, 22077), (18, 22116), (19, 22143), (21, 22149), (Start: 38 @22287 has 43 MA's), (62, 22356), (70, 22389), (85, 22473), (86, 22479), (105, 22608), (106, 22614), (108, 22629), (116, 22677), (118, 22683), (119, 22686), (123, 22734), (130, 22773), (133, 22791), (141, 22824), (146, 22875), (152, 22908), (162, 22968), (166, 22980), (169, 22998), (179, 23097), (189, 23163), (204, 23277), (207, 23301), (208, 23304), (219, 23373), (224, 23415),

Gene: Unicorn_24 Start: 18672, Stop: 19775, Start Num: 33

Candidate Starts for Unicorn_24:

(Start: 33 @18672 has 134 MA's), (Start: 41 @18687 has 1 MA's), (61, 18744), (69, 18780), (73, 18798), (110, 18981), (116, 19011), (125, 19083), (154, 19257), (161, 19305), (163, 19320), (189, 19512), (203, 19620), (220, 19719), (221, 19743), (225, 19758),

Gene: Urkel_25 Start: 19428, Stop: 20510, Start Num: 33

Candidate Starts for Urkel_25:

(Start: 33 @19428 has 134 MA's), (69, 19536), (73, 19554), (75, 19572), (116, 19767), (117, 19770), (125, 19839), (130, 19872), (139, 19911), (153, 20010), (154, 20013), (169, 20082), (179, 20181), (189, 20247), (190, 20253), (192, 20265), (193, 20277), (221, 20481), (225, 20496),

Gene: Validus_25 Start: 18769, Stop: 19851, Start Num: 33

Candidate Starts for Validus_25:

(Start: 33 @18769 has 134 MA's), (69, 18877), (73, 18895), (110, 19078), (116, 19108), (117, 19111), (122, 19159), (131, 19216), (154, 19354), (157, 19366), (180, 19525), (189, 19588), (200, 19663), (211, 19750), (220, 19795), (225, 19834),

Gene: Veliki_25 Start: 19517, Stop: 20599, Start Num: 33

Candidate Starts for Veliki_25:

(Start: 33 @19517 has 134 MA's), (69, 19625), (73, 19643), (75, 19661), (116, 19856), (117, 19859), (125, 19928), (139, 20000), (154, 20102), (189, 20336), (198, 20396), (204, 20450), (220, 20543), (225, 20582),

Gene: ViviJ_22 Start: 19631, Stop: 20716, Start Num: 37

Candidate Starts for ViviJ_22:

(25, 19580), (Start: 37 @19631 has 25 MA's), (50, 19667), (55, 19682), (64, 19706), (72, 19745), (87, 19829), (111, 19940), (116, 19964), (117, 19967), (139, 20114), (154, 20219), (189, 20453), (192, 20471), (204, 20567), (208, 20594), (220, 20660), (221, 20684),

Gene: Waterfoul_23 Start: 19795, Stop: 20880, Start Num: 37

Candidate Starts for Waterfoul_23:

(25, 19744), (Start: 37 @19795 has 25 MA's), (50, 19831), (55, 19846), (64, 19870), (72, 19909), (87, 19993), (111, 20104), (116, 20128), (117, 20131), (139, 20278), (154, 20383), (189, 20617), (192,

20635), (204, 20731), (208, 20758), (220, 20824), (221, 20848),

Gene: Wendigo_20 Start: 18861, Stop: 19997, Start Num: 23

Candidate Starts for Wendigo_20:

(9, 18657), (22, 18816), (Start: 23 @18861 has 72 MA's), (47, 18939), (48, 18942), (50, 18945), (54, 18957), (61, 18975), (68, 19008), (72, 19023), (86, 19104), (111, 19218), (113, 19230), (125, 19317), (127, 19338), (143, 19434), (158, 19512), (176, 19665), (192, 19758), (203, 19848), (211, 19902), (215, 19917), (216, 19920), (218, 19935), (223, 19980), (224, 19983),

Gene: Wintermute_26 Start: 20925, Stop: 22022, Start Num: 38

Candidate Starts for Wintermute_26:

(12, 20676), (15, 20703), (26, 20874), (Start: 38 @20925 has 43 MA's), (44, 20937), (73, 21045), (79, 21078), (111, 21234), (117, 21261), (125, 21330), (130, 21363), (150, 21480), (154, 21504), (163, 21546), (169, 21573), (192, 21756), (206, 21870), (208, 21879), (225, 21984),

Gene: Ximenita_25 Start: 18805, Stop: 19887, Start Num: 33

Candidate Starts for Ximenita_25:

(Start: 33 @18805 has 134 MA's), (Start: 41 @18820 has 1 MA's), (61, 18877), (69, 18913), (73, 18931), (110, 19114), (116, 19144), (117, 19147), (125, 19216), (154, 19390), (159, 19411), (161, 19417), (189, 19624), (220, 19831), (221, 19855), (225, 19870),

Gene: Y10_26 Start: 20925, Stop: 22022, Start Num: 38

Candidate Starts for Y10_26:

(12, 20676), (15, 20703), (26, 20874), (Start: 38 @20925 has 43 MA's), (44, 20937), (73, 21045), (79, 21078), (111, 21234), (117, 21261), (125, 21330), (130, 21363), (150, 21480), (154, 21504), (163, 21546), (169, 21573), (192, 21756), (206, 21870), (208, 21879), (225, 21984),

Gene: Y2_26 Start: 20925, Stop: 22022, Start Num: 38

Candidate Starts for Y2_26:

(12, 20676), (15, 20703), (26, 20874), (Start: 38 @20925 has 43 MA's), (44, 20937), (73, 21045), (79, 21078), (111, 21234), (117, 21261), (125, 21330), (130, 21363), (150, 21480), (154, 21504), (163, 21546), (169, 21573), (192, 21756), (206, 21870), (208, 21879), (225, 21984),

Gene: YangYin_20 Start: 19322, Stop: 20464, Start Num: 23

Candidate Starts for YangYin_20:

(Start: 23 @19322 has 72 MA's), (47, 19406), (54, 19424), (68, 19475), (72, 19490), (86, 19571), (113, 19697), (125, 19784), (130, 19826), (143, 19901), (144, 19910), (155, 19970), (162, 20012), (197, 20264), (203, 20315), (216, 20387), (225, 20453),

Gene: YasnayaPolyana_26 Start: 20926, Stop: 22023, Start Num: 38

Candidate Starts for YasnayaPolyana_26:

(12, 20677), (15, 20704), (26, 20875), (Start: 38 @20926 has 43 MA's), (44, 20938), (73, 21046), (79, 21079), (111, 21235), (117, 21262), (125, 21331), (130, 21364), (150, 21481), (154, 21505), (163, 21547), (169, 21574), (192, 21757), (206, 21871), (208, 21880), (225, 21985),

Gene: YoureAdopted_24 Start: 19450, Stop: 20532, Start Num: 33

Candidate Starts for YoureAdopted_24:

(Start: 33 @19450 has 134 MA's), (69, 19558), (73, 19576), (75, 19594), (116, 19789), (117, 19792), (125, 19861), (139, 19933), (154, 20035), (189, 20269), (198, 20329), (204, 20383), (220, 20476), (225, 20515),

Gene: Yuna_26 Start: 19410, Stop: 20495, Start Num: 33

Candidate Starts for Yuna_26:

(Start: 33 @19410 has 134 MA's), (Start: 39 @19422 has 1 MA's), (55, 19470), (61, 19485), (69, 19521), (73, 19539), (75, 19557), (110, 19722), (116, 19752), (117, 19755), (125, 19824), (129, 19845), (131, 19860), (161, 20025), (179, 20166), (189, 20232), (200, 20307), (203, 20340), (211, 20394), (225, 20478),

Gene: Yunkel11_25 Start: 18700, Stop: 19782, Start Num: 33

Candidate Starts for Yunkel11_25:

(Start: 33 @18700 has 134 MA's), (69, 18808), (73, 18826), (116, 19039), (117, 19042), (125, 19111), (139, 19183), (154, 19285), (189, 19519), (198, 19579), (204, 19633), (220, 19726), (225, 19765),

Gene: Zabiza_25 Start: 19481, Stop: 20563, Start Num: 33

Candidate Starts for Zabiza_25:

(Start: 33 @19481 has 134 MA's), (69, 19589), (73, 19607), (75, 19625), (116, 19820), (117, 19823), (125, 19892), (139, 19964), (154, 20066), (189, 20300), (198, 20360), (204, 20414), (220, 20507), (225, 20546),

Gene: Zavala_25 Start: 19456, Stop: 20538, Start Num: 33

Candidate Starts for Zavala_25:

(Start: 33 @19456 has 134 MA's), (69, 19564), (73, 19582), (75, 19600), (116, 19795), (117, 19798), (125, 19867), (139, 19939), (149, 20014), (154, 20041), (189, 20275), (198, 20335), (204, 20389), (220, 20482), (225, 20521),

Gene: ZoMa_20 Start: 18861, Stop: 19997, Start Num: 23

Candidate Starts for ZoMa_20:

(9, 18657), (22, 18816), (Start: 23 @18861 has 72 MA's), (47, 18939), (48, 18942), (50, 18945), (54, 18957), (61, 18975), (68, 19008), (72, 19023), (86, 19104), (111, 19218), (113, 19230), (125, 19317), (127, 19338), (143, 19434), (158, 19512), (176, 19665), (192, 19758), (203, 19848), (211, 19902), (215, 19917), (216, 19920), (218, 19935), (223, 19980), (224, 19983),

Gene: ZoeJ_21 Start: 17280, Stop: 18359, Start Num: 38

Candidate Starts for ZoeJ_21:

(20, 17139), (Start: 38 @17280 has 43 MA's), (64, 17355), (69, 17382), (73, 17400), (79, 17433), (117, 17616), (125, 17685), (130, 17718), (154, 17859), (161, 17886), (169, 17928), (170, 17961), (189, 18093), (200, 18168), (204, 18207), (208, 18234),

Gene: Zombie_20 Start: 18861, Stop: 19997, Start Num: 23

Candidate Starts for Zombie_20:

(9, 18657), (22, 18816), (Start: 23 @18861 has 72 MA's), (47, 18939), (48, 18942), (50, 18945), (54, 18957), (61, 18975), (68, 19008), (72, 19023), (86, 19104), (111, 19218), (113, 19230), (125, 19317), (127, 19338), (143, 19434), (158, 19512), (176, 19665), (192, 19758), (203, 19848), (211, 19902), (215, 19917), (216, 19920), (218, 19935), (223, 19980), (224, 19983),