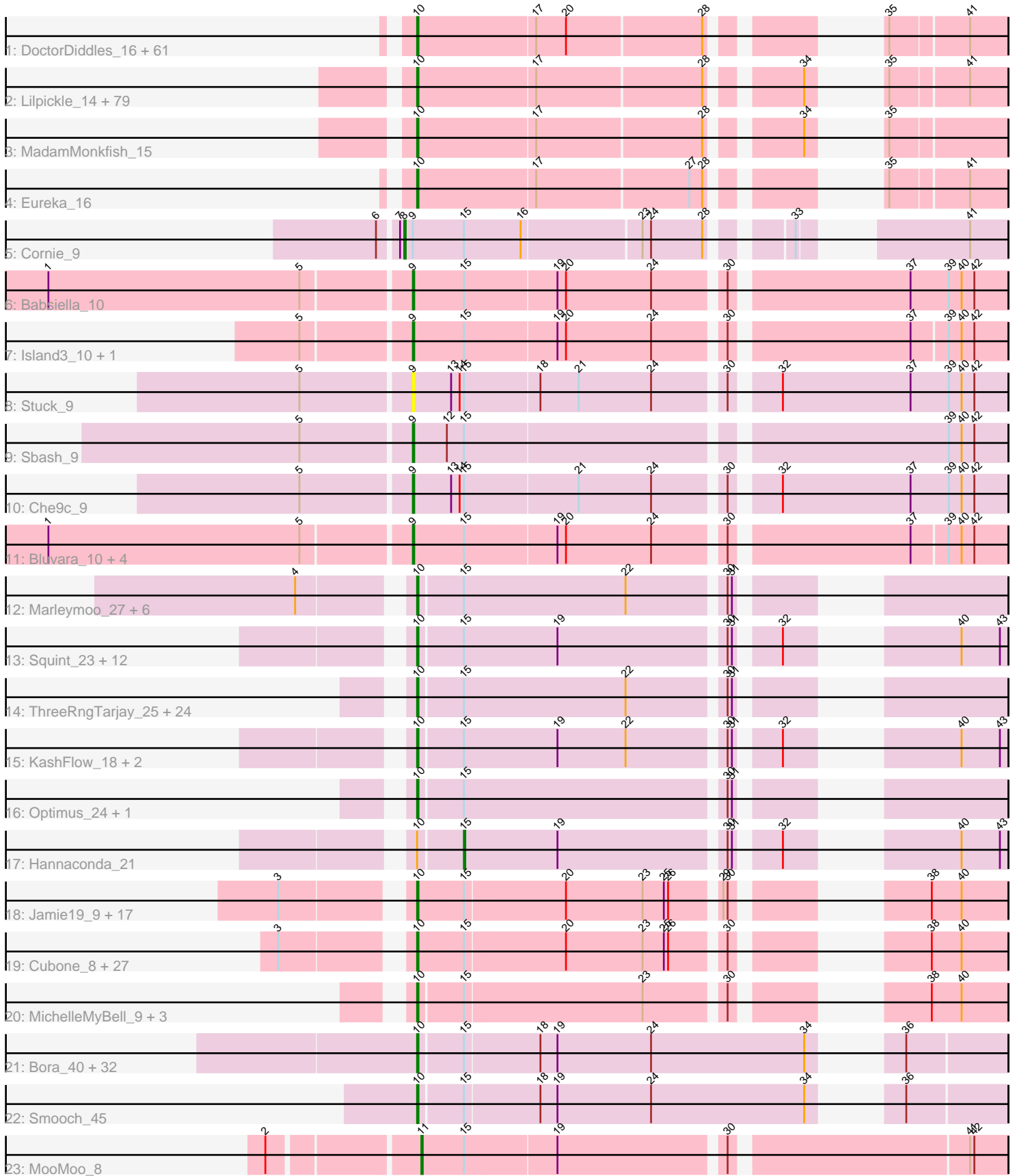


Pham 303042



Note: Tracks are now grouped by subcluster and scaled. Switching in subcluster is indicated by changes in track color. Track scale is now set by default to display the region 30 bp upstream of start 1 to 30 bp downstream of the last possible start. If this default region is judged to be packed too tightly with annotated starts, the track will be further scaled to only show that region of the ORF with annotated starts. This action will be indicated by adding "Zoomed" to the title. For starts, yellow indicates the location of called starts comprised solely of Glimmer/GeneMark auto-annotations, green indicates the location of called starts with at least 1 manual gene annotation.

Pham 303042 Report

This analysis was run 06/08/26 on database version 649.

Pham number 303042 has 292 members, 35 are drafts.

Phages represented in each track:

- Track 1 : DoctorDiddles_16, Balomoji_15, Palpatine_15, Barbarian_15, Harella_14, IHOP_15, Phaux_14, FairyPath_16, Quallification_17, Bask21_15, Rakim_17, Dusk_15, StellaBean_16, Thimble_16, Holt_17, Gator_14, CrystalP_16, Mindy_16, Tomaszewski_15, Myrale_16, Command613_17, Daikon_14, BugsBunny_13, Icee_15, Marshmallow_16, Miniwave_16, ShamWow_16, Rimmer_15, Sotrice96_16, Bruin_15, Buck_15, NelitzaMV_16, Kostya_16, Cactus_17, Liveloughbron_15, Phaja_15, TeardropMSU_15, Asriel_15, ABCat_15, Mosby_15, SophKB_16, SirDuracell_15, BilboSwaggins_16, Goldilocks_17, Sassay_15, Amao_16, Willez_15, Henry_16, Inca_15, Traaww1_14, BadStone_15, Contagion_15, Cookies_16, Flypotenuse_14, Manda_16, Tuco_16, Glexan_14, xkcd_16, Toto_16, FoghornLeghorn_15, YassJohnny_16, Nala_15
- Track 2 : Lilpickle_14, Adnama_17, BigBubba_15, FireRed_15, Petra64142_16, GoldenSpark_17, Kanye_17, Greep_16, HanKaySha_16, ShereKhan_17, Hopey_16, JeTaime_17, Terminus_15, Filch_16, Murica_14, Easy2Say_16, AmericanBeauty_17, Bench_17, Gage_17, 244_16, Maxxinista_16, Brewer_15, Hoonter_17, ChosenOne_14, Cjw1_15, Pat3_15, Ukulele_15, TBrady12_17, Misfit_15, MPhalcon_15, Becksu_15, Moldemort_16, BaboJay_15, Goku_16, Teaspoon_15, Simpliphy_16, Pumpkin_16, Czyszczon1_16, Highbury_16, Stank_17, RiverMonster_15, Xandras_17, GooberAzure_17, Argent26_17, Wiggin_17, Nimrod_15, OrionPax_16, Emmina_15, DrDrey_16, Elph10_16, Pharsalus_16, StolenFromERC_17, Paperbeatsrock_17, ChotaBhai_15, Elite2014_14, Youngblood_15, Murphy_15, Policronamos_15, MISSy_15, Lilizi_17, NonchalantPear_15, Gemini_17, PhatBacter_15, Phrux_15, PaddyBaddy_16, Lilac_17, StormChicken_16, Bogg_16, MollyToe_16, TeamEdward_16, Porky_14, Tarkin_17, Ptowny_15, Thresher_16, NoSleep_16, Stark_16, Dumbo_15, HuffyPuff_14, Kimchi_17, Saints25_16
- Track 3 : MadamMonkfish_15
- Track 4 : Eureka_16
- Track 5 : Cornie_9
- Track 6 : Babsiella_10
- Track 7 : Island3_10, Brujita_10
- Track 8 : Stuck_9
- Track 9 : Sbash_9
- Track 10 : Che9c_9
- Track 11 : Bluvara_10, QueenHazel_10, PaintedDog_9, HC_10, Xula_9
- Track 12 : Marleymoo_27, NihilNomen_25, Schatzie_24, Hughesyang_25, Hidrated_26, Dove_24, Bombitas_23

- Track 13 : Squint_23, Ariel_24, BronnyJames_18, Courthouse_24, Porcelain_24, Gonephishing_22, Superphikiman_24, Rearden_21, LittleE_24, Shaboozey_18, MiaZeal_24, Nekros_24, Nibley_19
- Track 14 : ThreeRngTarjay_25, HokkenD_21, Yeet_24, EricMillard_26, Pound_26, Kalah2_27, Dallas_26, Constella_21, Odette_25, Bobby_27, Minerva_26, Duke13_23, Phoebus_26, Wanda_27, Halley_26, Redno2_25, Bagrid_24, Ejimix_27, Xiaokay_23, Beem_26, DmpstrDiver_25, JuicyJay_28, Zelink_27, BAKA_23, Klein_26
- Track 15 : KashFlow_18, Lucky2013_24, Omega_26
- Track 16 : Optimus_24, Thibault_22
- Track 17 : Hannaconda_21
- Track 18 : Jamie19_9, Snekmaggedon_9, Nenae_9, Hanako_9, Impisi_9, Phrann_9, Spinach_9, SkinnyPete_9, Raymond7_9, Redi_9, PhancyPhin_9, SpongeBob_9, Panchino_9, ShrimpFriedEgg_9, Rebel_9, Shweta_9, BabeRuth_9, Purgamenstris_9
- Track 19 : Cubone_8, Chewbacca_9, Melville_9, Xerxes_9, Carcharodon_9, Duplicity_9, Bosection6_9, ParmesanJohn_9, Andies_9, Scitech_9, Xeno_9, Fulbright_9, Tortoise12_9, Schnauzer_9, Gex_9, EGUnicorn_9, Tapioca_9, Journey_9, Magsby_9, Aggie_9, Charlie_9, Philonius_9, Tessdabest_8, Smurph_9, Pipsqueaks_9, Phloss_9, Silvafighter_9, Silvy_9
- Track 20 : MichelleMyBell_9, Rubeelu_9, Kevin1_9, Butters_9
- Track 21 : Bora_40, Familton_44, Mori_42, Zebo_43, Corndog_45, Krili_42, Winget_44, YungJamal_46, Wildflower_43, Dylan_42, JangDynasty_43, Schuy_44, Firecracker_43, MadKillah_44, NiebruSaylor_42, Shida_43, Ashwin_44, TelAviv_40, Catdawg_43, Alkhayr_43, Blessica_44, Wogge42_42, YoyoKar_41, Ryadel_47, Vorrrps_42, KingPhillip3_42, Imara_41, Zakhe101_43, FoulBall_43, Idergollasper_43, Vagabond_43, SchoolBus_43, Murai_43
- Track 22 : Smooch_45
- Track 23 : MooMoo_8

Summary of Final Annotations (See graph section above for start numbers):

The start number called the most often in the published annotations is 10, it was called in 246 of the 257 non-draft genes in the pham.

Genes that call this "Most Annotated" start:

- 244_16, ABCat_15, Adnama_17, Aggie_9, Alkhayr_43, Amao_16, AmericanBeauty_17, Andies_9, Argent26_17, Ariel_24, Ashwin_44, Asriel_15, BAKA_23, BabeRuth_9, BaboJay_15, BadStone_15, Bagrid_24, Balomoji_15, Barbarian_15, Bask21_15, Becksu_15, Beem_26, Bench_17, BigBubba_15, BilboSwaggins_16, Blessica_44, Bobby_27, Bogg_16, Bombitas_23, Bora_40, Bosection6_9, Brewer_15, BronnyJames_18, Bruin_15, Buck_15, BugsBunny_13, Butters_9, Cactus_17, Carcharodon_9, Catdawg_43, Charlie_9, Chewbacca_9, ChosenOne_14, ChotaBhai_15, Cjw1_15, Command613_17, Constella_21, Contagion_15, Cookies_16, Corndog_45, Courthouse_24, CrystalP_16, Cubone_8, Czyszczon1_16, Daikon_14, Dallas_26, DmpstrDiver_25, DoctorDiddles_16, Dove_24, DrDrey_16, Duke13_23, Dumbo_15, Duplicity_9, Dusk_15, Dylan_42, EGUnicorn_9, Easy2Say_16, Ejimix_27, Elite2014_14, Elph10_16, Emmina_15, EricMillard_26, Eureka_16, FairyPath_16, Familton_44, Filch_16, FireRed_15, Firecracker_43, Flypotenuse_14, FoghornLeghorn_15, FoulBall_43, Fulbright_9, Gage_17, Gator_14, Gemini_17, Gex_9, Glexan_14, Goku_16, GoldenSpark_17,

Goldilocks_17, Gonephishing_22, GooberAzure_17, Greep_16, Halley_26, HanKaySha_16, Hanako_9, Harella_14, Henry_16, Hidrated_26, Highbury_16, HokkenD_21, Holt_17, Hoonter_17, Hopey_16, HufflyPuff_14, Hughesyang_25, IHOP_15, Icee_15, Idergollasper_43, Imara_41, Impisi_9, Inca_15, Jamie19_9, JangDynasty_43, JeTaime_17, Journey_9, JuicyJay_28, Kalah2_27, Kanye_17, KashFlow_18, Kevin1_9, Kimchi_17, KingPhillip3_42, Klein_26, Kostya_16, Krili_42, Lilac_17, Lilizi_17, Lilpickle_14, LittleE_24, Liveloughbron_15, Lucky2013_24, MISSy_15, MPhalcon_15, MadKillah_44, MadamMonkfish_15, Magsby_9, Manda_16, Marleymoo_27, Marshmallow_16, Maxxinista_16, Melville_9, MiaZeal_24, MichelleMyBell_9, Mindy_16, Minerva_26, Miniwave_16, Misfit_15, Moldemort_16, MollyToe_16, Mori_42, Mosby_15, Murai_43, Murica_14, Murphy_15, Myrale_16, Nala_15, Nekros_24, NelitzaMV_16, Nенаe_9, Nibley_19, NiebruSaylor_42, NihilNomen_25, Nimrod_15, NoSleep_16, NonchalantPear_15, Odette_25, Omega_26, Optimus_24, OrionPax_16, PaddyBaddy_16, Palpatine_15, Panchino_9, Paperbeatsrock_17, Parmesanjohn_9, Pat3_15, Petra64142_16, Phaja_15, PhancyPhin_9, Pharsalus_16, PhatBacter_15, Phaux_14, Philonius_9, Phloss_9, Phoebus_26, Phrann_9, Phrux_15, Pipsqueaks_9, Policronamos_15, Porcelain_24, Porky_14, Pound_26, Ptowny_15, Pumpkin_16, Purgamenstris_9, Quallification_17, Rakim_17, Raymond7_9, Rearden_21, Rebel_9, Redi_9, Redno2_25, Rimmer_15, RiverMonster_15, Rubeelu_9, Ryadel_47, Saints25_16, Sassay_15, Schatzie_24, Schnauzer_9, SchoolBus_43, Schuy_44, Scitech_9, Shaboozey_18, ShamWow_16, ShereKhan_17, Shida_43, ShrimpFriedEgg_9, Shweta_9, Silvafighter_9, Silvy_9, Simpliphy_16, SirDuracell_15, SkinnyPete_9, Smooch_45, Smurph_9, Snekmaggedon_9, SophKB_16, Sotrice96_16, Spinach_9, SpongeBob_9, Squint_23, Stank_17, Stark_16, StellaBean_16, StolenFromERC_17, StormChicken_16, Superphikiman_24, TBrady12_17, Tapioca_9, Tarkin_17, TeamEdward_16, TeardropMSU_15, Teaspoon_15, TelAviv_40, Terminus_15, Tessdabest_8, Thibault_22, Thimble_16, ThreeRngTarjay_25, Thresher_16, Tomaszewski_15, Tortoise12_9, Toto_16, Traaww1_14, Tuco_16, Ukulele_15, Vagabond_43, Vorrrps_42, Wanda_27, Wiggin_17, Wildflower_43, Willez_15, Winget_44, Wogge42_42, Xandras_17, Xen0_9, Xerxes_9, Xiaokay_23, YassJohnny_16, Yeet_24, Youngblood_15, YoyoKar_41, YungJamal_46, Zakhe101_43, Zebo_43, Zelink_27, xkcd_16,

Genes that have the "Most Annotated" start but do not call it:

- Hannaconda_21,

Genes that do not have the "Most Annotated" start:

- Babsiella_10, Bluvara_10, Brujita_10, Che9c_9, Cornie_9, HC_10, Island3_10, MooMoo_8, PaintedDog_9, QueenHazel_10, Sbash_9, Stuck_9, Xula_9,

Summary by start number:

Start 8:

- Found in 1 of 292 (0.3%) of genes in pham
- Manual Annotations of this start: 1 of 257
- Called 100.0% of time when present
- Phage (with cluster) where this start called: Cornie_9 (F5),

Start 9:

- Found in 12 of 292 (4.1%) of genes in pham
- Manual Annotations of this start: 8 of 257
- Called 91.7% of time when present

- Phage (with cluster) where this start called: Babsiella_10 (I1), Bluvara_10 (I3), Brujita_10 (I1), Che9c_9 (I2), HC_10 (I1), Island3_10 (I1), PaintedDog_9 (I1), QueenHazel_10 (I1), Sbash_9 (I2), Stuck_9 (I2), Xula_9 (I1),

Start 10:

- Found in 279 of 292 (95.5%) of genes in pham
- Manual Annotations of this start: 246 of 257
- Called 99.6% of time when present
- Phage (with cluster) where this start called: 244_16 (E), ABCat_15 (E), Adnama_17 (E), Aggie_9 (N), Alkhayr_43 (O), Amao_16 (E), AmericanBeauty_17 (E), Andies_9 (N), Argent26_17 (E), Ariel_24 (J), Ashwin_44 (O), Asriel_15 (E), BAKA_23 (J), BabeRuth_9 (N), BaboJay_15 (E), BadStone_15 (E), Bagrid_24 (J), Balomoji_15 (E), Barbarian_15 (E), Bask21_15 (E), Becksu_15 (E), Beem_26 (J), Bench_17 (E), BigBubba_15 (E), BilboSwaggins_16 (E), Blessica_44 (O), Bobby_27 (J), Bogg_16 (E), Bombitas_23 (J), Bora_40 (O), Bosection6_9 (N), Brewer_15 (E), BronnyJames_18 (J), Bruin_15 (E), Buck_15 (E), BugsBunny_13 (E), Butters_9 (N), Cactus_17 (E), Carcharodon_9 (N), Catdawg_43 (O), Charlie_9 (N), Chewbacca_9 (N), ChosenOne_14 (E), ChotaBhai_15 (E), Cjw1_15 (E), Command613_17 (E), Constella_21 (J), Contagion_15 (E), Cookies_16 (E), Corndog_45 (O), Courthouse_24 (J), CrystalP_16 (E), Cubone_8 (N), Czyszczonek_16 (E), Daikon_14 (E), Dallas_26 (J), DmpstrDiver_25 (J), DoctorDiddles_16 (E), Dove_24 (J), DrDrey_16 (E), Duke13_23 (J), Dumbo_15 (E), Duplicity_9 (N), Dusk_15 (E), Dylan_42 (O), EGUunicorn_9 (N), Easy2Say_16 (E), Ejimix_27 (J), Elite2014_14 (E), Elph10_16 (E), Emmina_15 (E), EricMillard_26 (J), Eureka_16 (E), FairyPath_16 (E), Familton_44 (O), Filch_16 (E), FireRed_15 (E), Firecracker_43 (O), Flypotenuse_14 (E), FoghornLeghorn_15 (E), FoulBall_43 (O), Fulbright_9 (N), Gage_17 (E), Gator_14 (E), Gemini_17 (E), Gex_9 (N), Glexan_14 (E), Goku_16 (E), GoldenSpark_17 (E), Goldilocks_17 (E), Gonephishing_22 (J), GooberAzure_17 (E), Greep_16 (E), Halley_26 (J), HanKaySha_16 (E), Hanako_9 (N), Harella_14 (E), Henry_16 (E), Hidrated_26 (J), Highbury_16 (E), HokkenD_21 (J), Holt_17 (E), Hoonter_17 (E), Hopey_16 (E), HufflyPuff_14 (E), Hughesyang_25 (J), IHOP_15 (E), Icee_15 (E), Idergollasper_43 (O), Imara_41 (O), Impisi_9 (N), Inca_15 (E), Jamie19_9 (N), JangDynasty_43 (O), JeTaime_17 (E), Journey_9 (N), JuicyJay_28 (J), Kalah2_27 (J), Kanye_17 (E), KashFlow_18 (J), Kevin1_9 (N), Kimchi_17 (E), KingPhillip3_42 (O), Klein_26 (J), Kostya_16 (E), Krili_42 (O), Lilac_17 (E), Lilizi_17 (E), Lilpickle_14 (E), LittleE_24 (J), Liveloughbron_15 (E), Lucky2013_24 (J), MISSy_15 (E), MPhalcon_15 (E), MadKillah_44 (O), MadamMonkfish_15 (E), Magsby_9 (N), Manda_16 (E), Marleymoo_27 (J), Marshmallow_16 (E), Maxxinista_16 (E), Melville_9 (N), MiaZeal_24 (J), MichelleMyBell_9 (N), Mindy_16 (E), Minerva_26 (J), Miniwave_16 (E), Misfit_15 (E), Moldemort_16 (E), MollyToe_16 (E), Mori_42 (O), Mosby_15 (E), Murai_43 (O), Murica_14 (E), Murphy_15 (E), Myrale_16 (E), Nala_15 (E), Nekros_24 (J), NelitzaMV_16 (E), Nenae_9 (N), Nibley_19 (J), NiebruSaylor_42 (O), NihilNomen_25 (J), Nimrod_15 (E), NoSleep_16 (E), NonchalantPear_15 (E), Odette_25 (J), Omega_26 (J), Optimus_24 (J), OrionPax_16 (E), PaddyBaddy_16 (E), Palpatine_15 (E), Panchino_9 (N), Paperbeatsrock_17 (E), Parmesanjohn_9 (N), Pat3_15 (E), Petra64142_16 (E), Phaja_15 (E), PhancyPhin_9 (N), Pharsalus_16 (E), PhatBacter_15 (E), Phaux_14 (E), Philonius_9 (N), Phloss_9 (N), Phoebus_26 (J), Phrann_9 (N), Phrux_15 (E), Pipsqueaks_9 (N), Policronamos_15 (E), Porcelain_24 (J), Porky_14 (E), Pound_26 (J), Ptowny_15 (E), Pumpkin_16 (E), Purgamenstris_9 (N), Qualification_17 (E), Rakim_17 (E), Raymond7_9 (N), Rearden_21 (J), Rebel_9 (N), Redi_9 (N), Redno2_25 (J), Rimmer_15 (E), RiverMonster_15 (E), Rubeelu_9 (N), Ryadel_47 (O), Saints25_16 (E), Sassay_15 (E), Schatzie_24 (J), Schnauzer_9 (N),

SchoolBus_43 (O), Schuy_44 (O), Scitech_9 (N), Shaboozey_18 (J), ShamWow_16 (E), ShereKhan_17 (E), Shida_43 (O), ShrimpFriedEgg_9 (N), Shweta_9 (N), Silvafighter_9 (N), Silvy_9 (N), Simpliphy_16 (E), SirDuracell_15 (E), SkinnyPete_9 (N), Smooch_45 (O), Smurph_9 (N), Snekmaggedon_9 (N), SophKB_16 (E), Sotrice96_16 (E), Spinach_9 (N), SpongeBob_9 (N), Squint_23 (J), Stank_17 (E), Stark_16 (E), StellaBean_16 (E), StolenFromERC_17 (E), StormChicken_16 (E), Superphikiman_24 (J), TBrady12_17 (E), Tapioca_9 (N), Tarkin_17 (E), TeamEdward_16 (E), TeardropMSU_15 (E), Teaspoon_15 (E), TelAviv_40 (O), Terminus_15 (E), Tessdabest_8 (N), Thibault_22 (J), Thimble_16 (E), ThreeRngTarjay_25 (J), Thresher_16 (E), Tomaszewski_15 (E), Tortoise12_9 (N), Toto_16 (E), Traaww1_14 (E), Tuco_16 (E), Ukulele_15 (E), Vagabond_43 (O), Vorrrps_42 (O), Wanda_27 (J), Wiggin_17 (E), Wildflower_43 (O), Willez_15 (E), Winget_44 (O), Wogge42_42 (O), Xandras_17 (E), Xeno_9 (N), Xerxes_9 (N), Xiaokay_23 (J), YassJohnny_16 (E), Yeet_24 (J), Youngblood_15 (E), YoyoKar_41 (O), YungJamal_46 (O), Zakhe101_43 (O), Zebo_43 (O), Zelink_27 (J), xkcd_16 (E),

Start 11:

- Found in 1 of 292 (0.3%) of genes in pham
- Manual Annotations of this start: 1 of 257
- Called 100.0% of time when present
- Phage (with cluster) where this start called: MooMoo_8 (singleton),

Start 15:

- Found in 148 of 292 (50.7%) of genes in pham
- Manual Annotations of this start: 1 of 257
- Called 0.7% of time when present
- Phage (with cluster) where this start called: Hannaconda_21 (J),

Summary by clusters:

There are 9 clusters represented in this pham: singleton, I2, E, F5, I1, I3, J, O, N,

Info for manual annotations of cluster E:

- Start number 10 was manually annotated 131 times for cluster E.

Info for manual annotations of cluster F5:

- Start number 8 was manually annotated 1 time for cluster F5.

Info for manual annotations of cluster I1:

- Start number 9 was manually annotated 6 times for cluster I1.

Info for manual annotations of cluster I2:

- Start number 9 was manually annotated 2 times for cluster I2.

Info for manual annotations of cluster J:

- Start number 10 was manually annotated 39 times for cluster J.
- Start number 15 was manually annotated 1 time for cluster J.

Info for manual annotations of cluster N:

- Start number 10 was manually annotated 46 times for cluster N.

Info for manual annotations of cluster O:

- Start number 10 was manually annotated 30 times for cluster O.

Gene Information:

Gene: 244_16 Start: 9482, Stop: 9817, Start Num: 10

Candidate Starts for 244_16:

(Start: 10 @9482 has 246 MA's), (17, 9563), (28, 9677), (34, 9728), (35, 9740), (41, 9791),

Gene: ABCat_15 Start: 10257, Stop: 10592, Start Num: 10

Candidate Starts for ABCat_15:

(Start: 10 @10257 has 246 MA's), (17, 10338), (20, 10359), (28, 10452), (35, 10515), (41, 10566),

Gene: Adnama_17 Start: 9714, Stop: 10049, Start Num: 10

Candidate Starts for Adnama_17:

(Start: 10 @9714 has 246 MA's), (17, 9795), (28, 9909), (34, 9960), (35, 9972), (41, 10023),

Gene: Aggie_9 Start: 6438, Stop: 6782, Start Num: 10

Candidate Starts for Aggie_9:

(3, 6360), (Start: 10 @6438 has 246 MA's), (Start: 15 @6471 has 1 MA's), (20, 6540), (23, 6594), (25, 6609), (26, 6612), (30, 6645), (38, 6729), (40, 6750),

Gene: Alkhayr_43 Start: 22248, Stop: 22607, Start Num: 10

Candidate Starts for Alkhayr_43:

(Start: 10 @22248 has 246 MA's), (Start: 15 @22278 has 1 MA's), (18, 22329), (19, 22341), (24, 22407), (34, 22515), (36, 22539),

Gene: Amao_16 Start: 9462, Stop: 9797, Start Num: 10

Candidate Starts for Amao_16:

(Start: 10 @9462 has 246 MA's), (17, 9543), (20, 9564), (28, 9657), (35, 9720), (41, 9771),

Gene: AmericanBeauty_17 Start: 9711, Stop: 10046, Start Num: 10

Candidate Starts for AmericanBeauty_17:

(Start: 10 @9711 has 246 MA's), (17, 9792), (28, 9906), (34, 9957), (35, 9969), (41, 10020),

Gene: Andies_9 Start: 6438, Stop: 6782, Start Num: 10

Candidate Starts for Andies_9:

(3, 6360), (Start: 10 @6438 has 246 MA's), (Start: 15 @6471 has 1 MA's), (20, 6540), (23, 6594), (25, 6609), (26, 6612), (30, 6645), (38, 6729), (40, 6750),

Gene: Argent26_17 Start: 9714, Stop: 10049, Start Num: 10

Candidate Starts for Argent26_17:

(Start: 10 @9714 has 246 MA's), (17, 9795), (28, 9909), (34, 9960), (35, 9972), (41, 10023),

Gene: Ariel_24 Start: 14093, Stop: 14437, Start Num: 10

Candidate Starts for Ariel_24:

(Start: 10 @14093 has 246 MA's), (Start: 15 @14123 has 1 MA's), (19, 14189), (30, 14300), (31, 14303), (32, 14327), (40, 14405), (43, 14432),

Gene: Ashwin_44 Start: 22246, Stop: 22605, Start Num: 10

Candidate Starts for Ashwin_44:

(Start: 10 @22246 has 246 MA's), (Start: 15 @22276 has 1 MA's), (18, 22327), (19, 22339), (24, 22405), (34, 22513), (36, 22537),

Gene: Asriel_15 Start: 9129, Stop: 9464, Start Num: 10

Candidate Starts for Asriel_15:

(Start: 10 @9129 has 246 MA's), (17, 9210), (20, 9231), (28, 9324), (35, 9387), (41, 9438),

Gene: BAKA_23 Start: 16200, Stop: 16544, Start Num: 10

Candidate Starts for BAKA_23:

(Start: 10 @16200 has 246 MA's), (Start: 15 @16230 has 1 MA's), (22, 16344), (30, 16407), (31, 16410),

Gene: BabeRuth_9 Start: 6479, Stop: 6823, Start Num: 10

Candidate Starts for BabeRuth_9:

(3, 6401), (Start: 10 @6479 has 246 MA's), (Start: 15 @6512 has 1 MA's), (20, 6581), (23, 6635), (25, 6650), (26, 6653), (29, 6683), (30, 6686), (38, 6770), (40, 6791),

Gene: BaboJay_15 Start: 9793, Stop: 10128, Start Num: 10

Candidate Starts for BaboJay_15:

(Start: 10 @9793 has 246 MA's), (17, 9874), (28, 9988), (34, 10039), (35, 10051), (41, 10102),

Gene: Babsiella_10 Start: 7526, Stop: 7921, Start Num: 9

Candidate Starts for Babsiella_10:

(1, 7277), (5, 7454), (Start: 9 @7526 has 8 MA's), (Start: 15 @7562 has 1 MA's), (19, 7625), (20, 7631), (24, 7691), (30, 7736), (37, 7853), (39, 7880), (40, 7889), (42, 7898),

Gene: BadStone_15 Start: 10257, Stop: 10592, Start Num: 10

Candidate Starts for BadStone_15:

(Start: 10 @10257 has 246 MA's), (17, 10338), (20, 10359), (28, 10452), (35, 10515), (41, 10566),

Gene: Bagrid_24 Start: 15989, Stop: 16333, Start Num: 10

Candidate Starts for Bagrid_24:

(Start: 10 @15989 has 246 MA's), (Start: 15 @16019 has 1 MA's), (22, 16133), (30, 16196), (31, 16199),

Gene: Balomoji_15 Start: 9991, Stop: 10326, Start Num: 10

Candidate Starts for Balomoji_15:

(Start: 10 @9991 has 246 MA's), (17, 10072), (20, 10093), (28, 10186), (35, 10249), (41, 10300),

Gene: Barbarian_15 Start: 9129, Stop: 9464, Start Num: 10

Candidate Starts for Barbarian_15:

(Start: 10 @9129 has 246 MA's), (17, 9210), (20, 9231), (28, 9324), (35, 9387), (41, 9438),

Gene: Bask21_15 Start: 8924, Stop: 9259, Start Num: 10

Candidate Starts for Bask21_15:

(Start: 10 @8924 has 246 MA's), (17, 9005), (20, 9026), (28, 9119), (35, 9182), (41, 9233),

Gene: Becksu_15 Start: 9901, Stop: 10236, Start Num: 10

Candidate Starts for Becksu_15:

(Start: 10 @9901 has 246 MA's), (17, 9982), (28, 10096), (34, 10147), (35, 10159), (41, 10210),

Gene: Beem_26 Start: 16555, Stop: 16899, Start Num: 10

Candidate Starts for Beem_26:

(Start: 10 @16555 has 246 MA's), (Start: 15 @16585 has 1 MA's), (22, 16699), (30, 16762), (31, 16765),

Gene: Bench_17 Start: 9587, Stop: 9922, Start Num: 10

Candidate Starts for Bench_17:

(Start: 10 @9587 has 246 MA's), (17, 9668), (28, 9782), (34, 9833), (35, 9845), (41, 9896),

Gene: BigBubba_15 Start: 8970, Stop: 9305, Start Num: 10

Candidate Starts for BigBubba_15:

(Start: 10 @8970 has 246 MA's), (17, 9051), (28, 9165), (34, 9216), (35, 9228), (41, 9279),

Gene: BilboSwaggins_16 Start: 10258, Stop: 10593, Start Num: 10

Candidate Starts for BilboSwaggins_16:

(Start: 10 @10258 has 246 MA's), (17, 10339), (20, 10360), (28, 10453), (35, 10516), (41, 10567),

Gene: Blessica_44 Start: 22649, Stop: 23008, Start Num: 10

Candidate Starts for Blessica_44:

(Start: 10 @22649 has 246 MA's), (Start: 15 @22679 has 1 MA's), (18, 22730), (19, 22742), (24, 22808), (34, 22916), (36, 22940),

Gene: Bluvara_10 Start: 7527, Stop: 7919, Start Num: 9

Candidate Starts for Bluvara_10:

(1, 7278), (5, 7455), (Start: 9 @7527 has 8 MA's), (Start: 15 @7563 has 1 MA's), (19, 7626), (20, 7632), (24, 7692), (30, 7737), (37, 7854), (39, 7878), (40, 7887), (42, 7896),

Gene: Bobby_27 Start: 16508, Stop: 16852, Start Num: 10

Candidate Starts for Bobby_27:

(Start: 10 @16508 has 246 MA's), (Start: 15 @16538 has 1 MA's), (22, 16652), (30, 16715), (31, 16718),

Gene: Bogg_16 Start: 9143, Stop: 9478, Start Num: 10

Candidate Starts for Bogg_16:

(Start: 10 @9143 has 246 MA's), (17, 9224), (28, 9338), (34, 9389), (35, 9401), (41, 9452),

Gene: Bombitas_23 Start: 15865, Stop: 16209, Start Num: 10

Candidate Starts for Bombitas_23:

(4, 15799), (Start: 10 @15865 has 246 MA's), (Start: 15 @15895 has 1 MA's), (22, 16009), (30, 16072), (31, 16075),

Gene: Bora_40 Start: 21699, Stop: 22058, Start Num: 10

Candidate Starts for Bora_40:

(Start: 10 @21699 has 246 MA's), (Start: 15 @21729 has 1 MA's), (18, 21780), (19, 21792), (24, 21858), (34, 21966), (36, 21990),

Gene: Bosection6_9 Start: 6438, Stop: 6782, Start Num: 10

Candidate Starts for Bosection6_9:

(3, 6360), (Start: 10 @6438 has 246 MA's), (Start: 15 @6471 has 1 MA's), (20, 6540), (23, 6594), (25, 6609), (26, 6612), (30, 6645), (38, 6729), (40, 6750),

Gene: Brewer_15 Start: 9969, Stop: 10304, Start Num: 10

Candidate Starts for Brewer_15:

(Start: 10 @9969 has 246 MA's), (17, 10050), (28, 10164), (34, 10215), (35, 10227), (41, 10278),

Gene: BronnyJames_18 Start: 12725, Stop: 13069, Start Num: 10

Candidate Starts for BronnyJames_18:

(Start: 10 @12725 has 246 MA's), (Start: 15 @12755 has 1 MA's), (19, 12821), (30, 12932), (31, 12935), (32, 12959), (40, 13037), (43, 13064),

Gene: Bruin_15 Start: 9765, Stop: 10100, Start Num: 10

Candidate Starts for Bruin_15:

(Start: 10 @9765 has 246 MA's), (17, 9846), (20, 9867), (28, 9960), (35, 10023), (41, 10074),

Gene: Brujita_10 Start: 7530, Stop: 7922, Start Num: 9

Candidate Starts for Brujita_10:

(5, 7458), (Start: 9 @7530 has 8 MA's), (Start: 15 @7566 has 1 MA's), (19, 7629), (20, 7635), (24, 7695), (30, 7740), (37, 7857), (39, 7881), (40, 7890), (42, 7899),

Gene: Buck_15 Start: 10214, Stop: 10549, Start Num: 10

Candidate Starts for Buck_15:

(Start: 10 @10214 has 246 MA's), (17, 10295), (20, 10316), (28, 10409), (35, 10472), (41, 10523),

Gene: BugsBunny_13 Start: 9331, Stop: 9666, Start Num: 10

Candidate Starts for BugsBunny_13:

(Start: 10 @9331 has 246 MA's), (17, 9412), (20, 9433), (28, 9526), (35, 9589), (41, 9640),

Gene: Butters_9 Start: 6458, Stop: 6799, Start Num: 10

Candidate Starts for Butters_9:

(Start: 10 @6458 has 246 MA's), (Start: 15 @6488 has 1 MA's), (23, 6611), (30, 6662), (38, 6746), (40, 6767),

Gene: Cactus_17 Start: 9470, Stop: 9805, Start Num: 10

Candidate Starts for Cactus_17:

(Start: 10 @9470 has 246 MA's), (17, 9551), (20, 9572), (28, 9665), (35, 9728), (41, 9779),

Gene: Carcharodon_9 Start: 6438, Stop: 6782, Start Num: 10

Candidate Starts for Carcharodon_9:

(3, 6360), (Start: 10 @6438 has 246 MA's), (Start: 15 @6471 has 1 MA's), (20, 6540), (23, 6594), (25, 6609), (26, 6612), (30, 6645), (38, 6729), (40, 6750),

Gene: Catdawg_43 Start: 22338, Stop: 22697, Start Num: 10

Candidate Starts for Catdawg_43:

(Start: 10 @22338 has 246 MA's), (Start: 15 @22368 has 1 MA's), (18, 22419), (19, 22431), (24, 22497), (34, 22605), (36, 22629),

Gene: Charlie_9 Start: 6438, Stop: 6782, Start Num: 10

Candidate Starts for Charlie_9:

(3, 6360), (Start: 10 @6438 has 246 MA's), (Start: 15 @6471 has 1 MA's), (20, 6540), (23, 6594), (25, 6609), (26, 6612), (30, 6645), (38, 6729), (40, 6750),

Gene: Che9c_9 Start: 7131, Stop: 7526, Start Num: 9

Candidate Starts for Che9c_9:

(5, 7056), (Start: 9 @7131 has 8 MA's), (13, 7158), (14, 7164), (Start: 15 @7167 has 1 MA's), (21, 7245), (24, 7296), (30, 7341), (32, 7368), (37, 7458), (39, 7485), (40, 7494), (42, 7503),

Gene: Chewbacca_9 Start: 6438, Stop: 6782, Start Num: 10

Candidate Starts for Chewbacca_9:

(3, 6360), (Start: 10 @6438 has 246 MA's), (Start: 15 @6471 has 1 MA's), (20, 6540), (23, 6594), (25, 6609), (26, 6612), (30, 6645), (38, 6729), (40, 6750),

Gene: ChosenOne_14 Start: 8934, Stop: 9269, Start Num: 10

Candidate Starts for ChosenOne_14:

(Start: 10 @8934 has 246 MA's), (17, 9015), (28, 9129), (34, 9180), (35, 9192), (41, 9243),

Gene: ChotaBhai_15 Start: 8970, Stop: 9305, Start Num: 10

Candidate Starts for ChotaBhai_15:

(Start: 10 @8970 has 246 MA's), (17, 9051), (28, 9165), (34, 9216), (35, 9228), (41, 9279),

Gene: Cjw1_15 Start: 10484, Stop: 10819, Start Num: 10

Candidate Starts for Cjw1_15:

(Start: 10 @10484 has 246 MA's), (17, 10565), (28, 10679), (34, 10730), (35, 10742), (41, 10793),

Gene: Command613_17 Start: 10526, Stop: 10861, Start Num: 10

Candidate Starts for Command613_17:

(Start: 10 @10526 has 246 MA's), (17, 10607), (20, 10628), (28, 10721), (35, 10784), (41, 10835),

Gene: Constella_21 Start: 15378, Stop: 15722, Start Num: 10

Candidate Starts for Constella_21:

(Start: 10 @15378 has 246 MA's), (Start: 15 @15408 has 1 MA's), (22, 15522), (30, 15585), (31, 15588),

Gene: Contagion_15 Start: 9765, Stop: 10100, Start Num: 10

Candidate Starts for Contagion_15:

(Start: 10 @9765 has 246 MA's), (17, 9846), (20, 9867), (28, 9960), (35, 10023), (41, 10074),

Gene: Cookies_16 Start: 10130, Stop: 10465, Start Num: 10

Candidate Starts for Cookies_16:

(Start: 10 @10130 has 246 MA's), (17, 10211), (20, 10232), (28, 10325), (35, 10388), (41, 10439),

Gene: Corndog_45 Start: 22796, Stop: 23155, Start Num: 10

Candidate Starts for Corndog_45:

(Start: 10 @22796 has 246 MA's), (Start: 15 @22826 has 1 MA's), (18, 22877), (19, 22889), (24, 22955), (34, 23063), (36, 23087),

Gene: Cornie_9 Start: 6660, Stop: 7010, Start Num: 8

Candidate Starts for Cornie_9:

(6, 6645), (7, 6657), (Start: 8 @6660 has 1 MA's), (Start: 9 @6666 has 8 MA's), (Start: 15 @6702 has 1 MA's), (16, 6741), (23, 6822), (24, 6828), (28, 6864), (33, 6906), (41, 6984),

Gene: Courthouse_24 Start: 14495, Stop: 14839, Start Num: 10

Candidate Starts for Courthouse_24:

(Start: 10 @14495 has 246 MA's), (Start: 15 @14525 has 1 MA's), (19, 14591), (30, 14702), (31, 14705), (32, 14729), (40, 14807), (43, 14834),

Gene: CrystalP_16 Start: 10258, Stop: 10593, Start Num: 10

Candidate Starts for CrystalP_16:

(Start: 10 @10258 has 246 MA's), (17, 10339), (20, 10360), (28, 10453), (35, 10516), (41, 10567),

Gene: Cubone_8 Start: 6462, Stop: 6806, Start Num: 10

Candidate Starts for Cubone_8:

(3, 6384), (Start: 10 @6462 has 246 MA's), (Start: 15 @6495 has 1 MA's), (20, 6564), (23, 6618), (25, 6633), (26, 6636), (30, 6669), (38, 6753), (40, 6774),

Gene: Czyszczone1_16 Start: 9469, Stop: 9804, Start Num: 10

Candidate Starts for Czyszczone1_16:

(Start: 10 @9469 has 246 MA's), (17, 9550), (28, 9664), (34, 9715), (35, 9727), (41, 9778),

Gene: Daikon_14 Start: 9992, Stop: 10327, Start Num: 10

Candidate Starts for Daikon_14:

(Start: 10 @9992 has 246 MA's), (17, 10073), (20, 10094), (28, 10187), (35, 10250), (41, 10301),

Gene: Dallas_26 Start: 16095, Stop: 16439, Start Num: 10

Candidate Starts for Dallas_26:

(Start: 10 @16095 has 246 MA's), (Start: 15 @16125 has 1 MA's), (22, 16239), (30, 16302), (31, 16305),

Gene: DmpstrDiver_25 Start: 16731, Stop: 17075, Start Num: 10

Candidate Starts for DmpstrDiver_25:

(Start: 10 @16731 has 246 MA's), (Start: 15 @16761 has 1 MA's), (22, 16875), (30, 16938), (31, 16941),

Gene: DoctorDiddles_16 Start: 9423, Stop: 9758, Start Num: 10

Candidate Starts for DoctorDiddles_16:

(Start: 10 @9423 has 246 MA's), (17, 9504), (20, 9525), (28, 9618), (35, 9681), (41, 9732),

Gene: Dove_24 Start: 15864, Stop: 16208, Start Num: 10

Candidate Starts for Dove_24:

(4, 15798), (Start: 10 @15864 has 246 MA's), (Start: 15 @15894 has 1 MA's), (22, 16008), (30, 16071), (31, 16074),

Gene: DrDrey_16 Start: 10210, Stop: 10545, Start Num: 10

Candidate Starts for DrDrey_16:

(Start: 10 @10210 has 246 MA's), (17, 10291), (28, 10405), (34, 10456), (35, 10468), (41, 10519),

Gene: Duke13_23 Start: 16129, Stop: 16473, Start Num: 10

Candidate Starts for Duke13_23:

(Start: 10 @16129 has 246 MA's), (Start: 15 @16159 has 1 MA's), (22, 16273), (30, 16336), (31, 16339),

Gene: Dumbo_15 Start: 9191, Stop: 9526, Start Num: 10

Candidate Starts for Dumbo_15:

(Start: 10 @9191 has 246 MA's), (17, 9272), (28, 9386), (34, 9437), (35, 9449), (41, 9500),

Gene: Duplicity_9 Start: 6438, Stop: 6782, Start Num: 10

Candidate Starts for Duplicity_9:

(3, 6360), (Start: 10 @6438 has 246 MA's), (Start: 15 @6471 has 1 MA's), (20, 6540), (23, 6594), (25, 6609), (26, 6612), (30, 6645), (38, 6729), (40, 6750),

Gene: Dusk_15 Start: 9917, Stop: 10252, Start Num: 10

Candidate Starts for Dusk_15:

(Start: 10 @9917 has 246 MA's), (17, 9998), (20, 10019), (28, 10112), (35, 10175), (41, 10226),

Gene: Dylan_42 Start: 22051, Stop: 22410, Start Num: 10

Candidate Starts for Dylan_42:

(Start: 10 @22051 has 246 MA's), (Start: 15 @22081 has 1 MA's), (18, 22132), (19, 22144), (24, 22210), (34, 22318), (36, 22342),

Gene: EGUunicorn_9 Start: 6438, Stop: 6782, Start Num: 10

Candidate Starts for EGUunicorn_9:

(3, 6360), (Start: 10 @6438 has 246 MA's), (Start: 15 @6471 has 1 MA's), (20, 6540), (23, 6594), (25, 6609), (26, 6612), (30, 6645), (38, 6729), (40, 6750),

Gene: Easy2Say_16 Start: 10457, Stop: 10792, Start Num: 10

Candidate Starts for Easy2Say_16:

(Start: 10 @10457 has 246 MA's), (17, 10538), (28, 10652), (34, 10703), (35, 10715), (41, 10766),

Gene: Ejimix_27 Start: 17305, Stop: 17649, Start Num: 10

Candidate Starts for Ejimix_27:

(Start: 10 @17305 has 246 MA's), (Start: 15 @17335 has 1 MA's), (22, 17449), (30, 17512), (31, 17515),

Gene: Elite2014_14 Start: 8934, Stop: 9269, Start Num: 10

Candidate Starts for Elite2014_14:

(Start: 10 @8934 has 246 MA's), (17, 9015), (28, 9129), (34, 9180), (35, 9192), (41, 9243),

Gene: Elph10_16 Start: 9194, Stop: 9529, Start Num: 10

Candidate Starts for Elph10_16:

(Start: 10 @9194 has 246 MA's), (17, 9275), (28, 9389), (34, 9440), (35, 9452), (41, 9503),

Gene: Emmina_15 Start: 9039, Stop: 9374, Start Num: 10

Candidate Starts for Emmina_15:

(Start: 10 @9039 has 246 MA's), (17, 9120), (28, 9234), (34, 9285), (35, 9297), (41, 9348),

Gene: EricMillard_26 Start: 16841, Stop: 17185, Start Num: 10

Candidate Starts for EricMillard_26:

(Start: 10 @16841 has 246 MA's), (Start: 15 @16871 has 1 MA's), (22, 16985), (30, 17048), (31, 17051),

Gene: Eureka_16 Start: 10237, Stop: 10572, Start Num: 10

Candidate Starts for Eureka_16:

(Start: 10 @10237 has 246 MA's), (17, 10318), (27, 10423), (28, 10432), (35, 10495), (41, 10546),

Gene: FairyPath_16 Start: 10455, Stop: 10790, Start Num: 10

Candidate Starts for FairyPath_16:

(Start: 10 @10455 has 246 MA's), (17, 10536), (20, 10557), (28, 10650), (35, 10713), (41, 10764),

Gene: Familton_44 Start: 22342, Stop: 22701, Start Num: 10

Candidate Starts for Familton_44:

(Start: 10 @22342 has 246 MA's), (Start: 15 @22372 has 1 MA's), (18, 22423), (19, 22435), (24, 22501), (34, 22609), (36, 22633),

Gene: Filch_16 Start: 9479, Stop: 9814, Start Num: 10

Candidate Starts for Filch_16:

(Start: 10 @9479 has 246 MA's), (17, 9560), (28, 9674), (34, 9725), (35, 9737), (41, 9788),

Gene: FireRed_15 Start: 9767, Stop: 10102, Start Num: 10

Candidate Starts for FireRed_15:

(Start: 10 @9767 has 246 MA's), (17, 9848), (28, 9962), (34, 10013), (35, 10025), (41, 10076),

Gene: Firecracker_43 Start: 21949, Stop: 22308, Start Num: 10

Candidate Starts for Firecracker_43:

(Start: 10 @21949 has 246 MA's), (Start: 15 @21979 has 1 MA's), (18, 22030), (19, 22042), (24, 22108), (34, 22216), (36, 22240),

Gene: Flypotenuse_14 Start: 9874, Stop: 10209, Start Num: 10

Candidate Starts for Flypotenuse_14:

(Start: 10 @9874 has 246 MA's), (17, 9955), (20, 9976), (28, 10069), (35, 10132), (41, 10183),

Gene: FoghornLeghorn_15 Start: 9762, Stop: 10097, Start Num: 10

Candidate Starts for FoghornLeghorn_15:

(Start: 10 @9762 has 246 MA's), (17, 9843), (20, 9864), (28, 9957), (35, 10020), (41, 10071),

Gene: FoulBall_43 Start: 22336, Stop: 22695, Start Num: 10

Candidate Starts for FoulBall_43:

(Start: 10 @22336 has 246 MA's), (Start: 15 @22366 has 1 MA's), (18, 22417), (19, 22429), (24, 22495), (34, 22603), (36, 22627),

Gene: Fulbright_9 Start: 6438, Stop: 6782, Start Num: 10

Candidate Starts for Fulbright_9:

(3, 6360), (Start: 10 @6438 has 246 MA's), (Start: 15 @6471 has 1 MA's), (20, 6540), (23, 6594), (25, 6609), (26, 6612), (30, 6645), (38, 6729), (40, 6750),

Gene: Gage_17 Start: 9714, Stop: 10049, Start Num: 10

Candidate Starts for Gage_17:

(Start: 10 @9714 has 246 MA's), (17, 9795), (28, 9909), (34, 9960), (35, 9972), (41, 10023),

Gene: Gator_14 Start: 9873, Stop: 10208, Start Num: 10

Candidate Starts for Gator_14:

(Start: 10 @9873 has 246 MA's), (17, 9954), (20, 9975), (28, 10068), (35, 10131), (41, 10182),

Gene: Gemini_17 Start: 9714, Stop: 10049, Start Num: 10

Candidate Starts for Gemini_17:

(Start: 10 @9714 has 246 MA's), (17, 9795), (28, 9909), (34, 9960), (35, 9972), (41, 10023),

Gene: Gex_9 Start: 6438, Stop: 6782, Start Num: 10

Candidate Starts for Gex_9:

(3, 6360), (Start: 10 @6438 has 246 MA's), (Start: 15 @6471 has 1 MA's), (20, 6540), (23, 6594), (25, 6609), (26, 6612), (30, 6645), (38, 6729), (40, 6750),

Gene: Glexan_14 Start: 9874, Stop: 10209, Start Num: 10

Candidate Starts for Glexan_14:

(Start: 10 @9874 has 246 MA's), (17, 9955), (20, 9976), (28, 10069), (35, 10132), (41, 10183),

Gene: Goku_16 Start: 9966, Stop: 10301, Start Num: 10

Candidate Starts for Goku_16:

(Start: 10 @9966 has 246 MA's), (17, 10047), (28, 10161), (34, 10212), (35, 10224), (41, 10275),

Gene: GoldenSpark_17 Start: 9714, Stop: 10049, Start Num: 10

Candidate Starts for GoldenSpark_17:

(Start: 10 @9714 has 246 MA's), (17, 9795), (28, 9909), (34, 9960), (35, 9972), (41, 10023),

Gene: Goldilocks_17 Start: 9668, Stop: 10003, Start Num: 10

Candidate Starts for Goldilocks_17:

(Start: 10 @9668 has 246 MA's), (17, 9749), (20, 9770), (28, 9863), (35, 9926), (41, 9977),

Gene: Gonephishing_22 Start: 14668, Stop: 15012, Start Num: 10

Candidate Starts for Gonephishing_22:

(Start: 10 @14668 has 246 MA's), (Start: 15 @14698 has 1 MA's), (19, 14764), (30, 14875), (31, 14878), (32, 14902), (40, 14980), (43, 15007),

Gene: GooberAzure_17 Start: 9714, Stop: 10049, Start Num: 10

Candidate Starts for GooberAzure_17:

(Start: 10 @9714 has 246 MA's), (17, 9795), (28, 9909), (34, 9960), (35, 9972), (41, 10023),

Gene: Greep_16 Start: 10044, Stop: 10379, Start Num: 10

Candidate Starts for Greep_16:

(Start: 10 @10044 has 246 MA's), (17, 10125), (28, 10239), (34, 10290), (35, 10302), (41, 10353),

Gene: HC_10 Start: 7529, Stop: 7921, Start Num: 9

Candidate Starts for HC_10:

(1, 7280), (5, 7457), (Start: 9 @7529 has 8 MA's), (Start: 15 @7565 has 1 MA's), (19, 7628), (20, 7634), (24, 7694), (30, 7739), (37, 7856), (39, 7880), (40, 7889), (42, 7898),

Gene: Halley_26 Start: 16554, Stop: 16898, Start Num: 10

Candidate Starts for Halley_26:

(Start: 10 @16554 has 246 MA's), (Start: 15 @16584 has 1 MA's), (22, 16698), (30, 16761), (31, 16764),

Gene: HanKaySha_16 Start: 9469, Stop: 9804, Start Num: 10

Candidate Starts for HanKaySha_16:

(Start: 10 @9469 has 246 MA's), (17, 9550), (28, 9664), (34, 9715), (35, 9727), (41, 9778),

Gene: Hanako_9 Start: 6479, Stop: 6823, Start Num: 10

Candidate Starts for Hanako_9:

(3, 6401), (Start: 10 @6479 has 246 MA's), (Start: 15 @6512 has 1 MA's), (20, 6581), (23, 6635), (25, 6650), (26, 6653), (29, 6683), (30, 6686), (38, 6770), (40, 6791),

Gene: Hannaconda_21 Start: 13205, Stop: 13519, Start Num: 15

Candidate Starts for Hannaconda_21:

(Start: 10 @13175 has 246 MA's), (Start: 15 @13205 has 1 MA's), (19, 13271), (30, 13382), (31, 13385), (32, 13409), (40, 13487), (43, 13514),

Gene: Harella_14 Start: 9874, Stop: 10209, Start Num: 10

Candidate Starts for Harella_14:

(Start: 10 @9874 has 246 MA's), (17, 9955), (20, 9976), (28, 10069), (35, 10132), (41, 10183),

Gene: Henry_16 Start: 10257, Stop: 10592, Start Num: 10

Candidate Starts for Henry_16:

(Start: 10 @10257 has 246 MA's), (17, 10338), (20, 10359), (28, 10452), (35, 10515), (41, 10566),

Gene: Hidrated_26 Start: 16670, Stop: 17014, Start Num: 10

Candidate Starts for Hidrated_26:

(4, 16604), (Start: 10 @16670 has 246 MA's), (Start: 15 @16700 has 1 MA's), (22, 16814), (30, 16877), (31, 16880),

Gene: Highbury_16 Start: 9388, Stop: 9723, Start Num: 10

Candidate Starts for Highbury_16:

(Start: 10 @9388 has 246 MA's), (17, 9469), (28, 9583), (34, 9634), (35, 9646), (41, 9697),

Gene: HokkenD_21 Start: 16124, Stop: 16468, Start Num: 10

Candidate Starts for HokkenD_21:

(Start: 10 @16124 has 246 MA's), (Start: 15 @16154 has 1 MA's), (22, 16268), (30, 16331), (31, 16334),

Gene: Holt_17 Start: 9541, Stop: 9876, Start Num: 10

Candidate Starts for Holt_17:

(Start: 10 @9541 has 246 MA's), (17, 9622), (20, 9643), (28, 9736), (35, 9799), (41, 9850),

Gene: Hoonter_17 Start: 9714, Stop: 10049, Start Num: 10

Candidate Starts for Hoonter_17:

(Start: 10 @9714 has 246 MA's), (17, 9795), (28, 9909), (34, 9960), (35, 9972), (41, 10023),

Gene: Hokey_16 Start: 9479, Stop: 9814, Start Num: 10

Candidate Starts for Hokey_16:

(Start: 10 @9479 has 246 MA's), (17, 9560), (28, 9674), (34, 9725), (35, 9737), (41, 9788),

Gene: HufflyPuff_14 Start: 9723, Stop: 10058, Start Num: 10

Candidate Starts for HufflyPuff_14:

(Start: 10 @9723 has 246 MA's), (17, 9804), (28, 9918), (34, 9969), (35, 9981), (41, 10032),

Gene: Hughesyang_25 Start: 16737, Stop: 17081, Start Num: 10

Candidate Starts for Hughesyang_25:

(4, 16671), (Start: 10 @16737 has 246 MA's), (Start: 15 @16767 has 1 MA's), (22, 16881), (30, 16944), (31, 16947),

Gene: IHOP_15 Start: 9917, Stop: 10252, Start Num: 10

Candidate Starts for IHOP_15:

(Start: 10 @9917 has 246 MA's), (17, 9998), (20, 10019), (28, 10112), (35, 10175), (41, 10226),

Gene: Icee_15 Start: 9917, Stop: 10252, Start Num: 10

Candidate Starts for Icee_15:

(Start: 10 @9917 has 246 MA's), (17, 9998), (20, 10019), (28, 10112), (35, 10175), (41, 10226),

Gene: Idergollasper_43 Start: 22336, Stop: 22695, Start Num: 10

Candidate Starts for Idergollasper_43:

(Start: 10 @22336 has 246 MA's), (Start: 15 @22366 has 1 MA's), (18, 22417), (19, 22429), (24, 22495), (34, 22603), (36, 22627),

Gene: Imara_41 Start: 22145, Stop: 22504, Start Num: 10

Candidate Starts for Imara_41:

(Start: 10 @22145 has 246 MA's), (Start: 15 @22175 has 1 MA's), (18, 22226), (19, 22238), (24, 22304), (34, 22412), (36, 22436),

Gene: Impisi_9 Start: 6479, Stop: 6823, Start Num: 10

Candidate Starts for Impisi_9:

(3, 6401), (Start: 10 @6479 has 246 MA's), (Start: 15 @6512 has 1 MA's), (20, 6581), (23, 6635), (25, 6650), (26, 6653), (29, 6683), (30, 6686), (38, 6770), (40, 6791),

Gene: Inca_15 Start: 8937, Stop: 9272, Start Num: 10

Candidate Starts for Inca_15:

(Start: 10 @8937 has 246 MA's), (17, 9018), (20, 9039), (28, 9132), (35, 9195), (41, 9246),

Gene: Island3_10 Start: 7530, Stop: 7922, Start Num: 9

Candidate Starts for Island3_10:

(5, 7458), (Start: 9 @7530 has 8 MA's), (Start: 15 @7566 has 1 MA's), (19, 7629), (20, 7635), (24, 7695), (30, 7740), (37, 7857), (39, 7881), (40, 7890), (42, 7899),

Gene: Jamie19_9 Start: 6479, Stop: 6823, Start Num: 10

Candidate Starts for Jamie19_9:

(3, 6401), (Start: 10 @6479 has 246 MA's), (Start: 15 @6512 has 1 MA's), (20, 6581), (23, 6635), (25, 6650), (26, 6653), (29, 6683), (30, 6686), (38, 6770), (40, 6791),

Gene: JangDynasty_43 Start: 22431, Stop: 22790, Start Num: 10

Candidate Starts for JangDynasty_43:

(Start: 10 @22431 has 246 MA's), (Start: 15 @22461 has 1 MA's), (18, 22512), (19, 22524), (24, 22590), (34, 22698), (36, 22722),

Gene: JeTaime_17 Start: 10519, Stop: 10854, Start Num: 10

Candidate Starts for JeTaime_17:

(Start: 10 @10519 has 246 MA's), (17, 10600), (28, 10714), (34, 10765), (35, 10777), (41, 10828),

Gene: Journey_9 Start: 6438, Stop: 6782, Start Num: 10

Candidate Starts for Journey_9:

(3, 6360), (Start: 10 @6438 has 246 MA's), (Start: 15 @6471 has 1 MA's), (20, 6540), (23, 6594), (25, 6609), (26, 6612), (30, 6645), (38, 6729), (40, 6750),

Gene: JuicyJay_28 Start: 17388, Stop: 17732, Start Num: 10

Candidate Starts for JuicyJay_28:

(Start: 10 @17388 has 246 MA's), (Start: 15 @17418 has 1 MA's), (22, 17532), (30, 17595), (31, 17598),

Gene: Kalah2_27 Start: 17156, Stop: 17500, Start Num: 10

Candidate Starts for Kalah2_27:

(Start: 10 @17156 has 246 MA's), (Start: 15 @17186 has 1 MA's), (22, 17300), (30, 17363), (31, 17366),

Gene: Kanye_17 Start: 10707, Stop: 11042, Start Num: 10

Candidate Starts for Kanye_17:

(Start: 10 @10707 has 246 MA's), (17, 10788), (28, 10902), (34, 10953), (35, 10965), (41, 11016),

Gene: KashFlow_18 Start: 12741, Stop: 13085, Start Num: 10

Candidate Starts for KashFlow_18:

(Start: 10 @12741 has 246 MA's), (Start: 15 @12771 has 1 MA's), (19, 12837), (22, 12885), (30, 12948), (31, 12951), (32, 12975), (40, 13053), (43, 13080),

Gene: Kevin1_9 Start: 6458, Stop: 6799, Start Num: 10

Candidate Starts for Kevin1_9:

(Start: 10 @6458 has 246 MA's), (Start: 15 @6488 has 1 MA's), (23, 6611), (30, 6662), (38, 6746), (40, 6767),

Gene: Kimchi_17 Start: 9714, Stop: 10049, Start Num: 10

Candidate Starts for Kimchi_17:

(Start: 10 @9714 has 246 MA's), (17, 9795), (28, 9909), (34, 9960), (35, 9972), (41, 10023),

Gene: KingPhillip3_42 Start: 22336, Stop: 22695, Start Num: 10

Candidate Starts for KingPhillip3_42:

(Start: 10 @22336 has 246 MA's), (Start: 15 @22366 has 1 MA's), (18, 22417), (19, 22429), (24, 22495), (34, 22603), (36, 22627),

Gene: Klein_26 Start: 16134, Stop: 16478, Start Num: 10

Candidate Starts for Klein_26:

(Start: 10 @16134 has 246 MA's), (Start: 15 @16164 has 1 MA's), (22, 16278), (30, 16341), (31, 16344),

Gene: Kostya_16 Start: 10257, Stop: 10592, Start Num: 10

Candidate Starts for Kostya_16:

(Start: 10 @10257 has 246 MA's), (17, 10338), (20, 10359), (28, 10452), (35, 10515), (41, 10566),

Gene: Krili_42 Start: 22053, Stop: 22412, Start Num: 10

Candidate Starts for Krili_42:

(Start: 10 @22053 has 246 MA's), (Start: 15 @22083 has 1 MA's), (18, 22134), (19, 22146), (24, 22212), (34, 22320), (36, 22344),

Gene: Lilac_17 Start: 9215, Stop: 9550, Start Num: 10

Candidate Starts for Lilac_17:

(Start: 10 @9215 has 246 MA's), (17, 9296), (28, 9410), (34, 9461), (35, 9473), (41, 9524),

Gene: Lilizi_17 Start: 9426, Stop: 9761, Start Num: 10

Candidate Starts for Lilizi_17:

(Start: 10 @9426 has 246 MA's), (17, 9507), (28, 9621), (34, 9672), (35, 9684), (41, 9735),

Gene: Lilpickle_14 Start: 8934, Stop: 9269, Start Num: 10

Candidate Starts for Lilpickle_14:

(Start: 10 @8934 has 246 MA's), (17, 9015), (28, 9129), (34, 9180), (35, 9192), (41, 9243),

Gene: LittleE_24 Start: 15880, Stop: 16224, Start Num: 10

Candidate Starts for LittleE_24:

(Start: 10 @15880 has 246 MA's), (Start: 15 @15910 has 1 MA's), (19, 15976), (30, 16087), (31, 16090), (32, 16114), (40, 16192), (43, 16219),

Gene: Liveloughbron_15 Start: 9855, Stop: 10190, Start Num: 10

Candidate Starts for Liveloughbron_15:

(Start: 10 @9855 has 246 MA's), (17, 9936), (20, 9957), (28, 10050), (35, 10113), (41, 10164),

Gene: Lucky2013_24 Start: 14623, Stop: 14967, Start Num: 10

Candidate Starts for Lucky2013_24:

(Start: 10 @14623 has 246 MA's), (Start: 15 @14653 has 1 MA's), (19, 14719), (22, 14767), (30, 14830), (31, 14833), (32, 14857), (40, 14935), (43, 14962),

Gene: MISSy_15 Start: 9767, Stop: 10102, Start Num: 10

Candidate Starts for MISSy_15:

(Start: 10 @9767 has 246 MA's), (17, 9848), (28, 9962), (34, 10013), (35, 10025), (41, 10076),

Gene: MPhalcon_15 Start: 9767, Stop: 10102, Start Num: 10

Candidate Starts for MPhalcon_15:

(Start: 10 @9767 has 246 MA's), (17, 9848), (28, 9962), (34, 10013), (35, 10025), (41, 10076),

Gene: MadKillah_44 Start: 22275, Stop: 22634, Start Num: 10

Candidate Starts for MadKillah_44:

(Start: 10 @22275 has 246 MA's), (Start: 15 @22305 has 1 MA's), (18, 22356), (19, 22368), (24, 22434), (34, 22542), (36, 22566),

Gene: MadamMonkfish_15 Start: 9145, Stop: 9480, Start Num: 10

Candidate Starts for MadamMonkfish_15:

(Start: 10 @9145 has 246 MA's), (17, 9226), (28, 9340), (34, 9391), (35, 9403),

Gene: Magsby_9 Start: 6438, Stop: 6782, Start Num: 10

Candidate Starts for Magsby_9:

(3, 6360), (Start: 10 @6438 has 246 MA's), (Start: 15 @6471 has 1 MA's), (20, 6540), (23, 6594), (25, 6609), (26, 6612), (30, 6645), (38, 6729), (40, 6750),

Gene: Manda_16 Start: 10227, Stop: 10562, Start Num: 10

Candidate Starts for Manda_16:

(Start: 10 @10227 has 246 MA's), (17, 10308), (20, 10329), (28, 10422), (35, 10485), (41, 10536),

Gene: Marleymoo_27 Start: 17215, Stop: 17559, Start Num: 10

Candidate Starts for Marleymoo_27:

(4, 17149), (Start: 10 @17215 has 246 MA's), (Start: 15 @17245 has 1 MA's), (22, 17359), (30, 17422), (31, 17425),

Gene: Marshmallow_16 Start: 10257, Stop: 10592, Start Num: 10

Candidate Starts for Marshmallow_16:

(Start: 10 @10257 has 246 MA's), (17, 10338), (20, 10359), (28, 10452), (35, 10515), (41, 10566),

Gene: Maxxinista_16 Start: 9194, Stop: 9529, Start Num: 10

Candidate Starts for Maxxinista_16:

(Start: 10 @9194 has 246 MA's), (17, 9275), (28, 9389), (34, 9440), (35, 9452), (41, 9503),

Gene: Melville_9 Start: 6438, Stop: 6782, Start Num: 10

Candidate Starts for Melville_9:

(3, 6360), (Start: 10 @6438 has 246 MA's), (Start: 15 @6471 has 1 MA's), (20, 6540), (23, 6594), (25, 6609), (26, 6612), (30, 6645), (38, 6729), (40, 6750),

Gene: MiaZeal_24 Start: 14314, Stop: 14658, Start Num: 10

Candidate Starts for MiaZeal_24:

(Start: 10 @14314 has 246 MA's), (Start: 15 @14344 has 1 MA's), (19, 14410), (30, 14521), (31, 14524), (32, 14548), (40, 14626), (43, 14653),

Gene: MichelleMyBell_9 Start: 6478, Stop: 6819, Start Num: 10

Candidate Starts for MichelleMyBell_9:

(Start: 10 @6478 has 246 MA's), (Start: 15 @6508 has 1 MA's), (23, 6631), (30, 6682), (38, 6766), (40, 6787),

Gene: Mindy_16 Start: 10036, Stop: 10371, Start Num: 10
Candidate Starts for Mindy_16:
(Start: 10 @10036 has 246 MA's), (17, 10117), (20, 10138), (28, 10231), (35, 10294), (41, 10345),

Gene: Minerva_26 Start: 16619, Stop: 16963, Start Num: 10
Candidate Starts for Minerva_26:
(Start: 10 @16619 has 246 MA's), (Start: 15 @16649 has 1 MA's), (22, 16763), (30, 16826), (31, 16829),

Gene: Miniwave_16 Start: 10455, Stop: 10790, Start Num: 10
Candidate Starts for Miniwave_16:
(Start: 10 @10455 has 246 MA's), (17, 10536), (20, 10557), (28, 10650), (35, 10713), (41, 10764),

Gene: Misfit_15 Start: 9811, Stop: 10146, Start Num: 10
Candidate Starts for Misfit_15:
(Start: 10 @9811 has 246 MA's), (17, 9892), (28, 10006), (34, 10057), (35, 10069), (41, 10120),

Gene: Moldemort_16 Start: 9469, Stop: 9804, Start Num: 10
Candidate Starts for Moldemort_16:
(Start: 10 @9469 has 246 MA's), (17, 9550), (28, 9664), (34, 9715), (35, 9727), (41, 9778),

Gene: MollyToe_16 Start: 10429, Stop: 10764, Start Num: 10
Candidate Starts for MollyToe_16:
(Start: 10 @10429 has 246 MA's), (17, 10510), (28, 10624), (34, 10675), (35, 10687), (41, 10738),

Gene: MooMoo_8 Start: 5816, Stop: 6202, Start Num: 11
Candidate Starts for MooMoo_8:
(2, 5720), (Start: 11 @5816 has 1 MA's), (Start: 15 @5846 has 1 MA's), (19, 5909), (30, 6020), (41, 6176), (42, 6179),

Gene: Mori_42 Start: 21924, Stop: 22283, Start Num: 10
Candidate Starts for Mori_42:
(Start: 10 @21924 has 246 MA's), (Start: 15 @21954 has 1 MA's), (18, 22005), (19, 22017), (24, 22083), (34, 22191), (36, 22215),

Gene: Mosby_15 Start: 9765, Stop: 10100, Start Num: 10
Candidate Starts for Mosby_15:
(Start: 10 @9765 has 246 MA's), (17, 9846), (20, 9867), (28, 9960), (35, 10023), (41, 10074),

Gene: Murai_43 Start: 22114, Stop: 22473, Start Num: 10
Candidate Starts for Murai_43:
(Start: 10 @22114 has 246 MA's), (Start: 15 @22144 has 1 MA's), (18, 22195), (19, 22207), (24, 22273), (34, 22381), (36, 22405),

Gene: Murica_14 Start: 9723, Stop: 10058, Start Num: 10
Candidate Starts for Murica_14:
(Start: 10 @9723 has 246 MA's), (17, 9804), (28, 9918), (34, 9969), (35, 9981), (41, 10032),

Gene: Murphy_15 Start: 9186, Stop: 9521, Start Num: 10
Candidate Starts for Murphy_15:
(Start: 10 @9186 has 246 MA's), (17, 9267), (28, 9381), (34, 9432), (35, 9444), (41, 9495),

Gene: Myrale_16 Start: 10128, Stop: 10463, Start Num: 10

Candidate Starts for Myrale_16:

(Start: 10 @10128 has 246 MA's), (17, 10209), (20, 10230), (28, 10323), (35, 10386), (41, 10437),

Gene: Nala_15 Start: 9765, Stop: 10100, Start Num: 10

Candidate Starts for Nala_15:

(Start: 10 @9765 has 246 MA's), (17, 9846), (20, 9867), (28, 9960), (35, 10023), (41, 10074),

Gene: Nekros_24 Start: 16560, Stop: 16904, Start Num: 10

Candidate Starts for Nekros_24:

(Start: 10 @16560 has 246 MA's), (Start: 15 @16590 has 1 MA's), (19, 16656), (30, 16767), (31, 16770), (32, 16794), (40, 16872), (43, 16899),

Gene: NelitzaMV_16 Start: 10327, Stop: 10662, Start Num: 10

Candidate Starts for NelitzaMV_16:

(Start: 10 @10327 has 246 MA's), (17, 10408), (20, 10429), (28, 10522), (35, 10585), (41, 10636),

Gene: Nenae_9 Start: 6479, Stop: 6823, Start Num: 10

Candidate Starts for Nenae_9:

(3, 6401), (Start: 10 @6479 has 246 MA's), (Start: 15 @6512 has 1 MA's), (20, 6581), (23, 6635), (25, 6650), (26, 6653), (29, 6683), (30, 6686), (38, 6770), (40, 6791),

Gene: Nibley_19 Start: 13242, Stop: 13586, Start Num: 10

Candidate Starts for Nibley_19:

(Start: 10 @13242 has 246 MA's), (Start: 15 @13272 has 1 MA's), (19, 13338), (30, 13449), (31, 13452), (32, 13476), (40, 13554), (43, 13581),

Gene: NiebruSaylor_42 Start: 21925, Stop: 22284, Start Num: 10

Candidate Starts for NiebruSaylor_42:

(Start: 10 @21925 has 246 MA's), (Start: 15 @21955 has 1 MA's), (18, 22006), (19, 22018), (24, 22084), (34, 22192), (36, 22216),

Gene: NihilNomen_25 Start: 16616, Stop: 16960, Start Num: 10

Candidate Starts for NihilNomen_25:

(4, 16550), (Start: 10 @16616 has 246 MA's), (Start: 15 @16646 has 1 MA's), (22, 16760), (30, 16823), (31, 16826),

Gene: Nimrod_15 Start: 9966, Stop: 10301, Start Num: 10

Candidate Starts for Nimrod_15:

(Start: 10 @9966 has 246 MA's), (17, 10047), (28, 10161), (34, 10212), (35, 10224), (41, 10275),

Gene: NoSleep_16 Start: 9466, Stop: 9801, Start Num: 10

Candidate Starts for NoSleep_16:

(Start: 10 @9466 has 246 MA's), (17, 9547), (28, 9661), (34, 9712), (35, 9724), (41, 9775),

Gene: NonchalantPear_15 Start: 9419, Stop: 9754, Start Num: 10

Candidate Starts for NonchalantPear_15:

(Start: 10 @9419 has 246 MA's), (17, 9500), (28, 9614), (34, 9665), (35, 9677), (41, 9728),

Gene: Odette_25 Start: 16097, Stop: 16441, Start Num: 10

Candidate Starts for Odette_25:

(Start: 10 @16097 has 246 MA's), (Start: 15 @16127 has 1 MA's), (22, 16241), (30, 16304), (31, 16307),

Gene: Omega_26 Start: 18240, Stop: 18584, Start Num: 10

Candidate Starts for Omega_26:

(Start: 10 @18240 has 246 MA's), (Start: 15 @18270 has 1 MA's), (19, 18336), (22, 18384), (30, 18447), (31, 18450), (32, 18474), (40, 18552), (43, 18579),

Gene: Optimus_24 Start: 16194, Stop: 16538, Start Num: 10

Candidate Starts for Optimus_24:

(Start: 10 @16194 has 246 MA's), (Start: 15 @16224 has 1 MA's), (30, 16401), (31, 16404),

Gene: OrionPax_16 Start: 9469, Stop: 9804, Start Num: 10

Candidate Starts for OrionPax_16:

(Start: 10 @9469 has 246 MA's), (17, 9550), (28, 9664), (34, 9715), (35, 9727), (41, 9778),

Gene: PaddyBaddy_16 Start: 9479, Stop: 9814, Start Num: 10

Candidate Starts for PaddyBaddy_16:

(Start: 10 @9479 has 246 MA's), (17, 9560), (28, 9674), (34, 9725), (35, 9737), (41, 9788),

Gene: PaintedDog_9 Start: 7076, Stop: 7468, Start Num: 9

Candidate Starts for PaintedDog_9:

(1, 6827), (5, 7004), (Start: 9 @7076 has 8 MA's), (Start: 15 @7112 has 1 MA's), (19, 7175), (20, 7181), (24, 7241), (30, 7286), (37, 7403), (39, 7427), (40, 7436), (42, 7445),

Gene: Palpatine_15 Start: 9762, Stop: 10097, Start Num: 10

Candidate Starts for Palpatine_15:

(Start: 10 @9762 has 246 MA's), (17, 9843), (20, 9864), (28, 9957), (35, 10020), (41, 10071),

Gene: Panchino_9 Start: 6455, Stop: 6799, Start Num: 10

Candidate Starts for Panchino_9:

(3, 6377), (Start: 10 @6455 has 246 MA's), (Start: 15 @6488 has 1 MA's), (20, 6557), (23, 6611), (25, 6626), (26, 6629), (29, 6659), (30, 6662), (38, 6746), (40, 6767),

Gene: Paperbeatsrock_17 Start: 10701, Stop: 11036, Start Num: 10

Candidate Starts for Paperbeatsrock_17:

(Start: 10 @10701 has 246 MA's), (17, 10782), (28, 10896), (34, 10947), (35, 10959), (41, 11010),

Gene: Parmesanjohn_9 Start: 6438, Stop: 6782, Start Num: 10

Candidate Starts for Parmesanjohn_9:

(3, 6360), (Start: 10 @6438 has 246 MA's), (Start: 15 @6471 has 1 MA's), (20, 6540), (23, 6594), (25, 6609), (26, 6612), (30, 6645), (38, 6729), (40, 6750),

Gene: Pat3_15 Start: 8969, Stop: 9304, Start Num: 10

Candidate Starts for Pat3_15:

(Start: 10 @8969 has 246 MA's), (17, 9050), (28, 9164), (34, 9215), (35, 9227), (41, 9278),

Gene: Petra64142_16 Start: 10182, Stop: 10517, Start Num: 10

Candidate Starts for Petra64142_16:

(Start: 10 @10182 has 246 MA's), (17, 10263), (28, 10377), (34, 10428), (35, 10440), (41, 10491),

Gene: Phaja_15 Start: 9917, Stop: 10252, Start Num: 10

Candidate Starts for Phaja_15:

(Start: 10 @9917 has 246 MA's), (17, 9998), (20, 10019), (28, 10112), (35, 10175), (41, 10226),

Gene: PhancyPhin_9 Start: 6479, Stop: 6823, Start Num: 10

Candidate Starts for PhancyPhin_9:

(3, 6401), (Start: 10 @6479 has 246 MA's), (Start: 15 @6512 has 1 MA's), (20, 6581), (23, 6635), (25, 6650), (26, 6653), (29, 6683), (30, 6686), (38, 6770), (40, 6791),

Gene: Pharsalus_16 Start: 10501, Stop: 10836, Start Num: 10

Candidate Starts for Pharsalus_16:

(Start: 10 @10501 has 246 MA's), (17, 10582), (28, 10696), (34, 10747), (35, 10759), (41, 10810),

Gene: PhatBacter_15 Start: 9767, Stop: 10102, Start Num: 10

Candidate Starts for PhatBacter_15:

(Start: 10 @9767 has 246 MA's), (17, 9848), (28, 9962), (34, 10013), (35, 10025), (41, 10076),

Gene: Phaux_14 Start: 9765, Stop: 10100, Start Num: 10

Candidate Starts for Phaux_14:

(Start: 10 @9765 has 246 MA's), (17, 9846), (20, 9867), (28, 9960), (35, 10023), (41, 10074),

Gene: Philonius_9 Start: 6438, Stop: 6782, Start Num: 10

Candidate Starts for Philonius_9:

(3, 6360), (Start: 10 @6438 has 246 MA's), (Start: 15 @6471 has 1 MA's), (20, 6540), (23, 6594), (25, 6609), (26, 6612), (30, 6645), (38, 6729), (40, 6750),

Gene: Phloss_9 Start: 6438, Stop: 6782, Start Num: 10

Candidate Starts for Phloss_9:

(3, 6360), (Start: 10 @6438 has 246 MA's), (Start: 15 @6471 has 1 MA's), (20, 6540), (23, 6594), (25, 6609), (26, 6612), (30, 6645), (38, 6729), (40, 6750),

Gene: Phoebus_26 Start: 16841, Stop: 17185, Start Num: 10

Candidate Starts for Phoebus_26:

(Start: 10 @16841 has 246 MA's), (Start: 15 @16871 has 1 MA's), (22, 16985), (30, 17048), (31, 17051),

Gene: Phrann_9 Start: 6479, Stop: 6823, Start Num: 10

Candidate Starts for Phrann_9:

(3, 6401), (Start: 10 @6479 has 246 MA's), (Start: 15 @6512 has 1 MA's), (20, 6581), (23, 6635), (25, 6650), (26, 6653), (29, 6683), (30, 6686), (38, 6770), (40, 6791),

Gene: Phrux_15 Start: 9465, Stop: 9800, Start Num: 10

Candidate Starts for Phrux_15:

(Start: 10 @9465 has 246 MA's), (17, 9546), (28, 9660), (34, 9711), (35, 9723), (41, 9774),

Gene: Pipsqueaks_9 Start: 6438, Stop: 6782, Start Num: 10

Candidate Starts for Pipsqueaks_9:

(3, 6360), (Start: 10 @6438 has 246 MA's), (Start: 15 @6471 has 1 MA's), (20, 6540), (23, 6594), (25, 6609), (26, 6612), (30, 6645), (38, 6729), (40, 6750),

Gene: Policronamos_15 Start: 9767, Stop: 10102, Start Num: 10

Candidate Starts for Policronamos_15:

(Start: 10 @9767 has 246 MA's), (17, 9848), (28, 9962), (34, 10013), (35, 10025), (41, 10076),

Gene: Porcelain_24 Start: 14314, Stop: 14658, Start Num: 10

Candidate Starts for Porcelain_24:

(Start: 10 @14314 has 246 MA's), (Start: 15 @14344 has 1 MA's), (19, 14410), (30, 14521), (31, 14524), (32, 14548), (40, 14626), (43, 14653),

Gene: Porky_14 Start: 9039, Stop: 9374, Start Num: 10

Candidate Starts for Porky_14:

(Start: 10 @9039 has 246 MA's), (17, 9120), (28, 9234), (34, 9285), (35, 9297), (41, 9348),

Gene: Pound_26 Start: 16933, Stop: 17277, Start Num: 10

Candidate Starts for Pound_26:

(Start: 10 @16933 has 246 MA's), (Start: 15 @16963 has 1 MA's), (22, 17077), (30, 17140), (31, 17143),

Gene: Ptowny_15 Start: 9106, Stop: 9441, Start Num: 10

Candidate Starts for Ptowny_15:

(Start: 10 @9106 has 246 MA's), (17, 9187), (28, 9301), (34, 9352), (35, 9364), (41, 9415),

Gene: Pumpkin_16 Start: 9282, Stop: 9617, Start Num: 10

Candidate Starts for Pumpkin_16:

(Start: 10 @9282 has 246 MA's), (17, 9363), (28, 9477), (34, 9528), (35, 9540), (41, 9591),

Gene: Purgamenstris_9 Start: 6479, Stop: 6823, Start Num: 10

Candidate Starts for Purgamenstris_9:

(3, 6401), (Start: 10 @6479 has 246 MA's), (Start: 15 @6512 has 1 MA's), (20, 6581), (23, 6635), (25, 6650), (26, 6653), (29, 6683), (30, 6686), (38, 6770), (40, 6791),

Gene: Quallification_17 Start: 10464, Stop: 10799, Start Num: 10

Candidate Starts for Quallification_17:

(Start: 10 @10464 has 246 MA's), (17, 10545), (20, 10566), (28, 10659), (35, 10722), (41, 10773),

Gene: QueenHazel_10 Start: 7532, Stop: 7927, Start Num: 9

Candidate Starts for QueenHazel_10:

(1, 7283), (5, 7460), (Start: 9 @7532 has 8 MA's), (Start: 15 @7568 has 1 MA's), (19, 7631), (20, 7637), (24, 7697), (30, 7742), (37, 7859), (39, 7886), (40, 7895), (42, 7904),

Gene: Rakim_17 Start: 10371, Stop: 10706, Start Num: 10

Candidate Starts for Rakim_17:

(Start: 10 @10371 has 246 MA's), (17, 10452), (20, 10473), (28, 10566), (35, 10629), (41, 10680),

Gene: Raymond7_9 Start: 6479, Stop: 6823, Start Num: 10

Candidate Starts for Raymond7_9:

(3, 6401), (Start: 10 @6479 has 246 MA's), (Start: 15 @6512 has 1 MA's), (20, 6581), (23, 6635), (25, 6650), (26, 6653), (29, 6683), (30, 6686), (38, 6770), (40, 6791),

Gene: Rearden_21 Start: 13299, Stop: 13643, Start Num: 10

Candidate Starts for Rearden_21:

(Start: 10 @13299 has 246 MA's), (Start: 15 @13329 has 1 MA's), (19, 13395), (30, 13506), (31, 13509), (32, 13533), (40, 13611), (43, 13638),

Gene: Rebel_9 Start: 6479, Stop: 6823, Start Num: 10

Candidate Starts for Rebel_9:

(3, 6401), (Start: 10 @6479 has 246 MA's), (Start: 15 @6512 has 1 MA's), (20, 6581), (23, 6635), (25, 6650), (26, 6653), (29, 6683), (30, 6686), (38, 6770), (40, 6791),

Gene: Redi_9 Start: 6479, Stop: 6823, Start Num: 10

Candidate Starts for Redi_9:

(3, 6401), (Start: 10 @6479 has 246 MA's), (Start: 15 @6512 has 1 MA's), (20, 6581), (23, 6635), (25, 6650), (26, 6653), (29, 6683), (30, 6686), (38, 6770), (40, 6791),

Gene: Redno2_25 Start: 16325, Stop: 16669, Start Num: 10

Candidate Starts for Redno2_25:

(Start: 10 @16325 has 246 MA's), (Start: 15 @16355 has 1 MA's), (22, 16469), (30, 16532), (31, 16535),

Gene: Rimmer_15 Start: 9824, Stop: 10159, Start Num: 10

Candidate Starts for Rimmer_15:

(Start: 10 @9824 has 246 MA's), (17, 9905), (20, 9926), (28, 10019), (35, 10082), (41, 10133),

Gene: RiverMonster_15 Start: 9479, Stop: 9814, Start Num: 10

Candidate Starts for RiverMonster_15:

(Start: 10 @9479 has 246 MA's), (17, 9560), (28, 9674), (34, 9725), (35, 9737), (41, 9788),

Gene: Rubeelu_9 Start: 6458, Stop: 6799, Start Num: 10

Candidate Starts for Rubeelu_9:

(Start: 10 @6458 has 246 MA's), (Start: 15 @6488 has 1 MA's), (23, 6611), (30, 6662), (38, 6746), (40, 6767),

Gene: Ryadel_47 Start: 23398, Stop: 23757, Start Num: 10

Candidate Starts for Ryadel_47:

(Start: 10 @23398 has 246 MA's), (Start: 15 @23428 has 1 MA's), (18, 23479), (19, 23491), (24, 23557), (34, 23665), (36, 23689),

Gene: Saints25_16 Start: 9388, Stop: 9723, Start Num: 10

Candidate Starts for Saints25_16:

(Start: 10 @9388 has 246 MA's), (17, 9469), (28, 9583), (34, 9634), (35, 9646), (41, 9697),

Gene: Sassay_15 Start: 9765, Stop: 10100, Start Num: 10

Candidate Starts for Sassay_15:

(Start: 10 @9765 has 246 MA's), (17, 9846), (20, 9867), (28, 9960), (35, 10023), (41, 10074),

Gene: Sbash_9 Start: 7109, Stop: 7504, Start Num: 9

Candidate Starts for Sbash_9:

(5, 7034), (Start: 9 @7109 has 8 MA's), (12, 7133), (Start: 15 @7145 has 1 MA's), (39, 7463), (40, 7472), (42, 7481),

Gene: Schatzie_24 Start: 15866, Stop: 16210, Start Num: 10

Candidate Starts for Schatzie_24:

(4, 15800), (Start: 10 @15866 has 246 MA's), (Start: 15 @15896 has 1 MA's), (22, 16010), (30, 16073), (31, 16076),

Gene: Schnauzer_9 Start: 6438, Stop: 6782, Start Num: 10

Candidate Starts for Schnauzer_9:

(3, 6360), (Start: 10 @6438 has 246 MA's), (Start: 15 @6471 has 1 MA's), (20, 6540), (23, 6594), (25, 6609), (26, 6612), (30, 6645), (38, 6729), (40, 6750),

Gene: SchoolBus_43 Start: 22339, Stop: 22698, Start Num: 10

Candidate Starts for SchoolBus_43:

(Start: 10 @22339 has 246 MA's), (Start: 15 @22369 has 1 MA's), (18, 22420), (19, 22432), (24, 22498), (34, 22606), (36, 22630),

Gene: Schuy_44 Start: 22272, Stop: 22631, Start Num: 10

Candidate Starts for Schuy_44:

(Start: 10 @22272 has 246 MA's), (Start: 15 @22302 has 1 MA's), (18, 22353), (19, 22365), (24, 22431), (34, 22539), (36, 22563),

Gene: Scitech_9 Start: 6438, Stop: 6782, Start Num: 10

Candidate Starts for Scitech_9:

(3, 6360), (Start: 10 @6438 has 246 MA's), (Start: 15 @6471 has 1 MA's), (20, 6540), (23, 6594), (25, 6609), (26, 6612), (30, 6645), (38, 6729), (40, 6750),

Gene: Shaboozey_18 Start: 12725, Stop: 13069, Start Num: 10

Candidate Starts for Shaboozey_18:

(Start: 10 @12725 has 246 MA's), (Start: 15 @12755 has 1 MA's), (19, 12821), (30, 12932), (31, 12935), (32, 12959), (40, 13037), (43, 13064),

Gene: ShamWow_16 Start: 10258, Stop: 10593, Start Num: 10

Candidate Starts for ShamWow_16:

(Start: 10 @10258 has 246 MA's), (17, 10339), (20, 10360), (28, 10453), (35, 10516), (41, 10567),

Gene: ShereKhan_17 Start: 10707, Stop: 11042, Start Num: 10

Candidate Starts for ShereKhan_17:

(Start: 10 @10707 has 246 MA's), (17, 10788), (28, 10902), (34, 10953), (35, 10965), (41, 11016),

Gene: Shida_43 Start: 22179, Stop: 22538, Start Num: 10

Candidate Starts for Shida_43:

(Start: 10 @22179 has 246 MA's), (Start: 15 @22209 has 1 MA's), (18, 22260), (19, 22272), (24, 22338), (34, 22446), (36, 22470),

Gene: ShrimpFriedEgg_9 Start: 6479, Stop: 6823, Start Num: 10

Candidate Starts for ShrimpFriedEgg_9:

(3, 6401), (Start: 10 @6479 has 246 MA's), (Start: 15 @6512 has 1 MA's), (20, 6581), (23, 6635), (25, 6650), (26, 6653), (29, 6683), (30, 6686), (38, 6770), (40, 6791),

Gene: Shweta_9 Start: 6479, Stop: 6823, Start Num: 10

Candidate Starts for Shweta_9:

(3, 6401), (Start: 10 @6479 has 246 MA's), (Start: 15 @6512 has 1 MA's), (20, 6581), (23, 6635), (25, 6650), (26, 6653), (29, 6683), (30, 6686), (38, 6770), (40, 6791),

Gene: Silvafighter_9 Start: 6438, Stop: 6782, Start Num: 10

Candidate Starts for Silvafighter_9:

(3, 6360), (Start: 10 @6438 has 246 MA's), (Start: 15 @6471 has 1 MA's), (20, 6540), (23, 6594), (25, 6609), (26, 6612), (30, 6645), (38, 6729), (40, 6750),

Gene: Silvy_9 Start: 6438, Stop: 6782, Start Num: 10

Candidate Starts for Silvy_9:

(3, 6360), (Start: 10 @6438 has 246 MA's), (Start: 15 @6471 has 1 MA's), (20, 6540), (23, 6594), (25, 6609), (26, 6612), (30, 6645), (38, 6729), (40, 6750),

Gene: Simpliphy_16 Start: 9469, Stop: 9804, Start Num: 10

Candidate Starts for Simpliphy_16:

(Start: 10 @9469 has 246 MA's), (17, 9550), (28, 9664), (34, 9715), (35, 9727), (41, 9778),

Gene: SirDuracell_15 Start: 8924, Stop: 9259, Start Num: 10
Candidate Starts for SirDuracell_15:
(Start: 10 @8924 has 246 MA's), (17, 9005), (20, 9026), (28, 9119), (35, 9182), (41, 9233),

Gene: SkinnyPete_9 Start: 6479, Stop: 6823, Start Num: 10
Candidate Starts for SkinnyPete_9:
(3, 6401), (Start: 10 @6479 has 246 MA's), (Start: 15 @6512 has 1 MA's), (20, 6581), (23, 6635), (25, 6650), (26, 6653), (29, 6683), (30, 6686), (38, 6770), (40, 6791),

Gene: Smooch_45 Start: 23467, Stop: 23826, Start Num: 10
Candidate Starts for Smooch_45:
(Start: 10 @23467 has 246 MA's), (Start: 15 @23497 has 1 MA's), (18, 23548), (19, 23560), (24, 23626), (34, 23734), (36, 23758),

Gene: Smurph_9 Start: 6438, Stop: 6782, Start Num: 10
Candidate Starts for Smurph_9:
(3, 6360), (Start: 10 @6438 has 246 MA's), (Start: 15 @6471 has 1 MA's), (20, 6540), (23, 6594), (25, 6609), (26, 6612), (30, 6645), (38, 6729), (40, 6750),

Gene: Snekmaggedon_9 Start: 6479, Stop: 6823, Start Num: 10
Candidate Starts for Snekmaggedon_9:
(3, 6401), (Start: 10 @6479 has 246 MA's), (Start: 15 @6512 has 1 MA's), (20, 6581), (23, 6635), (25, 6650), (26, 6653), (29, 6683), (30, 6686), (38, 6770), (40, 6791),

Gene: SophKB_16 Start: 10257, Stop: 10592, Start Num: 10
Candidate Starts for SophKB_16:
(Start: 10 @10257 has 246 MA's), (17, 10338), (20, 10359), (28, 10452), (35, 10515), (41, 10566),

Gene: Sotrice96_16 Start: 10213, Stop: 10548, Start Num: 10
Candidate Starts for Sotrice96_16:
(Start: 10 @10213 has 246 MA's), (17, 10294), (20, 10315), (28, 10408), (35, 10471), (41, 10522),

Gene: Spinach_9 Start: 6479, Stop: 6823, Start Num: 10
Candidate Starts for Spinach_9:
(3, 6401), (Start: 10 @6479 has 246 MA's), (Start: 15 @6512 has 1 MA's), (20, 6581), (23, 6635), (25, 6650), (26, 6653), (29, 6683), (30, 6686), (38, 6770), (40, 6791),

Gene: SpongeBob_9 Start: 6479, Stop: 6823, Start Num: 10
Candidate Starts for SpongeBob_9:
(3, 6401), (Start: 10 @6479 has 246 MA's), (Start: 15 @6512 has 1 MA's), (20, 6581), (23, 6635), (25, 6650), (26, 6653), (29, 6683), (30, 6686), (38, 6770), (40, 6791),

Gene: Squint_23 Start: 14441, Stop: 14785, Start Num: 10
Candidate Starts for Squint_23:
(Start: 10 @14441 has 246 MA's), (Start: 15 @14471 has 1 MA's), (19, 14537), (30, 14648), (31, 14651), (32, 14675), (40, 14753), (43, 14780),

Gene: Stank_17 Start: 9714, Stop: 10049, Start Num: 10
Candidate Starts for Stank_17:
(Start: 10 @9714 has 246 MA's), (17, 9795), (28, 9909), (34, 9960), (35, 9972), (41, 10023),

Gene: Stark_16 Start: 9482, Stop: 9817, Start Num: 10
Candidate Starts for Stark_16:

(Start: 10 @9482 has 246 MA's), (17, 9563), (28, 9677), (34, 9728), (35, 9740), (41, 9791),

Gene: StellaBean_16 Start: 10257, Stop: 10592, Start Num: 10

Candidate Starts for StellaBean_16:

(Start: 10 @10257 has 246 MA's), (17, 10338), (20, 10359), (28, 10452), (35, 10515), (41, 10566),

Gene: StolenFromERC_17 Start: 9714, Stop: 10049, Start Num: 10

Candidate Starts for StolenFromERC_17:

(Start: 10 @9714 has 246 MA's), (17, 9795), (28, 9909), (34, 9960), (35, 9972), (41, 10023),

Gene: StormChicken_16 Start: 10432, Stop: 10767, Start Num: 10

Candidate Starts for StormChicken_16:

(Start: 10 @10432 has 246 MA's), (17, 10513), (28, 10627), (34, 10678), (35, 10690), (41, 10741),

Gene: Stuck_9 Start: 7121, Stop: 7516, Start Num: 9

Candidate Starts for Stuck_9:

(5, 7046), (Start: 9 @7121 has 8 MA's), (13, 7148), (14, 7154), (Start: 15 @7157 has 1 MA's), (18, 7208), (21, 7235), (24, 7286), (30, 7331), (32, 7358), (37, 7448), (39, 7475), (40, 7484), (42, 7493),

Gene: Superphikiman_24 Start: 14495, Stop: 14839, Start Num: 10

Candidate Starts for Superphikiman_24:

(Start: 10 @14495 has 246 MA's), (Start: 15 @14525 has 1 MA's), (19, 14591), (30, 14702), (31, 14705), (32, 14729), (40, 14807), (43, 14834),

Gene: TBrady12_17 Start: 9711, Stop: 10046, Start Num: 10

Candidate Starts for TBrady12_17:

(Start: 10 @9711 has 246 MA's), (17, 9792), (28, 9906), (34, 9957), (35, 9969), (41, 10020),

Gene: Tapioca_9 Start: 6438, Stop: 6782, Start Num: 10

Candidate Starts for Tapioca_9:

(3, 6360), (Start: 10 @6438 has 246 MA's), (Start: 15 @6471 has 1 MA's), (20, 6540), (23, 6594), (25, 6609), (26, 6612), (30, 6645), (38, 6729), (40, 6750),

Gene: Tarkin_17 Start: 10710, Stop: 11045, Start Num: 10

Candidate Starts for Tarkin_17:

(Start: 10 @10710 has 246 MA's), (17, 10791), (28, 10905), (34, 10956), (35, 10968), (41, 11019),

Gene: TeamEdward_16 Start: 10429, Stop: 10764, Start Num: 10

Candidate Starts for TeamEdward_16:

(Start: 10 @10429 has 246 MA's), (17, 10510), (28, 10624), (34, 10675), (35, 10687), (41, 10738),

Gene: TeardropMSU_15 Start: 10165, Stop: 10500, Start Num: 10

Candidate Starts for TeardropMSU_15:

(Start: 10 @10165 has 246 MA's), (17, 10246), (20, 10267), (28, 10360), (35, 10423), (41, 10474),

Gene: Teaspoon_15 Start: 9164, Stop: 9499, Start Num: 10

Candidate Starts for Teaspoon_15:

(Start: 10 @9164 has 246 MA's), (17, 9245), (28, 9359), (34, 9410), (35, 9422), (41, 9473),

Gene: TelAviv_40 Start: 22333, Stop: 22692, Start Num: 10

Candidate Starts for TelAviv_40:

(Start: 10 @22333 has 246 MA's), (Start: 15 @22363 has 1 MA's), (18, 22414), (19, 22426), (24, 22492), (34, 22600), (36, 22624),

Gene: Terminus_15 Start: 9811, Stop: 10146, Start Num: 10

Candidate Starts for Terminus_15:

(Start: 10 @9811 has 246 MA's), (17, 9892), (28, 10006), (34, 10057), (35, 10069), (41, 10120),

Gene: Tessdabest_8 Start: 6438, Stop: 6782, Start Num: 10

Candidate Starts for Tessdabest_8:

(3, 6360), (Start: 10 @6438 has 246 MA's), (Start: 15 @6471 has 1 MA's), (20, 6540), (23, 6594), (25, 6609), (26, 6612), (30, 6645), (38, 6729), (40, 6750),

Gene: Thibault_22 Start: 16125, Stop: 16469, Start Num: 10

Candidate Starts for Thibault_22:

(Start: 10 @16125 has 246 MA's), (Start: 15 @16155 has 1 MA's), (30, 16332), (31, 16335),

Gene: Thimble_16 Start: 9214, Stop: 9549, Start Num: 10

Candidate Starts for Thimble_16:

(Start: 10 @9214 has 246 MA's), (17, 9295), (20, 9316), (28, 9409), (35, 9472), (41, 9523),

Gene: ThreeRngTarjay_25 Start: 16691, Stop: 17035, Start Num: 10

Candidate Starts for ThreeRngTarjay_25:

(Start: 10 @16691 has 246 MA's), (Start: 15 @16721 has 1 MA's), (22, 16835), (30, 16898), (31, 16901),

Gene: Thresher_16 Start: 10472, Stop: 10807, Start Num: 10

Candidate Starts for Thresher_16:

(Start: 10 @10472 has 246 MA's), (17, 10553), (28, 10667), (34, 10718), (35, 10730), (41, 10781),

Gene: Tomaszewski_15 Start: 9858, Stop: 10193, Start Num: 10

Candidate Starts for Tomaszewski_15:

(Start: 10 @9858 has 246 MA's), (17, 9939), (20, 9960), (28, 10053), (35, 10116), (41, 10167),

Gene: Tortoise12_9 Start: 6438, Stop: 6782, Start Num: 10

Candidate Starts for Tortoise12_9:

(3, 6360), (Start: 10 @6438 has 246 MA's), (Start: 15 @6471 has 1 MA's), (20, 6540), (23, 6594), (25, 6609), (26, 6612), (30, 6645), (38, 6729), (40, 6750),

Gene: Toto_16 Start: 10258, Stop: 10593, Start Num: 10

Candidate Starts for Toto_16:

(Start: 10 @10258 has 246 MA's), (17, 10339), (20, 10360), (28, 10453), (35, 10516), (41, 10567),

Gene: Traaww1_14 Start: 9903, Stop: 10238, Start Num: 10

Candidate Starts for Traaww1_14:

(Start: 10 @9903 has 246 MA's), (17, 9984), (20, 10005), (28, 10098), (35, 10161), (41, 10212),

Gene: Tuco_16 Start: 10257, Stop: 10592, Start Num: 10

Candidate Starts for Tuco_16:

(Start: 10 @10257 has 246 MA's), (17, 10338), (20, 10359), (28, 10452), (35, 10515), (41, 10566),

Gene: Ukulele_15 Start: 9482, Stop: 9817, Start Num: 10

Candidate Starts for Ukulele_15:

(Start: 10 @9482 has 246 MA's), (17, 9563), (28, 9677), (34, 9728), (35, 9740), (41, 9791),

Gene: Vagabond_43 Start: 22166, Stop: 22525, Start Num: 10

Candidate Starts for Vagabond_43:

(Start: 10 @22166 has 246 MA's), (Start: 15 @22196 has 1 MA's), (18, 22247), (19, 22259), (24, 22325), (34, 22433), (36, 22457),

Gene: Vorrps_42 Start: 21925, Stop: 22284, Start Num: 10

Candidate Starts for Vorrps_42:

(Start: 10 @21925 has 246 MA's), (Start: 15 @21955 has 1 MA's), (18, 22006), (19, 22018), (24, 22084), (34, 22192), (36, 22216),

Gene: Wanda_27 Start: 16134, Stop: 16478, Start Num: 10

Candidate Starts for Wanda_27:

(Start: 10 @16134 has 246 MA's), (Start: 15 @16164 has 1 MA's), (22, 16278), (30, 16341), (31, 16344),

Gene: Wiggin_17 Start: 9714, Stop: 10049, Start Num: 10

Candidate Starts for Wiggin_17:

(Start: 10 @9714 has 246 MA's), (17, 9795), (28, 9909), (34, 9960), (35, 9972), (41, 10023),

Gene: Wildflower_43 Start: 21911, Stop: 22270, Start Num: 10

Candidate Starts for Wildflower_43:

(Start: 10 @21911 has 246 MA's), (Start: 15 @21941 has 1 MA's), (18, 21992), (19, 22004), (24, 22070), (34, 22178), (36, 22202),

Gene: Willez_15 Start: 9765, Stop: 10100, Start Num: 10

Candidate Starts for Willez_15:

(Start: 10 @9765 has 246 MA's), (17, 9846), (20, 9867), (28, 9960), (35, 10023), (41, 10074),

Gene: Winget_44 Start: 22605, Stop: 22964, Start Num: 10

Candidate Starts for Winget_44:

(Start: 10 @22605 has 246 MA's), (Start: 15 @22635 has 1 MA's), (18, 22686), (19, 22698), (24, 22764), (34, 22872), (36, 22896),

Gene: Wogge42_42 Start: 22244, Stop: 22603, Start Num: 10

Candidate Starts for Wogge42_42:

(Start: 10 @22244 has 246 MA's), (Start: 15 @22274 has 1 MA's), (18, 22325), (19, 22337), (24, 22403), (34, 22511), (36, 22535),

Gene: Xandras_17 Start: 9714, Stop: 10049, Start Num: 10

Candidate Starts for Xandras_17:

(Start: 10 @9714 has 246 MA's), (17, 9795), (28, 9909), (34, 9960), (35, 9972), (41, 10023),

Gene: Xeno_9 Start: 6438, Stop: 6782, Start Num: 10

Candidate Starts for Xeno_9:

(3, 6360), (Start: 10 @6438 has 246 MA's), (Start: 15 @6471 has 1 MA's), (20, 6540), (23, 6594), (25, 6609), (26, 6612), (30, 6645), (38, 6729), (40, 6750),

Gene: Xerxes_9 Start: 6438, Stop: 6782, Start Num: 10

Candidate Starts for Xerxes_9:

(3, 6360), (Start: 10 @6438 has 246 MA's), (Start: 15 @6471 has 1 MA's), (20, 6540), (23, 6594), (25, 6609), (26, 6612), (30, 6645), (38, 6729), (40, 6750),

Gene: Xiaokay_23 Start: 16141, Stop: 16485, Start Num: 10

Candidate Starts for Xiaokay_23:

(Start: 10 @16141 has 246 MA's), (Start: 15 @16171 has 1 MA's), (22, 16285), (30, 16348), (31, 16351),

Gene: Xula_9 Start: 7161, Stop: 7556, Start Num: 9

Candidate Starts for Xula_9:

(1, 6912), (5, 7089), (Start: 9 @7161 has 8 MA's), (Start: 15 @7197 has 1 MA's), (19, 7260), (20, 7266), (24, 7326), (30, 7371), (37, 7488), (39, 7515), (40, 7524), (42, 7533),

Gene: YassJohnny_16 Start: 10257, Stop: 10592, Start Num: 10

Candidate Starts for YassJohnny_16:

(Start: 10 @10257 has 246 MA's), (17, 10338), (20, 10359), (28, 10452), (35, 10515), (41, 10566),

Gene: Yeet_24 Start: 15867, Stop: 16211, Start Num: 10

Candidate Starts for Yeet_24:

(Start: 10 @15867 has 246 MA's), (Start: 15 @15897 has 1 MA's), (22, 16011), (30, 16074), (31, 16077),

Gene: Youngblood_15 Start: 9892, Stop: 10227, Start Num: 10

Candidate Starts for Youngblood_15:

(Start: 10 @9892 has 246 MA's), (17, 9973), (28, 10087), (34, 10138), (35, 10150), (41, 10201),

Gene: YoyoKar_41 Start: 21889, Stop: 22248, Start Num: 10

Candidate Starts for YoyoKar_41:

(Start: 10 @21889 has 246 MA's), (Start: 15 @21919 has 1 MA's), (18, 21970), (19, 21982), (24, 22048), (34, 22156), (36, 22180),

Gene: YungJamal_46 Start: 22644, Stop: 23003, Start Num: 10

Candidate Starts for YungJamal_46:

(Start: 10 @22644 has 246 MA's), (Start: 15 @22674 has 1 MA's), (18, 22725), (19, 22737), (24, 22803), (34, 22911), (36, 22935),

Gene: Zakhe101_43 Start: 22055, Stop: 22414, Start Num: 10

Candidate Starts for Zakhe101_43:

(Start: 10 @22055 has 246 MA's), (Start: 15 @22085 has 1 MA's), (18, 22136), (19, 22148), (24, 22214), (34, 22322), (36, 22346),

Gene: Zebo_43 Start: 22339, Stop: 22698, Start Num: 10

Candidate Starts for Zebo_43:

(Start: 10 @22339 has 246 MA's), (Start: 15 @22369 has 1 MA's), (18, 22420), (19, 22432), (24, 22498), (34, 22606), (36, 22630),

Gene: Zelink_27 Start: 16719, Stop: 17063, Start Num: 10

Candidate Starts for Zelink_27:

(Start: 10 @16719 has 246 MA's), (Start: 15 @16749 has 1 MA's), (22, 16863), (30, 16926), (31, 16929),

Gene: xkcd_16 Start: 9917, Stop: 10252, Start Num: 10

Candidate Starts for xkcd_16:

(Start: 10 @9917 has 246 MA's), (17, 9998), (20, 10019), (28, 10112), (35, 10175), (41, 10226),