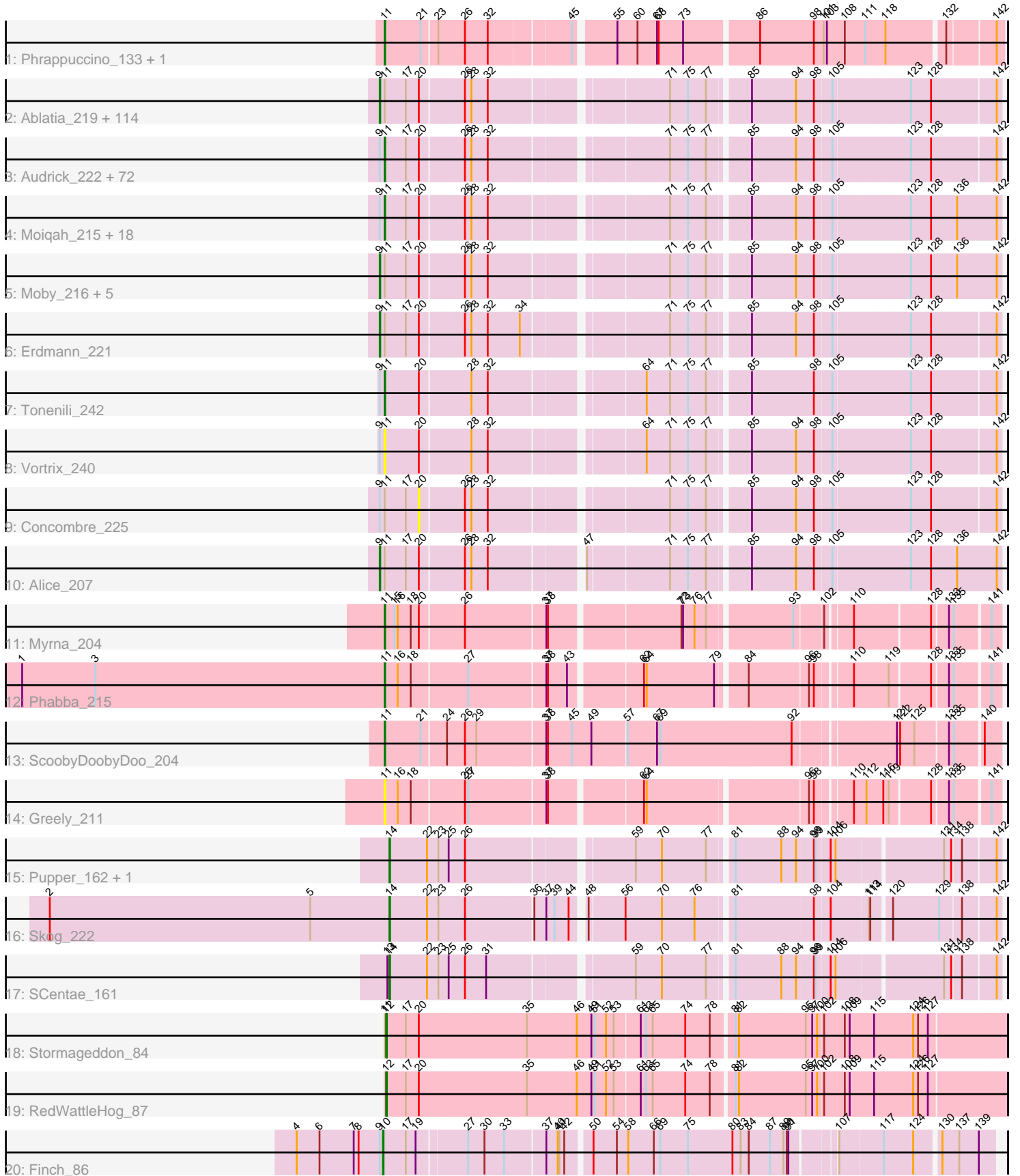


Pham 303082



Note: Tracks are now grouped by subcluster and scaled. Switching in subcluster is indicated by changes in track color. Track scale is now set by default to display the region 30 bp upstream of start 1 to 30 bp downstream of the last possible start. If this default region is judged to be packed too tightly with annotated starts, the track will be further scaled to only show that region of the ORF with annotated starts. This action will be indicated by adding "Zoomed" to the title. For starts, yellow indicates the location of called starts comprised solely of Glimmer/GeneMark auto-annotations, green indicates the location of called starts with at least 1 manual gene annotation.

Pham 303082 Report

This analysis was run 06/08/26 on database version 649.

Pham number 303082 has 231 members, 39 are drafts.

Phages represented in each track:

- Track 1 : Phrappuccino_133, Settecandela_133
- Track 2 : Ablatia_219, Gabriel_223, LRRHood_213, Drazdys_218, SrishMeg2525_217, Loanshark_217, Ghost_220, Nidhogg_221, Nappy_221, JPickles_216, Bipolarisk_218, Iota_215, ValleyTerrace_221, BananaFence_217, Catera_212, Jezreel_217, ChaylaJr_218, ErnieJ_213, Delylah_222, Spud_214, BadAgartude_214, CindyLou_221, Ewok_219, Pivoine_221, GlutenPhree_221, Gamgam_221, Patter_221, Kboogie_224, Roots515_222, Blackdragon_215, QBert_212, Megamind_217, DirtMonster_213, Mangeria_221, Yassified_217, Gizmo_226, Burrough_222, Melpomini_215, Delilah_218, EasyJones_223, Phlegm_224, Pinkcreek_204, Capablanca_225, ZygoTaiga_217, LolaVinca_218, Latch_220, McGee_219, Maby2021_220, Amataga_221, Rizal_212, Jedediah_220, ChickenPhender_216, Shnickers_218, Cane17_211, Cali_213, RoMag_215, Pier_221, StephanieG_216, YemiJoy2021_221, TinyTim_218, Ronan_216, Phusco_218, SmallFry_220, Atlantean_220, Specks_224, Basquiat_217, Bread_215, Shrimp_222, Ngannou_217, Rahel_221, Zeenon_222, Trinitium_216, MikeLiesIn_222, Sauce_216, Naija_221, Blubba_209, JulietS_211, Asterius_222, FrayBell_223, Blackbrain_217, Bxz1_210, Teardrop_217, Duckfeet_214, Lethe_220, Tortoise16_218, Jemmno_219, Substance289_217, Janiyra_223, Turret_213, LordLeafolot_221, SoilZilla_215, LifeSavor_219, PurduePete_220, Ading_221, Wally_218, Zalkecks_219, Tyke_218, Pio_228, Adlitam_219, Norm_220, StubbySaigey_225, Yucca_220, BobaPhatt_212, InigoMontoya_223, Domi_214, NedWong_219, Darko_219, Matsumoto_218, LinStu_219, Daffodil_225, Shelob_221, FudgeTart_215, ShiaLabeouf_217, NoodleTree_226, Littleton_223
- Track 3 : Audrick_222, Essence_217, I3_230, SVoro_216, Naval22_225, DTDevon_222, SilverDipper_224, Colt_211, CharlieB_214, Grasshills_228, Koguma_219, OrediggerDelux_216, ScottMcG_214, Dietrick_209, Rocha_217, BeanWater_212, Halldule_213, Breeniome_219, Bigswole_225, Issimir_213, PharkleMinkus_222, Quasimodo_222, Spec_215, Izajani_218, Momo_221, Fixie_220, Grungle_204, Lukilu_211, ArcherS7_220, Willis_221, Derek_217, Astraea_214, Fludd_220, Jaygup_216, ET08_208, Dandelion_228, Napoleon13_217, YoungMoneyMata_219, DrPhinkDaddy_217, Pleione_224, Chargie21_217, Demodog_226, Chomp_220, Bowman_218, ParkTD_219, Bangla1971_220, Phox_221, Primadonna_215, Ava3_219, Morizzled23_217, Salacia_220, EmmaElysia_224, EggyFarm_229, Lee7_220, Belieber_213, Babyland_223, Mikro_216, NuevoMundo_223, Guwapp_215, Dessert_218, IkeLoa_212, Labradorite_218, Kamryn_219, JigglyPuff_227, Fongie_221, Bezza_209, InterFolia_223, Cactojaque_215, Tainan_221, FoxtrotP1_218, LookingGlass_219,

Pupusa_224, BigCity_229

- Track 4 : Moiqah_215, Sprinklers_218, Khaleesi_219, Caravan_211, Stubby_204, Jessibeth14_220, Cleatunium_213, Sebata_221, BackyardAgain_216, JustHall_214, Shaqnato_211, Lunareta_218, Bonray_222, Flabslab_215, MoMoMixon_218, HyRo_208, Montpel_218, McWolfish_217, EmToTheThree_220
- Track 5 : Moby_216, Maturis_217, JayJay_222, Rabinovish_213, Shifa_197, DeejaClivia_208
- Track 6 : Erdmann_221
- Track 7 : Tonenili_242
- Track 8 : Vortrix_240
- Track 9 : Concombres_225
- Track 10 : Alice_207
- Track 11 : Myrna_204
- Track 12 : Phabba_215
- Track 13 : ScoobyDoobyDoo_204
- Track 14 : Greely_211
- Track 15 : Pupper_162, CherryTomatoes_163
- Track 16 : Skog_222
- Track 17 : SCentae_161
- Track 18 : Stormageddon_84
- Track 19 : RedWattleHog_87
- Track 20 : Finch_86

Summary of Final Annotations (See graph section above for start numbers):

The start number called the most often in the published annotations is 9, it was called in 114 of the 192 non-draft genes in the pham.

Genes that call this "Most Annotated" start:

- Ablatia_219, Ading_221, Adlitam_219, Alice_207, Amataga_221, Asterius_222, Atlantean_220, BadAgartude_214, BananaFence_217, Basquiat_217, Bipolarisk_218, Blackbrain_217, Blackdragon_215, Blubba_209, BobaPhatt_212, Bread_215, Burrough_222, Bxz1_210, Cali_213, Cane17_211, Capablanca_225, Catera_212, ChaylaJr_218, ChickenPhender_216, CindyLou_221, Daffodil_225, Darko_219, DeejaClivia_208, Delilah_218, Delylah_222, DirtMonster_213, Domi_214, Drazdys_218, Duckfeet_214, EasyJones_223, Erdmann_221, ErnieJ_213, Ewok_219, FrayBell_223, FudgeTart_215, Gabriel_223, Gamgam_221, Ghost_220, Gizmo_226, GlutenPhree_221, InigoMontoya_223, Iota_215, JPickles_216, Janiyra_223, JayJay_222, Jedediah_220, Jemmno_219, Jezreel_217, JulietS_211, Kboogie_224, LRRHood_213, Latch_220, Lethe_220, LifeSavor_219, LinStu_219, Littleton_223, Loanshark_217, LolaVinca_218, LordLeafolot_221, Maby2021_220, Mangeria_221, Matsumoto_218, Maturis_217, McGee_219, Megamind_217, Melpomini_215, MikeLiesIn_222, Moby_216, Naija_221, Nappy_221, NedWong_219, Ngannou_217, Nidhogg_221, NoodleTree_226, Norm_220, Patter_221, Phlegm_224, Phusco_218, Pier_221, Pinkcreek_204, Pio_228, Pivoine_221, PurduePete_220, QBert_212, Rabinovish_213, Rahel_221, Rizal_212, RoMag_215, Ronan_216, Roots515_222, Sauce_216, Shelob_221, ShiaLabeouf_217, Shifa_197, Shnickers_218, Shrimp_222, SmallFry_220, SoilZilla_215, Specks_224, Spud_214, SrishMeg2525_217, StephanieG_216, StubbySaigey_225, Substance289_217, Teardrop_217, TinyTim_218, Tortoise16_218, Trinitium_216, Turret_213, Tyke_218,

ValleyTerrace_221, Wally_218, Yassified_217, YemiJoy2021_221, Yucca_220, Zalkecks_219, Zeenon_222, ZygoTaiga_217,

Genes that have the "Most Annotated" start but do not call it:

- ArcherS7_220, Astraea_214, Audrick_222, Ava3_219, Babyland_223, BackyardAgain_216, Bangla1971_220, BeanWater_212, Belieber_213, Bezza_209, BigCity_229, Bigswole_225, Bonray_222, Bowman_218, Breeniome_219, Cactojaque_215, Caravan_211, Chargie21_217, CharlieB_214, Chomp_220, Cleatunium_213, Colt_211, Concombre_225, DTDevon_222, Dandelion_228, Demodog_226, Derek_217, Dessert_218, Dietrick_209, DrPhinkDaddy_217, ET08_208, EggyFarm_229, EmToTheThree_220, EmmaElysia_224, Essence_217, Finch_86, Fixie_220, Flabslab_215, Fludd_220, Fongie_221, FoxtrotP1_218, Grasshills_228, Grungle_204, Guwapp_215, Halldule_213, HyRo_208, I3_230, IkeLoa_212, InterFolia_223, Issimir_213, Izajani_218, Jaygup_216, Jessibeth14_220, JigglyPuff_227, JustHall_214, Kamryn_219, Khaleesi_219, Koguma_219, Labradorite_218, Lee7_220, LookingGlass_219, Lukilu_211, Lunareta_218, McWolfish_217, Mikro_216, MoMoMixon_218, Moiqah_215, Momo_221, Montpel_218, Morizzled23_217, Napoleon13_217, Naval22_225, NuevoMundo_223, OrediggerDelux_216, ParkTD_219, PharkleMinkus_222, Phox_221, Pleione_224, Primadonna_215, Pupusa_224, Quasimodo_222, Rocha_217, SVoro_216, Salacia_220, ScottMcG_214, Sebata_221, Shaqnato_211, SilverDipper_224, Spec_215, Sprinklers_218, Stubby_204, Tainan_221, Tonenili_242, Vortex_240, Willis_221, YoungMoneyMata_219,

Genes that do not have the "Most Annotated" start:

- CherryTomatoes_163, Greely_211, Myrna_204, Phabba_215, Phrappuccino_133, Pupper_162, RedWattleHog_87, SCentae_161, ScoobyDoobyDoo_204, Settecandela_133, Skog_222, Stormageddon_84,

Summary by start number:

Start 9:

- Found in 219 of 231 (94.8%) of genes in pham
- Manual Annotations of this start: 114 of 192
- Called 56.2% of time when present
- Phage (with cluster) where this start called: Ablatia_219 (C1), Ading_221 (C1), Adlitam_219 (C1), Alice_207 (C1), Amataga_221 (C1), Asterius_222 (C1), Atlantean_220 (C1), BadAgartude_214 (C1), BananaFence_217 (C1), Basquiat_217 (C1), Bipolarisk_218 (C1), Blackbrain_217 (C1), Blackdragon_215 (C1), Blubba_209 (C1), BobaPhatt_212 (C1), Bread_215 (C1), Burrough_222 (C1), Bxz1_210 (C1), Cali_213 (C1), Cane17_211 (C1), Capablanca_225 (C1), Catera_212 (C1), ChaylaJr_218 (C1), ChickenPhender_216 (C1), CindyLou_221 (C1), Daffodil_225 (C1), Darko_219 (C1), DeejaClivia_208 (C1), Delilah_218 (C1), Delylah_222 (C1), DirtMonster_213 (C1), Domi_214 (C1), Drazdys_218 (C1), Duckfeet_214 (C1), EasyJones_223 (C1), Erdmann_221 (C1), ErnieJ_213 (C1), Ewok_219 (C1), FrayBell_223 (C1), FudgeTart_215 (C1), Gabriel_223 (C1), Gamgam_221 (C1), Ghost_220 (C1), Gizmo_226 (C1), GlutenPhree_221 (C1), InigoMontoya_223 (C1), Iota_215 (C1), JPickles_216 (C1), Janiyra_223 (C1), JayJay_222 (C1), Jediah_220 (C1), Jemmno_219 (C1), Jezreel_217 (C1), JulietS_211 (C1), Kboogie_224 (C1), LRRHood_213 (C1), Latch_220 (C1), Lethe_220 (C1), LifeSavor_219 (C1), LinStu_219 (C1), Littleton_223 (C1), Loanshark_217 (C1), LolaVinca_218 (C1), LordLeafolot_221 (C1), Maby2021_220 (C1), Mangeria_221 (C1), Matsumoto_218 (C1), Maturis_217 (C1), McGee_219 (C1), Megamind_217 (C1), Melpomini_215 (C1),

MikeLiesIn_222 (C1), Moby_216 (C1), Naija_221 (C1), Nappy_221 (C1), NedWong_219 (C1), Ngannou_217 (C1), Nidhogg_221 (C1), NoodleTree_226 (C1), Norm_220 (C1), Patter_221 (C1), Phlegm_224 (C1), Phusco_218 (C1), Pier_221 (C1), Pinkcreek_204 (C1), Pio_228 (C1), Pivoine_221 (C1), PurduePete_220 (C1), QBert_212 (C1), Rabinovish_213 (C1), Rahel_221 (C1), Rizal_212 (C1), RoMag_215 (C1), Ronan_216 (C1), Roots515_222 (C1), Sauce_216 (C1), Shelob_221 (C1), ShiaLabeouf_217 (C1), Shifa_197 (C1), Shnickers_218 (C1), Shrimp_222 (C1), SmallFry_220 (C1), SoilZilla_215 (C1), Specks_224 (C1), Spud_214 (C1), SrishMeg2525_217 (C1), StephanieG_216 (C1), StubbySaigey_225 (C1), Substance289_217 (C1), Teardrop_217 (C1), TinyTim_218 (C1), Tortoise16_218 (C1), Trinitium_216 (C1), Turret_213 (C1), Tyke_218 (C1), ValleyTerrace_221 (C1), Wally_218 (C1), Yassified_217 (C1), YemiJoy2021_221 (C1), Yucca_220 (C1), Zalkecks_219 (C1), Zeenon_222 (C1), ZygoTaiga_217 (C1),

Start 10:

- Found in 1 of 231 (0.4%) of genes in pham
- Manual Annotations of this start: 1 of 192
- Called 100.0% of time when present
- Phage (with cluster) where this start called: Finch_86 (singleton),

Start 11:

- Found in 225 of 231 (97.4%) of genes in pham
- Manual Annotations of this start: 71 of 192
- Called 44.4% of time when present
- Phage (with cluster) where this start called: ArcherS7_220 (C1), Astraea_214 (C1), Audrick_222 (C1), Ava3_219 (C1), Babyland_223 (C1), BackyardAgain_216 (C1), Bangla1971_220 (C1), BeanWater_212 (C1), Belieber_213 (C1), Bezza_209 (C1), BigCity_229 (C1), Bigswole_225 (C1), Bonray_222 (C1), Bowman_218 (C1), Breeniome_219 (C1), Cactojaque_215 (C1), Caravan_211 (C1), Chargie21_217 (C1), CharlieB_214 (C1), Chomp_220 (C1), Cleatunium_213 (C1), Colt_211 (C1), DTDevon_222 (C1), Dandelion_228 (C1), Demodog_226 (C1), Derek_217 (C1), Dessert_218 (C1), Dietrick_209 (C1), DrPhinkDaddy_217 (C1), ET08_208 (C1), EggyFarm_229 (C1), EmToTheThree_220 (C1), EmmaElysia_224 (C1), Essence_217 (C1), Fixie_220 (C1), Flabslab_215 (C1), Fludd_220 (C1), Fongie_221 (C1), FoxtrotP1_218 (C1), Grasshills_228 (C1), Greely_211 (C2), Grungle_204 (C1), Guwapp_215 (C1), Halldule_213 (C1), HyRo_208 (C1), I3_230 (C1), IkeLoa_212 (C1), InterFolia_223 (C1), Issimir_213 (C1), Izajani_218 (C1), Jaygup_216 (C1), Jessibeth14_220 (C1), JigglyPuff_227 (C1), JustHall_214 (C1), Kamryn_219 (C1), Khaleesi_219 (C1), Koguma_219 (C1), Labradorite_218 (C1), Lee7_220 (C1), LookingGlass_219 (C1), Lukilu_211 (C1), Lunareta_218 (C1), McWolfish_217 (C1), Mikro_216 (C1), MoMoMixon_218 (C1), Moiqah_215 (C1), Momo_221 (C1), Montpel_218 (C1), Morizzled23_217 (C1), Myrna_204 (C2), Napoleon13_217 (C1), Naval22_225 (C1), NuevoMundo_223 (C1), OrediggerDelux_216 (C1), ParkTD_219 (C1), Phabba_215 (C2), PharkleMinkus_222 (C1), Phox_221 (C1), Phrappuccino_133 (AA), Pleione_224 (C1), Primadonna_215 (C1), Pupusa_224 (C1), Quasimodo_222 (C1), Rocha_217 (C1), SVoro_216 (C1), Salacia_220 (C1), ScoobyDoobyDoo_204 (C2), ScottMcG_214 (C1), Sebata_221 (C1), Settecandela_133 (AA), Shaqnato_211 (C1), SilverDipper_224 (C1), Spec_215 (C1), Sprinklers_218 (C1), Stubby_204 (C1), Tainan_221 (C1), Tonenili_242 (C1), Vortrix_240 (C1), Willis_221 (C1), YoungMoneyMata_219 (C1),

Start 12:

- Found in 2 of 231 (0.9%) of genes in pham

- Manual Annotations of this start: 2 of 192
- Called 100.0% of time when present
- Phage (with cluster) where this start called: RedWattleHog_87 (DX), Stormageddon_84 (DX),

Start 14:

- Found in 4 of 231 (1.7%) of genes in pham
- Manual Annotations of this start: 4 of 192
- Called 100.0% of time when present
- Phage (with cluster) where this start called: CherryTomatoes_163 (DO), Pupper_162 (DO), SCentae_161 (DO), Skog_222 (DO),

Start 20:

- Found in 221 of 231 (95.7%) of genes in pham
- No Manual Annotations of this start.
- Called 0.5% of time when present
- Phage (with cluster) where this start called: Concombre_225 (C1),

Summary by clusters:

There are 6 clusters represented in this pham: AA, DO, singleton, DX, C2, C1,

Info for manual annotations of cluster AA:

- Start number 11 was manually annotated 2 times for cluster AA.

Info for manual annotations of cluster C1:

- Start number 9 was manually annotated 114 times for cluster C1.
- Start number 11 was manually annotated 66 times for cluster C1.

Info for manual annotations of cluster C2:

- Start number 11 was manually annotated 3 times for cluster C2.

Info for manual annotations of cluster DO:

- Start number 14 was manually annotated 4 times for cluster DO.

Info for manual annotations of cluster DX:

- Start number 12 was manually annotated 2 times for cluster DX.

Gene Information:

Gene: Ablatia_219 Start: 122696, Stop: 123721, Start Num: 9

Candidate Starts for Ablatia_219:

(Start: 9 @122696 has 114 MA's), (Start: 11 @122705 has 71 MA's), (17, 122744), (20, 122765), (26, 122840), (28, 122852), (32, 122882), (71, 123164), (75, 123194), (77, 123227), (85, 123290), (94, 123368), (98, 123401), (105, 123431), (123, 123566), (128, 123602), (142, 123716),

Gene: Ading_221 Start: 124316, Stop: 125341, Start Num: 9

Candidate Starts for Ading_221:

(Start: 9 @124316 has 114 MA's), (Start: 11 @124325 has 71 MA's), (17, 124364), (20, 124385), (26, 124460), (28, 124472), (32, 124502), (71, 124784), (75, 124814), (77, 124847), (85, 124910), (94, 124988), (98, 125021), (105, 125051), (123, 125186), (128, 125222), (142, 125336),

Gene: Adlitam_219 Start: 122920, Stop: 123945, Start Num: 9

Candidate Starts for Adlitam_219:

(Start: 9 @122920 has 114 MA's), (Start: 11 @122929 has 71 MA's), (17, 122968), (20, 122989), (26, 123064), (28, 123076), (32, 123106), (71, 123388), (75, 123418), (77, 123451), (85, 123514), (94, 123592), (98, 123625), (105, 123655), (123, 123790), (128, 123826), (142, 123940),

Gene: Alice_207 Start: 121883, Stop: 122914, Start Num: 9

Candidate Starts for Alice_207:

(Start: 9 @121883 has 114 MA's), (Start: 11 @121892 has 71 MA's), (17, 121931), (20, 121952), (26, 122027), (28, 122039), (32, 122069), (47, 122219), (71, 122351), (75, 122381), (77, 122414), (85, 122477), (94, 122555), (98, 122588), (105, 122618), (123, 122753), (128, 122789), (136, 122837), (142, 122909),

Gene: Amataga_221 Start: 122732, Stop: 123757, Start Num: 9

Candidate Starts for Amataga_221:

(Start: 9 @122732 has 114 MA's), (Start: 11 @122741 has 71 MA's), (17, 122780), (20, 122801), (26, 122876), (28, 122888), (32, 122918), (71, 123200), (75, 123230), (77, 123263), (85, 123326), (94, 123404), (98, 123437), (105, 123467), (123, 123602), (128, 123638), (142, 123752),

Gene: ArcherS7_220 Start: 123783, Stop: 124799, Start Num: 11

Candidate Starts for ArcherS7_220:

(Start: 9 @123774 has 114 MA's), (Start: 11 @123783 has 71 MA's), (17, 123822), (20, 123843), (26, 123918), (28, 123930), (32, 123960), (71, 124242), (75, 124272), (77, 124305), (85, 124368), (94, 124446), (98, 124479), (105, 124509), (123, 124644), (128, 124680), (142, 124794),

Gene: Asterius_222 Start: 123141, Stop: 124166, Start Num: 9

Candidate Starts for Asterius_222:

(Start: 9 @123141 has 114 MA's), (Start: 11 @123150 has 71 MA's), (17, 123189), (20, 123210), (26, 123285), (28, 123297), (32, 123327), (71, 123609), (75, 123639), (77, 123672), (85, 123735), (94, 123813), (98, 123846), (105, 123876), (123, 124011), (128, 124047), (142, 124161),

Gene: Astraea_214 Start: 122345, Stop: 123361, Start Num: 11

Candidate Starts for Astraea_214:

(Start: 9 @122336 has 114 MA's), (Start: 11 @122345 has 71 MA's), (17, 122384), (20, 122405), (26, 122480), (28, 122492), (32, 122522), (71, 122804), (75, 122834), (77, 122867), (85, 122930), (94, 123008), (98, 123041), (105, 123071), (123, 123206), (128, 123242), (142, 123356),

Gene: Atlantean_220 Start: 122732, Stop: 123757, Start Num: 9

Candidate Starts for Atlantean_220:

(Start: 9 @122732 has 114 MA's), (Start: 11 @122741 has 71 MA's), (17, 122780), (20, 122801), (26, 122876), (28, 122888), (32, 122918), (71, 123200), (75, 123230), (77, 123263), (85, 123326), (94, 123404), (98, 123437), (105, 123467), (123, 123602), (128, 123638), (142, 123752),

Gene: Audrick_222 Start: 122631, Stop: 123647, Start Num: 11

Candidate Starts for Audrick_222:

(Start: 9 @122622 has 114 MA's), (Start: 11 @122631 has 71 MA's), (17, 122670), (20, 122691), (26, 122766), (28, 122778), (32, 122808), (71, 123090), (75, 123120), (77, 123153), (85, 123216), (94, 123294), (98, 123327), (105, 123357), (123, 123492), (128, 123528), (142, 123642),

Gene: Ava3_219 Start: 123163, Stop: 124179, Start Num: 11

Candidate Starts for Ava3_219:

(Start: 9 @123154 has 114 MA's), (Start: 11 @123163 has 71 MA's), (17, 123202), (20, 123223), (26, 123298), (28, 123310), (32, 123340), (71, 123622), (75, 123652), (77, 123685), (85, 123748), (94, 123826), (98, 123859), (105, 123889), (123, 124024), (128, 124060), (142, 124174),

Gene: Babyland_223 Start: 123518, Stop: 124534, Start Num: 11

Candidate Starts for Babyland_223:

(Start: 9 @123509 has 114 MA's), (Start: 11 @123518 has 71 MA's), (17, 123557), (20, 123578), (26, 123653), (28, 123665), (32, 123695), (71, 123977), (75, 124007), (77, 124040), (85, 124103), (94, 124181), (98, 124214), (105, 124244), (123, 124379), (128, 124415), (142, 124529),

Gene: BackyardAgain_216 Start: 120694, Stop: 121716, Start Num: 11

Candidate Starts for BackyardAgain_216:

(Start: 9 @120685 has 114 MA's), (Start: 11 @120694 has 71 MA's), (17, 120733), (20, 120754), (26, 120829), (28, 120841), (32, 120871), (71, 121153), (75, 121183), (77, 121216), (85, 121279), (94, 121357), (98, 121390), (105, 121420), (123, 121555), (128, 121591), (136, 121639), (142, 121711),

Gene: BadAgartude_214 Start: 122822, Stop: 123847, Start Num: 9

Candidate Starts for BadAgartude_214:

(Start: 9 @122822 has 114 MA's), (Start: 11 @122831 has 71 MA's), (17, 122870), (20, 122891), (26, 122966), (28, 122978), (32, 123008), (71, 123290), (75, 123320), (77, 123353), (85, 123416), (94, 123494), (98, 123527), (105, 123557), (123, 123692), (128, 123728), (142, 123842),

Gene: BananaFence_217 Start: 122965, Stop: 123990, Start Num: 9

Candidate Starts for BananaFence_217:

(Start: 9 @122965 has 114 MA's), (Start: 11 @122974 has 71 MA's), (17, 123013), (20, 123034), (26, 123109), (28, 123121), (32, 123151), (71, 123433), (75, 123463), (77, 123496), (85, 123559), (94, 123637), (98, 123670), (105, 123700), (123, 123835), (128, 123871), (142, 123985),

Gene: Bangla1971_220 Start: 122747, Stop: 123763, Start Num: 11

Candidate Starts for Bangla1971_220:

(Start: 9 @122738 has 114 MA's), (Start: 11 @122747 has 71 MA's), (17, 122786), (20, 122807), (26, 122882), (28, 122894), (32, 122924), (71, 123206), (75, 123236), (77, 123269), (85, 123332), (94, 123410), (98, 123443), (105, 123473), (123, 123608), (128, 123644), (142, 123758),

Gene: Basquiat_217 Start: 121251, Stop: 122276, Start Num: 9

Candidate Starts for Basquiat_217:

(Start: 9 @121251 has 114 MA's), (Start: 11 @121260 has 71 MA's), (17, 121299), (20, 121320), (26, 121395), (28, 121407), (32, 121437), (71, 121719), (75, 121749), (77, 121782), (85, 121845), (94, 121923), (98, 121956), (105, 121986), (123, 122121), (128, 122157), (142, 122271),

Gene: BeanWater_212 Start: 121774, Stop: 122790, Start Num: 11

Candidate Starts for BeanWater_212:

(Start: 9 @121765 has 114 MA's), (Start: 11 @121774 has 71 MA's), (17, 121813), (20, 121834), (26, 121909), (28, 121921), (32, 121951), (71, 122233), (75, 122263), (77, 122296), (85, 122359), (94, 122437), (98, 122470), (105, 122500), (123, 122635), (128, 122671), (142, 122785),

Gene: Belieber_213 Start: 120574, Stop: 121590, Start Num: 11

Candidate Starts for Belieber_213:

(Start: 9 @120565 has 114 MA's), (Start: 11 @120574 has 71 MA's), (17, 120613), (20, 120634), (26, 120709), (28, 120721), (32, 120751), (71, 121033), (75, 121063), (77, 121096), (85, 121159), (94, 121237), (98, 121270), (105, 121300), (123, 121435), (128, 121471), (142, 121585),

Gene: Bezza_209 Start: 122286, Stop: 123302, Start Num: 11

Candidate Starts for Bezza_209:

(Start: 9 @122277 has 114 MA's), (Start: 11 @122286 has 71 MA's), (17, 122325), (20, 122346), (26, 122421), (28, 122433), (32, 122463), (71, 122745), (75, 122775), (77, 122808), (85, 122871), (94, 122949), (98, 122982), (105, 123012), (123, 123147), (128, 123183), (142, 123297),

Gene: BigCity_229 Start: 125345, Stop: 126361, Start Num: 11

Candidate Starts for BigCity_229:

(Start: 9 @125336 has 114 MA's), (Start: 11 @125345 has 71 MA's), (17, 125384), (20, 125405), (26, 125480), (28, 125492), (32, 125522), (71, 125804), (75, 125834), (77, 125867), (85, 125930), (94, 126008), (98, 126041), (105, 126071), (123, 126206), (128, 126242), (142, 126356),

Gene: Bigswole_225 Start: 125199, Stop: 126215, Start Num: 11

Candidate Starts for Bigswole_225:

(Start: 9 @125190 has 114 MA's), (Start: 11 @125199 has 71 MA's), (17, 125238), (20, 125259), (26, 125334), (28, 125346), (32, 125376), (71, 125658), (75, 125688), (77, 125721), (85, 125784), (94, 125862), (98, 125895), (105, 125925), (123, 126060), (128, 126096), (142, 126210),

Gene: Bipolarisk_218 Start: 123423, Stop: 124448, Start Num: 9

Candidate Starts for Bipolarisk_218:

(Start: 9 @123423 has 114 MA's), (Start: 11 @123432 has 71 MA's), (17, 123471), (20, 123492), (26, 123567), (28, 123579), (32, 123609), (71, 123891), (75, 123921), (77, 123954), (85, 124017), (94, 124095), (98, 124128), (105, 124158), (123, 124293), (128, 124329), (142, 124443),

Gene: Blackbrain_217 Start: 122324, Stop: 123349, Start Num: 9

Candidate Starts for Blackbrain_217:

(Start: 9 @122324 has 114 MA's), (Start: 11 @122333 has 71 MA's), (17, 122372), (20, 122393), (26, 122468), (28, 122480), (32, 122510), (71, 122792), (75, 122822), (77, 122855), (85, 122918), (94, 122996), (98, 123029), (105, 123059), (123, 123194), (128, 123230), (142, 123344),

Gene: Blackdragon_215 Start: 123056, Stop: 124081, Start Num: 9

Candidate Starts for Blackdragon_215:

(Start: 9 @123056 has 114 MA's), (Start: 11 @123065 has 71 MA's), (17, 123104), (20, 123125), (26, 123200), (28, 123212), (32, 123242), (71, 123524), (75, 123554), (77, 123587), (85, 123650), (94, 123728), (98, 123761), (105, 123791), (123, 123926), (128, 123962), (142, 124076),

Gene: Blubba_209 Start: 126405, Stop: 127430, Start Num: 9

Candidate Starts for Blubba_209:

(Start: 9 @126405 has 114 MA's), (Start: 11 @126414 has 71 MA's), (17, 126453), (20, 126474), (26, 126549), (28, 126561), (32, 126591), (71, 126873), (75, 126903), (77, 126936), (85, 126999), (94, 127077), (98, 127110), (105, 127140), (123, 127275), (128, 127311), (142, 127425),

Gene: BobaPhatt_212 Start: 121443, Stop: 122468, Start Num: 9

Candidate Starts for BobaPhatt_212:

(Start: 9 @121443 has 114 MA's), (Start: 11 @121452 has 71 MA's), (17, 121491), (20, 121512), (26, 121587), (28, 121599), (32, 121629), (71, 121911), (75, 121941), (77, 121974), (85, 122037), (94, 122115), (98, 122148), (105, 122178), (123, 122313), (128, 122349), (142, 122463),

Gene: Bonray_222 Start: 124834, Stop: 125856, Start Num: 11

Candidate Starts for Bonray_222:

(Start: 9 @124825 has 114 MA's), (Start: 11 @124834 has 71 MA's), (17, 124873), (20, 124894), (26, 124969), (28, 124981), (32, 125011), (71, 125293), (75, 125323), (77, 125356), (85, 125419), (94, 125497), (98, 125530), (105, 125560), (123, 125695), (128, 125731), (136, 125779), (142, 125851),

Gene: Bowman_218 Start: 123952, Stop: 124968, Start Num: 11

Candidate Starts for Bowman_218:

(Start: 9 @123943 has 114 MA's), (Start: 11 @123952 has 71 MA's), (17, 123991), (20, 124012), (26, 124087), (28, 124099), (32, 124129), (71, 124411), (75, 124441), (77, 124474), (85, 124537), (94, 124615), (98, 124648), (105, 124678), (123, 124813), (128, 124849), (142, 124963),

Gene: Bread_215 Start: 122835, Stop: 123860, Start Num: 9

Candidate Starts for Bread_215:

(Start: 9 @122835 has 114 MA's), (Start: 11 @122844 has 71 MA's), (17, 122883), (20, 122904), (26, 122979), (28, 122991), (32, 123021), (71, 123303), (75, 123333), (77, 123366), (85, 123429), (94, 123507), (98, 123540), (105, 123570), (123, 123705), (128, 123741), (142, 123855),

Gene: Breeniome_219 Start: 122298, Stop: 123314, Start Num: 11

Candidate Starts for Breeniome_219:

(Start: 9 @122289 has 114 MA's), (Start: 11 @122298 has 71 MA's), (17, 122337), (20, 122358), (26, 122433), (28, 122445), (32, 122475), (71, 122757), (75, 122787), (77, 122820), (85, 122883), (94, 122961), (98, 122994), (105, 123024), (123, 123159), (128, 123195), (142, 123309),

Gene: Burrough_222 Start: 124605, Stop: 125630, Start Num: 9

Candidate Starts for Burrough_222:

(Start: 9 @124605 has 114 MA's), (Start: 11 @124614 has 71 MA's), (17, 124653), (20, 124674), (26, 124749), (28, 124761), (32, 124791), (71, 125073), (75, 125103), (77, 125136), (85, 125199), (94, 125277), (98, 125310), (105, 125340), (123, 125475), (128, 125511), (142, 125625),

Gene: Bxz1_210 Start: 124811, Stop: 125836, Start Num: 9

Candidate Starts for Bxz1_210:

(Start: 9 @124811 has 114 MA's), (Start: 11 @124820 has 71 MA's), (17, 124859), (20, 124880), (26, 124955), (28, 124967), (32, 124997), (71, 125279), (75, 125309), (77, 125342), (85, 125405), (94, 125483), (98, 125516), (105, 125546), (123, 125681), (128, 125717), (142, 125831),

Gene: Cactojaque_215 Start: 121280, Stop: 122296, Start Num: 11

Candidate Starts for Cactojaque_215:

(Start: 9 @121271 has 114 MA's), (Start: 11 @121280 has 71 MA's), (17, 121319), (20, 121340), (26, 121415), (28, 121427), (32, 121457), (71, 121739), (75, 121769), (77, 121802), (85, 121865), (94, 121943), (98, 121976), (105, 122006), (123, 122141), (128, 122177), (142, 122291),

Gene: Cali_213 Start: 123206, Stop: 124231, Start Num: 9

Candidate Starts for Cali_213:

(Start: 9 @123206 has 114 MA's), (Start: 11 @123215 has 71 MA's), (17, 123254), (20, 123275), (26, 123350), (28, 123362), (32, 123392), (71, 123674), (75, 123704), (77, 123737), (85, 123800), (94, 123878), (98, 123911), (105, 123941), (123, 124076), (128, 124112), (142, 124226),

Gene: Cane17_211 Start: 126814, Stop: 127839, Start Num: 9

Candidate Starts for Cane17_211:

(Start: 9 @126814 has 114 MA's), (Start: 11 @126823 has 71 MA's), (17, 126862), (20, 126883), (26, 126958), (28, 126970), (32, 127000), (71, 127282), (75, 127312), (77, 127345), (85, 127408), (94, 127486), (98, 127519), (105, 127549), (123, 127684), (128, 127720), (142, 127834),

Gene: Capablanca_225 Start: 125420, Stop: 126445, Start Num: 9

Candidate Starts for Capablanca_225:

(Start: 9 @125420 has 114 MA's), (Start: 11 @125429 has 71 MA's), (17, 125468), (20, 125489), (26, 125564), (28, 125576), (32, 125606), (71, 125888), (75, 125918), (77, 125951), (85, 126014), (94, 126092), (98, 126125), (105, 126155), (123, 126290), (128, 126326), (142, 126440),

Gene: Caravan_211 Start: 123549, Stop: 124571, Start Num: 11

Candidate Starts for Caravan_211:

(Start: 9 @123540 has 114 MA's), (Start: 11 @123549 has 71 MA's), (17, 123588), (20, 123609), (26, 123684), (28, 123696), (32, 123726), (71, 124008), (75, 124038), (77, 124071), (85, 124134), (94, 124212), (98, 124245), (105, 124275), (123, 124410), (128, 124446), (136, 124494), (142, 124566),

Gene: Catera_212 Start: 121945, Stop: 122970, Start Num: 9

Candidate Starts for Catera_212:

(Start: 9 @121945 has 114 MA's), (Start: 11 @121954 has 71 MA's), (17, 121993), (20, 122014), (26, 122089), (28, 122101), (32, 122131), (71, 122413), (75, 122443), (77, 122476), (85, 122539), (94, 122617), (98, 122650), (105, 122680), (123, 122815), (128, 122851), (142, 122965),

Gene: Chargie21_217 Start: 121260, Stop: 122276, Start Num: 11

Candidate Starts for Chargie21_217:

(Start: 9 @121251 has 114 MA's), (Start: 11 @121260 has 71 MA's), (17, 121299), (20, 121320), (26, 121395), (28, 121407), (32, 121437), (71, 121719), (75, 121749), (77, 121782), (85, 121845), (94, 121923), (98, 121956), (105, 121986), (123, 122121), (128, 122157), (142, 122271),

Gene: CharlieB_214 Start: 122969, Stop: 123985, Start Num: 11

Candidate Starts for CharlieB_214:

(Start: 9 @122960 has 114 MA's), (Start: 11 @122969 has 71 MA's), (17, 123008), (20, 123029), (26, 123104), (28, 123116), (32, 123146), (71, 123428), (75, 123458), (77, 123491), (85, 123554), (94, 123632), (98, 123665), (105, 123695), (123, 123830), (128, 123866), (142, 123980),

Gene: ChaylaJr_218 Start: 121939, Stop: 122964, Start Num: 9

Candidate Starts for ChaylaJr_218:

(Start: 9 @121939 has 114 MA's), (Start: 11 @121948 has 71 MA's), (17, 121987), (20, 122008), (26, 122083), (28, 122095), (32, 122125), (71, 122407), (75, 122437), (77, 122470), (85, 122533), (94, 122611), (98, 122644), (105, 122674), (123, 122809), (128, 122845), (142, 122959),

Gene: CherryTomatoes_163 Start: 114662, Stop: 115654, Start Num: 14

Candidate Starts for CherryTomatoes_163:

(Start: 14 @114662 has 4 MA's), (22, 114731), (23, 114746), (25, 114764), (26, 114794), (59, 115061), (70, 115106), (77, 115181), (81, 115217), (88, 115295), (94, 115322), (98, 115352), (99, 115355), (104, 115379), (106, 115388), (131, 115562), (134, 115574), (138, 115589), (142, 115646),

Gene: ChickenPhender_216 Start: 121398, Stop: 122423, Start Num: 9

Candidate Starts for ChickenPhender_216:

(Start: 9 @121398 has 114 MA's), (Start: 11 @121407 has 71 MA's), (17, 121446), (20, 121467), (26, 121542), (28, 121554), (32, 121584), (71, 121866), (75, 121896), (77, 121929), (85, 121992), (94, 122070), (98, 122103), (105, 122133), (123, 122268), (128, 122304), (142, 122418),

Gene: Chomp_220 Start: 124030, Stop: 125046, Start Num: 11

Candidate Starts for Chomp_220:

(Start: 9 @124021 has 114 MA's), (Start: 11 @124030 has 71 MA's), (17, 124069), (20, 124090), (26, 124165), (28, 124177), (32, 124207), (71, 124489), (75, 124519), (77, 124552), (85, 124615), (94, 124693), (98, 124726), (105, 124756), (123, 124891), (128, 124927), (142, 125041),

Gene: CindyLou_221 Start: 124281, Stop: 125306, Start Num: 9

Candidate Starts for CindyLou_221:

(Start: 9 @124281 has 114 MA's), (Start: 11 @124290 has 71 MA's), (17, 124329), (20, 124350), (26, 124425), (28, 124437), (32, 124467), (71, 124749), (75, 124779), (77, 124812), (85, 124875), (94,

124953), (98, 124986), (105, 125016), (123, 125151), (128, 125187), (142, 125301),

Gene: Cleatunium_213 Start: 122661, Stop: 123683, Start Num: 11

Candidate Starts for Cleatunium_213:

(Start: 9 @122652 has 114 MA's), (Start: 11 @122661 has 71 MA's), (17, 122700), (20, 122721), (26, 122796), (28, 122808), (32, 122838), (71, 123120), (75, 123150), (77, 123183), (85, 123246), (94, 123324), (98, 123357), (105, 123387), (123, 123522), (128, 123558), (136, 123606), (142, 123678),

Gene: Colt_211 Start: 126054, Stop: 127070, Start Num: 11

Candidate Starts for Colt_211:

(Start: 9 @126045 has 114 MA's), (Start: 11 @126054 has 71 MA's), (17, 126093), (20, 126114), (26, 126189), (28, 126201), (32, 126231), (71, 126513), (75, 126543), (77, 126576), (85, 126639), (94, 126717), (98, 126750), (105, 126780), (123, 126915), (128, 126951), (142, 127065),

Gene: Concombre_225 Start: 124948, Stop: 125904, Start Num: 20

Candidate Starts for Concombre_225:

(Start: 9 @124879 has 114 MA's), (Start: 11 @124888 has 71 MA's), (17, 124927), (20, 124948), (26, 125023), (28, 125035), (32, 125065), (71, 125347), (75, 125377), (77, 125410), (85, 125473), (94, 125551), (98, 125584), (105, 125614), (123, 125749), (128, 125785), (142, 125899),

Gene: DTDevon_222 Start: 124779, Stop: 125795, Start Num: 11

Candidate Starts for DTDevon_222:

(Start: 9 @124770 has 114 MA's), (Start: 11 @124779 has 71 MA's), (17, 124818), (20, 124839), (26, 124914), (28, 124926), (32, 124956), (71, 125238), (75, 125268), (77, 125301), (85, 125364), (94, 125442), (98, 125475), (105, 125505), (123, 125640), (128, 125676), (142, 125790),

Gene: Daffodil_225 Start: 123723, Stop: 124748, Start Num: 9

Candidate Starts for Daffodil_225:

(Start: 9 @123723 has 114 MA's), (Start: 11 @123732 has 71 MA's), (17, 123771), (20, 123792), (26, 123867), (28, 123879), (32, 123909), (71, 124191), (75, 124221), (77, 124254), (85, 124317), (94, 124395), (98, 124428), (105, 124458), (123, 124593), (128, 124629), (142, 124743),

Gene: Dandelion_228 Start: 126372, Stop: 127388, Start Num: 11

Candidate Starts for Dandelion_228:

(Start: 9 @126363 has 114 MA's), (Start: 11 @126372 has 71 MA's), (17, 126411), (20, 126432), (26, 126507), (28, 126519), (32, 126549), (71, 126831), (75, 126861), (77, 126894), (85, 126957), (94, 127035), (98, 127068), (105, 127098), (123, 127233), (128, 127269), (142, 127383),

Gene: Darko_219 Start: 122969, Stop: 123994, Start Num: 9

Candidate Starts for Darko_219:

(Start: 9 @122969 has 114 MA's), (Start: 11 @122978 has 71 MA's), (17, 123017), (20, 123038), (26, 123113), (28, 123125), (32, 123155), (71, 123437), (75, 123467), (77, 123500), (85, 123563), (94, 123641), (98, 123674), (105, 123704), (123, 123839), (128, 123875), (142, 123989),

Gene: DeejaClivia_208 Start: 121099, Stop: 122130, Start Num: 9

Candidate Starts for DeejaClivia_208:

(Start: 9 @121099 has 114 MA's), (Start: 11 @121108 has 71 MA's), (17, 121147), (20, 121168), (26, 121243), (28, 121255), (32, 121285), (71, 121567), (75, 121597), (77, 121630), (85, 121693), (94, 121771), (98, 121804), (105, 121834), (123, 121969), (128, 122005), (136, 122053), (142, 122125),

Gene: Delilah_218 Start: 123853, Stop: 124878, Start Num: 9

Candidate Starts for Delilah_218:

(Start: 9 @123853 has 114 MA's), (Start: 11 @123862 has 71 MA's), (17, 123901), (20, 123922), (26, 123997), (28, 124009), (32, 124039), (71, 124321), (75, 124351), (77, 124384), (85, 124447), (94, 124525), (98, 124558), (105, 124588), (123, 124723), (128, 124759), (142, 124873),

Gene: Delylah_222 Start: 124130, Stop: 125155, Start Num: 9

Candidate Starts for Delylah_222:

(Start: 9 @124130 has 114 MA's), (Start: 11 @124139 has 71 MA's), (17, 124178), (20, 124199), (26, 124274), (28, 124286), (32, 124316), (71, 124598), (75, 124628), (77, 124661), (85, 124724), (94, 124802), (98, 124835), (105, 124865), (123, 125000), (128, 125036), (142, 125150),

Gene: Demodog_226 Start: 124898, Stop: 125914, Start Num: 11

Candidate Starts for Demodog_226:

(Start: 9 @124889 has 114 MA's), (Start: 11 @124898 has 71 MA's), (17, 124937), (20, 124958), (26, 125033), (28, 125045), (32, 125075), (71, 125357), (75, 125387), (77, 125420), (85, 125483), (94, 125561), (98, 125594), (105, 125624), (123, 125759), (128, 125795), (142, 125909),

Gene: Derek_217 Start: 123307, Stop: 124323, Start Num: 11

Candidate Starts for Derek_217:

(Start: 9 @123298 has 114 MA's), (Start: 11 @123307 has 71 MA's), (17, 123346), (20, 123367), (26, 123442), (28, 123454), (32, 123484), (71, 123766), (75, 123796), (77, 123829), (85, 123892), (94, 123970), (98, 124003), (105, 124033), (123, 124168), (128, 124204), (142, 124318),

Gene: Dessert_218 Start: 122307, Stop: 123323, Start Num: 11

Candidate Starts for Dessert_218:

(Start: 9 @122298 has 114 MA's), (Start: 11 @122307 has 71 MA's), (17, 122346), (20, 122367), (26, 122442), (28, 122454), (32, 122484), (71, 122766), (75, 122796), (77, 122829), (85, 122892), (94, 122970), (98, 123003), (105, 123033), (123, 123168), (128, 123204), (142, 123318),

Gene: Dietrick_209 Start: 121983, Stop: 122999, Start Num: 11

Candidate Starts for Dietrick_209:

(Start: 9 @121974 has 114 MA's), (Start: 11 @121983 has 71 MA's), (17, 122022), (20, 122043), (26, 122118), (28, 122130), (32, 122160), (71, 122442), (75, 122472), (77, 122505), (85, 122568), (94, 122646), (98, 122679), (105, 122709), (123, 122844), (128, 122880), (142, 122994),

Gene: DirtMonster_213 Start: 123202, Stop: 124227, Start Num: 9

Candidate Starts for DirtMonster_213:

(Start: 9 @123202 has 114 MA's), (Start: 11 @123211 has 71 MA's), (17, 123250), (20, 123271), (26, 123346), (28, 123358), (32, 123388), (71, 123670), (75, 123700), (77, 123733), (85, 123796), (94, 123874), (98, 123907), (105, 123937), (123, 124072), (128, 124108), (142, 124222),

Gene: Domi_214 Start: 123313, Stop: 124338, Start Num: 9

Candidate Starts for Domi_214:

(Start: 9 @123313 has 114 MA's), (Start: 11 @123322 has 71 MA's), (17, 123361), (20, 123382), (26, 123457), (28, 123469), (32, 123499), (71, 123781), (75, 123811), (77, 123844), (85, 123907), (94, 123985), (98, 124018), (105, 124048), (123, 124183), (128, 124219), (142, 124333),

Gene: DrPhinkDaddy_217 Start: 124510, Stop: 125526, Start Num: 11

Candidate Starts for DrPhinkDaddy_217:

(Start: 9 @124501 has 114 MA's), (Start: 11 @124510 has 71 MA's), (17, 124549), (20, 124570), (26, 124645), (28, 124657), (32, 124687), (71, 124969), (75, 124999), (77, 125032), (85, 125095), (94, 125173), (98, 125206), (105, 125236), (123, 125371), (128, 125407), (142, 125521),

Gene: Drazdys_218 Start: 123415, Stop: 124440, Start Num: 9

Candidate Starts for Drazdys_218:

(Start: 9 @123415 has 114 MA's), (Start: 11 @123424 has 71 MA's), (17, 123463), (20, 123484), (26, 123559), (28, 123571), (32, 123601), (71, 123883), (75, 123913), (77, 123946), (85, 124009), (94, 124087), (98, 124120), (105, 124150), (123, 124285), (128, 124321), (142, 124435),

Gene: Duckfeet_214 Start: 122929, Stop: 123954, Start Num: 9

Candidate Starts for Duckfeet_214:

(Start: 9 @122929 has 114 MA's), (Start: 11 @122938 has 71 MA's), (17, 122977), (20, 122998), (26, 123073), (28, 123085), (32, 123115), (71, 123397), (75, 123427), (77, 123460), (85, 123523), (94, 123601), (98, 123634), (105, 123664), (123, 123799), (128, 123835), (142, 123949),

Gene: ET08_208 Start: 123003, Stop: 124019, Start Num: 11

Candidate Starts for ET08_208:

(Start: 9 @122994 has 114 MA's), (Start: 11 @123003 has 71 MA's), (17, 123042), (20, 123063), (26, 123138), (28, 123150), (32, 123180), (71, 123462), (75, 123492), (77, 123525), (85, 123588), (94, 123666), (98, 123699), (105, 123729), (123, 123864), (128, 123900), (142, 124014),

Gene: EasyJones_223 Start: 122494, Stop: 123519, Start Num: 9

Candidate Starts for EasyJones_223:

(Start: 9 @122494 has 114 MA's), (Start: 11 @122503 has 71 MA's), (17, 122542), (20, 122563), (26, 122638), (28, 122650), (32, 122680), (71, 122962), (75, 122992), (77, 123025), (85, 123088), (94, 123166), (98, 123199), (105, 123229), (123, 123364), (128, 123400), (142, 123514),

Gene: EggyFarm_229 Start: 125346, Stop: 126362, Start Num: 11

Candidate Starts for EggyFarm_229:

(Start: 9 @125337 has 114 MA's), (Start: 11 @125346 has 71 MA's), (17, 125385), (20, 125406), (26, 125481), (28, 125493), (32, 125523), (71, 125805), (75, 125835), (77, 125868), (85, 125931), (94, 126009), (98, 126042), (105, 126072), (123, 126207), (128, 126243), (142, 126357),

Gene: EmToTheThree_220 Start: 123883, Stop: 124905, Start Num: 11

Candidate Starts for EmToTheThree_220:

(Start: 9 @123874 has 114 MA's), (Start: 11 @123883 has 71 MA's), (17, 123922), (20, 123943), (26, 124018), (28, 124030), (32, 124060), (71, 124342), (75, 124372), (77, 124405), (85, 124468), (94, 124546), (98, 124579), (105, 124609), (123, 124744), (128, 124780), (136, 124828), (142, 124900),

Gene: EmmaElysia_224 Start: 124186, Stop: 125202, Start Num: 11

Candidate Starts for EmmaElysia_224:

(Start: 9 @124177 has 114 MA's), (Start: 11 @124186 has 71 MA's), (17, 124225), (20, 124246), (26, 124321), (28, 124333), (32, 124363), (71, 124645), (75, 124675), (77, 124708), (85, 124771), (94, 124849), (98, 124882), (105, 124912), (123, 125047), (128, 125083), (142, 125197),

Gene: Erdmann_221 Start: 123845, Stop: 124870, Start Num: 9

Candidate Starts for Erdmann_221:

(Start: 9 @123845 has 114 MA's), (Start: 11 @123854 has 71 MA's), (17, 123893), (20, 123914), (26, 123989), (28, 124001), (32, 124031), (34, 124088), (71, 124313), (75, 124343), (77, 124376), (85, 124439), (94, 124517), (98, 124550), (105, 124580), (123, 124715), (128, 124751), (142, 124865),

Gene: ErnieJ_213 Start: 120673, Stop: 121698, Start Num: 9

Candidate Starts for ErnieJ_213:

(Start: 9 @120673 has 114 MA's), (Start: 11 @120682 has 71 MA's), (17, 120721), (20, 120742), (26, 120817), (28, 120829), (32, 120859), (71, 121141), (75, 121171), (77, 121204), (85, 121267), (94, 121345), (98, 121378), (105, 121408), (123, 121543), (128, 121579), (142, 121693),

Gene: Essence_217 Start: 122636, Stop: 123652, Start Num: 11

Candidate Starts for Essence_217:

(Start: 9 @122627 has 114 MA's), (Start: 11 @122636 has 71 MA's), (17, 122675), (20, 122696), (26, 122771), (28, 122783), (32, 122813), (71, 123095), (75, 123125), (77, 123158), (85, 123221), (94, 123299), (98, 123332), (105, 123362), (123, 123497), (128, 123533), (142, 123647),

Gene: Ewok_219 Start: 123751, Stop: 124776, Start Num: 9

Candidate Starts for Ewok_219:

(Start: 9 @123751 has 114 MA's), (Start: 11 @123760 has 71 MA's), (17, 123799), (20, 123820), (26, 123895), (28, 123907), (32, 123937), (71, 124219), (75, 124249), (77, 124282), (85, 124345), (94, 124423), (98, 124456), (105, 124486), (123, 124621), (128, 124657), (142, 124771),

Gene: Finch_86 Start: 73939, Stop: 74976, Start Num: 10

Candidate Starts for Finch_86:

(4, 73780), (6, 73822), (7, 73885), (8, 73894), (Start: 9 @73933 has 114 MA's), (Start: 10 @73939 has 1 MA's), (17, 73981), (19, 73996), (27, 74083), (30, 74113), (33, 74149), (37, 74215), (40, 74236), (41, 74239), (42, 74248), (50, 74287), (54, 74329), (58, 74350), (66, 74395), (69, 74407), (75, 74458), (80, 74539), (83, 74554), (84, 74569), (87, 74608), (89, 74632), (90, 74638), (91, 74641), (107, 74713), (117, 74791), (124, 74842), (130, 74881), (137, 74911), (139, 74947),

Gene: Fixie_220 Start: 123416, Stop: 124432, Start Num: 11

Candidate Starts for Fixie_220:

(Start: 9 @123407 has 114 MA's), (Start: 11 @123416 has 71 MA's), (17, 123455), (20, 123476), (26, 123551), (28, 123563), (32, 123593), (71, 123875), (75, 123905), (77, 123938), (85, 124001), (94, 124079), (98, 124112), (105, 124142), (123, 124277), (128, 124313), (142, 124427),

Gene: Flabslab_215 Start: 120812, Stop: 121834, Start Num: 11

Candidate Starts for Flabslab_215:

(Start: 9 @120803 has 114 MA's), (Start: 11 @120812 has 71 MA's), (17, 120851), (20, 120872), (26, 120947), (28, 120959), (32, 120989), (71, 121271), (75, 121301), (77, 121334), (85, 121397), (94, 121475), (98, 121508), (105, 121538), (123, 121673), (128, 121709), (136, 121757), (142, 121829),

Gene: Fludd_220 Start: 122215, Stop: 123231, Start Num: 11

Candidate Starts for Fludd_220:

(Start: 9 @122206 has 114 MA's), (Start: 11 @122215 has 71 MA's), (17, 122254), (20, 122275), (26, 122350), (28, 122362), (32, 122392), (71, 122674), (75, 122704), (77, 122737), (85, 122800), (94, 122878), (98, 122911), (105, 122941), (123, 123076), (128, 123112), (142, 123226),

Gene: Fongie_221 Start: 123795, Stop: 124811, Start Num: 11

Candidate Starts for Fongie_221:

(Start: 9 @123786 has 114 MA's), (Start: 11 @123795 has 71 MA's), (17, 123834), (20, 123855), (26, 123930), (28, 123942), (32, 123972), (71, 124254), (75, 124284), (77, 124317), (85, 124380), (94, 124458), (98, 124491), (105, 124521), (123, 124656), (128, 124692), (142, 124806),

Gene: FoxtrotP1_218 Start: 124440, Stop: 125456, Start Num: 11

Candidate Starts for FoxtrotP1_218:

(Start: 9 @124431 has 114 MA's), (Start: 11 @124440 has 71 MA's), (17, 124479), (20, 124500), (26, 124575), (28, 124587), (32, 124617), (71, 124899), (75, 124929), (77, 124962), (85, 125025), (94, 125103), (98, 125136), (105, 125166), (123, 125301), (128, 125337), (142, 125451),

Gene: FrayBell_223 Start: 122284, Stop: 123309, Start Num: 9

Candidate Starts for FrayBell_223:

(Start: 9 @122284 has 114 MA's), (Start: 11 @122293 has 71 MA's), (17, 122332), (20, 122353), (26, 122428), (28, 122440), (32, 122470), (71, 122752), (75, 122782), (77, 122815), (85, 122878), (94, 122956), (98, 122989), (105, 123019), (123, 123154), (128, 123190), (142, 123304),

Gene: FudgeTart_215 Start: 122898, Stop: 123923, Start Num: 9

Candidate Starts for FudgeTart_215:

(Start: 9 @122898 has 114 MA's), (Start: 11 @122907 has 71 MA's), (17, 122946), (20, 122967), (26, 123042), (28, 123054), (32, 123084), (71, 123366), (75, 123396), (77, 123429), (85, 123492), (94, 123570), (98, 123603), (105, 123633), (123, 123768), (128, 123804), (142, 123918),

Gene: Gabriel_223 Start: 122365, Stop: 123390, Start Num: 9

Candidate Starts for Gabriel_223:

(Start: 9 @122365 has 114 MA's), (Start: 11 @122374 has 71 MA's), (17, 122413), (20, 122434), (26, 122509), (28, 122521), (32, 122551), (71, 122833), (75, 122863), (77, 122896), (85, 122959), (94, 123037), (98, 123070), (105, 123100), (123, 123235), (128, 123271), (142, 123385),

Gene: Gamgam_221 Start: 122722, Stop: 123747, Start Num: 9

Candidate Starts for Gamgam_221:

(Start: 9 @122722 has 114 MA's), (Start: 11 @122731 has 71 MA's), (17, 122770), (20, 122791), (26, 122866), (28, 122878), (32, 122908), (71, 123190), (75, 123220), (77, 123253), (85, 123316), (94, 123394), (98, 123427), (105, 123457), (123, 123592), (128, 123628), (142, 123742),

Gene: Ghost_220 Start: 122643, Stop: 123668, Start Num: 9

Candidate Starts for Ghost_220:

(Start: 9 @122643 has 114 MA's), (Start: 11 @122652 has 71 MA's), (17, 122691), (20, 122712), (26, 122787), (28, 122799), (32, 122829), (71, 123111), (75, 123141), (77, 123174), (85, 123237), (94, 123315), (98, 123348), (105, 123378), (123, 123513), (128, 123549), (142, 123663),

Gene: Gizmo_226 Start: 125761, Stop: 126786, Start Num: 9

Candidate Starts for Gizmo_226:

(Start: 9 @125761 has 114 MA's), (Start: 11 @125770 has 71 MA's), (17, 125809), (20, 125830), (26, 125905), (28, 125917), (32, 125947), (71, 126229), (75, 126259), (77, 126292), (85, 126355), (94, 126433), (98, 126466), (105, 126496), (123, 126631), (128, 126667), (142, 126781),

Gene: GlutenPhree_221 Start: 122733, Stop: 123758, Start Num: 9

Candidate Starts for GlutenPhree_221:

(Start: 9 @122733 has 114 MA's), (Start: 11 @122742 has 71 MA's), (17, 122781), (20, 122802), (26, 122877), (28, 122889), (32, 122919), (71, 123201), (75, 123231), (77, 123264), (85, 123327), (94, 123405), (98, 123438), (105, 123468), (123, 123603), (128, 123639), (142, 123753),

Gene: Grasshills_228 Start: 125345, Stop: 126361, Start Num: 11

Candidate Starts for Grasshills_228:

(Start: 9 @125336 has 114 MA's), (Start: 11 @125345 has 71 MA's), (17, 125384), (20, 125405), (26, 125480), (28, 125492), (32, 125522), (71, 125804), (75, 125834), (77, 125867), (85, 125930), (94, 126008), (98, 126041), (105, 126071), (123, 126206), (128, 126242), (142, 126356),

Gene: Greely_211 Start: 119945, Stop: 120928, Start Num: 11

Candidate Starts for Greely_211:

(Start: 11 @119945 has 71 MA's), (16, 119969), (18, 119990), (26, 120080), (27, 120086), (37, 120215), (38, 120218), (62, 120368), (64, 120371), (96, 120635), (98, 120644), (110, 120701), (112, 120722), (116, 120749), (119, 120755), (128, 120821), (133, 120848), (135, 120857), (141, 120914),

Gene: Grungle_204 Start: 120677, Stop: 121693, Start Num: 11

Candidate Starts for Grungle_204:

(Start: 9 @120668 has 114 MA's), (Start: 11 @120677 has 71 MA's), (17, 120716), (20, 120737), (26, 120812), (28, 120824), (32, 120854), (71, 121136), (75, 121166), (77, 121199), (85, 121262), (94, 121340), (98, 121373), (105, 121403), (123, 121538), (128, 121574), (142, 121688),

Gene: Guwapp_215 Start: 121486, Stop: 122502, Start Num: 11

Candidate Starts for Guwapp_215:

(Start: 9 @121477 has 114 MA's), (Start: 11 @121486 has 71 MA's), (17, 121525), (20, 121546), (26, 121621), (28, 121633), (32, 121663), (71, 121945), (75, 121975), (77, 122008), (85, 122071), (94, 122149), (98, 122182), (105, 122212), (123, 122347), (128, 122383), (142, 122497),

Gene: Halldule_213 Start: 121859, Stop: 122875, Start Num: 11

Candidate Starts for Halldule_213:

(Start: 9 @121850 has 114 MA's), (Start: 11 @121859 has 71 MA's), (17, 121898), (20, 121919), (26, 121994), (28, 122006), (32, 122036), (71, 122318), (75, 122348), (77, 122381), (85, 122444), (94, 122522), (98, 122555), (105, 122585), (123, 122720), (128, 122756), (142, 122870),

Gene: HyRo_208 Start: 121990, Stop: 123012, Start Num: 11

Candidate Starts for HyRo_208:

(Start: 9 @121981 has 114 MA's), (Start: 11 @121990 has 71 MA's), (17, 122029), (20, 122050), (26, 122125), (28, 122137), (32, 122167), (71, 122449), (75, 122479), (77, 122512), (85, 122575), (94, 122653), (98, 122686), (105, 122716), (123, 122851), (128, 122887), (136, 122935), (142, 123007),

Gene: I3_230 Start: 124435, Stop: 125451, Start Num: 11

Candidate Starts for I3_230:

(Start: 9 @124426 has 114 MA's), (Start: 11 @124435 has 71 MA's), (17, 124474), (20, 124495), (26, 124570), (28, 124582), (32, 124612), (71, 124894), (75, 124924), (77, 124957), (85, 125020), (94, 125098), (98, 125131), (105, 125161), (123, 125296), (128, 125332), (142, 125446),

Gene: IkeLoa_212 Start: 122384, Stop: 123400, Start Num: 11

Candidate Starts for IkeLoa_212:

(Start: 9 @122375 has 114 MA's), (Start: 11 @122384 has 71 MA's), (17, 122423), (20, 122444), (26, 122519), (28, 122531), (32, 122561), (71, 122843), (75, 122873), (77, 122906), (85, 122969), (94, 123047), (98, 123080), (105, 123110), (123, 123245), (128, 123281), (142, 123395),

Gene: InigoMontoya_223 Start: 123396, Stop: 124421, Start Num: 9

Candidate Starts for InigoMontoya_223:

(Start: 9 @123396 has 114 MA's), (Start: 11 @123405 has 71 MA's), (17, 123444), (20, 123465), (26, 123540), (28, 123552), (32, 123582), (71, 123864), (75, 123894), (77, 123927), (85, 123990), (94, 124068), (98, 124101), (105, 124131), (123, 124266), (128, 124302), (142, 124416),

Gene: InterFolia_223 Start: 124098, Stop: 125114, Start Num: 11

Candidate Starts for InterFolia_223:

(Start: 9 @124089 has 114 MA's), (Start: 11 @124098 has 71 MA's), (17, 124137), (20, 124158), (26, 124233), (28, 124245), (32, 124275), (71, 124557), (75, 124587), (77, 124620), (85, 124683), (94, 124761), (98, 124794), (105, 124824), (123, 124959), (128, 124995), (142, 125109),

Gene: Iota_215 Start: 123069, Stop: 124094, Start Num: 9

Candidate Starts for Iota_215:

(Start: 9 @123069 has 114 MA's), (Start: 11 @123078 has 71 MA's), (17, 123117), (20, 123138), (26, 123213), (28, 123225), (32, 123255), (71, 123537), (75, 123567), (77, 123600), (85, 123663), (94, 123741), (98, 123774), (105, 123804), (123, 123939), (128, 123975), (142, 124089),

Gene: Issimir_213 Start: 123043, Stop: 124059, Start Num: 11

Candidate Starts for Issimir_213:

(Start: 9 @123034 has 114 MA's), (Start: 11 @123043 has 71 MA's), (17, 123082), (20, 123103), (26, 123178), (28, 123190), (32, 123220), (71, 123502), (75, 123532), (77, 123565), (85, 123628), (94, 123706), (98, 123739), (105, 123769), (123, 123904), (128, 123940), (142, 124054),

Gene: Izajani_218 Start: 123900, Stop: 124916, Start Num: 11

Candidate Starts for Izajani_218:

(Start: 9 @123891 has 114 MA's), (Start: 11 @123900 has 71 MA's), (17, 123939), (20, 123960), (26, 124035), (28, 124047), (32, 124077), (71, 124359), (75, 124389), (77, 124422), (85, 124485), (94, 124563), (98, 124596), (105, 124626), (123, 124761), (128, 124797), (142, 124911),

Gene: JPickles_216 Start: 121381, Stop: 122406, Start Num: 9

Candidate Starts for JPickles_216:

(Start: 9 @121381 has 114 MA's), (Start: 11 @121390 has 71 MA's), (17, 121429), (20, 121450), (26, 121525), (28, 121537), (32, 121567), (71, 121849), (75, 121879), (77, 121912), (85, 121975), (94, 122053), (98, 122086), (105, 122116), (123, 122251), (128, 122287), (142, 122401),

Gene: Janiyra_223 Start: 123621, Stop: 124646, Start Num: 9

Candidate Starts for Janiyra_223:

(Start: 9 @123621 has 114 MA's), (Start: 11 @123630 has 71 MA's), (17, 123669), (20, 123690), (26, 123765), (28, 123777), (32, 123807), (71, 124089), (75, 124119), (77, 124152), (85, 124215), (94, 124293), (98, 124326), (105, 124356), (123, 124491), (128, 124527), (142, 124641),

Gene: JayJay_222 Start: 123313, Stop: 124344, Start Num: 9

Candidate Starts for JayJay_222:

(Start: 9 @123313 has 114 MA's), (Start: 11 @123322 has 71 MA's), (17, 123361), (20, 123382), (26, 123457), (28, 123469), (32, 123499), (71, 123781), (75, 123811), (77, 123844), (85, 123907), (94, 123985), (98, 124018), (105, 124048), (123, 124183), (128, 124219), (136, 124267), (142, 124339),

Gene: Jaygup_216 Start: 122451, Stop: 123467, Start Num: 11

Candidate Starts for Jaygup_216:

(Start: 9 @122442 has 114 MA's), (Start: 11 @122451 has 71 MA's), (17, 122490), (20, 122511), (26, 122586), (28, 122598), (32, 122628), (71, 122910), (75, 122940), (77, 122973), (85, 123036), (94, 123114), (98, 123147), (105, 123177), (123, 123312), (128, 123348), (142, 123462),

Gene: Jedediah_220 Start: 123495, Stop: 124520, Start Num: 9

Candidate Starts for Jedediah_220:

(Start: 9 @123495 has 114 MA's), (Start: 11 @123504 has 71 MA's), (17, 123543), (20, 123564), (26, 123639), (28, 123651), (32, 123681), (71, 123963), (75, 123993), (77, 124026), (85, 124089), (94, 124167), (98, 124200), (105, 124230), (123, 124365), (128, 124401), (142, 124515),

Gene: Jemmno_219 Start: 122324, Stop: 123349, Start Num: 9

Candidate Starts for Jemmno_219:

(Start: 9 @122324 has 114 MA's), (Start: 11 @122333 has 71 MA's), (17, 122372), (20, 122393), (26, 122468), (28, 122480), (32, 122510), (71, 122792), (75, 122822), (77, 122855), (85, 122918), (94, 122996), (98, 123029), (105, 123059), (123, 123194), (128, 123230), (142, 123344),

Gene: Jessibeth14_220 Start: 124509, Stop: 125531, Start Num: 11

Candidate Starts for Jessibeth14_220:

(Start: 9 @124500 has 114 MA's), (Start: 11 @124509 has 71 MA's), (17, 124548), (20, 124569), (26, 124644), (28, 124656), (32, 124686), (71, 124968), (75, 124998), (77, 125031), (85, 125094), (94, 125172), (98, 125205), (105, 125235), (123, 125370), (128, 125406), (136, 125454), (142, 125526),

Gene: Jezreel_217 Start: 123570, Stop: 124595, Start Num: 9

Candidate Starts for Jezreel_217:

(Start: 9 @123570 has 114 MA's), (Start: 11 @123579 has 71 MA's), (17, 123618), (20, 123639), (26, 123714), (28, 123726), (32, 123756), (71, 124038), (75, 124068), (77, 124101), (85, 124164), (94, 124242), (98, 124275), (105, 124305), (123, 124440), (128, 124476), (142, 124590),

Gene: JigglyPuff_227 Start: 124896, Stop: 125912, Start Num: 11

Candidate Starts for JigglyPuff_227:

(Start: 9 @124887 has 114 MA's), (Start: 11 @124896 has 71 MA's), (17, 124935), (20, 124956), (26, 125031), (28, 125043), (32, 125073), (71, 125355), (75, 125385), (77, 125418), (85, 125481), (94, 125559), (98, 125592), (105, 125622), (123, 125757), (128, 125793), (142, 125907),

Gene: JulietS_211 Start: 120610, Stop: 121635, Start Num: 9

Candidate Starts for JulietS_211:

(Start: 9 @120610 has 114 MA's), (Start: 11 @120619 has 71 MA's), (17, 120658), (20, 120679), (26, 120754), (28, 120766), (32, 120796), (71, 121078), (75, 121108), (77, 121141), (85, 121204), (94, 121282), (98, 121315), (105, 121345), (123, 121480), (128, 121516), (142, 121630),

Gene: JustHall_214 Start: 122525, Stop: 123547, Start Num: 11

Candidate Starts for JustHall_214:

(Start: 9 @122516 has 114 MA's), (Start: 11 @122525 has 71 MA's), (17, 122564), (20, 122585), (26, 122660), (28, 122672), (32, 122702), (71, 122984), (75, 123014), (77, 123047), (85, 123110), (94, 123188), (98, 123221), (105, 123251), (123, 123386), (128, 123422), (136, 123470), (142, 123542),

Gene: Kamryn_219 Start: 124155, Stop: 125171, Start Num: 11

Candidate Starts for Kamryn_219:

(Start: 9 @124146 has 114 MA's), (Start: 11 @124155 has 71 MA's), (17, 124194), (20, 124215), (26, 124290), (28, 124302), (32, 124332), (71, 124614), (75, 124644), (77, 124677), (85, 124740), (94, 124818), (98, 124851), (105, 124881), (123, 125016), (128, 125052), (142, 125166),

Gene: Kboogie_224 Start: 123186, Stop: 124211, Start Num: 9

Candidate Starts for Kboogie_224:

(Start: 9 @123186 has 114 MA's), (Start: 11 @123195 has 71 MA's), (17, 123234), (20, 123255), (26, 123330), (28, 123342), (32, 123372), (71, 123654), (75, 123684), (77, 123717), (85, 123780), (94, 123858), (98, 123891), (105, 123921), (123, 124056), (128, 124092), (142, 124206),

Gene: Khaleesi_219 Start: 123976, Stop: 124998, Start Num: 11

Candidate Starts for Khaleesi_219:

(Start: 9 @123967 has 114 MA's), (Start: 11 @123976 has 71 MA's), (17, 124015), (20, 124036), (26, 124111), (28, 124123), (32, 124153), (71, 124435), (75, 124465), (77, 124498), (85, 124561), (94, 124639), (98, 124672), (105, 124702), (123, 124837), (128, 124873), (136, 124921), (142, 124993),

Gene: Koguma_219 Start: 122836, Stop: 123852, Start Num: 11

Candidate Starts for Koguma_219:

(Start: 9 @122827 has 114 MA's), (Start: 11 @122836 has 71 MA's), (17, 122875), (20, 122896), (26, 122971), (28, 122983), (32, 123013), (71, 123295), (75, 123325), (77, 123358), (85, 123421), (94, 123499), (98, 123532), (105, 123562), (123, 123697), (128, 123733), (142, 123847),

Gene: LRRHood_213 Start: 122179, Stop: 123204, Start Num: 9

Candidate Starts for LRRHood_213:

(Start: 9 @122179 has 114 MA's), (Start: 11 @122188 has 71 MA's), (17, 122227), (20, 122248), (26, 122323), (28, 122335), (32, 122365), (71, 122647), (75, 122677), (77, 122710), (85, 122773), (94,

122851), (98, 122884), (105, 122914), (123, 123049), (128, 123085), (142, 123199),

Gene: Labradorite_218 Start: 121942, Stop: 122958, Start Num: 11

Candidate Starts for Labradorite_218:

(Start: 9 @121933 has 114 MA's), (Start: 11 @121942 has 71 MA's), (17, 121981), (20, 122002), (26, 122077), (28, 122089), (32, 122119), (71, 122401), (75, 122431), (77, 122464), (85, 122527), (94, 122605), (98, 122638), (105, 122668), (123, 122803), (128, 122839), (142, 122953),

Gene: Latch_220 Start: 122732, Stop: 123757, Start Num: 9

Candidate Starts for Latch_220:

(Start: 9 @122732 has 114 MA's), (Start: 11 @122741 has 71 MA's), (17, 122780), (20, 122801), (26, 122876), (28, 122888), (32, 122918), (71, 123200), (75, 123230), (77, 123263), (85, 123326), (94, 123404), (98, 123437), (105, 123467), (123, 123602), (128, 123638), (142, 123752),

Gene: Lee7_220 Start: 125356, Stop: 126372, Start Num: 11

Candidate Starts for Lee7_220:

(Start: 9 @125347 has 114 MA's), (Start: 11 @125356 has 71 MA's), (17, 125395), (20, 125416), (26, 125491), (28, 125503), (32, 125533), (71, 125815), (75, 125845), (77, 125878), (85, 125941), (94, 126019), (98, 126052), (105, 126082), (123, 126217), (128, 126253), (142, 126367),

Gene: Lethe_220 Start: 124622, Stop: 125647, Start Num: 9

Candidate Starts for Lethe_220:

(Start: 9 @124622 has 114 MA's), (Start: 11 @124631 has 71 MA's), (17, 124670), (20, 124691), (26, 124766), (28, 124778), (32, 124808), (71, 125090), (75, 125120), (77, 125153), (85, 125216), (94, 125294), (98, 125327), (105, 125357), (123, 125492), (128, 125528), (142, 125642),

Gene: LifeSavor_219 Start: 123257, Stop: 124282, Start Num: 9

Candidate Starts for LifeSavor_219:

(Start: 9 @123257 has 114 MA's), (Start: 11 @123266 has 71 MA's), (17, 123305), (20, 123326), (26, 123401), (28, 123413), (32, 123443), (71, 123725), (75, 123755), (77, 123788), (85, 123851), (94, 123929), (98, 123962), (105, 123992), (123, 124127), (128, 124163), (142, 124277),

Gene: LinStu_219 Start: 122466, Stop: 123491, Start Num: 9

Candidate Starts for LinStu_219:

(Start: 9 @122466 has 114 MA's), (Start: 11 @122475 has 71 MA's), (17, 122514), (20, 122535), (26, 122610), (28, 122622), (32, 122652), (71, 122934), (75, 122964), (77, 122997), (85, 123060), (94, 123138), (98, 123171), (105, 123201), (123, 123336), (128, 123372), (142, 123486),

Gene: Littleton_223 Start: 123969, Stop: 124994, Start Num: 9

Candidate Starts for Littleton_223:

(Start: 9 @123969 has 114 MA's), (Start: 11 @123978 has 71 MA's), (17, 124017), (20, 124038), (26, 124113), (28, 124125), (32, 124155), (71, 124437), (75, 124467), (77, 124500), (85, 124563), (94, 124641), (98, 124674), (105, 124704), (123, 124839), (128, 124875), (142, 124989),

Gene: Loanshark_217 Start: 123282, Stop: 124307, Start Num: 9

Candidate Starts for Loanshark_217:

(Start: 9 @123282 has 114 MA's), (Start: 11 @123291 has 71 MA's), (17, 123330), (20, 123351), (26, 123426), (28, 123438), (32, 123468), (71, 123750), (75, 123780), (77, 123813), (85, 123876), (94, 123954), (98, 123987), (105, 124017), (123, 124152), (128, 124188), (142, 124302),

Gene: LolaVinca_218 Start: 123519, Stop: 124544, Start Num: 9

Candidate Starts for LolaVinca_218:

(Start: 9 @123519 has 114 MA's), (Start: 11 @123528 has 71 MA's), (17, 123567), (20, 123588), (26, 123663), (28, 123675), (32, 123705), (71, 123987), (75, 124017), (77, 124050), (85, 124113), (94, 124191), (98, 124224), (105, 124254), (123, 124389), (128, 124425), (142, 124539),

Gene: LookingGlass_219 Start: 123486, Stop: 124502, Start Num: 11

Candidate Starts for LookingGlass_219:

(Start: 9 @123477 has 114 MA's), (Start: 11 @123486 has 71 MA's), (17, 123525), (20, 123546), (26, 123621), (28, 123633), (32, 123663), (71, 123945), (75, 123975), (77, 124008), (85, 124071), (94, 124149), (98, 124182), (105, 124212), (123, 124347), (128, 124383), (142, 124497),

Gene: LordLeafolot_221 Start: 123132, Stop: 124157, Start Num: 9

Candidate Starts for LordLeafolot_221:

(Start: 9 @123132 has 114 MA's), (Start: 11 @123141 has 71 MA's), (17, 123180), (20, 123201), (26, 123276), (28, 123288), (32, 123318), (71, 123600), (75, 123630), (77, 123663), (85, 123726), (94, 123804), (98, 123837), (105, 123867), (123, 124002), (128, 124038), (142, 124152),

Gene: Lukilu_211 Start: 124191, Stop: 125207, Start Num: 11

Candidate Starts for Lukilu_211:

(Start: 9 @124182 has 114 MA's), (Start: 11 @124191 has 71 MA's), (17, 124230), (20, 124251), (26, 124326), (28, 124338), (32, 124368), (71, 124650), (75, 124680), (77, 124713), (85, 124776), (94, 124854), (98, 124887), (105, 124917), (123, 125052), (128, 125088), (142, 125202),

Gene: Lunareta_218 Start: 123834, Stop: 124856, Start Num: 11

Candidate Starts for Lunareta_218:

(Start: 9 @123825 has 114 MA's), (Start: 11 @123834 has 71 MA's), (17, 123873), (20, 123894), (26, 123969), (28, 123981), (32, 124011), (71, 124293), (75, 124323), (77, 124356), (85, 124419), (94, 124497), (98, 124530), (105, 124560), (123, 124695), (128, 124731), (136, 124779), (142, 124851),

Gene: Maby2021_220 Start: 124423, Stop: 125448, Start Num: 9

Candidate Starts for Maby2021_220:

(Start: 9 @124423 has 114 MA's), (Start: 11 @124432 has 71 MA's), (17, 124471), (20, 124492), (26, 124567), (28, 124579), (32, 124609), (71, 124891), (75, 124921), (77, 124954), (85, 125017), (94, 125095), (98, 125128), (105, 125158), (123, 125293), (128, 125329), (142, 125443),

Gene: Mangeria_221 Start: 124525, Stop: 125550, Start Num: 9

Candidate Starts for Mangeria_221:

(Start: 9 @124525 has 114 MA's), (Start: 11 @124534 has 71 MA's), (17, 124573), (20, 124594), (26, 124669), (28, 124681), (32, 124711), (71, 124993), (75, 125023), (77, 125056), (85, 125119), (94, 125197), (98, 125230), (105, 125260), (123, 125395), (128, 125431), (142, 125545),

Gene: Matsumoto_218 Start: 123174, Stop: 124199, Start Num: 9

Candidate Starts for Matsumoto_218:

(Start: 9 @123174 has 114 MA's), (Start: 11 @123183 has 71 MA's), (17, 123222), (20, 123243), (26, 123318), (28, 123330), (32, 123360), (71, 123642), (75, 123672), (77, 123705), (85, 123768), (94, 123846), (98, 123879), (105, 123909), (123, 124044), (128, 124080), (142, 124194),

Gene: Maturis_217 Start: 122681, Stop: 123712, Start Num: 9

Candidate Starts for Maturis_217:

(Start: 9 @122681 has 114 MA's), (Start: 11 @122690 has 71 MA's), (17, 122729), (20, 122750), (26, 122825), (28, 122837), (32, 122867), (71, 123149), (75, 123179), (77, 123212), (85, 123275), (94, 123353), (98, 123386), (105, 123416), (123, 123551), (128, 123587), (136, 123635), (142, 123707),

Gene: McGee_219 Start: 122368, Stop: 123393, Start Num: 9

Candidate Starts for McGee_219:

(Start: 9 @122368 has 114 MA's), (Start: 11 @122377 has 71 MA's), (17, 122416), (20, 122437), (26, 122512), (28, 122524), (32, 122554), (71, 122836), (75, 122866), (77, 122899), (85, 122962), (94, 123040), (98, 123073), (105, 123103), (123, 123238), (128, 123274), (142, 123388),

Gene: McWolfish_217 Start: 123187, Stop: 124209, Start Num: 11

Candidate Starts for McWolfish_217:

(Start: 9 @123178 has 114 MA's), (Start: 11 @123187 has 71 MA's), (17, 123226), (20, 123247), (26, 123322), (28, 123334), (32, 123364), (71, 123646), (75, 123676), (77, 123709), (85, 123772), (94, 123850), (98, 123883), (105, 123913), (123, 124048), (128, 124084), (136, 124132), (142, 124204),

Gene: Megamind_217 Start: 123469, Stop: 124494, Start Num: 9

Candidate Starts for Megamind_217:

(Start: 9 @123469 has 114 MA's), (Start: 11 @123478 has 71 MA's), (17, 123517), (20, 123538), (26, 123613), (28, 123625), (32, 123655), (71, 123937), (75, 123967), (77, 124000), (85, 124063), (94, 124141), (98, 124174), (105, 124204), (123, 124339), (128, 124375), (142, 124489),

Gene: Melpomini_215 Start: 122266, Stop: 123291, Start Num: 9

Candidate Starts for Melpomini_215:

(Start: 9 @122266 has 114 MA's), (Start: 11 @122275 has 71 MA's), (17, 122314), (20, 122335), (26, 122410), (28, 122422), (32, 122452), (71, 122734), (75, 122764), (77, 122797), (85, 122860), (94, 122938), (98, 122971), (105, 123001), (123, 123136), (128, 123172), (142, 123286),

Gene: MikeLiesIn_222 Start: 124605, Stop: 125630, Start Num: 9

Candidate Starts for MikeLiesIn_222:

(Start: 9 @124605 has 114 MA's), (Start: 11 @124614 has 71 MA's), (17, 124653), (20, 124674), (26, 124749), (28, 124761), (32, 124791), (71, 125073), (75, 125103), (77, 125136), (85, 125199), (94, 125277), (98, 125310), (105, 125340), (123, 125475), (128, 125511), (142, 125625),

Gene: Mikro_216 Start: 125163, Stop: 126179, Start Num: 11

Candidate Starts for Mikro_216:

(Start: 9 @125154 has 114 MA's), (Start: 11 @125163 has 71 MA's), (17, 125202), (20, 125223), (26, 125298), (28, 125310), (32, 125340), (71, 125622), (75, 125652), (77, 125685), (85, 125748), (94, 125826), (98, 125859), (105, 125889), (123, 126024), (128, 126060), (142, 126174),

Gene: MoMoMixon_218 Start: 123653, Stop: 124675, Start Num: 11

Candidate Starts for MoMoMixon_218:

(Start: 9 @123644 has 114 MA's), (Start: 11 @123653 has 71 MA's), (17, 123692), (20, 123713), (26, 123788), (28, 123800), (32, 123830), (71, 124112), (75, 124142), (77, 124175), (85, 124238), (94, 124316), (98, 124349), (105, 124379), (123, 124514), (128, 124550), (136, 124598), (142, 124670),

Gene: Moby_216 Start: 121626, Stop: 122657, Start Num: 9

Candidate Starts for Moby_216:

(Start: 9 @121626 has 114 MA's), (Start: 11 @121635 has 71 MA's), (17, 121674), (20, 121695), (26, 121770), (28, 121782), (32, 121812), (71, 122094), (75, 122124), (77, 122157), (85, 122220), (94, 122298), (98, 122331), (105, 122361), (123, 122496), (128, 122532), (136, 122580), (142, 122652),

Gene: Moiqah_215 Start: 121612, Stop: 122634, Start Num: 11

Candidate Starts for Moiqah_215:

(Start: 9 @121603 has 114 MA's), (Start: 11 @121612 has 71 MA's), (17, 121651), (20, 121672), (26, 121747), (28, 121759), (32, 121789), (71, 122071), (75, 122101), (77, 122134), (85, 122197), (94, 122275), (98, 122308), (105, 122338), (123, 122473), (128, 122509), (136, 122557), (142, 122629),

Gene: Momo_221 Start: 122741, Stop: 123757, Start Num: 11

Candidate Starts for Momo_221:

(Start: 9 @122732 has 114 MA's), (Start: 11 @122741 has 71 MA's), (17, 122780), (20, 122801), (26, 122876), (28, 122888), (32, 122918), (71, 123200), (75, 123230), (77, 123263), (85, 123326), (94, 123404), (98, 123437), (105, 123467), (123, 123602), (128, 123638), (142, 123752),

Gene: Montpel_218 Start: 123832, Stop: 124854, Start Num: 11

Candidate Starts for Montpel_218:

(Start: 9 @123823 has 114 MA's), (Start: 11 @123832 has 71 MA's), (17, 123871), (20, 123892), (26, 123967), (28, 123979), (32, 124009), (71, 124291), (75, 124321), (77, 124354), (85, 124417), (94, 124495), (98, 124528), (105, 124558), (123, 124693), (128, 124729), (136, 124777), (142, 124849),

Gene: Morizzled23_217 Start: 122108, Stop: 123124, Start Num: 11

Candidate Starts for Morizzled23_217:

(Start: 9 @122099 has 114 MA's), (Start: 11 @122108 has 71 MA's), (17, 122147), (20, 122168), (26, 122243), (28, 122255), (32, 122285), (71, 122567), (75, 122597), (77, 122630), (85, 122693), (94, 122771), (98, 122804), (105, 122834), (123, 122969), (128, 123005), (142, 123119),

Gene: Myrna_204 Start: 119318, Stop: 120304, Start Num: 11

Candidate Starts for Myrna_204:

(Start: 11 @119318 has 71 MA's), (15, 119336), (16, 119342), (18, 119363), (20, 119378), (26, 119453), (37, 119588), (38, 119591), (72, 119804), (73, 119807), (76, 119828), (77, 119849), (93, 119987), (102, 120035), (110, 120077), (128, 120197), (133, 120224), (135, 120233), (141, 120290),

Gene: Naija_221 Start: 123435, Stop: 124460, Start Num: 9

Candidate Starts for Naija_221:

(Start: 9 @123435 has 114 MA's), (Start: 11 @123444 has 71 MA's), (17, 123483), (20, 123504), (26, 123579), (28, 123591), (32, 123621), (71, 123903), (75, 123933), (77, 123966), (85, 124029), (94, 124107), (98, 124140), (105, 124170), (123, 124305), (128, 124341), (142, 124455),

Gene: Napoleon13_217 Start: 122472, Stop: 123488, Start Num: 11

Candidate Starts for Napoleon13_217:

(Start: 9 @122463 has 114 MA's), (Start: 11 @122472 has 71 MA's), (17, 122511), (20, 122532), (26, 122607), (28, 122619), (32, 122649), (71, 122931), (75, 122961), (77, 122994), (85, 123057), (94, 123135), (98, 123168), (105, 123198), (123, 123333), (128, 123369), (142, 123483),

Gene: Nappy_221 Start: 124124, Stop: 125149, Start Num: 9

Candidate Starts for Nappy_221:

(Start: 9 @124124 has 114 MA's), (Start: 11 @124133 has 71 MA's), (17, 124172), (20, 124193), (26, 124268), (28, 124280), (32, 124310), (71, 124592), (75, 124622), (77, 124655), (85, 124718), (94, 124796), (98, 124829), (105, 124859), (123, 124994), (128, 125030), (142, 125144),

Gene: Naval22_225 Start: 125221, Stop: 126237, Start Num: 11

Candidate Starts for Naval22_225:

(Start: 9 @125212 has 114 MA's), (Start: 11 @125221 has 71 MA's), (17, 125260), (20, 125281), (26, 125356), (28, 125368), (32, 125398), (71, 125680), (75, 125710), (77, 125743), (85, 125806), (94, 125884), (98, 125917), (105, 125947), (123, 126082), (128, 126118), (142, 126232),

Gene: NedWong_219 Start: 123856, Stop: 124881, Start Num: 9

Candidate Starts for NedWong_219:

(Start: 9 @123856 has 114 MA's), (Start: 11 @123865 has 71 MA's), (17, 123904), (20, 123925), (26, 124000), (28, 124012), (32, 124042), (71, 124324), (75, 124354), (77, 124387), (85, 124450), (94, 124528), (98, 124561), (105, 124591), (123, 124726), (128, 124762), (142, 124876),

Gene: Ngannou_217 Start: 121714, Stop: 122739, Start Num: 9

Candidate Starts for Ngannou_217:

(Start: 9 @121714 has 114 MA's), (Start: 11 @121723 has 71 MA's), (17, 121762), (20, 121783), (26, 121858), (28, 121870), (32, 121900), (71, 122182), (75, 122212), (77, 122245), (85, 122308), (94, 122386), (98, 122419), (105, 122449), (123, 122584), (128, 122620), (142, 122734),

Gene: Nidhogg_221 Start: 124261, Stop: 125286, Start Num: 9

Candidate Starts for Nidhogg_221:

(Start: 9 @124261 has 114 MA's), (Start: 11 @124270 has 71 MA's), (17, 124309), (20, 124330), (26, 124405), (28, 124417), (32, 124447), (71, 124729), (75, 124759), (77, 124792), (85, 124855), (94, 124933), (98, 124966), (105, 124996), (123, 125131), (128, 125167), (142, 125281),

Gene: NoodleTree_226 Start: 124156, Stop: 125181, Start Num: 9

Candidate Starts for NoodleTree_226:

(Start: 9 @124156 has 114 MA's), (Start: 11 @124165 has 71 MA's), (17, 124204), (20, 124225), (26, 124300), (28, 124312), (32, 124342), (71, 124624), (75, 124654), (77, 124687), (85, 124750), (94, 124828), (98, 124861), (105, 124891), (123, 125026), (128, 125062), (142, 125176),

Gene: Norm_220 Start: 124161, Stop: 125186, Start Num: 9

Candidate Starts for Norm_220:

(Start: 9 @124161 has 114 MA's), (Start: 11 @124170 has 71 MA's), (17, 124209), (20, 124230), (26, 124305), (28, 124317), (32, 124347), (71, 124629), (75, 124659), (77, 124692), (85, 124755), (94, 124833), (98, 124866), (105, 124896), (123, 125031), (128, 125067), (142, 125181),

Gene: NuevoMundo_223 Start: 124726, Stop: 125742, Start Num: 11

Candidate Starts for NuevoMundo_223:

(Start: 9 @124717 has 114 MA's), (Start: 11 @124726 has 71 MA's), (17, 124765), (20, 124786), (26, 124861), (28, 124873), (32, 124903), (71, 125185), (75, 125215), (77, 125248), (85, 125311), (94, 125389), (98, 125422), (105, 125452), (123, 125587), (128, 125623), (142, 125737),

Gene: OrediggerDelux_216 Start: 124397, Stop: 125413, Start Num: 11

Candidate Starts for OrediggerDelux_216:

(Start: 9 @124388 has 114 MA's), (Start: 11 @124397 has 71 MA's), (17, 124436), (20, 124457), (26, 124532), (28, 124544), (32, 124574), (71, 124856), (75, 124886), (77, 124919), (85, 124982), (94, 125060), (98, 125093), (105, 125123), (123, 125258), (128, 125294), (142, 125408),

Gene: ParkTD_219 Start: 123741, Stop: 124757, Start Num: 11

Candidate Starts for ParkTD_219:

(Start: 9 @123732 has 114 MA's), (Start: 11 @123741 has 71 MA's), (17, 123780), (20, 123801), (26, 123876), (28, 123888), (32, 123918), (71, 124200), (75, 124230), (77, 124263), (85, 124326), (94, 124404), (98, 124437), (105, 124467), (123, 124602), (128, 124638), (142, 124752),

Gene: Patter_221 Start: 122746, Stop: 123771, Start Num: 9

Candidate Starts for Patter_221:

(Start: 9 @122746 has 114 MA's), (Start: 11 @122755 has 71 MA's), (17, 122794), (20, 122815), (26, 122890), (28, 122902), (32, 122932), (71, 123214), (75, 123244), (77, 123277), (85, 123340), (94, 123418), (98, 123451), (105, 123481), (123, 123616), (128, 123652), (142, 123766),

Gene: Phabba_215 Start: 119296, Stop: 120279, Start Num: 11

Candidate Starts for Phabba_215:

(1, 118633), (3, 118768), (Start: 11 @119296 has 71 MA's), (16, 119320), (18, 119341), (27, 119437), (37, 119566), (38, 119569), (43, 119602), (62, 119719), (64, 119722), (79, 119842), (84, 119884), (96,

119986), (98, 119995), (110, 120052), (119, 120106), (128, 120172), (133, 120199), (135, 120208), (141, 120265),

Gene: PharkleMinkus_222 Start: 122292, Stop: 123308, Start Num: 11

Candidate Starts for PharkleMinkus_222:

(Start: 9 @122283 has 114 MA's), (Start: 11 @122292 has 71 MA's), (17, 122331), (20, 122352), (26, 122427), (28, 122439), (32, 122469), (71, 122751), (75, 122781), (77, 122814), (85, 122877), (94, 122955), (98, 122988), (105, 123018), (123, 123153), (128, 123189), (142, 123303),

Gene: Phlegm_224 Start: 123435, Stop: 124460, Start Num: 9

Candidate Starts for Phlegm_224:

(Start: 9 @123435 has 114 MA's), (Start: 11 @123444 has 71 MA's), (17, 123483), (20, 123504), (26, 123579), (28, 123591), (32, 123621), (71, 123903), (75, 123933), (77, 123966), (85, 124029), (94, 124107), (98, 124140), (105, 124170), (123, 124305), (128, 124341), (142, 124455),

Gene: Phox_221 Start: 123394, Stop: 124410, Start Num: 11

Candidate Starts for Phox_221:

(Start: 9 @123385 has 114 MA's), (Start: 11 @123394 has 71 MA's), (17, 123433), (20, 123454), (26, 123529), (28, 123541), (32, 123571), (71, 123853), (75, 123883), (77, 123916), (85, 123979), (94, 124057), (98, 124090), (105, 124120), (123, 124255), (128, 124291), (142, 124405),

Gene: Phrappuccino_133 Start: 95976, Stop: 97007, Start Num: 11

Candidate Starts for Phrappuccino_133:

(Start: 11 @95976 has 71 MA's), (21, 96036), (23, 96060), (26, 96108), (32, 96150), (45, 96288), (55, 96354), (60, 96390), (67, 96426), (68, 96429), (73, 96471), (86, 96594), (98, 96693), (101, 96711), (103, 96717), (108, 96750), (111, 96786), (118, 96822), (132, 96915), (142, 96996),

Gene: Phusco_218 Start: 122267, Stop: 123292, Start Num: 9

Candidate Starts for Phusco_218:

(Start: 9 @122267 has 114 MA's), (Start: 11 @122276 has 71 MA's), (17, 122315), (20, 122336), (26, 122411), (28, 122423), (32, 122453), (71, 122735), (75, 122765), (77, 122798), (85, 122861), (94, 122939), (98, 122972), (105, 123002), (123, 123137), (128, 123173), (142, 123287),

Gene: Pier_221 Start: 124262, Stop: 125287, Start Num: 9

Candidate Starts for Pier_221:

(Start: 9 @124262 has 114 MA's), (Start: 11 @124271 has 71 MA's), (17, 124310), (20, 124331), (26, 124406), (28, 124418), (32, 124448), (71, 124730), (75, 124760), (77, 124793), (85, 124856), (94, 124934), (98, 124967), (105, 124997), (123, 125132), (128, 125168), (142, 125282),

Gene: Pinkcreek_204 Start: 121638, Stop: 122663, Start Num: 9

Candidate Starts for Pinkcreek_204:

(Start: 9 @121638 has 114 MA's), (Start: 11 @121647 has 71 MA's), (17, 121686), (20, 121707), (26, 121782), (28, 121794), (32, 121824), (71, 122106), (75, 122136), (77, 122169), (85, 122232), (94, 122310), (98, 122343), (105, 122373), (123, 122508), (128, 122544), (142, 122658),

Gene: Pio_228 Start: 125466, Stop: 126491, Start Num: 9

Candidate Starts for Pio_228:

(Start: 9 @125466 has 114 MA's), (Start: 11 @125475 has 71 MA's), (17, 125514), (20, 125535), (26, 125610), (28, 125622), (32, 125652), (71, 125934), (75, 125964), (77, 125997), (85, 126060), (94, 126138), (98, 126171), (105, 126201), (123, 126336), (128, 126372), (142, 126486),

Gene: Pivoine_221 Start: 123435, Stop: 124460, Start Num: 9

Candidate Starts for Pivoine_221:

(Start: 9 @123435 has 114 MA's), (Start: 11 @123444 has 71 MA's), (17, 123483), (20, 123504), (26, 123579), (28, 123591), (32, 123621), (71, 123903), (75, 123933), (77, 123966), (85, 124029), (94, 124107), (98, 124140), (105, 124170), (123, 124305), (128, 124341), (142, 124455),

Gene: Pleione_224 Start: 124207, Stop: 125223, Start Num: 11

Candidate Starts for Pleione_224:

(Start: 9 @124198 has 114 MA's), (Start: 11 @124207 has 71 MA's), (17, 124246), (20, 124267), (26, 124342), (28, 124354), (32, 124384), (71, 124666), (75, 124696), (77, 124729), (85, 124792), (94, 124870), (98, 124903), (105, 124933), (123, 125068), (128, 125104), (142, 125218),

Gene: Primadonna_215 Start: 123105, Stop: 124121, Start Num: 11

Candidate Starts for Primadonna_215:

(Start: 9 @123096 has 114 MA's), (Start: 11 @123105 has 71 MA's), (17, 123144), (20, 123165), (26, 123240), (28, 123252), (32, 123282), (71, 123564), (75, 123594), (77, 123627), (85, 123690), (94, 123768), (98, 123801), (105, 123831), (123, 123966), (128, 124002), (142, 124116),

Gene: Pupper_162 Start: 114902, Stop: 115894, Start Num: 14

Candidate Starts for Pupper_162:

(Start: 14 @114902 has 4 MA's), (22, 114971), (23, 114986), (25, 115004), (26, 115034), (59, 115301), (70, 115346), (77, 115421), (81, 115457), (88, 115535), (94, 115562), (98, 115592), (99, 115595), (104, 115619), (106, 115628), (131, 115802), (134, 115814), (138, 115829), (142, 115886),

Gene: Pupusa_224 Start: 124771, Stop: 125787, Start Num: 11

Candidate Starts for Pupusa_224:

(Start: 9 @124762 has 114 MA's), (Start: 11 @124771 has 71 MA's), (17, 124810), (20, 124831), (26, 124906), (28, 124918), (32, 124948), (71, 125230), (75, 125260), (77, 125293), (85, 125356), (94, 125434), (98, 125467), (105, 125497), (123, 125632), (128, 125668), (142, 125782),

Gene: PurduePete_220 Start: 124426, Stop: 125451, Start Num: 9

Candidate Starts for PurduePete_220:

(Start: 9 @124426 has 114 MA's), (Start: 11 @124435 has 71 MA's), (17, 124474), (20, 124495), (26, 124570), (28, 124582), (32, 124612), (71, 124894), (75, 124924), (77, 124957), (85, 125020), (94, 125098), (98, 125131), (105, 125161), (123, 125296), (128, 125332), (142, 125446),

Gene: QBert_212 Start: 121786, Stop: 122811, Start Num: 9

Candidate Starts for QBert_212:

(Start: 9 @121786 has 114 MA's), (Start: 11 @121795 has 71 MA's), (17, 121834), (20, 121855), (26, 121930), (28, 121942), (32, 121972), (71, 122254), (75, 122284), (77, 122317), (85, 122380), (94, 122458), (98, 122491), (105, 122521), (123, 122656), (128, 122692), (142, 122806),

Gene: Quasimodo_222 Start: 123077, Stop: 124093, Start Num: 11

Candidate Starts for Quasimodo_222:

(Start: 9 @123068 has 114 MA's), (Start: 11 @123077 has 71 MA's), (17, 123116), (20, 123137), (26, 123212), (28, 123224), (32, 123254), (71, 123536), (75, 123566), (77, 123599), (85, 123662), (94, 123740), (98, 123773), (105, 123803), (123, 123938), (128, 123974), (142, 124088),

Gene: Rabinovish_213 Start: 123331, Stop: 124362, Start Num: 9

Candidate Starts for Rabinovish_213:

(Start: 9 @123331 has 114 MA's), (Start: 11 @123340 has 71 MA's), (17, 123379), (20, 123400), (26, 123475), (28, 123487), (32, 123517), (71, 123799), (75, 123829), (77, 123862), (85, 123925), (94, 124003), (98, 124036), (105, 124066), (123, 124201), (128, 124237), (136, 124285), (142, 124357),

Gene: Rahel_221 Start: 123170, Stop: 124195, Start Num: 9

Candidate Starts for Rahel_221:

(Start: 9 @123170 has 114 MA's), (Start: 11 @123179 has 71 MA's), (17, 123218), (20, 123239), (26, 123314), (28, 123326), (32, 123356), (71, 123638), (75, 123668), (77, 123701), (85, 123764), (94, 123842), (98, 123875), (105, 123905), (123, 124040), (128, 124076), (142, 124190),

Gene: RedWattleHog_87 Start: 79266, Stop: 80351, Start Num: 12

Candidate Starts for RedWattleHog_87:

(Start: 12 @79266 has 2 MA's), (17, 79302), (20, 79323), (35, 79518), (46, 79608), (49, 79635), (51, 79638), (52, 79659), (53, 79671), (61, 79713), (63, 79722), (65, 79734), (74, 79791), (78, 79836), (81, 79872), (82, 79878), (95, 79995), (97, 80007), (100, 80016), (102, 80025), (108, 80058), (109, 80067), (115, 80112), (124, 80184), (126, 80193), (127, 80211),

Gene: Rizal_212 Start: 121688, Stop: 122713, Start Num: 9

Candidate Starts for Rizal_212:

(Start: 9 @121688 has 114 MA's), (Start: 11 @121697 has 71 MA's), (17, 121736), (20, 121757), (26, 121832), (28, 121844), (32, 121874), (71, 122156), (75, 122186), (77, 122219), (85, 122282), (94, 122360), (98, 122393), (105, 122423), (123, 122558), (128, 122594), (142, 122708),

Gene: RoMag_215 Start: 123469, Stop: 124494, Start Num: 9

Candidate Starts for RoMag_215:

(Start: 9 @123469 has 114 MA's), (Start: 11 @123478 has 71 MA's), (17, 123517), (20, 123538), (26, 123613), (28, 123625), (32, 123655), (71, 123937), (75, 123967), (77, 124000), (85, 124063), (94, 124141), (98, 124174), (105, 124204), (123, 124339), (128, 124375), (142, 124489),

Gene: Rocha_217 Start: 122921, Stop: 123937, Start Num: 11

Candidate Starts for Rocha_217:

(Start: 9 @122912 has 114 MA's), (Start: 11 @122921 has 71 MA's), (17, 122960), (20, 122981), (26, 123056), (28, 123068), (32, 123098), (71, 123380), (75, 123410), (77, 123443), (85, 123506), (94, 123584), (98, 123617), (105, 123647), (123, 123782), (128, 123818), (142, 123932),

Gene: Ronan_216 Start: 121861, Stop: 122886, Start Num: 9

Candidate Starts for Ronan_216:

(Start: 9 @121861 has 114 MA's), (Start: 11 @121870 has 71 MA's), (17, 121909), (20, 121930), (26, 122005), (28, 122017), (32, 122047), (71, 122329), (75, 122359), (77, 122392), (85, 122455), (94, 122533), (98, 122566), (105, 122596), (123, 122731), (128, 122767), (142, 122881),

Gene: Roots515_222 Start: 124977, Stop: 126002, Start Num: 9

Candidate Starts for Roots515_222:

(Start: 9 @124977 has 114 MA's), (Start: 11 @124986 has 71 MA's), (17, 125025), (20, 125046), (26, 125121), (28, 125133), (32, 125163), (71, 125445), (75, 125475), (77, 125508), (85, 125571), (94, 125649), (98, 125682), (105, 125712), (123, 125847), (128, 125883), (142, 125997),

Gene: SCentae_161 Start: 115056, Stop: 116048, Start Num: 14

Candidate Starts for SCentae_161:

(13, 115053), (Start: 14 @115056 has 4 MA's), (22, 115125), (23, 115140), (25, 115158), (26, 115188), (31, 115227), (59, 115455), (70, 115500), (77, 115575), (81, 115611), (88, 115689), (94, 115716), (98, 115746), (99, 115749), (104, 115773), (106, 115782), (131, 115956), (134, 115968), (138, 115983), (142, 116040),

Gene: SVoro_216 Start: 123780, Stop: 124796, Start Num: 11

Candidate Starts for SVoro_216:

(Start: 9 @123771 has 114 MA's), (Start: 11 @123780 has 71 MA's), (17, 123819), (20, 123840), (26, 123915), (28, 123927), (32, 123957), (71, 124239), (75, 124269), (77, 124302), (85, 124365), (94,

124443), (98, 124476), (105, 124506), (123, 124641), (128, 124677), (142, 124791),

Gene: Salacia_220 Start: 123582, Stop: 124598, Start Num: 11

Candidate Starts for Salacia_220:

(Start: 9 @123573 has 114 MA's), (Start: 11 @123582 has 71 MA's), (17, 123621), (20, 123642), (26, 123717), (28, 123729), (32, 123759), (71, 124041), (75, 124071), (77, 124104), (85, 124167), (94, 124245), (98, 124278), (105, 124308), (123, 124443), (128, 124479), (142, 124593),

Gene: Sauce_216 Start: 122384, Stop: 123409, Start Num: 9

Candidate Starts for Sauce_216:

(Start: 9 @122384 has 114 MA's), (Start: 11 @122393 has 71 MA's), (17, 122432), (20, 122453), (26, 122528), (28, 122540), (32, 122570), (71, 122852), (75, 122882), (77, 122915), (85, 122978), (94, 123056), (98, 123089), (105, 123119), (123, 123254), (128, 123290), (142, 123404),

Gene: ScoobyDoobyDoo_204 Start: 117614, Stop: 118645, Start Num: 11

Candidate Starts for ScoobyDoobyDoo_204:

(Start: 11 @117614 has 71 MA's), (21, 117677), (24, 117716), (26, 117749), (29, 117770), (37, 117887), (38, 117890), (45, 117932), (49, 117968), (57, 118028), (67, 118076), (69, 118082), (92, 118310), (121, 118475), (122, 118481), (125, 118505), (133, 118562), (135, 118571), (140, 118619),

Gene: ScottMcG_214 Start: 122475, Stop: 123491, Start Num: 11

Candidate Starts for ScottMcG_214:

(Start: 9 @122466 has 114 MA's), (Start: 11 @122475 has 71 MA's), (17, 122514), (20, 122535), (26, 122610), (28, 122622), (32, 122652), (71, 122934), (75, 122964), (77, 122997), (85, 123060), (94, 123138), (98, 123171), (105, 123201), (123, 123336), (128, 123372), (142, 123486),

Gene: Sebata_221 Start: 123900, Stop: 124922, Start Num: 11

Candidate Starts for Sebata_221:

(Start: 9 @123891 has 114 MA's), (Start: 11 @123900 has 71 MA's), (17, 123939), (20, 123960), (26, 124035), (28, 124047), (32, 124077), (71, 124359), (75, 124389), (77, 124422), (85, 124485), (94, 124563), (98, 124596), (105, 124626), (123, 124761), (128, 124797), (136, 124845), (142, 124917),

Gene: Settecandela_133 Start: 95976, Stop: 97007, Start Num: 11

Candidate Starts for Settecandela_133:

(Start: 11 @95976 has 71 MA's), (21, 96036), (23, 96060), (26, 96108), (32, 96150), (45, 96288), (55, 96354), (60, 96390), (67, 96426), (68, 96429), (73, 96471), (86, 96594), (98, 96693), (101, 96711), (103, 96717), (108, 96750), (111, 96786), (118, 96822), (132, 96915), (142, 96996),

Gene: Shaqnato_211 Start: 122601, Stop: 123623, Start Num: 11

Candidate Starts for Shaqnato_211:

(Start: 9 @122592 has 114 MA's), (Start: 11 @122601 has 71 MA's), (17, 122640), (20, 122661), (26, 122736), (28, 122748), (32, 122778), (71, 123060), (75, 123090), (77, 123123), (85, 123186), (94, 123264), (98, 123297), (105, 123327), (123, 123462), (128, 123498), (136, 123546), (142, 123618),

Gene: Shelob_221 Start: 125332, Stop: 126357, Start Num: 9

Candidate Starts for Shelob_221:

(Start: 9 @125332 has 114 MA's), (Start: 11 @125341 has 71 MA's), (17, 125380), (20, 125401), (26, 125476), (28, 125488), (32, 125518), (71, 125800), (75, 125830), (77, 125863), (85, 125926), (94, 126004), (98, 126037), (105, 126067), (123, 126202), (128, 126238), (142, 126352),

Gene: ShiaLabeouf_217 Start: 122378, Stop: 123403, Start Num: 9

Candidate Starts for ShiaLabeouf_217:

(Start: 9 @122378 has 114 MA's), (Start: 11 @122387 has 71 MA's), (17, 122426), (20, 122447), (26, 122522), (28, 122534), (32, 122564), (71, 122846), (75, 122876), (77, 122909), (85, 122972), (94, 123050), (98, 123083), (105, 123113), (123, 123248), (128, 123284), (142, 123398),

Gene: Shifa_197 Start: 121950, Stop: 122981, Start Num: 9

Candidate Starts for Shifa_197:

(Start: 9 @121950 has 114 MA's), (Start: 11 @121959 has 71 MA's), (17, 121998), (20, 122019), (26, 122094), (28, 122106), (32, 122136), (71, 122418), (75, 122448), (77, 122481), (85, 122544), (94, 122622), (98, 122655), (105, 122685), (123, 122820), (128, 122856), (136, 122904), (142, 122976),

Gene: Shnickers_218 Start: 122442, Stop: 123467, Start Num: 9

Candidate Starts for Shnickers_218:

(Start: 9 @122442 has 114 MA's), (Start: 11 @122451 has 71 MA's), (17, 122490), (20, 122511), (26, 122586), (28, 122598), (32, 122628), (71, 122910), (75, 122940), (77, 122973), (85, 123036), (94, 123114), (98, 123147), (105, 123177), (123, 123312), (128, 123348), (142, 123462),

Gene: Shrimp_222 Start: 124499, Stop: 125524, Start Num: 9

Candidate Starts for Shrimp_222:

(Start: 9 @124499 has 114 MA's), (Start: 11 @124508 has 71 MA's), (17, 124547), (20, 124568), (26, 124643), (28, 124655), (32, 124685), (71, 124967), (75, 124997), (77, 125030), (85, 125093), (94, 125171), (98, 125204), (105, 125234), (123, 125369), (128, 125405), (142, 125519),

Gene: SilverDipper_224 Start: 124000, Stop: 125016, Start Num: 11

Candidate Starts for SilverDipper_224:

(Start: 9 @123991 has 114 MA's), (Start: 11 @124000 has 71 MA's), (17, 124039), (20, 124060), (26, 124135), (28, 124147), (32, 124177), (71, 124459), (75, 124489), (77, 124522), (85, 124585), (94, 124663), (98, 124696), (105, 124726), (123, 124861), (128, 124897), (142, 125011),

Gene: Skog_222 Start: 144522, Stop: 145520, Start Num: 14

Candidate Starts for Skog_222:

(2, 143898), (5, 144378), (Start: 14 @144522 has 4 MA's), (22, 144591), (23, 144609), (26, 144657), (36, 144774), (37, 144792), (39, 144807), (44, 144831), (48, 144849), (56, 144909), (70, 144969), (76, 145026), (81, 145083), (98, 145218), (104, 145245), (113, 145308), (114, 145311), (120, 145341), (129, 145419), (138, 145455), (142, 145512),

Gene: SmallFry_220 Start: 122536, Stop: 123561, Start Num: 9

Candidate Starts for SmallFry_220:

(Start: 9 @122536 has 114 MA's), (Start: 11 @122545 has 71 MA's), (17, 122584), (20, 122605), (26, 122680), (28, 122692), (32, 122722), (71, 123004), (75, 123034), (77, 123067), (85, 123130), (94, 123208), (98, 123241), (105, 123271), (123, 123406), (128, 123442), (142, 123556),

Gene: SoilZilla_215 Start: 123079, Stop: 124104, Start Num: 9

Candidate Starts for SoilZilla_215:

(Start: 9 @123079 has 114 MA's), (Start: 11 @123088 has 71 MA's), (17, 123127), (20, 123148), (26, 123223), (28, 123235), (32, 123265), (71, 123547), (75, 123577), (77, 123610), (85, 123673), (94, 123751), (98, 123784), (105, 123814), (123, 123949), (128, 123985), (142, 124099),

Gene: Spec_215 Start: 122724, Stop: 123740, Start Num: 11

Candidate Starts for Spec_215:

(Start: 9 @122715 has 114 MA's), (Start: 11 @122724 has 71 MA's), (17, 122763), (20, 122784), (26, 122859), (28, 122871), (32, 122901), (71, 123183), (75, 123213), (77, 123246), (85, 123309), (94, 123387), (98, 123420), (105, 123450), (123, 123585), (128, 123621), (142, 123735),

Gene: Specks_224 Start: 123840, Stop: 124865, Start Num: 9

Candidate Starts for Specks_224:

(Start: 9 @123840 has 114 MA's), (Start: 11 @123849 has 71 MA's), (17, 123888), (20, 123909), (26, 123984), (28, 123996), (32, 124026), (71, 124308), (75, 124338), (77, 124371), (85, 124434), (94, 124512), (98, 124545), (105, 124575), (123, 124710), (128, 124746), (142, 124860),

Gene: Sprinklers_218 Start: 123091, Stop: 124113, Start Num: 11

Candidate Starts for Sprinklers_218:

(Start: 9 @123082 has 114 MA's), (Start: 11 @123091 has 71 MA's), (17, 123130), (20, 123151), (26, 123226), (28, 123238), (32, 123268), (71, 123550), (75, 123580), (77, 123613), (85, 123676), (94, 123754), (98, 123787), (105, 123817), (123, 123952), (128, 123988), (136, 124036), (142, 124108),

Gene: Spud_214 Start: 122806, Stop: 123831, Start Num: 9

Candidate Starts for Spud_214:

(Start: 9 @122806 has 114 MA's), (Start: 11 @122815 has 71 MA's), (17, 122854), (20, 122875), (26, 122950), (28, 122962), (32, 122992), (71, 123274), (75, 123304), (77, 123337), (85, 123400), (94, 123478), (98, 123511), (105, 123541), (123, 123676), (128, 123712), (142, 123826),

Gene: SrishMeg2525_217 Start: 123958, Stop: 124983, Start Num: 9

Candidate Starts for SrishMeg2525_217:

(Start: 9 @123958 has 114 MA's), (Start: 11 @123967 has 71 MA's), (17, 124006), (20, 124027), (26, 124102), (28, 124114), (32, 124144), (71, 124426), (75, 124456), (77, 124489), (85, 124552), (94, 124630), (98, 124663), (105, 124693), (123, 124828), (128, 124864), (142, 124978),

Gene: StephanieG_216 Start: 123992, Stop: 125017, Start Num: 9

Candidate Starts for StephanieG_216:

(Start: 9 @123992 has 114 MA's), (Start: 11 @124001 has 71 MA's), (17, 124040), (20, 124061), (26, 124136), (28, 124148), (32, 124178), (71, 124460), (75, 124490), (77, 124523), (85, 124586), (94, 124664), (98, 124697), (105, 124727), (123, 124862), (128, 124898), (142, 125012),

Gene: Stormageddon_84 Start: 79247, Stop: 80332, Start Num: 12

Candidate Starts for Stormageddon_84:

(Start: 11 @79244 has 71 MA's), (Start: 12 @79247 has 2 MA's), (17, 79283), (20, 79304), (35, 79499), (46, 79589), (49, 79616), (51, 79619), (52, 79640), (53, 79652), (61, 79694), (63, 79703), (65, 79715), (74, 79772), (78, 79817), (81, 79853), (82, 79859), (95, 79976), (97, 79988), (100, 79997), (102, 80006), (108, 80039), (109, 80048), (115, 80093), (124, 80165), (126, 80174), (127, 80192),

Gene: Stubby_204 Start: 121850, Stop: 122872, Start Num: 11

Candidate Starts for Stubby_204:

(Start: 9 @121841 has 114 MA's), (Start: 11 @121850 has 71 MA's), (17, 121889), (20, 121910), (26, 121985), (28, 121997), (32, 122027), (71, 122309), (75, 122339), (77, 122372), (85, 122435), (94, 122513), (98, 122546), (105, 122576), (123, 122711), (128, 122747), (136, 122795), (142, 122867),

Gene: StubbySaigey_225 Start: 123525, Stop: 124550, Start Num: 9

Candidate Starts for StubbySaigey_225:

(Start: 9 @123525 has 114 MA's), (Start: 11 @123534 has 71 MA's), (17, 123573), (20, 123594), (26, 123669), (28, 123681), (32, 123711), (71, 123993), (75, 124023), (77, 124056), (85, 124119), (94, 124197), (98, 124230), (105, 124260), (123, 124395), (128, 124431), (142, 124545),

Gene: Substance289_217 Start: 122584, Stop: 123609, Start Num: 9

Candidate Starts for Substance289_217:

(Start: 9 @122584 has 114 MA's), (Start: 11 @122593 has 71 MA's), (17, 122632), (20, 122653), (26, 122728), (28, 122740), (32, 122770), (71, 123052), (75, 123082), (77, 123115), (85, 123178), (94,

123256), (98, 123289), (105, 123319), (123, 123454), (128, 123490), (142, 123604),

Gene: Tainan_221 Start: 122868, Stop: 123884, Start Num: 11

Candidate Starts for Tainan_221:

(Start: 9 @122859 has 114 MA's), (Start: 11 @122868 has 71 MA's), (17, 122907), (20, 122928), (26, 123003), (28, 123015), (32, 123045), (71, 123327), (75, 123357), (77, 123390), (85, 123453), (94, 123531), (98, 123564), (105, 123594), (123, 123729), (128, 123765), (142, 123879),

Gene: Teardrop_217 Start: 122038, Stop: 123063, Start Num: 9

Candidate Starts for Teardrop_217:

(Start: 9 @122038 has 114 MA's), (Start: 11 @122047 has 71 MA's), (17, 122086), (20, 122107), (26, 122182), (28, 122194), (32, 122224), (71, 122506), (75, 122536), (77, 122569), (85, 122632), (94, 122710), (98, 122743), (105, 122773), (123, 122908), (128, 122944), (142, 123058),

Gene: TinyTim_218 Start: 122819, Stop: 123844, Start Num: 9

Candidate Starts for TinyTim_218:

(Start: 9 @122819 has 114 MA's), (Start: 11 @122828 has 71 MA's), (17, 122867), (20, 122888), (26, 122963), (28, 122975), (32, 123005), (71, 123287), (75, 123317), (77, 123350), (85, 123413), (94, 123491), (98, 123524), (105, 123554), (123, 123689), (128, 123725), (142, 123839),

Gene: Tonenili_242 Start: 128649, Stop: 129665, Start Num: 11

Candidate Starts for Tonenili_242:

(Start: 9 @128640 has 114 MA's), (Start: 11 @128649 has 71 MA's), (20, 128709), (28, 128796), (32, 128826), (64, 129066), (71, 129108), (75, 129138), (77, 129171), (85, 129234), (98, 129345), (105, 129375), (123, 129510), (128, 129546), (142, 129660),

Gene: Tortoise16_218 Start: 123281, Stop: 124306, Start Num: 9

Candidate Starts for Tortoise16_218:

(Start: 9 @123281 has 114 MA's), (Start: 11 @123290 has 71 MA's), (17, 123329), (20, 123350), (26, 123425), (28, 123437), (32, 123467), (71, 123749), (75, 123779), (77, 123812), (85, 123875), (94, 123953), (98, 123986), (105, 124016), (123, 124151), (128, 124187), (142, 124301),

Gene: Trinitium_216 Start: 121573, Stop: 122598, Start Num: 9

Candidate Starts for Trinitium_216:

(Start: 9 @121573 has 114 MA's), (Start: 11 @121582 has 71 MA's), (17, 121621), (20, 121642), (26, 121717), (28, 121729), (32, 121759), (71, 122041), (75, 122071), (77, 122104), (85, 122167), (94, 122245), (98, 122278), (105, 122308), (123, 122443), (128, 122479), (142, 122593),

Gene: Turret_213 Start: 121155, Stop: 122180, Start Num: 9

Candidate Starts for Turret_213:

(Start: 9 @121155 has 114 MA's), (Start: 11 @121164 has 71 MA's), (17, 121203), (20, 121224), (26, 121299), (28, 121311), (32, 121341), (71, 121623), (75, 121653), (77, 121686), (85, 121749), (94, 121827), (98, 121860), (105, 121890), (123, 122025), (128, 122061), (142, 122175),

Gene: Tyke_218 Start: 124648, Stop: 125673, Start Num: 9

Candidate Starts for Tyke_218:

(Start: 9 @124648 has 114 MA's), (Start: 11 @124657 has 71 MA's), (17, 124696), (20, 124717), (26, 124792), (28, 124804), (32, 124834), (71, 125116), (75, 125146), (77, 125179), (85, 125242), (94, 125320), (98, 125353), (105, 125383), (123, 125518), (128, 125554), (142, 125668),

Gene: ValleyTerrace_221 Start: 122732, Stop: 123757, Start Num: 9

Candidate Starts for ValleyTerrace_221:

(Start: 9 @122732 has 114 MA's), (Start: 11 @122741 has 71 MA's), (17, 122780), (20, 122801), (26, 122876), (28, 122888), (32, 122918), (71, 123200), (75, 123230), (77, 123263), (85, 123326), (94, 123404), (98, 123437), (105, 123467), (123, 123602), (128, 123638), (142, 123752),

Gene: Vortrix_240 Start: 127436, Stop: 128452, Start Num: 11

Candidate Starts for Vortrix_240:

(Start: 9 @127427 has 114 MA's), (Start: 11 @127436 has 71 MA's), (20, 127496), (28, 127583), (32, 127613), (64, 127853), (71, 127895), (75, 127925), (77, 127958), (85, 128021), (94, 128099), (98, 128132), (105, 128162), (123, 128297), (128, 128333), (142, 128447),

Gene: Wally_218 Start: 122716, Stop: 123741, Start Num: 9

Candidate Starts for Wally_218:

(Start: 9 @122716 has 114 MA's), (Start: 11 @122725 has 71 MA's), (17, 122764), (20, 122785), (26, 122860), (28, 122872), (32, 122902), (71, 123184), (75, 123214), (77, 123247), (85, 123310), (94, 123388), (98, 123421), (105, 123451), (123, 123586), (128, 123622), (142, 123736),

Gene: Willis_221 Start: 123627, Stop: 124643, Start Num: 11

Candidate Starts for Willis_221:

(Start: 9 @123618 has 114 MA's), (Start: 11 @123627 has 71 MA's), (17, 123666), (20, 123687), (26, 123762), (28, 123774), (32, 123804), (71, 124086), (75, 124116), (77, 124149), (85, 124212), (94, 124290), (98, 124323), (105, 124353), (123, 124488), (128, 124524), (142, 124638),

Gene: Yassified_217 Start: 123068, Stop: 124093, Start Num: 9

Candidate Starts for Yassified_217:

(Start: 9 @123068 has 114 MA's), (Start: 11 @123077 has 71 MA's), (17, 123116), (20, 123137), (26, 123212), (28, 123224), (32, 123254), (71, 123536), (75, 123566), (77, 123599), (85, 123662), (94, 123740), (98, 123773), (105, 123803), (123, 123938), (128, 123974), (142, 124088),

Gene: YemiJoy2021_221 Start: 124386, Stop: 125411, Start Num: 9

Candidate Starts for YemiJoy2021_221:

(Start: 9 @124386 has 114 MA's), (Start: 11 @124395 has 71 MA's), (17, 124434), (20, 124455), (26, 124530), (28, 124542), (32, 124572), (71, 124854), (75, 124884), (77, 124917), (85, 124980), (94, 125058), (98, 125091), (105, 125121), (123, 125256), (128, 125292), (142, 125406),

Gene: YoungMoneyMata_219 Start: 123209, Stop: 124225, Start Num: 11

Candidate Starts for YoungMoneyMata_219:

(Start: 9 @123200 has 114 MA's), (Start: 11 @123209 has 71 MA's), (17, 123248), (20, 123269), (26, 123344), (28, 123356), (32, 123386), (71, 123668), (75, 123698), (77, 123731), (85, 123794), (94, 123872), (98, 123905), (105, 123935), (123, 124070), (128, 124106), (142, 124220),

Gene: Yucca_220 Start: 124378, Stop: 125403, Start Num: 9

Candidate Starts for Yucca_220:

(Start: 9 @124378 has 114 MA's), (Start: 11 @124387 has 71 MA's), (17, 124426), (20, 124447), (26, 124522), (28, 124534), (32, 124564), (71, 124846), (75, 124876), (77, 124909), (85, 124972), (94, 125050), (98, 125083), (105, 125113), (123, 125248), (128, 125284), (142, 125398),

Gene: Zalkecks_219 Start: 123447, Stop: 124472, Start Num: 9

Candidate Starts for Zalkecks_219:

(Start: 9 @123447 has 114 MA's), (Start: 11 @123456 has 71 MA's), (17, 123495), (20, 123516), (26, 123591), (28, 123603), (32, 123633), (71, 123915), (75, 123945), (77, 123978), (85, 124041), (94, 124119), (98, 124152), (105, 124182), (123, 124317), (128, 124353), (142, 124467),

Gene: Zeenon_222 Start: 124018, Stop: 125043, Start Num: 9

Candidate Starts for Zeenon_222:

(Start: 9 @124018 has 114 MA's), (Start: 11 @124027 has 71 MA's), (17, 124066), (20, 124087), (26, 124162), (28, 124174), (32, 124204), (71, 124486), (75, 124516), (77, 124549), (85, 124612), (94, 124690), (98, 124723), (105, 124753), (123, 124888), (128, 124924), (142, 125038),

Gene: ZygoTaiga_217 Start: 124638, Stop: 125663, Start Num: 9

Candidate Starts for ZygoTaiga_217:

(Start: 9 @124638 has 114 MA's), (Start: 11 @124647 has 71 MA's), (17, 124686), (20, 124707), (26, 124782), (28, 124794), (32, 124824), (71, 125106), (75, 125136), (77, 125169), (85, 125232), (94, 125310), (98, 125343), (105, 125373), (123, 125508), (128, 125544), (142, 125658),