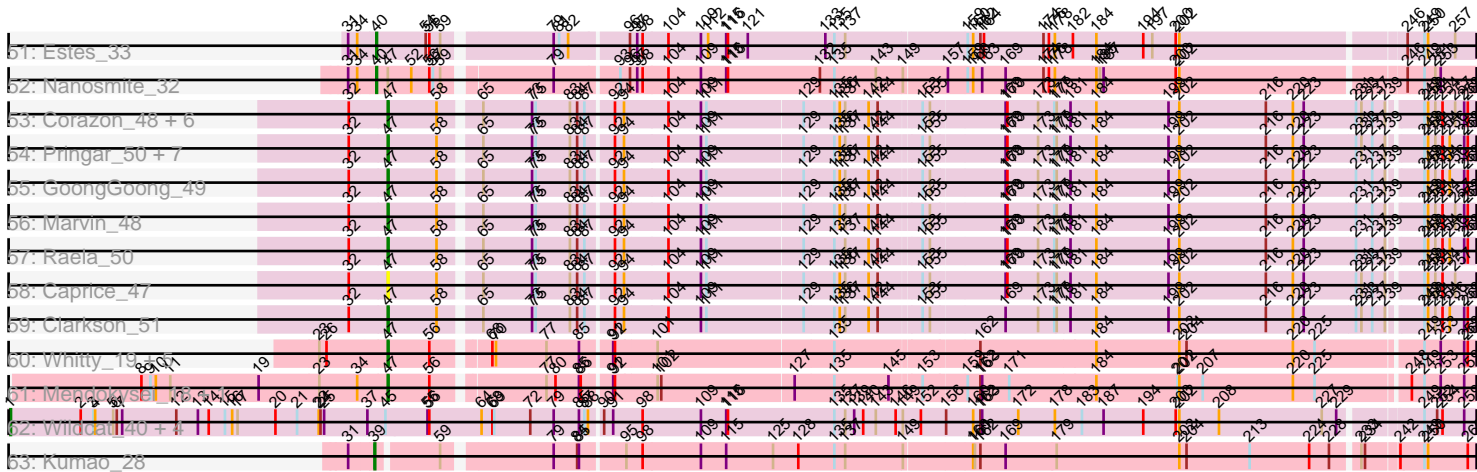


Pham 303137



Note: Tracks are now grouped by subcluster and scaled. Switching in subcluster is indicated by changes in track color. Track scale is now set by default to display the region 30 bp upstream of start 1 to 30 bp downstream of the last possible start. If this default region is judged to be packed too tightly with annotated starts, the track will be further scaled to only show that region of the ORF with annotated starts. This action will be indicated by adding "Zoomed" to the title. For starts, yellow indicates the location of called starts comprised solely of Glimmer/GeneMark auto-annotations, green indicates the location of called starts with at least 1 manual gene annotation.

Pham 303137 Report

This analysis was run 06/08/26 on database version 649.

Pham number 303137 has 168 members, 28 are drafts.

Phages represented in each track:

- Track 1 : Farewell_16, Sparky_16
- Track 2 : Sephiroth_28, Syleon_28
- Track 3 : Kudrefre_27
- Track 4 : Octobien14_28
- Track 5 : Rabbitrun_30
- Track 6 : Neville_28
- Track 7 : LilJank_28, Trax_28
- Track 8 : Wyatt2_18, Silverleaf_18, AvadaKedavra_18, Acquire49_18, Rose5_18, Tyson_18, UPIE_18, Halena_18, MACKerman_18
- Track 9 : Appletree2_18
- Track 10 : JoeDirt_18, Enceladus_18, DirkDirk_18, OhShagHennessy_18
- Track 11 : LeBron_18, CicholasNage_18, Calm_18, Wamburggrxpress_18, Zaria_18
- Track 12 : Poochiewood_18
- Track 13 : Loadrie_18, Underpass_18, OverPar_18, BobsGarage_18, BigCheese_18, Faith1_18, MkaliMitinis3_18, Miley16_18, DrSeegs_18, Wigglewiggles_18, Kahlid_18, Hafay_18, Gabriela_18, Sarshaun_18, Nicholasp3_18, Soap141_18, SoJulia_18, Winky_18, Itos_18, Breezona_18, Finemlucis_18, Gardann_18, Lynnae_18, Wilder_18, Netyap_18
- Track 14 : Bazzle_18
- Track 15 : DanBing_17, DHan_18
- Track 16 : LilDestine_18, Zakai_18, Crossroads_18, Vetric_18, Rumpelstiltskin_18
- Track 17 : Archie_18
- Track 18 : Lewan_18
- Track 19 : GuuelaD_18
- Track 20 : Tourach_18
- Track 21 : Baoshan_17, ZhongYanYuan_17
- Track 22 : Rossetti_18
- Track 23 : Claus_18
- Track 24 : Jubie_19, Kingsolomon_19, TriFive_19, Snenia_19, Jobypre_19, MsGreen_19, Nicholas_19, Red305_19, Lumos_19, Clautastrophe_19
- Track 25 : Ellson_19
- Track 26 : Krypton555_19
- Track 27 : KirDoubleO7_17
- Track 28 : BourbonZero_18, LiyuLake_19
- Track 29 : Finnry_19, Moostard_19, Bellis_19, Samty_19
- Track 30 : DuncansLeg_19
- Track 31 : MiniMac_19, Lolly9_19, MiniLon_19

- Track 32 : Whirlwind_20
- Track 33 : BrainDrainer_19, Douzhi_18, Sheng711_18, PYPDinur_18
- Track 34 : Douge_18, FarmResident_18, Quby_18
- Track 35 : Chaser_18
- Track 36 : ChutneyChips_18
- Track 37 : Kropertea_18
- Track 38 : DyoEdafos_19
- Track 39 : Bromden_19
- Track 40 : Baudelaire_18, Aegeus_18
- Track 41 : Auspice_28
- Track 42 : Reindeer_26
- Track 43 : TyDawg_28, IPhane7_28, LilhomieP_27, Dulcita_29, Izel_29, Glaske16_29, FreakyGoo_29, Bongo_28, Skinny_29, SlimJimmy_27, PegLeg_28, Diminimus_29
- Track 44 : RoseMarie_29
- Track 45 : KleverKiS_28, TpudiCK_29
- Track 46 : Bricole_28
- Track 47 : Rey_32
- Track 48 : GenevaB15_32
- Track 49 : Aziz_32
- Track 50 : MrMagoo_32, GardenSalsa_32
- Track 51 : Estes_33
- Track 52 : Nanosmite_32
- Track 53 : Corazon_48, JoieB_51, FeliMaine_52, Gattaca_49, MosMoris_48, Tesla_49, RedRaider77_50
- Track 54 : Pringar_50, Blackbeetle_50, Huphlepuuff_52, VasuNzinga_50, Beelzebub_54, Poise_50, LittleLaf_50, Lilbit_49
- Track 55 : GoongGoong_49
- Track 56 : Marvin_48
- Track 57 : Raela_50
- Track 58 : Caprice_47
- Track 59 : Clarkson_51
- Track 60 : Whitty_19, RonRayGun_19, Bernal13_19, Nairb_19, ZenTime222_19, Ibrahim_19
- Track 61 : Mendokysei_18, Nette_19
- Track 62 : Wildcat_40, Azrael100_39, MaryV_40, Cosmo_40, EniyanLRS_37
- Track 63 : Kumao_28

Summary of Final Annotations (See graph section above for start numbers):

The start number called the most often in the published annotations is 35, it was called in 43 of the 140 non-draft genes in the pham.

Genes that call this "Most Annotated" start:

- Acquire49_18, AvadaKedavra_18, Bellis_19, BourbonZero_18, BrainDrainer_19, Bromden_19, Calm_18, Chaser_18, ChutneyChips_18, CicholasNage_18, Clautastrophe_19, DirkDirk_18, Douge_18, Douzhi_18, DuncansLeg_19, DyoEdafos_19, Ellson_19, Enceladus_18, FarmResident_18, Finnry_19, Halena_18, Jobypre_19, JoeDirt_18, Jubie_19, Kingsolomon_19, KirDoubleO7_17, Kropertea_18, Krypton555_19, LeBron_18, LiyuLake_19, Lolly9_19, Lumos_19,

MAckerman_18, MiniLon_19, MiniMac_19, Moostard_19, MsGreen_19, Nicholas_19, OhShagHennessy_18, PYPDinur_18, Quby_18, Red305_19, Rose5_18, Samty_19, Sheng711_18, Silverleaf_18, Snenia_19, TriFive_19, Tyson_18, UPIE_18, Wamburgxpress_18, Whirlwind_20, Wyatt2_18, Zaria_18,

Genes that have the "Most Annotated" start but do not call it:

- Appletree2_18, Poochiewood_18,

Genes that do not have the "Most Annotated" start:

- Aegeus_18, Archie_18, Auspice_28, Aziz_32, Azrael100_39, Baoshan_17, Baudelaire_18, Bazzle_18, Beelzebub_54, Bernal13_19, BigCheese_18, Blackbeetle_50, BobsGarage_18, Bongo_28, Breezona_18, Bricole_28, Caprice_47, Clarkson_51, Claus_18, Corazon_48, Cosmo_40, Crossroads_18, DHan_18, DanBing_17, Diminimus_29, DrSeegs_18, Dulcita_29, EniyanLRS_37, Estes_33, Faith1_18, Farewell_16, FeliMaine_52, Finemlucis_18, FreakyGoo_29, Gabriela_18, Gardann_18, GardenSalsa_32, Gattaca_49, GenevaB15_32, Glaske16_29, GoongGoong_49, GuuelaD_18, Hafay_18, Huphlepuuff_52, IPhone7_28, Ibrahim_19, Itos_18, Izel_29, JoieB_51, Kahlid_18, KleverKiS_28, Kudrefre_27, Kumao_28, Lewan_18, LilDestine_18, LilJank_28, Lilbit_49, LilhomieP_27, LittleLaf_50, Loadrie_18, Lynnae_18, Marvin_48, MaryV_40, Mendokysei_18, Miley16_18, MkaliMitinis3_18, MosMoris_48, MrMagoo_32, Nairb_19, Nanosmite_32, Nette_19, Netyap_18, Neville_28, Nicholasp3_18, Octobien14_28, OverPar_18, PegLeg_28, Poise_50, Pringar_50, Rabbitrun_30, Raela_50, RedRaider77_50, Reindeer_26, Rey_32, RonRayGun_19, RoseMarie_29, Rossetti_18, Rumpelstiltskin_18, Sarshaun_18, Sephiroth_28, Skinny_29, SlimJimmy_27, SoJulia_18, Soap141_18, Sparky_16, Syleon_28, Tesla_49, Tourach_18, TpudiCK_29, Trax_28, TyDawg_28, Underpass_18, VasuNzinga_50, Vetrix_18, Whitty_19, Wigglewiggle_18, Wildcat_40, Wilder_18, Winky_18, Zakai_18, ZenTime222_19, ZhongYanYuan_17,

Summary by start number:

Start 1:

- Found in 5 of 168 (3.0%) of genes in pham
- Manual Annotations of this start: 5 of 140
- Called 100.0% of time when present
- Phage (with cluster) where this start called: Azrael100_39 (V), Cosmo_40 (V), EniyanLRS_37 (V), MaryV_40 (V), Wildcat_40 (V),

Start 24:

- Found in 25 of 168 (14.9%) of genes in pham
- Manual Annotations of this start: 1 of 140
- Called 4.0% of time when present
- Phage (with cluster) where this start called: Appletree2_18 (L1),

Start 28:

- Found in 22 of 168 (13.1%) of genes in pham
- No Manual Annotations of this start.
- Called 4.5% of time when present
- Phage (with cluster) where this start called: Poochiewood_18 (L1),

Start 31:

- Found in 24 of 168 (14.3%) of genes in pham
- Manual Annotations of this start: 3 of 140

- Called 20.8% of time when present
- Phage (with cluster) where this start called: GardenSalsa_32 (M2), GenevaB15_32 (M2), KleverKiS_28 (M1), MrMagoo_32 (M2), TpudiCK_29 (M1),

Start 33:

- Found in 1 of 168 (0.6%) of genes in pham
- No Manual Annotations of this start.
- Called 100.0% of time when present
- Phage (with cluster) where this start called: RoseMarie_29 (M1),

Start 34:

- Found in 26 of 168 (15.5%) of genes in pham
- Manual Annotations of this start: 2 of 140
- Called 7.7% of time when present
- Phage (with cluster) where this start called: Auspice_28 (M1), Rey_32 (M2),

Start 35:

- Found in 56 of 168 (33.3%) of genes in pham
- Manual Annotations of this start: 43 of 140
- Called 96.4% of time when present
- Phage (with cluster) where this start called: Acquire49_18 (L1), AvadaKedavra_18 (L1), Bellis_19 (L3), BourbonZero_18 (L3), BrainDrainer_19 (L4), Bromden_19 (L4), Calm_18 (L1), Chaser_18 (L4), ChutneyChips_18 (L4), CicholasNage_18 (L1), Clautastrophe_19 (L3), DirkDirk_18 (L1), Douge_18 (L4), Douzhi_18 (L4), DuncansLeg_19 (L3), DyoEdafos_19 (L4), Ellson_19 (L3), Enceladus_18 (L1), FarmResident_18 (L4), Finnry_19 (L3), Halena_18 (L1), Jobypre_19 (L3), JoeDirt_18 (L1), Jubie_19 (L3), Kingsolomon_19 (L3), KirDoubleO7_17 (L3), Kropertea_18 (L4), Krypton555_19 (L3), LeBron_18 (L1), LiyuLake_19 (L3), Lolly9_19 (L3), Lumos_19 (L3), MAckerman_18 (L1), MiniLon_19 (L3), MiniMac_19 (L3), Moostard_19 (L3), MsGreen_19 (L3), Nicholas_19 (L3), OhShagHennessy_18 (L1), PYPDinur_18 (L4), Quby_18 (L4), Red305_19 (L3), Rose5_18 (L1), Samty_19 (L3), Sheng711_18 (L4), Silverleaf_18 (L1), Snenia_19 (L3), TriFive_19 (L3), Tyson_18 (L1), UPIE_18 (L1), Wamburgxpress_18 (L1), Whirlwind_20 (L3), Wyatt2_18 (L1), Zaria_18 (L1),

Start 36:

- Found in 2 of 168 (1.2%) of genes in pham
- Manual Annotations of this start: 2 of 140
- Called 100.0% of time when present
- Phage (with cluster) where this start called: Aegeus_18 (L5), Baudelaire_18 (L5),

Start 39:

- Found in 1 of 168 (0.6%) of genes in pham
- Manual Annotations of this start: 1 of 140
- Called 100.0% of time when present
- Phage (with cluster) where this start called: Kumao_28 (singleton),

Start 40:

- Found in 23 of 168 (13.7%) of genes in pham
- Manual Annotations of this start: 16 of 140
- Called 69.6% of time when present
- Phage (with cluster) where this start called: Aziz_32 (M2), Bongo_28 (M1), Bricole_28 (M1), Diminimus_29 (M1), Dulcita_29 (M1), Estes_33 (M2), FreakyGoo_29 (M1), Glaske16_29 (M1), IPHane7_28 (M1), Izel_29 (M1),

LilhomieP_27 (M1), Nanosmite_32 (M3), PegLeg_28 (M1), Skinny_29 (M1), SlimJimmy_27 (M1), TyDawg_28 (M1),

Start 42:

- Found in 1 of 168 (0.6%) of genes in pham
- Manual Annotations of this start: 1 of 140
- Called 100.0% of time when present
- Phage (with cluster) where this start called: Reindeer_26 (M1),

Start 43:

- Found in 8 of 168 (4.8%) of genes in pham
- Manual Annotations of this start: 7 of 140
- Called 100.0% of time when present
- Phage (with cluster) where this start called: Kudrefre_27 (DU1), LilJank_28 (DU2), Neville_28 (DU2), Octobien14_28 (DU1), Rabbitrun_30 (DU2), Sephiroth_28 (DU1), Syleon_28 (DU1), Trax_28 (DU2),

Start 44:

- Found in 2 of 168 (1.2%) of genes in pham
- Manual Annotations of this start: 2 of 140
- Called 100.0% of time when present
- Phage (with cluster) where this start called: Farewell_16 (AF), Sparky_16 (AF),

Start 46:

- Found in 41 of 168 (24.4%) of genes in pham
- Manual Annotations of this start: 31 of 140
- Called 100.0% of time when present
- Phage (with cluster) where this start called: Archie_18 (L2), Baoshan_17 (L2), Bazzle_18 (L2), BigCheese_18 (L2), BobsGarage_18 (L2), Breezona_18 (L2), Claus_18 (L2), Crossroads_18 (L2), DHan_18 (L2), DanBing_17 (L2), DrSeegs_18 (L2), Faith1_18 (L2), Finemlucis_18 (L2), Gabriela_18 (L2), Gardann_18 (L2), GuuelaD_18 (L2), Hafay_18 (L2), Itos_18 (L2), Kahlid_18 (L2), Lewan_18 (L2), LilDestine_18 (L2), Loadrie_18 (L2), Lynnae_18 (L2), Miley16_18 (L2), MkaliMitinis3_18 (L2), Netyap_18 (L2), Nicholasp3_18 (L2), OverPar_18 (L2), Rossetti_18 (L2), Rumpelstiltskin_18 (L2), Sarshaun_18 (L2), SoJulia_18 (L2), Soap141_18 (L2), Tourach_18 (L2), Underpass_18 (L2), Vetrix_18 (L2), Wigglewiggles_18 (L2), Wilder_18 (L2), Winky_18 (L2), Zakai_18 (L2), ZhongYanYuan_17 (L2),

Start 47:

- Found in 46 of 168 (27.4%) of genes in pham
- Manual Annotations of this start: 26 of 140
- Called 60.9% of time when present
- Phage (with cluster) where this start called: Beelzebub_54 (S), Bernal13_19 (T), Blackbeetle_50 (S), Caprice_47 (S), Clarkson_51 (S), Corazon_48 (S), FeliMaine_52 (S), Gattaca_49 (S), GoongGoong_49 (S), Huphlepuuff_52 (S), Ibrahim_19 (T), JoieB_51 (S), Lilbit_49 (S), LittleLaf_50 (S), Marvin_48 (S), Mendokysei_18 (T), MosMoris_48 (S), Nairb_19 (T), Nette_19 (T), Poise_50 (S), Pringar_50 (S), Raela_50 (S), RedRaider77_50 (S), RonRayGun_19 (T), Tesla_49 (S), VasuNzinga_50 (S), Whitty_19 (T), ZenTime222_19 (T),

Summary by clusters:

There are 15 clusters represented in this pham: singleton, AF, V, S, DU1, L4, L5, L2, L3, M3, L1, M1, DU2, M2, T,

Info for manual annotations of cluster AF:

- Start number 44 was manually annotated 2 times for cluster AF.

Info for manual annotations of cluster DU1:

- Start number 43 was manually annotated 4 times for cluster DU1.

Info for manual annotations of cluster DU2:

- Start number 43 was manually annotated 3 times for cluster DU2.

Info for manual annotations of cluster L1:

- Start number 24 was manually annotated 1 time for cluster L1.
- Start number 35 was manually annotated 18 times for cluster L1.

Info for manual annotations of cluster L2:

- Start number 46 was manually annotated 31 times for cluster L2.

Info for manual annotations of cluster L3:

- Start number 35 was manually annotated 19 times for cluster L3.

Info for manual annotations of cluster L4:

- Start number 35 was manually annotated 6 times for cluster L4.

Info for manual annotations of cluster L5:

- Start number 36 was manually annotated 2 times for cluster L5.

Info for manual annotations of cluster M1:

- Start number 34 was manually annotated 1 time for cluster M1.
- Start number 40 was manually annotated 13 times for cluster M1.
- Start number 42 was manually annotated 1 time for cluster M1.

Info for manual annotations of cluster M2:

- Start number 31 was manually annotated 3 times for cluster M2.
- Start number 34 was manually annotated 1 time for cluster M2.
- Start number 40 was manually annotated 2 times for cluster M2.

Info for manual annotations of cluster M3:

- Start number 40 was manually annotated 1 time for cluster M3.

Info for manual annotations of cluster S:

- Start number 47 was manually annotated 19 times for cluster S.

Info for manual annotations of cluster T:

- Start number 47 was manually annotated 7 times for cluster T.

Info for manual annotations of cluster V:

- Start number 1 was manually annotated 5 times for cluster V.

Gene Information:

Gene: Acquire49_18 Start: 16746, Stop: 18515, Start Num: 35

Candidate Starts for Acquire49_18:

(Start: 24 @16683 has 1 MA's), (28, 16704), (30, 16719), (Start: 35 @16746 has 43 MA's), (53, 16839), (61, 16887), (62, 16893), (64, 16920), (65, 16923), (66, 16929), (72, 17001), (75, 17010), (78, 17034), (81, 17049), (84, 17079), (103, 17205), (104, 17214), (106, 17235), (108, 17250), (117, 17319), (123, 17355), (124, 17376), (131, 17445), (135, 17484), (153, 17622), (155, 17634), (162, 17709), (164, 17715), (166, 17733), (172, 17772), (173, 17805), (174, 17814), (176, 17823), (178, 17832), (179, 17835), (190, 17955), (196, 17991), (202, 18039), (204, 18051), (208, 18105), (217, 18201), (218, 18219), (219, 18225), (220, 18228), (225, 18261), (228, 18285), (237, 18348), (243, 18390), (249, 18429), (251, 18447), (255, 18468), (258, 18489),

Gene: Aegeus_18 Start: 16306, Stop: 18069, Start Num: 36

Candidate Starts for Aegeus_18:

(28, 16267), (30, 16282), (Start: 36 @16306 has 2 MA's), (41, 16327), (59, 16429), (62, 16444), (66, 16480), (73, 16555), (75, 16561), (77, 16579), (78, 16585), (79, 16591), (98, 16723), (103, 16756), (105, 16768), (107, 16789), (124, 16927), (131, 16996), (132, 17011), (134, 17023), (135, 17035), (136, 17044), (140, 17083), (141, 17089), (144, 17107), (146, 17137), (153, 17179), (162, 17266), (168, 17302), (172, 17329), (174, 17371), (178, 17389), (179, 17392), (180, 17395), (186, 17467), (187, 17470), (194, 17536), (196, 17548), (202, 17596), (208, 17662), (211, 17680), (214, 17722), (216, 17740), (220, 17785), (222, 17791), (233, 17887), (235, 17896), (237, 17905), (245, 17953), (247, 17956), (249, 17983), (251, 18001), (253, 18010), (255, 18022), (257, 18034), (258, 18043), (260, 18055),

Gene: Appletree2_18 Start: 16636, Stop: 18468, Start Num: 24

Candidate Starts for Appletree2_18:

(Start: 24 @16636 has 1 MA's), (28, 16657), (30, 16672), (Start: 35 @16699 has 43 MA's), (53, 16792), (61, 16840), (62, 16846), (64, 16873), (66, 16882), (72, 16954), (75, 16963), (78, 16987), (81, 17002), (84, 17032), (103, 17158), (104, 17167), (106, 17188), (108, 17203), (117, 17272), (123, 17308), (124, 17329), (131, 17398), (135, 17437), (153, 17575), (155, 17587), (162, 17662), (164, 17668), (166, 17686), (172, 17725), (173, 17758), (174, 17767), (176, 17776), (178, 17785), (190, 17908), (196, 17944), (202, 17992), (204, 18004), (208, 18058), (217, 18154), (218, 18172), (219, 18178), (220, 18181), (225, 18214), (228, 18238), (237, 18301), (243, 18343), (249, 18382), (251, 18400), (255, 18421), (258, 18442),

Gene: Archie_18 Start: 17205, Stop: 18938, Start Num: 46

Candidate Starts for Archie_18:

(Start: 46 @17205 has 31 MA's), (56, 17274), (72, 17415), (73, 17418), (81, 17463), (85, 17496), (87, 17505), (91, 17541), (99, 17595), (103, 17622), (105, 17634), (109, 17685), (110, 17691), (114, 17724), (132, 17877), (135, 17901), (136, 17910), (141, 17955), (147, 18006), (153, 18048), (167, 18168), (173, 18231), (178, 18258), (183, 18303), (187, 18339), (198, 18438), (200, 18459), (202, 18465), (204, 18477), (209, 18540), (217, 18627), (220, 18654), (229, 18723), (230, 18738), (237, 18774), (249, 18852), (251, 18870),

Gene: Auspice_28 Start: 22341, Stop: 24104, Start Num: 34

Candidate Starts for Auspice_28:

(18, 22146), (Start: 31 @22326 has 3 MA's), (Start: 34 @22341 has 2 MA's), (Start: 40 @22368 has 16 MA's), (Start: 47 @22383 has 26 MA's), (52, 22422), (56, 22452), (57, 22458), (59, 22470), (71, 22575), (72, 22590), (79, 22629), (97, 22752), (98, 22761), (109, 22857), (115, 22899), (116, 22902), (135, 23079), (149, 23190), (153, 23217), (159, 23289), (160, 23298), (161, 23301), (163, 23313), (178, 23433), (179, 23436), (183, 23478), (185, 23508), (187, 23514), (200, 23634), (202, 23640), (246, 23994), (249, 24021), (251, 24039), (253, 24048),

Gene: AvadaKedavra_18 Start: 16746, Stop: 18515, Start Num: 35

Candidate Starts for AvadaKedavra_18:

(Start: 24 @16683 has 1 MA's), (28, 16704), (30, 16719), (Start: 35 @16746 has 43 MA's), (53, 16839), (61, 16887), (62, 16893), (64, 16920), (65, 16923), (66, 16929), (72, 17001), (75, 17010), (78, 17034), (81, 17049), (84, 17079), (103, 17205), (104, 17214), (106, 17235), (108, 17250), (117, 17319), (123, 17355), (124, 17376), (131, 17445), (135, 17484), (153, 17622), (155, 17634), (162, 17709), (164, 17715), (166, 17733), (172, 17772), (173, 17805), (174, 17814), (176, 17823), (178, 17832), (179, 17835), (190, 17955), (196, 17991), (202, 18039), (204, 18051), (208, 18105), (217, 18201), (218, 18219), (219, 18225), (220, 18228), (225, 18261), (228, 18285), (237, 18348), (243, 18390), (249, 18429), (251, 18447), (255, 18468), (258, 18489),

Gene: Aziz_32 Start: 22957, Stop: 24696, Start Num: 40

Candidate Starts for Aziz_32:

(Start: 31 @22915 has 3 MA's), (Start: 34 @22930 has 2 MA's), (Start: 40 @22957 has 16 MA's), (54, 23035), (56, 23041), (59, 23059), (79, 23221), (81, 23230), (82, 23245), (96, 23332), (97, 23344), (98, 23353), (109, 23449), (112, 23461), (115, 23491), (116, 23494), (121, 23527), (133, 23656), (135, 23671), (137, 23689), (159, 23881), (160, 23890), (162, 23902), (164, 23908), (174, 24007), (176, 24016), (178, 24025), (184, 24094), (194, 24172), (197, 24187), (200, 24226), (202, 24232), (246, 24586), (249, 24613), (250, 24619),

Gene: Azrael100_39 Start: 25297, Stop: 27681, Start Num: 1

Candidate Starts for Azrael100_39:

(Start: 1 @25297 has 5 MA's), (2, 25414), (3, 25435), (4, 25438), (5, 25468), (6, 25474), (7, 25483), (12, 25573), (13, 25609), (14, 25627), (15, 25654), (16, 25666), (17, 25675), (20, 25738), (21, 25774), (22, 25810), (Start: 24 @25813 has 1 MA's), (25, 25819), (37, 25891), (45, 25921), (55, 25990), (56, 25993), (64, 26080), (68, 26098), (69, 26101), (72, 26161), (79, 26200), (85, 26242), (87, 26251), (88, 26257), (90, 26272), (91, 26287), (98, 26335), (109, 26431), (115, 26473), (116, 26476), (135, 26653), (137, 26671), (139, 26686), (140, 26701), (143, 26722), (146, 26755), (149, 26764), (152, 26794), (156, 26833), (160, 26875), (162, 26887), (163, 26890), (172, 26950), (178, 27010), (183, 27055), (187, 27091), (194, 27157), (200, 27211), (202, 27217), (208, 27283), (227, 27454), (229, 27478), (249, 27598), (252, 27619), (254, 27628), (259, 27664),

Gene: Baoshan_17 Start: 16814, Stop: 18547, Start Num: 46

Candidate Starts for Baoshan_17:

(Start: 46 @16814 has 31 MA's), (56, 16883), (72, 17024), (73, 17027), (78, 17057), (81, 17072), (85, 17105), (91, 17150), (99, 17204), (103, 17231), (105, 17243), (109, 17294), (110, 17300), (114, 17333), (132, 17486), (135, 17510), (136, 17519), (141, 17564), (147, 17615), (158, 17720), (167, 17777), (173, 17840), (183, 17912), (187, 17948), (198, 18047), (200, 18068), (202, 18074), (204, 18086), (209, 18149), (217, 18236), (220, 18263), (225, 18296), (230, 18347), (232, 18359), (237, 18383), (249, 18461), (251, 18479),

Gene: Baudelaire_18 Start: 16306, Stop: 18069, Start Num: 36

Candidate Starts for Baudelaire_18:

(28, 16267), (30, 16282), (Start: 36 @16306 has 2 MA's), (41, 16327), (59, 16429), (62, 16444), (66, 16480), (73, 16555), (75, 16561), (77, 16579), (78, 16585), (79, 16591), (98, 16723), (103, 16756), (105, 16768), (107, 16789), (124, 16927), (131, 16996), (132, 17011), (134, 17023), (135, 17035), (136, 17044), (140, 17083), (141, 17089), (144, 17107), (146, 17137), (153, 17179), (162, 17266), (168, 17302), (172, 17329), (174, 17371), (178, 17389), (179, 17392), (180, 17395), (186, 17467), (187, 17470), (194, 17536), (196, 17548), (202, 17596), (208, 17662), (211, 17680), (214, 17722), (216, 17740), (220, 17785), (222, 17791), (233, 17887), (235, 17896), (237, 17905), (245, 17953), (247, 17956), (249, 17983), (251, 18001), (253, 18010), (255, 18022), (257, 18034), (258, 18043), (260, 18055),

Gene: Bazzle_18 Start: 16954, Stop: 18687, Start Num: 46

Candidate Starts for Bazzle_18:

(Start: 46 @16954 has 31 MA's), (56, 17023), (72, 17164), (73, 17167), (81, 17212), (85, 17245), (91, 17290), (99, 17344), (103, 17371), (105, 17383), (109, 17434), (110, 17440), (114, 17473), (132, 17626), (135, 17650), (136, 17659), (139, 17683), (140, 17698), (141, 17704), (147, 17755), (153, 17797), (167, 17917), (173, 17980), (183, 18052), (187, 18088), (196, 18166), (198, 18187), (200, 18208), (202, 18214), (204, 18226), (209, 18289), (217, 18376), (220, 18403), (225, 18436), (229, 18472), (230, 18487), (237, 18523), (249, 18601), (251, 18619),

Gene: Beelzebub_54 Start: 27672, Stop: 29384, Start Num: 47

Candidate Starts for Beelzebub_54:

(32, 27609), (Start: 47 @27672 has 26 MA's), (58, 27753), (65, 27810), (73, 27891), (75, 27897), (83, 27954), (84, 27966), (87, 27978), (92, 28017), (94, 28032), (104, 28101), (109, 28155), (111, 28164), (129, 28320), (135, 28368), (136, 28377), (137, 28386), (142, 28425), (144, 28440), (153, 28503), (155, 28515), (169, 28632), (170, 28635), (173, 28686), (177, 28713), (179, 28716), (181, 28737), (184, 28779), (199, 28899), (202, 28917), (216, 29061), (220, 29106), (223, 29124), (231, 29208), (233, 29217), (237, 29235), (239, 29256), (249, 29301), (250, 29307), (251, 29319), (254, 29331), (256, 29343), (259, 29367), (260, 29373),

Gene: Bellis_19 Start: 17375, Stop: 19138, Start Num: 35

Candidate Starts for Bellis_19:

(Start: 35 @17375 has 43 MA's), (41, 17402), (53, 17465), (61, 17513), (62, 17519), (66, 17555), (73, 17630), (77, 17654), (78, 17660), (87, 17717), (103, 17831), (105, 17843), (119, 17954), (134, 18098), (135, 18110), (139, 18143), (140, 18158), (162, 18332), (164, 18338), (172, 18395), (174, 18437), (176, 18446), (179, 18458), (186, 18533), (194, 18602), (196, 18614), (202, 18662), (208, 18728), (216, 18806), (220, 18851), (228, 18908), (237, 18971), (240, 19007), (245, 19022), (249, 19052), (250, 19058), (251, 19070), (253, 19079), (255, 19091),

Gene: Bernal13_19 Start: 16980, Stop: 18686, Start Num: 47

Candidate Starts for Bernal13_19:

(23, 16872), (26, 16884), (Start: 47 @16980 has 26 MA's), (56, 17046), (68, 17121), (70, 17127), (77, 17211), (85, 17265), (91, 17310), (92, 17313), (101, 17379), (135, 17664), (162, 17886), (184, 18075), (202, 18213), (204, 18225), (220, 18402), (225, 18438), (249, 18603), (253, 18630), (259, 18669), (260, 18675),

Gene: BigCheese_18 Start: 16989, Stop: 18722, Start Num: 46

Candidate Starts for BigCheese_18:

(Start: 46 @16989 has 31 MA's), (56, 17058), (72, 17199), (73, 17202), (81, 17247), (85, 17280), (87, 17289), (91, 17325), (99, 17379), (103, 17406), (105, 17418), (109, 17469), (110, 17475), (114, 17508), (132, 17661), (135, 17685), (136, 17694), (141, 17739), (143, 17754), (153, 17832), (167, 17952), (173, 18015), (183, 18087), (187, 18123), (200, 18243), (202, 18249), (204, 18261), (209, 18324), (217, 18411), (220, 18438), (229, 18507), (230, 18522), (232, 18534), (237, 18558), (249, 18636),

Gene: Blackbeetle_50 Start: 26718, Stop: 28430, Start Num: 47

Candidate Starts for Blackbeetle_50:

(32, 26655), (Start: 47 @26718 has 26 MA's), (58, 26799), (65, 26856), (73, 26937), (75, 26943), (83, 27000), (84, 27012), (87, 27024), (92, 27063), (94, 27078), (104, 27147), (109, 27201), (111, 27210), (129, 27366), (135, 27414), (136, 27423), (137, 27432), (142, 27471), (144, 27486), (153, 27549), (155, 27561), (169, 27678), (170, 27681), (173, 27732), (177, 27759), (179, 27762), (181, 27783), (184, 27825), (199, 27945), (202, 27963), (216, 28107), (220, 28152), (223, 28170), (231, 28254), (233, 28263), (237, 28281), (239, 28302), (249, 28347), (250, 28353), (251, 28365), (254, 28377), (256, 28389), (259, 28413), (260, 28419),

Gene: BobsGarage_18 Start: 16989, Stop: 18722, Start Num: 46

Candidate Starts for BobsGarage_18:

(Start: 46 @16989 has 31 MA's), (56, 17058), (72, 17199), (73, 17202), (81, 17247), (85, 17280), (87, 17289), (91, 17325), (99, 17379), (103, 17406), (105, 17418), (109, 17469), (110, 17475), (114, 17508), (132, 17661), (135, 17685), (136, 17694), (141, 17739), (143, 17754), (153, 17832), (167, 17952), (173, 18015), (183, 18087), (187, 18123), (200, 18243), (202, 18249), (204, 18261), (209, 18324), (217, 18411), (220, 18438), (229, 18507), (230, 18522), (232, 18534), (237, 18558), (249, 18636),

Gene: Bongo_28 Start: 22368, Stop: 24104, Start Num: 40

Candidate Starts for Bongo_28:

(18, 22146), (Start: 31 @22326 has 3 MA's), (Start: 34 @22341 has 2 MA's), (Start: 40 @22368 has 16 MA's), (Start: 47 @22383 has 26 MA's), (52, 22422), (56, 22452), (57, 22458), (59, 22470), (71, 22575), (72, 22590), (79, 22629), (97, 22752), (98, 22761), (109, 22857), (115, 22899), (116, 22902), (135, 23079), (149, 23190), (153, 23217), (159, 23289), (160, 23298), (161, 23301), (163, 23313), (178, 23433), (179, 23436), (183, 23478), (185, 23508), (187, 23514), (200, 23634), (202, 23640), (246, 23994), (249, 24021), (251, 24039), (253, 24048),

Gene: BourbonZero_18 Start: 17371, Stop: 19134, Start Num: 35

Candidate Starts for BourbonZero_18:

(Start: 35 @17371 has 43 MA's), (41, 17398), (53, 17461), (61, 17509), (62, 17515), (66, 17551), (73, 17626), (87, 17713), (103, 17827), (105, 17839), (119, 17950), (134, 18094), (135, 18106), (137, 18124), (139, 18139), (162, 18328), (164, 18334), (172, 18391), (174, 18433), (176, 18442), (179, 18454), (186, 18529), (194, 18598), (196, 18610), (202, 18658), (208, 18724), (216, 18802), (220, 18847), (227, 18892), (228, 18904), (237, 18967), (240, 19003), (245, 19018), (249, 19048), (250, 19054), (251, 19066), (253, 19075), (255, 19087),

Gene: BrainDrainer_19 Start: 16711, Stop: 18474, Start Num: 35

Candidate Starts for BrainDrainer_19:

(Start: 35 @16711 has 43 MA's), (62, 16852), (72, 16960), (73, 16963), (102, 17161), (103, 17164), (105, 17176), (107, 17197), (121, 17305), (124, 17335), (135, 17443), (139, 17476), (140, 17491), (143, 17512), (162, 17668), (172, 17731), (174, 17773), (176, 17782), (179, 17794), (183, 17836), (187, 17872), (202, 17998), (206, 18031), (215, 18133), (216, 18142), (217, 18160), (220, 18187), (228, 18244), (232, 18283), (237, 18307), (240, 18343), (245, 18358), (249, 18388), (253, 18415), (255, 18427), (258, 18448),

Gene: Breezona_18 Start: 16989, Stop: 18722, Start Num: 46

Candidate Starts for Breezona_18:

(Start: 46 @16989 has 31 MA's), (56, 17058), (72, 17199), (73, 17202), (81, 17247), (85, 17280), (87, 17289), (91, 17325), (99, 17379), (103, 17406), (105, 17418), (109, 17469), (110, 17475), (114, 17508), (132, 17661), (135, 17685), (136, 17694), (141, 17739), (143, 17754), (153, 17832), (167, 17952), (173, 18015), (183, 18087), (187, 18123), (200, 18243), (202, 18249), (204, 18261), (209, 18324), (217, 18411), (220, 18438), (229, 18507), (230, 18522), (232, 18534), (237, 18558), (249, 18636),

Gene: Bricole_28 Start: 22354, Stop: 24090, Start Num: 40

Candidate Starts for Bricole_28:

(18, 22132), (Start: 31 @22312 has 3 MA's), (Start: 34 @22327 has 2 MA's), (Start: 40 @22354 has 16 MA's), (Start: 47 @22369 has 26 MA's), (52, 22408), (56, 22438), (57, 22444), (59, 22456), (71, 22561), (72, 22576), (79, 22615), (97, 22738), (98, 22747), (109, 22843), (115, 22885), (116, 22888), (118, 22900), (135, 23065), (149, 23176), (153, 23203), (159, 23275), (160, 23284), (161, 23287), (163, 23299), (178, 23419), (179, 23422), (183, 23464), (185, 23494), (187, 23500), (200, 23620), (202, 23626), (246, 23980), (249, 24007), (251, 24025), (253, 24034),

Gene: Bromden_19 Start: 17040, Stop: 18803, Start Num: 35

Candidate Starts for Bromden_19:

(Start: 35 @17040 has 43 MA's), (62, 17181), (65, 17211), (72, 17289), (73, 17292), (102, 17490), (103, 17493), (105, 17505), (121, 17634), (124, 17664), (126, 17685), (135, 17772), (136, 17781), (140, 17820), (143, 17841), (162, 17997), (172, 18060), (174, 18102), (176, 18111), (179, 18123), (187, 18201), (202, 18327), (206, 18360), (215, 18462), (216, 18471), (217, 18489), (220, 18516), (228, 18573), (237, 18636), (240, 18672), (245, 18687), (249, 18717), (253, 18744), (255, 18756), (258, 18777),

Gene: Calm_18 Start: 16760, Stop: 18529, Start Num: 35

Candidate Starts for Calm_18:

(Start: 24 @16697 has 1 MA's), (28, 16718), (30, 16733), (Start: 35 @16760 has 43 MA's), (53, 16853), (61, 16901), (62, 16907), (64, 16934), (65, 16937), (66, 16943), (72, 17015), (75, 17024), (78, 17048), (81, 17063), (84, 17093), (103, 17219), (104, 17228), (106, 17249), (108, 17264), (117, 17333), (123, 17369), (124, 17390), (131, 17459), (135, 17498), (153, 17636), (155, 17648), (162, 17723), (164, 17729), (166, 17747), (172, 17786), (173, 17819), (174, 17828), (176, 17837), (178, 17846), (190, 17969), (196, 18005), (202, 18053), (204, 18065), (208, 18119), (217, 18215), (218, 18233), (219, 18239), (220, 18242), (225, 18275), (228, 18299), (237, 18362), (243, 18404), (249, 18443), (251, 18461), (255, 18482), (258, 18503),

Gene: Caprice_47 Start: 26788, Stop: 28500, Start Num: 47

Candidate Starts for Caprice_47:

(32, 26725), (Start: 47 @26788 has 26 MA's), (58, 26869), (65, 26926), (73, 27007), (75, 27013), (83, 27070), (84, 27082), (87, 27094), (92, 27133), (94, 27148), (104, 27217), (109, 27271), (111, 27280), (129, 27436), (135, 27484), (136, 27493), (137, 27502), (142, 27541), (144, 27556), (153, 27619), (155, 27631), (169, 27748), (170, 27751), (173, 27802), (177, 27829), (179, 27832), (181, 27853), (184, 27895), (199, 28015), (202, 28033), (216, 28177), (220, 28222), (223, 28240), (231, 28324), (233, 28333), (237, 28351), (239, 28372), (249, 28417), (250, 28423), (251, 28435), (254, 28447), (257, 28468),

Gene: Chaser_18 Start: 16640, Stop: 18403, Start Num: 35

Candidate Starts for Chaser_18:

(Start: 35 @16640 has 43 MA's), (62, 16781), (72, 16889), (73, 16892), (102, 17090), (103, 17093), (105, 17105), (107, 17126), (121, 17234), (124, 17264), (135, 17372), (140, 17420), (143, 17441), (162, 17597), (172, 17660), (174, 17702), (176, 17711), (179, 17723), (183, 17765), (202, 17927), (206, 17960), (215, 18062), (216, 18071), (220, 18116), (228, 18173), (232, 18212), (237, 18236), (240, 18272), (245, 18287), (249, 18317), (253, 18344), (255, 18356), (258, 18377),

Gene: ChutneyChips_18 Start: 16633, Stop: 18396, Start Num: 35

Candidate Starts for ChutneyChips_18:

(Start: 35 @16633 has 43 MA's), (62, 16774), (65, 16804), (72, 16882), (73, 16885), (102, 17083), (103, 17086), (105, 17098), (107, 17119), (121, 17227), (124, 17257), (135, 17365), (140, 17413), (143, 17434), (162, 17590), (172, 17653), (174, 17695), (176, 17704), (179, 17716), (183, 17758), (187, 17794), (202, 17920), (206, 17953), (215, 18055), (216, 18064), (217, 18082), (220, 18109), (228, 18166), (232, 18205), (237, 18229), (240, 18265), (245, 18280), (249, 18310), (253, 18337), (255, 18349), (258, 18370),

Gene: CicholasNage_18 Start: 16748, Stop: 18517, Start Num: 35

Candidate Starts for CicholasNage_18:

(Start: 24 @16685 has 1 MA's), (28, 16706), (30, 16721), (Start: 35 @16748 has 43 MA's), (53, 16841), (61, 16889), (62, 16895), (64, 16922), (65, 16925), (66, 16931), (72, 17003), (75, 17012), (78, 17036), (81, 17051), (84, 17081), (103, 17207), (104, 17216), (106, 17237), (108, 17252), (117, 17321), (123,

17357), (124, 17378), (131, 17447), (135, 17486), (153, 17624), (155, 17636), (162, 17711), (164, 17717), (166, 17735), (172, 17774), (173, 17807), (174, 17816), (176, 17825), (178, 17834), (190, 17957), (196, 17993), (202, 18041), (204, 18053), (208, 18107), (217, 18203), (218, 18221), (219, 18227), (220, 18230), (225, 18263), (228, 18287), (237, 18350), (243, 18392), (249, 18431), (251, 18449), (255, 18470), (258, 18491),

Gene: Clarkson_51 Start: 27400, Stop: 29112, Start Num: 47

Candidate Starts for Clarkson_51:

(32, 27337), (Start: 47 @27400 has 26 MA's), (58, 27481), (65, 27538), (73, 27619), (75, 27625), (83, 27682), (84, 27694), (87, 27706), (92, 27745), (94, 27760), (104, 27829), (109, 27883), (111, 27892), (129, 28048), (135, 28096), (136, 28105), (137, 28114), (142, 28153), (144, 28168), (153, 28231), (155, 28243), (169, 28360), (173, 28414), (177, 28441), (179, 28444), (181, 28465), (184, 28507), (199, 28627), (202, 28645), (216, 28789), (220, 28834), (223, 28852), (231, 28936), (233, 28945), (237, 28963), (239, 28984), (249, 29029), (250, 29035), (251, 29047), (254, 29059), (256, 29071), (259, 29095), (260, 29101),

Gene: Claus_18 Start: 16970, Stop: 18703, Start Num: 46

Candidate Starts for Claus_18:

(Start: 46 @16970 has 31 MA's), (56, 17039), (72, 17180), (73, 17183), (78, 17213), (81, 17228), (85, 17261), (91, 17306), (99, 17360), (103, 17387), (105, 17399), (109, 17450), (110, 17456), (114, 17489), (132, 17642), (135, 17666), (136, 17675), (141, 17720), (147, 17771), (167, 17933), (173, 17996), (183, 18068), (187, 18104), (198, 18203), (200, 18224), (202, 18230), (204, 18242), (209, 18305), (217, 18392), (220, 18419), (225, 18452), (229, 18488), (230, 18503), (232, 18515), (237, 18539), (249, 18617), (251, 18635),

Gene: Clautastrophe_19 Start: 17373, Stop: 19136, Start Num: 35

Candidate Starts for Clautastrophe_19:

(Start: 35 @17373 has 43 MA's), (41, 17400), (53, 17463), (61, 17511), (62, 17517), (66, 17553), (73, 17628), (77, 17652), (78, 17658), (87, 17715), (103, 17829), (105, 17841), (119, 17952), (134, 18096), (135, 18108), (139, 18141), (162, 18330), (164, 18336), (172, 18393), (174, 18435), (176, 18444), (179, 18456), (186, 18531), (194, 18600), (196, 18612), (202, 18660), (208, 18726), (216, 18804), (220, 18849), (228, 18906), (237, 18969), (240, 19005), (245, 19020), (249, 19050), (250, 19056), (251, 19068), (253, 19077), (255, 19089),

Gene: Corazon_48 Start: 27353, Stop: 29065, Start Num: 47

Candidate Starts for Corazon_48:

(32, 27290), (Start: 47 @27353 has 26 MA's), (58, 27434), (65, 27491), (73, 27572), (75, 27578), (83, 27635), (84, 27647), (87, 27659), (92, 27698), (94, 27713), (104, 27782), (109, 27836), (111, 27845), (129, 28001), (135, 28049), (136, 28058), (137, 28067), (142, 28106), (144, 28121), (153, 28184), (155, 28196), (169, 28313), (170, 28316), (173, 28367), (177, 28394), (179, 28397), (181, 28418), (184, 28460), (199, 28580), (202, 28598), (216, 28742), (220, 28787), (223, 28805), (231, 28889), (233, 28898), (237, 28916), (239, 28937), (249, 28982), (250, 28988), (251, 29000), (254, 29012), (257, 29033), (259, 29048), (260, 29054),

Gene: Cosmo_40 Start: 25304, Stop: 27688, Start Num: 1

Candidate Starts for Cosmo_40:

(Start: 1 @25304 has 5 MA's), (2, 25421), (3, 25442), (4, 25445), (5, 25475), (6, 25481), (7, 25490), (12, 25580), (13, 25616), (14, 25634), (15, 25661), (16, 25673), (17, 25682), (20, 25745), (21, 25781), (22, 25817), (Start: 24 @25820 has 1 MA's), (25, 25826), (37, 25898), (45, 25928), (55, 25997), (56, 26000), (64, 26087), (68, 26105), (69, 26108), (72, 26168), (79, 26207), (85, 26249), (87, 26258), (88, 26264), (90, 26279), (91, 26294), (98, 26342), (109, 26438), (115, 26480), (116, 26483), (135, 26660), (137, 26678), (139, 26693), (140, 26708), (143, 26729), (146, 26762), (149, 26771), (152, 26801), (156, 26840), (160, 26882), (162, 26894), (163, 26897), (172, 26957), (178, 27017), (183, 27062),

(187, 27098), (194, 27164), (200, 27218), (202, 27224), (208, 27290), (227, 27461), (229, 27485), (249, 27605), (252, 27626), (254, 27635), (259, 27671),

Gene: Crossroads_18 Start: 16989, Stop: 18722, Start Num: 46

Candidate Starts for Crossroads_18:

(Start: 46 @16989 has 31 MA's), (56, 17058), (72, 17199), (73, 17202), (81, 17247), (85, 17280), (87, 17289), (91, 17325), (99, 17379), (103, 17406), (105, 17418), (109, 17469), (110, 17475), (114, 17508), (132, 17661), (135, 17685), (136, 17694), (141, 17739), (143, 17754), (153, 17832), (167, 17952), (173, 18015), (183, 18087), (187, 18123), (200, 18243), (202, 18249), (204, 18261), (209, 18324), (214, 18375), (217, 18411), (220, 18438), (229, 18507), (230, 18522), (232, 18534), (237, 18558), (249, 18636),

Gene: DHan_18 Start: 16906, Stop: 18639, Start Num: 46

Candidate Starts for DHan_18:

(Start: 46 @16906 has 31 MA's), (56, 16975), (72, 17116), (73, 17119), (78, 17149), (81, 17164), (85, 17197), (91, 17242), (99, 17296), (103, 17323), (105, 17335), (109, 17386), (110, 17392), (114, 17425), (132, 17578), (135, 17602), (136, 17611), (141, 17656), (147, 17707), (158, 17812), (167, 17869), (173, 17932), (183, 18004), (187, 18040), (198, 18139), (200, 18160), (202, 18166), (204, 18178), (209, 18241), (217, 18328), (220, 18355), (225, 18388), (229, 18424), (230, 18439), (232, 18451), (237, 18475), (249, 18553), (251, 18571),

Gene: DanBing_17 Start: 16810, Stop: 18543, Start Num: 46

Candidate Starts for DanBing_17:

(Start: 46 @16810 has 31 MA's), (56, 16879), (72, 17020), (73, 17023), (78, 17053), (81, 17068), (85, 17101), (91, 17146), (99, 17200), (103, 17227), (105, 17239), (109, 17290), (110, 17296), (114, 17329), (132, 17482), (135, 17506), (136, 17515), (141, 17560), (147, 17611), (158, 17716), (167, 17773), (173, 17836), (183, 17908), (187, 17944), (198, 18043), (200, 18064), (202, 18070), (204, 18082), (209, 18145), (217, 18232), (220, 18259), (225, 18292), (229, 18328), (230, 18343), (232, 18355), (237, 18379), (249, 18457), (251, 18475),

Gene: Diminimus_29 Start: 22367, Stop: 24103, Start Num: 40

Candidate Starts for Diminimus_29:

(18, 22145), (Start: 31 @22325 has 3 MA's), (Start: 34 @22340 has 2 MA's), (Start: 40 @22367 has 16 MA's), (Start: 47 @22382 has 26 MA's), (52, 22421), (56, 22451), (57, 22457), (59, 22469), (71, 22574), (72, 22589), (79, 22628), (97, 22751), (98, 22760), (109, 22856), (115, 22898), (116, 22901), (135, 23078), (149, 23189), (153, 23216), (159, 23288), (160, 23297), (161, 23300), (163, 23312), (178, 23432), (179, 23435), (183, 23477), (185, 23507), (187, 23513), (200, 23633), (202, 23639), (246, 23993), (249, 24020), (251, 24038), (253, 24047),

Gene: DirkDirk_18 Start: 16739, Stop: 18508, Start Num: 35

Candidate Starts for DirkDirk_18:

(Start: 24 @16676 has 1 MA's), (28, 16697), (30, 16712), (Start: 35 @16739 has 43 MA's), (53, 16832), (61, 16880), (62, 16886), (64, 16913), (66, 16922), (72, 16994), (75, 17003), (78, 17027), (81, 17042), (84, 17072), (103, 17198), (104, 17207), (106, 17228), (108, 17243), (117, 17312), (123, 17348), (124, 17369), (131, 17438), (135, 17477), (153, 17615), (155, 17627), (162, 17702), (164, 17708), (166, 17726), (172, 17765), (173, 17798), (174, 17807), (176, 17816), (178, 17825), (190, 17948), (196, 17984), (202, 18032), (204, 18044), (208, 18098), (217, 18194), (218, 18212), (219, 18218), (220, 18221), (225, 18254), (228, 18278), (237, 18341), (243, 18383), (249, 18422), (251, 18440), (255, 18461), (258, 18482),

Gene: Douge_18 Start: 16581, Stop: 18344, Start Num: 35

Candidate Starts for Douge_18:

(Start: 35 @16581 has 43 MA's), (62, 16722), (72, 16830), (73, 16833), (102, 17031), (103, 17034), (105, 17046), (107, 17067), (121, 17175), (124, 17205), (135, 17313), (139, 17346), (140, 17361), (143, 17382), (162, 17538), (172, 17601), (174, 17643), (176, 17652), (183, 17706), (187, 17742), (202, 17868), (206, 17901), (215, 18003), (216, 18012), (217, 18030), (220, 18057), (228, 18114), (232, 18153), (237, 18177), (240, 18213), (245, 18228), (249, 18258), (253, 18285), (255, 18297), (258, 18318),

Gene: Douzhi_18 Start: 16572, Stop: 18335, Start Num: 35

Candidate Starts for Douzhi_18:

(Start: 35 @16572 has 43 MA's), (62, 16713), (72, 16821), (73, 16824), (102, 17022), (103, 17025), (105, 17037), (107, 17058), (121, 17166), (124, 17196), (135, 17304), (139, 17337), (140, 17352), (143, 17373), (162, 17529), (172, 17592), (174, 17634), (176, 17643), (179, 17655), (183, 17697), (187, 17733), (202, 17859), (206, 17892), (215, 17994), (216, 18003), (217, 18021), (220, 18048), (228, 18105), (232, 18144), (237, 18168), (240, 18204), (245, 18219), (249, 18249), (253, 18276), (255, 18288), (258, 18309),

Gene: DrSeegs_18 Start: 16989, Stop: 18722, Start Num: 46

Candidate Starts for DrSeegs_18:

(Start: 46 @16989 has 31 MA's), (56, 17058), (72, 17199), (73, 17202), (81, 17247), (85, 17280), (87, 17289), (91, 17325), (99, 17379), (103, 17406), (105, 17418), (109, 17469), (110, 17475), (114, 17508), (132, 17661), (135, 17685), (136, 17694), (141, 17739), (143, 17754), (153, 17832), (167, 17952), (173, 18015), (183, 18087), (187, 18123), (200, 18243), (202, 18249), (204, 18261), (209, 18324), (217, 18411), (220, 18438), (229, 18507), (230, 18522), (232, 18534), (237, 18558), (249, 18636),

Gene: Dulcita_29 Start: 22367, Stop: 24103, Start Num: 40

Candidate Starts for Dulcita_29:

(18, 22145), (Start: 31 @22325 has 3 MA's), (Start: 34 @22340 has 2 MA's), (Start: 40 @22367 has 16 MA's), (Start: 47 @22382 has 26 MA's), (52, 22421), (56, 22451), (57, 22457), (59, 22469), (71, 22574), (72, 22589), (79, 22628), (97, 22751), (98, 22760), (109, 22856), (115, 22898), (116, 22901), (135, 23078), (149, 23189), (153, 23216), (159, 23288), (160, 23297), (161, 23300), (163, 23312), (178, 23432), (179, 23435), (183, 23477), (185, 23507), (187, 23513), (200, 23633), (202, 23639), (246, 23993), (249, 24020), (251, 24038), (253, 24047),

Gene: DuncansLeg_19 Start: 17373, Stop: 19136, Start Num: 35

Candidate Starts for DuncansLeg_19:

(Start: 35 @17373 has 43 MA's), (41, 17400), (53, 17463), (61, 17511), (62, 17517), (66, 17553), (73, 17628), (87, 17715), (103, 17829), (105, 17841), (119, 17952), (134, 18096), (135, 18108), (139, 18141), (162, 18330), (164, 18336), (172, 18393), (174, 18435), (176, 18444), (179, 18456), (186, 18531), (193, 18597), (196, 18612), (202, 18660), (216, 18804), (220, 18849), (227, 18894), (228, 18906), (237, 18969), (240, 19005), (245, 19020), (249, 19050), (250, 19056), (251, 19068), (253, 19077), (255, 19089),

Gene: DyoEdafos_19 Start: 16789, Stop: 18552, Start Num: 35

Candidate Starts for DyoEdafos_19:

(Start: 35 @16789 has 43 MA's), (62, 16930), (65, 16960), (72, 17038), (73, 17041), (102, 17239), (103, 17242), (105, 17254), (107, 17275), (121, 17383), (124, 17413), (135, 17521), (136, 17530), (139, 17554), (140, 17569), (143, 17590), (162, 17746), (172, 17809), (174, 17851), (176, 17860), (179, 17872), (187, 17950), (202, 18076), (203, 18085), (206, 18109), (215, 18211), (216, 18220), (217, 18238), (220, 18265), (228, 18322), (237, 18385), (240, 18421), (245, 18436), (249, 18466), (253, 18493), (255, 18505), (258, 18526),

Gene: Ellson_19 Start: 17381, Stop: 19144, Start Num: 35

Candidate Starts for Ellson_19:

(Start: 35 @17381 has 43 MA's), (41, 17408), (53, 17471), (61, 17519), (62, 17525), (66, 17561), (73, 17636), (87, 17723), (103, 17837), (105, 17849), (119, 17960), (134, 18104), (135, 18116), (137, 18134), (139, 18149), (162, 18338), (172, 18401), (174, 18443), (176, 18452), (179, 18464), (186, 18539), (194, 18608), (196, 18620), (202, 18668), (208, 18734), (216, 18812), (220, 18857), (227, 18902), (228, 18914), (237, 18977), (240, 19013), (245, 19028), (249, 19058), (250, 19064), (251, 19076), (253, 19085), (255, 19097),

Gene: Enceladus_18 Start: 16740, Stop: 18509, Start Num: 35

Candidate Starts for Enceladus_18:

(Start: 24 @16677 has 1 MA's), (28, 16698), (30, 16713), (Start: 35 @16740 has 43 MA's), (53, 16833), (61, 16881), (62, 16887), (64, 16914), (66, 16923), (72, 16995), (75, 17004), (78, 17028), (81, 17043), (84, 17073), (103, 17199), (104, 17208), (106, 17229), (108, 17244), (117, 17313), (123, 17349), (124, 17370), (131, 17439), (135, 17478), (153, 17616), (155, 17628), (162, 17703), (164, 17709), (166, 17727), (172, 17766), (173, 17799), (174, 17808), (176, 17817), (178, 17826), (190, 17949), (196, 17985), (202, 18033), (204, 18045), (208, 18099), (217, 18195), (218, 18213), (219, 18219), (220, 18222), (225, 18255), (228, 18279), (237, 18342), (243, 18384), (249, 18423), (251, 18441), (255, 18462), (258, 18483),

Gene: EniyanLRS_37 Start: 25002, Stop: 27386, Start Num: 1

Candidate Starts for EniyanLRS_37:

(Start: 1 @25002 has 5 MA's), (2, 25119), (3, 25140), (4, 25143), (5, 25173), (6, 25179), (7, 25188), (12, 25278), (13, 25314), (14, 25332), (15, 25359), (16, 25371), (17, 25380), (20, 25443), (21, 25479), (22, 25515), (Start: 24 @25518 has 1 MA's), (25, 25524), (37, 25596), (45, 25626), (55, 25695), (56, 25698), (64, 25785), (68, 25803), (69, 25806), (72, 25866), (79, 25905), (85, 25947), (87, 25956), (88, 25962), (90, 25977), (91, 25992), (98, 26040), (109, 26136), (115, 26178), (116, 26181), (135, 26358), (137, 26376), (139, 26391), (140, 26406), (143, 26427), (146, 26460), (149, 26469), (152, 26499), (156, 26538), (160, 26580), (162, 26592), (163, 26595), (172, 26655), (178, 26715), (183, 26760), (187, 26796), (194, 26862), (200, 26916), (202, 26922), (208, 26988), (227, 27159), (229, 27183), (249, 27303), (252, 27324), (254, 27333), (259, 27369),

Gene: Estes_33 Start: 23088, Stop: 24827, Start Num: 40

Candidate Starts for Estes_33:

(Start: 31 @23046 has 3 MA's), (Start: 34 @23061 has 2 MA's), (Start: 40 @23088 has 16 MA's), (54, 23166), (56, 23172), (59, 23190), (79, 23352), (81, 23361), (82, 23376), (96, 23463), (97, 23475), (98, 23484), (104, 23526), (109, 23580), (112, 23592), (115, 23622), (116, 23625), (121, 23658), (133, 23787), (135, 23802), (137, 23820), (159, 24012), (160, 24021), (162, 24033), (164, 24039), (174, 24138), (176, 24147), (178, 24156), (182, 24186), (184, 24225), (194, 24303), (197, 24318), (200, 24357), (202, 24363), (246, 24717), (249, 24744), (250, 24750), (257, 24795),

Gene: Faith1_18 Start: 16989, Stop: 18722, Start Num: 46

Candidate Starts for Faith1_18:

(Start: 46 @16989 has 31 MA's), (56, 17058), (72, 17199), (73, 17202), (81, 17247), (85, 17280), (87, 17289), (91, 17325), (99, 17379), (103, 17406), (105, 17418), (109, 17469), (110, 17475), (114, 17508), (132, 17661), (135, 17685), (136, 17694), (141, 17739), (143, 17754), (153, 17832), (167, 17952), (173, 18015), (183, 18087), (187, 18123), (200, 18243), (202, 18249), (204, 18261), (209, 18324), (217, 18411), (220, 18438), (229, 18507), (230, 18522), (232, 18534), (237, 18558), (249, 18636),

Gene: Farewell_16 Start: 16143, Stop: 17858, Start Num: 44

Candidate Starts for Farewell_16:

(Start: 44 @16143 has 2 MA's), (48, 16152), (65, 16278), (72, 16356), (74, 16362), (75, 16365), (80, 16398), (87, 16446), (88, 16452), (97, 16518), (101, 16551), (104, 16569), (115, 16665), (128, 16779),

(135, 16836), (137, 16854), (141, 16890), (153, 16971), (154, 16980), (162, 17058), (168, 17094), (179, 17184), (187, 17259), (202, 17385), (212, 17475), (221, 17577), (237, 17706), (247, 17748), (249, 17775), (253, 17802), (255, 17814), (256, 17817), (259, 17841),

Gene: FarmResident_18 Start: 16625, Stop: 18388, Start Num: 35

Candidate Starts for FarmResident_18:

(Start: 35 @16625 has 43 MA's), (62, 16766), (72, 16874), (73, 16877), (102, 17075), (103, 17078), (105, 17090), (107, 17111), (121, 17219), (124, 17249), (135, 17357), (139, 17390), (140, 17405), (143, 17426), (162, 17582), (172, 17645), (174, 17687), (176, 17696), (183, 17750), (187, 17786), (202, 17912), (206, 17945), (215, 18047), (216, 18056), (217, 18074), (220, 18101), (228, 18158), (232, 18197), (237, 18221), (240, 18257), (245, 18272), (249, 18302), (253, 18329), (255, 18341), (258, 18362),

Gene: FeliMaine_52 Start: 27401, Stop: 29113, Start Num: 47

Candidate Starts for FeliMaine_52:

(32, 27338), (Start: 47 @27401 has 26 MA's), (58, 27482), (65, 27539), (73, 27620), (75, 27626), (83, 27683), (84, 27695), (87, 27707), (92, 27746), (94, 27761), (104, 27830), (109, 27884), (111, 27893), (129, 28049), (135, 28097), (136, 28106), (137, 28115), (142, 28154), (144, 28169), (153, 28232), (155, 28244), (169, 28361), (170, 28364), (173, 28415), (177, 28442), (179, 28445), (181, 28466), (184, 28508), (199, 28628), (202, 28646), (216, 28790), (220, 28835), (223, 28853), (231, 28937), (233, 28946), (237, 28964), (239, 28985), (249, 29030), (250, 29036), (251, 29048), (254, 29060), (257, 29081), (259, 29096), (260, 29102),

Gene: Finemlucis_18 Start: 16995, Stop: 18728, Start Num: 46

Candidate Starts for Finemlucis_18:

(Start: 46 @16995 has 31 MA's), (56, 17064), (72, 17205), (73, 17208), (81, 17253), (85, 17286), (87, 17295), (91, 17331), (99, 17385), (103, 17412), (105, 17424), (109, 17475), (110, 17481), (114, 17514), (132, 17667), (135, 17691), (136, 17700), (141, 17745), (143, 17760), (153, 17838), (167, 17958), (173, 18021), (183, 18093), (187, 18129), (200, 18249), (202, 18255), (204, 18267), (209, 18330), (217, 18417), (220, 18444), (229, 18513), (230, 18528), (232, 18540), (237, 18564), (249, 18642),

Gene: Finnry_19 Start: 17377, Stop: 19140, Start Num: 35

Candidate Starts for Finnry_19:

(Start: 35 @17377 has 43 MA's), (41, 17404), (53, 17467), (61, 17515), (62, 17521), (66, 17557), (73, 17632), (77, 17656), (78, 17662), (87, 17719), (103, 17833), (105, 17845), (119, 17956), (134, 18100), (135, 18112), (139, 18145), (140, 18160), (162, 18334), (164, 18340), (172, 18397), (174, 18439), (176, 18448), (179, 18460), (186, 18535), (194, 18604), (196, 18616), (202, 18664), (208, 18730), (216, 18808), (220, 18853), (228, 18910), (237, 18973), (240, 19009), (245, 19024), (249, 19054), (250, 19060), (251, 19072), (253, 19081), (255, 19093),

Gene: FreakyGoo_29 Start: 22368, Stop: 24104, Start Num: 40

Candidate Starts for FreakyGoo_29:

(18, 22146), (Start: 31 @22326 has 3 MA's), (Start: 34 @22341 has 2 MA's), (Start: 40 @22368 has 16 MA's), (Start: 47 @22383 has 26 MA's), (52, 22422), (56, 22452), (57, 22458), (59, 22470), (71, 22575), (72, 22590), (79, 22629), (97, 22752), (98, 22761), (109, 22857), (115, 22899), (116, 22902), (135, 23079), (149, 23190), (153, 23217), (159, 23289), (160, 23298), (161, 23301), (163, 23313), (178, 23433), (179, 23436), (183, 23478), (185, 23508), (187, 23514), (200, 23634), (202, 23640), (246, 23994), (249, 24021), (251, 24039), (253, 24048),

Gene: Gabriela_18 Start: 16989, Stop: 18722, Start Num: 46

Candidate Starts for Gabriela_18:

(Start: 46 @16989 has 31 MA's), (56, 17058), (72, 17199), (73, 17202), (81, 17247), (85, 17280), (87, 17289), (91, 17325), (99, 17379), (103, 17406), (105, 17418), (109, 17469), (110, 17475), (114, 17508), (132, 17661), (135, 17685), (136, 17694), (141, 17739), (143, 17754), (153, 17832), (167, 17952), (173, 18015), (183, 18087), (187, 18123), (200, 18243), (202, 18249), (204, 18261), (209, 18324), (217, 18411), (220, 18438), (229, 18507), (230, 18522), (232, 18534), (237, 18558), (249, 18636),

Gene: Gardann_18 Start: 16994, Stop: 18727, Start Num: 46

Candidate Starts for Gardann_18:

(Start: 46 @16994 has 31 MA's), (56, 17063), (72, 17204), (73, 17207), (81, 17252), (85, 17285), (87, 17294), (91, 17330), (99, 17384), (103, 17411), (105, 17423), (109, 17474), (110, 17480), (114, 17513), (132, 17666), (135, 17690), (136, 17699), (141, 17744), (143, 17759), (153, 17837), (167, 17957), (173, 18020), (183, 18092), (187, 18128), (200, 18248), (202, 18254), (204, 18266), (209, 18329), (217, 18416), (220, 18443), (229, 18512), (230, 18527), (232, 18539), (237, 18563), (249, 18641),

Gene: GardenSalsa_32 Start: 22870, Stop: 24651, Start Num: 31

Candidate Starts for GardenSalsa_32:

(Start: 31 @22870 has 3 MA's), (Start: 34 @22885 has 2 MA's), (Start: 40 @22912 has 16 MA's), (54, 22990), (56, 22996), (59, 23014), (79, 23176), (81, 23185), (82, 23200), (96, 23287), (97, 23299), (98, 23308), (109, 23404), (112, 23416), (115, 23446), (116, 23449), (121, 23482), (133, 23611), (135, 23626), (137, 23644), (140, 23674), (159, 23836), (160, 23845), (162, 23857), (164, 23863), (174, 23962), (176, 23971), (178, 23980), (184, 24049), (197, 24142), (200, 24181), (202, 24187), (203, 24196), (246, 24541), (249, 24568), (250, 24574), (257, 24619),

Gene: Gattaca_49 Start: 26580, Stop: 28292, Start Num: 47

Candidate Starts for Gattaca_49:

(32, 26517), (Start: 47 @26580 has 26 MA's), (58, 26661), (65, 26718), (73, 26799), (75, 26805), (83, 26862), (84, 26874), (87, 26886), (92, 26925), (94, 26940), (104, 27009), (109, 27063), (111, 27072), (129, 27228), (135, 27276), (136, 27285), (137, 27294), (142, 27333), (144, 27348), (153, 27411), (155, 27423), (169, 27540), (170, 27543), (173, 27594), (177, 27621), (179, 27624), (181, 27645), (184, 27687), (199, 27807), (202, 27825), (216, 27969), (220, 28014), (223, 28032), (231, 28116), (233, 28125), (237, 28143), (239, 28164), (249, 28209), (250, 28215), (251, 28227), (254, 28239), (257, 28260), (259, 28275), (260, 28281),

Gene: GenevaB15_32 Start: 22915, Stop: 24696, Start Num: 31

Candidate Starts for GenevaB15_32:

(Start: 31 @22915 has 3 MA's), (Start: 34 @22930 has 2 MA's), (Start: 40 @22957 has 16 MA's), (54, 23035), (56, 23041), (59, 23059), (79, 23221), (81, 23230), (82, 23245), (96, 23332), (97, 23344), (98, 23353), (109, 23449), (112, 23461), (115, 23491), (116, 23494), (121, 23527), (133, 23656), (135, 23671), (137, 23689), (159, 23881), (160, 23890), (162, 23902), (164, 23908), (174, 24007), (176, 24016), (178, 24025), (184, 24094), (194, 24172), (197, 24187), (200, 24226), (202, 24232), (246, 24586), (249, 24613), (250, 24619),

Gene: Glaske16_29 Start: 22367, Stop: 24103, Start Num: 40

Candidate Starts for Glaske16_29:

(18, 22145), (Start: 31 @22325 has 3 MA's), (Start: 34 @22340 has 2 MA's), (Start: 40 @22367 has 16 MA's), (Start: 47 @22382 has 26 MA's), (52, 22421), (56, 22451), (57, 22457), (59, 22469), (71, 22574), (72, 22589), (79, 22628), (97, 22751), (98, 22760), (109, 22856), (115, 22898), (116, 22901), (135, 23078), (149, 23189), (153, 23216), (159, 23288), (160, 23297), (161, 23300), (163, 23312), (178, 23432), (179, 23435), (183, 23477), (185, 23507), (187, 23513), (200, 23633), (202, 23639), (246, 23993), (249, 24020), (251, 24038), (253, 24047),

Gene: GoongGoong_49 Start: 26620, Stop: 28332, Start Num: 47

Candidate Starts for GoongGoong_49:

(32, 26557), (Start: 47 @26620 has 26 MA's), (58, 26701), (65, 26758), (73, 26839), (75, 26845), (83, 26902), (84, 26914), (87, 26926), (92, 26965), (94, 26980), (104, 27049), (109, 27103), (111, 27112), (129, 27268), (135, 27316), (136, 27325), (137, 27334), (142, 27373), (144, 27388), (153, 27451), (155, 27463), (169, 27580), (170, 27583), (173, 27634), (177, 27661), (179, 27664), (181, 27685), (184, 27727), (199, 27847), (202, 27865), (216, 28009), (220, 28054), (223, 28072), (231, 28156), (237, 28183), (239, 28204), (249, 28249), (250, 28255), (251, 28267), (254, 28279), (256, 28291), (259, 28315), (260, 28321),

Gene: GuuelaD_18 Start: 17023, Stop: 18756, Start Num: 46

Candidate Starts for GuuelaD_18:

(Start: 46 @17023 has 31 MA's), (56, 17092), (72, 17233), (73, 17236), (78, 17266), (81, 17281), (85, 17314), (87, 17323), (91, 17359), (99, 17413), (103, 17440), (109, 17503), (110, 17509), (114, 17542), (123, 17590), (132, 17695), (135, 17719), (136, 17728), (141, 17773), (144, 17791), (147, 17824), (153, 17866), (167, 17986), (173, 18049), (183, 18121), (186, 18154), (187, 18157), (197, 18238), (198, 18256), (200, 18277), (202, 18283), (204, 18295), (209, 18358), (217, 18445), (220, 18472), (225, 18505), (229, 18541), (230, 18556), (237, 18592), (249, 18670), (251, 18688),

Gene: Hafay_18 Start: 17022, Stop: 18755, Start Num: 46

Candidate Starts for Hafay_18:

(Start: 46 @17022 has 31 MA's), (56, 17091), (72, 17232), (73, 17235), (81, 17280), (85, 17313), (87, 17322), (91, 17358), (99, 17412), (103, 17439), (105, 17451), (109, 17502), (110, 17508), (114, 17541), (132, 17694), (135, 17718), (136, 17727), (141, 17772), (143, 17787), (153, 17865), (167, 17985), (173, 18048), (183, 18120), (187, 18156), (200, 18276), (202, 18282), (204, 18294), (209, 18357), (217, 18444), (220, 18471), (229, 18540), (230, 18555), (232, 18567), (237, 18591), (249, 18669),

Gene: Halena_18 Start: 16747, Stop: 18516, Start Num: 35

Candidate Starts for Halena_18:

(Start: 24 @16684 has 1 MA's), (28, 16705), (30, 16720), (Start: 35 @16747 has 43 MA's), (53, 16840), (61, 16888), (62, 16894), (64, 16921), (65, 16924), (66, 16930), (72, 17002), (75, 17011), (78, 17035), (81, 17050), (84, 17080), (103, 17206), (104, 17215), (106, 17236), (108, 17251), (117, 17320), (123, 17356), (124, 17377), (131, 17446), (135, 17485), (153, 17623), (155, 17635), (162, 17710), (164, 17716), (166, 17734), (172, 17773), (173, 17806), (174, 17815), (176, 17824), (178, 17833), (179, 17836), (190, 17956), (196, 17992), (202, 18040), (204, 18052), (208, 18106), (217, 18202), (218, 18220), (219, 18226), (220, 18229), (225, 18262), (228, 18286), (237, 18349), (243, 18391), (249, 18430), (251, 18448), (255, 18469), (258, 18490),

Gene: Huphlepuuff_52 Start: 27205, Stop: 28917, Start Num: 47

Candidate Starts for Huphlepuuff_52:

(32, 27142), (Start: 47 @27205 has 26 MA's), (58, 27286), (65, 27343), (73, 27424), (75, 27430), (83, 27487), (84, 27499), (87, 27511), (92, 27550), (94, 27565), (104, 27634), (109, 27688), (111, 27697), (129, 27853), (135, 27901), (136, 27910), (137, 27919), (142, 27958), (144, 27973), (153, 28036), (155, 28048), (169, 28165), (170, 28168), (173, 28219), (177, 28246), (179, 28249), (181, 28270), (184, 28312), (199, 28432), (202, 28450), (216, 28594), (220, 28639), (223, 28657), (231, 28741), (233, 28750), (237, 28768), (239, 28789), (249, 28834), (250, 28840), (251, 28852), (254, 28864), (256, 28876), (259, 28900), (260, 28906),

Gene: IPHane7_28 Start: 22368, Stop: 24104, Start Num: 40

Candidate Starts for IPHane7_28:

(18, 22146), (Start: 31 @22326 has 3 MA's), (Start: 34 @22341 has 2 MA's), (Start: 40 @22368 has 16 MA's), (Start: 47 @22383 has 26 MA's), (52, 22422), (56, 22452), (57, 22458), (59, 22470), (71,

22575), (72, 22590), (79, 22629), (97, 22752), (98, 22761), (109, 22857), (115, 22899), (116, 22902), (135, 23079), (149, 23190), (153, 23217), (159, 23289), (160, 23298), (161, 23301), (163, 23313), (178, 23433), (179, 23436), (183, 23478), (185, 23508), (187, 23514), (200, 23634), (202, 23640), (246, 23994), (249, 24021), (251, 24039), (253, 24048),

Gene: Ibrahim_19 Start: 16980, Stop: 18686, Start Num: 47

Candidate Starts for Ibrahim_19:

(23, 16872), (26, 16884), (Start: 47 @16980 has 26 MA's), (56, 17046), (68, 17121), (70, 17127), (77, 17211), (85, 17265), (91, 17310), (92, 17313), (101, 17379), (135, 17664), (162, 17886), (184, 18075), (202, 18213), (204, 18225), (220, 18402), (225, 18438), (249, 18603), (253, 18630), (259, 18669), (260, 18675),

Gene: Itos_18 Start: 16989, Stop: 18722, Start Num: 46

Candidate Starts for Itos_18:

(Start: 46 @16989 has 31 MA's), (56, 17058), (72, 17199), (73, 17202), (81, 17247), (85, 17280), (87, 17289), (91, 17325), (99, 17379), (103, 17406), (105, 17418), (109, 17469), (110, 17475), (114, 17508), (132, 17661), (135, 17685), (136, 17694), (141, 17739), (143, 17754), (153, 17832), (167, 17952), (173, 18015), (183, 18087), (187, 18123), (200, 18243), (202, 18249), (204, 18261), (209, 18324), (217, 18411), (220, 18438), (229, 18507), (230, 18522), (232, 18534), (237, 18558), (249, 18636),

Gene: Izel_29 Start: 22367, Stop: 24103, Start Num: 40

Candidate Starts for Izel_29:

(18, 22145), (Start: 31 @22325 has 3 MA's), (Start: 34 @22340 has 2 MA's), (Start: 40 @22367 has 16 MA's), (Start: 47 @22382 has 26 MA's), (52, 22421), (56, 22451), (57, 22457), (59, 22469), (71, 22574), (72, 22589), (79, 22628), (97, 22751), (98, 22760), (109, 22856), (115, 22898), (116, 22901), (135, 23078), (149, 23189), (153, 23216), (159, 23288), (160, 23297), (161, 23300), (163, 23312), (178, 23432), (179, 23435), (183, 23477), (185, 23507), (187, 23513), (200, 23633), (202, 23639), (246, 23993), (249, 24020), (251, 24038), (253, 24047),

Gene: Jobypre_19 Start: 17373, Stop: 19136, Start Num: 35

Candidate Starts for Jobypre_19:

(Start: 35 @17373 has 43 MA's), (41, 17400), (53, 17463), (61, 17511), (62, 17517), (66, 17553), (73, 17628), (77, 17652), (78, 17658), (87, 17715), (103, 17829), (105, 17841), (119, 17952), (134, 18096), (135, 18108), (139, 18141), (162, 18330), (164, 18336), (172, 18393), (174, 18435), (176, 18444), (179, 18456), (186, 18531), (194, 18600), (196, 18612), (202, 18660), (208, 18726), (216, 18804), (220, 18849), (228, 18906), (237, 18969), (240, 19005), (245, 19020), (249, 19050), (250, 19056), (251, 19068), (253, 19077), (255, 19089),

Gene: JoeDirt_18 Start: 16738, Stop: 18507, Start Num: 35

Candidate Starts for JoeDirt_18:

(Start: 24 @16675 has 1 MA's), (28, 16696), (30, 16711), (Start: 35 @16738 has 43 MA's), (53, 16831), (61, 16879), (62, 16885), (64, 16912), (66, 16921), (72, 16993), (75, 17002), (78, 17026), (81, 17041), (84, 17071), (103, 17197), (104, 17206), (106, 17227), (108, 17242), (117, 17311), (123, 17347), (124, 17368), (131, 17437), (135, 17476), (153, 17614), (155, 17626), (162, 17701), (164, 17707), (166, 17725), (172, 17764), (173, 17797), (174, 17806), (176, 17815), (178, 17824), (190, 17947), (196, 17983), (202, 18031), (204, 18043), (208, 18097), (217, 18193), (218, 18211), (219, 18217), (220, 18220), (225, 18253), (228, 18277), (237, 18340), (243, 18382), (249, 18421), (251, 18439), (255, 18460), (258, 18481),

Gene: JoieB_51 Start: 27397, Stop: 29109, Start Num: 47

Candidate Starts for JoieB_51:

(32, 27334), (Start: 47 @27397 has 26 MA's), (58, 27478), (65, 27535), (73, 27616), (75, 27622), (83, 27679), (84, 27691), (87, 27703), (92, 27742), (94, 27757), (104, 27826), (109, 27880), (111, 27889), (129, 28045), (135, 28093), (136, 28102), (137, 28111), (142, 28150), (144, 28165), (153, 28228), (155, 28240), (169, 28357), (170, 28360), (173, 28411), (177, 28438), (179, 28441), (181, 28462), (184, 28504), (199, 28624), (202, 28642), (216, 28786), (220, 28831), (223, 28849), (231, 28933), (233, 28942), (237, 28960), (239, 28981), (249, 29026), (250, 29032), (251, 29044), (254, 29056), (257, 29077), (259, 29092), (260, 29098),

Gene: Jubie_19 Start: 17374, Stop: 19137, Start Num: 35

Candidate Starts for Jubie_19:

(Start: 35 @17374 has 43 MA's), (41, 17401), (53, 17464), (61, 17512), (62, 17518), (66, 17554), (73, 17629), (77, 17653), (78, 17659), (87, 17716), (103, 17830), (105, 17842), (119, 17953), (134, 18097), (135, 18109), (139, 18142), (162, 18331), (164, 18337), (172, 18394), (174, 18436), (176, 18445), (179, 18457), (186, 18532), (194, 18601), (196, 18613), (202, 18661), (208, 18727), (216, 18805), (220, 18850), (228, 18907), (237, 18970), (240, 19006), (245, 19021), (249, 19051), (250, 19057), (251, 19069), (253, 19078), (255, 19090),

Gene: Kahlid_18 Start: 16994, Stop: 18727, Start Num: 46

Candidate Starts for Kahlid_18:

(Start: 46 @16994 has 31 MA's), (56, 17063), (72, 17204), (73, 17207), (81, 17252), (85, 17285), (87, 17294), (91, 17330), (99, 17384), (103, 17411), (105, 17423), (109, 17474), (110, 17480), (114, 17513), (132, 17666), (135, 17690), (136, 17699), (141, 17744), (143, 17759), (153, 17837), (167, 17957), (173, 18020), (183, 18092), (187, 18128), (200, 18248), (202, 18254), (204, 18266), (209, 18329), (217, 18416), (220, 18443), (229, 18512), (230, 18527), (232, 18539), (237, 18563), (249, 18641),

Gene: Kingsolomon_19 Start: 17373, Stop: 19136, Start Num: 35

Candidate Starts for Kingsolomon_19:

(Start: 35 @17373 has 43 MA's), (41, 17400), (53, 17463), (61, 17511), (62, 17517), (66, 17553), (73, 17628), (77, 17652), (78, 17658), (87, 17715), (103, 17829), (105, 17841), (119, 17952), (134, 18096), (135, 18108), (139, 18141), (162, 18330), (164, 18336), (172, 18393), (174, 18435), (176, 18444), (179, 18456), (186, 18531), (194, 18600), (196, 18612), (202, 18660), (208, 18726), (216, 18804), (220, 18849), (228, 18906), (237, 18969), (240, 19005), (245, 19020), (249, 19050), (250, 19056), (251, 19068), (253, 19077), (255, 19089),

Gene: KirDoubleO7_17 Start: 17382, Stop: 19145, Start Num: 35

Candidate Starts for KirDoubleO7_17:

(Start: 35 @17382 has 43 MA's), (41, 17409), (53, 17472), (61, 17520), (62, 17526), (66, 17562), (73, 17637), (87, 17724), (103, 17838), (105, 17850), (119, 17961), (134, 18105), (135, 18117), (137, 18135), (139, 18150), (162, 18339), (172, 18402), (173, 18435), (174, 18444), (176, 18453), (179, 18465), (186, 18540), (194, 18609), (196, 18621), (202, 18669), (208, 18735), (216, 18813), (217, 18831), (220, 18858), (227, 18903), (228, 18915), (237, 18978), (240, 19014), (245, 19029), (249, 19059), (250, 19065), (251, 19077), (253, 19086), (255, 19098),

Gene: KleverKiS_28 Start: 22309, Stop: 24087, Start Num: 31

Candidate Starts for KleverKiS_28:

(18, 22129), (Start: 31 @22309 has 3 MA's), (Start: 34 @22324 has 2 MA's), (Start: 40 @22351 has 16 MA's), (Start: 47 @22366 has 26 MA's), (52, 22405), (56, 22435), (57, 22441), (59, 22453), (71, 22558), (72, 22573), (79, 22612), (97, 22735), (98, 22744), (109, 22840), (115, 22882), (116, 22885), (135, 23062), (149, 23173), (153, 23200), (159, 23272), (160, 23281), (161, 23284), (163, 23296), (178, 23416), (179, 23419), (183, 23461), (185, 23491), (187, 23497), (200, 23617), (202, 23623), (246, 23977), (249, 24004), (251, 24022), (253, 24031),

Gene: Kropertea_18 Start: 16595, Stop: 18358, Start Num: 35

Candidate Starts for Kropertea_18:

(Start: 35 @16595 has 43 MA's), (62, 16736), (65, 16766), (72, 16844), (73, 16847), (102, 17045), (103, 17048), (105, 17060), (107, 17081), (121, 17189), (124, 17219), (135, 17327), (136, 17336), (140, 17375), (143, 17396), (162, 17552), (172, 17615), (174, 17657), (176, 17666), (179, 17678), (187, 17756), (202, 17882), (203, 17891), (206, 17915), (215, 18017), (216, 18026), (217, 18044), (220, 18071), (228, 18128), (237, 18191), (240, 18227), (245, 18242), (249, 18272), (253, 18299), (255, 18311), (258, 18332),

Gene: Krypton555_19 Start: 17311, Stop: 19074, Start Num: 35

Candidate Starts for Krypton555_19:

(Start: 35 @17311 has 43 MA's), (41, 17338), (53, 17401), (62, 17455), (66, 17491), (73, 17566), (77, 17590), (78, 17596), (87, 17653), (103, 17767), (105, 17779), (119, 17890), (134, 18034), (135, 18046), (162, 18268), (164, 18274), (172, 18331), (174, 18373), (176, 18382), (179, 18394), (186, 18469), (193, 18535), (196, 18550), (202, 18598), (208, 18664), (216, 18742), (220, 18787), (228, 18844), (237, 18907), (240, 18943), (245, 18958), (249, 18988), (250, 18994), (251, 19006), (253, 19015), (255, 19027),

Gene: Kudrefre_27 Start: 21780, Stop: 23531, Start Num: 43

Candidate Starts for Kudrefre_27:

(27, 21702), (38, 21765), (Start: 43 @21780 has 7 MA's), (50, 21804), (56, 21861), (61, 21888), (63, 21915), (67, 21933), (69, 21942), (70, 21945), (73, 22005), (84, 22080), (89, 22101), (91, 22140), (104, 22230), (107, 22254), (109, 22284), (118, 22341), (122, 22365), (130, 22458), (132, 22473), (133, 22482), (135, 22497), (136, 22506), (139, 22530), (141, 22551), (148, 22605), (151, 22623), (158, 22704), (160, 22716), (165, 22740), (179, 22854), (188, 22962), (192, 22986), (197, 23013), (202, 23058), (205, 23082), (209, 23133), (214, 23181), (216, 23199), (222, 23250), (226, 23286), (232, 23337), (233, 23343), (238, 23367), (241, 23406), (247, 23421), (249, 23448), (254, 23478), (256, 23490), (260, 23520),

Gene: Kumao_28 Start: 21466, Stop: 23190, Start Num: 39

Candidate Starts for Kumao_28:

(Start: 31 @21427 has 3 MA's), (Start: 39 @21466 has 1 MA's), (59, 21556), (79, 21718), (84, 21757), (85, 21760), (95, 21823), (98, 21850), (109, 21946), (115, 21988), (125, 22066), (128, 22108), (135, 22168), (137, 22186), (149, 22279), (160, 22384), (161, 22387), (162, 22396), (169, 22438), (179, 22522), (202, 22726), (204, 22738), (213, 22843), (224, 22942), (228, 22975), (233, 23014), (234, 23020), (242, 23068), (249, 23107), (250, 23113), (260, 23179),

Gene: LeBron_18 Start: 16772, Stop: 18541, Start Num: 35

Candidate Starts for LeBron_18:

(Start: 24 @16709 has 1 MA's), (28, 16730), (30, 16745), (Start: 35 @16772 has 43 MA's), (53, 16865), (61, 16913), (62, 16919), (64, 16946), (65, 16949), (66, 16955), (72, 17027), (75, 17036), (78, 17060), (81, 17075), (84, 17105), (103, 17231), (104, 17240), (106, 17261), (108, 17276), (117, 17345), (123, 17381), (124, 17402), (131, 17471), (135, 17510), (153, 17648), (155, 17660), (162, 17735), (164, 17741), (166, 17759), (172, 17798), (173, 17831), (174, 17840), (176, 17849), (178, 17858), (190, 17981), (196, 18017), (202, 18065), (204, 18077), (208, 18131), (217, 18227), (218, 18245), (219, 18251), (220, 18254), (225, 18287), (228, 18311), (237, 18374), (243, 18416), (249, 18455), (251, 18473), (255, 18494), (258, 18515),

Gene: Lewan_18 Start: 16989, Stop: 18722, Start Num: 46

Candidate Starts for Lewan_18:

(Start: 46 @16989 has 31 MA's), (56, 17058), (72, 17199), (73, 17202), (81, 17247), (85, 17280), (87, 17289), (91, 17325), (99, 17379), (103, 17406), (105, 17418), (109, 17469), (110, 17475), (114, 17508), (132, 17661), (135, 17685), (136, 17694), (141, 17739), (143, 17754), (153, 17832), (173,

18015), (183, 18087), (187, 18123), (200, 18243), (202, 18249), (204, 18261), (209, 18324), (217, 18411), (220, 18438), (229, 18507), (230, 18522), (232, 18534), (237, 18558), (249, 18636),

Gene: LilDestine_18 Start: 16988, Stop: 18721, Start Num: 46

Candidate Starts for LilDestine_18:

(Start: 46 @16988 has 31 MA's), (56, 17057), (72, 17198), (73, 17201), (81, 17246), (85, 17279), (87, 17288), (91, 17324), (99, 17378), (103, 17405), (105, 17417), (109, 17468), (110, 17474), (114, 17507), (132, 17660), (135, 17684), (136, 17693), (141, 17738), (143, 17753), (153, 17831), (167, 17951), (173, 18014), (183, 18086), (187, 18122), (200, 18242), (202, 18248), (204, 18260), (209, 18323), (214, 18374), (217, 18410), (220, 18437), (229, 18506), (230, 18521), (232, 18533), (237, 18557), (249, 18635),

Gene: LilJank_28 Start: 23660, Stop: 25402, Start Num: 43

Candidate Starts for LilJank_28:

(27, 23582), (38, 23645), (Start: 43 @23660 has 7 MA's), (49, 23672), (51, 23690), (56, 23732), (61, 23759), (70, 23816), (73, 23876), (84, 23951), (85, 23954), (87, 23963), (89, 23972), (91, 24011), (92, 24014), (100, 24068), (102, 24089), (107, 24125), (109, 24155), (119, 24215), (120, 24221), (125, 24275), (132, 24344), (133, 24353), (135, 24368), (148, 24476), (150, 24482), (165, 24608), (175, 24701), (179, 24722), (180, 24725), (186, 24797), (188, 24830), (191, 24851), (200, 24920), (202, 24926), (203, 24935), (214, 25052), (215, 25061), (222, 25121), (226, 25157), (228, 25172), (232, 25208), (233, 25214), (241, 25277), (249, 25319), (253, 25346), (256, 25361), (260, 25391),

Gene: Lilbit_49 Start: 27401, Stop: 29113, Start Num: 47

Candidate Starts for Lilbit_49:

(32, 27338), (Start: 47 @27401 has 26 MA's), (58, 27482), (65, 27539), (73, 27620), (75, 27626), (83, 27683), (84, 27695), (87, 27707), (92, 27746), (94, 27761), (104, 27830), (109, 27884), (111, 27893), (129, 28049), (135, 28097), (136, 28106), (137, 28115), (142, 28154), (144, 28169), (153, 28232), (155, 28244), (169, 28361), (170, 28364), (173, 28415), (177, 28442), (179, 28445), (181, 28466), (184, 28508), (199, 28628), (202, 28646), (216, 28790), (220, 28835), (223, 28853), (231, 28937), (233, 28946), (237, 28964), (239, 28985), (249, 29030), (250, 29036), (251, 29048), (254, 29060), (256, 29072), (259, 29096), (260, 29102),

Gene: LilhomieP_27 Start: 22368, Stop: 24104, Start Num: 40

Candidate Starts for LilhomieP_27:

(18, 22146), (Start: 31 @22326 has 3 MA's), (Start: 34 @22341 has 2 MA's), (Start: 40 @22368 has 16 MA's), (Start: 47 @22383 has 26 MA's), (52, 22422), (56, 22452), (57, 22458), (59, 22470), (71, 22575), (72, 22590), (79, 22629), (97, 22752), (98, 22761), (109, 22857), (115, 22899), (116, 22902), (135, 23079), (149, 23190), (153, 23217), (159, 23289), (160, 23298), (161, 23301), (163, 23313), (178, 23433), (179, 23436), (183, 23478), (185, 23508), (187, 23514), (200, 23634), (202, 23640), (246, 23994), (249, 24021), (251, 24039), (253, 24048),

Gene: LittleLaf_50 Start: 27130, Stop: 28842, Start Num: 47

Candidate Starts for LittleLaf_50:

(32, 27067), (Start: 47 @27130 has 26 MA's), (58, 27211), (65, 27268), (73, 27349), (75, 27355), (83, 27412), (84, 27424), (87, 27436), (92, 27475), (94, 27490), (104, 27559), (109, 27613), (111, 27622), (129, 27778), (135, 27826), (136, 27835), (137, 27844), (142, 27883), (144, 27898), (153, 27961), (155, 27973), (169, 28090), (170, 28093), (173, 28144), (177, 28171), (179, 28174), (181, 28195), (184, 28237), (199, 28357), (202, 28375), (216, 28519), (220, 28564), (223, 28582), (231, 28666), (233, 28675), (237, 28693), (239, 28714), (249, 28759), (250, 28765), (251, 28777), (254, 28789), (256, 28801), (259, 28825), (260, 28831),

Gene: LiyuLake_19 Start: 17373, Stop: 19136, Start Num: 35

Candidate Starts for LiyuLake_19:

(Start: 35 @17373 has 43 MA's), (41, 17400), (53, 17463), (61, 17511), (62, 17517), (66, 17553), (73, 17628), (87, 17715), (103, 17829), (105, 17841), (119, 17952), (134, 18096), (135, 18108), (137, 18126), (139, 18141), (162, 18330), (164, 18336), (172, 18393), (174, 18435), (176, 18444), (179, 18456), (186, 18531), (194, 18600), (196, 18612), (202, 18660), (208, 18726), (216, 18804), (220, 18849), (227, 18894), (228, 18906), (237, 18969), (240, 19005), (245, 19020), (249, 19050), (250, 19056), (251, 19068), (253, 19077), (255, 19089),

Gene: Loadrie_18 Start: 17021, Stop: 18754, Start Num: 46

Candidate Starts for Loadrie_18:

(Start: 46 @17021 has 31 MA's), (56, 17090), (72, 17231), (73, 17234), (81, 17279), (85, 17312), (87, 17321), (91, 17357), (99, 17411), (103, 17438), (105, 17450), (109, 17501), (110, 17507), (114, 17540), (132, 17693), (135, 17717), (136, 17726), (141, 17771), (143, 17786), (153, 17864), (167, 17984), (173, 18047), (183, 18119), (187, 18155), (200, 18275), (202, 18281), (204, 18293), (209, 18356), (217, 18443), (220, 18470), (229, 18539), (230, 18554), (232, 18566), (237, 18590), (249, 18668),

Gene: Lolly9_19 Start: 17191, Stop: 18954, Start Num: 35

Candidate Starts for Lolly9_19:

(Start: 35 @17191 has 43 MA's), (41, 17218), (53, 17281), (61, 17329), (62, 17335), (66, 17371), (73, 17446), (77, 17470), (78, 17476), (87, 17533), (103, 17647), (105, 17659), (119, 17770), (134, 17914), (135, 17926), (162, 18148), (164, 18154), (172, 18211), (174, 18253), (176, 18262), (179, 18274), (186, 18349), (193, 18415), (195, 18427), (196, 18430), (202, 18478), (208, 18544), (216, 18622), (220, 18667), (227, 18712), (228, 18724), (237, 18787), (240, 18823), (245, 18838), (249, 18868), (250, 18874), (251, 18886), (253, 18895), (255, 18907),

Gene: Lumos_19 Start: 17370, Stop: 19133, Start Num: 35

Candidate Starts for Lumos_19:

(Start: 35 @17370 has 43 MA's), (41, 17397), (53, 17460), (61, 17508), (62, 17514), (66, 17550), (73, 17625), (77, 17649), (78, 17655), (87, 17712), (103, 17826), (105, 17838), (119, 17949), (134, 18093), (135, 18105), (139, 18138), (162, 18327), (164, 18333), (172, 18390), (174, 18432), (176, 18441), (179, 18453), (186, 18528), (194, 18597), (196, 18609), (202, 18657), (208, 18723), (216, 18801), (220, 18846), (228, 18903), (237, 18966), (240, 19002), (245, 19017), (249, 19047), (250, 19053), (251, 19065), (253, 19074), (255, 19086),

Gene: Lynnae_18 Start: 16977, Stop: 18710, Start Num: 46

Candidate Starts for Lynnae_18:

(Start: 46 @16977 has 31 MA's), (56, 17046), (72, 17187), (73, 17190), (81, 17235), (85, 17268), (87, 17277), (91, 17313), (99, 17367), (103, 17394), (105, 17406), (109, 17457), (110, 17463), (114, 17496), (132, 17649), (135, 17673), (136, 17682), (141, 17727), (143, 17742), (153, 17820), (167, 17940), (173, 18003), (183, 18075), (187, 18111), (200, 18231), (202, 18237), (204, 18249), (209, 18312), (217, 18399), (220, 18426), (229, 18495), (230, 18510), (232, 18522), (237, 18546), (249, 18624),

Gene: MAckerman_18 Start: 16746, Stop: 18515, Start Num: 35

Candidate Starts for MAckerman_18:

(Start: 24 @16683 has 1 MA's), (28, 16704), (30, 16719), (Start: 35 @16746 has 43 MA's), (53, 16839), (61, 16887), (62, 16893), (64, 16920), (65, 16923), (66, 16929), (72, 17001), (75, 17010), (78, 17034), (81, 17049), (84, 17079), (103, 17205), (104, 17214), (106, 17235), (108, 17250), (117, 17319), (123, 17355), (124, 17376), (131, 17445), (135, 17484), (153, 17622), (155, 17634), (162, 17709), (164, 17715), (166, 17733), (172, 17772), (173, 17805), (174, 17814), (176, 17823), (178, 17832), (179, 17835), (190, 17955), (196, 17991), (202, 18039), (204, 18051), (208, 18105), (217, 18201), (218, 18219), (219, 18225), (220, 18228), (225, 18261), (228, 18285), (237, 18348), (243, 18390), (249, 18429), (251, 18447), (255, 18468), (258, 18489),

Gene: Marvin_48 Start: 27400, Stop: 29112, Start Num: 47

Candidate Starts for Marvin_48:

(32, 27337), (Start: 47 @27400 has 26 MA's), (58, 27481), (65, 27538), (73, 27619), (75, 27625), (83, 27682), (84, 27694), (87, 27706), (92, 27745), (94, 27760), (104, 27829), (109, 27883), (111, 27892), (129, 28048), (135, 28096), (136, 28105), (137, 28114), (142, 28153), (144, 28168), (153, 28231), (155, 28243), (169, 28360), (170, 28363), (173, 28414), (177, 28441), (179, 28444), (181, 28465), (184, 28507), (199, 28627), (202, 28645), (216, 28789), (220, 28834), (223, 28852), (231, 28936), (237, 28963), (239, 28984), (249, 29029), (250, 29035), (251, 29047), (254, 29059), (257, 29080), (259, 29095), (260, 29101),

Gene: MaryV_40 Start: 25250, Stop: 27634, Start Num: 1

Candidate Starts for MaryV_40:

(Start: 1 @25250 has 5 MA's), (2, 25367), (3, 25388), (4, 25391), (5, 25421), (6, 25427), (7, 25436), (12, 25526), (13, 25562), (14, 25580), (15, 25607), (16, 25619), (17, 25628), (20, 25691), (21, 25727), (22, 25763), (Start: 24 @25766 has 1 MA's), (25, 25772), (37, 25844), (45, 25874), (55, 25943), (56, 25946), (64, 26033), (68, 26051), (69, 26054), (72, 26114), (79, 26153), (85, 26195), (87, 26204), (88, 26210), (90, 26225), (91, 26240), (98, 26288), (109, 26384), (115, 26426), (116, 26429), (135, 26606), (137, 26624), (139, 26639), (140, 26654), (143, 26675), (146, 26708), (149, 26717), (152, 26747), (156, 26786), (160, 26828), (162, 26840), (163, 26843), (172, 26903), (178, 26963), (183, 27008), (187, 27044), (194, 27110), (200, 27164), (202, 27170), (208, 27236), (227, 27407), (229, 27431), (249, 27551), (252, 27572), (254, 27581), (259, 27617),

Gene: Mendokysei_18 Start: 16790, Stop: 18496, Start Num: 47

Candidate Starts for Mendokysei_18:

(8, 16388), (9, 16403), (10, 16412), (11, 16436), (19, 16583), (23, 16682), (Start: 34 @16745 has 2 MA's), (Start: 47 @16790 has 26 MA's), (56, 16856), (77, 17021), (80, 17036), (85, 17075), (86, 17078), (91, 17120), (92, 17123), (101, 17189), (102, 17195), (127, 17411), (135, 17474), (145, 17564), (153, 17609), (159, 17675), (162, 17696), (163, 17699), (171, 17744), (184, 17885), (201, 18020), (202, 18023), (207, 18062), (220, 18212), (225, 18248), (248, 18392), (249, 18413), (253, 18440), (259, 18479),

Gene: Miley16_18 Start: 16989, Stop: 18722, Start Num: 46

Candidate Starts for Miley16_18:

(Start: 46 @16989 has 31 MA's), (56, 17058), (72, 17199), (73, 17202), (81, 17247), (85, 17280), (87, 17289), (91, 17325), (99, 17379), (103, 17406), (105, 17418), (109, 17469), (110, 17475), (114, 17508), (132, 17661), (135, 17685), (136, 17694), (141, 17739), (143, 17754), (153, 17832), (167, 17952), (173, 18015), (183, 18087), (187, 18123), (200, 18243), (202, 18249), (204, 18261), (209, 18324), (217, 18411), (220, 18438), (229, 18507), (230, 18522), (232, 18534), (237, 18558), (249, 18636),

Gene: MiniLon_19 Start: 17191, Stop: 18954, Start Num: 35

Candidate Starts for MiniLon_19:

(Start: 35 @17191 has 43 MA's), (41, 17218), (53, 17281), (61, 17329), (62, 17335), (66, 17371), (73, 17446), (77, 17470), (78, 17476), (87, 17533), (103, 17647), (105, 17659), (119, 17770), (134, 17914), (135, 17926), (162, 18148), (164, 18154), (172, 18211), (174, 18253), (176, 18262), (179, 18274), (186, 18349), (193, 18415), (195, 18427), (196, 18430), (202, 18478), (208, 18544), (216, 18622), (220, 18667), (227, 18712), (228, 18724), (237, 18787), (240, 18823), (245, 18838), (249, 18868), (250, 18874), (251, 18886), (253, 18895), (255, 18907),

Gene: MiniMac_19 Start: 17192, Stop: 18955, Start Num: 35

Candidate Starts for MiniMac_19:

(Start: 35 @17192 has 43 MA's), (41, 17219), (53, 17282), (61, 17330), (62, 17336), (66, 17372), (73, 17447), (77, 17471), (78, 17477), (87, 17534), (103, 17648), (105, 17660), (119, 17771), (134, 17915), (135, 17927), (162, 18149), (164, 18155), (172, 18212), (174, 18254), (176, 18263), (179, 18275), (186, 18350), (193, 18416), (195, 18428), (196, 18431), (202, 18479), (208, 18545), (216, 18623), (220, 18668), (227, 18713), (228, 18725), (237, 18788), (240, 18824), (245, 18839), (249, 18869), (250, 18875), (251, 18887), (253, 18896), (255, 18908),

Gene: MkaliMitinis3_18 Start: 16989, Stop: 18722, Start Num: 46

Candidate Starts for MkaliMitinis3_18:

(Start: 46 @16989 has 31 MA's), (56, 17058), (72, 17199), (73, 17202), (81, 17247), (85, 17280), (87, 17289), (91, 17325), (99, 17379), (103, 17406), (105, 17418), (109, 17469), (110, 17475), (114, 17508), (132, 17661), (135, 17685), (136, 17694), (141, 17739), (143, 17754), (153, 17832), (167, 17952), (173, 18015), (183, 18087), (187, 18123), (200, 18243), (202, 18249), (204, 18261), (209, 18324), (217, 18411), (220, 18438), (229, 18507), (230, 18522), (232, 18534), (237, 18558), (249, 18636),

Gene: Moostard_19 Start: 17376, Stop: 19139, Start Num: 35

Candidate Starts for Moostard_19:

(Start: 35 @17376 has 43 MA's), (41, 17403), (53, 17466), (61, 17514), (62, 17520), (66, 17556), (73, 17631), (77, 17655), (78, 17661), (87, 17718), (103, 17832), (105, 17844), (119, 17955), (134, 18099), (135, 18111), (139, 18144), (140, 18159), (162, 18333), (164, 18339), (172, 18396), (174, 18438), (176, 18447), (179, 18459), (186, 18534), (194, 18603), (196, 18615), (202, 18663), (208, 18729), (216, 18807), (220, 18852), (228, 18909), (237, 18972), (240, 19008), (245, 19023), (249, 19053), (250, 19059), (251, 19071), (253, 19080), (255, 19092),

Gene: MosMoris_48 Start: 26580, Stop: 28292, Start Num: 47

Candidate Starts for MosMoris_48:

(32, 26517), (Start: 47 @26580 has 26 MA's), (58, 26661), (65, 26718), (73, 26799), (75, 26805), (83, 26862), (84, 26874), (87, 26886), (92, 26925), (94, 26940), (104, 27009), (109, 27063), (111, 27072), (129, 27228), (135, 27276), (136, 27285), (137, 27294), (142, 27333), (144, 27348), (153, 27411), (155, 27423), (169, 27540), (170, 27543), (173, 27594), (177, 27621), (179, 27624), (181, 27645), (184, 27687), (199, 27807), (202, 27825), (216, 27969), (220, 28014), (223, 28032), (231, 28116), (233, 28125), (237, 28143), (239, 28164), (249, 28209), (250, 28215), (251, 28227), (254, 28239), (257, 28260), (259, 28275), (260, 28281),

Gene: MrMagoo_32 Start: 22870, Stop: 24651, Start Num: 31

Candidate Starts for MrMagoo_32:

(Start: 31 @22870 has 3 MA's), (Start: 34 @22885 has 2 MA's), (Start: 40 @22912 has 16 MA's), (54, 22990), (56, 22996), (59, 23014), (79, 23176), (81, 23185), (82, 23200), (96, 23287), (97, 23299), (98, 23308), (109, 23404), (112, 23416), (115, 23446), (116, 23449), (121, 23482), (133, 23611), (135, 23626), (137, 23644), (140, 23674), (159, 23836), (160, 23845), (162, 23857), (164, 23863), (174, 23962), (176, 23971), (178, 23980), (184, 24049), (197, 24142), (200, 24181), (202, 24187), (203, 24196), (246, 24541), (249, 24568), (250, 24574), (257, 24619),

Gene: MsGreen_19 Start: 17373, Stop: 19136, Start Num: 35

Candidate Starts for MsGreen_19:

(Start: 35 @17373 has 43 MA's), (41, 17400), (53, 17463), (61, 17511), (62, 17517), (66, 17553), (73, 17628), (77, 17652), (78, 17658), (87, 17715), (103, 17829), (105, 17841), (119, 17952), (134, 18096), (135, 18108), (139, 18141), (162, 18330), (164, 18336), (172, 18393), (174, 18435), (176, 18444), (179, 18456), (186, 18531), (194, 18600), (196, 18612), (202, 18660), (208, 18726), (216, 18804), (220, 18849), (228, 18906), (237, 18969), (240, 19005), (245, 19020), (249, 19050), (250, 19056), (251, 19068), (253, 19077), (255, 19089),

Gene: Nairb_19 Start: 16980, Stop: 18686, Start Num: 47

Candidate Starts for Nairb_19:

(23, 16872), (26, 16884), (Start: 47 @16980 has 26 MA's), (56, 17046), (68, 17121), (70, 17127), (77, 17211), (85, 17265), (91, 17310), (92, 17313), (101, 17379), (135, 17664), (162, 17886), (184, 18075), (202, 18213), (204, 18225), (220, 18402), (225, 18438), (249, 18603), (253, 18630), (259, 18669), (260, 18675),

Gene: Nanosmite_32 Start: 22784, Stop: 24520, Start Num: 40

Candidate Starts for Nanosmite_32:

(Start: 31 @22742 has 3 MA's), (Start: 34 @22757 has 2 MA's), (Start: 40 @22784 has 16 MA's), (Start: 47 @22799 has 26 MA's), (52, 22838), (56, 22868), (57, 22874), (59, 22886), (79, 23045), (93, 23144), (96, 23156), (97, 23168), (98, 23177), (104, 23219), (109, 23273), (115, 23315), (116, 23318), (132, 23471), (135, 23495), (143, 23564), (149, 23606), (157, 23675), (159, 23705), (160, 23714), (163, 23729), (169, 23768), (174, 23831), (176, 23840), (178, 23849), (184, 23918), (185, 23924), (187, 23930), (200, 24050), (202, 24056), (246, 24410), (249, 24437), (251, 24455), (253, 24464),

Gene: Nette_19 Start: 16799, Stop: 18505, Start Num: 47

Candidate Starts for Nette_19:

(8, 16397), (9, 16412), (10, 16421), (11, 16445), (19, 16592), (23, 16691), (Start: 34 @16754 has 2 MA's), (Start: 47 @16799 has 26 MA's), (56, 16865), (77, 17030), (80, 17045), (85, 17084), (86, 17087), (91, 17129), (92, 17132), (101, 17198), (102, 17204), (127, 17420), (135, 17483), (145, 17573), (153, 17618), (159, 17684), (162, 17705), (163, 17708), (171, 17753), (184, 17894), (201, 18029), (202, 18032), (207, 18071), (220, 18221), (225, 18257), (248, 18401), (249, 18422), (253, 18449), (259, 18488),

Gene: Netyap_18 Start: 16989, Stop: 18722, Start Num: 46

Candidate Starts for Netyap_18:

(Start: 46 @16989 has 31 MA's), (56, 17058), (72, 17199), (73, 17202), (81, 17247), (85, 17280), (87, 17289), (91, 17325), (99, 17379), (103, 17406), (105, 17418), (109, 17469), (110, 17475), (114, 17508), (132, 17661), (135, 17685), (136, 17694), (141, 17739), (143, 17754), (153, 17832), (167, 17952), (173, 18015), (183, 18087), (187, 18123), (200, 18243), (202, 18249), (204, 18261), (209, 18324), (217, 18411), (220, 18438), (229, 18507), (230, 18522), (232, 18534), (237, 18558), (249, 18636),

Gene: Neville_28 Start: 23300, Stop: 25042, Start Num: 43

Candidate Starts for Neville_28:

(27, 23222), (38, 23285), (Start: 43 @23300 has 7 MA's), (49, 23312), (51, 23330), (56, 23372), (61, 23399), (70, 23456), (73, 23516), (84, 23591), (85, 23594), (87, 23603), (89, 23612), (91, 23651), (92, 23654), (100, 23708), (102, 23729), (107, 23765), (109, 23795), (113, 23828), (119, 23855), (125, 23915), (132, 23984), (133, 23993), (135, 24008), (138, 24038), (150, 24122), (165, 24248), (175, 24341), (179, 24362), (180, 24365), (186, 24437), (188, 24470), (191, 24491), (200, 24560), (202, 24566), (203, 24575), (214, 24692), (215, 24701), (222, 24761), (226, 24797), (228, 24812), (232, 24848), (233, 24854), (241, 24917), (249, 24959), (253, 24986), (256, 25001), (260, 25031),

Gene: Nicholas_19 Start: 17373, Stop: 19136, Start Num: 35

Candidate Starts for Nicholas_19:

(Start: 35 @17373 has 43 MA's), (41, 17400), (53, 17463), (61, 17511), (62, 17517), (66, 17553), (73, 17628), (77, 17652), (78, 17658), (87, 17715), (103, 17829), (105, 17841), (119, 17952), (134, 18096), (135, 18108), (139, 18141), (162, 18330), (164, 18336), (172, 18393), (174, 18435), (176, 18444), (179, 18456), (186, 18531), (194, 18600), (196, 18612), (202, 18660), (208, 18726), (216, 18804), (220, 18849), (228, 18906), (237, 18969), (240, 19005), (245, 19020), (249, 19050), (250, 19056), (251, 19068), (253, 19077), (255, 19089),

Gene: Nicholasp3_18 Start: 16994, Stop: 18727, Start Num: 46

Candidate Starts for Nicholasp3_18:

(Start: 46 @16994 has 31 MA's), (56, 17063), (72, 17204), (73, 17207), (81, 17252), (85, 17285), (87, 17294), (91, 17330), (99, 17384), (103, 17411), (105, 17423), (109, 17474), (110, 17480), (114, 17513), (132, 17666), (135, 17690), (136, 17699), (141, 17744), (143, 17759), (153, 17837), (167, 17957), (173, 18020), (183, 18092), (187, 18128), (200, 18248), (202, 18254), (204, 18266), (209, 18329), (217, 18416), (220, 18443), (229, 18512), (230, 18527), (232, 18539), (237, 18563), (249, 18641),

Gene: Octobien14_28 Start: 22738, Stop: 24489, Start Num: 43

Candidate Starts for Octobien14_28:

(38, 22723), (Start: 43 @22738 has 7 MA's), (49, 22759), (50, 22762), (56, 22819), (60, 22840), (61, 22846), (63, 22873), (67, 22891), (69, 22900), (70, 22903), (75, 22969), (76, 22975), (77, 22987), (84, 23038), (85, 23041), (89, 23059), (103, 23179), (108, 23224), (109, 23242), (119, 23302), (120, 23308), (122, 23323), (125, 23362), (130, 23416), (132, 23431), (133, 23440), (135, 23455), (136, 23464), (139, 23488), (141, 23509), (148, 23563), (151, 23581), (152, 23596), (153, 23599), (158, 23662), (160, 23674), (165, 23698), (170, 23731), (179, 23812), (188, 23920), (189, 23929), (192, 23944), (197, 23971), (202, 24016), (210, 24097), (216, 24157), (222, 24208), (226, 24244), (232, 24295), (233, 24301), (236, 24316), (238, 24325), (241, 24364), (247, 24379), (249, 24406), (254, 24436), (256, 24448), (260, 24478),

Gene: OhShagHennessy_18 Start: 16711, Stop: 18480, Start Num: 35

Candidate Starts for OhShagHennessy_18:

(Start: 24 @16648 has 1 MA's), (28, 16669), (30, 16684), (Start: 35 @16711 has 43 MA's), (53, 16804), (61, 16852), (62, 16858), (64, 16885), (66, 16894), (72, 16966), (75, 16975), (78, 16999), (81, 17014), (84, 17044), (103, 17170), (104, 17179), (106, 17200), (108, 17215), (117, 17284), (123, 17320), (124, 17341), (131, 17410), (135, 17449), (153, 17587), (155, 17599), (162, 17674), (164, 17680), (166, 17698), (172, 17737), (173, 17770), (174, 17779), (176, 17788), (178, 17797), (190, 17920), (196, 17956), (202, 18004), (204, 18016), (208, 18070), (217, 18166), (218, 18184), (219, 18190), (220, 18193), (225, 18226), (228, 18250), (237, 18313), (243, 18355), (249, 18394), (251, 18412), (255, 18433), (258, 18454),

Gene: OverPar_18 Start: 17021, Stop: 18754, Start Num: 46

Candidate Starts for OverPar_18:

(Start: 46 @17021 has 31 MA's), (56, 17090), (72, 17231), (73, 17234), (81, 17279), (85, 17312), (87, 17321), (91, 17357), (99, 17411), (103, 17438), (105, 17450), (109, 17501), (110, 17507), (114, 17540), (132, 17693), (135, 17717), (136, 17726), (141, 17771), (143, 17786), (153, 17864), (167, 17984), (173, 18047), (183, 18119), (187, 18155), (200, 18275), (202, 18281), (204, 18293), (209, 18356), (217, 18443), (220, 18470), (229, 18539), (230, 18554), (232, 18566), (237, 18590), (249, 18668),

Gene: PYPDinur_18 Start: 16572, Stop: 18335, Start Num: 35

Candidate Starts for PYPDinur_18:

(Start: 35 @16572 has 43 MA's), (62, 16713), (72, 16821), (73, 16824), (102, 17022), (103, 17025), (105, 17037), (107, 17058), (121, 17166), (124, 17196), (135, 17304), (139, 17337), (140, 17352), (143, 17373), (162, 17529), (172, 17592), (174, 17634), (176, 17643), (179, 17655), (183, 17697), (187, 17733), (202, 17859), (206, 17892), (215, 17994), (216, 18003), (217, 18021), (220, 18048), (228, 18105), (232, 18144), (237, 18168), (240, 18204), (245, 18219), (249, 18249), (253, 18276), (255, 18288), (258, 18309),

Gene: PegLeg_28 Start: 22367, Stop: 24103, Start Num: 40

Candidate Starts for PegLeg_28:

(18, 22145), (Start: 31 @22325 has 3 MA's), (Start: 34 @22340 has 2 MA's), (Start: 40 @22367 has 16 MA's), (Start: 47 @22382 has 26 MA's), (52, 22421), (56, 22451), (57, 22457), (59, 22469), (71, 22574), (72, 22589), (79, 22628), (97, 22751), (98, 22760), (109, 22856), (115, 22898), (116, 22901), (135, 23078), (149, 23189), (153, 23216), (159, 23288), (160, 23297), (161, 23300), (163, 23312), (178, 23432), (179, 23435), (183, 23477), (185, 23507), (187, 23513), (200, 23633), (202, 23639), (246, 23993), (249, 24020), (251, 24038), (253, 24047),

Gene: Poise_50 Start: 26718, Stop: 28430, Start Num: 47

Candidate Starts for Poise_50:

(32, 26655), (Start: 47 @26718 has 26 MA's), (58, 26799), (65, 26856), (73, 26937), (75, 26943), (83, 27000), (84, 27012), (87, 27024), (92, 27063), (94, 27078), (104, 27147), (109, 27201), (111, 27210), (129, 27366), (135, 27414), (136, 27423), (137, 27432), (142, 27471), (144, 27486), (153, 27549), (155, 27561), (169, 27678), (170, 27681), (173, 27732), (177, 27759), (179, 27762), (181, 27783), (184, 27825), (199, 27945), (202, 27963), (216, 28107), (220, 28152), (223, 28170), (231, 28254), (233, 28263), (237, 28281), (239, 28302), (249, 28347), (250, 28353), (251, 28365), (254, 28377), (256, 28389), (259, 28413), (260, 28419),

Gene: Poochiewood_18 Start: 16704, Stop: 18515, Start Num: 28

Candidate Starts for Poochiewood_18:

(Start: 24 @16683 has 1 MA's), (28, 16704), (30, 16719), (Start: 35 @16746 has 43 MA's), (53, 16839), (61, 16887), (62, 16893), (64, 16920), (65, 16923), (66, 16929), (72, 17001), (75, 17010), (78, 17034), (81, 17049), (84, 17079), (103, 17205), (104, 17214), (106, 17235), (108, 17250), (117, 17319), (123, 17355), (124, 17376), (131, 17445), (135, 17484), (153, 17622), (155, 17634), (162, 17709), (164, 17715), (166, 17733), (172, 17772), (173, 17805), (174, 17814), (176, 17823), (178, 17832), (179, 17835), (190, 17955), (196, 17991), (202, 18039), (204, 18051), (208, 18105), (217, 18201), (218, 18219), (219, 18225), (220, 18228), (225, 18261), (228, 18285), (237, 18348), (243, 18390), (249, 18429), (251, 18447), (255, 18468), (258, 18489),

Gene: Pringar_50 Start: 27006, Stop: 28718, Start Num: 47

Candidate Starts for Pringar_50:

(32, 26943), (Start: 47 @27006 has 26 MA's), (58, 27087), (65, 27144), (73, 27225), (75, 27231), (83, 27288), (84, 27300), (87, 27312), (92, 27351), (94, 27366), (104, 27435), (109, 27489), (111, 27498), (129, 27654), (135, 27702), (136, 27711), (137, 27720), (142, 27759), (144, 27774), (153, 27837), (155, 27849), (169, 27966), (170, 27969), (173, 28020), (177, 28047), (179, 28050), (181, 28071), (184, 28113), (199, 28233), (202, 28251), (216, 28395), (220, 28440), (223, 28458), (231, 28542), (233, 28551), (237, 28569), (239, 28590), (249, 28635), (250, 28641), (251, 28653), (254, 28665), (256, 28677), (259, 28701), (260, 28707),

Gene: Quby_18 Start: 16580, Stop: 18343, Start Num: 35

Candidate Starts for Quby_18:

(Start: 35 @16580 has 43 MA's), (62, 16721), (72, 16829), (73, 16832), (102, 17030), (103, 17033), (105, 17045), (107, 17066), (121, 17174), (124, 17204), (135, 17312), (139, 17345), (140, 17360), (143, 17381), (162, 17537), (172, 17600), (174, 17642), (176, 17651), (183, 17705), (187, 17741), (202, 17867), (206, 17900), (215, 18002), (216, 18011), (217, 18029), (220, 18056), (228, 18113), (232, 18152), (237, 18176), (240, 18212), (245, 18227), (249, 18257), (253, 18284), (255, 18296), (258, 18317),

Gene: Rabbitrun_30 Start: 23608, Stop: 25353, Start Num: 43

Candidate Starts for Rabbitrun_30:

(27, 23530), (38, 23593), (Start: 43 @23608 has 7 MA's), (51, 23638), (56, 23680), (73, 23824), (76, 23836), (79, 23860), (84, 23899), (85, 23902), (89, 23920), (100, 24016), (102, 24037), (107, 24073), (109, 24103), (113, 24136), (119, 24163), (125, 24223), (132, 24292), (133, 24301), (135, 24316), (138, 24346), (152, 24454), (159, 24526), (160, 24535), (179, 24673), (180, 24676), (183, 24715),

(186, 24748), (188, 24781), (189, 24790), (191, 24802), (197, 24832), (200, 24871), (202, 24877), (203, 24886), (215, 25012), (222, 25072), (226, 25108), (228, 25123), (232, 25159), (233, 25165), (235, 25174), (241, 25228), (249, 25270), (253, 25297), (256, 25312), (258, 25330), (260, 25342),

Gene: Raela_50 Start: 27273, Stop: 28985, Start Num: 47

Candidate Starts for Raela_50:

(32, 27210), (Start: 47 @27273 has 26 MA's), (58, 27354), (65, 27411), (73, 27492), (75, 27498), (83, 27555), (84, 27567), (87, 27579), (92, 27618), (94, 27633), (104, 27702), (109, 27756), (111, 27765), (129, 27921), (135, 27969), (137, 27987), (142, 28026), (144, 28041), (153, 28104), (155, 28116), (169, 28233), (170, 28236), (173, 28287), (177, 28314), (179, 28317), (181, 28338), (184, 28380), (199, 28500), (202, 28518), (216, 28662), (220, 28707), (223, 28725), (231, 28809), (237, 28836), (239, 28857), (249, 28902), (250, 28908), (251, 28920), (254, 28932), (256, 28944), (259, 28968), (260, 28974),

Gene: Red305_19 Start: 17373, Stop: 19136, Start Num: 35

Candidate Starts for Red305_19:

(Start: 35 @17373 has 43 MA's), (41, 17400), (53, 17463), (61, 17511), (62, 17517), (66, 17553), (73, 17628), (77, 17652), (78, 17658), (87, 17715), (103, 17829), (105, 17841), (119, 17952), (134, 18096), (135, 18108), (139, 18141), (162, 18330), (164, 18336), (172, 18393), (174, 18435), (176, 18444), (179, 18456), (186, 18531), (194, 18600), (196, 18612), (202, 18660), (208, 18726), (216, 18804), (220, 18849), (228, 18906), (237, 18969), (240, 19005), (245, 19020), (249, 19050), (250, 19056), (251, 19068), (253, 19077), (255, 19089),

Gene: RedRaider77_50 Start: 27174, Stop: 28886, Start Num: 47

Candidate Starts for RedRaider77_50:

(32, 27111), (Start: 47 @27174 has 26 MA's), (58, 27255), (65, 27312), (73, 27393), (75, 27399), (83, 27456), (84, 27468), (87, 27480), (92, 27519), (94, 27534), (104, 27603), (109, 27657), (111, 27666), (129, 27822), (135, 27870), (136, 27879), (137, 27888), (142, 27927), (144, 27942), (153, 28005), (155, 28017), (169, 28134), (170, 28137), (173, 28188), (177, 28215), (179, 28218), (181, 28239), (184, 28281), (199, 28401), (202, 28419), (216, 28563), (220, 28608), (223, 28626), (231, 28710), (233, 28719), (237, 28737), (239, 28758), (249, 28803), (250, 28809), (251, 28821), (254, 28833), (257, 28854), (259, 28869), (260, 28875),

Gene: Reindeer_26 Start: 22192, Stop: 23928, Start Num: 42

Candidate Starts for Reindeer_26:

(Start: 42 @22192 has 1 MA's), (Start: 47 @22207 has 26 MA's), (56, 22276), (59, 22294), (64, 22333), (71, 22399), (72, 22414), (79, 22453), (87, 22504), (90, 22525), (97, 22576), (98, 22585), (105, 22630), (108, 22663), (109, 22681), (115, 22723), (116, 22726), (127, 22837), (135, 22903), (149, 23014), (153, 23041), (157, 23083), (159, 23113), (160, 23122), (161, 23125), (162, 23134), (163, 23137), (171, 23182), (176, 23248), (178, 23257), (179, 23260), (183, 23302), (185, 23332), (187, 23338), (194, 23404), (200, 23458), (202, 23464), (208, 23530), (246, 23818), (249, 23845), (251, 23863), (253, 23872), (255, 23884), (259, 23911),

Gene: Rey_32 Start: 23117, Stop: 24883, Start Num: 34

Candidate Starts for Rey_32:

(Start: 31 @23102 has 3 MA's), (Start: 34 @23117 has 2 MA's), (Start: 40 @23144 has 16 MA's), (54, 23222), (56, 23228), (57, 23234), (59, 23246), (72, 23369), (79, 23408), (81, 23417), (82, 23432), (96, 23519), (97, 23531), (98, 23540), (105, 23585), (109, 23636), (115, 23678), (116, 23681), (121, 23714), (125, 23756), (126, 23765), (133, 23843), (135, 23858), (137, 23876), (159, 24068), (160, 24077), (162, 24089), (164, 24095), (174, 24194), (176, 24203), (178, 24212), (182, 24242), (184, 24281), (197, 24374), (200, 24413), (202, 24419), (203, 24428), (244, 24767), (246, 24773), (249, 24800), (257, 24851),

Gene: RonRayGun_19 Start: 16980, Stop: 18686, Start Num: 47

Candidate Starts for RonRayGun_19:

(23, 16872), (26, 16884), (Start: 47 @16980 has 26 MA's), (56, 17046), (68, 17121), (70, 17127), (77, 17211), (85, 17265), (91, 17310), (92, 17313), (101, 17379), (135, 17664), (162, 17886), (184, 18075), (202, 18213), (204, 18225), (220, 18402), (225, 18438), (249, 18603), (253, 18630), (259, 18669), (260, 18675),

Gene: Rose5_18 Start: 16746, Stop: 18515, Start Num: 35

Candidate Starts for Rose5_18:

(Start: 24 @16683 has 1 MA's), (28, 16704), (30, 16719), (Start: 35 @16746 has 43 MA's), (53, 16839), (61, 16887), (62, 16893), (64, 16920), (65, 16923), (66, 16929), (72, 17001), (75, 17010), (78, 17034), (81, 17049), (84, 17079), (103, 17205), (104, 17214), (106, 17235), (108, 17250), (117, 17319), (123, 17355), (124, 17376), (131, 17445), (135, 17484), (153, 17622), (155, 17634), (162, 17709), (164, 17715), (166, 17733), (172, 17772), (173, 17805), (174, 17814), (176, 17823), (178, 17832), (179, 17835), (190, 17955), (196, 17991), (202, 18039), (204, 18051), (208, 18105), (217, 18201), (218, 18219), (219, 18225), (220, 18228), (225, 18261), (228, 18285), (237, 18348), (243, 18390), (249, 18429), (251, 18447), (255, 18468), (258, 18489),

Gene: RoseMarie_29 Start: 24200, Stop: 25966, Start Num: 33

Candidate Starts for RoseMarie_29:

(29, 24179), (33, 24200), (Start: 34 @24212 has 2 MA's), (52, 24284), (56, 24314), (57, 24320), (59, 24332), (63, 24365), (71, 24437), (72, 24452), (79, 24491), (97, 24614), (98, 24623), (104, 24665), (109, 24719), (112, 24731), (115, 24761), (116, 24764), (127, 24875), (131, 24902), (135, 24941), (149, 25052), (153, 25079), (159, 25151), (160, 25160), (161, 25163), (163, 25175), (176, 25286), (178, 25295), (179, 25298), (183, 25340), (185, 25370), (187, 25376), (200, 25496), (202, 25502), (246, 25856), (249, 25883), (251, 25901), (253, 25910),

Gene: Rossetti_18 Start: 17009, Stop: 18742, Start Num: 46

Candidate Starts for Rossetti_18:

(Start: 46 @17009 has 31 MA's), (56, 17078), (72, 17219), (73, 17222), (78, 17252), (81, 17267), (85, 17300), (87, 17309), (91, 17345), (99, 17399), (103, 17426), (109, 17489), (110, 17495), (114, 17528), (132, 17681), (135, 17705), (136, 17714), (141, 17759), (143, 17774), (153, 17852), (167, 17972), (173, 18035), (183, 18107), (187, 18143), (200, 18263), (202, 18269), (204, 18281), (209, 18344), (217, 18431), (220, 18458), (229, 18527), (230, 18542), (237, 18578), (249, 18656), (251, 18674),

Gene: Rumpelstiltskin_18 Start: 16995, Stop: 18728, Start Num: 46

Candidate Starts for Rumpelstiltskin_18:

(Start: 46 @16995 has 31 MA's), (56, 17064), (72, 17205), (73, 17208), (81, 17253), (85, 17286), (87, 17295), (91, 17331), (99, 17385), (103, 17412), (105, 17424), (109, 17475), (110, 17481), (114, 17514), (132, 17667), (135, 17691), (136, 17700), (141, 17745), (143, 17760), (153, 17838), (167, 17958), (173, 18021), (183, 18093), (187, 18129), (200, 18249), (202, 18255), (204, 18267), (209, 18330), (214, 18381), (217, 18417), (220, 18444), (229, 18513), (230, 18528), (232, 18540), (237, 18564), (249, 18642),

Gene: Samty_19 Start: 17376, Stop: 19139, Start Num: 35

Candidate Starts for Samty_19:

(Start: 35 @17376 has 43 MA's), (41, 17403), (53, 17466), (61, 17514), (62, 17520), (66, 17556), (73, 17631), (77, 17655), (78, 17661), (87, 17718), (103, 17832), (105, 17844), (119, 17955), (134, 18099), (135, 18111), (139, 18144), (140, 18159), (162, 18333), (164, 18339), (172, 18396), (174, 18438), (176, 18447), (179, 18459), (186, 18534), (194, 18603), (196, 18615), (202, 18663), (208, 18729), (216, 18807), (220, 18852), (228, 18909), (237, 18972), (240, 19008), (245, 19023), (249, 19053), (250, 19059), (251, 19071), (253, 19080), (255, 19092),

Gene: Sarshaun_18 Start: 17022, Stop: 18755, Start Num: 46

Candidate Starts for Sarshaun_18:

(Start: 46 @17022 has 31 MA's), (56, 17091), (72, 17232), (73, 17235), (81, 17280), (85, 17313), (87, 17322), (91, 17358), (99, 17412), (103, 17439), (105, 17451), (109, 17502), (110, 17508), (114, 17541), (132, 17694), (135, 17718), (136, 17727), (141, 17772), (143, 17787), (153, 17865), (167, 17985), (173, 18048), (183, 18120), (187, 18156), (200, 18276), (202, 18282), (204, 18294), (209, 18357), (217, 18444), (220, 18471), (229, 18540), (230, 18555), (232, 18567), (237, 18591), (249, 18669),

Gene: Sephiroth_28 Start: 21951, Stop: 23702, Start Num: 43

Candidate Starts for Sephiroth_28:

(38, 21936), (Start: 43 @21951 has 7 MA's), (49, 21972), (50, 21975), (56, 22032), (60, 22053), (61, 22059), (63, 22086), (67, 22104), (69, 22113), (70, 22116), (73, 22176), (84, 22251), (89, 22272), (91, 22311), (109, 22455), (119, 22515), (120, 22521), (122, 22536), (125, 22575), (132, 22644), (133, 22653), (135, 22668), (136, 22677), (139, 22701), (141, 22722), (148, 22776), (151, 22794), (158, 22875), (160, 22887), (165, 22911), (179, 23025), (188, 23133), (192, 23157), (197, 23184), (202, 23229), (209, 23304), (210, 23310), (216, 23370), (222, 23421), (226, 23457), (232, 23508), (233, 23514), (238, 23538), (241, 23577), (247, 23592), (249, 23619), (254, 23649), (256, 23661), (260, 23691),

Gene: Sheng711_18 Start: 16572, Stop: 18335, Start Num: 35

Candidate Starts for Sheng711_18:

(Start: 35 @16572 has 43 MA's), (62, 16713), (72, 16821), (73, 16824), (102, 17022), (103, 17025), (105, 17037), (107, 17058), (121, 17166), (124, 17196), (135, 17304), (139, 17337), (140, 17352), (143, 17373), (162, 17529), (172, 17592), (174, 17634), (176, 17643), (179, 17655), (183, 17697), (187, 17733), (202, 17859), (206, 17892), (215, 17994), (216, 18003), (217, 18021), (220, 18048), (228, 18105), (232, 18144), (237, 18168), (240, 18204), (245, 18219), (249, 18249), (253, 18276), (255, 18288), (258, 18309),

Gene: Silverleaf_18 Start: 16746, Stop: 18515, Start Num: 35

Candidate Starts for Silverleaf_18:

(Start: 24 @16683 has 1 MA's), (28, 16704), (30, 16719), (Start: 35 @16746 has 43 MA's), (53, 16839), (61, 16887), (62, 16893), (64, 16920), (65, 16923), (66, 16929), (72, 17001), (75, 17010), (78, 17034), (81, 17049), (84, 17079), (103, 17205), (104, 17214), (106, 17235), (108, 17250), (117, 17319), (123, 17355), (124, 17376), (131, 17445), (135, 17484), (153, 17622), (155, 17634), (162, 17709), (164, 17715), (166, 17733), (172, 17772), (173, 17805), (174, 17814), (176, 17823), (178, 17832), (179, 17835), (190, 17955), (196, 17991), (202, 18039), (204, 18051), (208, 18105), (217, 18201), (218, 18219), (219, 18225), (220, 18228), (225, 18261), (228, 18285), (237, 18348), (243, 18390), (249, 18429), (251, 18447), (255, 18468), (258, 18489),

Gene: Skinny_29 Start: 22368, Stop: 24104, Start Num: 40

Candidate Starts for Skinny_29:

(18, 22146), (Start: 31 @22326 has 3 MA's), (Start: 34 @22341 has 2 MA's), (Start: 40 @22368 has 16 MA's), (Start: 47 @22383 has 26 MA's), (52, 22422), (56, 22452), (57, 22458), (59, 22470), (71, 22575), (72, 22590), (79, 22629), (97, 22752), (98, 22761), (109, 22857), (115, 22899), (116, 22902), (135, 23079), (149, 23190), (153, 23217), (159, 23289), (160, 23298), (161, 23301), (163, 23313), (178, 23433), (179, 23436), (183, 23478), (185, 23508), (187, 23514), (200, 23634), (202, 23640), (246, 23994), (249, 24021), (251, 24039), (253, 24048),

Gene: SlimJimmy_27 Start: 22354, Stop: 24090, Start Num: 40

Candidate Starts for SlimJimmy_27:

(18, 22132), (Start: 31 @22312 has 3 MA's), (Start: 34 @22327 has 2 MA's), (Start: 40 @22354 has 16 MA's), (Start: 47 @22369 has 26 MA's), (52, 22408), (56, 22438), (57, 22444), (59, 22456), (71,

22561), (72, 22576), (79, 22615), (97, 22738), (98, 22747), (109, 22843), (115, 22885), (116, 22888), (135, 23065), (149, 23176), (153, 23203), (159, 23275), (160, 23284), (161, 23287), (163, 23299), (178, 23419), (179, 23422), (183, 23464), (185, 23494), (187, 23500), (200, 23620), (202, 23626), (246, 23980), (249, 24007), (251, 24025), (253, 24034),

Gene: Snenia_19 Start: 17374, Stop: 19137, Start Num: 35

Candidate Starts for Snenia_19:

(Start: 35 @17374 has 43 MA's), (41, 17401), (53, 17464), (61, 17512), (62, 17518), (66, 17554), (73, 17629), (77, 17653), (78, 17659), (87, 17716), (103, 17830), (105, 17842), (119, 17953), (134, 18097), (135, 18109), (139, 18142), (162, 18331), (164, 18337), (172, 18394), (174, 18436), (176, 18445), (179, 18457), (186, 18532), (194, 18601), (196, 18613), (202, 18661), (208, 18727), (216, 18805), (220, 18850), (228, 18907), (237, 18970), (240, 19006), (245, 19021), (249, 19051), (250, 19057), (251, 19069), (253, 19078), (255, 19090),

Gene: SoJulia_18 Start: 16988, Stop: 18721, Start Num: 46

Candidate Starts for SoJulia_18:

(Start: 46 @16988 has 31 MA's), (56, 17057), (72, 17198), (73, 17201), (81, 17246), (85, 17279), (87, 17288), (91, 17324), (99, 17378), (103, 17405), (105, 17417), (109, 17468), (110, 17474), (114, 17507), (132, 17660), (135, 17684), (136, 17693), (141, 17738), (143, 17753), (153, 17831), (167, 17951), (173, 18014), (183, 18086), (187, 18122), (200, 18242), (202, 18248), (204, 18260), (209, 18323), (217, 18410), (220, 18437), (229, 18506), (230, 18521), (232, 18533), (237, 18557), (249, 18635),

Gene: Soap141_18 Start: 17022, Stop: 18755, Start Num: 46

Candidate Starts for Soap141_18:

(Start: 46 @17022 has 31 MA's), (56, 17091), (72, 17232), (73, 17235), (81, 17280), (85, 17313), (87, 17322), (91, 17358), (99, 17412), (103, 17439), (105, 17451), (109, 17502), (110, 17508), (114, 17541), (132, 17694), (135, 17718), (136, 17727), (141, 17772), (143, 17787), (153, 17865), (167, 17985), (173, 18048), (183, 18120), (187, 18156), (200, 18276), (202, 18282), (204, 18294), (209, 18357), (217, 18444), (220, 18471), (229, 18540), (230, 18555), (232, 18567), (237, 18591), (249, 18669),

Gene: Sparky_16 Start: 16144, Stop: 17859, Start Num: 44

Candidate Starts for Sparky_16:

(Start: 44 @16144 has 2 MA's), (48, 16153), (65, 16279), (72, 16357), (74, 16363), (75, 16366), (80, 16399), (87, 16447), (88, 16453), (97, 16519), (101, 16552), (104, 16570), (115, 16666), (128, 16780), (135, 16837), (137, 16855), (141, 16891), (153, 16972), (154, 16981), (162, 17059), (168, 17095), (179, 17185), (187, 17260), (202, 17386), (212, 17476), (221, 17578), (237, 17707), (247, 17749), (249, 17776), (253, 17803), (255, 17815), (256, 17818), (259, 17842),

Gene: Syleon_28 Start: 21873, Stop: 23624, Start Num: 43

Candidate Starts for Syleon_28:

(38, 21858), (Start: 43 @21873 has 7 MA's), (49, 21894), (50, 21897), (56, 21954), (60, 21975), (61, 21981), (63, 22008), (67, 22026), (69, 22035), (70, 22038), (73, 22098), (84, 22173), (89, 22194), (91, 22233), (109, 22377), (119, 22437), (120, 22443), (122, 22458), (125, 22497), (132, 22566), (133, 22575), (135, 22590), (136, 22599), (139, 22623), (141, 22644), (148, 22698), (151, 22716), (158, 22797), (160, 22809), (165, 22833), (179, 22947), (188, 23055), (192, 23079), (197, 23106), (202, 23151), (209, 23226), (210, 23232), (216, 23292), (222, 23343), (226, 23379), (232, 23430), (233, 23436), (238, 23460), (241, 23499), (247, 23514), (249, 23541), (254, 23571), (256, 23583), (260, 23613),

Gene: Tesla_49 Start: 27023, Stop: 28735, Start Num: 47

Candidate Starts for Tesla_49:

(32, 26960), (Start: 47 @27023 has 26 MA's), (58, 27104), (65, 27161), (73, 27242), (75, 27248), (83, 27305), (84, 27317), (87, 27329), (92, 27368), (94, 27383), (104, 27452), (109, 27506), (111, 27515), (129, 27671), (135, 27719), (136, 27728), (137, 27737), (142, 27776), (144, 27791), (153, 27854), (155, 27866), (169, 27983), (170, 27986), (173, 28037), (177, 28064), (179, 28067), (181, 28088), (184, 28130), (199, 28250), (202, 28268), (216, 28412), (220, 28457), (223, 28475), (231, 28559), (233, 28568), (237, 28586), (239, 28607), (249, 28652), (250, 28658), (251, 28670), (254, 28682), (257, 28703), (259, 28718), (260, 28724),

Gene: Tourach_18 Start: 16987, Stop: 18720, Start Num: 46

Candidate Starts for Tourach_18:

(Start: 46 @16987 has 31 MA's), (56, 17056), (72, 17197), (73, 17200), (78, 17230), (81, 17245), (85, 17278), (91, 17323), (99, 17377), (103, 17404), (105, 17416), (109, 17467), (110, 17473), (114, 17506), (132, 17659), (135, 17683), (136, 17692), (141, 17737), (147, 17788), (167, 17950), (173, 18013), (183, 18085), (187, 18121), (198, 18220), (200, 18241), (202, 18247), (204, 18259), (209, 18322), (217, 18409), (220, 18436), (222, 18442), (225, 18469), (227, 18481), (229, 18505), (230, 18520), (237, 18556), (249, 18634), (251, 18652),

Gene: TpudiCK_29 Start: 22325, Stop: 24103, Start Num: 31

Candidate Starts for TpudiCK_29:

(18, 22145), (Start: 31 @22325 has 3 MA's), (Start: 34 @22340 has 2 MA's), (Start: 40 @22367 has 16 MA's), (Start: 47 @22382 has 26 MA's), (52, 22421), (56, 22451), (57, 22457), (59, 22469), (71, 22574), (72, 22589), (79, 22628), (97, 22751), (98, 22760), (109, 22856), (115, 22898), (116, 22901), (135, 23078), (149, 23189), (153, 23216), (159, 23288), (160, 23297), (161, 23300), (163, 23312), (178, 23432), (179, 23435), (183, 23477), (185, 23507), (187, 23513), (200, 23633), (202, 23639), (246, 23993), (249, 24020), (251, 24038), (253, 24047),

Gene: Trax_28 Start: 23606, Stop: 25348, Start Num: 43

Candidate Starts for Trax_28:

(27, 23528), (38, 23591), (Start: 43 @23606 has 7 MA's), (49, 23618), (51, 23636), (56, 23678), (61, 23705), (70, 23762), (73, 23822), (84, 23897), (85, 23900), (87, 23909), (89, 23918), (91, 23957), (92, 23960), (100, 24014), (102, 24035), (107, 24071), (109, 24101), (119, 24161), (120, 24167), (125, 24221), (132, 24290), (133, 24299), (135, 24314), (148, 24422), (150, 24428), (165, 24554), (175, 24647), (179, 24668), (180, 24671), (186, 24743), (188, 24776), (191, 24797), (200, 24866), (202, 24872), (203, 24881), (214, 24998), (215, 25007), (222, 25067), (226, 25103), (228, 25118), (232, 25154), (233, 25160), (241, 25223), (249, 25265), (253, 25292), (256, 25307), (260, 25337),

Gene: TriFive_19 Start: 17373, Stop: 19136, Start Num: 35

Candidate Starts for TriFive_19:

(Start: 35 @17373 has 43 MA's), (41, 17400), (53, 17463), (61, 17511), (62, 17517), (66, 17553), (73, 17628), (77, 17652), (78, 17658), (87, 17715), (103, 17829), (105, 17841), (119, 17952), (134, 18096), (135, 18108), (139, 18141), (162, 18330), (164, 18336), (172, 18393), (174, 18435), (176, 18444), (179, 18456), (186, 18531), (194, 18600), (196, 18612), (202, 18660), (208, 18726), (216, 18804), (220, 18849), (228, 18906), (237, 18969), (240, 19005), (245, 19020), (249, 19050), (250, 19056), (251, 19068), (253, 19077), (255, 19089),

Gene: TyDawg_28 Start: 22368, Stop: 24104, Start Num: 40

Candidate Starts for TyDawg_28:

(18, 22146), (Start: 31 @22326 has 3 MA's), (Start: 34 @22341 has 2 MA's), (Start: 40 @22368 has 16 MA's), (Start: 47 @22383 has 26 MA's), (52, 22422), (56, 22452), (57, 22458), (59, 22470), (71, 22575), (72, 22590), (79, 22629), (97, 22752), (98, 22761), (109, 22857), (115, 22899), (116, 22902), (135, 23079), (149, 23190), (153, 23217), (159, 23289), (160, 23298), (161, 23301), (163, 23313), (178, 23433), (179, 23436), (183, 23478), (185, 23508), (187, 23514), (200, 23634), (202, 23640), (246, 23994), (249, 24021), (251, 24039), (253, 24048),

Gene: Tyson_18 Start: 16746, Stop: 18515, Start Num: 35

Candidate Starts for Tyson_18:

(Start: 24 @16683 has 1 MA's), (28, 16704), (30, 16719), (Start: 35 @16746 has 43 MA's), (53, 16839), (61, 16887), (62, 16893), (64, 16920), (65, 16923), (66, 16929), (72, 17001), (75, 17010), (78, 17034), (81, 17049), (84, 17079), (103, 17205), (104, 17214), (106, 17235), (108, 17250), (117, 17319), (123, 17355), (124, 17376), (131, 17445), (135, 17484), (153, 17622), (155, 17634), (162, 17709), (164, 17715), (166, 17733), (172, 17772), (173, 17805), (174, 17814), (176, 17823), (178, 17832), (179, 17835), (190, 17955), (196, 17991), (202, 18039), (204, 18051), (208, 18105), (217, 18201), (218, 18219), (219, 18225), (220, 18228), (225, 18261), (228, 18285), (237, 18348), (243, 18390), (249, 18429), (251, 18447), (255, 18468), (258, 18489),

Gene: UPIE_18 Start: 16744, Stop: 18513, Start Num: 35

Candidate Starts for UPIE_18:

(Start: 24 @16681 has 1 MA's), (28, 16702), (30, 16717), (Start: 35 @16744 has 43 MA's), (53, 16837), (61, 16885), (62, 16891), (64, 16918), (65, 16921), (66, 16927), (72, 16999), (75, 17008), (78, 17032), (81, 17047), (84, 17077), (103, 17203), (104, 17212), (106, 17233), (108, 17248), (117, 17317), (123, 17353), (124, 17374), (131, 17443), (135, 17482), (153, 17620), (155, 17632), (162, 17707), (164, 17713), (166, 17731), (172, 17770), (173, 17803), (174, 17812), (176, 17821), (178, 17830), (179, 17833), (190, 17953), (196, 17989), (202, 18037), (204, 18049), (208, 18103), (217, 18199), (218, 18217), (219, 18223), (220, 18226), (225, 18259), (228, 18283), (237, 18346), (243, 18388), (249, 18427), (251, 18445), (255, 18466), (258, 18487),

Gene: Underpass_18 Start: 16994, Stop: 18727, Start Num: 46

Candidate Starts for Underpass_18:

(Start: 46 @16994 has 31 MA's), (56, 17063), (72, 17204), (73, 17207), (81, 17252), (85, 17285), (87, 17294), (91, 17330), (99, 17384), (103, 17411), (105, 17423), (109, 17474), (110, 17480), (114, 17513), (132, 17666), (135, 17690), (136, 17699), (141, 17744), (143, 17759), (153, 17837), (167, 17957), (173, 18020), (183, 18092), (187, 18128), (200, 18248), (202, 18254), (204, 18266), (209, 18329), (217, 18416), (220, 18443), (229, 18512), (230, 18527), (232, 18539), (237, 18563), (249, 18641),

Gene: VasuNzinga_50 Start: 26580, Stop: 28292, Start Num: 47

Candidate Starts for VasuNzinga_50:

(32, 26517), (Start: 47 @26580 has 26 MA's), (58, 26661), (65, 26718), (73, 26799), (75, 26805), (83, 26862), (84, 26874), (87, 26886), (92, 26925), (94, 26940), (104, 27009), (109, 27063), (111, 27072), (129, 27228), (135, 27276), (136, 27285), (137, 27294), (142, 27333), (144, 27348), (153, 27411), (155, 27423), (169, 27540), (170, 27543), (173, 27594), (177, 27621), (179, 27624), (181, 27645), (184, 27687), (199, 27807), (202, 27825), (216, 27969), (220, 28014), (223, 28032), (231, 28116), (233, 28125), (237, 28143), (239, 28164), (249, 28209), (250, 28215), (251, 28227), (254, 28239), (256, 28251), (259, 28275), (260, 28281),

Gene: Vetric_18 Start: 16995, Stop: 18728, Start Num: 46

Candidate Starts for Vetric_18:

(Start: 46 @16995 has 31 MA's), (56, 17064), (72, 17205), (73, 17208), (81, 17253), (85, 17286), (87, 17295), (91, 17331), (99, 17385), (103, 17412), (105, 17424), (109, 17475), (110, 17481), (114, 17514), (132, 17667), (135, 17691), (136, 17700), (141, 17745), (143, 17760), (153, 17838), (167, 17958), (173, 18021), (183, 18093), (187, 18129), (200, 18249), (202, 18255), (204, 18267), (209, 18330), (214, 18381), (217, 18417), (220, 18444), (229, 18513), (230, 18528), (232, 18540), (237, 18564), (249, 18642),

Gene: Wamburgxpress_18 Start: 16759, Stop: 18528, Start Num: 35

Candidate Starts for Wamburgxpress_18:

(Start: 24 @16696 has 1 MA's), (28, 16717), (30, 16732), (Start: 35 @16759 has 43 MA's), (53, 16852), (61, 16900), (62, 16906), (64, 16933), (65, 16936), (66, 16942), (72, 17014), (75, 17023), (78, 17047), (81, 17062), (84, 17092), (103, 17218), (104, 17227), (106, 17248), (108, 17263), (117, 17332), (123, 17368), (124, 17389), (131, 17458), (135, 17497), (153, 17635), (155, 17647), (162, 17722), (164, 17728), (166, 17746), (172, 17785), (173, 17818), (174, 17827), (176, 17836), (178, 17845), (190, 17968), (196, 18004), (202, 18052), (204, 18064), (208, 18118), (217, 18214), (218, 18232), (219, 18238), (220, 18241), (225, 18274), (228, 18298), (237, 18361), (243, 18403), (249, 18442), (251, 18460), (255, 18481), (258, 18502),

Gene: Whirlwind_20 Start: 17130, Stop: 18893, Start Num: 35

Candidate Starts for Whirlwind_20:

(Start: 35 @17130 has 43 MA's), (41, 17157), (53, 17220), (62, 17274), (66, 17310), (73, 17385), (78, 17415), (81, 17430), (87, 17472), (103, 17586), (105, 17598), (119, 17709), (134, 17853), (135, 17865), (162, 18087), (164, 18093), (172, 18150), (174, 18192), (176, 18201), (179, 18213), (186, 18288), (193, 18354), (196, 18369), (202, 18417), (208, 18483), (216, 18561), (220, 18606), (228, 18663), (237, 18726), (240, 18762), (245, 18777), (249, 18807), (250, 18813), (251, 18825), (253, 18834), (255, 18846),

Gene: Whitty_19 Start: 16980, Stop: 18686, Start Num: 47

Candidate Starts for Whitty_19:

(23, 16872), (26, 16884), (Start: 47 @16980 has 26 MA's), (56, 17046), (68, 17121), (70, 17127), (77, 17211), (85, 17265), (91, 17310), (92, 17313), (101, 17379), (135, 17664), (162, 17886), (184, 18075), (202, 18213), (204, 18225), (220, 18402), (225, 18438), (249, 18603), (253, 18630), (259, 18669), (260, 18675),

Gene: Wigglewobble_18 Start: 17021, Stop: 18754, Start Num: 46

Candidate Starts for Wigglewobble_18:

(Start: 46 @17021 has 31 MA's), (56, 17090), (72, 17231), (73, 17234), (81, 17279), (85, 17312), (87, 17321), (91, 17357), (99, 17411), (103, 17438), (105, 17450), (109, 17501), (110, 17507), (114, 17540), (132, 17693), (135, 17717), (136, 17726), (141, 17771), (143, 17786), (153, 17864), (167, 17984), (173, 18047), (183, 18119), (187, 18155), (200, 18275), (202, 18281), (204, 18293), (209, 18356), (217, 18443), (220, 18470), (229, 18539), (230, 18554), (232, 18566), (237, 18590), (249, 18668),

Gene: Wildcat_40 Start: 25260, Stop: 27644, Start Num: 1

Candidate Starts for Wildcat_40:

(Start: 1 @25260 has 5 MA's), (2, 25377), (3, 25398), (4, 25401), (5, 25431), (6, 25437), (7, 25446), (12, 25536), (13, 25572), (14, 25590), (15, 25617), (16, 25629), (17, 25638), (20, 25701), (21, 25737), (22, 25773), (Start: 24 @25776 has 1 MA's), (25, 25782), (37, 25854), (45, 25884), (55, 25953), (56, 25956), (64, 26043), (68, 26061), (69, 26064), (72, 26124), (79, 26163), (85, 26205), (87, 26214), (88, 26220), (90, 26235), (91, 26250), (98, 26298), (109, 26394), (115, 26436), (116, 26439), (135, 26616), (137, 26634), (139, 26649), (140, 26664), (143, 26685), (146, 26718), (149, 26727), (152, 26757), (156, 26796), (160, 26838), (162, 26850), (163, 26853), (172, 26913), (178, 26973), (183, 27018), (187, 27054), (194, 27120), (200, 27174), (202, 27180), (208, 27246), (227, 27417), (229, 27441), (249, 27561), (252, 27582), (254, 27591), (259, 27627),

Gene: Wilder_18 Start: 16994, Stop: 18727, Start Num: 46

Candidate Starts for Wilder_18:

(Start: 46 @16994 has 31 MA's), (56, 17063), (72, 17204), (73, 17207), (81, 17252), (85, 17285), (87, 17294), (91, 17330), (99, 17384), (103, 17411), (105, 17423), (109, 17474), (110, 17480), (114, 17513), (132, 17666), (135, 17690), (136, 17699), (141, 17744), (143, 17759), (153, 17837), (167, 17957), (173, 18020), (183, 18092), (187, 18128), (200, 18248), (202, 18254), (204, 18266), (209, 18329), (217, 18416), (220, 18443), (229, 18512), (230, 18527), (232, 18539), (237, 18563), (249,

18641),

Gene: Winky_18 Start: 16989, Stop: 18722, Start Num: 46

Candidate Starts for Winky_18:

(Start: 46 @16989 has 31 MA's), (56, 17058), (72, 17199), (73, 17202), (81, 17247), (85, 17280), (87, 17289), (91, 17325), (99, 17379), (103, 17406), (105, 17418), (109, 17469), (110, 17475), (114, 17508), (132, 17661), (135, 17685), (136, 17694), (141, 17739), (143, 17754), (153, 17832), (167, 17952), (173, 18015), (183, 18087), (187, 18123), (200, 18243), (202, 18249), (204, 18261), (209, 18324), (217, 18411), (220, 18438), (229, 18507), (230, 18522), (232, 18534), (237, 18558), (249, 18636),

Gene: Wyatt2_18 Start: 16746, Stop: 18515, Start Num: 35

Candidate Starts for Wyatt2_18:

(Start: 24 @16683 has 1 MA's), (28, 16704), (30, 16719), (Start: 35 @16746 has 43 MA's), (53, 16839), (61, 16887), (62, 16893), (64, 16920), (65, 16923), (66, 16929), (72, 17001), (75, 17010), (78, 17034), (81, 17049), (84, 17079), (103, 17205), (104, 17214), (106, 17235), (108, 17250), (117, 17319), (123, 17355), (124, 17376), (131, 17445), (135, 17484), (153, 17622), (155, 17634), (162, 17709), (164, 17715), (166, 17733), (172, 17772), (173, 17805), (174, 17814), (176, 17823), (178, 17832), (179, 17835), (190, 17955), (196, 17991), (202, 18039), (204, 18051), (208, 18105), (217, 18201), (218, 18219), (219, 18225), (220, 18228), (225, 18261), (228, 18285), (237, 18348), (243, 18390), (249, 18429), (251, 18447), (255, 18468), (258, 18489),

Gene: Zakai_18 Start: 16983, Stop: 18716, Start Num: 46

Candidate Starts for Zakai_18:

(Start: 46 @16983 has 31 MA's), (56, 17052), (72, 17193), (73, 17196), (81, 17241), (85, 17274), (87, 17283), (91, 17319), (99, 17373), (103, 17400), (105, 17412), (109, 17463), (110, 17469), (114, 17502), (132, 17655), (135, 17679), (136, 17688), (141, 17733), (143, 17748), (153, 17826), (167, 17946), (173, 18009), (183, 18081), (187, 18117), (200, 18237), (202, 18243), (204, 18255), (209, 18318), (214, 18369), (217, 18405), (220, 18432), (229, 18501), (230, 18516), (232, 18528), (237, 18552), (249, 18630),

Gene: Zaria_18 Start: 16760, Stop: 18529, Start Num: 35

Candidate Starts for Zaria_18:

(Start: 24 @16697 has 1 MA's), (28, 16718), (30, 16733), (Start: 35 @16760 has 43 MA's), (53, 16853), (61, 16901), (62, 16907), (64, 16934), (65, 16937), (66, 16943), (72, 17015), (75, 17024), (78, 17048), (81, 17063), (84, 17093), (103, 17219), (104, 17228), (106, 17249), (108, 17264), (117, 17333), (123, 17369), (124, 17390), (131, 17459), (135, 17498), (153, 17636), (155, 17648), (162, 17723), (164, 17729), (166, 17747), (172, 17786), (173, 17819), (174, 17828), (176, 17837), (178, 17846), (190, 17969), (196, 18005), (202, 18053), (204, 18065), (208, 18119), (217, 18215), (218, 18233), (219, 18239), (220, 18242), (225, 18275), (228, 18299), (237, 18362), (243, 18404), (249, 18443), (251, 18461), (255, 18482), (258, 18503),

Gene: ZenTime222_19 Start: 16980, Stop: 18686, Start Num: 47

Candidate Starts for ZenTime222_19:

(23, 16872), (26, 16884), (Start: 47 @16980 has 26 MA's), (56, 17046), (68, 17121), (70, 17127), (77, 17211), (85, 17265), (91, 17310), (92, 17313), (101, 17379), (135, 17664), (162, 17886), (184, 18075), (202, 18213), (204, 18225), (220, 18402), (225, 18438), (249, 18603), (253, 18630), (259, 18669), (260, 18675),

Gene: ZhongYanYuan_17 Start: 16814, Stop: 18547, Start Num: 46

Candidate Starts for ZhongYanYuan_17:

(Start: 46 @16814 has 31 MA's), (56, 16883), (72, 17024), (73, 17027), (78, 17057), (81, 17072), (85, 17105), (91, 17150), (99, 17204), (103, 17231), (105, 17243), (109, 17294), (110, 17300), (114,

17333), (132, 17486), (135, 17510), (136, 17519), (141, 17564), (147, 17615), (158, 17720), (167, 17777), (173, 17840), (183, 17912), (187, 17948), (198, 18047), (200, 18068), (202, 18074), (204, 18086), (209, 18149), (217, 18236), (220, 18263), (225, 18296), (230, 18347), (232, 18359), (237, 18383), (249, 18461), (251, 18479),