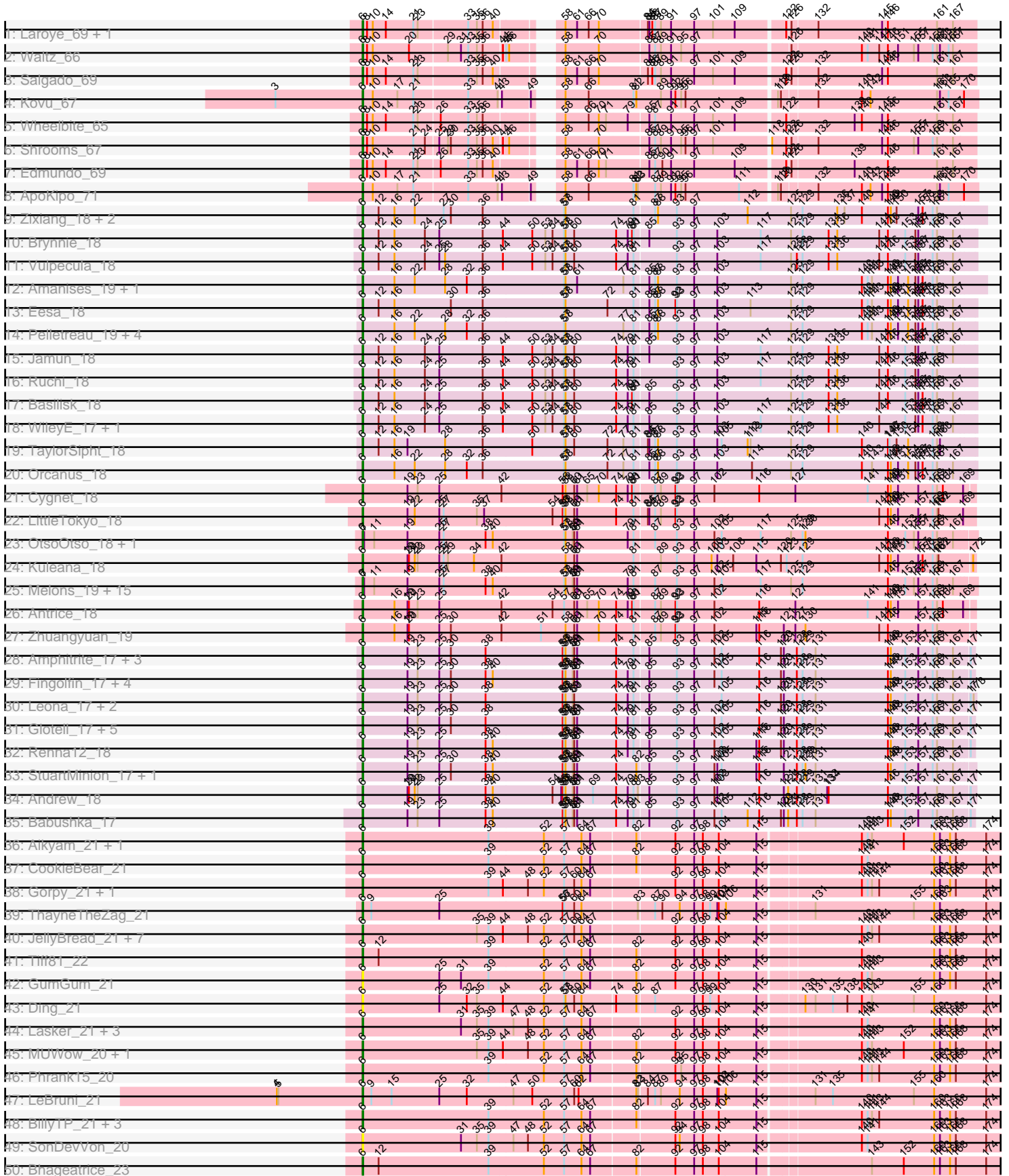


Pham 303139



Note: Tracks are now grouped by subcluster and scaled. Switching in subcluster is indicated by changes in track color. Track scale is now set by default to display the region 30 bp upstream of start 1 to 30 bp downstream of the last possible start. If this default region is judged to be packed too tightly with annotated starts, the track will be further scaled to only show that region of the ORF with annotated starts. This action will be indicated by adding "Zoomed" to the title. For starts, yellow indicates the location of called starts comprised solely of Glimmer/GeneMark auto-annotations, green indicates the location of called starts with at least 1 manual gene annotation.

Pham 303139 Report

This analysis was run 06/08/26 on database version 649.

Pham number 303139 has 145 members, 40 are drafts.

Phages represented in each track:

- Track 1 : Laroye_69, LiSara_66
- Track 2 : Waltz_66
- Track 3 : Salgado_69
- Track 4 : Kovu_67
- Track 5 : Wheelbite_65
- Track 6 : Shrooms_67
- Track 7 : Edmundo_69
- Track 8 : ApoKipo_71
- Track 9 : Zixiang_18, Chicken_18, Niblet_18
- Track 10 : Brynnie_18
- Track 11 : Vulpecula_18
- Track 12 : Amanises_19, Shen_19
- Track 13 : Eesa_18
- Track 14 : Pelletreau_19, Gravel_19, Toad24_19, Westrich_19, KendraB23_19
- Track 15 : Jamun_18
- Track 16 : Ruchi_18
- Track 17 : Basilisk_18
- Track 18 : WileyE_17, Chickaboom_17
- Track 19 : TaylorSipht_18
- Track 20 : Orcanus_18
- Track 21 : Cygnet_18
- Track 22 : LittleTokyo_18
- Track 23 : OtsoOtso_18, Polka_18
- Track 24 : Kuleana_18
- Track 25 : Melons_19, Pineda_19, Bedetta_19, Bibble12_19, Amelia_19, Cote_19, Lunar_19, PhirstandPhine_19, Damocles_19, Daob_19, Coral_18, Colusalem_18, Kepler_18, HannahPhantana_19, GramZayde_18, Jerole_19
- Track 26 : Antrice_18
- Track 27 : Zhuangyuan_19
- Track 28 : Amphitrite_17, HamCheese_17, PhluffyCoco_17, Laphuphu24k_17
- Track 29 : Fingolfin_17, Juno112_17, Camara_17, Oppalora_17, AmiCi24_17
- Track 30 : Leona_17, Azaz_17, Rattail_17
- Track 31 : Glotell_17, KHumphrey_17, DanHam62_17, AdoptaAdorbs_17, Atlantica_17, RedFox_17
- Track 32 : Renna12_18
- Track 33 : StuartMinion_17, AlexMinion_18
- Track 34 : Andrew_18

- Track 35 : Babushka_17
- Track 36 : Aikyam_21, MaterMagnus_21
- Track 37 : CookieBear_21
- Track 38 : Gorpy_21, Sakai_21
- Track 39 : ThayneTheZag_21
- Track 40 : JellyBread_21, Sporco_22, RadFad_21, Vopal_22, Auxilium_21, Raphaella_21, YoungHarleezy_21, Hillester_21
- Track 41 : Tiff81_22
- Track 42 : GumGum_21
- Track 43 : Ding_21
- Track 44 : Lasker_21, Richie_21, BasketStar_21, Windest_22
- Track 45 : MUWow_20, AdaS_21
- Track 46 : Phrank15_20
- Track 47 : LeBruni_21
- Track 48 : BillyTP_21, Mapleville_20, Lawnathon_21, Isolde_21
- Track 49 : SonDevVon_20
- Track 50 : Bhageatrice_23
- Track 51 : Kabloowy_21
- Track 52 : Satrap_21, Shukran_21
- Track 53 : NewKitty_22
- Track 54 : CosmicBrownie_21
- Track 55 : BlueShadow_21
- Track 56 : Nyilah_20
- Track 57 : Globfish_21
- Track 58 : Anekin_20, Crescenzo_21, DarwinJr_24
- Track 59 : Hestia_21
- Track 60 : JakeTheSnake_21
- Track 61 : Persistence_20
- Track 62 : SpicyFrank_21
- Track 63 : Seahorse_22
- Track 64 : MurphyJoseph_21
- Track 65 : MidnightRain_21
- Track 66 : BenchScraper_21
- Track 67 : LittleRon_20, ChuckDuck_20
- Track 68 : FosterFrank_20, PeggyLeg03_20, LilyBell_20, NidoQ_20, Constance_20
- Track 69 : KayMoney_20
- Track 70 : Eileen_20, Peas_20
- Track 71 : GlobiWarming_20
- Track 72 : HotPotato_20
- Track 73 : Henrique_20
- Track 74 : Pucara_20
- Track 75 : Judy_21
- Track 76 : Bridgette_20, Karkharias_20
- Track 77 : NikkiHotWheels_20
- Track 78 : Ottawa_45, Kharcho_45

Summary of Final Annotations (See graph section above for start numbers):

The start number called the most often in the published annotations is 6, it was called in 105 of the 105 non-draft genes in the pham.

Genes that call this "Most Annotated" start:

- AdaS_21, AdoptaAdorbs_17, Aikyam_21, AlexMinion_18, Amanises_19, Amelia_19, AmiCi24_17, Amphitrite_17, Andrew_18, Anekin_20, Antrice_18, ApoKipo_71, Atlantica_17, Auxilium_21, Azaz_17, Babushka_17, Basilisk_18, BasketStar_21, Bedetta_19, BenchScraper_21, Bhageatrice_23, Bibble12_19, BillyTP_21, BlueShadow_21, Bridgette_20, Brynnie_18, Camara_17, Chickaboom_17, Chicken_18, ChuckDuck_20, Colusalem_18, Constance_20, CookieBear_21, Coral_18, CosmicBrownie_21, Cote_19, Crescenzo_21, Cygnet_18, Damocles_19, DanHam62_17, Daob_19, DarwinJr_24, Ding_21, Edmundo_69, Eesa_18, Eileen_20, Fingolfin_17, FosterFrank_20, Globfish_21, GlobiWarming_20, Glotell_17, Gorpy_21, GramZayde_18, Gravel_19, GumGum_21, HamCheese_17, HannahPhantana_19, Henrique_20, Hestia_21, Hillester_21, HotPotato_20, Isolde_21, JakeTheSnake_21, Jamun_18, JellyBread_21, Jerole_19, Judy_21, Juno112_17, KHumphrey_17, Kabloowy_21, Karkharias_20, KayMoney_20, KendraB23_19, Kepler_18, Kharcho_45, Kovu_67, Kuleana_18, Laphuphu24k_17, Laroye_69, Lasker_21, Lawnathon_21, LeBruni_21, Leona_17, LiSara_66, LilyBell_20, LittleRon_20, LittleTokyo_18, Lunar_19, MUWow_20, Mapleville_20, MaterMagnus_21, Melons_19, MidnightRain_21, MurphyJoseph_21, NewKitty_22, Niblet_18, NidoQ_20, NikkiHotWheels_20, Nyilah_20, Oppalora_17, Orcanus_18, OtsoOtso_18, Ottawa_45, Peas_20, PeggyLeg03_20, Pelletreau_19, Persistence_20, PhirstandPhine_19, PhluffyCoco_17, Phrank15_20, Pineda_19, Polka_18, Pucara_20, RadFad_21, Raphaella_21, Rattail_17, RedFox_17, Renna12_18, Richie_21, Ruchi_18, Sakai_21, Salgado_69, Satrap_21, Seahorse_22, Shen_19, Shrooms_67, Shukran_21, SonDevVon_20, SpicyFrank_21, Sporco_22, StuartMinion_17, TaylorSipht_18, ThayneTheZag_21, Tiff81_22, Toad24_19, Vopal_22, Vulpecula_18, Waltz_66, Westrich_19, Wheelbite_65, WileyE_17, Windest_22, YoungHarleezy_21, Zhuangyuan_19, Zixiang_18,

Genes that have the "Most Annotated" start but do not call it:

-

Genes that do not have the "Most Annotated" start:

-

Summary by start number:

Start 6:

- Found in 145 of 145 (100.0%) of genes in pham
- Manual Annotations of this start: 105 of 105
- Called 100.0% of time when present
- Phage (with cluster) where this start called: AdaS_21 (AY), AdoptaAdorbs_17 (AS3), Aikyam_21 (AY), AlexMinion_18 (AS3), Amanises_19 (AS1), Amelia_19 (AS2), AmiCi24_17 (AS3), Amphitrite_17 (AS3), Andrew_18 (AS3), Anekin_20 (AY), Antrice_18 (AS2), ApoKipo_71 (AL), Atlantica_17 (AS3), Auxilium_21 (AY), Azaz_17 (AS3), Babushka_17 (AS3), Basilisk_18 (AS1), BasketStar_21 (AY), Bedetta_19 (AS2), BenchScraper_21 (AY), Bhageatrice_23 (AY), Bibble12_19 (AS2), BillyTP_21 (AY), BlueShadow_21 (AY), Bridgette_20 (FA), Brynnie_18 (AS1), Camara_17 (AS3), Chickaboom_17 (AS1), Chicken_18 (AS1), ChuckDuck_20 (FA), Colusalem_18 (AS2), Constance_20 (FA), CookieBear_21 (AY), Coral_18 (AS2), CosmicBrownie_21 (AY), Cote_19 (AS2), Crescenzo_21 (AY), Cygnet_18 (AS2), Damocles_19 (AS2), DanHam62_17 (AS3), Daob_19 (AS2), DarwinJr_24 (AY), Ding_21 (AY), Edmundo_69 (AL), Eesa_18 (AS1), Eileen_20 (FA), Fingolfin_17

(AS3), FosterFrank_20 (FA), Globfish_21 (AY), GlobiWarming_20 (FA), Glotell_17 (AS3), Gorpy_21 (AY), GramZayde_18 (AS2), Gravel_19 (AS1), GumGum_21 (AY), HamCheese_17 (AS3), HannahPhantana_19 (AS2), Henrique_20 (FA), Hestia_21 (AY), Hillester_21 (AY), HotPotato_20 (FA), Isolde_21 (AY), JakeTheSnake_21 (AY), Jamun_18 (AS1), JellyBread_21 (AY), Jerole_19 (AS2), Judy_21 (FA), Juno112_17 (AS3), KHumphrey_17 (AS3), Kabloowy_21 (AY), Karkharias_20 (FA), KayMoney_20 (FA), KendraB23_19 (AS1), Kepler_18 (AS2), Kharcho_45 (FM), Kovu_67 (AL), Kuleana_18 (AS2), Laphuphu24k_17 (AS3), Laroye_69 (AL), Lasker_21 (AY), Lawnathon_21 (AY), LeBruni_21 (AY), Leona_17 (AS3), LiSara_66 (AL), LilyBell_20 (FA), LittleRon_20 (FA), LittleTokyo_18 (AS2), Lunar_19 (AS2), MUWow_20 (AY), Mapleville_20 (AY), MaterMagnus_21 (AY), Melons_19 (AS2), MidnightRain_21 (AY), MurphyJoseph_21 (AY), NewKitty_22 (AY), Niblet_18 (AS1), NidoQ_20 (FA), NikkiHotWheels_20 (FA), Nyilah_20 (AY), Oppalora_17 (AS3), Orcanus_18 (AS1), OtsoOtso_18 (AS2), Ottawa_45 (FM), Peas_20 (FA), PeggyLeg03_20 (FA), Pelletreau_19 (AS1), Persistence_20 (AY), PhirstandPhine_19 (AS2), PhluffyCoco_17 (AS3), Phrank15_20 (AY), Pineda_19 (AS2), Polka_18 (AS2), Pucara_20 (FA), RadFad_21 (AY), Raphaella_21 (AY), Rattail_17 (AS3), RedFox_17 (AS3), Renna12_18 (AS3), Richie_21 (AY), Ruchi_18 (AS1), Sakai_21 (AY), Salgado_69 (AL), Satrap_21 (AY), Seahorse_22 (AY), Shen_19 (AS1), Shrooms_67 (AL), Shukran_21 (AY), SonDevVon_20 (AY), SpicyFrank_21 (AY), Sporco_22 (AY), StuartMinion_17 (AS3), TaylorSipht_18 (AS1), ThayneTheZag_21 (AY), Tiff81_22 (AY), Toad24_19 (AS1), Vopal_22 (AY), Vulpecula_18 (AS1), Waltz_66 (AL), Westrich_19 (AS1), Wheelbite_65 (AL), WileyE_17 (AS1), Windest_22 (AY), YoungHarleezy_21 (AY), Zhuangyuan_19 (AS2), Zixiang_18 (AS1),

Summary by clusters:

There are 7 clusters represented in this pham: AS3, AS2, AS1, AL, FA, AY, FM,

Info for manual annotations of cluster AL:

- Start number 6 was manually annotated 9 times for cluster AL.

Info for manual annotations of cluster AS1:

- Start number 6 was manually annotated 15 times for cluster AS1.

Info for manual annotations of cluster AS2:

- Start number 6 was manually annotated 17 times for cluster AS2.

Info for manual annotations of cluster AS3:

- Start number 6 was manually annotated 16 times for cluster AS3.

Info for manual annotations of cluster AY:

- Start number 6 was manually annotated 34 times for cluster AY.

Info for manual annotations of cluster FA:

- Start number 6 was manually annotated 12 times for cluster FA.

Info for manual annotations of cluster FM:

- Start number 6 was manually annotated 2 times for cluster FM.

Gene Information:

Gene: AdaS_21 Start: 15623, Stop: 16924, Start Num: 6

Candidate Starts for AdaS_21:

(Start: 6 @15623 has 105 MA's), (35, 15860), (39, 15884), (44, 15911), (48, 15962), (52, 15992), (57, 16034), (64, 16070), (67, 16088), (82, 16178), (92, 16253), (97, 16292), (98, 16310), (104, 16343), (115, 16415), (140, 16613), (141, 16625), (143, 16634), (152, 16700), (160, 16763), (163, 16775), (166, 16796), (168, 16808), (174, 16871),

Gene: AdoptaAdorbs_17 Start: 12931, Stop: 14175, Start Num: 6

Candidate Starts for AdoptaAdorbs_17:

(Start: 6 @12931 has 105 MA's), (19, 13024), (23, 13045), (25, 13090), (30, 13114), (38, 13186), (56, 13342), (57, 13345), (58, 13348), (59, 13363), (60, 13366), (61, 13372), (74, 13453), (79, 13477), (81, 13489), (85, 13516), (93, 13573), (97, 13609), (102, 13651), (105, 13666), (116, 13741), (120, 13783), (121, 13789), (128, 13816), (129, 13828), (131, 13855), (146, 14005), (148, 14011), (153, 14041), (157, 14068), (159, 14095), (161, 14104), (167, 14137), (171, 14167),

Gene: Aikyam_21 Start: 15624, Stop: 16925, Start Num: 6

Candidate Starts for Aikyam_21:

(Start: 6 @15624 has 105 MA's), (39, 15885), (52, 15993), (57, 16035), (64, 16071), (67, 16089), (82, 16179), (92, 16254), (97, 16293), (98, 16311), (104, 16344), (115, 16416), (140, 16614), (141, 16626), (143, 16635), (152, 16701), (160, 16764), (163, 16776), (166, 16797), (168, 16809), (174, 16872),

Gene: AlexMinion_18 Start: 12969, Stop: 14216, Start Num: 6

Candidate Starts for AlexMinion_18:

(Start: 6 @12969 has 105 MA's), (19, 13062), (23, 13083), (25, 13128), (30, 13152), (38, 13224), (40, 13239), (56, 13380), (57, 13383), (58, 13386), (59, 13401), (60, 13404), (61, 13410), (74, 13491), (82, 13533), (85, 13554), (93, 13611), (97, 13647), (102, 13689), (103, 13695), (105, 13704), (115, 13773), (116, 13779), (121, 13827), (128, 13854), (129, 13866), (130, 13872), (131, 13893), (146, 14043), (148, 14049), (153, 14079), (157, 14106), (159, 14133), (161, 14142), (167, 14175),

Gene: Amanises_19 Start: 14538, Stop: 15809, Start Num: 6

Candidate Starts for Amanises_19:

(Start: 6 @14538 has 105 MA's), (16, 14604), (22, 14646), (28, 14709), (32, 14754), (36, 14787), (57, 14949), (58, 14952), (61, 14976), (77, 15072), (81, 15093), (85, 15120), (87, 15132), (88, 15138), (93, 15177), (97, 15213), (103, 15261), (125, 15411), (129, 15435), (140, 15558), (141, 15570), (143, 15579), (146, 15612), (148, 15618), (151, 15633), (154, 15654), (156, 15669), (157, 15675), (158, 15681), (159, 15702), (161, 15711), (167, 15744),

Gene: Amelia_19 Start: 13377, Stop: 14630, Start Num: 6

Candidate Starts for Amelia_19:

(Start: 6 @13377 has 105 MA's), (7, 13380), (11, 13401), (19, 13470), (25, 13536), (27, 13545), (38, 13632), (40, 13647), (57, 13791), (58, 13794), (59, 13809), (60, 13812), (61, 13818), (79, 13923), (81, 13935), (87, 13974), (93, 14019), (97, 14055), (102, 14097), (105, 14112), (117, 14190), (125, 14253), (129, 14277), (146, 14454), (153, 14490), (155, 14508), (157, 14517), (159, 14544), (161, 14553), (167, 14586),

Gene: AmiCi24_17 Start: 12929, Stop: 14173, Start Num: 6

Candidate Starts for AmiCi24_17:

(Start: 6 @12929 has 105 MA's), (19, 13022), (23, 13043), (25, 13088), (30, 13112), (38, 13184), (40, 13199), (56, 13340), (57, 13343), (58, 13346), (59, 13361), (60, 13364), (61, 13370), (74, 13451), (79, 13475), (81, 13487), (85, 13514), (93, 13571), (97, 13607), (102, 13649), (105, 13664), (116, 13739), (120, 13781), (121, 13787), (128, 13814), (129, 13826), (131, 13853), (146, 14003), (148, 14009), (153, 14039), (157, 14066), (159, 14093), (161, 14102), (167, 14135), (171, 14165),

Gene: Amphitrite_17 Start: 12929, Stop: 14173, Start Num: 6

Candidate Starts for Amphitrite_17:

(Start: 6 @12929 has 105 MA's), (19, 13022), (23, 13043), (25, 13088), (30, 13112), (38, 13184), (56, 13340), (57, 13343), (58, 13346), (59, 13361), (60, 13364), (61, 13370), (74, 13451), (81, 13487), (85, 13514), (93, 13571), (97, 13607), (102, 13649), (105, 13664), (116, 13739), (120, 13781), (121, 13787), (128, 13814), (129, 13826), (131, 13853), (146, 14003), (148, 14009), (153, 14039), (157, 14066), (159, 14093), (161, 14102), (167, 14135), (171, 14165),

Gene: Andrew_18 Start: 13390, Stop: 14640, Start Num: 6

Candidate Starts for Andrew_18:

(Start: 6 @13390 has 105 MA's), (19, 13483), (20, 13486), (22, 13498), (23, 13504), (25, 13549), (38, 13645), (40, 13660), (54, 13780), (55, 13798), (56, 13801), (57, 13804), (58, 13807), (59, 13822), (60, 13825), (61, 13831), (69, 13864), (74, 13912), (79, 13936), (81, 13948), (83, 13957), (85, 13975), (93, 14032), (97, 14068), (102, 14110), (103, 14116), (116, 14200), (121, 14251), (124, 14260), (128, 14278), (129, 14290), (131, 14317), (133, 14341), (134, 14344), (146, 14467), (153, 14503), (157, 14530), (161, 14566), (167, 14599), (171, 14629),

Gene: Anekin_20 Start: 15586, Stop: 16887, Start Num: 6

Candidate Starts for Anekin_20:

(Start: 6 @15586 has 105 MA's), (9, 15604), (25, 15745), (35, 15823), (47, 15895), (57, 15997), (60, 16018), (64, 16033), (78, 16120), (83, 16144), (87, 16174), (90, 16189), (92, 16216), (97, 16255), (98, 16273), (99, 16288), (104, 16306), (115, 16378), (135, 16516), (155, 16684), (160, 16726), (163, 16738), (174, 16834),

Gene: Antrice_18 Start: 13934, Stop: 15181, Start Num: 6

Candidate Starts for Antrice_18:

(Start: 6 @13934 has 105 MA's), (16, 14000), (19, 14027), (20, 14030), (23, 14048), (25, 14093), (42, 14219), (54, 14324), (57, 14348), (60, 14369), (61, 14375), (65, 14396), (70, 14420), (74, 14456), (79, 14480), (80, 14489), (81, 14492), (87, 14528), (89, 14540), (92, 14570), (93, 14573), (97, 14609), (102, 14651), (116, 14741), (127, 14816), (141, 14966), (146, 15008), (148, 15014), (151, 15029), (157, 15071), (159, 15098), (161, 15107), (164, 15119), (169, 15161),

Gene: ApoKipo_71 Start: 42421, Stop: 43596, Start Num: 6

Candidate Starts for ApoKipo_71:

(Start: 6 @42421 has 105 MA's), (10, 42442), (17, 42490), (21, 42523), (33, 42628), (41, 42688), (43, 42691), (49, 42745), (58, 42772), (66, 42820), (81, 42910), (82, 42916), (83, 42919), (87, 42955), (89, 42967), (91, 42988), (92, 42997), (95, 43009), (96, 43018), (111, 43129), (119, 43198), (120, 43204), (132, 43270), (140, 43360), (142, 43378), (145, 43402), (146, 43414), (161, 43513), (163, 43519), (165, 43537), (170, 43567),

Gene: Atlantica_17 Start: 12931, Stop: 14175, Start Num: 6

Candidate Starts for Atlantica_17:

(Start: 6 @12931 has 105 MA's), (19, 13024), (23, 13045), (25, 13090), (30, 13114), (38, 13186), (56, 13342), (57, 13345), (58, 13348), (59, 13363), (60, 13366), (61, 13372), (74, 13453), (79, 13477), (81, 13489), (85, 13516), (93, 13573), (97, 13609), (102, 13651), (105, 13666), (116, 13741), (120, 13783), (121, 13789), (128, 13816), (129, 13828), (131, 13855), (146, 14005), (148, 14011), (153, 14041), (157, 14068), (159, 14095), (161, 14104), (167, 14137), (171, 14167),

Gene: Auxilium_21 Start: 15623, Stop: 16924, Start Num: 6

Candidate Starts for Auxilium_21:

(Start: 6 @15623 has 105 MA's), (35, 15860), (39, 15884), (44, 15911), (48, 15962), (52, 15992), (57, 16034), (60, 16055), (64, 16070), (67, 16088), (92, 16253), (97, 16292), (98, 16310), (104, 16343), (115, 16415), (140, 16613), (141, 16625), (143, 16634), (144, 16649), (160, 16763), (163, 16775),

(166, 16796), (168, 16808), (174, 16871),

Gene: Azaz_17 Start: 12982, Stop: 14229, Start Num: 6

Candidate Starts for Azaz_17:

(Start: 6 @12982 has 105 MA's), (19, 13075), (23, 13096), (25, 13141), (30, 13165), (38, 13237), (56, 13393), (57, 13396), (58, 13399), (59, 13414), (60, 13417), (74, 13504), (79, 13528), (81, 13540), (85, 13567), (93, 13624), (97, 13660), (105, 13717), (116, 13792), (120, 13834), (121, 13840), (128, 13867), (129, 13879), (131, 13906), (146, 14056), (148, 14062), (153, 14092), (157, 14119), (159, 14146), (161, 14155), (167, 14188), (171, 14218), (173, 14224),

Gene: Babushka_17 Start: 12984, Stop: 14228, Start Num: 6

Candidate Starts for Babushka_17:

(Start: 6 @12984 has 105 MA's), (19, 13077), (23, 13098), (25, 13143), (38, 13239), (40, 13254), (56, 13395), (57, 13398), (58, 13401), (59, 13416), (60, 13419), (61, 13425), (74, 13506), (79, 13530), (81, 13542), (85, 13569), (93, 13626), (97, 13662), (102, 13704), (105, 13719), (112, 13770), (116, 13794), (120, 13836), (121, 13842), (124, 13851), (128, 13869), (129, 13881), (131, 13908), (146, 14058), (148, 14064), (153, 14094), (157, 14121), (159, 14148), (161, 14157), (167, 14190), (171, 14220),

Gene: Basilisk_18 Start: 14668, Stop: 15918, Start Num: 6

Candidate Starts for Basilisk_18:

(Start: 6 @14668 has 105 MA's), (12, 14701), (16, 14734), (24, 14797), (25, 14827), (36, 14917), (44, 14956), (50, 15016), (53, 15040), (54, 15055), (57, 15079), (58, 15082), (60, 15100), (74, 15187), (79, 15211), (80, 15220), (81, 15223), (85, 15250), (93, 15307), (97, 15343), (103, 15391), (125, 15541), (129, 15565), (134, 15619), (136, 15637), (144, 15724), (146, 15742), (153, 15778), (156, 15799), (157, 15805), (158, 15811), (159, 15832), (161, 15841), (167, 15874),

Gene: BasketStar_21 Start: 15677, Stop: 16978, Start Num: 6

Candidate Starts for BasketStar_21:

(Start: 6 @15677 has 105 MA's), (31, 15881), (35, 15914), (39, 15938), (47, 15986), (48, 16016), (52, 16046), (57, 16088), (64, 16124), (67, 16142), (92, 16307), (97, 16346), (98, 16364), (104, 16397), (115, 16469), (140, 16667), (141, 16679), (160, 16817), (163, 16829), (166, 16850), (168, 16862), (174, 16925),

Gene: Bedetta_19 Start: 13377, Stop: 14630, Start Num: 6

Candidate Starts for Bedetta_19:

(Start: 6 @13377 has 105 MA's), (7, 13380), (11, 13401), (19, 13470), (25, 13536), (27, 13545), (38, 13632), (40, 13647), (57, 13791), (58, 13794), (59, 13809), (60, 13812), (61, 13818), (79, 13923), (81, 13935), (87, 13974), (93, 14019), (97, 14055), (102, 14097), (105, 14112), (117, 14190), (125, 14253), (129, 14277), (146, 14454), (153, 14490), (155, 14508), (157, 14517), (159, 14544), (161, 14553), (167, 14586),

Gene: BenchScraper_21 Start: 15638, Stop: 16939, Start Num: 6

Candidate Starts for BenchScraper_21:

(Start: 6 @15638 has 105 MA's), (31, 15842), (35, 15875), (39, 15899), (47, 15947), (48, 15977), (52, 16007), (57, 16049), (64, 16085), (67, 16103), (92, 16268), (97, 16307), (98, 16325), (104, 16358), (115, 16430), (140, 16628), (141, 16640), (143, 16649), (152, 16715), (160, 16778), (163, 16790), (166, 16811), (168, 16823), (174, 16886),

Gene: Bhageatrice_23 Start: 16913, Stop: 18214, Start Num: 6

Candidate Starts for Bhageatrice_23:

(Start: 6 @16913 has 105 MA's), (12, 16946), (39, 17174), (52, 17282), (57, 17324), (64, 17360), (67, 17378), (82, 17468), (92, 17543), (97, 17582), (98, 17600), (104, 17633), (115, 17705), (143, 17924), (152, 17990), (160, 18053), (163, 18065), (166, 18086), (168, 18098), (174, 18161),

Gene: Bible12_19 Start: 13380, Stop: 14633, Start Num: 6

Candidate Starts for Bible12_19:

(Start: 6 @13380 has 105 MA's), (7, 13383), (11, 13404), (19, 13473), (25, 13539), (27, 13548), (38, 13635), (40, 13650), (57, 13794), (58, 13797), (59, 13812), (60, 13815), (61, 13821), (79, 13926), (81, 13938), (87, 13977), (93, 14022), (97, 14058), (102, 14100), (105, 14115), (117, 14193), (125, 14256), (129, 14280), (146, 14457), (153, 14493), (155, 14511), (157, 14520), (159, 14547), (161, 14556), (167, 14589),

Gene: BillyTP_21 Start: 15407, Stop: 16708, Start Num: 6

Candidate Starts for BillyTP_21:

(Start: 6 @15407 has 105 MA's), (39, 15668), (52, 15776), (57, 15818), (64, 15854), (67, 15872), (82, 15962), (92, 16037), (97, 16076), (98, 16094), (104, 16127), (115, 16199), (140, 16397), (141, 16409), (143, 16418), (144, 16433), (160, 16547), (163, 16559), (166, 16580), (168, 16592), (174, 16655),

Gene: BlueShadow_21 Start: 15623, Stop: 16924, Start Num: 6

Candidate Starts for BlueShadow_21:

(Start: 6 @15623 has 105 MA's), (31, 15827), (35, 15860), (39, 15884), (47, 15932), (48, 15962), (52, 15992), (57, 16034), (64, 16070), (67, 16088), (92, 16253), (97, 16292), (98, 16310), (104, 16343), (109, 16370), (115, 16415), (140, 16613), (141, 16625), (160, 16763), (163, 16775), (166, 16796), (168, 16808), (174, 16871),

Gene: Bridgette_20 Start: 15685, Stop: 16986, Start Num: 6

Candidate Starts for Bridgette_20:

(Start: 6 @15685 has 105 MA's), (9, 15703), (15, 15745), (25, 15844), (52, 16054), (57, 16096), (64, 16132), (85, 16261), (87, 16273), (90, 16288), (92, 16315), (94, 16324), (97, 16354), (98, 16372), (104, 16405), (110, 16435), (114, 16468), (115, 16477), (135, 16615), (140, 16675), (141, 16687), (155, 16783), (160, 16825), (163, 16837), (168, 16870), (174, 16933),

Gene: Brynnie_18 Start: 14480, Stop: 15730, Start Num: 6

Candidate Starts for Brynnie_18:

(Start: 6 @14480 has 105 MA's), (12, 14513), (16, 14546), (24, 14609), (25, 14639), (36, 14729), (44, 14768), (50, 14828), (53, 14852), (54, 14867), (57, 14891), (58, 14894), (60, 14912), (74, 14999), (79, 15023), (80, 15032), (81, 15035), (85, 15062), (93, 15119), (97, 15155), (103, 15203), (117, 15290), (125, 15353), (129, 15377), (134, 15431), (136, 15449), (144, 15536), (146, 15554), (153, 15590), (156, 15611), (157, 15617), (159, 15644), (161, 15653), (167, 15686),

Gene: Camara_17 Start: 12932, Stop: 14176, Start Num: 6

Candidate Starts for Camara_17:

(Start: 6 @12932 has 105 MA's), (19, 13025), (23, 13046), (25, 13091), (30, 13115), (38, 13187), (40, 13202), (56, 13343), (57, 13346), (58, 13349), (59, 13364), (60, 13367), (61, 13373), (74, 13454), (79, 13478), (81, 13490), (85, 13517), (93, 13574), (97, 13610), (102, 13652), (105, 13667), (116, 13742), (120, 13784), (121, 13790), (128, 13817), (129, 13829), (131, 13856), (146, 14006), (148, 14012), (153, 14042), (157, 14069), (159, 14096), (161, 14105), (167, 14138), (171, 14168),

Gene: Chickaboom_17 Start: 13406, Stop: 14656, Start Num: 6

Candidate Starts for Chickaboom_17:

(Start: 6 @13406 has 105 MA's), (12, 13439), (16, 13472), (24, 13535), (25, 13565), (36, 13655), (44, 13694), (50, 13754), (53, 13778), (54, 13793), (57, 13817), (58, 13820), (60, 13838), (74, 13925), (79, 13949), (81, 13961), (85, 13988), (93, 14045), (97, 14081), (103, 14129), (117, 14216), (125, 14279), (129, 14303), (134, 14357), (136, 14375), (144, 14462), (153, 14516), (156, 14537), (157, 14543), (158, 14549), (159, 14570), (161, 14579), (167, 14612),

Gene: Chicken_18 Start: 14417, Stop: 15667, Start Num: 6

Candidate Starts for Chicken_18:

(Start: 6 @14417 has 105 MA's), (12, 14450), (16, 14483), (22, 14525), (27, 14585), (30, 14600), (36, 14666), (57, 14828), (58, 14831), (81, 14972), (87, 15011), (88, 15017), (93, 15056), (97, 15092), (112, 15200), (125, 15290), (129, 15314), (136, 15386), (137, 15401), (140, 15437), (146, 15491), (148, 15497), (150, 15509), (157, 15554), (158, 15560), (159, 15581), (161, 15590),

Gene: ChuckDuck_20 Start: 15527, Stop: 16828, Start Num: 6

Candidate Starts for ChuckDuck_20:

(Start: 6 @15527 has 105 MA's), (9, 15545), (25, 15686), (32, 15743), (35, 15764), (57, 15938), (63, 15971), (64, 15974), (90, 16130), (97, 16196), (98, 16214), (103, 16244), (104, 16247), (115, 16319), (140, 16517), (141, 16529), (155, 16625), (160, 16667), (163, 16679), (174, 16775),

Gene: Colusalem_18 Start: 13216, Stop: 14469, Start Num: 6

Candidate Starts for Colusalem_18:

(Start: 6 @13216 has 105 MA's), (7, 13219), (11, 13240), (19, 13309), (25, 13375), (27, 13384), (38, 13471), (40, 13486), (57, 13630), (58, 13633), (59, 13648), (60, 13651), (61, 13657), (79, 13762), (81, 13774), (87, 13813), (93, 13858), (97, 13894), (102, 13936), (105, 13951), (117, 14029), (125, 14092), (129, 14116), (146, 14293), (153, 14329), (155, 14347), (157, 14356), (159, 14383), (161, 14392), (167, 14425),

Gene: Constance_20 Start: 15667, Stop: 16968, Start Num: 6

Candidate Starts for Constance_20:

(Start: 6 @15667 has 105 MA's), (9, 15685), (25, 15826), (52, 16036), (57, 16078), (64, 16114), (75, 16183), (87, 16255), (90, 16270), (92, 16297), (97, 16336), (98, 16354), (103, 16384), (104, 16387), (106, 16396), (115, 16459), (135, 16597), (140, 16657), (141, 16669), (155, 16765), (160, 16807), (163, 16819), (174, 16915),

Gene: CookieBear_21 Start: 15623, Stop: 16924, Start Num: 6

Candidate Starts for CookieBear_21:

(Start: 6 @15623 has 105 MA's), (39, 15884), (52, 15992), (57, 16034), (64, 16070), (67, 16088), (82, 16178), (92, 16253), (97, 16292), (98, 16310), (104, 16343), (115, 16415), (140, 16613), (141, 16625), (160, 16763), (163, 16775), (166, 16796), (168, 16808), (174, 16871),

Gene: Coral_18 Start: 13216, Stop: 14469, Start Num: 6

Candidate Starts for Coral_18:

(Start: 6 @13216 has 105 MA's), (7, 13219), (11, 13240), (19, 13309), (25, 13375), (27, 13384), (38, 13471), (40, 13486), (57, 13630), (58, 13633), (59, 13648), (60, 13651), (61, 13657), (79, 13762), (81, 13774), (87, 13813), (93, 13858), (97, 13894), (102, 13936), (105, 13951), (117, 14029), (125, 14092), (129, 14116), (146, 14293), (153, 14329), (155, 14347), (157, 14356), (159, 14383), (161, 14392), (167, 14425),

Gene: CosmicBrownie_21 Start: 15581, Stop: 16882, Start Num: 6

Candidate Starts for CosmicBrownie_21:

(Start: 6 @15581 has 105 MA's), (25, 15740), (31, 15785), (37, 15833), (39, 15842), (52, 15950), (57, 15992), (60, 16013), (64, 16028), (67, 16046), (82, 16136), (92, 16211), (97, 16250), (98, 16268), (104, 16301), (115, 16373), (140, 16571), (143, 16592), (144, 16607), (160, 16721), (163, 16733), (166, 16754), (168, 16766), (174, 16829),

Gene: Cote_19 Start: 13377, Stop: 14630, Start Num: 6

Candidate Starts for Cote_19:

(Start: 6 @13377 has 105 MA's), (7, 13380), (11, 13401), (19, 13470), (25, 13536), (27, 13545), (38, 13632), (40, 13647), (57, 13791), (58, 13794), (59, 13809), (60, 13812), (61, 13818), (79, 13923), (81,

13935), (87, 13974), (93, 14019), (97, 14055), (102, 14097), (105, 14112), (117, 14190), (125, 14253), (129, 14277), (146, 14454), (153, 14490), (155, 14508), (157, 14517), (159, 14544), (161, 14553), (167, 14586),

Gene: Crescenzo_21 Start: 15514, Stop: 16815, Start Num: 6

Candidate Starts for Crescenzo_21:

(Start: 6 @15514 has 105 MA's), (9, 15532), (25, 15673), (35, 15751), (47, 15823), (57, 15925), (60, 15946), (64, 15961), (78, 16048), (83, 16072), (87, 16102), (90, 16117), (92, 16144), (97, 16183), (98, 16201), (99, 16216), (104, 16234), (115, 16306), (135, 16444), (155, 16612), (160, 16654), (163, 16666), (174, 16762),

Gene: Cygnet_18 Start: 14044, Stop: 15291, Start Num: 6

Candidate Starts for Cygnet_18:

(Start: 6 @14044 has 105 MA's), (19, 14137), (23, 14158), (25, 14203), (42, 14329), (56, 14455), (58, 14461), (60, 14479), (61, 14485), (65, 14506), (70, 14530), (74, 14566), (79, 14590), (80, 14599), (81, 14602), (87, 14638), (89, 14650), (92, 14680), (93, 14683), (97, 14719), (102, 14761), (116, 14851), (127, 14926), (141, 15076), (146, 15118), (148, 15124), (151, 15139), (157, 15181), (159, 15208), (161, 15217), (164, 15229), (169, 15271),

Gene: Damocles_19 Start: 13377, Stop: 14630, Start Num: 6

Candidate Starts for Damocles_19:

(Start: 6 @13377 has 105 MA's), (7, 13380), (11, 13401), (19, 13470), (25, 13536), (27, 13545), (38, 13632), (40, 13647), (57, 13791), (58, 13794), (59, 13809), (60, 13812), (61, 13818), (79, 13923), (81, 13935), (87, 13974), (93, 14019), (97, 14055), (102, 14097), (105, 14112), (117, 14190), (125, 14253), (129, 14277), (146, 14454), (153, 14490), (155, 14508), (157, 14517), (159, 14544), (161, 14553), (167, 14586),

Gene: DanHam62_17 Start: 12931, Stop: 14175, Start Num: 6

Candidate Starts for DanHam62_17:

(Start: 6 @12931 has 105 MA's), (19, 13024), (23, 13045), (25, 13090), (30, 13114), (38, 13186), (56, 13342), (57, 13345), (58, 13348), (59, 13363), (60, 13366), (61, 13372), (74, 13453), (79, 13477), (81, 13489), (85, 13516), (93, 13573), (97, 13609), (102, 13651), (105, 13666), (116, 13741), (120, 13783), (121, 13789), (128, 13816), (129, 13828), (131, 13855), (146, 14005), (148, 14011), (153, 14041), (157, 14068), (159, 14095), (161, 14104), (167, 14137), (171, 14167),

Gene: Daob_19 Start: 13380, Stop: 14633, Start Num: 6

Candidate Starts for Daob_19:

(Start: 6 @13380 has 105 MA's), (7, 13383), (11, 13404), (19, 13473), (25, 13539), (27, 13548), (38, 13635), (40, 13650), (57, 13794), (58, 13797), (59, 13812), (60, 13815), (61, 13821), (79, 13926), (81, 13938), (87, 13977), (93, 14022), (97, 14058), (102, 14100), (105, 14115), (117, 14193), (125, 14256), (129, 14280), (146, 14457), (153, 14493), (155, 14511), (157, 14520), (159, 14547), (161, 14556), (167, 14589),

Gene: DarwinJr_24 Start: 16818, Stop: 18119, Start Num: 6

Candidate Starts for DarwinJr_24:

(Start: 6 @16818 has 105 MA's), (9, 16836), (25, 16977), (35, 17055), (47, 17127), (57, 17229), (60, 17250), (64, 17265), (78, 17352), (83, 17376), (87, 17406), (90, 17421), (92, 17448), (97, 17487), (98, 17505), (99, 17520), (104, 17538), (115, 17610), (135, 17748), (155, 17916), (160, 17958), (163, 17970), (174, 18066),

Gene: Ding_21 Start: 15686, Stop: 16987, Start Num: 6

Candidate Starts for Ding_21:

(Start: 6 @15686 has 105 MA's), (25, 15845), (32, 15902), (35, 15923), (44, 15974), (52, 16055), (57, 16097), (58, 16100), (60, 16118), (64, 16133), (74, 16199), (82, 16241), (87, 16274), (97, 16355), (98, 16373), (99, 16388), (104, 16406), (115, 16478), (130, 16559), (131, 16580), (135, 16616), (138, 16646), (140, 16676), (143, 16697), (155, 16784), (160, 16826), (174, 16934),

Gene: Edmundo_69 Start: 42213, Stop: 43382, Start Num: 6

Candidate Starts for Edmundo_69:

(Start: 6 @42213 has 105 MA's), (8, 42222), (10, 42234), (14, 42261), (21, 42318), (23, 42324), (26, 42366), (33, 42423), (35, 42441), (36, 42453), (40, 42474), (58, 42567), (61, 42591), (66, 42615), (70, 42636), (71, 42651), (85, 42732), (87, 42744), (90, 42759), (91, 42777), (97, 42825), (109, 42909), (122, 43002), (126, 43008), (139, 43134), (146, 43203), (161, 43302), (167, 43335),

Gene: Eesa_18 Start: 14631, Stop: 15881, Start Num: 6

Candidate Starts for Eesa_18:

(Start: 6 @14631 has 105 MA's), (12, 14664), (16, 14697), (30, 14814), (36, 14880), (57, 15042), (58, 15045), (72, 15132), (81, 15186), (85, 15213), (87, 15225), (88, 15231), (92, 15267), (93, 15270), (97, 15306), (103, 15354), (113, 15420), (125, 15504), (129, 15528), (140, 15651), (141, 15663), (143, 15672), (146, 15705), (148, 15711), (151, 15726), (154, 15747), (156, 15762), (157, 15768), (158, 15774), (159, 15795), (161, 15804), (167, 15837),

Gene: Eileen_20 Start: 15628, Stop: 16929, Start Num: 6

Candidate Starts for Eileen_20:

(Start: 6 @15628 has 105 MA's), (9, 15646), (15, 15688), (25, 15787), (52, 15997), (57, 16039), (64, 16075), (87, 16216), (90, 16231), (92, 16258), (94, 16267), (97, 16297), (98, 16315), (104, 16348), (115, 16420), (135, 16558), (140, 16618), (141, 16630), (155, 16726), (160, 16768), (163, 16780), (174, 16876),

Gene: Fingolfin_17 Start: 12932, Stop: 14176, Start Num: 6

Candidate Starts for Fingolfin_17:

(Start: 6 @12932 has 105 MA's), (19, 13025), (23, 13046), (25, 13091), (30, 13115), (38, 13187), (40, 13202), (56, 13343), (57, 13346), (58, 13349), (59, 13364), (60, 13367), (61, 13373), (74, 13454), (79, 13478), (81, 13490), (85, 13517), (93, 13574), (97, 13610), (102, 13652), (105, 13667), (116, 13742), (120, 13784), (121, 13790), (128, 13817), (129, 13829), (131, 13856), (146, 14006), (148, 14012), (153, 14042), (157, 14069), (159, 14096), (161, 14105), (167, 14138), (171, 14168),

Gene: FosterFrank_20 Start: 15625, Stop: 16926, Start Num: 6

Candidate Starts for FosterFrank_20:

(Start: 6 @15625 has 105 MA's), (9, 15643), (25, 15784), (52, 15994), (57, 16036), (64, 16072), (75, 16141), (87, 16213), (90, 16228), (92, 16255), (97, 16294), (98, 16312), (103, 16342), (104, 16345), (106, 16354), (115, 16417), (135, 16555), (140, 16615), (141, 16627), (155, 16723), (160, 16765), (163, 16777), (174, 16873),

Gene: Globfish_21 Start: 15696, Stop: 16997, Start Num: 6

Candidate Starts for Globfish_21:

(Start: 6 @15696 has 105 MA's), (39, 15957), (52, 16065), (57, 16107), (67, 16161), (83, 16254), (92, 16326), (97, 16365), (98, 16383), (103, 16413), (104, 16416), (110, 16446), (115, 16488), (130, 16569), (140, 16686), (143, 16707), (152, 16773), (160, 16836), (163, 16848), (174, 16944),

Gene: GlobiWarming_20 Start: 15621, Stop: 16922, Start Num: 6

Candidate Starts for GlobiWarming_20:

(Start: 6 @15621 has 105 MA's), (9, 15639), (52, 15990), (57, 16032), (64, 16068), (87, 16209), (90, 16224), (92, 16251), (97, 16290), (98, 16308), (104, 16341), (114, 16404), (115, 16413), (135, 16551), (140, 16611), (141, 16623), (155, 16719), (160, 16761), (163, 16773), (174, 16869),

Gene: Glotell_17 Start: 12929, Stop: 14173, Start Num: 6

Candidate Starts for Glotell_17:

(Start: 6 @12929 has 105 MA's), (19, 13022), (23, 13043), (25, 13088), (30, 13112), (38, 13184), (56, 13340), (57, 13343), (58, 13346), (59, 13361), (60, 13364), (61, 13370), (74, 13451), (79, 13475), (81, 13487), (85, 13514), (93, 13571), (97, 13607), (102, 13649), (105, 13664), (116, 13739), (120, 13781), (121, 13787), (128, 13814), (129, 13826), (131, 13853), (146, 14003), (148, 14009), (153, 14039), (157, 14066), (159, 14093), (161, 14102), (167, 14135), (171, 14165),

Gene: Gorpy_21 Start: 15632, Stop: 16933, Start Num: 6

Candidate Starts for Gorpy_21:

(Start: 6 @15632 has 105 MA's), (39, 15893), (44, 15920), (48, 15971), (52, 16001), (57, 16043), (60, 16064), (64, 16079), (67, 16097), (92, 16262), (97, 16301), (98, 16319), (104, 16352), (115, 16424), (140, 16622), (141, 16634), (143, 16643), (144, 16658), (160, 16772), (163, 16784), (166, 16805), (168, 16817), (174, 16880),

Gene: GramZayde_18 Start: 13216, Stop: 14469, Start Num: 6

Candidate Starts for GramZayde_18:

(Start: 6 @13216 has 105 MA's), (7, 13219), (11, 13240), (19, 13309), (25, 13375), (27, 13384), (38, 13471), (40, 13486), (57, 13630), (58, 13633), (59, 13648), (60, 13651), (61, 13657), (79, 13762), (81, 13774), (87, 13813), (93, 13858), (97, 13894), (102, 13936), (105, 13951), (117, 14029), (125, 14092), (129, 14116), (146, 14293), (153, 14329), (155, 14347), (157, 14356), (159, 14383), (161, 14392), (167, 14425),

Gene: Gravel_19 Start: 14537, Stop: 15787, Start Num: 6

Candidate Starts for Gravel_19:

(Start: 6 @14537 has 105 MA's), (16, 14603), (22, 14645), (28, 14708), (32, 14753), (36, 14786), (57, 14948), (58, 14951), (77, 15071), (81, 15092), (85, 15119), (87, 15131), (88, 15137), (93, 15176), (97, 15212), (103, 15260), (125, 15410), (129, 15434), (140, 15557), (141, 15569), (143, 15578), (146, 15611), (148, 15617), (151, 15632), (154, 15653), (156, 15668), (157, 15674), (158, 15680), (159, 15701), (161, 15710), (167, 15743),

Gene: GumGum_21 Start: 15572, Stop: 16873, Start Num: 6

Candidate Starts for GumGum_21:

(Start: 6 @15572 has 105 MA's), (25, 15731), (31, 15776), (39, 15833), (52, 15941), (57, 15983), (64, 16019), (67, 16037), (82, 16127), (92, 16202), (97, 16241), (98, 16259), (104, 16292), (115, 16364), (140, 16562), (141, 16574), (143, 16583), (160, 16712), (163, 16724), (166, 16745), (168, 16757), (174, 16820),

Gene: HamCheese_17 Start: 12931, Stop: 14175, Start Num: 6

Candidate Starts for HamCheese_17:

(Start: 6 @12931 has 105 MA's), (19, 13024), (23, 13045), (25, 13090), (30, 13114), (38, 13186), (56, 13342), (57, 13345), (58, 13348), (59, 13363), (60, 13366), (61, 13372), (74, 13453), (81, 13489), (85, 13516), (93, 13573), (97, 13609), (102, 13651), (105, 13666), (116, 13741), (120, 13783), (121, 13789), (128, 13816), (129, 13828), (131, 13855), (146, 14005), (148, 14011), (153, 14041), (157, 14068), (159, 14095), (161, 14104), (167, 14137), (171, 14167),

Gene: HannahPhantana_19 Start: 13380, Stop: 14633, Start Num: 6

Candidate Starts for HannahPhantana_19:

(Start: 6 @13380 has 105 MA's), (7, 13383), (11, 13404), (19, 13473), (25, 13539), (27, 13548), (38, 13635), (40, 13650), (57, 13794), (58, 13797), (59, 13812), (60, 13815), (61, 13821), (79, 13926), (81, 13938), (87, 13977), (93, 14022), (97, 14058), (102, 14100), (105, 14115), (117, 14193), (125, 14256), (129, 14280), (146, 14457), (153, 14493), (155, 14511), (157, 14520), (159, 14547), (161, 14556),

(167, 14589),

Gene: Henrique_20 Start: 15646, Stop: 16947, Start Num: 6

Candidate Starts for Henrique_20:

(Start: 6 @15646 has 105 MA's), (9, 15664), (25, 15805), (52, 16015), (57, 16057), (64, 16093), (85, 16222), (87, 16234), (90, 16249), (92, 16276), (94, 16285), (97, 16315), (98, 16333), (104, 16366), (110, 16396), (114, 16429), (115, 16438), (135, 16576), (140, 16636), (141, 16648), (155, 16744), (160, 16786), (163, 16798), (174, 16894),

Gene: Hestia_21 Start: 15801, Stop: 17102, Start Num: 6

Candidate Starts for Hestia_21:

(Start: 6 @15801 has 105 MA's), (39, 16062), (52, 16170), (57, 16212), (64, 16248), (67, 16266), (82, 16356), (92, 16431), (97, 16470), (98, 16488), (104, 16521), (115, 16593), (140, 16791), (141, 16803), (143, 16812), (160, 16941), (163, 16953), (166, 16974), (168, 16986), (174, 17049),

Gene: Hillester_21 Start: 15623, Stop: 16924, Start Num: 6

Candidate Starts for Hillester_21:

(Start: 6 @15623 has 105 MA's), (35, 15860), (39, 15884), (44, 15911), (48, 15962), (52, 15992), (57, 16034), (60, 16055), (64, 16070), (67, 16088), (92, 16253), (97, 16292), (98, 16310), (104, 16343), (115, 16415), (140, 16613), (141, 16625), (143, 16634), (144, 16649), (160, 16763), (163, 16775), (166, 16796), (168, 16808), (174, 16871),

Gene: HotPotato_20 Start: 15629, Stop: 16930, Start Num: 6

Candidate Starts for HotPotato_20:

(Start: 6 @15629 has 105 MA's), (9, 15647), (25, 15788), (52, 15998), (57, 16040), (64, 16076), (87, 16217), (90, 16232), (92, 16259), (97, 16298), (98, 16316), (104, 16349), (115, 16421), (135, 16559), (140, 16619), (141, 16631), (155, 16727), (160, 16769), (163, 16781), (174, 16877),

Gene: Isolde_21 Start: 15458, Stop: 16759, Start Num: 6

Candidate Starts for Isolde_21:

(Start: 6 @15458 has 105 MA's), (39, 15719), (52, 15827), (57, 15869), (64, 15905), (67, 15923), (82, 16013), (92, 16088), (97, 16127), (98, 16145), (104, 16178), (115, 16250), (140, 16448), (141, 16460), (143, 16469), (144, 16484), (160, 16598), (163, 16610), (166, 16631), (168, 16643), (174, 16706),

Gene: JakeTheSnake_21 Start: 15524, Stop: 16825, Start Num: 6

Candidate Starts for JakeTheSnake_21:

(Start: 6 @15524 has 105 MA's), (25, 15683), (57, 15935), (61, 15962), (74, 16037), (87, 16112), (89, 16124), (90, 16127), (97, 16193), (98, 16211), (103, 16241), (115, 16316), (140, 16514), (160, 16664), (163, 16676), (174, 16772),

Gene: Jamun_18 Start: 14074, Stop: 15324, Start Num: 6

Candidate Starts for Jamun_18:

(Start: 6 @14074 has 105 MA's), (12, 14107), (16, 14140), (24, 14203), (25, 14233), (36, 14323), (44, 14362), (50, 14422), (53, 14446), (54, 14461), (57, 14485), (58, 14488), (60, 14506), (74, 14593), (79, 14617), (81, 14629), (85, 14656), (93, 14713), (97, 14749), (103, 14797), (117, 14884), (125, 14947), (129, 14971), (134, 15025), (136, 15043), (144, 15130), (146, 15148), (153, 15184), (156, 15205), (157, 15211), (159, 15238), (161, 15247), (167, 15280),

Gene: JellyBread_21 Start: 15616, Stop: 16917, Start Num: 6

Candidate Starts for JellyBread_21:

(Start: 6 @15616 has 105 MA's), (35, 15853), (39, 15877), (44, 15904), (48, 15955), (52, 15985), (57, 16027), (60, 16048), (64, 16063), (67, 16081), (92, 16246), (97, 16285), (98, 16303), (104, 16336), (115, 16408), (140, 16606), (141, 16618), (143, 16627), (144, 16642), (160, 16756), (163, 16768),

(166, 16789), (168, 16801), (174, 16864),

Gene: Jerole_19 Start: 13377, Stop: 14630, Start Num: 6

Candidate Starts for Jerole_19:

(Start: 6 @13377 has 105 MA's), (7, 13380), (11, 13401), (19, 13470), (25, 13536), (27, 13545), (38, 13632), (40, 13647), (57, 13791), (58, 13794), (59, 13809), (60, 13812), (61, 13818), (79, 13923), (81, 13935), (87, 13974), (93, 14019), (97, 14055), (102, 14097), (105, 14112), (117, 14190), (125, 14253), (129, 14277), (146, 14454), (153, 14490), (155, 14508), (157, 14517), (159, 14544), (161, 14553), (167, 14586),

Gene: Judy_21 Start: 15938, Stop: 17239, Start Num: 6

Candidate Starts for Judy_21:

(Start: 6 @15938 has 105 MA's), (9, 15956), (25, 16097), (52, 16307), (57, 16349), (64, 16385), (75, 16454), (87, 16526), (90, 16541), (92, 16568), (97, 16607), (98, 16625), (103, 16655), (106, 16667), (115, 16730), (135, 16868), (140, 16928), (141, 16940), (155, 17036), (160, 17078), (163, 17090), (174, 17186),

Gene: Juno112_17 Start: 12932, Stop: 14176, Start Num: 6

Candidate Starts for Juno112_17:

(Start: 6 @12932 has 105 MA's), (19, 13025), (23, 13046), (25, 13091), (30, 13115), (38, 13187), (40, 13202), (56, 13343), (57, 13346), (58, 13349), (59, 13364), (60, 13367), (61, 13373), (74, 13454), (79, 13478), (81, 13490), (85, 13517), (93, 13574), (97, 13610), (102, 13652), (105, 13667), (116, 13742), (120, 13784), (121, 13790), (128, 13817), (129, 13829), (131, 13856), (146, 14006), (148, 14012), (153, 14042), (157, 14069), (159, 14096), (161, 14105), (167, 14138), (171, 14168),

Gene: KHumphrey_17 Start: 12929, Stop: 14173, Start Num: 6

Candidate Starts for KHumphrey_17:

(Start: 6 @12929 has 105 MA's), (19, 13022), (23, 13043), (25, 13088), (30, 13112), (38, 13184), (56, 13340), (57, 13343), (58, 13346), (59, 13361), (60, 13364), (61, 13370), (74, 13451), (79, 13475), (81, 13487), (85, 13514), (93, 13571), (97, 13607), (102, 13649), (105, 13664), (116, 13739), (120, 13781), (121, 13787), (128, 13814), (129, 13826), (131, 13853), (146, 14003), (148, 14009), (153, 14039), (157, 14066), (159, 14093), (161, 14102), (167, 14135), (171, 14165),

Gene: Kabloowy_21 Start: 15812, Stop: 17113, Start Num: 6

Candidate Starts for Kabloowy_21:

(Start: 6 @15812 has 105 MA's), (12, 15845), (39, 16073), (52, 16181), (57, 16223), (60, 16244), (64, 16259), (67, 16277), (82, 16367), (92, 16442), (97, 16481), (98, 16499), (104, 16532), (115, 16604), (140, 16802), (143, 16823), (144, 16838), (160, 16952), (163, 16964), (166, 16985), (168, 16997), (174, 17060),

Gene: Karkharias_20 Start: 15625, Stop: 16926, Start Num: 6

Candidate Starts for Karkharias_20:

(Start: 6 @15625 has 105 MA's), (9, 15643), (15, 15685), (25, 15784), (52, 15994), (57, 16036), (64, 16072), (85, 16201), (87, 16213), (90, 16228), (92, 16255), (94, 16264), (97, 16294), (98, 16312), (104, 16345), (110, 16375), (114, 16408), (115, 16417), (135, 16555), (140, 16615), (141, 16627), (155, 16723), (160, 16765), (163, 16777), (168, 16810), (174, 16873),

Gene: KayMoney_20 Start: 15529, Stop: 16830, Start Num: 6

Candidate Starts for KayMoney_20:

(Start: 6 @15529 has 105 MA's), (9, 15547), (25, 15688), (32, 15745), (35, 15766), (57, 15940), (63, 15973), (64, 15976), (90, 16132), (97, 16198), (98, 16216), (103, 16246), (104, 16249), (115, 16321), (129, 16396), (140, 16519), (141, 16531), (155, 16627), (160, 16669), (163, 16681), (174, 16777),

Gene: KendraB23_19 Start: 14538, Stop: 15788, Start Num: 6

Candidate Starts for KendraB23_19:

(Start: 6 @14538 has 105 MA's), (16, 14604), (22, 14646), (28, 14709), (32, 14754), (36, 14787), (57, 14949), (58, 14952), (77, 15072), (81, 15093), (85, 15120), (87, 15132), (88, 15138), (93, 15177), (97, 15213), (103, 15261), (125, 15411), (129, 15435), (140, 15558), (141, 15570), (143, 15579), (146, 15612), (148, 15618), (151, 15633), (154, 15654), (156, 15669), (157, 15675), (158, 15681), (159, 15702), (161, 15711), (167, 15744),

Gene: Kepler_18 Start: 13215, Stop: 14468, Start Num: 6

Candidate Starts for Kepler_18:

(Start: 6 @13215 has 105 MA's), (7, 13218), (11, 13239), (19, 13308), (25, 13374), (27, 13383), (38, 13470), (40, 13485), (57, 13629), (58, 13632), (59, 13647), (60, 13650), (61, 13656), (79, 13761), (81, 13773), (87, 13812), (93, 13857), (97, 13893), (102, 13935), (105, 13950), (117, 14028), (125, 14091), (129, 14115), (146, 14292), (153, 14328), (155, 14346), (157, 14355), (159, 14382), (161, 14391), (167, 14424),

Gene: Kharcho_45 Start: 24006, Stop: 25181, Start Num: 6

Candidate Starts for Kharcho_45:

(1, 23298), (2, 23742), (3, 23829), (Start: 6 @24006 has 105 MA's), (10, 24027), (13, 24042), (26, 24156), (33, 24213), (35, 24231), (40, 24264), (56, 24351), (66, 24405), (68, 24411), (81, 24495), (83, 24504), (91, 24573), (92, 24582), (95, 24594), (96, 24603), (107, 24696), (109, 24705), (119, 24783), (120, 24789), (140, 24945), (141, 24957), (146, 24999), (149, 25008), (161, 25098), (165, 25122),

Gene: Kovu_67 Start: 42081, Stop: 43256, Start Num: 6

Candidate Starts for Kovu_67:

(3, 41904), (Start: 6 @42081 has 105 MA's), (10, 42102), (17, 42150), (21, 42183), (33, 42288), (41, 42348), (43, 42351), (49, 42405), (58, 42432), (66, 42480), (81, 42570), (82, 42576), (89, 42627), (91, 42648), (92, 42657), (95, 42669), (96, 42678), (119, 42858), (120, 42864), (132, 42930), (140, 43020), (142, 43038), (161, 43173), (163, 43179), (165, 43197), (170, 43227),

Gene: Kuleana_18 Start: 13395, Stop: 14642, Start Num: 6

Candidate Starts for Kuleana_18:

(Start: 6 @13395 has 105 MA's), (19, 13488), (20, 13491), (22, 13503), (23, 13509), (25, 13554), (27, 13563), (29, 13572), (34, 13626), (42, 13680), (58, 13812), (60, 13830), (61, 13836), (81, 13953), (89, 14001), (93, 14034), (97, 14070), (100, 14106), (103, 14118), (108, 14148), (115, 14196), (120, 14247), (123, 14259), (129, 14292), (144, 14451), (146, 14469), (148, 14475), (151, 14490), (157, 14532), (158, 14538), (159, 14559), (161, 14568), (162, 14571), (172, 14637),

Gene: Laphuphu24k_17 Start: 12931, Stop: 14175, Start Num: 6

Candidate Starts for Laphuphu24k_17:

(Start: 6 @12931 has 105 MA's), (19, 13024), (23, 13045), (25, 13090), (30, 13114), (38, 13186), (56, 13342), (57, 13345), (58, 13348), (59, 13363), (60, 13366), (61, 13372), (74, 13453), (81, 13489), (85, 13516), (93, 13573), (97, 13609), (102, 13651), (105, 13666), (116, 13741), (120, 13783), (121, 13789), (128, 13816), (129, 13828), (131, 13855), (146, 14005), (148, 14011), (153, 14041), (157, 14068), (159, 14095), (161, 14104), (167, 14137), (171, 14167),

Gene: Laroye_69 Start: 41604, Stop: 42773, Start Num: 6

Candidate Starts for Laroye_69:

(Start: 6 @41604 has 105 MA's), (8, 41613), (10, 41625), (14, 41652), (21, 41709), (23, 41715), (33, 41814), (35, 41832), (36, 41844), (40, 41865), (58, 41958), (61, 41982), (66, 42006), (70, 42027), (84, 42120), (85, 42123), (86, 42129), (87, 42135), (89, 42147), (91, 42168), (97, 42216), (101, 42255), (109, 42300), (122, 42393), (126, 42399), (132, 42450), (145, 42582), (146, 42594), (161, 42693), (167, 42726),

Gene: Lasker_21 Start: 15631, Stop: 16932, Start Num: 6

Candidate Starts for Lasker_21:

(Start: 6 @15631 has 105 MA's), (31, 15835), (35, 15868), (39, 15892), (47, 15940), (48, 15970), (52, 16000), (57, 16042), (64, 16078), (67, 16096), (92, 16261), (97, 16300), (98, 16318), (104, 16351), (115, 16423), (140, 16621), (141, 16633), (160, 16771), (163, 16783), (166, 16804), (168, 16816), (174, 16879),

Gene: Lawnathon_21 Start: 15552, Stop: 16853, Start Num: 6

Candidate Starts for Lawnathon_21:

(Start: 6 @15552 has 105 MA's), (39, 15813), (52, 15921), (57, 15963), (64, 15999), (67, 16017), (82, 16107), (92, 16182), (97, 16221), (98, 16239), (104, 16272), (115, 16344), (140, 16542), (141, 16554), (143, 16563), (144, 16578), (160, 16692), (163, 16704), (166, 16725), (168, 16737), (174, 16800),

Gene: LeBruni_21 Start: 15423, Stop: 16724, Start Num: 6

Candidate Starts for LeBruni_21:

(4, 15246), (5, 15249), (Start: 6 @15423 has 105 MA's), (9, 15441), (15, 15483), (25, 15582), (32, 15639), (47, 15732), (50, 15771), (57, 15834), (60, 15855), (62, 15864), (82, 15978), (83, 15981), (84, 15996), (87, 16011), (89, 16023), (94, 16062), (97, 16092), (98, 16110), (103, 16140), (104, 16143), (106, 16152), (115, 16215), (131, 16317), (135, 16353), (155, 16521), (160, 16563), (174, 16671),

Gene: Leona_17 Start: 12982, Stop: 14229, Start Num: 6

Candidate Starts for Leona_17:

(Start: 6 @12982 has 105 MA's), (19, 13075), (23, 13096), (25, 13141), (30, 13165), (38, 13237), (56, 13393), (57, 13396), (58, 13399), (59, 13414), (60, 13417), (74, 13504), (79, 13528), (81, 13540), (85, 13567), (93, 13624), (97, 13660), (105, 13717), (116, 13792), (120, 13834), (121, 13840), (128, 13867), (129, 13879), (131, 13906), (146, 14056), (148, 14062), (153, 14092), (157, 14119), (159, 14146), (161, 14155), (167, 14188), (171, 14218), (173, 14224),

Gene: LiSara_66 Start: 41766, Stop: 42935, Start Num: 6

Candidate Starts for LiSara_66:

(Start: 6 @41766 has 105 MA's), (8, 41775), (10, 41787), (14, 41814), (21, 41871), (23, 41877), (33, 41976), (35, 41994), (36, 42006), (40, 42027), (58, 42120), (61, 42144), (66, 42168), (70, 42189), (84, 42282), (85, 42285), (86, 42291), (87, 42297), (89, 42309), (91, 42330), (97, 42378), (101, 42417), (109, 42462), (122, 42555), (126, 42561), (132, 42612), (145, 42744), (146, 42756), (161, 42855), (167, 42888),

Gene: LilyBell_20 Start: 15641, Stop: 16942, Start Num: 6

Candidate Starts for LilyBell_20:

(Start: 6 @15641 has 105 MA's), (9, 15659), (25, 15800), (52, 16010), (57, 16052), (64, 16088), (75, 16157), (87, 16229), (90, 16244), (92, 16271), (97, 16310), (98, 16328), (103, 16358), (104, 16361), (106, 16370), (115, 16433), (135, 16571), (140, 16631), (141, 16643), (155, 16739), (160, 16781), (163, 16793), (174, 16889),

Gene: LittleRon_20 Start: 15499, Stop: 16800, Start Num: 6

Candidate Starts for LittleRon_20:

(Start: 6 @15499 has 105 MA's), (9, 15517), (25, 15658), (32, 15715), (35, 15736), (57, 15910), (63, 15943), (64, 15946), (90, 16102), (97, 16168), (98, 16186), (103, 16216), (104, 16219), (115, 16291), (140, 16489), (141, 16501), (155, 16597), (160, 16639), (163, 16651), (174, 16747),

Gene: LittleTokyo_18 Start: 13345, Stop: 14595, Start Num: 6

Candidate Starts for LittleTokyo_18:

(Start: 6 @13345 has 105 MA's), (19, 13438), (22, 13453), (25, 13504), (27, 13513), (35, 13582), (37, 13597), (54, 13735), (56, 13756), (57, 13759), (58, 13762), (60, 13780), (61, 13786), (74, 13867), (81, 13903), (84, 13924), (85, 13927), (87, 13939), (89, 13951), (92, 13981), (93, 13984), (97, 14020), (144, 14401), (146, 14419), (148, 14425), (151, 14440), (157, 14482), (159, 14509), (161, 14518), (162, 14521), (169, 14572),

Gene: Lunar_19 Start: 13377, Stop: 14630, Start Num: 6

Candidate Starts for Lunar_19:

(Start: 6 @13377 has 105 MA's), (7, 13380), (11, 13401), (19, 13470), (25, 13536), (27, 13545), (38, 13632), (40, 13647), (57, 13791), (58, 13794), (59, 13809), (60, 13812), (61, 13818), (79, 13923), (81, 13935), (87, 13974), (93, 14019), (97, 14055), (102, 14097), (105, 14112), (117, 14190), (125, 14253), (129, 14277), (146, 14454), (153, 14490), (155, 14508), (157, 14517), (159, 14544), (161, 14553), (167, 14586),

Gene: MUWow_20 Start: 15716, Stop: 17017, Start Num: 6

Candidate Starts for MUWow_20:

(Start: 6 @15716 has 105 MA's), (35, 15953), (39, 15977), (44, 16004), (48, 16055), (52, 16085), (57, 16127), (64, 16163), (67, 16181), (82, 16271), (92, 16346), (97, 16385), (98, 16403), (104, 16436), (115, 16508), (140, 16706), (141, 16718), (143, 16727), (152, 16793), (160, 16856), (163, 16868), (166, 16889), (168, 16901), (174, 16964),

Gene: Mapleville_20 Start: 15622, Stop: 16923, Start Num: 6

Candidate Starts for Mapleville_20:

(Start: 6 @15622 has 105 MA's), (39, 15883), (52, 15991), (57, 16033), (64, 16069), (67, 16087), (82, 16177), (92, 16252), (97, 16291), (98, 16309), (104, 16342), (115, 16414), (140, 16612), (141, 16624), (143, 16633), (144, 16648), (160, 16762), (163, 16774), (166, 16795), (168, 16807), (174, 16870),

Gene: MaterMagnus_21 Start: 15624, Stop: 16925, Start Num: 6

Candidate Starts for MaterMagnus_21:

(Start: 6 @15624 has 105 MA's), (39, 15885), (52, 15993), (57, 16035), (64, 16071), (67, 16089), (82, 16179), (92, 16254), (97, 16293), (98, 16311), (104, 16344), (115, 16416), (140, 16614), (141, 16626), (143, 16635), (152, 16701), (160, 16764), (163, 16776), (166, 16797), (168, 16809), (174, 16872),

Gene: Melons_19 Start: 13377, Stop: 14630, Start Num: 6

Candidate Starts for Melons_19:

(Start: 6 @13377 has 105 MA's), (7, 13380), (11, 13401), (19, 13470), (25, 13536), (27, 13545), (38, 13632), (40, 13647), (57, 13791), (58, 13794), (59, 13809), (60, 13812), (61, 13818), (79, 13923), (81, 13935), (87, 13974), (93, 14019), (97, 14055), (102, 14097), (105, 14112), (117, 14190), (125, 14253), (129, 14277), (146, 14454), (153, 14490), (155, 14508), (157, 14517), (159, 14544), (161, 14553), (167, 14586),

Gene: MidnightRain_21 Start: 15622, Stop: 16923, Start Num: 6

Candidate Starts for MidnightRain_21:

(Start: 6 @15622 has 105 MA's), (31, 15826), (35, 15859), (39, 15883), (47, 15931), (48, 15961), (52, 15991), (57, 16033), (64, 16069), (67, 16087), (82, 16177), (92, 16252), (97, 16291), (98, 16309), (104, 16342), (115, 16414), (140, 16612), (141, 16624), (160, 16762), (163, 16774), (166, 16795), (168, 16807), (174, 16870),

Gene: MurphyJoseph_21 Start: 15707, Stop: 17008, Start Num: 6

Candidate Starts for MurphyJoseph_21:

(Start: 6 @15707 has 105 MA's), (9, 15725), (12, 15740), (22, 15815), (25, 15866), (35, 15944), (47, 16016), (57, 16118), (60, 16139), (64, 16154), (78, 16241), (83, 16265), (87, 16295), (90, 16310), (92, 16337), (97, 16376), (98, 16394), (99, 16409), (104, 16427), (115, 16499), (116, 16505), (131, 16601),

(140, 16697), (155, 16805), (160, 16847), (163, 16859), (174, 16955),

Gene: NewKitty_22 Start: 15853, Stop: 17154, Start Num: 6

Candidate Starts for NewKitty_22:

(Start: 6 @15853 has 105 MA's), (31, 16057), (35, 16090), (39, 16114), (47, 16162), (48, 16192), (52, 16222), (57, 16264), (64, 16300), (67, 16318), (74, 16366), (92, 16483), (97, 16522), (98, 16540), (104, 16573), (115, 16645), (140, 16843), (141, 16855), (143, 16864), (160, 16993), (163, 17005), (166, 17026), (168, 17038), (174, 17101),

Gene: Niblet_18 Start: 14417, Stop: 15667, Start Num: 6

Candidate Starts for Niblet_18:

(Start: 6 @14417 has 105 MA's), (12, 14450), (16, 14483), (22, 14525), (27, 14585), (30, 14600), (36, 14666), (57, 14828), (58, 14831), (81, 14972), (87, 15011), (88, 15017), (93, 15056), (97, 15092), (112, 15200), (125, 15290), (129, 15314), (136, 15386), (137, 15401), (140, 15437), (146, 15491), (148, 15497), (150, 15509), (157, 15554), (158, 15560), (159, 15581), (161, 15590),

Gene: NidoQ_20 Start: 15681, Stop: 16982, Start Num: 6

Candidate Starts for NidoQ_20:

(Start: 6 @15681 has 105 MA's), (9, 15699), (25, 15840), (52, 16050), (57, 16092), (64, 16128), (75, 16197), (87, 16269), (90, 16284), (92, 16311), (97, 16350), (98, 16368), (103, 16398), (104, 16401), (106, 16410), (115, 16473), (135, 16611), (140, 16671), (141, 16683), (155, 16779), (160, 16821), (163, 16833), (174, 16929),

Gene: NikkiHotWheels_20 Start: 15642, Stop: 16943, Start Num: 6

Candidate Starts for NikkiHotWheels_20:

(Start: 6 @15642 has 105 MA's), (9, 15660), (25, 15801), (52, 16011), (57, 16053), (60, 16074), (64, 16089), (87, 16230), (90, 16245), (92, 16272), (97, 16311), (98, 16329), (104, 16362), (115, 16434), (135, 16572), (140, 16632), (141, 16644), (155, 16740), (160, 16782), (163, 16794), (174, 16890),

Gene: Nyilah_20 Start: 15613, Stop: 16914, Start Num: 6

Candidate Starts for Nyilah_20:

(Start: 6 @15613 has 105 MA's), (25, 15772), (31, 15817), (39, 15874), (52, 15982), (57, 16024), (64, 16060), (67, 16078), (82, 16168), (92, 16243), (97, 16282), (98, 16300), (104, 16333), (115, 16405), (140, 16603), (143, 16624), (144, 16639), (160, 16753), (163, 16765), (166, 16786), (168, 16798), (174, 16861),

Gene: Oppalora_17 Start: 12929, Stop: 14173, Start Num: 6

Candidate Starts for Oppalora_17:

(Start: 6 @12929 has 105 MA's), (19, 13022), (23, 13043), (25, 13088), (30, 13112), (38, 13184), (40, 13199), (56, 13340), (57, 13343), (58, 13346), (59, 13361), (60, 13364), (61, 13370), (74, 13451), (79, 13475), (81, 13487), (85, 13514), (93, 13571), (97, 13607), (102, 13649), (105, 13664), (116, 13739), (120, 13781), (121, 13787), (128, 13814), (129, 13826), (131, 13853), (146, 14003), (148, 14009), (153, 14039), (157, 14066), (159, 14093), (161, 14102), (167, 14135), (171, 14165),

Gene: Orcanus_18 Start: 14331, Stop: 15581, Start Num: 6

Candidate Starts for Orcanus_18:

(Start: 6 @14331 has 105 MA's), (16, 14397), (22, 14439), (28, 14502), (32, 14547), (36, 14580), (57, 14742), (58, 14745), (72, 14832), (77, 14865), (81, 14886), (85, 14913), (87, 14925), (88, 14931), (93, 14970), (97, 15006), (103, 15054), (114, 15123), (125, 15204), (129, 15228), (140, 15351), (143, 15372), (146, 15405), (148, 15411), (151, 15426), (154, 15447), (156, 15462), (157, 15468), (158, 15474), (159, 15495), (161, 15504), (167, 15537),

Gene: OtsoOtso_18 Start: 13219, Stop: 14472, Start Num: 6

Candidate Starts for OtsoOtso_18:

(Start: 6 @13219 has 105 MA's), (7, 13222), (11, 13243), (19, 13312), (25, 13378), (27, 13387), (38, 13474), (40, 13489), (57, 13633), (58, 13636), (59, 13651), (60, 13654), (61, 13660), (79, 13765), (81, 13777), (87, 13816), (93, 13861), (97, 13897), (102, 13939), (105, 13954), (117, 14032), (125, 14095), (129, 14119), (130, 14125), (146, 14296), (153, 14332), (155, 14350), (157, 14359), (159, 14386), (161, 14395), (167, 14428),

Gene: Ottawa_45 Start: 24004, Stop: 25179, Start Num: 6

Candidate Starts for Ottawa_45:

(1, 23296), (2, 23740), (3, 23827), (Start: 6 @24004 has 105 MA's), (10, 24025), (13, 24040), (26, 24154), (33, 24211), (35, 24229), (40, 24262), (56, 24349), (66, 24403), (68, 24409), (81, 24493), (83, 24502), (91, 24571), (92, 24580), (95, 24592), (96, 24601), (107, 24694), (109, 24703), (119, 24781), (120, 24787), (140, 24943), (141, 24955), (146, 24997), (149, 25006), (161, 25096), (165, 25120),

Gene: Peas_20 Start: 15628, Stop: 16929, Start Num: 6

Candidate Starts for Peas_20:

(Start: 6 @15628 has 105 MA's), (9, 15646), (15, 15688), (25, 15787), (52, 15997), (57, 16039), (64, 16075), (87, 16216), (90, 16231), (92, 16258), (94, 16267), (97, 16297), (98, 16315), (104, 16348), (115, 16420), (135, 16558), (140, 16618), (141, 16630), (155, 16726), (160, 16768), (163, 16780), (174, 16876),

Gene: PeggyLeg03_20 Start: 15667, Stop: 16968, Start Num: 6

Candidate Starts for PeggyLeg03_20:

(Start: 6 @15667 has 105 MA's), (9, 15685), (25, 15826), (52, 16036), (57, 16078), (64, 16114), (75, 16183), (87, 16255), (90, 16270), (92, 16297), (97, 16336), (98, 16354), (103, 16384), (104, 16387), (106, 16396), (115, 16459), (135, 16597), (140, 16657), (141, 16669), (155, 16765), (160, 16807), (163, 16819), (174, 16915),

Gene: Pelletreau_19 Start: 14537, Stop: 15787, Start Num: 6

Candidate Starts for Pelletreau_19:

(Start: 6 @14537 has 105 MA's), (16, 14603), (22, 14645), (28, 14708), (32, 14753), (36, 14786), (57, 14948), (58, 14951), (77, 15071), (81, 15092), (85, 15119), (87, 15131), (88, 15137), (93, 15176), (97, 15212), (103, 15260), (125, 15410), (129, 15434), (140, 15557), (141, 15569), (143, 15578), (146, 15611), (148, 15617), (151, 15632), (154, 15653), (156, 15668), (157, 15674), (158, 15680), (159, 15701), (161, 15710), (167, 15743),

Gene: Persistence_20 Start: 15544, Stop: 16845, Start Num: 6

Candidate Starts for Persistence_20:

(Start: 6 @15544 has 105 MA's), (25, 15703), (40, 15814), (44, 15832), (47, 15853), (52, 15913), (57, 15955), (58, 15958), (67, 16009), (74, 16057), (82, 16099), (84, 16117), (87, 16132), (89, 16144), (90, 16147), (97, 16213), (98, 16231), (99, 16246), (104, 16264), (115, 16336), (130, 16417), (131, 16438), (143, 16555), (155, 16642), (160, 16684), (174, 16792),

Gene: PhirstandPhine_19 Start: 13377, Stop: 14630, Start Num: 6

Candidate Starts for PhirstandPhine_19:

(Start: 6 @13377 has 105 MA's), (7, 13380), (11, 13401), (19, 13470), (25, 13536), (27, 13545), (38, 13632), (40, 13647), (57, 13791), (58, 13794), (59, 13809), (60, 13812), (61, 13818), (79, 13923), (81, 13935), (87, 13974), (93, 14019), (97, 14055), (102, 14097), (105, 14112), (117, 14190), (125, 14253), (129, 14277), (146, 14454), (153, 14490), (155, 14508), (157, 14517), (159, 14544), (161, 14553), (167, 14586),

Gene: PhluffyCoco_17 Start: 12931, Stop: 14175, Start Num: 6

Candidate Starts for PhluffyCoco_17:

(Start: 6 @12931 has 105 MA's), (19, 13024), (23, 13045), (25, 13090), (30, 13114), (38, 13186), (56, 13342), (57, 13345), (58, 13348), (59, 13363), (60, 13366), (61, 13372), (74, 13453), (81, 13489), (85, 13516), (93, 13573), (97, 13609), (102, 13651), (105, 13666), (116, 13741), (120, 13783), (121, 13789), (128, 13816), (129, 13828), (131, 13855), (146, 14005), (148, 14011), (153, 14041), (157, 14068), (159, 14095), (161, 14104), (167, 14137), (171, 14167),

Gene: Phrank15_20 Start: 15557, Stop: 16858, Start Num: 6

Candidate Starts for Phrank15_20:

(Start: 6 @15557 has 105 MA's), (39, 15818), (52, 15926), (57, 15968), (64, 16004), (67, 16022), (82, 16112), (92, 16187), (95, 16199), (97, 16226), (98, 16244), (104, 16277), (115, 16349), (140, 16547), (141, 16559), (143, 16568), (144, 16583), (160, 16697), (163, 16709), (166, 16730), (168, 16742), (174, 16805),

Gene: Pineda_19 Start: 13377, Stop: 14630, Start Num: 6

Candidate Starts for Pineda_19:

(Start: 6 @13377 has 105 MA's), (7, 13380), (11, 13401), (19, 13470), (25, 13536), (27, 13545), (38, 13632), (40, 13647), (57, 13791), (58, 13794), (59, 13809), (60, 13812), (61, 13818), (79, 13923), (81, 13935), (87, 13974), (93, 14019), (97, 14055), (102, 14097), (105, 14112), (117, 14190), (125, 14253), (129, 14277), (146, 14454), (153, 14490), (155, 14508), (157, 14517), (159, 14544), (161, 14553), (167, 14586),

Gene: Polka_18 Start: 13219, Stop: 14472, Start Num: 6

Candidate Starts for Polka_18:

(Start: 6 @13219 has 105 MA's), (7, 13222), (11, 13243), (19, 13312), (25, 13378), (27, 13387), (38, 13474), (40, 13489), (57, 13633), (58, 13636), (59, 13651), (60, 13654), (61, 13660), (79, 13765), (81, 13777), (87, 13816), (93, 13861), (97, 13897), (102, 13939), (105, 13954), (117, 14032), (125, 14095), (129, 14119), (130, 14125), (146, 14296), (153, 14332), (155, 14350), (157, 14359), (159, 14386), (161, 14395), (167, 14428),

Gene: Pucara_20 Start: 15628, Stop: 16929, Start Num: 6

Candidate Starts for Pucara_20:

(Start: 6 @15628 has 105 MA's), (9, 15646), (25, 15787), (52, 15997), (57, 16039), (64, 16075), (87, 16216), (90, 16231), (92, 16258), (94, 16267), (97, 16297), (98, 16315), (104, 16348), (115, 16420), (135, 16558), (140, 16618), (141, 16630), (155, 16726), (160, 16768), (163, 16780), (174, 16876),

Gene: RadFad_21 Start: 15623, Stop: 16924, Start Num: 6

Candidate Starts for RadFad_21:

(Start: 6 @15623 has 105 MA's), (35, 15860), (39, 15884), (44, 15911), (48, 15962), (52, 15992), (57, 16034), (60, 16055), (64, 16070), (67, 16088), (92, 16253), (97, 16292), (98, 16310), (104, 16343), (115, 16415), (140, 16613), (141, 16625), (143, 16634), (144, 16649), (160, 16763), (163, 16775), (166, 16796), (168, 16808), (174, 16871),

Gene: Raphaella_21 Start: 15623, Stop: 16924, Start Num: 6

Candidate Starts for Raphaella_21:

(Start: 6 @15623 has 105 MA's), (35, 15860), (39, 15884), (44, 15911), (48, 15962), (52, 15992), (57, 16034), (60, 16055), (64, 16070), (67, 16088), (92, 16253), (97, 16292), (98, 16310), (104, 16343), (115, 16415), (140, 16613), (141, 16625), (143, 16634), (144, 16649), (160, 16763), (163, 16775), (166, 16796), (168, 16808), (174, 16871),

Gene: Rattail_17 Start: 12982, Stop: 14229, Start Num: 6

Candidate Starts for Rattail_17:

(Start: 6 @12982 has 105 MA's), (19, 13075), (23, 13096), (25, 13141), (30, 13165), (38, 13237), (56, 13393), (57, 13396), (58, 13399), (59, 13414), (60, 13417), (74, 13504), (79, 13528), (81, 13540), (85,

13567), (93, 13624), (97, 13660), (105, 13717), (116, 13792), (120, 13834), (121, 13840), (128, 13867), (129, 13879), (131, 13906), (146, 14056), (148, 14062), (153, 14092), (157, 14119), (159, 14146), (161, 14155), (167, 14188), (171, 14218), (173, 14224),

Gene: RedFox_17 Start: 12931, Stop: 14175, Start Num: 6

Candidate Starts for RedFox_17:

(Start: 6 @12931 has 105 MA's), (19, 13024), (23, 13045), (25, 13090), (30, 13114), (38, 13186), (56, 13342), (57, 13345), (58, 13348), (59, 13363), (60, 13366), (61, 13372), (74, 13453), (79, 13477), (81, 13489), (85, 13516), (93, 13573), (97, 13609), (102, 13651), (105, 13666), (116, 13741), (120, 13783), (121, 13789), (128, 13816), (129, 13828), (131, 13855), (146, 14005), (148, 14011), (153, 14041), (157, 14068), (159, 14095), (161, 14104), (167, 14137), (171, 14167),

Gene: Renna12_18 Start: 13275, Stop: 14519, Start Num: 6

Candidate Starts for Renna12_18:

(Start: 6 @13275 has 105 MA's), (19, 13368), (23, 13389), (25, 13434), (38, 13530), (40, 13545), (56, 13686), (57, 13689), (58, 13692), (59, 13707), (60, 13710), (61, 13716), (74, 13797), (79, 13821), (81, 13833), (85, 13860), (93, 13917), (97, 13953), (102, 13995), (105, 14010), (115, 14079), (116, 14085), (120, 14127), (121, 14133), (128, 14160), (129, 14172), (131, 14199), (146, 14349), (148, 14355), (153, 14385), (157, 14412), (159, 14439), (161, 14448), (167, 14481), (171, 14511),

Gene: Richie_21 Start: 15638, Stop: 16939, Start Num: 6

Candidate Starts for Richie_21:

(Start: 6 @15638 has 105 MA's), (31, 15842), (35, 15875), (39, 15899), (47, 15947), (48, 15977), (52, 16007), (57, 16049), (64, 16085), (67, 16103), (92, 16268), (97, 16307), (98, 16325), (104, 16358), (115, 16430), (140, 16628), (141, 16640), (160, 16778), (163, 16790), (166, 16811), (168, 16823), (174, 16886),

Gene: Ruchi_18 Start: 14614, Stop: 15864, Start Num: 6

Candidate Starts for Ruchi_18:

(Start: 6 @14614 has 105 MA's), (12, 14647), (16, 14680), (24, 14743), (25, 14773), (36, 14863), (44, 14902), (50, 14962), (53, 14986), (54, 15001), (57, 15025), (58, 15028), (60, 15046), (74, 15133), (79, 15157), (81, 15169), (93, 15253), (97, 15289), (103, 15337), (117, 15424), (125, 15487), (129, 15511), (134, 15565), (136, 15583), (144, 15670), (146, 15688), (153, 15724), (156, 15745), (157, 15751), (159, 15778), (161, 15787),

Gene: Sakai_21 Start: 15632, Stop: 16933, Start Num: 6

Candidate Starts for Sakai_21:

(Start: 6 @15632 has 105 MA's), (39, 15893), (44, 15920), (48, 15971), (52, 16001), (57, 16043), (60, 16064), (64, 16079), (67, 16097), (92, 16262), (97, 16301), (98, 16319), (104, 16352), (115, 16424), (140, 16622), (141, 16634), (143, 16643), (144, 16658), (160, 16772), (163, 16784), (166, 16805), (168, 16817), (174, 16880),

Gene: Salgado_69 Start: 41420, Stop: 42589, Start Num: 6

Candidate Starts for Salgado_69:

(Start: 6 @41420 has 105 MA's), (8, 41429), (10, 41441), (14, 41468), (21, 41525), (23, 41531), (33, 41630), (35, 41648), (36, 41660), (40, 41681), (58, 41774), (61, 41798), (66, 41822), (70, 41843), (84, 41936), (86, 41945), (87, 41951), (89, 41963), (91, 41984), (97, 42032), (101, 42071), (109, 42116), (122, 42209), (126, 42215), (132, 42266), (145, 42398), (146, 42410), (161, 42509), (167, 42542),

Gene: Satrap_21 Start: 15544, Stop: 16845, Start Num: 6

Candidate Starts for Satrap_21:

(Start: 6 @15544 has 105 MA's), (18, 15634), (22, 15652), (25, 15703), (29, 15721), (35, 15781), (44, 15832), (50, 15892), (52, 15913), (56, 15952), (57, 15955), (60, 15976), (61, 15982), (64, 15991), (73,

16054), (82, 16099), (87, 16132), (90, 16147), (94, 16183), (97, 16213), (98, 16231), (99, 16246), (104, 16264), (114, 16327), (115, 16336), (131, 16438), (143, 16555), (150, 16606), (155, 16642), (160, 16684), (174, 16792),

Gene: Seahorse_22 Start: 15990, Stop: 17291, Start Num: 6

Candidate Starts for Seahorse_22:

(Start: 6 @15990 has 105 MA's), (9, 16008), (12, 16023), (39, 16251), (52, 16359), (57, 16401), (64, 16437), (67, 16455), (82, 16545), (92, 16620), (97, 16659), (98, 16677), (104, 16710), (115, 16782), (140, 16980), (160, 17130), (163, 17142), (166, 17163), (168, 17175), (174, 17238),

Gene: Shen_19 Start: 14538, Stop: 15788, Start Num: 6

Candidate Starts for Shen_19:

(Start: 6 @14538 has 105 MA's), (16, 14604), (22, 14646), (28, 14709), (32, 14754), (36, 14787), (57, 14949), (58, 14952), (61, 14976), (77, 15072), (81, 15093), (85, 15120), (87, 15132), (88, 15138), (93, 15177), (97, 15213), (103, 15261), (125, 15411), (129, 15435), (140, 15558), (141, 15570), (143, 15579), (146, 15612), (148, 15618), (151, 15633), (154, 15654), (156, 15669), (157, 15675), (158, 15681), (159, 15702), (161, 15711), (167, 15744),

Gene: Shrooms_67 Start: 39941, Stop: 41110, Start Num: 6

Candidate Starts for Shrooms_67:

(Start: 6 @39941 has 105 MA's), (8, 39950), (10, 39962), (21, 40046), (24, 40067), (25, 40091), (29, 40109), (30, 40115), (33, 40151), (35, 40169), (36, 40181), (40, 40202), (44, 40217), (46, 40229), (58, 40295), (70, 40364), (85, 40460), (87, 40472), (89, 40484), (91, 40505), (95, 40526), (96, 40535), (97, 40553), (101, 40592), (118, 40703), (122, 40730), (126, 40736), (132, 40787), (145, 40919), (146, 40931), (155, 40985), (157, 40994), (159, 41021), (161, 41030), (167, 41063),

Gene: Shukran_21 Start: 15544, Stop: 16845, Start Num: 6

Candidate Starts for Shukran_21:

(Start: 6 @15544 has 105 MA's), (18, 15634), (22, 15652), (25, 15703), (29, 15721), (35, 15781), (44, 15832), (50, 15892), (52, 15913), (56, 15952), (57, 15955), (60, 15976), (61, 15982), (64, 15991), (73, 16054), (82, 16099), (87, 16132), (90, 16147), (94, 16183), (97, 16213), (98, 16231), (99, 16246), (104, 16264), (114, 16327), (115, 16336), (131, 16438), (143, 16555), (150, 16606), (155, 16642), (160, 16684), (174, 16792),

Gene: SonDevVon_20 Start: 15625, Stop: 16926, Start Num: 6

Candidate Starts for SonDevVon_20:

(Start: 6 @15625 has 105 MA's), (31, 15829), (35, 15862), (39, 15886), (47, 15934), (48, 15964), (52, 15994), (57, 16036), (64, 16072), (67, 16090), (92, 16255), (94, 16264), (97, 16294), (98, 16312), (104, 16345), (115, 16417), (140, 16615), (141, 16627), (160, 16765), (163, 16777), (166, 16798), (168, 16810), (174, 16873),

Gene: SpicyFrank_21 Start: 15700, Stop: 17001, Start Num: 6

Candidate Starts for SpicyFrank_21:

(Start: 6 @15700 has 105 MA's), (39, 15961), (52, 16069), (57, 16111), (64, 16147), (76, 16225), (97, 16369), (98, 16387), (114, 16483), (115, 16492), (135, 16630), (140, 16690), (143, 16711), (160, 16840), (163, 16852), (174, 16948),

Gene: Sporco_22 Start: 15680, Stop: 16981, Start Num: 6

Candidate Starts for Sporco_22:

(Start: 6 @15680 has 105 MA's), (35, 15917), (39, 15941), (44, 15968), (48, 16019), (52, 16049), (57, 16091), (60, 16112), (64, 16127), (67, 16145), (92, 16310), (97, 16349), (98, 16367), (104, 16400), (115, 16472), (140, 16670), (141, 16682), (143, 16691), (144, 16706), (160, 16820), (163, 16832), (166, 16853), (168, 16865), (174, 16928),

Gene: StuartMinion_17 Start: 12969, Stop: 14216, Start Num: 6

Candidate Starts for StuartMinion_17:

(Start: 6 @12969 has 105 MA's), (19, 13062), (23, 13083), (25, 13128), (30, 13152), (38, 13224), (40, 13239), (56, 13380), (57, 13383), (58, 13386), (59, 13401), (60, 13404), (61, 13410), (74, 13491), (82, 13533), (85, 13554), (93, 13611), (97, 13647), (102, 13689), (103, 13695), (105, 13704), (115, 13773), (116, 13779), (121, 13827), (128, 13854), (129, 13866), (130, 13872), (131, 13893), (146, 14043), (148, 14049), (153, 14079), (157, 14106), (159, 14133), (161, 14142), (167, 14175),

Gene: TaylorSipt_18 Start: 13348, Stop: 14598, Start Num: 6

Candidate Starts for TaylorSipt_18:

(Start: 6 @13348 has 105 MA's), (12, 13381), (16, 13414), (19, 13441), (28, 13519), (36, 13597), (50, 13696), (57, 13759), (58, 13762), (60, 13780), (72, 13849), (77, 13882), (81, 13903), (84, 13927), (85, 13930), (87, 13942), (88, 13948), (93, 13987), (97, 14023), (103, 14071), (105, 14080), (112, 14131), (113, 14137), (125, 14221), (129, 14245), (140, 14368), (146, 14422), (147, 14425), (150, 14440), (154, 14464), (159, 14512), (161, 14521), (163, 14527),

Gene: ThayneTheZag_21 Start: 15791, Stop: 17092, Start Num: 6

Candidate Starts for ThayneTheZag_21:

(Start: 6 @15791 has 105 MA's), (9, 15809), (25, 15950), (56, 16199), (57, 16202), (60, 16223), (64, 16238), (83, 16349), (87, 16379), (90, 16394), (94, 16430), (97, 16460), (98, 16478), (99, 16493), (103, 16508), (104, 16511), (106, 16520), (115, 16583), (131, 16685), (155, 16889), (160, 16931), (163, 16943), (174, 17039),

Gene: Tiff81_22 Start: 15718, Stop: 17019, Start Num: 6

Candidate Starts for Tiff81_22:

(Start: 6 @15718 has 105 MA's), (12, 15751), (39, 15979), (52, 16087), (57, 16129), (64, 16165), (67, 16183), (82, 16273), (92, 16348), (97, 16387), (98, 16405), (104, 16438), (115, 16510), (140, 16708), (160, 16858), (163, 16870), (166, 16891), (168, 16903), (174, 16966),

Gene: Toad24_19 Start: 14538, Stop: 15788, Start Num: 6

Candidate Starts for Toad24_19:

(Start: 6 @14538 has 105 MA's), (16, 14604), (22, 14646), (28, 14709), (32, 14754), (36, 14787), (57, 14949), (58, 14952), (77, 15072), (81, 15093), (85, 15120), (87, 15132), (88, 15138), (93, 15177), (97, 15213), (103, 15261), (125, 15411), (129, 15435), (140, 15558), (141, 15570), (143, 15579), (146, 15612), (148, 15618), (151, 15633), (154, 15654), (156, 15669), (157, 15675), (158, 15681), (159, 15702), (161, 15711), (167, 15744),

Gene: Vopal_22 Start: 15695, Stop: 16996, Start Num: 6

Candidate Starts for Vopal_22:

(Start: 6 @15695 has 105 MA's), (35, 15932), (39, 15956), (44, 15983), (48, 16034), (52, 16064), (57, 16106), (60, 16127), (64, 16142), (67, 16160), (92, 16325), (97, 16364), (98, 16382), (104, 16415), (115, 16487), (140, 16685), (141, 16697), (143, 16706), (144, 16721), (160, 16835), (163, 16847), (166, 16868), (168, 16880), (174, 16943),

Gene: Vulpecula_18 Start: 14072, Stop: 15322, Start Num: 6

Candidate Starts for Vulpecula_18:

(Start: 6 @14072 has 105 MA's), (12, 14105), (16, 14138), (24, 14201), (25, 14231), (28, 14243), (36, 14321), (44, 14360), (50, 14420), (53, 14444), (54, 14459), (57, 14483), (58, 14486), (60, 14504), (74, 14591), (79, 14615), (81, 14627), (93, 14711), (97, 14747), (103, 14795), (117, 14882), (125, 14945), (128, 14957), (129, 14969), (134, 15023), (136, 15041), (144, 15128), (146, 15146), (153, 15182), (156, 15203), (157, 15209), (159, 15236), (161, 15245), (167, 15278),

Gene: Waltz_66 Start: 39954, Stop: 41123, Start Num: 6

Candidate Starts for Waltz_66:

(Start: 6 @39954 has 105 MA's), (8, 39963), (10, 39975), (20, 40050), (29, 40122), (31, 40149), (33, 40164), (35, 40182), (36, 40194), (44, 40230), (45, 40236), (46, 40242), (58, 40308), (70, 40377), (85, 40473), (87, 40485), (89, 40497), (91, 40518), (95, 40539), (97, 40566), (126, 40749), (140, 40890), (141, 40902), (144, 40926), (146, 40944), (151, 40965), (155, 40998), (157, 41007), (159, 41034), (161, 41043), (163, 41049), (165, 41067), (167, 41076),

Gene: Westrich_19 Start: 14526, Stop: 15797, Start Num: 6

Candidate Starts for Westrich_19:

(Start: 6 @14526 has 105 MA's), (16, 14592), (22, 14634), (28, 14697), (32, 14742), (36, 14775), (57, 14937), (58, 14940), (77, 15060), (81, 15081), (85, 15108), (87, 15120), (88, 15126), (93, 15165), (97, 15201), (103, 15249), (125, 15399), (129, 15423), (140, 15546), (141, 15558), (143, 15567), (146, 15600), (148, 15606), (151, 15621), (154, 15642), (156, 15657), (157, 15663), (158, 15669), (159, 15690), (161, 15699), (167, 15732),

Gene: Wheelbite_65 Start: 41577, Stop: 42746, Start Num: 6

Candidate Starts for Wheelbite_65:

(Start: 6 @41577 has 105 MA's), (8, 41586), (10, 41598), (14, 41625), (21, 41682), (23, 41688), (26, 41730), (33, 41787), (35, 41805), (36, 41817), (58, 41931), (66, 41979), (70, 42000), (71, 42015), (79, 42057), (85, 42096), (87, 42108), (91, 42141), (97, 42189), (101, 42228), (109, 42273), (122, 42366), (139, 42498), (140, 42513), (145, 42555), (146, 42567), (161, 42666), (167, 42699),

Gene: WileyE_17 Start: 13406, Stop: 14656, Start Num: 6

Candidate Starts for WileyE_17:

(Start: 6 @13406 has 105 MA's), (12, 13439), (16, 13472), (24, 13535), (25, 13565), (36, 13655), (44, 13694), (50, 13754), (53, 13778), (54, 13793), (57, 13817), (58, 13820), (60, 13838), (74, 13925), (79, 13949), (81, 13961), (85, 13988), (93, 14045), (97, 14081), (103, 14129), (117, 14216), (125, 14279), (129, 14303), (134, 14357), (136, 14375), (144, 14462), (153, 14516), (156, 14537), (157, 14543), (158, 14549), (159, 14570), (161, 14579), (167, 14612),

Gene: Windest_22 Start: 15679, Stop: 16980, Start Num: 6

Candidate Starts for Windest_22:

(Start: 6 @15679 has 105 MA's), (31, 15883), (35, 15916), (39, 15940), (47, 15988), (48, 16018), (52, 16048), (57, 16090), (64, 16126), (67, 16144), (92, 16309), (97, 16348), (98, 16366), (104, 16399), (115, 16471), (140, 16669), (141, 16681), (160, 16819), (163, 16831), (166, 16852), (168, 16864), (174, 16927),

Gene: YoungHarleezy_21 Start: 15636, Stop: 16937, Start Num: 6

Candidate Starts for YoungHarleezy_21:

(Start: 6 @15636 has 105 MA's), (35, 15873), (39, 15897), (44, 15924), (48, 15975), (52, 16005), (57, 16047), (60, 16068), (64, 16083), (67, 16101), (92, 16266), (97, 16305), (98, 16323), (104, 16356), (115, 16428), (140, 16626), (141, 16638), (143, 16647), (144, 16662), (160, 16776), (163, 16788), (166, 16809), (168, 16821), (174, 16884),

Gene: Zhuangyuan_19 Start: 13779, Stop: 15026, Start Num: 6

Candidate Starts for Zhuangyuan_19:

(Start: 6 @13779 has 105 MA's), (16, 13845), (19, 13872), (20, 13875), (25, 13938), (30, 13962), (42, 14064), (51, 14145), (58, 14196), (60, 14214), (61, 14220), (70, 14265), (74, 14301), (81, 14337), (87, 14373), (89, 14385), (92, 14415), (93, 14418), (97, 14454), (102, 14496), (115, 14580), (116, 14586), (121, 14637), (127, 14661), (130, 14682), (144, 14835), (146, 14853), (157, 14916), (159, 14943), (161, 14952),

Gene: Zixiang_18 Start: 14417, Stop: 15688, Start Num: 6

Candidate Starts for Zixiang_18:

(Start: 6 @14417 has 105 MA's), (12, 14450), (16, 14483), (22, 14525), (27, 14585), (30, 14600), (36, 14666), (57, 14828), (58, 14831), (81, 14972), (87, 15011), (88, 15017), (93, 15056), (97, 15092), (112, 15200), (125, 15290), (129, 15314), (136, 15386), (137, 15401), (140, 15437), (146, 15491), (148, 15497), (150, 15509), (157, 15554), (158, 15560), (159, 15581), (161, 15590),