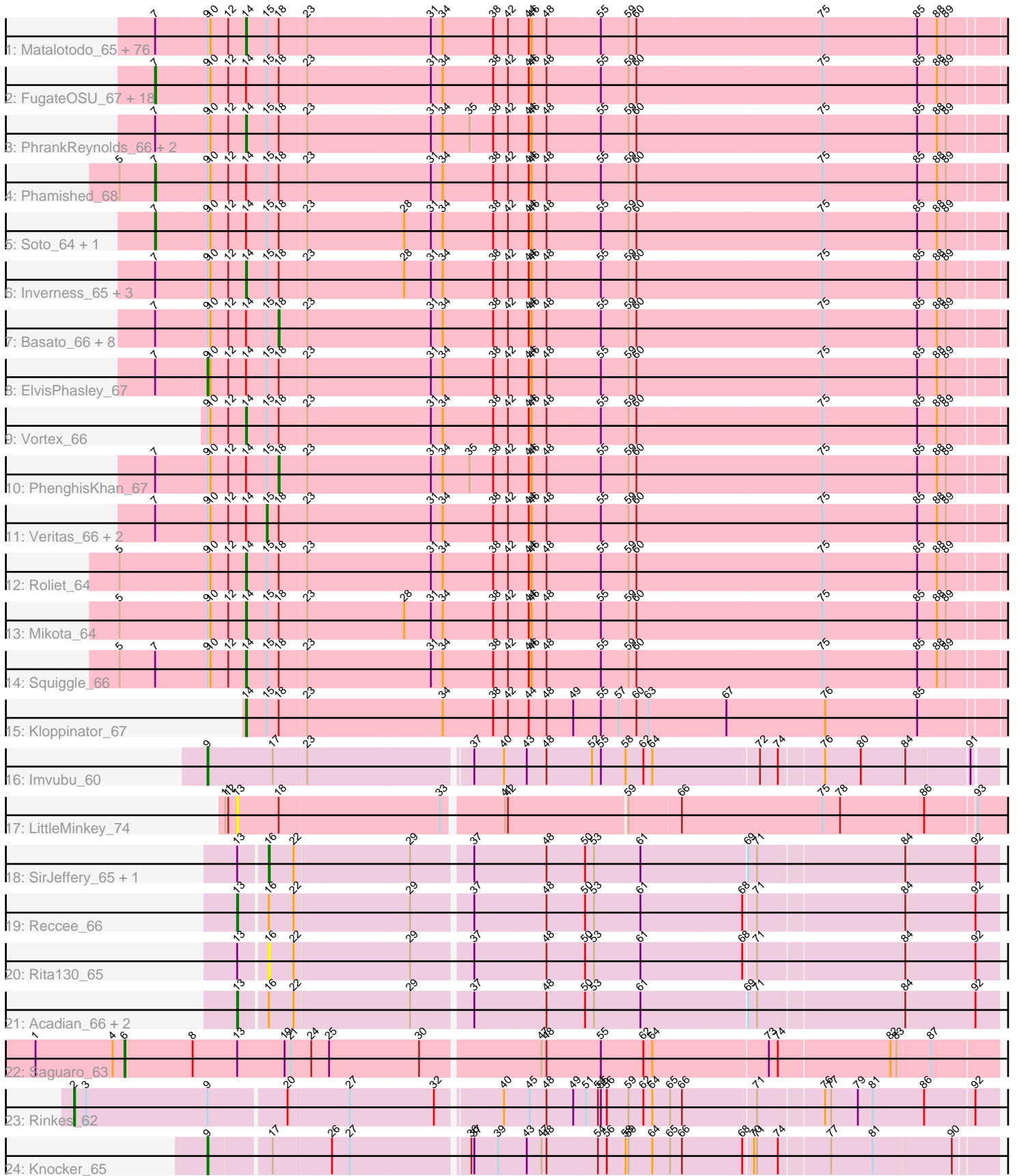


Pham 303183



Note: Tracks are now grouped by subcluster and scaled. Switching in subcluster is indicated by changes in track color. Track scale is now set by default to display the region 30 bp upstream of start 1 to 30 bp downstream of the last possible start. If this default region is judged to be packed too tightly with annotated starts, the track will be further scaled to only show that region of the ORF with annotated starts. This action will be indicated by adding "Zoomed" to the title. For starts, yellow indicates the location of called starts comprised solely of Glimmer/GeneMark auto-annotations, green indicates the location of called starts with at least 1 manual gene annotation.

Pham 303183 Report

This analysis was run 06/08/26 on database version 649.

Pham number 303183 has 137 members, 4 are drafts.

Phages represented in each track:

- Track 1 : Matalotodo_65, Weher20_64, Dati_64, FriarPreacher_65, Murdoc_64, DirtJuice_67, BlueHusk_68, SallyH_69, Mulan_66, Pherdinand_67, MelsMeow_66, Emiris_68, Fang_68, Vista_65, Buckeye_67, Legolas_68, Mana_65, Thora_65, Phareon_65, LemonSlice_67, Gyarad_0066, Morgushi_65, DonSanchon_63, Dingo_64, Nathan_67, Mosaic_64, LeeLot_66, Held_65, YouGoGlencoco_67, Grand2040_65, PhrodoBaggins_68, PinheadLarry_66, Zelda_67, Wallhey_67, Doddsville_65, HighStump_68, RedRaider89_66, TallGrassMM_65, Sophia_65, Surely_67, Etaye_66, Slatt_67, Chorkpop_67, Solosis_65, Phleuron_65, Plmatters_65, Kwksand96_67, Harvey_64, MRabcd_66, Kailash_65, Durga_69, Puhltonio_65, BatteryCK_65, Adriana_68, Zonia_67, Daffy_65, Trypo_68, DuchessDung_66, Melc17_64, Daka_69, MitKao_66, TooFast2Furius_66, Maru_66, AltPhacts_65, Vivaldi_67, Phipps_66, BlackStallion_67, Maskar_67, Potter_64, KingVeVeVe_65, TomBombadil_67, ImtiyazSitla_67, Yoshand_67, Ashraf_67, UncleHowie_64, Scrick_66, CaspiBoi_66
- Track 2 : FugateOSU_67, Podrick_66, Cobra_67, Derpp_67, Mesh1_67, Cher_67, CharlieGBrown_65, Placalicious_67, TyrionL_67, Labeouficaum_67, Haimas_65, MichaelPhcott_65, Iridoclysis_66, Pipsqueak_64, Squid_66, Prickles_68, Pinkman_66, Craff_70, Lego3393_64
- Track 3 : PhrankReynolds_66, Mag7_65, Phergie_67
- Track 4 : Phamished_68
- Track 5 : Soto_64, SDcharge11_66
- Track 6 : Inverness_65, MiniBoss_64, Sheila_63, Horchata_64
- Track 7 : Basato_66, Swish_67, KingTut_58, Oline_66, Banjo_65, SassyCat97_65, Lasso_66, GeneCoco_67, Hamish_64
- Track 8 : ElvisPhasley_67
- Track 9 : Vortex_66
- Track 10 : PhenghisKhan_67
- Track 11 : Veritas_66, FluffyNinja_67, LostAndPhound_66
- Track 12 : Roliet_64
- Track 13 : Mikota_64
- Track 14 : Squiggle_66
- Track 15 : Kloppinator_67
- Track 16 : Imvubu_60
- Track 17 : LittleMinkey_74
- Track 18 : SirJeffery_65, EastView9101_65
- Track 19 : Reccee_66
- Track 20 : Rita130_65

- Track 21 : Acadian_66, Suigeneris_67, Donny_67
- Track 22 : Saguaro_63
- Track 23 : Rinkes_62
- Track 24 : Knocker_65

Summary of Final Annotations (See graph section above for start numbers):

The start number called the most often in the published annotations is 14, it was called in 88 of the 133 non-draft genes in the pham.

Genes that call this "Most Annotated" start:

- Adriana_68, AltPhacts_65, Ashraf_67, BatteryCK_65, BlackStallion_67, BlueHusk_68, Buckeye_67, CaspiBoi_66, Chorkpop_67, Daffy_65, Daka_69, Dati_64, Dingo_64, DirtJuice_67, Doddsville_65, DonSancho_63, DuchessDung_66, Durga_69, Emiris_68, Etaye_66, Fang_68, FriarPreacher_65, Grand2040_65, Gyarad_0066, Harvey_64, Held_65, HighStump_68, Horchata_64, ImtiyazSitla_67, Inverness_65, Kailash_65, KingVeVeVe_65, Kloppinator_67, Kwksand96_67, LeeLot_66, Legolas_68, LemonSlice_67, MRabcd_66, Mag7_65, Mana_65, Maru_66, Maskar_67, Matalotodo_65, Melc17_64, MelsMeow_66, Mikota_64, MiniBoss_64, MitKao_66, Morgushi_65, Mosaic_64, Mulan_66, Murdoc_64, Nathan_67, Phareon_65, Pherdinand_67, Phergie_67, Phipps_66, Phleuron_65, PhrankReynolds_66, PhrodoBaggins_68, PinheadLarry_66, Plmatters_65, Potter_64, Puhltonio_65, RedRaider89_66, Roliet_64, SallyH_69, Scrick_66, Sheila_63, Slatt_67, Solosis_65, Sophia_65, Squiggle_66, Surely_67, TallGrassMM_65, Thora_65, TomBombadil_67, TooFast2Furious_66, Trypo_68, UncleHowie_64, Vista_65, Vivaldi_67, Vortex_66, Wallhey_67, Weher20_64, Yoshand_67, YouGoGlencoco_67, Zelda_67, Zonia_67,

Genes that have the "Most Annotated" start but do not call it:

- Banjo_65, Basato_66, CharlieGBrown_65, Cher_67, Cobra_67, Craff_70, Derpp_67, ElvisPhasley_67, FluffyNinja_67, FugateOSU_67, GeneCoco_67, Haimas_65, Hamish_64, Iridoclysis_66, KingTut_58, Labeoufcaum_67, Lasso_66, Lego3393_64, LostAndPhound_66, Mesh1_67, MichaelPhcott_65, Oline_66, Phamished_68, PhenghisKhan_67, Pinkman_66, Pipsqueak_64, Placalicious_67, Podrick_66, Prickles_68, SDcharge11_66, SassyCat97_65, Soto_64, Squid_66, Swish_67, TyrionL_67, Veritas_66,

Genes that do not have the "Most Annotated" start:

- Acadian_66, Donny_67, EastView9101_65, Imvubu_60, Knocker_65, LittleMinkey_74, Reccee_66, Rinkes_62, Rita130_65, Saguaro_63, SirJeffery_65, Suigeneris_67,

Summary by start number:

Start 2:

- Found in 1 of 137 (0.7%) of genes in pham
- Manual Annotations of this start: 1 of 133
- Called 100.0% of time when present
- Phage (with cluster) where this start called: Rinkes_62 (B9),

Start 6:

- Found in 1 of 137 (0.7%) of genes in pham
- Manual Annotations of this start: 1 of 133
- Called 100.0% of time when present
- Phage (with cluster) where this start called: Saguaro_63 (B7),

Start 7:

- Found in 121 of 137 (88.3%) of genes in pham
- Manual Annotations of this start: 22 of 133
- Called 18.2% of time when present
- Phage (with cluster) where this start called: CharlieGBrown_65 (B1), Cher_67 (B1), Cobra_67 (B1), Craff_70 (B1), Derpp_67 (B1), FugateOSU_67 (B1), Haimas_65 (B1), Iridoclysis_66 (B1), Labeouficaum_67 (B1), Lego3393_64 (B1), Mesh1_67 (B1), MichaelPhcott_65 (B1), Phamished_68 (B1), Pinkman_66 (B1), Pipsqueak_64 (B1), Placalicious_67 (B1), Podrick_66 (B1), Prickles_68 (B1), SDcharge11_66 (B1), Soto_64 (B1), Squid_66 (B1), TyrionL_67 (B1),

Start 9:

- Found in 127 of 137 (92.7%) of genes in pham
- Manual Annotations of this start: 3 of 133
- Called 2.4% of time when present
- Phage (with cluster) where this start called: ElvisPhasley_67 (B1), Imvubu_60 (B10), Knocker_65 (B9),

Start 13:

- Found in 9 of 137 (6.6%) of genes in pham
- Manual Annotations of this start: 4 of 133
- Called 55.6% of time when present
- Phage (with cluster) where this start called: Acadian_66 (B5), Donny_67 (B5), LittleMinkey_74 (B13), Reccee_66 (B5), Suigeneris_67 (B5),

Start 14:

- Found in 125 of 137 (91.2%) of genes in pham
- Manual Annotations of this start: 88 of 133
- Called 71.2% of time when present
- Phage (with cluster) where this start called: Adriana_68 (B1), AltPhacts_65 (B1), Ashraf_67 (B1), BatteryCK_65 (B1), BlackStallion_67 (B1), BlueHusk_68 (B1), Buckeye_67 (B1), CaspiBoi_66 (B1), Chorkpop_67 (B1), Daffy_65 (B1), Daka_69 (B1), Dati_64 (B1), Dingo_64 (B1), DirtJuice_67 (B1), Doddsville_65 (B1), DonSanchon_63 (B1), DuchessDung_66 (B1), Durga_69 (B1), Emiris_68 (B1), Etaye_66 (B1), Fang_68 (B1), FriarPreacher_65 (B1), Grand2040_65 (B1), Gyarad_0066 (B1), Harvey_64 (B1), Held_65 (B1), HighStump_68 (B1), Horchata_64 (B1), ImtiyazSitla_67 (B1), Inverness_65 (B1), Kailash_65 (B1), KingVeVeVe_65 (B1), Kloppinator_67 (B1), Kwksand96_67 (B1), LeeLot_66 (B1), Legolas_68 (B1), LemonSlice_67 (B1), MRabcd_66 (B1), Mag7_65 (B1), Mana_65 (B1), Maru_66 (B1), Maskar_67 (B1), Matalotodo_65 (B1), Melc17_64 (B1), MelsMeow_66 (B1), Mikota_64 (B1), MiniBoss_64 (B1), MitKao_66 (B1), Morgushi_65 (B1), Mosaic_64 (B1), Mulan_66 (B1), Murdoc_64 (B1), Nathan_67 (B1), Phareon_65 (B1), Pherdinand_67 (B1), Phergie_67 (B1), Phipps_66 (B1), Phleuron_65 (B1), PhrankReynolds_66 (B1), PhrodoBaggins_68 (B1), PinheadLarry_66 (B1), Plmatters_65 (B1), Potter_64 (B1), Puhltonio_65 (B1), RedRaider89_66 (B1), Roliet_64 (B1), SallyH_69 (B1), Scrick_66 (B1), Sheila_63 (B1), Slatt_67 (B1), Solosis_65 (B1), Sophia_65 (B1), Squiggle_66 (B1), Surely_67 (B1),

TallGrassMM_65 (B1), Thora_65 (B1), TomBombadil_67 (B1), TooFast2Furius_66 (B1), Trypo_68 (B1), UncleHowie_64 (B1), Vista_65 (B1), Vivaldi_67 (B1), Vortex_66 (B1), Wallhey_67 (B1), Weher20_64 (B1), Yoshand_67 (B1), YouGoGlencoco_67 (B1), Zelda_67 (B1), Zonia_67 (B1),

Start 15:

- Found in 125 of 137 (91.2%) of genes in pham
- Manual Annotations of this start: 3 of 133
- Called 2.4% of time when present
- Phage (with cluster) where this start called: FluffyNinja_67 (B1), LostAndPhound_66 (B1), Veritas_66 (B1),

Start 16:

- Found in 7 of 137 (5.1%) of genes in pham
- Manual Annotations of this start: 1 of 133
- Called 42.9% of time when present
- Phage (with cluster) where this start called: EastView9101_65 (B5), Rita130_65 (B5), SirJeffery_65 (B5),

Start 18:

- Found in 126 of 137 (92.0%) of genes in pham
- Manual Annotations of this start: 10 of 133
- Called 7.9% of time when present
- Phage (with cluster) where this start called: Banjo_65 (B1), Basato_66 (B1), GeneCoco_67 (B1), Hamish_64 (B1), KingTut_58 (B1), Lasso_66 (B1), Oline_66 (B1), PhenghisKhan_67 (B1), SassyCat97_65 (B1), Swish_67 (B1),

Summary by clusters:

There are 6 clusters represented in this pham: B5, B7, B13, B10, B9, B1,

Info for manual annotations of cluster B1:

- Start number 7 was manually annotated 22 times for cluster B1.
- Start number 9 was manually annotated 1 time for cluster B1.
- Start number 14 was manually annotated 88 times for cluster B1.
- Start number 15 was manually annotated 3 times for cluster B1.
- Start number 18 was manually annotated 10 times for cluster B1.

Info for manual annotations of cluster B10:

- Start number 9 was manually annotated 1 time for cluster B10.

Info for manual annotations of cluster B5:

- Start number 13 was manually annotated 4 times for cluster B5.
- Start number 16 was manually annotated 1 time for cluster B5.

Info for manual annotations of cluster B7:

- Start number 6 was manually annotated 1 time for cluster B7.

Info for manual annotations of cluster B9:

- Start number 2 was manually annotated 1 time for cluster B9.
- Start number 9 was manually annotated 1 time for cluster B9.

Gene Information:

Gene: Acadian_66 Start: 57500, Stop: 58237, Start Num: 13

Candidate Starts for Acadian_66:

(Start: 13 @57500 has 4 MA's), (Start: 16 @57527 has 1 MA's), (22, 57551), (29, 57665), (37, 57722), (48, 57794), (50, 57833), (53, 57842), (61, 57887), (69, 57992), (71, 58001), (84, 58145), (92, 58214),

Gene: Adriana_68 Start: 57095, Stop: 57859, Start Num: 14

Candidate Starts for Adriana_68:

(Start: 7 @57005 has 22 MA's), (Start: 9 @57056 has 3 MA's), (10, 57059), (12, 57077), (Start: 14 @57095 has 88 MA's), (Start: 15 @57116 has 3 MA's), (Start: 18 @57128 has 10 MA's), (23, 57155), (31, 57278), (34, 57290), (38, 57341), (42, 57356), (44, 57377), (46, 57380), (48, 57395), (55, 57449), (59, 57476), (60, 57482), (75, 57668), (85, 57764), (88, 57782), (89, 57791),

Gene: AltPhacts_65 Start: 55582, Stop: 56346, Start Num: 14

Candidate Starts for AltPhacts_65:

(Start: 7 @55492 has 22 MA's), (Start: 9 @55543 has 3 MA's), (10, 55546), (12, 55564), (Start: 14 @55582 has 88 MA's), (Start: 15 @55603 has 3 MA's), (Start: 18 @55615 has 10 MA's), (23, 55642), (31, 55765), (34, 55777), (38, 55828), (42, 55843), (44, 55864), (46, 55867), (48, 55882), (55, 55936), (59, 55963), (60, 55969), (75, 56155), (85, 56251), (88, 56269), (89, 56278),

Gene: Ashraf_67 Start: 56247, Stop: 57011, Start Num: 14

Candidate Starts for Ashraf_67:

(Start: 7 @56157 has 22 MA's), (Start: 9 @56208 has 3 MA's), (10, 56211), (12, 56229), (Start: 14 @56247 has 88 MA's), (Start: 15 @56268 has 3 MA's), (Start: 18 @56280 has 10 MA's), (23, 56307), (31, 56430), (34, 56442), (38, 56493), (42, 56508), (44, 56529), (46, 56532), (48, 56547), (55, 56601), (59, 56628), (60, 56634), (75, 56820), (85, 56916), (88, 56934), (89, 56943),

Gene: Banjo_65 Start: 56057, Stop: 56788, Start Num: 18

Candidate Starts for Banjo_65:

(Start: 7 @55934 has 22 MA's), (Start: 9 @55985 has 3 MA's), (10, 55988), (12, 56006), (Start: 14 @56024 has 88 MA's), (Start: 15 @56045 has 3 MA's), (Start: 18 @56057 has 10 MA's), (23, 56084), (31, 56207), (34, 56219), (38, 56270), (42, 56285), (44, 56306), (46, 56309), (48, 56324), (55, 56378), (59, 56405), (60, 56411), (75, 56597), (85, 56693), (88, 56711), (89, 56720),

Gene: Basato_66 Start: 56333, Stop: 57064, Start Num: 18

Candidate Starts for Basato_66:

(Start: 7 @56210 has 22 MA's), (Start: 9 @56261 has 3 MA's), (10, 56264), (12, 56282), (Start: 14 @56300 has 88 MA's), (Start: 15 @56321 has 3 MA's), (Start: 18 @56333 has 10 MA's), (23, 56360), (31, 56483), (34, 56495), (38, 56546), (42, 56561), (44, 56582), (46, 56585), (48, 56600), (55, 56654), (59, 56681), (60, 56687), (75, 56873), (85, 56969), (88, 56987), (89, 56996),

Gene: BatteryCK_65 Start: 55994, Stop: 56758, Start Num: 14

Candidate Starts for BatteryCK_65:

(Start: 7 @55904 has 22 MA's), (Start: 9 @55955 has 3 MA's), (10, 55958), (12, 55976), (Start: 14 @55994 has 88 MA's), (Start: 15 @56015 has 3 MA's), (Start: 18 @56027 has 10 MA's), (23, 56054), (31, 56177), (34, 56189), (38, 56240), (42, 56255), (44, 56276), (46, 56279), (48, 56294), (55, 56348), (59, 56375), (60, 56381), (75, 56567), (85, 56663), (88, 56681), (89, 56690),

Gene: BlackStallion_67 Start: 56294, Stop: 57058, Start Num: 14

Candidate Starts for BlackStallion_67:

(Start: 7 @56204 has 22 MA's), (Start: 9 @56255 has 3 MA's), (10, 56258), (12, 56276), (Start: 14 @56294 has 88 MA's), (Start: 15 @56315 has 3 MA's), (Start: 18 @56327 has 10 MA's), (23, 56354), (31, 56477), (34, 56489), (38, 56540), (42, 56555), (44, 56576), (46, 56579), (48, 56594), (55, 56648), (59, 56675), (60, 56681), (75, 56867), (85, 56963), (88, 56981), (89, 56990),

Gene: BlueHusk_68 Start: 56049, Stop: 56813, Start Num: 14

Candidate Starts for BlueHusk_68:

(Start: 7 @55959 has 22 MA's), (Start: 9 @56010 has 3 MA's), (10, 56013), (12, 56031), (Start: 14 @56049 has 88 MA's), (Start: 15 @56070 has 3 MA's), (Start: 18 @56082 has 10 MA's), (23, 56109), (31, 56232), (34, 56244), (38, 56295), (42, 56310), (44, 56331), (46, 56334), (48, 56349), (55, 56403), (59, 56430), (60, 56436), (75, 56622), (85, 56718), (88, 56736), (89, 56745),

Gene: Buckeye_67 Start: 57114, Stop: 57878, Start Num: 14

Candidate Starts for Buckeye_67:

(Start: 7 @57024 has 22 MA's), (Start: 9 @57075 has 3 MA's), (10, 57078), (12, 57096), (Start: 14 @57114 has 88 MA's), (Start: 15 @57135 has 3 MA's), (Start: 18 @57147 has 10 MA's), (23, 57174), (31, 57297), (34, 57309), (38, 57360), (42, 57375), (44, 57396), (46, 57399), (48, 57414), (55, 57468), (59, 57495), (60, 57501), (75, 57687), (85, 57783), (88, 57801), (89, 57810),

Gene: Caspiboi_66 Start: 56257, Stop: 57021, Start Num: 14

Candidate Starts for Caspiboi_66:

(Start: 7 @56167 has 22 MA's), (Start: 9 @56218 has 3 MA's), (10, 56221), (12, 56239), (Start: 14 @56257 has 88 MA's), (Start: 15 @56278 has 3 MA's), (Start: 18 @56290 has 10 MA's), (23, 56317), (31, 56440), (34, 56452), (38, 56503), (42, 56518), (44, 56539), (46, 56542), (48, 56557), (55, 56611), (59, 56638), (60, 56644), (75, 56830), (85, 56926), (88, 56944), (89, 56953),

Gene: CharlieGBrown_65 Start: 55849, Stop: 56703, Start Num: 7

Candidate Starts for CharlieGBrown_65:

(Start: 7 @55849 has 22 MA's), (Start: 9 @55900 has 3 MA's), (10, 55903), (12, 55921), (Start: 14 @55939 has 88 MA's), (Start: 15 @55960 has 3 MA's), (Start: 18 @55972 has 10 MA's), (23, 55999), (31, 56122), (34, 56134), (38, 56185), (42, 56200), (44, 56221), (46, 56224), (48, 56239), (55, 56293), (59, 56320), (60, 56326), (75, 56512), (85, 56608), (88, 56626), (89, 56635),

Gene: Cher_67 Start: 56454, Stop: 57308, Start Num: 7

Candidate Starts for Cher_67:

(Start: 7 @56454 has 22 MA's), (Start: 9 @56505 has 3 MA's), (10, 56508), (12, 56526), (Start: 14 @56544 has 88 MA's), (Start: 15 @56565 has 3 MA's), (Start: 18 @56577 has 10 MA's), (23, 56604), (31, 56727), (34, 56739), (38, 56790), (42, 56805), (44, 56826), (46, 56829), (48, 56844), (55, 56898), (59, 56925), (60, 56931), (75, 57117), (85, 57213), (88, 57231), (89, 57240),

Gene: Chorkpop_67 Start: 56031, Stop: 56795, Start Num: 14

Candidate Starts for Chorkpop_67:

(Start: 7 @55941 has 22 MA's), (Start: 9 @55992 has 3 MA's), (10, 55995), (12, 56013), (Start: 14 @56031 has 88 MA's), (Start: 15 @56052 has 3 MA's), (Start: 18 @56064 has 10 MA's), (23, 56091), (31, 56214), (34, 56226), (38, 56277), (42, 56292), (44, 56313), (46, 56316), (48, 56331), (55, 56385), (59, 56412), (60, 56418), (75, 56604), (85, 56700), (88, 56718), (89, 56727),

Gene: Cobra_67 Start: 56485, Stop: 57339, Start Num: 7

Candidate Starts for Cobra_67:

(Start: 7 @56485 has 22 MA's), (Start: 9 @56536 has 3 MA's), (10, 56539), (12, 56557), (Start: 14 @56575 has 88 MA's), (Start: 15 @56596 has 3 MA's), (Start: 18 @56608 has 10 MA's), (23, 56635), (31, 56758), (34, 56770), (38, 56821), (42, 56836), (44, 56857), (46, 56860), (48, 56875), (55, 56929), (59, 56956), (60, 56962), (75, 57148), (85, 57244), (88, 57262), (89, 57271),

Gene: Craff_70 Start: 56888, Stop: 57742, Start Num: 7

Candidate Starts for Craff_70:

(Start: 7 @56888 has 22 MA's), (Start: 9 @56939 has 3 MA's), (10, 56942), (12, 56960), (Start: 14 @56978 has 88 MA's), (Start: 15 @56999 has 3 MA's), (Start: 18 @57011 has 10 MA's), (23, 57038), (31, 57161), (34, 57173), (38, 57224), (42, 57239), (44, 57260), (46, 57263), (48, 57278), (55, 57332), (59, 57359), (60, 57365), (75, 57551), (85, 57647), (88, 57665), (89, 57674),

Gene: Daffy_65 Start: 56016, Stop: 56780, Start Num: 14

Candidate Starts for Daffy_65:

(Start: 7 @55926 has 22 MA's), (Start: 9 @55977 has 3 MA's), (10, 55980), (12, 55998), (Start: 14 @56016 has 88 MA's), (Start: 15 @56037 has 3 MA's), (Start: 18 @56049 has 10 MA's), (23, 56076), (31, 56199), (34, 56211), (38, 56262), (42, 56277), (44, 56298), (46, 56301), (48, 56316), (55, 56370), (59, 56397), (60, 56403), (75, 56589), (85, 56685), (88, 56703), (89, 56712),

Gene: Daka_69 Start: 56530, Stop: 57294, Start Num: 14

Candidate Starts for Daka_69:

(Start: 7 @56440 has 22 MA's), (Start: 9 @56491 has 3 MA's), (10, 56494), (12, 56512), (Start: 14 @56530 has 88 MA's), (Start: 15 @56551 has 3 MA's), (Start: 18 @56563 has 10 MA's), (23, 56590), (31, 56713), (34, 56725), (38, 56776), (42, 56791), (44, 56812), (46, 56815), (48, 56830), (55, 56884), (59, 56911), (60, 56917), (75, 57103), (85, 57199), (88, 57217), (89, 57226),

Gene: Dati_64 Start: 56359, Stop: 57123, Start Num: 14

Candidate Starts for Dati_64:

(Start: 7 @56269 has 22 MA's), (Start: 9 @56320 has 3 MA's), (10, 56323), (12, 56341), (Start: 14 @56359 has 88 MA's), (Start: 15 @56380 has 3 MA's), (Start: 18 @56392 has 10 MA's), (23, 56419), (31, 56542), (34, 56554), (38, 56605), (42, 56620), (44, 56641), (46, 56644), (48, 56659), (55, 56713), (59, 56740), (60, 56746), (75, 56932), (85, 57028), (88, 57046), (89, 57055),

Gene: Derpp_67 Start: 56025, Stop: 56879, Start Num: 7

Candidate Starts for Derpp_67:

(Start: 7 @56025 has 22 MA's), (Start: 9 @56076 has 3 MA's), (10, 56079), (12, 56097), (Start: 14 @56115 has 88 MA's), (Start: 15 @56136 has 3 MA's), (Start: 18 @56148 has 10 MA's), (23, 56175), (31, 56298), (34, 56310), (38, 56361), (42, 56376), (44, 56397), (46, 56400), (48, 56415), (55, 56469), (59, 56496), (60, 56502), (75, 56688), (85, 56784), (88, 56802), (89, 56811),

Gene: Dingo_64 Start: 55558, Stop: 56322, Start Num: 14

Candidate Starts for Dingo_64:

(Start: 7 @55468 has 22 MA's), (Start: 9 @55519 has 3 MA's), (10, 55522), (12, 55540), (Start: 14 @55558 has 88 MA's), (Start: 15 @55579 has 3 MA's), (Start: 18 @55591 has 10 MA's), (23, 55618), (31, 55741), (34, 55753), (38, 55804), (42, 55819), (44, 55840), (46, 55843), (48, 55858), (55, 55912), (59, 55939), (60, 55945), (75, 56131), (85, 56227), (88, 56245), (89, 56254),

Gene: DirtJuice_67 Start: 56321, Stop: 57085, Start Num: 14

Candidate Starts for DirtJuice_67:

(Start: 7 @56231 has 22 MA's), (Start: 9 @56282 has 3 MA's), (10, 56285), (12, 56303), (Start: 14 @56321 has 88 MA's), (Start: 15 @56342 has 3 MA's), (Start: 18 @56354 has 10 MA's), (23, 56381), (31, 56504), (34, 56516), (38, 56567), (42, 56582), (44, 56603), (46, 56606), (48, 56621), (55, 56675), (59, 56702), (60, 56708), (75, 56894), (85, 56990), (88, 57008), (89, 57017),

Gene: Doddsville_65 Start: 56078, Stop: 56842, Start Num: 14

Candidate Starts for Doddsville_65:

(Start: 7 @55988 has 22 MA's), (Start: 9 @56039 has 3 MA's), (10, 56042), (12, 56060), (Start: 14 @56078 has 88 MA's), (Start: 15 @56099 has 3 MA's), (Start: 18 @56111 has 10 MA's), (23, 56138), (31, 56261), (34, 56273), (38, 56324), (42, 56339), (44, 56360), (46, 56363), (48, 56378), (55, 56432), (59, 56459), (60, 56465), (75, 56651), (85, 56747), (88, 56765), (89, 56774),

Gene: DonSanchon_63 Start: 55713, Stop: 56477, Start Num: 14

Candidate Starts for DonSanchon_63:

(Start: 7 @55623 has 22 MA's), (Start: 9 @55674 has 3 MA's), (10, 55677), (12, 55695), (Start: 14 @55713 has 88 MA's), (Start: 15 @55734 has 3 MA's), (Start: 18 @55746 has 10 MA's), (23, 55773), (31, 55896), (34, 55908), (38, 55959), (42, 55974), (44, 55995), (46, 55998), (48, 56013), (55, 56067), (59, 56094), (60, 56100), (75, 56286), (85, 56382), (88, 56400), (89, 56409),

Gene: Donny_67 Start: 57544, Stop: 58281, Start Num: 13

Candidate Starts for Donny_67:

(Start: 13 @57544 has 4 MA's), (Start: 16 @57571 has 1 MA's), (22, 57595), (29, 57709), (37, 57766), (48, 57838), (50, 57877), (53, 57886), (61, 57931), (69, 58036), (71, 58045), (84, 58189), (92, 58258),

Gene: DuchessDung_66 Start: 55594, Stop: 56358, Start Num: 14

Candidate Starts for DuchessDung_66:

(Start: 7 @55504 has 22 MA's), (Start: 9 @55555 has 3 MA's), (10, 55558), (12, 55576), (Start: 14 @55594 has 88 MA's), (Start: 15 @55615 has 3 MA's), (Start: 18 @55627 has 10 MA's), (23, 55654), (31, 55777), (34, 55789), (38, 55840), (42, 55855), (44, 55876), (46, 55879), (48, 55894), (55, 55948), (59, 55975), (60, 55981), (75, 56167), (85, 56263), (88, 56281), (89, 56290),

Gene: Durga_69 Start: 56821, Stop: 57585, Start Num: 14

Candidate Starts for Durga_69:

(Start: 7 @56731 has 22 MA's), (Start: 9 @56782 has 3 MA's), (10, 56785), (12, 56803), (Start: 14 @56821 has 88 MA's), (Start: 15 @56842 has 3 MA's), (Start: 18 @56854 has 10 MA's), (23, 56881), (31, 57004), (34, 57016), (38, 57067), (42, 57082), (44, 57103), (46, 57106), (48, 57121), (55, 57175), (59, 57202), (60, 57208), (75, 57394), (85, 57490), (88, 57508), (89, 57517),

Gene: EastView9101_65 Start: 57271, Stop: 57981, Start Num: 16

Candidate Starts for EastView9101_65:

(Start: 13 @57244 has 4 MA's), (Start: 16 @57271 has 1 MA's), (22, 57295), (29, 57409), (37, 57466), (48, 57538), (50, 57577), (53, 57586), (61, 57631), (69, 57736), (71, 57745), (84, 57889), (92, 57958),

Gene: ElvisPhasley_67 Start: 57008, Stop: 57811, Start Num: 9

Candidate Starts for ElvisPhasley_67:

(Start: 7 @56957 has 22 MA's), (Start: 9 @57008 has 3 MA's), (10, 57011), (12, 57029), (Start: 14 @57047 has 88 MA's), (Start: 15 @57068 has 3 MA's), (Start: 18 @57080 has 10 MA's), (23, 57107), (31, 57230), (34, 57242), (38, 57293), (42, 57308), (44, 57329), (46, 57332), (48, 57347), (55, 57401), (59, 57428), (60, 57434), (75, 57620), (85, 57716), (88, 57734), (89, 57743),

Gene: Emiris_68 Start: 56730, Stop: 57494, Start Num: 14

Candidate Starts for Emiris_68:

(Start: 7 @56640 has 22 MA's), (Start: 9 @56691 has 3 MA's), (10, 56694), (12, 56712), (Start: 14 @56730 has 88 MA's), (Start: 15 @56751 has 3 MA's), (Start: 18 @56763 has 10 MA's), (23, 56790), (31, 56913), (34, 56925), (38, 56976), (42, 56991), (44, 57012), (46, 57015), (48, 57030), (55, 57084), (59, 57111), (60, 57117), (75, 57303), (85, 57399), (88, 57417), (89, 57426),

Gene: Etaye_66 Start: 56873, Stop: 57637, Start Num: 14

Candidate Starts for Etaye_66:

(Start: 7 @56783 has 22 MA's), (Start: 9 @56834 has 3 MA's), (10, 56837), (12, 56855), (Start: 14 @56873 has 88 MA's), (Start: 15 @56894 has 3 MA's), (Start: 18 @56906 has 10 MA's), (23, 56933), (31, 57056), (34, 57068), (38, 57119), (42, 57134), (44, 57155), (46, 57158), (48, 57173), (55, 57227), (59, 57254), (60, 57260), (75, 57446), (85, 57542), (88, 57560), (89, 57569),

Gene: Fang_68 Start: 56563, Stop: 57327, Start Num: 14

Candidate Starts for Fang_68:

(Start: 7 @56473 has 22 MA's), (Start: 9 @56524 has 3 MA's), (10, 56527), (12, 56545), (Start: 14 @56563 has 88 MA's), (Start: 15 @56584 has 3 MA's), (Start: 18 @56596 has 10 MA's), (23, 56623), (31, 56746), (34, 56758), (38, 56809), (42, 56824), (44, 56845), (46, 56848), (48, 56863), (55, 56917), (59, 56944), (60, 56950), (75, 57136), (85, 57232), (88, 57250), (89, 57259),

Gene: FluffyNinja_67 Start: 56316, Stop: 57059, Start Num: 15

Candidate Starts for FluffyNinja_67:

(Start: 7 @56205 has 22 MA's), (Start: 9 @56256 has 3 MA's), (10, 56259), (12, 56277), (Start: 14 @56295 has 88 MA's), (Start: 15 @56316 has 3 MA's), (Start: 18 @56328 has 10 MA's), (23, 56355), (31, 56478), (34, 56490), (38, 56541), (42, 56556), (44, 56577), (46, 56580), (48, 56595), (55, 56649), (59, 56676), (60, 56682), (75, 56868), (85, 56964), (88, 56982), (89, 56991),

Gene: FriarPreacher_65 Start: 56114, Stop: 56878, Start Num: 14

Candidate Starts for FriarPreacher_65:

(Start: 7 @56024 has 22 MA's), (Start: 9 @56075 has 3 MA's), (10, 56078), (12, 56096), (Start: 14 @56114 has 88 MA's), (Start: 15 @56135 has 3 MA's), (Start: 18 @56147 has 10 MA's), (23, 56174), (31, 56297), (34, 56309), (38, 56360), (42, 56375), (44, 56396), (46, 56399), (48, 56414), (55, 56468), (59, 56495), (60, 56501), (75, 56687), (85, 56783), (88, 56801), (89, 56810),

Gene: FugateOSU_67 Start: 56977, Stop: 57831, Start Num: 7

Candidate Starts for FugateOSU_67:

(Start: 7 @56977 has 22 MA's), (Start: 9 @57028 has 3 MA's), (10, 57031), (12, 57049), (Start: 14 @57067 has 88 MA's), (Start: 15 @57088 has 3 MA's), (Start: 18 @57100 has 10 MA's), (23, 57127), (31, 57250), (34, 57262), (38, 57313), (42, 57328), (44, 57349), (46, 57352), (48, 57367), (55, 57421), (59, 57448), (60, 57454), (75, 57640), (85, 57736), (88, 57754), (89, 57763),

Gene: GeneCoco_67 Start: 56596, Stop: 57327, Start Num: 18

Candidate Starts for GeneCoco_67:

(Start: 7 @56473 has 22 MA's), (Start: 9 @56524 has 3 MA's), (10, 56527), (12, 56545), (Start: 14 @56563 has 88 MA's), (Start: 15 @56584 has 3 MA's), (Start: 18 @56596 has 10 MA's), (23, 56623), (31, 56746), (34, 56758), (38, 56809), (42, 56824), (44, 56845), (46, 56848), (48, 56863), (55, 56917), (59, 56944), (60, 56950), (75, 57136), (85, 57232), (88, 57250), (89, 57259),

Gene: Grand2040_65 Start: 56506, Stop: 57270, Start Num: 14

Candidate Starts for Grand2040_65:

(Start: 7 @56416 has 22 MA's), (Start: 9 @56467 has 3 MA's), (10, 56470), (12, 56488), (Start: 14 @56506 has 88 MA's), (Start: 15 @56527 has 3 MA's), (Start: 18 @56539 has 10 MA's), (23, 56566), (31, 56689), (34, 56701), (38, 56752), (42, 56767), (44, 56788), (46, 56791), (48, 56806), (55, 56860), (59, 56887), (60, 56893), (75, 57079), (85, 57175), (88, 57193), (89, 57202),

Gene: Gyarad_0066 Start: 55883, Stop: 56647, Start Num: 14

Candidate Starts for Gyarad_0066:

(Start: 7 @55793 has 22 MA's), (Start: 9 @55844 has 3 MA's), (10, 55847), (12, 55865), (Start: 14 @55883 has 88 MA's), (Start: 15 @55904 has 3 MA's), (Start: 18 @55916 has 10 MA's), (23, 55943), (31, 56066), (34, 56078), (38, 56129), (42, 56144), (44, 56165), (46, 56168), (48, 56183), (55, 56237), (59, 56264), (60, 56270), (75, 56456), (85, 56552), (88, 56570), (89, 56579),

Gene: Haimas_65 Start: 55924, Stop: 56778, Start Num: 7

Candidate Starts for Haimas_65:

(Start: 7 @55924 has 22 MA's), (Start: 9 @55975 has 3 MA's), (10, 55978), (12, 55996), (Start: 14 @56014 has 88 MA's), (Start: 15 @56035 has 3 MA's), (Start: 18 @56047 has 10 MA's), (23, 56074), (31, 56197), (34, 56209), (38, 56260), (42, 56275), (44, 56296), (46, 56299), (48, 56314), (55, 56368), (59, 56395), (60, 56401), (75, 56587), (85, 56683), (88, 56701), (89, 56710),

Gene: Hamish_64 Start: 55979, Stop: 56710, Start Num: 18

Candidate Starts for Hamish_64:

(Start: 7 @55856 has 22 MA's), (Start: 9 @55907 has 3 MA's), (10, 55910), (12, 55928), (Start: 14 @55946 has 88 MA's), (Start: 15 @55967 has 3 MA's), (Start: 18 @55979 has 10 MA's), (23, 56006), (31, 56129), (34, 56141), (38, 56192), (42, 56207), (44, 56228), (46, 56231), (48, 56246), (55, 56300), (59, 56327), (60, 56333), (75, 56519), (85, 56615), (88, 56633), (89, 56642),

Gene: Harvey_64 Start: 56043, Stop: 56807, Start Num: 14

Candidate Starts for Harvey_64:

(Start: 7 @55953 has 22 MA's), (Start: 9 @56004 has 3 MA's), (10, 56007), (12, 56025), (Start: 14 @56043 has 88 MA's), (Start: 15 @56064 has 3 MA's), (Start: 18 @56076 has 10 MA's), (23, 56103), (31, 56226), (34, 56238), (38, 56289), (42, 56304), (44, 56325), (46, 56328), (48, 56343), (55, 56397), (59, 56424), (60, 56430), (75, 56616), (85, 56712), (88, 56730), (89, 56739),

Gene: Held_65 Start: 56017, Stop: 56781, Start Num: 14

Candidate Starts for Held_65:

(Start: 7 @55927 has 22 MA's), (Start: 9 @55978 has 3 MA's), (10, 55981), (12, 55999), (Start: 14 @56017 has 88 MA's), (Start: 15 @56038 has 3 MA's), (Start: 18 @56050 has 10 MA's), (23, 56077), (31, 56200), (34, 56212), (38, 56263), (42, 56278), (44, 56299), (46, 56302), (48, 56317), (55, 56371), (59, 56398), (60, 56404), (75, 56590), (85, 56686), (88, 56704), (89, 56713),

Gene: HighStump_68 Start: 56520, Stop: 57284, Start Num: 14

Candidate Starts for HighStump_68:

(Start: 7 @56430 has 22 MA's), (Start: 9 @56481 has 3 MA's), (10, 56484), (12, 56502), (Start: 14 @56520 has 88 MA's), (Start: 15 @56541 has 3 MA's), (Start: 18 @56553 has 10 MA's), (23, 56580), (31, 56703), (34, 56715), (38, 56766), (42, 56781), (44, 56802), (46, 56805), (48, 56820), (55, 56874), (59, 56901), (60, 56907), (75, 57093), (85, 57189), (88, 57207), (89, 57216),

Gene: Horchata_64 Start: 56038, Stop: 56802, Start Num: 14

Candidate Starts for Horchata_64:

(Start: 7 @55948 has 22 MA's), (Start: 9 @55999 has 3 MA's), (10, 56002), (12, 56020), (Start: 14 @56038 has 88 MA's), (Start: 15 @56059 has 3 MA's), (Start: 18 @56071 has 10 MA's), (23, 56098), (28, 56194), (31, 56221), (34, 56233), (38, 56284), (42, 56299), (44, 56320), (46, 56323), (48, 56338), (55, 56392), (59, 56419), (60, 56425), (75, 56611), (85, 56707), (88, 56725), (89, 56734),

Gene: ImtiyazSitla_67 Start: 56247, Stop: 57011, Start Num: 14

Candidate Starts for ImtiyazSitla_67:

(Start: 7 @56157 has 22 MA's), (Start: 9 @56208 has 3 MA's), (10, 56211), (12, 56229), (Start: 14 @56247 has 88 MA's), (Start: 15 @56268 has 3 MA's), (Start: 18 @56280 has 10 MA's), (23, 56307), (31, 56430), (34, 56442), (38, 56493), (42, 56508), (44, 56529), (46, 56532), (48, 56547), (55, 56601), (59, 56628), (60, 56634), (75, 56820), (85, 56916), (88, 56934), (89, 56943),

Gene: Imvubu_60 Start: 55578, Stop: 56336, Start Num: 9

Candidate Starts for Imvubu_60:

(Start: 9 @55578 has 3 MA's), (17, 55644), (23, 55677), (37, 55833), (40, 55863), (43, 55884), (48, 55902), (52, 55947), (55, 55956), (58, 55980), (62, 55998), (64, 56007), (72, 56112), (74, 56130), (76, 56172), (80, 56208), (84, 56253), (91, 56313),

Gene: Inverness_65 Start: 56047, Stop: 56811, Start Num: 14

Candidate Starts for Inverness_65:

(Start: 7 @55957 has 22 MA's), (Start: 9 @56008 has 3 MA's), (10, 56011), (12, 56029), (Start: 14 @56047 has 88 MA's), (Start: 15 @56068 has 3 MA's), (Start: 18 @56080 has 10 MA's), (23, 56107), (28, 56203), (31, 56230), (34, 56242), (38, 56293), (42, 56308), (44, 56329), (46, 56332), (48, 56347), (55, 56401), (59, 56428), (60, 56434), (75, 56620), (85, 56716), (88, 56734), (89, 56743),

Gene: Iridoclysis_66 Start: 56241, Stop: 57095, Start Num: 7

Candidate Starts for Iridoclysis_66:

(Start: 7 @56241 has 22 MA's), (Start: 9 @56292 has 3 MA's), (10, 56295), (12, 56313), (Start: 14 @56331 has 88 MA's), (Start: 15 @56352 has 3 MA's), (Start: 18 @56364 has 10 MA's), (23, 56391), (31, 56514), (34, 56526), (38, 56577), (42, 56592), (44, 56613), (46, 56616), (48, 56631), (55, 56685), (59, 56712), (60, 56718), (75, 56904), (85, 57000), (88, 57018), (89, 57027),

Gene: Kailash_65 Start: 56438, Stop: 57202, Start Num: 14

Candidate Starts for Kailash_65:

(Start: 7 @56348 has 22 MA's), (Start: 9 @56399 has 3 MA's), (10, 56402), (12, 56420), (Start: 14 @56438 has 88 MA's), (Start: 15 @56459 has 3 MA's), (Start: 18 @56471 has 10 MA's), (23, 56498), (31, 56621), (34, 56633), (38, 56684), (42, 56699), (44, 56720), (46, 56723), (48, 56738), (55, 56792), (59, 56819), (60, 56825), (75, 57011), (85, 57107), (88, 57125), (89, 57134),

Gene: KingTut_58 Start: 52778, Stop: 53509, Start Num: 18

Candidate Starts for KingTut_58:

(Start: 7 @52655 has 22 MA's), (Start: 9 @52706 has 3 MA's), (10, 52709), (12, 52727), (Start: 14 @52745 has 88 MA's), (Start: 15 @52766 has 3 MA's), (Start: 18 @52778 has 10 MA's), (23, 52805), (31, 52928), (34, 52940), (38, 52991), (42, 53006), (44, 53027), (46, 53030), (48, 53045), (55, 53099), (59, 53126), (60, 53132), (75, 53318), (85, 53414), (88, 53432), (89, 53441),

Gene: KingVeVeVe_65 Start: 55548, Stop: 56312, Start Num: 14

Candidate Starts for KingVeVeVe_65:

(Start: 7 @55458 has 22 MA's), (Start: 9 @55509 has 3 MA's), (10, 55512), (12, 55530), (Start: 14 @55548 has 88 MA's), (Start: 15 @55569 has 3 MA's), (Start: 18 @55581 has 10 MA's), (23, 55608), (31, 55731), (34, 55743), (38, 55794), (42, 55809), (44, 55830), (46, 55833), (48, 55848), (55, 55902), (59, 55929), (60, 55935), (75, 56121), (85, 56217), (88, 56235), (89, 56244),

Gene: Kloppinator_67 Start: 56203, Stop: 56970, Start Num: 14

Candidate Starts for Kloppinator_67:

(Start: 14 @56203 has 88 MA's), (Start: 15 @56224 has 3 MA's), (Start: 18 @56236 has 10 MA's), (23, 56263), (34, 56398), (38, 56449), (42, 56464), (44, 56485), (48, 56503), (49, 56530), (55, 56557), (57, 56575), (60, 56593), (63, 56605), (67, 56683), (76, 56782), (85, 56875),

Gene: Knocker_65 Start: 58505, Stop: 59257, Start Num: 9

Candidate Starts for Knocker_65:

(Start: 9 @58505 has 3 MA's), (17, 58562), (26, 58619), (27, 58637), (36, 58748), (37, 58751), (39, 58775), (43, 58802), (47, 58817), (48, 58820), (54, 58871), (56, 58880), (58, 58898), (59, 58901), (64, 58925), (65, 58943), (66, 58955), (68, 59015), (70, 59024), (71, 59027), (74, 59048), (77, 59096), (81, 59138), (90, 59216),

Gene: Kwksand96_67 Start: 56127, Stop: 56891, Start Num: 14

Candidate Starts for Kwksand96_67:

(Start: 7 @56037 has 22 MA's), (Start: 9 @56088 has 3 MA's), (10, 56091), (12, 56109), (Start: 14 @56127 has 88 MA's), (Start: 15 @56148 has 3 MA's), (Start: 18 @56160 has 10 MA's), (23, 56187), (31, 56310), (34, 56322), (38, 56373), (42, 56388), (44, 56409), (46, 56412), (48, 56427), (55, 56481), (59, 56508), (60, 56514), (75, 56700), (85, 56796), (88, 56814), (89, 56823),

Gene: Labeouficaum_67 Start: 56025, Stop: 56879, Start Num: 7

Candidate Starts for Labeouficaum_67:

(Start: 7 @56025 has 22 MA's), (Start: 9 @56076 has 3 MA's), (10, 56079), (12, 56097), (Start: 14 @56115 has 88 MA's), (Start: 15 @56136 has 3 MA's), (Start: 18 @56148 has 10 MA's), (23, 56175), (31, 56298), (34, 56310), (38, 56361), (42, 56376), (44, 56397), (46, 56400), (48, 56415), (55, 56469), (59, 56496), (60, 56502), (75, 56688), (85, 56784), (88, 56802), (89, 56811),

Gene: Lasso_66 Start: 56298, Stop: 57029, Start Num: 18

Candidate Starts for Lasso_66:

(Start: 7 @56175 has 22 MA's), (Start: 9 @56226 has 3 MA's), (10, 56229), (12, 56247), (Start: 14 @56265 has 88 MA's), (Start: 15 @56286 has 3 MA's), (Start: 18 @56298 has 10 MA's), (23, 56325), (31, 56448), (34, 56460), (38, 56511), (42, 56526), (44, 56547), (46, 56550), (48, 56565), (55, 56619), (59, 56646), (60, 56652), (75, 56838), (85, 56934), (88, 56952), (89, 56961),

Gene: LeeLot_66 Start: 56621, Stop: 57385, Start Num: 14

Candidate Starts for LeeLot_66:

(Start: 7 @56531 has 22 MA's), (Start: 9 @56582 has 3 MA's), (10, 56585), (12, 56603), (Start: 14 @56621 has 88 MA's), (Start: 15 @56642 has 3 MA's), (Start: 18 @56654 has 10 MA's), (23, 56681), (31, 56804), (34, 56816), (38, 56867), (42, 56882), (44, 56903), (46, 56906), (48, 56921), (55, 56975), (59, 57002), (60, 57008), (75, 57194), (85, 57290), (88, 57308), (89, 57317),

Gene: Lego3393_64 Start: 56483, Stop: 57337, Start Num: 7

Candidate Starts for Lego3393_64:

(Start: 7 @56483 has 22 MA's), (Start: 9 @56534 has 3 MA's), (10, 56537), (12, 56555), (Start: 14 @56573 has 88 MA's), (Start: 15 @56594 has 3 MA's), (Start: 18 @56606 has 10 MA's), (23, 56633), (31, 56756), (34, 56768), (38, 56819), (42, 56834), (44, 56855), (46, 56858), (48, 56873), (55, 56927), (59, 56954), (60, 56960), (75, 57146), (85, 57242), (88, 57260), (89, 57269),

Gene: Legolas_68 Start: 56360, Stop: 57124, Start Num: 14

Candidate Starts for Legolas_68:

(Start: 7 @56270 has 22 MA's), (Start: 9 @56321 has 3 MA's), (10, 56324), (12, 56342), (Start: 14 @56360 has 88 MA's), (Start: 15 @56381 has 3 MA's), (Start: 18 @56393 has 10 MA's), (23, 56420), (31, 56543), (34, 56555), (38, 56606), (42, 56621), (44, 56642), (46, 56645), (48, 56660), (55, 56714), (59, 56741), (60, 56747), (75, 56933), (85, 57029), (88, 57047), (89, 57056),

Gene: LemonSlice_67 Start: 56012, Stop: 56776, Start Num: 14

Candidate Starts for LemonSlice_67:

(Start: 7 @55922 has 22 MA's), (Start: 9 @55973 has 3 MA's), (10, 55976), (12, 55994), (Start: 14 @56012 has 88 MA's), (Start: 15 @56033 has 3 MA's), (Start: 18 @56045 has 10 MA's), (23, 56072), (31, 56195), (34, 56207), (38, 56258), (42, 56273), (44, 56294), (46, 56297), (48, 56312), (55, 56366), (59, 56393), (60, 56399), (75, 56585), (85, 56681), (88, 56699), (89, 56708),

Gene: LittleMinkey_74 Start: 57622, Stop: 58386, Start Num: 13

Candidate Starts for LittleMinkey_74:

(11, 57610), (12, 57613), (Start: 13 @57622 has 4 MA's), (Start: 18 @57664 has 10 MA's), (33, 57823), (41, 57877), (42, 57880), (59, 57997), (66, 58048), (75, 58189), (78, 58207), (86, 58291), (93, 58339),

Gene: LostAndPhound_66 Start: 56586, Stop: 57329, Start Num: 15

Candidate Starts for LostAndPhound_66:

(Start: 7 @56475 has 22 MA's), (Start: 9 @56526 has 3 MA's), (10, 56529), (12, 56547), (Start: 14 @56565 has 88 MA's), (Start: 15 @56586 has 3 MA's), (Start: 18 @56598 has 10 MA's), (23, 56625), (31, 56748), (34, 56760), (38, 56811), (42, 56826), (44, 56847), (46, 56850), (48, 56865), (55, 56919), (59, 56946), (60, 56952), (75, 57138), (85, 57234), (88, 57252), (89, 57261),

Gene: MRabcd_66 Start: 56334, Stop: 57098, Start Num: 14

Candidate Starts for MRabcd_66:

(Start: 7 @56244 has 22 MA's), (Start: 9 @56295 has 3 MA's), (10, 56298), (12, 56316), (Start: 14 @56334 has 88 MA's), (Start: 15 @56355 has 3 MA's), (Start: 18 @56367 has 10 MA's), (23, 56394), (31, 56517), (34, 56529), (38, 56580), (42, 56595), (44, 56616), (46, 56619), (48, 56634), (55, 56688), (59, 56715), (60, 56721), (75, 56907), (85, 57003), (88, 57021), (89, 57030),

Gene: Mag7_65 Start: 55982, Stop: 56746, Start Num: 14

Candidate Starts for Mag7_65:

(Start: 7 @55892 has 22 MA's), (Start: 9 @55943 has 3 MA's), (10, 55946), (12, 55964), (Start: 14 @55982 has 88 MA's), (Start: 15 @56003 has 3 MA's), (Start: 18 @56015 has 10 MA's), (23, 56042), (31, 56165), (34, 56177), (35, 56204), (38, 56228), (42, 56243), (44, 56264), (46, 56267), (48, 56282), (55, 56336), (59, 56363), (60, 56369), (75, 56555), (85, 56651), (88, 56669), (89, 56678),

Gene: Mana_65 Start: 56006, Stop: 56740, Start Num: 14

Candidate Starts for Mana_65:

(Start: 7 @55916 has 22 MA's), (Start: 9 @55967 has 3 MA's), (10, 55970), (12, 55988), (Start: 14 @56006 has 88 MA's), (Start: 15 @56027 has 3 MA's), (Start: 18 @56039 has 10 MA's), (23, 56066), (31, 56189), (34, 56201), (38, 56252), (42, 56267), (44, 56288), (46, 56291), (48, 56306), (55, 56360), (59, 56387), (60, 56393), (75, 56579), (85, 56675), (88, 56693), (89, 56702),

Gene: Maru_66 Start: 56446, Stop: 57210, Start Num: 14

Candidate Starts for Maru_66:

(Start: 7 @56356 has 22 MA's), (Start: 9 @56407 has 3 MA's), (10, 56410), (12, 56428), (Start: 14 @56446 has 88 MA's), (Start: 15 @56467 has 3 MA's), (Start: 18 @56479 has 10 MA's), (23, 56506), (31, 56629), (34, 56641), (38, 56692), (42, 56707), (44, 56728), (46, 56731), (48, 56746), (55, 56800), (59, 56827), (60, 56833), (75, 57019), (85, 57115), (88, 57133), (89, 57142),

Gene: Maskar_67 Start: 56247, Stop: 57011, Start Num: 14

Candidate Starts for Maskar_67:

(Start: 7 @56157 has 22 MA's), (Start: 9 @56208 has 3 MA's), (10, 56211), (12, 56229), (Start: 14 @56247 has 88 MA's), (Start: 15 @56268 has 3 MA's), (Start: 18 @56280 has 10 MA's), (23, 56307), (31, 56430), (34, 56442), (38, 56493), (42, 56508), (44, 56529), (46, 56532), (48, 56547), (55, 56601), (59, 56628), (60, 56634), (75, 56820), (85, 56916), (88, 56934), (89, 56943),

Gene: Matalotodo_65 Start: 56846, Stop: 57610, Start Num: 14

Candidate Starts for Matalotodo_65:

(Start: 7 @56756 has 22 MA's), (Start: 9 @56807 has 3 MA's), (10, 56810), (12, 56828), (Start: 14 @56846 has 88 MA's), (Start: 15 @56867 has 3 MA's), (Start: 18 @56879 has 10 MA's), (23, 56906), (31, 57029), (34, 57041), (38, 57092), (42, 57107), (44, 57128), (46, 57131), (48, 57146), (55, 57200), (59, 57227), (60, 57233), (75, 57419), (85, 57515), (88, 57533), (89, 57542),

Gene: Melc17_64 Start: 56647, Stop: 57411, Start Num: 14

Candidate Starts for Melc17_64:

(Start: 7 @56557 has 22 MA's), (Start: 9 @56608 has 3 MA's), (10, 56611), (12, 56629), (Start: 14 @56647 has 88 MA's), (Start: 15 @56668 has 3 MA's), (Start: 18 @56680 has 10 MA's), (23, 56707),

(31, 56830), (34, 56842), (38, 56893), (42, 56908), (44, 56929), (46, 56932), (48, 56947), (55, 57001), (59, 57028), (60, 57034), (75, 57220), (85, 57316), (88, 57334), (89, 57343),

Gene: MelsMeow_66 Start: 56300, Stop: 57064, Start Num: 14

Candidate Starts for MelsMeow_66:

(Start: 7 @56210 has 22 MA's), (Start: 9 @56261 has 3 MA's), (10, 56264), (12, 56282), (Start: 14 @56300 has 88 MA's), (Start: 15 @56321 has 3 MA's), (Start: 18 @56333 has 10 MA's), (23, 56360), (31, 56483), (34, 56495), (38, 56546), (42, 56561), (44, 56582), (46, 56585), (48, 56600), (55, 56654), (59, 56681), (60, 56687), (75, 56873), (85, 56969), (88, 56987), (89, 56996),

Gene: Mesh1_67 Start: 56492, Stop: 57346, Start Num: 7

Candidate Starts for Mesh1_67:

(Start: 7 @56492 has 22 MA's), (Start: 9 @56543 has 3 MA's), (10, 56546), (12, 56564), (Start: 14 @56582 has 88 MA's), (Start: 15 @56603 has 3 MA's), (Start: 18 @56615 has 10 MA's), (23, 56642), (31, 56765), (34, 56777), (38, 56828), (42, 56843), (44, 56864), (46, 56867), (48, 56882), (55, 56936), (59, 56963), (60, 56969), (75, 57155), (85, 57251), (88, 57269), (89, 57278),

Gene: MichaelPhcott_65 Start: 55889, Stop: 56743, Start Num: 7

Candidate Starts for MichaelPhcott_65:

(Start: 7 @55889 has 22 MA's), (Start: 9 @55940 has 3 MA's), (10, 55943), (12, 55961), (Start: 14 @55979 has 88 MA's), (Start: 15 @56000 has 3 MA's), (Start: 18 @56012 has 10 MA's), (23, 56039), (31, 56162), (34, 56174), (38, 56225), (42, 56240), (44, 56261), (46, 56264), (48, 56279), (55, 56333), (59, 56360), (60, 56366), (75, 56552), (85, 56648), (88, 56666), (89, 56675),

Gene: Mikota_64 Start: 55546, Stop: 56310, Start Num: 14

Candidate Starts for Mikota_64:

(5, 55420), (Start: 9 @55507 has 3 MA's), (10, 55510), (12, 55528), (Start: 14 @55546 has 88 MA's), (Start: 15 @55567 has 3 MA's), (Start: 18 @55579 has 10 MA's), (23, 55606), (28, 55702), (31, 55729), (34, 55741), (38, 55792), (42, 55807), (44, 55828), (46, 55831), (48, 55846), (55, 55900), (59, 55927), (60, 55933), (75, 56119), (85, 56215), (88, 56233), (89, 56242),

Gene: MiniBoss_64 Start: 55351, Stop: 56115, Start Num: 14

Candidate Starts for MiniBoss_64:

(Start: 7 @55261 has 22 MA's), (Start: 9 @55312 has 3 MA's), (10, 55315), (12, 55333), (Start: 14 @55351 has 88 MA's), (Start: 15 @55372 has 3 MA's), (Start: 18 @55384 has 10 MA's), (23, 55411), (28, 55507), (31, 55534), (34, 55546), (38, 55597), (42, 55612), (44, 55633), (46, 55636), (48, 55651), (55, 55705), (59, 55732), (60, 55738), (75, 55924), (85, 56020), (88, 56038), (89, 56047),

Gene: MitKao_66 Start: 56016, Stop: 56780, Start Num: 14

Candidate Starts for MitKao_66:

(Start: 7 @55926 has 22 MA's), (Start: 9 @55977 has 3 MA's), (10, 55980), (12, 55998), (Start: 14 @56016 has 88 MA's), (Start: 15 @56037 has 3 MA's), (Start: 18 @56049 has 10 MA's), (23, 56076), (31, 56199), (34, 56211), (38, 56262), (42, 56277), (44, 56298), (46, 56301), (48, 56316), (55, 56370), (59, 56397), (60, 56403), (75, 56589), (85, 56685), (88, 56703), (89, 56712),

Gene: Morgushi_65 Start: 56005, Stop: 56769, Start Num: 14

Candidate Starts for Morgushi_65:

(Start: 7 @55915 has 22 MA's), (Start: 9 @55966 has 3 MA's), (10, 55969), (12, 55987), (Start: 14 @56005 has 88 MA's), (Start: 15 @56026 has 3 MA's), (Start: 18 @56038 has 10 MA's), (23, 56065), (31, 56188), (34, 56200), (38, 56251), (42, 56266), (44, 56287), (46, 56290), (48, 56305), (55, 56359), (59, 56386), (60, 56392), (75, 56578), (85, 56674), (88, 56692), (89, 56701),

Gene: Mosaic_64 Start: 56010, Stop: 56774, Start Num: 14

Candidate Starts for Mosaic_64:

(Start: 7 @55920 has 22 MA's), (Start: 9 @55971 has 3 MA's), (10, 55974), (12, 55992), (Start: 14 @56010 has 88 MA's), (Start: 15 @56031 has 3 MA's), (Start: 18 @56043 has 10 MA's), (23, 56070), (31, 56193), (34, 56205), (38, 56256), (42, 56271), (44, 56292), (46, 56295), (48, 56310), (55, 56364), (59, 56391), (60, 56397), (75, 56583), (85, 56679), (88, 56697), (89, 56706),

Gene: Mulan_66 Start: 56245, Stop: 57009, Start Num: 14

Candidate Starts for Mulan_66:

(Start: 7 @56155 has 22 MA's), (Start: 9 @56206 has 3 MA's), (10, 56209), (12, 56227), (Start: 14 @56245 has 88 MA's), (Start: 15 @56266 has 3 MA's), (Start: 18 @56278 has 10 MA's), (23, 56305), (31, 56428), (34, 56440), (38, 56491), (42, 56506), (44, 56527), (46, 56530), (48, 56545), (55, 56599), (59, 56626), (60, 56632), (75, 56818), (85, 56914), (88, 56932), (89, 56941),

Gene: Murdoc_64 Start: 56294, Stop: 57058, Start Num: 14

Candidate Starts for Murdoc_64:

(Start: 7 @56204 has 22 MA's), (Start: 9 @56255 has 3 MA's), (10, 56258), (12, 56276), (Start: 14 @56294 has 88 MA's), (Start: 15 @56315 has 3 MA's), (Start: 18 @56327 has 10 MA's), (23, 56354), (31, 56477), (34, 56489), (38, 56540), (42, 56555), (44, 56576), (46, 56579), (48, 56594), (55, 56648), (59, 56675), (60, 56681), (75, 56867), (85, 56963), (88, 56981), (89, 56990),

Gene: Nathan_67 Start: 56382, Stop: 57146, Start Num: 14

Candidate Starts for Nathan_67:

(Start: 7 @56292 has 22 MA's), (Start: 9 @56343 has 3 MA's), (10, 56346), (12, 56364), (Start: 14 @56382 has 88 MA's), (Start: 15 @56403 has 3 MA's), (Start: 18 @56415 has 10 MA's), (23, 56442), (31, 56565), (34, 56577), (38, 56628), (42, 56643), (44, 56664), (46, 56667), (48, 56682), (55, 56736), (59, 56763), (60, 56769), (75, 56955), (85, 57051), (88, 57069), (89, 57078),

Gene: Oline_66 Start: 56210, Stop: 56941, Start Num: 18

Candidate Starts for Oline_66:

(Start: 7 @56087 has 22 MA's), (Start: 9 @56138 has 3 MA's), (10, 56141), (12, 56159), (Start: 14 @56177 has 88 MA's), (Start: 15 @56198 has 3 MA's), (Start: 18 @56210 has 10 MA's), (23, 56237), (31, 56360), (34, 56372), (38, 56423), (42, 56438), (44, 56459), (46, 56462), (48, 56477), (55, 56531), (59, 56558), (60, 56564), (75, 56750), (85, 56846), (88, 56864), (89, 56873),

Gene: Phamished_68 Start: 56138, Stop: 56992, Start Num: 7

Candidate Starts for Phamished_68:

(5, 56102), (Start: 7 @56138 has 22 MA's), (Start: 9 @56189 has 3 MA's), (10, 56192), (12, 56210), (Start: 14 @56228 has 88 MA's), (Start: 15 @56249 has 3 MA's), (Start: 18 @56261 has 10 MA's), (23, 56288), (31, 56411), (34, 56423), (38, 56474), (42, 56489), (44, 56510), (46, 56513), (48, 56528), (55, 56582), (59, 56609), (60, 56615), (75, 56801), (85, 56897), (88, 56915), (89, 56924),

Gene: Phareon_65 Start: 55736, Stop: 56500, Start Num: 14

Candidate Starts for Phareon_65:

(Start: 7 @55646 has 22 MA's), (Start: 9 @55697 has 3 MA's), (10, 55700), (12, 55718), (Start: 14 @55736 has 88 MA's), (Start: 15 @55757 has 3 MA's), (Start: 18 @55769 has 10 MA's), (23, 55796), (31, 55919), (34, 55931), (38, 55982), (42, 55997), (44, 56018), (46, 56021), (48, 56036), (55, 56090), (59, 56117), (60, 56123), (75, 56309), (85, 56405), (88, 56423), (89, 56432),

Gene: PhenghisKhan_67 Start: 56217, Stop: 56948, Start Num: 18

Candidate Starts for PhenghisKhan_67:

(Start: 7 @56094 has 22 MA's), (Start: 9 @56145 has 3 MA's), (10, 56148), (12, 56166), (Start: 14 @56184 has 88 MA's), (Start: 15 @56205 has 3 MA's), (Start: 18 @56217 has 10 MA's), (23, 56244), (31, 56367), (34, 56379), (35, 56406), (38, 56430), (42, 56445), (44, 56466), (46, 56469), (48, 56484),

(55, 56538), (59, 56565), (60, 56571), (75, 56757), (85, 56853), (88, 56871), (89, 56880),

Gene: Pherdinand_67 Start: 56297, Stop: 57061, Start Num: 14

Candidate Starts for Pherdinand_67:

(Start: 7 @56207 has 22 MA's), (Start: 9 @56258 has 3 MA's), (10, 56261), (12, 56279), (Start: 14 @56297 has 88 MA's), (Start: 15 @56318 has 3 MA's), (Start: 18 @56330 has 10 MA's), (23, 56357), (31, 56480), (34, 56492), (38, 56543), (42, 56558), (44, 56579), (46, 56582), (48, 56597), (55, 56651), (59, 56678), (60, 56684), (75, 56870), (85, 56966), (88, 56984), (89, 56993),

Gene: Phergie_67 Start: 56176, Stop: 56940, Start Num: 14

Candidate Starts for Phergie_67:

(Start: 7 @56086 has 22 MA's), (Start: 9 @56137 has 3 MA's), (10, 56140), (12, 56158), (Start: 14 @56176 has 88 MA's), (Start: 15 @56197 has 3 MA's), (Start: 18 @56209 has 10 MA's), (23, 56236), (31, 56359), (34, 56371), (35, 56398), (38, 56422), (42, 56437), (44, 56458), (46, 56461), (48, 56476), (55, 56530), (59, 56557), (60, 56563), (75, 56749), (85, 56845), (88, 56863), (89, 56872),

Gene: Phipps_66 Start: 56095, Stop: 56859, Start Num: 14

Candidate Starts for Phipps_66:

(Start: 7 @56005 has 22 MA's), (Start: 9 @56056 has 3 MA's), (10, 56059), (12, 56077), (Start: 14 @56095 has 88 MA's), (Start: 15 @56116 has 3 MA's), (Start: 18 @56128 has 10 MA's), (23, 56155), (31, 56278), (34, 56290), (38, 56341), (42, 56356), (44, 56377), (46, 56380), (48, 56395), (55, 56449), (59, 56476), (60, 56482), (75, 56668), (85, 56764), (88, 56782), (89, 56791),

Gene: Phleuron_65 Start: 55982, Stop: 56746, Start Num: 14

Candidate Starts for Phleuron_65:

(Start: 7 @55892 has 22 MA's), (Start: 9 @55943 has 3 MA's), (10, 55946), (12, 55964), (Start: 14 @55982 has 88 MA's), (Start: 15 @56003 has 3 MA's), (Start: 18 @56015 has 10 MA's), (23, 56042), (31, 56165), (34, 56177), (38, 56228), (42, 56243), (44, 56264), (46, 56267), (48, 56282), (55, 56336), (59, 56363), (60, 56369), (75, 56555), (85, 56651), (88, 56669), (89, 56678),

Gene: PhrankReynolds_66 Start: 56181, Stop: 56945, Start Num: 14

Candidate Starts for PhrankReynolds_66:

(Start: 7 @56091 has 22 MA's), (Start: 9 @56142 has 3 MA's), (10, 56145), (12, 56163), (Start: 14 @56181 has 88 MA's), (Start: 15 @56202 has 3 MA's), (Start: 18 @56214 has 10 MA's), (23, 56241), (31, 56364), (34, 56376), (35, 56403), (38, 56427), (42, 56442), (44, 56463), (46, 56466), (48, 56481), (55, 56535), (59, 56562), (60, 56568), (75, 56754), (85, 56850), (88, 56868), (89, 56877),

Gene: PhrodoBaggins_68 Start: 56401, Stop: 57165, Start Num: 14

Candidate Starts for PhrodoBaggins_68:

(Start: 7 @56311 has 22 MA's), (Start: 9 @56362 has 3 MA's), (10, 56365), (12, 56383), (Start: 14 @56401 has 88 MA's), (Start: 15 @56422 has 3 MA's), (Start: 18 @56434 has 10 MA's), (23, 56461), (31, 56584), (34, 56596), (38, 56647), (42, 56662), (44, 56683), (46, 56686), (48, 56701), (55, 56755), (59, 56782), (60, 56788), (75, 56974), (85, 57070), (88, 57088), (89, 57097),

Gene: PinheadLarry_66 Start: 56343, Stop: 57107, Start Num: 14

Candidate Starts for PinheadLarry_66:

(Start: 7 @56253 has 22 MA's), (Start: 9 @56304 has 3 MA's), (10, 56307), (12, 56325), (Start: 14 @56343 has 88 MA's), (Start: 15 @56364 has 3 MA's), (Start: 18 @56376 has 10 MA's), (23, 56403), (31, 56526), (34, 56538), (38, 56589), (42, 56604), (44, 56625), (46, 56628), (48, 56643), (55, 56697), (59, 56724), (60, 56730), (75, 56916), (85, 57012), (88, 57030), (89, 57039),

Gene: Pinkman_66 Start: 56029, Stop: 56883, Start Num: 7

Candidate Starts for Pinkman_66:

(Start: 7 @56029 has 22 MA's), (Start: 9 @56080 has 3 MA's), (10, 56083), (12, 56101), (Start: 14 @56119 has 88 MA's), (Start: 15 @56140 has 3 MA's), (Start: 18 @56152 has 10 MA's), (23, 56179), (31, 56302), (34, 56314), (38, 56365), (42, 56380), (44, 56401), (46, 56404), (48, 56419), (55, 56473), (59, 56500), (60, 56506), (75, 56692), (85, 56788), (88, 56806), (89, 56815),

Gene: Pipsqueak_64 Start: 55932, Stop: 56786, Start Num: 7

Candidate Starts for Pipsqueak_64:

(Start: 7 @55932 has 22 MA's), (Start: 9 @55983 has 3 MA's), (10, 55986), (12, 56004), (Start: 14 @56022 has 88 MA's), (Start: 15 @56043 has 3 MA's), (Start: 18 @56055 has 10 MA's), (23, 56082), (31, 56205), (34, 56217), (38, 56268), (42, 56283), (44, 56304), (46, 56307), (48, 56322), (55, 56376), (59, 56403), (60, 56409), (75, 56595), (85, 56691), (88, 56709), (89, 56718),

Gene: Placalicious_67 Start: 56973, Stop: 57827, Start Num: 7

Candidate Starts for Placalicious_67:

(Start: 7 @56973 has 22 MA's), (Start: 9 @57024 has 3 MA's), (10, 57027), (12, 57045), (Start: 14 @57063 has 88 MA's), (Start: 15 @57084 has 3 MA's), (Start: 18 @57096 has 10 MA's), (23, 57123), (31, 57246), (34, 57258), (38, 57309), (42, 57324), (44, 57345), (46, 57348), (48, 57363), (55, 57417), (59, 57444), (60, 57450), (75, 57636), (85, 57732), (88, 57750), (89, 57759),

Gene: Plmatters_65 Start: 56034, Stop: 56798, Start Num: 14

Candidate Starts for Plmatters_65:

(Start: 7 @55944 has 22 MA's), (Start: 9 @55995 has 3 MA's), (10, 55998), (12, 56016), (Start: 14 @56034 has 88 MA's), (Start: 15 @56055 has 3 MA's), (Start: 18 @56067 has 10 MA's), (23, 56094), (31, 56217), (34, 56229), (38, 56280), (42, 56295), (44, 56316), (46, 56319), (48, 56334), (55, 56388), (59, 56415), (60, 56421), (75, 56607), (85, 56703), (88, 56721), (89, 56730),

Gene: Podrick_66 Start: 56013, Stop: 56867, Start Num: 7

Candidate Starts for Podrick_66:

(Start: 7 @56013 has 22 MA's), (Start: 9 @56064 has 3 MA's), (10, 56067), (12, 56085), (Start: 14 @56103 has 88 MA's), (Start: 15 @56124 has 3 MA's), (Start: 18 @56136 has 10 MA's), (23, 56163), (31, 56286), (34, 56298), (38, 56349), (42, 56364), (44, 56385), (46, 56388), (48, 56403), (55, 56457), (59, 56484), (60, 56490), (75, 56676), (85, 56772), (88, 56790), (89, 56799),

Gene: Potter_64 Start: 56028, Stop: 56792, Start Num: 14

Candidate Starts for Potter_64:

(Start: 7 @55938 has 22 MA's), (Start: 9 @55989 has 3 MA's), (10, 55992), (12, 56010), (Start: 14 @56028 has 88 MA's), (Start: 15 @56049 has 3 MA's), (Start: 18 @56061 has 10 MA's), (23, 56088), (31, 56211), (34, 56223), (38, 56274), (42, 56289), (44, 56310), (46, 56313), (48, 56328), (55, 56382), (59, 56409), (60, 56415), (75, 56601), (85, 56697), (88, 56715), (89, 56724),

Gene: Prickles_68 Start: 56439, Stop: 57293, Start Num: 7

Candidate Starts for Prickles_68:

(Start: 7 @56439 has 22 MA's), (Start: 9 @56490 has 3 MA's), (10, 56493), (12, 56511), (Start: 14 @56529 has 88 MA's), (Start: 15 @56550 has 3 MA's), (Start: 18 @56562 has 10 MA's), (23, 56589), (31, 56712), (34, 56724), (38, 56775), (42, 56790), (44, 56811), (46, 56814), (48, 56829), (55, 56883), (59, 56910), (60, 56916), (75, 57102), (85, 57198), (88, 57216), (89, 57225),

Gene: Puhltonio_65 Start: 56303, Stop: 57067, Start Num: 14

Candidate Starts for Puhltonio_65:

(Start: 7 @56213 has 22 MA's), (Start: 9 @56264 has 3 MA's), (10, 56267), (12, 56285), (Start: 14 @56303 has 88 MA's), (Start: 15 @56324 has 3 MA's), (Start: 18 @56336 has 10 MA's), (23, 56363), (31, 56486), (34, 56498), (38, 56549), (42, 56564), (44, 56585), (46, 56588), (48, 56603), (55, 56657), (59, 56684), (60, 56690), (75, 56876), (85, 56972), (88, 56990), (89, 56999),

Gene: Reccee_66 Start: 57628, Stop: 58365, Start Num: 13

Candidate Starts for Reccee_66:

(Start: 13 @57628 has 4 MA's), (Start: 16 @57655 has 1 MA's), (22, 57679), (29, 57793), (37, 57850), (48, 57922), (50, 57961), (53, 57970), (61, 58015), (68, 58117), (71, 58129), (84, 58273), (92, 58342),

Gene: RedRaider89_66 Start: 56459, Stop: 57223, Start Num: 14

Candidate Starts for RedRaider89_66:

(Start: 7 @56369 has 22 MA's), (Start: 9 @56420 has 3 MA's), (10, 56423), (12, 56441), (Start: 14 @56459 has 88 MA's), (Start: 15 @56480 has 3 MA's), (Start: 18 @56492 has 10 MA's), (23, 56519), (31, 56642), (34, 56654), (38, 56705), (42, 56720), (44, 56741), (46, 56744), (48, 56759), (55, 56813), (59, 56840), (60, 56846), (75, 57032), (85, 57128), (88, 57146), (89, 57155),

Gene: Rinkes_62 Start: 56905, Stop: 57795, Start Num: 2

Candidate Starts for Rinkes_62:

(Start: 2 @56905 has 1 MA's), (3, 56917), (Start: 9 @57037 has 3 MA's), (20, 57112), (27, 57172), (32, 57256), (40, 57316), (45, 57340), (48, 57355), (49, 57382), (51, 57394), (54, 57406), (55, 57409), (56, 57415), (59, 57436), (62, 57451), (64, 57460), (65, 57478), (66, 57490), (71, 57562), (76, 57625), (77, 57631), (79, 57658), (81, 57673), (86, 57724), (92, 57772),

Gene: Rita130_65 Start: 57468, Stop: 58178, Start Num: 16

Candidate Starts for Rita130_65:

(Start: 13 @57441 has 4 MA's), (Start: 16 @57468 has 1 MA's), (22, 57492), (29, 57606), (37, 57663), (48, 57735), (50, 57774), (53, 57783), (61, 57828), (68, 57930), (71, 57942), (84, 58086), (92, 58155),

Gene: Roliet_64 Start: 55369, Stop: 56133, Start Num: 14

Candidate Starts for Roliet_64:

(5, 55243), (Start: 9 @55330 has 3 MA's), (10, 55333), (12, 55351), (Start: 14 @55369 has 88 MA's), (Start: 15 @55390 has 3 MA's), (Start: 18 @55402 has 10 MA's), (23, 55429), (31, 55552), (34, 55564), (38, 55615), (42, 55630), (44, 55651), (46, 55654), (48, 55669), (55, 55723), (59, 55750), (60, 55756), (75, 55942), (85, 56038), (88, 56056), (89, 56065),

Gene: SDcharge11_66 Start: 55451, Stop: 56305, Start Num: 7

Candidate Starts for SDcharge11_66:

(Start: 7 @55451 has 22 MA's), (Start: 9 @55502 has 3 MA's), (10, 55505), (12, 55523), (Start: 14 @55541 has 88 MA's), (Start: 15 @55562 has 3 MA's), (Start: 18 @55574 has 10 MA's), (23, 55601), (28, 55697), (31, 55724), (34, 55736), (38, 55787), (42, 55802), (44, 55823), (46, 55826), (48, 55841), (55, 55895), (59, 55922), (60, 55928), (75, 56114), (85, 56210), (88, 56228), (89, 56237),

Gene: Saguaro_63 Start: 56656, Stop: 57513, Start Num: 6

Candidate Starts for Saguaro_63:

(1, 56566), (4, 56644), (Start: 6 @56656 has 1 MA's), (8, 56725), (Start: 13 @56770 has 4 MA's), (19, 56818), (21, 56824), (24, 56845), (25, 56863), (30, 56953), (47, 57067), (48, 57070), (55, 57124), (62, 57166), (64, 57175), (73, 57289), (74, 57298), (82, 57409), (83, 57415), (87, 57448),

Gene: SallyH_69 Start: 56280, Stop: 57044, Start Num: 14

Candidate Starts for SallyH_69:

(Start: 7 @56190 has 22 MA's), (Start: 9 @56241 has 3 MA's), (10, 56244), (12, 56262), (Start: 14 @56280 has 88 MA's), (Start: 15 @56301 has 3 MA's), (Start: 18 @56313 has 10 MA's), (23, 56340), (31, 56463), (34, 56475), (38, 56526), (42, 56541), (44, 56562), (46, 56565), (48, 56580), (55, 56634), (59, 56661), (60, 56667), (75, 56853), (85, 56949), (88, 56967), (89, 56976),

Gene: SassyCat97_65 Start: 56051, Stop: 56782, Start Num: 18

Candidate Starts for SassyCat97_65:

(Start: 7 @55928 has 22 MA's), (Start: 9 @55979 has 3 MA's), (10, 55982), (12, 56000), (Start: 14 @56018 has 88 MA's), (Start: 15 @56039 has 3 MA's), (Start: 18 @56051 has 10 MA's), (23, 56078), (31, 56201), (34, 56213), (38, 56264), (42, 56279), (44, 56300), (46, 56303), (48, 56318), (55, 56372), (59, 56399), (60, 56405), (75, 56591), (85, 56687), (88, 56705), (89, 56714),

Gene: Scrick_66 Start: 56030, Stop: 56794, Start Num: 14

Candidate Starts for Scrick_66:

(Start: 7 @55940 has 22 MA's), (Start: 9 @55991 has 3 MA's), (10, 55994), (12, 56012), (Start: 14 @56030 has 88 MA's), (Start: 15 @56051 has 3 MA's), (Start: 18 @56063 has 10 MA's), (23, 56090), (31, 56213), (34, 56225), (38, 56276), (42, 56291), (44, 56312), (46, 56315), (48, 56330), (55, 56384), (59, 56411), (60, 56417), (75, 56603), (85, 56699), (88, 56717), (89, 56726),

Gene: Sheila_63 Start: 55400, Stop: 56164, Start Num: 14

Candidate Starts for Sheila_63:

(Start: 7 @55310 has 22 MA's), (Start: 9 @55361 has 3 MA's), (10, 55364), (12, 55382), (Start: 14 @55400 has 88 MA's), (Start: 15 @55421 has 3 MA's), (Start: 18 @55433 has 10 MA's), (23, 55460), (28, 55556), (31, 55583), (34, 55595), (38, 55646), (42, 55661), (44, 55682), (46, 55685), (48, 55700), (55, 55754), (59, 55781), (60, 55787), (75, 55973), (85, 56069), (88, 56087), (89, 56096),

Gene: SirJeffery_65 Start: 57604, Stop: 58314, Start Num: 16

Candidate Starts for SirJeffery_65:

(Start: 13 @57577 has 4 MA's), (Start: 16 @57604 has 1 MA's), (22, 57628), (29, 57742), (37, 57799), (48, 57871), (50, 57910), (53, 57919), (61, 57964), (69, 58069), (71, 58078), (84, 58222), (92, 58291),

Gene: Slatt_67 Start: 56314, Stop: 57078, Start Num: 14

Candidate Starts for Slatt_67:

(Start: 7 @56224 has 22 MA's), (Start: 9 @56275 has 3 MA's), (10, 56278), (12, 56296), (Start: 14 @56314 has 88 MA's), (Start: 15 @56335 has 3 MA's), (Start: 18 @56347 has 10 MA's), (23, 56374), (31, 56497), (34, 56509), (38, 56560), (42, 56575), (44, 56596), (46, 56599), (48, 56614), (55, 56668), (59, 56695), (60, 56701), (75, 56887), (85, 56983), (88, 57001), (89, 57010),

Gene: Solosis_65 Start: 56013, Stop: 56777, Start Num: 14

Candidate Starts for Solosis_65:

(Start: 7 @55923 has 22 MA's), (Start: 9 @55974 has 3 MA's), (10, 55977), (12, 55995), (Start: 14 @56013 has 88 MA's), (Start: 15 @56034 has 3 MA's), (Start: 18 @56046 has 10 MA's), (23, 56073), (31, 56196), (34, 56208), (38, 56259), (42, 56274), (44, 56295), (46, 56298), (48, 56313), (55, 56367), (59, 56394), (60, 56400), (75, 56586), (85, 56682), (88, 56700), (89, 56709),

Gene: Sophia_65 Start: 56006, Stop: 56770, Start Num: 14

Candidate Starts for Sophia_65:

(Start: 7 @55916 has 22 MA's), (Start: 9 @55967 has 3 MA's), (10, 55970), (12, 55988), (Start: 14 @56006 has 88 MA's), (Start: 15 @56027 has 3 MA's), (Start: 18 @56039 has 10 MA's), (23, 56066), (31, 56189), (34, 56201), (38, 56252), (42, 56267), (44, 56288), (46, 56291), (48, 56306), (55, 56360), (59, 56387), (60, 56393), (75, 56579), (85, 56675), (88, 56693), (89, 56702),

Gene: Soto_64 Start: 55483, Stop: 56337, Start Num: 7

Candidate Starts for Soto_64:

(Start: 7 @55483 has 22 MA's), (Start: 9 @55534 has 3 MA's), (10, 55537), (12, 55555), (Start: 14 @55573 has 88 MA's), (Start: 15 @55594 has 3 MA's), (Start: 18 @55606 has 10 MA's), (23, 55633), (28, 55729), (31, 55756), (34, 55768), (38, 55819), (42, 55834), (44, 55855), (46, 55858), (48, 55873), (55, 55927), (59, 55954), (60, 55960), (75, 56146), (85, 56242), (88, 56260), (89, 56269),

Gene: Squid_66 Start: 56216, Stop: 57070, Start Num: 7

Candidate Starts for Squid_66:

(Start: 7 @56216 has 22 MA's), (Start: 9 @56267 has 3 MA's), (10, 56270), (12, 56288), (Start: 14 @56306 has 88 MA's), (Start: 15 @56327 has 3 MA's), (Start: 18 @56339 has 10 MA's), (23, 56366), (31, 56489), (34, 56501), (38, 56552), (42, 56567), (44, 56588), (46, 56591), (48, 56606), (55, 56660), (59, 56687), (60, 56693), (75, 56879), (85, 56975), (88, 56993), (89, 57002),

Gene: Squiggle_66 Start: 56025, Stop: 56789, Start Num: 14

Candidate Starts for Squiggle_66:

(5, 55899), (Start: 7 @55935 has 22 MA's), (Start: 9 @55986 has 3 MA's), (10, 55989), (12, 56007), (Start: 14 @56025 has 88 MA's), (Start: 15 @56046 has 3 MA's), (Start: 18 @56058 has 10 MA's), (23, 56085), (31, 56208), (34, 56220), (38, 56271), (42, 56286), (44, 56307), (46, 56310), (48, 56325), (55, 56379), (59, 56406), (60, 56412), (75, 56598), (85, 56694), (88, 56712), (89, 56721),

Gene: Suigeneris_67 Start: 57719, Stop: 58456, Start Num: 13

Candidate Starts for Suigeneris_67:

(Start: 13 @57719 has 4 MA's), (Start: 16 @57746 has 1 MA's), (22, 57770), (29, 57884), (37, 57941), (48, 58013), (50, 58052), (53, 58061), (61, 58106), (69, 58211), (71, 58220), (84, 58364), (92, 58433),

Gene: Surely_67 Start: 56596, Stop: 57360, Start Num: 14

Candidate Starts for Surely_67:

(Start: 7 @56506 has 22 MA's), (Start: 9 @56557 has 3 MA's), (10, 56560), (12, 56578), (Start: 14 @56596 has 88 MA's), (Start: 15 @56617 has 3 MA's), (Start: 18 @56629 has 10 MA's), (23, 56656), (31, 56779), (34, 56791), (38, 56842), (42, 56857), (44, 56878), (46, 56881), (48, 56896), (55, 56950), (59, 56977), (60, 56983), (75, 57169), (85, 57265), (88, 57283), (89, 57292),

Gene: Swish_67 Start: 56315, Stop: 57046, Start Num: 18

Candidate Starts for Swish_67:

(Start: 7 @56192 has 22 MA's), (Start: 9 @56243 has 3 MA's), (10, 56246), (12, 56264), (Start: 14 @56282 has 88 MA's), (Start: 15 @56303 has 3 MA's), (Start: 18 @56315 has 10 MA's), (23, 56342), (31, 56465), (34, 56477), (38, 56528), (42, 56543), (44, 56564), (46, 56567), (48, 56582), (55, 56636), (59, 56663), (60, 56669), (75, 56855), (85, 56951), (88, 56969), (89, 56978),

Gene: TallGrassMM_65 Start: 55922, Stop: 56686, Start Num: 14

Candidate Starts for TallGrassMM_65:

(Start: 7 @55832 has 22 MA's), (Start: 9 @55883 has 3 MA's), (10, 55886), (12, 55904), (Start: 14 @55922 has 88 MA's), (Start: 15 @55943 has 3 MA's), (Start: 18 @55955 has 10 MA's), (23, 55982), (31, 56105), (34, 56117), (38, 56168), (42, 56183), (44, 56204), (46, 56207), (48, 56222), (55, 56276), (59, 56303), (60, 56309), (75, 56495), (85, 56591), (88, 56609), (89, 56618),

Gene: Thora_65 Start: 56362, Stop: 57126, Start Num: 14

Candidate Starts for Thora_65:

(Start: 7 @56272 has 22 MA's), (Start: 9 @56323 has 3 MA's), (10, 56326), (12, 56344), (Start: 14 @56362 has 88 MA's), (Start: 15 @56383 has 3 MA's), (Start: 18 @56395 has 10 MA's), (23, 56422), (31, 56545), (34, 56557), (38, 56608), (42, 56623), (44, 56644), (46, 56647), (48, 56662), (55, 56716), (59, 56743), (60, 56749), (75, 56935), (85, 57031), (88, 57049), (89, 57058),

Gene: TomBombadil_67 Start: 56580, Stop: 57344, Start Num: 14

Candidate Starts for TomBombadil_67:

(Start: 7 @56490 has 22 MA's), (Start: 9 @56541 has 3 MA's), (10, 56544), (12, 56562), (Start: 14 @56580 has 88 MA's), (Start: 15 @56601 has 3 MA's), (Start: 18 @56613 has 10 MA's), (23, 56640), (31, 56763), (34, 56775), (38, 56826), (42, 56841), (44, 56862), (46, 56865), (48, 56880), (55, 56934), (59, 56961), (60, 56967), (75, 57153), (85, 57249), (88, 57267), (89, 57276),

Gene: TooFast2Furius_66 Start: 56273, Stop: 57037, Start Num: 14

Candidate Starts for TooFast2Furius_66:

(Start: 7 @56183 has 22 MA's), (Start: 9 @56234 has 3 MA's), (10, 56237), (12, 56255), (Start: 14 @56273 has 88 MA's), (Start: 15 @56294 has 3 MA's), (Start: 18 @56306 has 10 MA's), (23, 56333), (31, 56456), (34, 56468), (38, 56519), (42, 56534), (44, 56555), (46, 56558), (48, 56573), (55, 56627), (59, 56654), (60, 56660), (75, 56846), (85, 56942), (88, 56960), (89, 56969),

Gene: Trypo_68 Start: 56747, Stop: 57511, Start Num: 14

Candidate Starts for Trypo_68:

(Start: 7 @56657 has 22 MA's), (Start: 9 @56708 has 3 MA's), (10, 56711), (12, 56729), (Start: 14 @56747 has 88 MA's), (Start: 15 @56768 has 3 MA's), (Start: 18 @56780 has 10 MA's), (23, 56807), (31, 56930), (34, 56942), (38, 56993), (42, 57008), (44, 57029), (46, 57032), (48, 57047), (55, 57101), (59, 57128), (60, 57134), (75, 57320), (85, 57416), (88, 57434), (89, 57443),

Gene: TyrionL_67 Start: 56025, Stop: 56879, Start Num: 7

Candidate Starts for TyrionL_67:

(Start: 7 @56025 has 22 MA's), (Start: 9 @56076 has 3 MA's), (10, 56079), (12, 56097), (Start: 14 @56115 has 88 MA's), (Start: 15 @56136 has 3 MA's), (Start: 18 @56148 has 10 MA's), (23, 56175), (31, 56298), (34, 56310), (38, 56361), (42, 56376), (44, 56397), (46, 56400), (48, 56415), (55, 56469), (59, 56496), (60, 56502), (75, 56688), (85, 56784), (88, 56802), (89, 56811),

Gene: UncleHowie_64 Start: 55717, Stop: 56481, Start Num: 14

Candidate Starts for UncleHowie_64:

(Start: 7 @55627 has 22 MA's), (Start: 9 @55678 has 3 MA's), (10, 55681), (12, 55699), (Start: 14 @55717 has 88 MA's), (Start: 15 @55738 has 3 MA's), (Start: 18 @55750 has 10 MA's), (23, 55777), (31, 55900), (34, 55912), (38, 55963), (42, 55978), (44, 55999), (46, 56002), (48, 56017), (55, 56071), (59, 56098), (60, 56104), (75, 56290), (85, 56386), (88, 56404), (89, 56413),

Gene: Veritas_66 Start: 56215, Stop: 56958, Start Num: 15

Candidate Starts for Veritas_66:

(Start: 7 @56104 has 22 MA's), (Start: 9 @56155 has 3 MA's), (10, 56158), (12, 56176), (Start: 14 @56194 has 88 MA's), (Start: 15 @56215 has 3 MA's), (Start: 18 @56227 has 10 MA's), (23, 56254), (31, 56377), (34, 56389), (38, 56440), (42, 56455), (44, 56476), (46, 56479), (48, 56494), (55, 56548), (59, 56575), (60, 56581), (75, 56767), (85, 56863), (88, 56881), (89, 56890),

Gene: Vista_65 Start: 56018, Stop: 56782, Start Num: 14

Candidate Starts for Vista_65:

(Start: 7 @55928 has 22 MA's), (Start: 9 @55979 has 3 MA's), (10, 55982), (12, 56000), (Start: 14 @56018 has 88 MA's), (Start: 15 @56039 has 3 MA's), (Start: 18 @56051 has 10 MA's), (23, 56078), (31, 56201), (34, 56213), (38, 56264), (42, 56279), (44, 56300), (46, 56303), (48, 56318), (55, 56372), (59, 56399), (60, 56405), (75, 56591), (85, 56687), (88, 56705), (89, 56714),

Gene: Vivaldi_67 Start: 56479, Stop: 57243, Start Num: 14

Candidate Starts for Vivaldi_67:

(Start: 7 @56389 has 22 MA's), (Start: 9 @56440 has 3 MA's), (10, 56443), (12, 56461), (Start: 14 @56479 has 88 MA's), (Start: 15 @56500 has 3 MA's), (Start: 18 @56512 has 10 MA's), (23, 56539), (31, 56662), (34, 56674), (38, 56725), (42, 56740), (44, 56761), (46, 56764), (48, 56779), (55, 56833), (59, 56860), (60, 56866), (75, 57052), (85, 57148), (88, 57166), (89, 57175),

Gene: Vortex_66 Start: 56302, Stop: 57066, Start Num: 14

Candidate Starts for Vortex_66:

(Start: 9 @56263 has 3 MA's), (10, 56266), (12, 56284), (Start: 14 @56302 has 88 MA's), (Start: 15 @56323 has 3 MA's), (Start: 18 @56335 has 10 MA's), (23, 56362), (31, 56485), (34, 56497), (38, 56548), (42, 56563), (44, 56584), (46, 56587), (48, 56602), (55, 56656), (59, 56683), (60, 56689), (75, 56875), (85, 56971), (88, 56989), (89, 56998),

Gene: Wallhey_67 Start: 56125, Stop: 56889, Start Num: 14

Candidate Starts for Wallhey_67:

(Start: 7 @56035 has 22 MA's), (Start: 9 @56086 has 3 MA's), (10, 56089), (12, 56107), (Start: 14 @56125 has 88 MA's), (Start: 15 @56146 has 3 MA's), (Start: 18 @56158 has 10 MA's), (23, 56185), (31, 56308), (34, 56320), (38, 56371), (42, 56386), (44, 56407), (46, 56410), (48, 56425), (55, 56479), (59, 56506), (60, 56512), (75, 56698), (85, 56794), (88, 56812), (89, 56821),

Gene: Weher20_64 Start: 56636, Stop: 57400, Start Num: 14

Candidate Starts for Weher20_64:

(Start: 7 @56546 has 22 MA's), (Start: 9 @56597 has 3 MA's), (10, 56600), (12, 56618), (Start: 14 @56636 has 88 MA's), (Start: 15 @56657 has 3 MA's), (Start: 18 @56669 has 10 MA's), (23, 56696), (31, 56819), (34, 56831), (38, 56882), (42, 56897), (44, 56918), (46, 56921), (48, 56936), (55, 56990), (59, 57017), (60, 57023), (75, 57209), (85, 57305), (88, 57323), (89, 57332),

Gene: Yoshand_67 Start: 56295, Stop: 57059, Start Num: 14

Candidate Starts for Yoshand_67:

(Start: 7 @56205 has 22 MA's), (Start: 9 @56256 has 3 MA's), (10, 56259), (12, 56277), (Start: 14 @56295 has 88 MA's), (Start: 15 @56316 has 3 MA's), (Start: 18 @56328 has 10 MA's), (23, 56355), (31, 56478), (34, 56490), (38, 56541), (42, 56556), (44, 56577), (46, 56580), (48, 56595), (55, 56649), (59, 56676), (60, 56682), (75, 56868), (85, 56964), (88, 56982), (89, 56991),

Gene: YouGoGlencoco_67 Start: 56307, Stop: 57071, Start Num: 14

Candidate Starts for YouGoGlencoco_67:

(Start: 7 @56217 has 22 MA's), (Start: 9 @56268 has 3 MA's), (10, 56271), (12, 56289), (Start: 14 @56307 has 88 MA's), (Start: 15 @56328 has 3 MA's), (Start: 18 @56340 has 10 MA's), (23, 56367), (31, 56490), (34, 56502), (38, 56553), (42, 56568), (44, 56589), (46, 56592), (48, 56607), (55, 56661), (59, 56688), (60, 56694), (75, 56880), (85, 56976), (88, 56994), (89, 57003),

Gene: Zelda_67 Start: 56647, Stop: 57411, Start Num: 14

Candidate Starts for Zelda_67:

(Start: 7 @56557 has 22 MA's), (Start: 9 @56608 has 3 MA's), (10, 56611), (12, 56629), (Start: 14 @56647 has 88 MA's), (Start: 15 @56668 has 3 MA's), (Start: 18 @56680 has 10 MA's), (23, 56707), (31, 56830), (34, 56842), (38, 56893), (42, 56908), (44, 56929), (46, 56932), (48, 56947), (55, 57001), (59, 57028), (60, 57034), (75, 57220), (85, 57316), (88, 57334), (89, 57343),

Gene: Zonia_67 Start: 56576, Stop: 57340, Start Num: 14

Candidate Starts for Zonia_67:

(Start: 7 @56486 has 22 MA's), (Start: 9 @56537 has 3 MA's), (10, 56540), (12, 56558), (Start: 14 @56576 has 88 MA's), (Start: 15 @56597 has 3 MA's), (Start: 18 @56609 has 10 MA's), (23, 56636), (31, 56759), (34, 56771), (38, 56822), (42, 56837), (44, 56858), (46, 56861), (48, 56876), (55, 56930), (59, 56957), (60, 56963), (75, 57149), (85, 57245), (88, 57263), (89, 57272),