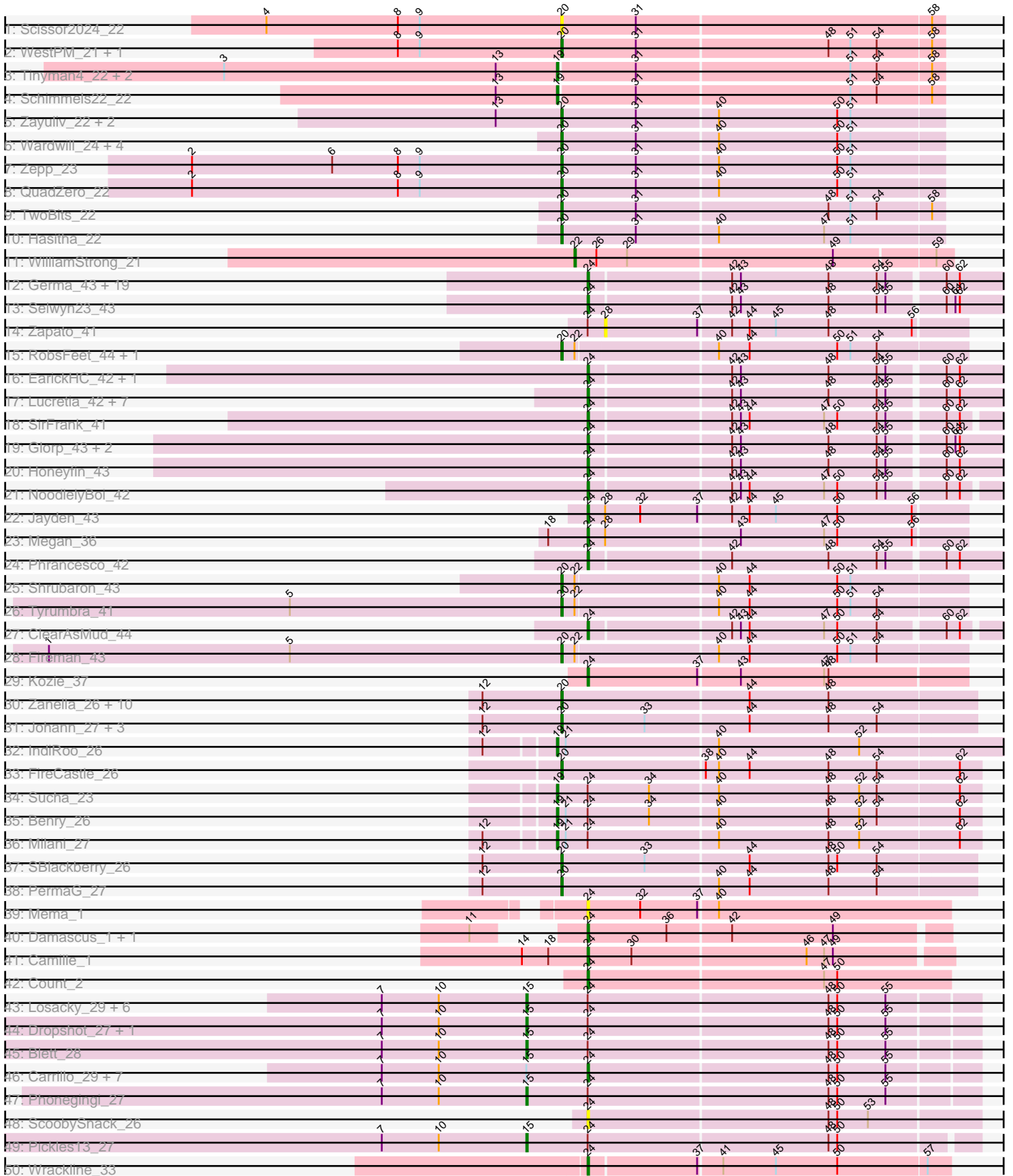


Pham 303204





Note: Tracks are now grouped by subcluster and scaled. Switching in subcluster is indicated by changes in track color. Track scale is now set by default to display the region 30 bp upstream of start 1 to 30 bp downstream of the last possible start. If this default region is judged to be packed too tightly with annotated starts, the track will be further scaled to only show that region of the ORF with annotated starts. This action will be indicated by adding "Zoomed" to the title. For starts, yellow indicates the location of called starts comprised solely of Glimmer/GeneMark auto-annotations, green indicates the location of called starts with at least 1 manual gene annotation.

## Pham 303204 Report

This analysis was run 06/08/26 on database version 649.

Pham number 303204 has 121 members, 25 are drafts.

Phages represented in each track:

- Track 1 : Scissor2024\_22
- Track 2 : WestPM\_21, Penta\_21
- Track 3 : Tinyman4\_22, Kavo\_21, HerculesXL\_22
- Track 4 : Schimmels22\_22
- Track 5 : Zayuliv\_22, Greenlvy\_22, BaronJohn\_23
- Track 6 : Wardwill\_24, LilTerminator\_22, Librie\_22, Fulton\_22, CaptainRex\_22
- Track 7 : Zepp\_23
- Track 8 : QuadZero\_22
- Track 9 : TwoBits\_22
- Track 10 : Hasitha\_22
- Track 11 : WilliamStrong\_21
- Track 12 : Germa\_43, CrazyRich\_41, Ramiel05\_41, Kowalski\_41, Hermeonysus\_41, Ganandorf\_41, BeagleBug\_41, Antares\_42, Phorgeous\_41, Crisis\_43, Jollipop\_42, Quhwah\_45, Onika\_41, BrazzalePHS\_41, Cranjis\_43, PhedwardCullen\_41, Paschalis\_41, Savannah\_41, Scumberland\_43, LittleFortune\_43
- Track 13 : Selwyn23\_43
- Track 14 : Zapato\_41
- Track 15 : RobsFeet\_44, Metamorphoo\_43
- Track 16 : EarickHC\_42, KaiHaiDragon\_42
- Track 17 : Lucretia\_42, Busephilis\_41, PierreOrion\_42, Piperis\_42, Pulchra\_43, Rockwell\_41, Shotgun\_41, PiperSansNom\_42
- Track 18 : SirFrank\_41
- Track 19 : Glorp\_43, Jefe\_42, Yeti\_42
- Track 20 : Honeyfin\_43
- Track 21 : NoodlelyBoi\_42
- Track 22 : Jayden\_43
- Track 23 : Megan\_36
- Track 24 : Phrancesco\_42
- Track 25 : Shrubaron\_43
- Track 26 : Tyumbra\_41
- Track 27 : ClearAsMud\_44
- Track 28 : Fireman\_43
- Track 29 : Kozie\_37
- Track 30 : Zanella\_26, Jera\_27, Alove\_26, Rasovi\_26, Linayshia\_26, Htur\_26, Rootkit7\_26, Labela\_28, AyoTeo\_28, Typher\_28, TurboVicky\_26
- Track 31 : Johann\_27, Olympi\_28, Cicada\_28, Goodman\_27

- Track 32 : IndiRoo\_26
- Track 33 : FireCastle\_26
- Track 34 : Sucha\_23
- Track 35 : Benry\_26
- Track 36 : Milani\_27
- Track 37 : SBlackberry\_26
- Track 38 : PermaG\_27
- Track 39 : Mema\_1
- Track 40 : Damascus\_1, DizzyRudy\_1
- Track 41 : Camille\_1
- Track 42 : Count\_2
- Track 43 : Losacky\_29, Bush\_28, CookieDog\_28, Antuna\_28, Appa\_27, PhillyJawn\_28, Mariel\_31
- Track 44 : Dropshot\_27, Warren\_28
- Track 45 : Blett\_28
- Track 46 : Carrillo\_29, NCRodriguez\_29, Phingu\_30, Guzman\_29, Jakelyne\_30, Violeta\_29, Winchester007\_43, MenE\_28
- Track 47 : Phonegingi\_27
- Track 48 : ScoobySnack\_26
- Track 49 : Pickles13\_27
- Track 50 : Wrackline\_33
- Track 51 : Gingerbug\_25
- Track 52 : Sweetums\_29
- Track 53 : MisoSoup\_37
- Track 54 : FuzzBuster\_48

***Summary of Final Annotations (See graph section above for start numbers):***

The start number called the most often in the published annotations is 24, it was called in 44 of the 96 non-draft genes in the pham.

Genes that call this "Most Annotated" start:

- Antares\_42, BeagleBug\_41, BrazzalePHS\_41, Busephilis\_41, Camille\_1, Carrillo\_29, ClearAsMud\_44, Count\_2, Cranjis\_43, CrazyRich\_41, Crisis\_43, Damascus\_1, DizzyRudy\_1, EarickHC\_42, FuzzBuster\_48, Ganandorf\_41, Germa\_43, Glorp\_43, Guzman\_29, Hermeonysus\_41, Honeyfin\_43, Jakelyne\_30, Jayden\_43, Jefe\_42, Jollipop\_42, KaiHaiDragon\_42, Kowalski\_41, Kozie\_37, LittleFortune\_43, Lucretia\_42, Megan\_36, Mema\_1, MenE\_28, MisoSoup\_37, NCRodriguez\_29, NoodlelyBoi\_42, Onika\_41, Paschalis\_41, PhedwardCullen\_41, Phingu\_30, Phorgeous\_41, Phrancesco\_42, PierreOrion\_42, PiperSansNom\_42, Piperis\_42, Pulchra\_43, Quhwah\_45, Ramiel05\_41, Rockwell\_41, Savannah\_41, ScoobySnack\_26, Scumberland\_43, Selwyn23\_43, Shotgun\_41, SirFrank\_41, Violeta\_29, Winchester007\_43, Wrackline\_33, Yeti\_42,

Genes that have the "Most Annotated" start but do not call it:

- Antuna\_28, Appa\_27, Benry\_26, Blett\_28, Bush\_28, CookieDog\_28, Dropshot\_27, Losacky\_29, Mariel\_31, Milani\_27, PhillyJawn\_28, Phonegingi\_27, Pickles13\_27, Sucha\_23, Sweetums\_29, Warren\_28, Zapato\_41,

Genes that do not have the "Most Annotated" start:

- Alove\_26, AyoTeo\_28, BaronJohn\_23, CaptainRex\_22, Cicada\_28, FireCastle\_26, Fireman\_43, Fulton\_22, Gingerbug\_25, Goodman\_27, Greenlvy\_22, Hasitha\_22, HerculesXL\_22, Htur\_26, IndiRoo\_26, Jera\_27, Johann\_27, Kavov\_21, Labella\_28, Librie\_22, LilTerminator\_22, Linayshia\_26, Metamorphoo\_43, Olympi\_28, Penta\_21, PermaG\_27, QuadZero\_22, Rasovi\_26, RobsFeet\_44, Rootkit7\_26, SBlackberry\_26, Schimmels22\_22, Scissor2024\_22, Shrubaron\_43, Tinyman4\_22, TurboVicky\_26, TwoBits\_22, Typher\_28, Tyrumbra\_41, Wardwill\_24, WestPM\_21, WilliamStrong\_21, Zanella\_26, Zayuliv\_22, Zepp\_23,

### Summary by start number:

#### Start 15:

- Found in 20 of 121 ( 16.5% ) of genes in pham
- Manual Annotations of this start: 10 of 96
- Called 60.0% of time when present
- Phage (with cluster) where this start called: Antuna\_28 (GA), Appa\_27 (GA), Blett\_28 (GA), Bush\_28 (GA), CookieDog\_28 (GA), Dropshot\_27 (GA), Losacky\_29 (GA), Mariel\_31 (GA), PhillyJawn\_28 (GA), Phonegingi\_27 (GA), Pickles13\_27 (GA), Warren\_28 (GA),

#### Start 19:

- Found in 8 of 121 ( 6.6% ) of genes in pham
- Manual Annotations of this start: 7 of 96
- Called 100.0% of time when present
- Phage (with cluster) where this start called: Berry\_26 (EJ), HerculesXL\_22 (EA11), IndiRoo\_26 (EJ), Kavov\_21 (EA11), Milani\_27 (EJ), Schimmels22\_22 (EA11), Sucha\_23 (EJ), Tinyman4\_22 (EA11),

#### Start 20:

- Found in 38 of 121 ( 31.4% ) of genes in pham
- Manual Annotations of this start: 32 of 96
- Called 100.0% of time when present
- Phage (with cluster) where this start called: Alove\_26 (EJ), AyoTeo\_28 (EJ), BaronJohn\_23 (EA5), CaptainRex\_22 (EA5), Cicada\_28 (EJ), FireCastle\_26 (EJ), Fireman\_43 (EC), Fulton\_22 (EA5), Goodman\_27 (EJ), Greenlvy\_22 (EA5), Hasitha\_22 (EA5), Htur\_26 (EJ), Jera\_27 (EJ), Johann\_27 (EJ), Labella\_28 (EJ), Librie\_22 (EA5), LilTerminator\_22 (EA5), Linayshia\_26 (EJ), Metamorphoo\_43 (EC), Olympi\_28 (EJ), Penta\_21 (EA11), PermaG\_27 (EJ), QuadZero\_22 (EA5), Rasovi\_26 (EJ), RobsFeet\_44 (EC), Rootkit7\_26 (EJ), SBlackberry\_26 (EJ), Scissor2024\_22 (EA11), Shrubaron\_43 (EC), TurboVicky\_26 (EJ), TwoBits\_22 (EA5), Typher\_28 (EJ), Tyrumbra\_41 (EC), Wardwill\_24 (EA5), WestPM\_21 (EA11), Zanella\_26 (EJ), Zayuliv\_22 (EA5), Zepp\_23 (EA5),

#### Start 22:

- Found in 6 of 121 ( 5.0% ) of genes in pham
- Manual Annotations of this start: 1 of 96
- Called 16.7% of time when present
- Phage (with cluster) where this start called: WilliamStrong\_21 (EA6),

#### Start 23:

- Found in 1 of 121 ( 0.8% ) of genes in pham
- Manual Annotations of this start: 1 of 96
- Called 100.0% of time when present

- Phage (with cluster) where this start called: Gingerbug\_25 (GF),

#### Start 24:

- Found in 76 of 121 ( 62.8% ) of genes in pham
- Manual Annotations of this start: 44 of 96
- Called 77.6% of time when present
- Phage (with cluster) where this start called: Antares\_42 (EC), BeagleBug\_41 (EC), BrazzalePHS\_41 (EC), Busephilis\_41 (EC), Camille\_1 (EL), Carrillo\_29 (GA), ClearAsMud\_44 (EC), Count\_2 (EL), Cranjis\_43 (EC), CrazyRich\_41 (EC), Crisis\_43 (EC), Damascus\_1 (EL), DizzyRudy\_1 (EL), EarickHC\_42 (EC), FuzzBuster\_48 (GM), Ganandorf\_41 (EC), Germa\_43 (EC), Glorp\_43 (EC), Guzman\_29 (GA), Hermeonysus\_41 (EC), Honeyfin\_43 (EC), Jakelyne\_30 (GA), Jayden\_43 (EC), Jefe\_42 (EC), Jollipop\_42 (EC), KaiHaiDragon\_42 (EC), Kowalski\_41 (EC), Kozie\_37 (EI), LittleFortune\_43 (EC), Lucretia\_42 (EC), Megan\_36 (EC), Mema\_1 (EL), MenE\_28 (GA), MisoSoup\_37 (GM), NCRodriguez\_29 (GA), NoodlelyBoi\_42 (EC), Onika\_41 (EC), Paschalis\_41 (EC), PhedwardCullen\_41 (EC), Phingu\_30 (GA), Phorgeous\_41 (EC), Phrancesco\_42 (EC), PierreOrion\_42 (EC), PiperSansNom\_42 (EC), Piperis\_42 (EC), Pulchra\_43 (EC), Quhwah\_45 (EC), Ramiel05\_41 (EC), Rockwell\_41 (EC), Savannah\_41 (EC), ScoobySnack\_26 (GA), Scumberland\_43 (EC), Selwyn23\_43 (EC), Shotgun\_41 (EC), SirFrank\_41 (EC), Violeta\_29 (GA), Winchester007\_43 (GA), Wrackline\_33 (GF), Yeti\_42 (EC),

#### Start 25:

- Found in 1 of 121 ( 0.8% ) of genes in pham
- Manual Annotations of this start: 1 of 96
- Called 100.0% of time when present
- Phage (with cluster) where this start called: Sweetums\_29 (GF),

#### Start 28:

- Found in 3 of 121 ( 2.5% ) of genes in pham
- No Manual Annotations of this start.
- Called 33.3% of time when present
- Phage (with cluster) where this start called: Zapato\_41 (EC),

### Summary by clusters:

There are 10 clusters represented in this pham: EL, EA11, EJ, EC, GF, GA, EI, GM, EA5, EA6,

#### Info for manual annotations of cluster EA11:

- Start number 19 was manually annotated 3 times for cluster EA11.
- Start number 20 was manually annotated 1 time for cluster EA11.

#### Info for manual annotations of cluster EA5:

- Start number 20 was manually annotated 11 times for cluster EA5.

#### Info for manual annotations of cluster EA6:

- Start number 22 was manually annotated 1 time for cluster EA6.

#### Info for manual annotations of cluster EC:

- Start number 20 was manually annotated 5 times for cluster EC.
- Start number 24 was manually annotated 36 times for cluster EC.

Info for manual annotations of cluster EI:

- Start number 24 was manually annotated 1 time for cluster EI.

Info for manual annotations of cluster EJ:

- Start number 19 was manually annotated 4 times for cluster EJ.
- Start number 20 was manually annotated 15 times for cluster EJ.

Info for manual annotations of cluster EL:

- Start number 24 was manually annotated 4 times for cluster EL.

Info for manual annotations of cluster GA:

- Start number 15 was manually annotated 10 times for cluster GA.
- Start number 24 was manually annotated 1 time for cluster GA.

Info for manual annotations of cluster GF:

- Start number 23 was manually annotated 1 time for cluster GF.
- Start number 24 was manually annotated 1 time for cluster GF.
- Start number 25 was manually annotated 1 time for cluster GF.

Info for manual annotations of cluster GM:

- Start number 24 was manually annotated 1 time for cluster GM.

### ***Gene Information:***

Gene: Alove\_26 Start: 20201, Stop: 20479, Start Num: 20

Candidate Starts for Alove\_26:

(12, 20147), (Start: 20 @20201 has 32 MA's), (44, 20327), (48, 20381),

Gene: Antares\_42 Start: 29929, Stop: 30222, Start Num: 24

Candidate Starts for Antares\_42:

(Start: 24 @29929 has 44 MA's), (42, 30022), (43, 30028), (48, 30088), (54, 30121), (55, 30127), (60, 30163), (62, 30172),

Gene: Antuna\_28 Start: 18326, Stop: 18628, Start Num: 15

Candidate Starts for Antuna\_28:

(7, 18227), (10, 18266), (Start: 15 @18326 has 10 MA's), (Start: 24 @18368 has 44 MA's), (48, 18530), (50, 18536), (55, 18569),

Gene: Appa\_27 Start: 18188, Stop: 18493, Start Num: 15

Candidate Starts for Appa\_27:

(7, 18089), (10, 18128), (Start: 15 @18188 has 10 MA's), (Start: 24 @18230 has 44 MA's), (48, 18392), (50, 18398), (55, 18431),

Gene: AyoTeo\_28 Start: 20330, Stop: 20608, Start Num: 20

Candidate Starts for AyoTeo\_28:

(12, 20276), (Start: 20 @20330 has 32 MA's), (44, 20456), (48, 20510),

Gene: BaronJohn\_23 Start: 17074, Stop: 17331, Start Num: 20

Candidate Starts for BaronJohn\_23:

(13, 17032), (Start: 20 @17074 has 32 MA's), (31, 17125), (40, 17179), (50, 17260), (51, 17269),

Gene: BeagleBug\_41 Start: 29710, Stop: 30003, Start Num: 24

Candidate Starts for BeagleBug\_41:

(Start: 24 @29710 has 44 MA's), (42, 29803), (43, 29809), (48, 29869), (54, 29902), (55, 29908), (60, 29944), (62, 29953),

Gene: Benry\_26 Start: 18897, Stop: 19181, Start Num: 19

Candidate Starts for Benry\_26:

(Start: 19 @18897 has 7 MA's), (21, 18903), (Start: 24 @18918 has 44 MA's), (34, 18960), (40, 19005), (48, 19080), (52, 19101), (54, 19113), (62, 19167),

Gene: Blett\_28 Start: 18338, Stop: 18640, Start Num: 15

Candidate Starts for Blett\_28:

(7, 18239), (10, 18278), (Start: 15 @18338 has 10 MA's), (Start: 24 @18380 has 44 MA's), (48, 18542), (50, 18548), (55, 18581),

Gene: BrazzalePHS\_41 Start: 29724, Stop: 30017, Start Num: 24

Candidate Starts for BrazzalePHS\_41:

(Start: 24 @29724 has 44 MA's), (42, 29817), (43, 29823), (48, 29883), (54, 29916), (55, 29922), (60, 29958), (62, 29967),

Gene: Busephilis\_41 Start: 29665, Stop: 29958, Start Num: 24

Candidate Starts for Busephilis\_41:

(Start: 24 @29665 has 44 MA's), (42, 29758), (43, 29764), (48, 29824), (54, 29857), (55, 29863), (60, 29899), (62, 29908),

Gene: Bush\_28 Start: 18316, Stop: 18618, Start Num: 15

Candidate Starts for Bush\_28:

(7, 18217), (10, 18256), (Start: 15 @18316 has 10 MA's), (Start: 24 @18358 has 44 MA's), (48, 18520), (50, 18526), (55, 18559),

Gene: Camille\_1 Start: 116, Stop: 358, Start Num: 24

Candidate Starts for Camille\_1:

(14, 71), (18, 89), (Start: 24 @116 has 44 MA's), (30, 146), (46, 263), (47, 275), (49, 281),

Gene: CaptainRex\_22 Start: 16502, Stop: 16759, Start Num: 20

Candidate Starts for CaptainRex\_22:

(Start: 20 @16502 has 32 MA's), (31, 16553), (40, 16607), (50, 16688), (51, 16697),

Gene: Carrillo\_29 Start: 18337, Stop: 18597, Start Num: 24

Candidate Starts for Carrillo\_29:

(7, 18196), (10, 18235), (Start: 15 @18295 has 10 MA's), (Start: 24 @18337 has 44 MA's), (48, 18499), (50, 18505), (55, 18538),

Gene: Cicada\_28 Start: 20423, Stop: 20701, Start Num: 20

Candidate Starts for Cicada\_28:

(12, 20369), (Start: 20 @20423 has 32 MA's), (33, 20480), (44, 20549), (48, 20603), (54, 20636),

Gene: ClearAsMud\_44 Start: 29829, Stop: 30116, Start Num: 24

Candidate Starts for ClearAsMud\_44:

(Start: 24 @29829 has 44 MA's), (42, 29922), (43, 29928), (44, 29934), (47, 29985), (50, 29994), (54, 30021), (60, 30063), (62, 30072),

Gene: CookieDog\_28 Start: 18316, Stop: 18615, Start Num: 15

Candidate Starts for CookieDog\_28:

(7, 18217), (10, 18256), (Start: 15 @18316 has 10 MA's), (Start: 24 @18358 has 44 MA's), (48, 18520), (50, 18526), (55, 18559),

Gene: Count\_2 Start: 251, Stop: 496, Start Num: 24

Candidate Starts for Count\_2:

(Start: 24 @251 has 44 MA's), (47, 410), (50, 419),

Gene: Cranjjs\_43 Start: 29884, Stop: 30177, Start Num: 24

Candidate Starts for Cranjjs\_43:

(Start: 24 @29884 has 44 MA's), (42, 29977), (43, 29983), (48, 30043), (54, 30076), (55, 30082), (60, 30118), (62, 30127),

Gene: CrazyRich\_41 Start: 29693, Stop: 29986, Start Num: 24

Candidate Starts for CrazyRich\_41:

(Start: 24 @29693 has 44 MA's), (42, 29786), (43, 29792), (48, 29852), (54, 29885), (55, 29891), (60, 29927), (62, 29936),

Gene: Crisis\_43 Start: 29684, Stop: 29977, Start Num: 24

Candidate Starts for Crisis\_43:

(Start: 24 @29684 has 44 MA's), (42, 29777), (43, 29783), (48, 29843), (54, 29876), (55, 29882), (60, 29918), (62, 29927),

Gene: Damascus\_1 Start: 74, Stop: 313, Start Num: 24

Candidate Starts for Damascus\_1:

(11, 35), (Start: 24 @74 has 44 MA's), (36, 128), (42, 170), (49, 239),

Gene: DizzyRudy\_1 Start: 74, Stop: 313, Start Num: 24

Candidate Starts for DizzyRudy\_1:

(11, 35), (Start: 24 @74 has 44 MA's), (36, 128), (42, 170), (49, 239),

Gene: Dropshot\_27 Start: 18188, Stop: 18490, Start Num: 15

Candidate Starts for Dropshot\_27:

(7, 18089), (10, 18128), (Start: 15 @18188 has 10 MA's), (Start: 24 @18230 has 44 MA's), (48, 18392), (50, 18398), (55, 18431),

Gene: EarickHC\_42 Start: 29607, Stop: 29900, Start Num: 24

Candidate Starts for EarickHC\_42:

(Start: 24 @29607 has 44 MA's), (42, 29700), (43, 29706), (48, 29766), (54, 29799), (55, 29805), (60, 29841), (62, 29850),

Gene: FireCastle\_26 Start: 20491, Stop: 20772, Start Num: 20

Candidate Starts for FireCastle\_26:

(Start: 20 @20491 has 32 MA's), (38, 20587), (40, 20596), (44, 20617), (48, 20671), (54, 20704), (62, 20758),

Gene: Fireman\_43 Start: 31207, Stop: 31476, Start Num: 20

Candidate Starts for Fireman\_43:

(1, 30856), (5, 31021), (Start: 20 @31207 has 32 MA's), (Start: 22 @31216 has 1 MA's), (40, 31309), (44, 31330), (50, 31390), (51, 31399), (54, 31417),

Gene: Fulton\_22 Start: 16484, Stop: 16741, Start Num: 20

Candidate Starts for Fulton\_22:

(Start: 20 @16484 has 32 MA's), (31, 16535), (40, 16589), (50, 16670), (51, 16679),

Gene: FuzzBuster\_48 Start: 30251, Stop: 30502, Start Num: 24

Candidate Starts for FuzzBuster\_48:

(16, 30215), (17, 30221), (Start: 24 @30251 has 44 MA's), (39, 30332), (47, 30410), (51, 30428),

Gene: Ganandorf\_41 Start: 29746, Stop: 30039, Start Num: 24

Candidate Starts for Ganandorf\_41:

(Start: 24 @29746 has 44 MA's), (42, 29839), (43, 29845), (48, 29905), (54, 29938), (55, 29944), (60, 29980), (62, 29989),

Gene: Germa\_43 Start: 29575, Stop: 29868, Start Num: 24

Candidate Starts for Germa\_43:

(Start: 24 @29575 has 44 MA's), (42, 29668), (43, 29674), (48, 29734), (54, 29767), (55, 29773), (60, 29809), (62, 29818),

Gene: Gingerbug\_25 Start: 18946, Stop: 19185, Start Num: 23

Candidate Starts for Gingerbug\_25:

(Start: 23 @18946 has 1 MA's), (27, 18958), (32, 18982), (43, 19048), (47, 19105), (50, 19114), (55, 19147), (58, 19177),

Gene: Glorp\_43 Start: 29747, Stop: 30040, Start Num: 24

Candidate Starts for Glorp\_43:

(Start: 24 @29747 has 44 MA's), (42, 29840), (43, 29846), (48, 29906), (54, 29939), (55, 29945), (60, 29981), (61, 29987), (62, 29990),

Gene: Goodman\_27 Start: 20336, Stop: 20614, Start Num: 20

Candidate Starts for Goodman\_27:

(12, 20282), (Start: 20 @20336 has 32 MA's), (33, 20393), (44, 20462), (48, 20516), (54, 20549),

Gene: Greenlvy\_22 Start: 17076, Stop: 17333, Start Num: 20

Candidate Starts for Greenlvy\_22:

(13, 17034), (Start: 20 @17076 has 32 MA's), (31, 17127), (40, 17181), (50, 17262), (51, 17271),

Gene: Guzman\_29 Start: 18639, Stop: 18899, Start Num: 24

Candidate Starts for Guzman\_29:

(7, 18498), (10, 18537), (Start: 15 @18597 has 10 MA's), (Start: 24 @18639 has 44 MA's), (48, 18801), (50, 18807), (55, 18840),

Gene: Hasitha\_22 Start: 16502, Stop: 16759, Start Num: 20

Candidate Starts for Hasitha\_22:

(Start: 20 @16502 has 32 MA's), (31, 16553), (40, 16607), (47, 16679), (51, 16697),

Gene: HerculesXL\_22 Start: 16593, Stop: 16850, Start Num: 19

Candidate Starts for HerculesXL\_22:

(3, 16365), (13, 16551), (Start: 19 @16593 has 7 MA's), (31, 16644), (51, 16788), (54, 16806), (58, 16842),

Gene: Hermeonysus\_41 Start: 29613, Stop: 29906, Start Num: 24

Candidate Starts for Hermeonysus\_41:

(Start: 24 @29613 has 44 MA's), (42, 29706), (43, 29712), (48, 29772), (54, 29805), (55, 29811), (60, 29847), (62, 29856),

Gene: Honeyfin\_43 Start: 29934, Stop: 30227, Start Num: 24

Candidate Starts for Honeyfin\_43:

(Start: 24 @29934 has 44 MA's), (42, 30027), (43, 30033), (48, 30093), (54, 30126), (55, 30132), (60, 30168), (62, 30177),

Gene: Htur\_26 Start: 20391, Stop: 20669, Start Num: 20

Candidate Starts for Htur\_26:

(12, 20337), (Start: 20 @20391 has 32 MA's), (44, 20517), (48, 20571),

Gene: IndiRoo\_26 Start: 18907, Stop: 19206, Start Num: 19

Candidate Starts for IndiRoo\_26:

(12, 18862), (Start: 19 @18907 has 7 MA's), (21, 18913), (40, 19015), (52, 19111),

Gene: Jakelyne\_30 Start: 18446, Stop: 18706, Start Num: 24

Candidate Starts for Jakelyne\_30:

(7, 18305), (10, 18344), (Start: 15 @18404 has 10 MA's), (Start: 24 @18446 has 44 MA's), (48, 18608), (50, 18614), (55, 18647),

Gene: Jayden\_43 Start: 30188, Stop: 30442, Start Num: 24

Candidate Starts for Jayden\_43:

(Start: 24 @30188 has 44 MA's), (28, 30200), (32, 30224), (37, 30263), (42, 30284), (44, 30296), (45, 30314), (50, 30356), (56, 30407),

Gene: Jefe\_42 Start: 29671, Stop: 29964, Start Num: 24

Candidate Starts for Jefe\_42:

(Start: 24 @29671 has 44 MA's), (42, 29764), (43, 29770), (48, 29830), (54, 29863), (55, 29869), (60, 29905), (61, 29911), (62, 29914),

Gene: Jera\_27 Start: 19448, Stop: 19726, Start Num: 20

Candidate Starts for Jera\_27:

(12, 19394), (Start: 20 @19448 has 32 MA's), (44, 19574), (48, 19628),

Gene: Johann\_27 Start: 20336, Stop: 20614, Start Num: 20

Candidate Starts for Johann\_27:

(12, 20282), (Start: 20 @20336 has 32 MA's), (33, 20393), (44, 20462), (48, 20516), (54, 20549),

Gene: Jollipop\_42 Start: 30010, Stop: 30303, Start Num: 24

Candidate Starts for Jollipop\_42:

(Start: 24 @30010 has 44 MA's), (42, 30103), (43, 30109), (48, 30169), (54, 30202), (55, 30208), (60, 30244), (62, 30253),

Gene: KaiHaiDragon\_42 Start: 29607, Stop: 29900, Start Num: 24

Candidate Starts for KaiHaiDragon\_42:

(Start: 24 @29607 has 44 MA's), (42, 29700), (43, 29706), (48, 29766), (54, 29799), (55, 29805), (60, 29841), (62, 29850),

Gene: Kavo\_21 Start: 16432, Stop: 16689, Start Num: 19

Candidate Starts for Kavo\_21:

(3, 16204), (13, 16390), (Start: 19 @16432 has 7 MA's), (31, 16483), (51, 16627), (54, 16645), (58, 16681),

Gene: Kowalski\_41 Start: 29720, Stop: 30013, Start Num: 24

Candidate Starts for Kowalski\_41:

(Start: 24 @29720 has 44 MA's), (42, 29813), (43, 29819), (48, 29879), (54, 29912), (55, 29918), (60, 29954), (62, 29963),

Gene: Kozie\_37 Start: 29192, Stop: 29446, Start Num: 24

Candidate Starts for Kozie\_37:

(Start: 24 @29192 has 44 MA's), (37, 29267), (43, 29294), (47, 29351), (48, 29354),

Gene: Labella\_28 Start: 20329, Stop: 20607, Start Num: 20

Candidate Starts for Labella\_28:

(12, 20275), (Start: 20 @20329 has 32 MA's), (44, 20455), (48, 20509),

Gene: Librie\_22 Start: 16502, Stop: 16759, Start Num: 20

Candidate Starts for Librie\_22:

(Start: 20 @16502 has 32 MA's), (31, 16553), (40, 16607), (50, 16688), (51, 16697),

Gene: LilTerminator\_22 Start: 16508, Stop: 16765, Start Num: 20

Candidate Starts for LilTerminator\_22:

(Start: 20 @16508 has 32 MA's), (31, 16559), (40, 16613), (50, 16694), (51, 16703),

Gene: Linayshia\_26 Start: 20383, Stop: 20661, Start Num: 20

Candidate Starts for Linayshia\_26:

(12, 20329), (Start: 20 @20383 has 32 MA's), (44, 20509), (48, 20563),

Gene: LittleFortune\_43 Start: 29976, Stop: 30269, Start Num: 24

Candidate Starts for LittleFortune\_43:

(Start: 24 @29976 has 44 MA's), (42, 30069), (43, 30075), (48, 30135), (54, 30168), (55, 30174), (60, 30210), (62, 30219),

Gene: Losacky\_29 Start: 18468, Stop: 18770, Start Num: 15

Candidate Starts for Losacky\_29:

(7, 18369), (10, 18408), (Start: 15 @18468 has 10 MA's), (Start: 24 @18510 has 44 MA's), (48, 18672), (50, 18678), (55, 18711),

Gene: Lucretia\_42 Start: 29663, Stop: 29956, Start Num: 24

Candidate Starts for Lucretia\_42:

(Start: 24 @29663 has 44 MA's), (42, 29756), (43, 29762), (48, 29822), (54, 29855), (55, 29861), (60, 29897), (62, 29906),

Gene: Mariel\_31 Start: 18760, Stop: 19062, Start Num: 15

Candidate Starts for Mariel\_31:

(7, 18661), (10, 18700), (Start: 15 @18760 has 10 MA's), (Start: 24 @18802 has 44 MA's), (48, 18964), (50, 18970), (55, 19003),

Gene: Megan\_36 Start: 30627, Stop: 30881, Start Num: 24

Candidate Starts for Megan\_36:

(18, 30600), (Start: 24 @30627 has 44 MA's), (28, 30639), (43, 30729), (47, 30786), (50, 30795), (56, 30846),

Gene: Mema\_1 Start: 96, Stop: 341, Start Num: 24

Candidate Starts for Mema\_1:

(Start: 24 @96 has 44 MA's), (32, 132), (37, 171), (40, 183),

Gene: MenE\_28 Start: 18498, Stop: 18758, Start Num: 24

Candidate Starts for MenE\_28:

(7, 18357), (10, 18396), (Start: 15 @18456 has 10 MA's), (Start: 24 @18498 has 44 MA's), (48, 18660), (50, 18666), (55, 18699),

Gene: Metamorphoo\_43 Start: 30469, Stop: 30738, Start Num: 20

Candidate Starts for Metamorphoo\_43:

(Start: 20 @30469 has 32 MA's), (Start: 22 @30478 has 1 MA's), (40, 30571), (44, 30592), (50, 30652), (51, 30661), (54, 30679),

Gene: Milani\_27 Start: 19537, Stop: 19821, Start Num: 19

Candidate Starts for Milani\_27:

(12, 19492), (Start: 19 @19537 has 7 MA's), (21, 19543), (Start: 24 @19558 has 44 MA's), (40, 19645), (48, 19720), (52, 19741), (62, 19807),

Gene: MisoSoup\_37 Start: 27536, Stop: 27790, Start Num: 24

Candidate Starts for MisoSoup\_37:

(Start: 24 @27536 has 44 MA's), (42, 27635), (48, 27701), (50, 27707), (54, 27734),

Gene: NCRodriguez\_29 Start: 18550, Stop: 18807, Start Num: 24

Candidate Starts for NCRodriguez\_29:

(7, 18409), (10, 18448), (Start: 15 @18508 has 10 MA's), (Start: 24 @18550 has 44 MA's), (48, 18712), (50, 18718), (55, 18751),

Gene: NoodlelyBoi\_42 Start: 30039, Stop: 30326, Start Num: 24

Candidate Starts for NoodlelyBoi\_42:

(Start: 24 @30039 has 44 MA's), (42, 30132), (43, 30138), (44, 30144), (47, 30195), (50, 30204), (54, 30231), (55, 30237), (60, 30273), (62, 30282),

Gene: Olympi\_28 Start: 20323, Stop: 20601, Start Num: 20

Candidate Starts for Olympi\_28:

(12, 20269), (Start: 20 @20323 has 32 MA's), (33, 20380), (44, 20449), (48, 20503), (54, 20536),

Gene: Onika\_41 Start: 29695, Stop: 29988, Start Num: 24

Candidate Starts for Onika\_41:

(Start: 24 @29695 has 44 MA's), (42, 29788), (43, 29794), (48, 29854), (54, 29887), (55, 29893), (60, 29929), (62, 29938),

Gene: Paschalis\_41 Start: 29702, Stop: 29995, Start Num: 24

Candidate Starts for Paschalis\_41:

(Start: 24 @29702 has 44 MA's), (42, 29795), (43, 29801), (48, 29861), (54, 29894), (55, 29900), (60, 29936), (62, 29945),

Gene: Penta\_21 Start: 16428, Stop: 16685, Start Num: 20

Candidate Starts for Penta\_21:

(8, 16317), (9, 16332), (Start: 20 @16428 has 32 MA's), (31, 16479), (48, 16608), (51, 16623), (54, 16641), (58, 16677),

Gene: PermaG\_27 Start: 20401, Stop: 20679, Start Num: 20

Candidate Starts for PermaG\_27:

(12, 20347), (Start: 20 @20401 has 32 MA's), (40, 20506), (44, 20527), (48, 20581), (54, 20614),

Gene: PhedwardCullen\_41 Start: 29453, Stop: 29746, Start Num: 24

Candidate Starts for PhedwardCullen\_41:

(Start: 24 @29453 has 44 MA's), (42, 29546), (43, 29552), (48, 29612), (54, 29645), (55, 29651), (60, 29687), (62, 29696),

Gene: PhillyJawn\_28 Start: 18188, Stop: 18490, Start Num: 15

Candidate Starts for PhillyJawn\_28:

(7, 18089), (10, 18128), (Start: 15 @18188 has 10 MA's), (Start: 24 @18230 has 44 MA's), (48, 18392), (50, 18398), (55, 18431),

Gene: Phingu\_30 Start: 18446, Stop: 18703, Start Num: 24

Candidate Starts for Phingu\_30:

(7, 18305), (10, 18344), (Start: 15 @18404 has 10 MA's), (Start: 24 @18446 has 44 MA's), (48, 18608), (50, 18614), (55, 18647),

Gene: Phonegingi\_27 Start: 18231, Stop: 18533, Start Num: 15

Candidate Starts for Phonegingi\_27:

(7, 18132), (10, 18171), (Start: 15 @18231 has 10 MA's), (Start: 24 @18273 has 44 MA's), (48, 18435), (50, 18441), (55, 18474),

Gene: Phorgeous\_41 Start: 29565, Stop: 29858, Start Num: 24

Candidate Starts for Phorgeous\_41:

(Start: 24 @29565 has 44 MA's), (42, 29658), (43, 29664), (48, 29724), (54, 29757), (55, 29763), (60, 29799), (62, 29808),

Gene: Phrancesco\_42 Start: 29846, Stop: 30148, Start Num: 24

Candidate Starts for Phrancesco\_42:

(Start: 24 @29846 has 44 MA's), (42, 29939), (48, 30005), (54, 30038), (55, 30044), (60, 30080), (62, 30089),

Gene: Pickles13\_27 Start: 18619, Stop: 18918, Start Num: 15

Candidate Starts for Pickles13\_27:

(7, 18520), (10, 18559), (Start: 15 @18619 has 10 MA's), (Start: 24 @18661 has 44 MA's), (48, 18823), (50, 18829),

Gene: PierreOrion\_42 Start: 29869, Stop: 30162, Start Num: 24

Candidate Starts for PierreOrion\_42:

(Start: 24 @29869 has 44 MA's), (42, 29962), (43, 29968), (48, 30028), (54, 30061), (55, 30067), (60, 30103), (62, 30112),

Gene: PiperSansNom\_42 Start: 30009, Stop: 30302, Start Num: 24

Candidate Starts for PiperSansNom\_42:

(Start: 24 @30009 has 44 MA's), (42, 30102), (43, 30108), (48, 30168), (54, 30201), (55, 30207), (60, 30243), (62, 30252),

Gene: Piperis\_42 Start: 29688, Stop: 29981, Start Num: 24

Candidate Starts for Piperis\_42:

(Start: 24 @29688 has 44 MA's), (42, 29781), (43, 29787), (48, 29847), (54, 29880), (55, 29886), (60, 29922), (62, 29931),

Gene: Pulchra\_43 Start: 30085, Stop: 30378, Start Num: 24

Candidate Starts for Pulchra\_43:

(Start: 24 @30085 has 44 MA's), (42, 30178), (43, 30184), (48, 30244), (54, 30277), (55, 30283), (60, 30319), (62, 30328),

Gene: QuadZero\_22 Start: 16512, Stop: 16769, Start Num: 20

Candidate Starts for QuadZero\_22:

(2, 16263), (8, 16404), (9, 16419), (Start: 20 @16512 has 32 MA's), (31, 16563), (40, 16617), (50, 16698), (51, 16707),

Gene: Quhwah\_45 Start: 30317, Stop: 30610, Start Num: 24

Candidate Starts for Quhwah\_45:

(Start: 24 @30317 has 44 MA's), (42, 30410), (43, 30416), (48, 30476), (54, 30509), (55, 30515), (60, 30551), (62, 30560),

Gene: Ramiel05\_41 Start: 29720, Stop: 30013, Start Num: 24

Candidate Starts for Ramiel05\_41:

(Start: 24 @29720 has 44 MA's), (42, 29813), (43, 29819), (48, 29879), (54, 29912), (55, 29918), (60, 29954), (62, 29963),

Gene: Rasovi\_26 Start: 20391, Stop: 20669, Start Num: 20

Candidate Starts for Rasovi\_26:

(12, 20337), (Start: 20 @20391 has 32 MA's), (44, 20517), (48, 20571),

Gene: RobsFeet\_44 Start: 30750, Stop: 31019, Start Num: 20

Candidate Starts for RobsFeet\_44:

(Start: 20 @30750 has 32 MA's), (Start: 22 @30759 has 1 MA's), (40, 30852), (44, 30873), (50, 30933), (51, 30942), (54, 30960),

Gene: Rockwell\_41 Start: 29720, Stop: 30013, Start Num: 24

Candidate Starts for Rockwell\_41:

(Start: 24 @29720 has 44 MA's), (42, 29813), (43, 29819), (48, 29879), (54, 29912), (55, 29918), (60, 29954), (62, 29963),

Gene: Rootkit7\_26 Start: 20201, Stop: 20479, Start Num: 20

Candidate Starts for Rootkit7\_26:

(12, 20147), (Start: 20 @20201 has 32 MA's), (44, 20327), (48, 20381),

Gene: SBlackberry\_26 Start: 20201, Stop: 20479, Start Num: 20

Candidate Starts for SBlackberry\_26:

(12, 20147), (Start: 20 @20201 has 32 MA's), (33, 20258), (44, 20327), (48, 20381), (50, 20387), (54, 20414),

Gene: Savannah\_41 Start: 29747, Stop: 30040, Start Num: 24

Candidate Starts for Savannah\_41:

(Start: 24 @29747 has 44 MA's), (42, 29840), (43, 29846), (48, 29906), (54, 29939), (55, 29945), (60, 29981), (62, 29990),

Gene: Schimmels22\_22 Start: 16956, Stop: 17213, Start Num: 19

Candidate Starts for Schimmels22\_22:

(13, 16914), (Start: 19 @16956 has 7 MA's), (31, 17007), (51, 17151), (54, 17169), (58, 17205),

Gene: Scissor2024\_22 Start: 16592, Stop: 16849, Start Num: 20

Candidate Starts for Scissor2024\_22:

(4, 16391), (8, 16481), (9, 16496), (Start: 20 @16592 has 32 MA's), (31, 16643), (58, 16841),

Gene: ScoobySnack\_26 Start: 18360, Stop: 18623, Start Num: 24

Candidate Starts for ScoobySnack\_26:

(Start: 24 @18360 has 44 MA's), (48, 18522), (50, 18528), (53, 18549),

Gene: Scumberland\_43 Start: 29942, Stop: 30235, Start Num: 24

Candidate Starts for Scumberland\_43:

(Start: 24 @29942 has 44 MA's), (42, 30035), (43, 30041), (48, 30101), (54, 30134), (55, 30140), (60, 30176), (62, 30185),

Gene: Selwyn23\_43 Start: 29919, Stop: 30212, Start Num: 24

Candidate Starts for Selwyn23\_43:

(Start: 24 @29919 has 44 MA's), (42, 30012), (43, 30018), (48, 30078), (54, 30111), (55, 30117), (60, 30153), (61, 30159), (62, 30162),

Gene: Shotgun\_41 Start: 29546, Stop: 29839, Start Num: 24

Candidate Starts for Shotgun\_41:

(Start: 24 @29546 has 44 MA's), (42, 29639), (43, 29645), (48, 29705), (54, 29738), (55, 29744), (60, 29780), (62, 29789),

Gene: Shrubaron\_43 Start: 30384, Stop: 30653, Start Num: 20

Candidate Starts for Shrubaron\_43:

(Start: 20 @30384 has 32 MA's), (Start: 22 @30393 has 1 MA's), (40, 30486), (44, 30507), (50, 30567), (51, 30576),

Gene: SirFrank\_41 Start: 29594, Stop: 29881, Start Num: 24

Candidate Starts for SirFrank\_41:

(Start: 24 @29594 has 44 MA's), (42, 29687), (43, 29693), (44, 29699), (47, 29750), (50, 29759), (54, 29786), (55, 29792), (60, 29828), (62, 29837),

Gene: Sucha\_23 Start: 17894, Stop: 18178, Start Num: 19

Candidate Starts for Sucha\_23:

(Start: 19 @17894 has 7 MA's), (Start: 24 @17915 has 44 MA's), (34, 17957), (40, 18002), (48, 18077), (52, 18098), (54, 18110), (62, 18164),

Gene: Sweetums\_29 Start: 18906, Stop: 19136, Start Num: 25

Candidate Starts for Sweetums\_29:

(Start: 24 @18903 has 44 MA's), (Start: 25 @18906 has 1 MA's), (35, 18951), (43, 19002), (45, 19026), (47, 19059), (56, 19119),

Gene: Tinyman4\_22 Start: 16593, Stop: 16850, Start Num: 19

Candidate Starts for Tinyman4\_22:

(3, 16365), (13, 16551), (Start: 19 @16593 has 7 MA's), (31, 16644), (51, 16788), (54, 16806), (58, 16842),

Gene: TurboVicky\_26 Start: 20200, Stop: 20478, Start Num: 20

Candidate Starts for TurboVicky\_26:

(12, 20146), (Start: 20 @20200 has 32 MA's), (44, 20326), (48, 20380),

Gene: TwoBits\_22 Start: 16890, Stop: 17147, Start Num: 20

Candidate Starts for TwoBits\_22:

(Start: 20 @16890 has 32 MA's), (31, 16941), (48, 17070), (51, 17085), (54, 17103), (58, 17139),

Gene: Typher\_28 Start: 20329, Stop: 20607, Start Num: 20

Candidate Starts for Typher\_28:

(12, 20275), (Start: 20 @20329 has 32 MA's), (44, 20455), (48, 20509),

Gene: Tyrumbra\_41 Start: 30550, Stop: 30819, Start Num: 20

Candidate Starts for Tyrumbra\_41:

(5, 30364), (Start: 20 @30550 has 32 MA's), (Start: 22 @30559 has 1 MA's), (40, 30652), (44, 30673), (50, 30733), (51, 30742), (54, 30760),

Gene: Violeta\_29 Start: 18328, Stop: 18588, Start Num: 24

Candidate Starts for Violeta\_29:

(7, 18187), (10, 18226), (Start: 15 @18286 has 10 MA's), (Start: 24 @18328 has 44 MA's), (48, 18490), (50, 18496), (55, 18529),

Gene: Wardwill\_24 Start: 16670, Stop: 16927, Start Num: 20

Candidate Starts for Wardwill\_24:

(Start: 20 @16670 has 32 MA's), (31, 16721), (40, 16775), (50, 16856), (51, 16865),

Gene: Warren\_28 Start: 18392, Stop: 18691, Start Num: 15

Candidate Starts for Warren\_28:

(7, 18293), (10, 18332), (Start: 15 @18392 has 10 MA's), (Start: 24 @18434 has 44 MA's), (48, 18596), (50, 18602), (55, 18635),

Gene: WestPM\_21 Start: 16437, Stop: 16694, Start Num: 20

Candidate Starts for WestPM\_21:

(8, 16326), (9, 16341), (Start: 20 @16437 has 32 MA's), (31, 16488), (48, 16617), (51, 16632), (54, 16650), (58, 16686),

Gene: WilliamStrong\_21 Start: 18148, Stop: 18399, Start Num: 22

Candidate Starts for WilliamStrong\_21:

(Start: 22 @18148 has 1 MA's), (26, 18163), (29, 18184), (49, 18322), (59, 18388),

Gene: Winchester007\_43 Start: 24348, Stop: 24608, Start Num: 24

Candidate Starts for Winchester007\_43:

(7, 24207), (10, 24246), (Start: 15 @24306 has 10 MA's), (Start: 24 @24348 has 44 MA's), (48, 24510), (50, 24516), (55, 24549),

Gene: Wrackline\_33 Start: 20157, Stop: 20396, Start Num: 24

Candidate Starts for Wrackline\_33:

(Start: 24 @20157 has 44 MA's), (37, 20229), (41, 20244), (45, 20280), (50, 20322), (57, 20382),

Gene: Yeti\_42 Start: 29721, Stop: 30014, Start Num: 24

Candidate Starts for Yeti\_42:

(Start: 24 @29721 has 44 MA's), (42, 29814), (43, 29820), (48, 29880), (54, 29913), (55, 29919), (60, 29955), (61, 29961), (62, 29964),

Gene: Zanella\_26 Start: 20203, Stop: 20481, Start Num: 20

Candidate Starts for Zanella\_26:

(12, 20149), (Start: 20 @20203 has 32 MA's), (44, 20329), (48, 20383),

Gene: Zapato\_41 Start: 30018, Stop: 30260, Start Num: 28

Candidate Starts for Zapato\_41:

(Start: 24 @30006 has 44 MA's), (28, 30018), (37, 30081), (42, 30102), (44, 30114), (45, 30132), (48, 30168), (56, 30225),

Gene: Zayuliv\_22 Start: 17098, Stop: 17355, Start Num: 20

Candidate Starts for Zayuliv\_22:

(13, 17056), (Start: 20 @17098 has 32 MA's), (31, 17149), (40, 17203), (50, 17284), (51, 17293),

Gene: Zepp\_23 Start: 16496, Stop: 16753, Start Num: 20

Candidate Starts for Zepp\_23:

(2, 16247), (6, 16343), (8, 16388), (9, 16403), (Start: 20 @16496 has 32 MA's), (31, 16547), (40, 16601), (50, 16682), (51, 16691),