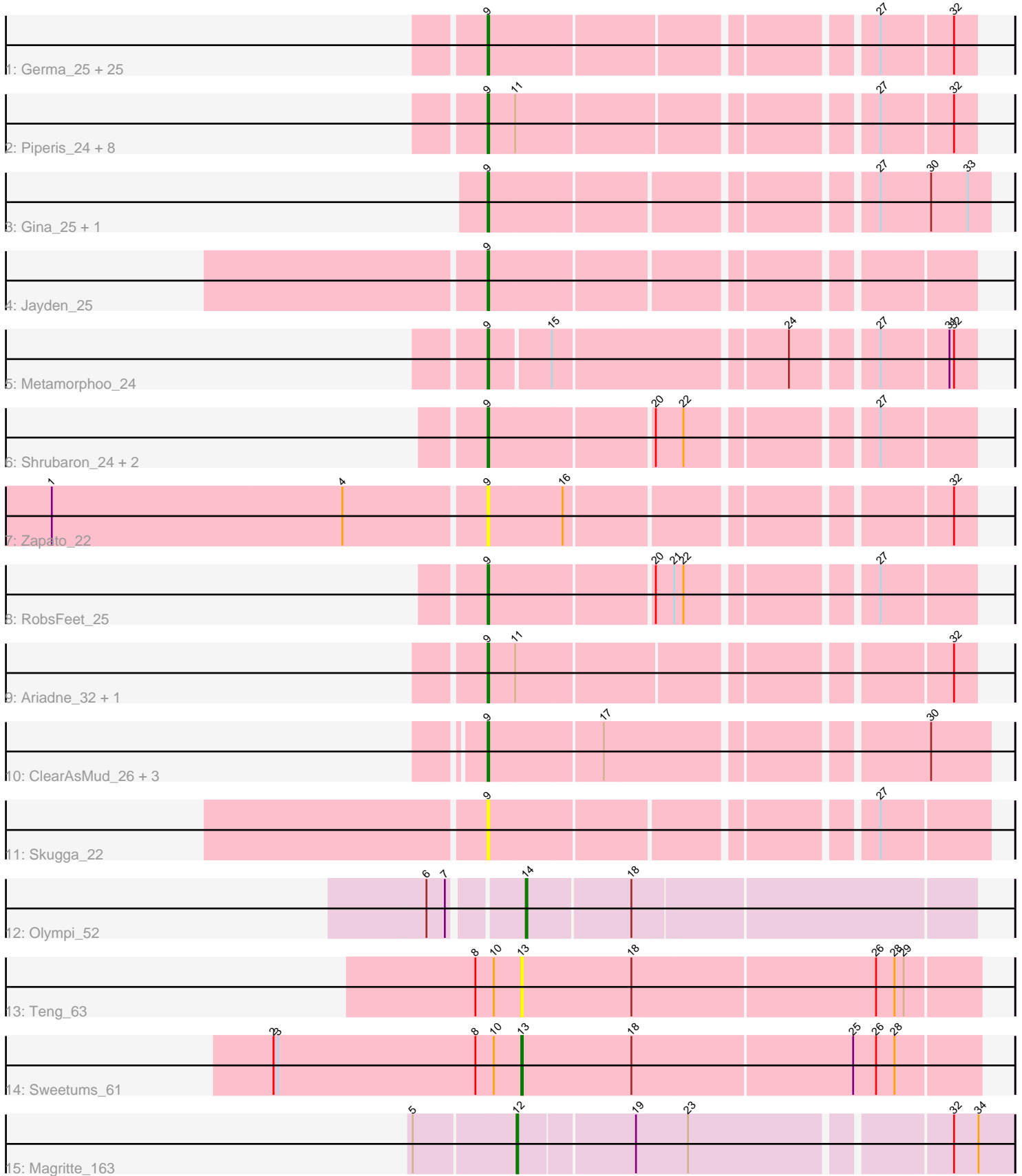


Pham 303412



Note: Tracks are now grouped by subcluster and scaled. Switching in subcluster is indicated by changes in track color. Track scale is now set by default to display the region 30 bp upstream of start 1 to 30 bp downstream of the last possible start. If this default region is judged to be packed too tightly with annotated starts, the track will be further scaled to only show that region of the ORF with annotated starts. This action will be indicated by adding "Zoomed" to the title. For starts, yellow indicates the location of called starts comprised solely of Glimmer/GeneMark auto-annotations, green indicates the location of called starts with at least 1 manual gene annotation.

Pham 303412 Report

This analysis was run 06/08/26 on database version 649.

Pham number 303412 has 55 members, 8 are drafts.

Phages represented in each track:

- Track 1 : Germa_25, PhedwardCullen_23, Ganandorf_23, Shotgun_23, Hermeonysus_23, Rockwell_23, CrazyRich_23, BeagleBug_23, Busephilis_23, Jefe_24, Savannah_23, BrazzalePHS_23, Lucretia_24, KaiHaiDragon_24, Crisis_25, Onika_23, Selwyn23_25, Pulchra_25, EarickHC_24, Cranjis_25, Ramiel05_23, Honeyfin_25, Kowalski_23, Jollipop_24, PiperSansNom_24, Scumberland_25
- Track 2 : Piperis_24, Paschalis_23, PierreOrion_24, Phorgeous_23, LittleFortune_25, Glorp_25, Yeti_24, Antares_24, Phrancesco_24
- Track 3 : Gina_25, Teamocil_25
- Track 4 : Jayden_25
- Track 5 : Metamorphoo_24
- Track 6 : Shrubaron_24, Fireman_24, Tyrumbra_22
- Track 7 : Zapato_22
- Track 8 : RobsFeet_25
- Track 9 : Ariadne_32, Smarties_32
- Track 10 : ClearAsMud_26, SirFrank_23, NoodlelyBoi_23, Quhwah_26
- Track 11 : Skugga_22
- Track 12 : Olympi_52
- Track 13 : Teng_63
- Track 14 : Sweetums_61
- Track 15 : Magritte_163

Summary of Final Annotations (See graph section above for start numbers):

The start number called the most often in the published annotations is 9, it was called in 44 of the 47 non-draft genes in the pham.

Genes that call this "Most Annotated" start:

- Antares_24, Ariadne_32, BeagleBug_23, BrazzalePHS_23, Busephilis_23, ClearAsMud_26, Cranjis_25, CrazyRich_23, Crisis_25, EarickHC_24, Fireman_24, Ganandorf_23, Germa_25, Gina_25, Glorp_25, Hermeonysus_23, Honeyfin_25, Jayden_25, Jefe_24, Jollipop_24, KaiHaiDragon_24, Kowalski_23, LittleFortune_25, Lucretia_24, Metamorphoo_24, NoodlelyBoi_23, Onika_23, Paschalis_23, PhedwardCullen_23, Phorgeous_23, Phrancesco_24, PierreOrion_24, PiperSansNom_24, Piperis_24, Pulchra_25, Quhwah_26, Ramiel05_23,

RobsFeet_25, Rockwell_23, Savannah_23, Scumberland_25, Selwyn23_25, Shotgun_23, Shrubaron_24, SirFrank_23, Skugga_22, Smarties_32, Teamocil_25, Tyrumbra_22, Yeti_24, Zapato_22,

Genes that have the "Most Annotated" start but do not call it:

-

Genes that do not have the "Most Annotated" start:

- Magritte_163, Olympi_52, Sweetums_61, Teng_63,

Summary by start number:

Start 9:

- Found in 51 of 55 (92.7%) of genes in pham
- Manual Annotations of this start: 44 of 47
- Called 100.0% of time when present
- Phage (with cluster) where this start called: Antares_24 (EC), Ariadne_32 (EC), BeagleBug_23 (EC), BrazzalePHS_23 (EC), Busephilis_23 (EC), ClearAsMud_26 (EC), Cranjjs_25 (EC), CrazyRich_23 (EC), Crisis_25 (EC), EarickHC_24 (EC), Fireman_24 (EC), Ganandorf_23 (EC), Germa_25 (EC), Gina_25 (EC), Glorp_25 (EC), Hermeonysus_23 (EC), Honeyfin_25 (EC), Jayden_25 (EC), Jefe_24 (EC), Jollipop_24 (EC), KaiHaiDragon_24 (EC), Kowalski_23 (EC), LittleFortune_25 (EC), Lucretia_24 (EC), Metamorphoo_24 (EC), NoodlelyBoi_23 (EC), Onika_23 (EC), Paschalis_23 (EC), PhedwardCullen_23 (EC), Phorgeous_23 (EC), Phrancesco_24 (EC), PierreOrion_24 (EC), PiperSansNom_24 (EC), Piperis_24 (EC), Pulchra_25 (EC), Quhwah_26 (EC), Ramiel05_23 (EC), RobsFeet_25 (EC), Rockwell_23 (EC), Savannah_23 (EC), Scumberland_25 (EC), Selwyn23_25 (EC), Shotgun_23 (EC), Shrubaron_24 (EC), SirFrank_23 (EC), Skugga_22 (EC), Smarties_32 (EC), Teamocil_25 (EC), Tyrumbra_22 (EC), Yeti_24 (EC), Zapato_22 (EC),

Start 12:

- Found in 1 of 55 (1.8%) of genes in pham
- Manual Annotations of this start: 1 of 47
- Called 100.0% of time when present
- Phage (with cluster) where this start called: Magritte_163 (singleton),

Start 13:

- Found in 2 of 55 (3.6%) of genes in pham
- Manual Annotations of this start: 1 of 47
- Called 100.0% of time when present
- Phage (with cluster) where this start called: Sweetums_61 (GF), Teng_63 (GF),

Start 14:

- Found in 1 of 55 (1.8%) of genes in pham
- Manual Annotations of this start: 1 of 47
- Called 100.0% of time when present
- Phage (with cluster) where this start called: Olympi_52 (EJ),

Summary by clusters:

There are 4 clusters represented in this pham: GF, singleton, EC, EJ,

Info for manual annotations of cluster EC:

- Start number 9 was manually annotated 44 times for cluster EC.

Info for manual annotations of cluster EJ:

- Start number 14 was manually annotated 1 time for cluster EJ.

Info for manual annotations of cluster GF:

- Start number 13 was manually annotated 1 time for cluster GF.

Gene Information:

Gene: Antares_24 Start: 11753, Stop: 12037, Start Num: 9

Candidate Starts for Antares_24:

(Start: 9 @11753 has 44 MA's), (11, 11768), (27, 11978), (32, 12023),

Gene: Ariadne_32 Start: 13221, Stop: 13505, Start Num: 9

Candidate Starts for Ariadne_32:

(Start: 9 @13221 has 44 MA's), (11, 13236), (32, 13491),

Gene: BeagleBug_23 Start: 11531, Stop: 11815, Start Num: 9

Candidate Starts for BeagleBug_23:

(Start: 9 @11531 has 44 MA's), (27, 11756), (32, 11801),

Gene: BrazzalePHS_23 Start: 11545, Stop: 11829, Start Num: 9

Candidate Starts for BrazzalePHS_23:

(Start: 9 @11545 has 44 MA's), (27, 11770), (32, 11815),

Gene: Busephilis_23 Start: 11484, Stop: 11768, Start Num: 9

Candidate Starts for Busephilis_23:

(Start: 9 @11484 has 44 MA's), (27, 11709), (32, 11754),

Gene: ClearAsMud_26 Start: 12264, Stop: 12563, Start Num: 9

Candidate Starts for ClearAsMud_26:

(Start: 9 @12264 has 44 MA's), (17, 12333), (30, 12525),

Gene: Cranjis_25 Start: 11708, Stop: 11992, Start Num: 9

Candidate Starts for Cranjis_25:

(Start: 9 @11708 has 44 MA's), (27, 11933), (32, 11978),

Gene: CrazyRich_23 Start: 11518, Stop: 11802, Start Num: 9

Candidate Starts for CrazyRich_23:

(Start: 9 @11518 has 44 MA's), (27, 11743), (32, 11788),

Gene: Crisis_25 Start: 11502, Stop: 11786, Start Num: 9

Candidate Starts for Crisis_25:

(Start: 9 @11502 has 44 MA's), (27, 11727), (32, 11772),

Gene: EarickHC_24 Start: 11429, Stop: 11713, Start Num: 9

Candidate Starts for EarickHC_24:

(Start: 9 @11429 has 44 MA's), (27, 11654), (32, 11699),

Gene: Fireman_24 Start: 11156, Stop: 11440, Start Num: 9

Candidate Starts for Fireman_24:
(Start: 9 @11156 has 44 MA's), (20, 11255), (22, 11273), (27, 11381),

Gene: Ganandorf_23 Start: 11565, Stop: 11849, Start Num: 9
Candidate Starts for Ganandorf_23:
(Start: 9 @11565 has 44 MA's), (27, 11790), (32, 11835),

Gene: Germa_25 Start: 11394, Stop: 11678, Start Num: 9
Candidate Starts for Germa_25:
(Start: 9 @11394 has 44 MA's), (27, 11619), (32, 11664),

Gene: Gina_25 Start: 10836, Stop: 11132, Start Num: 9
Candidate Starts for Gina_25:
(Start: 9 @10836 has 44 MA's), (27, 11061), (30, 11094), (33, 11118),

Gene: Glorp_25 Start: 11567, Stop: 11851, Start Num: 9
Candidate Starts for Glorp_25:
(Start: 9 @11567 has 44 MA's), (11, 11582), (27, 11792), (32, 11837),

Gene: Hermeonysus_23 Start: 11435, Stop: 11719, Start Num: 9
Candidate Starts for Hermeonysus_23:
(Start: 9 @11435 has 44 MA's), (27, 11660), (32, 11705),

Gene: Honeyfin_25 Start: 11750, Stop: 12034, Start Num: 9
Candidate Starts for Honeyfin_25:
(Start: 9 @11750 has 44 MA's), (27, 11975), (32, 12020),

Gene: Jayden_25 Start: 11220, Stop: 11504, Start Num: 9
Candidate Starts for Jayden_25:
(Start: 9 @11220 has 44 MA's),

Gene: Jefe_24 Start: 11488, Stop: 11772, Start Num: 9
Candidate Starts for Jefe_24:
(Start: 9 @11488 has 44 MA's), (27, 11713), (32, 11758),

Gene: Jollipop_24 Start: 11836, Stop: 12120, Start Num: 9
Candidate Starts for Jollipop_24:
(Start: 9 @11836 has 44 MA's), (27, 12061), (32, 12106),

Gene: KaiHaiDragon_24 Start: 11429, Stop: 11713, Start Num: 9
Candidate Starts for KaiHaiDragon_24:
(Start: 9 @11429 has 44 MA's), (27, 11654), (32, 11699),

Gene: Kowalski_23 Start: 11545, Stop: 11829, Start Num: 9
Candidate Starts for Kowalski_23:
(Start: 9 @11545 has 44 MA's), (27, 11770), (32, 11815),

Gene: LittleFortune_25 Start: 11792, Stop: 12076, Start Num: 9
Candidate Starts for LittleFortune_25:
(Start: 9 @11792 has 44 MA's), (11, 11807), (27, 12017), (32, 12062),

Gene: Lucretia_24 Start: 11482, Stop: 11766, Start Num: 9
Candidate Starts for Lucretia_24:

(Start: 9 @11482 has 44 MA's), (27, 11707), (32, 11752),

Gene: Magritte_163 Start: 97376, Stop: 97678, Start Num: 12

Candidate Starts for Magritte_163:

(5, 97313), (Start: 12 @97376 has 1 MA's), (19, 97448), (23, 97481), (32, 97640), (34, 97655),

Gene: Metamorphoo_24 Start: 11145, Stop: 11429, Start Num: 9

Candidate Starts for Metamorphoo_24:

(Start: 9 @11145 has 44 MA's), (15, 11181), (24, 11322), (27, 11370), (31, 11412), (32, 11415),

Gene: NoodlelyBoi_23 Start: 11571, Stop: 11870, Start Num: 9

Candidate Starts for NoodlelyBoi_23:

(Start: 9 @11571 has 44 MA's), (17, 11640), (30, 11832),

Gene: Olympi_52 Start: 34869, Stop: 34588, Start Num: 14

Candidate Starts for Olympi_52:

(6, 34923), (7, 34911), (Start: 14 @34869 has 1 MA's), (18, 34803),

Gene: Onika_23 Start: 11518, Stop: 11802, Start Num: 9

Candidate Starts for Onika_23:

(Start: 9 @11518 has 44 MA's), (27, 11743), (32, 11788),

Gene: Paschalis_23 Start: 11534, Stop: 11818, Start Num: 9

Candidate Starts for Paschalis_23:

(Start: 9 @11534 has 44 MA's), (11, 11549), (27, 11759), (32, 11804),

Gene: PhedwardCullen_23 Start: 11278, Stop: 11562, Start Num: 9

Candidate Starts for PhedwardCullen_23:

(Start: 9 @11278 has 44 MA's), (27, 11503), (32, 11548),

Gene: Phorgeous_23 Start: 11386, Stop: 11670, Start Num: 9

Candidate Starts for Phorgeous_23:

(Start: 9 @11386 has 44 MA's), (11, 11401), (27, 11611), (32, 11656),

Gene: Phrancesco_24 Start: 11665, Stop: 11949, Start Num: 9

Candidate Starts for Phrancesco_24:

(Start: 9 @11665 has 44 MA's), (11, 11680), (27, 11890), (32, 11935),

Gene: PierreOrion_24 Start: 11689, Stop: 11973, Start Num: 9

Candidate Starts for PierreOrion_24:

(Start: 9 @11689 has 44 MA's), (11, 11704), (27, 11914), (32, 11959),

Gene: PiperSansNom_24 Start: 11838, Stop: 12122, Start Num: 9

Candidate Starts for PiperSansNom_24:

(Start: 9 @11838 has 44 MA's), (27, 12063), (32, 12108),

Gene: Piperis_24 Start: 11511, Stop: 11795, Start Num: 9

Candidate Starts for Piperis_24:

(Start: 9 @11511 has 44 MA's), (11, 11526), (27, 11736), (32, 11781),

Gene: Pulchra_25 Start: 11910, Stop: 12194, Start Num: 9

Candidate Starts for Pulchra_25:

(Start: 9 @11910 has 44 MA's), (27, 12135), (32, 12180),

Gene: Quhwah_26 Start: 11886, Stop: 12185, Start Num: 9
Candidate Starts for Quhwah_26:
(Start: 9 @11886 has 44 MA's), (17, 11955), (30, 12147),

Gene: Ramiel05_23 Start: 11545, Stop: 11829, Start Num: 9
Candidate Starts for Ramiel05_23:
(Start: 9 @11545 has 44 MA's), (27, 11770), (32, 11815),

Gene: RobsFeet_25 Start: 11423, Stop: 11707, Start Num: 9
Candidate Starts for RobsFeet_25:
(Start: 9 @11423 has 44 MA's), (20, 11522), (21, 11534), (22, 11540), (27, 11648),

Gene: Rockwell_23 Start: 11545, Stop: 11829, Start Num: 9
Candidate Starts for Rockwell_23:
(Start: 9 @11545 has 44 MA's), (27, 11770), (32, 11815),

Gene: Savannah_23 Start: 11569, Stop: 11853, Start Num: 9
Candidate Starts for Savannah_23:
(Start: 9 @11569 has 44 MA's), (27, 11794), (32, 11839),

Gene: Scumberland_25 Start: 11759, Stop: 12043, Start Num: 9
Candidate Starts for Scumberland_25:
(Start: 9 @11759 has 44 MA's), (27, 11984), (32, 12029),

Gene: Selwyn23_25 Start: 11738, Stop: 12022, Start Num: 9
Candidate Starts for Selwyn23_25:
(Start: 9 @11738 has 44 MA's), (27, 11963), (32, 12008),

Gene: Shotgun_23 Start: 11367, Stop: 11651, Start Num: 9
Candidate Starts for Shotgun_23:
(Start: 9 @11367 has 44 MA's), (27, 11592), (32, 11637),

Gene: Shrubaron_24 Start: 11058, Stop: 11342, Start Num: 9
Candidate Starts for Shrubaron_24:
(Start: 9 @11058 has 44 MA's), (20, 11157), (22, 11175), (27, 11283),

Gene: SirFrank_23 Start: 11421, Stop: 11720, Start Num: 9
Candidate Starts for SirFrank_23:
(Start: 9 @11421 has 44 MA's), (17, 11490), (30, 11682),

Gene: Skugga_22 Start: 10672, Stop: 10965, Start Num: 9
Candidate Starts for Skugga_22:
(Start: 9 @10672 has 44 MA's), (27, 10897),

Gene: Smarties_32 Start: 13221, Stop: 13505, Start Num: 9
Candidate Starts for Smarties_32:
(Start: 9 @13221 has 44 MA's), (11, 13236), (32, 13491),

Gene: Sweetums_61 Start: 33831, Stop: 34124, Start Num: 13
Candidate Starts for Sweetums_61:
(2, 33669), (3, 33672), (8, 33801), (10, 33813), (Start: 13 @33831 has 1 MA's), (18, 33903), (25, 34044), (26, 34059), (28, 34071),

Gene: Teamocil_25 Start: 10836, Stop: 11132, Start Num: 9
Candidate Starts for Teamocil_25:
(Start: 9 @10836 has 44 MA's), (27, 11061), (30, 11094), (33, 11118),

Gene: Teng_63 Start: 33735, Stop: 34028, Start Num: 13
Candidate Starts for Teng_63:
(8, 33705), (10, 33717), (Start: 13 @33735 has 1 MA's), (18, 33807), (26, 33963), (28, 33975), (29, 33981),

Gene: Tyumbra_22 Start: 10499, Stop: 10783, Start Num: 9
Candidate Starts for Tyumbra_22:
(Start: 9 @10499 has 44 MA's), (20, 10598), (22, 10616), (27, 10724),

Gene: Yeti_24 Start: 11541, Stop: 11825, Start Num: 9
Candidate Starts for Yeti_24:
(Start: 9 @11541 has 44 MA's), (11, 11556), (27, 11766), (32, 11811),

Gene: Zapato_22 Start: 10866, Stop: 11150, Start Num: 9
Candidate Starts for Zapato_22:
(1, 10587), (4, 10776), (Start: 9 @10866 has 44 MA's), (16, 10911), (32, 11136),