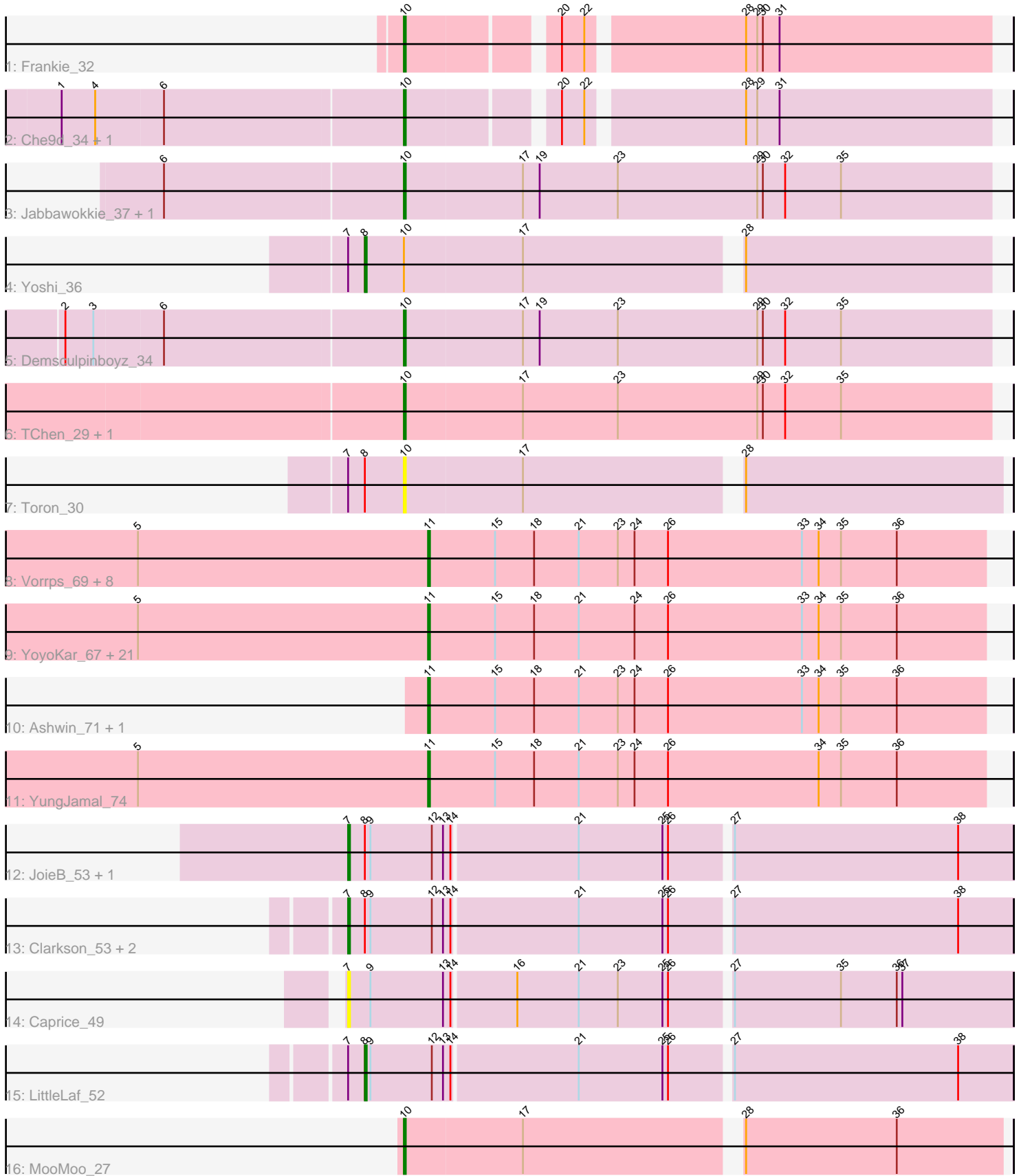


Pham 303429



Note: Tracks are now grouped by subcluster and scaled. Switching in subcluster is indicated by changes in track color. Track scale is now set by default to display the region 30 bp upstream of start 1 to 30 bp downstream of the last possible start. If this default region is judged to be packed too tightly with annotated starts, the track will be further scaled to only show that region of the ORF with annotated starts. This action will be indicated by adding "Zoomed" to the title. For starts, yellow indicates the location of called starts comprised solely of Glimmer/GeneMark auto-annotations, green indicates the location of called starts with at least 1 manual gene annotation.

Pham 303429 Report

This analysis was run 06/08/26 on database version 649.

Pham number 303429 has 52 members, 6 are drafts.

Phages represented in each track:

- Track 1 : Frankie_32
- Track 2 : Che9d_34, Avani_34
- Track 3 : Jabbawokkie_37, Zapner_36
- Track 4 : Yoshi_36
- Track 5 : Demsculpinboyz_34
- Track 6 : TChen_29, LunaStella_31
- Track 7 : Toron_30
- Track 8 : Vorrps_69, JangDynasty_69, Corndog_72, Mori_69, Firecracker_71, Smooch_72, MadKillah_70, Wogge42_68, KingPhillip3_68
- Track 9 : YoyoKar_67, Zakhe101_68, Murai_70, Imara_67, Alkhayr_69, Winget_70, Familton_70, Shida_69, Idergollasper_69, SchoolBus_69, TelAviv_66, NiebruSaylor_68, FoulBall_69, Blessica_70, Zebo_69, Vagabond_69, Ryadel_73, Bora_67, Krili_68, Catdawg_69, Dylan_69, Schuy_70
- Track 10 : Ashwin_71, Wildflower_69
- Track 11 : YungJamal_74
- Track 12 : JoieB_53, Corazon_50
- Track 13 : Clarkson_53, Lilbit_51, Huphlepuuff_54
- Track 14 : Caprice_49
- Track 15 : LittleLaf_52
- Track 16 : MooMoo_27

Summary of Final Annotations (See graph section above for start numbers):

The start number called the most often in the published annotations is 11, it was called in 30 of the 46 non-draft genes in the pham.

Genes that call this "Most Annotated" start:

- Alkhayr_69, Ashwin_71, Blessica_70, Bora_67, Catdawg_69, Corndog_72, Dylan_69, Familton_70, Firecracker_71, FoulBall_69, Idergollasper_69, Imara_67, JangDynasty_69, KingPhillip3_68, Krili_68, MadKillah_70, Mori_69, Murai_70, NiebruSaylor_68, Ryadel_73, SchoolBus_69, Schuy_70, Shida_69, Smooch_72, TelAviv_66, Vagabond_69, Vorrps_69, Wildflower_69, Winget_70, Wogge42_68, YoyoKar_67, YungJamal_74, Zakhe101_68, Zebo_69,

Genes that have the "Most Annotated" start but do not call it:

-

Genes that do not have the "Most Annotated" start:

- Avani_34, Caprice_49, Che9d_34, Clarkson_53, Corazon_50, Demsculpinboyz_34, Frankie_32, Huphlepuuff_54, Jabbawokkie_37, JoieB_53, Lilbit_51, LittleLaf_52, LunaStella_31, MooMoo_27, TChen_29, Toron_30, Yoshi_36, Zapner_36,

Summary by start number:

Start 7:

- Found in 9 of 52 (17.3%) of genes in pham
- Manual Annotations of this start: 5 of 46
- Called 66.7% of time when present
- Phage (with cluster) where this start called: Caprice_49 (S), Clarkson_53 (S), Corazon_50 (S), Huphlepuuff_54 (S), JoieB_53 (S), Lilbit_51 (S),

Start 8:

- Found in 8 of 52 (15.4%) of genes in pham
- Manual Annotations of this start: 2 of 46
- Called 25.0% of time when present
- Phage (with cluster) where this start called: LittleLaf_52 (S), Yoshi_36 (F2),

Start 10:

- Found in 11 of 52 (21.2%) of genes in pham
- Manual Annotations of this start: 9 of 46
- Called 90.9% of time when present
- Phage (with cluster) where this start called: Avani_34 (F2), Che9d_34 (F2), Demsculpinboyz_34 (F2), Frankie_32 (F1), Jabbawokkie_37 (F2), LunaStella_31 (F4), MooMoo_27 (singleton), TChen_29 (F4), Toron_30 (F6), Zapner_36 (F2),

Start 11:

- Found in 34 of 52 (65.4%) of genes in pham
- Manual Annotations of this start: 30 of 46
- Called 100.0% of time when present
- Phage (with cluster) where this start called: Alkhayr_69 (O), Ashwin_71 (O), Blessica_70 (O), Bora_67 (O), Catdawg_69 (O), Corndog_72 (O), Dylan_69 (O), Familton_70 (O), Firecracker_71 (O), FoulBall_69 (O), Idergollasper_69 (O), Imara_67 (O), JangDynasty_69 (O), KingPhillip3_68 (O), Krili_68 (O), MadKillah_70 (O), Mori_69 (O), Murai_70 (O), NiebruSaylor_68 (O), Ryadel_73 (O), SchoolBus_69 (O), Schuy_70 (O), Shida_69 (O), Smooch_72 (O), TelAviv_66 (O), Vagabond_69 (O), Vorrps_69 (O), Wildflower_69 (O), Winget_70 (O), Wogge42_68 (O), YoyoKar_67 (O), YungJamal_74 (O), Zakhe101_68 (O), Zebo_69 (O),

Summary by clusters:

There are 7 clusters represented in this pham: F1, F2, F4, F6, singleton, O, S,

Info for manual annotations of cluster F1:

- Start number 10 was manually annotated 1 time for cluster F1.

Info for manual annotations of cluster F2:

- Start number 8 was manually annotated 1 time for cluster F2.

- Start number 10 was manually annotated 5 times for cluster F2.

Info for manual annotations of cluster F4:

- Start number 10 was manually annotated 2 times for cluster F4.

Info for manual annotations of cluster O:

- Start number 11 was manually annotated 30 times for cluster O.

Info for manual annotations of cluster S:

- Start number 7 was manually annotated 5 times for cluster S.
- Start number 8 was manually annotated 1 time for cluster S.

Gene Information:

Gene: Alkhayr_69 Start: 44479, Stop: 44778, Start Num: 11

Candidate Starts for Alkhayr_69:

(5, 44323), (Start: 11 @44479 has 30 MA's), (15, 44515), (18, 44536), (21, 44560), (24, 44590), (26, 44608), (33, 44680), (34, 44689), (35, 44701), (36, 44731),

Gene: Ashwin_71 Start: 45249, Stop: 45548, Start Num: 11

Candidate Starts for Ashwin_71:

(Start: 11 @45249 has 30 MA's), (15, 45285), (18, 45306), (21, 45330), (23, 45351), (24, 45360), (26, 45378), (33, 45450), (34, 45459), (35, 45471), (36, 45501),

Gene: Avani_34 Start: 25152, Stop: 25445, Start Num: 10

Candidate Starts for Avani_34:

(1, 24972), (4, 24990), (6, 25026), (Start: 10 @25152 has 9 MA's), (20, 25224), (22, 25236), (28, 25314), (29, 25320), (31, 25332),

Gene: Blessica_70 Start: 45078, Stop: 45377, Start Num: 11

Candidate Starts for Blessica_70:

(5, 44922), (Start: 11 @45078 has 30 MA's), (15, 45114), (18, 45135), (21, 45159), (24, 45189), (26, 45207), (33, 45279), (34, 45288), (35, 45300), (36, 45330),

Gene: Bora_67 Start: 44459, Stop: 44758, Start Num: 11

Candidate Starts for Bora_67:

(5, 44303), (Start: 11 @44459 has 30 MA's), (15, 44495), (18, 44516), (21, 44540), (24, 44570), (26, 44588), (33, 44660), (34, 44669), (35, 44681), (36, 44711),

Gene: Caprice_49 Start: 29287, Stop: 29634, Start Num: 7

Candidate Starts for Caprice_49:

(Start: 7 @29287 has 5 MA's), (9, 29299), (13, 29338), (14, 29341), (16, 29374), (21, 29407), (23, 29428), (25, 29452), (26, 29455), (27, 29485), (35, 29542), (36, 29572), (37, 29575),

Gene: Catdawg_69 Start: 44814, Stop: 45113, Start Num: 11

Candidate Starts for Catdawg_69:

(5, 44658), (Start: 11 @44814 has 30 MA's), (15, 44850), (18, 44871), (21, 44895), (24, 44925), (26, 44943), (33, 45015), (34, 45024), (35, 45036), (36, 45066),

Gene: Che9d_34 Start: 25160, Stop: 25453, Start Num: 10

Candidate Starts for Che9d_34:

(1, 24980), (4, 24998), (6, 25034), (Start: 10 @25160 has 9 MA's), (20, 25232), (22, 25244), (28, 25322), (29, 25328), (31, 25340),

Gene: Clarkson_53 Start: 29656, Stop: 30003, Start Num: 7

Candidate Starts for Clarkson_53:

(Start: 7 @29656 has 5 MA's), (Start: 8 @29665 has 2 MA's), (9, 29668), (12, 29701), (13, 29707), (14, 29710), (21, 29776), (25, 29821), (26, 29824), (27, 29854), (38, 29974),

Gene: Corazon_50 Start: 29850, Stop: 30197, Start Num: 7

Candidate Starts for Corazon_50:

(Start: 7 @29850 has 5 MA's), (Start: 8 @29859 has 2 MA's), (9, 29862), (12, 29895), (13, 29901), (14, 29904), (21, 29970), (25, 30015), (26, 30018), (27, 30048), (38, 30168),

Gene: Corndog_72 Start: 45808, Stop: 46107, Start Num: 11

Candidate Starts for Corndog_72:

(5, 45652), (Start: 11 @45808 has 30 MA's), (15, 45844), (18, 45865), (21, 45889), (23, 45910), (24, 45919), (26, 45937), (33, 46009), (34, 46018), (35, 46030), (36, 46060),

Gene: Demsculpinboyz_34 Start: 25143, Stop: 25457, Start Num: 10

Candidate Starts for Demsculpinboyz_34:

(2, 24966), (3, 24981), (6, 25017), (Start: 10 @25143 has 9 MA's), (17, 25206), (19, 25215), (23, 25257), (29, 25332), (30, 25335), (32, 25347), (35, 25377),

Gene: Dylan_69 Start: 44861, Stop: 45160, Start Num: 11

Candidate Starts for Dylan_69:

(5, 44705), (Start: 11 @44861 has 30 MA's), (15, 44897), (18, 44918), (21, 44942), (24, 44972), (26, 44990), (33, 45062), (34, 45071), (35, 45083), (36, 45113),

Gene: Familton_70 Start: 44771, Stop: 45070, Start Num: 11

Candidate Starts for Familton_70:

(5, 44615), (Start: 11 @44771 has 30 MA's), (15, 44807), (18, 44828), (21, 44852), (24, 44882), (26, 44900), (33, 44972), (34, 44981), (35, 44993), (36, 45023),

Gene: Firecracker_71 Start: 45161, Stop: 45460, Start Num: 11

Candidate Starts for Firecracker_71:

(5, 45005), (Start: 11 @45161 has 30 MA's), (15, 45197), (18, 45218), (21, 45242), (23, 45263), (24, 45272), (26, 45290), (33, 45362), (34, 45371), (35, 45383), (36, 45413),

Gene: FoulBall_69 Start: 44765, Stop: 45064, Start Num: 11

Candidate Starts for FoulBall_69:

(5, 44609), (Start: 11 @44765 has 30 MA's), (15, 44801), (18, 44822), (21, 44846), (24, 44876), (26, 44894), (33, 44966), (34, 44975), (35, 44987), (36, 45017),

Gene: Frankie_32 Start: 26616, Stop: 26909, Start Num: 10

Candidate Starts for Frankie_32:

(Start: 10 @26616 has 9 MA's), (20, 26688), (22, 26700), (28, 26778), (29, 26784), (30, 26787), (31, 26796),

Gene: Huphlebuff_54 Start: 29461, Stop: 29808, Start Num: 7

Candidate Starts for Huphlebuff_54:

(Start: 7 @29461 has 5 MA's), (Start: 8 @29470 has 2 MA's), (9, 29473), (12, 29506), (13, 29512), (14, 29515), (21, 29581), (25, 29626), (26, 29629), (27, 29659), (38, 29779),

Gene: Idergollasper_69 Start: 44765, Stop: 45064, Start Num: 11

Candidate Starts for Idergollasper_69:

(5, 44609), (Start: 11 @44765 has 30 MA's), (15, 44801), (18, 44822), (21, 44846), (24, 44876), (26, 44894), (33, 44966), (34, 44975), (35, 44987), (36, 45017),

Gene: Imara_67 Start: 44565, Stop: 44864, Start Num: 11

Candidate Starts for Imara_67:

(5, 44409), (Start: 11 @44565 has 30 MA's), (15, 44601), (18, 44622), (21, 44646), (24, 44676), (26, 44694), (33, 44766), (34, 44775), (35, 44787), (36, 44817),

Gene: Jabbawokkie_37 Start: 26591, Stop: 26905, Start Num: 10

Candidate Starts for Jabbawokkie_37:

(6, 26465), (Start: 10 @26591 has 9 MA's), (17, 26654), (19, 26663), (23, 26705), (29, 26780), (30, 26783), (32, 26795), (35, 26825),

Gene: JangDynasty_69 Start: 44851, Stop: 45150, Start Num: 11

Candidate Starts for JangDynasty_69:

(5, 44695), (Start: 11 @44851 has 30 MA's), (15, 44887), (18, 44908), (21, 44932), (23, 44953), (24, 44962), (26, 44980), (33, 45052), (34, 45061), (35, 45073), (36, 45103),

Gene: JoieB_53 Start: 29894, Stop: 30241, Start Num: 7

Candidate Starts for JoieB_53:

(Start: 7 @29894 has 5 MA's), (Start: 8 @29903 has 2 MA's), (9, 29906), (12, 29939), (13, 29945), (14, 29948), (21, 30014), (25, 30059), (26, 30062), (27, 30092), (38, 30212),

Gene: KingPhillip3_68 Start: 44780, Stop: 45079, Start Num: 11

Candidate Starts for KingPhillip3_68:

(5, 44624), (Start: 11 @44780 has 30 MA's), (15, 44816), (18, 44837), (21, 44861), (23, 44882), (24, 44891), (26, 44909), (33, 44981), (34, 44990), (35, 45002), (36, 45032),

Gene: Krili_68 Start: 44275, Stop: 44574, Start Num: 11

Candidate Starts for Krili_68:

(5, 44119), (Start: 11 @44275 has 30 MA's), (15, 44311), (18, 44332), (21, 44356), (24, 44386), (26, 44404), (33, 44476), (34, 44485), (35, 44497), (36, 44527),

Gene: Lilbit_51 Start: 29657, Stop: 30004, Start Num: 7

Candidate Starts for Lilbit_51:

(Start: 7 @29657 has 5 MA's), (Start: 8 @29666 has 2 MA's), (9, 29669), (12, 29702), (13, 29708), (14, 29711), (21, 29777), (25, 29822), (26, 29825), (27, 29855), (38, 29975),

Gene: LittleLaf_52 Start: 29395, Stop: 29733, Start Num: 8

Candidate Starts for LittleLaf_52:

(Start: 7 @29386 has 5 MA's), (Start: 8 @29395 has 2 MA's), (9, 29398), (12, 29431), (13, 29437), (14, 29440), (21, 29506), (25, 29551), (26, 29554), (27, 29584), (38, 29704),

Gene: LunaStella_31 Start: 26515, Stop: 26829, Start Num: 10

Candidate Starts for LunaStella_31:

(Start: 10 @26515 has 9 MA's), (17, 26578), (23, 26629), (29, 26704), (30, 26707), (32, 26719), (35, 26749),

Gene: MadKillah_70 Start: 44544, Stop: 44843, Start Num: 11

Candidate Starts for MadKillah_70:

(5, 44388), (Start: 11 @44544 has 30 MA's), (15, 44580), (18, 44601), (21, 44625), (23, 44646), (24, 44655), (26, 44673), (33, 44745), (34, 44754), (35, 44766), (36, 44796),

Gene: MooMoo_27 Start: 25154, Stop: 25462, Start Num: 10

Candidate Starts for MooMoo_27:

(Start: 10 @25154 has 9 MA's), (17, 25217), (28, 25325), (36, 25406),

Gene: Mori_69 Start: 44806, Stop: 45105, Start Num: 11

Candidate Starts for Mori_69:

(5, 44650), (Start: 11 @44806 has 30 MA's), (15, 44842), (18, 44863), (21, 44887), (23, 44908), (24, 44917), (26, 44935), (33, 45007), (34, 45016), (35, 45028), (36, 45058),

Gene: Murai_70 Start: 44987, Stop: 45286, Start Num: 11

Candidate Starts for Murai_70:

(5, 44831), (Start: 11 @44987 has 30 MA's), (15, 45023), (18, 45044), (21, 45068), (24, 45098), (26, 45116), (33, 45188), (34, 45197), (35, 45209), (36, 45239),

Gene: NiebruSaylor_68 Start: 44194, Stop: 44493, Start Num: 11

Candidate Starts for NiebruSaylor_68:

(5, 44038), (Start: 11 @44194 has 30 MA's), (15, 44230), (18, 44251), (21, 44275), (24, 44305), (26, 44323), (33, 44395), (34, 44404), (35, 44416), (36, 44446),

Gene: Ryadel_73 Start: 45599, Stop: 45898, Start Num: 11

Candidate Starts for Ryadel_73:

(5, 45443), (Start: 11 @45599 has 30 MA's), (15, 45635), (18, 45656), (21, 45680), (24, 45710), (26, 45728), (33, 45800), (34, 45809), (35, 45821), (36, 45851),

Gene: SchoolBus_69 Start: 44759, Stop: 45046, Start Num: 11

Candidate Starts for SchoolBus_69:

(5, 44603), (Start: 11 @44759 has 30 MA's), (15, 44795), (18, 44816), (21, 44840), (24, 44870), (26, 44888), (33, 44948), (34, 44957), (35, 44969), (36, 44999),

Gene: Schuy_70 Start: 44550, Stop: 44849, Start Num: 11

Candidate Starts for Schuy_70:

(5, 44394), (Start: 11 @44550 has 30 MA's), (15, 44586), (18, 44607), (21, 44631), (24, 44661), (26, 44679), (33, 44751), (34, 44760), (35, 44772), (36, 44802),

Gene: Shida_69 Start: 44457, Stop: 44756, Start Num: 11

Candidate Starts for Shida_69:

(5, 44301), (Start: 11 @44457 has 30 MA's), (15, 44493), (18, 44514), (21, 44538), (24, 44568), (26, 44586), (33, 44658), (34, 44667), (35, 44679), (36, 44709),

Gene: Smooch_72 Start: 46503, Stop: 46802, Start Num: 11

Candidate Starts for Smooch_72:

(5, 46347), (Start: 11 @46503 has 30 MA's), (15, 46539), (18, 46560), (21, 46584), (23, 46605), (24, 46614), (26, 46632), (33, 46704), (34, 46713), (35, 46725), (36, 46755),

Gene: TChen_29 Start: 26516, Stop: 26830, Start Num: 10

Candidate Starts for TChen_29:

(Start: 10 @26516 has 9 MA's), (17, 26579), (23, 26630), (29, 26705), (30, 26708), (32, 26720), (35, 26750),

Gene: TelAviv_66 Start: 44732, Stop: 45031, Start Num: 11

Candidate Starts for TelAviv_66:

(5, 44576), (Start: 11 @44732 has 30 MA's), (15, 44768), (18, 44789), (21, 44813), (24, 44843), (26, 44861), (33, 44933), (34, 44942), (35, 44954), (36, 44984),

Gene: Toron_30 Start: 26439, Stop: 26747, Start Num: 10

Candidate Starts for Toron_30:

(Start: 7 @26409 has 5 MA's), (Start: 8 @26418 has 2 MA's), (Start: 10 @26439 has 9 MA's), (17, 26502), (28, 26610),

Gene: Vagabond_69 Start: 44595, Stop: 44894, Start Num: 11

Candidate Starts for Vagabond_69:

(5, 44439), (Start: 11 @44595 has 30 MA's), (15, 44631), (18, 44652), (21, 44676), (24, 44706), (26, 44724), (33, 44796), (34, 44805), (35, 44817), (36, 44847),

Gene: Vorrps_69 Start: 44807, Stop: 45106, Start Num: 11

Candidate Starts for Vorrps_69:

(5, 44651), (Start: 11 @44807 has 30 MA's), (15, 44843), (18, 44864), (21, 44888), (23, 44909), (24, 44918), (26, 44936), (33, 45008), (34, 45017), (35, 45029), (36, 45059),

Gene: Wildflower_69 Start: 44319, Stop: 44618, Start Num: 11

Candidate Starts for Wildflower_69:

(Start: 11 @44319 has 30 MA's), (15, 44355), (18, 44376), (21, 44400), (23, 44421), (24, 44430), (26, 44448), (33, 44520), (34, 44529), (35, 44541), (36, 44571),

Gene: Winget_70 Start: 45025, Stop: 45324, Start Num: 11

Candidate Starts for Winget_70:

(5, 44869), (Start: 11 @45025 has 30 MA's), (15, 45061), (18, 45082), (21, 45106), (24, 45136), (26, 45154), (33, 45226), (34, 45235), (35, 45247), (36, 45277),

Gene: Wogge42_68 Start: 44466, Stop: 44765, Start Num: 11

Candidate Starts for Wogge42_68:

(5, 44310), (Start: 11 @44466 has 30 MA's), (15, 44502), (18, 44523), (21, 44547), (23, 44568), (24, 44577), (26, 44595), (33, 44667), (34, 44676), (35, 44688), (36, 44718),

Gene: Yoshi_36 Start: 25524, Stop: 25847, Start Num: 8

Candidate Starts for Yoshi_36:

(Start: 7 @25515 has 5 MA's), (Start: 8 @25524 has 2 MA's), (Start: 10 @25545 has 9 MA's), (17, 25608), (28, 25716),

Gene: YoyoKar_67 Start: 44309, Stop: 44608, Start Num: 11

Candidate Starts for YoyoKar_67:

(5, 44153), (Start: 11 @44309 has 30 MA's), (15, 44345), (18, 44366), (21, 44390), (24, 44420), (26, 44438), (33, 44510), (34, 44519), (35, 44531), (36, 44561),

Gene: YungJamal_74 Start: 46217, Stop: 46516, Start Num: 11

Candidate Starts for YungJamal_74:

(5, 46061), (Start: 11 @46217 has 30 MA's), (15, 46253), (18, 46274), (21, 46298), (23, 46319), (24, 46328), (26, 46346), (34, 46427), (35, 46439), (36, 46469),

Gene: Zakhe101_68 Start: 44865, Stop: 45164, Start Num: 11

Candidate Starts for Zakhe101_68:

(5, 44709), (Start: 11 @44865 has 30 MA's), (15, 44901), (18, 44922), (21, 44946), (24, 44976), (26, 44994), (33, 45066), (34, 45075), (35, 45087), (36, 45117),

Gene: Zapner_36 Start: 26592, Stop: 26906, Start Num: 10

Candidate Starts for Zapner_36:

(6, 26466), (Start: 10 @26592 has 9 MA's), (17, 26655), (19, 26664), (23, 26706), (29, 26781), (30, 26784), (32, 26796), (35, 26826),

Gene: Zebo_69 Start: 44768, Stop: 45055, Start Num: 11

Candidate Starts for Zebo_69:

(5, 44612), (Start: 11 @44768 has 30 MA's), (15, 44804), (18, 44825), (21, 44849), (24, 44879), (26, 44897), (33, 44957), (34, 44966), (35, 44978), (36, 45008),