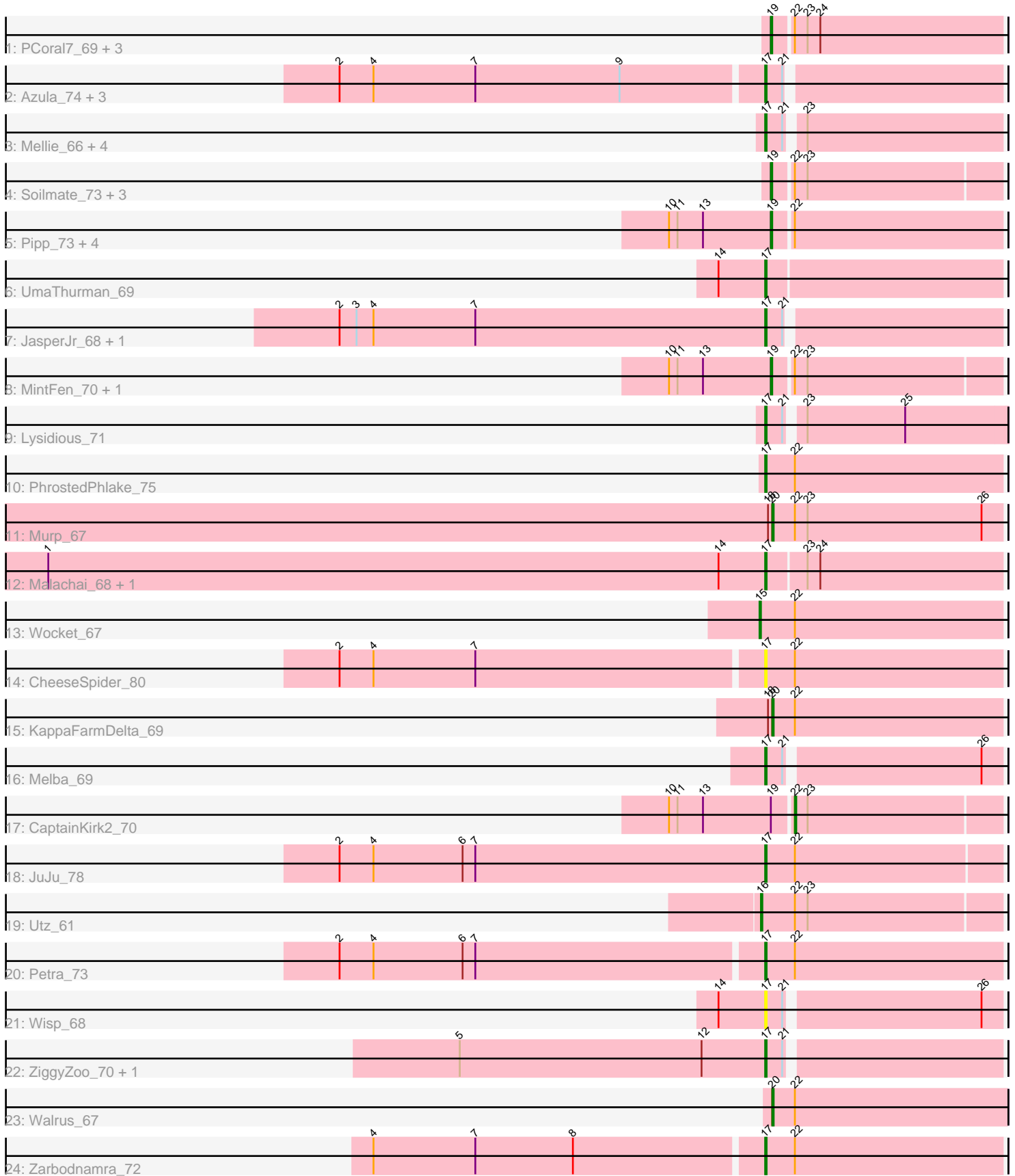


Pham 303470



Note: Tracks are now grouped by subcluster and scaled. Switching in subcluster is indicated by changes in track color. Track scale is now set by default to display the region 30 bp upstream of start 1 to 30 bp downstream of the last possible start. If this default region is judged to be packed too tightly with annotated starts, the track will be further scaled to only show that region of the ORF with annotated starts. This action will be indicated by adding "Zoomed" to the title. For starts, yellow indicates the location of called starts comprised solely of Glimmer/GeneMark auto-annotations, green indicates the location of called starts with at least 1 manual gene annotation.

Pham 303470 Report

This analysis was run 06/08/26 on database version 649.

Pham number 303470 has 45 members, 3 are drafts.

Phages represented in each track:

- Track 1 : PCoral7_69, PrincePatrick_70, William_72, Toast_69
- Track 2 : Azula_74, MissRona_74, Gambino_76, Blueberry_73
- Track 3 : Mellie_66, Jalammah_72, Fenry_68, Hitter_69, Samba_69
- Track 4 : Soilmate_73, CarolAnn_70, Blino_71, Fairfaxidum_72
- Track 5 : Pipp_73, Obliviate_68, Barco_66, BlingBling_65, Zilla_66
- Track 6 : UmaThurman_69
- Track 7 : JasperJr_68, Guacamole_68
- Track 8 : MintFen_70, Delian_73
- Track 9 : Lysidious_71
- Track 10 : PhrostedPhlake_75
- Track 11 : Murp_67
- Track 12 : Malachai_68, Begonia_68
- Track 13 : Wocket_67
- Track 14 : CheeseSpider_80
- Track 15 : KappaFarmDelta_69
- Track 16 : Melba_69
- Track 17 : CaptainKirk2_70
- Track 18 : JuJu_78
- Track 19 : Utz_61
- Track 20 : Petra_73
- Track 21 : Wisp_68
- Track 22 : ZiggyZoo_70, Archis_71
- Track 23 : Walrus_67
- Track 24 : Zarbodnamra_72

Summary of Final Annotations (See graph section above for start numbers):

The start number called the most often in the published annotations is 17, it was called in 22 of the 42 non-draft genes in the pham.

Genes that call this "Most Annotated" start:

- Archis_71, Azula_74, Begonia_68, Blueberry_73, CheeseSpider_80, Fenry_68, Gambino_76, Guacamole_68, Hitter_69, Jalammah_72, JasperJr_68, JuJu_78, Lysidious_71, Malachai_68, Melba_69, Mellie_66, MissRona_74, Petra_73,

PhrostedPhlake_75, Samba_69, UmaThurman_69, Wisp_68, Zarbodnamra_72, ZiggyZoo_70,

Genes that have the "Most Annotated" start but do not call it:

-

Genes that do not have the "Most Annotated" start:

• Barco_66, BlingBling_65, Blino_71, CaptainKirk2_70, CarolAnn_70, Delian_73, Fairfaxidum_72, KappaFarmDelta_69, MintFen_70, Murp_67, Obliviate_68, PCoral7_69, Pipp_73, PrincePatrick_70, Soilmate_73, Toast_69, Utz_61, Walrus_67, William_72, Wocket_67, Zilla_66,

Summary by start number:

Start 15:

- Found in 1 of 45 (2.2%) of genes in pham
- Manual Annotations of this start: 1 of 42
- Called 100.0% of time when present
- Phage (with cluster) where this start called: Wocket_67 (CV),

Start 16:

- Found in 1 of 45 (2.2%) of genes in pham
- Manual Annotations of this start: 1 of 42
- Called 100.0% of time when present
- Phage (with cluster) where this start called: Utz_61 (CV),

Start 17:

- Found in 24 of 45 (53.3%) of genes in pham
- Manual Annotations of this start: 22 of 42
- Called 100.0% of time when present
- Phage (with cluster) where this start called: Archis_71 (CV), Azula_74 (CV), Begonia_68 (CV), Blueberry_73 (CV), CheeseSpider_80 (CV), Ferry_68 (CV), Gambino_76 (CV), Guacamole_68 (CV), Hitter_69 (CV), Jalammah_72 (CV), JasperJr_68 (CV), JuJu_78 (CV), Lysidious_71 (CV), Malachai_68 (CV), Melba_69 (CV), Mellie_66 (CV), MissRona_74 (CV), Petra_73 (CV), PhrostedPhlake_75 (CV), Samba_69 (CV), UmaThurman_69 (CV), Wisp_68 (CV), Zarbodnamra_72 (CV), ZiggyZoo_70 (CV),

Start 19:

- Found in 16 of 45 (35.6%) of genes in pham
- Manual Annotations of this start: 14 of 42
- Called 93.8% of time when present
- Phage (with cluster) where this start called: Barco_66 (CV), BlingBling_65 (CV), Blino_71 (CV), CarolAnn_70 (CV), Delian_73 (CV), Fairfaxidum_72 (CV), MintFen_70 (CV), Obliviate_68 (CV), PCoral7_69 (CV), Pipp_73 (CV), PrincePatrick_70 (CV), Soilmate_73 (CV), Toast_69 (CV), William_72 (CV), Zilla_66 (CV),

Start 20:

- Found in 3 of 45 (6.7%) of genes in pham
- Manual Annotations of this start: 3 of 42
- Called 100.0% of time when present
- Phage (with cluster) where this start called: KappaFarmDelta_69 (CV), Murp_67 (CV), Walrus_67 (CV),

Start 22:

- Found in 26 of 45 (57.8%) of genes in pham
- Manual Annotations of this start: 1 of 42
- Called 3.8% of time when present
- Phage (with cluster) where this start called: CaptainKirk2_70 (CV),

Summary by clusters:

There is one cluster represented in this pham: CV

Info for manual annotations of cluster CV:

- Start number 15 was manually annotated 1 time for cluster CV.
- Start number 16 was manually annotated 1 time for cluster CV.
- Start number 17 was manually annotated 22 times for cluster CV.
- Start number 19 was manually annotated 14 times for cluster CV.
- Start number 20 was manually annotated 3 times for cluster CV.
- Start number 22 was manually annotated 1 time for cluster CV.

Gene Information:

Gene: Archis_71 Start: 42723, Stop: 42881, Start Num: 17

Candidate Starts for Archis_71:

(5, 42507), (12, 42678), (Start: 17 @42723 has 22 MA's), (21, 42735),

Gene: Azula_74 Start: 46615, Stop: 46773, Start Num: 17

Candidate Starts for Azula_74:

(2, 46321), (4, 46345), (7, 46417), (9, 46519), (Start: 17 @46615 has 22 MA's), (21, 46627),

Gene: Barco_66 Start: 42553, Stop: 42711, Start Num: 19

Candidate Starts for Barco_66:

(10, 42481), (11, 42487), (13, 42505), (Start: 19 @42553 has 14 MA's), (Start: 22 @42565 has 1 MA's),

Gene: Begonia_68 Start: 45480, Stop: 45644, Start Num: 17

Candidate Starts for Begonia_68:

(1, 44973), (14, 45447), (Start: 17 @45480 has 22 MA's), (23, 45507), (24, 45516),

Gene: BlingBling_65 Start: 43435, Stop: 43593, Start Num: 19

Candidate Starts for BlingBling_65:

(10, 43363), (11, 43369), (13, 43387), (Start: 19 @43435 has 14 MA's), (Start: 22 @43447 has 1 MA's),

Gene: Blino_71 Start: 48216, Stop: 48371, Start Num: 19

Candidate Starts for Blino_71:

(Start: 19 @48216 has 14 MA's), (Start: 22 @48228 has 1 MA's), (23, 48237),

Gene: Blueberry_73 Start: 46615, Stop: 46773, Start Num: 17

Candidate Starts for Blueberry_73:

(2, 46321), (4, 46345), (7, 46417), (9, 46519), (Start: 17 @46615 has 22 MA's), (21, 46627),

Gene: CaptainKirk2_70 Start: 42213, Stop: 42356, Start Num: 22

Candidate Starts for CaptainKirk2_70:

(10, 42129), (11, 42135), (13, 42153), (Start: 19 @42201 has 14 MA's), (Start: 22 @42213 has 1 MA's), (23, 42222),

Gene: CarolAnn_70 Start: 48215, Stop: 48370, Start Num: 19
Candidate Starts for CarolAnn_70:
(Start: 19 @48215 has 14 MA's), (Start: 22 @48227 has 1 MA's), (23, 48236),

Gene: CheeseSpider_80 Start: 46540, Stop: 46707, Start Num: 17
Candidate Starts for CheeseSpider_80:
(2, 46246), (4, 46270), (7, 46342), (Start: 17 @46540 has 22 MA's), (Start: 22 @46561 has 1 MA's),

Gene: Delian_73 Start: 42199, Stop: 42354, Start Num: 19
Candidate Starts for Delian_73:
(10, 42127), (11, 42133), (13, 42151), (Start: 19 @42199 has 14 MA's), (Start: 22 @42211 has 1 MA's), (23, 42220),

Gene: Fairfaxidum_72 Start: 44764, Stop: 44922, Start Num: 19
Candidate Starts for Fairfaxidum_72:
(Start: 19 @44764 has 14 MA's), (Start: 22 @44776 has 1 MA's), (23, 44785),

Gene: Fenry_68 Start: 44226, Stop: 44384, Start Num: 17
Candidate Starts for Fenry_68:
(Start: 17 @44226 has 22 MA's), (21, 44238), (23, 44247),

Gene: Gambino_76 Start: 46615, Stop: 46773, Start Num: 17
Candidate Starts for Gambino_76:
(2, 46321), (4, 46345), (7, 46417), (9, 46519), (Start: 17 @46615 has 22 MA's), (21, 46627),

Gene: Guacamole_68 Start: 43616, Stop: 43774, Start Num: 17
Candidate Starts for Guacamole_68:
(2, 43316), (3, 43328), (4, 43340), (7, 43412), (Start: 17 @43616 has 22 MA's), (21, 43628),

Gene: Hitter_69 Start: 42159, Stop: 42317, Start Num: 17
Candidate Starts for Hitter_69:
(Start: 17 @42159 has 22 MA's), (21, 42171), (23, 42180),

Gene: Jalammah_72 Start: 45129, Stop: 45290, Start Num: 17
Candidate Starts for Jalammah_72:
(Start: 17 @45129 has 22 MA's), (21, 45141), (23, 45150),

Gene: JasperJr_68 Start: 43616, Stop: 43774, Start Num: 17
Candidate Starts for JasperJr_68:
(2, 43316), (3, 43328), (4, 43340), (7, 43412), (Start: 17 @43616 has 22 MA's), (21, 43628),

Gene: JuJu_78 Start: 48352, Stop: 48516, Start Num: 17
Candidate Starts for JuJu_78:
(2, 48052), (4, 48076), (6, 48139), (7, 48148), (Start: 17 @48352 has 22 MA's), (Start: 22 @48373 has 1 MA's),

Gene: KappaFarmDelta_69 Start: 43192, Stop: 43353, Start Num: 20
Candidate Starts for KappaFarmDelta_69:
(18, 43189), (Start: 20 @43192 has 3 MA's), (Start: 22 @43207 has 1 MA's),

Gene: Lysidious_71 Start: 44855, Stop: 45016, Start Num: 17
Candidate Starts for Lysidious_71:
(Start: 17 @44855 has 22 MA's), (21, 44867), (23, 44876), (25, 44945),

Gene: Malachai_68 Start: 45480, Stop: 45644, Start Num: 17
Candidate Starts for Malachai_68:
(1, 44973), (14, 45447), (Start: 17 @45480 has 22 MA's), (23, 45507), (24, 45516),

Gene: Melba_69 Start: 42570, Stop: 42728, Start Num: 17
Candidate Starts for Melba_69:
(Start: 17 @42570 has 22 MA's), (21, 42582), (26, 42714),

Gene: Mellie_66 Start: 42417, Stop: 42575, Start Num: 17
Candidate Starts for Mellie_66:
(Start: 17 @42417 has 22 MA's), (21, 42429), (23, 42438),

Gene: MintFen_70 Start: 42815, Stop: 42970, Start Num: 19
Candidate Starts for MintFen_70:
(10, 42743), (11, 42749), (13, 42767), (Start: 19 @42815 has 14 MA's), (Start: 22 @42827 has 1 MA's),
(23, 42836),

Gene: MissRona_74 Start: 46616, Stop: 46774, Start Num: 17
Candidate Starts for MissRona_74:
(2, 46322), (4, 46346), (7, 46418), (9, 46520), (Start: 17 @46616 has 22 MA's), (21, 46628),

Gene: Murp_67 Start: 45821, Stop: 45982, Start Num: 20
Candidate Starts for Murp_67:
(18, 45818), (Start: 20 @45821 has 3 MA's), (Start: 22 @45836 has 1 MA's), (23, 45845), (26, 45968),

Gene: Obliviate_68 Start: 42724, Stop: 42882, Start Num: 19
Candidate Starts for Obliviate_68:
(10, 42652), (11, 42658), (13, 42676), (Start: 19 @42724 has 14 MA's), (Start: 22 @42736 has 1 MA's),

Gene: PCoral7_69 Start: 43537, Stop: 43695, Start Num: 19
Candidate Starts for PCoral7_69:
(Start: 19 @43537 has 14 MA's), (Start: 22 @43549 has 1 MA's), (23, 43558), (24, 43567),

Gene: Petra_73 Start: 44768, Stop: 44935, Start Num: 17
Candidate Starts for Petra_73:
(2, 44474), (4, 44498), (6, 44561), (7, 44570), (Start: 17 @44768 has 22 MA's), (Start: 22 @44789 has
1 MA's),

Gene: PhrostedPhlake_75 Start: 45016, Stop: 45183, Start Num: 17
Candidate Starts for PhrostedPhlake_75:
(Start: 17 @45016 has 22 MA's), (Start: 22 @45037 has 1 MA's),

Gene: Pipp_73 Start: 44772, Stop: 44930, Start Num: 19
Candidate Starts for Pipp_73:
(10, 44700), (11, 44706), (13, 44724), (Start: 19 @44772 has 14 MA's), (Start: 22 @44784 has 1 MA's),

Gene: PrincePatrick_70 Start: 42596, Stop: 42754, Start Num: 19
Candidate Starts for PrincePatrick_70:
(Start: 19 @42596 has 14 MA's), (Start: 22 @42608 has 1 MA's), (23, 42617), (24, 42626),

Gene: Samba_69 Start: 45554, Stop: 45712, Start Num: 17

Candidate Starts for Samba_69:

(Start: 17 @45554 has 22 MA's), (21, 45566), (23, 45575),

Gene: Soilmate_73 Start: 48215, Stop: 48370, Start Num: 19

Candidate Starts for Soilmate_73:

(Start: 19 @48215 has 14 MA's), (Start: 22 @48227 has 1 MA's), (23, 48236),

Gene: Toast_69 Start: 43537, Stop: 43695, Start Num: 19

Candidate Starts for Toast_69:

(Start: 19 @43537 has 14 MA's), (Start: 22 @43549 has 1 MA's), (23, 43558), (24, 43567),

Gene: UmaThurman_69 Start: 43900, Stop: 44064, Start Num: 17

Candidate Starts for UmaThurman_69:

(14, 43867), (Start: 17 @43900 has 22 MA's),

Gene: Utz_61 Start: 43181, Stop: 43348, Start Num: 16

Candidate Starts for Utz_61:

(Start: 16 @43181 has 1 MA's), (Start: 22 @43205 has 1 MA's), (23, 43214),

Gene: Walrus_67 Start: 43261, Stop: 43425, Start Num: 20

Candidate Starts for Walrus_67:

(Start: 20 @43261 has 3 MA's), (Start: 22 @43276 has 1 MA's),

Gene: William_72 Start: 44944, Stop: 45102, Start Num: 19

Candidate Starts for William_72:

(Start: 19 @44944 has 14 MA's), (Start: 22 @44956 has 1 MA's), (23, 44965), (24, 44974),

Gene: Wisp_68 Start: 43598, Stop: 43756, Start Num: 17

Candidate Starts for Wisp_68:

(14, 43565), (Start: 17 @43598 has 22 MA's), (21, 43610), (26, 43742),

Gene: Wocket_67 Start: 43577, Stop: 43747, Start Num: 15

Candidate Starts for Wocket_67:

(Start: 15 @43577 has 1 MA's), (Start: 22 @43601 has 1 MA's),

Gene: Zarbodnamra_72 Start: 43709, Stop: 43876, Start Num: 17

Candidate Starts for Zarbodnamra_72:

(4, 43439), (7, 43511), (8, 43580), (Start: 17 @43709 has 22 MA's), (Start: 22 @43730 has 1 MA's),

Gene: ZiggyZoo_70 Start: 45187, Stop: 45345, Start Num: 17

Candidate Starts for ZiggyZoo_70:

(5, 44971), (12, 45142), (Start: 17 @45187 has 22 MA's), (21, 45199),

Gene: Zilla_66 Start: 42570, Stop: 42728, Start Num: 19

Candidate Starts for Zilla_66:

(10, 42498), (11, 42504), (13, 42522), (Start: 19 @42570 has 14 MA's), (Start: 22 @42582 has 1 MA's),