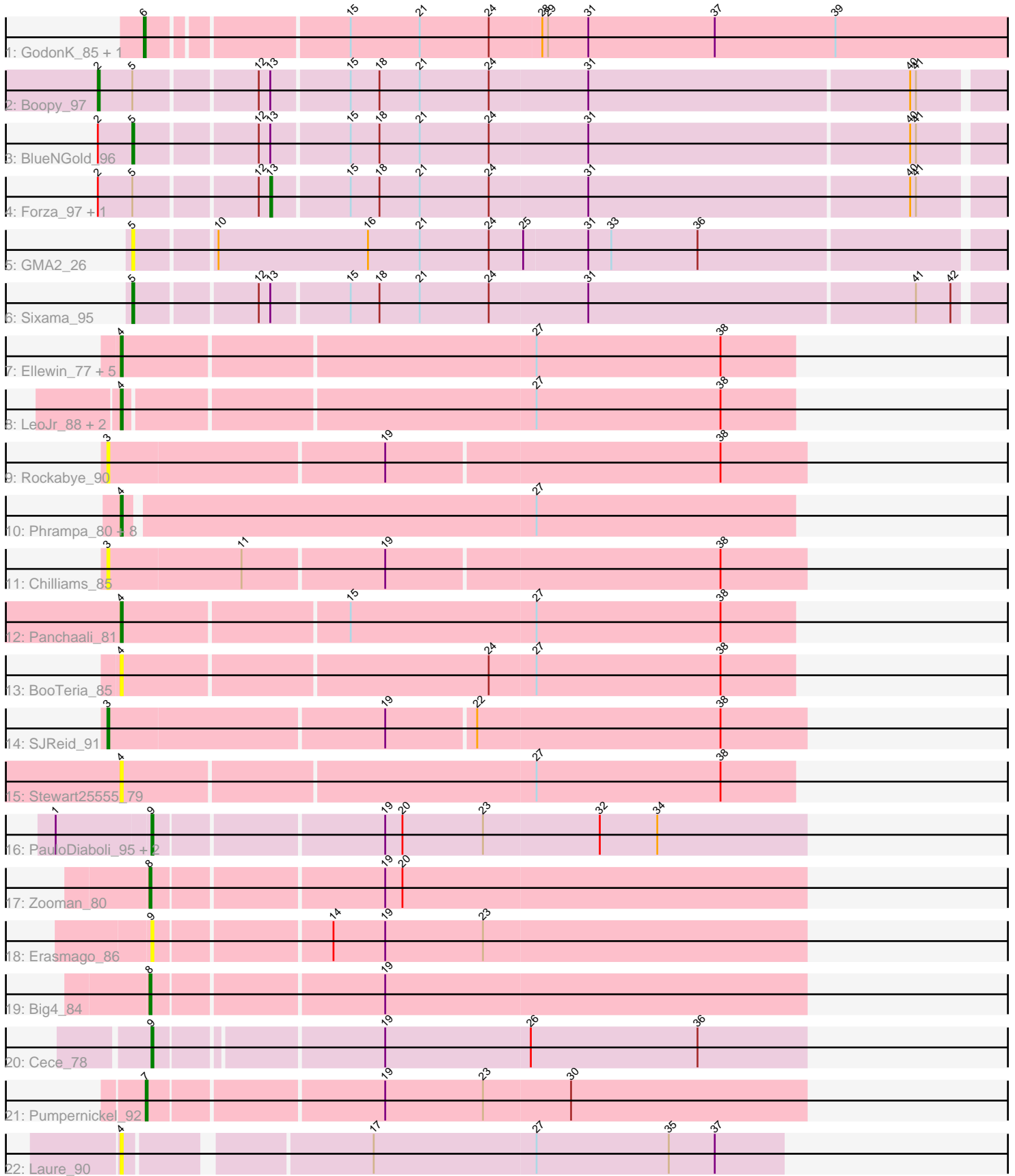


Pham 303489



Note: Tracks are now grouped by subcluster and scaled. Switching in subcluster is indicated by changes in track color. Track scale is now set by default to display the region 30 bp upstream of start 1 to 30 bp downstream of the last possible start. If this default region is judged to be packed too tightly with annotated starts, the track will be further scaled to only show that region of the ORF with annotated starts. This action will be indicated by adding "Zoomed" to the title. For starts, yellow indicates the location of called starts comprised solely of Glimmer/GeneMark auto-annotations, green indicates the location of called starts with at least 1 manual gene annotation.

Pham 303489 Report

This analysis was run 06/08/26 on database version 649.

Pham number 303489 has 41 members, 15 are drafts.

Phages represented in each track:

- Track 1 : GodonK_85, Phendrix_83
- Track 2 : Boopy_97
- Track 3 : BlueNGold_96
- Track 4 : Forza_97, Mareelih_95
- Track 5 : GMA2_26
- Track 6 : Sixama_95
- Track 7 : Ellewin_77, Artu_81, KSunshine22_83, Emmetator_81, WaddleDee_76, DunneganBoMo_78
- Track 8 : LeoJr_88, Atuin_83, ReginaGlobina_88
- Track 9 : Rockabye_90
- Track 10 : Phrampa_80, GoldenEssence_74, Patbob_87, FloraSnap32_88, Bloom_92, Racecar_89, Talia1610_88, FrostedClock_90, Mimi_88
- Track 11 : Chilliams_85
- Track 12 : Panchaali_81
- Track 13 : BooTeria_85
- Track 14 : SJReid_91
- Track 15 : Stewart25555_79
- Track 16 : PauloDiaboli_95, A3Wally_95, Dodo_97
- Track 17 : Zooman_80
- Track 18 : Erasmago_86
- Track 19 : Big4_84
- Track 20 : Cece_78
- Track 21 : Pumpernickel_92
- Track 22 : Laure_90

Summary of Final Annotations (See graph section above for start numbers):

The start number called the most often in the published annotations is 4, it was called in 11 of the 26 non-draft genes in the pham.

Genes that call this "Most Annotated" start:

- Artu_81, Atuin_83, Bloom_92, BooTeria_85, DunneganBoMo_78, Ellewin_77, Emmetator_81, FloraSnap32_88, FrostedClock_90, GoldenEssence_74, KSunshine22_83, Laure_90, LeoJr_88, Mimi_88, Panchaali_81, Patbob_87,

Phrampa_80, Racecar_89, ReginaGlobina_88, Stewart25555_79, Talia1610_88, WaddleDee_76,

Genes that have the "Most Annotated" start but do not call it:

-

Genes that do not have the "Most Annotated" start:

• A3Wally_95, Big4_84, BlueNGGold_96, Boopy_97, Cece_78, Chilliams_85, Dodo_97, Erasmago_86, Forza_97, GMA2_26, GodonK_85, Mareelih_95, PauloDiaboli_95, Phendrix_83, Pumpernickel_92, Rockabye_90, SJReid_91, Sixama_95, Zooman_80,

Summary by start number:

Start 2:

- Found in 4 of 41 (9.8%) of genes in pham
- Manual Annotations of this start: 1 of 26
- Called 25.0% of time when present
- Phage (with cluster) where this start called: Boopy_97 (DS),

Start 3:

- Found in 3 of 41 (7.3%) of genes in pham
- Manual Annotations of this start: 1 of 26
- Called 100.0% of time when present
- Phage (with cluster) where this start called: Chilliams_85 (FC), Rockabye_90 (FC), SJReid_91 (FC),

Start 4:

- Found in 22 of 41 (53.7%) of genes in pham
- Manual Annotations of this start: 11 of 26
- Called 100.0% of time when present
- Phage (with cluster) where this start called: Artu_81 (FC), Atuin_83 (FC), Bloom_92 (FC), BooTeria_85 (FC), DunneganBoMo_78 (FC), Ellewin_77 (FC), Emmetator_81 (FC), FloraSnap32_88 (FC), FrostedClock_90 (FC), GoldenEssence_74 (FC), KSunshine22_83 (FC), Laure_90 (UNK), LeoJr_88 (FC), Mimi_88 (FC), Panchaali_81 (FC), Patbob_87 (FC), Phrampa_80 (FC), Racecar_89 (FC), ReginaGlobina_88 (FC), Stewart25555_79 (FC), Talia1610_88 (FC), WaddleDee_76 (FC),

Start 5:

- Found in 6 of 41 (14.6%) of genes in pham
- Manual Annotations of this start: 2 of 26
- Called 50.0% of time when present
- Phage (with cluster) where this start called: BlueNGGold_96 (DS), GMA2_26 (DS), Sixama_95 (DS),

Start 6:

- Found in 2 of 41 (4.9%) of genes in pham
- Manual Annotations of this start: 2 of 26
- Called 100.0% of time when present
- Phage (with cluster) where this start called: GodonK_85 (DK), Phendrix_83 (DK),

Start 7:

- Found in 1 of 41 (2.4%) of genes in pham
- Manual Annotations of this start: 1 of 26

- Called 100.0% of time when present
- Phage (with cluster) where this start called: Pumpernickel_92 (GD4),

Start 8:

- Found in 2 of 41 (4.9%) of genes in pham
- Manual Annotations of this start: 2 of 26
- Called 100.0% of time when present
- Phage (with cluster) where this start called: Big4_84 (GD2), Zooman_80 (GD2),

Start 9:

- Found in 5 of 41 (12.2%) of genes in pham
- Manual Annotations of this start: 4 of 26
- Called 100.0% of time when present
- Phage (with cluster) where this start called: A3Wally_95 (GD1), Cece_78 (GD3), Dodo_97 (GD1), Erasmago_86 (GD2), PauloDiaboli_95 (GD1),

Start 13:

- Found in 5 of 41 (12.2%) of genes in pham
- Manual Annotations of this start: 2 of 26
- Called 40.0% of time when present
- Phage (with cluster) where this start called: Forza_97 (DS), Mareelih_95 (DS),

Summary by clusters:

There are 8 clusters represented in this pham: GD1, GD2, GD3, GD4, DK, FC, UNK, DS,

Info for manual annotations of cluster DK:

- Start number 6 was manually annotated 2 times for cluster DK.

Info for manual annotations of cluster DS:

- Start number 2 was manually annotated 1 time for cluster DS.
- Start number 5 was manually annotated 2 times for cluster DS.
- Start number 13 was manually annotated 2 times for cluster DS.

Info for manual annotations of cluster FC:

- Start number 3 was manually annotated 1 time for cluster FC.
- Start number 4 was manually annotated 11 times for cluster FC.

Info for manual annotations of cluster GD1:

- Start number 9 was manually annotated 3 times for cluster GD1.

Info for manual annotations of cluster GD2:

- Start number 8 was manually annotated 2 times for cluster GD2.

Info for manual annotations of cluster GD3:

- Start number 9 was manually annotated 1 time for cluster GD3.

Info for manual annotations of cluster GD4:

- Start number 7 was manually annotated 1 time for cluster GD4.

Gene Information:

Gene: A3Wally_95 Start: 51157, Stop: 51489, Start Num: 9

Candidate Starts for A3Wally_95:

(1, 51109), (Start: 9 @51157 has 4 MA's), (19, 51271), (20, 51280), (23, 51322), (32, 51382), (34, 51412),

Gene: Artu_81 Start: 49796, Stop: 50140, Start Num: 4

Candidate Starts for Artu_81:

(Start: 4 @49796 has 11 MA's), (27, 50006), (38, 50102),

Gene: Atuin_83 Start: 52443, Stop: 52784, Start Num: 4

Candidate Starts for Atuin_83:

(Start: 4 @52443 has 11 MA's), (27, 52650), (38, 52746),

Gene: Big4_84 Start: 50177, Stop: 50509, Start Num: 8

Candidate Starts for Big4_84:

(Start: 8 @50177 has 2 MA's), (19, 50291),

Gene: Bloom_92 Start: 53844, Stop: 54185, Start Num: 4

Candidate Starts for Bloom_92:

(Start: 4 @53844 has 11 MA's), (27, 54051),

Gene: BlueNGold_96 Start: 52383, Stop: 52823, Start Num: 5

Candidate Starts for BlueNGold_96:

(Start: 2 @52365 has 1 MA's), (Start: 5 @52383 has 2 MA's), (12, 52443), (Start: 13 @52449 has 2 MA's), (15, 52488), (18, 52503), (21, 52524), (24, 52560), (31, 52611), (40, 52776), (41, 52779),

Gene: BooTeria_85 Start: 49864, Stop: 50208, Start Num: 4

Candidate Starts for BooTeria_85:

(Start: 4 @49864 has 11 MA's), (24, 50050), (27, 50074), (38, 50170),

Gene: Boopy_97 Start: 52377, Stop: 52835, Start Num: 2

Candidate Starts for Boopy_97:

(Start: 2 @52377 has 1 MA's), (Start: 5 @52395 has 2 MA's), (12, 52455), (Start: 13 @52461 has 2 MA's), (15, 52500), (18, 52515), (21, 52536), (24, 52572), (31, 52623), (40, 52788), (41, 52791),

Gene: Cece_78 Start: 46135, Stop: 46464, Start Num: 9

Candidate Starts for Cece_78:

(Start: 9 @46135 has 4 MA's), (19, 46246), (26, 46321), (36, 46408),

Gene: Chilliams_85 Start: 55710, Stop: 56066, Start Num: 3

Candidate Starts for Chilliams_85:

(Start: 3 @55710 has 1 MA's), (11, 55779), (19, 55851), (38, 56022),

Gene: Dodo_97 Start: 51479, Stop: 51811, Start Num: 9

Candidate Starts for Dodo_97:

(1, 51431), (Start: 9 @51479 has 4 MA's), (19, 51593), (20, 51602), (23, 51644), (32, 51704), (34, 51734),

Gene: DunneganBoMo_78 Start: 49289, Stop: 49633, Start Num: 4

Candidate Starts for DunneganBoMo_78:

(Start: 4 @49289 has 11 MA's), (27, 49499), (38, 49595),

Gene: Ellewin_77 Start: 48884, Stop: 49228, Start Num: 4

Candidate Starts for Ellewin_77:

(Start: 4 @48884 has 11 MA's), (27, 49094), (38, 49190),

Gene: Emmetator_81 Start: 50036, Stop: 50380, Start Num: 4

Candidate Starts for Emmetator_81:

(Start: 4 @50036 has 11 MA's), (27, 50246), (38, 50342),

Gene: Erasmago_86 Start: 47780, Stop: 48112, Start Num: 9

Candidate Starts for Erasmago_86:

(Start: 9 @47780 has 4 MA's), (14, 47867), (19, 47894), (23, 47945),

Gene: FloraSnap32_88 Start: 52881, Stop: 53222, Start Num: 4

Candidate Starts for FloraSnap32_88:

(Start: 4 @52881 has 11 MA's), (27, 53088),

Gene: Forza_97 Start: 52377, Stop: 52751, Start Num: 13

Candidate Starts for Forza_97:

(Start: 2 @52293 has 1 MA's), (Start: 5 @52311 has 2 MA's), (12, 52371), (Start: 13 @52377 has 2 MA's), (15, 52416), (18, 52431), (21, 52452), (24, 52488), (31, 52539), (40, 52704), (41, 52707),

Gene: FrostedClock_90 Start: 53332, Stop: 53673, Start Num: 4

Candidate Starts for FrostedClock_90:

(Start: 4 @53332 has 11 MA's), (27, 53539),

Gene: GMA2_26 Start: 22675, Stop: 23118, Start Num: 5

Candidate Starts for GMA2_26:

(Start: 5 @22675 has 2 MA's), (10, 22714), (16, 22792), (21, 22819), (24, 22855), (25, 22873), (31, 22906), (33, 22918), (36, 22963),

Gene: GodonK_85 Start: 44030, Stop: 44485, Start Num: 6

Candidate Starts for GodonK_85:

(Start: 6 @44030 has 2 MA's), (15, 44126), (21, 44162), (24, 44198), (28, 44225), (29, 44228), (31, 44249), (37, 44315), (39, 44378),

Gene: GoldenEssence_74 Start: 47637, Stop: 47978, Start Num: 4

Candidate Starts for GoldenEssence_74:

(Start: 4 @47637 has 11 MA's), (27, 47844),

Gene: KSunshine22_83 Start: 50523, Stop: 50867, Start Num: 4

Candidate Starts for KSunshine22_83:

(Start: 4 @50523 has 11 MA's), (27, 50733), (38, 50829),

Gene: Laure_90 Start: 53420, Stop: 53749, Start Num: 4

Candidate Starts for Laure_90:

(Start: 4 @53420 has 11 MA's), (17, 53537), (27, 53621), (35, 53690), (37, 53714),

Gene: LeoJr_88 Start: 52571, Stop: 52912, Start Num: 4

Candidate Starts for LeoJr_88:

(Start: 4 @52571 has 11 MA's), (27, 52778), (38, 52874),

Gene: Mareelih_95 Start: 51879, Stop: 52253, Start Num: 13

Candidate Starts for Mareelih_95:

(Start: 2 @51795 has 1 MA's), (Start: 5 @51813 has 2 MA's), (12, 51873), (Start: 13 @51879 has 2 MA's), (15, 51918), (18, 51933), (21, 51954), (24, 51990), (31, 52041), (40, 52206), (41, 52209),

Gene: Mimi_88 Start: 53191, Stop: 53532, Start Num: 4

Candidate Starts for Mimi_88:

(Start: 4 @53191 has 11 MA's), (27, 53398),

Gene: Panchaali_81 Start: 50285, Stop: 50629, Start Num: 4

Candidate Starts for Panchaali_81:

(Start: 4 @50285 has 11 MA's), (15, 50399), (27, 50495), (38, 50591),

Gene: Patbob_87 Start: 54063, Stop: 54404, Start Num: 4

Candidate Starts for Patbob_87:

(Start: 4 @54063 has 11 MA's), (27, 54270),

Gene: PauloDiaboli_95 Start: 50514, Stop: 50846, Start Num: 9

Candidate Starts for PauloDiaboli_95:

(1, 50466), (Start: 9 @50514 has 4 MA's), (19, 50628), (20, 50637), (23, 50679), (32, 50739), (34, 50769),

Gene: Phendrix_83 Start: 43898, Stop: 44353, Start Num: 6

Candidate Starts for Phendrix_83:

(Start: 6 @43898 has 2 MA's), (15, 43994), (21, 44030), (24, 44066), (28, 44093), (29, 44096), (31, 44117), (37, 44183), (39, 44246),

Gene: Phrampa_80 Start: 50791, Stop: 51135, Start Num: 4

Candidate Starts for Phrampa_80:

(Start: 4 @50791 has 11 MA's), (27, 51001),

Gene: Pumpernickel_92 Start: 51885, Stop: 52220, Start Num: 7

Candidate Starts for Pumpernickel_92:

(Start: 7 @51885 has 1 MA's), (19, 52002), (23, 52053), (30, 52098),

Gene: Racecar_89 Start: 53844, Stop: 54185, Start Num: 4

Candidate Starts for Racecar_89:

(Start: 4 @53844 has 11 MA's), (27, 54051),

Gene: ReginaGlobina_88 Start: 53324, Stop: 53665, Start Num: 4

Candidate Starts for ReginaGlobina_88:

(Start: 4 @53324 has 11 MA's), (27, 53531), (38, 53627),

Gene: Rockabye_90 Start: 56063, Stop: 56419, Start Num: 3

Candidate Starts for Rockabye_90:

(Start: 3 @56063 has 1 MA's), (19, 56204), (38, 56375),

Gene: SJReid_91 Start: 55142, Stop: 55498, Start Num: 3

Candidate Starts for SJReid_91:

(Start: 3 @55142 has 1 MA's), (19, 55283), (22, 55328), (38, 55454),

Gene: Sixama_95 Start: 51920, Stop: 52360, Start Num: 5

Candidate Starts for Sixama_95:

(Start: 5 @51920 has 2 MA's), (12, 51980), (Start: 13 @51986 has 2 MA's), (15, 52025), (18, 52040), (21, 52061), (24, 52097), (31, 52148), (41, 52316), (42, 52334),

Gene: Stewart25555_79 Start: 49707, Stop: 50051, Start Num: 4

Candidate Starts for Stewart25555_79:

(Start: 4 @49707 has 11 MA's), (27, 49917), (38, 50013),

Gene: Talia1610_88 Start: 53209, Stop: 53550, Start Num: 4

Candidate Starts for Talia1610_88:

(Start: 4 @53209 has 11 MA's), (27, 53416),

Gene: WaddleDee_76 Start: 49144, Stop: 49488, Start Num: 4

Candidate Starts for WaddleDee_76:

(Start: 4 @49144 has 11 MA's), (27, 49354), (38, 49450),

Gene: Zooman_80 Start: 48831, Stop: 49163, Start Num: 8

Candidate Starts for Zooman_80:

(Start: 8 @48831 has 2 MA's), (19, 48945), (20, 48954),