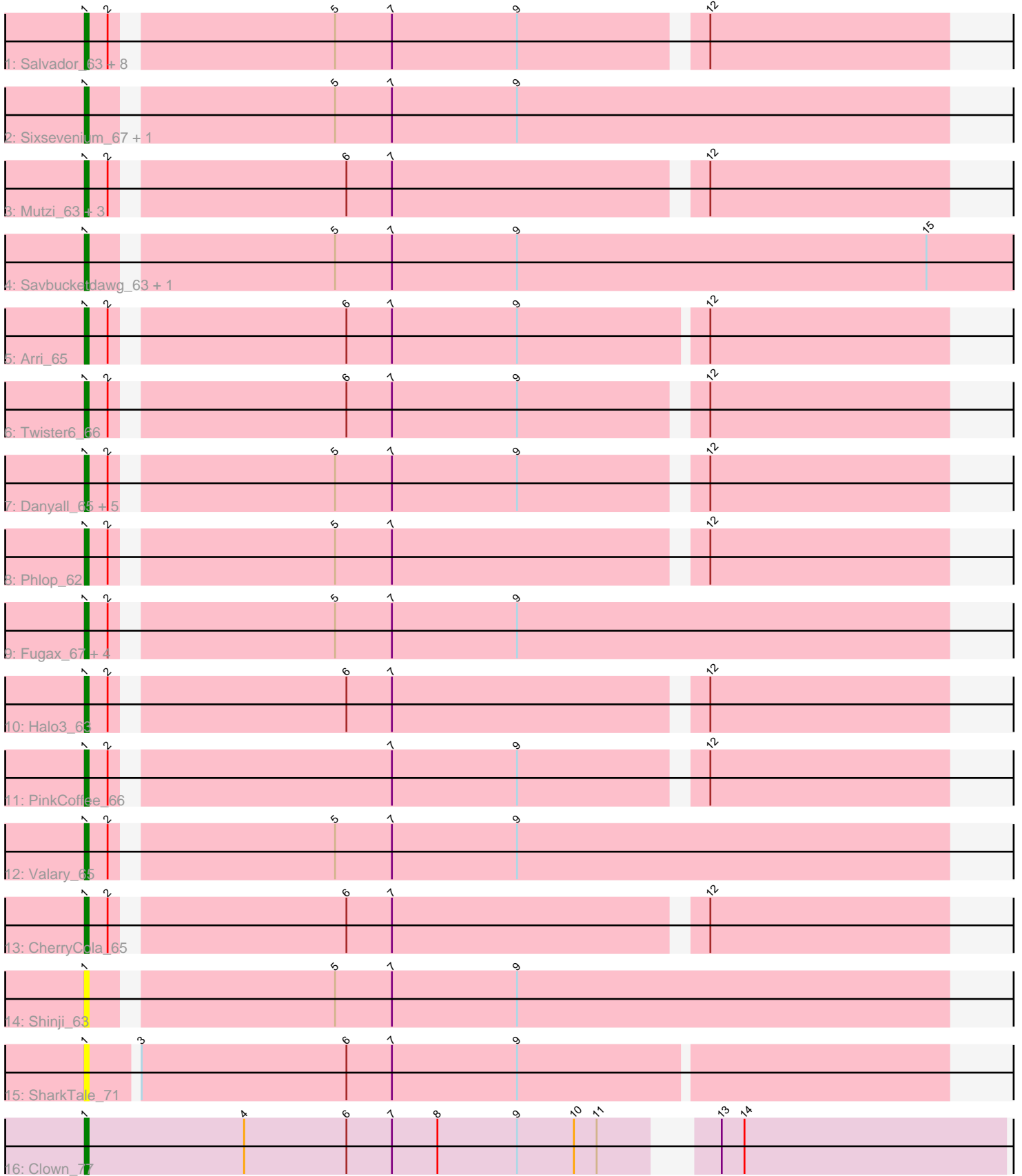


Zoomed Pham 303509



Note: Tracks are now grouped by subcluster and scaled. Switching in subcluster is indicated by changes in track color. Track scale is now set by default to display the region 30 bp upstream of start 1 to 30 bp downstream of the last possible start. If this default region is judged to be packed too tightly with annotated starts, the track will be further scaled to only show that region of the ORF with annotated starts. This action will be indicated by adding "Zoomed" to the title. For starts, yellow indicates the location of called starts comprised solely of Glimmer/GeneMark auto-annotations, green indicates the location of called starts with at least 1 manual gene annotation.

Pham 303509 Report

This analysis was run 06/08/26 on database version 649.

Pham number 303509 has 38 members, 5 are drafts.

Phages represented in each track:

- Track 1 : Salvador_63, RogerDodger_67, PullumCavea_63, Togo_63, Evamon_63, JohnPork_67, Sendy_65, SmokingBunny_64, Portcullis_66
- Track 2 : Sixsevenium_67, Bakery_69
- Track 3 : Mutzi_63, Fireball_67, TillyBobJoe_64, YungMoney_64
- Track 4 : Savbucketdawg_63, Jambalaya_63
- Track 5 : Arri_65
- Track 6 : Twister6_66
- Track 7 : Danyall_65, Wizard_62, CoveyB_65, VanDeWege_66, Nubi_64, Gezellig_62
- Track 8 : Phlop_62
- Track 9 : Fugax_67, Barb_66, Egi03_64, ClamChowder_66, KimmyK_65
- Track 10 : Halo3_63
- Track 11 : PinkCoffee_66
- Track 12 : Valary_65
- Track 13 : CherryCola_65
- Track 14 : Shinji_63
- Track 15 : SharkTale_71
- Track 16 : Clown_77

Summary of Final Annotations (See graph section above for start numbers):

The start number called the most often in the published annotations is 1, it was called in 33 of the 33 non-draft genes in the pham.

Genes that call this "Most Annotated" start:

- Arri_65, Bakery_69, Barb_66, CherryCola_65, ClamChowder_66, Clown_77, CoveyB_65, Danyall_65, Egi03_64, Evamon_63, Fireball_67, Fugax_67, Gezellig_62, Halo3_63, Jambalaya_63, JohnPork_67, KimmyK_65, Mutzi_63, Nubi_64, Phlop_62, PinkCoffee_66, Portcullis_66, PullumCavea_63, RogerDodger_67, Salvador_63, Savbucketdawg_63, Sendy_65, SharkTale_71, Shinji_63, Sixsevenium_67, SmokingBunny_64, TillyBobJoe_64, Togo_63, Twister6_66, Valary_65, VanDeWege_66, Wizard_62, YungMoney_64,

Genes that have the "Most Annotated" start but do not call it:

-

Genes that do not have the "Most Annotated" start:

-

Summary by start number:

Start 1:

- Found in 38 of 38 (100.0%) of genes in pham
- Manual Annotations of this start: 33 of 33
- Called 100.0% of time when present
- Phage (with cluster) where this start called: Arri_65 (DC1), Bakery_69 (DC1), Barb_66 (DC1), CherryCola_65 (DC1), ClamChowder_66 (DC1), Clown_77 (DC2), CoveyB_65 (DC1), Danyall_65 (DC1), Egi03_64 (DC1), Evamon_63 (DC1), Fireball_67 (DC1), Fugax_67 (DC1), Gezellig_62 (DC1), Halo3_63 (DC1), Jambalaya_63 (DC1), JohnPork_67 (DC1), KimmyK_65 (DC1), Mutzi_63 (DC1), Nubi_64 (DC1), Phlop_62 (DC1), PinkCoffee_66 (DC1), Portcullis_66 (DC1), PullumCavea_63 (DC1), RogerDodger_67 (DC1), Salvador_63 (DC1), Savbucketdawg_63 (DC1), Sendy_65 (DC1), SharkTale_71 (DC1), Shinji_63 (DC1), Sixsevenium_67 (DC1), SmokingBunny_64 (DC1), TillyBobJoe_64 (DC1), Togo_63 (DC1), Twister6_66 (DC1), Valary_65 (DC1), VanDeWege_66 (DC1), Wizard_62 (DC1), YungMoney_64 (DC1),

Summary by clusters:

There are 2 clusters represented in this pham: DC2, DC1,

Info for manual annotations of cluster DC1:

- Start number 1 was manually annotated 32 times for cluster DC1.

Info for manual annotations of cluster DC2:

- Start number 1 was manually annotated 1 time for cluster DC2.

Gene Information:

Gene: Arri_65 Start: 47814, Stop: 48242, Start Num: 1

Candidate Starts for Arri_65:

(Start: 1 @47814 has 33 MA's), (2, 47820), (6, 47877), (7, 47889), (9, 47922), (12, 47970), (22, 48168), (23, 48177),

Gene: Bakery_69 Start: 50094, Stop: 50522, Start Num: 1

Candidate Starts for Bakery_69:

(Start: 1 @50094 has 33 MA's), (5, 50154), (7, 50169), (9, 50202), (20, 50418), (22, 50451), (23, 50460),

Gene: Barb_66 Start: 47691, Stop: 48119, Start Num: 1

Candidate Starts for Barb_66:

(Start: 1 @47691 has 33 MA's), (2, 47697), (5, 47751), (7, 47766), (9, 47799), (20, 48015), (22, 48048), (23, 48057),

Gene: CherryCola_65 Start: 48435, Stop: 48860, Start Num: 1

Candidate Starts for CherryCola_65:

(Start: 1 @48435 has 33 MA's), (2, 48441), (6, 48498), (7, 48510), (12, 48588), (22, 48786), (23, 48795),

Gene: ClamChowder_66 Start: 47691, Stop: 48119, Start Num: 1

Candidate Starts for ClamChowder_66:

(Start: 1 @47691 has 33 MA's), (2, 47697), (5, 47751), (7, 47766), (9, 47799), (20, 48015), (22, 48048), (23, 48057),

Gene: Clown_77 Start: 51931, Stop: 52368, Start Num: 1

Candidate Starts for Clown_77:

(Start: 1 @51931 has 33 MA's), (4, 51973), (6, 52000), (7, 52012), (8, 52024), (9, 52045), (10, 52060), (11, 52066), (13, 52087), (14, 52093), (16, 52174), (17, 52177), (20, 52270), (21, 52279), (22, 52303), (23, 52312), (24, 52342),

Gene: CoveyB_65 Start: 47528, Stop: 47950, Start Num: 1

Candidate Starts for CoveyB_65:

(Start: 1 @47528 has 33 MA's), (2, 47534), (5, 47588), (7, 47603), (9, 47636), (12, 47681), (22, 47879), (23, 47888),

Gene: Danyall_65 Start: 47785, Stop: 48210, Start Num: 1

Candidate Starts for Danyall_65:

(Start: 1 @47785 has 33 MA's), (2, 47791), (5, 47845), (7, 47860), (9, 47893), (12, 47938), (22, 48136), (23, 48145),

Gene: Egi03_64 Start: 47551, Stop: 47979, Start Num: 1

Candidate Starts for Egi03_64:

(Start: 1 @47551 has 33 MA's), (2, 47557), (5, 47611), (7, 47626), (9, 47659), (20, 47875), (22, 47908), (23, 47917),

Gene: Evamon_63 Start: 47229, Stop: 47651, Start Num: 1

Candidate Starts for Evamon_63:

(Start: 1 @47229 has 33 MA's), (2, 47235), (5, 47289), (7, 47304), (9, 47337), (12, 47382), (20, 47547), (22, 47580), (23, 47589),

Gene: Fireball_67 Start: 48087, Stop: 48512, Start Num: 1

Candidate Starts for Fireball_67:

(Start: 1 @48087 has 33 MA's), (2, 48093), (6, 48150), (7, 48162), (12, 48240), (20, 48405), (22, 48438), (23, 48447),

Gene: Fugax_67 Start: 47683, Stop: 48111, Start Num: 1

Candidate Starts for Fugax_67:

(Start: 1 @47683 has 33 MA's), (2, 47689), (5, 47743), (7, 47758), (9, 47791), (20, 48007), (22, 48040), (23, 48049),

Gene: Gezellig_62 Start: 47681, Stop: 48106, Start Num: 1

Candidate Starts for Gezellig_62:

(Start: 1 @47681 has 33 MA's), (2, 47687), (5, 47741), (7, 47756), (9, 47789), (12, 47834), (22, 48032), (23, 48041),

Gene: Halo3_63 Start: 48266, Stop: 48691, Start Num: 1

Candidate Starts for Halo3_63:

(Start: 1 @48266 has 33 MA's), (2, 48272), (6, 48329), (7, 48341), (12, 48419), (18, 48524), (20, 48584), (22, 48617), (23, 48626),

Gene: Jambalaya_63 Start: 47534, Stop: 47986, Start Num: 1

Candidate Starts for Jambalaya_63:

(Start: 1 @47534 has 33 MA's), (5, 47594), (7, 47609), (9, 47642), (15, 47750), (22, 47912), (23, 47921),

Gene: JohnPork_67 Start: 47818, Stop: 48243, Start Num: 1

Candidate Starts for JohnPork_67:

(Start: 1 @47818 has 33 MA's), (2, 47824), (5, 47878), (7, 47893), (9, 47926), (12, 47971), (20, 48136), (22, 48169), (23, 48178),

Gene: KimmyK_65 Start: 48125, Stop: 48553, Start Num: 1

Candidate Starts for KimmyK_65:

(Start: 1 @48125 has 33 MA's), (2, 48131), (5, 48185), (7, 48200), (9, 48233), (20, 48449), (22, 48482), (23, 48491),

Gene: Mutzi_63 Start: 48963, Stop: 49388, Start Num: 1

Candidate Starts for Mutzi_63:

(Start: 1 @48963 has 33 MA's), (2, 48969), (6, 49026), (7, 49038), (12, 49116), (20, 49281), (22, 49314), (23, 49323),

Gene: Nubi_64 Start: 47334, Stop: 47762, Start Num: 1

Candidate Starts for Nubi_64:

(Start: 1 @47334 has 33 MA's), (2, 47340), (5, 47394), (7, 47409), (9, 47442), (12, 47493), (22, 47691), (23, 47700),

Gene: Phlop_62 Start: 47691, Stop: 48113, Start Num: 1

Candidate Starts for Phlop_62:

(Start: 1 @47691 has 33 MA's), (2, 47697), (5, 47751), (7, 47766), (12, 47844), (20, 48009), (22, 48042), (23, 48051),

Gene: PinkCoffee_66 Start: 47697, Stop: 48122, Start Num: 1

Candidate Starts for PinkCoffee_66:

(Start: 1 @47697 has 33 MA's), (2, 47703), (7, 47772), (9, 47805), (12, 47850), (20, 48015), (22, 48048), (23, 48057),

Gene: Portcullis_66 Start: 47818, Stop: 48243, Start Num: 1

Candidate Starts for Portcullis_66:

(Start: 1 @47818 has 33 MA's), (2, 47824), (5, 47878), (7, 47893), (9, 47926), (12, 47971), (20, 48136), (22, 48169), (23, 48178),

Gene: PullumCavea_63 Start: 47868, Stop: 48290, Start Num: 1

Candidate Starts for PullumCavea_63:

(Start: 1 @47868 has 33 MA's), (2, 47874), (5, 47928), (7, 47943), (9, 47976), (12, 48021), (20, 48186), (22, 48219), (23, 48228),

Gene: RogerDodger_67 Start: 47990, Stop: 48418, Start Num: 1

Candidate Starts for RogerDodger_67:

(Start: 1 @47990 has 33 MA's), (2, 47996), (5, 48050), (7, 48065), (9, 48098), (12, 48149), (20, 48314), (22, 48347), (23, 48356),

Gene: Salvador_63 Start: 47227, Stop: 47649, Start Num: 1

Candidate Starts for Salvador_63:

(Start: 1 @47227 has 33 MA's), (2, 47233), (5, 47287), (7, 47302), (9, 47335), (12, 47380), (20, 47545), (22, 47578), (23, 47587),

Gene: Savbucketdawg_63 Start: 47534, Stop: 47986, Start Num: 1

Candidate Starts for Savbucketdawg_63:

(Start: 1 @47534 has 33 MA's), (5, 47594), (7, 47609), (9, 47642), (15, 47750), (22, 47912), (23, 47921),

Gene: Sendy_65 Start: 47535, Stop: 47963, Start Num: 1

Candidate Starts for Sendy_65:

(Start: 1 @47535 has 33 MA's), (2, 47541), (5, 47595), (7, 47610), (9, 47643), (12, 47694), (20, 47859), (22, 47892), (23, 47901),

Gene: SharkTale_71 Start: 51048, Stop: 51479, Start Num: 1

Candidate Starts for SharkTale_71:

(Start: 1 @51048 has 33 MA's), (3, 51060), (6, 51114), (7, 51126), (9, 51159), (18, 51312), (22, 51405), (23, 51414),

Gene: Shinji_63 Start: 47397, Stop: 47825, Start Num: 1

Candidate Starts for Shinji_63:

(Start: 1 @47397 has 33 MA's), (5, 47457), (7, 47472), (9, 47505), (19, 47673), (20, 47721), (22, 47754), (23, 47763),

Gene: Sixsevenium_67 Start: 49323, Stop: 49751, Start Num: 1

Candidate Starts for Sixsevenium_67:

(Start: 1 @49323 has 33 MA's), (5, 49383), (7, 49398), (9, 49431), (20, 49647), (22, 49680), (23, 49689),

Gene: SmokingBunny_64 Start: 47828, Stop: 48256, Start Num: 1

Candidate Starts for SmokingBunny_64:

(Start: 1 @47828 has 33 MA's), (2, 47834), (5, 47888), (7, 47903), (9, 47936), (12, 47987), (20, 48152), (22, 48185), (23, 48194),

Gene: TillyBobJoe_64 Start: 47687, Stop: 48112, Start Num: 1

Candidate Starts for TillyBobJoe_64:

(Start: 1 @47687 has 33 MA's), (2, 47693), (6, 47750), (7, 47762), (12, 47840), (20, 48005), (22, 48038), (23, 48047),

Gene: Togo_63 Start: 47828, Stop: 48256, Start Num: 1

Candidate Starts for Togo_63:

(Start: 1 @47828 has 33 MA's), (2, 47834), (5, 47888), (7, 47903), (9, 47936), (12, 47987), (20, 48152), (22, 48185), (23, 48194),

Gene: Twister6_66 Start: 47588, Stop: 48013, Start Num: 1

Candidate Starts for Twister6_66:

(Start: 1 @47588 has 33 MA's), (2, 47594), (6, 47651), (7, 47663), (9, 47696), (12, 47741), (20, 47906), (22, 47939), (23, 47948),

Gene: Valary_65 Start: 48435, Stop: 48863, Start Num: 1

Candidate Starts for Valary_65:

(Start: 1 @48435 has 33 MA's), (2, 48441), (5, 48495), (7, 48510), (9, 48543), (22, 48792), (23, 48801),

Gene: VanDeWege_66 Start: 47775, Stop: 48197, Start Num: 1

Candidate Starts for VanDeWege_66:

(Start: 1 @47775 has 33 MA's), (2, 47781), (5, 47835), (7, 47850), (9, 47883), (12, 47928), (22, 48126), (23, 48135),

Gene: Wizard_62 Start: 47681, Stop: 48106, Start Num: 1

Candidate Starts for Wizard_62:

(Start: 1 @47681 has 33 MA's), (2, 47687), (5, 47741), (7, 47756), (9, 47789), (12, 47834), (22, 48032), (23, 48041),

Gene: YungMoney_64 Start: 49803, Stop: 50228, Start Num: 1

Candidate Starts for YungMoney_64:

(Start: 1 @49803 has 33 MA's), (2, 49809), (6, 49866), (7, 49878), (12, 49956), (20, 50121), (22, 50154), (23, 50163),